



ALTERNATIVE LOCATION ANALYSIS (ALA) SUMMARY  
FOR  
Sumac 1265-13

Prepared For:



1120 Lincoln Street, Suite 801  
Denver, CO 80203  
[www.cogcc.state.co.us](http://www.cogcc.state.co.us)

Prepared By:



600 17<sup>th</sup> Street, Suite 2800  
Denver, CO 80202  
[www.rpgres.com](http://www.rpgres.com)

Date Prepared: June 2022

## ALA Narrative Summary

Clear Creek Resource Partners Operating, Inc. (CCRP) evaluated three (3) alternative locations in addition to the proposed location. All locations would require new permits from both Weld County and COGCC.

All locations are located within Pronghorn Winter Concentration, Mule Deer Winter Concentration, and Mule Deer Severe Winter Range High Priority Habitats. None of the locations are within additional High Priority Habitats or other known sensitive habitats. All locations are within rangeland. Therefore, no sites were deemed more advantageous from an environmental standpoint.

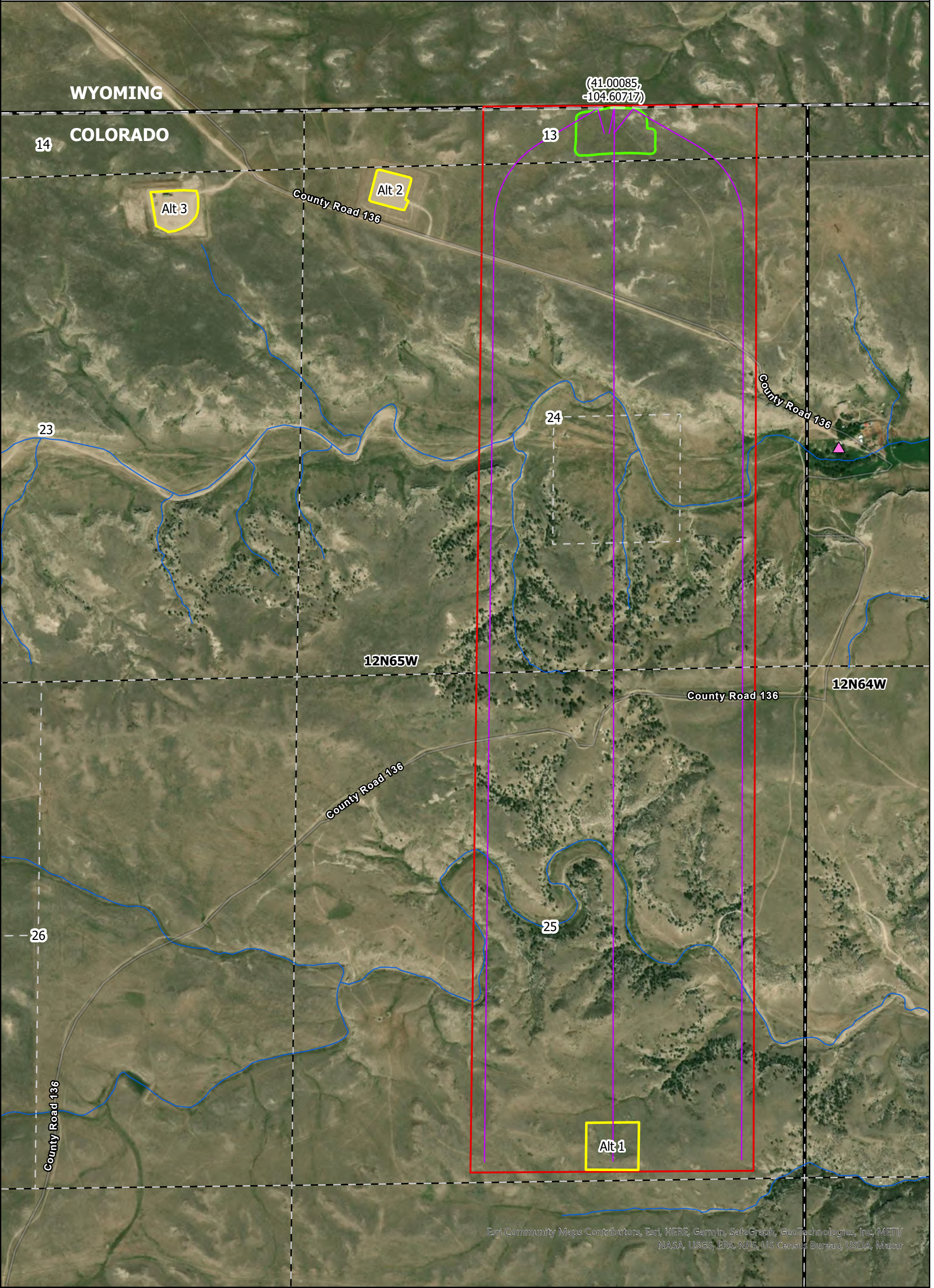
All locations are greater than 2,000 feet from any Disproportionately Impacted Community, Residential Building Unit, High Occupancy Building Unit, School Facility, or Child Care Center. Therefore, no sites were deemed more advantageous from a health, safety, and welfare standpoint.

Table 1 below summarizes the overall evaluation criteria used for determining the proposed Sumac location. The attached maps depict the proposed and alternative locations, as well as surrounding habitats and features. Lastly, the comprehensive ALA Data Table provides a detailed assessment of the proposed and alternative locations.

Ultimately, the proposed location was selected as the preferred location to mitigate downhole complexity and create the safest working conditions on the surface.

**Table 1: Alternative Siting Analysis**

Location ID	Location Type	Tier Classification	Pros	Cons
Sumac 1265-13 (Preferred)	New Location	IV-A	<ol style="list-style-type: none"> <li>Centrally located to minimize downhole well complexity</li> <li>Co-located with similar use developments</li> </ol>	<ol style="list-style-type: none"> <li>New pad disturbance</li> </ol>
Alternative Location 1	New Location - Sec 25	III-A	<ol style="list-style-type: none"> <li>Centrally located to minimize downhole well complexity</li> </ol>	<ol style="list-style-type: none"> <li>New pad disturbance</li> <li>Long access road; poor connectivity to pipeline</li> </ol>
Alternative Location 2	Existing Grynberg Stateline Fed Site	IV-B	<ol style="list-style-type: none"> <li>Existing Pad Location</li> <li>Co-located with similar use developments</li> </ol>	<ol style="list-style-type: none"> <li>Enhanced downhole well complexity</li> <li>Intended to be used for other operations</li> <li>Closest to county road</li> </ol>
Alternative Location 3	Existing True Ranch 23 Fee	IV-B	<ol style="list-style-type: none"> <li>Existing Pad Location</li> <li>Co-located with similar use developments</li> </ol>	<ol style="list-style-type: none"> <li>Extreme downhole well complexity</li> <li>Complex pad expansion needs</li> </ol>



Esri Community Maps Contributors, Esri, HERE, Garmin, SafeGraph, GeoTechnologies, Inc, METI/  
NASA, USGS, EPA, NPS, US Census Bureau, USDA, Maxar

ALTERNATIVE  
LOCATION  
ANALYSIS

MAP 1 of 3

- Proposed Lateral

Development Area (DA)

Proposed Oil & Gas (O&G) Location

Alternative O&G Location
- Address Point

NHD-Mapped Stream/River/Artificial Path

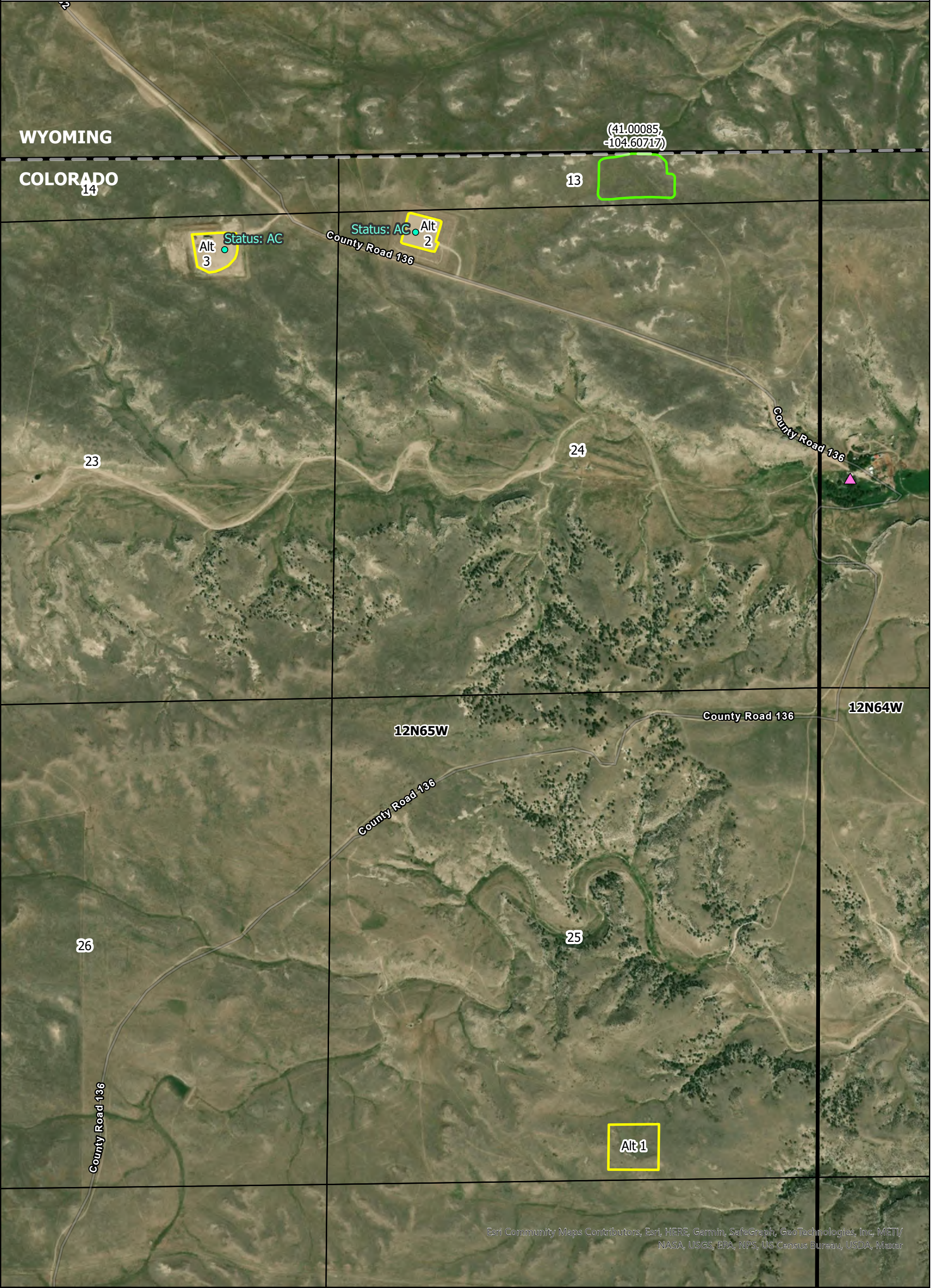
Parcel Boundaries

The proposed location and alternative locations are all located within Pronghorn Winter Concentration, Mule Deer Winter Concentration, and Mule Deer Severe Winter Range High Priority Habitats.

Projection: NAD 83 UTM 13N  
Date: 06/08/2022  
Drafted by: LMH



1 inch equals 917 feet



ALTERNATIVE  
LOCATION  
ANALYSIS

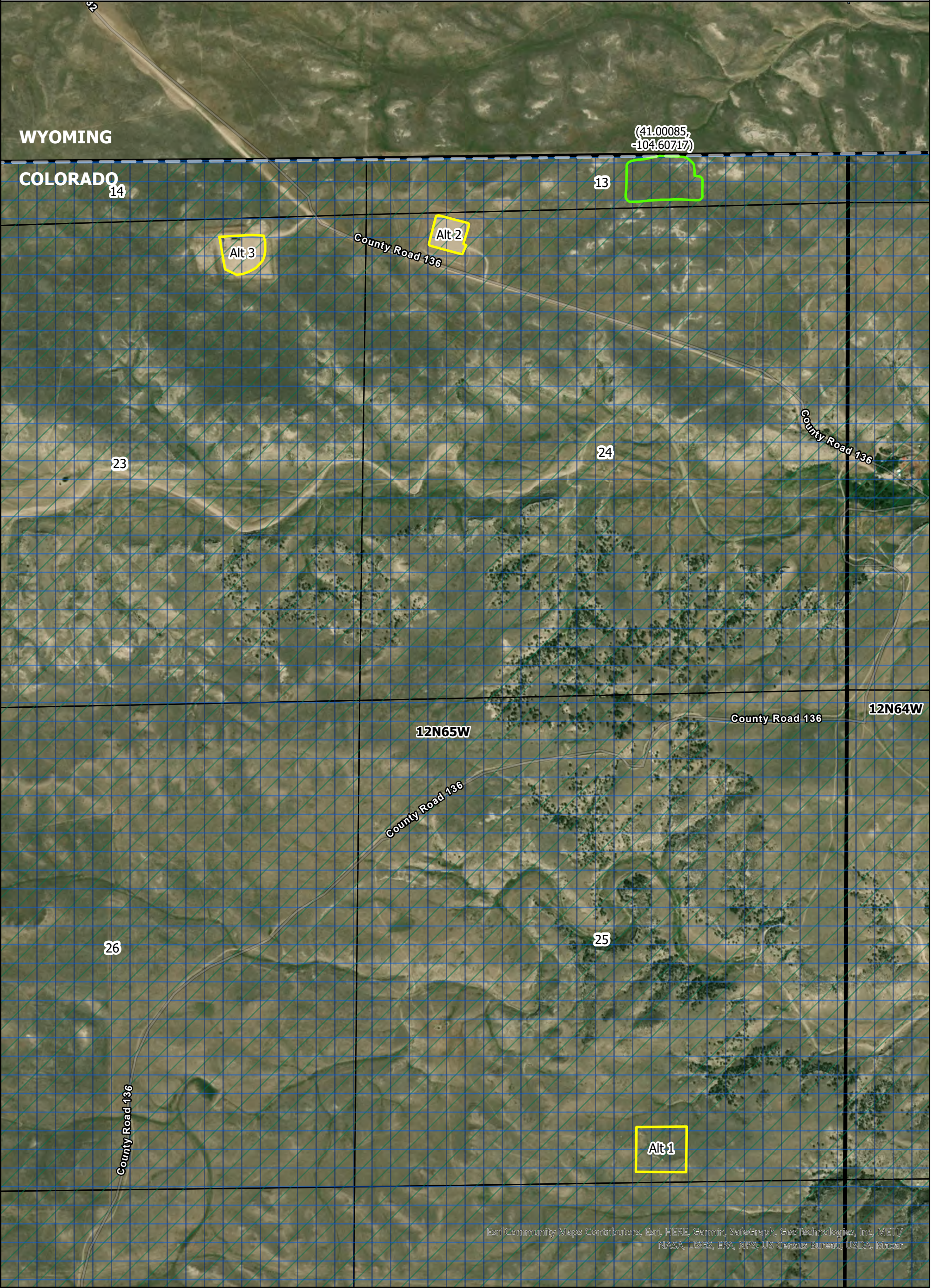
- Proposed Oil & Gas (O&G) Location

Alternative O&G Location

Oil & Gas Location

Address Point
- The proposed location and alternative locations are all located within Pronghorn Winter Concentration, Mule Deer Winter Concentration, and Mule Deer Severe Winter Range High Priority Habitats.

There are no Disproportionately Impacted Communities within 2,000 feet of the proposed or any alternative location.
- Projection: NAD 83 UTM 13N  
Date: 06/08/2022  
Drafted by: LMH
- 
- 1 inch equals 958 feet



ALTERNATIVE  
LOCATION  
ANALYSIS

- Proposed Oil & Gas (O&G) Location
- Alternative O&G Location
- Rule 304.b.(2).B.iv (met by Proposed Location & Alternative Locations 2 and 3)**
- Wyoming-Colorado Border

- Rule 304.b.(2).B.viii (met by Proposed Location & all Alternative Locations)**
- Mule Deer Severe Winter Range HPH (1202.d)
- Mule Deer Winter Concentration Area HPH (1202.d)
- Pronghorn Winter Concentration Area HPH (1202.d)

Projection: NAD 83 UTM 13N  
Date: 06/08/2022  
Drafted by: LMH

N

0

500

1,000

Feet

1 inch equals 958 feet

ALA Data Table												
	Proposed Location			Alt Loc 1			Alt Loc 2			Alt Loc 3		
	Latitude	Longitude		Latitude	Longitude		Latitude	Longitude		Latitude	Longitude	
Reference Point	41.00085	-104.60717		40.97225	-104.60737		40.99921	-104.61546		40.99869	-104.62348	
304.b.(2).C.ii --> 304.b.(3).A												
Distance to nearest Cultural Feature:	Distance	Direction		Distance	Direction		Distance	Direction		Distance	Direction	
Building	3,500 feet	southeast		>1 mile	N/A		5,000 ft	southeast		>1 mile	N/A	
Residential Building Unit	3,500 feet	southeast		>1 mile	N/A		5,000 ft	southeast		>1 mile	N/A	
HOBUs	>1 mile	N/A		>1 mile	N/A		>1 mile	N/A		>1 mile	N/A	
Designated Outside Activity Area	>1 mile	N/A		>1 mile	N/A		>1 mile	N/A		>1 mile	N/A	
Public Road	1,250 feet	southeast		4,100 feet	northwest		185 feet (pad edge)	south		450 feet	northeast	
Above-ground Utility	1700 feet	east		6,500 feet	southwest		4,000 feet	east		6,000 feet	east	
Railroad	>1 mile	N/A		>1 mile	N/A		>1 mile	N/A		>1 mile	N/A	
Property Line	15 feet	north		105 feet	south		27 feet	north		183 feet	north	
School Facility	>1 mile	N/A		>1 mile	N/A		>1 mile	N/A		>1 mile	N/A	
Child Care Center	>1 mile	N/A		>1 mile	N/A		>1 mile	N/A		>1 mile	N/A	
Boundary of DIC	>1 mile	N/A		>1 mile	N/A		>1 mile	N/A		>1 mile	N/A	
RBU, HOBUs, or School Facility within a Disproportionately Impacted Community within 2000 feet	N/A	N/A		N/A	N/A		N/A	N/A		N/A	N/A	
304.b.(2).C.ii --> 304.b.(3).B												
Number of cultural features within:	0-500 feet	501-1,000 feet	1,001-2,000 feet	0-500 feet	501-1,000 feet	1,001-2,000 feet	0-500 feet	501-1,000 feet	1,001-2,000 feet	0-500 feet	501-1,000 feet	1,001-2,000 feet
BUs	0	0	0	0	0	0	0	0	0	0	0	0
RBUs	0	0	0	0	0	0	0	0	0	0	0	0
HOBUs	0	0	0	0	0	0	0	0	0	0	0	0
School Properties	0	0	0	0	0	0	0	0	0	0	0	0
School Facilities	0	0	0	0	0	0	0	0	0	0	0	0
DOAAs	0	0	0	0	0	0	0	0	0	0	0	0
304.b.(2).C.iii.aa												
304.b.(2).B Criteria Met (include as many lines as needed, and provide a brief description of each criteria met)	iv - the proposed Working Pad Surface is within 2,000 feet of the Wyoming-Colorado state boundary.  viii - the proposed O&G Location is within Mule Deer Severe Winter Range, Mule Deer Winter Concentration Area, and Pronghorn Winter Concentration Area High Priority Habitats.			viii - the proposed O&G Location is within Mule Deer Severe Winter Range, Mule Deer Winter Concentration Area, and Pronghorn Winter Concentration Area High Priority Habitats.			iv - the proposed Working Pad Surface is within 2,000 feet of the Wyoming-Colorado state boundary.  viii - the proposed O&G Location is within Mule Deer Severe Winter Range, Mule Deer Winter Concentration Area, and Pronghorn Winter Concentration Area High Priority Habitats.			iv - the proposed Working Pad Surface is within 2,000 feet of the Wyoming-Colorado state boundary.  viii - the proposed O&G Location is within Mule Deer Severe Winter Range, Mule Deer Winter Concentration Area, and Pronghorn Winter Concentration Area High Priority Habitats.		
304.b.(2).C.iii.bb												
Location within DIC or within 2000' of DIC? YES or NO	NO			NO			NO			NO		
	Distance	Direction		Distance	Direction		Distance	Direction		Distance	Direction	
If YES, distance to nearest BU:	N/A	N/A		N/A	N/A		N/A	N/A		N/A	N/A	
If YES, distance to nearest HOBUs:	N/A	N/A		N/A	N/A		N/A	N/A		N/A	N/A	
If YES, distance to nearest School:	N/A	N/A		N/A	N/A		N/A	N/A		N/A	N/A	
If YES, describe community outreach efforts per 304.b.(2).C.iii	N/A			N/A			N/A			N/A		
If YES, the number and description of existing Oil and Gas Locations, Facilities, and Wells within 2000' of any RBU, HOBUs, or School within 2000' of the proposed location	Number	Description		Number	Description		Number	Description		Number	Description	
	N/A	N/A		N/A	N/A		N/A	N/A		N/A	N/A	
304.b.(2).C.iii.cc												
Distance to municipal or county boundaries within 2000', and names of the Proximate Local Government(s)	Distance	Name		Distance	Name		Distance	Name		Distance	Name	
	15 feet	Laramie County, Wyoming		> 1 mile	N/A		625 feet	Laramie County, Wyoming		810 feet	Laramie County, Wyoming	
304.b.(2).C.iii.dd												
Relevant Local Government Name	Weld County			Weld County			Weld County			Weld County		
RLG land use or zoning designation	A AG (Agricultural)			A AG (Agricultural)			A AG (Agricultural)			A AG (Agricultural)		
RLG permitting process	1041 WOGLA			Alternative Site Analysis in 1041 WOGLA			Alternative Site Analysis in 1041 WOGLA			Alternative Site Analysis in 1041 WOGLA		
Status of RLG permit if applicable	Under Review			N/A			N/A			N/A		
304.b.(2).C.iii.ee												
Current Land Use	Rangeland			Rangeland			Oil & Gas			Oil & Gas		
Plans for future use at Location	Oil & Gas			Rangeland			Rangeland			Oil & Gas		
Plans for future use proximal to location	Rangeland			Rangeland			Rangeland			Rangeland		
304.b.(2).C.iii.ff												
Distance to nearest wetland, surface water (Waters of the State), surface water supply area, or PWS supply well (Type III aquifer or GUDI)	Distance	Direction	Type	Distance	Direction	Type	Distance	Direction	Type	Distance	Direction	Type
	950 feet	northeast	NHD/NWI-mapped stream/riverine	400 feet	south	NHD/NWI-mapped stream/riverine	1,400 feet	north	NHD/NWI-mapped stream/riverine	240 feet	southeast	NHD/NWI-mapped stream/riverine
304.b.(2).C.iii.gg												
Distance to nearest HPH	Distance	Direction	Description	Distance	Direction	Type	Distance	Direction	Type	Distance	Direction	Type
	0	N/A	Mule Deer Severe Winter Range, Mule Deer Winter Concentration Area (WCA), Pronghorn WCA	0	N/A	Mule Deer Severe Winter Range, Mule Deer Winter Concentration Area (WCA), Pronghorn WCA	0	N/A	Mule Deer Severe Winter Range, Mule Deer Winter Concentration Area (WCA), Pronghorn WCA	0	N/A	Mule Deer Severe Winter Range, Mule Deer Winter Concentration Area (WCA), Pronghorn WCA
304.b.(2).C.iii.hh												
Anticipated method of RTC	SUA			SUA			SUA			SUA		
Surface Ownership	True Ranches LLC			True Ranches LLC			True Ranches LLC			True Ranches LLC		
Additional Information												
604.a considerations	None (Location is within 150 feet of property line, but wells are >150 feet from property line)			None			Within 200 ft of public road; limited space for wells to remain >150 feet from property line			None		
604.b considerations	None			None			None			None		
Any variance or other relief required	None			None			None			None		
Tier Classification	IV-A			III-A			IV-B			IV-B		
The following items should be answered in a written narrative format and attached to the Form 2A as "ALA Narrative Summary" (PDF format)												
Description of potential impacts to health, safety, welfare, wildlife, and the environment related to the development of this location	See ALA Narrative Summary			See ALA Narrative Summary			See ALA Narrative Summary			See ALA Narrative Summary		
Description of advantages and disadvantages associated with this location	See ALA Narrative Summary			See ALA Narrative Summary			See ALA Narrative Summary			See ALA Narrative Summary		
Permitting considerations for this location	See ALA Narrative Summary			See ALA Narrative Summary			See ALA Narrative Summary			See ALA Narrative Summary		
Conditions or factors that make the location unavailable	See ALA Narrative Summary			See ALA Narrative Summary			See ALA Narrative Summary			See ALA Narrative Summary		
Any other considerations	See ALA Narrative Summary			See ALA Narrative Summary			See ALA Narrative Summary			See ALA Narrative Summary		