



1:240

RWD
Resistivity

MD Log

Country : **USA**
Field : **Wattensburg**
Location : **40.067252**
 : **-104.658320**
Well : **Warner 2C-10H-E165**
Company : **Crestone Peak**
Rig : **345**

Company : **Crestone Peak**
Rig : **345**
Well : **Warner 2C-10H-E165**
Field : **Wattensburg**
County/Parish : **Weld**
State/Province : **Colorado**
Country : **USA**
Well ID : **05-123-50736**

LOCATION

Latitude : **40.067252**
Longitude : **-104.658320**
Hudson, CO
Sect: **10** Twp: **1N** Range: **65W**

Other Services:

Permanent Datum : **MSL** Elevation: **0**
Log Measured From : **RKB**

Elev. KB : **4996**
DF : **25**
GLWD : **4971**

Depth Logged : **2550** to : **6525**
Date Logged : **03-09-2022** to : **03-10-2022**
Total Depth MD : **14661.00** TVD : **7285.8**
Spud Date : **03-08-2022**

FIELD PRINT

Job Number:
WARNER_2C_10H_E165

Borehole Record (MD)				Borehole Record (MD)			
Run	Size	From	To	Run	Size	From	To
1	8.5	0	14661				
</							

CORRECTIONS

Gamma Ray Corrections									
-----------------------	--	--	--	--	--	--	--	--	--

WPR Corrections	
1	
2	
3	
4	
5	
6	
7	
8	
9	
10	
11	
12	
13	
14	
15	
16	
17	
18	
19	
20	
21	
22	
23	
24	
25	
26	
27	
28	
29	
30	
31	
32	
33	
34	
35	
36	
37	
38	
39	
40	
41	
42	
43	
44	
45	
46	
47	
48	
49	
50	
51	
52	
53	
54	
55	
56	
57	
58	
59	
60	
61	
62	
63	
64	
65	
66	
67	
68	
69	
70	
71	
72	
73	
74	
75	
76	
77	
78	
79	
80	
81	
82	
83	
84	
85	
86	
87	
88	
89	
90	
91	
92	
93	
94	
95	
96	
97	
98	
99	
100	

EQUIPMENT	
1	...
2	...
3	...
4	...
5	...
6	...
7	...
8	...
9	...
10	...
11	...
12	...
13	...
14	...
15	...
16	...
17	...
18	...
19	...
20	...
21	...
22	...
23	...
24	...
25	...
26	...
27	...
28	...
29	...
30	...
31	...
32	...
33	...
34	...
35	...
36	...
37	...
38	...
39	...
40	...
41	...
42	...
43	...
44	...
45	...
46	...
47	...
48	...
49	...
50	...
51	...
52	...
53	...
54	...
55	...
56	...
57	...
58	...
59	...
60	...
61	...
62	...
63	...
64	...
65	...
66	...
67	...
68	...
69	...
70	...
71	...
72	...
73	...
74	...
75	...
76	...
77	...
78	...
79	...
80	...
81	...
82	...
83	...
84	...
85	...
86	...
87	...
88	...
89	...
90	...
91	...
92	...
93	...
94	...
95	...
96	...
97	...
98	...
99	...
100	...

Serial Numbers

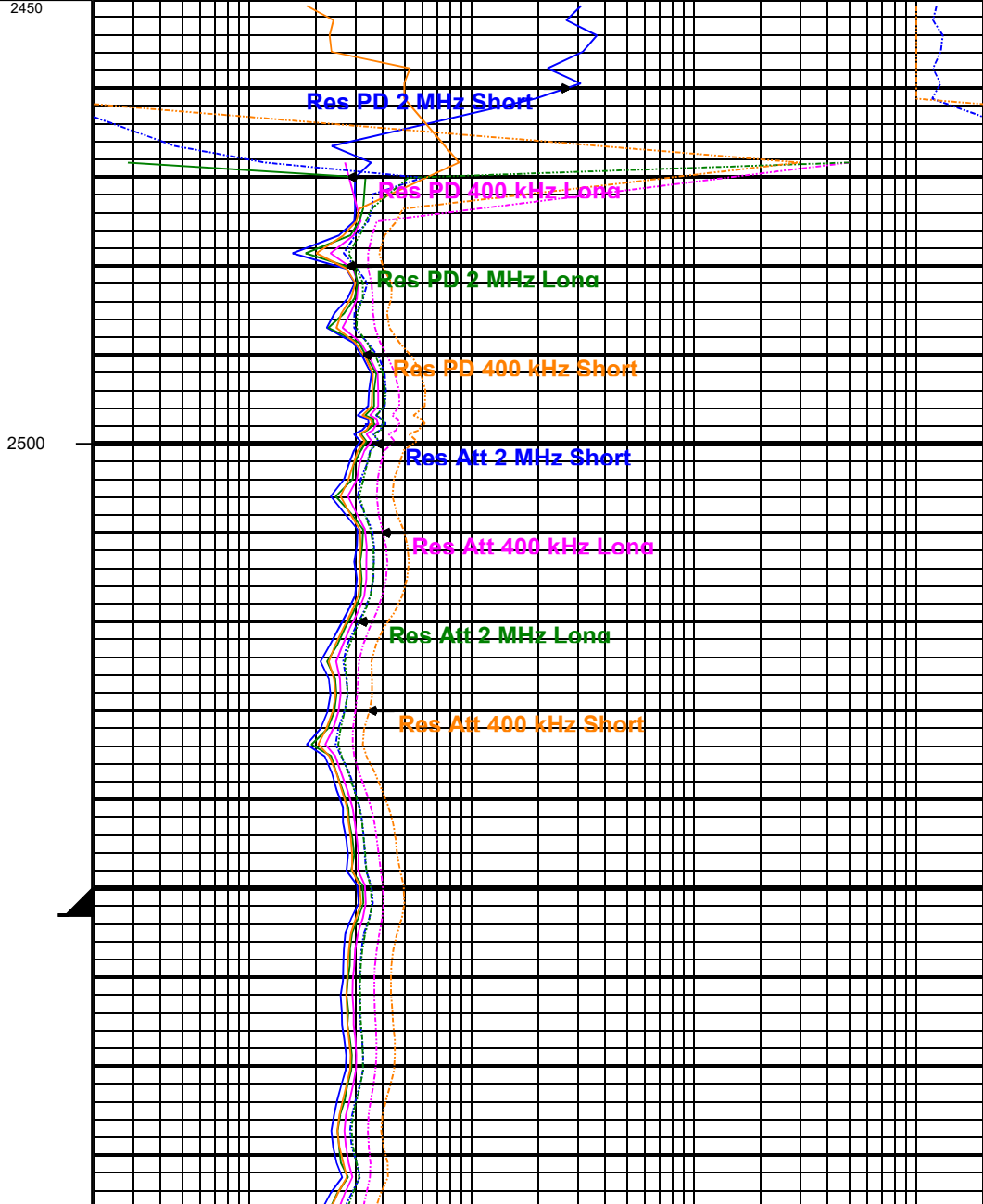
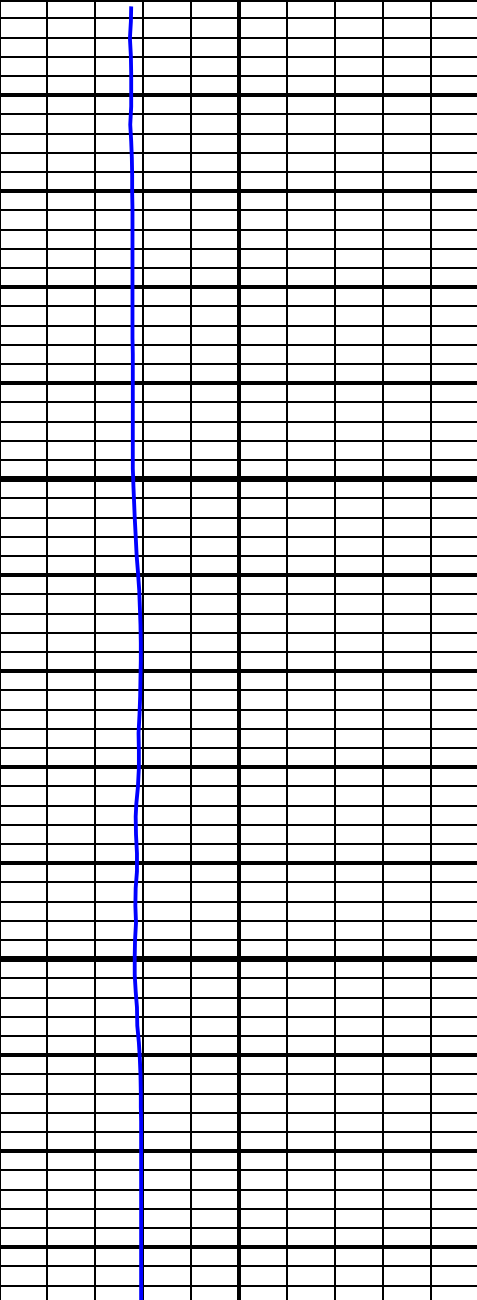
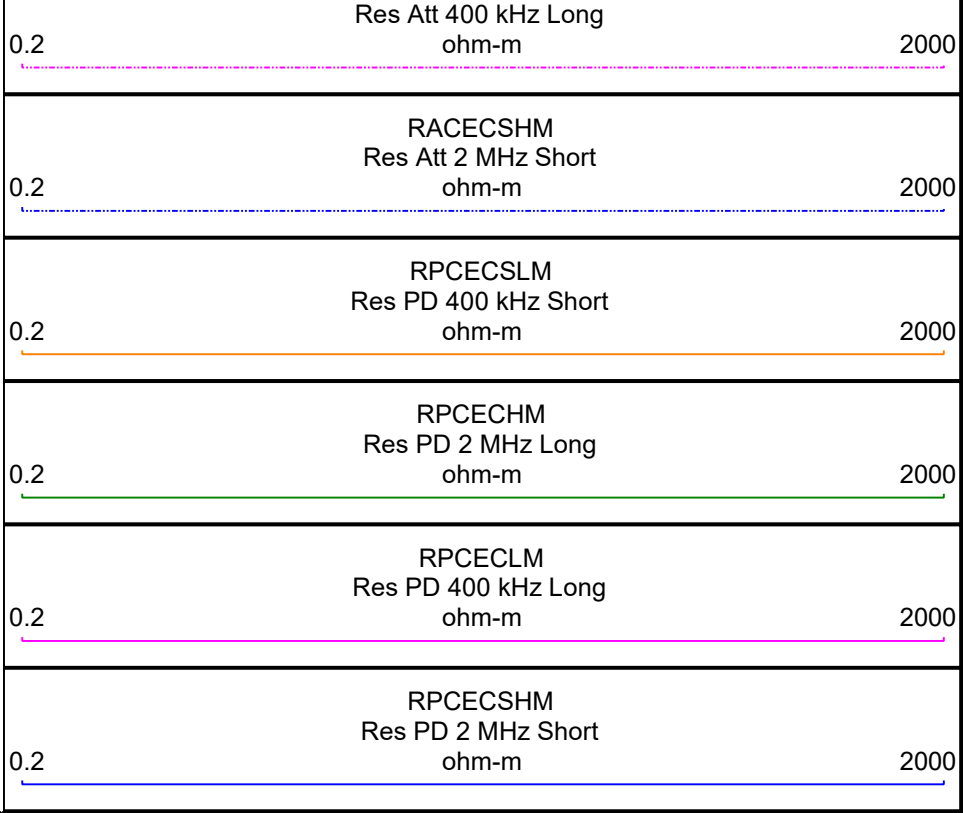
Surface Gear					
Flow Sub					
Pulser					
Battery 1					
Battery 2					
Turbine Alternator					
Directional Sensor					
Gamma Sensor					

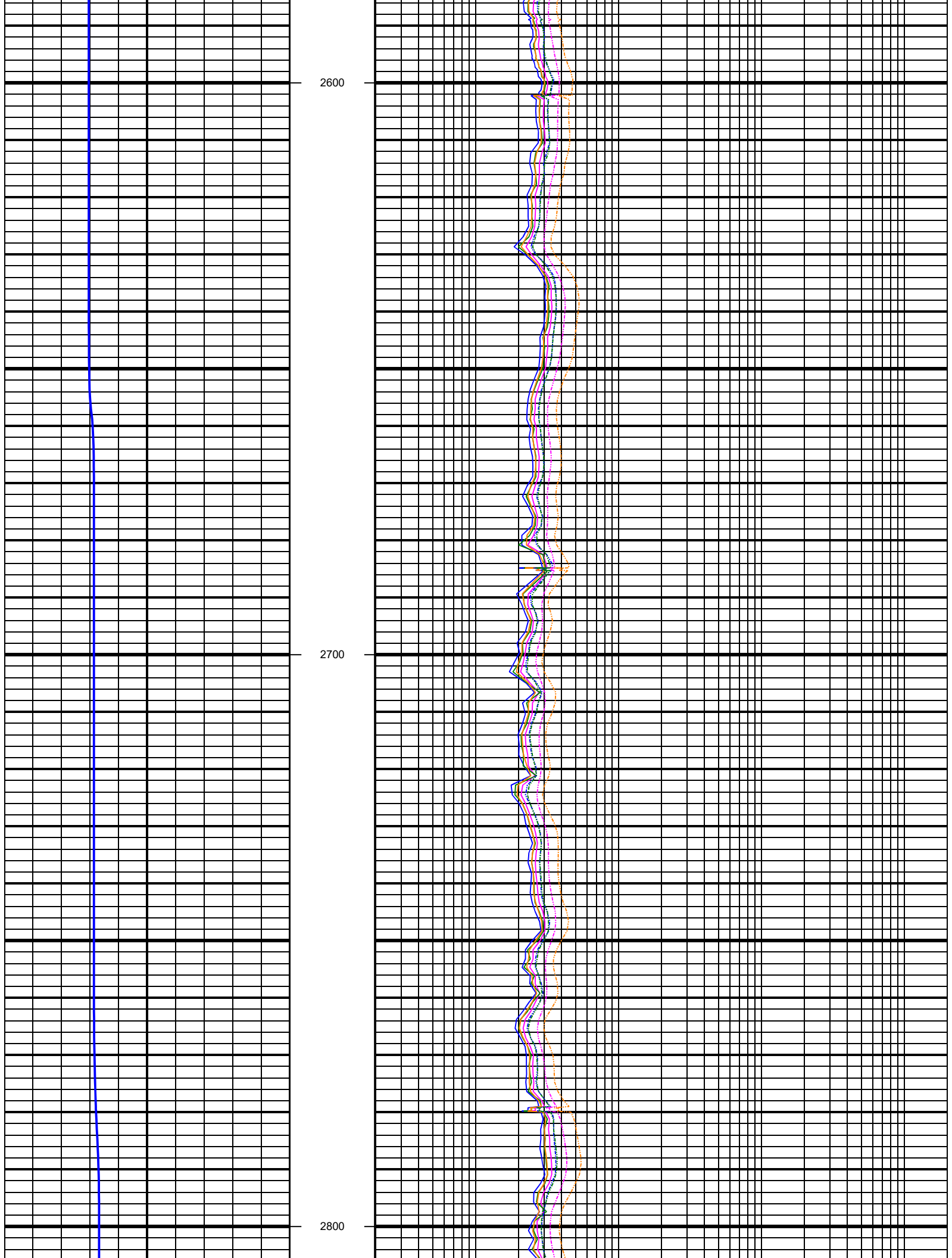
WPR Sensor	568				
Vibration Sensor					
Sensor Offsets To Bit					
Directional (ft)					
Gamma Ray (ft)					
WPR (ft)	8135.3				
PWD (ft)					
Vibration (ft)					
MUD DATA					
Log Run	1				
Bit Run	1				
Start Date/Time	2022-03-07 00:00:02				
Start Depth (ft)	2550				
End Date/Time	2022-03-11 03:02:04				
End Depth (ft)	14661				
Mud Properties					
Mud Depth	8526.00				
Mud Type	OBM				
Density	9.15				
Chlorides	336161.00				
Plastic Viscosity	7.00				
Yield Point	7.00				
Filtrate	25.00				
pH	7.00				
Oil/Water Ratio	80/20				
Sand Content	0.00				
Solids Content	10.60				
Barite Content	0.00				
10 second Gel	3.00				
10 minute Gel	4.00				
LCM Type					
LCM Conc.	0.00				
Funnel Viscosity	44.00				
Max Circ Temp	222F				

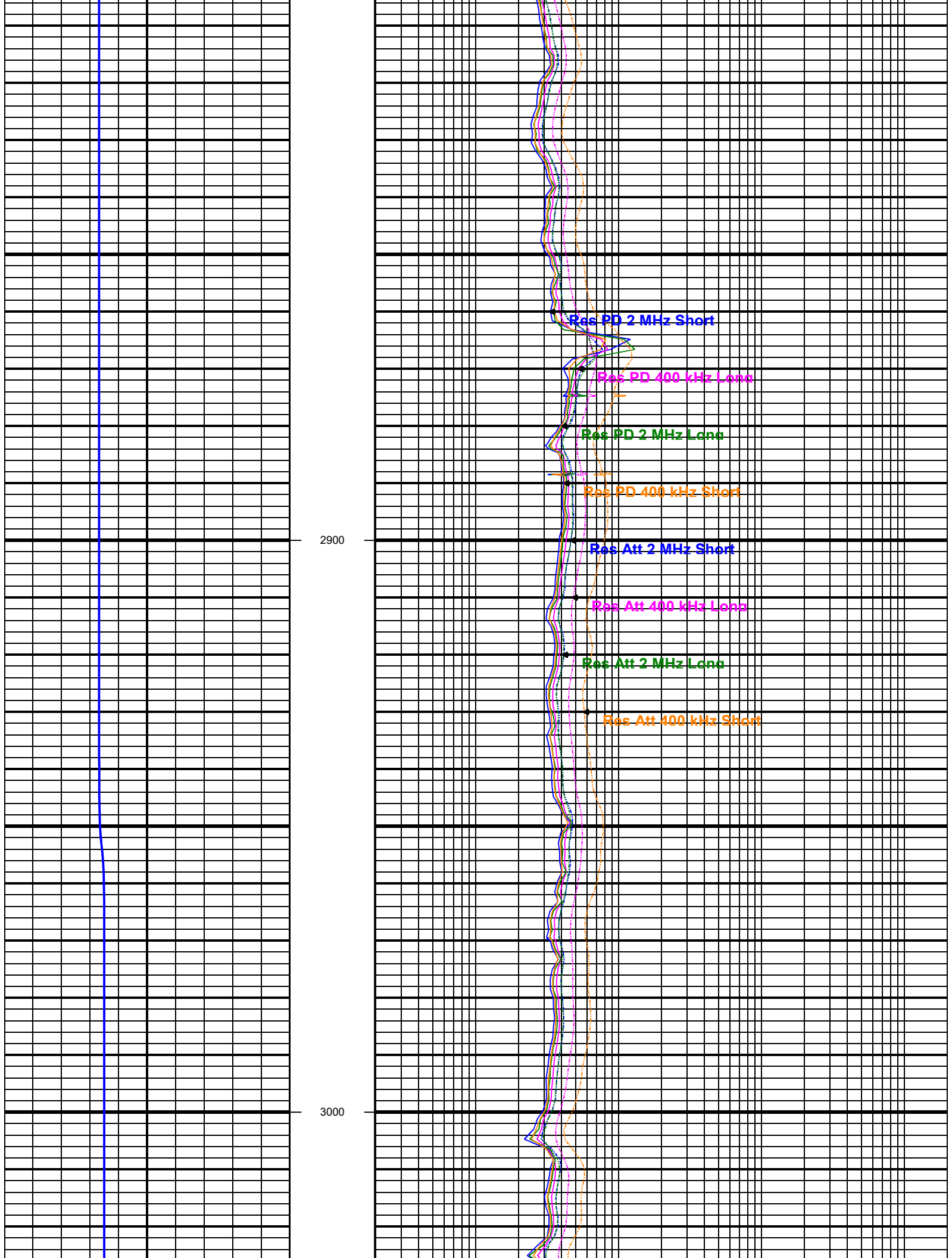
0.2	RACECSLM Res Att 400 kHz Short ohm-m	2000
0.2	RACECHM Res Att 2 MHz Long ohm-m	2000
	RACECLM	

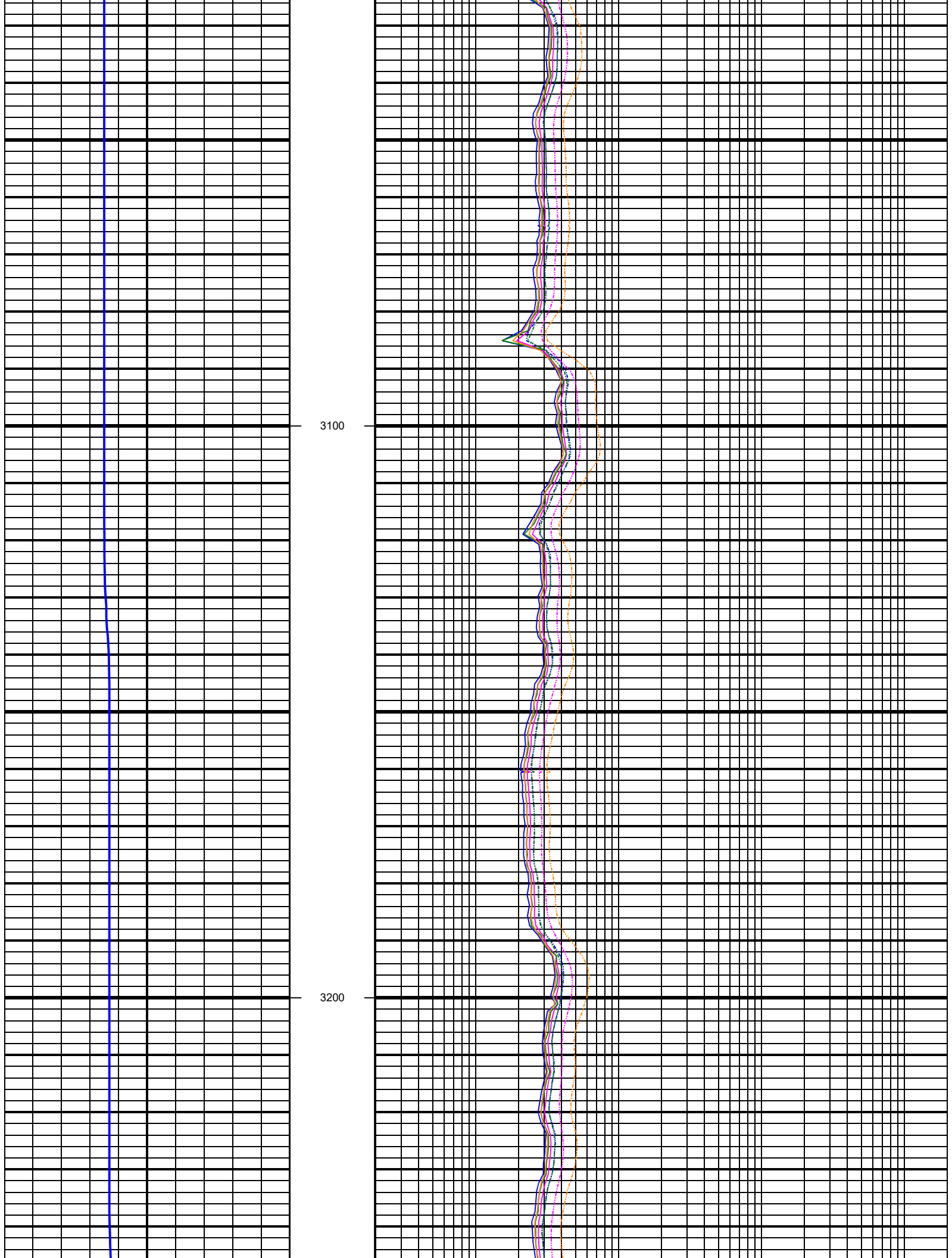
Resistivity Compensation Temperature
TRMRAC
150 F (5.00 ft Smoothing) 250

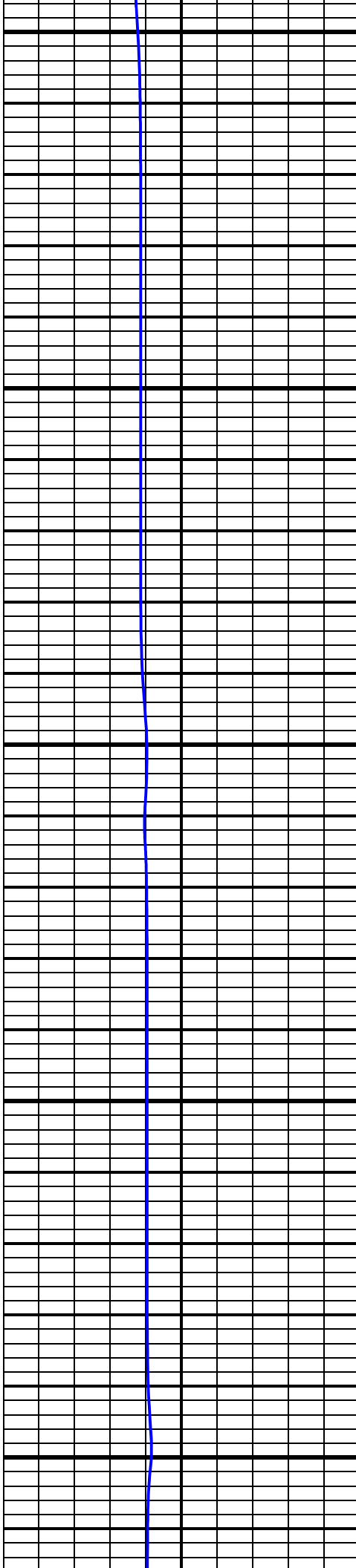
MD
FEET
1:240





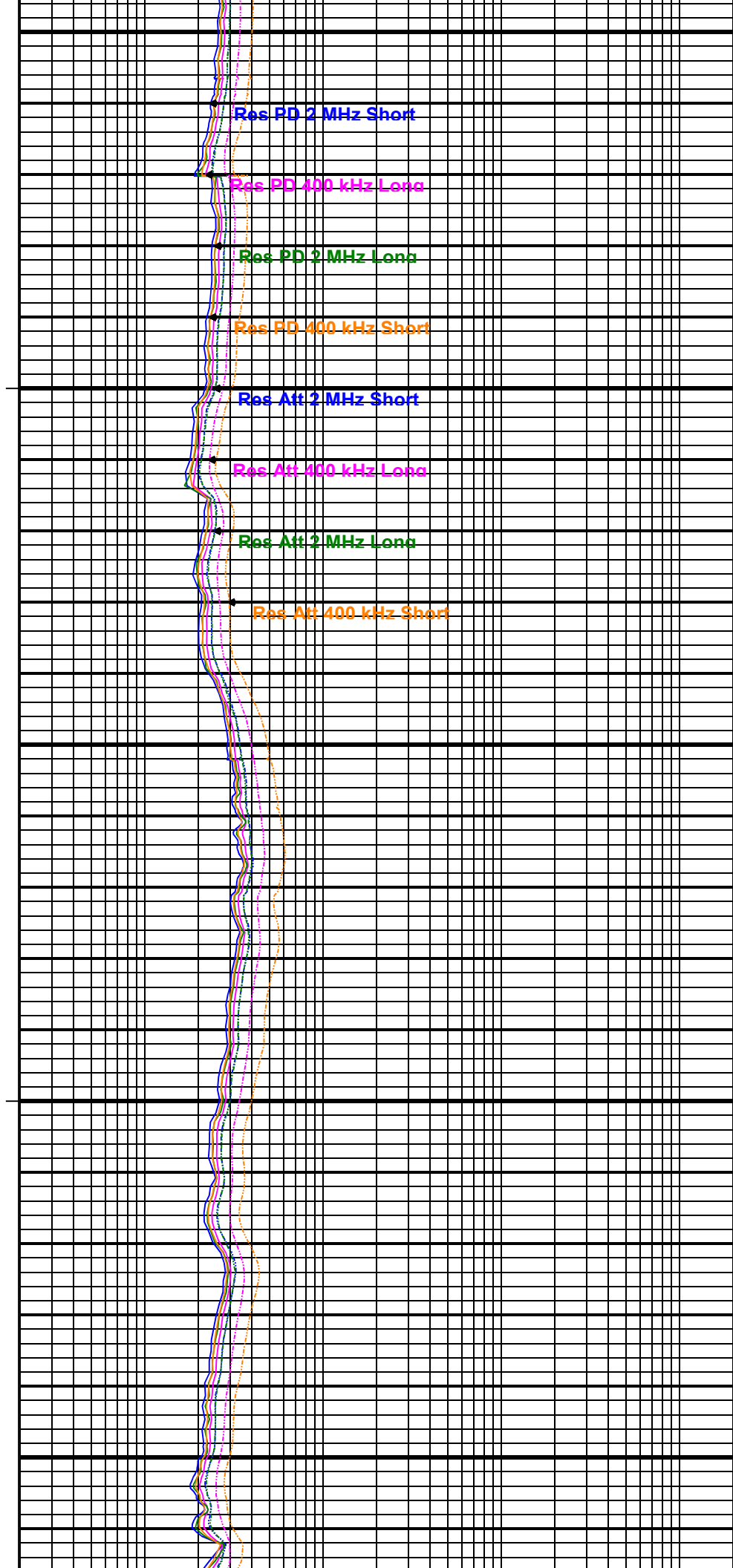


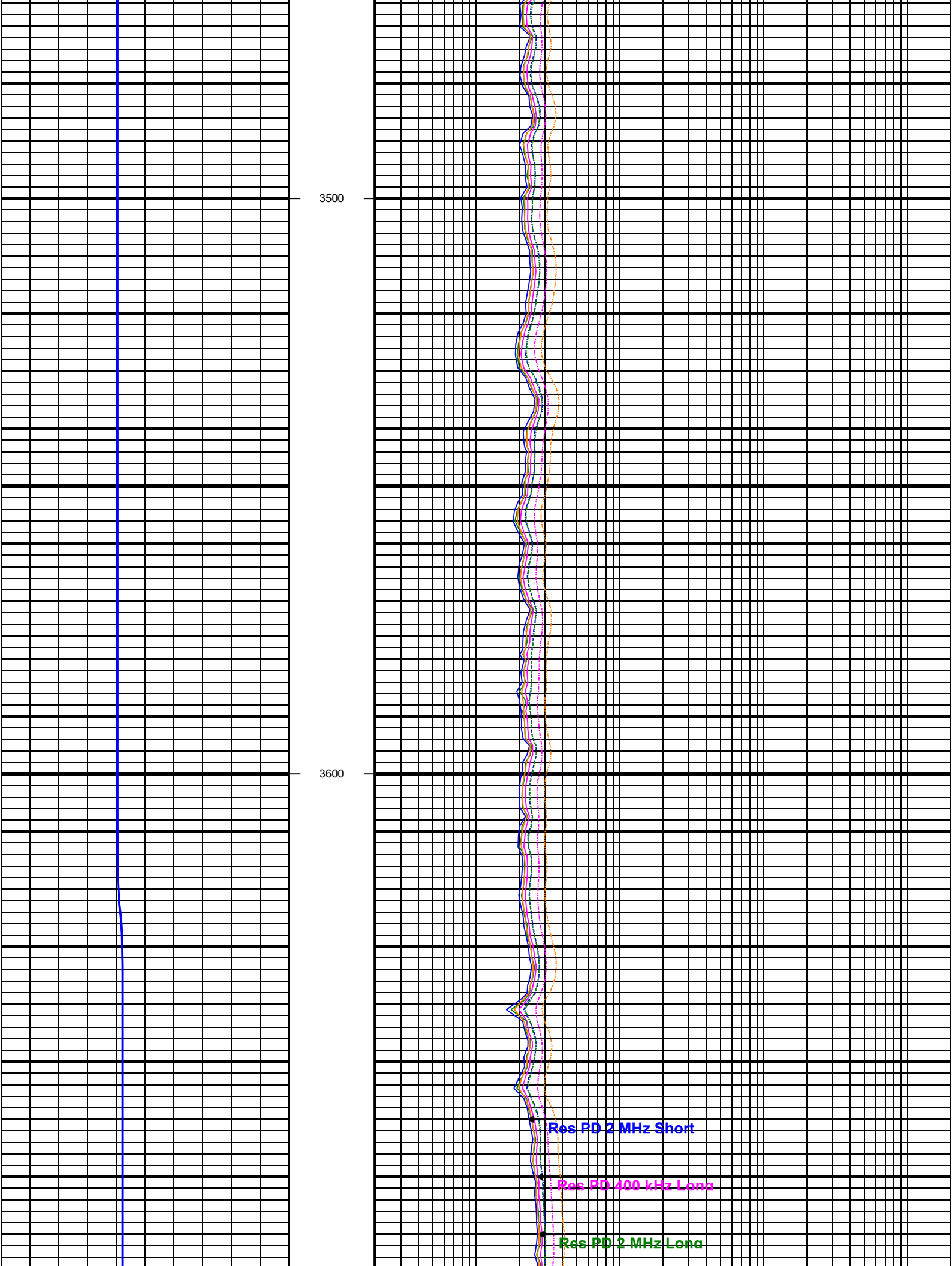


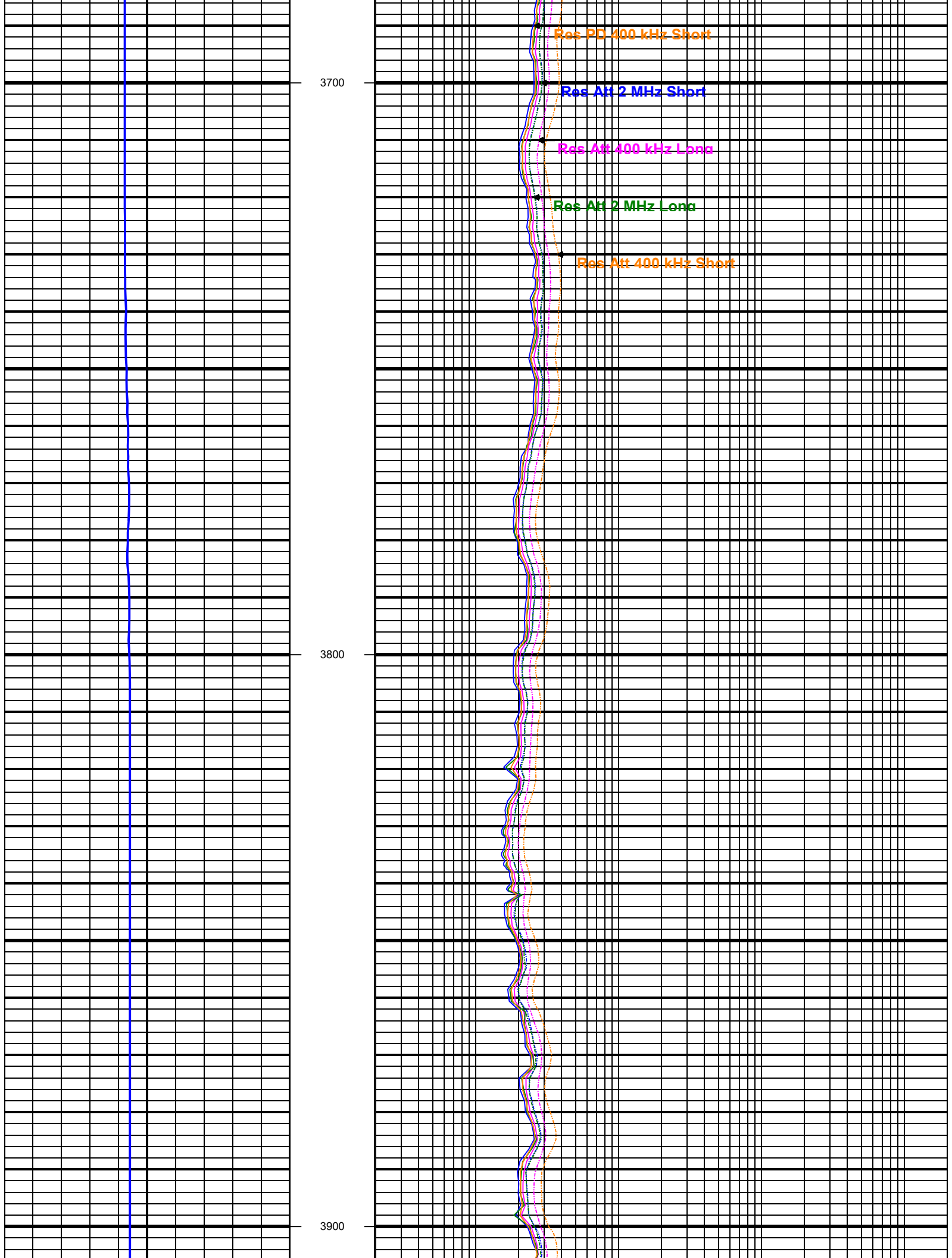


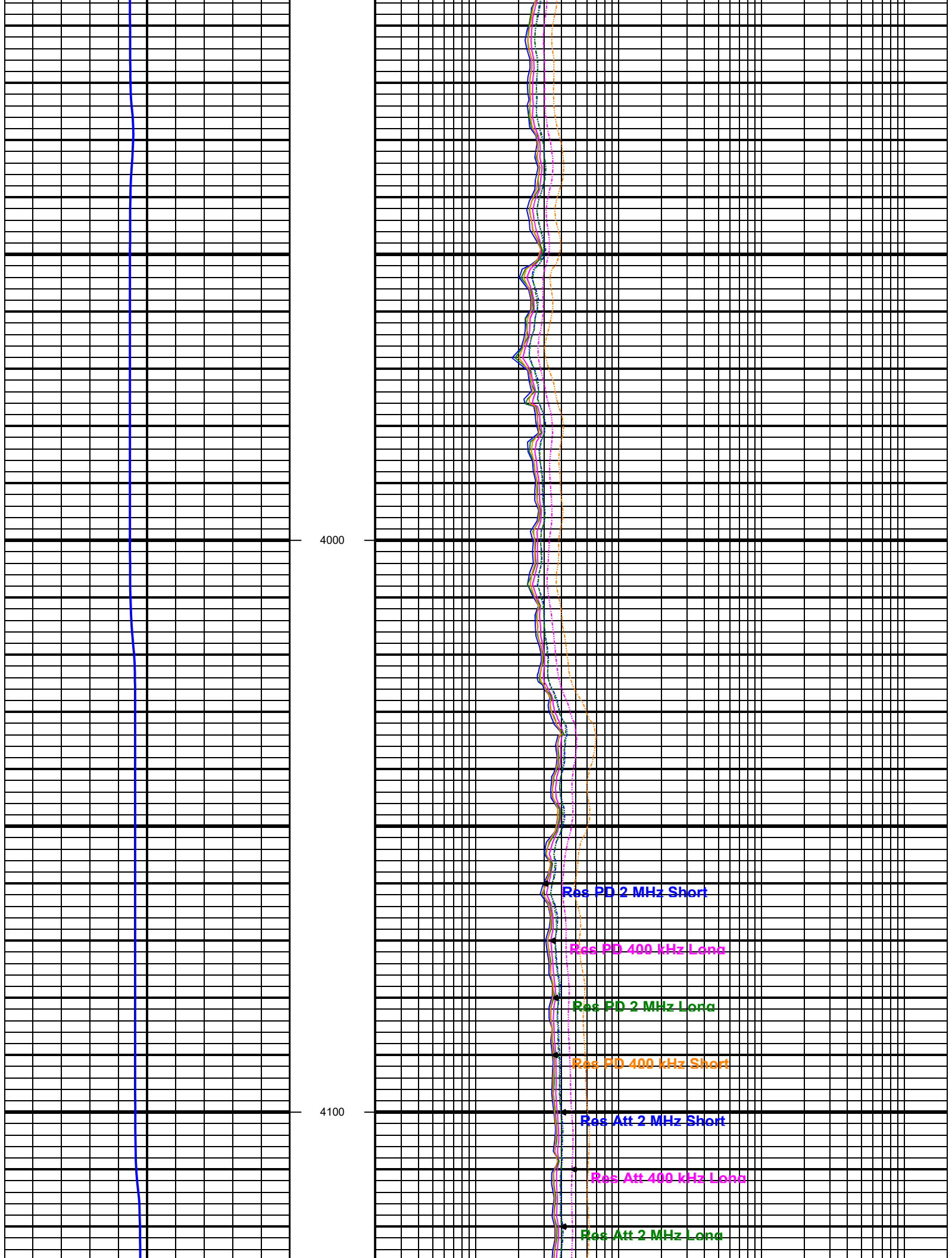
3300

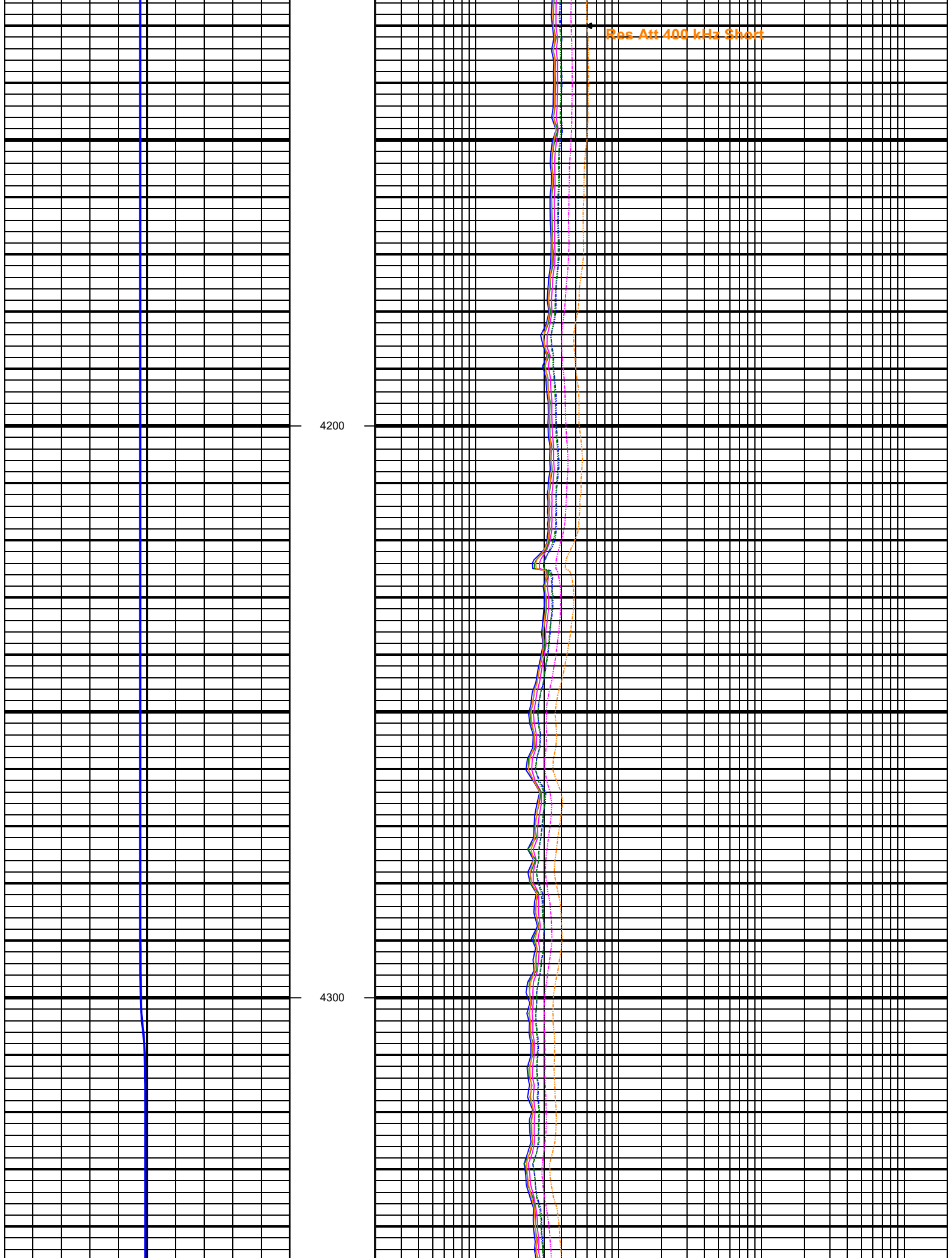
3400

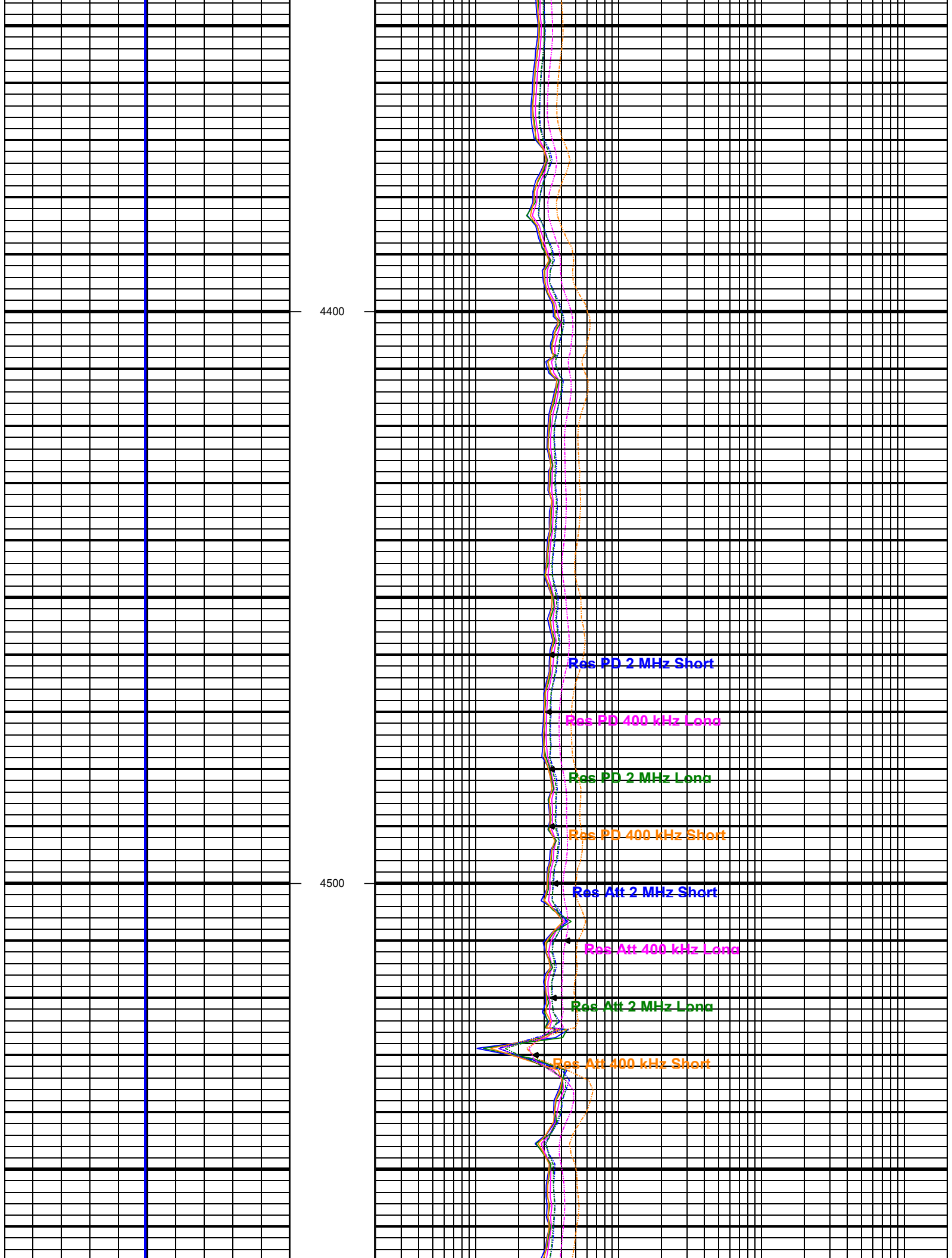


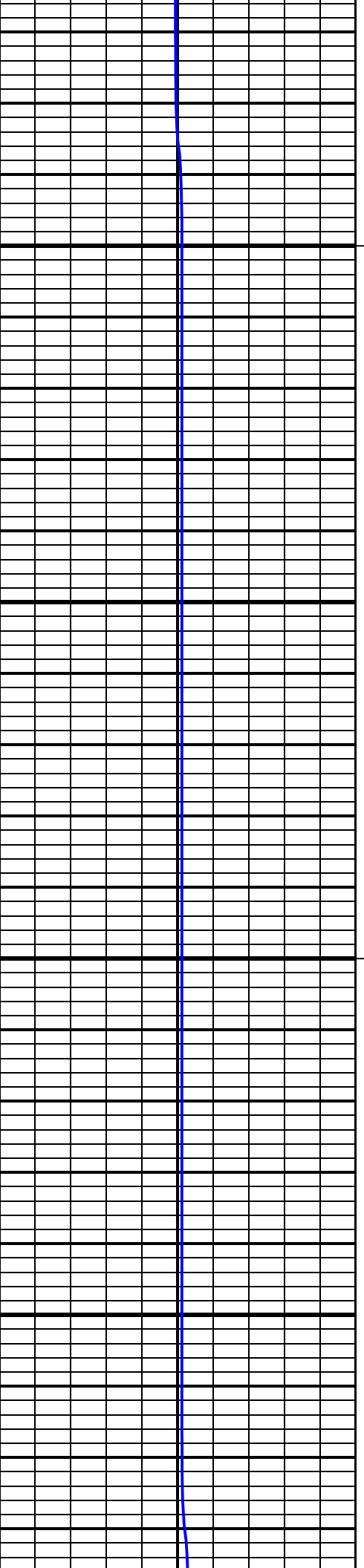






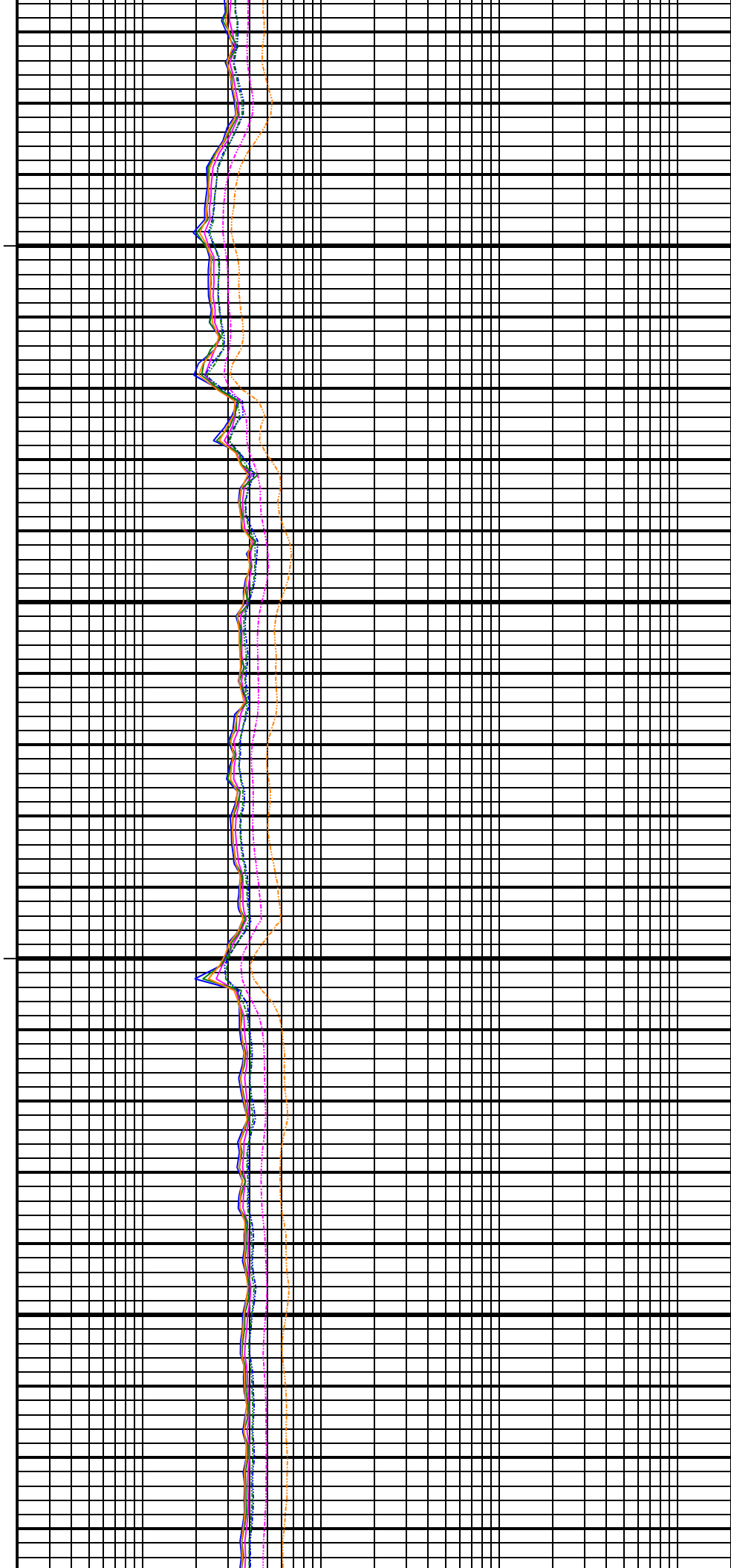


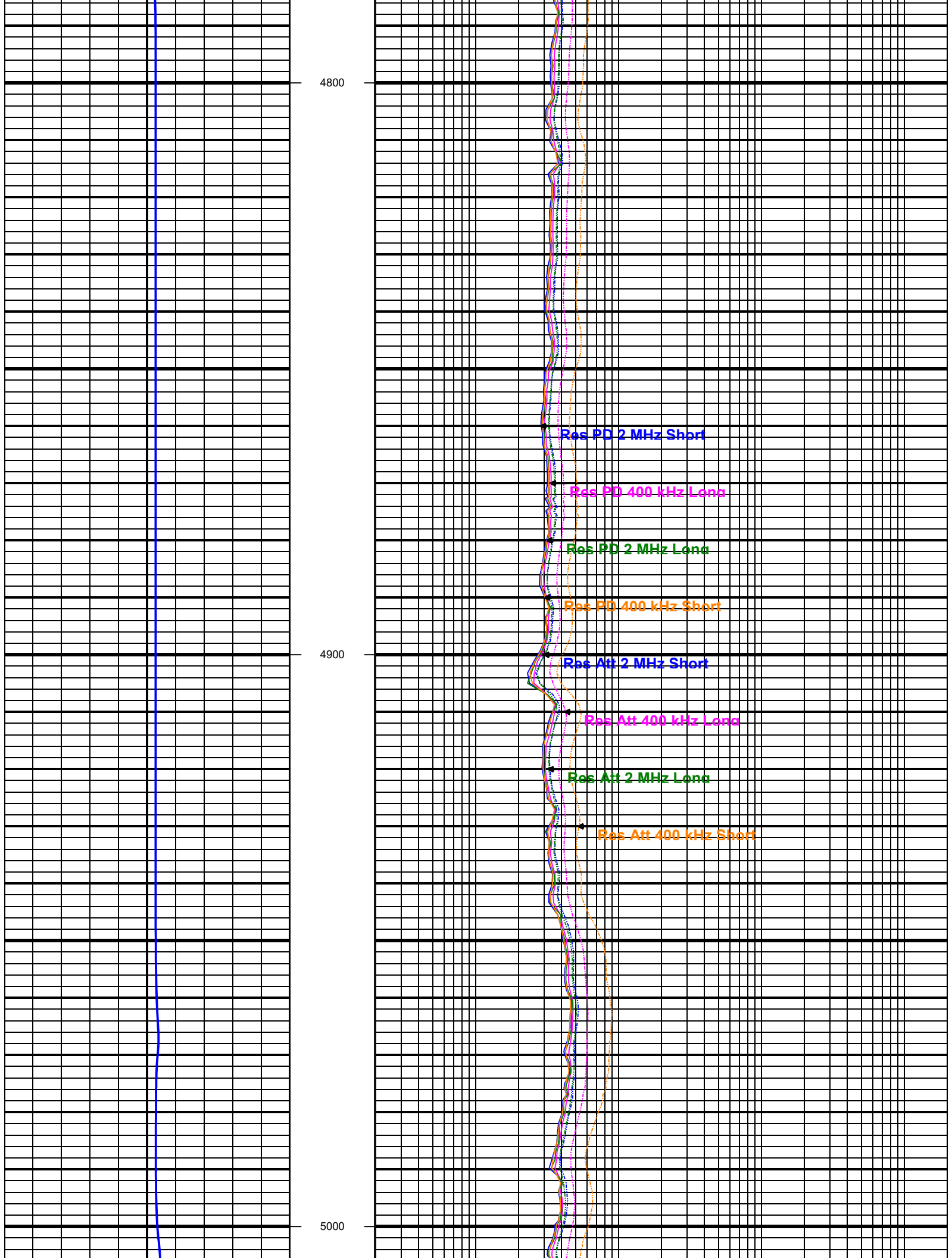


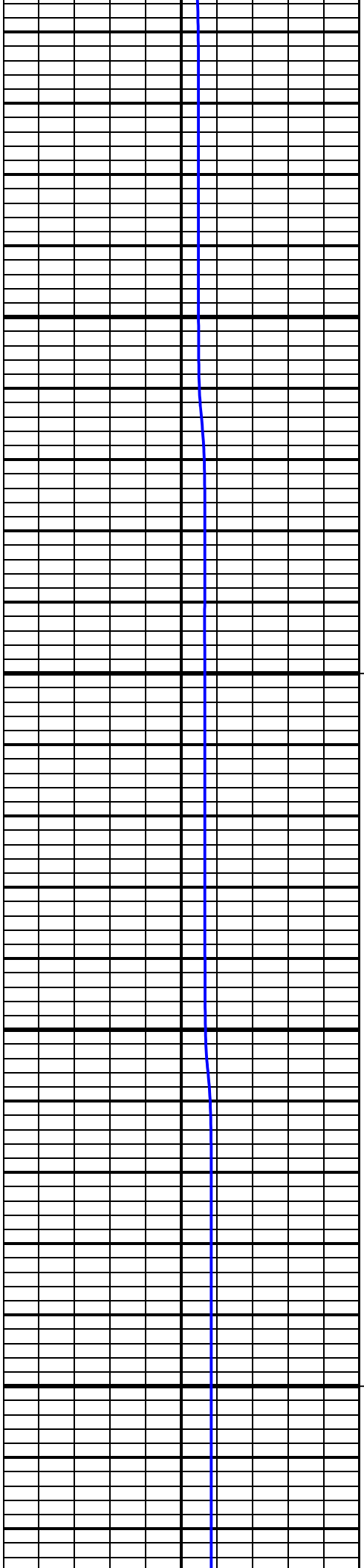


4600

4700

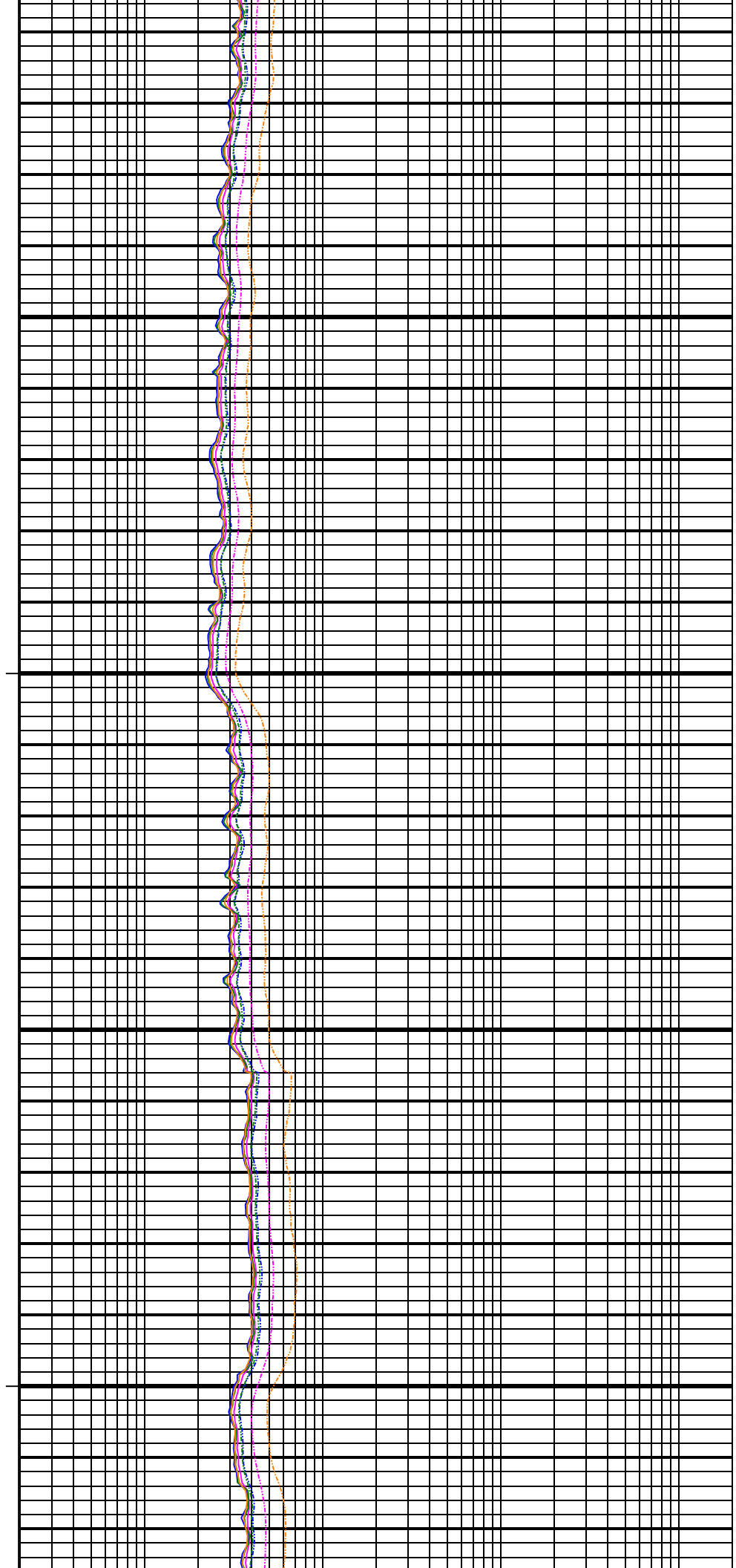


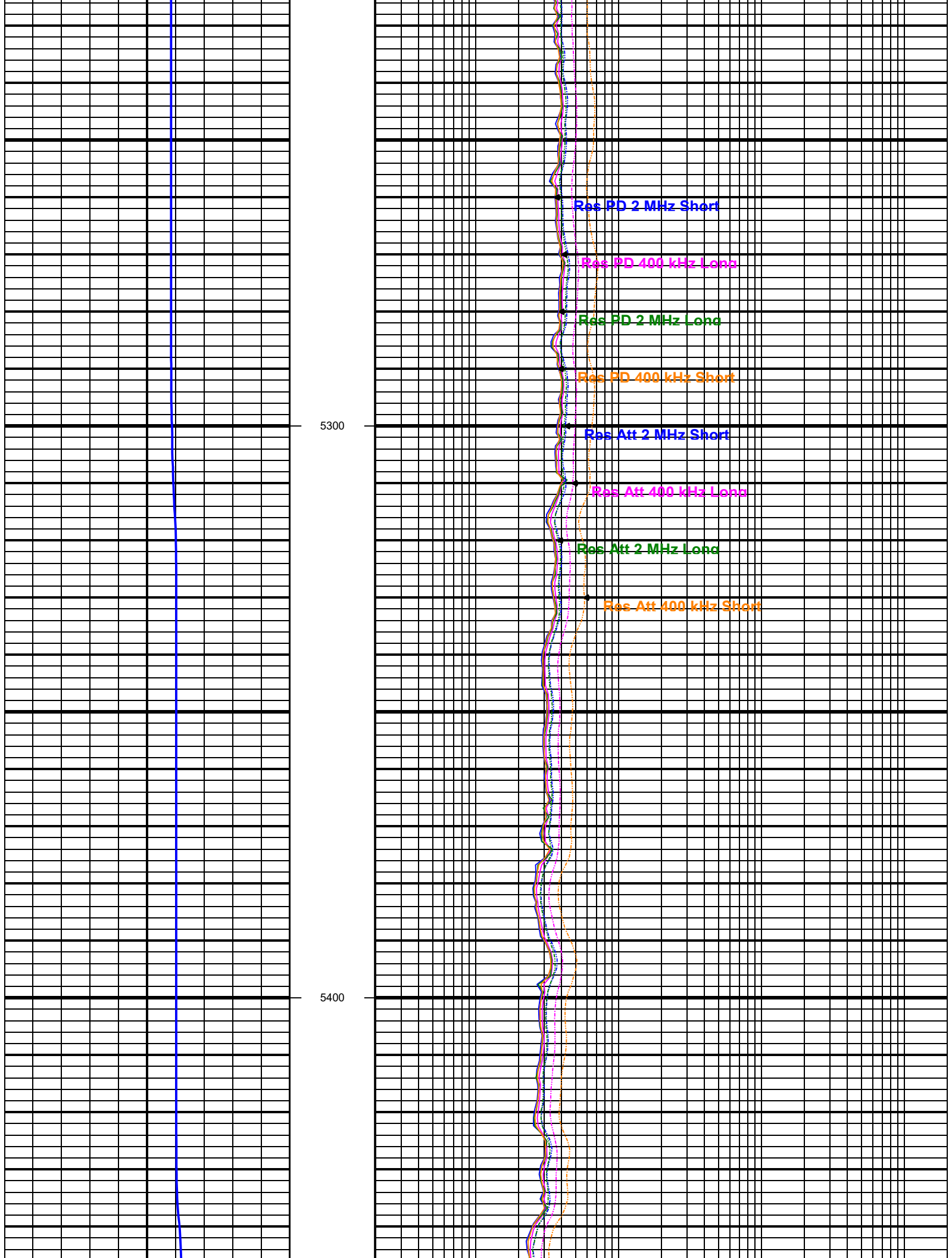


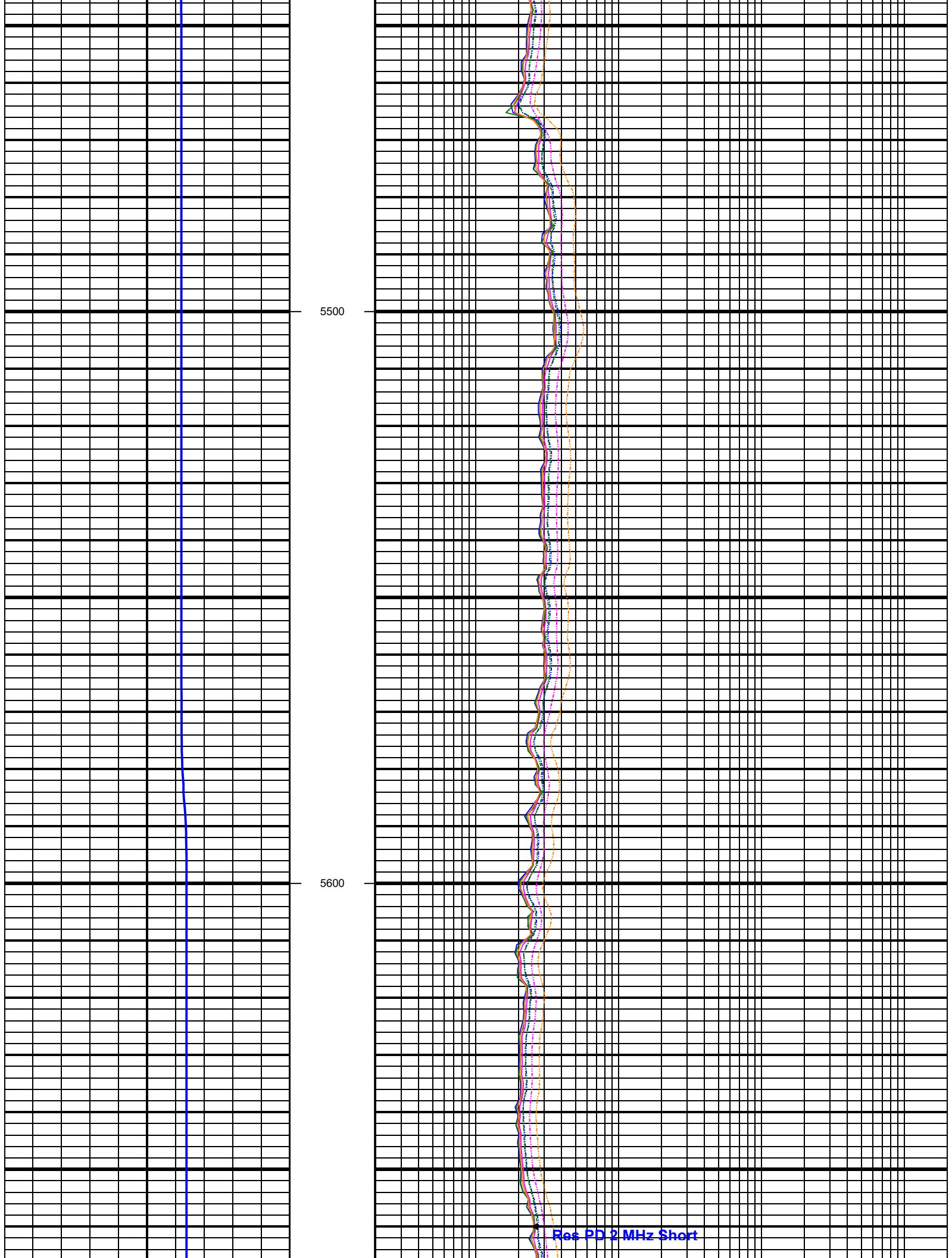


5100

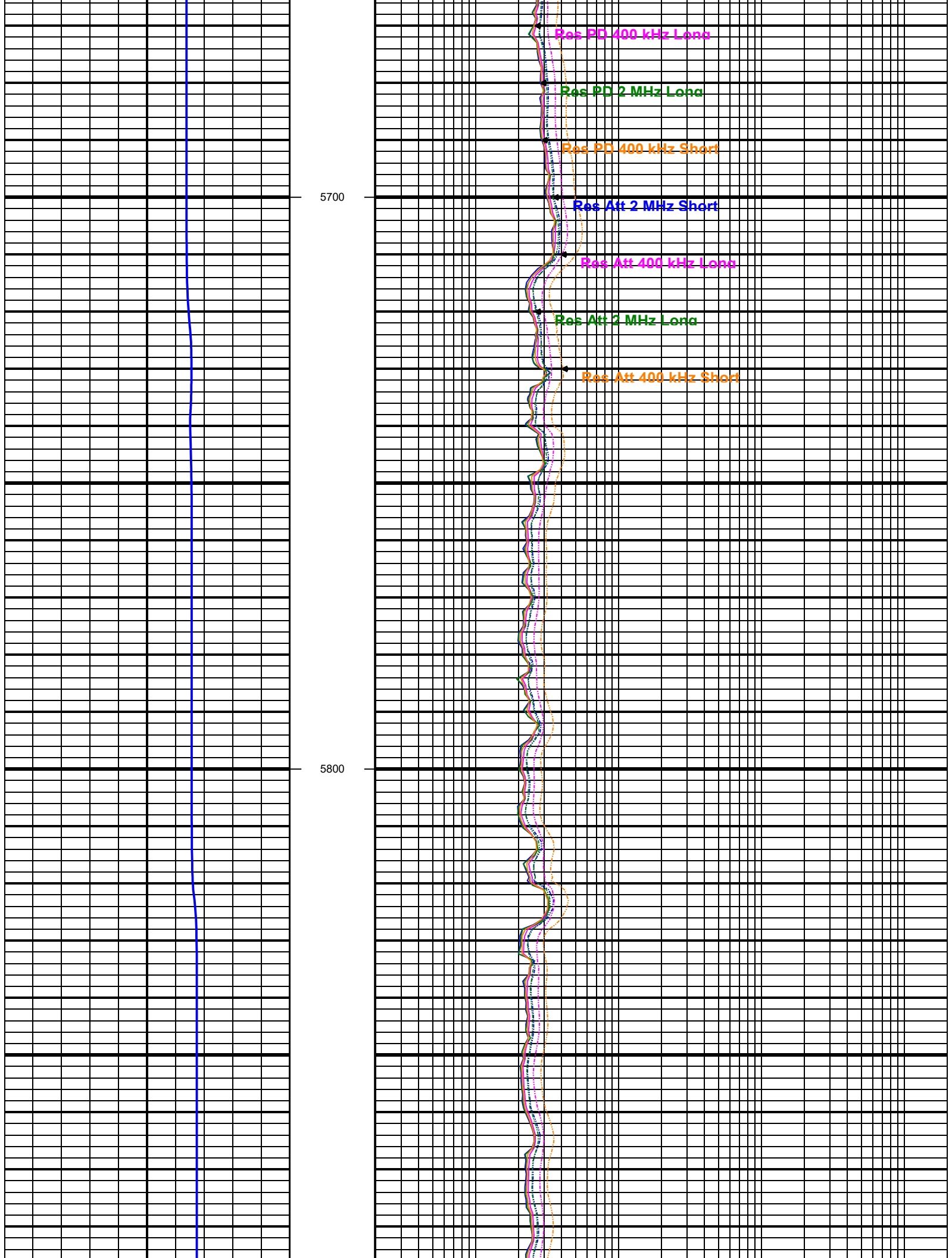
5200

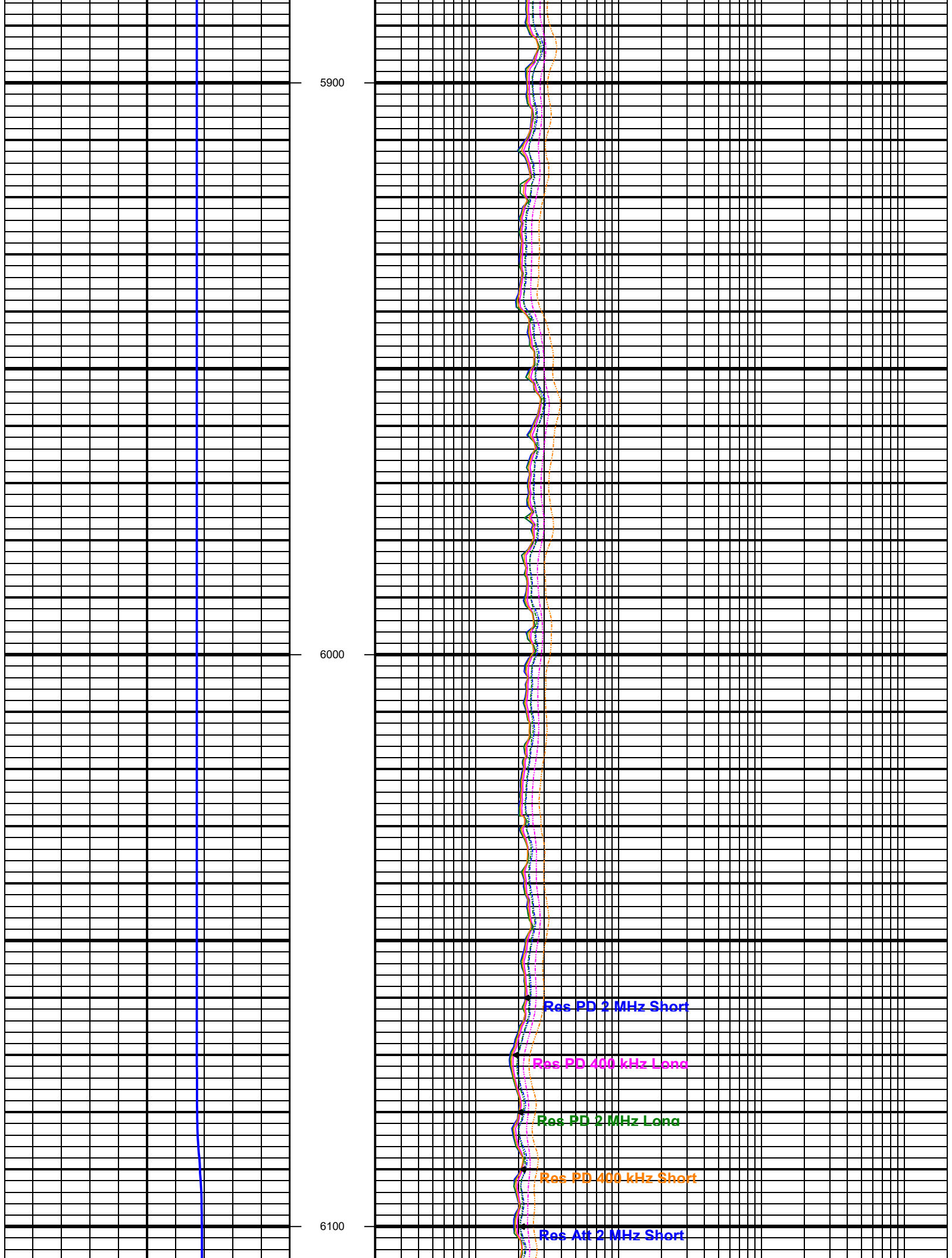


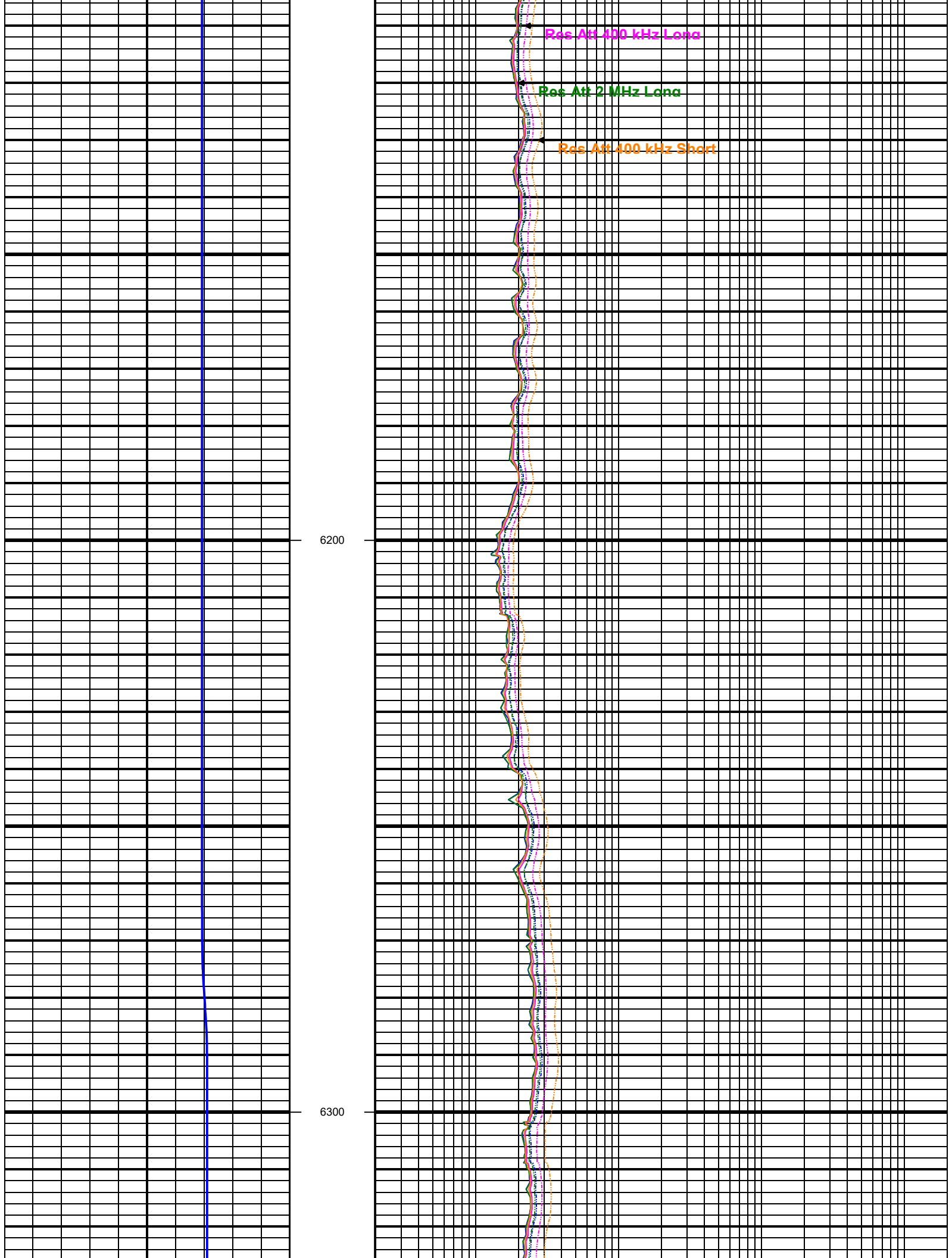


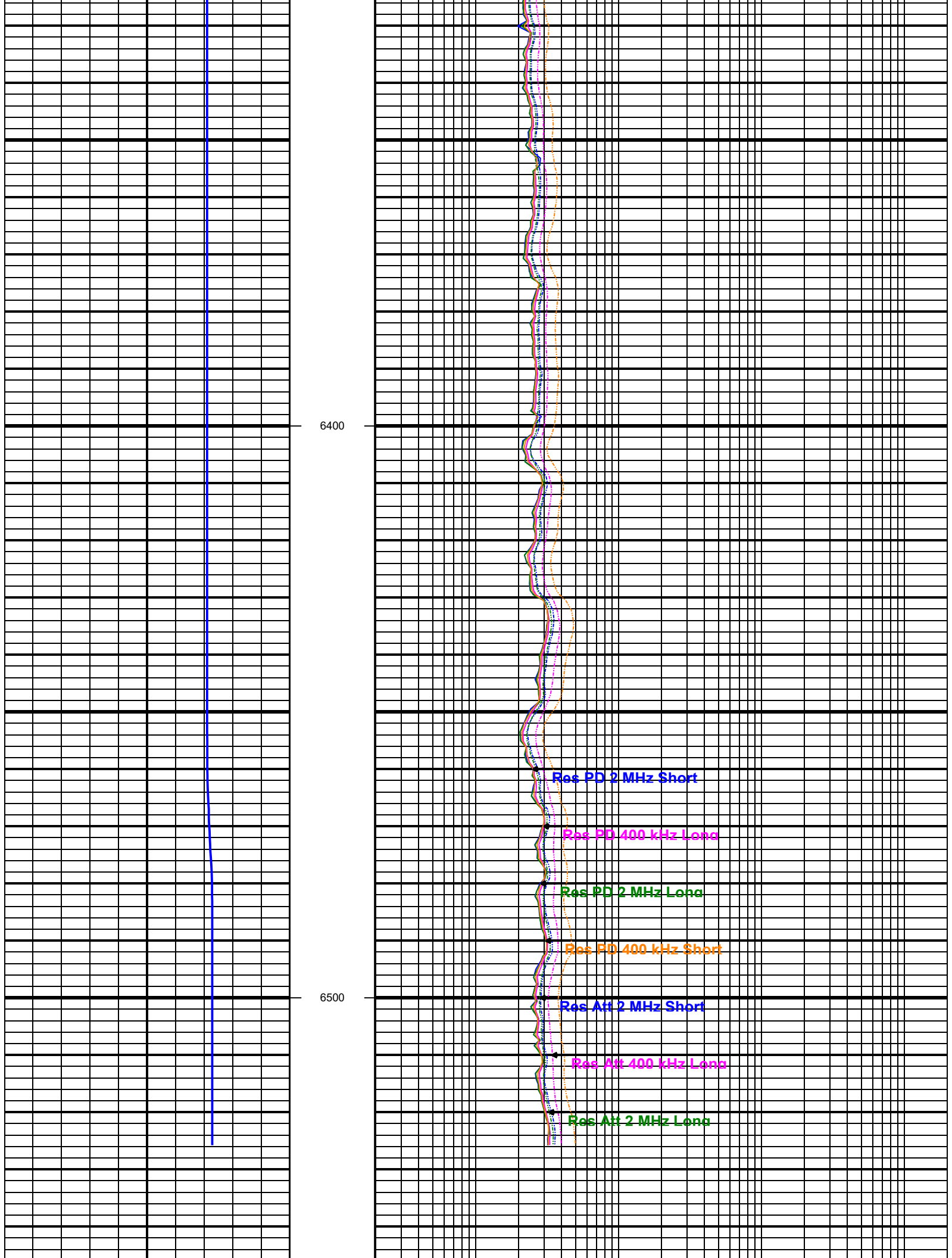


Res PD 2 MHz Short









6550	
1:240 FEET MD	RPCECSHM Res PD 2 MHz Short ohm-m <div>0.2 2000</div>
	RPCECLM Res PD 400 kHz Long ohm-m <div>0.2 2000</div>
	RPCECHM Res PD 2 MHz Long ohm-m <div>0.2 2000</div>
	RPCECSLM Res PD 400 kHz Short ohm-m <div>0.2 2000</div>
	RACECSHM Res Att 2 MHz Short ohm-m <div>0.2 2000</div>
	RACECLM Res Att 400 kHz Long ohm-m <div>0.2 2000</div>
	RACECHM Res Att 2 MHz Long ohm-m <div>0.2 2000</div>
	RACECSLM Res Att 400 kHz Short ohm-m <div>0.2 2000</div>

Altitude Energy Partners does not guarantee the accuracy or correctness of interpretations provided in or from this log. Since all interpretations are opinions based on measurements, Altitude Energy Partners shall under no circumstances be responsible for consequential damages or any other loss, costs, or expenses incurred or sustained in connection with the use of any such interpretations.