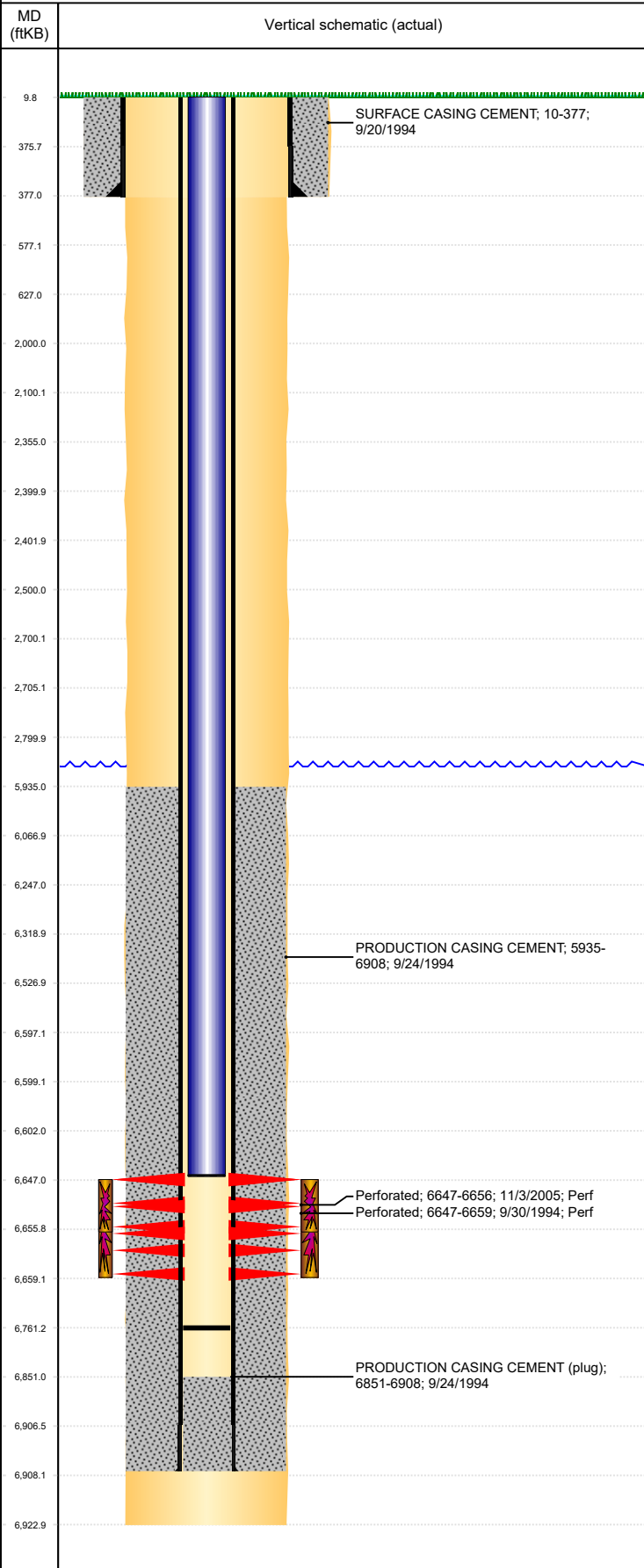




# P&A Wellbore For State

Well Name: **MAGGIE B13-13**

Land, Original Hole, 7/26/2022 3:28:25 PM



Well Header									
Surface UWI 0512318469		Business Unit Rockies		Gov Auth Dist		Prod Tree Loc Land			
Orig. KB to Gnd (ft) 10.00		Original Spud Date 9/19/1994		Abandon Date		Well Sub-Status PR		High...	
								N	
Comment									
Surface Location (Congressional)									
Qtr 3 SW	Qtr 4 SW	Section 13	Twonshp 5	Twonsh... N	Range 64	Rng E... W	Latitude (°) 40.39361371	Longitude (°) -104.50633594	
								2	
Wellbore Sections									
Section Des		Hole Size (in)		Act Top (ftKB)		Act Btm (ftKB)			
SURFACE		12 1/4		10.0		377.0			
PRODUCTION		7 7/8		377.0		6,923.0			
Casing Strings									
Csg Des		Run Date		OD (in)		Wt/Len (lb/ft)		Grade	
Surface		9/20/1994		8 5/8		24.00		?	
Production Casing		9/30/1994		2 7/8		6.50		N-80	
								10	
								377	
								6908	
Cement									
Des		Start Date		Top (ftKB)		Btm (ftKB)			
SURFACE CASING CEMENT		9/20/1994		10.0		377.0			
PRODUCTION CASING CEMENT		9/24/1994		5,935.0		6,908.0			
Zone Statuses									
Zone Name		Status Date		Status		Fluid Type		Job	
CODELL		11/12/1994		PR		Oil		DRILLING/COMPLETION - ORIGINAL, 9/19/1994...	
CODELL		11/12/2005		PR		Oil		RE-FRAC, 11/1/2005 00:00	
Perforation Data									
Linked Zone		Explosive Type		Entered Shot Total		Top (ftKB)		Btm (ftKB)	
CODELL, Original Hole				48		6,647.0		6,659.0	
CODELL, Original Hole				36		6,647.0		6,656.0	
								11/3/2005	
Stimulation Intervals									
Zone		Start Date		Top (ftKB)		Btm (ftKB)			
CODELL, Original Hole		9/30/1994		6,647.0		6,659.0			
CODELL, Original Hole		11/11/2005		6,647.0		6,656.0			
Other In Hole									
Run Date		Des		Make		OD (in)		Top (ftKB)	
Logs									
Date		Type				Depth Top (MD) (ftKB)		Btm (ftKB)	
9/23/1994		COMPENSATED DENSITY				5,900		6,920.0	
9/23/1994		INDUCTION				5,900		6,920.0	
9/29/1994		CBL/CCL/GR				5,700		6,844.0	
2/15/2013		GYRO				10		6,600.0	
Plug Back Total Depths									
Date		Type		Com				PBTD (ftKB)	
9/10/2013		FILL						6,750	
2/9/2015		FILL		102' RAT HOLE DID NOT C/O				6,761	