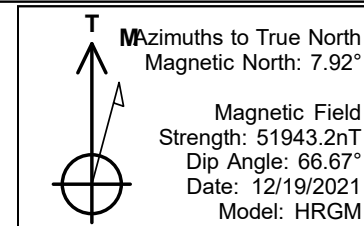


# PDC Energy Inc. DJ Basin

Bost Farm 38N-8C-L  
 Bost Farms 5-7 Pad SEC.7-T5N-R66W  
 North American Datum 1983 , US State Plane 1983, Colorado Northern Zone  
 Ground Elevation: 4874.0  
 +N/-S +E/-W Northing Easting Latitude Longitude Slot  
 0.0 0.0 1394603.83 3186956.76 40.414646 -104.828575  
 Patterson 272 - RKB 28' WELL @ 4902ft (Patterson 272 - RKB 28')



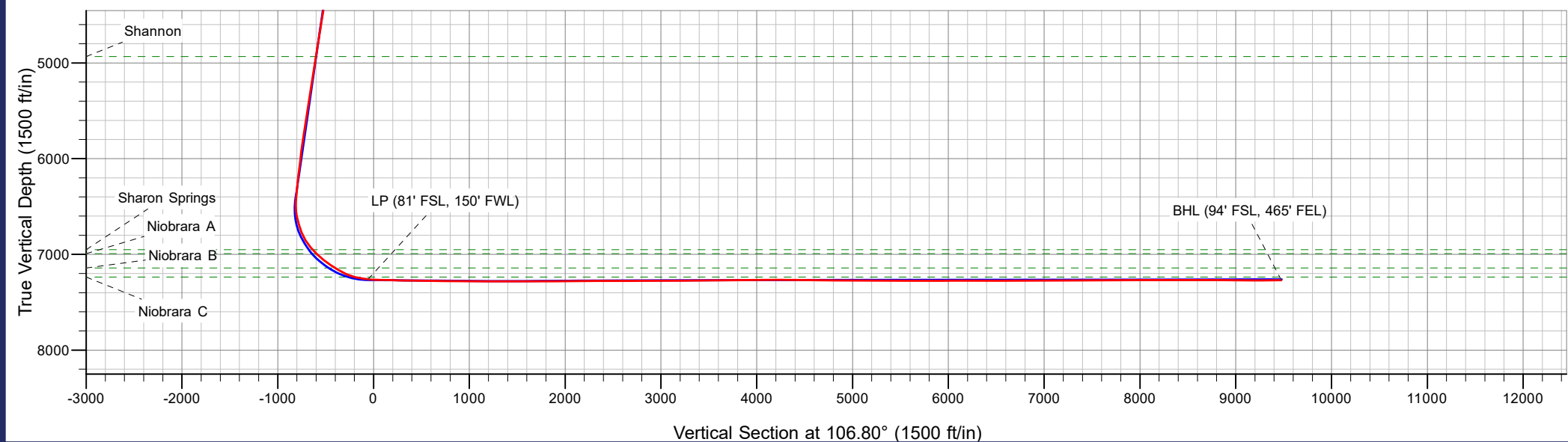
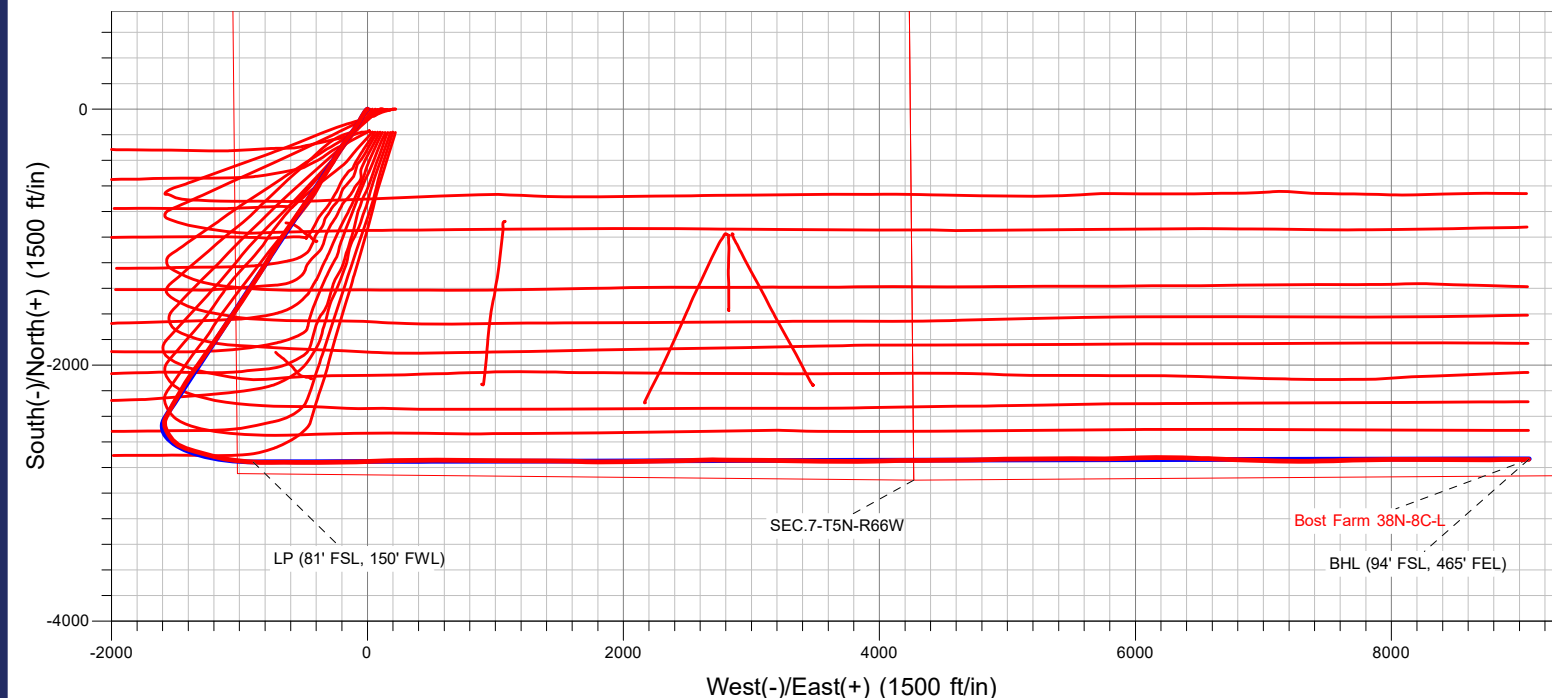
Bost Farms 5-7 Pad SEC.7-T5N-R66W  
 Bost Farm 38N-8C-L  
 38N-8C-L Final Surveys  
 14:58, May 16 2022



## ANNOTATIONS

MD	TVD	Annotation
8366.6	7260.1	LP (81' FSL, 150' FWL)
18333.0	7270.3	BHL (94' FSL, 465' FEL)

**FINAL SURVEY**  
**Projected Bottom Hole Location**  
**18333' MD / 7270.3' TVD**  
**90.14° INC / 90.75° AZM**  
**94' FSL / 465' FEL**





# **PDC Energy Inc. DJ Basin**

**SEC.7-T5N-R66W**

**Bost Farms 5-7 Pad SEC.7-T5N-R66W**

**Bost Farm 38N-8C-L**

**Bost Farm 38N-8C-L Wellbore #1**

**Survey: Surface**

## **Standard Survey Report**

**16 May, 2022**

<b>Company:</b>	PDC Energy Inc. DJ Basin	<b>Local Co-ordinate Reference:</b>	Well Bost Farm 38N-8C-L
<b>Project:</b>	SEC.7-T5N-R66W	<b>TVD Reference:</b>	WELL @ 4902ft (Patterson 272 - RKB 28')
<b>Site:</b>	Bost Farms 5-7 Pad SEC.7-T5N-R66W	<b>MD Reference:</b>	WELL @ 4902ft (Patterson 272 - RKB 28')
<b>Well:</b>	Bost Farm 38N-8C-L	<b>North Reference:</b>	True
<b>Wellbore:</b>	Bost Farm 38N-8C-L Wellbore #1	<b>Survey Calculation Method:</b>	Minimum Curvature
<b>Design:</b>	38N-8C-L_Final Surveys	<b>Database:</b>	US_EDM

<b>Project</b>	SEC.7-T5N-R66W, Weld County, Co		
<b>Map System:</b>	US State Plane 1983	<b>System Datum:</b>	Mean Sea Level
<b>Geo Datum:</b>	North American Datum 1983		
<b>Map Zone:</b>	Colorado Northern Zone		Using geodetic scale factor

<b>Site</b>	Bost Farms 5-7 Pad SEC.7-T5N-R66W		
<b>Site Position:</b>		<b>Northing:</b>	1,394,603.55 usft
<b>From:</b>	Lat/Long	<b>Easting:</b>	3,187,178.01 usft
<b>Position Uncertainty:</b>	0.0 ft	<b>Slot Radius:</b>	13-3/16 "
		<b>Latitude:</b>	40.414641
		<b>Longitude:</b>	-104.827780
		<b>Grid Convergence:</b>	0.43 °

<b>Well</b>	Bost Farm 38N-8C-L		
<b>Well Position</b>	<b>+N/-S</b>	0.0 ft	<b>Northing:</b>
	<b>+E/-W</b>	0.0 ft	<b>Easting:</b>
<b>Position Uncertainty</b>	0.0 ft	<b>Wellhead Elevation:</b>	ft
		<b>Latitude:</b>	40.414646
		<b>Longitude:</b>	-104.828575
		<b>Ground Level:</b>	4,874.0 ft

<b>Wellbore</b>	Bost Farm 38N-8C-L Wellbore #1		
<b>Magnetics</b>	<b>Model Name</b>	<b>Sample Date</b>	<b>Declination (°)</b>
	HRGM	12/19/2021	7.92
			<b>Dip Angle (°)</b>
			66.67
			<b>Field Strength (nT)</b>
			51,943.22349337

<b>Design</b>	38N-8C-L_Final Surveys		
<b>Audit Notes:</b>			
<b>Version:</b>	1.0	<b>Phase:</b>	ACTUAL
		<b>Tie On Depth:</b>	0.0
<b>Vertical Section:</b>	<b>Depth From (TVD) (ft)</b>	<b>+N/-S (ft)</b>	<b>+E/-W (ft)</b>
	0.0	0.0	0.0
			<b>Direction (°)</b>
			106.80

<b>Survey Program</b>	<b>Date</b> 05/16/2022		
<b>From (ft)</b>	<b>To (ft)</b>	<b>Survey (Wellbore)</b>	<b>Tool Name</b>
70.5	18,333.0	Surface (Bost Farm 38N-8C-L Wellbore #1	MWD
			<b>Description</b>
			MWD - Standard

<b>Survey</b>									
<b>Measured Depth (ft)</b>	<b>Inclination (°)</b>	<b>Azimuth (°)</b>	<b>Vertical Depth (ft)</b>	<b>+N/-S (ft)</b>	<b>+E/-W (ft)</b>	<b>Vertical Section (ft)</b>	<b>Dogleg Rate (°/100usft)</b>	<b>Build Rate (°/100usft)</b>	<b>Turn Rate (°/100usft)</b>
0.0	0.00	0.00	0.0	0.0	0.0	0.0	0.00	0.00	0.00
70.5	0.30	182.80	70.5	-0.2	0.0	0.0	0.43	0.43	0.00
161.5	1.60	236.60	161.5	-1.1	-1.1	-0.7	1.59	1.43	59.12
252.5	4.10	222.40	252.4	-4.2	-4.3	-2.9	2.83	2.75	-15.60
344.5	5.30	230.10	344.1	-9.4	-9.8	-6.7	1.47	1.30	8.37
433.5	6.60	218.50	432.6	-16.0	-16.2	-10.8	1.98	1.46	-13.03
522.5	8.40	212.40	520.8	-25.5	-22.8	-14.5	2.21	2.02	-6.85
612.5	10.10	212.00	609.6	-37.8	-30.5	-18.3	1.89	1.89	-0.44
702.5	12.70	210.40	697.9	-53.0	-39.7	-22.7	2.91	2.89	-1.78
791.5	14.50	208.10	784.4	-71.3	-49.9	-27.2	2.11	2.02	-2.58

<b>Company:</b>	PDC Energy Inc. DJ Basin	<b>Local Co-ordinate Reference:</b>	Well Bost Farm 38N-8C-L
<b>Project:</b>	SEC.7-T5N-R66W	<b>TVD Reference:</b>	WELL @ 4902ft (Patterson 272 - RKB 28')
<b>Site:</b>	Bost Farms 5-7 Pad SEC.7-T5N-R66W	<b>MD Reference:</b>	WELL @ 4902ft (Patterson 272 - RKB 28')
<b>Well:</b>	Bost Farm 38N-8C-L	<b>North Reference:</b>	True
<b>Wellbore:</b>	Bost Farm 38N-8C-L Wellbore #1	<b>Survey Calculation Method:</b>	Minimum Curvature
<b>Design:</b>	38N-8C-L_Final Surveys	<b>Database:</b>	US_EDM

Survey									
Measured Depth (ft)	Inclination (°)	Azimuth (°)	Vertical Depth (ft)	+N/-S (ft)	+E/-W (ft)	Vertical Section (ft)	Dogleg Rate (°/100usft)	Build Rate (°/100usft)	Turn Rate (°/100usft)
794.7	14.54	208.18	787.5	-72.0	-50.3	-27.4	1.47	1.34	2.42
<b>Fox Hills Aq Base</b>									
880.5	15.70	210.10	870.3	-91.5	-61.2	-32.2	1.47	1.35	2.24
970.5	17.00	210.40	956.6	-113.4	-74.0	-38.0	1.45	1.44	0.33
1,059.5	17.80	214.10	1,041.6	-135.9	-88.2	-45.2	1.53	0.90	4.16
1,149.5	19.60	215.50	1,126.8	-159.6	-104.7	-54.1	2.06	2.00	1.56
1,238.5	21.20	218.70	1,210.2	-184.3	-123.4	-64.9	2.19	1.80	3.60
1,328.5	22.40	216.40	1,293.8	-210.8	-143.7	-76.7	1.64	1.33	-2.56
1,417.5	24.80	214.80	1,375.4	-239.8	-164.5	-88.2	2.79	2.70	-1.80
1,506.5	27.00	215.70	1,455.4	-271.5	-186.9	-100.5	2.51	2.47	1.01
1,595.5	28.30	211.70	1,534.3	-305.8	-209.8	-112.5	2.55	1.46	-4.49
1,691.5	28.00	212.20	1,618.9	-344.3	-233.7	-124.3	0.40	-0.31	0.52
1,788.0	25.35	209.03	1,705.1	-381.5	-255.8	-134.7	3.12	-2.75	-3.28
1,884.0	25.68	209.99	1,791.8	-417.5	-276.2	-143.8	0.55	0.34	1.00
1,979.0	25.58	207.62	1,877.4	-453.5	-296.0	-152.3	1.08	-0.11	-2.49
2,073.0	27.16	214.15	1,961.6	-489.2	-317.5	-162.6	3.51	1.68	6.95
2,168.0	27.65	214.49	2,046.0	-525.4	-342.1	-175.7	0.54	0.52	0.36
2,262.0	26.95	213.76	2,129.5	-561.0	-366.3	-188.6	0.83	-0.74	-0.78
2,357.0	26.54	213.50	2,214.4	-596.6	-390.0	-200.9	0.45	-0.43	-0.27
2,452.0	27.00	214.20	2,299.2	-632.2	-413.8	-213.5	0.59	0.48	0.74
2,546.0	27.37	214.39	2,382.8	-667.7	-438.0	-226.4	0.40	0.39	0.20
2,641.0	27.99	215.13	2,466.9	-703.9	-463.2	-240.0	0.75	0.65	0.78
2,735.0	28.20	215.66	2,549.8	-740.0	-488.8	-254.1	0.35	0.22	0.56
2,830.0	27.71	215.16	2,633.8	-776.3	-514.6	-268.4	0.57	-0.52	-0.53
2,925.0	28.54	215.60	2,717.5	-812.8	-540.6	-282.6	0.90	0.87	0.46
3,019.0	27.69	214.44	2,800.4	-849.1	-566.0	-296.5	1.08	-0.90	-1.23
3,114.0	27.23	214.39	2,884.7	-885.2	-590.7	-309.7	0.48	-0.48	-0.05
3,209.0	28.16	213.76	2,968.9	-921.8	-615.5	-322.9	1.03	0.98	-0.66
3,304.0	26.98	212.45	3,053.1	-958.6	-639.5	-335.2	1.40	-1.24	-1.38
3,399.0	27.75	211.95	3,137.4	-995.6	-662.8	-346.8	0.85	0.81	-0.53
3,493.0	27.58	212.76	3,220.7	-1,032.4	-686.1	-358.5	0.44	-0.18	0.86
3,588.0	27.35	213.94	3,305.0	-1,069.0	-710.2	-371.0	0.62	-0.24	1.24
3,683.0	27.26	212.22	3,389.4	-1,105.5	-734.0	-383.2	0.84	-0.09	-1.81
3,778.0	26.07	210.22	3,474.3	-1,142.0	-756.1	-393.8	1.57	-1.25	-2.11
3,872.0	25.32	209.49	3,559.0	-1,177.3	-776.4	-403.1	0.87	-0.80	-0.78
3,966.0	26.36	212.40	3,643.6	-1,212.4	-797.5	-413.1	1.74	1.11	3.10
4,060.0	27.88	211.04	3,727.3	-1,248.9	-820.0	-424.1	1.75	1.62	-1.45
4,076.1	27.77	211.57	3,741.5	-1,255.3	-823.9	-426.0	1.68	-0.67	3.30
<b>Parkman</b>									
4,155.0	27.27	214.23	3,811.5	-1,285.9	-843.7	-436.1	1.68	-0.64	3.37
4,250.0	27.82	212.53	3,895.7	-1,322.6	-867.9	-448.6	1.01	0.58	-1.79
4,344.0	27.27	213.58	3,979.1	-1,359.0	-891.6	-460.8	0.78	-0.59	1.12
4,534.0	26.62	210.82	4,148.4	-1,431.9	-937.4	-483.7	0.74	-0.34	-1.45
4,628.0	27.22	211.31	4,232.3	-1,468.3	-959.4	-494.2	0.68	0.64	0.52

<b>Company:</b>	PDC Energy Inc. DJ Basin	<b>Local Co-ordinate Reference:</b>	Well Bost Farm 38N-8C-L
<b>Project:</b>	SEC.7-T5N-R66W	<b>TVD Reference:</b>	WELL @ 4902ft (Patterson 272 - RKB 28')
<b>Site:</b>	Bost Farms 5-7 Pad SEC.7-T5N-R66W	<b>MD Reference:</b>	WELL @ 4902ft (Patterson 272 - RKB 28')
<b>Well:</b>	Bost Farm 38N-8C-L	<b>North Reference:</b>	True
<b>Wellbore:</b>	Bost Farm 38N-8C-L Wellbore #1	<b>Survey Calculation Method:</b>	Minimum Curvature
<b>Design:</b>	38N-8C-L_Final Surveys	<b>Database:</b>	US_EDM

**Survey**

Measured Depth (ft)	Inclination (°)	Azimuth (°)	Vertical Depth (ft)	+N/-S (ft)	+E/-W (ft)	Vertical Section (ft)	Dogleg Rate (°/100usft)	Build Rate (°/100usft)	Turn Rate (°/100usft)
4,690.9	25.88	213.14	4,288.5	-1,492.1	-974.4	-501.6	2.49	-2.13	2.91
<b>Sussex</b>									
4,723.0	25.21	214.14	4,317.5	-1,503.6	-982.1	-505.7	2.49	-2.10	3.12
4,818.0	27.51	213.93	4,402.6	-1,538.6	-1,005.7	-518.1	2.42	2.42	-0.22
5,008.0	26.94	214.60	4,571.5	-1,610.4	-1,054.6	-544.2	0.34	-0.30	0.35
5,102.0	27.39	215.63	4,655.2	-1,645.5	-1,079.3	-557.7	0.69	0.48	1.10
5,197.0	26.17	213.19	4,740.0	-1,680.8	-1,103.5	-570.7	1.73	-1.28	-2.57
5,292.0	27.30	216.69	4,824.8	-1,715.8	-1,128.0	-584.0	2.04	1.19	3.68
5,386.0	27.18	213.76	4,908.4	-1,751.0	-1,152.8	-597.6	1.43	-0.13	-3.12
5,413.1	27.17	213.89	4,932.5	-1,761.2	-1,159.7	-601.2	0.22	-0.04	0.48
<b>Shannon</b>									
5,576.0	27.11	214.67	5,077.5	-1,822.7	-1,201.5	-623.6	0.22	-0.04	0.48
5,670.0	27.45	215.01	5,161.0	-1,858.0	-1,226.1	-636.9	0.40	0.36	0.36
5,765.0	27.45	215.15	5,245.3	-1,893.8	-1,251.3	-650.7	0.07	0.00	0.15
5,860.0	26.68	214.38	5,329.9	-1,929.4	-1,276.0	-664.0	0.89	-0.81	-0.81
5,956.0	27.42	214.78	5,415.4	-1,965.3	-1,300.7	-677.3	0.79	0.77	0.42
6,049.0	25.64	216.16	5,498.6	-1,999.1	-1,324.8	-690.6	2.03	-1.91	1.48
6,239.0	27.11	214.73	5,668.9	-2,067.9	-1,373.7	-717.6	0.84	0.77	-0.75
6,333.0	26.36	212.66	5,752.8	-2,103.1	-1,397.2	-729.9	1.27	-0.80	-2.20
6,428.0	27.50	213.98	5,837.5	-2,139.0	-1,420.8	-742.1	1.35	1.20	1.39
6,523.0	27.55	208.91	5,921.8	-2,176.5	-1,443.7	-753.2	2.47	0.05	-5.34
6,618.0	27.48	211.39	6,006.0	-2,214.4	-1,465.8	-763.3	1.21	-0.07	2.61
6,712.0	27.53	208.60	6,089.4	-2,252.0	-1,487.5	-773.3	1.37	0.05	-2.97
6,807.0	27.69	211.50	6,173.6	-2,290.1	-1,509.5	-783.3	1.42	0.17	3.05
6,901.0	27.18	208.67	6,257.0	-2,327.5	-1,531.2	-793.3	1.49	-0.54	-3.01
6,996.0	26.36	207.23	6,341.8	-2,365.3	-1,551.3	-801.6	1.10	-0.86	-1.52
7,091.0	27.19	208.51	6,426.7	-2,403.2	-1,571.3	-809.8	1.06	0.87	1.35
7,185.0	23.61	190.82	6,511.7	-2,440.6	-1,585.1	-812.2	8.88	-3.81	-18.82
7,280.0	21.32	165.83	6,599.7	-2,476.1	-1,584.4	-801.3	10.26	-2.41	-26.31
7,375.0	22.80	150.30	6,687.8	-2,508.9	-1,571.1	-779.1	6.32	1.56	-16.35
7,469.0	28.35	152.44	6,772.5	-2,544.5	-1,551.7	-750.2	5.98	5.90	2.28
7,564.0	36.85	138.91	6,852.6	-2,586.1	-1,522.5	-710.2	11.74	8.95	-14.24
7,658.0	40.35	122.18	6,926.3	-2,623.7	-1,478.1	-656.8	11.68	3.72	-17.80
7,690.2	42.12	117.02	6,950.5	-2,634.1	-1,459.6	-636.1	11.89	5.50	-16.00
<b>Sharon Springs</b>									
7,748.6	45.86	108.59	6,992.5	-2,649.7	-1,422.3	-595.9	11.89	6.41	-14.45
<b>Niobrara A</b>									
7,753.0	46.17	108.00	6,995.6	-2,650.7	-1,419.2	-592.7	11.89	6.95	-13.42
7,848.0	51.00	106.27	7,058.4	-2,671.7	-1,351.2	-521.5	5.26	5.08	-1.82
7,942.0	57.33	106.05	7,113.4	-2,692.9	-1,278.0	-445.3	6.74	6.73	-0.23
7,994.7	58.24	105.04	7,141.5	-2,704.8	-1,235.1	-400.8	2.37	1.73	-1.92
<b>Niobrara B</b>									
8,037.0	58.98	104.24	7,163.5	-2,713.9	-1,200.1	-364.7	2.37	1.74	-1.89
8,132.0	65.82	100.32	7,207.5	-2,731.7	-1,117.9	-280.8	8.07	7.20	-4.13

<b>Company:</b>	PDC Energy Inc. DJ Basin	<b>Local Co-ordinate Reference:</b>	Well Bost Farm 38N-8C-L
<b>Project:</b>	SEC.7-T5N-R66W	<b>TVD Reference:</b>	WELL @ 4902ft (Patterson 272 - RKB 28')
<b>Site:</b>	Bost Farms 5-7 Pad SEC.7-T5N-R66W	<b>MD Reference:</b>	WELL @ 4902ft (Patterson 272 - RKB 28')
<b>Well:</b>	Bost Farm 38N-8C-L	<b>North Reference:</b>	True
<b>Wellbore:</b>	Bost Farm 38N-8C-L Wellbore #1	<b>Survey Calculation Method:</b>	Minimum Curvature
<b>Design:</b>	38N-8C-L_Final Surveys	<b>Database:</b>	US_EDM

### Survey

Measured Depth (ft)	Inclination (°)	Azimuth (°)	Vertical Depth (ft)	+N/-S (ft)	+E/-W (ft)	Vertical Section (ft)	Dogleg Rate (°/100usft)	Build Rate (°/100usft)	Turn Rate (°/100usft)
8,219.4	75.43	97.30	7,236.5	-2,744.3	-1,036.5	-199.3	11.47	11.00	-3.46
<b>Niobrara C</b>									
8,226.0	76.16	97.08	7,238.1	-2,745.1	-1,030.2	-193.0	11.47	11.03	-3.27
8,321.0	82.92	94.66	7,255.4	-2,754.6	-937.3	-101.3	7.54	7.12	-2.55
8,366.6	85.14	93.57	7,260.1	-2,757.9	-892.1	-57.1	5.41	4.86	-2.40
<b>LP (81' FSL, 150' FWL)</b>									
8,416.0	87.54	92.39	7,263.3	-2,760.4	-842.8	-9.2	5.41	4.87	-2.38
8,510.0	88.58	88.11	7,266.4	-2,760.8	-748.9	80.8	4.68	1.11	-4.55
8,605.0	88.84	90.18	7,268.6	-2,759.4	-654.0	171.3	2.20	0.27	2.18
8,700.0	88.78	90.18	7,270.6	-2,759.7	-559.0	262.3	0.06	-0.06	0.00
8,889.0	89.13	89.85	7,274.0	-2,759.8	-370.0	443.3	0.25	0.19	-0.17
8,984.0	88.97	89.50	7,275.6	-2,759.2	-275.0	534.0	0.41	-0.17	-0.37
9,079.0	89.26	88.92	7,277.0	-2,757.9	-180.1	624.6	0.68	0.31	-0.61
9,173.0	89.35	88.37	7,278.2	-2,755.7	-86.1	713.9	0.59	0.10	-0.59
9,268.0	89.35	88.43	7,279.3	-2,753.0	8.9	804.0	0.06	0.00	0.06
9,457.0	89.95	88.21	7,280.4	-2,747.5	197.8	983.3	0.34	0.32	-0.12
9,552.0	89.69	87.31	7,280.7	-2,743.8	292.7	1,073.1	0.99	-0.27	-0.95
9,741.0	89.80	91.21	7,281.6	-2,741.3	481.7	1,253.3	2.06	0.06	2.06
9,930.0	90.04	90.36	7,281.8	-2,743.9	670.6	1,434.9	0.47	0.13	-0.45
10,024.0	90.21	90.56	7,281.6	-2,744.7	764.6	1,525.1	0.28	0.18	0.21
10,118.0	90.39	90.07	7,281.1	-2,745.2	858.6	1,615.3	0.56	0.19	-0.52
10,306.0	89.99	90.12	7,280.5	-2,745.5	1,046.6	1,795.3	0.21	-0.21	0.03
10,401.0	90.10	90.98	7,280.4	-2,746.4	1,141.6	1,886.5	0.91	0.12	0.91
10,495.0	90.60	90.64	7,279.8	-2,747.8	1,235.6	1,976.9	0.64	0.53	-0.36
10,683.0	90.31	90.01	7,278.4	-2,748.8	1,423.6	2,157.2	0.37	-0.15	-0.34
10,871.0	90.12	91.77	7,277.6	-2,751.7	1,611.6	2,338.0	0.94	-0.10	0.94
10,966.0	90.33	91.49	7,277.3	-2,754.4	1,706.5	2,429.7	0.37	0.22	-0.29
11,061.0	89.56	90.86	7,277.4	-2,756.4	1,801.5	2,521.2	1.05	-0.81	-0.66
11,155.0	89.71	88.08	7,278.0	-2,755.5	1,895.5	2,610.9	2.96	0.16	-2.96
11,250.0	91.01	89.96	7,277.4	-2,753.9	1,990.5	2,701.3	2.41	1.37	1.98
11,344.0	90.24	88.46	7,276.3	-2,752.6	2,084.5	2,790.9	1.79	-0.82	-1.60
11,439.0	90.72	89.75	7,275.5	-2,751.1	2,179.4	2,881.4	1.45	0.51	1.36
11,533.0	90.16	89.28	7,274.8	-2,750.3	2,273.4	2,971.2	0.78	-0.60	-0.50
11,627.0	90.14	89.15	7,274.6	-2,749.0	2,367.4	3,060.8	0.14	-0.02	-0.14
11,722.0	90.09	87.55	7,274.4	-2,746.3	2,462.4	3,150.9	1.69	-0.05	-1.68
11,816.0	90.25	87.27	7,274.1	-2,742.0	2,556.3	3,239.6	0.34	0.17	-0.30
11,910.0	90.22	89.75	7,273.7	-2,739.6	2,650.2	3,328.8	2.64	-0.03	2.64
12,004.0	90.75	91.02	7,272.9	-2,740.2	2,744.2	3,419.0	1.46	0.56	1.35
12,098.0	90.20	91.08	7,272.2	-2,742.0	2,838.2	3,509.5	0.59	-0.59	0.06
12,192.0	90.89	91.61	7,271.3	-2,744.2	2,932.2	3,600.1	0.93	0.73	0.56
12,287.0	90.24	89.03	7,270.3	-2,744.7	3,027.2	3,691.2	2.80	-0.68	-2.72
12,381.0	90.88	90.32	7,269.4	-2,744.2	3,121.2	3,781.0	1.53	0.68	1.37
12,567.0	90.35	91.32	7,267.4	-2,746.8	3,307.1	3,959.8	0.61	-0.28	0.54
12,662.0	90.47	90.48	7,266.7	-2,748.3	3,402.1	4,051.2	0.89	0.13	-0.88

<b>Company:</b>	PDC Energy Inc. DJ Basin	<b>Local Co-ordinate Reference:</b>	Well Bost Farm 38N-8C-L
<b>Project:</b>	SEC.7-T5N-R66W	<b>TVD Reference:</b>	WELL @ 4902ft (Patterson 272 - RKB 28')
<b>Site:</b>	Bost Farms 5-7 Pad SEC.7-T5N-R66W	<b>MD Reference:</b>	WELL @ 4902ft (Patterson 272 - RKB 28')
<b>Well:</b>	Bost Farm 38N-8C-L	<b>North Reference:</b>	True
<b>Wellbore:</b>	Bost Farm 38N-8C-L Wellbore #1	<b>Survey Calculation Method:</b>	Minimum Curvature
<b>Design:</b>	38N-8C-L_Final Surveys	<b>Database:</b>	US_EDM

Survey									
Measured Depth (ft)	Inclination (°)	Azimuth (°)	Vertical Depth (ft)	+N/-S (ft)	+E/-W (ft)	Vertical Section (ft)	Dogleg Rate (°/100usft)	Build Rate (°/100usft)	Turn Rate (°/100usft)
12,851.0	90.08	91.31	7,265.8	-2,751.3	3,591.1	4,232.9	0.49	-0.21	0.44
12,945.0	89.58	89.75	7,266.1	-2,752.1	3,685.1	4,323.1	1.74	-0.53	-1.66
13,133.0	89.51	89.47	7,267.6	-2,750.9	3,873.1	4,502.7	0.15	-0.04	-0.15
13,227.0	89.27	88.74	7,268.6	-2,749.4	3,967.0	4,592.3	0.82	-0.26	-0.78
13,416.0	89.35	89.10	7,270.9	-2,745.8	4,156.0	4,772.2	0.20	0.04	0.19
13,511.0	89.58	89.66	7,271.8	-2,744.8	4,251.0	4,862.8	0.64	0.24	0.59
13,605.0	89.41	90.34	7,272.6	-2,744.8	4,345.0	4,952.8	0.75	-0.18	0.72
13,699.0	89.79	88.82	7,273.2	-2,744.1	4,439.0	5,042.6	1.67	0.40	-1.62
13,888.0	89.96	89.78	7,273.6	-2,741.8	4,628.0	5,222.8	0.52	0.09	0.51
13,982.0	90.01	89.24	7,273.7	-2,741.0	4,722.0	5,312.6	0.58	0.05	-0.57
14,076.0	89.70	88.74	7,273.9	-2,739.3	4,815.9	5,402.1	0.63	-0.33	-0.53
14,171.0	89.62	89.07	7,274.5	-2,737.5	4,910.9	5,492.5	0.36	-0.08	0.35
14,265.0	89.50	88.13	7,275.2	-2,735.2	5,004.9	5,581.8	1.01	-0.13	-1.00
14,360.0	89.51	89.36	7,276.0	-2,733.1	5,099.9	5,672.1	1.29	0.01	1.29
14,455.0	90.43	88.90	7,276.1	-2,731.7	5,194.9	5,762.6	1.08	0.97	-0.48
14,549.0	90.11	89.39	7,275.6	-2,730.3	5,288.8	5,852.2	0.62	-0.34	0.52
14,643.0	90.29	90.84	7,275.3	-2,730.5	5,382.8	5,942.2	1.55	0.19	1.54
14,738.0	90.37	90.69	7,274.8	-2,731.8	5,477.8	6,033.5	0.18	0.08	-0.16
14,832.0	90.10	90.50	7,274.4	-2,732.7	5,571.8	6,123.8	0.35	-0.29	-0.20
15,020.0	89.98	88.97	7,274.2	-2,731.9	5,759.8	6,303.5	0.82	-0.06	-0.81
15,114.0	89.86	88.30	7,274.4	-2,729.6	5,853.8	6,392.8	0.72	-0.13	-0.71
15,208.0	89.84	88.29	7,274.6	-2,726.8	5,947.7	6,482.0	0.02	-0.02	-0.01
15,302.0	89.79	89.27	7,274.9	-2,724.8	6,041.7	6,571.4	1.04	-0.05	1.04
15,396.0	89.99	88.79	7,275.1	-2,723.2	6,135.7	6,660.9	0.55	0.21	-0.51
15,490.0	89.94	89.73	7,275.2	-2,722.0	6,229.7	6,750.5	1.00	-0.05	1.00
15,584.0	89.99	92.01	7,275.2	-2,723.4	6,323.7	6,840.9	2.43	0.05	2.43
15,679.0	91.18	92.60	7,274.2	-2,727.3	6,418.6	6,932.9	1.40	1.25	0.62
15,773.0	89.91	90.20	7,273.3	-2,729.6	6,512.6	7,023.5	2.89	-1.35	-2.55
15,867.0	90.27	92.90	7,273.2	-2,732.1	6,606.5	7,114.2	2.90	0.38	2.87
15,961.0	90.38	92.44	7,272.7	-2,736.5	6,700.4	7,205.3	0.50	0.12	-0.49
16,055.0	90.11	91.91	7,272.3	-2,740.1	6,794.3	7,296.3	0.63	-0.29	-0.56
16,149.0	90.69	90.75	7,271.6	-2,742.2	6,888.3	7,386.9	1.38	0.62	-1.23
16,243.0	90.31	91.79	7,270.8	-2,744.3	6,982.3	7,477.4	1.18	-0.40	1.11
16,337.0	90.14	91.96	7,270.4	-2,747.4	7,076.2	7,568.3	0.26	-0.18	0.18
16,431.0	90.58	92.21	7,269.8	-2,750.8	7,170.2	7,659.2	0.54	0.47	0.27
16,525.0	90.94	89.13	7,268.6	-2,751.9	7,264.1	7,749.5	3.30	0.38	-3.28
16,619.0	90.04	89.21	7,267.8	-2,750.6	7,358.1	7,839.0	0.96	-0.96	0.09
16,713.0	90.00	88.73	7,267.7	-2,748.9	7,452.1	7,928.5	0.51	-0.04	-0.51
16,807.0	89.72	88.10	7,268.0	-2,746.3	7,546.1	8,017.7	0.73	-0.30	-0.67
16,901.0	90.00	87.89	7,268.2	-2,743.0	7,640.0	8,106.7	0.37	0.30	-0.22
16,996.0	90.04	89.10	7,268.2	-2,740.5	7,735.0	8,196.9	1.27	0.04	1.27
17,184.0	89.98	89.20	7,268.1	-2,737.7	7,923.0	8,376.1	0.06	-0.03	0.05
17,278.0	89.83	90.45	7,268.3	-2,737.4	8,017.0	8,466.0	1.34	-0.16	1.33

<b>Company:</b>	PDC Energy Inc. DJ Basin	<b>Local Co-ordinate Reference:</b>	Well Bost Farm 38N-8C-L
<b>Project:</b>	SEC.7-T5N-R66W	<b>TVD Reference:</b>	WELL @ 4902ft (Patterson 272 - RKB 28')
<b>Site:</b>	Bost Farms 5-7 Pad SEC.7-T5N-R66W	<b>MD Reference:</b>	WELL @ 4902ft (Patterson 272 - RKB 28')
<b>Well:</b>	Bost Farm 38N-8C-L	<b>North Reference:</b>	True
<b>Wellbore:</b>	Bost Farm 38N-8C-L Wellbore #1	<b>Survey Calculation Method:</b>	Minimum Curvature
<b>Design:</b>	38N-8C-L_Final Surveys	<b>Database:</b>	US_EDM

Survey										
Measured Depth (ft)	Inclination (°)	Azimuth (°)	Vertical Depth (ft)	+N/-S (ft)	+E/-W (ft)	Vertical Section (ft)	Dogleg Rate (°/100usft)	Build Rate (°/100usft)	Turn Rate (°/100usft)	
17,372.0	89.70	90.16	7,268.7	-2,737.9	8,111.0	8,556.1	0.34	-0.14	-0.31	
17,467.0	89.77	89.34	7,269.1	-2,737.5	8,206.0	8,646.9	0.87	0.07	-0.86	
17,561.0	89.99	90.56	7,269.3	-2,737.4	8,300.0	8,736.9	1.32	0.23	1.30	
17,655.0	89.92	90.11	7,269.4	-2,738.0	8,393.9	8,827.0	0.48	-0.07	-0.48	
17,749.0	89.80	90.06	7,269.6	-2,738.1	8,487.9	8,917.1	0.14	-0.13	-0.05	
17,938.0	89.74	90.49	7,270.4	-2,739.0	8,676.9	9,098.3	0.23	-0.03	0.23	
18,032.0	90.06	89.01	7,270.5	-2,738.6	8,770.9	9,188.1	1.61	0.34	-1.57	
18,127.0	89.97	89.59	7,270.5	-2,737.4	8,865.9	9,278.7	0.62	-0.09	0.61	
18,305.0	90.14	90.75	7,270.3	-2,738.0	9,043.9	9,449.3	0.66	0.10	0.65	
18,333.0	90.14	90.75	7,270.3	-2,738.3	9,071.9	9,476.2	0.00	0.00	0.00	
BHL (94' FSL, 465' FEL)										

Formations						
Measured Depth (ft)	Vertical Depth (ft)	Name	Lithology	Dip (°)	Dip Direction (°)	
794.7	787.5	Fox Hills Aq Base				
4,076.1	3,741.5	Parkman				
4,690.9	4,288.5	Sussex				
5,413.1	4,932.5	Shannon				
7,690.2	6,950.5	Sharon Springs				
7,748.6	6,992.5	Niobrara A				
7,994.7	7,141.5	Niobrara B				
8,219.4	7,236.5	Niobrara C				

Survey Annotations					
Measured Depth (ft)	Vertical Depth (ft)	Local Coordinates			
		+N/-S (ft)	+E/-W (ft)	Comment	
8,366.6	7,260.1	-2,757.9	-892.1	LP (81' FSL, 150' FWL)	
18,333.0	7,270.3	-2,738.3	9,071.9	BHL (94' FSL, 465' FEL)	