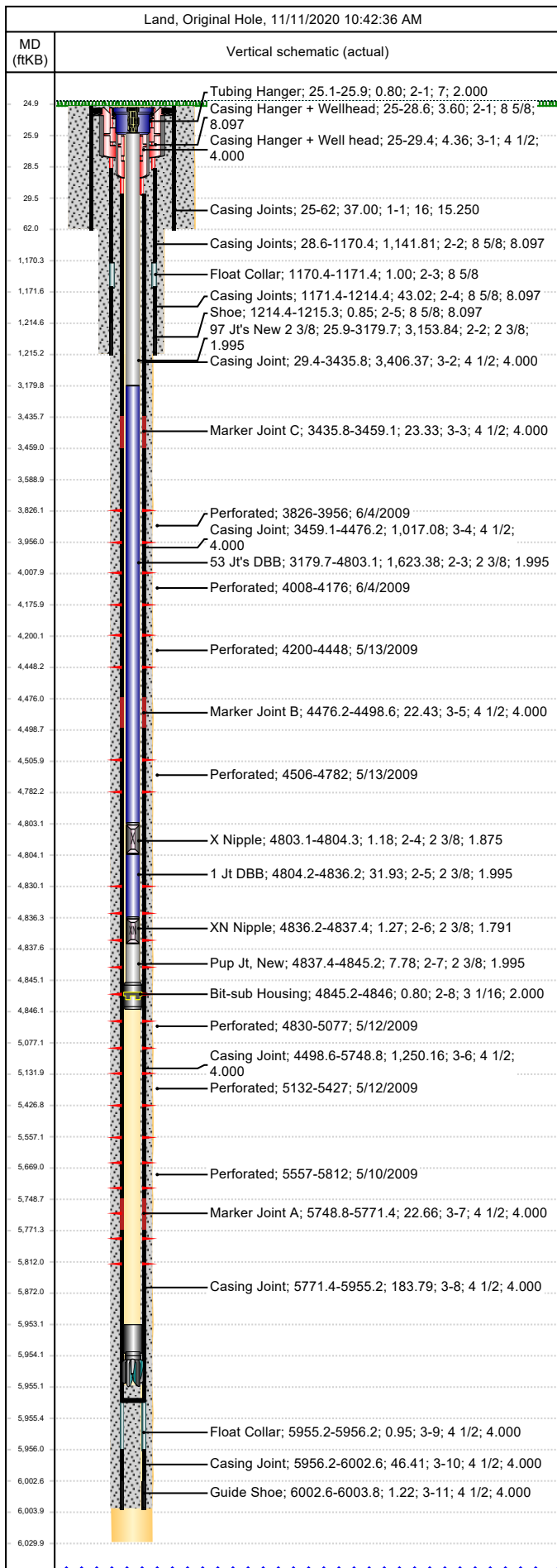




# Wellbore Schematic

Well Name SKR-598-26-AV-19	Lease Chevron USA	Field Name Skinner Ridge	Business Unit Mid-Continent
-------------------------------	----------------------	-----------------------------	--------------------------------



Job Details						
Job Category			Start Date		Rig/Unit End Date	
Casing Strings						
Csg Des	OD (in)	Wt/Len (lb/ft)	Grade	Top Thread	Set Depth (MD) (ftKB)	
Conductor	16				62	
Surface	8 5/8	24.00	K-55		1215.3	
Production Casing	4 1/2	11.60	N-80		6003.8	
Tubing Strings						
Tubing - Production set at 4,846.0ftKB on 6/19/2015 08:00						
Tubing Description			Run Date	String Length (ft)	Set Depth (MD) (ftKB)	
Tubing - Production			6/19/2015	4,820.98	4,846.0	
Item Des	Jts	OD (in)	Wt (lb/ft)	Grade	Len (ft)	Btm (ftKB)
Tubing Hanger	1	7			0.80	25.8
97 Jt's New 2 3/8	97	2 3/8	4.70	L-80	3,153.84	3,179.7
53 Jt's DBB	53	2 3/8	4.70	L-80	1,623.38	4,803.1
X Nipple	1	2 3/8			1.18	4,804.2
1 Jt DBB	1	2 3/8	4.70	L-80	31.93	4,836.2
XN Nipple	1	2 3/8			1.27	4,837.4
Pup Jt, New	1	2 3/8	4.70	L-80	7.78	4,845.2
Bit-sub Housing	1	3 1/16			0.80	4,846.0
Perforations						
Date	Top (ftKB)	Btm (ftKB)	Shot Dens (shots/ft)	Entered Shot Total	Linked Zone	
6/4/2009	3,826.0	3,956.0	3.0	27	Mesa Verde - WMFK - Williams Fork, Original Hole	
6/4/2009	4,008.0	4,176.0	3.0	24	Mesa Verde - WMFK - Williams Fork, Original Hole	
5/13/2009	4,200.0	4,448.0	3.0	30	Mesa Verde - WMFK - Williams Fork, Original Hole	
5/13/2009	4,506.0	4,782.0	3.0	30	Mesa Verde - WMFK - Williams Fork, Original Hole	
5/12/2009	4,830.0	5,077.0	3.0	30	Mesa Verde - WMFK - Williams Fork, Original Hole	
5/12/2009	5,132.0	5,427.0	3.0	24	Mesa Verde - WMFK - Williams Fork, Original Hole	
5/10/2009	5,557.0	5,812.0	3.0	27	Mesa Verde - WMFK - Williams Fork, Original Hole	
Other Strings						
Run Date	Pull Date	Set Depth (ftKB)	Com			
Other In Hole						
Des	Top (ftKB)	Btm (ftKB)	Run Date	Pull Date	Com	
Bear Claw Solid CBP	3,760.0	3,761.0	6/4/2009	9/16/2009	Solid composite plug.	
Bear Claw Frac Plug	3,982.0	3,983.0	6/4/2009	9/16/2009	Bio Ball composite, flow thru, frac, bridge plug	
Bear Claw Solid CBP	4,169.0	4,171.0	5/25/2009	6/1/2009	Solid composite plug.	
Bear Claw Frac Plug	4,190.0	4,191.0	6/4/2009	9/16/2009	Bio Ball composite, flow thru, frac, bridge plug	
Bear Claw Frac Plug	4,463.0	4,465.0	5/13/2009	6/1/2009	Bio Ball composite, flow thru, frac, bridge plug	
Bear Claw Frac Plug	4,805.0	4,807.0	5/13/2009	9/16/2009	Bio Ball composite, flow thru, frac, bridge plug	
Bear Claw Frac Plug	5,109.0	5,111.0	5/12/2009	9/17/2009	Bio Ball composite, flow thru, frac, bridge plug	
Bear Claw Frac Plug	5,490.0	5,492.0	5/12/2009	9/17/2009	Bio Ball composite, flow thru, frac, bridge plug	
Fill tag, 6/17/2015	5,750.0	5,777.0	6/17/2015	6/18/2015	Tag w/ tbg, 6/17/2015	
Fill, 2/26/2010	5,777.0	5,953.0	2/26/2010	6/18/2015	Tag w/ slick-line, 2/26/10	
Pumped off	5,953.0	5,954.0	9/17/2009			
Mill	5,954.0	5,955.0	9/17/2009			