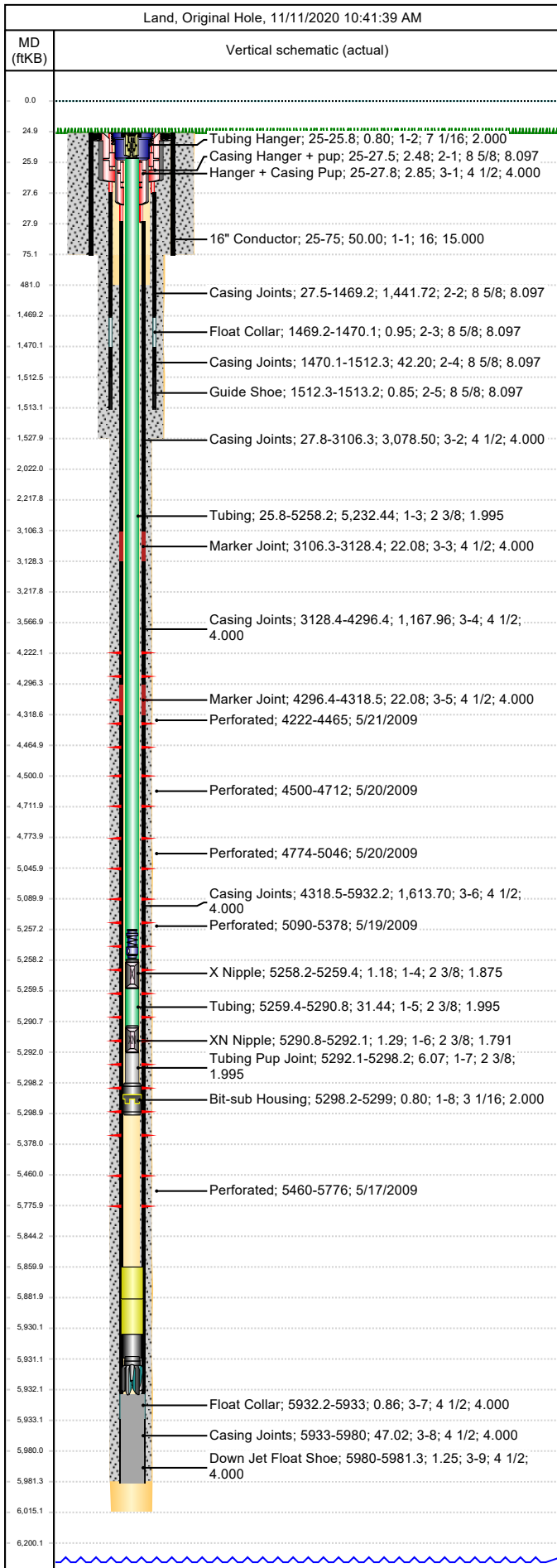




# Wellbore Schematic

Well Name SKR-598-26-AV-16	Lease Chevron USA	Field Name Skinner Ridge	Business Unit Mid-Continent
-------------------------------	----------------------	-----------------------------	--------------------------------



Job Details								
Job Category				Start Date		Rig/Unit End Date		
Casing Strings								
Csg Des	OD (in)	Wt/Len (lb/ft)	Grade	Top Thread	Set Depth (MD) (ftKB)			
Conductor	16				75			
Surface	8 5/8	24.00	K-55		1513.2			
Production Casing	4 1/2	11.60	N-80		5981.3			
Tubing Strings								
Tubing - Production set at 5,299.0ftKB on 8/13/2009 11:00								
Tubing Description			Run Date		String Length (ft)		Set Depth (MD) (ftKB)	
Tubing - Production			8/13/2009		5,299.02		5,299.0	
Item Des		Jts	OD (in)	Wt (lb/ft)	Grade	Len (ft)		Btm (ftKB)
KBGL						25.00		25.0
Tubing Hanger			7 1/16			0.80		25.8
Tubing		168	2 3/8	4.70	L-80	5,232.44		5,258.2
X Nipple			2 3/8			1.18		5,259.4
Tubing		1	2 3/8	4.70	L-80	31.44		5,290.8
XN Nipple			2 3/8			1.29		5,292.1
Tubing Pup Joint			2 3/8			6.07		5,298.2
Bit-sub Housing			3 1/16			0.80		5,299.0
Tubing Landed @								5,299.0
Perforations								
Date	Top (ftKB)	Btm (ftKB)	Shot Dens (shots/ft)	Entered Shot Total	Linked Zone			
5/21/2009	4,222.0	4,465.0	3.0	30	Mesa Verde - WMFK - Williams Fork, Original Hole			
5/20/2009	4,500.0	4,712.0	3.0	30	Mesa Verde - WMFK - Williams Fork, Original Hole			
5/20/2009	4,774.0	5,046.0	3.0	30	Mesa Verde - WMFK - Williams Fork, Original Hole			
5/19/2009	5,090.0	5,378.0	3.0	24	Mesa Verde - WMFK - Williams Fork, Original Hole			
5/17/2009	5,460.0	5,776.0	3.0	30	Mesa Verde - WMFK - Williams Fork, Original Hole			
Other Strings								
Run Date	Pull Date	Set Depth (ftKB)		Com				
Other In Hole								
Des	Top (ftKB)	Btm (ftKB)	Run Date	Pull Date	Com			
Bear Claw Solid Plug	4,180.0	4,181.0	6/11/2009	8/12/2009	Solid bridge plug			
Bear Claw Frac Plug	4,480.0	4,482.0	5/21/2009	8/12/2009	Bio Ball composite, flow thru, frac, bridge plug			
Bear Claw Frac Plug	4,749.0	4,751.0	5/20/2009	8/12/2009	Bio Ball composite, flow thru, frac, bridge plug			
Bear Claw Frac Plug	5,077.0	5,079.0	5/20/2009	8/12/2009	Bio Ball composite, flow thru, frac, bridge plug			
Tubing Plunger	5,256.1	5,257.1	3/18/2010	6/14/2011	Production does not know who or when plunger was caught.			
Bumper Spring	5,257.1	5,258.1	3/18/2010	8/17/2011	08-17-11 Slickline pulled bumper spring.			
Bumper Spring	5,257.1	5,258.1	9/26/2013		08-17-11 Slickline pulled bumper spring.			
Bear Claw Frac Plug	5,418.0	5,420.0	5/19/2009	8/12/2009	Bio Ball composite, flow thru, frac, bridge plug			
Fill Tag, 6/14/2013	5,860.0	5,882.0	6/14/2013					
Fill, 3/18/2010	5,882.0	5,930.2	3/18/2010					
Pumped off	5,930.2	5,931.0	8/12/2009					
Mill	5,931.0	5,932.2	8/12/2009					
PBTD	5,932.2	5,981.3	8/12/2009					