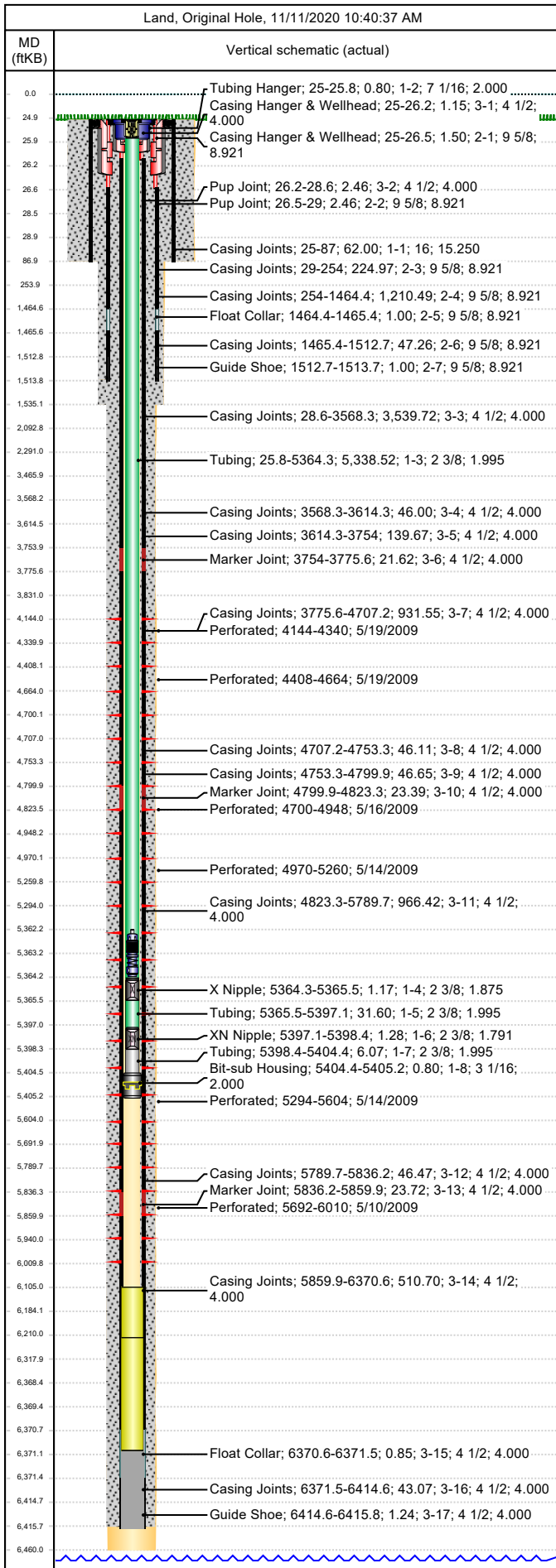




Wellbore Schematic

| | | | |
|-------------------------------|----------------------|-----------------------------|--------------------------------|
| Well Name SKR-598-26-AV-11 | Lease Chevron USA | Field Name Skinner Ridge | Business Unit Mid-Continent |
|-------------------------------|----------------------|-----------------------------|--------------------------------|



| Job Details | | | | | | | | |
|---|------------|------------------|----------------------|--------------------|--|-----------------------|-----------------------|------------|
| Job Category | | | | Start Date | | Rig/Unit End Date | | |
| Well Services | | | | 10/23/2013 | | 10/23/2013 | | |
| Casing Strings | | | | | | | | |
| Csg Des | OD (in) | Wt/Len (lb/ft) | Grade | | Top Thread | Set Depth (MD) (ftKB) | | |
| Conductor | 16 | | | | | 87 | | |
| Surface | 9 5/8 | 36.00 | K-55 | | | 1513.7 | | |
| Production Casing | 4 1/2 | 11.60 | N-80 | | | 6415.8 | | |
| Tubing Strings | | | | | | | | |
| Tubing - Production set at 5,405.2ftKB on 8/29/2009 12:00 | | | | | | | | |
| Tubing Description | | | Run Date | | String Length (ft) | | Set Depth (MD) (ftKB) | |
| Tubing - Production | | | 8/29/2009 | | 5,405.24 | | 5,405.2 | |
| Item Des | | Jts | OD (in) | Wt (lb/ft) | Grade | Len (ft) | | Btm (ftKB) |
| KBGL | | | | | | 25.00 | | 25.0 |
| Tubing Hanger | | | 7 1/16 | | | 0.80 | | 25.8 |
| Tubing | | 168 | 2 3/8 | 4.70 | L-80 | 5,338.52 | | 5,364.3 |
| X Nipple | | | 2 3/8 | | | 1.17 | | 5,365.5 |
| Tubing | | 1 | 2 3/8 | 4.70 | L-80 | 31.60 | | 5,397.1 |
| XN Nipple | | | 2 3/8 | | | 1.28 | | 5,398.4 |
| Tubing | | | 2 3/8 | 4.70 | L-80 | 6.07 | | 5,404.4 |
| Bit-sub Housing | | | 3 1/16 | | | 0.80 | | 5,405.2 |
| Tubing Landed @ | | | | | | 0.00 | | 5,405.2 |
| Perforations | | | | | | | | |
| Date | Top (ftKB) | Btm (ftKB) | Shot Dens (shots/ft) | Entered Shot Total | Linked Zone | | | |
| 5/19/2009 | 4,144.0 | 4,340.0 | 3.0 | 27 | Mesa Verde - WMFK - Williams Fork, Original Hole | | | |
| 5/19/2009 | 4,408.0 | 4,664.0 | 3.0 | 30 | Mesa Verde - WMFK - Williams Fork, Original Hole | | | |
| 5/16/2009 | 4,700.0 | 4,948.0 | 3.0 | 27 | Mesa Verde - WMFK - Williams Fork, Original Hole | | | |
| 5/14/2009 | 4,970.0 | 5,260.0 | 3.0 | 30 | Mesa Verde - WMFK - Williams Fork, Original Hole | | | |
| 5/14/2009 | 5,294.0 | 5,604.0 | 3.0 | 30 | Mesa Verde - WMFK - Williams Fork, Original Hole | | | |
| 5/10/2009 | 5,692.0 | 6,010.0 | 3.0 | 30 | Mesa Verde - WMFK - Williams Fork, Original Hole | | | |
| Other Strings | | | | | | | | |
| Run Date | Pull Date | Set Depth (ftKB) | | Com | | | | |
| | | | | | | | | |
| Other In Hole | | | | | | | | |
| Des | Top (ftKB) | Btm (ftKB) | Run Date | Pull Date | Com | | | |
| Bear Claw Solid Plug | 4,075.0 | 4,076.0 | 6/11/2009 | 8/28/2009 | Solid bridge plug | | | |
| Bear Claw Frac Plug | 4,369.0 | 4,371.0 | 5/19/2009 | 8/28/2009 | Bio Ball composite, flow thru, frac, bridge plug | | | |
| Bear Claw Frac Plug | 4,681.0 | 4,683.0 | 5/19/2009 | 8/28/2009 | Bio Ball composite, flow thru, frac, bridge plug | | | |
| Bear Claw Frac Plug | 4,953.0 | 4,955.0 | 5/16/2009 | 8/28/2009 | Bio Ball composite, flow thru, frac, bridge plug | | | |
| Bear Claw Frac Plug | 5,272.0 | 5,274.0 | 5/14/2009 | 8/28/2009 | Bio Ball composite, flow thru, frac, bridge plug | | | |
| Tubing Plunger | 5,362.1 | 5,363.1 | 10/23/2013 | | Re-install after tag | | | |
| Bumper Spring | 5,363.1 | 5,364.1 | 10/23/2013 | | Re-install after tag | | | |
| Bear Claw Frac Plug | 5,638.0 | 5,640.0 | 5/14/2009 | 8/28/2009 | Solid Bridge Plug | | | |
| Fill (Sand / Mud / Debris) | 6,065.0 | | 7/18/2019 | | | | | |
| Fill, 10/23/2013 | 6,105.0 | 6,210.0 | 10/23/2013 | | | | | |
| Fill, 2/25/2010 | 6,210.0 | 6,371.0 | 2/25/2010 | | Tag fill w/ slick-line, 2/25/10 | | | |
| Pumped off | 6,368.6 | 6,369.4 | 8/29/2009 | | | | | |
| Mill | 6,369.4 | 6,370.6 | 8/29/2009 | | | | | |
| PBTD | 6,370.6 | 6,415.8 | 8/29/2009 | | | | | |