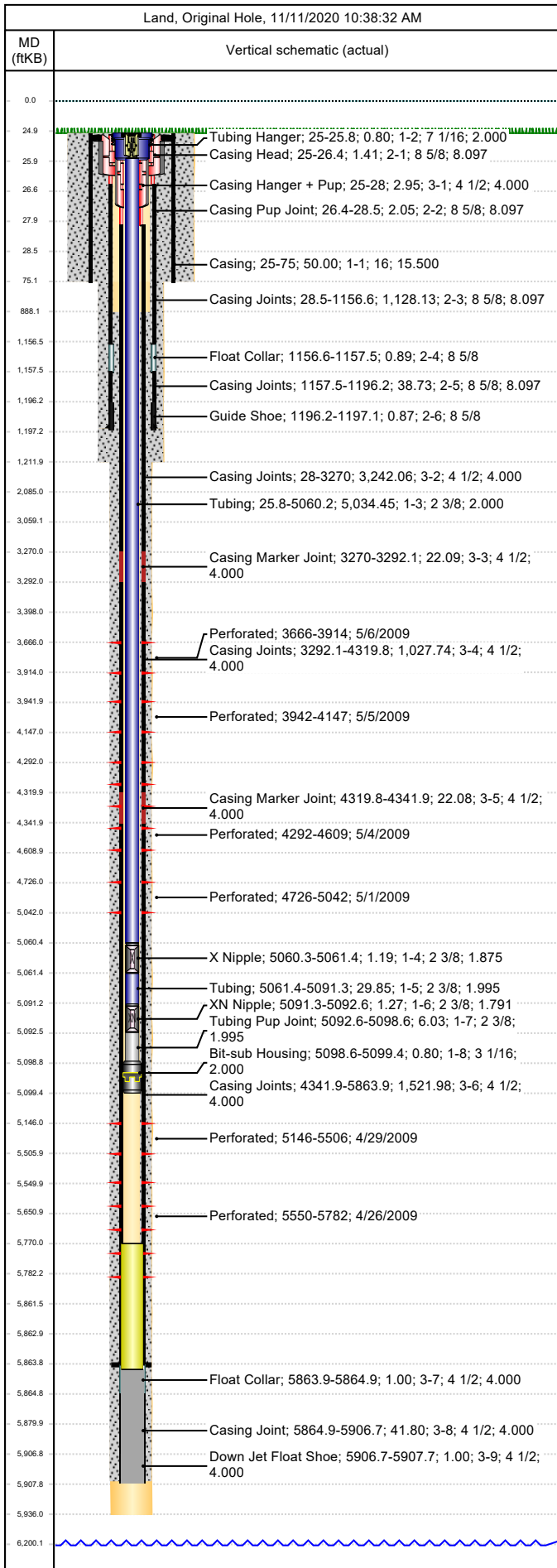




Wellbore Schematic

Well Name SKR-598-26-AV-06	Lease Chevron USA	Field Name Skinner Ridge	Business Unit Mid-Continent
-------------------------------	----------------------	-----------------------------	--------------------------------



Job Details						
Job Category			Start Date		Rig/Unit End Date	
Well Services			3/8/2013		3/8/2013	
Casing Strings						
Csg Des	OD (in)	Wt/Len (lb/ft)	Grade	Top Thread	Set Depth (MD) (ftKB)	
Conductor	16				75	
Surface	8 5/8	24.00	K-55	ST&C	1197.1	
Production Casing	4 1/2	11.60	N-80		5907.7	
Tubing Strings						
Tubing - Production set at 5,099.4ftKB on 7/28/2009 00:00						
Tubing Description			Run Date	String Length (ft)	Set Depth (MD) (ftKB)	
Tubing - Production			7/28/2009	5,099.39	5,099.4	
Item Des	Jts	OD (in)	Wt (lb/ft)	Grade	Len (ft)	Btm (ftKB)
KBGL		0.0	0.00	0	25.00	25.0
Tubing Hanger		7 1/16			0.80	25.8
Tubing	169	2 3/8	4.70	L-80	5,034.45	5,060.2
X Nipple		2 3/8			1.19	5,061.4
Tubing	1	2 3/8	4.70	L-80	29.85	5,091.3
XN Nipple		2 3/8			1.27	5,092.6
Tubing Pup Joint		2 3/8	4.70	L-80	6.03	5,098.6
Bit-sub Housing		3 1/16			0.80	5,099.4
Tubing Landed @						5,099.4
Perforations						
Date	Top (ftKB)	Btm (ftKB)	Shot Dens (shots/ft)	Entered Shot Total	Linked Zone	
5/6/2009	3,666.0	3,914.0	3.0	30	Mesa Verde - WMFK - Williams Fork, Original Hole	
5/5/2009	3,942.0	4,147.0	3.0	27	Mesa Verde - WMFK - Williams Fork, Original Hole	
5/4/2009	4,292.0	4,609.0	3.0	27	Mesa Verde - WMFK - Williams Fork, Original Hole	
5/1/2009	4,726.0	5,042.0	3.0	30	Mesa Verde - WMFK - Williams Fork, Original Hole	
4/29/2009	5,146.0	5,506.0	3.0	27	Mesa Verde - WMFK - Williams Fork, Original Hole	
4/26/2009	5,550.0	5,782.0	3.0	27	Mesa Verde - WMFK - Williams Fork, Original Hole	
Other Strings						
Run Date	Pull Date	Set Depth (ftKB)	Com			
Other In Hole						
Des	Top (ftKB)	Btm (ftKB)	Run Date	Pull Date	Com	
Bear Claw Solid CBP	3,470.0	3,472.0	5/30/2009	7/23/2009	Top Composite BP	
Bear Claw Solid CBP	3,554.0	3,556.0	5/22/2009	7/28/2009	Bio Ball composite, flow thru, frac, bridge plug	
Bear Claw Frac Plug	3,636.0	3,638.0	5/25/2009	7/23/2009	Solid composite plug.	
Bear Claw Frac Plug	3,925.0	3,927.0	5/5/2009	7/23/2009	Bio Ball composite, flow thru, frac, bridge plug	
Bear Claw Frac Plug	4,198.0	4,200.0	5/5/2009	7/23/2009	Bio Ball composite, flow thru, frac, bridge plug	
Bear Claw Frac Plug	4,648.0	4,650.0	5/4/2009	7/24/2009	Bio Ball composite, flow thru, frac, bridge plug	
Bear Claw Frac Plug	5,099.0	5,101.0	5/1/2009	7/24/2009	Bio Ball composite, flow thru, frac, bridge plug	
Bear Claw Frac Plug	5,527.0	5,529.0	4/29/2009	7/24/2009	Bio Ball composite, flow thru, frac, bridge plug	
Fill (Sand / Mud / Debris)	5,749.0		7/18/2019			
Fill, 3/8/2013	5,770.0	5,864.0	3/8/2013			
Pumped off	5,861.6	5,862.8	7/23/2009			
Mill	5,862.8	5,864.0	7/23/2009			
PBTD	5,864.0	5,907.7	7/23/2009			