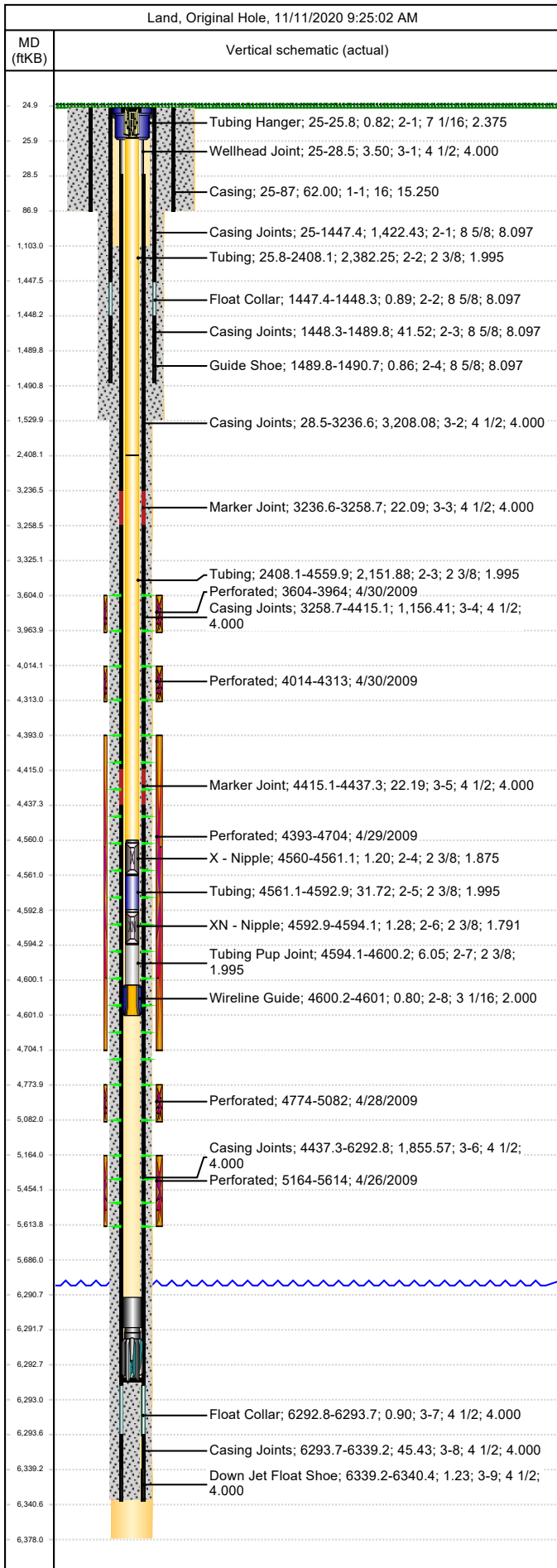




Wellbore Schematic

Well Name SKR-598-26-AV-02	Lease Chevron USA	Field Name Skinner Ridge	Business Unit Mid-Continent
-------------------------------	----------------------	-----------------------------	--------------------------------



Job Details						
Job Category			Start Date		Rig/Unit End Date	
Major Rig Work Over (MRWO)			6/22/2016		6/24/2016	
Major Rig Work Over (MRWO)			7/13/2016		7/14/2016	
Major Rig Work Over (MRWO)			7/14/2016		7/15/2016	
Casing Strings						
Csg Des	OD (in)	Wt/Len (lb/ft)	Grade	Top Thread	Set Depth (MD) (ftKB)	
Conductor	16				87	
Surface	8 5/8	24.00	K-55		1490.7	
Production Casing	4 1/2	11.60	N-80		6340.4	
Tubing Strings						
Tubing - Production set at 4,601.0ftKB on 6/23/2016 17:30						
Tubing Description			Run Date	String Length (ft)	Set Depth (MD) (ftKB)	
Tubing - Production			6/23/2016	4,576.00	4,601.0	
Item Des	Jts	OD (in)	Wt (lb/ft)	Grade	Len (ft)	Btm (ftKB)
Tubing Hanger	1	7 1/16			0.82	25.8
Tubing	76	2 3/8	4.70	L-80	2,382.25	2,408.1
Tubing	69	2 3/8	4.70	L-80	2,151.88	4,560.0
X - Nipple	1	2 3/8			1.20	4,561.2
Tubing	1	2 3/8	4.70	L-80	31.72	4,592.9
XN - Nipple	1	2 3/8			1.28	4,594.2
Tubing Pup Joint	1	2 3/8	4.70	L-80	6.05	4,600.2
Wireline Guide	1	3 1/16			0.80	4,601.0
Perforations						
Date	Top (ftKB)	Btm (ftKB)	Shot Dens (shots/ft)	Entered Shot Total	Linked Zone	
4/30/2009	3,604.0	3,964.0	3.0	30	Mesa Verde - WMFK - Williams Fork, Original Hole	
4/30/2009	4,014.0	4,313.0	3.0	24	Mesa Verde - WMFK - Williams Fork, Original Hole	
4/29/2009	4,393.0	4,704.0	3.0	27	Mesa Verde - WMFK - Williams Fork, Original Hole	
4/28/2009	4,774.0	5,082.0	3.0	30	Mesa Verde - WMFK - Williams Fork, Original Hole	
4/26/2009	5,164.0	5,614.0	3.0	30	Mesa Verde - WMFK - Cameo Coal, Original Hole	
Other Strings						
Run Date	Pull Date	Set Depth (ftKB)	Com			
Other In Hole						
Des	Top (ftKB)	Btm (ftKB)	Run Date	Pull Date	Com	
Bear Claw Frac Plug	3,559.0	3,561.0	5/22/2009	7/14/2009	Solid composite plug.	
Bear Claw Frac Plug	3,988.0	3,990.0	4/30/2009	7/14/2009	Bio Ball composite, flow thru, frac, bridge plug	
Bear Claw Frac Plug	4,352.0	4,354.0	4/30/2009	7/15/2009	Bio Ball composite, flow thru, frac, bridge plug	
Bear Claw Frac Plug	4,729.0	4,731.0	4/29/2009	7/15/2009	Bio Ball composite, flow thru, frac, bridge plug	
Fill in Tbg, 6/14/2013	4,735.0	4,769.1	6/14/2013	6/22/2016	Note: Tbg bled down to line pack	
Tubing Plunger	4,769.1	4,770.3	3/8/2013	6/22/2016	Plunger, dropped by Operations	
Bumper Spring	4,770.3	4,771.5	3/8/2013	6/22/2016	Bumper Spring, dropped by Operations	
Bear Claw Frac Plug	5,109.0	5,111.0	4/28/2009	7/15/2009	Bio Ball composite, flow thru, frac, bridge plug	
Fill, 3/8/2013	5,985.0	6,154.0	3/8/2013	6/23/2016		
Fill, 5/4/2010	6,154.0	6,163.0	5/4/2010	6/23/2016	Tag w/ slick-line, 3/18/10	
Fill, 3/18/2010	6,163.0	6,291.0	3/18/2010	6/23/2016	Tag w/ slick-line, 3/18/10	
Pumped off	6,290.8	6,291.6	7/16/2009			
Mill	6,291.6	6,292.8	7/16/2009			