

# Magpie Operating, Inc.

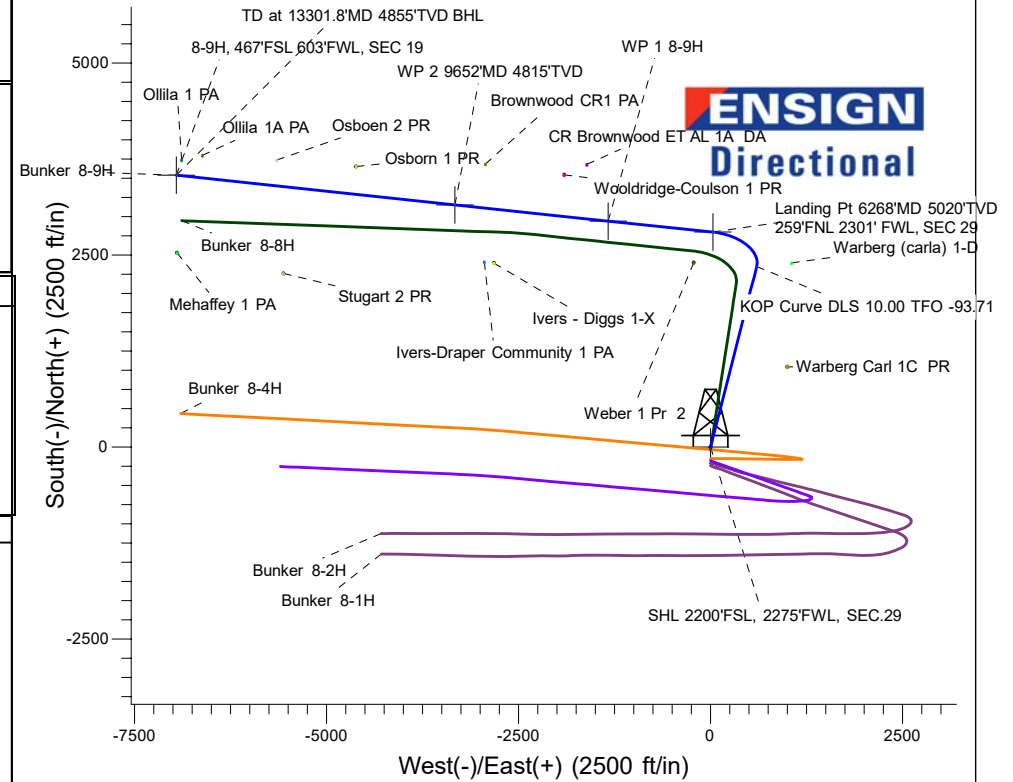
Well Name: Bunker 8-9H  
 Surface Location: Bunker 8 Well Pad Sec.29-T5N-R68W  
 North American Datum 1983, US State Plane 1983, Colorado Northern Zone  
 Ground Elevation: 4997.0  
 +N/-S +E/-W Northing Easting Latitude Longitude Slot  
 0.0 0.0 1377935.54 3130398.61 40.369890 -105.032005  
 KB 17' Akita RKB @ 5014.0ft (KB 17' Akita)

## WELLBORE TARGET DETAILS

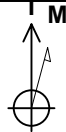
Name	TVD	+N/-S	+E/-W	Longitude	Latitude
SHL 2200'FSL, 2275'FWL, SEC.29	0.0	0.0	0.0	-105.032005	40.369890
WP 2 8-9H	4815.0	3151.6	-3327.4	-105.043948	40.378540
BHL 8-9H, 467'FSL 603'FWL, SEC 19	4855.0	3540.8	-6955.4	-105.056970	40.379606
WP 1 8-9H	4890.0	2941.1	-1333.5	-105.036792	40.377963
LP 8-9H, 259'FNL 2301'FWL, SEC 29	5020.0	2798.9	30.8	-105.031895	40.377573

## ANNOTATIONS

MD	Inc	Azi	TVD	+N/-S	+E/-W	VSec	Departure	Annotation
600.0	0.00	0.00	600.0	0.0	0.0	0.0	0.0	KOP 600'MD Build 3.50
1612.1	35.42	14.35	1548.8	293.6	75.1	66.2	303.0	Start 3663.6 hold at 1612.1 MD
5275.7	35.42	14.35	4534.3	2350.8	601.4	530.5	2426.5	KOP Curve DLS 10.00 TFO -93.71
6268.4	95.41	275.95	5020.0	2798.9	30.8	1242.3	3231.3	Landing Pt 6268'MD 5020'TVD
7646.2	95.41	275.95	4890.0	2941.1	-1333.5	2522.6	4602.9	WP 1 7646'MD 4890'TVD
7817.2	92.00	276.03	4879.0	2958.9	-1503.1	2681.9	4773.5	Start 1835.6 hold at 7817.2 MD
9652.7	92.00	276.03	4815.0	3151.6	-3327.4	4395.1	6607.9	WP 2 9652'MD 4815'TVD
9786.5	89.32	276.12	4813.5	3165.8	-3460.4	4520.0	6741.7	Start 3515.3 hold at 9786.5 MD
13301.8	89.32	276.12	4855.0	3540.8	-6955.4	7804.8	10256.7	TD at 13301.8'MD 4855'TVD



Bunker 8 Well Pad Sec.29-T5N-R68W  
 Bunker 8-9H  
 Plan #3 (5-19-22)  
 8:22, May 27 2022

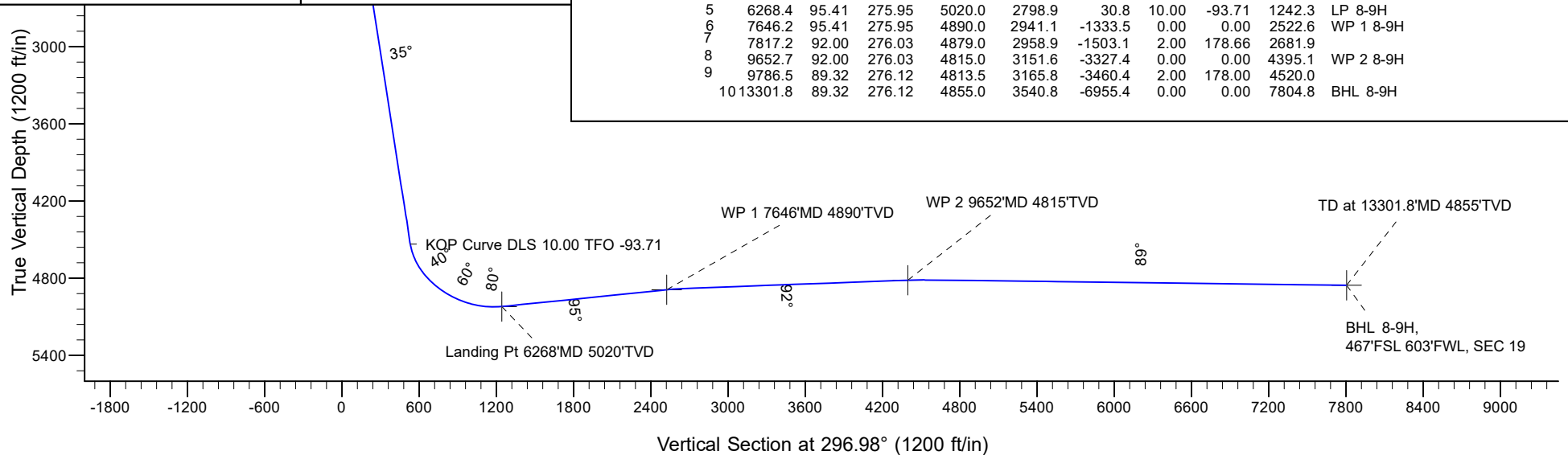


Azimuths to True North  
 Magnetic North: 8.03°

Magnetic Field  
 Strength: 51835.8nT  
 Dip Angle: 66.51°  
 Date: 05/23/2022  
 Model: HRGM

## SECTION DETAILS

Sec	MD	Inc	Azi	TVD	+N/-S	+E/-W	Dleg	TFace	VSec	Target
1	0.0	0.00	0.00	0.0	0.0	0.0	0.00	0.00	0.0	
2	600.0	0.00	0.00	600.0	0.0	0.0	0.00	0.00	0.0	
3	1612.1	35.42	14.35	1548.8	293.6	75.1	3.50	14.35	66.2	
4	5275.7	35.42	14.35	4534.3	2350.8	601.4	0.00	0.00	530.5	
5	6268.4	95.41	275.95	5020.0	2798.9	30.8	10.00	-93.71	1242.3	LP 8-9H
6	7646.2	95.41	275.95	4890.0	2941.1	-1333.5	0.00	0.00	2522.6	WP 1 8-9H
7	7817.2	92.00	276.03	4879.0	2958.9	-1503.1	2.00	178.66	2681.9	
8	9652.7	92.00	276.03	4815.0	3151.6	-3327.4	0.00	0.00	4395.1	WP 2 8-9H
9	9786.5	89.32	276.12	4813.5	3165.8	-3460.4	2.00	178.00	4520.0	
10	13301.8	89.32	276.12	4855.0	3540.8	-6955.4	0.00	0.00	7804.8	BHL 8-9H





## **Magpie Operating, Inc.**

**SEC.29-T5N-R68W**

**Bunker 8 Well Pad Sec.29-T5N-R68W**

**Bunker 8-9H**

**Wellbore #1**

**Plan: Plan #3 (5-19-22)**

## **Standard Planning Report**

**27 May, 2022**

<b>Database:</b>	US_EDM	<b>Local Co-ordinate Reference:</b>	Well Bunker 8-9H
<b>Company:</b>	Magpie Operating, Inc.	<b>TVD Reference:</b>	RKB @ 5014.0ft (KB 17' Akita)
<b>Project:</b>	SEC.29-T5N-R68W	<b>MD Reference:</b>	RKB @ 5014.0ft (KB 17' Akita)
<b>Site:</b>	Bunker 8 Well Pad Sec.29-T5N-R68W	<b>North Reference:</b>	True
<b>Well:</b>	Bunker 8-9H	<b>Survey Calculation Method:</b>	Minimum Curvature
<b>Wellbore:</b>	Wellbore #1		
<b>Design:</b>	Plan #3 (5-19-22)		

<b>Project</b>	SEC.29-T5N-R68W, Laramier County, CO		
<b>Map System:</b>	US State Plane 1983	<b>System Datum:</b>	Mean Sea Level
<b>Geo Datum:</b>	North American Datum 1983		Using Well Reference Point
<b>Map Zone:</b>	Colorado Northern Zone		Using geodetic scale factor

Site		Bunker 8 Well Pad Sec.29-T5N-R68W			
Site Position:		Northing:	1,377,695.11 usft	Latitude:	40.369230
From:	Lat/Long	Easting:	3,130,398.62 usft	Longitude:	-105.032010
Position Uncertainty:	0.0 ft	Slot Radius:	13-3/16 "	Grid Convergence:	0.30 °

Well	Bunker 8-9H					
Well Position	+N/-S	240.4 ft	Northing:	1,377,935.54 usft	Latitude:	40.369890
	+E/-W	1.3 ft	Easting:	3,130,398.61 usft	Longitude:	-105.032006
Position Uncertainty		0.0 ft	Wellhead Elevation:	0.0 ft	Ground Level:	4,997.0 ft

<b>Wellbore</b>	Wellbore #1				
Magnetics	Model Name	Sample Date	Declination (°)	Dip Angle (°)	Field Strength (nT)
	HDGM_FILE	12/07/2018	8.45	66.63	52,137.80000000
	HDGM	02/04/2021	8.23	66.55	51,909.90000000
	HRGM	05/23/2022	8.03	66.51	51,835.77280071

<b>Design</b>	Plan #3 (5-19-22)			
<b>Audit Notes:</b>				
<b>Version:</b>	<b>Phase:</b>	PLAN	<b>Tie On Depth:</b>	0.0
Vertical Section:	Depth From (TVD) (ft)	+N/-S (ft)	+E/-W (ft)	Direction (°)
	0.0	0.0	0.0	296.98

Plan Sections										
Measured Depth (ft)	Inclination (°)	Azimuth (°)	Vertical Depth (ft)	+N/-S (ft)	+E/-W (ft)	Dogleg Rate (°/100usft)	Build Rate (°/100usft)	Turn Rate (°/100usft)	TFO (°)	Target
0.0	0.00	0.00	0.0	0.0	0.0	0.00	0.00	0.00	0.00	
600.0	0.00	0.00	600.0	0.0	0.0	0.00	0.00	0.00	0.00	
1,612.1	35.42	14.35	1,548.8	293.6	75.1	3.50	3.50	0.00	14.35	
5,275.7	35.42	14.35	4,534.3	2,350.8	601.4	0.00	0.00	0.00	0.00	
6,268.4	95.41	275.95	5,020.0	2,798.9	30.8	10.00	6.04	-9.91	-93.71	LP 8-9H
7,646.2	95.41	275.95	4,890.0	2,941.1	-1,333.5	0.00	0.00	0.00	0.00	WP 1 8-9H
7,817.2	92.00	276.03	4,879.0	2,958.9	-1,503.1	2.00	-2.00	0.05	178.66	
9,652.7	92.00	276.03	4,815.0	3,151.6	-3,327.4	0.00	0.00	0.00	0.00	WP 2 8-9H
9,786.5	89.32	276.12	4,813.5	3,165.8	-3,460.4	2.00	-2.00	0.07	178.00	
13,301.8	89.32	276.12	4,855.0	3,540.8	-6,955.4	0.00	0.00	0.00	0.00	BHL 8-9H

<b>Database:</b>	US_EDM	<b>Local Co-ordinate Reference:</b>	Well Bunker 8-9H
<b>Company:</b>	Magpie Operating, Inc.	<b>TVD Reference:</b>	RKB @ 5014.0ft (KB 17' Akita)
<b>Project:</b>	SEC.29-T5N-R68W	<b>MD Reference:</b>	RKB @ 5014.0ft (KB 17' Akita)
<b>Site:</b>	Bunker 8 Well Pad Sec.29-T5N-R68W	<b>North Reference:</b>	True
<b>Well:</b>	Bunker 8-9H	<b>Survey Calculation Method:</b>	Minimum Curvature
<b>Wellbore:</b>	Wellbore #1		
<b>Design:</b>	Plan #3 (5-19-22)		

Planned Survey									
Measured Depth (ft)	Inclination (°)	Azimuth (°)	Vertical Depth (ft)	+N/-S (ft)	+E/-W (ft)	Vertical Section (ft)	Dogleg Rate (°/100usft)	Build Rate (°/100usft)	Turn Rate (°/100usft)
0.0	0.00	0.00	0.0	0.0	0.0	0.0	0.00	0.00	0.00
100.0	0.00	0.00	100.0	0.0	0.0	0.0	0.00	0.00	0.00
200.0	0.00	0.00	200.0	0.0	0.0	0.0	0.00	0.00	0.00
300.0	0.00	0.00	300.0	0.0	0.0	0.0	0.00	0.00	0.00
400.0	0.00	0.00	400.0	0.0	0.0	0.0	0.00	0.00	0.00
500.0	0.00	0.00	500.0	0.0	0.0	0.0	0.00	0.00	0.00
600.0	0.00	0.00	600.0	0.0	0.0	0.0	0.00	0.00	0.00
KOP 600'MD Build 3.50									
700.0	3.50	14.35	699.9	3.0	0.8	0.7	3.50	3.50	0.00
800.0	7.00	14.35	799.5	11.8	3.0	2.7	3.50	3.50	0.00
900.0	10.50	14.35	898.3	26.6	6.8	6.0	3.50	3.50	0.00
1,000.0	14.00	14.35	996.0	47.1	12.1	10.6	3.50	3.50	0.00
1,100.0	17.50	14.35	1,092.3	73.4	18.8	16.6	3.50	3.50	0.00
1,200.0	21.00	14.35	1,186.7	105.3	26.9	23.8	3.50	3.50	0.00
1,300.0	24.50	14.35	1,278.9	142.8	36.5	32.2	3.50	3.50	0.00
1,400.0	28.00	14.35	1,368.5	185.6	47.5	41.9	3.50	3.50	0.00
1,500.0	31.50	14.35	1,455.3	233.7	59.8	52.7	3.50	3.50	0.00
1,600.0	35.00	14.35	1,539.0	286.8	73.4	64.7	3.50	3.50	0.00
1,612.1	35.42	14.35	1,548.8	293.6	75.1	66.2	3.50	3.50	0.00
Start 3663.6 hold at 1612.1 MD									
1,700.0	35.42	14.35	1,620.5	342.9	87.7	77.4	0.00	0.00	0.00
1,800.0	35.42	14.35	1,702.0	399.1	102.1	90.1	0.00	0.00	0.00
1,900.0	35.42	14.35	1,783.5	455.2	116.5	102.7	0.00	0.00	0.00
2,000.0	35.42	14.35	1,864.9	511.4	130.8	115.4	0.00	0.00	0.00
2,100.0	35.42	14.35	1,946.4	567.5	145.2	128.1	0.00	0.00	0.00
2,200.0	35.42	14.35	2,027.9	623.7	159.6	140.7	0.00	0.00	0.00
2,300.0	35.42	14.35	2,109.4	679.8	173.9	153.4	0.00	0.00	0.00
2,400.0	35.42	14.35	2,190.9	736.0	188.3	166.1	0.00	0.00	0.00
2,500.0	35.42	14.35	2,272.4	792.2	202.7	178.8	0.00	0.00	0.00
2,600.0	35.42	14.35	2,353.9	848.3	217.0	191.4	0.00	0.00	0.00
2,700.0	35.42	14.35	2,435.4	904.5	231.4	204.1	0.00	0.00	0.00
2,800.0	35.42	14.35	2,516.9	960.6	245.8	216.8	0.00	0.00	0.00
2,900.0	35.42	14.35	2,598.3	1,016.8	260.1	229.4	0.00	0.00	0.00
3,000.0	35.42	14.35	2,679.8	1,072.9	274.5	242.1	0.00	0.00	0.00
3,100.0	35.42	14.35	2,761.3	1,129.1	288.9	254.8	0.00	0.00	0.00
3,200.0	35.42	14.35	2,842.8	1,185.2	303.2	267.5	0.00	0.00	0.00
3,300.0	35.42	14.35	2,924.3	1,241.4	317.6	280.1	0.00	0.00	0.00
3,400.0	35.42	14.35	3,005.8	1,297.5	332.0	292.8	0.00	0.00	0.00
3,500.0	35.42	14.35	3,087.3	1,353.7	346.3	305.5	0.00	0.00	0.00
3,600.0	35.42	14.35	3,168.8	1,409.8	360.7	318.2	0.00	0.00	0.00
3,700.0	35.42	14.35	3,250.3	1,466.0	375.1	330.8	0.00	0.00	0.00
3,800.0	35.42	14.35	3,331.7	1,522.1	389.4	343.5	0.00	0.00	0.00
3,900.0	35.42	14.35	3,413.2	1,578.3	403.8	356.2	0.00	0.00	0.00
4,000.0	35.42	14.35	3,494.7	1,634.4	418.2	368.8	0.00	0.00	0.00
4,100.0	35.42	14.35	3,576.2	1,690.6	432.5	381.5	0.00	0.00	0.00
4,200.0	35.42	14.35	3,657.7	1,746.7	446.9	394.2	0.00	0.00	0.00
4,300.0	35.42	14.35	3,739.2	1,802.9	461.3	406.9	0.00	0.00	0.00
4,400.0	35.42	14.35	3,820.7	1,859.1	475.6	419.5	0.00	0.00	0.00
4,500.0	35.42	14.35	3,902.2	1,915.2	490.0	432.2	0.00	0.00	0.00
4,600.0	35.42	14.35	3,983.7	1,971.4	504.4	444.9	0.00	0.00	0.00
4,700.0	35.42	14.35	4,065.1	2,027.5	518.7	457.5	0.00	0.00	0.00
4,800.0	35.42	14.35	4,146.6	2,083.7	533.1	470.2	0.00	0.00	0.00
4,900.0	35.42	14.35	4,228.1	2,139.8	547.5	482.9	0.00	0.00	0.00
5,000.0	35.42	14.35	4,309.6	2,196.0	561.8	495.6	0.00	0.00	0.00

Planned Survey										
Measured			Vertical			Vertical		Dogleg	Build	Turn
Depth	Inclination	Azimuth	Depth	+N/-S	+E/-W	Section	Rate	Rate	Rate	
(ft)	(°)	(°)	(ft)	(ft)	(ft)	(ft)	(°/100usft)	(°/100usft)	(°/100usft)	
5,100.0	35.42	14.35	4,391.1	2,252.1	576.2	508.2	0.00	0.00	0.00	
5,200.0	35.42	14.35	4,472.6	2,308.3	590.6	520.9	0.00	0.00	0.00	
5,275.7	35.42	14.35	4,534.3	2,350.8	601.4	530.5	0.00	0.00	0.00	
KOP Curve DLS 10.00 TFO -93.71										
5,300.0	35.34	10.15	4,554.1	2,364.5	604.4	534.1	10.00	-0.35	-17.26	
5,400.0	36.50	353.18	4,635.3	2,422.7	606.0	559.0	10.00	1.16	-16.97	
5,500.0	39.87	337.91	4,714.1	2,482.0	590.4	599.9	10.00	3.37	-15.27	
5,600.0	44.94	325.09	4,788.0	2,540.9	558.0	655.4	10.00	5.07	-12.82	
5,700.0	51.19	314.57	4,854.9	2,597.3	509.9	723.9	10.00	6.25	-10.51	
5,800.0	58.23	305.85	4,912.7	2,649.7	447.6	803.2	10.00	7.04	-8.72	
5,900.0	65.77	298.41	4,959.7	2,696.4	372.8	891.0	10.00	7.55	-7.44	
6,000.0	73.64	291.82	4,994.4	2,736.0	288.0	984.6	10.00	7.87	-6.59	
6,100.0	81.69	285.75	5,015.7	2,767.4	195.6	1,081.2	10.00	8.05	-6.07	
6,200.0	89.84	279.92	5,023.1	2,789.4	98.4	1,177.7	10.00	8.14	-5.83	
6,268.4	95.41	275.95	5,020.0	2,798.9	30.8	1,242.3	10.00	8.15	-5.80	
Landing Pt 6268'MD 5020'TVD										
6,300.0	95.41	275.95	5,017.0	2,802.1	-0.5	1,271.7	0.00	0.00	0.00	
6,400.0	95.41	275.95	5,007.6	2,812.5	-99.5	1,364.6	0.00	0.00	0.00	
6,500.0	95.41	275.95	4,998.2	2,822.8	-198.5	1,457.5	0.00	0.00	0.00	
6,600.0	95.41	275.95	4,988.7	2,833.1	-297.5	1,550.4	0.00	0.00	0.00	
6,700.0	95.41	275.95	4,979.3	2,843.4	-396.5	1,643.4	0.00	0.00	0.00	
6,800.0	95.41	275.95	4,969.8	2,853.7	-495.6	1,736.3	0.00	0.00	0.00	
6,900.0	95.41	275.95	4,960.4	2,864.1	-594.6	1,829.2	0.00	0.00	0.00	
7,000.0	95.41	275.95	4,951.0	2,874.4	-693.6	1,922.1	0.00	0.00	0.00	
7,100.0	95.41	275.95	4,941.5	2,884.7	-792.6	2,015.1	0.00	0.00	0.00	
7,200.0	95.41	275.95	4,932.1	2,895.0	-891.6	2,108.0	0.00	0.00	0.00	
7,300.0	95.41	275.95	4,922.7	2,905.4	-990.7	2,200.9	0.00	0.00	0.00	
7,400.0	95.41	275.95	4,913.2	2,915.7	-1,089.7	2,293.8	0.00	0.00	0.00	
7,500.0	95.41	275.95	4,903.8	2,926.0	-1,188.7	2,386.7	0.00	0.00	0.00	
7,600.0	95.41	275.95	4,894.4	2,936.3	-1,287.7	2,479.7	0.00	0.00	0.00	
7,646.2	95.41	275.95	4,890.0	2,941.1	-1,333.5	2,522.6	0.00	0.00	0.00	
WP 1 7646'MD 4890'TVD										
7,700.0	94.34	275.98	4,885.4	2,946.7	-1,386.8	2,572.6	2.00	-2.00	0.05	
7,800.0	92.34	276.02	4,879.6	2,957.1	-1,486.0	2,665.8	2.00	-2.00	0.05	
7,817.2	92.00	276.03	4,879.0	2,958.9	-1,503.1	2,681.9	2.00	-2.00	0.05	
Start 1835.6 hold at 7817.2 MD										
7,900.0	92.00	276.03	4,876.1	2,967.6	-1,585.4	2,759.2	0.00	0.00	0.00	
8,000.0	92.00	276.03	4,872.6	2,978.1	-1,684.8	2,852.5	0.00	0.00	0.00	
8,100.0	92.00	276.03	4,869.1	2,988.6	-1,784.2	2,945.8	0.00	0.00	0.00	
8,200.0	92.00	276.03	4,865.6	2,999.1	-1,883.6	3,039.2	0.00	0.00	0.00	
8,300.0	92.00	276.03	4,862.1	3,009.6	-1,983.0	3,132.5	0.00	0.00	0.00	
8,400.0	92.00	276.03	4,858.6	3,020.1	-2,082.4	3,225.8	0.00	0.00	0.00	
8,500.0	92.00	276.03	4,855.2	3,030.6	-2,181.7	3,319.2	0.00	0.00	0.00	
8,600.0	92.00	276.03	4,851.7	3,041.1	-2,281.1	3,412.5	0.00	0.00	0.00	
8,700.0	92.00	276.03	4,848.2	3,051.6	-2,380.5	3,505.8	0.00	0.00	0.00	
8,800.0	92.00	276.03	4,844.7	3,062.1	-2,479.9	3,599.2	0.00	0.00	0.00	
8,900.0	92.00	276.03	4,841.2	3,072.6	-2,579.3	3,692.5	0.00	0.00	0.00	
9,000.0	92.00	276.03	4,837.7	3,083.1	-2,678.7	3,785.8	0.00	0.00	0.00	
9,100.0	92.00	276.03	4,834.3	3,093.6	-2,778.1	3,879.2	0.00	0.00	0.00	
9,200.0	92.00	276.03	4,830.8	3,104.1	-2,877.4	3,972.5	0.00	0.00	0.00	
9,300.0	92.00	276.03	4,827.3	3,114.6	-2,976.8	4,065.8	0.00	0.00	0.00	
9,400.0	92.00	276.03	4,823.8	3,125.1	-3,076.2	4,159.2	0.00	0.00	0.00	
9,500.0	92.00	276.03	4,820.3	3,135.6	-3,175.6	4,252.5	0.00	0.00	0.00	

<b>Database:</b>	US_EDM	<b>Local Co-ordinate Reference:</b>	Well Bunker 8-9H
<b>Company:</b>	Magpie Operating, Inc.	<b>TVD Reference:</b>	RKB @ 5014.0ft (KB 17' Akita)
<b>Project:</b>	SEC.29-T5N-R68W	<b>MD Reference:</b>	RKB @ 5014.0ft (KB 17' Akita)
<b>Site:</b>	Bunker 8 Well Pad Sec.29-T5N-R68W	<b>North Reference:</b>	True
<b>Well:</b>	Bunker 8-9H	<b>Survey Calculation Method:</b>	Minimum Curvature
<b>Wellbore:</b>	Wellbore #1		
<b>Design:</b>	Plan #3 (5-19-22)		

Planned Survey										
Measured Depth (ft)	Inclination (°)	Azimuth (°)	Vertical Depth (ft)	+N/-S (ft)	+E/-W (ft)	Vertical Section (ft)	Dogleg Rate (°/100usft)	Build Rate (°/100usft)	Turn Rate (°/100usft)	
9,600.0	92.00	276.03	4,816.8	3,146.1	-3,275.0	4,345.8	0.00	0.00	0.00	
9,652.7	92.00	276.03	4,815.0	3,151.6	-3,327.4	4,395.1	0.00	0.00	0.00	
WP 2 9652'MD 4815'TVD										
9,700.0	91.05	276.06	4,813.7	3,156.6	-3,374.4	4,439.2	2.00	-2.00	0.07	
9,786.5	89.32	276.12	4,813.5	3,165.8	-3,460.4	4,520.0	2.00	-2.00	0.07	
Start 3515.3 hold at 9786.5 MD										
9,800.0	89.32	276.12	4,813.6	3,167.2	-3,473.8	4,532.6	0.00	0.00	0.00	
9,900.0	89.32	276.12	4,814.8	3,177.9	-3,573.2	4,626.1	0.00	0.00	0.00	
10,000.0	89.32	276.12	4,816.0	3,188.5	-3,672.7	4,719.5	0.00	0.00	0.00	
10,100.0	89.32	276.12	4,817.2	3,199.2	-3,772.1	4,813.0	0.00	0.00	0.00	
10,200.0	89.32	276.12	4,818.3	3,209.9	-3,871.5	4,906.4	0.00	0.00	0.00	
10,300.0	89.32	276.12	4,819.5	3,220.5	-3,970.9	4,999.8	0.00	0.00	0.00	
10,400.0	89.32	276.12	4,820.7	3,231.2	-4,070.4	5,093.3	0.00	0.00	0.00	
10,500.0	89.32	276.12	4,821.9	3,241.9	-4,169.8	5,186.7	0.00	0.00	0.00	
10,600.0	89.32	276.12	4,823.1	3,252.6	-4,269.2	5,280.2	0.00	0.00	0.00	
10,700.0	89.32	276.12	4,824.3	3,263.2	-4,368.6	5,373.6	0.00	0.00	0.00	
10,800.0	89.32	276.12	4,825.4	3,273.9	-4,468.0	5,467.0	0.00	0.00	0.00	
10,900.0	89.32	276.12	4,826.6	3,284.6	-4,567.5	5,560.5	0.00	0.00	0.00	
11,000.0	89.32	276.12	4,827.8	3,295.2	-4,666.9	5,653.9	0.00	0.00	0.00	
11,100.0	89.32	276.12	4,829.0	3,305.9	-4,766.3	5,747.4	0.00	0.00	0.00	
11,200.0	89.32	276.12	4,830.2	3,316.6	-4,865.7	5,840.8	0.00	0.00	0.00	
11,300.0	89.32	276.12	4,831.3	3,327.2	-4,965.2	5,934.3	0.00	0.00	0.00	
11,400.0	89.32	276.12	4,832.5	3,337.9	-5,064.6	6,027.7	0.00	0.00	0.00	
11,500.0	89.32	276.12	4,833.7	3,348.6	-5,164.0	6,121.1	0.00	0.00	0.00	
11,600.0	89.32	276.12	4,834.9	3,359.2	-5,263.4	6,214.6	0.00	0.00	0.00	
11,700.0	89.32	276.12	4,836.1	3,369.9	-5,362.8	6,308.0	0.00	0.00	0.00	
11,800.0	89.32	276.12	4,837.3	3,380.6	-5,462.3	6,401.5	0.00	0.00	0.00	
11,900.0	89.32	276.12	4,838.4	3,391.2	-5,561.7	6,494.9	0.00	0.00	0.00	
12,000.0	89.32	276.12	4,839.6	3,401.9	-5,661.1	6,588.3	0.00	0.00	0.00	
12,100.0	89.32	276.12	4,840.8	3,412.6	-5,760.5	6,681.8	0.00	0.00	0.00	
12,200.0	89.32	276.12	4,842.0	3,423.2	-5,860.0	6,775.2	0.00	0.00	0.00	
12,300.0	89.32	276.12	4,843.2	3,433.9	-5,959.4	6,868.7	0.00	0.00	0.00	
12,400.0	89.32	276.12	4,844.3	3,444.6	-6,058.8	6,962.1	0.00	0.00	0.00	
12,500.0	89.32	276.12	4,845.5	3,455.2	-6,158.2	7,055.6	0.00	0.00	0.00	
12,600.0	89.32	276.12	4,846.7	3,465.9	-6,257.6	7,149.0	0.00	0.00	0.00	
12,700.0	89.32	276.12	4,847.9	3,476.6	-6,357.1	7,242.4	0.00	0.00	0.00	
12,800.0	89.32	276.12	4,849.1	3,487.2	-6,456.5	7,335.9	0.00	0.00	0.00	
12,900.0	89.32	276.12	4,850.3	3,497.9	-6,555.9	7,429.3	0.00	0.00	0.00	
13,000.0	89.32	276.12	4,851.4	3,508.6	-6,655.3	7,522.8	0.00	0.00	0.00	
13,100.0	89.32	276.12	4,852.6	3,519.2	-6,754.8	7,616.2	0.00	0.00	0.00	
13,200.0	89.32	276.12	4,853.8	3,529.9	-6,854.2	7,709.6	0.00	0.00	0.00	
13,300.0	89.32	276.12	4,855.0	3,540.6	-6,953.6	7,803.1	0.00	0.00	0.00	
13,301.8	89.32	276.12	4,855.0	3,540.8	-6,955.4	7,804.8	0.00	0.00	0.00	
TD at 13301.8'MD 4855'TVD										

<b>Database:</b>	US_EDM	<b>Local Co-ordinate Reference:</b>	Well Bunker 8-9H
<b>Company:</b>	Magpie Operating, Inc.	<b>TVD Reference:</b>	RKB @ 5014.0ft (KB 17' Akita)
<b>Project:</b>	SEC.29-T5N-R68W	<b>MD Reference:</b>	RKB @ 5014.0ft (KB 17' Akita)
<b>Site:</b>	Bunker 8 Well Pad Sec.29-T5N-R68W	<b>North Reference:</b>	True
<b>Well:</b>	Bunker 8-9H	<b>Survey Calculation Method:</b>	Minimum Curvature
<b>Wellbore:</b>	Wellbore #1		
<b>Design:</b>	Plan #3 (5-19-22)		

Design Targets										
Target Name										
- hit/miss target	Dip Angle	Dip Dir.	TVD	+N/-S	+E/-W	Northing	Easting		Latitude	Longitude
- Shape	(°)	(°)	(ft)	(ft)	(ft)	(usft)	(usft)			
SHL 2200'FSL, 2275'FW - plan hits target center - Point	0.00	0.00	0.0	0.0	0.0	1,377,935.55	3,130,398.61		40.369890	-105.032006
WP 2 8-9H - plan hits target center - Point	0.00	0.00	4,815.0	3,151.6	-3,327.4	1,381,069.41	3,127,054.76		40.378540	-105.043949
BHL 8-9H - plan hits target center - Point	0.00	0.00	4,855.0	3,540.8	-6,955.4	1,381,439.40	3,123,424.91		40.379606	-105.056971
WP 1 8-9H - plan hits target center - Point	0.00	0.00	4,890.0	2,941.1	-1,333.5	1,380,869.42	3,129,049.67		40.377963	-105.036792
LP 8-9H - plan hits target center - Point	0.00	0.00	5,020.0	2,798.9	30.8	1,380,734.43	3,130,414.61		40.377573	-105.031895

Plan Annotations					
	Measured Depth	Vertical Depth	Local Coordinates		
	(ft)	(ft)	+N/-S (ft)	+E/-W (ft)	Comment
	600.0	600.0	0.0	0.0	KOP 600'MD Build 3.50
	1,612.1	1,548.8	293.6	75.1	Start 3663.6 hold at 1612.1 MD
	5,275.7	4,534.3	2,350.8	601.4	KOP Curve DLS 10.00 TFO -93.71
	6,268.4	5,020.0	2,798.9	30.8	Landing Pt 6268'MD 5020'TVD
	7,646.2	4,890.0	2,941.1	-1,333.5	WP 1 7646'MD 4890'TVD
	7,817.2	4,879.0	2,958.9	-1,503.1	Start 1835.6 hold at 7817.2 MD
	9,652.7	4,815.0	3,151.6	-3,327.4	WP 2 9652'MD 4815'TVD
	9,786.5	4,813.5	3,165.8	-3,460.4	Start 3515.3 hold at 9786.5 MD
	13,301.8	4,855.0	3,540.8	-6,955.4	TD at 13301.8'MD 4855'TVD