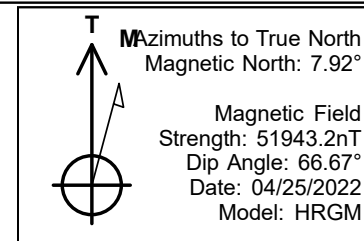


PDC Energy Inc. DJ Basin

Bost Farm 39N-8C-L
 Bost Farms 5-7 Pad SEC.7-T5N-R66W
 North American Datum 1983 , US State Plane 1983, Colorado Northern Zone
 Ground Elevation: 4874.0
 +N/-S +E/-W Northing Easting Longitude Slot
 0.0 0.0 1394603.55 3187076.73 40.414643 -104.828144
 Patterson 272 - RKB 28WELL @ 4902ft (Patterson 272 - RKB 28')



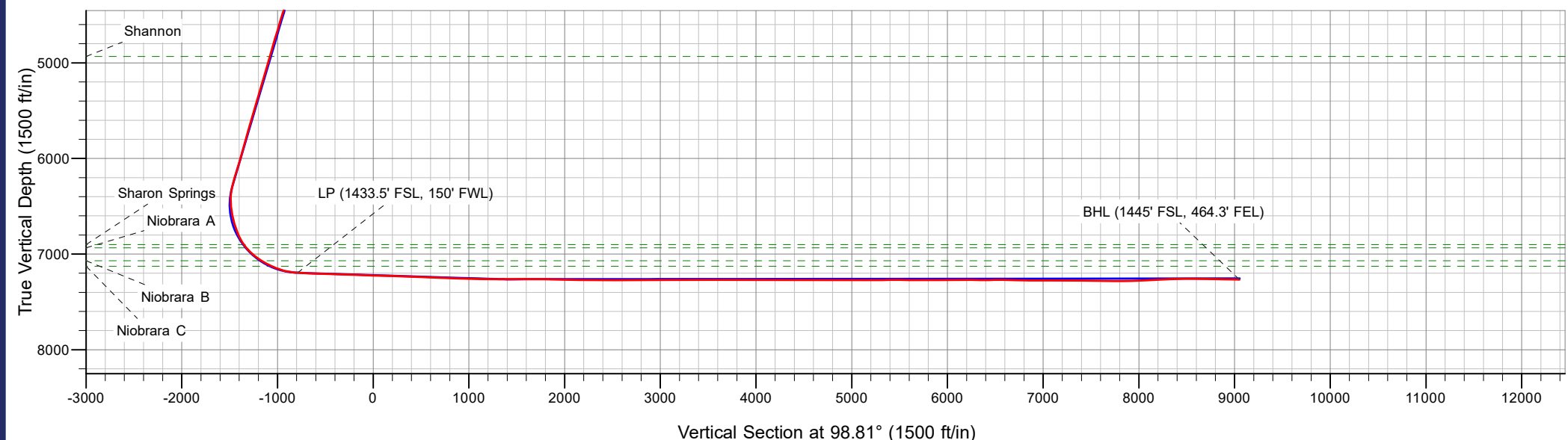
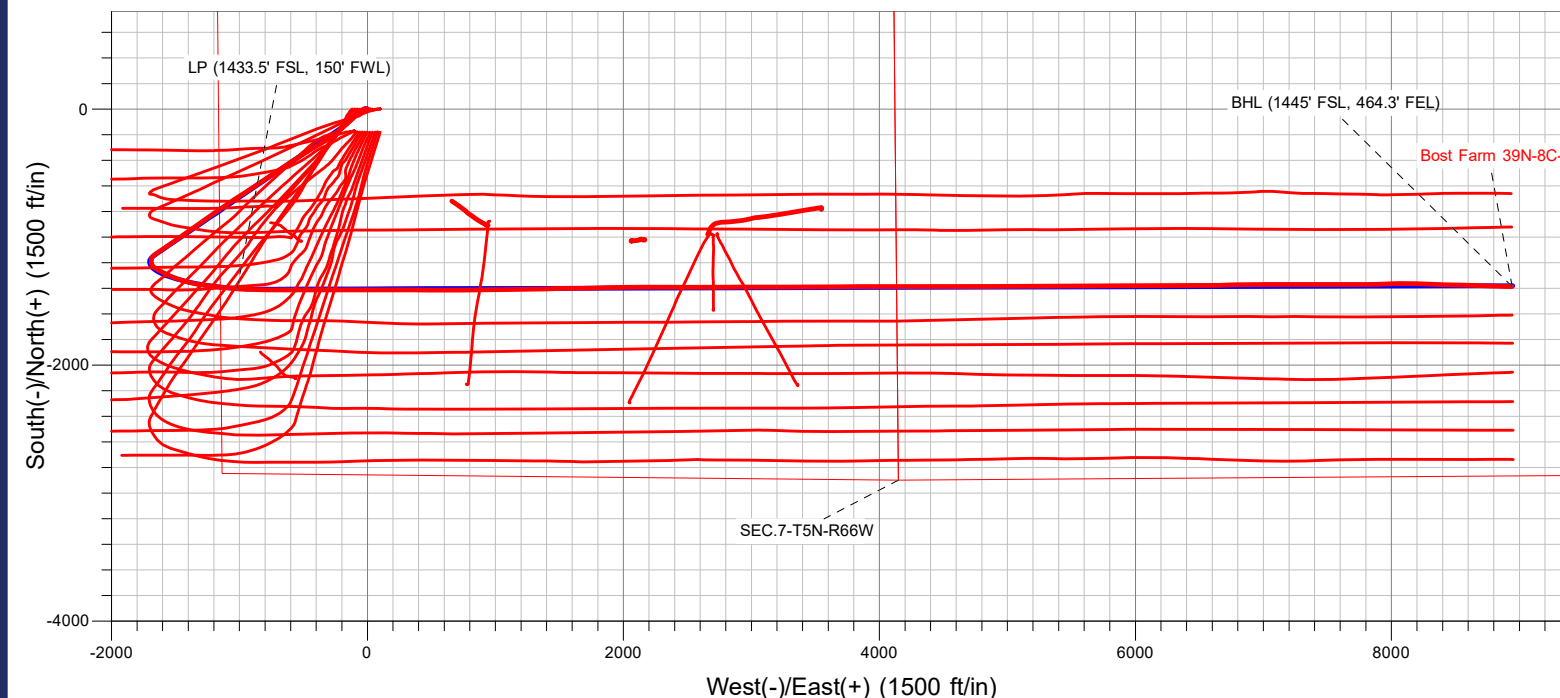
Bost Farms 5-7 Pad SEC.7-T5N-R66W
 Bost Farm 39N-8C-L
 39N-8C-L Final Surveys
 15:18, May 16 2022



ANNOTATIONS

MD	TVD	Annotation
7976.1	7195.8	LP (1433.5' FSL, 150' FWL)
17941.0	7266.3	BHL (1445' FSL, 464.3' FEL)

FINAL SURVEY
Projected Bottom Hole Location
17941' MD / 7266.3' TVD
89.1° INC / 91.5° AZM
1445' FSL / 464.3' FEL





PDC Energy Inc. DJ Basin

SEC.7-T5N-R66W

Bost Farms 5-7 Pad SEC.7-T5N-R66W

Bost Farm 39N-8C-L

Bost Farm 39N-8C-L Wellbore #1

Survey: Surface

Standard Survey Report

16 May, 2022



**directional
drilling**

Company:	PDC Energy Inc. DJ Basin	Local Co-ordinate Reference:	Well Bost Farm 39N-8C-L
Project:	SEC.7-T5N-R66W	TVD Reference:	WELL @ 4902ft (Patterson 272 - RKB 28')
Site:	Bost Farms 5-7 Pad SEC.7-T5N-R66W	MD Reference:	WELL @ 4902ft (Patterson 272 - RKB 28')
Well:	Bost Farm 39N-8C-L	North Reference:	True
Wellbore:	Bost Farm 39N-8C-L Wellbore #1	Survey Calculation Method:	Minimum Curvature
Design:	39N-8C-L_Final Surveys	Database:	US_EDM

Project	SEC.7-T5N-R66W, Weld County, Co		
Map System:	US State Plane 1983	System Datum:	Mean Sea Level
Geo Datum:	North American Datum 1983		
Map Zone:	Colorado Northern Zone		Using geodetic scale factor

Site	Bost Farms 5-7 Pad SEC.7-T5N-R66W		
Site Position:		Northing:	1,394,603.55 usft
From:	Lat/Long	Easting:	3,187,178.01 usft
Position Uncertainty:	0.0 ft	Slot Radius:	13-3/16 "
		Latitude:	40.414641
		Longitude:	-104.827780
		Grid Convergence:	0.43 °

Well	Bost Farm 39N-8C-L		
Well Position	+N/-S	0.0 ft	Northing: 1,394,603.55 usft
	+E/-W	0.0 ft	Easting: 3,187,076.73 usft
Position Uncertainty	0.0 ft	Wellhead Elevation:	ft
		Latitude:	40.414643
		Longitude:	-104.828144
		Ground Level:	4,874.0 ft

Wellbore	Bost Farm 39N-8C-L Wellbore #1				
Magnetics	Model Name	Sample Date	Declination (°)	Dip Angle (°)	Field Strength (nT)
	HRGM	04/25/2022	7.92	66.67	51,943.23631789

Design	39N-8C-L_Final Surveys				
Audit Notes:					
Version:	1.0	Phase:	ACTUAL	Tie On Depth:	0.0
Vertical Section:	Depth From (TVD) (ft)	+N/-S (ft)	+E/-W (ft)	Direction (°)	
	0.0	0.0	0.0	98.81	

Survey Program	Date 05/16/2022				
From (ft)	To (ft)	Survey (Wellbore)	Tool Name	Description	
161.5	17,941.0	Surface (Bost Farm 39N-8C-L Wellbore #1	MWD	MWD - Standard	

Survey									
Measured Depth (ft)	Inclination (°)	Azimuth (°)	Vertical Depth (ft)	+N/-S (ft)	+E/-W (ft)	Vertical Section (ft)	Dogleg Rate (°/100usft)	Build Rate (°/100usft)	Turn Rate (°/100usft)
0.0	0.00	0.00	0.0	0.0	0.0	0.0	0.00	0.00	0.00
161.5	0.40	335.80	161.5	0.5	-0.2	-0.3	0.25	0.25	0.00
252.5	0.40	304.50	252.5	1.0	-0.6	-0.8	0.24	0.00	-34.40
344.5	0.50	310.30	344.5	1.4	-1.2	-1.4	0.12	0.11	6.30
433.5	0.70	304.30	433.5	2.0	-1.9	-2.2	0.24	0.22	-6.74
522.5	1.10	308.50	522.5	2.8	-3.1	-3.5	0.46	0.45	4.72
612.5	1.10	302.30	612.5	3.8	-4.5	-5.0	0.13	0.00	-6.89
702.5	1.10	296.20	702.4	4.7	-6.0	-6.6	0.13	0.00	-6.78
791.5	2.30	276.20	791.4	5.2	-8.5	-9.2	1.48	1.35	-22.47
880.5	4.00	258.90	880.3	4.8	-13.3	-13.9	2.17	1.91	-19.44

Company:	PDC Energy Inc. DJ Basin	Local Co-ordinate Reference:	Well Bost Farm 39N-8C-L
Project:	SEC.7-T5N-R66W	TVD Reference:	WELL @ 4902ft (Patterson 272 - RKB 28')
Site:	Bost Farms 5-7 Pad SEC.7-T5N-R66W	MD Reference:	WELL @ 4902ft (Patterson 272 - RKB 28')
Well:	Bost Farm 39N-8C-L	North Reference:	True
Wellbore:	Bost Farm 39N-8C-L Wellbore #1	Survey Calculation Method:	Minimum Curvature
Design:	39N-8C-L_Final Surveys	Database:	US_EDM

Survey										
Measured Depth (ft)	Inclination (°)	Azimuth (°)	Vertical Depth (ft)	+N/-S (ft)	+E/-W (ft)	Vertical Section (ft)	Dogleg Rate (°/100usft)	Build Rate (°/100usft)	Turn Rate (°/100usft)	
970.5	6.20	251.00	969.9	2.6	-21.0	-21.2	2.56	2.44	-8.78	
1,059.5	7.90	242.10	1,058.2	-1.8	-31.0	-30.3	2.26	1.91	-10.00	
1,149.5	8.40	234.30	1,147.3	-8.5	-41.8	-40.0	1.35	0.56	-8.67	
1,238.5	10.60	228.70	1,235.1	-17.7	-53.2	-49.9	2.68	2.47	-6.29	
1,328.5	12.40	229.40	1,323.3	-29.5	-66.8	-61.4	2.01	2.00	0.78	
1,417.5	14.90	230.30	1,409.8	-43.0	-82.8	-75.2	2.82	2.81	1.01	
1,506.5	15.30	227.60	1,495.7	-58.2	-100.3	-90.2	0.91	0.45	-3.03	
1,608.5	17.10	229.20	1,593.6	-77.1	-121.6	-108.3	1.82	1.76	1.57	
1,685.0	17.18	228.65	1,666.7	-91.9	-138.6	-122.9	0.24	0.10	-0.72	
1,779.0	16.43	229.16	1,756.7	-109.8	-159.1	-140.4	0.81	-0.80	0.54	
1,874.0	17.00	222.46	1,847.7	-128.8	-178.6	-156.8	2.11	0.60	-7.05	
1,969.0	18.93	227.65	1,938.1	-149.4	-199.4	-174.1	2.64	2.03	5.46	
2,063.0	21.08	232.16	2,026.4	-170.1	-224.0	-195.3	2.81	2.29	4.80	
2,158.0	22.32	231.71	2,114.7	-191.7	-251.6	-219.3	1.32	1.31	-0.47	
2,253.0	23.01	233.54	2,202.4	-214.0	-280.7	-244.6	1.04	0.73	1.93	
2,347.0	23.19	236.11	2,288.8	-235.2	-310.9	-271.2	1.09	0.19	2.73	
2,442.0	23.22	238.45	2,376.1	-255.4	-342.4	-299.2	0.97	0.03	2.46	
2,537.0	22.18	239.68	2,463.8	-274.3	-373.8	-327.4	1.20	-1.09	1.29	
2,631.0	23.21	239.37	2,550.5	-292.7	-405.1	-355.4	1.10	1.10	-0.33	
2,726.0	23.12	239.51	2,637.8	-311.7	-437.2	-384.3	0.11	-0.09	0.15	
2,820.0	22.89	237.83	2,724.4	-330.8	-468.6	-412.4	0.74	-0.24	-1.79	
2,915.0	23.09	236.30	2,811.8	-350.9	-499.7	-440.1	0.66	0.21	-1.61	
3,010.0	22.39	237.97	2,899.4	-370.9	-530.6	-467.5	1.00	-0.74	1.76	
3,104.0	22.72	237.83	2,986.2	-390.0	-561.1	-494.7	0.36	0.35	-0.15	
3,199.0	22.83	237.85	3,073.8	-409.6	-592.3	-522.5	0.12	0.12	0.02	
3,294.0	22.28	235.07	3,161.6	-429.7	-622.6	-549.4	1.26	-0.58	-2.93	
3,389.0	21.81	235.58	3,249.6	-450.0	-652.0	-575.3	0.53	-0.49	0.54	
3,484.0	22.75	235.59	3,337.5	-470.4	-681.7	-601.6	0.99	0.99	0.01	
3,579.0	22.03	236.87	3,425.4	-490.5	-711.7	-628.2	0.92	-0.76	1.35	
3,673.0	21.70	236.47	3,512.6	-509.7	-741.0	-654.1	0.39	-0.35	-0.43	
3,768.0	21.62	236.62	3,600.9	-529.1	-770.2	-680.1	0.10	-0.08	0.16	
3,862.0	22.54	234.98	3,688.0	-548.9	-799.5	-705.9	1.18	0.98	-1.74	
3,957.0	22.62	236.67	3,775.7	-569.4	-829.6	-732.6	0.69	0.08	1.78	
4,052.0	22.21	237.94	3,863.6	-589.0	-860.1	-759.7	0.67	-0.43	1.34	
4,146.0	22.09	236.75	3,950.6	-608.1	-890.0	-786.3	0.49	-0.13	-1.27	
4,241.0	21.89	236.26	4,038.7	-627.7	-919.6	-812.6	0.29	-0.21	-0.52	
4,335.0	21.13	235.72	4,126.2	-647.0	-948.2	-837.9	0.84	-0.81	-0.57	
4,430.0	22.34	237.01	4,214.4	-666.5	-977.5	-863.8	1.37	1.27	1.36	
4,510.2	22.50	236.99	4,288.5	-683.1	-1,003.1	-886.6	0.20	0.20	-0.02	
Sussex										
4,525.0	22.53	236.99	4,302.2	-686.2	-1,007.9	-890.9	0.20	0.20	-0.02	
4,620.0	22.28	237.59	4,390.0	-705.8	-1,038.4	-918.0	0.36	-0.26	0.63	
4,714.0	22.41	237.51	4,477.0	-725.0	-1,068.5	-944.8	0.14	0.14	-0.09	
4,809.0	22.11	235.47	4,564.9	-744.8	-1,098.5	-971.4	0.87	-0.32	-2.15	

Company:	PDC Energy Inc. DJ Basin	Local Co-ordinate Reference:	Well Bost Farm 39N-8C-L
Project:	SEC.7-T5N-R66W	TVD Reference:	WELL @ 4902ft (Patterson 272 - RKB 28')
Site:	Bost Farms 5-7 Pad SEC.7-T5N-R66W	MD Reference:	WELL @ 4902ft (Patterson 272 - RKB 28')
Well:	Bost Farm 39N-8C-L	North Reference:	True
Wellbore:	Bost Farm 39N-8C-L Wellbore #1	Survey Calculation Method:	Minimum Curvature
Design:	39N-8C-L_Final Surveys	Database:	US_EDM

Survey									
Measured Depth (ft)	Inclination (°)	Azimuth (°)	Vertical Depth (ft)	+N/-S (ft)	+E/-W (ft)	Vertical Section (ft)	Dogleg Rate (°/100usft)	Build Rate (°/100usft)	Turn Rate (°/100usft)
4,904.0	21.66	236.53	4,653.1	-764.6	-1,127.9	-997.4	0.63	-0.47	1.12
4,999.0	22.03	235.03	4,741.2	-784.5	-1,157.1	-1,023.2	0.70	0.39	-1.58
5,093.0	22.34	235.31	4,828.3	-804.8	-1,186.2	-1,048.9	0.35	0.33	0.30
5,188.0	22.82	234.99	4,916.0	-825.6	-1,216.2	-1,075.3	0.52	0.51	-0.34
5,205.9	22.53	234.67	4,932.5	-829.6	-1,221.8	-1,080.3	1.76	-1.62	-1.82
Shannon									
5,283.0	21.29	233.17	5,004.0	-846.5	-1,245.1	-1,100.7	1.76	-1.61	-1.94
5,377.0	21.86	232.51	5,091.5	-867.4	-1,272.6	-1,124.7	0.66	0.61	-0.70
5,472.0	22.62	236.17	5,179.4	-888.4	-1,301.8	-1,150.3	1.66	0.80	3.85
5,567.0	22.13	235.03	5,267.2	-908.8	-1,331.7	-1,176.7	0.69	-0.52	-1.20
5,661.0	22.11	235.56	5,354.3	-928.9	-1,360.8	-1,202.4	0.21	-0.02	0.56
5,756.0	22.24	235.70	5,442.3	-949.2	-1,390.4	-1,228.5	0.15	0.14	0.15
5,851.0	21.52	235.88	5,530.5	-969.1	-1,419.6	-1,254.4	0.76	-0.76	0.19
5,946.0	21.62	233.85	5,618.8	-989.2	-1,448.2	-1,279.5	0.79	0.11	-2.14
6,041.0	21.26	235.76	5,707.2	-1,009.2	-1,476.6	-1,304.5	0.83	-0.38	2.01
6,135.0	21.19	235.20	5,794.8	-1,028.5	-1,504.6	-1,329.3	0.23	-0.07	-0.60
6,230.0	21.07	234.84	5,883.5	-1,048.1	-1,532.7	-1,354.0	0.19	-0.13	-0.38
6,325.0	22.18	235.25	5,971.8	-1,068.2	-1,561.4	-1,379.3	1.18	1.17	0.43
6,419.0	22.40	236.14	6,058.8	-1,088.3	-1,590.8	-1,405.3	0.43	0.23	0.95
6,514.0	21.85	235.62	6,146.8	-1,108.3	-1,620.4	-1,431.5	0.61	-0.58	-0.55
6,609.0	22.16	235.46	6,234.8	-1,128.5	-1,649.8	-1,457.4	0.33	0.33	-0.17
6,703.0	18.43	224.14	6,323.0	-1,149.2	-1,674.7	-1,478.9	5.74	-3.97	-12.04
6,798.0	16.97	193.94	6,413.7	-1,173.5	-1,688.6	-1,488.8	9.68	-1.54	-31.79
6,893.0	16.65	169.45	6,504.8	-1,200.4	-1,689.4	-1,485.6	7.41	-0.34	-25.78
6,987.0	16.51	143.89	6,595.0	-1,224.4	-1,679.1	-1,471.7	7.70	-0.15	-27.19
7,082.0	17.20	122.85	6,686.0	-1,243.0	-1,659.3	-1,449.3	6.43	0.73	-22.15
7,176.0	23.32	117.50	6,774.1	-1,259.1	-1,631.1	-1,418.9	6.80	6.51	-5.69
7,271.0	31.90	117.11	6,858.2	-1,279.3	-1,592.0	-1,377.2	9.03	9.03	-0.41
7,322.0	36.16	115.87	6,900.5	-1,292.0	-1,566.4	-1,350.0	8.46	8.35	-2.44
Sharon Springs									
7,363.8	39.66	115.02	6,933.5	-1,303.0	-1,543.2	-1,325.4	8.46	8.37	-2.02
Niobrara A									
7,366.0	39.84	114.98	6,935.2	-1,303.6	-1,542.0	-1,324.1	8.46	8.38	-1.86
7,460.0	49.53	109.55	7,001.9	-1,328.3	-1,480.8	-1,259.8	11.07	10.31	-5.78
7,555.0	57.86	104.56	7,058.2	-1,350.6	-1,407.7	-1,184.1	9.73	8.77	-5.25
7,574.7	58.69	103.60	7,068.5	-1,354.7	-1,391.5	-1,167.5	5.94	4.24	-4.88
Niobrara B									
7,650.0	61.95	100.07	7,105.8	-1,368.1	-1,327.4	-1,102.1	5.94	4.32	-4.68
7,696.5	65.14	98.28	7,126.5	-1,374.7	-1,286.4	-1,060.5	7.69	6.87	-3.85
Niobrara C									
7,744.0	68.43	96.54	7,145.2	-1,380.3	-1,243.0	-1,016.9	7.69	6.92	-3.66
7,839.0	74.31	95.82	7,175.6	-1,390.0	-1,153.6	-927.0	6.23	6.19	-0.76
7,933.0	84.92	96.43	7,192.5	-1,399.8	-1,061.8	-834.8	11.31	11.29	0.65
7,976.1	86.20	94.86	7,195.8	-1,404.1	-1,019.0	-791.9	4.70	2.98	-3.65

Company:	PDC Energy Inc. DJ Basin	Local Co-ordinate Reference:	Well Bost Farm 39N-8C-L
Project:	SEC.7-T5N-R66W	TVD Reference:	WELL @ 4902ft (Patterson 272 - RKB 28')
Site:	Bost Farms 5-7 Pad SEC.7-T5N-R66W	MD Reference:	WELL @ 4902ft (Patterson 272 - RKB 28')
Well:	Bost Farm 39N-8C-L	North Reference:	True
Wellbore:	Bost Farm 39N-8C-L Wellbore #1	Survey Calculation Method:	Minimum Curvature
Design:	39N-8C-L_Final Surveys	Database:	US_EDM

Survey

Measured Depth (ft)	Inclination (°)	Azimuth (°)	Vertical Depth (ft)	+N/-S (ft)	+E/-W (ft)	Vertical Section (ft)	Dogleg Rate (°/100usft)	Build Rate (°/100usft)	Turn Rate (°/100usft)
LP (1433.5' FSL, 150' FWL)									
8,028.0	87.75	92.97	7,198.6	-1,407.6	-967.3	-740.2	4.70	2.98	-3.64
8,123.0	88.59	90.61	7,201.6	-1,410.6	-872.4	-646.0	2.64	0.88	-2.48
8,217.0	88.14	90.36	7,204.3	-1,411.4	-778.5	-553.0	0.55	-0.48	-0.27
8,312.0	87.91	89.99	7,207.6	-1,411.7	-683.5	-459.2	0.46	-0.24	-0.39
8,407.0	87.60	90.53	7,211.3	-1,412.1	-588.6	-365.3	0.66	-0.33	0.57
8,502.0	88.38	89.42	7,214.6	-1,412.0	-493.7	-271.5	1.43	0.82	-1.17
8,596.0	88.11	90.66	7,217.5	-1,412.1	-399.7	-178.6	1.35	-0.29	1.32
8,691.0	87.90	89.65	7,220.8	-1,412.4	-304.8	-84.8	1.09	-0.22	-1.06
8,786.0	88.15	89.83	7,224.1	-1,411.9	-209.8	9.0	0.32	0.26	0.19
8,880.0	88.37	89.63	7,226.9	-1,411.5	-115.9	101.8	0.32	0.23	-0.21
8,975.0	88.02	90.30	7,229.9	-1,411.4	-20.9	195.6	0.80	-0.37	0.71
9,070.0	88.38	90.14	7,232.9	-1,411.8	74.0	289.5	0.41	0.38	-0.17
9,164.0	88.34	89.65	7,235.6	-1,411.6	168.0	382.3	0.52	-0.04	-0.52
9,259.0	87.94	90.44	7,238.7	-1,411.7	262.9	476.1	0.93	-0.42	0.83
9,354.0	87.99	89.85	7,242.0	-1,411.9	357.9	570.0	0.62	0.05	-0.62
9,448.0	87.67	89.89	7,245.6	-1,411.7	451.8	662.8	0.34	-0.34	0.04
9,543.0	87.94	90.68	7,249.2	-1,412.2	546.7	756.7	0.88	0.28	0.83
9,638.0	88.04	90.64	7,252.6	-1,413.3	641.7	850.6	0.11	0.11	-0.04
9,732.0	88.23	90.76	7,255.6	-1,414.4	735.6	943.7	0.24	0.20	0.13
9,826.0	87.94	88.81	7,258.8	-1,414.1	829.6	1,036.4	2.10	-0.31	-2.07
10,015.0	90.02	88.60	7,262.1	-1,409.8	1,018.5	1,222.5	1.11	1.10	-0.11
10,109.0	90.40	89.36	7,261.8	-1,408.1	1,112.5	1,315.1	0.90	0.40	0.81
10,203.0	89.88	89.06	7,261.6	-1,406.8	1,206.5	1,407.8	0.64	-0.55	-0.32
10,297.0	90.19	89.16	7,261.5	-1,405.4	1,300.4	1,500.4	0.35	0.33	0.11
10,391.0	89.98	88.92	7,261.4	-1,403.8	1,394.4	1,593.0	0.34	-0.22	-0.26
10,485.0	89.72	88.61	7,261.6	-1,401.8	1,488.4	1,685.6	0.43	-0.28	-0.33
10,579.0	89.17	89.57	7,262.5	-1,400.3	1,582.4	1,778.2	1.18	-0.59	1.02
10,674.0	88.60	89.24	7,264.4	-1,399.3	1,677.4	1,872.0	0.69	-0.60	-0.35
10,768.0	88.84	88.32	7,266.5	-1,397.3	1,771.3	1,964.5	1.01	0.26	-0.98
10,862.0	89.33	87.51	7,268.0	-1,393.9	1,865.2	2,056.8	1.01	0.52	-0.86
10,957.0	89.44	89.90	7,269.0	-1,391.7	1,960.2	2,150.3	2.52	0.12	2.52
11,052.0	88.93	90.14	7,270.3	-1,391.8	2,055.2	2,244.2	0.59	-0.54	0.25
11,147.0	88.68	89.47	7,272.3	-1,391.4	2,150.2	2,338.0	0.75	-0.26	-0.71
11,241.0	89.71	90.50	7,273.6	-1,391.4	2,244.2	2,430.9	1.55	1.10	1.10
11,335.0	90.87	89.24	7,273.2	-1,391.2	2,338.2	2,523.7	1.82	1.23	-1.34
11,524.0	90.15	90.71	7,271.5	-1,391.1	2,527.1	2,710.4	0.87	-0.38	0.78
11,618.0	90.12	90.36	7,271.3	-1,392.0	2,621.1	2,803.5	0.37	-0.03	-0.37
11,712.0	90.34	88.43	7,270.9	-1,391.0	2,715.1	2,896.2	2.07	0.23	-2.05
11,807.0	89.91	90.65	7,270.7	-1,390.3	2,810.1	2,989.9	2.38	-0.45	2.34
11,901.0	90.38	89.02	7,270.4	-1,390.0	2,904.1	3,082.8	1.80	0.50	-1.73
11,994.0	90.32	89.59	7,269.9	-1,388.9	2,997.1	3,174.5	0.62	-0.06	0.61
12,089.0	89.64	90.73	7,269.9	-1,389.1	3,092.1	3,268.4	1.40	-0.72	1.20
12,183.0	89.88	90.21	7,270.3	-1,389.9	3,186.1	3,361.4	0.61	0.26	-0.55

Company:	PDC Energy Inc. DJ Basin	Local Co-ordinate Reference:	Well Bost Farm 39N-8C-L
Project:	SEC.7-T5N-R66W	TVD Reference:	WELL @ 4902ft (Patterson 272 - RKB 28')
Site:	Bost Farms 5-7 Pad SEC.7-T5N-R66W	MD Reference:	WELL @ 4902ft (Patterson 272 - RKB 28')
Well:	Bost Farm 39N-8C-L	North Reference:	True
Wellbore:	Bost Farm 39N-8C-L Wellbore #1	Survey Calculation Method:	Minimum Curvature
Design:	39N-8C-L_Final Surveys	Database:	US_EDM

Survey

Measured Depth (ft)	Inclination (°)	Azimuth (°)	Vertical Depth (ft)	+N/-S (ft)	+E/-W (ft)	Vertical Section (ft)	Dogleg Rate (°/100usft)	Build Rate (°/100usft)	Turn Rate (°/100usft)
12,278.0	90.18	89.16	7,270.3	-1,389.4	3,281.1	3,455.2	1.15	0.32	-1.11
12,371.0	89.55	90.93	7,270.5	-1,389.4	3,374.1	3,547.1	2.02	-0.68	1.90
12,464.0	90.45	89.50	7,270.5	-1,389.8	3,467.1	3,639.1	1.82	0.97	-1.54
12,558.0	89.94	89.34	7,270.2	-1,388.8	3,561.1	3,731.8	0.57	-0.54	-0.17
12,653.0	89.80	89.65	7,270.4	-1,388.0	3,656.1	3,825.6	0.36	-0.15	0.33
12,747.0	90.00	88.93	7,270.5	-1,386.8	3,750.1	3,918.3	0.79	0.21	-0.77
12,841.0	89.89	90.82	7,270.6	-1,386.6	3,844.1	4,011.1	2.01	-0.12	2.01
12,936.0	90.22	89.15	7,270.5	-1,386.6	3,939.1	4,105.0	1.79	0.35	-1.76
13,030.0	90.32	89.71	7,270.1	-1,385.7	4,033.1	4,197.7	0.61	0.11	0.60
13,124.0	90.19	90.22	7,269.7	-1,385.6	4,127.1	4,290.6	0.56	-0.14	0.54
13,218.0	89.78	90.07	7,269.7	-1,385.9	4,221.1	4,383.5	0.46	-0.44	-0.16
13,312.0	89.75	90.54	7,270.1	-1,386.4	4,315.1	4,476.5	0.50	-0.03	0.50
13,407.0	89.71	90.50	7,270.5	-1,387.2	4,410.0	4,570.5	0.06	-0.04	-0.04
13,501.0	89.79	90.57	7,270.9	-1,388.1	4,504.0	4,663.5	0.11	0.09	0.07
13,596.0	90.23	88.87	7,270.9	-1,387.6	4,599.0	4,757.3	1.85	0.46	-1.79
13,690.0	90.14	89.44	7,270.6	-1,386.2	4,693.0	4,850.0	0.61	-0.10	0.61
13,784.0	89.91	89.16	7,270.6	-1,385.1	4,787.0	4,942.7	0.39	-0.24	-0.30
13,878.0	89.85	90.20	7,270.8	-1,384.6	4,881.0	5,035.5	1.11	-0.06	1.11
13,973.0	90.11	89.24	7,270.8	-1,384.1	4,976.0	5,129.3	1.05	0.27	-1.01
14,067.0	89.88	89.49	7,270.8	-1,383.1	5,070.0	5,222.1	0.36	-0.24	0.27
14,162.0	90.36	89.53	7,270.6	-1,382.2	5,165.0	5,315.8	0.51	0.51	0.04
14,257.0	89.91	89.44	7,270.4	-1,381.4	5,260.0	5,409.5	0.48	-0.47	-0.09
14,351.0	90.05	90.51	7,270.4	-1,381.4	5,354.0	5,502.4	1.15	0.15	1.14
14,445.0	89.71	90.89	7,270.6	-1,382.5	5,448.0	5,595.5	0.54	-0.36	0.40
14,540.0	90.01	89.83	7,270.9	-1,383.1	5,543.0	5,689.5	1.16	0.32	-1.12
14,634.0	89.75	88.92	7,271.0	-1,382.1	5,637.0	5,782.2	1.01	-0.28	-0.97
14,822.0	90.29	89.82	7,271.0	-1,380.0	5,825.0	5,967.6	0.56	0.29	0.48
14,916.0	90.41	89.19	7,270.4	-1,379.2	5,919.0	6,060.4	0.68	0.13	-0.67
15,010.0	89.97	90.20	7,270.1	-1,378.7	6,013.0	6,153.2	1.17	-0.47	1.07
15,104.0	89.91	89.99	7,270.2	-1,378.8	6,107.0	6,246.1	0.23	-0.06	-0.22
15,199.0	89.71	90.02	7,270.5	-1,378.9	6,202.0	6,340.0	0.21	-0.21	0.03
15,293.0	90.28	90.24	7,270.5	-1,379.1	6,296.0	6,432.9	0.65	0.61	0.23
15,387.0	90.68	89.25	7,269.7	-1,378.7	6,389.9	6,525.7	1.14	0.43	-1.05
15,481.0	88.64	89.61	7,270.3	-1,377.7	6,483.9	6,618.5	2.20	-2.17	0.38
15,575.0	88.73	89.20	7,272.4	-1,376.7	6,577.9	6,711.2	0.45	0.10	-0.44
15,669.0	88.80	88.78	7,274.5	-1,375.1	6,671.9	6,803.8	0.45	0.07	-0.45
15,763.0	89.83	88.77	7,275.6	-1,373.1	6,765.8	6,896.3	1.10	1.10	-0.01
15,857.0	89.74	88.85	7,275.9	-1,371.1	6,859.8	6,988.9	0.13	-0.10	0.09
15,951.0	90.00	89.61	7,276.2	-1,369.9	6,953.8	7,081.6	0.85	0.28	0.81
16,140.0	89.58	90.22	7,276.9	-1,369.6	7,142.8	7,268.3	0.39	-0.22	0.32
16,233.0	89.79	90.29	7,277.4	-1,370.0	7,235.8	7,360.3	0.24	0.23	0.08
16,327.0	89.65	90.32	7,277.8	-1,370.5	7,329.8	7,453.2	0.15	-0.15	0.03
16,422.0	88.93	89.62	7,279.0	-1,370.4	7,424.8	7,547.1	1.06	-0.76	-0.74

Company:	PDC Energy Inc. DJ Basin	Local Co-ordinate Reference:	Well Bost Farm 39N-8C-L
Project:	SEC.7-T5N-R66W	TVD Reference:	WELL @ 4902ft (Patterson 272 - RKB 28')
Site:	Bost Farms 5-7 Pad SEC.7-T5N-R66W	MD Reference:	WELL @ 4902ft (Patterson 272 - RKB 28')
Well:	Bost Farm 39N-8C-L	North Reference:	True
Wellbore:	Bost Farm 39N-8C-L Wellbore #1	Survey Calculation Method:	Minimum Curvature
Design:	39N-8C-L_Final Surveys	Database:	US_EDM

Survey										
Measured Depth (ft)	Inclination (°)	Azimuth (°)	Vertical Depth (ft)	+N/-S (ft)	+E/-W (ft)	Vertical Section (ft)	Dogleg Rate (°/100usft)	Build Rate (°/100usft)	Turn Rate (°/100usft)	
16,516.0	88.98	90.02	7,280.7	-1,370.1	7,518.8	7,639.9	0.43	0.05	0.43	
16,610.0	89.45	89.11	7,282.0	-1,369.4	7,612.8	7,732.7	1.09	0.50	-0.97	
16,704.0	90.95	90.34	7,281.7	-1,369.0	7,706.8	7,825.5	2.06	1.60	1.31	
16,798.0	91.48	89.72	7,279.7	-1,369.0	7,800.7	7,918.4	0.87	0.56	-0.66	
16,892.0	92.54	88.55	7,276.4	-1,367.6	7,894.7	8,011.0	1.68	1.13	-1.24	
16,986.0	92.59	87.88	7,272.2	-1,364.7	7,988.5	8,103.3	0.71	0.05	-0.71	
17,080.0	92.08	89.24	7,268.4	-1,362.3	8,082.4	8,195.7	1.54	-0.54	1.45	
17,174.0	94.06	92.17	7,263.3	-1,363.5	8,176.3	8,288.6	3.76	2.11	3.12	
17,264.0	91.93	91.99	7,258.6	-1,366.7	8,266.1	8,377.9	2.38	-2.37	-0.20	
17,360.0	89.85	92.21	7,257.1	-1,370.3	8,362.0	8,473.2	2.18	-2.17	0.23	
17,454.0	89.02	91.07	7,258.0	-1,373.0	8,455.9	8,566.5	1.50	-0.88	-1.21	
17,548.0	89.14	90.94	7,259.6	-1,374.6	8,549.9	8,659.6	0.19	0.13	-0.14	
17,642.0	89.01	92.08	7,261.1	-1,377.1	8,643.9	8,752.8	1.22	-0.14	1.21	
17,831.0	88.94	91.78	7,264.5	-1,383.4	8,832.7	8,940.4	0.16	-0.04	-0.16	
17,911.0	89.10	91.50	7,265.8	-1,385.7	8,912.7	9,019.8	0.40	0.20	-0.35	
17,941.0	89.10	91.50	7,266.3	-1,386.5	8,942.7	9,049.5	0.00	0.00	0.00	
BHL (1445' FSL, 464.3' FEL)										

Formations						
Measured Depth (ft)	Vertical Depth (ft)	Name	Lithology	Dip (°)	Dip Direction (°)	
4,510.2	4,288.5	Sussex				
5,205.9	4,932.5	Shannon				
7,322.0	6,900.5	Sharon Springs				
7,363.8	6,933.5	Niobrara A				
7,574.7	7,068.5	Niobrara B				
7,696.5	7,126.5	Niobrara C				

Survey Annotations					
Measured Depth (ft)	Vertical Depth (ft)	Local Coordinates		Comment	
		+N/-S (ft)	+E/-W (ft)		
7,976.1	7,195.8	-1,404.1	-1,019.0	LP (1433.5' FSL, 150' FWL)	
17,941.0	7,266.3	-1,386.5	8,942.7	BHL (1445' FSL, 464.3' FEL)	