

Cement Post Job Report

Client: PDC Energy

Well Name: Bost Farm 39N-8C-L

API #: 05-123-51451-00

Job Date: May 1, 2022

Job Type: New Well - 5.5" Production String

Cement Company & Contact: EXERO Well Integrity -
Cheve Meyer 720-239-3819



ROCK SOLID
WELL INTEGRITY
SOLUTIONS

Treatment Report

Client PDC		Well Name & No. Bost Farm 39N-8C-L		Rig Name & No. Patterson 272		Date 5/1/2022	
Job Type Production		Wellhead Connection 5 1/2" HP Cement Head		Casing/Tubing Thread Type Buttress		BHST Deg	BHCT Deg
Well MD (ft) 17941		Well TVD (ft) 7266		Deg Dev. 90	No. of Stages 1	Tapered String No	Max. PSI. 7000
Packer/Retainer/DV Tool Depth		Top of Perfs NA		Bottom of Perfs NA		Number of Holes NA	

Pipe/String Details

String	Type of Casing, Tub, DP	OD"	Wt-lb/Ft	ID"	OH Size"	% Excess Lead	% Excess Tail	Depth (ft)
Surface	Casing	9.625	36					1658
Production	Casing	5.5	20	4.778	8.5	0	0	17928

Pre-Job Mud and Well Conditions

Mud Type	OBM	Pipe Rotation		Circulation Data			
Mud wt. ppg	10.5	Rotate Y,N	No	Time Circulated (hrs)	3		
Flow Temp		Rate	NA	Circulation Rate (bpm)	9.7		
Vis. Sec/qt		Torque Val.	NA	Full Circulation (Y,N, Partial)	Yes		
PV (cP)		Rotate Time	NA	Gas Present (Y,N)	Yes	Units	9000
Yield Pt		Pipe Reciprocation		Centralizers/Plugs			
10 sec gel		Recip Y,N	No	Quantity & Type	2 BOTTOM, 1 TOP		
10 min gel		Stroke (ft)	NA	Top Plug/Type	PDC Provided		
30 min gel		Recip time	NA	Bottom Plug/Type/Burst psi	PDC Provided		

Prejob Calculated Materials, Volumes, & Rates

Preflush & Spacers		Stage 1 Lead: Class G		Stage 1 Tail: Class G		Stage 2 Lead: NA		Stage 2 Tail: NA		Displacement	
Spacer 1	Spacer	Density	12.9	Density	13.7	Density		Density		Fluid Type	Water
Density	12	Sacks	1276	Sacks	1552	Sacks		Sacks		Density	8.33
Volume	140	Vol/bbls	256.8	Vol/bbls	378.7	Vol/bbls	0.0	Vol/bbls	0.0	Volume (bbls)	398
Rate	10	Rate	11	Rate	11	Rate		Rate		Rate (bpm)	11
Spacer 2		Yield	1.13	Yield	1.37	Yield		Yield		Clay Stabilizer?	No
Density		Gal/Sk	3.9	Gal/Sk	6.63	Gal/Sk		Gal/Sk		Biocide/Inhibitor?	Yes
Volume		% Excess	0	% Excess	0	% Excess		% Excess		Slow Rate @ bbl	380
Rate		Lead Top	2377	Tail Top	8651	Lead Top		Tail Top		Bump (psi)	3700
H2O Req.	140	H2O Req.	118	H2O Req.	245	H2O Req.	0	H2O Req.	0	H2O Req.	398

Post Job Details, Final Volumes & Pressures

Job Water Requirements (job+ washup+20% safety factor)				1082		bbls	
Actual Displacement (bbls)	398				Spacer to Surface	Yes	
Bump Plug?	YES				Spacer Volume To Pit (bbls)	66	
Final Bump Pressure	3700				Cement To Surface (Y,N)	No	
Full Returns Thru Job	Yes				Cement Volume To Surface	0	
Vol/Time When Circ. Loss	NA				Surface Top Out?	No	
Vol/Time when Loss Stops	NA				Top Out Volume (bbls)	NA	

Additional Post Job Notes



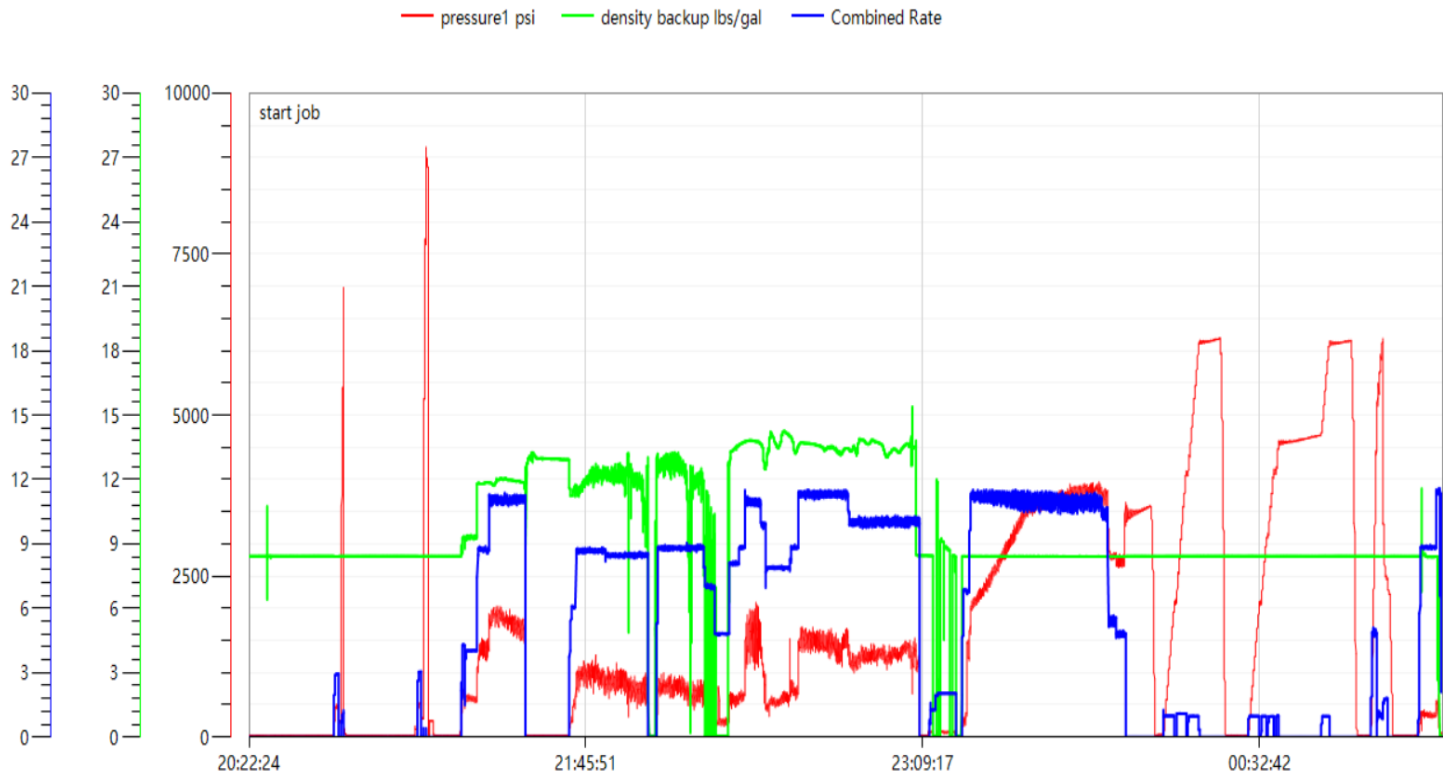
ROCK SOLID
WELL INTEGRITY
SOLUTIONS

Job Treatment Log

Client	Well Name & Number		Rig Name		Date	Ambient Conditions (Temperature / Humidity / Air Pressure)	
PDC	Bost Farm 39N-8C-L		Patterson 272		5/1/2022	49 Deg F / 77% / 24.90 in	
Date (MM/DD/YY)	Time (HH:MM)	Density (ppg)	Rate (bpm)	Volume (bbl)	Cumulative Volume (bbl)	Pressure	Treatment Details
5/1/2022	8:00						CALL OUT FOR A REQUESTED TIME ON LOCATION OF 16:00
5/1/2022	14:00						ARRIVED ON LOCATION
5/1/2022	17:30						SPOT EQUIPMENT AND RIG UP
5/1/2022	18:00						WAITED ON RIG TO COMPLETE CIRCULATION
5/1/2022	20:15						SAFETY MEETING
5/1/2022	20:30						RIG UP FLOOR
5/1/2022	20:30						DROPPED BOTTOM PLUG
5/1/2022	21:11	8.33	4.00	3.0	3.0	400.0	FILL LINES
5/1/2022	21:12					8800.0	TEST LINES, PRESSURE TEST PASSED
5/1/2022	21:22	12.00	10.00	140.0	140.0	1200.0	PUMPED 140 BBLS OF 12# SPACER
5/1/2022	21:35						SHUT DOWN
5/1/2022	21:41						DROPPED BOTTOM PLUG
5/1/2022	21:49	12.90	10.00	257.0	257.0	1100.0	PUMPED 257 BBLS OF 12.9#, 1.13Y, 3.9 GAL/SK LEAD CEMENT
5/1/2022	22:30	13.70	11.00	379.0	379.0	650.0	PUMPED 379 BBLS OF 13.7#, 1.37Y, 6.63 GAL/SK TAIL CEMENT
5/1/2022	23:16	8.33	11.00	8.0	8.0	500.0	PUMPED 8 BBLS OF SUGAR WATER
5/1/2022	23:17	8.33	5.00	25.0	25.0	0.0	SHUT DOWN/ WASH PUMPS AND LINES
5/1/2022	23:18						DROPPED BOTTOM PLUG
5/1/2022	23:26	8.33	8.00	10.0	398.0	1000.0	STARTED DISPLACEMENT
5/1/2022	23:32	8.33	11.00	50.0	398.0	2400.0	FRESH WATER DISPLACEMENT
5/1/2022	23:37	8.33	11.00	100.0	398.0	2900.0	FRESH WATER DISPLACEMENT
5/1/2022	23:42	8.33	11.00	150.0	398.0	3500.0	FRESH WATER DISPLACEMENT
5/1/2022	23:47	8.33	11.00	200.0	398.0	3700.0	FRESH WATER DISPLACEMENT
5/1/2022	23:51	8.33	11.00	250.0	398.0	3650.0	FRESH WATER DISPLACEMENT
5/1/2022	23:56	8.33	11.00	300.0	398.0	3650.0	FRESH WATER DISPLACEMENT
5/2/2022	0:00	8.33	10.50	350.0	398.0	3940.0	FRESH WATER DISPLACEMENT
5/2/2022	0:07	8.33	4.00	398.0	398.0	3700.0	BUMPED PLUG ON CALCULATED DISPLACEMENT
5/2/2022	0:14						CHECKED FLOATS RECEIVED 5 BBLS BACK, FLOATS WERE HOLDING
5/2/2022	0:17						START SETTING PACKER/ SHIFT WET SHOE
5/2/2022	1:12					6120.0	SHIFTED WET SHOE AT 6120 PSI
5/2/2022	1:12						PUMPED 2 BBL WET SHOE, CHECKED FLOATS AND RECEIVED 2 BBLS BACK FLOATS ARE HOLDING
5/2/2022	1:25						RIG DOWN
5/2/2022	1:45						DEPART LOCATION

Bost Farm 39N-8C-L Pump Chart – Pressure / Rate / Density

Chart Report





Centralizer Depths

Well Name: Bost Farm 39N-8C-L

Production, Set Depth: 17,928.0ftKB

API 05123514510000		Surface Legal Location SWNW 7 5N 66W		Field Name Wattenberg		State CO		Well Configuration Type Horizontal	
Ground Elevation (ft) 4,874.00	Original KB 4,902.00	Elevation (ft) 28.00	KB-Ground Distance (ft) 28.00	Spud Date 4/27/2022 06:00	Rig Release Date 5/2/2022 06:00	On Production Date		Abandon Date	

Casing Run Tally

Run #	Ref #	Item Des	OD (in)	Wt (lb/ft)	Grade	Run?	Len (ft)	Centralized?	Ext Jwlry	Connections	Top (ftKB)	Cum Len (ft)
7	1	Casing Joints	5 1/2	20.00	P-110	Yes	45.12	Yes			17,844.5	83.55
9	3	Casing Joints	5 1/2	20.00	P-110	Yes	45.12	Yes			17,754.0	174.01
11	5	Casing Joints	5 1/2	20.00	P-110	Yes	45.11	Yes			17,663.8	264.23
13	7	Casing Joints	5 1/2	20.00	P-110	Yes	45.50	Yes			17,573.6	354.38
15	9	Casing Joints	5 1/2	20.00	P-110	Yes	45.02	Yes			17,483.5	444.51
17		Marker Joint A	5 1/2	20.00	P-110	Yes	10.75	Yes			17,427.6	500.38
19	12	Casing Joints	5 1/2	20.00	P-110	Yes	44.02	Yes			17,338.5	589.51
21	14	Casing Joints	5 1/2	20.00	P-110	Yes	45.13	Yes			17,248.3	679.74
23	16	Casing Joints	5 1/2	20.00	P-110	Yes	45.08	Yes			17,158.1	769.94
25	18	Casing Joints	5 1/2	20.00	P-110	Yes	44.60	Yes			17,068.4	859.61
27	20	Casing Joints	5 1/2	20.00	P-110	Yes	40.25	Yes			16,983.0	944.97
29	22	Casing Joints	5 1/2	20.00	P-110	Yes	45.13	Yes			16,892.3	1,035.72
31	24	Casing Joints	5 1/2	20.00	P-110	Yes	45.12	Yes			16,801.8	1,126.24
33	26	Casing Joints	5 1/2	20.00	P-110	Yes	45.12	Yes			16,714.9	1,213.08
35	28	Casing Joints	5 1/2	20.00	P-110	Yes	45.12	Yes			16,624.7	1,303.30
37	30	Casing Joints	5 1/2	20.00	P-110	Yes	45.11	Yes			16,534.5	1,393.51
39	32	Casing Joints	5 1/2	20.00	P-110	Yes	45.14	Yes			16,444.3	1,483.73
41	34	Casing Joints	5 1/2	20.00	P-110	Yes	45.10	Yes			16,354.1	1,573.93
43	36	Casing Joints	5 1/2	20.00	P-110	Yes	45.12	Yes			16,263.8	1,664.17
45	38	Casing Joints	5 1/2	20.00	P-110	Yes	45.10	Yes			16,173.6	1,754.39
47	40	Casing Joints	5 1/2	20.00	P-110	Yes	44.65	Yes			16,083.9	1,844.14
49	42	Casing Joints	5 1/2	20.00	P-110	Yes	45.12	Yes			15,993.6	1,934.38
51	44	Casing Joints	5 1/2	20.00	P-110	Yes	45.12	Yes			15,903.4	2,024.64
53	46	Casing Joints	5 1/2	20.00	P-110	Yes	45.12	Yes			15,813.1	2,114.86
55	48	Casing Joints	5 1/2	20.00	P-110	Yes	45.06	Yes			15,723.0	2,204.98
57	50	Casing Joints	5 1/2	20.00	P-110	Yes	40.46	Yes			15,644.9	2,283.11
59	52	Casing Joints	5 1/2	20.00	P-110	Yes	45.12	Yes			15,554.7	2,373.35
61	54	Casing Joints	5 1/2	20.00	P-110	Yes	45.12	Yes			15,464.4	2,463.58
63	56	Casing Joints	5 1/2	20.00	P-110	Yes	44.65	Yes			15,374.7	2,553.34
65	58	Casing Joints	5 1/2	20.00	P-110	Yes	45.10	Yes			15,284.5	2,643.55
67	60	Casing Joints	5 1/2	20.00	P-110	Yes	45.12	Yes			15,194.2	2,733.77



Centralizer Depths

Well Name: Bost Farm 39N-8C-L

Production, Set Depth: 17,928.0ftKB

API 05123514510000		Surface Legal Location SWNW 7 5N 66W		Field Name Wattenberg		State CO		Well Configuration Type Horizontal	
Ground Elevation (ft) 4,874.00	Original KB 4,902.00	Elevation (ft) 28.00	KB-Ground Distance (ft) 28.00	Spud Date 4/27/2022 06:00	Rig Release Date 5/2/2022 06:00	On Production Date		Abandon Date	

Casing Run Tally

Run #	Ref #	Item Des	OD (in)	Wt (lb/ft)	Grade	Run?	Len (ft)	Centralized?	Ext Jw/ry	Connections	Top (ftKB)	Cum Len (ft)
69	62	Casing Joints	5 1/2	20.00	P-110	Yes	45.08	Yes			15,104.0	2,823.96
71	64	Casing Joints	5 1/2	20.00	P-110	Yes	39.30	Yes			15,019.6	2,908.36
73	66	Casing Joints	5 1/2	20.00	P-110	Yes	42.62	Yes			14,938.5	2,989.54
75	68	Casing Joints	5 1/2	20.00	P-110	Yes	45.13	Yes			14,849.0	3,079.02
77	70	Casing Joints	5 1/2	20.00	P-110	Yes	45.12	Yes			14,758.8	3,169.24
79	72	Casing Joints	5 1/2	20.00	P-110	Yes	45.14	Yes			14,668.5	3,259.50
81	74	Casing Joints	5 1/2	20.00	P-110	Yes	45.12	Yes			14,578.8	3,349.24
83	76	Casing Joints	5 1/2	20.00	P-110	Yes	45.35	Yes			14,488.3	3,439.71
85	78	Casing Joints	5 1/2	20.00	P-110	Yes	45.11	Yes			14,398.6	3,529.38
87	80	Casing Joints	5 1/2	20.00	P-110	Yes	39.65	Yes			14,313.9	3,614.14
89	82	Casing Joints	5 1/2	20.00	P-110	Yes	45.11	Yes			14,223.7	3,704.35
91	84	Casing Joints	5 1/2	20.00	P-110	Yes	45.10	Yes			14,134.0	3,794.05
93	86	Casing Joints	5 1/2	20.00	P-110	Yes	45.12	Yes			14,044.2	3,883.77
95	88	Casing Joints	5 1/2	20.00	P-110	Yes	45.11	Yes			13,954.0	3,973.98
97	90	Casing Joints	5 1/2	20.00	P-110	Yes	45.10	Yes			13,863.8	4,064.18
99	92	Casing Joints	5 1/2	20.00	P-110	Yes	45.12	Yes			13,779.9	4,148.11
101	94	Casing Joints	5 1/2	20.00	P-110	Yes	45.10	Yes			13,689.7	4,238.33
103	96	Casing Joints	5 1/2	20.00	P-110	Yes	45.10	Yes			13,599.5	4,328.55
105	98	Casing Joints	5 1/2	20.00	P-110	Yes	45.11	Yes			13,510.2	4,417.78
107	100	Casing Joints	5 1/2	20.00	P-110	Yes	44.60	Yes			13,420.5	4,507.50
109	102	Casing Joints	5 1/2	20.00	P-110	Yes	47.20	Yes			13,326.0	4,601.99
111	104	Casing Joints	5 1/2	20.00	P-110	Yes	45.12	Yes			13,234.7	4,693.26
113	106	Casing Joints	5 1/2	20.00	P-110	Yes	47.30	Yes			13,142.3	4,785.67
115	108	Casing Joints	5 1/2	20.00	P-110	Yes	46.76	Yes			13,048.3	4,879.73
117	110	Casing Joints	5 1/2	20.00	P-110	Yes	47.29	Yes			12,953.7	4,974.33
120	112	Casing Joints	5 1/2	20.00	P-110	Yes	47.22	Yes			12,847.3	5,080.70
123	115	Casing Joints	5 1/2	20.00	P-110	Yes	47.35	Yes			12,705.4	5,222.59
125	117	Casing Joints	5 1/2	20.00	P-110	Yes	44.85	Yes			12,613.9	5,314.14
127	119	Casing Joints	5 1/2	20.00	P-110	Yes	47.38	Yes			12,519.2	5,408.82
129	121	Casing Joints	5 1/2	20.00	P-110	Yes	44.90	Yes			12,427.0	5,501.04
131	123	Casing Joints	5 1/2	20.00	P-110	Yes	44.75	Yes			12,335.5	5,592.54



Centralizer Depths

Well Name: Bost Farm 39N-8C-L

Production, Set Depth: 17,928.0ftKB

API 05123514510000		Surface Legal Location SWNW 7 5N 66W		Field Name Wattenberg		State CO		Well Configuration Type Horizontal	
Ground Elevation (ft) 4,874.00	Original KB 4,902.00	Elevation (ft) 28.00	KB-Ground Distance (ft) 28.00	Spud Date 4/27/2022 06:00	Rig Release Date 5/2/2022 06:00	On Production Date		Abandon Date	

Casing Run Tally

Run #	Ref #	Item Des	OD (in)	Wt (lb/ft)	Grade	Run?	Len (ft)	Centralized?	Ext Jwlry	Connections	Top (ftKB)	Cum Len (ft)
133	125	Casing Joints	5 1/2	20.00	P-110	Yes	46.55	Yes			12,242.3	5,685.68
135	127	Casing Joints	5 1/2	20.00	P-110	Yes	44.26	Yes			12,151.3	5,776.73
137	129	Casing Joints	5 1/2	20.00	P-110	Yes	46.63	Yes			12,057.9	5,870.15
139	131	Casing Joints	5 1/2	20.00	P-110	Yes	46.65	Yes			11,964.7	5,963.35
141	133	Casing Joints	5 1/2	20.00	P-110	Yes	46.76	Yes			11,873.2	6,054.79
143	135	Casing Joints	5 1/2	20.00	P-110	Yes	46.65	Yes			11,779.8	6,148.24
145	137	Casing Joints	5 1/2	20.00	P-110	Yes	47.32	Yes			11,685.7	6,242.30
147	139	Casing Joints	5 1/2	20.00	P-110	Yes	46.70	Yes			11,592.4	6,335.59
149	141	Casing Joints	5 1/2	20.00	P-110	Yes	46.70	Yes			11,498.9	6,429.09
151	143	Casing Joints	5 1/2	20.00	P-110	Yes	46.79	Yes			11,405.3	6,522.69
153	145	Casing Joints	5 1/2	20.00	P-110	Yes	46.78	Yes			11,311.7	6,616.26
155	147	Casing Joints	5 1/2	20.00	P-110	Yes	46.58	Yes			11,218.4	6,709.63
157	149	Casing Joints	5 1/2	20.00	P-110	Yes	46.81	Yes			11,124.8	6,803.24
159	151	Casing Joints	5 1/2	20.00	P-110	Yes	45.12	Yes			11,033.0	6,895.01
161	153	Casing Joints	5 1/2	20.00	P-110	Yes	45.12	Yes			10,950.7	6,977.34
163	155	Casing Joints	5 1/2	20.00	P-110	Yes	45.12	Yes			10,865.3	7,062.71
165	157	Casing Joints	5 1/2	20.00	P-110	Yes	45.10	Yes			10,776.6	7,151.37
167	159	Casing Joints	5 1/2	20.00	P-110	Yes	45.08	Yes			10,686.5	7,241.50
169	161	Casing Joints	5 1/2	20.00	P-110	Yes	45.12	Yes			10,596.3	7,331.69
171	163	Casing Joints	5 1/2	20.00	P-110	Yes	45.61	Yes			10,505.6	7,422.42
173	165	Casing Joints	5 1/2	20.00	P-110	Yes	45.12	Yes			10,415.3	7,512.66
175	167	Casing Joints	5 1/2	20.00	P-110	Yes	38.23	Yes			10,332.0	7,595.97
177	169	Casing Joints	5 1/2	20.00	P-110	Yes	38.63	Yes			10,248.7	7,679.30
179	171	Casing Joints	5 1/2	20.00	P-110	Yes	45.09	Yes			10,158.5	7,769.49
181	173	Casing Joints	5 1/2	20.00	P-110	Yes	42.63	Yes			10,070.8	7,857.18
183	175	Casing Joints	5 1/2	20.00	P-110	Yes	45.08	Yes			9,980.7	7,947.32
185	177	Casing Joints	5 1/2	20.00	P-110	Yes	45.45	Yes			9,890.2	8,037.85
187	179	Casing Joints	5 1/2	20.00	P-110	Yes	45.08	Yes			9,800.0	8,128.01
189	181	Casing Joints	5 1/2	20.00	P-110	Yes	45.10	Yes			9,709.8	8,218.16
191	183	Casing Joints	5 1/2	20.00	P-110	Yes	45.06	Yes			9,619.7	8,308.28
193	185	Casing Joints	5 1/2	20.00	P-110	Yes	45.05	Yes			9,529.6	8,398.39



Centralizer Depths

Well Name: Bost Farm 39N-8C-L

Production, Set Depth: 17,928.0ftKB

API 05123514510000		Surface Legal Location SWNW 7 5N 66W		Field Name Wattenberg		State CO		Well Configuration Type Horizontal					
Ground Elevation (ft) 4,874.00		Original KB Elevation (ft) 4,902.00		KB-Ground Distance (ft) 28.00		Spud Date 4/27/2022 06:00		Rig Release Date 5/2/2022 06:00		On Production Date		Abandon Date	

Casing Run Tally

Run #	Ref #	Item Des	OD (in)	Wt (lb/ft)	Grade	Run?	Len (ft)	Centralized?	Ext Jw/ry	Connections	Top (ftKB)	Cum Len (ft)
195	187	Casing Joints	5 1/2	20.00	P-110	Yes	45.08	Yes			9,439.5	8,488.52
197	189	Casing Joints	5 1/2	20.00	P-110	Yes	36.40	Yes			9,365.9	8,562.13
199	191	Casing Joints	5 1/2	20.00	P-110	Yes	44.98	Yes			9,275.8	8,652.18
201	193	Casing Joints	5 1/2	20.00	P-110	Yes	45.08	Yes			9,185.7	8,742.26
203	195	Casing Joints	5 1/2	20.00	P-110	Yes	41.75	Yes			9,098.9	8,829.09
205	197	Casing Joints	5 1/2	20.00	P-110	Yes	45.08	Yes			9,008.8	8,919.25
207	199	Casing Joints	5 1/2	20.00	P-110	Yes	45.07	Yes			8,918.6	9,009.37
209	201	Casing Joints	5 1/2	20.00	P-110	Yes	45.11	Yes			8,828.4	9,099.56
211	203	Casing Joints	5 1/2	20.00	P-110	Yes	45.11	Yes			8,738.3	9,189.75
213	205	Casing Joints	5 1/2	20.00	P-110	Yes	45.12	Yes			8,648.0	9,279.99
215	207	Casing Joints	5 1/2	20.00	P-110	Yes	45.10	Yes			8,557.8	9,370.20
217	209	Casing Joints	5 1/2	20.00	P-110	Yes	45.10	Yes			8,467.6	9,460.40
219	211	Casing Joints	5 1/2	20.00	P-110	Yes	45.11	Yes			8,377.9	9,550.11
221	213	Casing Joints	5 1/2	20.00	P-110	Yes	45.11	Yes			8,287.7	9,640.33
223	215	Casing Joints	5 1/2	20.00	P-110	Yes	38.26	Yes			8,204.4	9,723.59
225	217	Casing Joints	5 1/2	20.00	P-110	Yes	45.08	Yes			8,114.3	9,813.73
227	219	Casing Joints	5 1/2	20.00	P-110	Yes	45.07	Yes			8,024.1	9,903.92
230	221	Casing Joints	5 1/2	20.00	P-110	Yes	45.05	Yes			7,922.4	10,005.64
232	223	Casing Joints	5 1/2	20.00	P-110	Yes	45.07	Yes			7,832.2	10,095.77
234	225	Casing Joints	5 1/2	20.00	P-110	Yes	45.10	Yes			7,742.1	10,185.95
236	227	Casing Joints	5 1/2	20.00	P-110	Yes	45.08	Yes			7,651.9	10,276.11
238	229	Casing Joints	5 1/2	20.00	P-110	Yes	45.08	Yes			7,561.7	10,366.31
240	231	Casing Joints	5 1/2	20.00	P-110	Yes	45.05	Yes			7,471.6	10,456.41
241	232	Casing Joints	5 1/2	20.00	P-110	Yes	45.12	Yes			7,426.5	10,501.53
242	233	Casing Joints	5 1/2	20.00	P-110	Yes	44.18	Yes			7,382.3	10,545.71
243	234	Casing Joints	5 1/2	20.00	P-110	Yes	45.12	Yes			7,337.2	10,590.83
244	235	Casing Joints	5 1/2	20.00	P-110	Yes	45.14	Yes			7,292.0	10,635.97
245	236	Casing Joints	5 1/2	20.00	P-110	Yes	45.02	Yes			7,247.0	10,680.99
246	237	Casing Joints	5 1/2	20.00	P-110	Yes	44.91	Yes			7,202.1	10,725.90
247	238	Casing Joints	5 1/2	20.00	P-110	Yes	45.05	Yes			7,157.1	10,770.95
248	239	Casing Joints	5 1/2	20.00	P-110	Yes	45.12	Yes			7,111.9	10,816.07



Centralizer Depths

Well Name: Bost Farm 39N-8C-L

Production, Set Depth: 17,928.0ftKB

API 05123514510000		Surface Legal Location SWNW 7 5N 66W		Field Name Wattenberg		State CO		Well Configuration Type Horizontal	
Ground Elevation (ft) 4,874.00	Original KB 4,902.00	Elevation (ft) 28.00	KB-Ground Distance (ft) 28.00	Spud Date 4/27/2022 06:00	Rig Release Date 5/2/2022 06:00	On Production Date		Abandon Date	

Casing Run Tally

Run #	Ref #	Item Des	OD (in)	Wt (lb/ft)	Grade	Run?	Len (ft)	Centralized?	Ext Jw/ry	Connections	Top (ftKB)	Cum Len (ft)
249	240	Casing Joints	5 1/2	20.00	P-110	Yes	45.08	Yes			7,066.9	10,861.15
250	241	Casing Joints	5 1/2	20.00	P-110	Yes	45.12	Yes			7,021.7	10,906.27
251	242	Casing Joints	5 1/2	20.00	P-110	Yes	45.12	Yes			6,976.6	10,951.39
252	243	Casing Joints	5 1/2	20.00	P-110	Yes	45.13	Yes			6,931.5	10,996.52
253	244	Casing Joints	5 1/2	20.00	P-110	Yes	45.03	Yes			6,886.5	11,041.55
254	245	Casing Joints	5 1/2	20.00	P-110	Yes	45.10	Yes			6,841.4	11,086.65
255	246	Casing Joints	5 1/2	20.00	P-110	Yes	45.13	Yes			6,796.2	11,131.78
256	247	Casing Joints	5 1/2	20.00	P-110	Yes	45.11	Yes			6,751.1	11,176.89
257	248	Casing Joints	5 1/2	20.00	P-110	Yes	45.12	Yes			6,706.0	11,222.01
258	249	Casing Joints	5 1/2	20.00	P-110	Yes	45.12	Yes			6,660.9	11,267.13
259		Marker Joint D	5 1/2	20.00	P-110	Yes	11.76	Yes			6,649.1	11,278.89
260	250	Casing Joints	5 1/2	20.00	P-110	Yes	45.13	Yes			6,604.0	11,324.02
261	251	Casing Joints	5 1/2	20.00	P-110	Yes	47.31	Yes			6,556.7	11,371.33
262	252	Casing Joints	5 1/2	20.00	P-110	Yes	47.32	Yes			6,509.4	11,418.65
263	253	Casing Joints	5 1/2	20.00	P-110	Yes	47.33	Yes			6,462.0	11,465.98
264	254	Casing Joints	5 1/2	20.00	P-110	Yes	45.14	Yes			6,416.9	11,511.12
265	255	Casing Joints	5 1/2	20.00	P-110	Yes	45.35	Yes			6,371.5	11,556.47
266	256	Casing Joints	5 1/2	20.00	P-110	Yes	47.44	Yes			6,324.1	11,603.91
267	257	Casing Joints	5 1/2	20.00	P-110	Yes	47.31	Yes			6,276.8	11,651.22
268	258	Casing Joints	5 1/2	20.00	P-110	Yes	47.35	Yes			6,229.4	11,698.57
269	259	Casing Joints	5 1/2	20.00	P-110	Yes	47.31	Yes			6,182.1	11,745.88
270	260	Casing Joints	5 1/2	20.00	P-110	Yes	39.13	Yes			6,143.0	11,785.01
271	261	Casing Joints	5 1/2	20.00	P-110	Yes	47.31	Yes			6,095.7	11,832.32
272	262	Casing Joints	5 1/2	20.00	P-110	Yes	46.18	Yes			6,049.5	11,878.50
273	263	Casing Joints	5 1/2	20.00	P-110	Yes	47.34	Yes			6,002.2	11,925.84
274	264	Casing Joints	5 1/2	20.00	P-110	Yes	47.32	Yes			5,954.8	11,973.16
275	265	Casing Joints	5 1/2	20.00	P-110	Yes	46.31	Yes			5,908.5	12,019.47
276	266	Casing Joints	5 1/2	20.00	P-110	Yes	47.31	Yes			5,861.2	12,066.78
277	267	Casing Joints	5 1/2	20.00	P-110	Yes	46.18	Yes			5,815.0	12,112.96
278	268	Casing Joints	5 1/2	20.00	P-110	Yes	47.31	Yes			5,767.7	12,160.27
279	269	Casing Joints	5 1/2	20.00	P-110	Yes	47.32	Yes			5,720.4	12,207.59



Centralizer Depths

Well Name: Bost Farm 39N-8C-L

Production, Set Depth: 17,928.0ftKB

API 05123514510000		Surface Legal Location SWNW 7 5N 66W		Field Name Wattenberg		State CO		Well Configuration Type Horizontal	
Ground Elevation (ft) 4,874.00	Original KB 4,902.00	Elevation (ft) 28.00	KB-Ground Distance (ft) 28.00	Spud Date 4/27/2022 06:00	Rig Release Date 5/2/2022 06:00	On Production Date		Abandon Date	

Casing Run Tally

Run #	Ref #	Item Des	OD (in)	Wt (lb/ft)	Grade	Run?	Len (ft)	Centralized?	Ext Jwlry	Connections	Top (ftKB)	Cum Len (ft)
280	270	Casing Joints	5 1/2	20.00	P-110	Yes	47.31	Yes			5,673.1	12,254.90
281	271	Casing Joints	5 1/2	20.00	P-110	Yes	47.44	Yes			5,625.7	12,302.34
282	272	Casing Joints	5 1/2	20.00	P-110	Yes	47.32	Yes			5,578.3	12,349.66
283	273	Casing Joints	5 1/2	20.00	P-110	Yes	47.32	Yes			5,531.0	12,396.98
284	274	Casing Joints	5 1/2	20.00	P-110	Yes	47.31	Yes			5,483.7	12,444.29
285	275	Casing Joints	5 1/2	20.00	P-110	Yes	47.18	Yes			5,436.5	12,491.47
286	276	Casing Joints	5 1/2	20.00	P-110	Yes	47.45	Yes			5,389.1	12,538.92
287	277	Casing Joints	5 1/2	20.00	P-110	Yes	47.30	Yes			5,341.8	12,586.22
288	278	Casing Joints	5 1/2	20.00	P-110	Yes	46.27	Yes			5,295.5	12,632.49
289	279	Casing Joints	5 1/2	20.00	P-110	Yes	36.90	Yes			5,258.6	12,669.39
290	280	Casing Joints	5 1/2	20.00	P-110	Yes	47.35	Yes			5,211.3	12,716.74
291	281	Casing Joints	5 1/2	20.00	P-110	Yes	47.35	Yes			5,163.9	12,764.09
292	282	Casing Joints	5 1/2	20.00	P-110	Yes	47.33	Yes			5,116.6	12,811.42
293	283	Casing Joints	5 1/2	20.00	P-110	Yes	47.34	Yes			5,069.2	12,858.76
294	284	Casing Joints	5 1/2	20.00	P-110	Yes	47.32	Yes			5,021.9	12,906.08
295	285	Casing Joints	5 1/2	20.00	P-110	Yes	46.25	Yes			4,975.7	12,952.33
296	286	Casing Joints	5 1/2	20.00	P-110	Yes	47.35	Yes			4,928.3	12,999.68
297	287	Casing Joints	5 1/2	20.00	P-110	Yes	47.42	Yes			4,880.9	13,047.10
298	288	Casing Joints	5 1/2	20.00	P-110	Yes	47.42	Yes			4,833.5	13,094.52
299	289	Casing Joints	5 1/2	20.00	P-110	Yes	43.00	Yes			4,790.5	13,137.52
300	290	Casing Joints	5 1/2	20.00	P-110	Yes	47.42	Yes			4,743.1	13,184.94
301	291	Casing Joints	5 1/2	20.00	P-110	Yes	47.34	Yes			4,695.7	13,232.28
302	292	Casing Joints	5 1/2	20.00	P-110	Yes	47.32	Yes			4,648.4	13,279.60
303	293	Casing Joints	5 1/2	20.00	P-110	Yes	47.35	Yes			4,601.1	13,326.95
304	294	Casing Joints	5 1/2	20.00	P-110	Yes	47.30	Yes			4,553.8	13,374.25
305	295	Casing Joints	5 1/2	20.00	P-110	Yes	47.32	Yes			4,506.4	13,421.57
306	296	Casing Joints	5 1/2	20.00	P-110	Yes	47.45	Yes			4,459.0	13,469.02
307	297	Casing Joints	5 1/2	20.00	P-110	Yes	47.32	Yes			4,411.7	13,516.34
308	298	Casing Joints	5 1/2	20.00	P-110	Yes	46.15	Yes			4,365.5	13,562.49
309	299	Casing Joints	5 1/2	20.00	P-110	Yes	45.24	Yes			4,320.3	13,607.73
310	300	Casing Joints	5 1/2	20.00	P-110	Yes	47.35	Yes			4,272.9	13,655.08



Centralizer Depths

Well Name: Bost Farm 39N-8C-L

Production, Set Depth: 17,928.0ftKB

API 05123514510000		Surface Legal Location SWNW 7 5N 66W		Field Name Wattenberg		State CO		Well Configuration Type Horizontal	
Ground Elevation (ft) 4,874.00	Original KB 4,902.00	Elevation (ft) 28.00	KB-Ground Distance (ft) 28.00	Spud Date 4/27/2022 06:00	Rig Release Date 5/2/2022 06:00	On Production Date		Abandon Date	

Casing Run Tally

Run #	Ref #	Item Des	OD (in)	Wt (lb/ft)	Grade	Run?	Len (ft)	Centralized?	Ext Jwlry	Connections	Top (ftKB)	Cum Len (ft)
311	301	Casing Joints	5 1/2	20.00	P-110	Yes	46.78	Yes			4,226.1	13,701.86
312	302	Casing Joints	5 1/2	20.00	P-110	Yes	46.74	Yes			4,179.4	13,748.60
313	303	Casing Joints	5 1/2	20.00	P-110	Yes	46.79	Yes			4,132.6	13,795.39
314	304	Casing Joints	5 1/2	20.00	P-110	Yes	46.74	Yes			4,085.9	13,842.13
315	305	Casing Joints	5 1/2	20.00	P-110	Yes	46.69	Yes			4,039.2	13,888.82
316	306	Casing Joints	5 1/2	20.00	P-110	Yes	46.75	Yes			3,992.4	13,935.57
317	307	Casing Joints	5 1/2	20.00	P-110	Yes	46.80	Yes			3,945.6	13,982.37
318	308	Casing Joints	5 1/2	20.00	P-110	Yes	46.74	Yes			3,898.9	14,029.11
319	309	Casing Joints	5 1/2	20.00	P-110	Yes	46.71	Yes			3,852.2	14,075.82
320	310	Casing Joints	5 1/2	20.00	P-110	Yes	46.74	Yes			3,805.4	14,122.56
321	311	Casing Joints	5 1/2	20.00	P-110	Yes	46.65	Yes			3,758.8	14,169.21
322	312	Casing Joints	5 1/2	20.00	P-110	Yes	46.72	Yes			3,712.1	14,215.93
323	313	Casing Joints	5 1/2	20.00	P-110	Yes	46.65	Yes			3,665.4	14,262.58
324	314	Casing Joints	5 1/2	20.00	P-110	Yes	46.70	Yes			3,618.7	14,309.28
325	315	Casing Joints	5 1/2	20.00	P-110	Yes	46.78	Yes			3,571.9	14,356.06
326	316	Casing Joints	5 1/2	20.00	P-110	Yes	45.70	Yes			3,526.2	14,401.76
327	317	Casing Joints	5 1/2	20.00	P-110	Yes	46.74	Yes			3,479.5	14,448.50
328	318	Casing Joints	5 1/2	20.00	P-110	Yes	46.75	Yes			3,432.8	14,495.25
329	319	Casing Joints	5 1/2	20.00	P-110	Yes	46.69	Yes			3,386.1	14,541.94
330	320	Casing Joints	5 1/2	20.00	P-110	Yes	46.69	Yes			3,339.4	14,588.63
331	321	Casing Joints	5 1/2	20.00	P-110	Yes	46.77	Yes			3,292.6	14,635.40
332	322	Casing Joints	5 1/2	20.00	P-110	Yes	46.70	Yes			3,245.9	14,682.10
333	323	Casing Joints	5 1/2	20.00	P-110	Yes	46.72	Yes			3,199.2	14,728.82
334	324	Casing Joints	5 1/2	20.00	P-110	Yes	46.71	Yes			3,152.5	14,775.53
335	325	Casing Joints	5 1/2	20.00	P-110	Yes	46.70	Yes			3,105.8	14,822.23
336	326	Casing Joints	5 1/2	20.00	P-110	Yes	46.75	Yes			3,059.0	14,868.98
337	327	Casing Joints	5 1/2	20.00	P-110	Yes	46.78	Yes			3,012.2	14,915.76
338	328	Casing Joints	5 1/2	20.00	P-110	Yes	46.70	Yes			2,965.5	14,962.46
339		External Casing Packer	5 1/2	20.00	P-110	Yes	15.14	Yes			2,950.4	14,977.60
340	329	Casing Joints	5 1/2	20.00	P-110	Yes	46.70	Yes			2,903.7	15,024.30
341	330	Casing Joints	5 1/2	20.00	P-110	Yes	46.78	Yes			2,856.9	15,071.08



Centralizer Depths

Well Name: Bost Farm 39N-8C-L

Production, Set Depth: 17,928.0ftKB

API 05123514510000		Surface Legal Location SWNW 7 5N 66W		Field Name Wattenberg		State CO		Well Configuration Type Horizontal	
Ground Elevation (ft) 4,874.00	Original KB 4,902.00	Elevation (ft) 28.00	KB-Ground Distance (ft) 28.00	Spud Date 4/27/2022 06:00	Rig Release Date 5/2/2022 06:00	On Production Date		Abandon Date	

Casing Run Tally

Run #	Ref #	Item Des	OD (in)	Wt (lb/ft)	Grade	Run?	Len (ft)	Centralized?	Ext Jwlry	Connections	Top (ftKB)	Cum Len (ft)
342	331	Casing Joints	5 1/2	20.00	P-110	Yes	45.63	Yes			2,811.3	15,116.71
343	332	Casing Joints	5 1/2	20.00	P-110	Yes	46.72	Yes			2,764.6	15,163.43
344	333	Casing Joints	5 1/2	20.00	P-110	Yes	46.70	Yes			2,717.9	15,210.13
345	334	Casing Joints	5 1/2	20.00	P-110	Yes	46.77	Yes			2,671.1	15,256.90
346	335	Casing Joints	5 1/2	20.00	P-110	Yes	46.74	Yes			2,624.4	15,303.64
347	336	Casing Joints	5 1/2	20.00	P-110	Yes	45.64	Yes			2,578.7	15,349.28
348	337	Casing Joints	5 1/2	20.00	P-110	Yes	46.70	Yes			2,532.0	15,395.98
349	338	Casing Joints	5 1/2	20.00	P-110	Yes	46.71	Yes			2,485.3	15,442.69
350	339	Casing Joints	5 1/2	20.00	P-110	Yes	46.70	Yes			2,438.6	15,489.39
351	340	Casing Joints	5 1/2	20.00	P-110	Yes	46.71	Yes			2,391.9	15,536.10
352	341	Casing Joints	5 1/2	20.00	P-110	Yes	46.70	Yes			2,345.2	15,582.80
353	342	Casing Joints	5 1/2	20.00	P-110	Yes	46.76	Yes			2,298.4	15,629.56
354	343	Casing Joints	5 1/2	20.00	P-110	Yes	46.76	Yes			2,251.7	15,676.32
355	344	Casing Joints	5 1/2	20.00	P-110	Yes	46.71	Yes			2,205.0	15,723.03
356	345	Casing Joints	5 1/2	20.00	P-110	Yes	46.73	Yes			2,158.2	15,769.76
357	346	Casing Joints	5 1/2	20.00	P-110	Yes	44.90	Yes			2,113.3	15,814.66
358	347	Casing Joints	5 1/2	20.00	P-110	Yes	45.10	Yes			2,068.2	15,859.76
359	348	Casing Joints	5 1/2	20.00	P-110	Yes	46.65	Yes			2,021.6	15,906.41
360	349	Casing Joints	5 1/2	20.00	P-110	Yes	46.69	Yes			1,974.9	15,953.10
361	350	Casing Joints	5 1/2	20.00	P-110	Yes	46.81	Yes			1,928.1	15,999.91
362	351	Casing Joints	5 1/2	20.00	P-110	Yes	45.09	Yes			1,883.0	16,045.00
363	352	Casing Joints	5 1/2	20.00	P-110	Yes	45.06	Yes			1,837.9	16,090.06
364	353	Casing Joints	5 1/2	20.00	P-110	Yes	45.08	Yes			1,792.9	16,135.14
365	354	Casing Joints	5 1/2	20.00	P-110	Yes	45.08	Yes			1,747.8	16,180.22
366	355	Casing Joints	5 1/2	20.00	P-110	Yes	45.08	Yes			1,702.7	16,225.30
367	356	Casing Joints	5 1/2	20.00	P-110	Yes	45.08	Yes			1,657.6	16,270.38
368	357	Casing Joints	5 1/2	20.00	P-110	Yes	45.75	Yes			1,611.9	16,316.13
369	358	Casing Joints	5 1/2	20.00	P-110	Yes	45.08	Yes			1,566.8	16,361.21
370	359	Casing Joints	5 1/2	20.00	P-110	Yes	39.72	Yes			1,527.1	16,400.93
371	360	Casing Joints	5 1/2	20.00	P-110	Yes	45.08	Yes			1,482.0	16,446.01
372	361	Casing Joints	5 1/2	20.00	P-110	Yes	45.10	Yes			1,436.9	16,491.11



Centralizer Depths

Well Name: Bost Farm 39N-8C-L

Production, Set Depth: 17,928.0ftKB

API 05123514510000		Surface Legal Location SWNW 7 5N 66W		Field Name Wattenberg		State CO		Well Configuration Type Horizontal	
Ground Elevation (ft) 4,874.00	Original KB 4,902.00	Elevation (ft) 28.00	KB-Ground Distance (ft) 28.00	Spud Date 4/27/2022 06:00	Rig Release Date 5/2/2022 06:00	On Production Date		Abandon Date	

Casing Run Tally

Run #	Ref #	Item Des	OD (in)	Wt (lb/ft)	Grade	Run?	Len (ft)	Centralized?	Ext Jwlry	Connections	Top (ftKB)	Cum Len (ft)
373	362	Casing Joints	5 1/2	20.00	P-110	Yes	45.08	Yes			1,391.8	16,536.19
374	363	Casing Joints	5 1/2	20.00	P-110	Yes	45.08	Yes			1,346.7	16,581.27
375	364	Casing Joints	5 1/2	20.00	P-110	Yes	45.07	Yes			1,301.7	16,626.34
376	365	Casing Joints	5 1/2	20.00	P-110	Yes	45.08	Yes			1,256.6	16,671.42
377	366	Casing Joints	5 1/2	20.00	P-110	Yes	45.08	Yes			1,211.5	16,716.50
378	367	Casing Joints	5 1/2	20.00	P-110	Yes	44.82	Yes			1,166.7	16,761.32
379	368	Casing Joints	5 1/2	20.00	P-110	Yes	45.07	Yes			1,121.6	16,806.39
380	369	Casing Joints	5 1/2	20.00	P-110	Yes	45.09	Yes			1,076.5	16,851.48
381	370	Casing Joints	5 1/2	20.00	P-110	Yes	45.10	Yes			1,031.4	16,896.58
382	371	Casing Joints	5 1/2	20.00	P-110	Yes	45.10	Yes			986.3	16,941.68
383	372	Casing Joints	5 1/2	20.00	P-110	Yes	45.10	Yes			941.2	16,986.78
384	373	Casing Joints	5 1/2	20.00	P-110	Yes	45.11	Yes			896.1	17,031.89
385	374	Casing Joints	5 1/2	20.00	P-110	Yes	45.07	Yes			851.0	17,076.96
386	375	Casing Joints	5 1/2	20.00	P-110	Yes	45.08	Yes			806.0	17,122.04
387	376	Casing Joints	5 1/2	20.00	P-110	Yes	45.08	Yes			760.9	17,167.12
388	377	Casing Joints	5 1/2	20.00	P-110	Yes	45.10	Yes			715.8	17,212.22
389	378	Casing Joints	5 1/2	20.00	P-110	Yes	45.09	Yes			670.7	17,257.31
390	379	Casing Joints	5 1/2	20.00	P-110	Yes	45.08	Yes			625.6	17,302.39
391	380	Casing Joints	5 1/2	20.00	P-110	Yes	45.10	Yes			580.5	17,347.49
392	381	Casing Joints	5 1/2	20.00	P-110	Yes	44.91	Yes			535.6	17,392.40
393	382	Casing Joints	5 1/2	20.00	P-110	Yes	45.07	Yes			490.5	17,437.47
394	383	Casing Joints	5 1/2	20.00	P-110	Yes	45.08	Yes			445.5	17,482.55
395	384	Casing Joints	5 1/2	20.00	P-110	Yes	45.04	Yes			400.4	17,527.59
396	385	Casing Joints	5 1/2	20.00	P-110	Yes	45.10	Yes			355.3	17,572.69
397	386	Casing Joints	5 1/2	20.00	P-110	Yes	43.30	Yes			312.0	17,615.99
398	387	Casing Joints	5 1/2	20.00	P-110	Yes	45.08	Yes			266.9	17,661.07
399	388	Casing Joints	5 1/2	20.00	P-110	Yes	45.08	Yes			221.9	17,706.15
400	389	Casing Joints	5 1/2	20.00	P-110	Yes	45.09	Yes			176.8	17,751.24
401	390	Casing Joints	5 1/2	20.00	P-110	Yes	45.10	Yes			131.7	17,796.34
402	391	Casing Joints	5 1/2	20.00	P-110	Yes	44.98	Yes			86.7	17,841.32
403	392	Casing Joints	5 1/2	20.00	P-110	Yes	45.07	Yes			41.6	17,886.39



Centralizer Depths

Well Name: Bost Farm 39N-8C-L

Production, Set Depth: 17,928.0ftKB

API 05123514510000		Surface Legal Location SWNW 7 5N 66W		Field Name Wattenberg		State CO		Well Configuration Type Horizontal					
Ground Elevation (ft) 4,874.00		Original KB Elevation (ft) 4,902.00		KB-Ground Distance (ft) 28.00		Spud Date 4/27/2022 06:00		Rig Release Date 5/2/2022 06:00		On Production Date		Abandon Date	

Casing Run Tally

Run #	Ref #	Item Des	OD (in)	Wt (lb/ft)	Grade	Run?	Len (ft)	Centralized?	Ext Jw/ry	Connections	Top (ftKB)	Cum Len (ft)
404	393	Casing Joints	5 1/2	20.00	P-110	Yes	13.11	Yes			28.5	17,899.50