

Company: PDC Energy Inc

Well: Bost Farm 39N-8C-L

Field Name: Wattenberg

Country Name: United States

State Name: Colorado

County Name: Weld

Company: PDC Energy Inc

Well: Bost Farm 39N-8C-L

Field Name: Wattenberg

Country Name: United States

State Name: Colorado

County Name: Weld

Latitude: 40°24'52.715"N

Longitude: 104°49'41.318"W

Spud Date: 26-Apr-2022

API Number: 05-123-51451

Rig Name: Patterson 272

Rig Type: Land rig

Log Interval: 1639.00--17941.00(ft)

Depth Source: Driller's Depth

Job Number: 22CC00111

Print Type: Final Print

Log Measured From: Drill Floor

Drill Floor Elevation:4902.00(ft)

Ground Level Elevation:4874.00(ft)

Permanent Datum:Sea Level

Northing: 1394603.51 (ft)

Easting: 3187076.65(ft)

Coordinate System:Plane, Northern Zone, US Feet

Xbolt GAMMA RAY

1in/100ft Measured Depth

Final Print

Recorded Mode

Schlumberger

Disclaimer

THE USE OF AND RELIANCE UPON THIS RECORDED-DATA BY THE HEREIN NAMED COMPANY (AND ANY OF ITS AFFILIATES, PARTNERS, REPRESENTATIVES, AGENTS, CONSULTANTS AND EMPLOYEES) IS SUBJECT TO THE TERMS AND CONDITIONS AGREED UPON BETWEEN SCHLUMBERGER AND THE COMPANY, INCLUDING: (a) RESTRICTIONS ON USE OF THE RECORDED-DATA; (b) DISCLAIMERS AND WAIVERS OF WARRANTIES AND REPRESENTATIONS REGARDING COMPANY'S USE AND RELIANCE UPON THE RECORDED-DATA; AND (c) CUSTOMER'S FULL AND SOLE RESPONSIBILITY FOR ANY INFERENCE DRAWN OR DECISION MADE IN CONNECTION WITH THE USE OF THIS RECORDED-DATA.

Operational Run Summary

Notes			
Run 1 (Bit Size: 8.5 in)			
DateTime Log Started	27-Apr-2022 02:23:10	DateTime Log Finished	30-Apr-2022 03:25:16
Start Depth (ft)	1668	Stop Depth (ft)	17204
Mud Type	Oil Based Mud	Mud Density (lbm/gal)	10
Potassium (%)	0	Barite	Yes
GR Sensor Offset (ft)	29.93	Calibration Coefficient	1
DNI Sensor Offset (ft)	26.1		
Run 2 (Bit Size: 8.5 in)			
DateTime Log Started	30-Apr-2022 03:25:22	DateTime Log Finished	01-May-2022 02:40:24
Start Depth (ft)	17204	Stop Depth (ft)	17941
Mud Type	Oil Based Mud	Mud Density (lbm/gal)	10
Potassium (%)	0	Barite	Yes
GR Sensor Offset (ft)	30.91	Calibration Coefficient	1

Log

Description: Xbolt GAMMA RAY

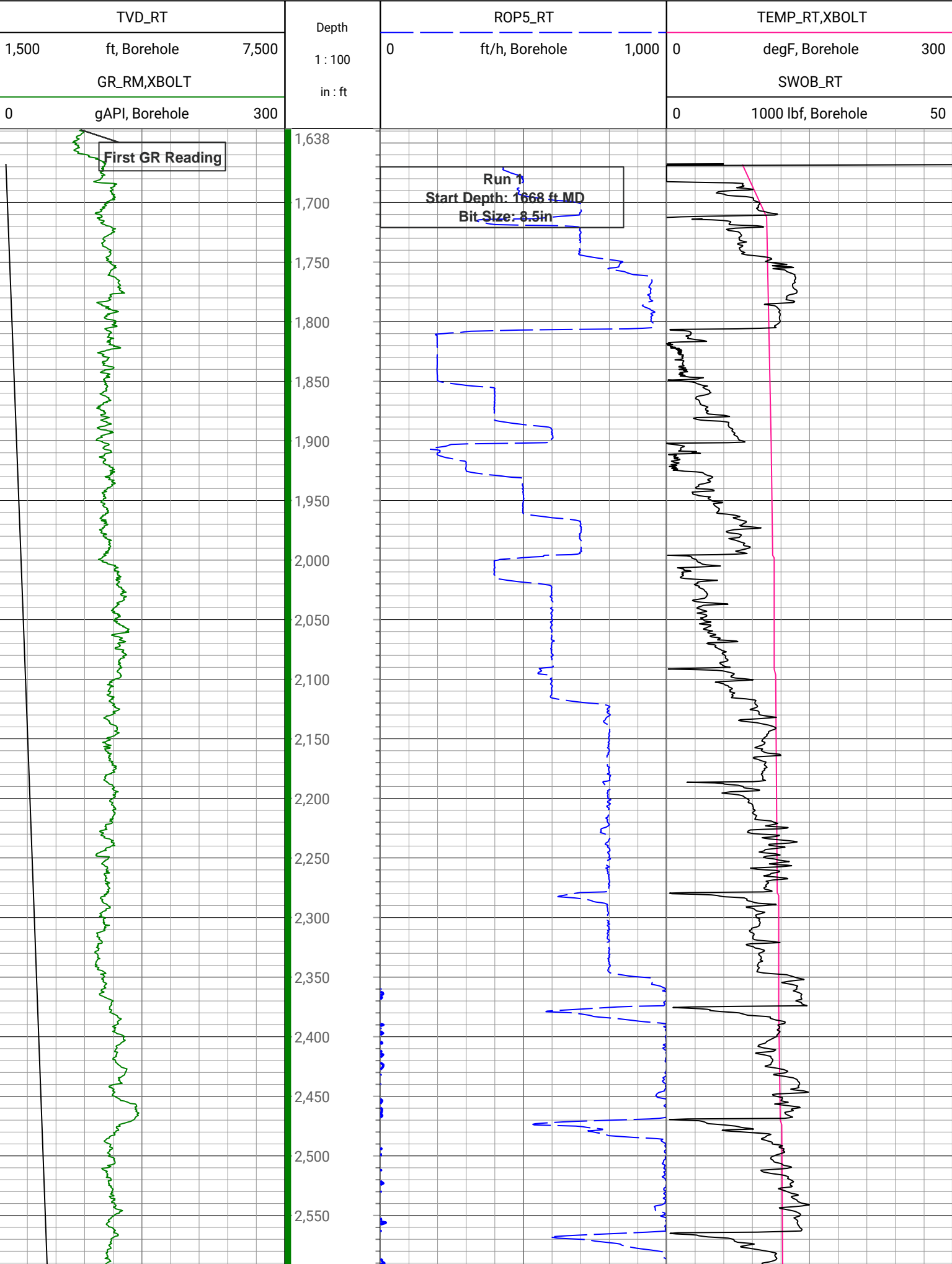
Format: XBOLT_PDC_Bost Farm

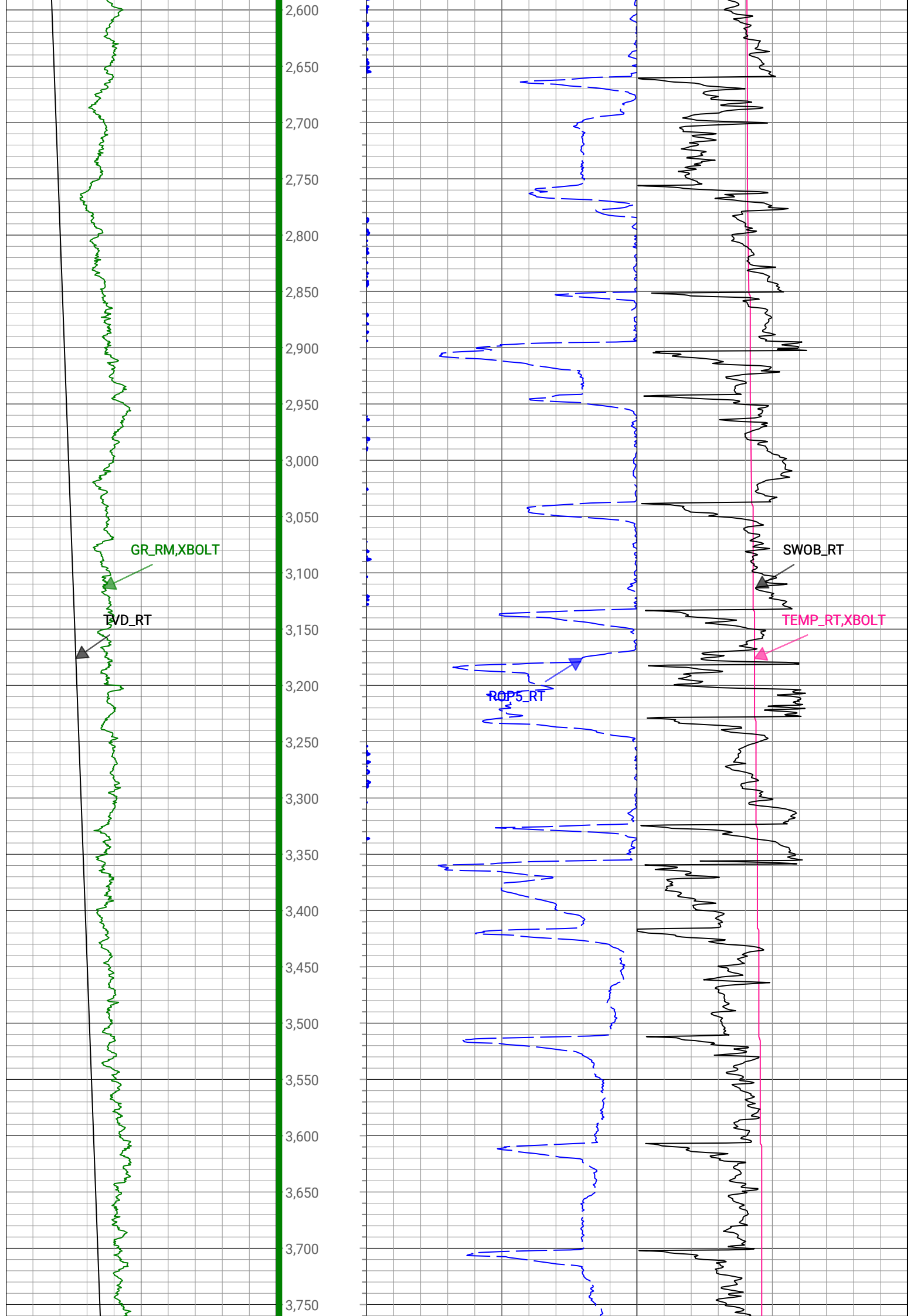
Index Scale: 1in/100ft

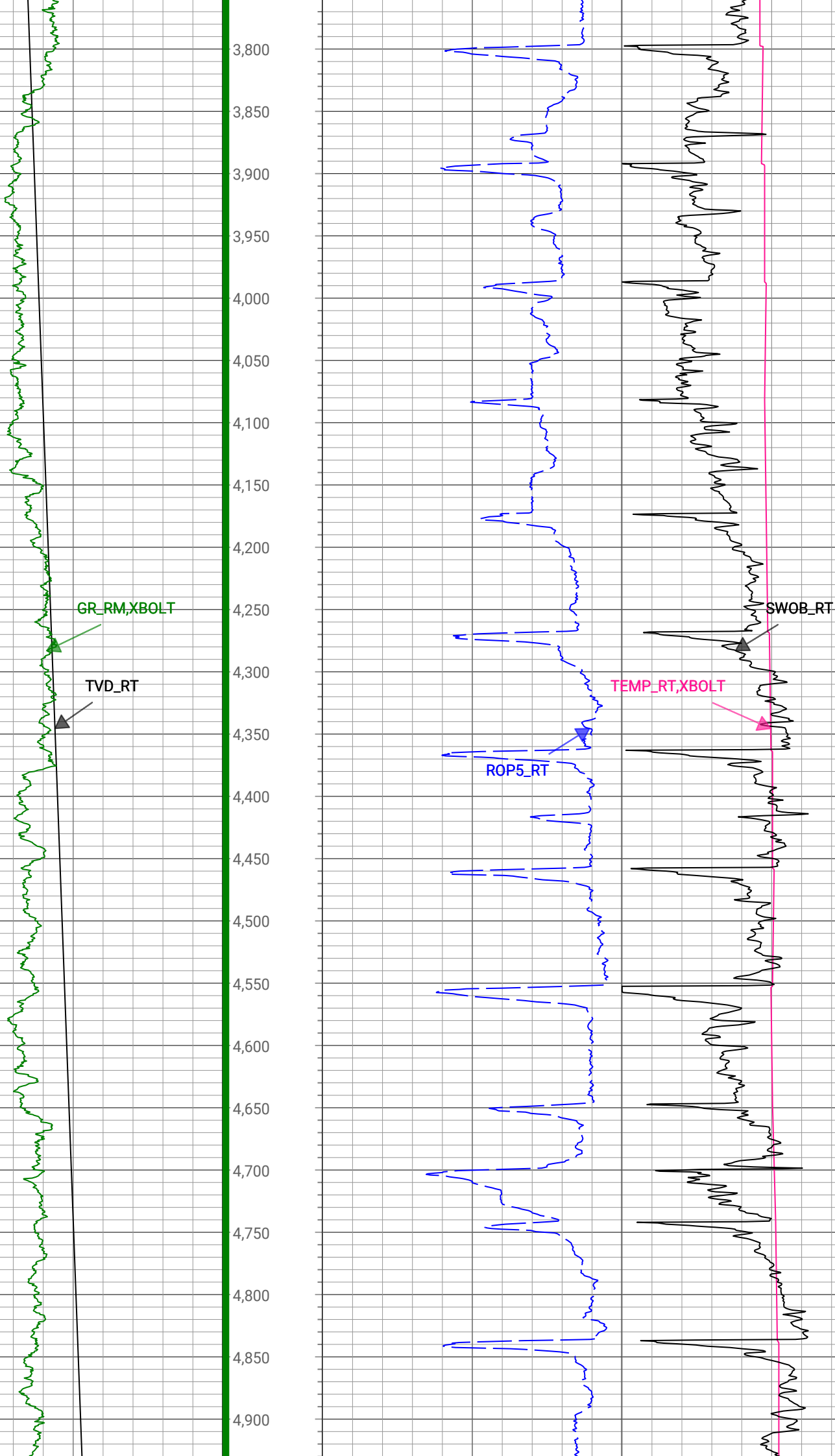
Index Unit: ft

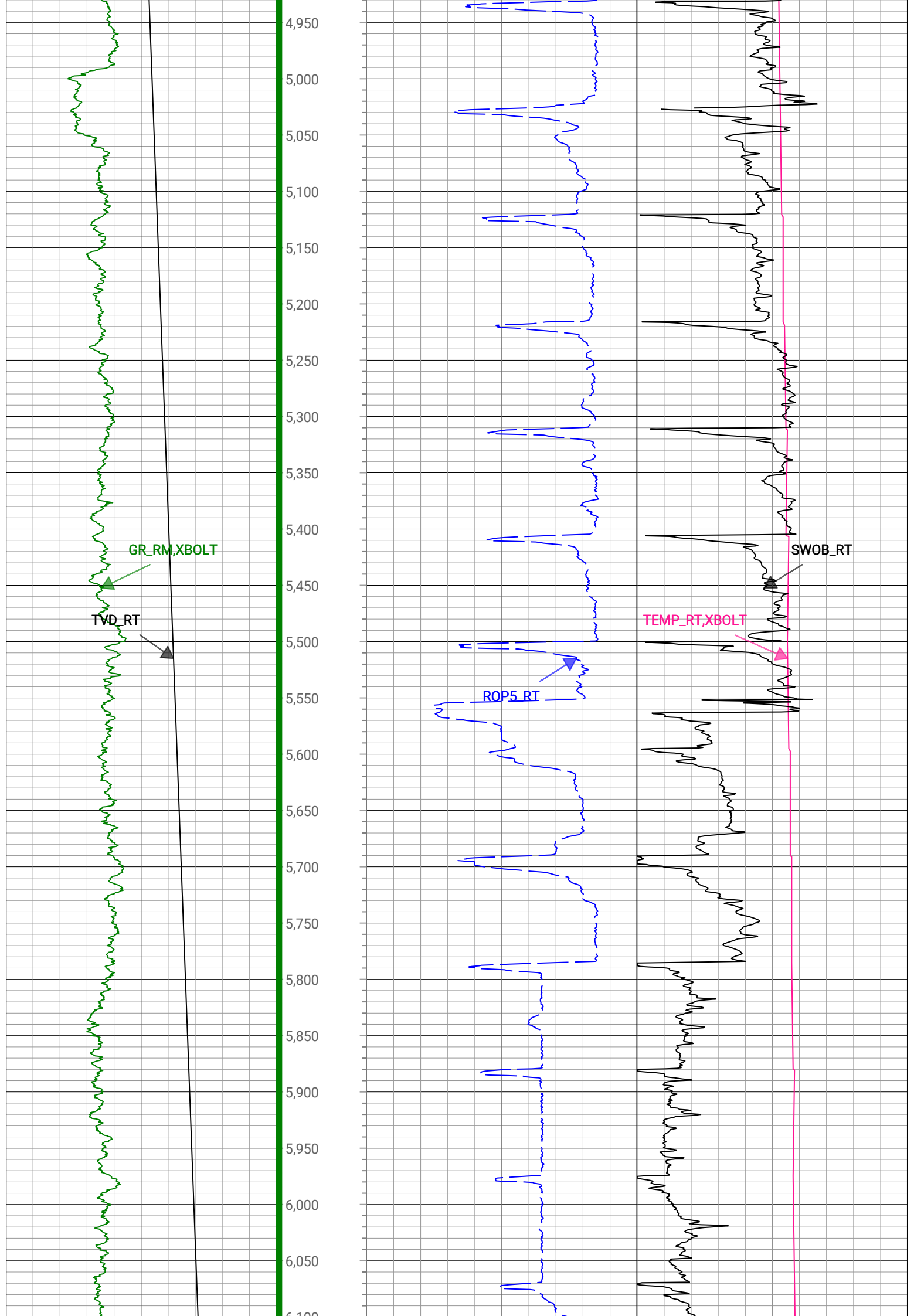
Index Type: Measured Depth

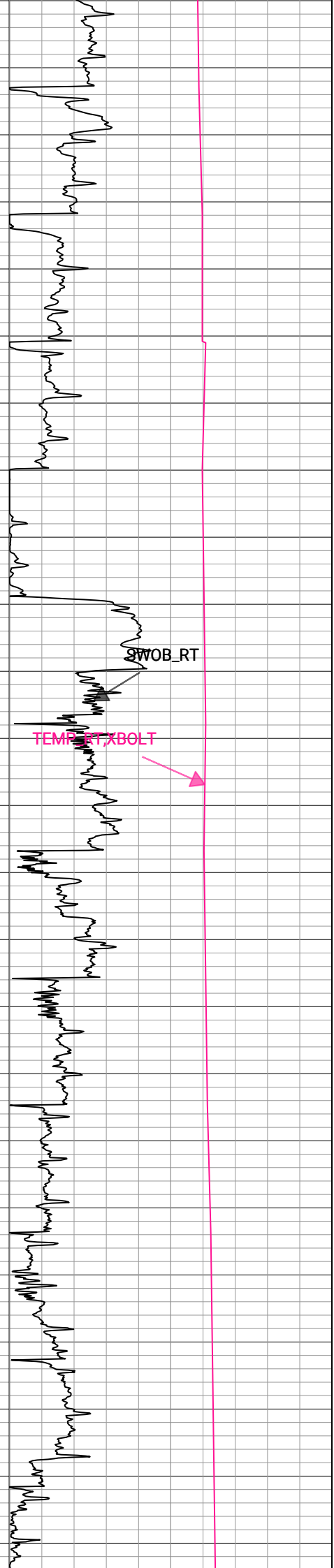
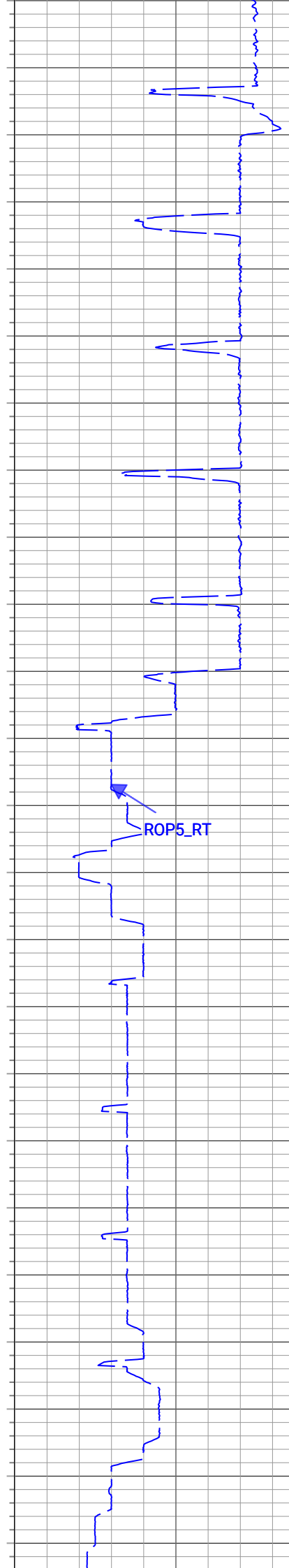
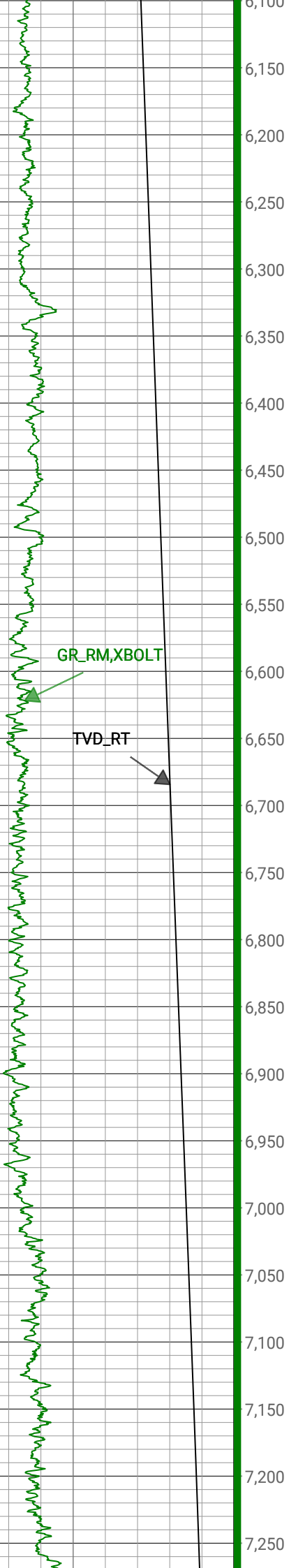
Creation Date: 04-May-2022

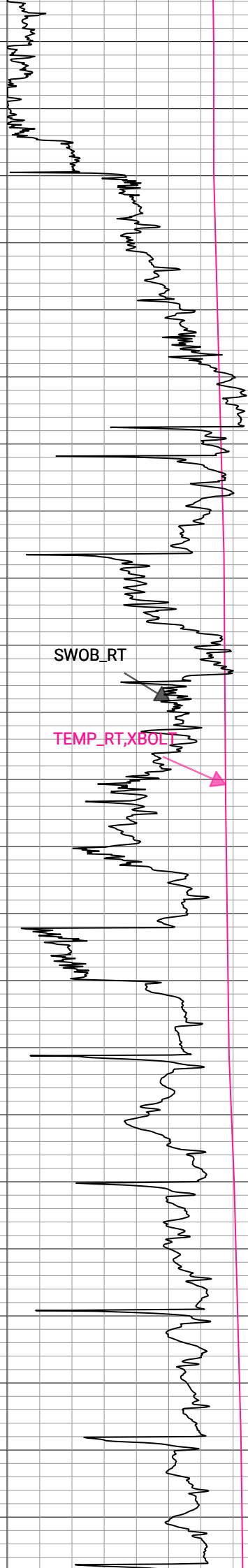
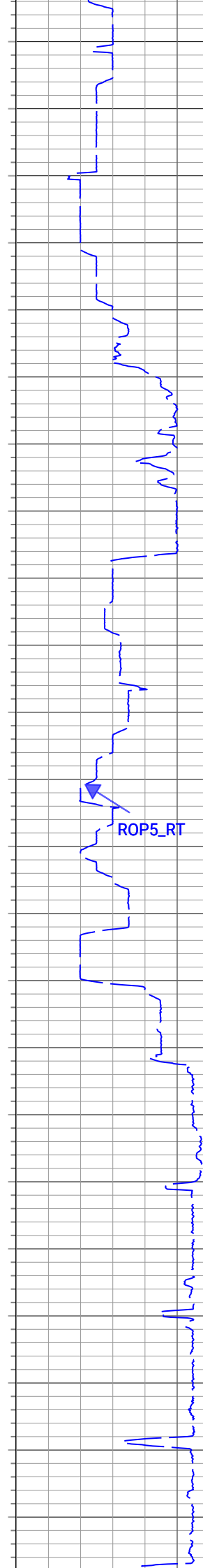
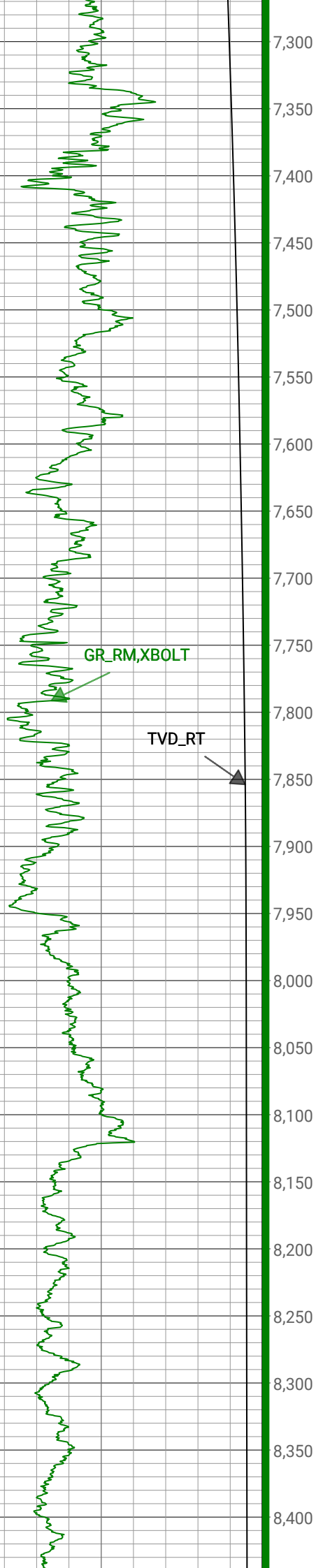


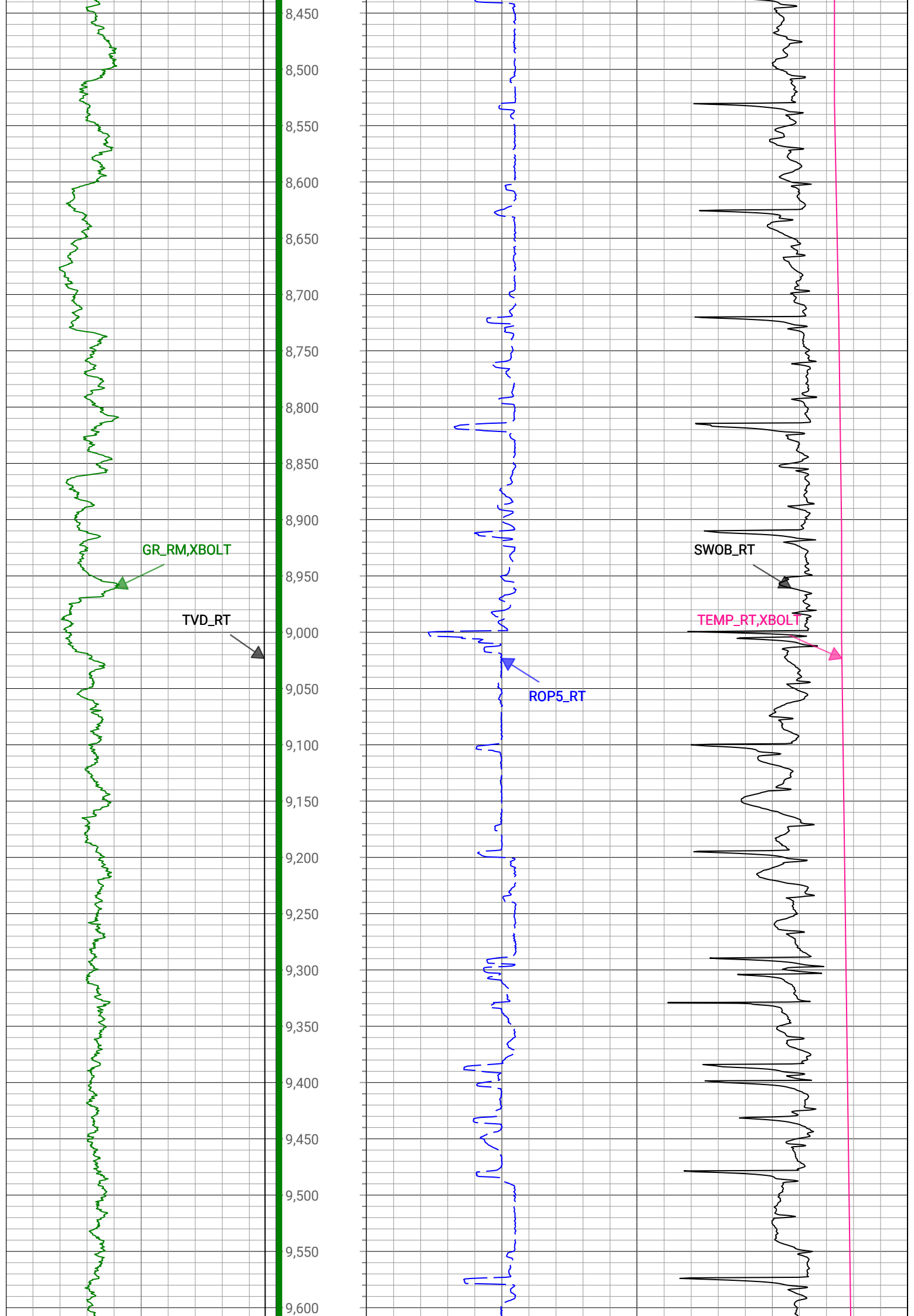


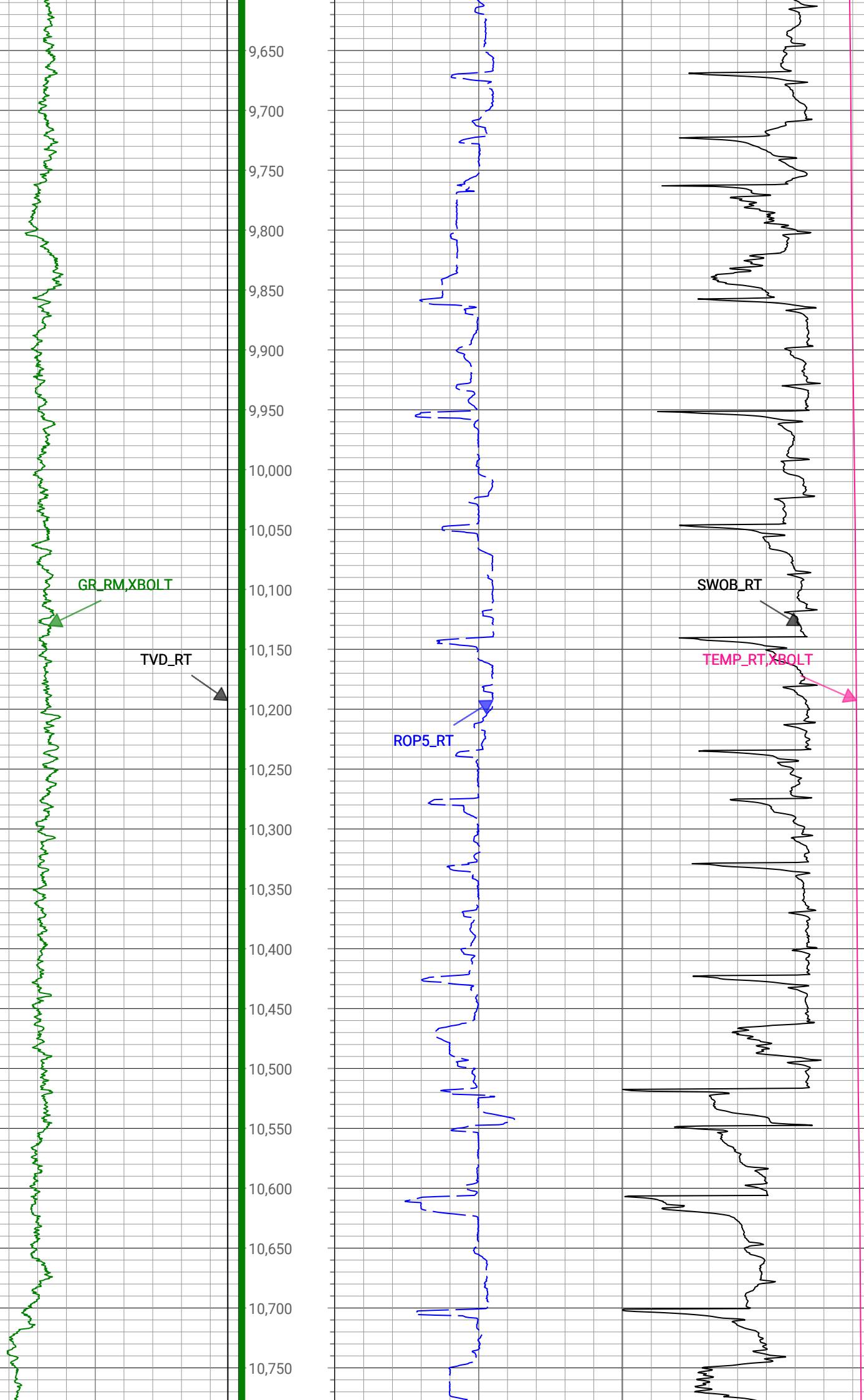


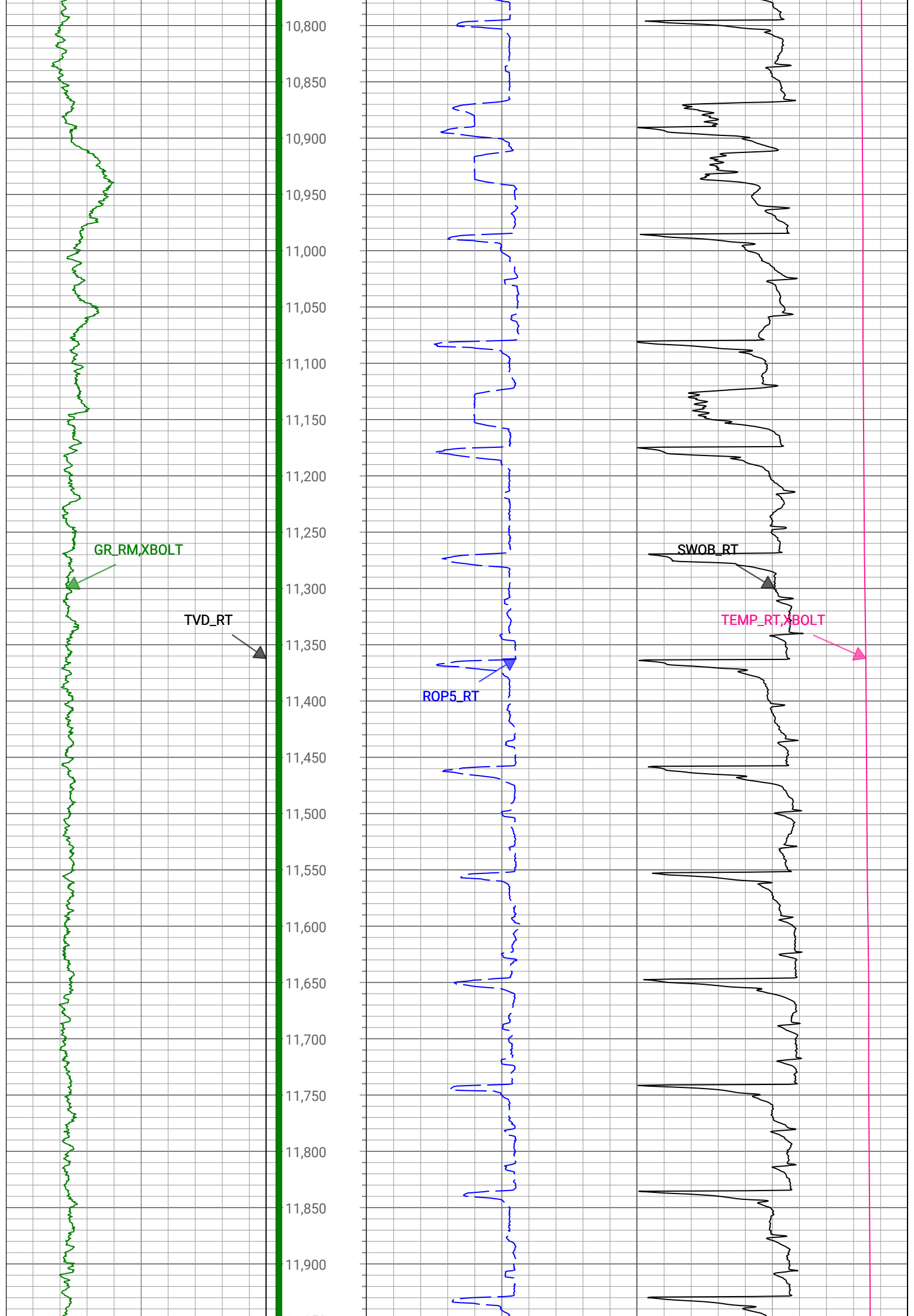


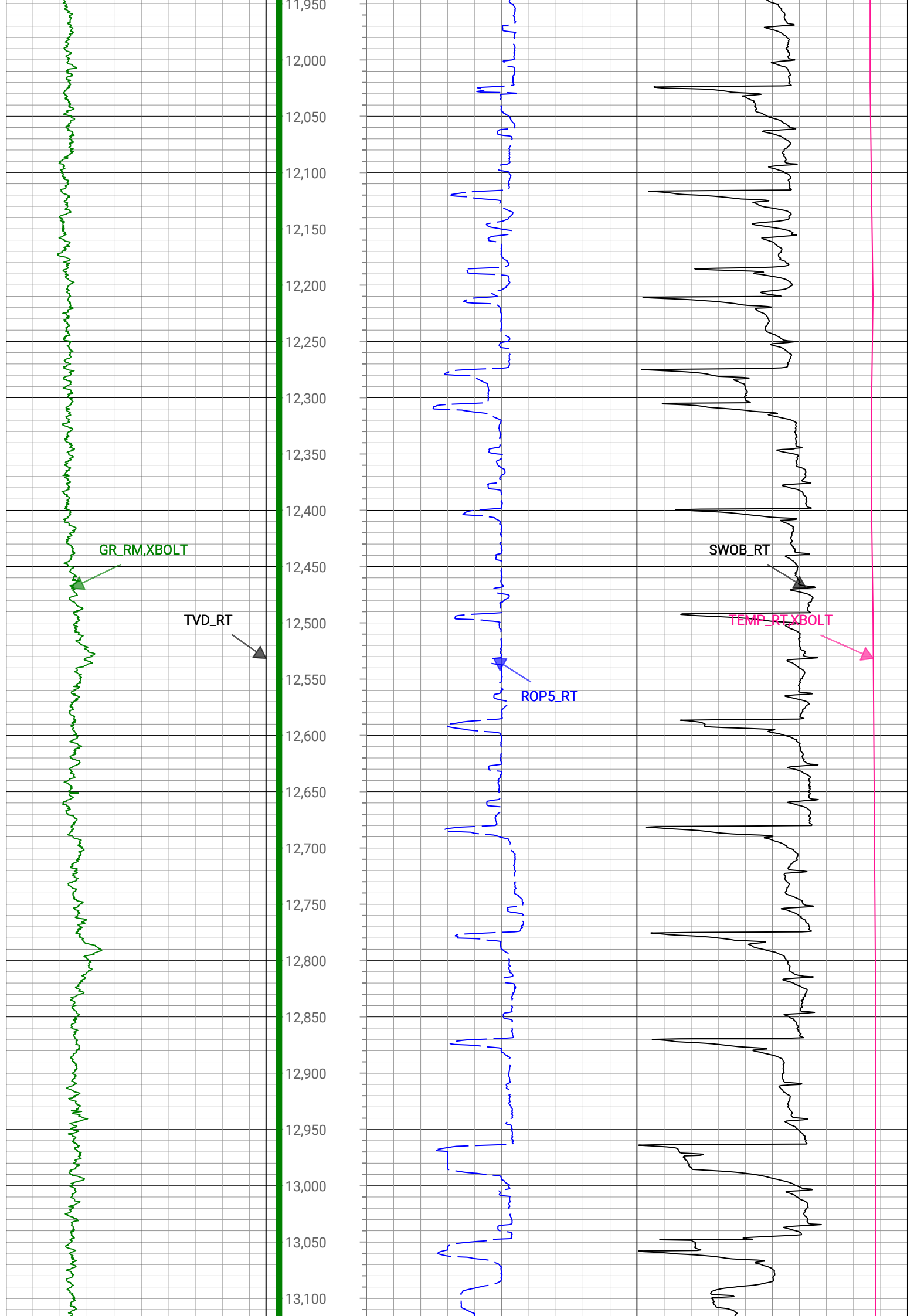


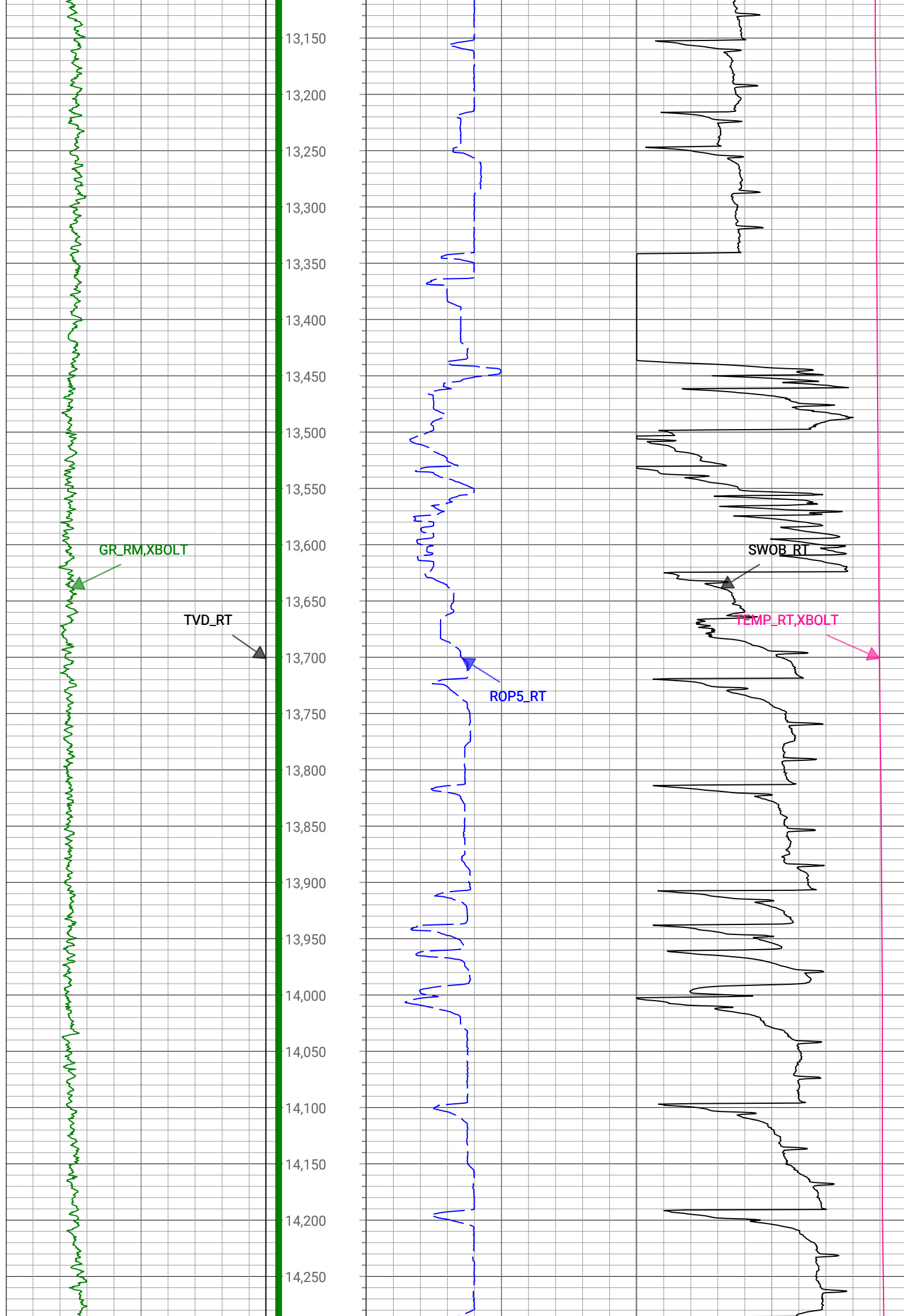


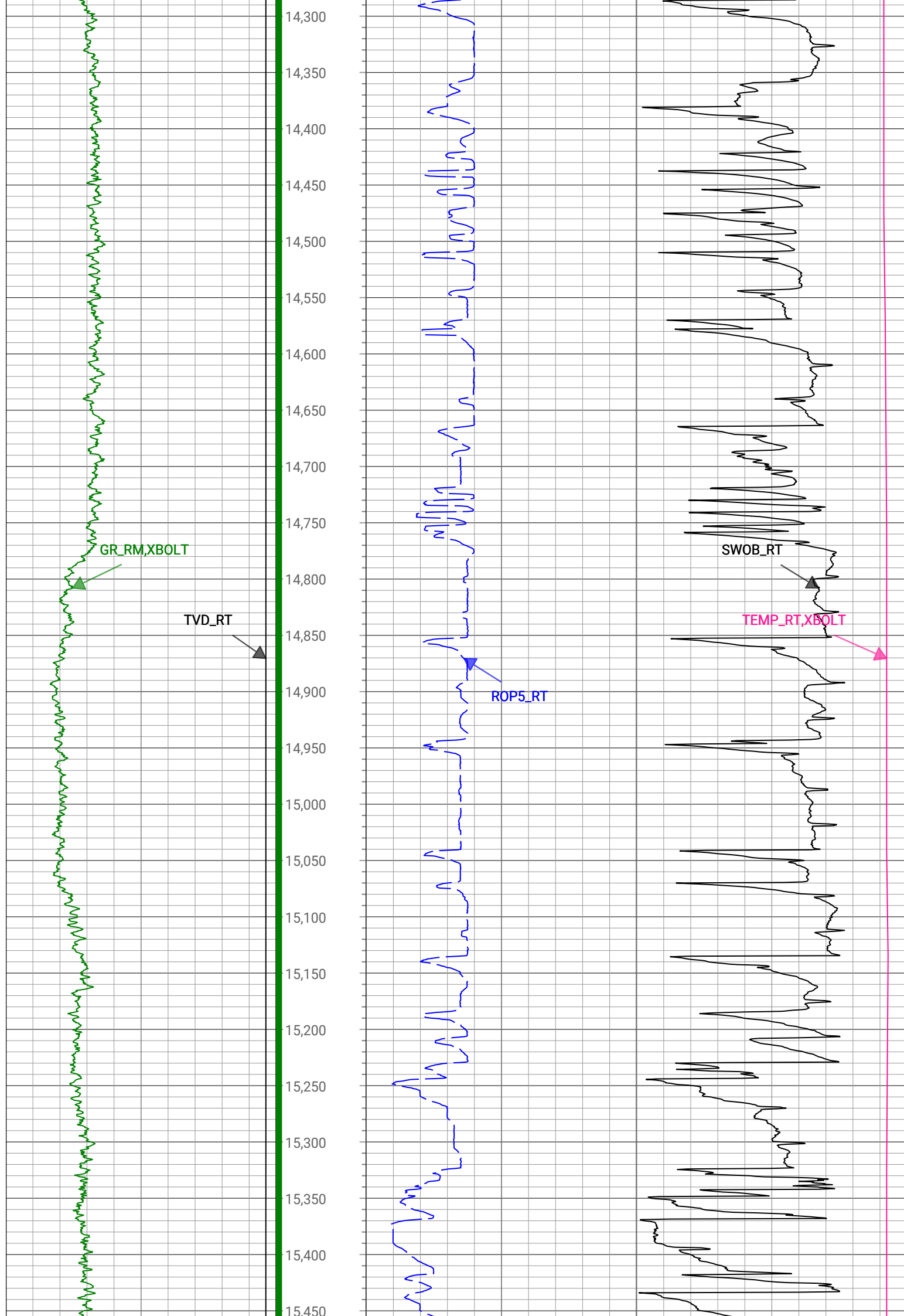


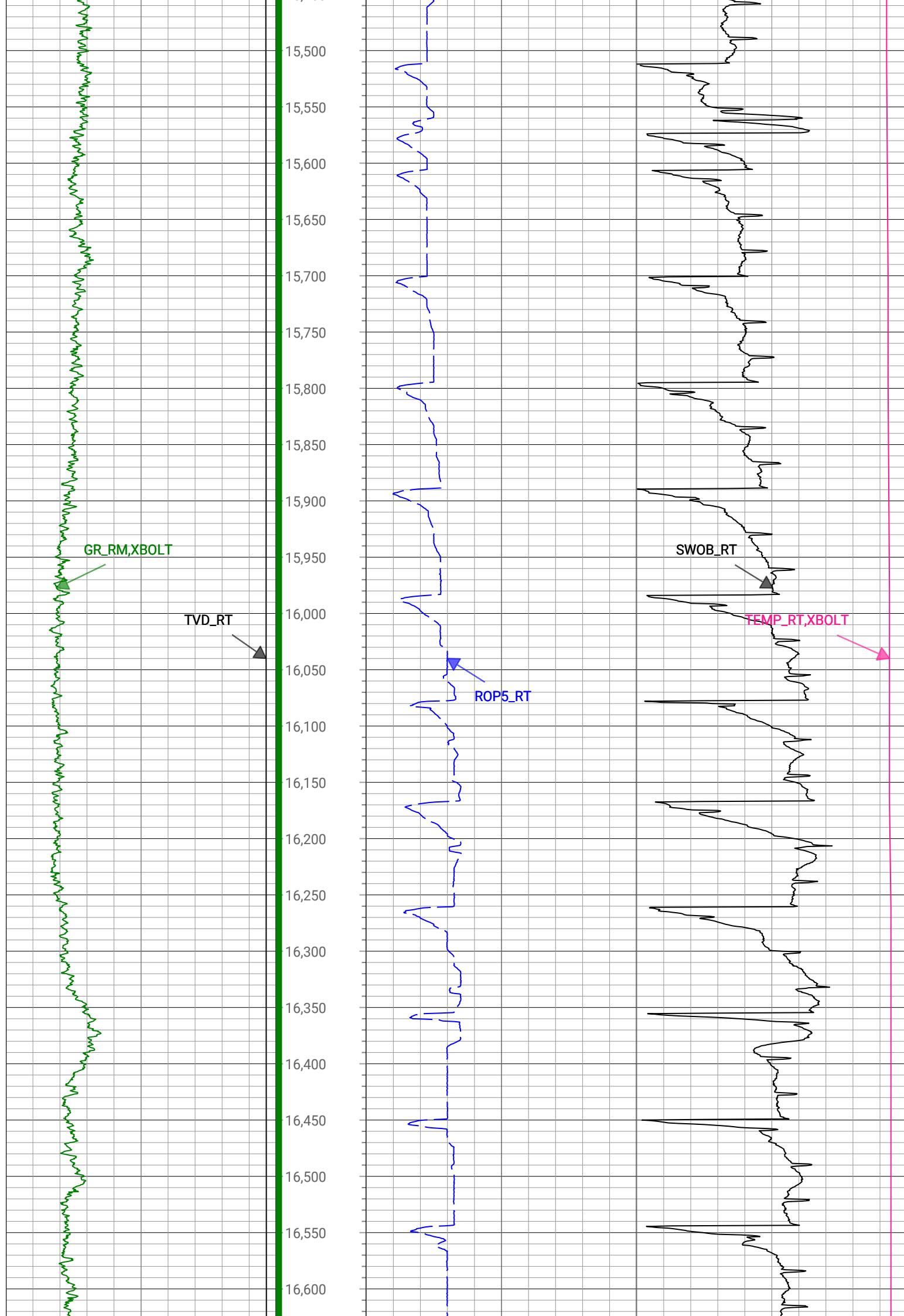


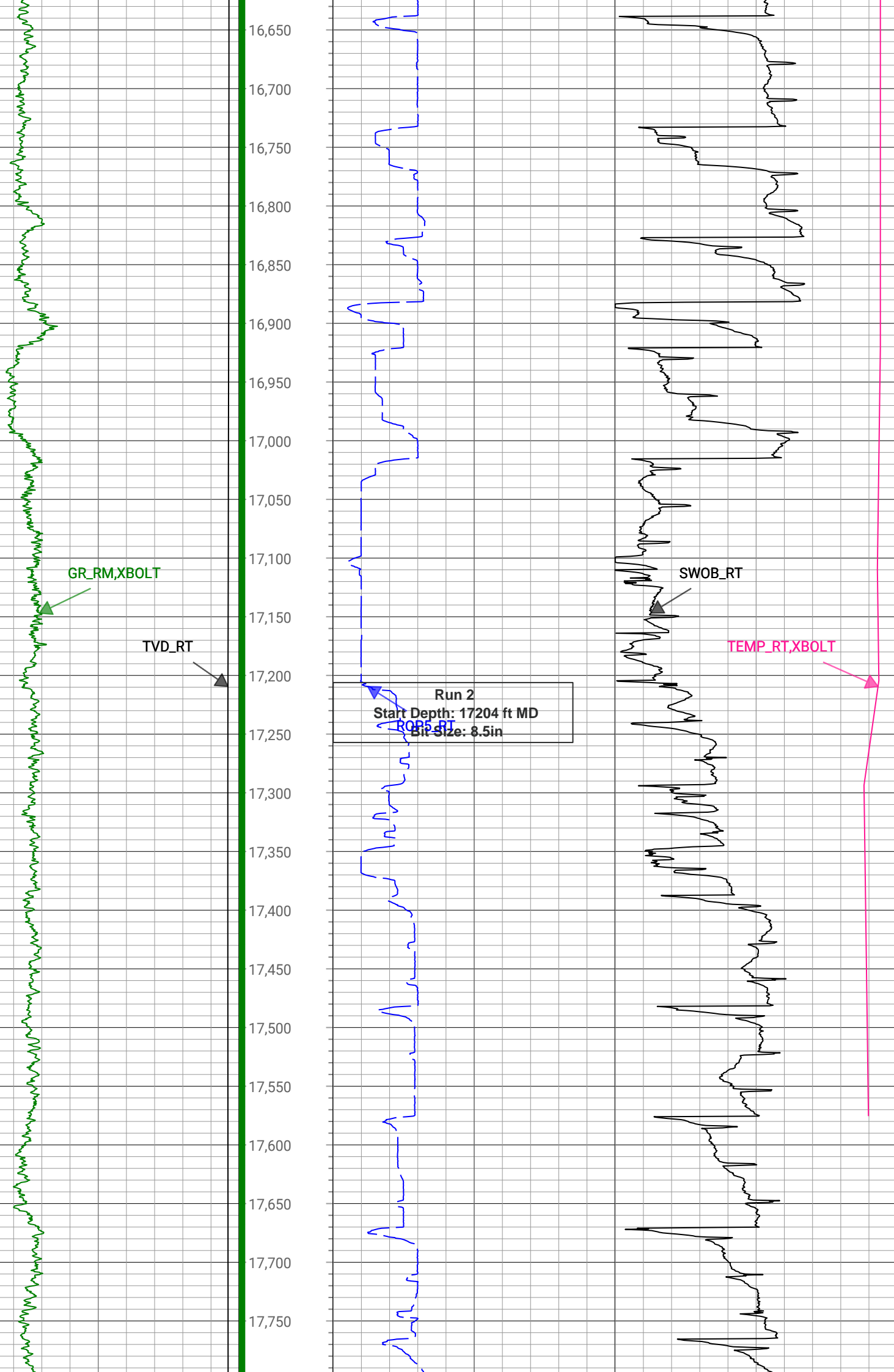












1608.5	17.1	229.2	1593.65	-108.4	-77.1	-121.58	1.82	143.96	237.62	MWD
1685	17.18	228.65	1666.75	-122.94	-91.91	-138.58	0.24	166.29	236.45	Manual
1779	16.43	229.16	1756.73	-140.46	-109.78	-159.05	0.81	193.26	235.39	MWD
1874	17	222.46	1847.73	-156.87	-128.81	-178.6	2.11	220.2	234.2	MWD
1969	18.93	227.65	1938.1	-174.25	-149.44	-199.36	2.64	249.15	233.15	MWD
2063	21.08	232.16	2026.43	-195.43	-170.08	-223.99	2.81	281.24	232.79	MWD
2158	22.32	231.71	2114.69	-219.46	-191.74	-251.64	1.32	316.37	232.69	MWD
2253	23.01	233.54	2202.36	-244.83	-213.96	-280.73	1.04	352.97	232.69	MWD
2347	23.19	236.11	2288.82	-271.38	-235.19	-310.87	1.09	389.82	232.89	Manual
2442	23.22	238.45	2376.14	-299.41	-255.42	-342.36	0.97	427.14	233.27	Manual
2537	22.18	239.68	2463.78	-327.61	-274.28	-373.8	1.2	463.63	233.73	Manual
2631	23.21	239.37	2550.5	-355.69	-292.67	-405.05	1.1	499.72	234.15	Manual
2726	23.12	239.51	2637.84	-384.6	-311.67	-437.23	0.11	536.95	234.52	Manual
2820	22.89	237.83	2724.37	-412.7	-330.77	-468.61	0.74	573.59	234.78	Manual
2915	23.09	236.3	2811.82	-440.4	-350.94	-499.75	0.66	610.66	234.92	Manual
3010	22.39	237.97	2899.44	-467.84	-370.88	-530.59	1	647.36	235.05	Manual
3104	22.72	237.83	2986.25	-495.1	-390.04	-561.13	0.36	683.37	235.2	Manual
3199	22.83	237.85	3073.84	-522.89	-409.61	-592.26	0.12	720.11	235.33	Manual
3294	22.28	235.07	3161.58	-549.83	-429.73	-622.63	1.26	756.53	235.39	Manual
3389	21.81	235.58	3249.63	-575.72	-450.02	-651.95	0.53	792.19	235.38	Manual
3484	22.75	235.59	3337.54	-601.98	-470.37	-681.67	0.99	828.2	235.39	Manual
3579	22.03	236.87	3425.37	-628.64	-490.49	-711.74	0.92	864.38	235.43	Manual
3673	21.7	236.47	3512.61	-654.61	-509.73	-740.99	0.39	899.38	235.48	Manual
3768	21.62	236.62	3600.9	-680.58	-529.06	-770.25	0.1	934.44	235.52	Manual
3862	22.54	234.98	3688.01	-706.42	-548.92	-799.46	1.18	969.77	235.53	Manual
3957	22.62	236.67	3775.73	-733.12	-569.41	-829.64	0.69	1006.25	235.54	Manual
4052	22.21	237.94	3863.55	-760.26	-588.98	-860.12	0.67	1042.45	235.6	Manual
4146	22.09	236.75	3950.62	-786.84	-608.1	-889.96	0.49	1077.88	235.66	Manual
4241	21.89	236.26	4038.7	-813.16	-627.73	-919.62	0.29	1113.44	235.68	Manual
4335	21.13	235.72	4126.16	-838.46	-647.01	-948.2	0.84	1147.91	235.69	Manual
4430	22.34	237.01	4214.4	-864.44	-666.48	-977.49	1.37	1183.08	235.71	Manual
4525	22.53	236.99	4302.21	-891.48	-686.23	-1007.9	0.2	1219.33	235.75	Manual
4620	22.28	237.59	4390.04	-918.61	-705.8	-1038.36	0.36	1255.53	235.8	Manual
4714	22.41	237.51	4476.98	-945.49	-724.97	-1068.52	0.14	1291.25	235.84	Manual
4809	22.11	235.47	4564.9	-972.12	-744.83	-1098.52	0.87	1327.23	235.86	Manual
4904	21.66	236.53	4653.06	-998.11	-764.64	-1127.88	0.63	1362.64	235.86	Manual
4999	22.03	235.03	4741.24	-1023.96	-784.52	-1157.1	0.7	1397.98	235.86	Manual
5093	22.34	235.31	4828.28	-1049.66	-804.79	-1186.24	0.35	1433.47	235.85	Manual
5188	22.82	234.99	4915.99	-1076.07	-825.64	-1216.17	0.52	1469.95	235.83	Manual
5283	21.29	233.17	5004.04	-1101.44	-846.54	-1245.07	1.76	1505.6	235.79	Manual
5377	21.86	232.51	5091.46	-1125.48	-867.43	-1272.61	0.66	1540.12	235.72	Manual
5472	22.62	236.17	5179.39	-1151.16	-888.36	-1301.82	1.66	1576.05	235.69	Manual
5567	22.13	235.03	5267.24	-1177.53	-908.79	-1331.66	0.69	1612.21	235.69	Manual
5661	22.11	235.56	5354.32	-1203.22	-928.94	-1360.76	0.21	1647.61	235.68	Manual
5756	22.24	235.7	5442.29	-1229.38	-949.18	-1390.36	0.15	1683.46	235.68	Manual
5851	21.52	235.88	5530.45	-1255.28	-969.09	-1419.63	0.76	1718.86	235.68	Manual
5946	21.62	233.85	5618.8	-1280.44	-989.19	-1448.19	0.79	1753.78	235.66	Manual
6041	21.26	235.76	5707.23	-1305.43	-1009.2	-1476.56	0.83	1788.5	235.65	Manual
6135	21.19	235.2	5794.85	-1330.2	-1028.49	-1504.6	0.23	1822.53	235.65	Manual
6230	21.07	234.84	5883.46	-1354.94	-1048.12	-1532.66	0.19	1856.77	235.63	Manual

6325	22.18	235.25	5971.77	-1380.24	-1068.17	-1561.36	1.18	1891.78	235.62	Manual
6419	22.4	236.14	6058.75	-1406.28	-1088.27	-1590.81	0.43	1927.43	235.62	Manual
6514	21.85	235.62	6146.75	-1432.5	-1108.34	-1620.43	0.61	1963.21	235.63	Manual
6609	22.16	235.46	6234.83	-1458.43	-1128.48	-1649.78	0.33	1998.81	235.63	Manual
6703	18.43	224.14	6323.02	-1479.95	-1149.21	-1674.75	5.74	2031.12	235.54	Manual
6798	16.97	193.94	6413.71	-1489.91	-1173.49	-1688.58	9.68	2056.3	235.2	Manual
6893	16.65	169.45	6504.76	-1486.66	-1200.36	-1689.43	7.41	2072.44	234.61	Manual
6987	16.51	143.89	6594.97	-1472.76	-1224.42	-1679.07	7.7	2078.1	233.9	Manual
7082	17.2	122.85	6685.98	-1450.39	-1242.96	-1659.3	6.43	2073.22	233.16	Manual
7176	23.32	117.5	6774.13	-1420.05	-1259.11	-1631.09	6.8	2060.54	232.33	Manual
7271	31.9	117.11	6858.23	-1378.34	-1279.27	-1592	9.03	2042.3	231.22	Manual
7366	39.84	114.98	6935.15	-1325.2	-1303.6	-1541.99	8.46	2019.18	229.79	Manual
7460	49.53	109.55	7001.93	-1260.99	-1328.35	-1480.83	11.07	1989.31	228.11	Manual
7555	57.86	104.56	7058.15	-1185.31	-1350.6	-1407.69	9.73	1950.82	226.19	Manual
7650	61.95	100.07	7105.8	-1103.32	-1368.05	-1327.42	5.94	1906.21	224.14	Manual
7744	68.43	96.54	7145.23	-1018.06	-1380.3	-1243.05	7.69	1857.52	222	Manual
7839	74.31	95.82	7175.57	-928.17	-1389.98	-1153.59	6.23	1806.32	219.69	Manual
7933	84.92	96.43	7192.49	-835.94	-1399.84	-1061.79	11.31	1756.97	217.18	Manual
8028	87.75	92.97	7198.56	-741.4	-1407.6	-967.32	4.7	1707.94	214.5	Manual
8123	88.59	90.61	7201.59	-647.16	-1410.57	-872.43	2.64	1658.56	211.74	Manual
8217	88.14	90.36	7204.28	-554.18	-1411.36	-778.47	0.55	1611.82	208.88	Manual
8312	87.91	89.99	7207.55	-460.3	-1411.65	-683.53	0.46	1568.43	205.84	Manual
8407	87.6	90.53	7211.27	-366.42	-1412.08	-588.6	0.66	1529.84	202.63	Manual
8502	88.38	89.42	7214.6	-272.6	-1412.04	-493.66	1.43	1495.85	199.27	Manual
8596	88.11	90.66	7217.48	-179.73	-1412.11	-399.71	1.35	1467.59	195.8	Manual
8691	87.9	89.65	7220.79	-85.86	-1412.36	-304.77	1.09	1444.87	192.18	Manual
8786	88.15	89.83	7224.06	7.9	-1411.93	-209.82	0.32	1427.44	188.45	Manual
8880	88.37	89.63	7226.92	100.69	-1411.49	-115.87	0.32	1416.24	184.69	Manual
8975	88.02	90.3	7229.91	194.53	-1411.43	-20.92	0.8	1411.59	180.85	Manual
9070	88.38	90.14	7232.89	288.43	-1411.8	74.04	0.41	1413.73	177	Manual
9164	88.34	89.65	7235.59	381.26	-1411.62	168	0.52	1421.58	173.21	Manual
9259	87.94	90.44	7238.67	475.11	-1411.7	262.95	0.93	1435.98	169.45	Manual
9354	87.99	89.85	7242.04	568.98	-1411.94	357.89	0.62	1456.59	165.78	Manual
9448	87.67	89.89	7245.6	661.78	-1411.72	451.82	0.34	1482.26	162.25	Manual
9543	87.94	90.68	7249.24	755.67	-1412.2	546.75	0.88	1514.34	158.84	Manual
9638	88.04	90.64	7252.57	849.66	-1413.29	641.68	0.11	1552.14	155.58	Manual
9732	88.23	90.76	7255.63	942.68	-1414.44	735.62	0.24	1594.3	152.52	Manual
9826	87.94	88.81	7258.77	1035.47	-1414.09	829.57	2.1	1639.46	149.6	Manual
10015	90.02	88.6	7262.14	1221.52	-1409.82	1018.48	1.11	1739.22	144.15	Manual
10109	90.4	89.36	7261.79	1314.15	-1408.14	1112.46	0.9	1794.56	141.69	Manual
10203	89.88	89.06	7261.56	1406.85	-1406.85	1206.45	0.64	1853.31	139.38	Manual
10297	90.19	89.16	7261.51	1499.51	-1405.39	1300.44	0.35	1914.75	137.22	Manual
10391	89.98	88.92	7261.37	1592.16	-1403.81	1394.43	0.34	1978.66	135.19	Manual
10485	89.72	88.61	7261.61	1684.73	-1401.78	1488.41	0.43	2044.59	133.28	Manual
10579	89.17	89.57	7262.52	1777.39	-1400.29	1582.39	1.18	2113	131.51	Manual
10674	88.6	89.24	7264.37	1871.1	-1399.31	1677.36	0.69	2184.4	129.84	Manual
10768	88.84	88.32	7266.47	1963.65	-1397.3	1771.32	1.01	2256.11	128.27	Manual
10862	89.33	87.51	7267.97	2055.96	-1393.89	1865.24	1.01	2328.53	126.77	Manual
10957	89.44	89.9	7268.99	2149.48	-1391.74	1960.21	2.52	2404.03	125.37	Manual
11052	88.93	90.14	7270.34	2243.37	-1391.77	2055.2	0.59	2482.11	124.11	Manual

11147	88.68	89.47	7272.32	2337.19	-1391.45	2150.17	0.75	2561.13	122.91	Manual
11241	89.71	90.5	7273.65	2430.07	-1391.42	2244.16	1.55	2640.52	121.8	Manual
11335	90.87	89.24	7273.17	2522.94	-1391.21	2338.16	1.82	2720.74	120.75	Manual
11524	90.15	90.71	7271.49	2709.7	-1391.13	2527.14	0.87	2884.73	118.83	Manual
11618	90.12	90.36	7271.27	2802.73	-1392.01	2621.14	0.37	2967.84	117.97	Manual
11712	90.34	88.43	7270.89	2895.47	-1391.01	2715.13	2.07	3050.71	117.13	Manual
11807	89.91	90.65	7270.68	2989.23	-1390.25	2810.12	2.38	3135.21	116.32	Manual
11901	90.38	89.02	7270.44	3082.09	-1389.98	2904.11	1.8	3219.62	115.58	Manual
11994	90.32	89.59	7269.87	3173.82	-1388.85	2997.11	0.62	3303.26	114.86	Manual
12089	89.64	90.73	7269.91	3267.75	-1389.12	3092.1	1.4	3389.8	114.19	Manual
12183	89.88	90.21	7270.3	3360.76	-1389.89	3186.1	0.61	3476.06	113.57	Manual
12278	90.18	89.16	7270.25	3454.57	-1389.37	3281.1	1.15	3563.14	112.95	Manual
12371	89.55	90.93	7270.47	3546.49	-1389.44	3374.09	2.02	3648.98	112.38	Manual
12464	90.45	89.5	7270.47	3638.45	-1389.79	3467.09	1.82	3735.27	111.84	Manual
12558	89.94	89.34	7270.15	3731.2	-1388.84	3561.08	0.57	3822.33	111.31	Manual
12653	89.8	89.65	7270.37	3824.96	-1388	3656.08	0.36	3910.68	110.79	Manual
12747	90	88.93	7270.53	3917.67	-1386.83	3750.07	0.79	3998.29	110.3	Manual
12841	89.89	90.82	7270.62	4010.54	-1386.63	3844.07	2.01	4086.51	109.84	Manual
12936	90.22	89.15	7270.53	4104.42	-1386.6	3939.06	1.79	4175.99	109.39	Manual
13030	90.32	89.71	7270.09	4197.17	-1385.67	4033.06	0.61	4264.46	108.96	Manual
13124	90.19	90.22	7269.67	4290.06	-1385.61	4127.05	0.56	4353.45	108.56	Manual
13218	89.78	90.07	7269.69	4383	-1385.85	4221.05	0.46	4442.73	108.18	Manual
13312	89.75	90.54	7270.08	4475.98	-1386.35	4315.05	0.5	4532.29	107.81	Manual
13407	89.71	90.5	7270.53	4569.99	-1387.21	4410.05	0.06	4623.08	107.46	Manual
13501	89.79	90.57	7270.94	4663.02	-1388.09	4504.04	0.11	4713.09	107.13	Manual
13596	90.23	88.87	7270.92	4756.84	-1387.63	4599.04	1.85	4803.82	106.79	Manual
13690	90.14	89.44	7270.62	4849.51	-1386.24	4693.03	0.61	4893.48	106.46	Manual
13784	89.91	89.16	7270.58	4942.23	-1385.09	4787.02	0.39	4983.37	106.14	Manual
13878	89.85	90.2	7270.77	5035.05	-1384.57	4881.02	1.11	5073.59	105.84	Manual
13973	90.11	89.24	7270.81	5128.87	-1384.1	4976.01	1.05	5164.92	105.54	Manual
14067	89.88	89.49	7270.81	5221.6	-1383.06	5070.01	0.36	5255.27	105.26	Manual
14162	90.36	89.53	7270.61	5315.36	-1382.25	5165	0.51	5346.76	104.98	Manual
14257	89.91	89.44	7270.39	5409.12	-1381.39	5260	0.48	5438.37	104.71	Manual
14351	90.05	90.51	7270.42	5502.01	-1381.35	5354	1.15	5529.32	104.47	Manual
14445	89.71	90.89	7270.62	5595.08	-1382.5	5447.99	0.54	5620.67	104.24	Manual
14540	90.01	89.83	7270.85	5689.06	-1383.1	5542.99	1.16	5712.94	104.01	Manual
14634	89.75	88.92	7271.05	5781.8	-1382.07	5636.98	1.01	5803.94	103.78	Manual
14822	90.29	89.82	7270.98	5967.27	-1380.01	5824.97	0.56	5986.2	103.33	Manual
14916	90.41	89.19	7270.41	6060.04	-1379.19	5918.96	0.68	6077.52	103.12	Manual
15010	89.97	90.2	7270.1	6152.86	-1378.69	6012.96	1.17	6168.99	102.91	Manual
15104	89.91	89.99	7270.2	6245.79	-1378.85	6106.96	0.23	6260.68	102.72	Manual
15199	89.71	90.02	7270.51	6339.68	-1378.86	6201.96	0.21	6353.39	102.53	Manual
15293	90.28	90.24	7270.52	6432.61	-1379.07	6295.95	0.65	6445.22	102.35	Manual
15387	90.68	89.25	7269.73	6525.44	-1378.65	6389.95	1.14	6536.98	102.18	Manual
15481	88.64	89.61	7270.29	6618.19	-1377.72	6483.94	2.2	6628.69	102	Manual
15575	88.73	89.2	7272.45	6710.91	-1376.74	6577.91	0.45	6720.44	101.82	Manual
15669	88.8	88.78	7274.47	6803.52	-1375.09	6671.87	0.45	6812.1	101.65	Manual
15763	89.83	88.77	7275.6	6896.09	-1373.08	6765.84	1.1	6903.76	101.47	Manual
15857	89.74	88.85	7275.95	6988.67	-1371.12	6859.82	0.13	6995.51	101.3	Manual
15951	90	89.61	7276.16	7081.37	-1369.86	6953.81	0.85	7087.45	101.14	Manual

16140	89.58	90.22	7276.86	7268.11	-1369.58	7142.81	0.39	7272.93	100.85	Manual
16233	89.79	90.29	7277.37	7360.09	-1369.99	7235.81	0.24	7364.36	100.72	Manual
16327	89.65	90.32	7277.83	7453.06	-1370.49	7329.8	0.15	7456.83	100.59	Manual
16422	88.93	89.62	7279	7546.94	-1370.44	7424.8	1.06	7550.21	100.46	Manual
16516	88.98	90.02	7280.72	7639.78	-1370.15	7518.78	0.43	7642.6	100.33	Manual
16610	89.45	89.11	7282.01	7732.56	-1369.44	7612.77	1.09	7734.96	100.2	Manual
16704	90.95	90.34	7281.68	7825.38	-1368.98	7706.76	2.06	7827.4	100.07	Manual
16798	91.48	89.72	7279.68	7918.27	-1369.03	7800.74	0.87	7919.96	99.95	Manual
16892	92.54	88.55	7276.39	8010.88	-1367.62	7894.67	1.68	8012.25	99.83	Manual
16986	92.59	87.88	7272.18	8103.2	-1364.69	7988.53	0.71	8104.25	99.69	Manual
17080	92.08	89.24	7268.35	8195.63	-1362.33	8082.42	1.54	8196.43	99.57	Manual
17174	94.06	92.17	7263.32	8288.55	-1363.48	8176.26	3.76	8289.17	99.47	Manual
17264	91.93	91.99	7258.61	8377.81	-1366.75	8266.07	2.38	8378.3	99.39	Manual
17360	89.85	92.21	7257.12	8473.15	-1370.26	8361.99	2.18	8473.52	99.31	Manual
17454	89.02	91.07	7258.05	8566.41	-1372.95	8455.94	1.5	8566.68	99.22	Manual
17548	89.14	90.94	7259.56	8659.54	-1374.6	8549.92	0.19	8659.71	99.13	Manual
17642	89.01	92.08	7261.08	8752.77	-1377.08	8643.87	1.22	8752.88	99.05	Manual
17831	88.94	91.78	7264.46	8940.4	-1383.44	8832.73	0.16	8940.42	98.9	Manual
17911	89.1	91.5	7265.83	9019.77	-1385.73	8912.69	0.4	9019.77	98.84	Manual
17941	89.1	91.5	7266.3	9049.52	-1386.52	8942.68	0	9049.52	98.81	Manual

Company:

PDC Energy Inc

Well:

Bost Farm 39N-8C-L

Field Name:

Wattenberg

Country Name:


United States

State Name:

Colorado

County Name:

Weld



Xbolt GAMMA RAY

1in/100ft Measured Depth

Final Print

Recorded Mode