

PDC Energy Inc. DJ Basin

Bost Farm 39N-8B-L
 Bost Farms 5-7 Pad SEC.7-T5N-R66W
 North American Datum 1983 , US State Plane 1983, Colorado Northern Zone
 Ground Elevation: 4874.0
 +N/-S +E/-W Northing Easting Longitude Slot
 0.0 0.0 1394603.85 3187057.01 40.414644 -104.828215
 Patterson 272 - RKB 28WELL @ 4902ft (Patterson 272 - RKB 28')



Bost Farms 5-7 Pad SEC.7-T5N-R66W
 Bost Farm 39N-8B-L
 39N-8B-L_Final Surveys
 15:08, May 16 2022

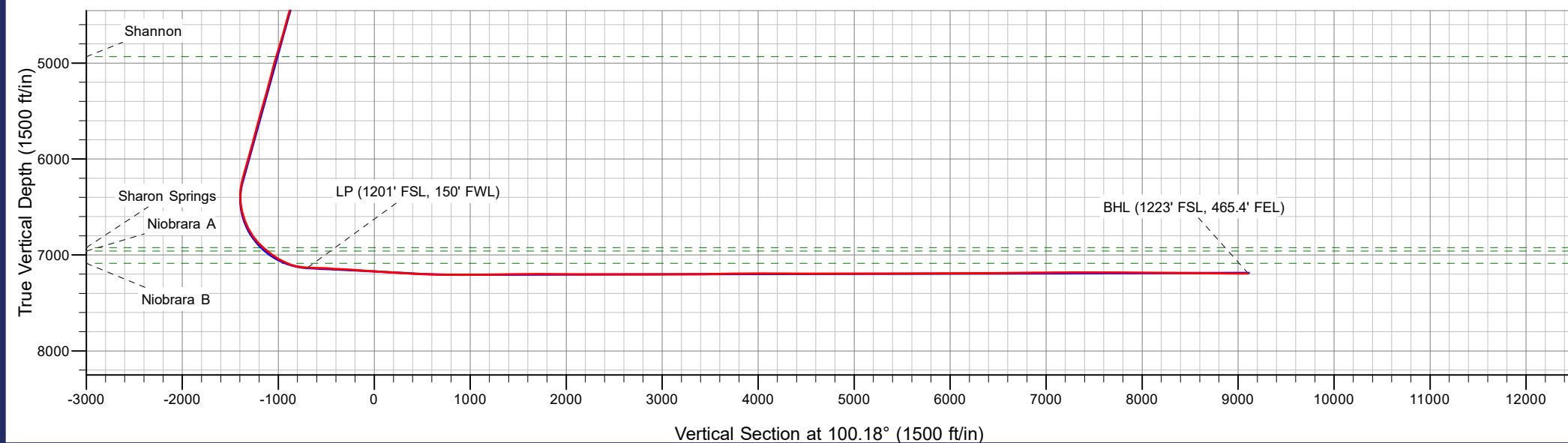
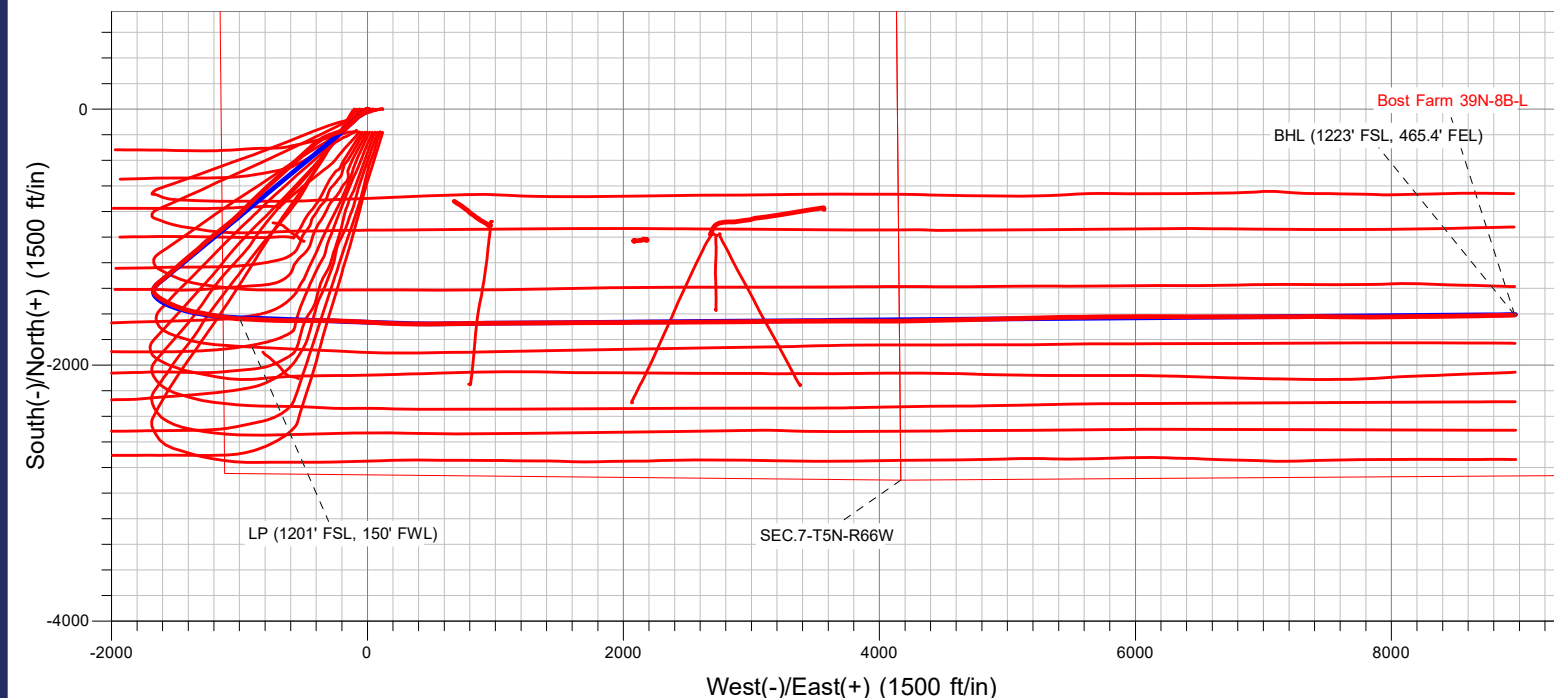
MAzimuths to True North
 Magnetic North: 7.90°

Magnetic Field
 Strength: 51908.0nT
 Dip Angle: 66.65°
 Date: 04/21/2022
 Model: HRGM

ANNOTATIONS

MD	TVD	Annotation
7957.7	7131.9	LP (1201' FSL, 150' FWL)
17923.0	7194.0	BHL (1223' FSL, 465.4' FEL)

FINAL SURVEY
Projected Bottom Hole Location
17923' MD / 7194' TVD
89.71° INC / 88.6° AZM
1223' FSL / 465.4' FEL





PDC Energy Inc. DJ Basin

SEC.7-T5N-R66W

Bost Farms 5-7 Pad SEC.7-T5N-R66W

Bost Farm 39N-8B-L

Bost Farm 39N-8B-L Wellbore #1

Survey: Surface

Standard Survey Report

16 May, 2022



Company:	PDC Energy Inc. DJ Basin	Local Co-ordinate Reference:	Well Bost Farm 39N-8B-L
Project:	SEC.7-T5N-R66W	TVD Reference:	WELL @ 4902ft (Patterson 272 - RKB 28')
Site:	Bost Farms 5-7 Pad SEC.7-T5N-R66W	MD Reference:	WELL @ 4902ft (Patterson 272 - RKB 28')
Well:	Bost Farm 39N-8B-L	North Reference:	True
Wellbore:	Bost Farm 39N-8B-L Wellbore #1	Survey Calculation Method:	Minimum Curvature
Design:	39N-8B-L_Final Surveys	Database:	US_EDM

Project	SEC.7-T5N-R66W, Weld County, Co		
Map System:	US State Plane 1983	System Datum:	Mean Sea Level
Geo Datum:	North American Datum 1983		
Map Zone:	Colorado Northern Zone		Using geodetic scale factor

Site	Bost Farms 5-7 Pad SEC.7-T5N-R66W				
Site Position:		Northing:	1,394,603.55 usft	Latitude:	40.414641
From:	Lat/Long	Easting:	3,187,178.01 usft	Longitude:	-104.827780
Position Uncertainty:	0.0 ft	Slot Radius:	13-3/16 "	Grid Convergence:	0.43 °

Well	Bost Farm 39N-8B-L					
Well Position	+N/-S	0.0 ft	Northing:	1,394,603.85 usft	Latitude:	40.414644
	+E/-W	0.0 ft	Easting:	3,187,057.01 usft	Longitude:	-104.828215
Position Uncertainty		0.0 ft	Wellhead Elevation:	ft	Ground Level:	4,874.0 ft

Wellbore	Bost Farm 39N-8B-L Wellbore #1				
Magnetics	Model Name	Sample Date	Declination (°)	Dip Angle (°)	Field Strength (nT)
	HRGM	04/21/2022	7.90	66.65	51,907.96338540

Design	39N-8B-L_Final Surveys				
Audit Notes:					
Version:	1.0	Phase:	ACTUAL	Tie On Depth:	0.0
Vertical Section:	Depth From (TVD) (ft)	+N/-S (ft)	+E/-W (ft)	Direction (°)	
	0.0	0.0	0.0	100.18	

Survey Program	Date	05/16/2022			
From (ft)	To (ft)	Survey (Wellbore)	Tool Name	Description	
161.5	17,923.0	Surface (Bost Farm 39N-8B-L Wellbore #1	MWD	MWD - Standard	

Survey										
Measured Depth (ft)	Inclination (°)	Azimuth (°)	Vertical Depth (ft)	+N/-S (ft)	+E/-W (ft)	Vertical Section (ft)	Dogleg Rate (°/100usft)	Build Rate (°/100usft)	Turn Rate (°/100usft)	
0.0	0.00	0.00	0.0	0.0	0.0	0.0	0.00	0.00	0.00	
161.5	0.40	210.40	161.5	-0.5	-0.3	-0.2	0.25	0.25	0.00	
252.5	0.50	226.40	252.5	-1.0	-0.7	-0.5	0.18	0.11	17.58	
344.5	0.40	186.30	344.5	-1.6	-1.1	-0.8	0.35	-0.11	-43.59	
433.5	0.40	273.30	433.5	-1.9	-1.4	-1.0	0.62	0.00	97.75	
522.5	0.70	251.20	522.5	-2.1	-2.2	-1.8	0.41	0.34	-24.83	
612.5	0.90	266.70	612.5	-2.3	-3.5	-3.0	0.33	0.22	17.22	
702.5	1.10	225.00	702.5	-2.9	-4.8	-4.2	0.82	0.22	-46.33	
787.6	3.11	232.09	787.5	-4.9	-7.2	-6.2	2.37	2.36	8.33	
Fox Hills Aq Base										
791.5	3.20	232.20	791.4	-5.1	-7.3	-6.3	2.37	2.37	2.86	

Company:	PDC Energy Inc. DJ Basin	Local Co-ordinate Reference:	Well Bost Farm 39N-8B-L
Project:	SEC.7-T5N-R66W	TVD Reference:	WELL @ 4902ft (Patterson 272 - RKB 28')
Site:	Bost Farms 5-7 Pad SEC.7-T5N-R66W	MD Reference:	WELL @ 4902ft (Patterson 272 - RKB 28')
Well:	Bost Farm 39N-8B-L	North Reference:	True
Wellbore:	Bost Farm 39N-8B-L Wellbore #1	Survey Calculation Method:	Minimum Curvature
Design:	39N-8B-L_Final Surveys	Database:	US_EDM

Survey

Measured Depth (ft)	Inclination (°)	Azimuth (°)	Vertical Depth (ft)	+N/-S (ft)	+E/-W (ft)	Vertical Section (ft)	Dogleg Rate (°/100usft)	Build Rate (°/100usft)	Turn Rate (°/100usft)
880.5	4.90	228.90	880.2	-9.1	-12.2	-10.4	1.93	1.91	-3.71
970.5	6.50	227.60	969.7	-15.1	-18.8	-15.9	1.78	1.78	-1.44
1,059.5	8.10	229.20	1,058.0	-22.6	-27.3	-22.9	1.81	1.80	1.80
1,149.5	10.70	229.40	1,146.8	-32.1	-38.4	-32.2	2.89	2.89	0.22
1,238.5	12.90	231.30	1,233.9	-43.7	-52.5	-43.9	2.51	2.47	2.13
1,328.5	14.80	229.10	1,321.3	-57.5	-69.0	-57.7	2.19	2.11	-2.44
1,417.5	16.70	228.00	1,406.9	-73.5	-87.1	-72.7	2.16	2.13	-1.24
1,506.5	17.40	225.20	1,492.0	-91.5	-106.0	-88.2	1.21	0.79	-3.15
1,595.5	18.10	228.50	1,576.8	-110.0	-125.8	-104.4	1.38	0.79	3.71
1,649.5	18.30	229.20	1,628.1	-121.1	-138.5	-115.0	0.55	0.37	1.30
1,779.0	17.07	225.08	1,751.5	-147.8	-167.4	-138.6	1.35	-0.95	-3.18
1,874.0	16.56	239.53	1,842.4	-164.5	-188.9	-156.9	4.42	-0.54	15.21
1,969.0	22.47	251.33	1,932.0	-177.2	-217.8	-183.1	7.45	6.22	12.42
2,063.0	29.55	253.49	2,016.4	-189.6	-257.1	-219.6	7.60	7.53	2.30
2,158.0	28.22	246.69	2,099.6	-205.1	-300.2	-259.3	3.73	-1.40	-7.16
2,252.0	26.41	242.37	2,183.1	-223.6	-339.2	-294.3	2.85	-1.93	-4.60
2,347.0	26.17	236.17	2,268.3	-245.1	-375.3	-326.1	2.90	-0.25	-6.53
2,442.0	26.39	232.07	2,353.5	-269.7	-409.4	-355.3	1.92	0.23	-4.32
2,536.0	26.55	227.95	2,437.7	-296.6	-441.4	-382.1	1.96	0.17	-4.38
2,631.0	24.66	228.25	2,523.3	-324.1	-472.0	-407.3	1.99	-1.99	0.32
2,725.0	24.18	226.38	2,608.9	-350.4	-500.6	-430.8	0.97	-0.51	-1.99
2,820.0	23.47	227.22	2,695.8	-376.7	-528.5	-453.7	0.83	-0.75	0.88
2,915.0	22.57	227.35	2,783.3	-401.9	-555.8	-476.1	0.95	-0.95	0.14
3,009.0	21.92	226.67	2,870.3	-426.1	-581.9	-497.4	0.74	-0.69	-0.72
3,104.0	22.33	228.39	2,958.3	-450.3	-608.3	-519.1	0.81	0.43	1.81
3,199.0	22.59	228.74	3,046.1	-474.3	-635.5	-541.7	0.31	0.27	0.37
3,294.0	21.89	228.77	3,134.0	-498.0	-662.5	-564.1	0.74	-0.74	0.03
3,389.0	22.58	227.91	3,221.9	-521.9	-689.4	-586.3	0.80	0.73	-0.91
3,484.0	21.21	227.13	3,310.1	-545.8	-715.5	-607.8	1.47	-1.44	-0.82
3,578.0	22.49	227.72	3,397.3	-569.5	-741.2	-629.0	1.38	1.36	0.63
3,673.0	21.75	227.89	3,485.3	-593.5	-767.7	-650.8	0.78	-0.78	0.18
3,767.0	21.09	226.26	3,572.8	-616.9	-792.9	-671.4	0.95	-0.70	-1.73
3,862.0	21.94	224.01	3,661.2	-641.5	-817.6	-691.4	1.25	0.89	-2.37
3,948.5	21.71	225.89	3,741.5	-664.2	-840.3	-709.7	0.85	-0.26	2.18
Parkman									
3,957.0	21.69	226.08	3,749.4	-666.4	-842.5	-711.6	0.85	-0.25	2.20
4,051.0	22.03	227.30	3,836.7	-690.4	-868.0	-732.4	0.60	0.36	1.30
4,146.0	22.61	227.52	3,924.5	-714.8	-894.6	-754.2	0.62	0.61	0.23
4,240.0	22.05	227.94	4,011.5	-738.9	-921.0	-776.0	0.62	-0.60	0.45
4,335.0	21.15	222.86	4,099.8	-763.4	-945.9	-796.2	2.18	-0.95	-5.35
4,430.0	21.76	223.45	4,188.2	-788.7	-969.7	-815.1	0.68	0.64	0.62
4,538.3	22.77	226.06	4,288.5	-817.8	-998.6	-838.4	1.31	0.93	2.41
Sussex									

Company:	PDC Energy Inc. DJ Basin	Local Co-ordinate Reference:	Well Bost Farm 39N-8B-L
Project:	SEC.7-T5N-R66W	TVD Reference:	WELL @ 4902ft (Patterson 272 - RKB 28')
Site:	Bost Farms 5-7 Pad SEC.7-T5N-R66W	MD Reference:	WELL @ 4902ft (Patterson 272 - RKB 28')
Well:	Bost Farm 39N-8B-L	North Reference:	True
Wellbore:	Bost Farm 39N-8B-L Wellbore #1	Survey Calculation Method:	Minimum Curvature
Design:	39N-8B-L_Final Surveys	Database:	US_EDM

Survey

Measured Depth (ft)	Inclination (°)	Azimuth (°)	Vertical Depth (ft)	+N/-S (ft)	+E/-W (ft)	Vertical Section (ft)	Dogleg Rate (°/100usft)	Build Rate (°/100usft)	Turn Rate (°/100usft)
4,619.0	23.55	227.87	4,362.7	-839.5	-1,021.8	-857.4	1.31	0.97	2.24
4,714.0	23.83	229.12	4,449.7	-864.8	-1,050.4	-881.1	0.61	0.29	1.32
4,904.0	22.72	231.44	4,624.2	-912.8	-1,108.1	-929.4	0.76	-0.58	1.22
5,093.0	24.36	231.87	4,797.5	-959.6	-1,167.3	-979.4	0.87	0.87	0.23
5,188.0	24.44	231.28	4,884.0	-984.0	-1,198.0	-1,005.3	0.27	0.08	-0.62
5,241.3	24.46	230.72	4,932.5	-997.9	-1,215.2	-1,019.8	0.44	0.03	-1.05
Shannon									
5,283.0	24.47	230.28	4,970.5	-1,008.8	-1,228.5	-1,030.9	0.44	0.03	-1.05
5,472.0	22.58	227.61	5,143.8	-1,058.3	-1,285.4	-1,078.2	1.15	-1.00	-1.41
5,661.0	23.37	229.78	5,317.8	-1,107.0	-1,340.8	-1,124.2	0.61	0.42	1.15
5,851.0	24.21	229.75	5,491.6	-1,156.5	-1,399.3	-1,173.0	0.44	0.44	-0.02
5,945.0	23.74	229.65	5,577.5	-1,181.2	-1,428.5	-1,197.3	0.50	-0.50	-0.11
6,040.0	24.15	229.63	5,664.3	-1,206.2	-1,457.8	-1,221.8	0.43	0.43	-0.02
6,230.0	23.19	227.10	5,838.3	-1,256.8	-1,514.9	-1,269.0	0.74	-0.51	-1.33
6,419.0	23.87	230.32	6,011.6	-1,306.6	-1,571.6	-1,316.0	0.77	0.36	1.70
6,609.0	23.20	231.05	6,185.8	-1,354.6	-1,630.3	-1,365.3	0.38	-0.35	0.38
6,703.0	21.90	218.12	6,272.7	-1,380.1	-1,655.5	-1,385.6	5.44	-1.38	-13.76
6,798.0	14.71	198.63	6,362.9	-1,405.5	-1,670.3	-1,395.7	9.84	-7.57	-20.52
6,892.0	12.65	164.16	6,454.4	-1,426.8	-1,671.3	-1,393.0	8.80	-2.19	-36.67
6,987.0	16.70	138.69	6,546.4	-1,447.1	-1,659.5	-1,377.7	7.92	4.26	-26.81
7,082.0	21.78	124.76	6,636.1	-1,467.4	-1,635.9	-1,351.0	7.17	5.35	-14.66
7,176.0	28.20	121.11	6,721.2	-1,488.8	-1,602.6	-1,314.3	7.02	6.83	-3.88
7,271.0	35.90	116.87	6,801.7	-1,513.0	-1,558.4	-1,266.6	8.44	8.11	-4.46
7,365.0	43.76	112.54	6,873.9	-1,538.0	-1,503.7	-1,208.3	8.86	8.36	-4.61
7,435.3	48.71	108.74	6,922.5	-1,555.8	-1,456.2	-1,158.4	8.04	7.03	-5.40
Sharon Springs									
7,460.0	50.47	107.55	6,938.5	-1,561.7	-1,438.3	-1,139.8	8.04	7.14	-4.84
7,493.3	51.37	105.48	6,959.5	-1,569.0	-1,413.5	-1,114.1	5.54	2.71	-6.22
Niobrara A									
7,555.0	53.14	101.78	6,997.3	-1,580.5	-1,366.2	-1,065.4	5.54	2.86	-6.00
7,649.0	61.39	99.78	7,048.0	-1,595.2	-1,288.5	-986.4	8.96	8.78	-2.13
7,737.5	67.08	100.95	7,086.5	-1,609.6	-1,210.2	-906.8	6.54	6.43	1.32
Niobrara B									
7,744.0	67.50	101.03	7,089.0	-1,610.7	-1,204.3	-900.8	6.54	6.44	1.26
7,839.0	77.24	99.07	7,117.7	-1,626.5	-1,115.2	-810.4	10.44	10.25	-2.06
7,933.0	86.97	93.32	7,130.7	-1,636.4	-1,022.8	-717.6	11.99	10.35	-6.12
7,957.7	87.43	93.18	7,131.9	-1,637.8	-998.2	-693.1	1.93	1.85	-0.55
LP (1201' FSL, 150' FWL)									
8,028.0	88.73	92.80	7,134.2	-1,641.5	-928.0	-623.4	1.93	1.85	-0.55
8,122.0	86.55	93.25	7,138.1	-1,646.4	-834.3	-530.2	2.37	-2.32	0.48
8,217.0	87.49	91.86	7,143.0	-1,650.7	-739.5	-436.2	1.76	0.99	-1.46
8,312.0	86.67	90.27	7,147.9	-1,652.4	-644.6	-342.5	1.88	-0.86	-1.67
8,406.0	86.56	89.56	7,153.4	-1,652.3	-550.8	-250.2	0.76	-0.12	-0.76
8,501.0	85.95	89.92	7,159.6	-1,651.9	-456.0	-157.0	0.75	-0.64	0.38

Company:	PDC Energy Inc. DJ Basin	Local Co-ordinate Reference:	Well Bost Farm 39N-8B-L
Project:	SEC.7-T5N-R66W	TVD Reference:	WELL @ 4902ft (Patterson 272 - RKB 28')
Site:	Bost Farms 5-7 Pad SEC.7-T5N-R66W	MD Reference:	WELL @ 4902ft (Patterson 272 - RKB 28')
Well:	Bost Farm 39N-8B-L	North Reference:	True
Wellbore:	Bost Farm 39N-8B-L Wellbore #1	Survey Calculation Method:	Minimum Curvature
Design:	39N-8B-L_Final Surveys	Database:	US_EDM

Survey

Measured Depth (ft)	Inclination (°)	Azimuth (°)	Vertical Depth (ft)	+N/-S (ft)	+E/-W (ft)	Vertical Section (ft)	Dogleg Rate (°/100usft)	Build Rate (°/100usft)	Turn Rate (°/100usft)
8,596.0	85.91	90.12	7,166.4	-1,651.9	-361.2	-63.7	0.21	-0.04	0.21
8,691.0	86.58	91.65	7,172.6	-1,653.4	-266.4	29.8	1.76	0.71	1.61
8,785.0	85.82	92.63	7,178.8	-1,656.9	-172.7	122.7	1.32	-0.81	1.04
8,880.0	87.12	92.19	7,184.7	-1,660.9	-78.0	216.7	1.44	1.37	-0.46
8,975.0	86.51	93.88	7,189.9	-1,665.9	16.7	310.8	1.89	-0.64	1.78
9,070.0	86.59	91.94	7,195.7	-1,670.7	111.4	404.8	2.04	0.08	-2.04
9,164.0	88.57	91.83	7,199.6	-1,673.8	205.3	497.8	2.11	2.11	-0.12
9,259.0	88.34	92.35	7,202.2	-1,677.2	300.2	591.8	0.60	-0.24	0.55
9,354.0	88.73	90.13	7,204.6	-1,679.3	395.1	685.6	2.37	0.41	-2.34
9,448.0	90.48	89.05	7,205.3	-1,678.6	489.1	778.0	2.19	1.86	-1.15
9,543.0	90.16	89.71	7,204.7	-1,677.6	584.1	871.3	0.77	-0.34	0.69
9,732.0	89.91	89.16	7,204.6	-1,675.7	773.1	1,057.0	0.32	-0.13	-0.29
9,920.0	90.85	89.15	7,203.4	-1,673.0	961.1	1,241.5	0.50	0.50	-0.01
10,109.0	90.92	89.66	7,200.5	-1,671.0	1,150.0	1,427.2	0.27	0.04	0.27
10,297.0	90.14	89.78	7,198.7	-1,670.1	1,338.0	1,612.0	0.42	-0.41	0.06
10,391.0	90.31	89.31	7,198.4	-1,669.3	1,432.0	1,704.4	0.53	0.18	-0.50
10,485.0	89.38	89.35	7,198.6	-1,668.2	1,526.0	1,796.7	0.99	-0.99	0.04
10,674.0	89.43	90.25	7,200.6	-1,667.6	1,715.0	1,982.6	0.48	0.03	0.48
10,768.0	89.34	89.69	7,201.6	-1,667.5	1,809.0	2,075.2	0.60	-0.10	-0.60
10,957.0	90.14	89.81	7,202.4	-1,666.7	1,998.0	2,261.0	0.43	0.42	0.06
11,052.0	89.92	89.21	7,202.4	-1,665.9	2,093.0	2,354.4	0.67	-0.23	-0.63
11,146.0	89.56	90.49	7,202.8	-1,665.6	2,187.0	2,446.9	1.41	-0.38	1.36
11,335.0	90.32	89.21	7,203.0	-1,665.2	2,376.0	2,632.8	0.79	0.40	-0.68
11,524.0	90.18	89.61	7,202.2	-1,663.2	2,565.0	2,818.5	0.22	-0.07	0.21
11,712.0	89.94	89.56	7,202.0	-1,661.8	2,753.0	3,003.3	0.13	-0.13	-0.03
11,901.0	90.23	89.40	7,201.7	-1,660.1	2,942.0	3,189.0	0.18	0.15	-0.08
11,994.0	90.55	90.01	7,201.1	-1,659.6	3,035.0	3,280.4	0.74	0.34	0.66
12,089.0	90.50	89.34	7,200.2	-1,659.1	3,129.9	3,373.8	0.71	-0.05	-0.71
12,183.0	90.97	88.85	7,199.0	-1,657.6	3,223.9	3,466.1	0.72	0.50	-0.52
12,277.0	90.76	90.06	7,197.6	-1,656.7	3,317.9	3,558.4	1.31	-0.22	1.29
12,371.0	91.51	89.94	7,195.7	-1,656.7	3,411.9	3,650.9	0.81	0.80	-0.13
12,464.0	90.79	89.64	7,193.9	-1,656.4	3,504.9	3,742.4	0.84	-0.77	-0.32
12,558.0	90.07	89.98	7,193.1	-1,656.1	3,598.9	3,834.8	0.85	-0.77	0.36
12,652.0	89.76	90.29	7,193.3	-1,656.3	3,692.9	3,927.4	0.47	-0.33	0.33
12,841.0	90.22	89.84	7,193.3	-1,656.5	3,881.9	4,113.5	0.34	0.24	-0.24
12,935.0	89.99	89.88	7,193.1	-1,656.3	3,975.9	4,205.9	0.25	-0.24	0.04
13,029.0	89.27	90.78	7,193.8	-1,656.8	4,069.9	4,298.6	1.23	-0.77	0.96
13,123.0	90.07	88.98	7,194.3	-1,656.6	4,163.9	4,391.0	2.10	0.85	-1.91
13,218.0	89.99	88.84	7,194.2	-1,654.8	4,258.8	4,484.2	0.17	-0.08	-0.15
13,312.0	89.52	88.99	7,194.6	-1,653.0	4,352.8	4,576.4	0.52	-0.50	0.16
13,407.0	90.14	88.29	7,194.9	-1,650.8	4,447.8	4,669.5	0.98	0.65	-0.74
13,501.0	90.53	88.14	7,194.4	-1,647.9	4,541.7	4,761.4	0.44	0.41	-0.16
13,595.0	89.65	88.58	7,194.2	-1,645.2	4,635.7	4,853.4	1.05	-0.94	0.47
13,784.0	89.97	88.75	7,194.9	-1,640.8	4,824.6	5,038.6	0.19	0.17	0.09

Company:	PDC Energy Inc. DJ Basin	Local Co-ordinate Reference:	Well Bost Farm 39N-8B-L
Project:	SEC.7-T5N-R66W	TVD Reference:	WELL @ 4902ft (Patterson 272 - RKB 28')
Site:	Bost Farms 5-7 Pad SEC.7-T5N-R66W	MD Reference:	WELL @ 4902ft (Patterson 272 - RKB 28')
Well:	Bost Farm 39N-8B-L	North Reference:	True
Wellbore:	Bost Farm 39N-8B-L Wellbore #1	Survey Calculation Method:	Minimum Curvature
Design:	39N-8B-L_Final Surveys	Database:	US_EDM

Survey

Measured Depth (ft)	Inclination (°)	Azimuth (°)	Vertical Depth (ft)	+N/-S (ft)	+E/-W (ft)	Vertical Section (ft)	Dogleg Rate (°/100usft)	Build Rate (°/100usft)	Turn Rate (°/100usft)
13,878.0	90.13	88.96	7,194.8	-1,638.9	4,918.6	5,130.8	0.28	0.17	0.22
13,973.0	89.78	88.97	7,194.9	-1,637.2	5,013.6	5,224.0	0.37	-0.37	0.01
14,067.0	90.28	88.71	7,194.8	-1,635.3	5,107.6	5,316.2	0.60	0.53	-0.28
14,161.0	90.06	88.25	7,194.5	-1,632.8	5,201.6	5,408.2	0.54	-0.23	-0.49
14,256.0	90.36	88.32	7,194.2	-1,629.9	5,296.5	5,501.2	0.32	0.32	0.07
14,351.0	90.07	89.19	7,193.8	-1,627.9	5,391.5	5,594.3	0.97	-0.31	0.92
14,445.0	90.47	89.30	7,193.4	-1,626.6	5,485.5	5,686.6	0.44	0.43	0.12
14,539.0	90.60	89.34	7,192.5	-1,625.5	5,579.5	5,778.9	0.14	0.14	0.04
14,728.0	89.99	89.27	7,191.5	-1,623.2	5,768.5	5,964.5	0.32	-0.32	-0.04
14,916.0	90.44	89.45	7,190.8	-1,621.1	5,956.4	6,149.2	0.26	0.24	0.10
15,010.0	90.32	89.74	7,190.2	-1,620.5	6,050.4	6,241.6	0.33	-0.13	0.31
15,104.0	89.92	90.26	7,190.0	-1,620.5	6,144.4	6,334.1	0.70	-0.43	0.55
15,292.0	90.80	90.15	7,188.8	-1,621.1	6,332.4	6,519.2	0.47	0.47	-0.06
15,386.0	90.48	90.06	7,187.8	-1,621.3	6,426.4	6,611.8	0.35	-0.34	-0.10
15,481.0	90.57	90.15	7,186.9	-1,621.5	6,521.4	6,705.3	0.13	0.09	0.09
15,669.0	90.59	90.00	7,185.0	-1,621.7	6,709.4	6,890.4	0.08	0.01	-0.08
15,763.0	90.62	89.77	7,184.0	-1,621.5	6,803.4	6,982.9	0.25	0.03	-0.24
15,857.0	90.47	90.05	7,183.1	-1,621.4	6,897.4	7,075.4	0.34	-0.16	0.30
16,045.0	89.94	90.05	7,182.4	-1,621.6	7,085.4	7,260.4	0.28	-0.28	0.00
16,233.0	90.51	89.71	7,181.7	-1,621.2	7,273.4	7,445.4	0.35	0.30	-0.18
16,327.0	90.01	90.00	7,181.3	-1,620.9	7,367.4	7,537.9	0.61	-0.53	0.31
16,515.0	89.63	90.51	7,181.9	-1,621.8	7,555.4	7,723.1	0.34	-0.20	0.27
16,703.0	89.51	90.62	7,183.3	-1,623.6	7,743.4	7,908.4	0.09	-0.06	0.06
16,797.0	89.34	89.90	7,184.2	-1,624.0	7,837.4	8,001.0	0.79	-0.18	-0.77
16,892.0	89.58	89.31	7,185.1	-1,623.4	7,932.4	8,094.4	0.67	0.25	-0.62
16,986.0	89.46	89.25	7,185.9	-1,622.2	8,026.4	8,186.7	0.14	-0.13	-0.06
17,174.0	89.30	89.69	7,187.9	-1,620.5	8,214.3	8,371.4	0.25	-0.09	0.23
17,269.0	89.53	89.22	7,188.9	-1,619.6	8,309.3	8,464.7	0.55	0.24	-0.49
17,457.0	89.61	89.15	7,190.3	-1,616.9	8,497.3	8,649.3	0.06	0.04	-0.04
17,551.0	89.41	89.28	7,191.1	-1,615.6	8,591.3	8,741.6	0.25	-0.21	0.14
17,645.0	89.51	89.00	7,192.0	-1,614.2	8,685.3	8,833.8	0.32	0.11	-0.30
17,740.0	89.64	89.09	7,192.7	-1,612.6	8,780.3	8,927.0	0.17	0.14	0.09
17,834.0	89.49	88.85	7,193.4	-1,610.9	8,874.2	9,019.2	0.30	-0.16	-0.26
17,895.0	89.71	88.60	7,193.8	-1,609.6	8,935.2	9,079.0	0.55	0.36	-0.41
17,923.0	89.71	88.60	7,194.0	-1,608.9	8,963.2	9,106.5	0.00	0.00	0.00

BHL (1223' FSL, 465.4' FEL)

Company:	PDC Energy Inc. DJ Basin	Local Co-ordinate Reference:	Well Bost Farm 39N-8B-L
Project:	SEC.7-T5N-R66W	TVD Reference:	WELL @ 4902ft (Patterson 272 - RKB 28')
Site:	Bost Farms 5-7 Pad SEC.7-T5N-R66W	MD Reference:	WELL @ 4902ft (Patterson 272 - RKB 28')
Well:	Bost Farm 39N-8B-L	North Reference:	True
Wellbore:	Bost Farm 39N-8B-L Wellbore #1	Survey Calculation Method:	Minimum Curvature
Design:	39N-8B-L_Final Surveys	Database:	US_EDM

Formations					
Measured Depth (ft)	Vertical Depth (ft)	Name	Lithology	Dip (°)	Dip Direction (°)
787.6	787.5	Fox Hills Aq Base			
3,948.5	3,741.5	Parkman			
4,538.3	4,288.5	Sussex			
5,241.3	4,932.5	Shannon			
7,435.3	6,922.5	Sharon Springs			
7,493.3	6,959.5	Niobrara A			
7,737.5	7,086.5	Niobrara B			

Survey Annotations					
Measured Depth (ft)	Vertical Depth (ft)	Local Coordinates		Comment	
		+N/-S (ft)	+E/-W (ft)		
7,957.7	7,131.9	-1,637.8	-998.2	LP (1201' FSL, 150' FWL)	
17,923.0	7,194.0	-1,608.9	8,963.2	BHL (1223' FSL, 465.4' FEL)	