

Company: PDC Energy Inc

Well: BOST FARM 39N-8B-L

Field Name: Wattenberg

Country Name: United States

State Name: Colorado

County Name: Weld

Xbolt GAMMA RAY

1in/100ft Measured Depth

Final Print

Recorded Mode

Schlumberger

Company: PDC Energy Inc

Well: BOST FARM 39N-8B-L

Field Name: Wattenberg

Country Name: United States

State Name: Colorado

County Name: Weld

Latitude: 40°24'52.718"N

Longitude: 104°49'41.574"W

Spud Date: 22-Apr-2022

Log Interval: 1680.50--17922.50(ft)

Depth Source: Driller's Depth

Log Measured From: Drill Floor

Drill Floor Elevation:4902.00(ft)

Ground Level Elevation:4874.00(ft)

Permanent Datum:Sea Level

API Number: 05-123-51447

Rig Name: Patterson 272

Rig Type: Land rig

Job Number: 22CC00033

Print Type: Final Print

Northing: 1394603.72(ft)

Easting: 3187056.88(ft)

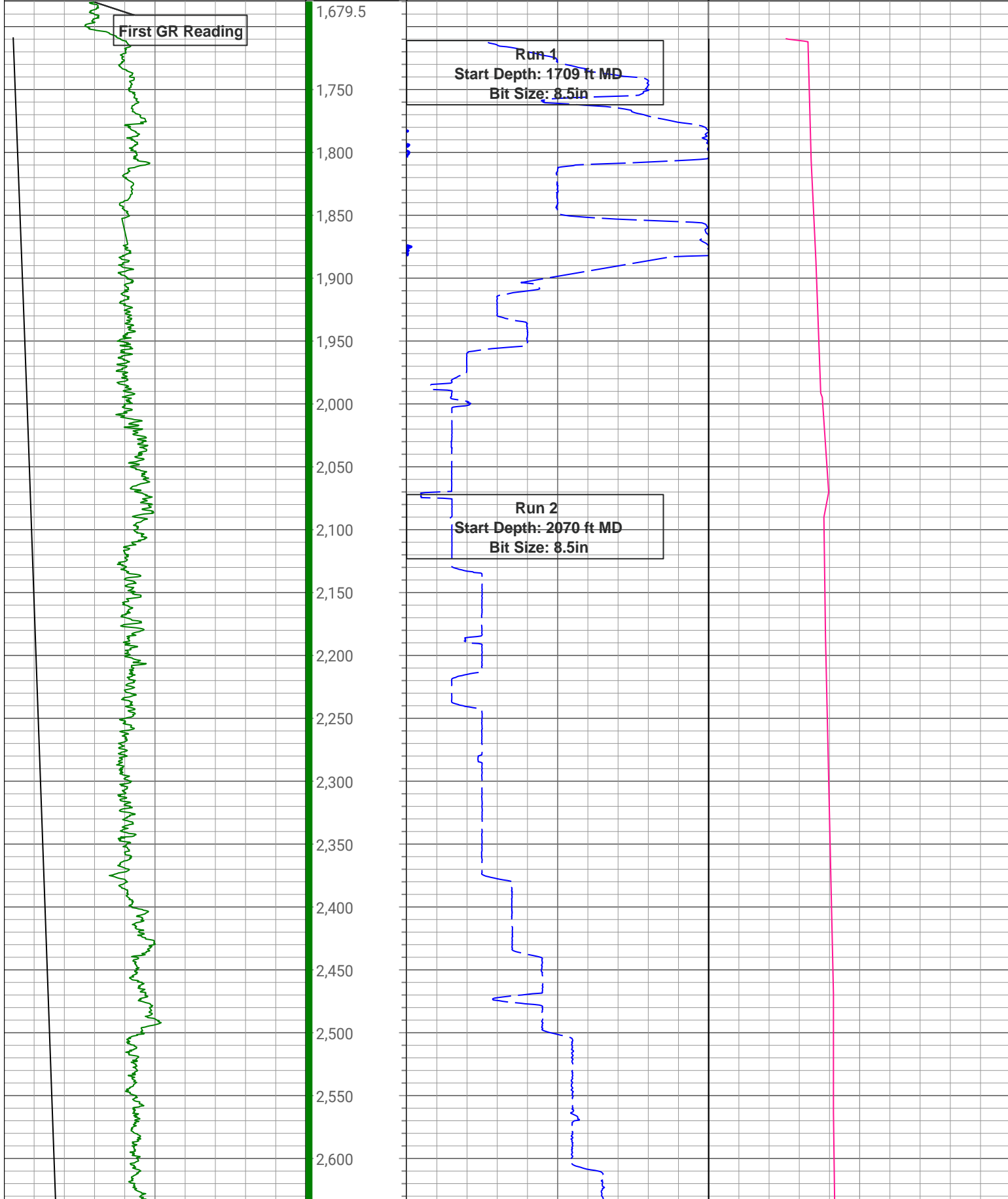
Coordinate System:Plane, Northern Zone, US Feet

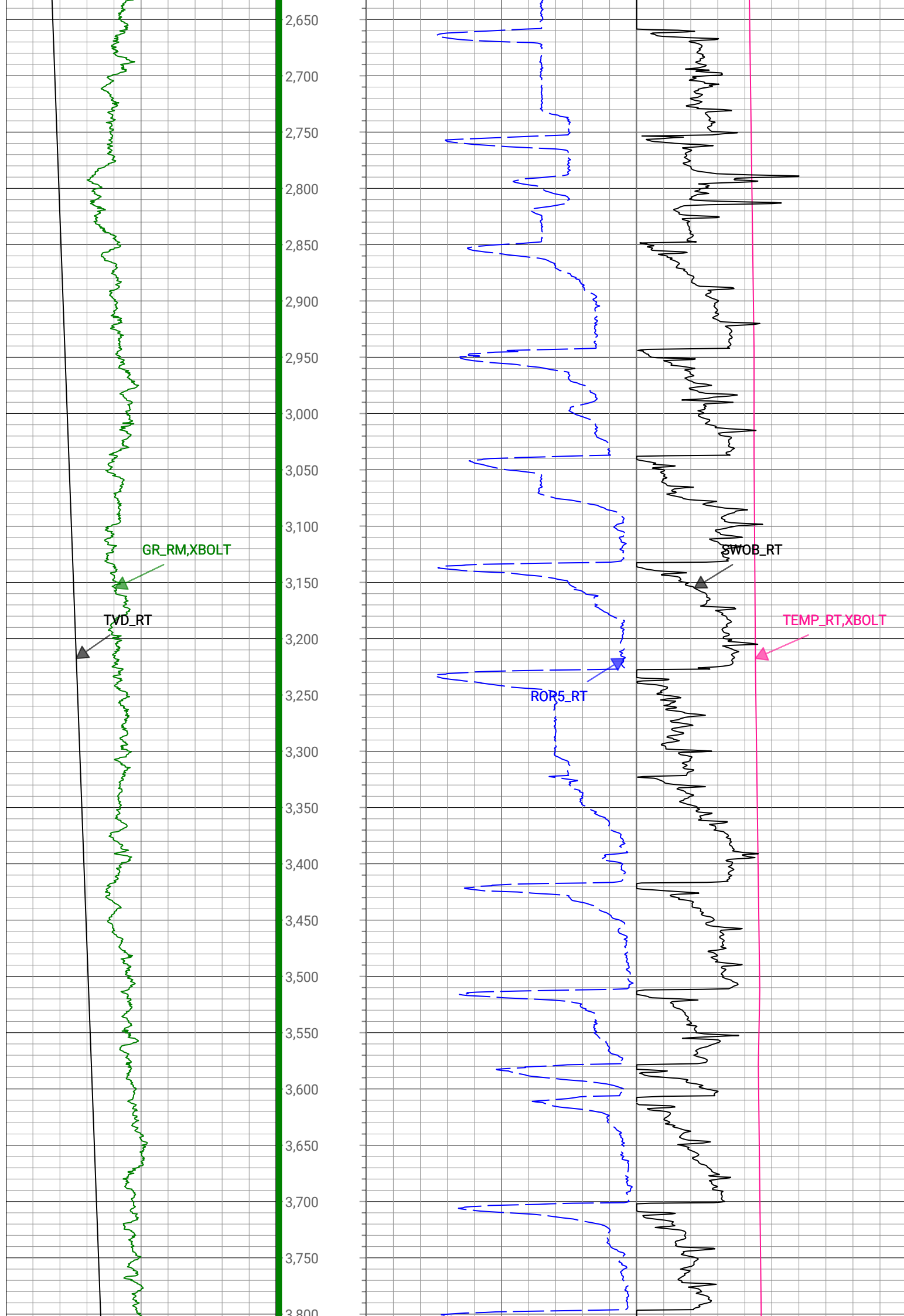
Disclaimer

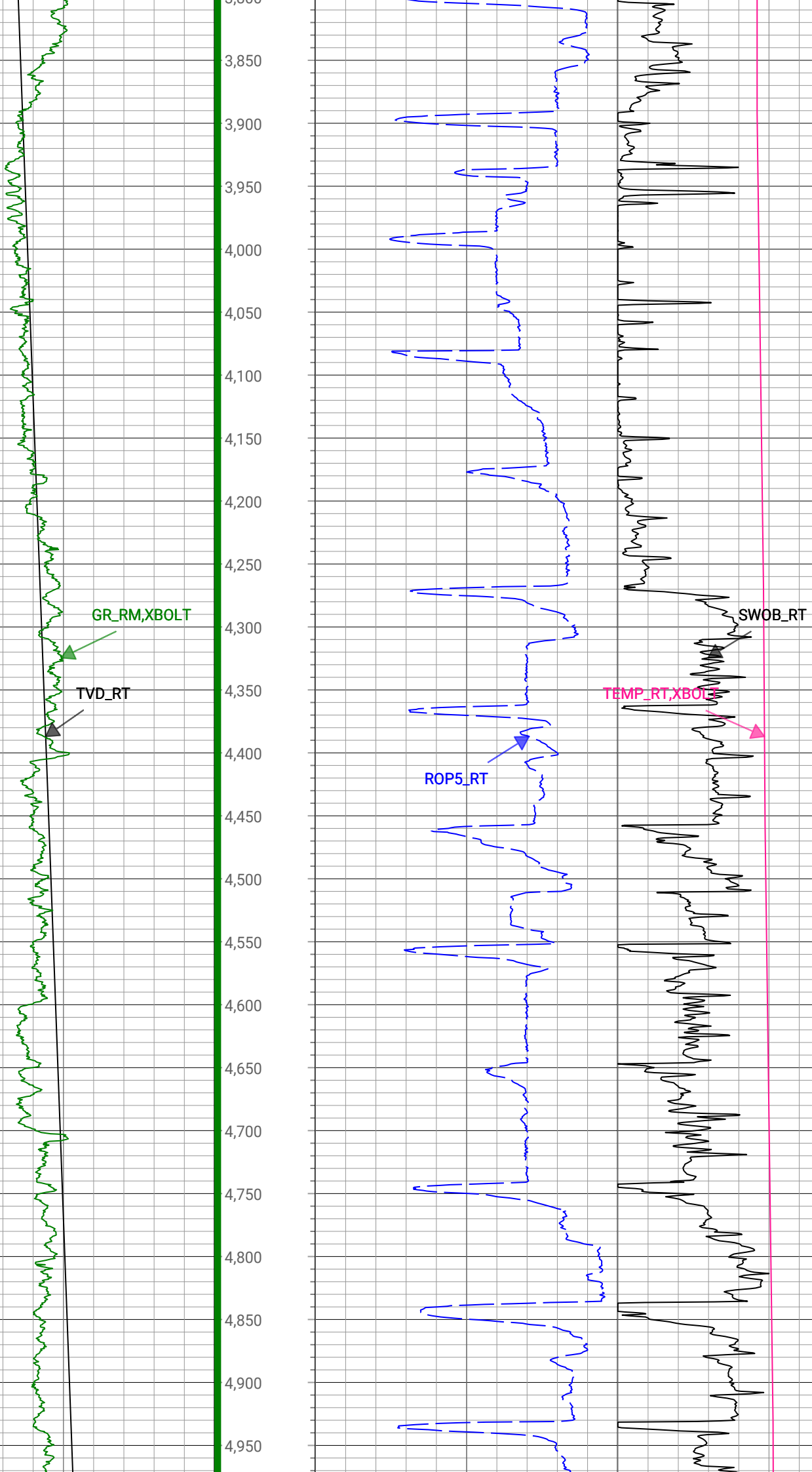
THE USE OF AND RELIANCE UPON THIS RECORDED-DATA BY THE HEREIN NAMED COMPANY (AND ANY OF ITS AFFILIATES, PARTNERS, REPRESENTATIVES, AGENTS, CONSULTANTS AND EMPLOYEES) IS SUBJECT TO THE TERMS AND CONDITIONS AGREED UPON BETWEEN SCHLUMBERGER AND THE COMPANY, INCLUDING: (a) RESTRICTIONS ON USE OF THE RECORDED-DATA; (b) DISCLAIMERS AND WAIVERS OF WARRANTIES AND REPRESENTATIONS REGARDING COMPANY'S USE AND RELIANCE UPON THE RECORDED-DATA; AND (c) CUSTOMER'S FULL AND SOLE RESPONSIBILITY FOR ANY INFERENCE DRAWN OR DECISION MADE IN CONNECTION WITH THE USE OF THIS RECORDED-DATA.

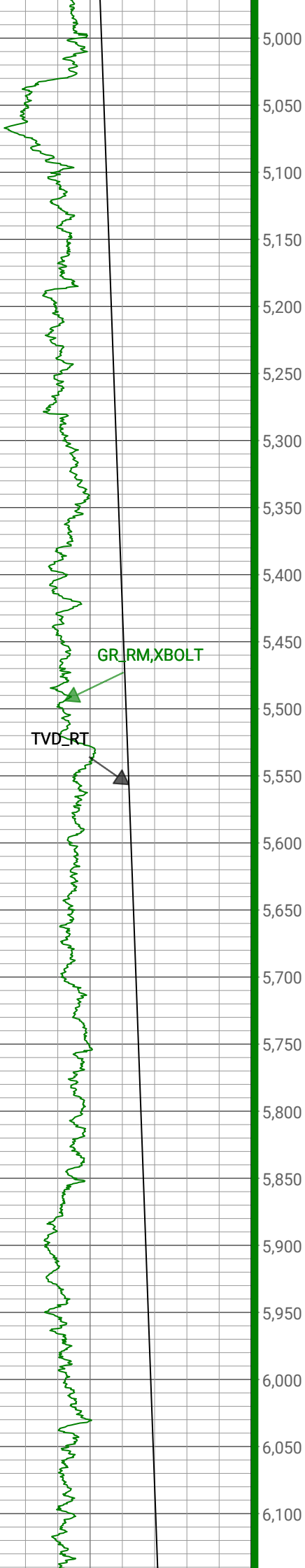
Operational Run Summary

Notes			
Run 1 (Bit Size: 8.5 in)			
DateTime Log Started	22-Apr-2022 20:22:27	DateTime Log Finished	23-Apr-2022 05:34:49
Start Depth (ft)	1709	Stop Depth (ft)	2070
Mud Type	Oil Based Mud	Mud Density (lbm/gal)	10
Potassium (%)	0	Barite	Yes
GR Sensor Offset (ft)	29.85	Calibration Coefficient	1
DNI Sensor Offset (ft)	26.02		
Run 2 (Bit Size: 8.5 in)			
DateTime Log Started	23-Apr-2022 05:34:50	DateTime Log Finished	25-Apr-2022 23:15:20
Start Depth (ft)	2070	Stop Depth (ft)	17923
Mud Type	Oil Based Mud	Mud Density (lbm/gal)	10
Potassium (%)	0	Barite	Yes
GR Sensor Offset (ft)	29.79	Calibration Coefficient	1

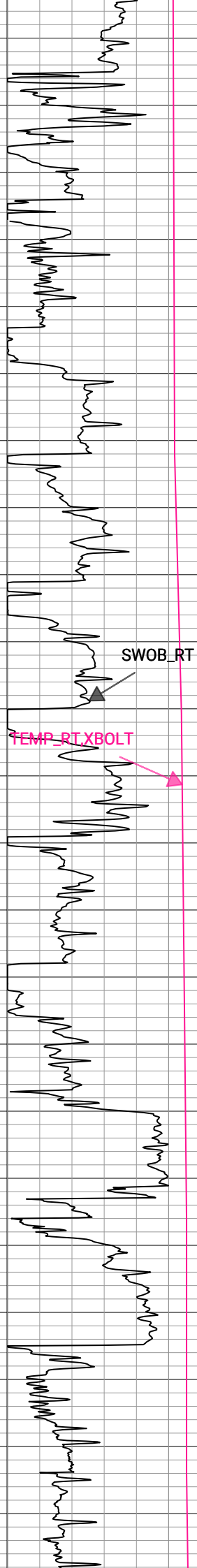
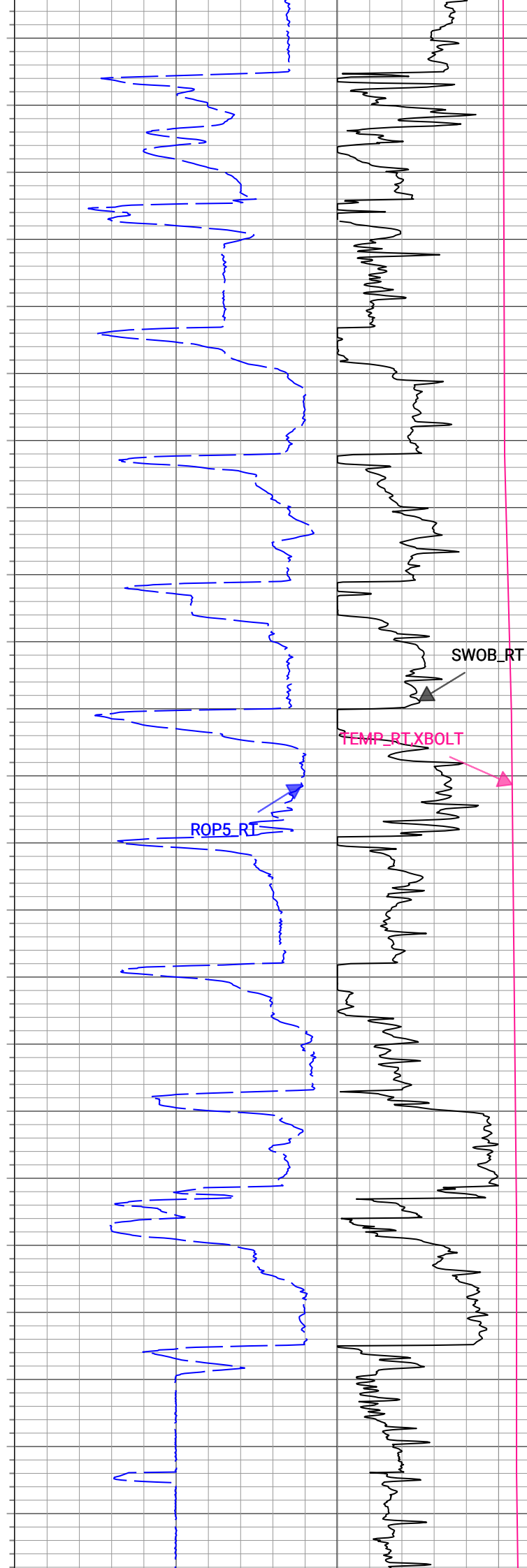


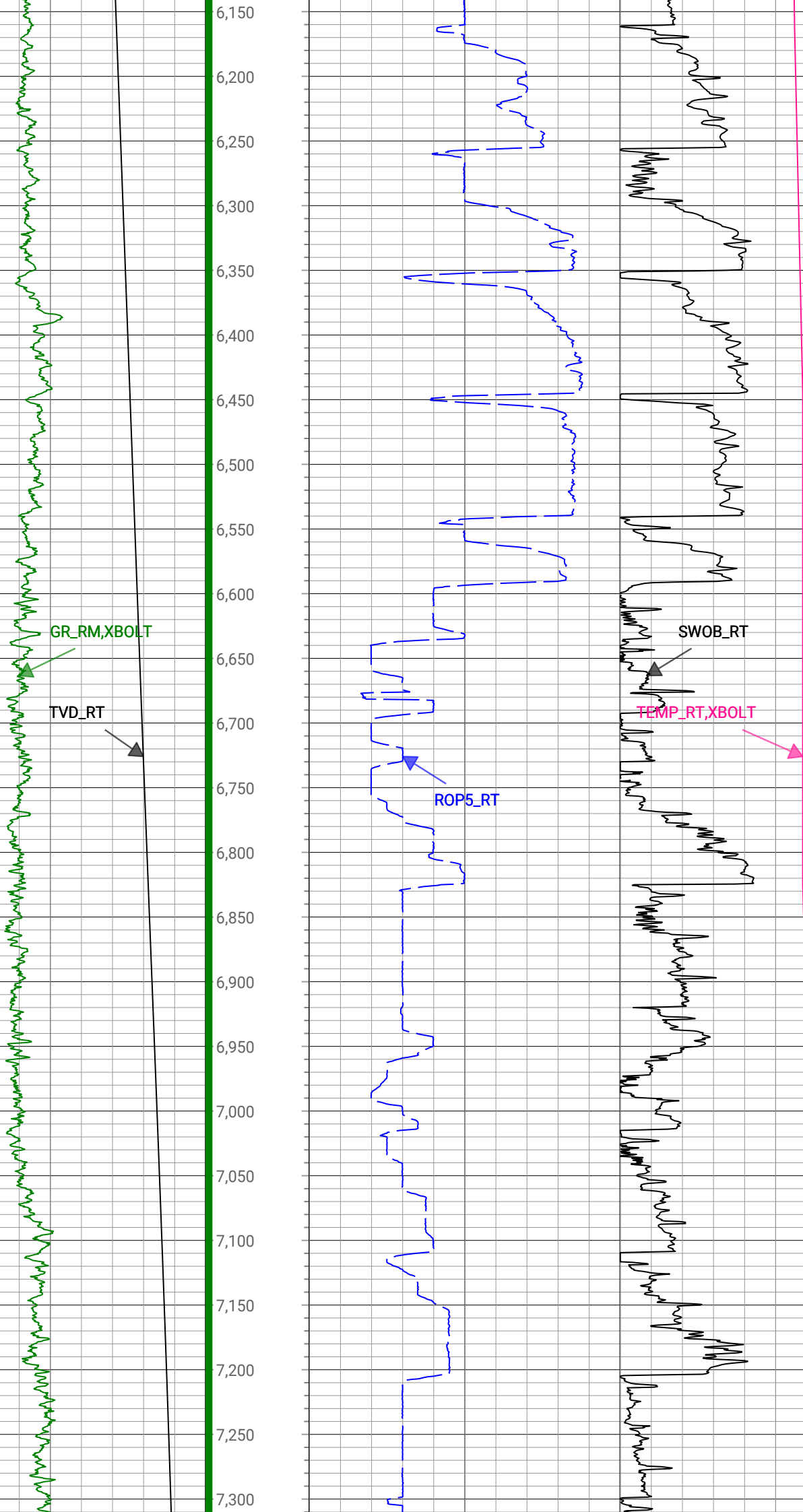


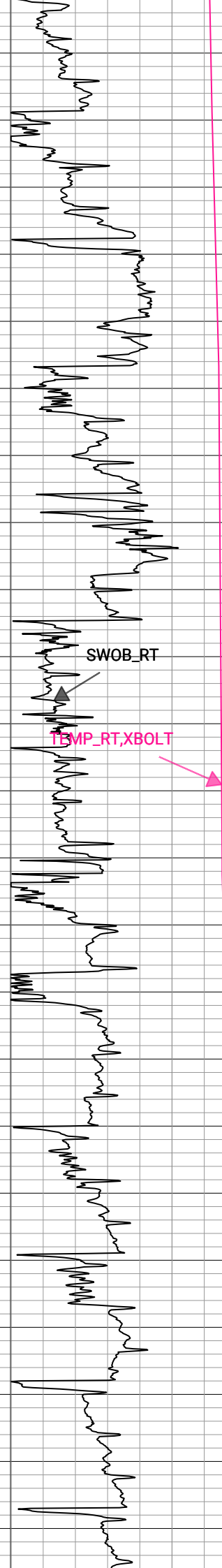
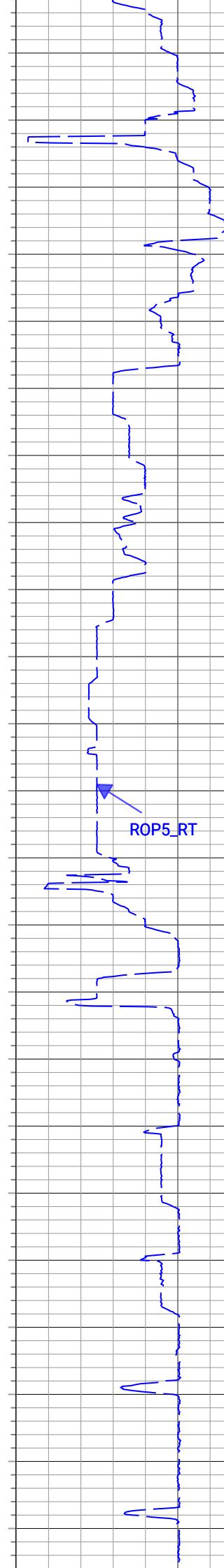
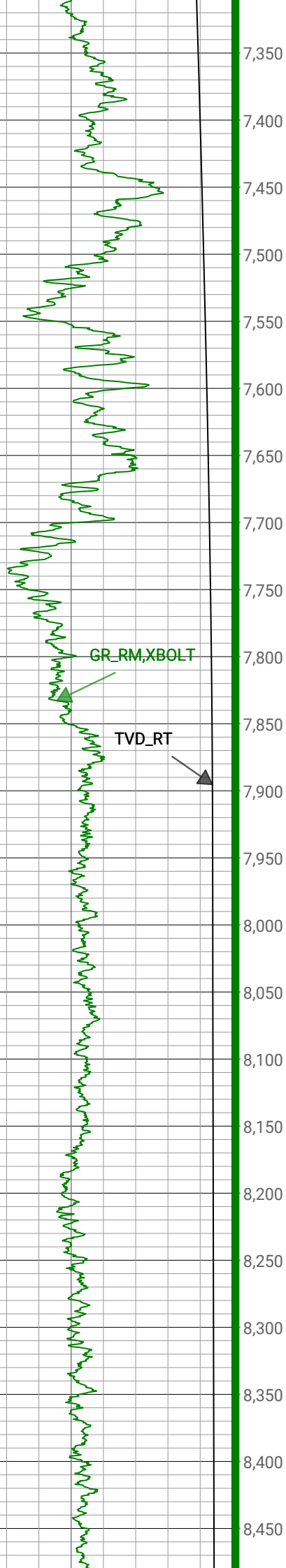


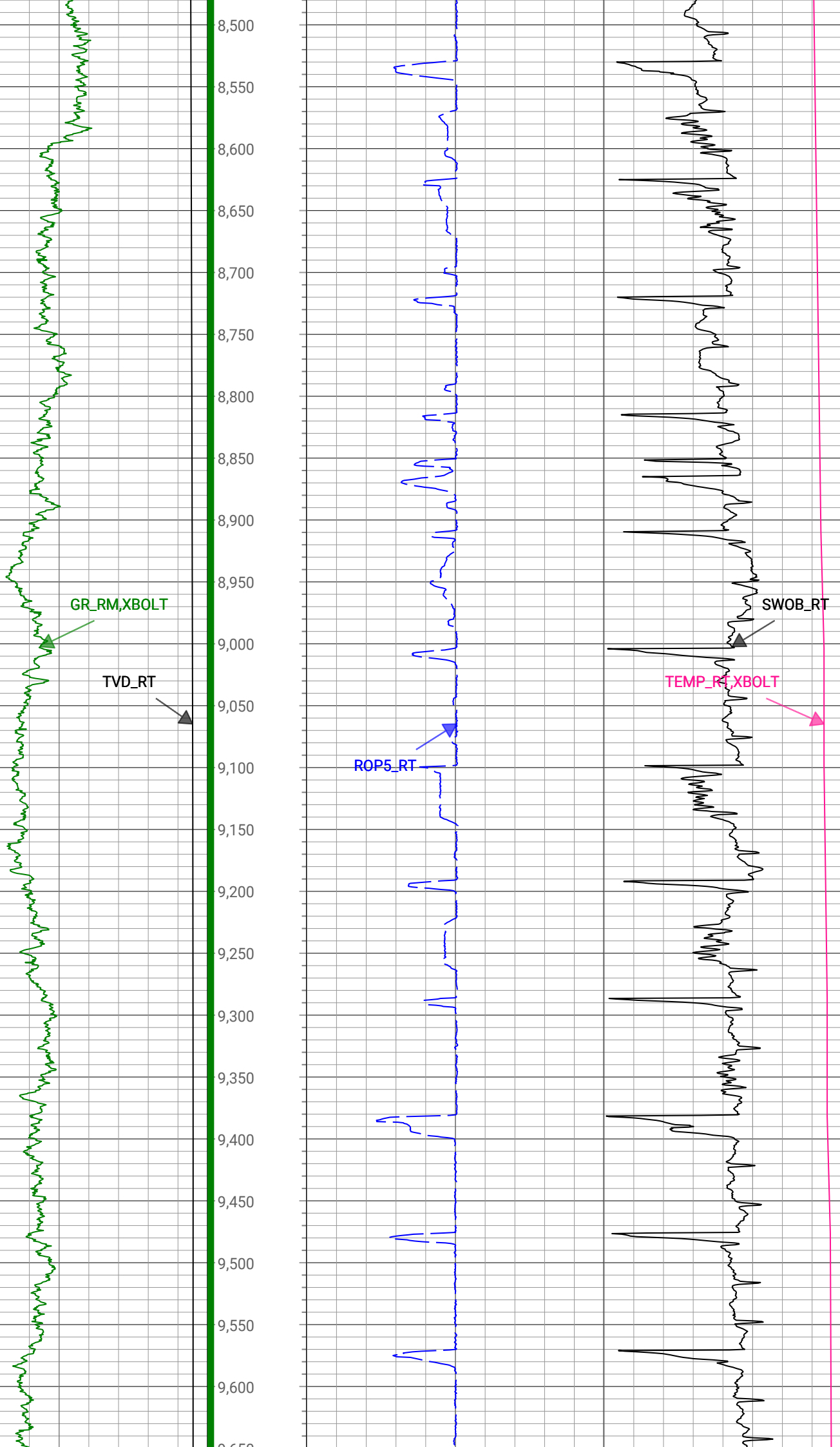


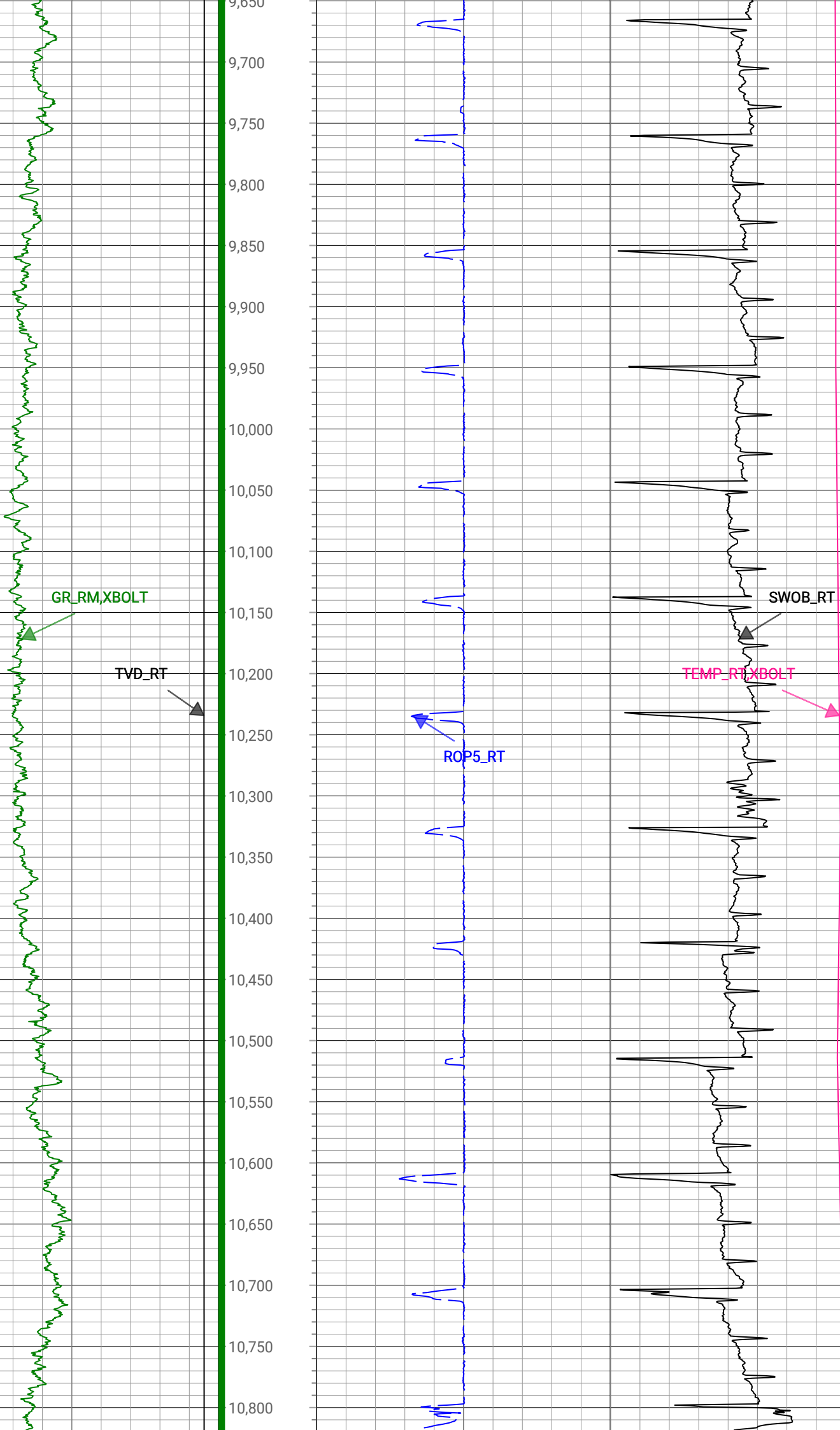
5,000
5,050
5,100
5,150
5,200
5,250
5,300
5,350
5,400
5,450
5,500
5,550
5,600
5,650
5,700
5,750
5,800
5,850
5,900
5,950
6,000
6,050
6,100

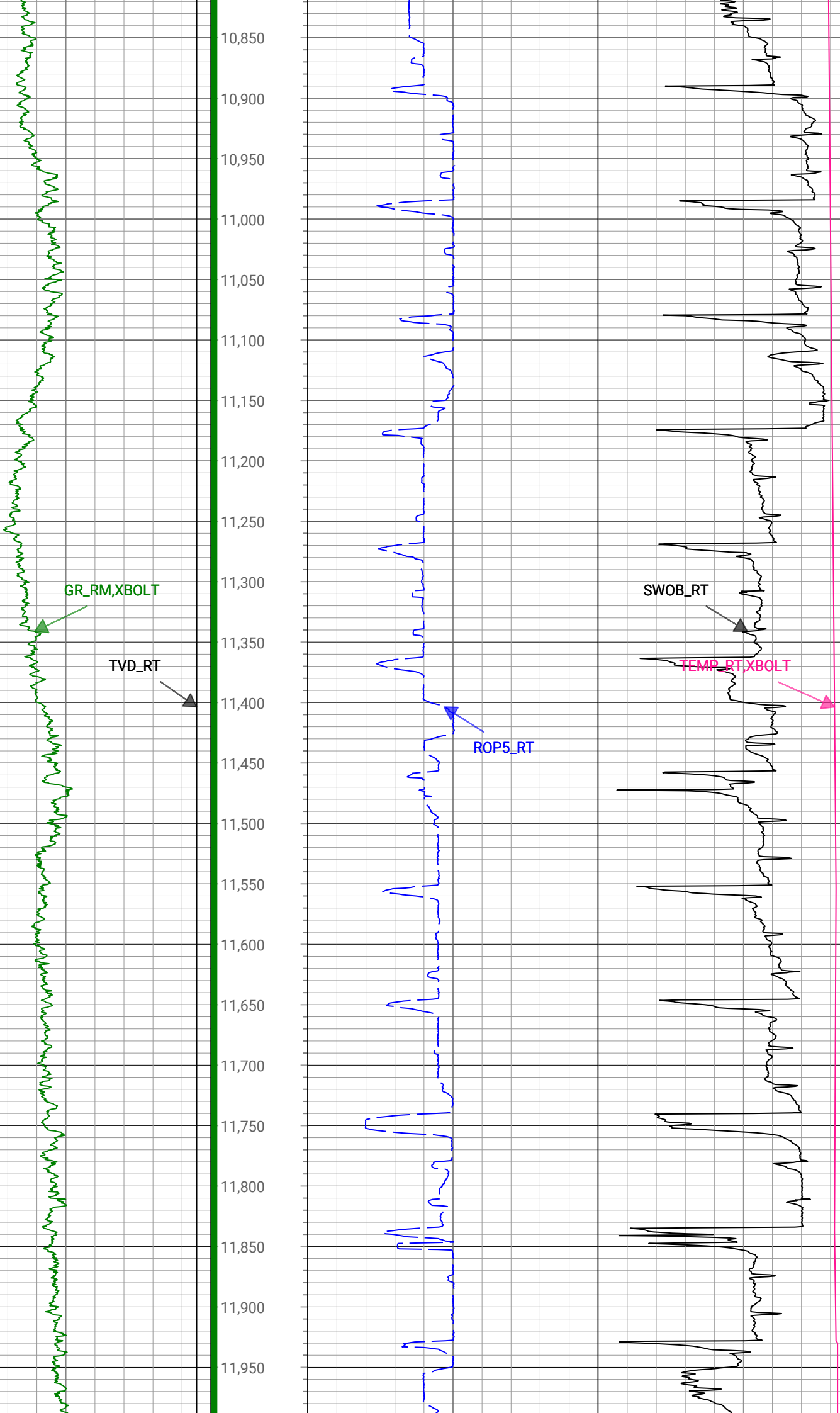


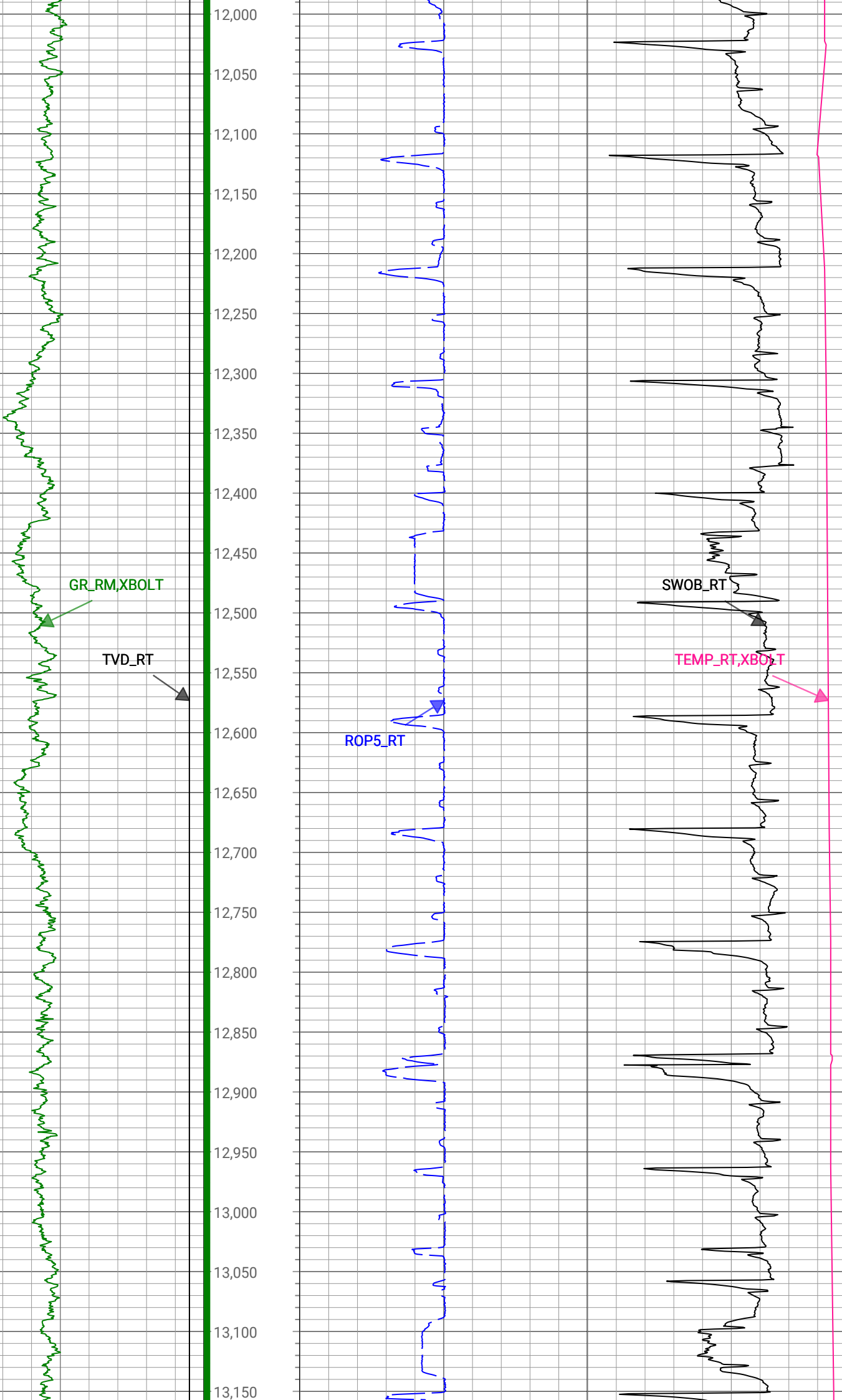


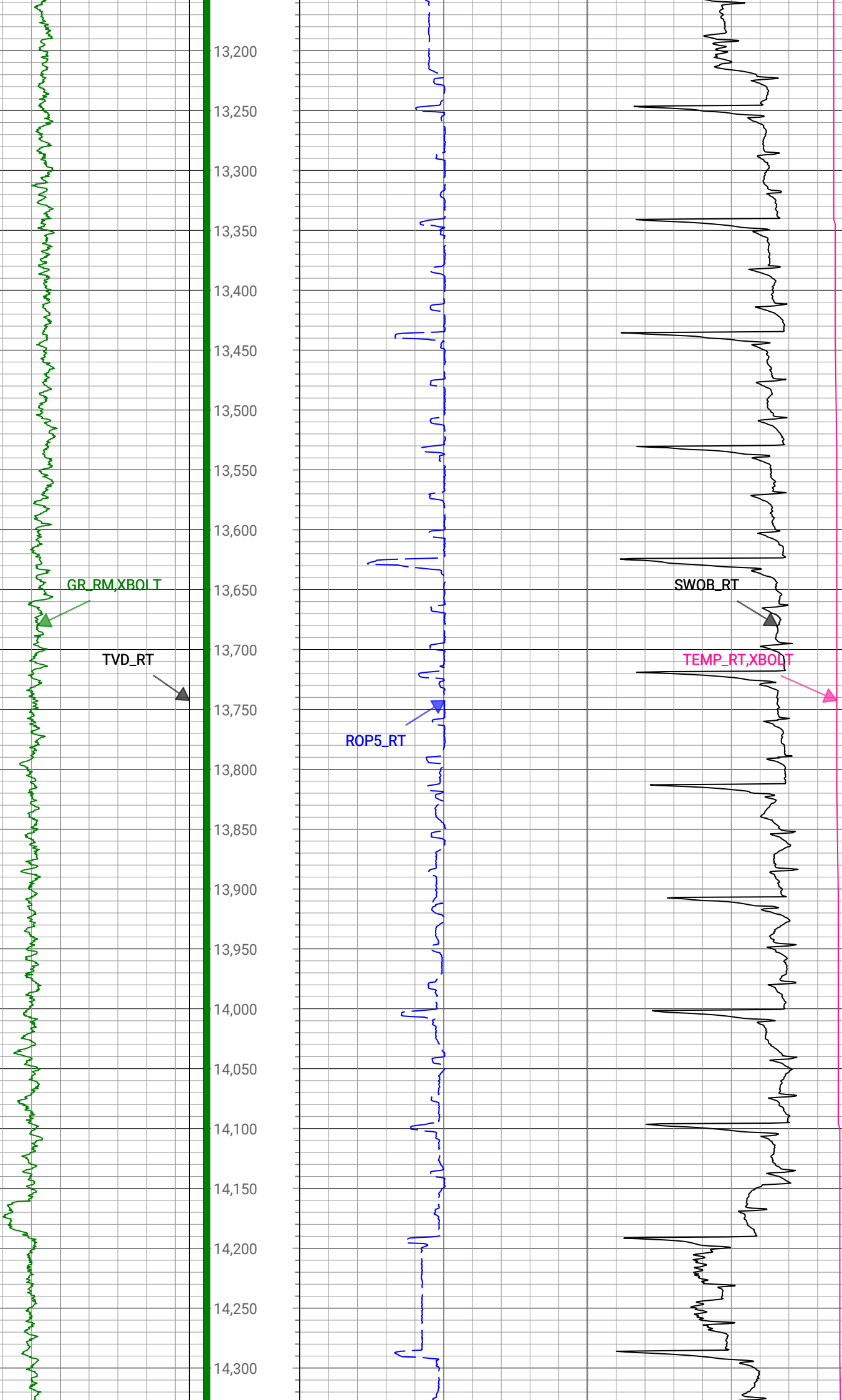


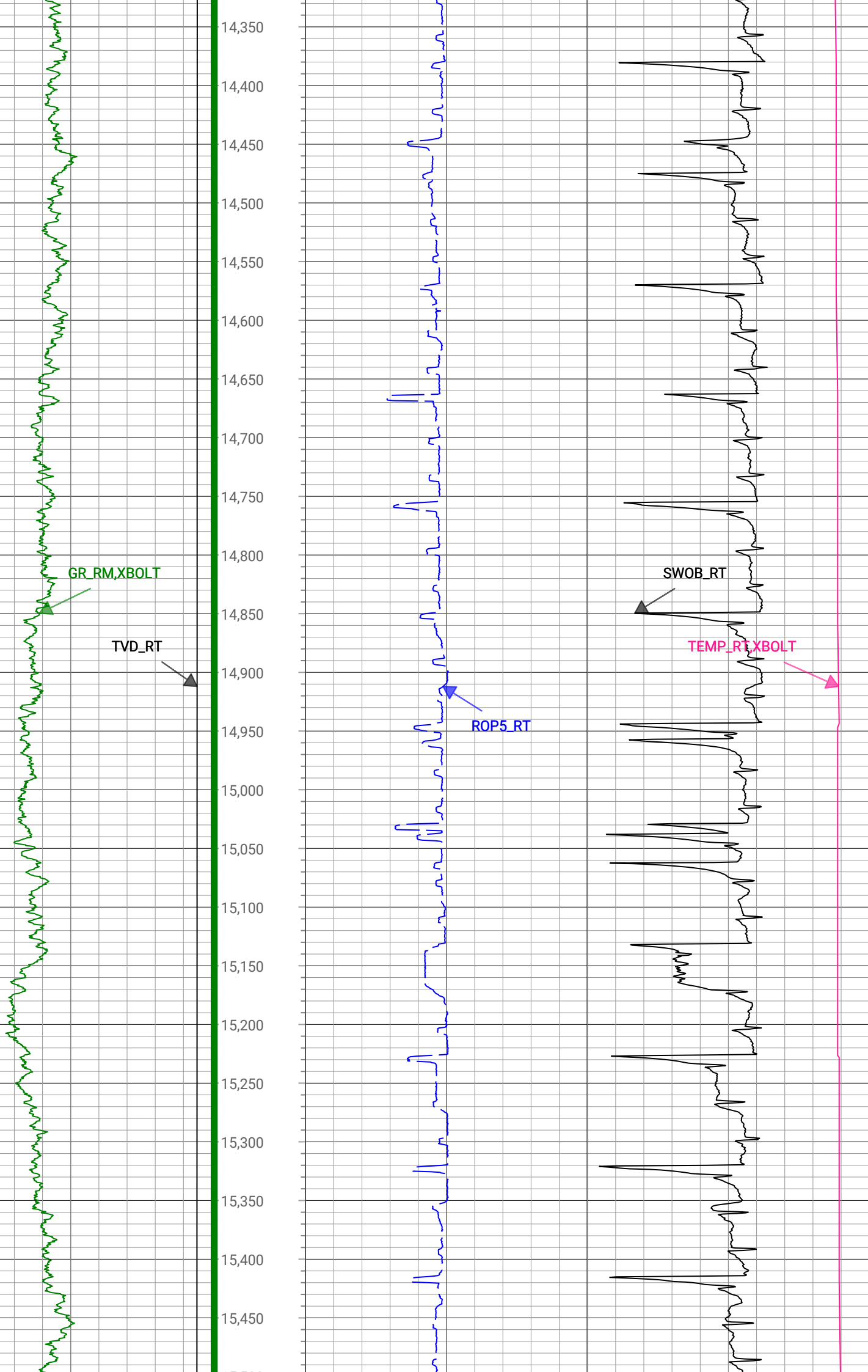


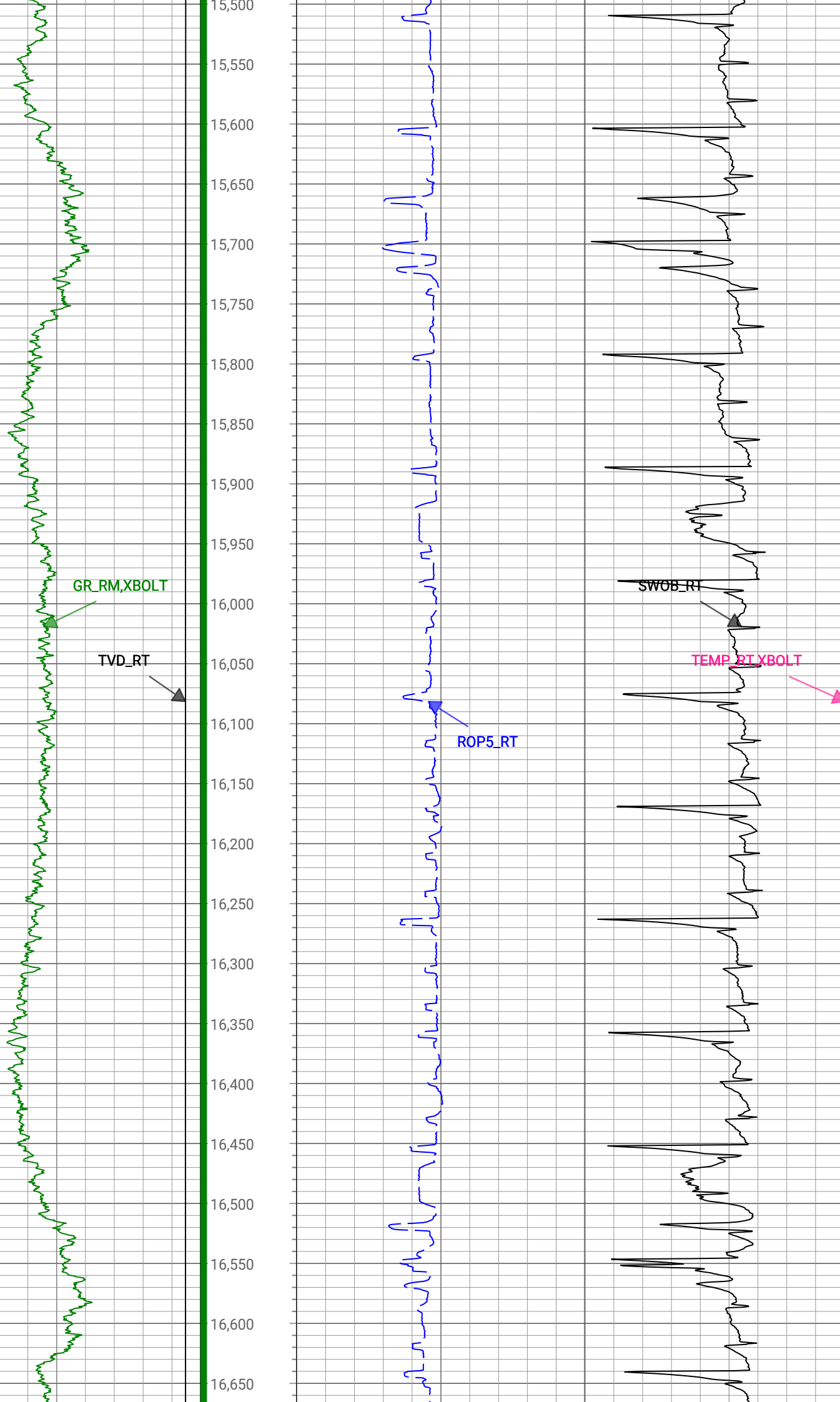


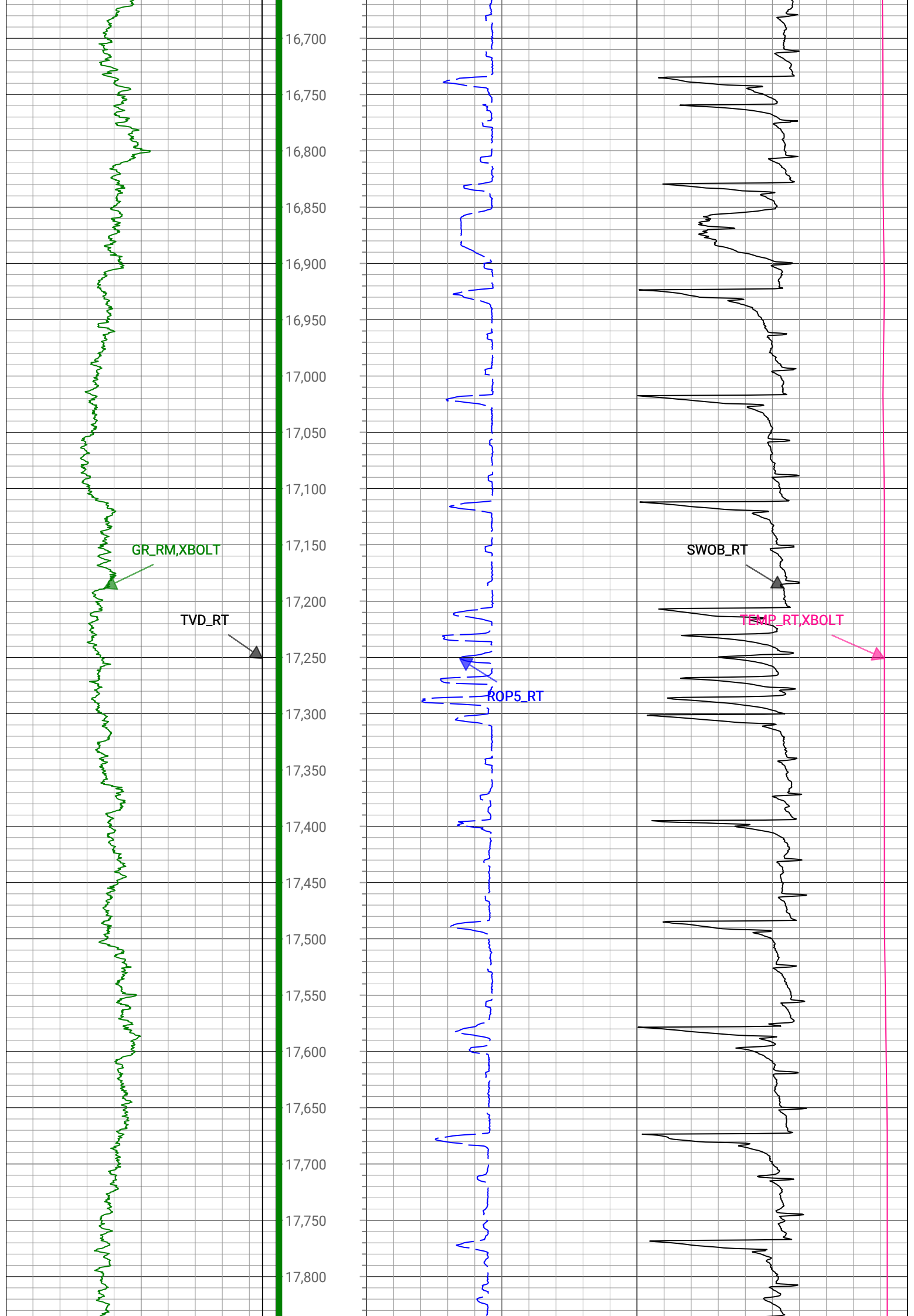












1874	16.56	239.53	1842.45	-156.99	-164.53	-188.94	4.42	250.54	228.95	Manual
1969	22.47	251.33	1931.98	-183.2	-177.22	-217.84	7.45	280.83	230.87	Manual
2063	29.55	253.49	2016.41	-219.7	-189.58	-257.14	7.6	319.47	233.6	Manual
2158	28.22	246.69	2099.61	-259.39	-205.13	-300.24	3.73	363.62	235.66	Manual
2252	26.41	242.37	2183.14	-294.46	-223.62	-339.18	2.85	406.26	236.6	Manual
2347	26.17	236.17	2268.33	-326.24	-245.08	-375.3	2.9	448.24	236.85	Manual
2442	26.39	232.07	2353.52	-355.42	-269.73	-409.36	1.92	490.24	236.62	Manual
2536	26.55	227.95	2437.67	-382.26	-296.64	-441.44	1.96	531.85	236.1	Manual
2631	24.66	228.25	2523.34	-407.5	-324.06	-472	1.99	572.54	235.53	Manual
2725	24.18	226.38	2608.93	-430.98	-350.4	-500.56	0.97	611.02	235.01	Manual
2820	23.47	227.22	2695.83	-453.88	-376.67	-528.53	0.83	649.02	234.52	Manual
2915	22.57	227.35	2783.27	-476.31	-401.87	-555.83	0.95	685.89	234.13	Manual
3009	21.92	226.67	2870.27	-497.66	-426.14	-581.86	0.74	721.22	233.78	Manual
3104	22.33	228.39	2958.27	-519.38	-450.29	-608.25	0.81	756.79	233.49	Manual
3199	22.59	228.74	3046.07	-541.93	-474.31	-635.46	0.31	792.96	233.26	Manual
3294	21.89	228.77	3134	-564.37	-498.01	-662.5	0.74	828.81	233.07	Manual
3389	22.58	227.91	3221.94	-586.59	-521.91	-689.35	0.8	864.64	232.87	Manual
3484	21.21	227.13	3310.08	-608.1	-545.83	-715.48	1.47	899.91	232.66	Manual
3578	22.49	227.72	3397.33	-629.29	-569.49	-741.25	1.38	934.76	232.47	Manual
3673	21.75	227.89	3485.33	-651.14	-593.52	-767.75	0.78	970.41	232.29	Manual
3767	21.09	226.26	3572.84	-671.77	-616.89	-792.89	0.95	1004.6	232.12	Manual
3862	21.94	224.01	3661.22	-691.73	-641.47	-817.57	1.25	1039.19	231.88	Manual
3957	21.69	226.08	3749.42	-711.92	-666.41	-842.55	0.85	1074.24	231.66	Manual
4051	22.03	227.3	3836.66	-732.76	-690.42	-868.01	0.6	1109.11	231.5	Manual
4146	22.61	227.52	3924.54	-754.6	-714.84	-894.58	0.62	1145.1	231.37	Manual
4240	22.05	227.94	4011.5	-776.38	-738.86	-921	0.62	1180.75	231.26	Manual
4335	21.15	222.86	4099.83	-796.57	-763.37	-945.9	2.18	1215.51	231.1	Manual
4430	21.76	223.45	4188.25	-815.5	-788.72	-969.67	0.68	1249.93	230.88	Manual
4619	23.55	227.87	4362.67	-857.84	-839.49	-1021.77	1.31	1322.41	230.59	Manual
4714	23.83	229.12	4449.67	-881.53	-864.78	-1050.36	0.61	1360.55	230.53	Manual
4904	22.72	231.44	4624.2	-929.88	-912.77	-1108.07	0.76	1435.61	230.52	Manual
5093	24.36	231.87	4797.47	-979.91	-959.59	-1167.28	0.87	1511.08	230.58	Manual
5188	24.44	231.28	4883.98	-1005.87	-983.98	-1198.02	0.27	1550.32	230.6	Manual
5283	24.47	230.28	4970.46	-1031.48	-1008.85	-1228.49	0.44	1589.64	230.61	Manual
5472	22.58	227.61	5143.75	-1078.78	-1058.33	-1285.41	1.15	1665.03	230.53	Manual
5661	23.37	229.78	5317.76	-1124.76	-1107	-1340.83	0.61	1738.76	230.46	Manual
5851	24.21	229.75	5491.61	-1173.63	-1156.51	-1399.34	0.44	1815.39	230.43	Manual
5945	23.74	229.65	5577.5	-1197.95	-1181.21	-1428.47	0.5	1853.59	230.41	Manual
6040	24.15	229.63	5664.33	-1222.47	-1206.18	-1457.85	0.43	1892.14	230.4	Manual
6230	23.19	227.1	5838.35	-1269.67	-1256.82	-1514.87	0.74	1968.36	230.32	Manual
6419	23.87	230.32	6011.64	-1316.71	-1306.57	-1571.56	0.77	2043.76	230.26	Manual
6609	23.2	231.05	6185.83	-1366.02	-1354.65	-1630.25	0.38	2119.62	230.28	Manual
6703	21.9	218.12	6272.7	-1386.37	-1380.09	-1655.49	5.44	2155.3	230.18	Manual
6798	14.71	198.63	6362.91	-1396.48	-1405.52	-1670.31	9.84	2182.99	229.92	Manual
6892	12.65	164.16	6454.39	-1393.73	-1426.77	-1671.32	8.8	2197.49	229.51	Manual
6987	16.7	138.69	6546.37	-1378.47	-1447.06	-1659.45	7.92	2201.76	228.91	Manual
7082	21.78	124.76	6636.08	-1351.74	-1467.38	-1635.93	7.17	2197.61	228.11	Manual
7176	28.2	121.11	6721.24	-1315.11	-1488.82	-1602.55	7.02	2187.41	227.11	Manual
7271	35.9	116.87	6801.71	-1267.39	-1513.05	-1558.42	8.44	2172.09	225.85	Manual
7365	43.76	112.54	6873.85	-1209.14	-1538.01	-1503.71	8.86	2150.96	224.35	Manual

7460	50.47	107.55	6938.49	-1140.62	-1561.69	-1438.34	8.04	2123.13	222.65	Manual
7555	53.14	101.78	6997.26	-1066.25	-1580.5	-1366.16	5.54	2089.11	220.84	Manual
7649	61.39	99.78	7048.05	-987.26	-1595.22	-1288.54	8.96	2050.62	218.93	Manual
7744	67.5	101.03	7089.01	-901.6	-1610.71	-1204.29	6.54	2011.15	216.78	Manual
7839	77.24	99.07	7117.75	-811.17	-1626.45	-1115.25	10.44	1972.09	214.44	Manual
7933	86.97	93.32	7130.66	-718.44	-1636.43	-1022.83	11.99	1929.79	212.01	Manual
8028	88.73	92.8	7134.22	-624.24	-1641.49	-928.04	1.93	1885.67	209.48	Manual
8122	86.55	93.25	7138.09	-531.05	-1646.45	-834.25	2.37	1845.74	206.87	Manual
8217	87.49	91.86	7143.03	-437.01	-1650.68	-739.48	1.76	1808.75	204.13	Manual
8312	86.67	90.27	7147.87	-343.33	-1652.44	-644.62	1.88	1773.73	201.31	Manual
8406	86.56	89.56	7153.42	-250.99	-1652.3	-550.79	0.76	1741.69	198.44	Manual
8501	85.95	89.92	7159.63	-157.75	-1651.87	-455.99	0.75	1713.65	195.43	Manual
8596	85.91	90.12	7166.37	-64.47	-1651.91	-361.23	0.21	1690.94	192.33	Manual
8691	86.58	91.65	7172.59	29.09	-1653.37	-266.45	1.76	1674.7	189.15	Manual
8785	85.82	92.63	7178.82	121.96	-1656.87	-172.72	1.32	1665.85	185.95	Manual
8880	87.12	92.19	7184.67	215.92	-1660.86	-77.99	1.44	1662.69	182.69	Manual
8975	86.51	93.88	7189.95	310.04	-1665.88	16.73	1.89	1665.96	179.42	Manual
9070	86.59	91.94	7195.66	404.1	-1670.69	111.43	2.04	1674.41	176.18	Manual
9164	88.57	91.83	7199.63	497.04	-1673.78	205.29	2.11	1686.33	173.01	Manual
9259	88.34	92.35	7202.19	591.07	-1677.25	300.19	0.6	1703.9	169.85	Manual
9354	88.73	90.13	7204.62	684.88	-1679.3	395.13	2.37	1725.16	166.76	Manual
9448	90.48	89.05	7205.27	777.28	-1678.63	489.12	2.19	1748.44	163.75	Manual
9543	90.16	89.71	7204.74	870.61	-1677.6	584.11	0.77	1776.38	160.8	Manual
9732	89.91	89.16	7204.63	1056.31	-1675.74	773.1	0.32	1845.48	155.23	Manual
9920	90.85	89.15	7203.38	1240.86	-1672.96	961.08	0.5	1929.37	150.12	Manual
10109	90.92	89.66	7200.46	1426.52	-1671	1150.04	0.27	2028.51	145.46	Manual
10297	90.14	89.78	7198.72	1611.4	-1670.08	1338.03	0.42	2139.98	141.3	Manual
10391	90.31	89.31	7198.35	1703.8	-1669.34	1432.03	0.53	2199.41	139.38	Manual
10485	89.38	89.35	7198.61	1796.12	-1668.24	1526.02	0.99	2260.92	137.55	Manual
10674	89.43	90.25	7200.57	1982.04	-1667.58	1715.01	0.48	2392.08	134.2	Manual
10768	89.34	89.69	7201.58	2074.55	-1667.53	1809	0.6	2460.31	132.67	Manual
10957	90.14	89.81	7202.44	2260.44	-1666.7	1998	0.43	2601.9	129.83	Manual
11052	89.92	89.21	7202.39	2353.81	-1665.89	2092.99	0.67	2675.03	128.52	Manual
11146	89.56	90.49	7202.81	2446.29	-1665.65	2186.99	1.41	2749.05	127.29	Manual
11335	90.32	89.21	7203.01	2632.24	-1665.15	2375.98	0.79	2901.38	125.02	Manual
11524	90.18	89.61	7202.19	2817.93	-1663.21	2564.97	0.22	3057.01	122.96	Manual
11712	89.94	89.56	7201.99	3002.74	-1661.84	2752.96	0.13	3215.67	121.12	Manual
11901	90.23	89.4	7201.71	3188.47	-1660.13	2941.96	0.18	3378.04	119.44	Manual
11994	90.55	90.01	7201.08	3279.93	-1659.65	3034.95	0.74	3459.1	118.67	Manual
12089	90.5	89.34	7200.2	3373.34	-1659.11	3129.95	0.71	3542.49	117.93	Manual
12183	90.97	88.85	7199	3465.59	-1657.63	3223.93	0.72	3625.11	117.21	Manual
12277	90.76	90.06	7197.58	3557.94	-1656.73	3317.91	1.31	3708.54	116.53	Manual
12371	91.51	89.94	7195.72	3650.45	-1656.73	3411.89	0.81	3792.86	115.9	Manual
12464	90.79	89.64	7193.85	3741.92	-1656.39	3504.87	0.84	3876.56	115.3	Manual
12558	90.07	89.98	7193.15	3834.39	-1656.08	3598.87	0.85	3961.62	114.71	Manual
12652	89.76	90.29	7193.29	3926.95	-1656.3	3692.87	0.47	4047.29	114.16	Manual
12841	90.22	89.84	7193.32	4113.03	-1656.52	3881.86	0.34	4220.54	113.11	Manual
12935	89.99	89.88	7193.15	4205.52	-1656.29	3975.86	0.25	4307.06	112.62	Manual
13029	89.27	90.78	7193.75	4298.14	-1656.83	4069.86	1.23	4394.18	112.15	Manual
13123	90.07	89.08	7194.29	4390.63	-1656.63	4162.85	2.1	4481.2	111.7	Manual

13123	90.07	88.96	7194.29	4390.63	-1630.63	4163.63	2.1	4481.3	111.7	Manual
13218	89.99	88.84	7194.24	4483.81	-1654.82	4258.84	0.17	4569.04	111.23	Manual
13312	89.52	88.99	7194.65	4576	-1653.04	4352.82	0.52	4656.13	110.79	Manual
13407	90.14	88.29	7194.93	4669.09	-1650.79	4447.79	0.98	4744.25	110.36	Manual
13501	90.53	88.14	7194.38	4761.06	-1647.86	4541.74	0.44	4831.45	109.94	Manual
13595	89.65	88.58	7194.23	4853.07	-1645.17	4635.7	1.05	4918.98	109.54	Manual
13784	89.97	88.75	7194.86	5038.29	-1640.77	4824.65	0.19	5096.01	108.78	Manual
13878	90.13	88.96	7194.78	5130.47	-1638.89	4918.63	0.28	5184.48	108.43	Manual
13973	89.78	88.97	7194.85	5223.66	-1637.17	5013.61	0.37	5274.15	108.08	Manual
14067	90.28	88.71	7194.8	5315.84	-1635.27	5107.6	0.6	5362.99	107.75	Manual
14161	90.06	88.25	7194.52	5407.89	-1632.78	5201.56	0.54	5451.81	107.43	Manual
14256	90.36	88.32	7194.17	5500.86	-1629.93	5296.52	0.32	5541.64	107.11	Manual
14351	90.07	89.19	7193.82	5593.99	-1627.87	5391.49	0.97	5631.89	106.8	Manual
14445	90.47	89.3	7193.37	5686.29	-1626.63	5485.48	0.44	5721.58	106.52	Manual
14539	90.6	89.34	7192.5	5778.61	-1625.51	5579.47	0.14	5811.44	106.24	Manual
14728	89.99	89.27	7191.52	5964.23	-1623.22	5768.46	0.32	5992.49	105.72	Manual
14916	90.44	89.45	7190.82	6148.91	-1621.12	5956.44	0.26	6173.11	105.23	Manual
15010	90.32	89.74	7190.2	6241.31	-1620.46	6050.44	0.33	6263.68	104.99	Manual
15104	89.92	90.26	7190	6333.84	-1620.46	6144.44	0.7	6354.53	104.77	Manual
15292	90.8	90.15	7188.82	6519.01	-1621.13	6332.43	0.47	6536.65	104.36	Manual
15386	90.48	90.06	7187.77	6611.57	-1621.3	6426.42	0.35	6627.79	104.16	Manual
15481	90.57	90.15	7186.9	6705.1	-1621.48	6521.42	0.13	6719.98	103.96	Manual
15669	90.59	90	7184.99	6890.2	-1621.72	6709.41	0.08	6902.62	103.59	Manual
15763	90.62	89.77	7184	6982.69	-1621.53	6803.41	0.25	6993.98	103.41	Manual
15857	90.47	90.05	7183.11	7075.19	-1621.39	6897.4	0.34	7085.41	103.23	Manual
16045	89.94	90.05	7182.43	7260.27	-1621.55	7085.4	0.28	7268.58	102.89	Manual
16233	90.51	89.71	7181.7	7445.26	-1621.16	7273.4	0.35	7451.87	102.57	Manual
16327	90.01	90	7181.27	7537.74	-1620.92	7367.39	0.61	7543.6	102.41	Manual
16515	89.63	90.51	7181.86	7722.94	-1621.76	7555.39	0.34	7727.48	102.11	Manual
16703	89.51	90.62	7183.27	7908.31	-1623.61	7743.38	0.09	7911.76	101.84	Manual
16797	89.34	89.9	7184.21	8000.91	-1624.04	7837.37	0.79	8003.87	101.71	Manual
16892	89.58	89.31	7185.11	8094.3	-1623.38	7932.36	0.67	8096.77	101.57	Manual
16986	89.46	89.25	7185.9	8186.61	-1622.2	8026.35	0.14	8188.64	101.43	Manual
17174	89.3	89.69	7187.93	8371.34	-1620.46	8214.33	0.25	8372.64	101.16	Manual
17269	89.53	89.22	7188.9	8464.69	-1619.56	8309.32	0.55	8465.68	101.03	Manual
17457	89.61	89.15	7190.31	8649.25	-1616.88	8497.3	0.06	8649.76	100.77	Manual
17551	89.41	89.28	7191.12	8741.54	-1615.6	8591.29	0.25	8741.87	100.65	Manual
17645	89.51	89	7192	8833.81	-1614.18	8685.27	0.32	8834	100.53	Manual
17740	89.64	89.09	7192.71	8927.02	-1612.6	8780.26	0.17	8927.11	100.41	Manual
17834	89.49	88.85	7193.42	9019.24	-1610.91	8874.24	0.3	9019.26	100.29	Manual
17895	89.71	88.6	7193.85	9079.03	-1609.55	8935.22	0.55	9079.03	100.21	Manual
17923	89.71	88.6	7193.99	9106.46	-1608.87	8963.21	0	9106.46	100.18	Manual

Company:	PDC Energy Inc
Well:	BOST FARM 39N-8B-L
Field Name:	Wattenberg
Country Name:	United States
State Name:	Colorado
County Name:	Weld

