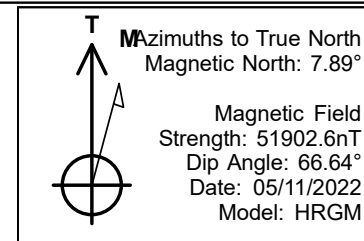


PDC Energy Inc. DJ Basin

Bost Farm 9N-8C-L
 Bost Farms 5-7 Pad SEC.7-T5N-R66W
 North American Datum 1983 , US State Plane 1983, Colorado Northern Zone
 Ground Elevation: 4874.0
 +N/-S +E/-W Northing Easting Latitude Longitude Slot
 0.0 0.0 1394603.47 3187136.52 40.414642 -104.827929
 Patterson 272 - RKB 28WELL @ 4902ft (Patterson 272 - RKB 28')



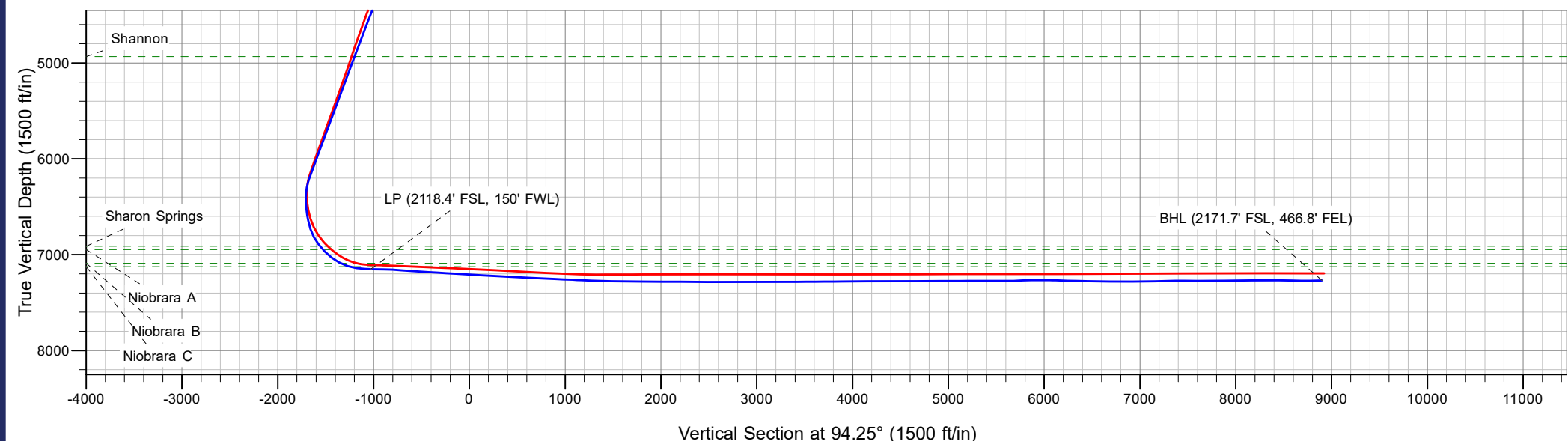
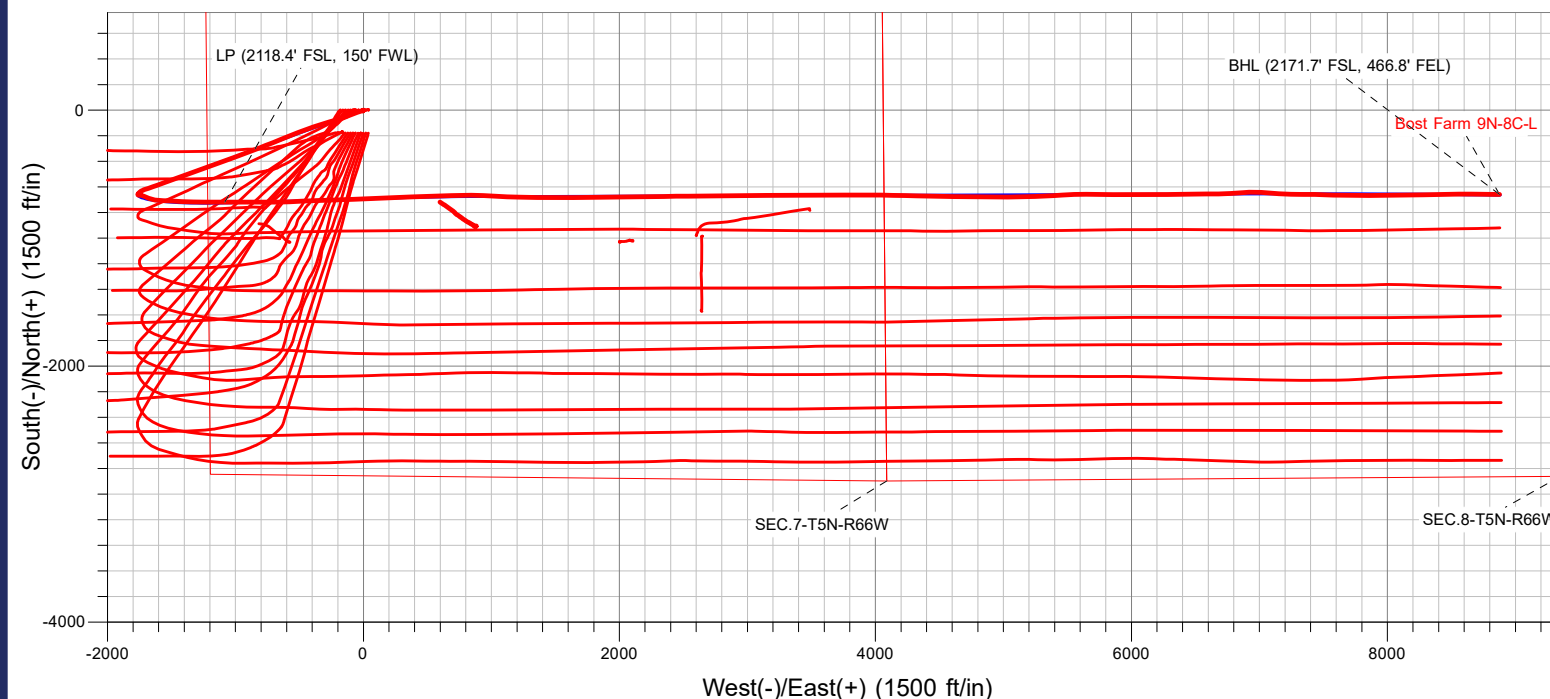
Bost Farms 5-7 Pad SEC.7-T5N-R66W
 Bost Farm 9N-8C-L
 9N-8C-L_Final Surveys
 13:39, May 16 2022



ANNOTATIONS

MD	TVD	Annotation
7899.6	7150.2	LP (2118.4' FSL, 150' FWL)
17865.0	7268.8	BHL (2171.7' FSL, 466.8' FEL)

FINAL SURVEY
Projected Bottom Hole Location
17865' MD / 7268.8' TVD
91.67° INC / 91.11° AZM
2171.7' FSL / 466.8' FEL





PDC Energy Inc. DJ Basin

SEC.7-T5N-R66W

Bost Farms 5-7 Pad SEC.7-T5N-R66W

Bost Farm 9N-8C-L

Bost Farm 9N-8C-L Wellbore #1

Design: 9N-8C-L_Final Surveys

Standard Survey Report

16 May, 2022



Company:	PDC Energy Inc. DJ Basin	Local Co-ordinate Reference:	Well Bost Farm 9N-8C-L
Project:	SEC.7-T5N-R66W	TVD Reference:	WELL @ 4902ft (Patterson 272 - RKB 28')
Site:	Bost Farms 5-7 Pad SEC.7-T5N-R66W	MD Reference:	WELL @ 4902ft (Patterson 272 - RKB 28')
Well:	Bost Farm 9N-8C-L	North Reference:	True
Wellbore:	Bost Farm 9N-8C-L Wellbore #1	Survey Calculation Method:	Minimum Curvature
Design:	9N-8C-L_Final Surveys	Database:	US_EDM

Project	SEC.7-T5N-R66W, Weld County, Co		
Map System:	US State Plane 1983	System Datum:	Mean Sea Level
Geo Datum:	North American Datum 1983		
Map Zone:	Colorado Northern Zone		Using geodetic scale factor

Site						Bost Farms 5-7 Pad SEC.7-T5N-R66W											
Site Position:						Northing:			1,394,603.55 usft			Latitude:			40.414641		
From:			Lat/Long			Easting:			3,187,178.01 usft			Longitude:			-104.827780		
Position Uncertainty:			0.0 ft			Slot Radius:			13-3/16 "			Grid Convergence:			0.43 °		

Well	Bost Farm 9N-8C-L					
Well Position	+N/-S	0.0 ft	Northing:	1,394,603.47 usfl	Latitude:	40.414642
	+E/-W	0.0 ft	Easting:	3,187,136.52 usfl	Longitude:	-104.827929
Position Uncertainty		0.0 ft	Wellhead Elevation:	ft	Ground Level:	4,874.0 ft

Wellbore	Bost Farm 9N-8C-L Wellbore #1				
Magnetics	Model Name	Sample Date	Declination (°)	Dip Angle (°)	Field Strength (nT)
	HRGM	05/11/2022	7.89	66.64	51,902.58682117

Design	9N-8C-L_Final Surveys				
Audit Notes:					
Version:	1.0	Phase:	ACTUAL	Tie On Depth:	0.0
Vertical Section:	Depth From (TVD) (ft)	+N/-S (ft)	+E/-W (ft)	Direction (°)	
	0.0	0.0	0.0	94.25	

Survey Program	Date	05/16/2022			
From (ft)	To (ft)	Survey (Wellbore)	Tool Name	Description	
161.5	17,865.0	Surface Surveys (Bost Farm 9N-8C-L Wel	MWD	MWD - Standard	

Survey									
Measured Depth (ft)	Inclination (°)	Azimuth (°)	Vertical Depth (ft)	+N/-S (ft)	+E/-W (ft)	Vertical Section (ft)	Dogleg Rate (°/100usft)	Build Rate (°/100usft)	Turn Rate (°/100usft)
0.0	0.00	0.00	0.0	0.0	0.0	0.0	0.00	0.00	0.00
161.5	0.70	179.70	161.5	-1.0	0.0	0.1	0.43	0.43	0.00
252.5	0.70	199.70	252.5	-2.1	-0.2	0.0	0.27	0.00	21.98
344.5	0.90	207.10	344.5	-3.2	-0.7	-0.5	0.24	0.22	8.04
433.5	0.50	211.30	433.5	-4.2	-1.2	-0.9	0.45	-0.45	4.72
522.5	0.40	205.00	522.5	-4.8	-1.6	-1.2	0.13	-0.11	-7.08
612.5	0.60	233.80	612.5	-5.4	-2.1	-1.7	0.35	0.22	32.00
702.5	1.20	251.90	702.5	-5.9	-3.3	-2.9	0.73	0.67	20.11
787.6	0.75	358.78	787.5	-5.7	-4.2	-3.8	1.87	-0.53	125.66
Fox Hills Aq Base									
791.5	0.80	2.60	791.4	-5.6	-4.2	-3.8	1.87	1.33	96.78

Company:	PDC Energy Inc. DJ Basin	Local Co-ordinate Reference:	Well Bost Farm 9N-8C-L
Project:	SEC.7-T5N-R66W	TVD Reference:	WELL @ 4902ft (Patterson 272 - RKB 28')
Site:	Bost Farms 5-7 Pad SEC.7-T5N-R66W	MD Reference:	WELL @ 4902ft (Patterson 272 - RKB 28')
Well:	Bost Farm 9N-8C-L	North Reference:	True
Wellbore:	Bost Farm 9N-8C-L Wellbore #1	Survey Calculation Method:	Minimum Curvature
Design:	9N-8C-L_Final Surveys	Database:	US_EDM

Survey									
Measured Depth (ft)	Inclination (°)	Azimuth (°)	Vertical Depth (ft)	+N/-S (ft)	+E/-W (ft)	Vertical Section (ft)	Dogleg Rate (°/100usft)	Build Rate (°/100usft)	Turn Rate (°/100usft)
880.5	0.30	30.10	880.4	-4.8	-4.1	-3.7	0.62	-0.56	30.90
970.5	0.50	7.00	970.4	-4.2	-3.9	-3.6	0.28	0.22	-25.67
1,059.5	1.10	272.80	1,059.4	-3.8	-4.7	-4.4	1.39	0.67	-105.84
1,149.5	2.50	249.40	1,149.4	-4.4	-7.4	-7.0	1.73	1.56	-26.00
1,238.5	4.00	245.60	1,238.2	-6.4	-12.0	-11.5	1.70	1.69	-4.27
1,328.5	6.40	253.80	1,327.9	-9.1	-19.7	-19.0	2.78	2.67	9.11
1,417.5	7.70	255.80	1,416.2	-11.9	-30.3	-29.3	1.49	1.46	2.25
1,506.5	9.00	250.00	1,504.2	-15.8	-42.6	-41.3	1.74	1.46	-6.52
1,608.5	10.10	253.10	1,604.8	-21.1	-58.6	-56.9	1.19	1.08	3.04
1,780.0	12.07	249.04	1,773.1	-31.9	-89.8	-87.2	1.23	1.15	-2.37
1,874.0	13.80	243.53	1,864.7	-40.4	-109.0	-105.7	2.26	1.84	-5.86
1,969.0	16.33	245.80	1,956.5	-50.9	-131.3	-127.2	2.73	2.66	2.39
2,064.0	16.38	251.84	2,047.6	-60.6	-156.2	-151.3	1.79	0.05	6.36
2,158.0	16.59	253.62	2,137.8	-68.5	-181.7	-176.1	0.58	0.22	1.89
2,253.0	18.45	254.71	2,228.4	-76.3	-209.2	-203.0	1.99	1.96	1.15
2,348.0	20.98	252.90	2,317.8	-85.2	-240.0	-233.0	2.74	2.66	-1.91
2,442.0	22.26	254.05	2,405.2	-95.1	-273.2	-265.4	1.43	1.36	1.22
2,537.0	21.56	254.05	2,493.3	-104.8	-307.3	-298.7	0.74	-0.74	0.00
2,631.0	21.97	253.40	2,580.6	-114.6	-340.7	-331.3	0.51	0.44	-0.69
2,726.0	21.56	250.21	2,668.8	-125.6	-374.2	-363.8	1.32	-0.43	-3.36
2,820.0	22.51	250.65	2,756.0	-137.4	-407.4	-396.1	1.03	1.01	0.47
2,915.0	21.54	252.04	2,844.0	-148.8	-441.2	-428.9	1.16	-1.02	1.46
3,010.0	21.41	250.36	2,932.4	-160.0	-474.1	-460.9	0.66	-0.14	-1.77
3,105.0	21.44	246.67	3,020.9	-172.7	-506.3	-492.2	1.42	0.03	-3.88
3,199.0	21.98	248.13	3,108.2	-186.1	-538.4	-523.2	0.81	0.57	1.55
3,295.0	22.59	247.49	3,197.0	-199.8	-572.2	-555.8	0.68	0.64	-0.67
3,389.0	21.68	247.38	3,284.1	-213.4	-604.9	-587.4	0.97	-0.97	-0.12
3,484.0	21.67	248.15	3,372.4	-226.7	-637.3	-618.8	0.30	-0.01	0.81
3,579.0	21.70	248.75	3,460.7	-239.6	-670.0	-650.4	0.24	0.03	0.63
3,673.0	21.11	248.46	3,548.2	-252.1	-701.9	-681.3	0.64	-0.63	-0.31
3,768.0	22.07	248.52	3,636.5	-264.9	-734.5	-712.8	1.01	1.01	0.06
3,863.0	22.21	248.71	3,724.5	-278.0	-767.8	-745.1	0.17	0.15	0.20
3,881.3	22.14	248.58	3,741.5	-280.5	-774.2	-751.3	0.45	-0.36	-0.70
Parkman									
3,957.0	21.87	248.04	3,811.7	-291.0	-800.6	-776.8	0.45	-0.36	-0.71
4,052.0	21.83	249.18	3,899.8	-303.9	-833.5	-808.7	0.45	-0.04	1.20
4,146.0	21.61	249.47	3,987.2	-316.1	-866.0	-840.2	0.26	-0.23	0.31
4,241.0	22.40	248.86	4,075.2	-328.8	-899.3	-872.5	0.87	0.83	-0.64
4,336.0	22.38	249.47	4,163.1	-341.7	-933.1	-905.3	0.25	-0.02	0.64
4,430.0	22.63	249.91	4,249.9	-354.2	-966.9	-938.0	0.32	0.27	0.47
4,471.8	22.78	249.84	4,288.5	-359.7	-982.0	-952.7	0.35	0.35	-0.16
Sussex									
4,525.0	22.96	249.76	4,337.5	-366.8	-1,001.4	-971.5	0.35	0.35	-0.16

Company:	PDC Energy Inc. DJ Basin	Local Co-ordinate Reference:	Well Bost Farm 9N-8C-L
Project:	SEC.7-T5N-R66W	TVD Reference:	WELL @ 4902ft (Patterson 272 - RKB 28')
Site:	Bost Farms 5-7 Pad SEC.7-T5N-R66W	MD Reference:	WELL @ 4902ft (Patterson 272 - RKB 28')
Well:	Bost Farm 9N-8C-L	North Reference:	True
Wellbore:	Bost Farm 9N-8C-L Wellbore #1	Survey Calculation Method:	Minimum Curvature
Design:	9N-8C-L_Final Surveys	Database:	US_EDM

Survey

Measured Depth (ft)	Inclination (°)	Azimuth (°)	Vertical Depth (ft)	+N/-S (ft)	+E/-W (ft)	Vertical Section (ft)	Dogleg Rate (°/100usft)	Build Rate (°/100usft)	Turn Rate (°/100usft)
4,620.0	22.46	250.35	4,425.1	-379.4	-1,035.9	-1,005.0	0.58	-0.53	0.62
4,715.0	22.56	251.78	4,512.9	-391.2	-1,070.3	-1,038.4	0.59	0.11	1.51
4,809.0	22.58	251.10	4,599.7	-402.6	-1,104.5	-1,071.6	0.28	0.02	-0.72
4,904.0	22.67	249.73	4,687.4	-414.9	-1,138.9	-1,105.1	0.56	0.09	-1.44
4,999.0	22.57	249.95	4,775.1	-427.5	-1,173.2	-1,138.3	0.14	-0.11	0.23
5,094.0	22.50	249.14	4,862.8	-440.2	-1,207.3	-1,171.4	0.33	-0.07	-0.85
5,169.5	22.76	250.32	4,932.5	-450.3	-1,234.6	-1,197.8	0.70	0.35	1.57
Shannon									
5,188.0	22.83	250.61	4,949.6	-452.7	-1,241.4	-1,204.4	0.70	0.36	1.55
5,283.0	22.52	248.87	5,037.2	-465.3	-1,275.7	-1,237.7	0.78	-0.33	-1.83
5,378.0	22.24	249.50	5,125.1	-478.2	-1,309.5	-1,270.5	0.39	-0.29	0.66
5,472.0	22.31	249.65	5,212.0	-490.6	-1,342.9	-1,302.9	0.10	0.07	0.16
5,567.0	22.97	250.66	5,299.7	-503.0	-1,377.3	-1,336.3	0.81	0.69	1.06
5,662.0	21.18	250.85	5,387.8	-514.8	-1,411.0	-1,369.0	1.89	-1.88	0.20
5,756.0	21.78	250.44	5,475.2	-526.2	-1,443.5	-1,400.5	0.66	0.64	-0.44
5,851.0	21.98	250.34	5,563.4	-538.1	-1,476.8	-1,432.9	0.21	0.21	-0.11
5,946.0	22.13	250.47	5,651.4	-550.1	-1,510.4	-1,465.5	0.17	0.16	0.14
6,041.0	22.69	249.93	5,739.3	-562.3	-1,544.5	-1,498.6	0.63	0.59	-0.57
6,135.0	22.16	250.31	5,826.2	-574.5	-1,578.2	-1,531.3	0.58	-0.56	0.40
6,230.0	22.12	250.43	5,914.1	-586.6	-1,612.0	-1,564.1	0.06	-0.04	0.13
6,325.0	22.45	251.25	6,002.1	-598.4	-1,646.0	-1,597.1	0.48	0.35	0.86
6,420.0	21.95	250.66	6,090.0	-610.1	-1,679.9	-1,630.1	0.58	-0.53	-0.62
6,514.0	22.28	250.36	6,177.1	-621.9	-1,713.3	-1,662.5	0.37	0.35	-0.32
6,609.0	17.22	234.15	6,266.5	-636.2	-1,741.7	-1,689.8	7.80	-5.33	-17.06
6,704.0	10.38	214.31	6,358.8	-651.5	-1,757.9	-1,704.8	8.66	-7.20	-20.88
6,798.0	4.57	166.14	6,452.0	-662.2	-1,761.8	-1,707.9	8.59	-6.18	-51.24
6,893.0	8.36	82.29	6,546.6	-664.9	-1,754.0	-1,700.0	9.56	3.99	-88.26
6,988.0	12.91	95.98	6,639.9	-665.1	-1,736.6	-1,682.6	5.45	4.79	14.41
7,082.0	18.30	120.60	6,730.5	-673.7	-1,713.4	-1,658.8	8.97	5.73	26.19
7,177.0	29.22	109.97	6,817.4	-689.3	-1,678.7	-1,623.0	12.30	11.49	-11.19
7,271.0	38.35	99.33	6,895.5	-701.9	-1,628.2	-1,571.7	11.54	9.71	-11.32
7,291.6	39.43	97.43	6,911.5	-703.8	-1,615.4	-1,558.9	7.81	5.23	-9.23
Sharon Springs									
7,339.1	42.02	93.37	6,947.5	-706.7	-1,584.6	-1,527.9	7.81	5.46	-8.56
Niobrara A									
7,366.0	43.55	91.24	6,967.3	-707.4	-1,566.3	-1,509.6	7.81	5.68	-7.89
7,460.0	53.68	93.07	7,029.3	-710.1	-1,495.9	-1,439.2	10.87	10.78	1.95
7,555.0	61.34	92.31	7,080.3	-713.9	-1,416.0	-1,359.2	8.09	8.06	-0.80
7,574.8	63.63	92.17	7,089.5	-714.6	-1,398.4	-1,341.6	11.54	11.53	-0.70
Niobrara B									
7,650.0	72.29	91.69	7,117.7	-716.9	-1,328.8	-1,272.1	11.54	11.53	-0.64
7,673.9	74.55	91.41	7,124.5	-717.5	-1,305.9	-1,249.2	9.53	9.47	-1.17
Niobrara C									
7,744.0	81.19	90.62	7,139.2	-718.7	-1,237.4	-1,180.8	9.53	9.47	-1.13

Company:	PDC Energy Inc. DJ Basin	Local Co-ordinate Reference:	Well Bost Farm 9N-8C-L
Project:	SEC.7-T5N-R66W	TVD Reference:	WELL @ 4902ft (Patterson 272 - RKB 28')
Site:	Bost Farms 5-7 Pad SEC.7-T5N-R66W	MD Reference:	WELL @ 4902ft (Patterson 272 - RKB 28')
Well:	Bost Farm 9N-8C-L	North Reference:	True
Wellbore:	Bost Farm 9N-8C-L Wellbore #1	Survey Calculation Method:	Minimum Curvature
Design:	9N-8C-L_Final Surveys	Database:	US_EDM

Survey									
Measured Depth (ft)	Inclination (°)	Azimuth (°)	Vertical Depth (ft)	+N/-S (ft)	+E/-W (ft)	Vertical Section (ft)	Dogleg Rate (°/100usft)	Build Rate (°/100usft)	Turn Rate (°/100usft)
7,839.0	87.74	89.76	7,148.4	-719.0	-1,142.9	-1,086.5	6.95	6.89	-0.91
7,899.6	88.84	89.73	7,150.2	-718.8	-1,082.4	-1,026.1	1.82	1.82	-0.05
LP (2118.4' FSL, 150' FWL)									
7,934.0	89.47	89.71	7,150.7	-718.6	-1,048.0	-991.8	1.82	1.82	-0.05
8,028.0	88.77	89.74	7,152.1	-718.1	-954.0	-898.1	0.75	-0.74	0.03
8,123.0	86.07	90.87	7,156.4	-718.6	-859.1	-803.5	3.08	-2.84	1.19
8,218.0	86.36	89.94	7,162.7	-719.3	-764.3	-708.9	1.02	0.31	-0.98
8,312.0	85.95	89.01	7,169.0	-718.5	-670.5	-615.4	1.08	-0.44	-0.99
8,407.0	86.25	87.87	7,175.4	-715.9	-575.8	-521.1	1.24	0.32	-1.20
8,502.0	86.35	87.16	7,181.6	-711.8	-481.1	-427.0	0.75	0.11	-0.75
8,597.0	86.94	87.66	7,187.1	-707.5	-386.3	-332.8	0.81	0.62	0.53
8,691.0	86.49	88.36	7,192.5	-704.2	-292.5	-239.5	0.88	-0.48	0.74
8,786.0	86.87	87.73	7,198.0	-701.0	-197.7	-145.3	0.77	0.40	-0.66
8,881.0	86.49	87.68	7,203.5	-697.2	-103.0	-51.0	0.40	-0.40	-0.05
8,975.0	86.82	87.94	7,209.0	-693.6	-9.2	42.2	0.45	0.35	0.28
9,070.0	86.61	87.68	7,214.5	-690.0	85.6	136.5	0.35	-0.22	-0.27
9,165.0	86.26	87.61	7,220.4	-686.1	180.3	230.6	0.38	-0.37	-0.07
9,259.0	87.05	87.50	7,225.8	-682.1	274.1	323.8	0.85	0.84	-0.12
9,354.0	87.50	87.31	7,230.4	-677.8	368.9	418.1	0.51	0.47	-0.20
9,449.0	87.29	87.23	7,234.7	-673.3	463.6	512.3	0.24	-0.22	-0.08
9,543.0	86.76	89.29	7,239.6	-670.4	557.5	605.6	2.26	-0.56	2.19
9,638.0	87.70	89.28	7,244.2	-669.2	652.4	700.1	0.99	0.99	-0.01
9,732.0	87.02	86.57	7,248.5	-665.8	746.2	793.5	2.97	-0.72	-2.88
9,827.0	87.40	92.07	7,253.1	-664.7	841.0	888.0	5.80	0.40	5.79
9,921.0	87.37	92.40	7,257.4	-668.4	934.9	981.8	0.35	-0.03	0.35
10,015.0	87.96	92.46	7,261.2	-672.4	1,028.7	1,075.7	0.63	0.63	0.06
10,109.0	86.93	92.73	7,265.4	-676.6	1,122.5	1,169.5	1.13	-1.10	0.29
10,203.0	88.11	91.87	7,269.5	-680.4	1,216.3	1,263.4	1.55	1.26	-0.91
10,297.0	87.34	90.42	7,273.2	-682.2	1,310.2	1,357.2	1.75	-0.82	-1.54
10,391.0	88.89	90.53	7,276.3	-683.0	1,404.2	1,450.9	1.65	1.65	0.12
10,485.0	89.24	90.17	7,277.8	-683.6	1,498.2	1,544.7	0.53	0.37	-0.38
10,579.0	89.65	89.81	7,278.8	-683.6	1,592.2	1,638.4	0.58	0.44	-0.38
10,674.0	89.80	88.26	7,279.2	-682.0	1,687.1	1,733.0	1.64	0.16	-1.63
10,768.0	89.34	89.59	7,279.9	-680.2	1,781.1	1,826.6	1.50	-0.49	1.41
10,863.0	89.58	89.15	7,280.8	-679.2	1,876.1	1,921.3	0.53	0.25	-0.46
10,957.0	89.98	90.69	7,281.2	-679.0	1,970.1	2,015.0	1.69	0.43	1.64
11,052.0	89.57	88.92	7,281.5	-678.7	2,065.1	2,109.7	1.91	-0.43	-1.86
11,147.0	89.39	89.44	7,282.4	-677.4	2,160.1	2,204.3	0.58	-0.19	0.55
11,241.0	89.78	89.27	7,283.1	-676.3	2,254.1	2,298.0	0.45	0.41	-0.18
11,335.0	89.22	89.08	7,283.9	-675.0	2,348.1	2,391.6	0.63	-0.60	-0.20
11,430.0	90.04	88.54	7,284.5	-673.0	2,443.0	2,486.2	1.03	0.86	-0.57
11,524.0	90.05	90.01	7,284.4	-671.8	2,537.0	2,579.8	1.56	0.01	1.56
11,619.0	89.28	89.67	7,285.0	-671.5	2,632.0	2,674.5	0.89	-0.81	-0.36
11,713.0	90.53	89.12	7,285.2	-670.5	2,726.0	2,768.2	1.45	1.33	-0.59

Company:	PDC Energy Inc. DJ Basin	Local Co-ordinate Reference:	Well Bost Farm 9N-8C-L
Project:	SEC.7-T5N-R66W	TVD Reference:	WELL @ 4902ft (Patterson 272 - RKB 28')
Site:	Bost Farms 5-7 Pad SEC.7-T5N-R66W	MD Reference:	WELL @ 4902ft (Patterson 272 - RKB 28')
Well:	Bost Farm 9N-8C-L	North Reference:	True
Wellbore:	Bost Farm 9N-8C-L Wellbore #1	Survey Calculation Method:	Minimum Curvature
Design:	9N-8C-L_Final Surveys	Database:	US_EDM

Survey									
Measured Depth (ft)	Inclination (°)	Azimuth (°)	Vertical Depth (ft)	+N/-S (ft)	+E/-W (ft)	Vertical Section (ft)	Dogleg Rate (°/100usft)	Build Rate (°/100usft)	Turn Rate (°/100usft)
11,807.0	90.68	89.76	7,284.2	-669.6	2,820.0	2,861.9	0.70	0.16	0.68
11,901.0	89.47	89.86	7,284.0	-669.3	2,914.0	2,955.6	1.29	-1.29	0.11
11,995.0	90.67	88.96	7,283.9	-668.3	3,008.0	3,049.3	1.60	1.28	-0.96
12,089.0	90.44	89.03	7,283.0	-666.7	3,102.0	3,142.9	0.26	-0.24	0.07
12,183.0	89.60	89.74	7,283.0	-665.7	3,196.0	3,236.5	1.17	-0.89	0.76
12,278.0	90.31	89.47	7,283.1	-665.0	3,291.0	3,331.2	0.80	0.75	-0.28
12,372.0	90.14	89.49	7,282.7	-664.2	3,385.0	3,424.9	0.18	-0.18	0.02
12,464.0	90.40	90.26	7,282.3	-664.0	3,477.0	3,516.6	0.88	0.28	0.84
12,558.0	90.43	89.97	7,281.6	-664.2	3,571.0	3,610.4	0.31	0.03	-0.31
12,653.0	90.42	89.99	7,280.9	-664.1	3,666.0	3,705.1	0.02	-0.01	0.02
12,747.0	90.49	89.86	7,280.1	-664.0	3,760.0	3,798.8	0.16	0.07	-0.14
12,841.0	90.42	89.64	7,279.4	-663.6	3,854.0	3,892.5	0.25	-0.07	-0.23
12,936.0	90.64	90.02	7,278.5	-663.3	3,949.0	3,987.2	0.46	0.23	0.40
13,030.0	90.31	90.74	7,277.7	-663.9	4,042.9	4,081.0	0.84	-0.35	0.77
13,124.0	90.24	91.23	7,277.3	-665.5	4,136.9	4,174.9	0.53	-0.07	0.52
13,218.0	90.22	91.10	7,276.9	-667.5	4,230.9	4,268.7	0.14	-0.02	-0.14
13,312.0	90.19	90.93	7,276.6	-669.1	4,324.9	4,362.6	0.18	-0.03	-0.18
13,407.0	89.75	91.51	7,276.6	-671.1	4,419.9	4,457.4	0.77	-0.46	0.61
13,502.0	90.01	91.27	7,276.8	-673.4	4,514.8	4,552.3	0.37	0.27	-0.25
13,596.0	90.56	91.20	7,276.3	-675.5	4,608.8	4,646.2	0.59	0.59	-0.07
13,690.0	90.47	90.20	7,275.5	-676.6	4,702.8	4,740.0	1.07	-0.10	-1.06
13,785.0	90.32	90.50	7,274.8	-677.2	4,797.8	4,834.8	0.35	-0.16	0.32
13,879.0	89.95	89.92	7,274.6	-677.5	4,891.8	4,928.6	0.73	-0.39	-0.62
13,973.0	90.11	90.02	7,274.6	-677.5	4,985.8	5,022.3	0.20	0.17	0.11
14,067.0	90.47	89.45	7,274.1	-677.1	5,079.8	5,116.0	0.72	0.38	-0.61
14,162.0	90.31	90.19	7,273.4	-676.8	5,174.8	5,210.7	0.80	-0.17	0.78
14,257.0	90.02	87.25	7,273.2	-674.6	5,269.8	5,305.3	3.11	-0.31	-3.09
14,351.0	89.90	86.36	7,273.2	-669.4	5,363.6	5,398.5	0.96	-0.13	-0.95
14,446.0	90.12	85.81	7,273.2	-662.9	5,458.4	5,492.5	0.62	0.23	-0.58
14,540.0	90.39	89.24	7,272.8	-658.9	5,552.3	5,585.8	3.66	0.29	3.65
14,634.0	90.30	89.58	7,272.2	-657.9	5,646.3	5,679.5	0.37	-0.10	0.36
14,728.0	94.35	90.91	7,268.4	-658.3	5,740.2	5,773.2	4.53	4.31	1.41
14,822.0	89.70	90.44	7,265.1	-659.4	5,834.1	5,866.9	4.97	-4.95	-0.50
14,916.0	89.73	90.50	7,265.6	-660.2	5,928.1	5,960.7	0.07	0.03	0.06
15,011.0	89.77	90.58	7,266.0	-661.1	6,023.1	6,055.5	0.09	0.04	0.08
15,105.0	88.10	89.29	7,267.7	-661.0	6,117.1	6,149.2	2.24	-1.78	-1.37
15,199.0	88.30	89.03	7,270.7	-659.6	6,211.0	6,242.8	0.35	0.21	-0.28
15,293.0	88.82	88.89	7,273.0	-657.9	6,305.0	6,336.4	0.57	0.55	-0.15
15,387.0	88.81	89.56	7,275.0	-656.6	6,398.9	6,430.0	0.71	-0.01	0.71
15,481.0	88.69	89.40	7,277.0	-655.8	6,492.9	6,523.6	0.21	-0.13	-0.17
15,575.0	88.58	89.53	7,279.3	-654.9	6,586.9	6,617.3	0.18	-0.12	0.14
15,670.0	90.45	89.04	7,280.1	-653.7	6,681.9	6,711.9	2.03	1.97	-0.52
15,764.0	90.37	87.38	7,279.4	-650.8	6,775.8	6,805.4	1.77	-0.09	-1.77

Company:	PDC Energy Inc. DJ Basin	Local Co-ordinate Reference:	Well Bost Farm 9N-8C-L
Project:	SEC.7-T5N-R66W	TVD Reference:	WELL @ 4902ft (Patterson 272 - RKB 28')
Site:	Bost Farms 5-7 Pad SEC.7-T5N-R66W	MD Reference:	WELL @ 4902ft (Patterson 272 - RKB 28')
Well:	Bost Farm 9N-8C-L	North Reference:	True
Wellbore:	Bost Farm 9N-8C-L Wellbore #1	Survey Calculation Method:	Minimum Curvature
Design:	9N-8C-L_Final Surveys	Database:	US_EDM

Survey										
Measured Depth (ft)	Inclination (°)	Azimuth (°)	Vertical Depth (ft)	+N/-S (ft)	+E/-W (ft)	Vertical Section (ft)	Dogleg Rate (°/100usft)	Build Rate (°/100usft)	Turn Rate (°/100usft)	
15,858.0	90.04	86.36	7,279.1	-645.6	6,869.7	6,898.6	1.14	-0.35	-1.09	
15,952.0	90.21	89.15	7,278.9	-641.9	6,963.6	6,992.0	2.97	0.18	2.97	
16,046.0	90.15	94.25	7,278.6	-644.7	7,057.5	7,085.9	5.43	-0.06	5.43	
16,140.0	90.90	95.13	7,277.7	-652.4	7,151.2	7,179.9	1.23	0.80	0.94	
16,234.0	92.71	91.18	7,274.8	-657.6	7,245.0	7,273.8	4.62	1.93	-4.20	
16,328.0	91.16	90.27	7,271.6	-658.8	7,338.9	7,367.6	1.91	-1.65	-0.97	
16,422.0	89.28	90.54	7,271.2	-659.4	7,432.9	7,461.3	2.02	-2.00	0.29	
16,516.0	89.57	91.06	7,272.2	-660.7	7,526.9	7,555.2	0.63	0.31	0.55	
16,610.0	89.38	91.08	7,273.0	-662.5	7,620.9	7,649.0	0.20	-0.20	0.02	
16,704.0	90.17	91.38	7,273.4	-664.5	7,714.8	7,742.9	0.90	0.84	0.32	
16,798.0	91.25	91.76	7,272.2	-667.1	7,808.8	7,836.8	1.22	1.15	0.40	
16,892.0	91.41	89.86	7,270.0	-668.4	7,902.8	7,930.6	2.03	0.17	-2.02	
16,986.0	90.43	88.92	7,268.5	-667.4	7,996.7	8,024.2	1.44	-1.04	-1.00	
17,080.0	90.14	88.60	7,268.1	-665.4	8,090.7	8,117.8	0.46	-0.31	-0.34	
17,175.0	90.32	88.26	7,267.7	-662.8	8,185.7	8,212.3	0.40	0.19	-0.36	
17,269.0	90.06	88.43	7,267.4	-660.1	8,279.6	8,305.8	0.33	-0.28	0.18	
17,363.0	89.69	89.06	7,267.6	-658.0	8,373.6	8,399.4	0.78	-0.39	0.67	
17,457.0	88.84	89.38	7,268.8	-656.7	8,467.6	8,493.0	0.97	-0.90	0.34	
17,551.0	89.11	89.96	7,270.5	-656.2	8,561.6	8,586.7	0.68	0.29	0.62	
17,645.0	89.60	90.31	7,271.5	-656.4	8,655.6	8,680.4	0.64	0.52	0.37	
17,740.0	90.51	90.71	7,271.4	-657.3	8,750.6	8,775.2	1.05	0.96	0.42	
17,836.0	91.67	91.11	7,269.6	-658.8	8,846.5	8,871.0	1.28	1.21	0.42	
17,865.0	91.67	91.11	7,268.8	-659.3	8,875.5	8,900.0	0.00	0.00	0.00	
BHL (2171.7' FSL, 466.8' FEL)										

Formations						
Measured Depth (ft)	Vertical Depth (ft)	Name	Lithology	Dip (°)	Dip Direction (°)	
787.6	787.5	Fox Hills Aq Base				
3,881.3	3,741.5	Parkman				
4,471.8	4,288.5	Sussex				
5,169.5	4,932.5	Shannon				
7,291.6	6,911.5	Sharon Springs				
7,339.1	6,947.5	Niobrara A				
7,574.8	7,089.5	Niobrara B				
7,673.9	7,124.5	Niobrara C				

Company:	PDC Energy Inc. DJ Basin	Local Co-ordinate Reference:	Well Bost Farm 9N-8C-L
Project:	SEC.7-T5N-R66W	TVD Reference:	WELL @ 4902ft (Patterson 272 - RKB 28')
Site:	Bost Farms 5-7 Pad SEC.7-T5N-R66W	MD Reference:	WELL @ 4902ft (Patterson 272 - RKB 28')
Well:	Bost Farm 9N-8C-L	North Reference:	True
Wellbore:	Bost Farm 9N-8C-L Wellbore #1	Survey Calculation Method:	Minimum Curvature
Design:	9N-8C-L_Final Surveys	Database:	US_EDM

Design Annotations

Measured Depth (ft)	Vertical Depth (ft)	Local Coordinates		Comment
		+N/-S (ft)	+E/-W (ft)	
7,899.6	7,150.2	-718.8	-1,082.4	LP (2118.4' FSL, 150' FWL)
17,865.0	7,268.8	-659.3	8,875.5	BHL (2171.7' FSL, 466.8' FEL)