

Company: PDC Energy Inc

Well: Bost Farm 9N-8C-L

Field Name: Wattenberg

Country Name: United States

State Name: Colorado

County Name: Weld

Xbolt GAMMA RAY

1in/100ft Measured Depth

Final Print

Recorded Mode

Schlumberger

Company: PDC Energy Inc

Well: Bost Farm 9N-8C-L

Field Name: Wattenberg

Country Name: United States

State Name: Colorado

County Name: Weld

Latitude: 40°24'52.711"N

Longitude: 104°49'40.544"W

Spud Date: 12-May-2022

API Number: 05-123-51446

Rig Name: Patterson 272

Rig Type: Land rig

Log Interval: 1640.00--17865.00(ft)

Depth Source: Driller's Depth

Job Number: 22CC00114

Print Type: Final Print

Log Measured From: Drill Floor

Drill Floor Elevation:4902(ft)

Ground Level Elevation:4874(ft)

Permanent Datum:Sea Level

Northing: 1394603.60(ft)

Easting: 3187136.52(ft)

Coordinate System:Plane, Northern Zone, US Feet

Disclaimer

THE USE OF AND RELIANCE UPON THIS RECORDED-DATA BY THE HEREIN NAMED COMPANY (AND ANY OF ITS AFFILIATES, PARTNERS, REPRESENTATIVES, AGENTS, CONSULTANTS AND EMPLOYEES) IS SUBJECT TO THE TERMS AND CONDITIONS AGREED UPON BETWEEN SCHLUMBERGER AND THE COMPANY, INCLUDING: (a) RESTRICTIONS ON USE OF THE RECORDED-DATA; (b) DISCLAIMERS AND WAIVERS OF WARRANTIES AND REPRESENTATIONS REGARDING COMPANY'S USE AND RELIANCE UPON THE RECORDED-DATA; AND (c) CUSTOMER'S FULL AND SOLE RESPONSIBILITY FOR ANY INFERENCE DRAWN OR DECISION MADE IN CONNECTION WITH THE USE OF THIS RECORDED-DATA.

Operational Run Summary

Notes

Run 1 (Bit Size: 8.5 in)

DateTime Log Started	12-May-2022 11:01:12	DateTime Log Finished	15-May-2022 14:15:45
Start Depth (ft)	1608	Stop Depth (ft)	17865
Mud Type	Oil Based Mud	Mud Density (lbm/gal)	10.2
Potassium (%)	0	Barite	No
GR Sensor Offset (ft)	25.6	Calibration Coefficient	0
DNI Sensor Offset (ft)	29.24		

Log

Description: Xbolt GAMMA RAY

Format: XBOLT\_PDC\_Bost Farm

Index Scale: 1in/100ft

Index Unit: ft

Index Type: Measured Depth

Creation Date: 15-May-2022

TVD_RT	Depth	ROP5_RT	TEMP_RT,XBOLT
1,500 ft, Borehole 7,500	1 : 100	0 ft/h, Borehole 1,000	0 degF, Borehole 300

GR\_RM,XBOLT

in : ft

gAPI, Borehole

300

First GR Reading

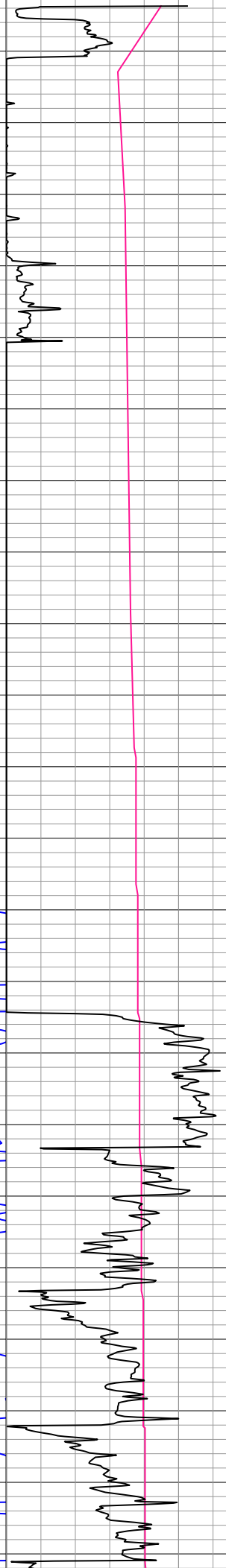
1,639  
1,700  
1,750  
1,800  
1,850  
1,900  
1,950  
2,000  
2,050  
2,100  
2,150  
2,200  
2,250  
2,300  
2,350  
2,400  
2,450  
2,500  
2,550  
2,600  
2,650  
2,700  
2,750

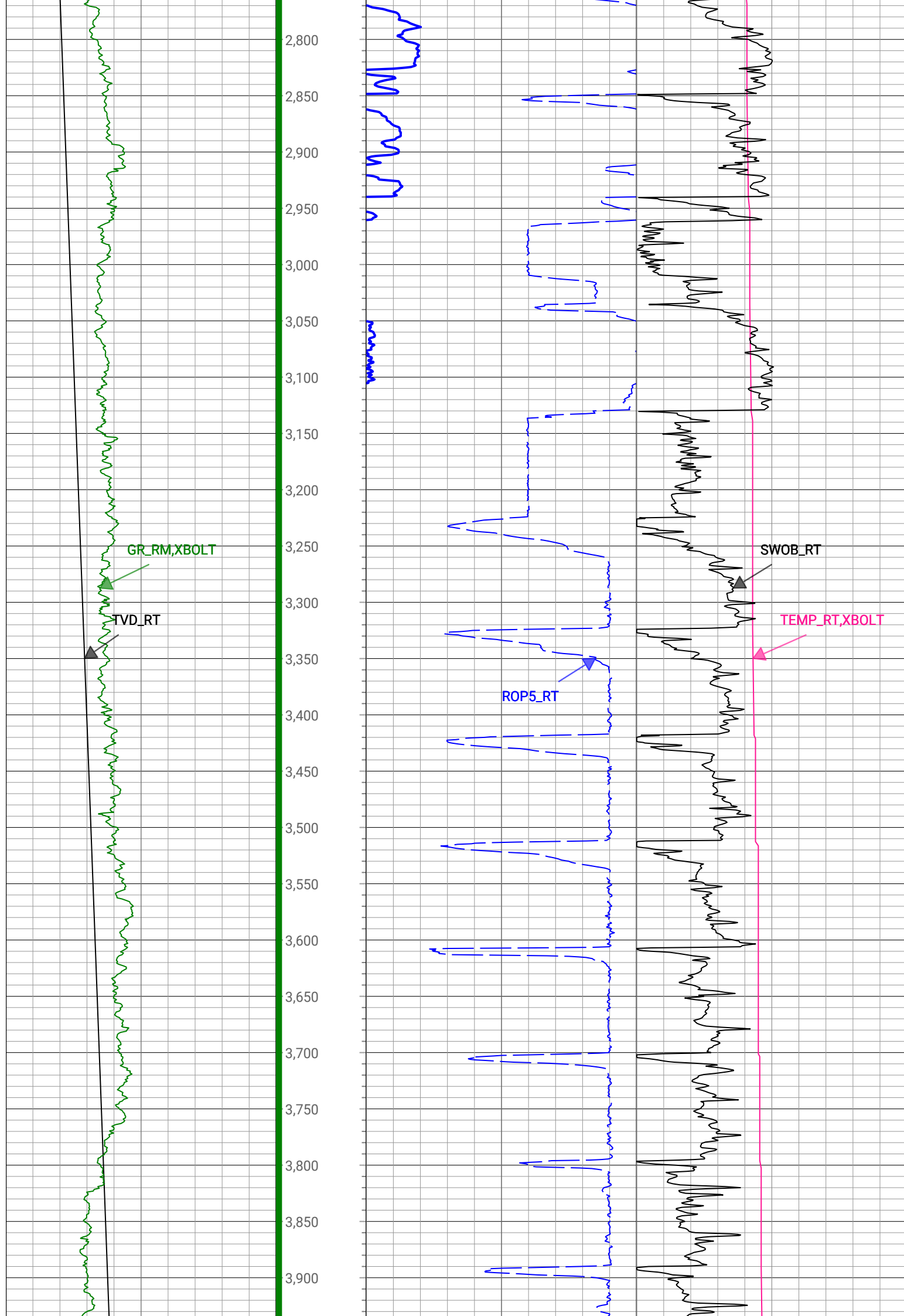
SWOB\_RT

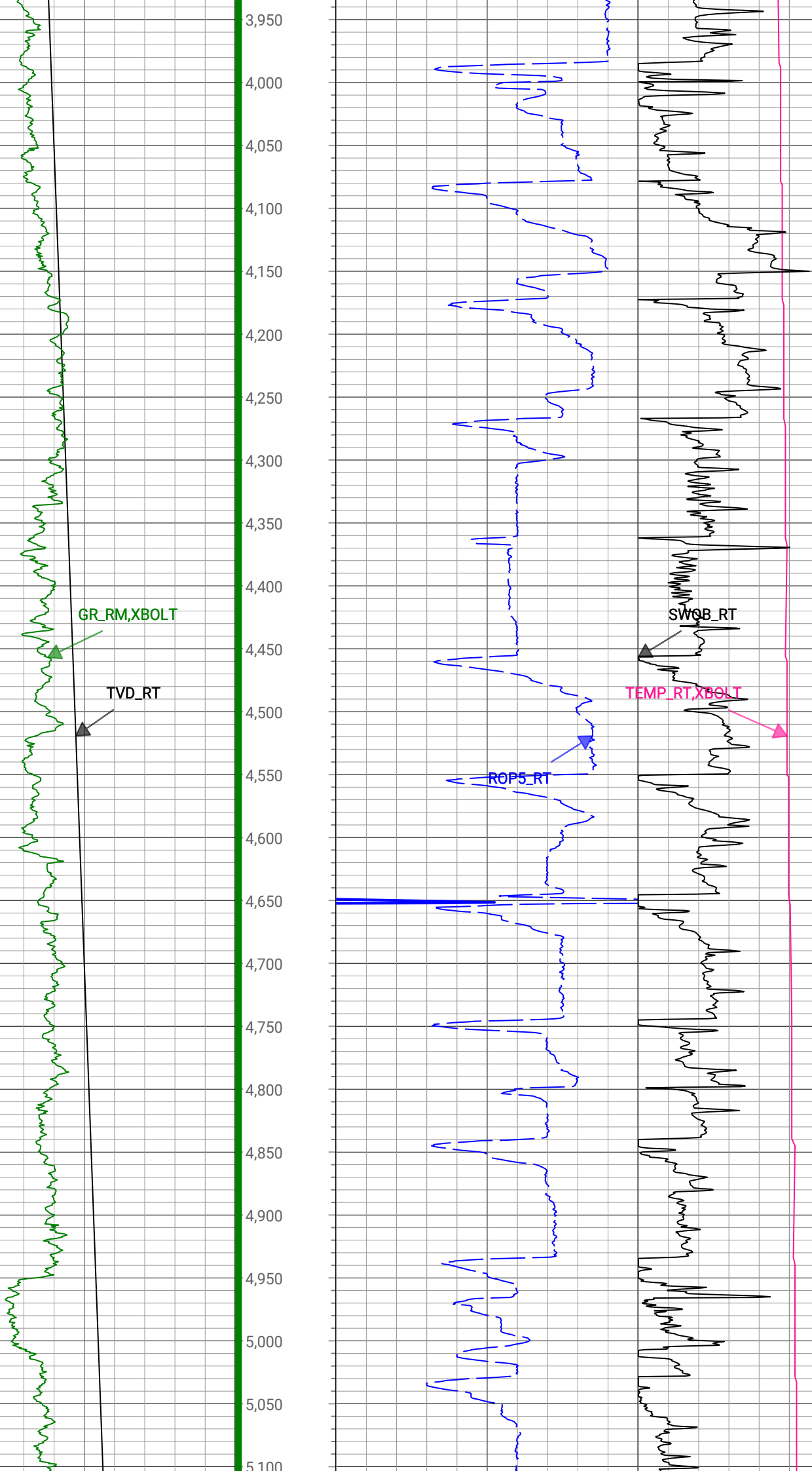
0

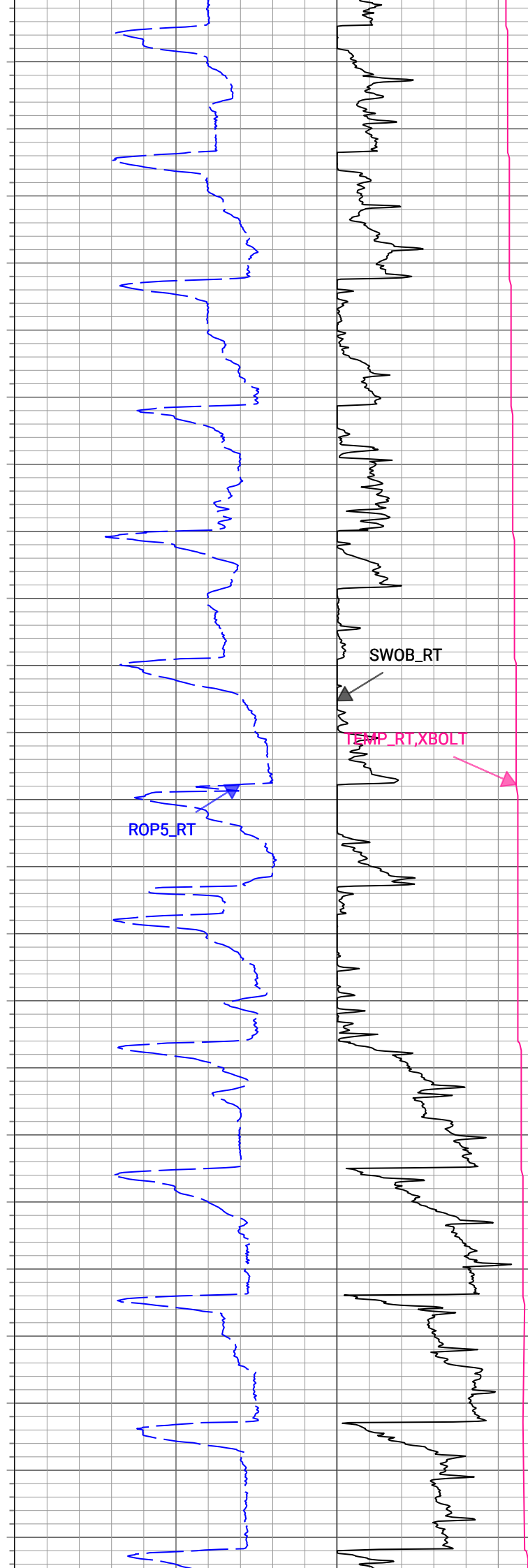
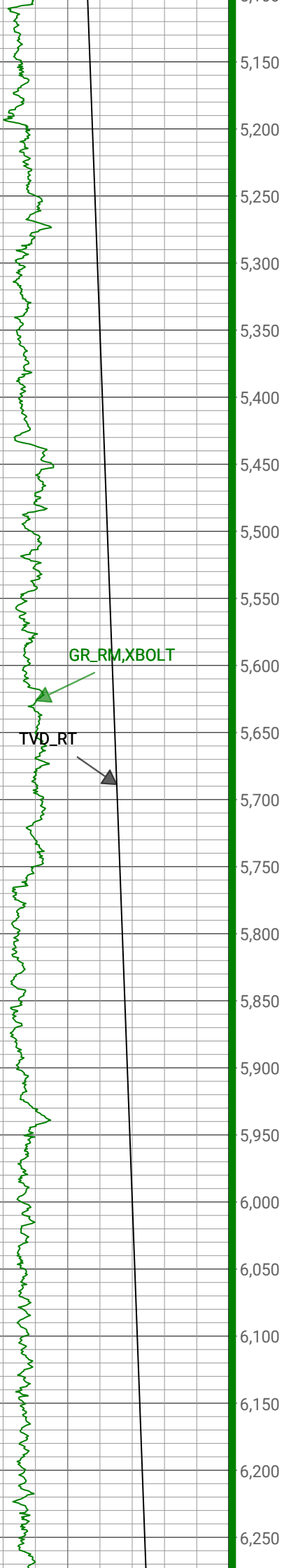
1000 lbf, Borehole

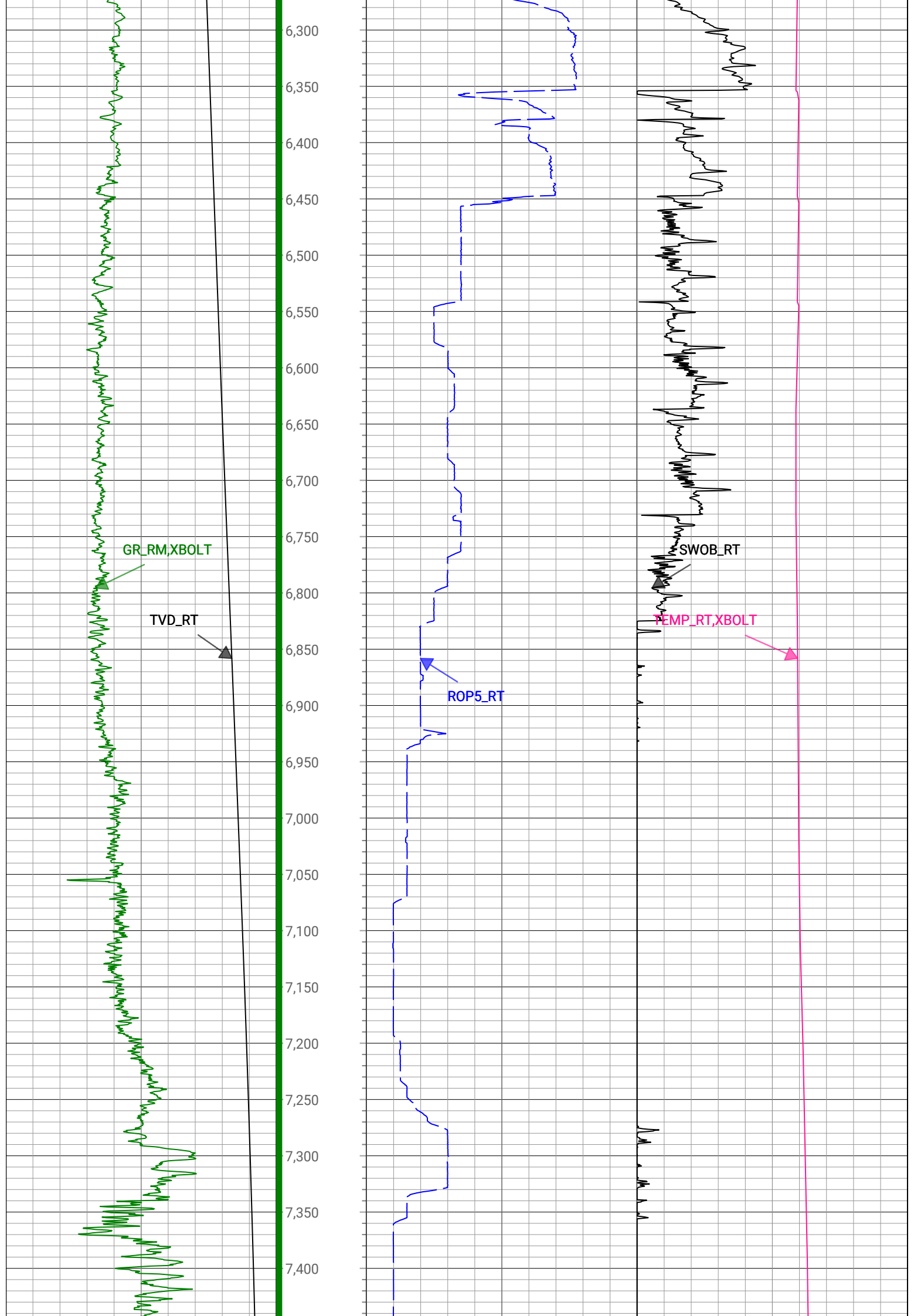
50

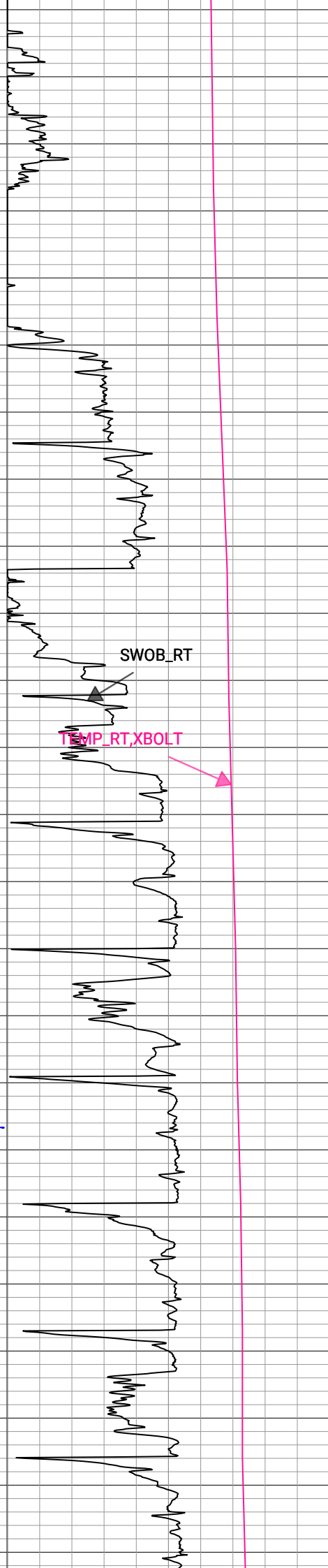
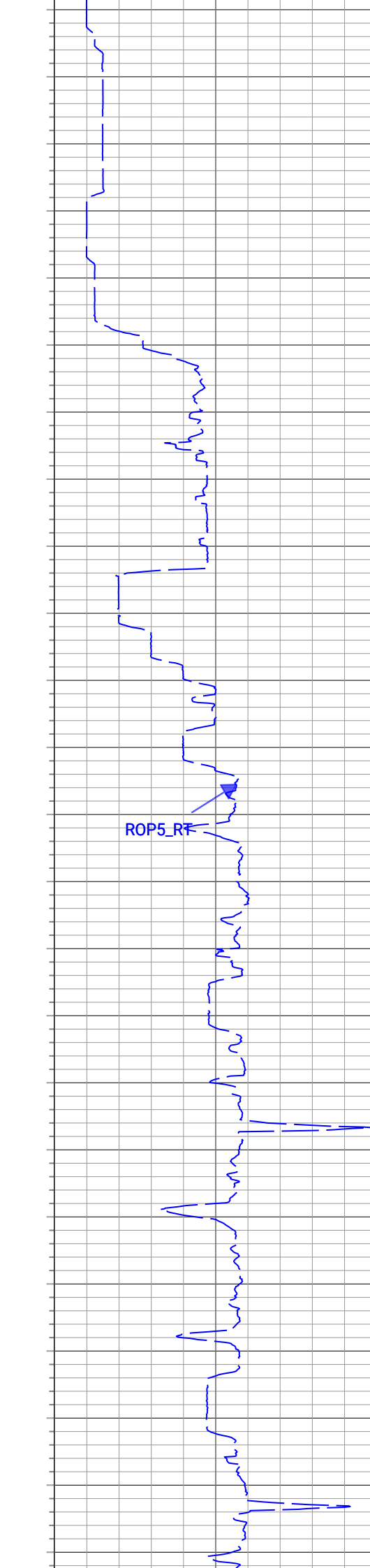
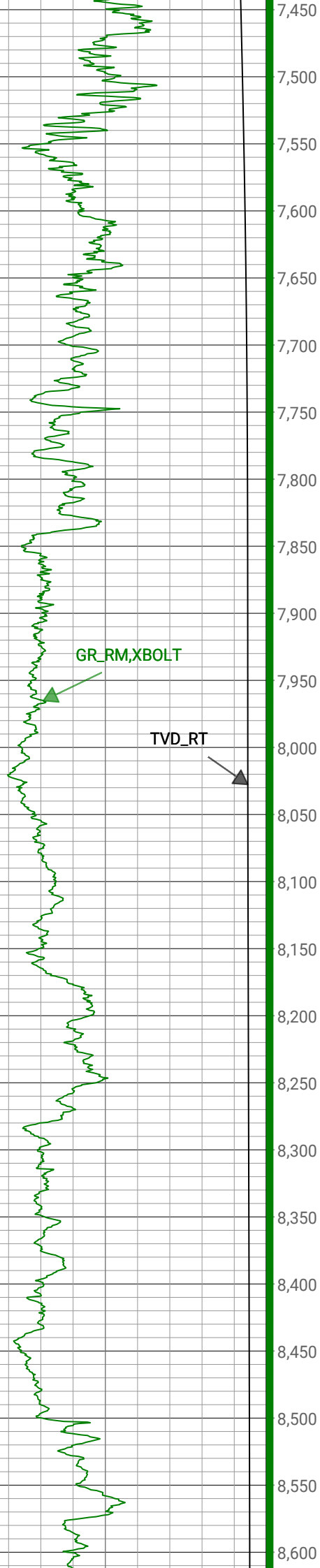


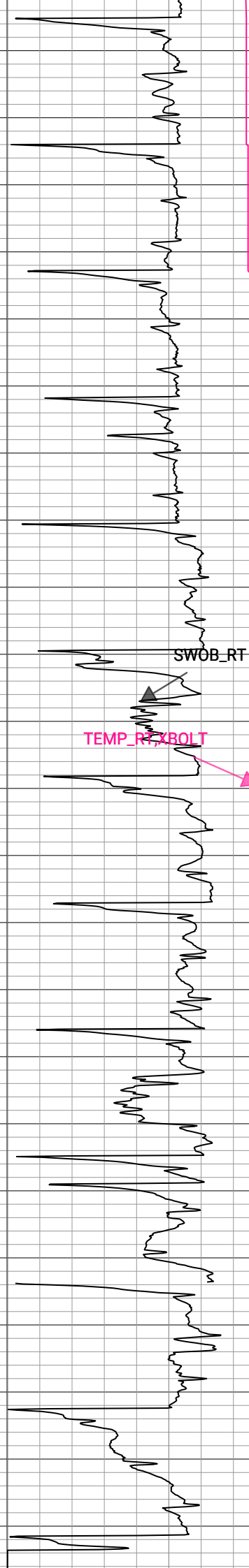
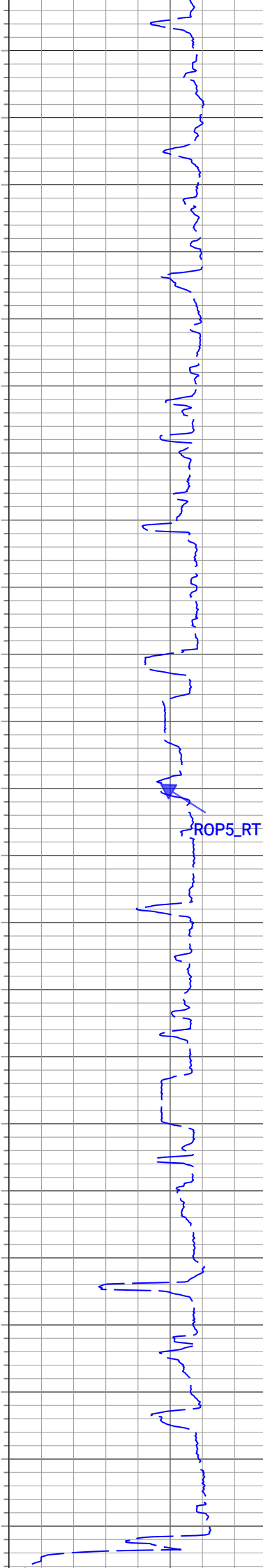
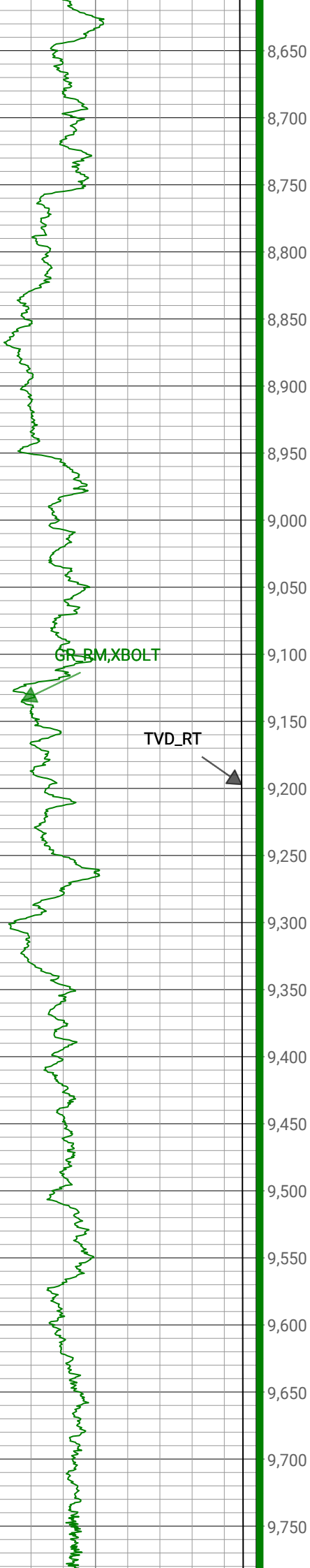




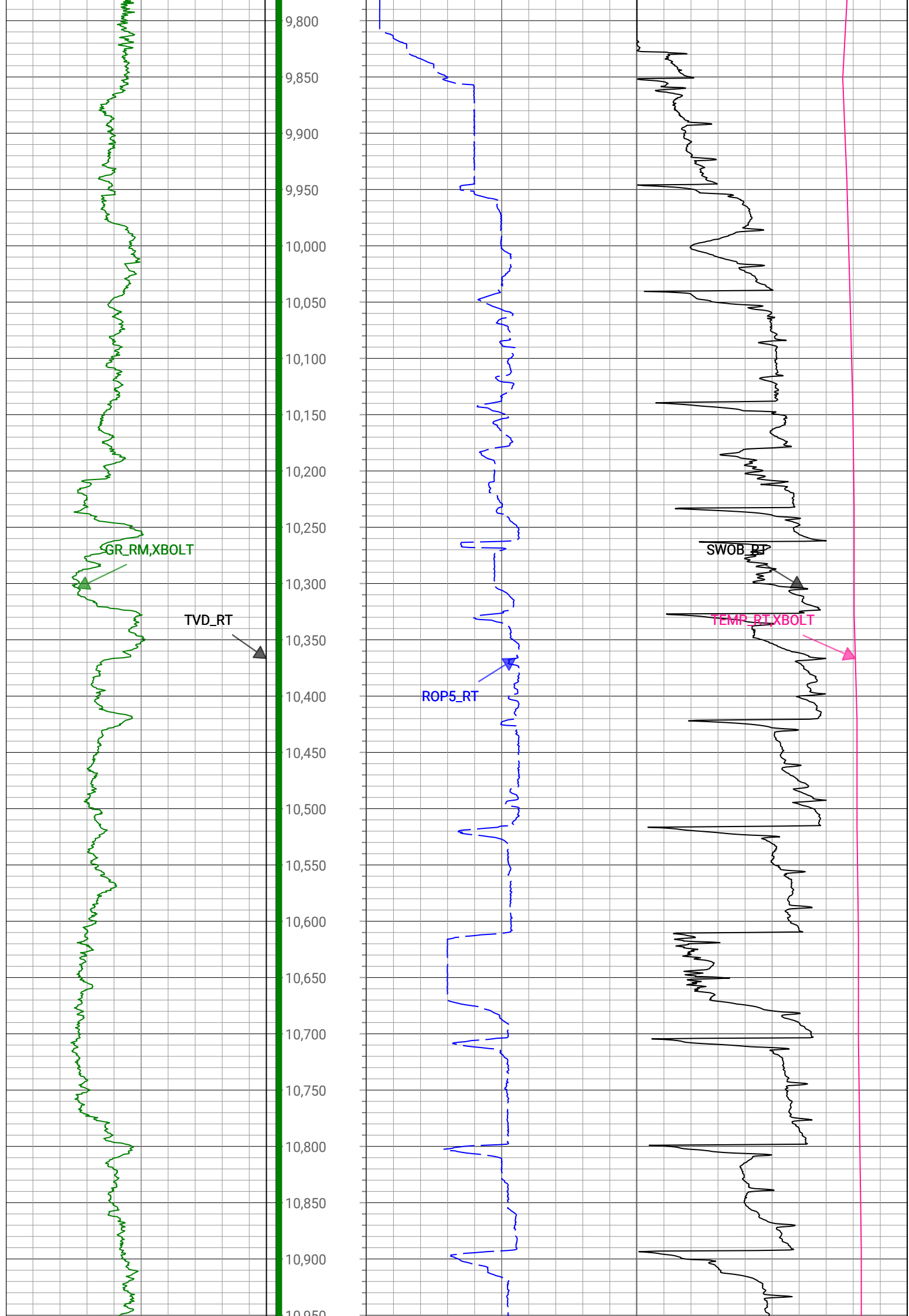


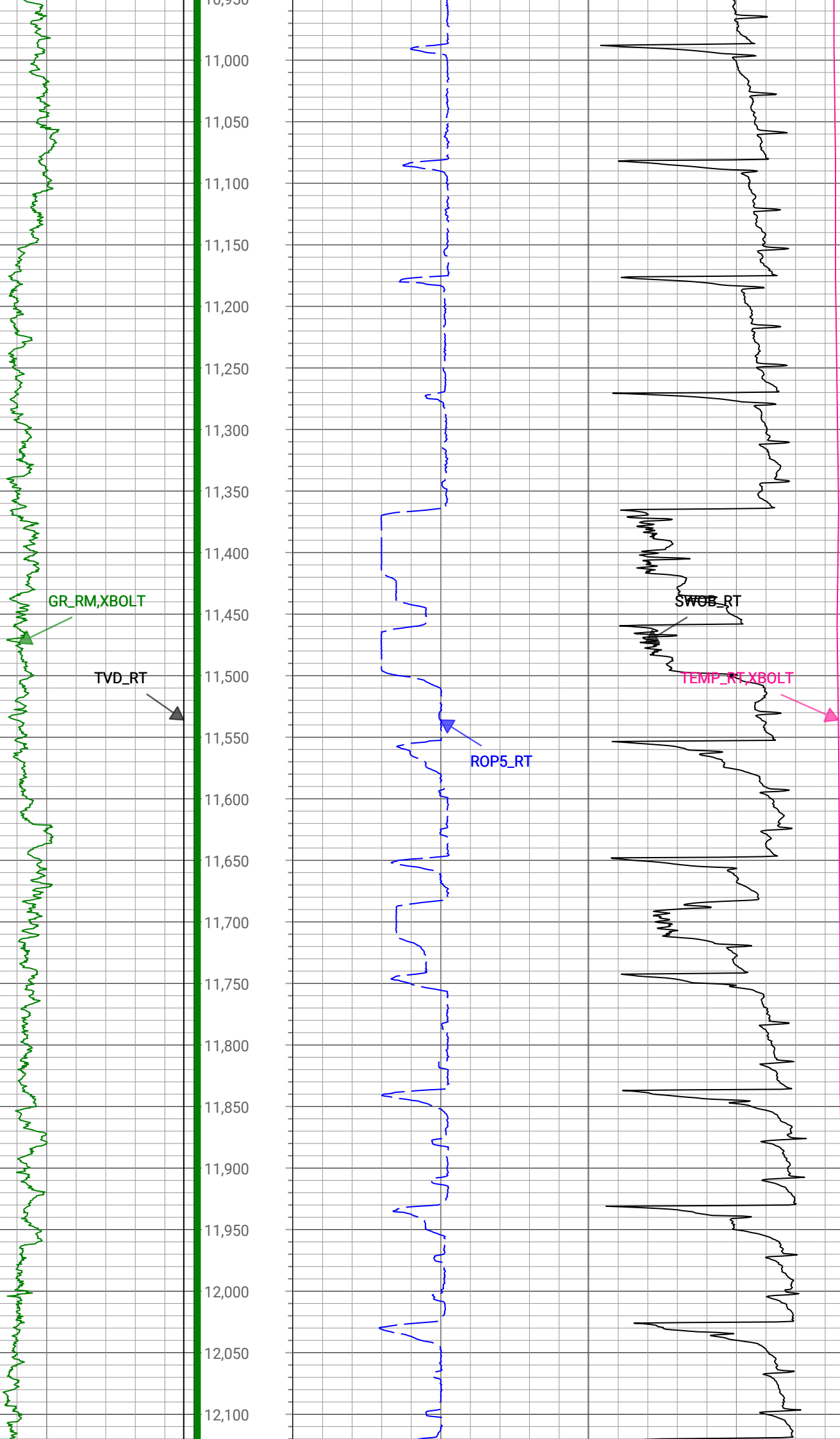


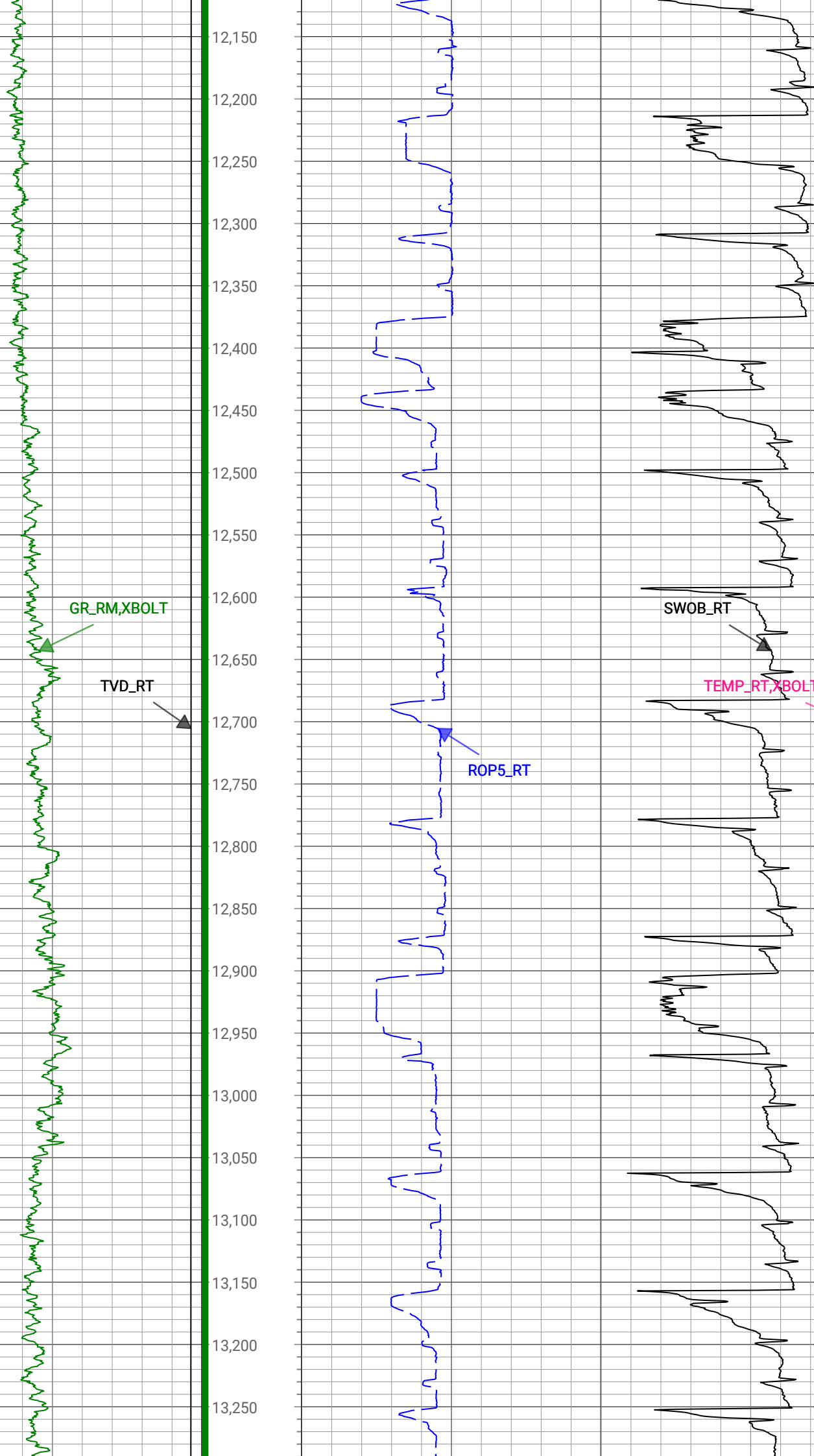


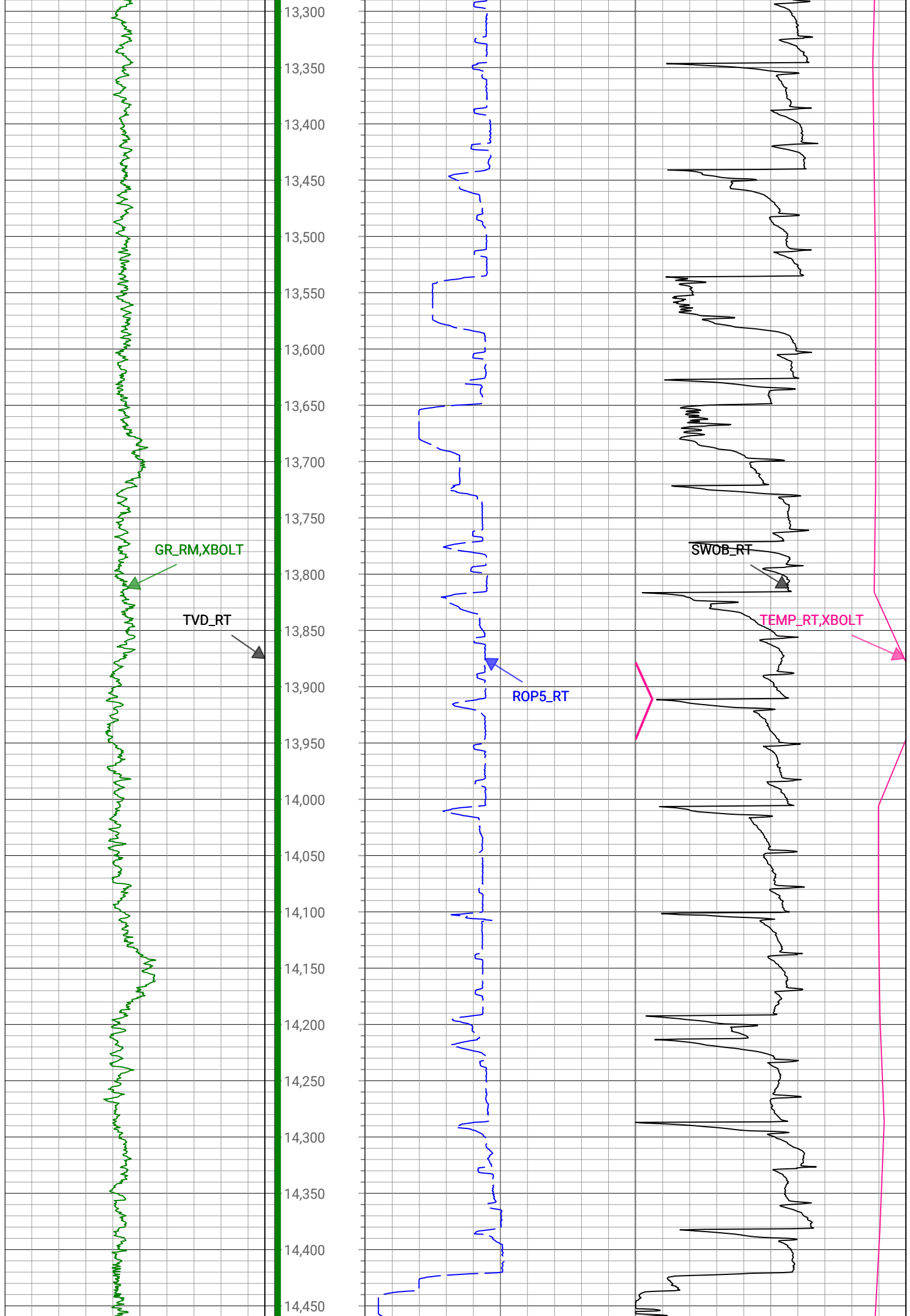


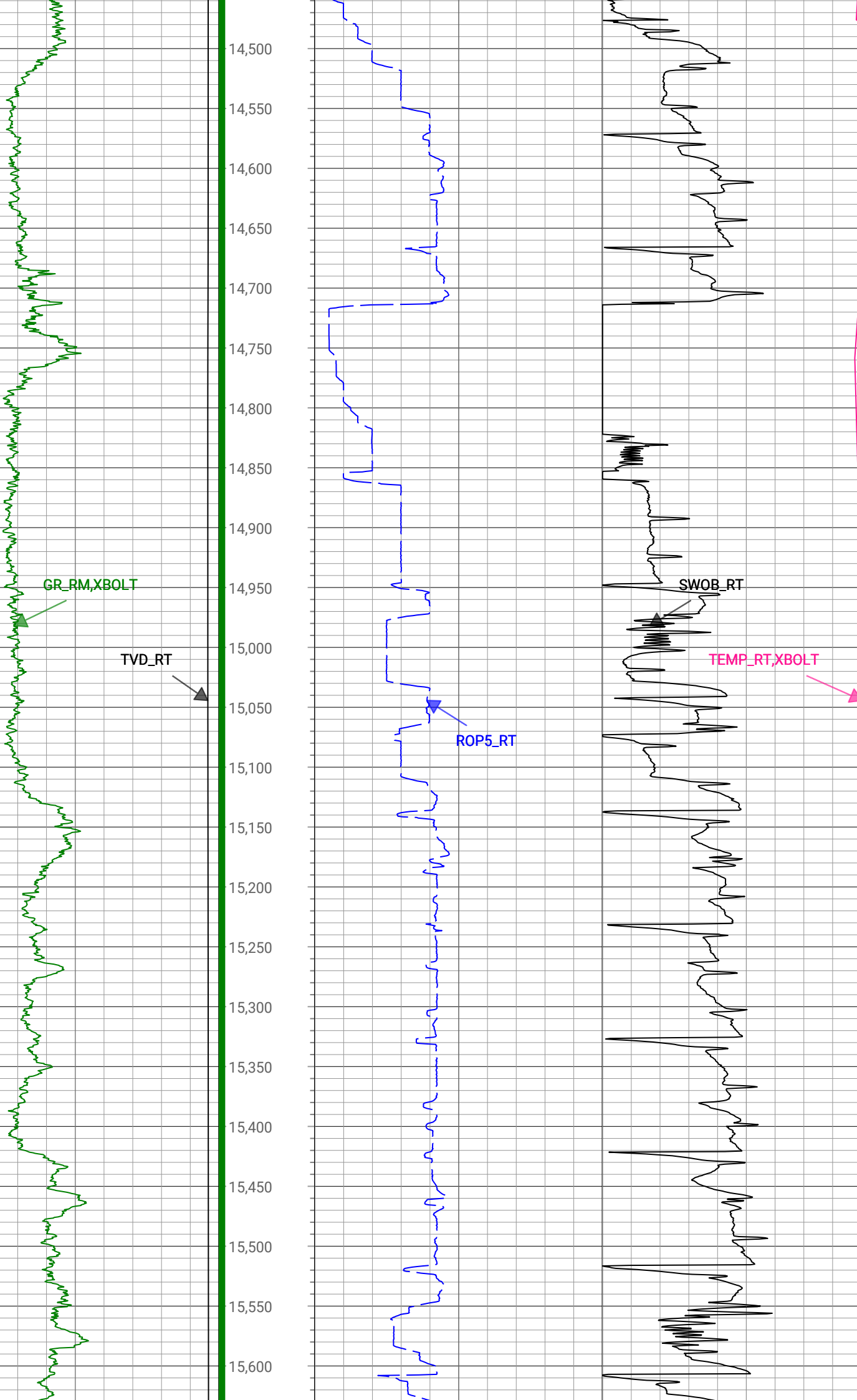


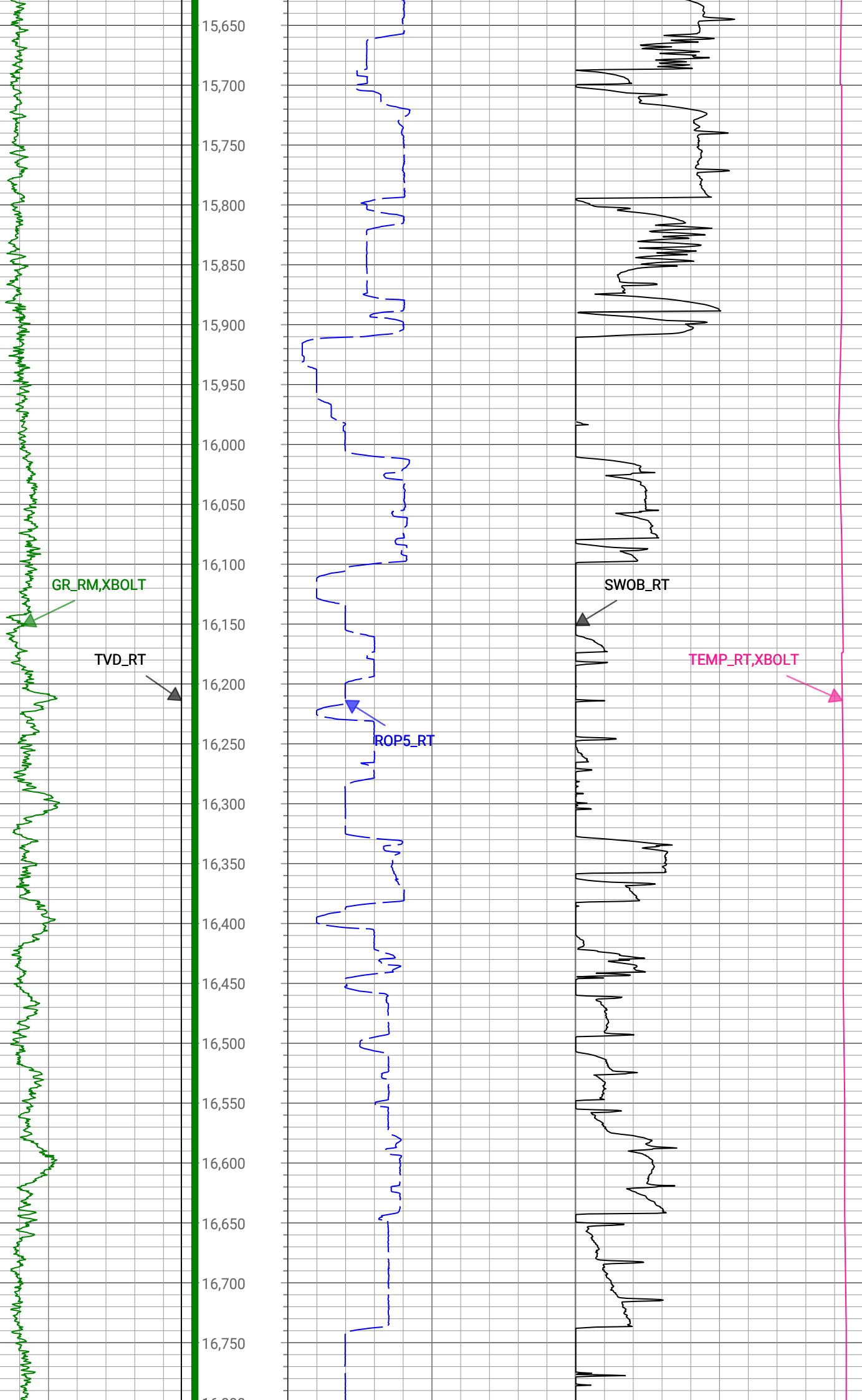


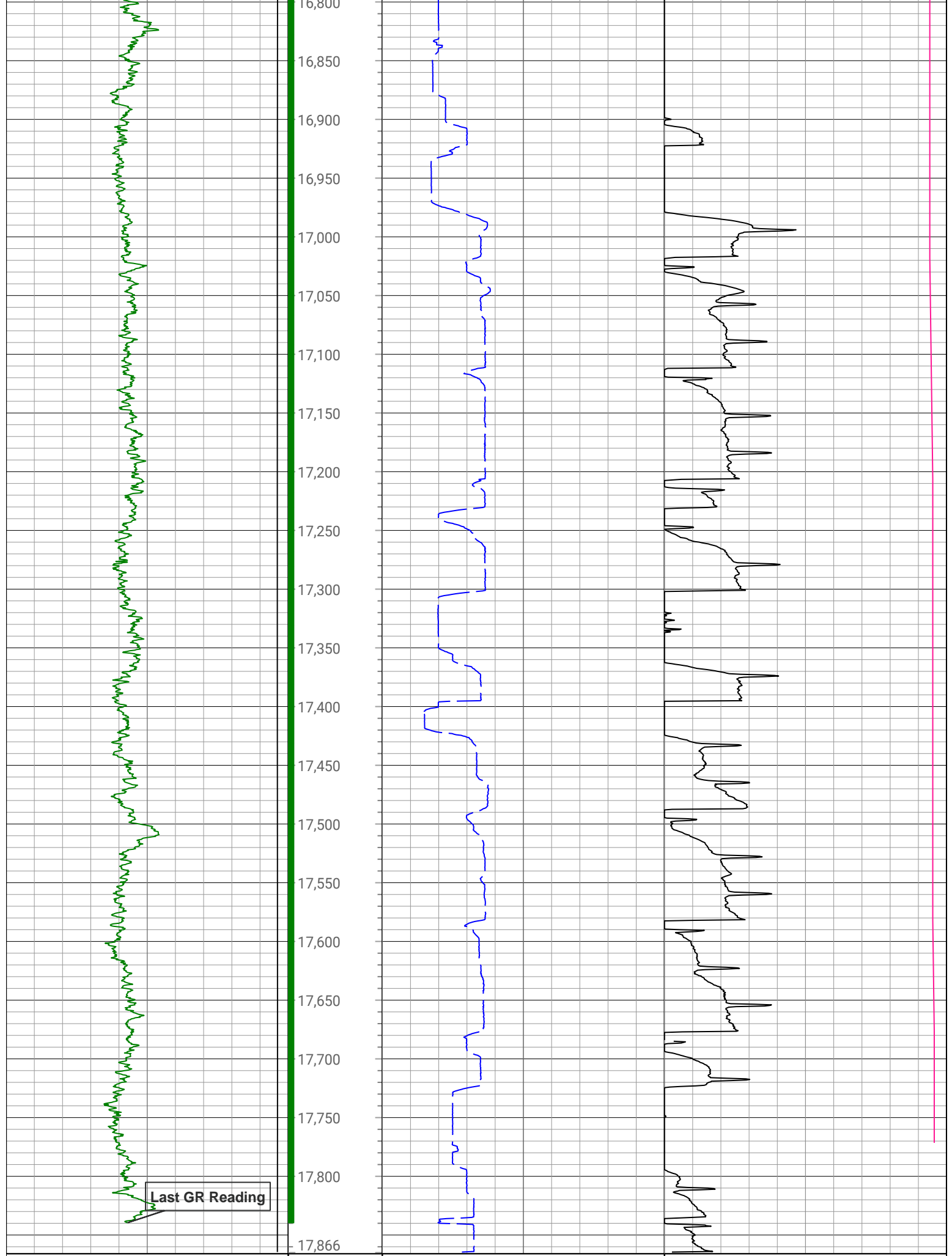












1,500	TVD_RT	7,500	0	ROP5_RT	1,000	0	TEMP_RT, XBOLT	300
ft, Borehole			ft/h, Borehole			degF, Borehole		
0	GR_RM, XBOLT	300				0	SWOB_RT	50
gAPI, Borehole						1000 lbf, Borehole		

Survey Record

Survey Calculation

North Reference:True North

Tie In Point

Measured Depth:0(ft)Inclination:0(deg)Azimuth:0(deg)

True Vertical Depth:0(ft)North Displacement:0(ft)East Displacement:0(ft)

D&I Inits - Run - 1

Geomagnetic Model:HDGM 2022Geomagnetic Date:19-Mar-2022 18:00:00

Location B:51945(nT)Location G:999.024(mgn)

Magnetic Dip:66.5(deg)Magnetic Dec:7.353(deg)

Total Correction:7.353

MD(ft)	Incl(deg)	Azim(deg)	TVD(ft)	V Sec(ft)	N/-S(ft)	E/-W(ft)	DLS (deg/100ft)	Closure Distance (ft)	Closure Azimuth (deg)	Tool Type
0	0	0	0	0.00	0	0	0.00			TIP
161.5	0.7	179.7	161.5	0.08	-0.99	0.01	0.43	0.99	179.7	MWD
252.5	0.7	199.7	252.49	-0.03	-2.07	-0.18	0.27	2.07	184.96	MWD
344.5	0.9	207.1	344.48	-0.45	-3.24	-0.7	0.24	3.31	192.16	MWD
433.5	0.5	211.3	433.47	-0.9	-4.19	-1.22	0.45	4.37	196.2	MWD
522.5	0.4	205	522.47	-1.19	-4.81	-1.55	0.13	5.05	197.89	MWD
612.5	0.6	233.8	612.47	-1.66	-5.37	-2.06	0.35	5.75	201.03	MWD
702.5	1.2	251.9	702.46	-2.89	-5.94	-3.34	0.73	6.81	209.35	MWD
791.5	0.8	2.6	791.45	-3.77	-5.61	-4.2	1.87	7.01	216.81	MWD
880.5	0.3	30.1	880.44	-3.69	-4.79	-4.05	0.62	6.27	220.26	MWD
970.5	0.5	7	970.44	-3.56	-4.19	-3.89	0.28	5.72	222.83	MWD
1059.5	1.1	272.8	1059.44	-4.4	-3.77	-4.69	1.39	6.02	231.26	MWD
1149.5	2.5	249.4	1149.39	-7.04	-4.41	-7.39	1.73	8.61	239.16	MWD
1238.5	4	245.6	1238.24	-11.53	-6.38	-12.04	1.7	13.62	242.08	MWD
1328.5	6.4	253.8	1327.87	-18.98	-9.08	-19.71	2.78	21.7	245.28	MWD
1417.5	7.7	255.8	1416.19	-29.29	-11.92	-30.26	1.49	32.52	248.49	MWD
1506.5	9	250	1504.25	-41.29	-15.77	-42.58	1.74	45.41	249.68	MWD
1608.5	10.1	253.1	1604.84	-56.9	-21.1	-58.64	1.19	62.31	250.21	MWD
1780	12.07	249.04	1773.13	-87.15	-31.88	-89.77	1.23	95.27	250.45	Manual
1874	13.8	243.53	1864.74	-105.68	-40.4	-108.99	2.26	116.23	249.66	Manual
1969	16.33	245.8	1956.47	-127.16	-50.92	-131.32	2.73	140.84	248.8	Manual
2064	16.38	251.84	2047.64	-151.28	-60.57	-156.23	1.79	167.56	248.81	Manual
2158	16.59	253.62	2137.77	-176.09	-68.49	-181.7	0.58	194.18	249.35	Manual
2253	18.45	254.71	2228.36	-202.95	-76.28	-209.21	1.99	222.68	249.97	Manual
2348	20.98	252.9	2317.79	-232.96	-85.24	-239.97	2.74	254.66	250.44	Manual
2442	22.26	254.05	2405.17	-265.34	-95.09	-273.18	1.43	289.25	250.81	Manual
2537	21.56	254.05	2493.31	-298.6	-104.83	-307.26	0.74	324.65	251.16	Manual
2631	21.97	253.4	2580.61	-331.24	-114.6	-340.72	0.51	359.47	251.41	Manual
2726	21.56	250.21	2668.84	-363.79	-125.58	-374.17	1.32	394.69	251.45	Manual
2820	22.51	250.65	2755.97	-396.04	-137.39	-407.4	1.03	429.95	251.36	Manual
2915	21.54	252.04	2844.04	-428.85	-148.8	-441.15	1.16	465.57	251.36	Manual
3010	21.41	250.36	2932.44	-460.84	-160	-474.07	0.66	500.35	251.35	Manual
3105	21.44	246.67	3020.88	-492.08	-172.71	-506.35	1.42	534.99	251.17	Manual



3199	21.98	248.13	3108.22	-523.1	-186.06	-538.45	0.81	569.69	250.94	Manual
3295	22.59	247.49	3197.05	-555.69	-199.81	-572.16	0.68	606.04	250.75	Manual
3389	21.68	247.38	3284.12	-587.29	-213.41	-604.86	0.97	641.41	250.57	Manual
3484	21.67	248.15	3372.4	-618.69	-226.68	-637.34	0.3	676.45	250.42	Manual
3579	21.7	248.75	3460.68	-650.29	-239.58	-669.99	0.24	711.53	250.32	Manual
3673	21.11	248.46	3548.19	-681.21	-252.09	-701.93	0.64	745.83	250.24	Manual
3768	22.07	248.52	3636.53	-712.69	-264.91	-734.45	1.01	780.77	250.17	Manual
3863	22.21	248.71	3724.52	-744.96	-277.96	-767.79	0.17	816.56	250.1	Manual
3957	21.87	248.04	3811.65	-776.7	-290.96	-800.58	0.45	851.81	250.03	Manual
4052	21.83	249.18	3899.83	-808.56	-303.85	-833.5	0.45	887.16	249.97	Manual
4146	21.61	249.47	3987.15	-840.11	-316.14	-866.05	0.26	921.94	249.95	Manual
4241	22.4	248.86	4075.23	-872.34	-328.8	-899.31	0.87	957.54	249.92	Manual
4336	22.38	249.47	4163.07	-905.1	-341.67	-933.13	0.25	993.72	249.89	Manual
4430	22.63	249.91	4249.91	-937.82	-354.16	-966.88	0.32	1029.7	249.88	Manual
4525	22.96	249.76	4337.49	-971.33	-366.85	-1001.43	0.35	1066.5	249.88	Manual
4620	22.46	250.35	4425.13	-1004.78	-379.36	-1035.9	0.58	1103.18	249.89	Manual
4715	22.56	251.78	4512.89	-1038.21	-391.16	-1070.3	0.59	1139.54	249.92	Manual
4809	22.58	251.1	4599.69	-1071.46	-402.64	-1104.5	0.28	1175.6	249.97	Manual
4904	22.67	249.73	4687.38	-1104.88	-414.89	-1138.93	0.56	1212.15	249.98	Manual
4999	22.57	249.95	4775.07	-1138.15	-427.49	-1173.23	0.14	1248.69	249.98	Manual
5094	22.5	249.14	4862.82	-1171.22	-440.21	-1207.34	0.33	1285.09	249.97	Manual
5188	22.83	250.61	4949.56	-1204.2	-452.67	-1241.35	0.7	1321.31	249.97	Manual
5283	22.52	248.87	5037.22	-1237.52	-465.34	-1275.71	0.78	1357.93	249.96	Manual
5378	22.24	249.5	5125.06	-1270.28	-478.2	-1309.52	0.39	1394.1	249.94	Manual
5472	22.31	249.65	5212.05	-1302.65	-490.63	-1342.91	0.1	1429.73	249.93	Manual
5567	22.97	250.66	5299.73	-1336.03	-503.04	-1377.31	0.81	1466.3	249.94	Manual
5662	21.18	250.85	5387.76	-1368.76	-514.81	-1411.01	1.89	1501.99	249.96	Manual
5756	21.78	250.44	5475.23	-1400.3	-526.22	-1443.49	0.66	1536.41	249.97	Manual
5851	21.98	250.34	5563.39	-1432.67	-538.1	-1476.84	0.21	1571.81	249.98	Manual
5946	22.13	250.47	5651.44	-1465.29	-550.07	-1510.44	0.17	1607.49	249.99	Manual
6041	22.69	249.93	5739.26	-1498.36	-562.34	-1544.52	0.63	1643.7	249.99	Manual
6135	22.16	250.31	5826.15	-1531.08	-574.53	-1578.24	0.58	1679.56	250	Manual
6230	22.12	250.43	5914.15	-1563.81	-586.56	-1611.96	0.06	1715.36	250	Manual
6325	22.45	251.25	6002.05	-1596.87	-598.38	-1645.99	0.48	1751.38	250.02	Manual
6420	21.95	250.66	6090.01	-1629.83	-610.09	-1679.92	0.58	1787.27	250.04	Manual
6514	22.28	250.36	6177.09	-1662.22	-621.9	-1713.28	0.37	1822.66	250.05	Manual
6609	17.22	234.15	6266.54	-1689.47	-636.21	-1741.68	7.8	1854.24	249.93	Manual
6704	10.38	214.31	6358.8	-1704.54	-651.54	-1757.93	8.66	1874.78	249.66	Manual
6798	4.57	166.14	6452.03	-1707.62	-662.19	-1761.81	8.59	1882.14	249.4	Manual
6893	8.36	82.29	6546.57	-1699.67	-664.94	-1754.04	9.56	1875.85	249.24	Manual
6988	12.91	95.98	6639.93	-1682.29	-665.12	-1736.63	5.45	1859.65	249.04	Manual
7082	18.3	120.6	6730.53	-1658.52	-673.74	-1713.45	8.97	1841.15	248.53	Manual
7177	29.22	109.97	6817.39	-1622.71	-689.31	-1678.69	12.3	1814.71	247.68	Manual
7271	38.35	99.33	6895.5	-1571.42	-701.91	-1628.2	11.54	1773.05	246.68	Manual
7366	43.55	91.24	6967.28	-1509.3	-707.4	-1566.31	7.81	1718.65	245.69	Manual
7460	53.68	93.07	7029.34	-1438.91	-710.14	-1495.94	10.87	1655.94	244.61	Manual
7555	61.34	92.31	7080.33	-1358.87	-713.87	-1415.95	8.09	1585.73	243.24	Manual
7650	72.29	91.69	7117.68	-1271.75	-716.9	-1328.81	11.54	1509.86	241.65	Manual
7744	81.19	90.62	7139.22	-1180.48	-718.72	-1237.43	9.53	1431.01	239.85	Manual
7839	87.74	89.76	7148.38	-1086.22	-719.03	-1142.93	6.95	1350.29	237.83	Manual

7934	89.47	89.71	7150.69	-991.55	-718.6	-1047.96	1.82	1270.67	235.56	Manual
8028	88.77	89.74	7152.13	-897.85	-718.14	-953.97	0.75	1194.07	233.03	Manual
8123	86.07	90.87	7156.41	-803.19	-718.65	-859.08	3.08	1120.03	230.09	Manual
8218	86.36	89.94	7162.68	-708.61	-719.32	-764.29	1.02	1049.55	226.74	Manual
8312	85.95	89.01	7168.98	-615.15	-718.46	-670.51	1.08	982.73	223.02	Manual
8407	86.25	87.87	7175.45	-520.86	-715.88	-575.76	1.24	918.69	218.81	Manual
8502	86.35	87.16	7181.58	-426.72	-711.77	-481.05	0.75	859.08	214.05	Manual
8597	86.94	87.66	7187.14	-332.56	-707.48	-386.31	0.81	806.08	208.64	Manual
8691	86.49	88.36	7192.52	-239.28	-704.22	-292.52	0.88	762.56	202.56	Manual
8786	86.87	87.73	7198.03	-145	-700.99	-197.74	0.77	728.34	195.75	Manual
8881	86.49	87.68	7203.53	-50.78	-697.19	-102.98	0.4	704.75	188.4	Manual
8975	86.82	87.94	7209.01	42.46	-693.6	-9.2	0.45	693.67	180.76	Manual
9070	86.61	87.68	7214.46	136.71	-689.98	85.57	0.35	695.27	172.93	Manual
9165	86.26	87.61	7220.36	230.89	-686.08	180.31	0.38	709.38	165.28	Manual
9259	87.05	87.5	7225.85	324.08	-682.08	274.06	0.85	735.08	158.11	Manual
9354	87.5	87.31	7230.36	418.3	-677.78	368.85	0.51	771.65	151.44	Manual
9449	87.29	87.23	7234.68	512.49	-673.26	463.65	0.24	817.47	145.45	Manual
9543	86.76	89.29	7239.56	605.84	-670.41	557.47	2.26	871.91	140.26	Manual
9638	87.7	89.28	7244.15	700.37	-669.23	652.35	0.99	934.58	135.73	Manual
9732	87.02	86.57	7248.48	793.69	-665.83	746.18	2.97	1000.06	131.74	Manual
9827	87.4	92.07	7253.11	888.18	-664.71	841.03	5.8	1071.99	128.32	Manual
9921	87.37	92.4	7257.4	982.03	-668.37	934.86	0.35	1149.21	125.56	Manual
10015	87.96	92.46	7261.23	1075.9	-672.35	1028.69	0.63	1228.93	123.17	Manual
10109	86.93	92.73	7265.42	1169.77	-676.6	1122.5	1.13	1310.65	121.08	Manual
10203	88.11	91.87	7269.49	1263.62	-680.37	1216.34	1.55	1393.69	119.22	Manual
10297	87.34	90.42	7273.22	1357.4	-682.25	1310.24	1.75	1477.22	117.51	Manual
10391	88.89	90.53	7276.31	1451.14	-683.03	1404.18	1.65	1561.49	115.94	Manual
10485	89.24	90.17	7277.84	1544.91	-683.6	1498.17	0.53	1646.76	114.53	Manual
10579	89.65	89.81	7278.75	1638.64	-683.58	1592.16	0.58	1732.71	113.24	Manual
10674	89.8	88.26	7279.21	1733.24	-681.98	1687.15	1.64	1819.77	112.01	Manual
10768	89.34	89.59	7279.92	1826.83	-680.22	1781.13	1.5	1906.6	110.9	Manual
10863	89.58	89.15	7280.81	1921.48	-679.18	1876.12	0.53	1995.27	109.9	Manual
10957	89.98	90.69	7281.17	2015.2	-679.04	1970.11	1.69	2083.85	109.02	Manual
11052	89.57	88.92	7281.54	2109.91	-678.72	2065.11	1.91	2173.78	108.19	Manual
11147	89.39	89.44	7282.41	2204.53	-677.36	2160.09	0.58	2263.81	107.41	Manual
11241	89.78	89.27	7283.09	2298.18	-676.3	2254.08	0.45	2353.36	106.7	Manual
11335	89.22	89.08	7283.91	2391.81	-674.95	2348.07	0.63	2443.15	106.04	Manual
11430	90.04	88.54	7284.52	2486.37	-672.98	2443.05	1.03	2534.04	105.4	Manual
11524	90.05	90.01	7284.45	2580.01	-671.79	2537.04	1.56	2624.47	104.83	Manual
11619	89.28	89.67	7285	2674.73	-671.52	2632.03	0.89	2716.35	104.31	Manual
11713	90.53	89.12	7285.16	2768.38	-670.53	2726.03	1.45	2807.28	103.82	Manual
11807	90.68	89.76	7284.17	2862.05	-669.61	2820.02	0.7	2898.43	103.36	Manual
11901	89.47	89.86	7284.04	2955.76	-669.3	2914.01	1.29	2989.89	102.94	Manual
11995	90.67	88.96	7283.93	3049.42	-668.33	3008.01	1.6	3081.36	102.53	Manual
12089	90.44	89.03	7283.02	3143.02	-666.68	3101.99	0.26	3172.82	102.13	Manual
12183	89.6	89.74	7282.99	3236.67	-665.67	3195.98	1.17	3264.57	101.77	Manual
12278	90.31	89.47	7283.06	3331.36	-665.02	3290.98	0.8	3357.5	101.42	Manual
12372	90.14	89.49	7282.69	3425.03	-664.17	3384.97	0.18	3449.52	101.1	Manual
12464	90.4	90.26	7282.26	3516.76	-663.97	3476.97	0.88	3539.8	100.81	Manual
12558	90.43	89.97	7281.58	3610.51	-664.15	3570.97	0.31	3632.2	100.54	Manual

12653	90.42	89.99	7280.87	3705.24	-664.12	3665.96	0.02	3725.63	100.27	Manual
12747	90.49	89.86	7280.13	3798.96	-664	3759.96	0.16	3818.14	100.02	Manual
12841	90.42	89.64	7279.38	3892.67	-663.59	3853.96	0.25	3910.67	99.77	Manual
12936	90.64	90.02	7278.5	3987.38	-663.31	3948.95	0.46	4004.27	99.53	Manual
13030	90.31	90.74	7277.72	4081.16	-663.93	4042.95	0.84	4097.1	99.33	Manual
13124	90.24	91.23	7277.27	4175	-665.55	4136.93	0.53	4190.13	99.14	Manual
13218	90.22	91.1	7276.89	4268.86	-667.46	4230.91	0.14	4283.24	98.96	Manual
13312	90.19	90.93	7276.56	4362.71	-669.12	4324.9	0.18	4376.35	98.79	Manual
13407	89.75	91.51	7276.61	4457.58	-671.14	4419.87	0.77	4470.54	98.63	Manual
13502	90.01	91.27	7276.8	4552.46	-673.45	4514.85	0.37	4564.8	98.48	Manual
13596	90.56	91.2	7276.34	4646.32	-675.47	4608.82	0.59	4658.06	98.34	Manual
13690	90.47	90.2	7275.49	4740.14	-676.62	4702.81	1.07	4751.24	98.19	Manual
13785	90.32	90.5	7274.84	4834.91	-677.2	4797.81	0.35	4845.36	98.03	Manual
13879	89.95	89.92	7274.62	4928.67	-677.55	4891.8	0.73	4938.5	97.89	Manual
13973	90.11	90.02	7274.57	5022.41	-677.5	4985.8	0.2	5031.63	97.74	Manual
14067	90.47	89.45	7274.09	5116.11	-677.06	5079.8	0.72	5124.72	97.59	Manual
14162	90.31	90.19	7273.44	5210.82	-676.77	5174.8	0.8	5218.86	97.45	Manual
14257	90.02	87.25	7273.17	5305.37	-674.64	5269.76	3.11	5312.77	97.3	Manual
14351	89.9	86.36	7273.24	5398.57	-669.4	5363.62	0.96	5405.23	97.11	Manual
14446	90.12	85.81	7273.22	5492.6	-662.92	5458.39	0.62	5498.5	96.92	Manual
14540	90.39	89.24	7272.8	5585.94	-658.86	5552.29	3.66	5591.25	96.77	Manual
14634	90.3	89.58	7272.23	5679.6	-657.89	5646.29	0.37	5684.48	96.65	Manual
14728	94.35	90.91	7268.42	5773.27	-658.29	5740.19	4.53	5777.81	96.54	Manual
14822	89.7	90.44	7265.1	5867	-659.4	5834.09	4.97	5871.24	96.45	Manual
14916	89.73	90.5	7265.57	5960.79	-660.17	5928.09	0.07	5964.74	96.35	Manual
15011	89.77	90.58	7265.98	6055.59	-661.06	6023.08	0.09	6059.25	96.26	Manual
15105	88.1	89.29	7267.73	6149.3	-660.96	6117.06	2.24	6152.67	96.17	Manual
15199	88.3	89.03	7270.68	6242.88	-659.58	6211.01	0.35	6245.93	96.06	Manual
15293	88.82	88.89	7273.05	6336.44	-657.87	6304.96	0.57	6339.19	95.96	Manual
15387	88.81	89.56	7274.99	6430.06	-656.6	6398.93	0.71	6432.53	95.86	Manual
15481	88.69	89.4	7277.04	6523.71	-655.75	6492.91	0.21	6525.93	95.77	Manual
15575	88.58	89.53	7279.28	6617.35	-654.87	6586.87	0.18	6619.35	95.68	Manual
15670	90.45	89.04	7280.08	6711.98	-653.69	6681.86	2.03	6713.76	95.59	Manual
15764	90.37	87.38	7279.41	6805.45	-650.75	6775.81	1.77	6806.99	95.49	Manual
15858	90.04	86.36	7279.07	6898.67	-645.62	6869.67	1.14	6899.94	95.37	Manual
15952	90.21	89.15	7278.87	6992.05	-641.94	6963.58	2.97	6993.11	95.27	Manual
16046	90.15	94.25	7278.57	7085.93	-644.73	7057.51	5.43	7086.9	95.22	Manual
16140	90.9	95.13	7277.71	7179.92	-652.41	7151.19	1.23	7180.89	95.21	Manual
16234	92.71	91.18	7274.75	7273.83	-657.58	7244.98	4.62	7274.76	95.19	Manual
16328	91.16	90.27	7271.58	7367.59	-658.77	7338.91	1.91	7368.42	95.13	Manual
16422	89.28	90.54	7271.22	7461.37	-659.43	7432.91	2.02	7462.1	95.07	Manual
16516	89.57	91.06	7272.16	7555.2	-660.75	7526.89	0.63	7555.84	95.02	Manual
16610	89.38	91.08	7273.02	7649.05	-662.5	7620.87	0.2	7649.61	94.97	Manual
16704	90.17	91.38	7273.39	7742.91	-664.52	7714.85	0.9	7743.42	94.92	Manual
16798	91.25	91.76	7272.22	7836.8	-667.1	7808.8	1.22	7837.25	94.88	Manual
16892	91.41	89.86	7270.04	7930.6	-668.42	7902.77	2.03	7930.98	94.83	Manual
16986	90.43	88.92	7268.53	8024.24	-667.42	7996.75	1.44	8024.55	94.77	Manual
17080	90.14	88.6	7268.07	8117.81	-665.39	8090.72	0.46	8118.04	94.7	Manual
17175	90.32	88.26	7267.68	8212.31	-662.79	8185.69	0.4	8212.47	94.63	Manual
17269	90.06	88.43	7267.27	8305.81	-660.07	8270.65	0.33	8205.02	94.56	Manual

17209	90.00	88.43	7207.37	8303.81	-660.07	8279.03	0.33	8303.92	94.30	Manual
17363	89.69	89.06	7267.58	8399.37	-658.01	8373.62	0.78	8399.44	94.49	Manual
17457	88.84	89.38	7268.78	8493	-656.73	8467.61	0.97	8493.03	94.43	Manual
17551	89.11	89.96	7270.47	8586.68	-656.19	8561.59	0.68	8586.7	94.38	Manual
17645	89.6	90.31	7271.52	8680.43	-656.41	8655.58	0.64	8680.44	94.34	Manual
17740	90.51	90.71	7271.43	8775.22	-657.26	8750.58	1.05	8775.23	94.3	Manual
17836	91.67	91.11	7269.61	8871.04	-658.78	8846.55	1.28	8871.04	94.26	Manual
17865	91.67	91.11	7268.76	8899.98	-659.34	8875.53	0	8899.98	94.25	Manual

Company:

PDC Energy Inc

Well:

Bost Farm 9N-8C-L

Field Name:

Wattenberg

Country Name:


United States

State Name:

Colorado

County Name:

Weld



Xbolt GAMMA RAY

1in/100ft Measured Depth

Final Print

Recorded Mode