



PDC Energy Inc. DJ Basin

SEC.7-T5N-R66W

Bost Farms 5-7 Pad SEC.7-T5N-R66W

Bost Farm 9N-8B-L

Bost Farm 9N-8B-L Wellbore #1

Survey: Surface

Standard Survey Report

16 May, 2022

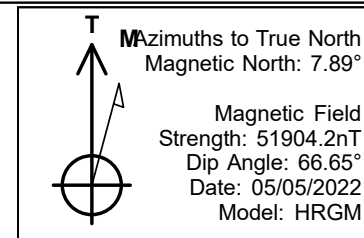


PDC Energy Inc. DJ Basin

Bost Farm 9N-8B-L
 Bost Farms 5-7 Pad SEC.7-T5N-R66W
 North American Datum 1983 , US State Plane 1983, Colorado Northern Zone
 Ground Elevation: 4874.0
 +N/-S +E/-W Northing Easting Longitude Slot
 0.0 0.0 1394603.41 3187116.50 40.414642 -104.828001
 Patterson 272 - RKB 28WELL @ 4902ft (Patterson 272 - RKB 28')



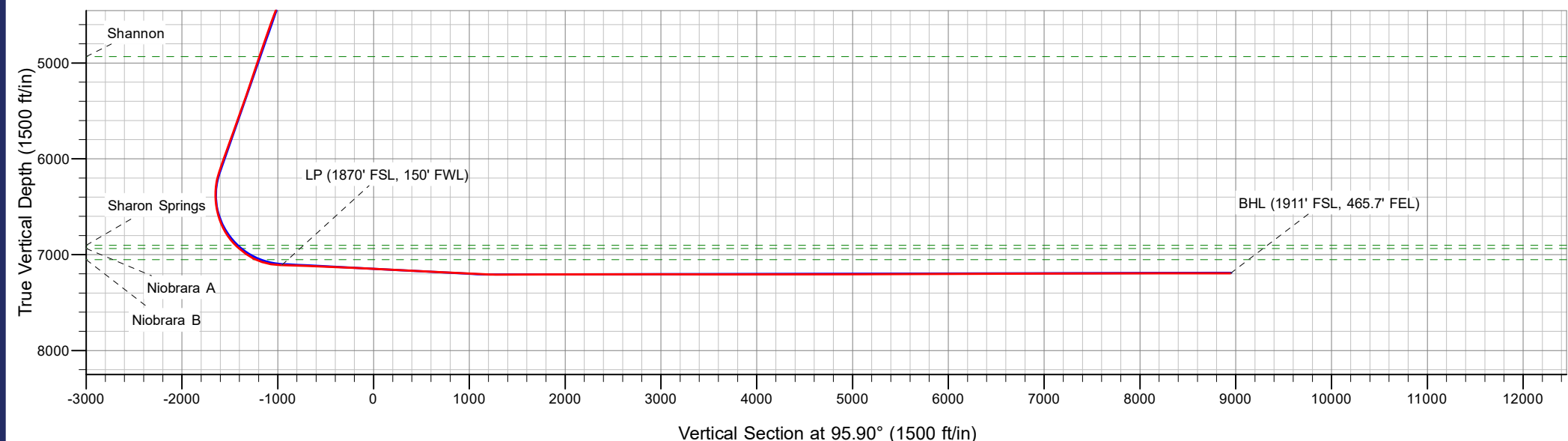
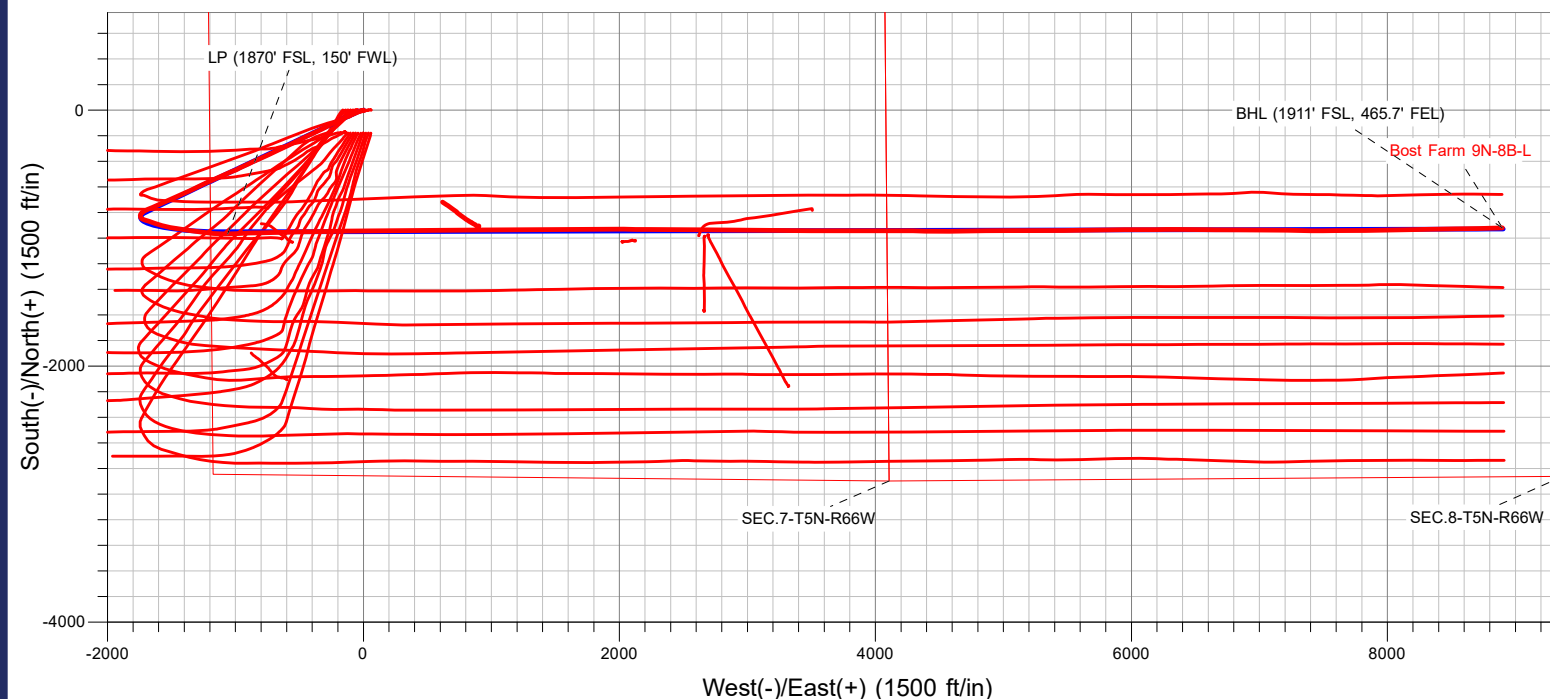
Bost Farms 5-7 Pad SEC.7-T5N-R66W
 Bost Farm 9N-8B-L
 9N-8B-L_Final Surveys
 13:22, May 16 2022



ANNOTATIONS

MD	TVD	Annotation
7861.4	7107.7	LP (1870' FSL, 150' FWL)
17824.0	7194.5	BHL (1911' FSL, 465.7' FEL)

FINAL SURVEY
Projected Bottom Hole Location
17824' MD / 7194.5' TVD
90.07° INC / 88.19° AZM
1911' FSL / 465.7' FEL



Company:	PDC Energy Inc. DJ Basin	Local Co-ordinate Reference:	Well Bost Farm 9N-8B-L
Project:	SEC.7-T5N-R66W	TVD Reference:	WELL @ 4902ft (Patterson 272 - RKB 28')
Site:	Bost Farms 5-7 Pad SEC.7-T5N-R66W	MD Reference:	WELL @ 4902ft (Patterson 272 - RKB 28')
Well:	Bost Farm 9N-8B-L	North Reference:	True
Wellbore:	Bost Farm 9N-8B-L Wellbore #1	Survey Calculation Method:	Minimum Curvature
Design:	9N-8B-L_Final Surveys	Database:	US_EDM

Project	SEC.7-T5N-R66W, Weld County, Co		
Map System:	US State Plane 1983	System Datum:	Mean Sea Level
Geo Datum:	North American Datum 1983		
Map Zone:	Colorado Northern Zone		Using geodetic scale factor

Site						Bost Farms 5-7 Pad SEC.7-T5N-R66W											
Site Position:						Northing:			1,394,603.55 usft			Latitude:			40.414641		
From:			Lat/Long			Easting:			3,187,178.01 usft			Longitude:			-104.827780		
Position Uncertainty:			0.0 ft			Slot Radius:			13-3/16 "			Grid Convergence:			0.43 °		

Well	Bost Farm 9N-8B-L					
Well Position	+N/-S	0.0 ft	Northing:	1,394,603.41 usfl	Latitude:	40.414642
	+E/-W	0.0 ft	Easting:	3,187,116.51 usfl	Longitude:	-104.828001
Position Uncertainty		0.0 ft	Wellhead Elevation:	ft	Ground Level:	4,874.0 ft

Wellbore	Bost Farm 9N-8B-L Wellbore #1				
Magnetics	Model Name	Sample Date	Declination (°)	Dip Angle (°)	Field Strength (nT)
	HRGM	05/05/2022	7.89	66.65	51,904.19930060

Design	9N-8B-L_Final Surveys				
Audit Notes:					
Version:	1.0	Phase:	ACTUAL	Tie On Depth:	0.0
Vertical Section:	Depth From (TVD) (ft)	+N/-S (ft)	+E/-W (ft)	Direction (°)	
	0.0	0.0	0.0	95.90	

Survey Program	Date	05/16/2022			
From (ft)	To (ft)	Survey (Wellbore)	Tool Name	Description	
161.5	17,824.0	Surface (Bost Farm 9N-8B-L Wellbore #1)	MWD	MWD - Standard	

Survey									
Measured Depth (ft)	Inclination (°)	Azimuth (°)	Vertical Depth (ft)	+N/-S (ft)	+E/-W (ft)	Vertical Section (ft)	Dogleg Rate (°/100usft)	Build Rate (°/100usft)	Turn Rate (°/100usft)
0.0	0.00	0.00	0.0	0.0	0.0	0.0	0.00	0.00	0.00
161.5	0.30	127.60	161.5	-0.3	0.3	0.4	0.19	0.19	0.00
252.5	0.40	124.50	252.5	-0.6	0.8	0.8	0.11	0.11	-3.41
344.5	0.20	104.60	344.5	-0.8	1.2	1.3	0.24	-0.22	-21.63
433.5	0.20	169.80	433.5	-1.0	1.4	1.5	0.24	0.00	73.26
522.5	0.00	0.00	522.5	-1.2	1.4	1.5	0.22	-0.22	0.00
612.5	0.50	234.20	612.5	-1.4	1.1	1.2	0.56	0.56	0.00
702.5	0.60	263.20	702.5	-1.7	0.3	0.5	0.32	0.11	32.22
787.5	0.60	276.10	787.5	-1.7	-0.6	-0.4	0.16	0.00	15.17
Fox Hills Aq Base									
791.5	0.60	276.70	791.5	-1.7	-0.6	-0.4	0.16	0.02	15.05

Company:	PDC Energy Inc. DJ Basin	Local Co-ordinate Reference:	Well Bost Farm 9N-8B-L
Project:	SEC.7-T5N-R66W	TVD Reference:	WELL @ 4902ft (Patterson 272 - RKB 28')
Site:	Bost Farms 5-7 Pad SEC.7-T5N-R66W	MD Reference:	WELL @ 4902ft (Patterson 272 - RKB 28')
Well:	Bost Farm 9N-8B-L	North Reference:	True
Wellbore:	Bost Farm 9N-8B-L Wellbore #1	Survey Calculation Method:	Minimum Curvature
Design:	9N-8B-L_Final Surveys	Database:	US_EDM

Survey									
Measured Depth (ft)	Inclination (°)	Azimuth (°)	Vertical Depth (ft)	+N/-S (ft)	+E/-W (ft)	Vertical Section (ft)	Dogleg Rate (°/100usft)	Build Rate (°/100usft)	Turn Rate (°/100usft)
880.5	0.70	288.30	880.5	-1.4	-1.6	-1.4	0.19	0.11	13.03
970.5	1.80	260.90	970.5	-1.5	-3.5	-3.3	1.36	1.22	-30.44
1,059.5	2.60	266.70	1,059.4	-1.8	-6.9	-6.7	0.93	0.90	6.52
1,149.5	4.30	255.20	1,149.2	-2.8	-12.2	-11.9	2.03	1.89	-12.78
1,238.5	6.10	253.00	1,237.9	-5.0	-20.0	-19.3	2.03	2.02	-2.47
1,328.5	8.40	249.60	1,327.1	-8.7	-30.7	-29.6	2.60	2.56	-3.78
1,417.5	10.30	247.70	1,414.9	-14.0	-44.2	-42.5	2.16	2.13	-2.13
1,506.5	11.40	243.50	1,502.4	-21.0	-59.4	-56.9	1.52	1.24	-4.72
1,608.5	13.10	244.90	1,602.0	-30.4	-78.9	-75.3	1.69	1.67	1.37
1,780.0	12.90	247.10	1,769.1	-46.1	-114.1	-108.8	0.31	-0.12	1.28
1,875.0	15.40	248.20	1,861.2	-54.9	-135.6	-129.2	2.65	2.63	1.16
1,970.0	18.58	245.05	1,952.1	-65.9	-161.0	-153.4	3.48	3.35	-3.32
2,064.0	18.85	245.39	2,041.1	-78.6	-188.4	-179.3	0.31	0.29	0.36
2,159.0	19.10	242.79	2,131.0	-92.1	-216.2	-205.6	0.93	0.26	-2.74
2,254.0	18.95	243.46	2,220.8	-106.1	-243.8	-231.6	0.28	-0.16	0.71
2,348.0	21.34	241.68	2,309.0	-121.0	-272.5	-258.6	2.62	2.54	-1.89
2,443.0	22.62	243.58	2,397.1	-137.3	-304.1	-288.4	1.54	1.35	2.00
2,537.0	22.78	243.53	2,483.8	-153.5	-336.6	-319.0	0.17	0.17	-0.05
2,726.0	23.02	244.17	2,657.9	-185.9	-402.6	-381.4	0.18	0.13	0.34
2,821.0	22.66	244.45	2,745.5	-201.9	-435.8	-412.8	0.40	-0.38	0.29
2,916.0	22.77	244.35	2,833.1	-217.8	-468.9	-444.0	0.12	0.12	-0.11
3,105.0	22.87	244.22	3,007.3	-249.6	-535.0	-506.5	0.06	0.05	-0.07
3,200.0	22.62	243.90	3,094.9	-265.6	-568.0	-537.7	0.29	-0.26	-0.34
3,295.0	22.60	244.47	3,182.6	-281.5	-600.9	-568.7	0.23	-0.02	0.60
3,485.0	22.16	244.70	3,358.3	-312.6	-666.2	-630.5	0.24	-0.23	0.12
3,674.0	22.30	244.76	3,533.3	-343.1	-730.9	-691.7	0.08	0.07	0.03
3,769.0	22.36	245.24	3,621.1	-358.4	-763.6	-722.7	0.20	0.06	0.51
3,899.4	23.02	245.88	3,741.5	-379.2	-809.4	-766.1	0.54	0.50	0.49
Parkman									
3,958.0	23.31	246.16	3,795.3	-388.5	-830.4	-786.1	0.54	0.50	0.47
4,052.0	22.51	242.96	3,881.9	-404.2	-863.5	-817.3	1.57	-0.85	-3.40
4,147.0	22.72	245.03	3,969.6	-420.2	-896.3	-848.3	0.87	0.22	2.18
4,336.0	22.81	245.54	4,143.9	-450.8	-962.7	-911.3	0.11	0.05	0.27
4,431.0	22.89	245.65	4,231.4	-466.1	-996.3	-943.1	0.10	0.08	0.12
4,492.8	22.34	246.04	4,288.5	-475.8	-1,018.0	-963.7	0.92	-0.88	0.63
Sussex									
4,526.0	22.05	246.26	4,319.2	-480.8	-1,029.5	-974.6	0.92	-0.88	0.66
4,715.0	22.46	246.71	4,494.1	-509.4	-1,095.1	-1,036.9	0.23	0.22	0.24
4,810.0	21.98	245.28	4,582.1	-524.0	-1,127.9	-1,068.1	0.76	-0.51	-1.51
5,000.0	22.47	246.95	4,758.0	-553.1	-1,193.7	-1,130.4	0.42	0.26	0.88
5,094.0	22.05	244.96	4,845.0	-567.6	-1,226.2	-1,161.3	0.92	-0.45	-2.12
5,188.2	21.24	243.11	4,932.5	-582.8	-1,257.4	-1,190.8	1.13	-0.86	-1.97
Shannon									

Company:	PDC Energy Inc. DJ Basin	Local Co-ordinate Reference:	Well Bost Farm 9N-8B-L
Project:	SEC.7-T5N-R66W	TVD Reference:	WELL @ 4902ft (Patterson 272 - RKB 28')
Site:	Bost Farms 5-7 Pad SEC.7-T5N-R66W	MD Reference:	WELL @ 4902ft (Patterson 272 - RKB 28')
Well:	Bost Farm 9N-8B-L	North Reference:	True
Wellbore:	Bost Farm 9N-8B-L Wellbore #1	Survey Calculation Method:	Minimum Curvature
Design:	9N-8B-L_Final Surveys	Database:	US_EDM

Survey

Measured Depth (ft)	Inclination (°)	Azimuth (°)	Vertical Depth (ft)	+N/-S (ft)	+E/-W (ft)	Vertical Section (ft)	Dogleg Rate (°/100usft)	Build Rate (°/100usft)	Turn Rate (°/100usft)
5,189.0	21.23	243.09	4,933.3	-582.9	-1,257.7	-1,191.0	1.13	-0.85	-2.04
5,378.0	21.31	245.25	5,109.4	-612.8	-1,319.4	-1,249.3	0.42	0.04	1.14
5,473.0	22.10	245.08	5,197.7	-627.6	-1,351.3	-1,279.5	0.83	0.83	-0.18
5,568.0	22.11	245.84	5,285.7	-642.4	-1,383.8	-1,310.4	0.30	0.01	0.80
5,757.0	22.35	246.25	5,460.6	-671.4	-1,449.1	-1,372.4	0.15	0.13	0.22
5,852.0	22.35	245.32	5,548.5	-686.3	-1,482.1	-1,403.6	0.37	0.00	-0.98
6,041.0	22.11	246.28	5,723.5	-715.6	-1,547.3	-1,465.5	0.23	-0.13	0.51
6,136.0	22.38	246.45	5,811.4	-730.0	-1,580.2	-1,496.8	0.29	0.28	0.18
6,231.0	22.30	246.14	5,899.3	-744.5	-1,613.3	-1,528.2	0.15	-0.08	-0.33
6,326.0	22.13	246.30	5,987.2	-759.0	-1,646.2	-1,559.4	0.19	-0.18	0.17
6,420.0	22.05	246.81	6,074.3	-773.0	-1,678.6	-1,590.2	0.22	-0.09	0.54
6,515.0	19.78	244.05	6,163.0	-787.1	-1,709.4	-1,619.4	2.60	-2.39	-2.91
6,610.0	16.13	220.89	6,253.5	-804.1	-1,732.6	-1,640.7	8.37	-3.84	-24.38
6,704.0	11.84	190.93	6,344.8	-823.5	-1,743.0	-1,649.0	8.81	-4.56	-31.87
6,799.0	8.02	151.32	6,438.5	-838.9	-1,741.6	-1,646.1	8.00	-4.02	-41.69
6,894.0	11.71	116.41	6,532.1	-849.0	-1,729.8	-1,633.3	7.23	3.88	-36.75
6,988.0	17.87	108.03	6,623.0	-857.8	-1,707.5	-1,610.2	6.92	6.55	-8.91
7,083.0	25.91	109.98	6,711.1	-869.4	-1,674.1	-1,575.8	8.50	8.46	2.05
7,177.0	34.81	109.09	6,792.1	-885.2	-1,629.3	-1,529.7	9.48	9.47	-0.95
7,272.0	41.67	105.04	6,866.7	-902.3	-1,573.2	-1,472.0	7.68	7.22	-4.26
7,321.4	45.34	102.40	6,902.5	-910.3	-1,540.1	-1,438.3	8.30	7.44	-5.35
Sharon Springs									
7,366.0	48.71	100.29	6,932.9	-916.7	-1,508.1	-1,405.8	8.30	7.54	-4.73
7,368.4	48.84	100.23	6,934.5	-917.1	-1,506.3	-1,404.0	5.59	5.31	-2.34
Niobrara A									
7,461.0	53.77	98.22	6,992.4	-928.6	-1,435.0	-1,331.9	5.59	5.33	-2.17
7,556.0	63.43	99.12	7,041.8	-940.8	-1,355.0	-1,251.0	10.20	10.17	0.95
7,578.6	65.71	98.60	7,051.5	-944.0	-1,334.8	-1,230.7	10.30	10.08	-2.32
Niobrara B									
7,650.0	72.92	97.05	7,076.7	-953.0	-1,268.7	-1,163.9	10.30	10.10	-2.17
7,745.0	80.90	94.97	7,098.2	-962.7	-1,176.7	-1,071.5	8.67	8.40	-2.19
7,840.0	88.34	90.59	7,107.1	-967.2	-1,082.3	-977.1	9.08	7.83	-4.61
7,861.4	88.33	89.81	7,107.7	-967.3	-1,061.0	-955.8	3.65	-0.06	-3.65
LP (1870' FSL, 150' FWL)									
7,934.0	88.29	87.16	7,109.9	-965.4	-988.4	-883.9	3.65	-0.05	-3.65
8,029.0	88.04	87.43	7,112.9	-960.9	-893.6	-790.0	0.39	-0.26	0.28
8,124.0	87.52	89.09	7,116.6	-958.0	-798.7	-695.9	1.83	-0.55	1.75
8,218.0	87.66	88.81	7,120.6	-956.3	-704.8	-602.7	0.33	0.15	-0.30
8,313.0	87.54	88.42	7,124.5	-954.0	-609.9	-508.5	0.43	-0.13	-0.41
8,408.0	87.47	89.03	7,128.7	-951.9	-515.0	-414.4	0.65	-0.07	0.64
8,502.0	87.62	88.37	7,132.7	-949.8	-421.1	-321.2	0.72	0.16	-0.70
8,597.0	87.87	89.07	7,136.4	-947.7	-326.2	-227.0	0.78	0.26	0.74
8,692.0	87.60	88.95	7,140.2	-946.0	-231.3	-132.8	0.31	-0.28	-0.13
8,787.0	86.94	89.98	7,144.7	-945.1	-136.4	-38.5	1.29	-0.69	1.08

Company:	PDC Energy Inc. DJ Basin	Local Co-ordinate Reference:	Well Bost Farm 9N-8B-L
Project:	SEC.7-T5N-R66W	TVD Reference:	WELL @ 4902ft (Patterson 272 - RKB 28')
Site:	Bost Farms 5-7 Pad SEC.7-T5N-R66W	MD Reference:	WELL @ 4902ft (Patterson 272 - RKB 28')
Well:	Bost Farm 9N-8B-L	North Reference:	True
Wellbore:	Bost Farm 9N-8B-L Wellbore #1	Survey Calculation Method:	Minimum Curvature
Design:	9N-8B-L_Final Surveys	Database:	US_EDM

Survey										
Measured Depth (ft)	Inclination (°)	Azimuth (°)	Vertical Depth (ft)	+N/-S (ft)	+E/-W (ft)	Vertical Section (ft)	Dogleg Rate (°/100usft)	Build Rate (°/100usft)	Turn Rate (°/100usft)	
8,881.0	87.14	89.47	7,149.6	-944.7	-42.6	54.8	0.58	0.21	-0.54	
8,976.0	86.92	90.02	7,154.5	-944.3	52.3	149.2	0.62	-0.23	0.58	
9,165.0	87.20	89.48	7,164.2	-943.4	241.1	336.8	0.32	0.15	-0.29	
9,260.0	87.45	89.19	7,168.6	-942.3	336.0	431.1	0.40	0.26	-0.31	
9,355.0	87.11	89.11	7,173.1	-940.9	430.8	525.3	0.37	-0.36	-0.08	
9,449.0	87.21	88.96	7,177.8	-939.4	524.7	618.5	0.19	0.11	-0.16	
9,544.0	87.21	89.21	7,182.4	-937.8	619.6	712.8	0.26	0.00	0.26	
9,639.0	87.06	90.41	7,187.2	-937.5	714.5	807.1	1.27	-0.16	1.26	
9,733.0	87.23	90.37	7,191.8	-938.2	808.3	900.5	0.19	0.18	-0.04	
9,827.0	87.06	89.28	7,196.5	-937.9	902.2	993.9	1.17	-0.18	-1.16	
9,921.0	87.03	89.27	7,201.4	-936.7	996.1	1,087.1	0.03	-0.03	-0.01	
10,016.0	87.75	89.28	7,205.7	-935.5	1,091.0	1,181.4	0.76	0.76	0.01	
10,110.0	89.78	89.07	7,207.7	-934.1	1,184.9	1,274.7	2.17	2.16	-0.22	
10,204.0	90.17	89.29	7,207.8	-932.8	1,278.9	1,368.1	0.48	0.41	0.23	
10,298.0	90.24	89.92	7,207.4	-932.1	1,372.9	1,461.5	0.67	0.07	0.67	
10,392.0	90.22	90.16	7,207.1	-932.2	1,466.9	1,555.0	0.26	-0.02	0.26	
10,486.0	90.15	90.00	7,206.7	-932.3	1,560.9	1,648.5	0.19	-0.07	-0.17	
10,580.0	90.27	89.58	7,206.4	-932.0	1,654.9	1,742.0	0.46	0.13	-0.45	
10,675.0	90.35	90.05	7,205.9	-931.7	1,749.9	1,836.5	0.50	0.08	0.49	
10,769.0	90.52	89.51	7,205.2	-931.3	1,843.9	1,929.9	0.60	0.18	-0.57	
10,863.0	90.16	89.73	7,204.6	-930.7	1,937.9	2,023.4	0.45	-0.38	0.23	
10,958.0	89.99	90.33	7,204.5	-930.7	2,032.9	2,117.9	0.66	-0.18	0.63	
11,053.0	89.97	89.99	7,204.5	-931.0	2,127.9	2,212.4	0.36	-0.02	-0.36	
11,147.0	89.88	90.87	7,204.7	-931.7	2,221.9	2,306.0	0.94	-0.10	0.94	
11,242.0	89.94	90.92	7,204.8	-933.2	2,316.9	2,400.6	0.08	0.06	0.05	
11,336.0	89.72	90.64	7,205.1	-934.5	2,410.9	2,494.2	0.38	-0.23	-0.30	
11,431.0	90.42	90.24	7,205.0	-935.2	2,505.9	2,588.8	0.85	0.74	-0.42	
11,525.0	90.49	90.18	7,204.2	-935.6	2,599.9	2,682.3	0.10	0.07	-0.06	
11,619.0	90.26	90.72	7,203.6	-936.3	2,693.9	2,775.9	0.62	-0.24	0.57	
11,713.0	90.07	89.88	7,203.3	-936.8	2,787.9	2,869.4	0.92	-0.20	-0.89	
11,808.0	90.04	89.75	7,203.2	-936.5	2,882.9	2,963.9	0.14	-0.03	-0.14	
11,902.0	89.55	90.86	7,203.6	-937.0	2,976.9	3,057.5	1.29	-0.52	1.18	
11,995.0	89.86	90.71	7,204.1	-938.3	3,069.9	3,150.1	0.37	0.33	-0.16	
12,090.0	89.70	91.07	7,204.4	-939.7	3,164.9	3,244.7	0.41	-0.17	0.38	
12,184.0	90.03	89.77	7,204.6	-940.4	3,258.8	3,338.3	1.43	0.35	-1.38	
12,279.0	89.87	90.96	7,204.7	-941.0	3,353.8	3,432.8	1.26	-0.17	1.25	
12,372.0	89.95	90.08	7,204.9	-941.9	3,446.8	3,525.4	0.95	0.09	-0.95	
12,465.0	90.11	89.73	7,204.8	-941.7	3,539.8	3,617.9	0.41	0.17	-0.38	
12,559.0	89.95	90.82	7,204.8	-942.2	3,633.8	3,711.5	1.17	-0.17	1.16	
12,654.0	90.15	89.76	7,204.7	-942.6	3,728.8	3,806.0	1.14	0.21	-1.12	
12,748.0	89.84	90.06	7,204.7	-942.5	3,822.8	3,899.5	0.46	-0.33	0.32	
12,842.0	89.97	90.37	7,204.9	-942.9	3,916.8	3,993.0	0.36	0.14	0.33	
12,936.0	90.06	89.69	7,204.8	-942.9	4,010.8	4,086.5	0.73	0.10	-0.72	
13,030.0	90.36	89.40	7,204.5	-942.2	4,104.8	4,180.0	0.44	0.32	-0.31	

Company:	PDC Energy Inc. DJ Basin	Local Co-ordinate Reference:	Well Bost Farm 9N-8B-L
Project:	SEC.7-T5N-R66W	TVD Reference:	WELL @ 4902ft (Patterson 272 - RKB 28')
Site:	Bost Farms 5-7 Pad SEC.7-T5N-R66W	MD Reference:	WELL @ 4902ft (Patterson 272 - RKB 28')
Well:	Bost Farm 9N-8B-L	North Reference:	True
Wellbore:	Bost Farm 9N-8B-L Wellbore #1	Survey Calculation Method:	Minimum Curvature
Design:	9N-8B-L_Final Surveys	Database:	US_EDM

Survey										
Measured Depth (ft)	Inclination (°)	Azimuth (°)	Vertical Depth (ft)	+N/-S (ft)	+E/-W (ft)	Vertical Section (ft)	Dogleg Rate (°/100usft)	Build Rate (°/100usft)	Turn Rate (°/100usft)	
13,125.0	89.94	90.09	7,204.2	-941.7	4,199.8	4,274.4	0.85	-0.44	0.73	
13,219.0	89.59	91.42	7,204.6	-943.0	4,293.8	4,368.0	1.46	-0.37	1.41	
13,313.0	90.01	91.25	7,204.9	-945.2	4,387.8	4,461.7	0.48	0.45	-0.18	
13,408.0	90.11	90.07	7,204.8	-946.3	4,482.8	4,556.3	1.25	0.11	-1.24	
13,502.0	90.24	90.05	7,204.6	-946.4	4,576.8	4,649.8	0.14	0.14	-0.02	
13,597.0	90.17	89.14	7,204.2	-945.7	4,671.8	4,744.3	0.96	-0.07	-0.96	
13,691.0	90.31	89.15	7,203.8	-944.3	4,765.8	4,837.6	0.15	0.15	0.01	
13,785.0	90.16	88.98	7,203.4	-942.7	4,859.8	4,930.9	0.24	-0.16	-0.18	
13,879.0	90.11	89.22	7,203.2	-941.3	4,953.7	5,024.3	0.26	-0.05	0.26	
13,974.0	90.18	89.59	7,203.0	-940.3	5,048.7	5,118.7	0.40	0.07	0.39	
14,068.0	89.94	90.53	7,202.9	-940.4	5,142.7	5,212.2	1.03	-0.26	1.00	
14,163.0	90.01	90.51	7,202.9	-941.2	5,237.7	5,306.8	0.08	0.07	-0.02	
14,258.0	90.12	89.46	7,202.8	-941.2	5,332.7	5,401.3	1.11	0.12	-1.11	
14,352.0	90.07	89.41	7,202.7	-940.3	5,426.7	5,494.7	0.08	-0.05	-0.05	
14,446.0	90.27	89.48	7,202.4	-939.4	5,520.7	5,588.1	0.23	0.21	0.07	
14,540.0	90.47	89.16	7,201.8	-938.3	5,614.7	5,681.4	0.40	0.21	-0.34	
14,635.0	90.01	89.40	7,201.4	-937.1	5,709.7	5,775.8	0.55	-0.48	0.25	
14,729.0	89.91	89.01	7,201.4	-935.8	5,803.7	5,869.2	0.43	-0.11	-0.41	
14,823.0	89.96	89.21	7,201.5	-934.3	5,897.7	5,962.5	0.22	0.05	0.21	
14,917.0	90.25	89.52	7,201.4	-933.3	5,991.7	6,055.9	0.45	0.31	0.33	
15,011.0	90.05	90.05	7,201.1	-932.9	6,085.7	6,149.3	0.60	-0.21	0.56	
15,105.0	90.33	89.81	7,200.8	-932.8	6,179.7	6,242.8	0.39	0.30	-0.26	
15,200.0	90.32	89.22	7,200.3	-932.0	6,274.7	6,337.2	0.62	-0.01	-0.62	
15,294.0	90.06	90.31	7,200.0	-931.6	6,368.7	6,430.7	1.19	-0.28	1.16	
15,482.0	90.15	90.76	7,199.6	-933.4	6,556.7	6,617.9	0.24	0.05	0.24	
15,576.0	90.21	90.23	7,199.3	-934.2	6,650.6	6,711.5	0.57	0.06	-0.56	
15,670.0	90.22	90.41	7,199.0	-934.7	6,744.6	6,805.0	0.19	0.01	0.19	
15,764.0	90.02	91.11	7,198.8	-935.9	6,838.6	6,898.6	0.77	-0.21	0.74	
15,858.0	90.33	90.00	7,198.5	-936.9	6,932.6	6,992.2	1.23	0.33	-1.18	
15,952.0	90.31	89.93	7,198.0	-936.8	7,026.6	7,085.7	0.08	-0.02	-0.07	
16,046.0	90.21	90.94	7,197.5	-937.5	7,120.6	7,179.3	1.08	-0.11	1.07	
16,234.0	90.37	90.92	7,196.6	-940.6	7,308.6	7,366.6	0.09	0.09	-0.01	
16,328.0	90.48	90.52	7,195.9	-941.7	7,402.6	7,460.2	0.44	0.12	-0.43	
16,423.0	90.50	89.77	7,195.1	-942.0	7,497.6	7,554.7	0.79	0.02	-0.79	
16,517.0	90.54	89.24	7,194.2	-941.2	7,591.6	7,648.1	0.57	0.04	-0.56	
16,611.0	90.36	89.89	7,193.5	-940.5	7,685.6	7,741.5	0.72	-0.19	0.69	
16,704.0	90.21	89.06	7,193.0	-939.6	7,778.6	7,834.0	0.91	-0.16	-0.89	
16,798.0	89.64	89.70	7,193.1	-938.6	7,872.6	7,927.3	0.91	-0.61	0.68	
16,893.0	89.70	89.15	7,193.7	-937.6	7,967.5	8,021.7	0.58	0.06	-0.58	
16,987.0	89.99	88.86	7,193.9	-936.0	8,061.5	8,115.1	0.44	0.31	-0.31	
17,081.0	89.73	89.38	7,194.2	-934.6	8,155.5	8,208.4	0.62	-0.28	0.55	
17,175.0	90.18	88.81	7,194.3	-933.1	8,249.5	8,301.7	0.77	0.48	-0.61	
17,270.0	90.33	88.62	7,193.8	-930.9	8,344.5	8,396.0	0.25	0.16	-0.20	

Company:	PDC Energy Inc. DJ Basin	Local Co-ordinate Reference:	Well Bost Farm 9N-8B-L
Project:	SEC.7-T5N-R66W	TVD Reference:	WELL @ 4902ft (Patterson 272 - RKB 28')
Site:	Bost Farms 5-7 Pad SEC.7-T5N-R66W	MD Reference:	WELL @ 4902ft (Patterson 272 - RKB 28')
Well:	Bost Farm 9N-8B-L	North Reference:	True
Wellbore:	Bost Farm 9N-8B-L Wellbore #1	Survey Calculation Method:	Minimum Curvature
Design:	9N-8B-L_Final Surveys	Database:	US_EDM

Survey										
Measured Depth (ft)	Inclination (°)	Azimuth (°)	Vertical Depth (ft)	+N/-S (ft)	+E/-W (ft)	Vertical Section (ft)	Dogleg Rate (°/100usft)	Build Rate (°/100usft)	Turn Rate (°/100usft)	
17,364.0	89.70	89.56	7,193.8	-929.5	8,438.5	8,489.3	1.20	-0.67	1.00	
17,458.0	89.97	88.29	7,194.1	-927.7	8,532.5	8,582.6	1.38	0.29	-1.35	
17,552.0	90.02	88.85	7,194.1	-925.3	8,626.4	8,675.8	0.60	0.05	0.60	
17,646.0	89.86	89.29	7,194.2	-923.8	8,720.4	8,769.2	0.50	-0.17	0.47	
17,741.0	89.79	88.98	7,194.5	-922.4	8,815.4	8,863.5	0.33	-0.07	-0.33	
17,793.0	90.07	88.19	7,194.5	-921.1	8,867.4	8,915.1	1.61	0.54	-1.52	
17,824.0	90.07	88.19	7,194.5	-920.1	8,898.4	8,945.8	0.00	0.00	0.00	
BHL (1911' FSL, 465.7' FEL)										

Formations						
Measured Depth (ft)	Vertical Depth (ft)	Name	Lithology	Dip (°)	Dip Direction (°)	
787.5	787.5	Fox Hills Aq Base				
3,899.4	3,741.5	Parkman				
4,492.8	4,288.5	Sussex				
5,188.2	4,932.5	Shannon				
7,321.4	6,902.5	Sharon Springs				
7,368.4	6,934.5	Niobrara A				
7,578.6	7,051.5	Niobrara B				

Survey Annotations					
Measured Depth (ft)	Vertical Depth (ft)	Local Coordinates		Comment	
		+N/-S (ft)	+E/-W (ft)		
7,861.4	7,107.7	-967.3	-1,061.0	LP (1870' FSL, 150' FWL)	
17,824.0	7,194.5	-920.1	8,898.4	BHL (1911' FSL, 465.7' FEL)	