

Cement Post Job Report

Client: PDC Energy

Well Name: Bost Farm 9N-8B-L

API #: 05-123-51454-00

Job Date: May 11, 2022

Job Type: New Well - 5.5" Production String

Cement Company & Contact: EXERO Well Integrity -
Cheve Meyer 720-239-3819



ROCK SOLID
WELL INTEGRITY
SOLUTIONS

TREATMENT REPORT

Client	Well	Rig		Date		Job Type		
PDC Energy	Bost Farm 9N-8B-L	Patterson 272		5/11/2022		Production		
Connection Type	Thread Type	Number of Stages		BHST Deg		BHCT Deg		
5 1/2" Cement Head	Buttress	1		255		195		
Well MD (ft)	Well TVD (ft)	Deg Dev.		Max-Cas/DP PSI		Max Ann. PSI		
17824	7195	90		8000		2000		
Packer/Retainer/CIBP/DV Tool Depths		Top of Perfs		Bottom of Perfs		Number of Holes		
2965.88		na		na		na		
String	Casing/Tubing Type	OD	Wt/ft	ID	OH Size	% XS Lead	% XS Tail	Depth (ft)
Surface	Casing	9.625	36					1658
Production	Casing	5.5	20	4.778	8.5	0	0	17816

PRE-JOB MUD AND WELL CONDITIONS

Mud Type	OBM	Pipe Rotation		Circulation Data				Water Requirements (bbls)	
Mud wt. ppg	10.5	Rotate Y,N	No	Circulate Time (hrs)	3			Spacers	140
Flow Temp	115	Rate		Circulation Rate (bpm)	11			Stage 1 Lead	118
Vis. Sec/qt	43	Torque Val.		Full Circ?	Full			Stage 1 Tail	241
PV (cP)	17	Time		Gas Present (Y,N)		Units		Stage 2 Lead	0
Yield Pt	8	Pipe Reciprocation		Centralizers/Plugs				Stage 2 Tail	0
10 sec gel	4	Recip Y,N	No	Quantity & Type				Displacement	395
10 min gel	6	Stroke (ft)		Top Plug/Type	5.5 latch down			Wash up	20
30 min gel	8	Recip time		Bottom Plug/Type/Burst p	5.5 latch down			Total + 10% Safety	1006

PRE-JOB CALCULATED MATERIALS, VOLUMES, & RATES

Prelflush & Spacers		Stage 1 Lead: Class G		Stage 1 Tail: Class G		Stage 2 Lead: NA		Stage 2 Tail: NA		Displacement	
Spacer 1	Spacer	Density	12.9	Density	13.7	Density		Density		Fluid Type	Water
Density	12	Sacks	1276	Sacks	1528	Sacks		Sacks		Dens. ppg	8.33
Volume	140	Vol/bbls	256.8	Vol/bbls	372.8	Vol/bbls	0.0	Vol/bbls	0.0	Vol. bbl	390
Rate	10	Rate	11	Rate	11	Rate		Rate		Rate bpm	10
Spacer 2	ChemWash	Yield	1.13	Yield	1.37	Yield		Yield		Clay Stay?	No
Density		Gal/Sk	3.90	Gal/Sk	6.63	Gal/Sk		Gal/Sk		Biocide ?	Yes
Volume		% Excess	0	% Excess	0	% Excess		% Excess		Slow @ bbl	370
Rate		TOL (ft)	2378	TOT (ft)	8677	TOL (ft)		TOT (ft)		Bump PSI	2400

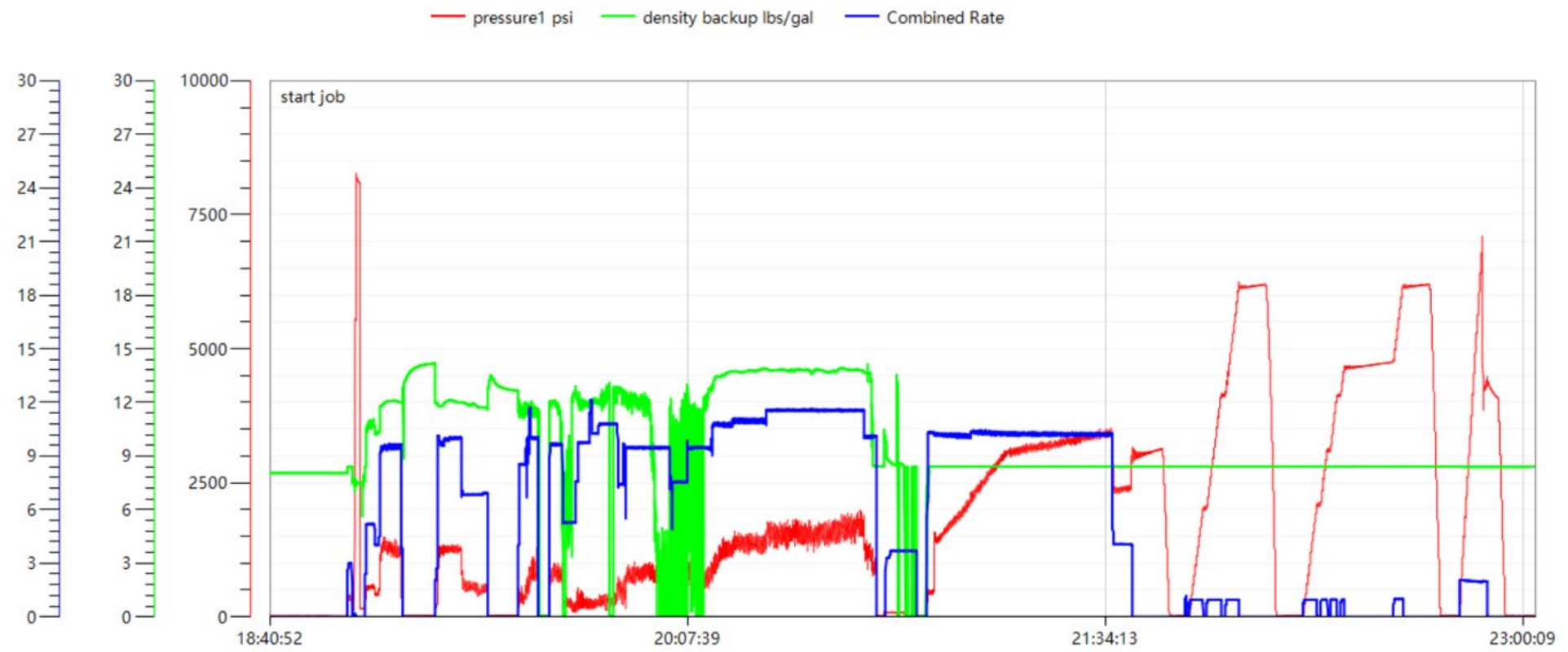
POST JOB DETAILS, FINAL VOLUMES & PRESSURES

Final Displacement (bbls)	395	Top out cement type	
Bump Plug?	Yes	Density	
Final Bump Pressure (psi)	2900	Sack Quantity	
Full Returns throughout job?	Full	Mix water requirement (gal/sk)	
Vol away/Time when returns lost		Yield	
Vol away/Time When returns regained		Summary of Additives Used on Job	
Spacer to Surface?	yes	Surfactants (gal)	238
Spacer volume returned	45	Clay Stabilizer (gal)	0
Cement to surface?	no	Biocide (gal)	20
Cement volume to surface stage 1 (bbls)	Stg 2	Corrosion Inhibitor (gal)	0
Surface top out?		Defoamer (gal)	60
Top out volume pumped (bbls)		PhenoSeal (LCM lbs)	0
		Fiber (LCM lbs)	290

Job Treatment Log

Client				Well			Exero Supervisor
PDC Energy				Bost Farm 9N-8B-L			Jim Asire 307-247-1064
Ambient Conditions (Temperature / Humidity / Air Pressure)							81 Deg F / 14 % / 24.72 in
Date DD/MM	Time HH:MM	Density (ppg)	Rate (bpm)	Vol. (bbl)	Total Vol. (bbl)	Pressure (psi)	Treatment Comments
5/11/22	3:00 PM				0.0		Arrive on location and meet with customer to get well information and discuss the job
	3:15 PM				0.0		Spot equipment and rig up
	4:00 PM				0.0		Wait for rig to circulate well to condition
	6:20 PM				0.0		Safety meeting with rig crew
	6:40 PM				0.0		Rig up the floor
	6:45 PM				0.0		Drop bottom plug 1
	6:50 PM	8.33	3.00	3.0	3.0	250	Fill lines
	6:52 PM				0.0	8000	Test lines
	6:54 PM	12.00	9.00	140.0	140.0	1000	Mix and pump spacer@ 12.0# with surfactants and fiber
	7:21 PM				0.0		Drop bottom plug 2
	7:25 PM	12.90	10.00	257.0	257.0	1000	Mix and pump 1276 sks Lead @ 12.9# , 1.13 cuft/sk and 3.90 gals/sk , Top of Lead @ 2378'
	8:05 PM	13.70	11.00	373.0	373.0	1500	Mix and pump 1528 sks Tail @ 13.7# , 1.37 cuft/sk and 6.63 gals/sk , Top of Tail @ 8677'
	8:38 PM	8.33	11.00	8.0	8.0	1500	Pump sugar water
	8:40 PM				0.0		Shut down and wash pumps and lines
	8:47 PM				0.0		Drop top plug
	8:50 PM	8.33	10.00	0.0	0.0	1400	Start water displacement , sugar in the first 10 and biocide in all
	8:56 PM	8.33	10.00	50.0	50.0	1700	Water displacement
	9:01 PM	8.33	10.00	100.0	100.0	2400	Water displacement
	9:06 PM	8.33	10.00	150.0	150.0	3000	Water displacement
	9:11 PM	8.33	10.00	200.0	200.0	3100	Water displacement
	9:16 PM	8.33	10.00	250.0	250.0	3200	Water displacement
	9:21 PM	8.33	10.00	300.0	300.0	3300	Water displacement
	9:27 PM	8.33	10.00	350.0	350.0	3400	Water displacement , spacer to surface @ 350 away , 45 bbls back
	9:33 PM	8.33	4.00	395.0	395.0	2400	Land plug and bumped it to 2900 psi
	9:39 PM				0.0		Check floats , floats held 4 bbls back
	9:43 PM				0.0		Set packer per toll hand
	10:40 PM	8.33		2.0	2.0		Shift sleeve and pump wet shoe
	11:00 PM				0.0		Flush BOP's
	11:15 PM				0.0		Rig down
	11:50 PM				0.0		Depart location

Bost Farm 9N-8B-L Pump Chart – Pressure / Rate / Density





Centralizer Depths

Well Name: Bost Farm 9N-8B-L

Production, Set Depth: 17,816.0ftKB

API 05123514540000		Surface Legal Location SWNW 7 5N 66W		Field Name Wattenberg		State CO		Well Configuration Type Horizontal					
Ground Elevation (ft) 4,874.00		Original KB Elevation (ft) 4,902.00		KB-Ground Distance (ft) 28.00		Spud Date 5/7/2022 23:30		Rig Release Date 5/12/2022 02:00		On Production Date		Abandon Date	

Casing Run Tally

Run #	Ref #	Item Des	OD (in)	Wt (lb/ft)	Grade	Run?	Len (ft)	Centralized?	Ext Jwlry	Connections	Top (ftKB)	Cum Len (ft)
7	1	Casing Joints	5 1/2	20.00	P-110	Yes	47.18	Yes			17,730.4	85.57
9	3	Casing Joints	5 1/2	20.00	P-110	Yes	47.21	Yes			17,636.2	179.83
11	5	Casing Joints	5 1/2	20.00	P-110	Yes	46.10	Yes			17,542.9	273.13
13	7	Casing Joints	5 1/2	20.00	P-110	Yes	46.80	Yes			17,449.3	366.68
15	9	Casing Joints	5 1/2	20.00	P-110	Yes	47.05	Yes			17,364.5	451.53
17		Marker A	5 1/2	20.00	P-110	Yes	11.78	Yes			17,305.5	510.46
19	12	Casing Joints	5 1/2	20.00	P-110	Yes	46.55	Yes			17,212.3	603.75
21	14	Casing Joints	5 1/2	20.00	P-110	Yes	43.00	Yes			17,122.5	693.50
23	16	Casing Joints	5 1/2	20.00	P-110	Yes	47.21	Yes			17,028.6	787.41
25	18	Casing Joints	5 1/2	20.00	P-110	Yes	47.05	Yes			16,934.4	881.56
27	20	Casing Joints	5 1/2	20.00	P-110	Yes	47.21	Yes			16,840.1	975.87
29	22	Casing Joints	5 1/2	20.00	P-110	Yes	45.50	Yes			16,749.2	1,066.77
31	24	Casing Joints	5 1/2	20.00	P-110	Yes	43.40	Yes			16,658.8	1,157.23
33	26	Casing Joints	5 1/2	20.00	P-110	Yes	47.20	Yes			16,564.5	1,251.53
35	28	Casing Joints	5 1/2	20.00	P-110	Yes	45.60	Yes			16,471.8	1,344.17
37	30	Casing Joints	5 1/2	20.00	P-110	Yes	47.15	Yes			16,377.6	1,438.37
39	32	Casing Joints	5 1/2	20.00	P-110	Yes	47.06	Yes			16,285.3	1,530.73
41	34	Casing Joints	5 1/2	20.00	P-110	Yes	47.15	Yes			16,199.4	1,616.63
43	36	Casing Joints	5 1/2	20.00	P-110	Yes	47.05	Yes			16,105.2	1,710.78
45	38	Casing Joints	5 1/2	20.00	P-110	Yes	47.15	Yes			16,011.0	1,804.97
47	40	Casing Joints	5 1/2	20.00	P-110	Yes	47.15	Yes			15,916.8	1,899.17
49	42	Casing Joints	5 1/2	20.00	P-110	Yes	47.04	Yes			15,823.0	1,993.01
51	44	Casing Joints	5 1/2	20.00	P-110	Yes	47.06	Yes			15,728.9	2,087.12
53	46	Casing Joints	5 1/2	20.00	P-110	Yes	47.15	Yes			15,634.7	2,181.32
55	48	Casing Joints	5 1/2	20.00	P-110	Yes	47.05	Yes			15,540.5	2,275.51
57	50	Casing Joints	5 1/2	20.00	P-110	Yes	47.35	Yes			15,445.9	2,370.06
59	52	Casing Joints	5 1/2	20.00	P-110	Yes	47.04	Yes			15,351.9	2,464.15
61	54	Casing Joints	5 1/2	20.00	P-110	Yes	47.05	Yes			15,257.7	2,558.30
63	56	Casing Joints	5 1/2	20.00	P-110	Yes	47.10	Yes			15,163.5	2,652.53
65	58	Casing Joints	5 1/2	20.00	P-110	Yes	47.10	Yes			15,069.2	2,746.77
67	60	Casing Joints	5 1/2	20.00	P-110	Yes	47.05	Yes			14,979.3	2,836.72



Centralizer Depths

Well Name: Bost Farm 9N-8B-L

Production, Set Depth: 17,816.0ftKB

API 05123514540000		Surface Legal Location SWNW 7 5N 66W		Field Name Wattenberg		State CO		Well Configuration Type Horizontal	
Ground Elevation (ft) 4,874.00		Original KB Elevation (ft) 4,902.00		KB-Ground Distance (ft) 28.00		Spud Date 5/7/2022 23:30		Rig Release Date 5/12/2022 02:00	
						On Production Date		Abandon Date	

Casing Run Tally

Run #	Ref #	Item Des	OD (in)	Wt (lb/ft)	Grade	Run?	Len (ft)	Centralized?	Ext Jw/ry	Connections	Top (ftKB)	Cum Len (ft)
69	62	Casing Joints	5 1/2	20.00	P-110	Yes	47.06	Yes			14,885.2	2,930.83
71	64	Casing Joints	5 1/2	20.00	P-110	Yes	45.80	Yes			14,792.2	3,023.83
73	66	Casing Joints	5 1/2	20.00	P-110	Yes	47.05	Yes			14,698.0	3,117.96
75	68	Casing Joints	5 1/2	20.00	P-110	Yes	47.06	Yes			14,605.8	3,210.23
77	70	Casing Joints	5 1/2	20.00	P-110	Yes	47.05	Yes			14,511.7	3,304.32
79	72	Casing Joints	5 1/2	20.00	P-110	Yes	47.02	Yes			14,417.5	3,398.49
81	74	Casing Joints	5 1/2	20.00	P-110	Yes	47.15	Yes			14,323.4	3,492.64
83	76	Casing Joints	5 1/2	20.00	P-110	Yes	47.21	Yes			14,229.1	3,586.89
85	78	Casing Joints	5 1/2	20.00	P-110	Yes	47.10	Yes			14,135.4	3,680.64
87	80	Casing Joints	5 1/2	20.00	P-110	Yes	43.85	Yes			14,044.4	3,771.64
89	82	Casing Joints	5 1/2	20.00	P-110	Yes	47.10	Yes			13,950.1	3,865.94
91	84	Casing Joints	5 1/2	20.00	P-110	Yes	47.15	Yes			13,855.8	3,960.24
93	86	Casing Joints	5 1/2	20.00	P-110	Yes	47.10	Yes			13,761.6	4,054.39
95	88	Casing Joints	5 1/2	20.00	P-110	Yes	46.15	Yes			13,668.4	4,147.58
97	90	Casing Joints	5 1/2	20.00	P-110	Yes	47.10	Yes			13,574.1	4,241.87
99	92	Casing Joints	5 1/2	20.00	P-110	Yes	46.80	Yes			13,480.7	4,335.32
101	94	Casing Joints	5 1/2	20.00	P-110	Yes	46.81	Yes			13,388.0	4,427.98
103	96	Casing Joints	5 1/2	20.00	P-110	Yes	45.75	Yes			13,296.4	4,519.63
105	98	Casing Joints	5 1/2	20.00	P-110	Yes	46.70	Yes			13,202.9	4,613.13
107	100	Casing Joints	5 1/2	20.00	P-110	Yes	46.75	Yes			13,109.3	4,706.69
109	102	Casing Joints	5 1/2	20.00	P-110	Yes	46.75	Yes			13,016.7	4,799.34
111	104	Casing Joints	5 1/2	20.00	P-110	Yes	46.79	Yes			12,922.8	4,893.17
113		Marker Joint	5 1/2	20.00	P-110	Yes	11.80	Yes			12,864.2	4,951.77
114	106	Casing Joints	5 1/2	20.00	P-110	Yes	45.71	Yes			12,818.5	4,997.48
116	108	Casing Joints	5 1/2	20.00	P-110	Yes	46.82	Yes			12,726.4	5,089.60
118	110	Casing Joints	5 1/2	20.00	P-110	Yes	45.40	Yes			12,635.3	5,180.70
120	112	Casing Joints	5 1/2	20.00	P-110	Yes	45.85	Yes			12,542.6	5,273.39
122	114	Casing Joints	5 1/2	20.00	P-110	Yes	46.84	Yes			12,449.0	5,367.03
124	116	Casing Joints	5 1/2	20.00	P-110	Yes	46.81	Yes			12,357.4	5,458.56
126	118	Casing Joints	5 1/2	20.00	P-110	Yes	45.71	Yes			12,264.9	5,551.07
128	120	Casing Joints	5 1/2	20.00	P-110	Yes	46.75	Yes			12,171.4	5,644.62



Centralizer Depths

Well Name: Bost Farm 9N-8B-L

Production, Set Depth: 17,816.0ftKB

API 05123514540000		Surface Legal Location SWNW 7 5N 66W		Field Name Wattenberg		State CO		Well Configuration Type Horizontal					
Ground Elevation (ft) 4,874.00		Original KB Elevation (ft) 4,902.00		KB-Ground Distance (ft) 28.00		Spud Date 5/7/2022 23:30		Rig Release Date 5/12/2022 02:00		On Production Date		Abandon Date	

Casing Run Tally

Run #	Ref #	Item Des	OD (in)	Wt (lb/ft)	Grade	Run?	Len (ft)	Centralized?	Ext Jwlry	Connections	Top (ftKB)	Cum Len (ft)
130	122	Casing Joints	5 1/2	20.00	P-110	Yes	46.71	Yes			12,077.9	5,738.13
132	124	Casing Joints	5 1/2	20.00	P-110	Yes	46.83	Yes			11,991.2	5,824.76
134	126	Casing Joints	5 1/2	20.00	P-110	Yes	43.90	Yes			11,900.5	5,915.48
137	129	Casing Joints	5 1/2	20.00	P-110	Yes	42.90	Yes			11,764.1	6,051.89
139	131	Casing Joints	5 1/2	20.00	P-110	Yes	46.70	Yes			11,670.7	6,145.34
141	133	Casing Joints	5 1/2	20.00	P-110	Yes	46.71	Yes			11,577.3	6,238.70
143	135	Casing Joints	5 1/2	20.00	P-110	Yes	46.82	Yes			11,483.7	6,332.32
145	137	Casing Joints	5 1/2	20.00	P-110	Yes	44.91	Yes			11,392.1	6,423.95
147	139	Casing Joints	5 1/2	20.00	P-110	Yes	45.45	Yes			11,301.7	6,514.30
149	141	Casing Joints	5 1/2	20.00	P-110	Yes	46.75	Yes			11,209.3	6,606.70
151	143	Casing Joints	5 1/2	20.00	P-110	Yes	47.01	Yes			11,115.4	6,700.62
153	145	Casing Joints	5 1/2	20.00	P-110	Yes	46.71	Yes			11,022.0	6,793.98
155	147	Casing Joints	5 1/2	20.00	P-110	Yes	47.10	Yes			10,928.0	6,888.03
157	149	Casing Joints	5 1/2	20.00	P-110	Yes	46.80	Yes			10,834.5	6,981.55
159	151	Casing Joints	5 1/2	20.00	P-110	Yes	47.30	Yes			10,740.2	7,075.76
161	153	Casing Joints	5 1/2	20.00	P-110	Yes	47.44	Yes			10,645.5	7,170.52
163	155	Casing Joints	5 1/2	20.00	P-110	Yes	46.91	Yes			10,551.2	7,264.78
165	157	Casing Joints	5 1/2	20.00	P-110	Yes	47.31	Yes			10,456.6	7,359.41
167	159	Casing Joints	5 1/2	20.00	P-110	Yes	47.30	Yes			10,362.1	7,453.91
169	161	Casing Joints	5 1/2	20.00	P-110	Yes	47.34	Yes			10,267.9	7,548.15
171	163	Casing Joints	5 1/2	20.00	P-110	Yes	47.31	Yes			10,173.3	7,642.68
173	165	Casing Joints	5 1/2	20.00	P-110	Yes	47.31	Yes			10,078.7	7,737.31
175	167	Casing Joints	5 1/2	20.00	P-110	Yes	47.34	Yes			9,984.1	7,831.95
177	169	Casing Joints	5 1/2	20.00	P-110	Yes	47.34	Yes			9,890.6	7,925.44
179	171	Casing Joints	5 1/2	20.00	P-110	Yes	47.31	Yes			9,795.9	8,020.10
181	173	Casing Joints	5 1/2	20.00	P-110	Yes	43.25	Yes			9,711.8	8,104.23
183	175	Casing Joints	5 1/2	20.00	P-110	Yes	38.15	Yes			9,628.3	8,187.69
185	177	Casing Joints	5 1/2	20.00	P-110	Yes	43.25	Yes			9,537.8	8,278.18
187	179	Casing Joints	5 1/2	20.00	P-110	Yes	46.95	Yes			9,443.6	8,372.45
189	181	Casing Joints	5 1/2	20.00	P-110	Yes	47.10	Yes			9,353.1	8,462.90
191	183	Casing Joints	5 1/2	20.00	P-110	Yes	47.40	Yes			9,259.1	8,556.95



Centralizer Depths

Well Name: Bost Farm 9N-8B-L

Production, Set Depth: 17,816.0ftKB

API 05123514540000		Surface Legal Location SWNW 7 5N 66W		Field Name Wattenberg		State CO		Well Configuration Type Horizontal	
Ground Elevation (ft) 4,874.00	Original KB Elevation (ft) 4,902.00	KB-Ground Distance (ft) 28.00		Spud Date 5/7/2022 23:30		Rig Release Date 5/12/2022 02:00		On Production Date	Abandon Date

Casing Run Tally

Run #	Ref #	Item Des	OD (in)	Wt (lb/ft)	Grade	Run?	Len (ft)	Centralized?	Ext Jw/ry	Connections	Top (ftKB)	Cum Len (ft)
193	185	Casing Joints	5 1/2	20.00	P-110	Yes	47.32	Yes			9,164.4	8,651.62
195	187	Casing Joints	5 1/2	20.00	P-110	Yes	42.10	Yes			9,075.5	8,740.52
197	189	Casing Joints	5 1/2	20.00	P-110	Yes	47.10	Yes			8,981.7	8,834.26
199	191	Casing Joints	5 1/2	20.00	P-110	Yes	46.91	Yes			8,889.2	8,926.82
201	193	Casing Joints	5 1/2	20.00	P-110	Yes	46.81	Yes			8,795.5	9,020.53
203	195	Casing Joints	5 1/2	20.00	P-110	Yes	44.38	Yes			8,706.1	9,109.86
205	197	Casing Joints	5 1/2	20.00	P-110	Yes	42.50	Yes			8,616.8	9,199.16
207	199	Casing Joints	5 1/2	20.00	P-110	Yes	46.91	Yes			8,523.1	9,292.87
209	201	Casing Joints	5 1/2	20.00	P-110	Yes	46.80	Yes			8,429.4	9,386.59
211	203	Casing Joints	5 1/2	20.00	P-110	Yes	46.70	Yes			8,336.0	9,480.00
213	205	Casing Joints	5 1/2	20.00	P-110	Yes	46.90	Yes			8,242.3	9,573.75
215	207	Casing Joints	5 1/2	20.00	P-110	Yes	46.94	Yes			8,148.5	9,667.49
217	209	Casing Joints	5 1/2	20.00	P-110	Yes	46.70	Yes			8,054.8	9,761.24
219	211	Casing Joints	5 1/2	20.00	P-110	Yes	46.75	Yes			7,961.2	9,854.81
221	213	Casing Joints	5 1/2	20.00	P-110	Yes	47.05	Yes			7,867.2	9,948.81
222		Marker Joint C	5 1/2	20.00	P-110	Yes	11.80	Yes			7,855.4	9,960.61
223	214	Casing Joints	5 1/2	20.00	P-110	Yes	46.58	Yes			7,808.8	10,007.19
224	215	Casing Joints	5 1/2	20.00	P-110	Yes	45.05	Yes			7,763.8	10,052.24
225	216	Casing Joints	5 1/2	20.00	P-110	Yes	45.85	Yes			7,717.9	10,098.09
226	217	Casing Joints	5 1/2	20.00	P-110	Yes	45.64	Yes			7,672.3	10,143.73
227	218	Casing Joints	5 1/2	20.00	P-110	Yes	45.65	Yes			7,626.6	10,189.38
228	219	Casing Joints	5 1/2	20.00	P-110	Yes	47.10	Yes			7,579.5	10,236.48
229	220	Casing Joints	5 1/2	20.00	P-110	Yes	46.68	Yes			7,532.8	10,283.16
230	221	Casing Joints	5 1/2	20.00	P-110	Yes	46.91	Yes			7,485.9	10,330.07
231	222	Casing Joints	5 1/2	20.00	P-110	Yes	47.00	Yes			7,438.9	10,377.07
232	223	Casing Joints	5 1/2	20.00	P-110	Yes	46.91	Yes			7,392.0	10,423.98
233	224	Casing Joints	5 1/2	20.00	P-110	Yes	46.60	Yes			7,345.4	10,470.58
234	225	Casing Joints	5 1/2	20.00	P-110	Yes	47.05	Yes			7,298.4	10,517.63
235	226	Casing Joints	5 1/2	20.00	P-110	Yes	46.92	Yes			7,251.5	10,564.55
236	227	Casing Joints	5 1/2	20.00	P-110	Yes	46.91	Yes			7,204.5	10,611.46
237	228	Casing Joints	5 1/2	20.00	P-110	Yes	46.75	Yes			7,157.8	10,658.21



Centralizer Depths

Well Name: Bost Farm 9N-8B-L

Production, Set Depth: 17,816.0ftKB

API 05123514540000		Surface Legal Location SWNW 7 5N 66W		Field Name Wattenberg		State CO		Well Configuration Type Horizontal	
Ground Elevation (ft) 4,874.00	Original KB 4,902.00	Elevation (ft) 28.00	KB-Ground Distance (ft) 28.00	Spud Date 5/7/2022 23:30	Rig Release Date 5/12/2022 02:00	On Production Date		Abandon Date	

Casing Run Tally

Run #	Ref #	Item Des	OD (in)	Wt (lb/ft)	Grade	Run?	Len (ft)	Centralized?	Ext Jw/ry	Connections	Top (ftKB)	Cum Len (ft)
238	229	Casing Joints	5 1/2	20.00	P-110	Yes	47.10	Yes			7,110.7	10,705.31
239	230	Casing Joints	5 1/2	20.00	P-110	Yes	45.65	Yes			7,065.0	10,750.96
240	231	Casing Joints	5 1/2	20.00	P-110	Yes	46.99	Yes			7,018.1	10,797.95
241	232	Casing Joints	5 1/2	20.00	P-110	Yes	46.78	Yes			6,971.3	10,844.73
242	233	Casing Joints	5 1/2	20.00	P-110	Yes	47.31	Yes			6,924.0	10,892.04
243	234	Casing Joints	5 1/2	20.00	P-110	Yes	47.35	Yes			6,876.6	10,939.39
244	235	Casing Joints	5 1/2	20.00	P-110	Yes	47.31	Yes			6,829.3	10,986.70
245	236	Casing Joints	5 1/2	20.00	P-110	Yes	46.65	Yes			6,782.7	11,033.35
246	237	Casing Joints	5 1/2	20.00	P-110	Yes	47.20	Yes			6,735.5	11,080.55
247	238	Casing Joints	5 1/2	20.00	P-110	Yes	46.75	Yes			6,688.7	11,127.30
248	239	Casing Joints	5 1/2	20.00	P-110	Yes	46.71	Yes			6,642.0	11,174.01
249	240	Casing Joints	5 1/2	20.00	P-110	Yes	45.72	Yes			6,596.3	11,219.73
250	241	Casing Joints	5 1/2	20.00	P-110	Yes	47.05	Yes			6,549.2	11,266.78
251		Marker Joint G	5 1/2	20.00	P-110	Yes	22.50	Yes			6,526.7	11,289.28
252	242	Casing Joints	5 1/2	20.00	P-110	Yes	47.04	Yes			6,479.7	11,336.32
253	243	Casing Joints	5 1/2	20.00	P-110	Yes	47.20	Yes			6,432.5	11,383.52
254	244	Casing Joints	5 1/2	20.00	P-110	Yes	45.25	Yes			6,387.2	11,428.77
255	245	Casing Joints	5 1/2	20.00	P-110	Yes	47.18	Yes			6,340.1	11,475.95
256	246	Casing Joints	5 1/2	20.00	P-110	Yes	46.70	Yes			6,293.4	11,522.65
257	247	Casing Joints	5 1/2	20.00	P-110	Yes	46.78	Yes			6,246.6	11,569.43
258	248	Casing Joints	5 1/2	20.00	P-110	Yes	46.80	Yes			6,199.8	11,616.23
259	249	Casing Joints	5 1/2	20.00	P-110	Yes	45.10	Yes			6,154.7	11,661.33
260	250	Casing Joints	5 1/2	20.00	P-110	Yes	47.15	Yes			6,107.5	11,708.48
261	251	Casing Joints	5 1/2	20.00	P-110	Yes	46.72	Yes			6,060.8	11,755.20
262	252	Casing Joints	5 1/2	20.00	P-110	Yes	46.71	Yes			6,014.1	11,801.91
263	253	Casing Joints	5 1/2	20.00	P-110	Yes	46.60	Yes			5,967.5	11,848.51
264	254	Casing Joints	5 1/2	20.00	P-110	Yes	46.80	Yes			5,920.7	11,895.31
265	255	Casing Joints	5 1/2	20.00	P-110	Yes	46.75	Yes			5,873.9	11,942.06
266	256	Casing Joints	5 1/2	20.00	P-110	Yes	46.81	Yes			5,827.1	11,988.87
267	257	Casing Joints	5 1/2	20.00	P-110	Yes	46.74	Yes			5,780.4	12,035.61
268	258	Casing Joints	5 1/2	20.00	P-110	Yes	46.70	Yes			5,733.7	12,082.31



Centralizer Depths

Well Name: Bost Farm 9N-8B-L

Production, Set Depth: 17,816.0ftKB

API 05123514540000		Surface Legal Location SWNW 7 5N 66W		Field Name Wattenberg		State CO		Well Configuration Type Horizontal					
Ground Elevation (ft) 4,874.00		Original KB Elevation (ft) 4,902.00		KB-Ground Distance (ft) 28.00		Spud Date 5/7/2022 23:30		Rig Release Date 5/12/2022 02:00		On Production Date		Abandon Date	

Casing Run Tally

Run #	Ref #	Item Des	OD (in)	Wt (lb/ft)	Grade	Run?	Len (ft)	Centralized?	Ext Jw/ry	Connections	Top (ftKB)	Cum Len (ft)
269	259	Casing Joints	5 1/2	20.00	P-110	Yes	46.91	Yes			5,686.8	12,129.22
270	260	Casing Joints	5 1/2	20.00	P-110	Yes	46.31	Yes			5,640.5	12,175.53
271	261	Casing Joints	5 1/2	20.00	P-110	Yes	46.80	Yes			5,593.7	12,222.33
272	262	Casing Joints	5 1/2	20.00	P-110	Yes	46.64	Yes			5,547.0	12,268.97
273	263	Casing Joints	5 1/2	20.00	P-110	Yes	46.65	Yes			5,500.4	12,315.62
274	264	Casing Joints	5 1/2	20.00	P-110	Yes	46.72	Yes			5,453.7	12,362.34
275	265	Casing Joints	5 1/2	20.00	P-110	Yes	45.75	Yes			5,407.9	12,408.09
276	266	Casing Joints	5 1/2	20.00	P-110	Yes	46.85	Yes			5,361.1	12,454.94
277	267	Casing Joints	5 1/2	20.00	P-110	Yes	46.65	Yes			5,314.4	12,501.59
278	268	Casing Joints	5 1/2	20.00	P-110	Yes	46.72	Yes			5,267.7	12,548.31
279	269	Casing Joints	5 1/2	20.00	P-110	Yes	46.81	Yes			5,220.9	12,595.12
280	270	Casing Joints	5 1/2	20.00	P-110	Yes	46.65	Yes			5,174.2	12,641.77
281	271	Casing Joints	5 1/2	20.00	P-110	Yes	46.82	Yes			5,127.4	12,688.59
282	272	Casing Joints	5 1/2	20.00	P-110	Yes	46.63	Yes			5,080.8	12,735.22
283	273	Casing Joints	5 1/2	20.00	P-110	Yes	46.64	Yes			5,034.1	12,781.86
284	274	Casing Joints	5 1/2	20.00	P-110	Yes	46.75	Yes			4,987.4	12,828.61
285	275	Casing Joints	5 1/2	20.00	P-110	Yes	46.71	Yes			4,940.7	12,875.32
286	276	Casing Joints	5 1/2	20.00	P-110	Yes	46.81	Yes			4,893.9	12,922.13
287	277	Casing Joints	5 1/2	20.00	P-110	Yes	46.80	Yes			4,847.1	12,968.93
288	278	Casing Joints	5 1/2	20.00	P-110	Yes	46.74	Yes			4,800.3	13,015.67
289	279	Casing Joints	5 1/2	20.00	P-110	Yes	46.65	Yes			4,753.7	13,062.32
290	280	Casing Joints	5 1/2	20.00	P-110	Yes	46.78	Yes			4,706.9	13,109.10
291	281	Casing Joints	5 1/2	20.00	P-110	Yes	47.10	Yes			4,659.8	13,156.20
292	282	Casing Joints	5 1/2	20.00	P-110	Yes	45.15	Yes			4,614.7	13,201.35
293	283	Casing Joints	5 1/2	20.00	P-110	Yes	46.65	Yes			4,568.0	13,248.00
294	284	Casing Joints	5 1/2	20.00	P-110	Yes	46.75	Yes			4,521.3	13,294.75
295	285	Casing Joints	5 1/2	20.00	P-110	Yes	46.74	Yes			4,474.5	13,341.49
296	286	Casing Joints	5 1/2	20.00	P-110	Yes	47.00	Yes			4,427.5	13,388.49
297	287	Casing Joints	5 1/2	20.00	P-110	Yes	47.11	Yes			4,380.4	13,435.60
298	288	Casing Joints	5 1/2	20.00	P-110	Yes	47.05	Yes			4,333.4	13,482.65
299	289	Casing Joints	5 1/2	20.00	P-110	Yes	47.14	Yes			4,286.2	13,529.79



Centralizer Depths

Well Name: Bost Farm 9N-8B-L

Production, Set Depth: 17,816.0ftKB

API 05123514540000		Surface Legal Location SWNW 7 5N 66W		Field Name Wattenberg		State CO		Well Configuration Type Horizontal					
Ground Elevation (ft) 4,874.00		Original KB Elevation (ft) 4,902.00		KB-Ground Distance (ft) 28.00		Spud Date 5/7/2022 23:30		Rig Release Date 5/12/2022 02:00		On Production Date		Abandon Date	

Casing Run Tally

Run #	Ref #	Item Des	OD (in)	Wt (lb/ft)	Grade	Run?	Len (ft)	Centralized?	Ext Jw/ry	Connections	Top (ftKB)	Cum Len (ft)
300	290	Casing Joints	5 1/2	20.00	P-110	Yes	47.15	Yes			4,239.1	13,576.94
301	291	Casing Joints	5 1/2	20.00	P-110	Yes	47.05	Yes			4,192.0	13,623.99
302	292	Casing Joints	5 1/2	20.00	P-110	Yes	47.15	Yes			4,144.9	13,671.14
303	293	Casing Joints	5 1/2	20.00	P-110	Yes	47.10	Yes			4,097.8	13,718.24
304	294	Casing Joints	5 1/2	20.00	P-110	Yes	46.70	Yes			4,051.1	13,764.94
305	295	Casing Joints	5 1/2	20.00	P-110	Yes	47.02	Yes			4,004.0	13,811.96
306	296	Casing Joints	5 1/2	20.00	P-110	Yes	47.00	Yes			3,957.0	13,858.96
307	297	Casing Joints	5 1/2	20.00	P-110	Yes	47.21	Yes			3,909.8	13,906.17
308	298	Casing Joints	5 1/2	20.00	P-110	Yes	46.68	Yes			3,863.2	13,952.85
309	299	Casing Joints	5 1/2	20.00	P-110	Yes	46.65	Yes			3,816.5	13,999.50
310	300	Casing Joints	5 1/2	20.00	P-110	Yes	47.04	Yes			3,769.5	14,046.54
311	301	Casing Joints	5 1/2	20.00	P-110	Yes	47.05	Yes			3,722.4	14,093.59
312	302	Casing Joints	5 1/2	20.00	P-110	Yes	47.15	Yes			3,675.3	14,140.74
313	303	Casing Joints	5 1/2	20.00	P-110	Yes	47.21	Yes			3,628.1	14,187.95
314	304	Casing Joints	5 1/2	20.00	P-110	Yes	47.02	Yes			3,581.0	14,234.97
315	305	Casing Joints	5 1/2	20.00	P-110	Yes	46.10	Yes			3,534.9	14,281.07
316	306	Casing Joints	5 1/2	20.00	P-110	Yes	47.15	Yes			3,487.8	14,328.22
317	307	Casing Joints	5 1/2	20.00	P-110	Yes	47.20	Yes			3,440.6	14,375.42
318	308	Casing Joints	5 1/2	20.00	P-110	Yes	37.20	Yes			3,403.4	14,412.62
319	309	Casing Joints	5 1/2	20.00	P-110	Yes	46.81	Yes			3,356.6	14,459.43
320	310	Casing Joints	5 1/2	20.00	P-110	Yes	47.10	Yes			3,309.5	14,506.53
321	311	Casing Joints	5 1/2	20.00	P-110	Yes	47.15	Yes			3,262.3	14,553.68
322	312	Casing Joints	5 1/2	20.00	P-110	Yes	47.05	Yes			3,215.3	14,600.73
323	313	Casing Joints	5 1/2	20.00	P-110	Yes	47.15	Yes			3,168.1	14,647.88
324	314	Casing Joints	5 1/2	20.00	P-110	Yes	47.04	Yes			3,121.1	14,694.92
325	315	Casing Joints	5 1/2	20.00	P-110	Yes	45.80	Yes			3,075.3	14,740.72
326	316	Casing Joints	5 1/2	20.00	P-110	Yes	47.15	Yes			3,028.1	14,787.87
327	317	Casing Joints	5 1/2	20.00	P-110	Yes	47.10	Yes			2,981.0	14,834.97
329	318	Casing Joints	5 1/2	20.00	P-110	Yes	47.10	Yes			2,918.8	14,897.22
330	319	Casing Joints	5 1/2	20.00	P-110	Yes	47.02	Yes			2,871.8	14,944.24
331	320	Casing Joints	5 1/2	20.00	P-110	Yes	47.00	Yes			2,824.8	14,991.24



Centralizer Depths

Well Name: Bost Farm 9N-8B-L

Production, Set Depth: 17,816.0ftKB

API 05123514540000		Surface Legal Location SWNW 7 5N 66W		Field Name Wattenberg		State CO		Well Configuration Type Horizontal					
Ground Elevation (ft) 4,874.00		Original KB Elevation (ft) 4,902.00		KB-Ground Distance (ft) 28.00		Spud Date 5/7/2022 23:30		Rig Release Date 5/12/2022 02:00		On Production Date		Abandon Date	

Casing Run Tally

Run #	Ref #	Item Des	OD (in)	Wt (lb/ft)	Grade	Run?	Len (ft)	Centralized?	Ext Jw/ry	Connections	Top (ftKB)	Cum Len (ft)
332	321	Casing Joints	5 1/2	20.00	P-110	Yes	46.64	Yes			2,778.1	15,037.88
333	322	Casing Joints	5 1/2	20.00	P-110	Yes	46.75	Yes			2,731.4	15,084.63
334	323	Casing Joints	5 1/2	20.00	P-110	Yes	46.74	Yes			2,684.6	15,131.37
335	324	Casing Joints	5 1/2	20.00	P-110	Yes	46.75	Yes			2,637.9	15,178.12
336	325	Casing Joints	5 1/2	20.00	P-110	Yes	45.31	Yes			2,592.6	15,223.43
337	326	Casing Joints	5 1/2	20.00	P-110	Yes	46.28	Yes			2,546.3	15,269.71
338	327	Casing Joints	5 1/2	20.00	P-110	Yes	46.04	Yes			2,500.3	15,315.75
339	328	Casing Joints	5 1/2	20.00	P-110	Yes	46.80	Yes			2,453.5	15,362.55
340	329	Casing Joints	5 1/2	20.00	P-110	Yes	46.81	Yes			2,406.6	15,409.36
341	330	Casing Joints	5 1/2	20.00	P-110	Yes	46.65	Yes			2,360.0	15,456.01
342	331	Casing Joints	5 1/2	20.00	P-110	Yes	45.65	Yes			2,314.3	15,501.66
343	332	Casing Joints	5 1/2	20.00	P-110	Yes	46.64	Yes			2,267.7	15,548.30
344	333	Casing Joints	5 1/2	20.00	P-110	Yes	46.65	Yes			2,221.1	15,594.95
345	334	Casing Joints	5 1/2	20.00	P-110	Yes	46.71	Yes			2,174.3	15,641.66
346	335	Casing Joints	5 1/2	20.00	P-110	Yes	47.15	Yes			2,127.2	15,688.81
347	336	Casing Joints	5 1/2	20.00	P-110	Yes	46.65	Yes			2,080.5	15,735.46
348	337	Casing Joints	5 1/2	20.00	P-110	Yes	36.81	Yes			2,043.7	15,772.27
349	338	Casing Joints	5 1/2	20.00	P-110	Yes	47.15	Yes			1,996.6	15,819.42
350	339	Casing Joints	5 1/2	20.00	P-110	Yes	46.65	Yes			1,949.9	15,866.07
351	340	Casing Joints	5 1/2	20.00	P-110	Yes	46.80	Yes			1,903.1	15,912.87
352	341	Casing Joints	5 1/2	20.00	P-110	Yes	46.70	Yes			1,856.4	15,959.57
353	342	Casing Joints	5 1/2	20.00	P-110	Yes	46.60	Yes			1,809.8	16,006.17
354	343	Casing Joints	5 1/2	20.00	P-110	Yes	45.68	Yes			1,764.2	16,051.85
355	344	Casing Joints	5 1/2	20.00	P-110	Yes	46.65	Yes			1,717.5	16,098.50
356	345	Casing Joints	5 1/2	20.00	P-110	Yes	46.71	Yes			1,670.8	16,145.21
357	346	Casing Joints	5 1/2	20.00	P-110	Yes	46.74	Yes			1,624.1	16,191.95
358	347	Casing Joints	5 1/2	20.00	P-110	Yes	46.70	Yes			1,577.4	16,238.65
359	348	Casing Joints	5 1/2	20.00	P-110	Yes	46.64	Yes			1,530.7	16,285.29
360	349	Casing Joints	5 1/2	20.00	P-110	Yes	45.65	Yes			1,485.1	16,330.94
361	350	Casing Joints	5 1/2	20.00	P-110	Yes	46.71	Yes			1,438.4	16,377.65
362	351	Casing Joints	5 1/2	20.00	P-110	Yes	46.62	Yes			1,391.7	16,424.27



Centralizer Depths

Well Name: Bost Farm 9N-8B-L

Production, Set Depth: 17,816.0ftKB

API 05123514540000		Surface Legal Location SWNW 7 5N 66W		Field Name Wattenberg		State CO		Well Configuration Type Horizontal	
Ground Elevation (ft) 4,874.00		Original KB Elevation (ft) 4,902.00		KB-Ground Distance (ft) 28.00		Spud Date 5/7/2022 23:30		Rig Release Date 5/12/2022 02:00	
						On Production Date		Abandon Date	

Casing Run Tally

Run #	Ref #	Item Des	OD (in)	Wt (lb/ft)	Grade	Run?	Len (ft)	Centralized?	Ext Jw/ry	Connections	Top (ftKB)	Cum Len (ft)
363	352	Casing Joints	5 1/2	20.00	P-110	Yes	46.55	Yes			1,345.2	16,470.82
364	353	Casing Joints	5 1/2	20.00	P-110	Yes	46.70	Yes			1,298.5	16,517.52
365	354	Casing Joints	5 1/2	20.00	P-110	Yes	47.11	Yes			1,251.4	16,564.63
366	355	Casing Joints	5 1/2	20.00	P-110	Yes	46.65	Yes			1,204.7	16,611.28
367	356	Casing Joints	5 1/2	20.00	P-110	Yes	46.81	Yes			1,157.9	16,658.09
368	357	Casing Joints	5 1/2	20.00	P-110	Yes	45.30	Yes			1,112.6	16,703.39
369	358	Casing Joints	5 1/2	20.00	P-110	Yes	45.42	Yes			1,067.2	16,748.81
370	359	Casing Joints	5 1/2	20.00	P-110	Yes	46.74	Yes			1,020.5	16,795.55
371	360	Casing Joints	5 1/2	20.00	P-110	Yes	46.68	Yes			973.8	16,842.23
372	361	Casing Joints	5 1/2	20.00	P-110	Yes	46.68	Yes			927.1	16,888.91
373	362	Casing Joints	5 1/2	20.00	P-110	Yes	46.75	Yes			880.3	16,935.66
374	363	Casing Joints	5 1/2	20.00	P-110	Yes	46.72	Yes			833.6	16,982.38
375	364	Casing Joints	5 1/2	20.00	P-110	Yes	46.71	Yes			786.9	17,029.09
376	365	Casing Joints	5 1/2	20.00	P-110	Yes	43.80	Yes			743.1	17,072.89
377	366	Casing Joints	5 1/2	20.00	P-110	Yes	46.80	Yes			696.3	17,119.69
378	367	Casing Joints	5 1/2	20.00	P-110	Yes	45.75	Yes			650.6	17,165.44
379	368	Casing Joints	5 1/2	20.00	P-110	Yes	47.15	Yes			603.4	17,212.59
380	369	Casing Joints	5 1/2	20.00	P-110	Yes	46.64	Yes			556.8	17,259.23
381	370	Casing Joints	5 1/2	20.00	P-110	Yes	46.65	Yes			510.1	17,305.88
382	371	Casing Joints	5 1/2	20.00	P-110	Yes	46.74	Yes			463.4	17,352.62