

PDC Energy Inc. DJ Basin

Bost Farm 9C-8-L
 Bost Farms 5-7 Pad SEC.7-T5N-R66W
 North American Datum 1983 , US State Plane 1983, Colorado Northern Zone
 Ground Elevation: 4874.0
 +N/-S +E/-W Northing Easting Longitude Slot
 0.0 0.0 1394603.50 3187096.69 40.414643 -104.828072
 Patterson 272 - RKB 28WELL @ 4902.0ft (Patterson 272 - RKB 28')



Bost Farms 5-7 Pad SEC.7-T5N-R66W
 Bost Farm 9C-8-L
 9C-8-L_Final Surveys
 9:58, May 17 2022

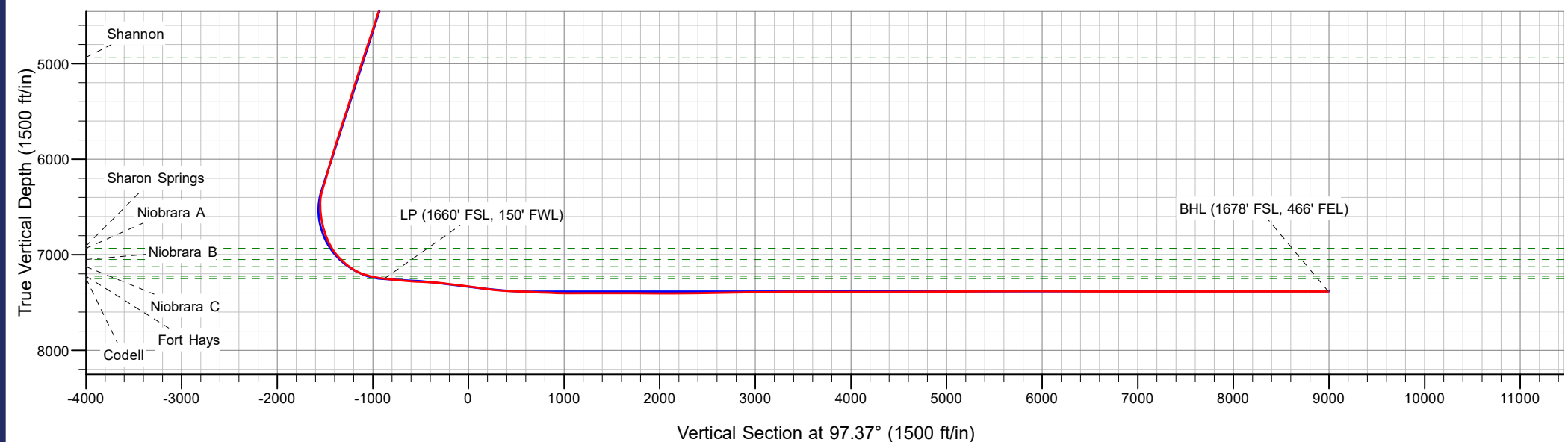
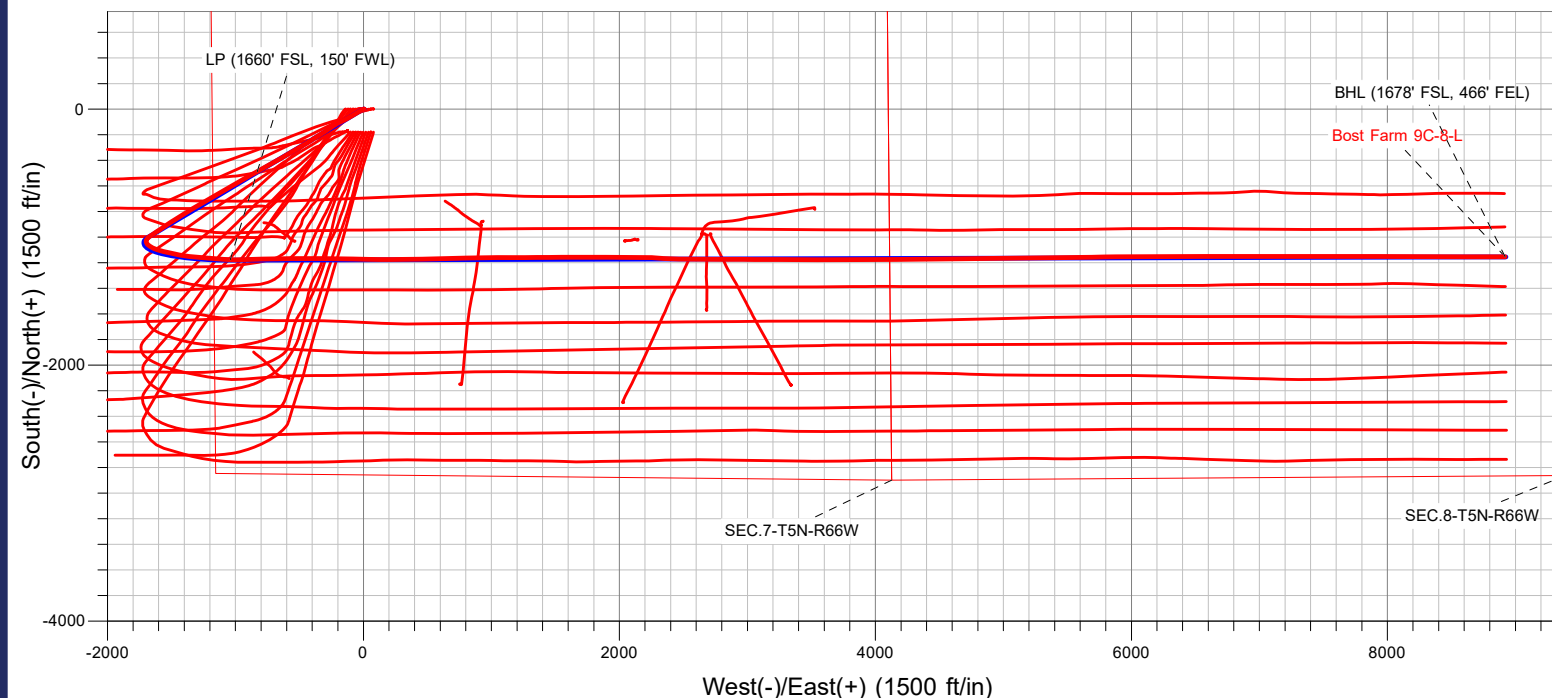
T
 Azimuths to True North
 Magnetic North: 7.92°

Magnetic Field
 Strength: 51943.2nT
 Dip Angle: 66.67°
 Date: 05/01/2022
 Model: HRGM

ANNOTATIONS

MD	TVD	Annotation
7987.4	7250.0	LP (1660' FSL, 150' FWL)
17956.0	7383.2	BHL (1678' FSL, 466' FEL)

FINAL SURVEY
Projected Bottom Hole Location
17956' MD / 7383.2' TVD
90.09° INC / 90.02° AZM
1678' FSL / 466' FEL





PDC Energy Inc. DJ Basin

SEC.7-T5N-R66W

Bost Farms 5-7 Pad SEC.7-T5N-R66W

Bost Farm 9C-8-L

Bost Farm 9C-8-L Wellbore #1

Survey: 9C-8-L_As Drilled

Standard Survey Report

17 May, 2022



Company:	PDC Energy Inc. DJ Basin	Local Co-ordinate Reference:	Well Bost Farm 9C-8-L
Project:	SEC.7-T5N-R66W	TVD Reference:	WELL @ 4902.0ft (Patterson 272 - RKB 28')
Site:	Bost Farms 5-7 Pad SEC.7-T5N-R66W	MD Reference:	WELL @ 4902.0ft (Patterson 272 - RKB 28')
Well:	Bost Farm 9C-8-L	North Reference:	True
Wellbore:	Bost Farm 9C-8-L Wellbore #1	Survey Calculation Method:	Minimum Curvature
Design:	9C-8-L_Final Surveys	Database:	US_EDM

Project	SEC.7-T5N-R66W, Weld County, Co		
Map System:	US State Plane 1983	System Datum:	Mean Sea Level
Geo Datum:	North American Datum 1983		
Map Zone:	Colorado Northern Zone		Using geodetic scale factor

Site	Bost Farms 5-7 Pad SEC.7-T5N-R66W				
Site Position:		Northing:	1,394,603.55 usft	Latitude:	40.414641
From:	Lat/Long	Easting:	3,187,178.01 usft	Longitude:	-104.827780
Position Uncertainty:	0.0 ft	Slot Radius:	13-3/16 "	Grid Convergence:	0.43 °

Well	Bost Farm 9C-8-L					
Well Position	+N/-S	0.0 ft	Northing:	1,394,603.50 usft	Latitude:	40.414643
	+E/-W	0.0 ft	Easting:	3,187,096.69 usft	Longitude:	-104.828072
Position Uncertainty		0.0 ft	Wellhead Elevation:	ft	Ground Level:	4,874.0 ft

Wellbore	Bost Farm 9C-8-L Wellbore #1				
Magnetics	Model Name	Sample Date	Declination (°)	Dip Angle (°)	Field Strength (nT)
	HRGM	05/01/2022	7.92	66.67	51,943.22919070

Design	9C-8-L_Final Surveys				
Audit Notes:					
Version:	1.0	Phase:	ACTUAL	Tie On Depth:	0.0
Vertical Section:	Depth From (TVD) (ft)	+N/-S (ft)	+E/-W (ft)	Direction (°)	
	0.0	0.0	0.0	97.37	

Survey Program	Date	05/17/2022			
From (ft)	To (ft)	Survey (Wellbore)	Tool Name	Description	
161.5	17,956.0	9C-8-L_As Drilled (Bost Farm 9C-8-L Well	MWD	MWD - Standard	

Survey										
Measured Depth (ft)	Inclination (°)	Azimuth (°)	Vertical Depth (ft)	+N/-S (ft)	+E/-W (ft)	Vertical Section (ft)	Dogleg Rate (°/100usft)	Build Rate (°/100usft)	Turn Rate (°/100usft)	
0.0	0.00	0.00	0.0	0.0	0.0	0.0	0.00	0.00	0.00	
161.5	0.40	97.90	161.5	-0.1	0.6	0.6	0.25	0.25	0.00	
252.5	0.70	104.10	252.5	-0.3	1.4	1.4	0.34	0.33	6.81	
344.5	0.70	83.20	344.5	-0.3	2.5	2.5	0.28	0.00	-22.72	
433.5	0.40	115.30	433.5	-0.4	3.3	3.4	0.47	-0.34	36.07	
522.5	0.40	126.00	522.5	-0.7	3.9	3.9	0.08	0.00	12.02	
612.5	0.20	108.80	612.5	-0.9	4.3	4.4	0.24	-0.22	-19.11	
702.5	0.30	28.10	702.5	-0.8	4.5	4.6	0.37	0.11	-89.67	
787.5	0.40	22.50	787.5	-0.3	4.7	4.7	0.12	0.11	-6.59	
Fox Hills Aq Base										
791.5	0.40	22.30	791.5	-0.3	4.8	4.8	0.12	0.11	-4.94	

Company:	PDC Energy Inc. DJ Basin	Local Co-ordinate Reference:	Well Bost Farm 9C-8-L
Project:	SEC.7-T5N-R66W	TVD Reference:	WELL @ 4902.0ft (Patterson 272 - RKB 28')
Site:	Bost Farms 5-7 Pad SEC.7-T5N-R66W	MD Reference:	WELL @ 4902.0ft (Patterson 272 - RKB 28')
Well:	Bost Farm 9C-8-L	North Reference:	True
Wellbore:	Bost Farm 9C-8-L Wellbore #1	Survey Calculation Method:	Minimum Curvature
Design:	9C-8-L_Final Surveys	Database:	US_EDM

Survey

Measured Depth (ft)	Inclination (°)	Azimuth (°)	Vertical Depth (ft)	+N/-S (ft)	+E/-W (ft)	Vertical Section (ft)	Dogleg Rate (°/100usft)	Build Rate (°/100usft)	Turn Rate (°/100usft)
880.5	1.50	283.40	880.5	0.3	3.7	3.7	1.81	1.24	-111.12
970.5	2.20	258.20	970.4	0.2	0.9	0.9	1.17	0.78	-28.00
1,059.5	4.00	240.70	1,059.3	-1.7	-3.5	-3.2	2.26	2.02	-19.66
1,149.5	5.90	241.40	1,148.9	-5.4	-10.3	-9.5	2.11	2.11	0.78
1,238.5	7.80	240.30	1,237.3	-10.6	-19.5	-18.0	2.14	2.13	-1.24
1,328.5	9.60	243.50	1,326.3	-17.0	-31.6	-29.1	2.07	2.00	3.56
1,417.5	11.30	237.70	1,413.8	-25.0	-45.6	-42.0	2.24	1.91	-6.52
1,506.5	12.30	234.20	1,500.9	-35.2	-60.6	-55.6	1.38	1.12	-3.93
1,607.5	12.80	236.60	1,599.5	-47.6	-78.7	-71.9	0.72	0.50	2.38
1,685.0	12.36	241.39	1,675.1	-56.3	-93.1	-85.2	1.46	-0.57	6.18
1,779.0	11.28	242.00	1,767.1	-65.5	-110.1	-100.8	1.16	-1.15	0.65
1,874.0	13.45	245.42	1,859.9	-74.4	-128.3	-117.7	2.41	2.28	3.60
1,969.0	16.37	242.83	1,951.7	-85.1	-150.3	-138.2	3.15	3.07	-2.73
2,063.0	18.30	243.82	2,041.5	-97.7	-175.3	-161.4	2.08	2.05	1.05
2,158.0	22.45	241.06	2,130.5	-113.1	-204.6	-188.4	4.48	4.37	-2.91
2,253.0	23.08	237.38	2,218.1	-131.9	-236.2	-217.3	1.64	0.66	-3.87
2,347.0	22.62	238.02	2,304.7	-151.4	-267.0	-245.4	0.56	-0.49	0.68
2,442.0	22.56	237.02	2,392.4	-171.0	-297.8	-273.4	0.41	-0.06	-1.05
2,536.0	23.19	237.84	2,479.0	-190.6	-328.6	-301.4	0.75	0.67	0.87
2,631.0	23.38	235.60	2,566.3	-211.2	-360.0	-329.9	0.95	0.20	-2.36
2,725.0	22.51	235.19	2,652.9	-232.1	-390.2	-357.2	0.94	-0.93	-0.44
2,820.0	22.54	236.51	2,740.6	-252.5	-420.3	-384.4	0.53	0.03	1.39
2,915.0	22.11	239.12	2,828.5	-271.7	-450.8	-412.2	1.14	-0.45	2.75
3,009.0	23.10	239.83	2,915.3	-290.1	-481.9	-440.7	1.09	1.05	0.76
3,104.0	21.41	239.32	3,003.2	-308.3	-513.0	-469.2	1.79	-1.78	-0.54
3,199.0	22.05	240.56	3,091.5	-325.9	-543.4	-497.1	0.83	0.67	1.31
3,294.0	20.97	241.73	3,179.8	-342.7	-573.9	-525.2	1.22	-1.14	1.23
3,389.0	21.24	239.86	3,268.5	-359.4	-603.8	-552.7	0.76	0.28	-1.97
3,484.0	21.81	240.52	3,356.8	-376.7	-634.0	-580.4	0.65	0.60	0.69
3,579.0	22.58	237.20	3,444.8	-395.3	-664.7	-608.5	1.55	0.81	-3.49
3,673.0	22.05	241.58	3,531.8	-413.5	-695.4	-636.6	1.86	-0.56	4.66
3,768.0	20.27	241.68	3,620.4	-429.7	-725.6	-664.4	1.87	-1.87	0.11
3,862.0	22.64	240.46	3,707.8	-446.4	-755.6	-692.1	2.57	2.52	-1.30
3,898.5	22.66	240.64	3,741.5	-453.3	-767.9	-703.4	0.20	0.05	0.50
Parkman									
3,957.0	22.69	240.93	3,795.5	-464.3	-787.6	-721.5	0.20	0.05	0.49
4,051.0	22.41	241.00	3,882.3	-481.8	-819.1	-750.5	0.30	-0.30	0.07
4,146.0	22.62	241.26	3,970.1	-499.4	-850.9	-779.9	0.24	0.22	0.27
4,241.0	22.70	241.43	4,057.7	-516.9	-883.0	-809.5	0.11	0.08	0.18
4,335.0	22.91	241.03	4,144.4	-534.5	-915.0	-838.9	0.28	0.22	-0.43
4,430.0	22.29	240.98	4,232.1	-552.2	-946.9	-868.3	0.65	-0.65	-0.05
4,490.9	22.10	239.01	4,288.5	-563.7	-966.8	-886.6	1.26	-0.31	-3.24
Sussex									

Company:	PDC Energy Inc. DJ Basin	Local Co-ordinate Reference:	Well Bost Farm 9C-8-L
Project:	SEC.7-T5N-R66W	TVD Reference:	WELL @ 4902.0ft (Patterson 272 - RKB 28')
Site:	Bost Farms 5-7 Pad SEC.7-T5N-R66W	MD Reference:	WELL @ 4902.0ft (Patterson 272 - RKB 28')
Well:	Bost Farm 9C-8-L	North Reference:	True
Wellbore:	Bost Farm 9C-8-L Wellbore #1	Survey Calculation Method:	Minimum Curvature
Design:	9C-8-L_Final Surveys	Database:	US_EDM

Survey

Measured Depth (ft)	Inclination (°)	Azimuth (°)	Vertical Depth (ft)	+N/-S (ft)	+E/-W (ft)	Vertical Section (ft)	Dogleg Rate (°/100usft)	Build Rate (°/100usft)	Turn Rate (°/100usft)
4,525.0	22.01	237.89	4,320.1	-570.4	-977.7	-896.5	1.26	-0.28	-3.28
4,620.0	22.14	240.36	4,408.1	-588.7	-1,008.4	-924.6	0.99	0.14	2.60
4,714.0	22.30	238.37	4,495.1	-606.8	-1,039.0	-952.6	0.82	0.17	-2.12
4,809.0	22.01	238.70	4,583.1	-625.5	-1,069.5	-980.5	0.33	-0.31	0.35
4,904.0	22.66	240.49	4,671.0	-643.8	-1,100.7	-1,009.0	0.99	0.68	1.88
4,999.0	22.87	242.15	4,758.6	-661.4	-1,132.9	-1,038.7	0.71	0.22	1.75
5,187.2	22.11	240.41	4,932.5	-696.0	-1,196.1	-1,096.9	0.54	-0.40	-0.93
Shannon									
5,188.0	22.11	240.40	4,933.2	-696.1	-1,196.3	-1,097.2	0.54	-0.40	-0.96
5,283.0	21.51	236.75	5,021.4	-714.5	-1,226.4	-1,124.7	1.56	-0.63	-3.84
5,377.0	22.65	240.35	5,108.5	-732.9	-1,256.6	-1,152.2	1.88	1.21	3.83
5,472.0	21.74	239.87	5,196.5	-750.8	-1,287.7	-1,180.8	0.98	-0.96	-0.51
5,661.0	21.76	239.22	5,372.1	-786.3	-1,348.1	-1,236.1	0.13	0.01	-0.34
5,756.0	21.15	239.38	5,460.5	-804.0	-1,377.9	-1,263.4	0.65	-0.64	0.17
5,851.0	22.84	239.42	5,548.5	-822.1	-1,408.6	-1,291.5	1.78	1.78	0.04
5,945.0	22.67	237.26	5,635.2	-841.2	-1,439.5	-1,319.7	0.91	-0.18	-2.30
6,135.0	22.53	236.79	5,810.6	-880.9	-1,500.8	-1,375.4	0.12	-0.07	-0.25
6,230.0	22.50	235.41	5,898.4	-901.2	-1,530.9	-1,402.7	0.56	-0.03	-1.45
6,325.0	22.37	236.79	5,986.2	-921.5	-1,561.0	-1,430.0	0.57	-0.14	1.45
6,419.0	20.64	235.34	6,073.7	-940.7	-1,589.6	-1,455.9	1.93	-1.84	-1.54
6,514.0	19.90	236.30	6,162.8	-959.2	-1,616.9	-1,480.5	0.85	-0.78	1.01
6,609.0	21.99	236.02	6,251.5	-978.1	-1,645.1	-1,506.0	2.20	2.20	-0.29
6,703.0	21.09	237.03	6,338.9	-997.1	-1,673.8	-1,532.1	1.04	-0.96	1.07
6,798.0	15.12	205.15	6,429.4	-1,017.7	-1,693.5	-1,549.0	11.96	-6.28	-33.56
6,893.0	11.46	169.09	6,522.0	-1,038.2	-1,697.0	-1,549.8	9.34	-3.85	-37.96
6,987.0	12.72	136.56	6,614.0	-1,054.9	-1,688.1	-1,538.9	7.27	1.34	-34.61
7,082.0	16.16	125.71	6,706.0	-1,070.3	-1,670.2	-1,519.1	4.59	3.62	-11.42
7,176.0	18.94	116.04	6,795.7	-1,084.6	-1,645.8	-1,493.1	4.28	2.96	-10.29
7,271.0	27.55	106.96	6,882.9	-1,097.8	-1,610.9	-1,456.8	9.79	9.06	-9.56
7,299.1	30.32	106.14	6,907.5	-1,101.7	-1,597.8	-1,443.4	9.97	9.87	-2.93
Sharon Springs									
7,327.3	33.11	105.44	6,931.5	-1,105.7	-1,583.6	-1,428.7	9.97	9.88	-2.48
Niobrara A									
7,365.0	36.84	104.65	6,962.4	-1,111.3	-1,562.7	-1,407.3	9.97	9.90	-2.09
7,460.0	42.40	103.06	7,035.5	-1,125.8	-1,503.9	-1,347.1	5.95	5.85	-1.67
7,477.8	43.85	102.62	7,048.5	-1,128.5	-1,492.1	-1,335.0	8.30	8.13	-2.48
Niobrara B									
7,555.0	50.14	100.94	7,101.1	-1,139.9	-1,436.8	-1,278.7	8.30	8.15	-2.17
7,593.0	53.86	99.01	7,124.5	-1,145.1	-1,407.4	-1,248.9	10.59	9.81	-5.07
Niobrara C									
7,649.0	59.41	96.48	7,155.3	-1,151.4	-1,361.0	-1,202.1	10.59	9.90	-4.52
7,744.0	67.87	93.57	7,197.5	-1,158.7	-1,276.3	-1,117.1	9.32	8.91	-3.06
7,835.2	77.58	94.71	7,224.5	-1,165.0	-1,189.5	-1,030.3	10.72	10.65	1.26
Fort Hays									
7,839.0	77.99	94.76	7,225.3	-1,165.4	-1,185.8	-1,026.6	10.72	10.66	1.19

Company:	PDC Energy Inc. DJ Basin	Local Co-ordinate Reference:	Well Bost Farm 9C-8-L
Project:	SEC.7-T5N-R66W	TVD Reference:	WELL @ 4902.0ft (Patterson 272 - RKB 28')
Site:	Bost Farms 5-7 Pad SEC.7-T5N-R66W	MD Reference:	WELL @ 4902.0ft (Patterson 272 - RKB 28')
Well:	Bost Farm 9C-8-L	North Reference:	True
Wellbore:	Bost Farm 9C-8-L Wellbore #1	Survey Calculation Method:	Minimum Curvature
Design:	9C-8-L_Final Surveys	Database:	US_EDM

Survey

Measured Depth (ft)	Inclination (°)	Azimuth (°)	Vertical Depth (ft)	+N/-S (ft)	+E/-W (ft)	Vertical Section (ft)	Dogleg Rate (°/100usft)	Build Rate (°/100usft)	Turn Rate (°/100usft)
7,933.0	81.09	95.85	7,242.4	-1,173.9	-1,093.8	-934.2	3.49	3.30	1.16
7,975.8	82.43	92.58	7,248.5	-1,177.0	-1,051.6	-892.0	8.18	3.13	-7.64
Codell									
7,987.4	82.80	91.70	7,250.0	-1,177.4	-1,040.1	-880.5	8.18	3.17	-7.61
LP (1660' FSL, 150' FWL)									
8,028.0	84.10	88.62	7,254.6	-1,177.6	-999.7	-840.5	8.18	3.20	-7.58
8,123.0	84.19	88.70	7,264.3	-1,175.3	-905.3	-747.0	0.13	0.09	0.08
8,217.0	84.90	88.65	7,273.3	-1,173.2	-811.7	-654.5	0.76	0.76	-0.05
8,312.0	87.10	88.65	7,279.9	-1,170.9	-717.0	-560.9	2.32	2.32	0.00
8,407.0	87.16	88.44	7,284.6	-1,168.5	-622.1	-467.1	0.23	0.06	-0.22
8,501.0	87.00	89.17	7,289.4	-1,166.6	-528.3	-374.3	0.79	-0.17	0.78
8,596.0	83.60	90.41	7,297.2	-1,166.2	-433.6	-280.5	3.81	-3.58	1.31
8,691.0	83.16	90.67	7,308.2	-1,167.1	-339.2	-186.8	0.54	-0.46	0.27
8,786.0	82.77	91.11	7,319.8	-1,168.6	-245.0	-93.1	0.62	-0.41	0.46
8,880.0	82.44	90.70	7,331.9	-1,170.1	-151.8	-0.4	0.56	-0.35	-0.44
8,975.0	82.02	91.13	7,344.7	-1,171.6	-57.7	93.1	0.63	-0.44	0.45
9,070.0	82.08	91.08	7,357.9	-1,173.4	36.4	186.6	0.08	0.06	-0.05
9,164.0	84.94	90.54	7,368.5	-1,174.7	129.8	279.4	3.10	3.04	-0.57
9,259.0	85.18	90.41	7,376.7	-1,175.5	224.4	373.3	0.29	0.25	-0.14
9,354.0	88.21	88.01	7,382.2	-1,174.2	319.3	467.2	4.07	3.19	-2.53
9,448.0	87.81	89.40	7,385.4	-1,172.0	413.2	560.1	1.54	-0.43	1.48
9,543.0	87.47	88.86	7,389.3	-1,170.6	508.1	654.0	0.67	-0.36	-0.57
9,638.0	87.49	88.68	7,393.5	-1,168.6	603.0	747.9	0.19	0.02	-0.19
9,732.0	87.50	88.56	7,397.6	-1,166.3	696.8	840.7	0.13	0.01	-0.13
9,826.0	88.18	88.80	7,401.2	-1,164.1	790.8	933.5	0.77	0.72	0.26
9,920.0	89.28	88.40	7,403.2	-1,161.8	884.7	1,026.4	1.25	1.17	-0.43
10,015.0	90.10	89.87	7,403.8	-1,160.4	979.7	1,120.4	1.77	0.86	1.55
10,109.0	90.78	89.99	7,403.0	-1,160.3	1,073.7	1,213.6	0.73	0.72	0.13
10,203.0	90.65	89.61	7,401.9	-1,160.0	1,167.7	1,306.8	0.43	-0.14	-0.40
10,297.0	89.99	89.53	7,401.3	-1,159.3	1,261.7	1,399.9	0.71	-0.70	-0.09
10,391.0	89.96	89.47	7,401.4	-1,158.4	1,355.7	1,493.0	0.07	-0.03	-0.06
10,485.0	89.78	89.83	7,401.6	-1,157.9	1,449.7	1,586.2	0.43	-0.19	0.38
10,579.0	89.31	89.58	7,402.3	-1,157.4	1,543.7	1,679.4	0.57	-0.50	-0.27
10,674.0	89.40	89.98	7,403.4	-1,157.0	1,638.7	1,773.5	0.43	0.09	0.42
10,768.0	89.19	90.02	7,404.6	-1,157.0	1,732.6	1,866.7	0.23	-0.22	0.04
10,862.0	90.31	89.36	7,405.0	-1,156.5	1,826.6	1,959.9	1.38	1.19	-0.70
10,957.0	89.84	90.63	7,404.9	-1,156.5	1,921.6	2,054.1	1.43	-0.49	1.34
11,052.0	90.35	90.76	7,404.7	-1,157.7	2,016.6	2,148.5	0.55	0.54	0.14
11,146.0	90.46	90.78	7,404.0	-1,158.9	2,110.6	2,241.8	0.12	0.12	0.02
11,241.0	90.28	89.90	7,403.4	-1,159.5	2,205.6	2,336.1	0.95	-0.19	-0.93
11,335.0	91.29	94.92	7,402.1	-1,163.4	2,299.5	2,429.7	5.45	1.07	5.34
11,524.0	91.81	89.94	7,397.0	-1,171.4	2,488.2	2,617.9	2.65	0.28	-2.63
11,618.0	90.51	90.10	7,395.1	-1,171.5	2,582.2	2,711.1	1.39	-1.38	0.17

Company:	PDC Energy Inc. DJ Basin	Local Co-ordinate Reference:	Well Bost Farm 9C-8-L
Project:	SEC.7-T5N-R66W	TVD Reference:	WELL @ 4902.0ft (Patterson 272 - RKB 28')
Site:	Bost Farms 5-7 Pad SEC.7-T5N-R66W	MD Reference:	WELL @ 4902.0ft (Patterson 272 - RKB 28')
Well:	Bost Farm 9C-8-L	North Reference:	True
Wellbore:	Bost Farm 9C-8-L Wellbore #1	Survey Calculation Method:	Minimum Curvature
Design:	9C-8-L_Final Surveys	Database:	US_EDM

Survey

Measured Depth (ft)	Inclination (°)	Azimuth (°)	Vertical Depth (ft)	+N/-S (ft)	+E/-W (ft)	Vertical Section (ft)	Dogleg Rate (°/100usft)	Build Rate (°/100usft)	Turn Rate (°/100usft)
11,712.0	90.46	90.51	7,394.3	-1,172.0	2,676.2	2,804.4	0.44	-0.05	0.44
11,806.0	90.84	90.39	7,393.3	-1,172.7	2,770.2	2,897.7	0.42	0.40	-0.13
11,901.0	89.71	90.54	7,392.8	-1,173.5	2,865.2	2,992.0	1.20	-1.19	0.16
11,994.0	90.82	90.05	7,392.4	-1,174.0	2,958.1	3,084.3	1.30	1.19	-0.53
12,089.0	90.75	90.09	7,391.1	-1,174.1	3,053.1	3,178.5	0.08	-0.07	0.04
12,183.0	90.80	90.14	7,389.8	-1,174.3	3,147.1	3,271.7	0.08	0.05	0.05
12,277.0	90.50	90.28	7,388.7	-1,174.6	3,241.1	3,365.0	0.35	-0.32	0.15
12,371.0	90.34	90.02	7,388.0	-1,174.9	3,335.1	3,458.3	0.32	-0.17	-0.28
12,464.0	90.06	90.56	7,387.7	-1,175.3	3,428.1	3,550.5	0.65	-0.30	0.58
12,558.0	89.92	89.58	7,387.7	-1,175.4	3,522.1	3,643.8	1.05	-0.15	-1.04
12,652.0	89.53	90.42	7,388.2	-1,175.4	3,616.1	3,737.0	0.99	-0.41	0.89
12,841.0	89.99	89.75	7,389.0	-1,175.7	3,805.1	3,924.5	0.43	0.24	-0.35
12,935.0	89.39	89.99	7,389.5	-1,175.5	3,899.1	4,017.7	0.69	-0.64	0.26
13,029.0	89.05	90.54	7,390.8	-1,175.9	3,993.1	4,110.9	0.69	-0.36	0.59
13,124.0	90.48	89.29	7,391.1	-1,175.8	4,088.1	4,205.1	2.00	1.51	-1.32
13,218.0	90.65	89.48	7,390.2	-1,174.8	4,182.1	4,298.2	0.27	0.18	0.20
13,312.0	90.14	88.95	7,389.6	-1,173.5	4,276.1	4,391.3	0.78	-0.54	-0.56
13,407.0	89.91	89.44	7,389.5	-1,172.2	4,371.1	4,485.3	0.57	-0.24	0.52
13,501.0	90.13	89.29	7,389.5	-1,171.1	4,465.1	4,578.4	0.28	0.23	-0.16
13,596.0	91.05	89.48	7,388.5	-1,170.1	4,560.0	4,672.5	0.99	0.97	0.20
13,690.0	90.05	89.64	7,387.6	-1,169.4	4,654.0	4,765.6	1.08	-1.06	0.17
13,784.0	90.74	89.69	7,387.0	-1,168.8	4,748.0	4,858.7	0.74	0.73	0.05
13,878.0	90.33	88.76	7,386.1	-1,167.6	4,842.0	4,951.8	1.08	-0.44	-0.99
13,973.0	90.22	89.18	7,385.6	-1,165.9	4,937.0	5,045.8	0.46	-0.12	0.44
14,162.0	90.48	89.53	7,384.5	-1,163.7	5,126.0	5,232.9	0.23	0.14	0.19
14,257.0	90.57	89.10	7,383.6	-1,162.6	5,221.0	5,327.0	0.46	0.09	-0.45
14,351.0	90.18	89.03	7,383.0	-1,161.1	5,315.0	5,420.0	0.42	-0.41	-0.07
14,445.0	90.41	89.10	7,382.5	-1,159.5	5,408.9	5,513.0	0.26	0.24	0.07
14,539.0	89.78	89.42	7,382.4	-1,158.3	5,502.9	5,606.1	0.75	-0.67	0.34
14,634.0	91.17	89.64	7,381.6	-1,157.5	5,597.9	5,700.2	1.48	1.46	0.23
14,728.0	90.05	89.12	7,380.6	-1,156.5	5,691.9	5,793.2	1.31	-1.19	-0.55
14,822.0	89.93	89.32	7,380.6	-1,155.2	5,785.9	5,886.3	0.25	-0.13	0.21
14,916.0	89.18	89.61	7,381.3	-1,154.4	5,879.9	5,979.4	0.86	-0.80	0.31
15,010.0	89.88	89.63	7,382.1	-1,153.7	5,973.9	6,072.5	0.74	0.74	0.02
15,104.0	89.92	89.76	7,382.3	-1,153.2	6,067.9	6,165.7	0.14	0.04	0.14
15,199.0	89.57	89.82	7,382.7	-1,152.9	6,162.9	6,259.9	0.37	-0.37	0.06
15,293.0	89.88	89.86	7,383.1	-1,152.6	6,256.9	6,353.0	0.33	0.33	0.04
15,386.0	90.03	90.17	7,383.2	-1,152.7	6,349.9	6,445.3	0.37	0.16	0.33
15,481.0	89.61	89.68	7,383.5	-1,152.5	6,444.9	6,539.5	0.68	-0.44	-0.52
15,575.0	89.51	89.38	7,384.2	-1,151.8	6,538.9	6,632.6	0.34	-0.11	-0.32
15,763.0	90.08	89.63	7,384.9	-1,150.1	6,726.9	6,818.8	0.33	0.30	0.13
15,857.0	89.95	89.33	7,384.9	-1,149.3	6,820.9	6,911.9	0.35	-0.14	-0.32
15,951.0	89.85	90.50	7,385.0	-1,149.1	6,914.9	7,005.1	1.25	-0.11	1.24
16,045.0	90.34	90.16	7,384.9	-1,149.7	7,008.9	7,098.4	0.63	0.52	-0.36

Company:	PDC Energy Inc. DJ Basin	Local Co-ordinate Reference:	Well Bost Farm 9C-8-L
Project:	SEC.7-T5N-R66W	TVD Reference:	WELL @ 4902.0ft (Patterson 272 - RKB 28')
Site:	Bost Farms 5-7 Pad SEC.7-T5N-R66W	MD Reference:	WELL @ 4902.0ft (Patterson 272 - RKB 28')
Well:	Bost Farm 9C-8-L	North Reference:	True
Wellbore:	Bost Farm 9C-8-L Wellbore #1	Survey Calculation Method:	Minimum Curvature
Design:	9C-8-L_Final Surveys	Database:	US_EDM

Survey

Measured Depth (ft)	Inclination (°)	Azimuth (°)	Vertical Depth (ft)	+N/-S (ft)	+E/-W (ft)	Vertical Section (ft)	Dogleg Rate (°/100usft)	Build Rate (°/100usft)	Turn Rate (°/100usft)
16,233.0	89.93	89.94	7,384.4	-1,149.8	7,196.9	7,284.9	0.25	-0.22	-0.12
16,422.0	90.01	90.02	7,384.5	-1,149.8	7,385.9	7,472.3	0.06	0.04	0.04
16,610.0	90.29	90.23	7,384.0	-1,150.2	7,573.9	7,658.8	0.19	0.15	0.11
16,703.0	89.80	90.18	7,384.0	-1,150.5	7,666.9	7,751.1	0.53	-0.53	-0.05
16,797.0	89.93	90.11	7,384.2	-1,150.8	7,760.9	7,844.4	0.16	0.14	-0.07
16,892.0	90.31	90.16	7,384.0	-1,151.0	7,855.9	7,938.6	0.40	0.40	0.05
16,986.0	90.36	90.74	7,383.4	-1,151.7	7,949.9	8,031.9	0.62	0.05	0.62
17,080.0	89.89	89.91	7,383.2	-1,152.3	8,043.9	8,125.2	1.01	-0.50	-0.88
17,174.0	89.81	90.13	7,383.5	-1,152.3	8,137.9	8,218.4	0.25	-0.09	0.23
17,269.0	89.82	89.95	7,383.8	-1,152.4	8,232.9	8,312.7	0.19	0.01	-0.19
17,363.0	90.18	90.37	7,383.8	-1,152.6	8,326.9	8,405.9	0.59	0.38	0.45
17,457.0	89.94	89.97	7,383.7	-1,152.9	8,420.9	8,499.2	0.50	-0.26	-0.43
17,551.0	90.05	90.38	7,383.7	-1,153.2	8,514.8	8,592.4	0.45	0.12	0.44
17,645.0	90.18	90.26	7,383.5	-1,153.7	8,608.8	8,685.7	0.19	0.14	-0.13
17,740.0	90.20	89.77	7,383.2	-1,153.7	8,703.8	8,779.9	0.52	0.02	-0.52
17,834.0	89.82	89.99	7,383.2	-1,153.5	8,797.8	8,873.1	0.47	-0.40	0.23
17,928.0	90.09	90.02	7,383.2	-1,153.5	8,891.8	8,966.4	0.29	0.29	0.03
17,956.0	90.09	90.02	7,383.2	-1,153.6	8,919.8	8,994.1	0.00	0.00	0.00

BHL (1678' FSL, 466' FEL)

Formations

Measured Depth (ft)	Vertical Depth (ft)	Name	Lithology	Dip (°)	Dip Direction (°)
787.5	787.5	Fox Hills Aq Base			
3,898.5	3,741.5	Parkman			
4,490.9	4,288.5	Sussex			
5,187.2	4,932.5	Shannon			
7,299.1	6,907.5	Sharon Springs			
7,327.3	6,931.5	Niobrara A			
7,477.8	7,048.5	Niobrara B			
7,593.0	7,124.5	Niobrara C			
7,835.2	7,224.5	Fort Hays			
7,975.8	7,248.5	Codell			

Survey Annotations

Measured Depth (ft)	Vertical Depth (ft)	Local Coordinates		Comment
		+N/-S (ft)	+E/-W (ft)	
7,987.4	7,250.0	-1,177.4	-1,040.1	LP (1660' FSL, 150' FWL)
17,956.0	7,383.2	-1,153.6	8,919.8	BHL (1678' FSL, 466' FEL)