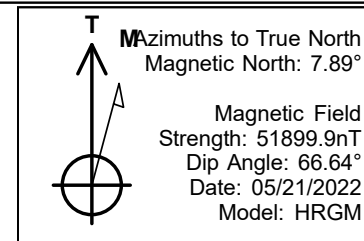


PDC Energy Inc. DJ Basin

Bost Farm 40N-8B-L2
 Bost Farms 5-7 Pad SEC.7-T5N-R66W
 North American Datum 1983 , US State Plane 1983, Colorado Northern Zone
 Ground Elevation: 4874.0
 +N/-S +E/-W Northing Easting Latitude Longitude Slot
 0.0 0.0 1394603.59 3187176.71 40.414641 -104.827785
 Patterson 272 - RKB 28'Well @ 4902.0ft (Patterson 272 - RKB 28')



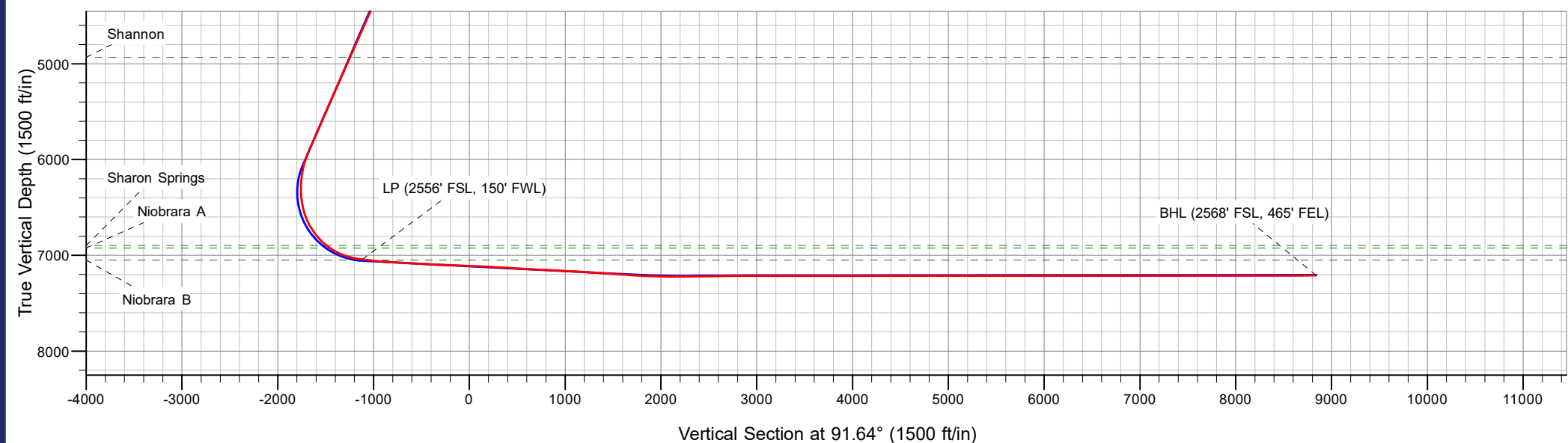
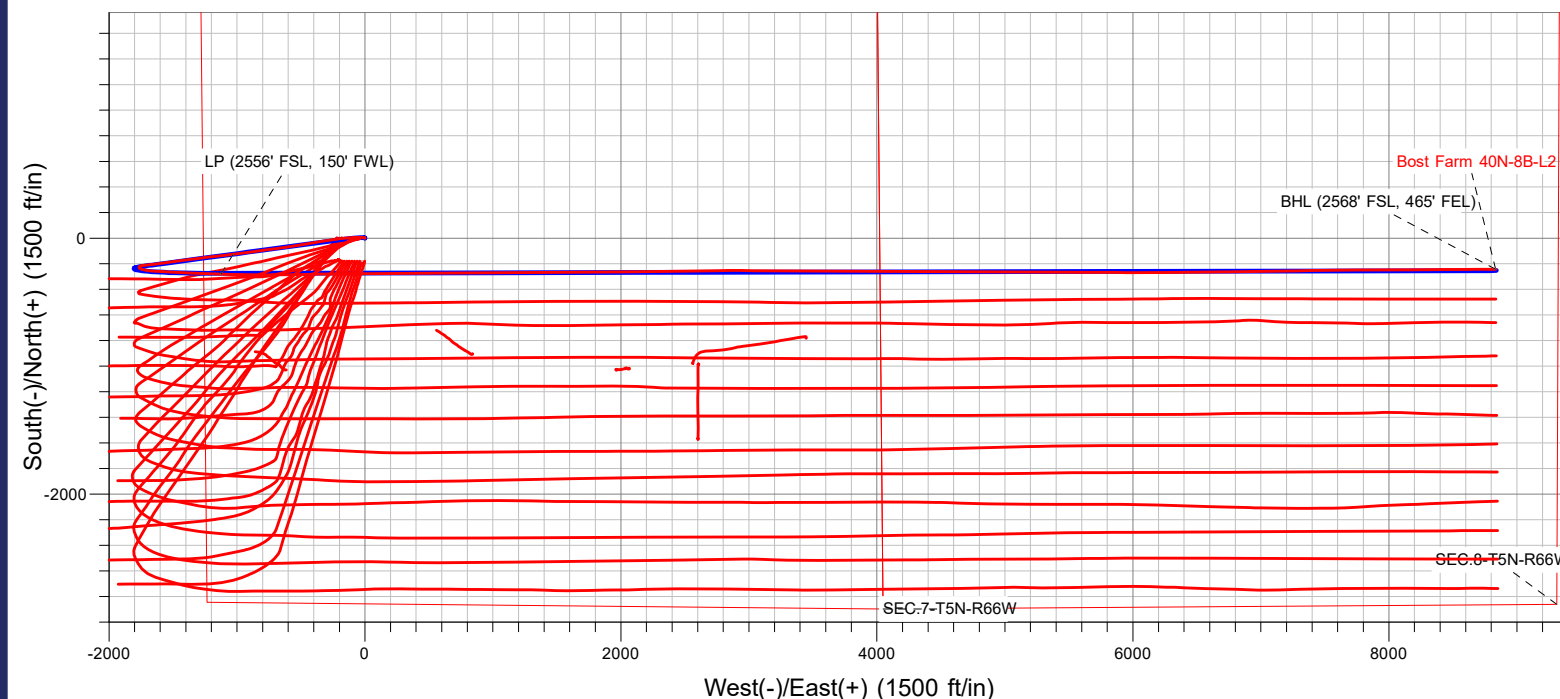
Bost Farms 5-7 Pad SEC.7-T5N-R66W
 Bost Farm 40N-8B-L2
 40N-8B-L2_Final Surveys
 15:36, June 13 2022



ANNOTATIONS

MD	TVD	Annotation
7737.1	7041.6	LP (2556' FSL, 150' FWL)
17702.0	7210.0	BHL (2568' FSL, 465' FEL)

FINAL SURVEY
Projected Bottom Hole Location
17702' MD / 7210' TVD
90.32° INC / 89.57° AZM
2568' FSL / 465' FEL





PDC Energy Inc. DJ Basin

SEC.7-T5N-R66W

Bost Farms 5-7 Pad SEC.7-T5N-R66W

Bost Farm 40N-8B-L2

Bost farm 40N-8B-L2 Wellbore #1

Design: 40N-8B-L2_Final Surveys

Standard Survey Report

13 June, 2022

Company:	PDC Energy Inc. DJ Basin	Local Co-ordinate Reference:	Well Bost Farm 40N-8B-L2
Project:	SEC.7-T5N-R66W	TVD Reference:	Well @ 4902.0ft (Patterson 272 - RKB 28')
Site:	Bost Farms 5-7 Pad SEC.7-T5N-R66W	MD Reference:	Well @ 4902.0ft (Patterson 272 - RKB 28')
Well:	Bost Farm 40N-8B-L2	North Reference:	True
Wellbore:	Bost farm 40N-8B-L2 Wellbore #1	Survey Calculation Method:	Minimum Curvature
Design:	40N-8B-L2_Final Surveys	Database:	US_EDM

Project	SEC.7-T5N-R66W, Weld County, Co		
Map System:	US State Plane 1983	System Datum:	Mean Sea Level
Geo Datum:	North American Datum 1983		
Map Zone:	Colorado Northern Zone		Using geodetic scale factor

Site	Bost Farms 5-7 Pad SEC.7-T5N-R66W				
Site Position:		Northing:	1,394,603.55 usft	Latitude:	40.414641
From:	Lat/Long	Easting:	3,187,178.01 usft	Longitude:	-104.827780
Position Uncertainty:	0.0 ft	Slot Radius:	13-3/16 "	Grid Convergence:	0.43 °

Well	Bost Farm 40N-8B-L2					
Well Position	+N/-S	0.0 ft	Northing:	1,394,603.60 usfl	Latitude:	40.414641
	+E/-W	0.0 ft	Easting:	3,187,176.71 usfl	Longitude:	-104.827785
Position Uncertainty		0.0 ft	Wellhead Elevation:	ft	Ground Level:	4,874.0 ft

Wellbore	Bost farm 40N-8B-L2 Wellbore #1				
Magnetics	Model Name	Sample Date	Declination (°)	Dip Angle (°)	Field Strength (nT)
	HRGM	05/21/2022	7.89	66.64	51,899.90775806

Design	40N-8B-L2_Final Surveys				
Audit Notes:					
Version:	1.0	Phase:	ACTUAL	Tie On Depth:	0.0
Vertical Section:	Depth From (TVD) (ft)	+N/-S (ft)	+E/-W (ft)	Direction (°)	
	0.0	0.0	0.0	91.64	

Survey Program	Date	06/13/2022			
From (ft)	To (ft)	Survey (Wellbore)	Tool Name	Description	
161.5	17,702.0	Surface (Bost farm 40N-8B-L2 Wellbore #	MWD	MWD - Standard	

Survey									
Measured Depth (ft)	Inclination (°)	Azimuth (°)	Vertical Depth (ft)	+N/-S (ft)	+E/-W (ft)	Vertical Section (ft)	Dogleg Rate (°/100usft)	Build Rate (°/100usft)	Turn Rate (°/100usft)
0.0	0.00	0.00	0.0	0.0	0.0	0.0	0.00	0.00	0.00
161.5	0.40	258.40	161.5	-0.1	-0.6	-0.5	0.25	0.25	0.00
252.5	0.20	277.00	252.5	-0.2	-1.0	-1.0	0.24	-0.22	20.44
344.5	0.40	281.10	344.5	-0.1	-1.5	-1.5	0.22	0.22	4.46
433.5	0.40	307.10	433.5	0.2	-2.0	-2.1	0.20	0.00	29.21
522.5	0.10	296.90	522.5	0.4	-2.4	-2.4	0.34	-0.34	-11.46
612.5	0.50	309.20	612.5	0.7	-2.7	-2.8	0.45	0.44	13.67
701.5	0.70	52.00	701.5	1.3	-2.6	-2.6	1.06	0.22	115.51
786.5	0.51	24.85	786.5	1.9	-2.0	-2.1	0.40	-0.23	-31.94
Fox Hills Aq Base									
791.5	0.50	22.70	791.5	2.0	-2.0	-2.1	0.40	-0.13	-43.07

Company:	PDC Energy Inc. DJ Basin	Local Co-ordinate Reference:	Well Bost Farm 40N-8B-L2
Project:	SEC.7-T5N-R66W	TVD Reference:	Well @ 4902.0ft (Patterson 272 - RKB 28')
Site:	Bost Farms 5-7 Pad SEC.7-T5N-R66W	MD Reference:	Well @ 4902.0ft (Patterson 272 - RKB 28')
Well:	Bost Farm 40N-8B-L2	North Reference:	True
Wellbore:	Bost farm 40N-8B-L2 Wellbore #1	Survey Calculation Method:	Minimum Curvature
Design:	40N-8B-L2_Final Surveys	Database:	US_EDM

Survey									
Measured Depth (ft)	Inclination (°)	Azimuth (°)	Vertical Depth (ft)	+N/-S (ft)	+E/-W (ft)	Vertical Section (ft)	Dogleg Rate (°/100usft)	Build Rate (°/100usft)	Turn Rate (°/100usft)
880.5	0.20	70.70	880.5	2.4	-1.7	-1.8	0.44	-0.34	53.93
970.5	0.20	125.00	970.5	2.3	-1.5	-1.5	0.20	0.00	60.33
1,059.5	0.60	321.50	1,059.5	2.6	-1.6	-1.7	0.89	0.45	-183.71
1,148.5	0.40	334.20	1,148.5	3.2	-2.0	-2.1	0.26	-0.22	14.27
1,237.5	0.60	320.60	1,237.5	3.9	-2.5	-2.6	0.26	0.22	-15.28
1,327.5	0.80	266.10	1,327.5	4.2	-3.4	-3.5	0.74	0.22	-60.56
1,416.5	2.20	264.60	1,416.4	4.0	-5.7	-5.8	1.57	1.57	-1.69
1,505.5	3.00	268.40	1,505.3	3.8	-9.7	-9.9	0.92	0.90	4.27
1,606.5	4.50	266.70	1,606.1	3.5	-16.3	-16.4	1.49	1.49	-1.68
1,779.0	7.18	275.33	1,777.7	4.1	-33.8	-33.9	1.63	1.55	5.00
1,873.0	8.84	280.66	1,870.8	6.0	-46.8	-46.9	1.93	1.77	5.67
1,968.0	10.89	268.04	1,964.4	7.0	-62.9	-63.1	3.12	2.16	-13.28
2,063.0	10.64	265.61	2,057.7	6.0	-80.6	-80.8	0.55	-0.26	-2.56
2,158.0	11.34	265.06	2,151.0	4.6	-98.7	-98.8	0.75	0.74	-0.58
2,252.0	11.72	263.75	2,243.1	2.7	-117.4	-117.4	0.49	0.40	-1.39
2,347.0	13.72	265.20	2,335.8	0.7	-138.2	-138.2	2.13	2.11	1.53
2,441.0	16.98	264.43	2,426.4	-1.5	-163.0	-162.9	3.47	3.47	-0.82
2,536.0	19.78	264.53	2,516.5	-4.4	-192.8	-192.6	2.95	2.95	0.11
2,630.0	22.59	263.33	2,604.2	-8.0	-226.6	-226.3	3.02	2.99	-1.28
2,721.0	23.34	260.67	2,688.0	-13.0	-261.7	-261.2	1.41	0.82	-2.92
2,816.0	24.78	259.71	2,774.7	-19.6	-299.9	-299.2	1.57	1.52	-1.01
2,911.0	25.17	260.71	2,860.8	-26.4	-339.4	-338.5	0.61	0.41	1.05
3,005.0	25.40	260.57	2,945.8	-32.9	-379.0	-377.9	0.25	0.24	-0.15
3,100.0	24.57	261.14	3,031.9	-39.3	-418.6	-417.3	0.91	-0.87	0.60
3,195.0	24.47	261.23	3,118.4	-45.4	-457.6	-456.1	0.11	-0.11	0.09
3,290.0	24.27	260.59	3,204.9	-51.5	-496.3	-494.6	0.35	-0.21	-0.67
3,385.0	24.07	261.17	3,291.6	-57.7	-534.7	-532.8	0.33	-0.21	0.61
3,480.0	23.72	261.17	3,378.4	-63.6	-572.7	-570.7	0.37	-0.37	0.00
3,574.0	23.03	260.51	3,464.7	-69.6	-609.6	-607.3	0.79	-0.73	-0.70
3,669.0	23.50	262.56	3,552.0	-75.1	-646.7	-644.2	0.99	0.49	2.16
3,764.0	23.01	260.97	3,639.3	-80.4	-683.8	-681.2	0.84	-0.52	-1.67
3,858.0	23.59	263.73	3,725.6	-85.4	-720.6	-717.9	1.31	0.62	2.94
3,874.3	23.54	263.50	3,740.5	-86.1	-727.1	-724.3	0.65	-0.30	-1.43
Parkman									
3,953.0	23.31	262.36	3,812.8	-89.9	-758.2	-755.3	0.65	-0.29	-1.44
4,047.0	23.32	262.23	3,899.1	-94.9	-795.0	-792.0	0.06	0.01	-0.14
4,142.0	23.79	262.39	3,986.2	-100.0	-832.6	-829.4	0.50	0.49	0.17
4,237.0	22.86	262.13	4,073.4	-105.1	-869.9	-866.5	0.98	-0.98	-0.27
4,331.0	22.38	261.40	4,160.2	-110.3	-905.7	-902.2	0.59	-0.51	-0.78
4,426.0	23.94	262.56	4,247.5	-115.5	-942.7	-939.0	1.71	1.64	1.22
4,469.8	24.27	262.50	4,287.5	-117.8	-960.4	-956.7	0.76	0.76	-0.13
Sussex									
4,521.0	24.66	262.44	4,334.1	-120.6	-981.5	-977.6	0.76	0.76	-0.12

Company:	PDC Energy Inc. DJ Basin	Local Co-ordinate Reference:	Well Bost Farm 40N-8B-L2
Project:	SEC.7-T5N-R66W	TVD Reference:	Well @ 4902.0ft (Patterson 272 - RKB 28')
Site:	Bost Farms 5-7 Pad SEC.7-T5N-R66W	MD Reference:	Well @ 4902.0ft (Patterson 272 - RKB 28')
Well:	Bost Farm 40N-8B-L2	North Reference:	True
Wellbore:	Bost farm 40N-8B-L2 Wellbore #1	Survey Calculation Method:	Minimum Curvature
Design:	40N-8B-L2_Final Surveys	Database:	US_EDM

Survey										
Measured Depth (ft)	Inclination (°)	Azimuth (°)	Vertical Depth (ft)	+N/-S (ft)	+E/-W (ft)	Vertical Section (ft)	Dogleg Rate (°/100usft)	Build Rate (°/100usft)	Turn Rate (°/100usft)	
4,616.0	24.93	264.21	4,420.3	-125.2	-1,021.0	-1,017.0	0.83	0.28	1.86	
4,710.0	24.05	263.01	4,505.9	-129.5	-1,059.7	-1,055.6	1.08	-0.94	-1.28	
4,805.0	24.52	262.55	4,592.5	-134.4	-1,098.5	-1,094.2	0.53	0.49	-0.48	
4,900.0	24.43	263.76	4,678.9	-139.1	-1,137.6	-1,133.1	0.54	-0.09	1.27	
4,995.0	24.05	264.95	4,765.6	-143.0	-1,176.4	-1,171.8	0.65	-0.40	1.25	
5,089.0	24.75	263.05	4,851.2	-147.0	-1,215.0	-1,210.3	1.12	0.74	-2.02	
5,177.2	23.87	262.41	4,931.5	-151.6	-1,251.0	-1,246.1	1.04	-1.00	-0.72	
Shannon										
5,184.0	23.80	262.36	4,937.8	-152.0	-1,253.7	-1,248.9	1.04	-1.00	-0.75	
5,279.0	22.80	262.69	5,025.0	-156.9	-1,291.0	-1,286.0	1.06	-1.05	0.35	
5,373.0	24.63	263.16	5,111.1	-161.5	-1,328.5	-1,323.3	1.96	1.95	0.50	
5,468.0	24.93	262.88	5,197.3	-166.4	-1,368.0	-1,362.7	0.34	0.32	-0.29	
5,563.0	23.47	261.86	5,284.0	-171.5	-1,406.6	-1,401.1	1.60	-1.54	-1.07	
5,657.0	24.14	262.77	5,370.0	-176.6	-1,444.2	-1,438.6	0.81	0.71	0.97	
5,752.0	23.35	261.53	5,456.9	-181.8	-1,482.1	-1,476.3	0.98	-0.83	-1.31	
5,847.0	23.98	262.69	5,543.9	-187.0	-1,519.9	-1,513.9	0.82	0.66	1.22	
5,941.0	24.24	262.28	5,629.7	-192.1	-1,558.0	-1,551.8	0.33	0.28	-0.44	
6,036.0	23.10	263.36	5,716.8	-196.8	-1,595.8	-1,589.5	1.28	-1.20	1.14	
6,131.0	24.95	262.92	5,803.5	-201.5	-1,634.2	-1,627.8	1.96	1.95	-0.46	
6,226.0	24.24	263.46	5,889.9	-206.2	-1,673.5	-1,666.9	0.78	-0.75	0.57	
6,321.0	20.21	262.57	5,977.8	-210.5	-1,709.1	-1,702.4	4.26	-4.24	-0.94	
6,415.0	14.01	261.93	6,067.6	-214.2	-1,736.5	-1,729.7	6.60	-6.60	-0.68	
6,510.0	7.90	253.84	6,160.9	-217.6	-1,754.2	-1,747.2	6.62	-6.43	-8.52	
6,605.0	6.09	219.04	6,255.2	-223.4	-1,763.6	-1,756.5	4.76	-1.91	-36.63	
6,699.0	6.29	162.58	6,348.7	-232.2	-1,765.2	-1,757.9	6.22	0.21	-60.06	
6,794.0	9.53	104.92	6,442.9	-239.2	-1,756.1	-1,748.5	8.55	3.41	-60.69	
6,889.0	15.40	106.97	6,535.7	-244.9	-1,736.4	-1,728.7	6.20	6.18	2.16	
6,983.0	23.62	101.08	6,624.2	-252.2	-1,705.9	-1,698.0	8.98	8.74	-6.27	
7,078.0	31.53	94.78	6,708.3	-257.9	-1,662.4	-1,654.3	8.86	8.33	-6.63	
7,172.0	36.66	90.78	6,786.2	-260.3	-1,609.8	-1,601.7	5.95	5.46	-4.26	
7,267.0	47.06	93.68	6,856.8	-262.9	-1,546.6	-1,538.4	11.13	10.95	3.05	
7,326.5	51.86	93.92	6,895.5	-265.9	-1,501.5	-1,493.2	8.08	8.07	0.41	
Sharon Springs										
7,361.0	54.65	94.05	6,916.1	-267.9	-1,473.9	-1,465.6	8.08	8.07	0.37	
7,373.9	55.58	93.68	6,923.5	-268.6	-1,463.3	-1,455.0	7.60	7.23	-2.87	
Niobrara A										
7,456.0	61.54	91.50	6,966.3	-271.7	-1,393.4	-1,385.0	7.60	7.26	-2.66	
7,551.0	70.66	90.85	7,004.8	-273.5	-1,306.6	-1,298.3	9.62	9.60	-0.68	
7,645.0	80.49	93.29	7,028.2	-276.8	-1,215.8	-1,207.4	10.75	10.46	2.60	
7,737.1	82.70	92.03	7,041.6	-281.0	-1,124.8	-1,116.3	2.76	2.40	-1.37	
LP (2556' FSL, 150' FWL)										
7,740.0	82.77	91.99	7,042.0	-281.1	-1,121.9	-1,113.4	2.76	2.40	-1.36	
7,791.4	82.66	91.84	7,048.5	-282.8	-1,071.0	-1,062.4	0.35	-0.21	-0.28	
Niobrara B										

Company:	PDC Energy Inc. DJ Basin	Local Co-ordinate Reference:	Well Bost Farm 40N-8B-L2
Project:	SEC.7-T5N-R66W	TVD Reference:	Well @ 4902.0ft (Patterson 272 - RKB 28')
Site:	Bost Farms 5-7 Pad SEC.7-T5N-R66W	MD Reference:	Well @ 4902.0ft (Patterson 272 - RKB 28')
Well:	Bost Farm 40N-8B-L2	North Reference:	True
Wellbore:	Bost farm 40N-8B-L2 Wellbore #1	Survey Calculation Method:	Minimum Curvature
Design:	40N-8B-L2_Final Surveys	Database:	US_EDM

Survey

Measured Depth (ft)	Inclination (°)	Azimuth (°)	Vertical Depth (ft)	+N/-S (ft)	+E/-W (ft)	Vertical Section (ft)	Dogleg Rate (°/100usft)	Build Rate (°/100usft)	Turn Rate (°/100usft)
7,835.0	82.57	91.72	7,054.1	-284.2	-1,027.7	-1,019.2	0.35	-0.21	-0.28
7,929.0	85.83	91.53	7,063.6	-286.8	-934.3	-925.7	3.47	3.47	-0.20
8,024.0	85.63	89.71	7,070.7	-287.8	-839.5	-830.9	1.92	-0.21	-1.92
8,119.0	86.90	89.35	7,076.9	-287.1	-744.7	-736.2	1.39	1.34	-0.38
8,213.0	86.65	89.14	7,082.2	-285.8	-650.9	-642.4	0.35	-0.27	-0.22
8,308.0	87.18	89.17	7,087.3	-284.4	-556.1	-547.7	0.56	0.56	0.03
8,403.0	87.11	88.85	7,092.0	-282.8	-461.2	-452.9	0.34	-0.07	-0.34
8,497.0	86.55	89.14	7,097.2	-281.1	-367.3	-359.1	0.67	-0.60	0.31
8,592.0	88.24	89.09	7,101.5	-279.7	-272.5	-264.3	1.78	1.78	-0.05
8,687.0	88.43	89.91	7,104.3	-278.9	-177.5	-169.4	0.89	0.20	0.86
8,782.0	88.09	88.99	7,107.2	-277.9	-82.6	-74.5	1.03	-0.36	-0.97
8,971.0	86.97	89.84	7,115.3	-276.0	106.3	114.1	0.74	-0.59	0.45
9,066.0	86.86	89.64	7,120.4	-275.6	201.1	208.9	0.24	-0.12	-0.21
9,160.0	86.80	89.60	7,125.6	-275.0	295.0	302.7	0.08	-0.06	-0.04
9,255.0	86.71	89.73	7,131.0	-274.4	389.8	397.5	0.17	-0.09	0.14
9,350.0	86.96	89.53	7,136.2	-273.8	484.7	492.3	0.34	0.26	-0.21
9,444.0	86.58	89.99	7,141.5	-273.4	578.5	586.1	0.63	-0.40	0.49
9,539.0	87.53	89.50	7,146.4	-273.0	673.4	680.9	1.12	1.00	-0.52
9,634.0	86.94	89.75	7,151.0	-272.4	768.3	775.8	0.67	-0.62	0.26
9,728.0	87.37	89.52	7,155.7	-271.8	862.2	869.6	0.52	0.46	-0.24
9,822.0	86.61	89.73	7,160.6	-271.1	956.0	963.4	0.84	-0.81	0.22
9,916.0	86.57	89.60	7,166.2	-270.6	1,049.9	1,057.2	0.14	-0.04	-0.14
10,011.0	87.07	89.67	7,171.5	-270.0	1,144.7	1,152.0	0.53	0.53	0.07
10,105.0	86.27	89.75	7,176.9	-269.5	1,238.6	1,245.8	0.86	-0.85	0.09
10,199.0	86.01	89.89	7,183.2	-269.2	1,332.3	1,339.5	0.31	-0.28	0.15
10,293.0	86.10	89.77	7,189.7	-268.9	1,426.1	1,433.2	0.16	0.10	-0.13
10,387.0	86.26	89.45	7,196.0	-268.3	1,519.9	1,527.0	0.38	0.17	-0.34
10,481.0	86.17	89.29	7,202.2	-267.3	1,613.7	1,620.7	0.19	-0.10	-0.17
10,575.0	86.20	89.67	7,208.4	-266.4	1,707.5	1,714.4	0.40	0.03	0.40
10,670.0	86.44	89.57	7,214.5	-265.8	1,802.3	1,809.2	0.27	0.25	-0.11
10,764.0	88.15	88.93	7,219.0	-264.6	1,896.2	1,903.0	1.94	1.82	-0.68
10,858.0	89.80	89.29	7,220.7	-263.1	1,990.1	1,996.9	1.80	1.76	0.38
10,953.0	90.08	89.10	7,220.8	-261.8	2,085.1	2,091.8	0.36	0.29	-0.20
11,048.0	90.16	89.31	7,220.6	-260.4	2,180.1	2,186.7	0.24	0.08	0.22
11,142.0	90.58	89.69	7,219.9	-259.6	2,274.1	2,280.6	0.60	0.45	0.40
11,237.0	90.47	89.46	7,219.1	-258.9	2,369.1	2,375.6	0.27	-0.12	-0.24
11,331.0	90.33	89.28	7,218.4	-257.9	2,463.1	2,469.5	0.24	-0.15	-0.19
11,426.0	90.60	89.37	7,217.6	-256.8	2,558.1	2,564.4	0.30	0.28	0.09
11,520.0	90.53	89.17	7,216.7	-255.6	2,652.1	2,658.3	0.23	-0.07	-0.21
11,614.0	90.74	88.94	7,215.7	-254.0	2,746.1	2,752.2	0.33	0.22	-0.24
11,708.0	90.46	89.57	7,214.7	-252.8	2,840.0	2,846.1	0.73	-0.30	0.67
11,802.0	89.61	90.74	7,214.6	-253.1	2,934.0	2,940.1	1.54	-0.90	1.24
11,897.0	90.14	90.46	7,214.8	-254.1	3,029.0	3,035.1	0.63	0.56	-0.29
11,990.0	90.07	90.43	7,214.7	-254.8	3,122.0	3,128.1	0.08	-0.08	-0.03

Company:	PDC Energy Inc. DJ Basin	Local Co-ordinate Reference:	Well Bost Farm 40N-8B-L2
Project:	SEC.7-T5N-R66W	TVD Reference:	Well @ 4902.0ft (Patterson 272 - RKB 28')
Site:	Bost Farms 5-7 Pad SEC.7-T5N-R66W	MD Reference:	Well @ 4902.0ft (Patterson 272 - RKB 28')
Well:	Bost Farm 40N-8B-L2	North Reference:	True
Wellbore:	Bost farm 40N-8B-L2 Wellbore #1	Survey Calculation Method:	Minimum Curvature
Design:	40N-8B-L2_Final Surveys	Database:	US_EDM

Survey

Measured Depth (ft)	Inclination (°)	Azimuth (°)	Vertical Depth (ft)	+N/-S (ft)	+E/-W (ft)	Vertical Section (ft)	Dogleg Rate (°/100usft)	Build Rate (°/100usft)	Turn Rate (°/100usft)
12,085.0	89.96	90.36	7,214.7	-255.4	3,217.0	3,223.0	0.14	-0.12	-0.07
12,179.0	90.33	90.18	7,214.4	-255.9	3,311.0	3,317.0	0.44	0.39	-0.19
12,273.0	89.66	90.49	7,214.4	-256.4	3,405.0	3,411.0	0.79	-0.71	0.33
12,367.0	90.10	90.25	7,214.6	-257.0	3,499.0	3,505.0	0.53	0.47	-0.26
12,460.0	89.60	90.67	7,214.9	-257.8	3,592.0	3,597.9	0.70	-0.54	0.45
12,554.0	90.07	90.63	7,215.1	-258.8	3,686.0	3,691.9	0.50	0.50	-0.04
12,648.0	90.18	90.18	7,214.9	-259.5	3,780.0	3,785.9	0.49	0.12	-0.48
12,743.0	90.22	90.17	7,214.6	-259.8	3,875.0	3,880.9	0.04	0.04	-0.01
12,837.0	90.07	90.15	7,214.4	-260.1	3,969.0	3,974.8	0.16	-0.16	-0.02
12,931.0	90.02	90.03	7,214.3	-260.2	4,063.0	4,068.8	0.14	-0.05	-0.13
13,025.0	89.99	89.73	7,214.3	-260.0	4,157.0	4,162.8	0.32	-0.03	-0.32
13,120.0	89.97	90.21	7,214.3	-260.0	4,252.0	4,257.7	0.51	-0.02	0.51
13,214.0	90.19	90.29	7,214.2	-260.4	4,346.0	4,351.7	0.25	0.23	0.09
13,308.0	90.17	90.26	7,213.9	-260.8	4,440.0	4,445.7	0.04	-0.02	-0.03
13,403.0	90.09	90.34	7,213.7	-261.3	4,535.0	4,540.6	0.12	-0.08	0.08
13,497.0	90.35	90.25	7,213.3	-261.8	4,629.0	4,634.6	0.29	0.28	-0.10
13,592.0	90.35	90.41	7,212.7	-262.3	4,724.0	4,729.6	0.17	0.00	0.17
13,686.0	89.79	90.57	7,212.6	-263.2	4,818.0	4,823.6	0.62	-0.60	0.17
13,780.0	89.69	90.62	7,213.0	-264.1	4,912.0	4,917.5	0.12	-0.11	0.05
13,874.0	90.11	89.39	7,213.2	-264.1	5,006.0	5,011.5	1.38	0.45	-1.31
13,969.0	90.30	90.31	7,212.9	-263.9	5,101.0	5,106.5	0.99	0.20	0.97
14,063.0	89.83	90.49	7,212.8	-264.5	5,195.0	5,200.4	0.54	-0.50	0.19
14,158.0	89.94	90.30	7,212.9	-265.2	5,290.0	5,295.4	0.23	0.12	-0.20
14,253.0	90.15	89.99	7,212.9	-265.4	5,385.0	5,390.4	0.39	0.22	-0.33
14,347.0	90.16	90.96	7,212.6	-266.2	5,479.0	5,484.4	1.03	0.01	1.03
14,441.0	90.09	90.22	7,212.4	-267.2	5,573.0	5,578.3	0.79	-0.07	-0.79
14,535.0	90.36	90.17	7,212.0	-267.5	5,667.0	5,672.3	0.29	0.29	-0.05
14,630.0	89.76	90.22	7,211.9	-267.8	5,762.0	5,767.3	0.63	-0.63	0.05
14,724.0	89.58	90.45	7,212.5	-268.4	5,856.0	5,861.3	0.31	-0.19	0.24
14,818.0	90.18	90.52	7,212.7	-269.2	5,950.0	5,955.2	0.64	0.64	0.07
14,912.0	89.61	90.24	7,212.9	-269.8	6,044.0	6,049.2	0.68	-0.61	-0.30
15,006.0	89.84	89.60	7,213.3	-269.7	6,138.0	6,143.2	0.72	0.24	-0.68
15,100.0	90.06	89.15	7,213.4	-268.6	6,231.9	6,237.1	0.53	0.23	-0.48
15,194.0	90.09	89.29	7,213.3	-267.4	6,325.9	6,331.0	0.15	0.03	0.15
15,289.0	90.02	89.44	7,213.2	-266.3	6,420.9	6,425.9	0.17	-0.07	0.16
15,382.0	90.14	89.32	7,213.0	-265.3	6,513.9	6,518.9	0.18	0.13	-0.13
15,477.0	90.03	89.63	7,212.9	-264.4	6,608.9	6,613.8	0.35	-0.12	0.33
15,571.0	89.52	89.48	7,213.3	-263.7	6,702.9	6,707.7	0.57	-0.54	-0.16
15,665.0	90.25	89.19	7,213.5	-262.6	6,796.9	6,801.6	0.84	0.78	-0.31
15,759.0	90.45	89.04	7,212.9	-261.2	6,890.9	6,895.6	0.27	0.21	-0.16
15,853.0	90.18	88.96	7,212.4	-259.5	6,984.9	6,989.5	0.30	-0.29	-0.09
15,947.0	89.90	89.29	7,212.3	-258.1	7,078.9	7,083.4	0.46	-0.30	0.35
16,041.0	89.89	89.14	7,212.5	-256.8	7,172.9	7,177.3	0.16	-0.01	-0.16

Company:	PDC Energy Inc. DJ Basin	Local Co-ordinate Reference:	Well Bost Farm 40N-8B-L2
Project:	SEC.7-T5N-R66W	TVD Reference:	Well @ 4902.0ft (Patterson 272 - RKB 28')
Site:	Bost Farms 5-7 Pad SEC.7-T5N-R66W	MD Reference:	Well @ 4902.0ft (Patterson 272 - RKB 28')
Well:	Bost Farm 40N-8B-L2	North Reference:	True
Wellbore:	Bost farm 40N-8B-L2 Wellbore #1	Survey Calculation Method:	Minimum Curvature
Design:	40N-8B-L2_Final Surveys	Database:	US_EDM

Survey

Measured Depth (ft)	Inclination (°)	Azimuth (°)	Vertical Depth (ft)	+N/-S (ft)	+E/-W (ft)	Vertical Section (ft)	Dogleg Rate (°/100usft)	Build Rate (°/100usft)	Turn Rate (°/100usft)
16,136.0	89.96	89.07	7,212.6	-255.3	7,267.9	7,272.2	0.10	0.07	-0.07
16,229.0	89.97	89.24	7,212.7	-253.9	7,360.8	7,365.1	0.18	0.01	0.18
16,323.0	89.98	89.14	7,212.7	-252.6	7,454.8	7,459.0	0.11	0.01	-0.11
16,418.0	89.98	89.22	7,212.7	-251.3	7,549.8	7,553.9	0.08	0.00	0.08
16,512.0	90.04	89.15	7,212.7	-249.9	7,643.8	7,647.8	0.10	0.06	-0.07
16,606.0	90.30	89.24	7,212.4	-248.6	7,737.8	7,741.8	0.29	0.28	0.10
16,699.0	90.08	89.94	7,212.1	-247.9	7,830.8	7,834.7	0.79	-0.24	0.75
16,793.0	90.25	89.67	7,211.9	-247.6	7,924.8	7,928.6	0.34	0.18	-0.29
16,888.0	90.12	89.94	7,211.5	-247.3	8,019.8	8,023.6	0.32	-0.14	0.28
16,982.0	89.88	89.92	7,211.5	-247.2	8,113.8	8,117.5	0.26	-0.26	-0.02
17,076.0	90.04	89.76	7,211.6	-246.9	8,207.8	8,211.5	0.24	0.17	-0.17
17,170.0	90.21	89.72	7,211.4	-246.5	8,301.8	8,305.5	0.19	0.18	-0.04
17,265.0	89.97	89.89	7,211.3	-246.2	8,396.8	8,400.4	0.31	-0.25	0.18
17,359.0	90.12	89.43	7,211.2	-245.6	8,490.8	8,494.3	0.51	0.16	-0.49
17,453.0	90.09	89.84	7,211.0	-245.0	8,584.8	8,588.3	0.44	-0.03	0.44
17,547.0	90.22	89.54	7,210.8	-244.5	8,678.8	8,682.2	0.35	0.14	-0.32
17,641.0	90.32	89.57	7,210.3	-243.8	8,772.8	8,776.2	0.11	0.11	0.03
17,702.0	90.32	89.57	7,210.0	-243.3	8,833.8	8,837.1	0.00	0.00	0.00
BHL (2568' FSL, 465' FEL)									

Formations

Measured Depth (ft)	Vertical Depth (ft)	Name	Lithology	Dip (°)	Dip Direction (°)
786.5	786.5	Fox Hills Aq Base			
3,874.3	3,740.5	Parkman			
4,469.8	4,287.5	Sussex			
5,177.2	4,931.5	Shannon			
7,326.5	6,895.5	Sharon Springs			
7,373.9	6,923.5	Niobrara A			
7,791.4	7,048.5	Niobrara B			

Design Annotations

	Measured Depth (ft)	Vertical Depth (ft)	Local Coordinates		Comment
			+N/-S (ft)	+E/-W (ft)	
	7,737.1	7,041.6	-281.0	-1,124.8	LP (2556' FSL, 150' FWL)
	17,702.0	7,210.0	-243.3	8,833.8	BHL (2568' FSL, 465' FEL)