

# Cement Post Job Report

**Client:** PDC Energy

**Well Name:** Bost Farm 40N-8B-L2

**API #:** 05-123-51449-00

**Job Date:** May 26, 2022

**Job Type:** New Well - 5.5" Production String

**Cement Company & Contact:** EXERO Well Integrity -  
Cheve Meyer 720-239-3819



ROCK SOLID  
WELL INTEGRITY  
SOLUTIONS

## TREATMENT REPORT

Client	Well	Rig	Date	Job Type				
PDC Energy	Bost Farm 40N-8B-L2	Patterson 272	5/26/2022	Production				
Connection Type	Thread Type	Number of Stages	BHST Deg	BHCT Deg				
5 1/2" HP Cement Head	Buttress	1	255	195				
Well MD (ft)	Well TVD (ft)	Deg Dev.	Max-Cas/DP PSI	Max Ann. PSI				
17702	7210	90	8000	2000				
Packer/Retainer/CIBP/DV Tool Depths		Top of Perfs	Bottom of Perfs	Number of Holes				
String	Casing/Tubing Type	OD	Wt/ft	ID	OH Size	% XS Lead	% XS Tail	Depth (ft)
Surface	Casing	9.625	36					1658
Production	Casing	5.5	20	4.778	8.5	0	0	17688

### PRE-JOB MUD AND WELL CONDITIONS

Mud Type	OBM	Pipe Rotation		Circulation Data				Water Requirements (bbls)	
Mud wt. ppg	10.5	Rotate Y,N	No	Circulate Time (hrs)	3			Spacers	140
Flow Temp		Rate		Circulation Rate (bpm)	10.5			Stage 1 Lead	118
Vis. Sec/qt		Torque Val.		Full Circ?	Full			Stage 1 Tail	239
PV (cP)		Time		Gas Present (Y,N)	YES	Units	5000	Stage 2 Lead	0
Yield Pt		Pipe Reciprocation		Centralizers/Plugs				Stage 2 Tail	0
10 sec gel		Recip Y,N	No	Quantity & Type	2 BOTTOM, 1 TOP			Displacement	392
10 min gel		Stroke (ft)		Top Plug/Type	operator provided			Wash up	20
30 min gel		Recip time		Bottom Plug/Type/Burst p	operator provided			Total + 10% Safety	1000

### PRE-JOB CALCULATED MATERIALS, VOLUMES, & RATES

Prelush & Spacers		Stage 1 Lead: Class G		Stage 1 Tail: Class G		Stage 2 Lead: NA		Stage 2 Tail: NA		Displacement	
Spacer 1	Spacer	Density	12.9	Density	13.7	Density		Density		Fluid Type	Water
Density	12	Sacks	1276	Sacks	1511	Sacks		Sacks		Dens. ppg	8.33
Volume	140	Vol/bbls	256.8	Vol/bbls	368.7	Vol/bbls	0.0	Vol/bbls	0.0	Vol. bbl	392
Rate	10	Rate	11	Rate	11	Rate		Rate		Rate bpm	11
Spacer 2		Yield	1.13	Yield	1.37	Yield		Yield		Clay Stay?	No
Density		Gal/Sk	3.90	Gal/Sk	6.63	Gal/Sk		Gal/Sk		Biocide ?	No
Volume		% Excess	0	% Excess	0	% Excess		% Excess		Slow @ bbl	370
Rate		TOL (ft)	2348'	TOT (ft)	8647'	TOL (ft)		TOT (ft)		Bump PSI	3000

### POST JOB DETAILS, FINAL VOLUMES & PRESSURES

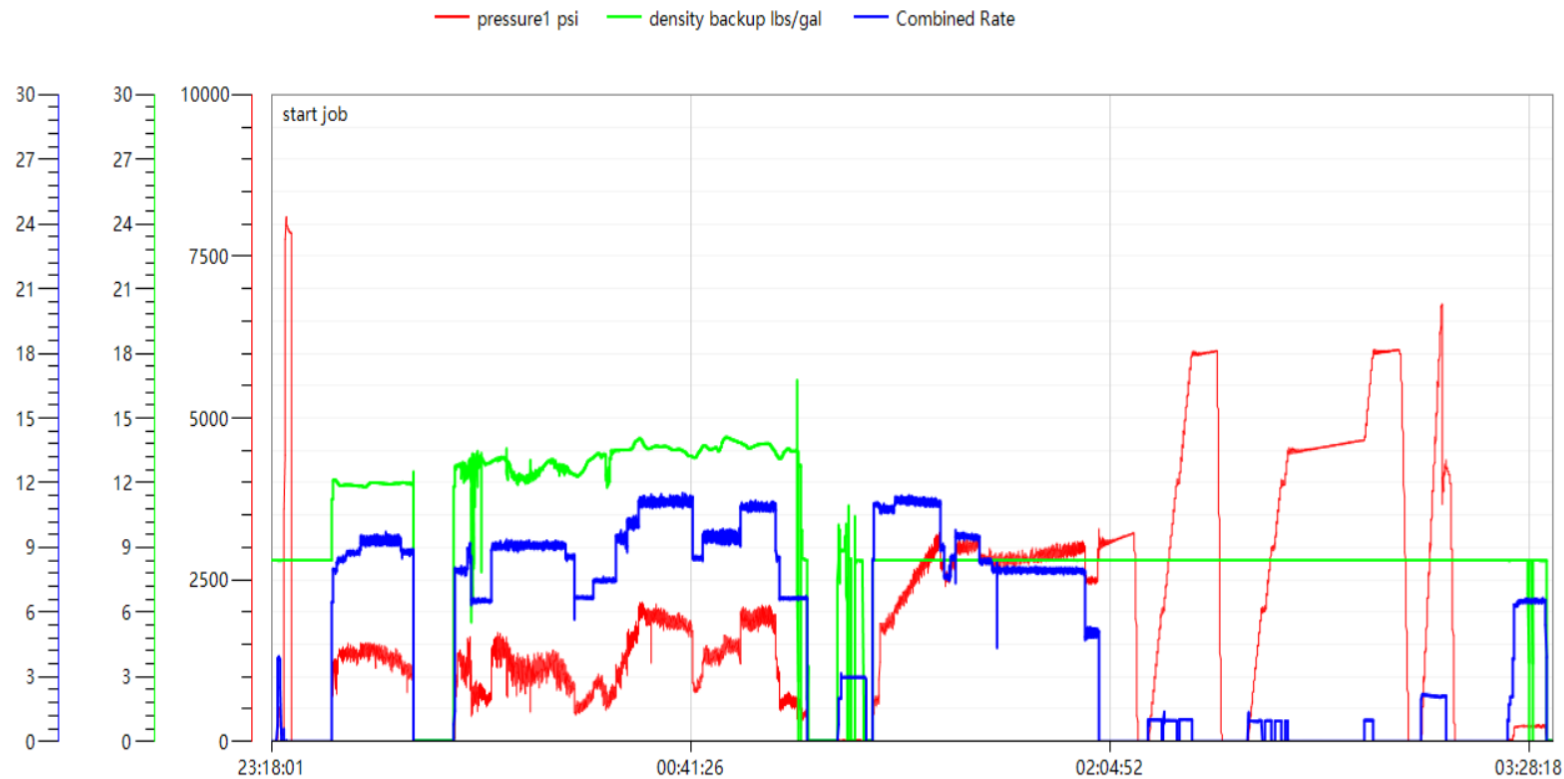
Final Displacement (bbls)	392			Top out cement type	NA
Bump Plug?	Yes			Density	NA
Final Bump Pressure (psi)	3000			Sack Quantity	NA
Full Returns throughout job?	Full			Mix water requirement (gal/sk)	NA
Vol away/Time when returns lost	NA			Yield	NA
Vol away/Time When returns regained	NA			Summary of Additives Used on Job	
Spacer to Surface?	NO			Surfactants (gal)	220
Spacer volume returned	0			Clay Stabilizer (gal)	0
Cement to surface?	NO			Biocide (gal)	15
Cement volume to surface stage 1 (bbls)	NA	Stg 2	NA	Corrosion Inhibitor (gal)	0
Surface top out?	No			Defoamer (gal)	60
Top out volume pumped (bbls)	0			PhenoSeal (LCM lbs)	N0
				Fiber (LCM lbs)	290

### Job Treatment Log

Client				Well			Exero Supervisor
PDC Energy				Bost Farm 40N-8B-L2			Cooper Hone 970-712-9636
Ambient Conditions ( Temperature / Humidity / Air Pressure )							61 Deg F / 54% / 25.00 in
Date DD/MM	Time HH:MM	Density (ppg)	Rate (bpm)	Vol. (bbl)	Total Vol. (bbl)	Pressure (psi)	Treatment Comments
5/26/22	5:00 PM						Arrive on location , requested time on location 1800
5/26/22	7:00 PM						Spot equipment and rig up
5/26/22	8:00 PM						Wait for rig to circulate well to condition
5/26/22	11:00 PM						Safety meeting with the rig crew
5/26/22	11:15 PM						Rig up the floor
5/26/22	11:26 PM	8.33	4.00	3.0	3.0	120	Fill lines
5/26/22	11:28 PM					8038	pressure test
5/26/22	11:37 PM						drop bottom plug #1
5/26/22	11:38 PM	12.00	9.00	140.0	140.0	1450	Pump spacer @ 12.0# , with surfactants and fiber
5/26/22	11:57 PM						Drop bottom plug 2
5/27/22	12:02 AM	12.90	9.00	257.0	257.0	1200	Mix and pump 257 BBLS Lead @ 12.9# , 1.13 cuft/sk and 3.90 gals/sk , Top of Lead @ 2352'
5/27/22	12:35 AM	13.70	11.00	369.0	369.0	1000	Mix and pump 369 BBLS Tail @ 13.7# , 1.37 cuft/sk and 6.63 gals/sk , Top of Tail @ 8627'
5/27/22	1:11 AM	8.33	8.00	8.0	8.0	1000	Pump sugar water
5/27/22	1:13 AM						Shut down and wash pumps and lines
5/27/22	1:17 AM						Drop plug
5/27/22	1:24 AM						Start water displacement , sugar in the 1st 10 and biocide in all
5/27/22	1:31 AM	8.33	11.00	50.0	392.0	2150	Water displacement
5/27/22	1:35 AM	8.33	11.00	100.0	392.0	2700	Water displacement
5/27/22	1:40 AM	8.33	11.00	150.0	392.0	2850	Water displacement
5/27/22	1:46 AM	8.33	10.00	200.0	392.0	3000	Water displacement
5/27/22	1:52 AM	8.33	8.00	250.0	392.0	2800	Water displacement
5/27/22	1:59 AM	8.33	8.00	300.0	392.0	3000	Water displacement
5/27/22	2:05 AM	8.33	8.00	350.0	392.0	3000	Water displacement
5/27/22	2:03 AM	8.33	5.00	370.0	392.0	2500	water displacement slowed to bump plug
5/27/22	2:11 AM	8.33	5.00	392.0	392.0	3000	BUMPED PLUG ON CALCULATED DISPLACEMENT RECEIVED 0 BBLS TO SURFACE TOOK PRESSURE
5/27/22	2:15 AM						checked floats. Got 4 bbls back, FLOATS ARE HOLDING
5/27/22	2:20 AM						turned over to tool hand to set packer
5/27/22	3:19 AM					6800	pressured up to open wet shoe sub. Opened at 6800 PSI
5/27/22	3:19 AM	8.33	2.00	2.0	2.0	0	pumped 2 bbl wet shoe
5/27/22	3:24 AM						released pressure got 4 bbls back
5/27/22	3:30 AM						rigged up to flush stack and commenced rig down
5/27/22	4:30 AM						crew departed from location

Bost Farm 40N-8B-L2 Pump Chart – Pressure / Rate / Density

Chart Report



Date:5/26/22 wellname:PDC BOST FARM 40N-8B-L2 Location:GREELEY Country:USA Operators:CODY Supervisor:COOPER HONE Jobtype:PRODUCTION Address: Comment:



## Centralizer Depths

Well Name: Bost Farm 40N-8B-L2

Production, Set Depth: 17,688.0ftKB

API 05123514490000		Surface Legal Location SWNW 7 5N 66W		Field Name Wattenberg		State CO		Well Configuration Type Horizontal	
Ground Elevation (ft) 4,874.00		Original KB Elevation (ft) 4,902.00		KB-Ground Distance (ft) 28.00		Spud Date 5/22/2022 17:30		Rig Release Date 5/27/2022 15:00	
						On Production Date		Abandon Date	

### Casing Run Tally

Run #	Ref #	Item Des	OD (in)	Wt (lb/ft)	Grade	Run?	Len (ft)	Centralized?	Ext Jw/ry	Connections	Top (ftKB)	Cum Len (ft)
7	1	Casing Joints	5 1/2	20.00	P-110	Yes	43.84	Yes			17,605.6	82.37
9	3	Casing Joints	5 1/2	20.00	P-110	Yes	40.97	Yes			17,520.9	167.06
11	5	Casing Joints	5 1/2	20.00	P-110	Yes	43.71	Yes			17,433.4	254.61
13	7	Casing Joints	5 1/2	20.00	P-110	Yes	43.95	Yes			17,348.6	339.37
15	9	Casing Joints	5 1/2	20.00	P-110	Yes	43.78	Yes			17,260.9	427.08
17		Marker Joint A	5 1/2	20.00	P-110	Yes	11.76	Yes			17,208.1	479.86
19	12	Casing Joints	5 1/2	20.00	P-110	Yes	43.77	Yes			17,120.6	567.36
21	14	Casing Joints	5 1/2	20.00	P-110	Yes	43.87	Yes			17,033.1	654.95
23	16	Casing Joints	5 1/2	20.00	P-110	Yes	42.01	Yes			16,947.2	740.76
25	18	Casing Joints	5 1/2	20.00	P-110	Yes	43.88	Yes			16,859.6	828.39
27	20	Casing Joints	5 1/2	20.00	P-110	Yes	38.57	Yes			16,782.6	905.38
29	22	Casing Joints	5 1/2	20.00	P-110	Yes	40.42	Yes			16,698.3	989.67
31	24	Casing Joints	5 1/2	20.00	P-110	Yes	42.03	Yes			16,612.4	1,075.65
33	26	Casing Joints	5 1/2	20.00	P-110	Yes	37.37	Yes			16,531.2	1,156.81
35	28	Casing Joints	5 1/2	20.00	P-110	Yes	41.05	Yes			16,446.6	1,241.45
37	30	Casing Joints	5 1/2	20.00	P-110	Yes	43.72	Yes			16,359.0	1,329.01
39	32	Casing Joints	5 1/2	20.00	P-110	Yes	44.11	Yes			16,271.0	1,417.03
41	34	Casing Joints	5 1/2	20.00	P-110	Yes	41.09	Yes			16,186.2	1,501.85
43	36	Casing Joints	5 1/2	20.00	P-110	Yes	43.82	Yes			16,098.6	1,589.41
45	38	Casing Joints	5 1/2	20.00	P-110	Yes	43.81	Yes			16,016.1	1,671.88
47	40	Casing Joints	5 1/2	20.00	P-110	Yes	43.72	Yes			15,929.4	1,758.64
49	42	Casing Joints	5 1/2	20.00	P-110	Yes	43.74	Yes			15,841.9	1,846.13
51	44	Casing Joints	5 1/2	20.00	P-110	Yes	44.15	Yes			15,753.8	1,934.22
53	46	Casing Joints	5 1/2	20.00	P-110	Yes	44.04	Yes			15,665.9	2,022.08
55	48	Casing Joints	5 1/2	20.00	P-110	Yes	43.89	Yes			15,580.0	2,108.05
57	50	Casing Joints	5 1/2	20.00	P-110	Yes	43.77	Yes			15,492.5	2,195.54
59	52	Casing Joints	5 1/2	20.00	P-110	Yes	46.05	Yes			15,403.6	2,284.37
61	54	Casing Joints	5 1/2	20.00	P-110	Yes	44.13	Yes			15,313.5	2,374.55
63	56	Casing Joints	5 1/2	20.00	P-110	Yes	44.15	Yes			15,225.2	2,462.81
65	58	Casing Joints	5 1/2	20.00	P-110	Yes	46.12	Yes			15,133.6	2,554.42
67	60	Casing Joints	5 1/2	20.00	P-110	Yes	46.12	Yes			15,041.3	2,646.67



## Centralizer Depths

Well Name: Bost Farm 40N-8B-L2

Production, Set Depth: 17,688.0ftKB

API 05123514490000		Surface Legal Location SWNW 7 5N 66W		Field Name Wattenberg		State CO		Well Configuration Type Horizontal					
Ground Elevation (ft) 4,874.00		Original KB Elevation (ft) 4,902.00		KB-Ground Distance (ft) 28.00		Spud Date 5/22/2022 17:30		Rig Release Date 5/27/2022 15:00		On Production Date		Abandon Date	

### Casing Run Tally

Run #	Ref #	Item Des	OD (in)	Wt (lb/ft)	Grade	Run?	Len (ft)	Centralized?	Ext Jw/ry	Connections	Top (ftKB)	Cum Len (ft)
69	62	Casing Joints	5 1/2	20.00	P-110	Yes	42.79	Yes			14,954.5	2,733.52
71	64	Casing Joints	5 1/2	20.00	P-110	Yes	44.13	Yes			14,866.2	2,821.77
73	66	Casing Joints	5 1/2	20.00	P-110	Yes	43.90	Yes			14,778.2	2,909.79
75	68	Casing Joints	5 1/2	20.00	P-110	Yes	44.12	Yes			14,688.6	2,999.44
77	70	Casing Joints	5 1/2	20.00	P-110	Yes	46.22	Yes			14,596.2	3,091.79
79	72	Casing Joints	5 1/2	20.00	P-110	Yes	46.09	Yes			14,504.0	3,184.00
81	74	Casing Joints	5 1/2	20.00	P-110	Yes	43.80	Yes			14,414.0	3,274.01
83	76	Casing Joints	5 1/2	20.00	P-110	Yes	46.11	Yes			14,321.9	3,366.15
85	78	Casing Joints	5 1/2	20.00	P-110	Yes	43.95	Yes			14,231.8	3,456.16
87	80	Casing Joints	5 1/2	20.00	P-110	Yes	46.06	Yes			14,141.8	3,546.18
89	82	Casing Joints	5 1/2	20.00	P-110	Yes	46.12	Yes			14,049.7	3,638.33
91	84	Casing Joints	5 1/2	20.00	P-110	Yes	46.12	Yes			13,957.3	3,730.66
93	86	Casing Joints	5 1/2	20.00	P-110	Yes	46.17	Yes			13,867.1	3,820.89
95	88	Casing Joints	5 1/2	20.00	P-110	Yes	46.04	Yes			13,775.0	3,912.98
97	90	Casing Joints	5 1/2	20.00	P-110	Yes	44.06	Yes			13,684.9	4,003.09
99	92	Casing Joints	5 1/2	20.00	P-110	Yes	46.12	Yes			13,594.2	4,093.78
101	94	Casing Joints	5 1/2	20.00	P-110	Yes	46.12	Yes			13,502.0	4,186.04
103	96	Casing Joints	5 1/2	20.00	P-110	Yes	44.04	Yes			13,412.4	4,275.61
105	98	Casing Joints	5 1/2	20.00	P-110	Yes	46.12	Yes			13,321.0	4,367.00
107	100	Casing Joints	5 1/2	20.00	P-110	Yes	46.03	Yes			13,228.9	4,459.13
109	102	Casing Joints	5 1/2	20.00	P-110	Yes	42.03	Yes			13,142.8	4,545.21
111	104	Casing Joints	5 1/2	20.00	P-110	Yes	44.07	Yes			13,054.8	4,633.25
114	107	Casing Joints	5 1/2	20.00	P-110	Yes	44.05	Yes			12,922.6	4,765.37
116	109	Casing Joints	5 1/2	20.00	P-110	Yes	39.28	Yes			12,839.3	4,848.70
118	111	Casing Joints	5 1/2	20.00	P-110	Yes	44.05	Yes			12,751.3	4,936.66
121	113	Casing Joints	5 1/2	20.00	P-110	Yes	44.04	Yes			12,651.5	5,036.49
123	115	Casing Joints	5 1/2	20.00	P-110	Yes	44.14	Yes			12,563.3	5,124.68
125	117	Casing Joints	5 1/2	20.00	P-110	Yes	43.73	Yes			12,475.8	5,212.20
127	119	Casing Joints	5 1/2	20.00	P-110	Yes	40.15	Yes			12,394.6	5,293.36
129	121	Casing Joints	5 1/2	20.00	P-110	Yes	44.04	Yes			12,306.5	5,381.46
131	123	Casing Joints	5 1/2	20.00	P-110	Yes	44.07	Yes			12,218.5	5,469.48



## Centralizer Depths

Well Name: **Bost Farm 40N-8B-L2**

Production, Set Depth: **17,688.0ftKB**

API 05123514490000		Surface Legal Location SWNW 7 5N 66W		Field Name Wattenberg		State CO		Well Configuration Type Horizontal	
Ground Elevation (ft) 4,874.00		Original KB Elevation (ft) 4,902.00		KB-Ground Distance (ft) 28.00		Spud Date 5/22/2022 17:30		Rig Release Date 5/27/2022 15:00	
						On Production Date		Abandon Date	

### Casing Run Tally

Run #	Ref #	Item Des	OD (in)	Wt (lb/ft)	Grade	Run?	Len (ft)	Centralized?	Ext Jw/ry	Connections	Top (ftKB)	Cum Len (ft)
133	125	Casing Joints	5 1/2	20.00	P-110	Yes	43.83	Yes			12,130.7	5,557.28
135	127	Casing Joints	5 1/2	20.00	P-110	Yes	44.14	Yes			12,042.5	5,645.46
137	129	Casing Joints	5 1/2	20.00	P-110	Yes	44.05	Yes			11,954.4	5,733.56
139	131	Casing Joints	5 1/2	20.00	P-110	Yes	44.11	Yes			11,866.4	5,821.58
141	133	Casing Joints	5 1/2	20.00	P-110	Yes	43.89	Yes			11,778.6	5,909.42
143	135	Casing Joints	5 1/2	20.00	P-110	Yes	43.96	Yes			11,695.4	5,992.63
145	137	Casing Joints	5 1/2	20.00	P-110	Yes	43.87	Yes			11,607.6	6,080.40
147	139	Casing Joints	5 1/2	20.00	P-110	Yes	44.05	Yes			11,519.5	6,168.50
149	141	Casing Joints	5 1/2	20.00	P-110	Yes	44.06	Yes			11,431.7	6,256.27
151	143	Casing Joints	5 1/2	20.00	P-110	Yes	44.13	Yes			11,346.8	6,341.24
153	145	Casing Joints	5 1/2	20.00	P-110	Yes	40.11	Yes			11,262.6	6,425.40
155	147	Casing Joints	5 1/2	20.00	P-110	Yes	46.83	Yes			11,169.8	6,518.21
157	149	Casing Joints	5 1/2	20.00	P-110	Yes	43.90	Yes			11,080.3	6,607.74
159	151	Casing Joints	5 1/2	20.00	P-110	Yes	45.91	Yes			10,992.3	6,695.67
161	153	Casing Joints	5 1/2	20.00	P-110	Yes	45.88	Yes			10,900.2	6,787.81
163	155	Casing Joints	5 1/2	20.00	P-110	Yes	46.82	Yes			10,806.5	6,881.53
165	157	Casing Joints	5 1/2	20.00	P-110	Yes	45.93	Yes			10,714.7	6,973.32
167	159	Casing Joints	5 1/2	20.00	P-110	Yes	45.89	Yes			10,622.9	7,065.08
169	161	Casing Joints	5 1/2	20.00	P-110	Yes	45.64	Yes			10,531.3	7,156.68
171	163	Casing Joints	5 1/2	20.00	P-110	Yes	46.11	Yes			10,439.6	7,248.38
173	165	Casing Joints	5 1/2	20.00	P-110	Yes	45.92	Yes			10,347.8	7,340.25
175	167	Casing Joints	5 1/2	20.00	P-110	Yes	46.04	Yes			10,255.8	7,432.25
177	169	Casing Joints	5 1/2	20.00	P-110	Yes	42.74	Yes			10,167.1	7,520.93
179	171	Casing Joints	5 1/2	20.00	P-110	Yes	46.90	Yes			10,074.2	7,613.79
181	173	Casing Joints	5 1/2	20.00	P-110	Yes	45.85	Yes			9,982.4	7,705.59
183	175	Casing Joints	5 1/2	20.00	P-110	Yes	45.95	Yes			9,890.5	7,797.50
185	177	Casing Joints	5 1/2	20.00	P-110	Yes	45.94	Yes			9,799.0	7,888.98
187	179	Casing Joints	5 1/2	20.00	P-110	Yes	45.86	Yes			9,707.3	7,980.69
189	181	Casing Joints	5 1/2	20.00	P-110	Yes	45.54	Yes			9,620.6	8,067.40
191	183	Casing Joints	5 1/2	20.00	P-110	Yes	45.54	Yes			9,529.7	8,158.33
193	185	Casing Joints	5 1/2	20.00	P-110	Yes	45.53	Yes			9,438.8	8,249.25



## Centralizer Depths

Well Name: Bost Farm 40N-8B-L2

Production, Set Depth: 17,688.0ftKB

API 05123514490000		Surface Legal Location SWNW 7 5N 66W		Field Name Wattenberg		State CO		Well Configuration Type Horizontal	
Ground Elevation (ft) 4,874.00		Original KB Elevation (ft) 4,902.00		KB-Ground Distance (ft) 28.00		Spud Date 5/22/2022 17:30		Rig Release Date 5/27/2022 15:00	
						On Production Date		Abandon Date	

### Casing Run Tally

Run #	Ref #	Item Des	OD (in)	Wt (lb/ft)	Grade	Run?	Len (ft)	Centralized?	Ext Jw/ry	Connections	Top (ftKB)	Cum Len (ft)
195	187	Casing Joints	5 1/2	20.00	P-110	Yes	45.61	Yes			9,347.6	8,340.39
197	189	Casing Joints	5 1/2	20.00	P-110	Yes	45.86	Yes			9,256.1	8,431.87
199	191	Casing Joints	5 1/2	20.00	P-110	Yes	45.52	Yes			9,164.7	8,523.34
201	193	Casing Joints	5 1/2	20.00	P-110	Yes	45.53	Yes			9,073.7	8,614.28
203	195	Casing Joints	5 1/2	20.00	P-110	Yes	45.52	Yes			8,982.7	8,705.34
205	197	Casing Joints	5 1/2	20.00	P-110	Yes	44.12	Yes			8,892.5	8,795.50
207	199	Casing Joints	5 1/2	20.00	P-110	Yes	46.14	Yes			8,800.2	8,887.85
209	201	Casing Joints	5 1/2	20.00	P-110	Yes	45.15	Yes			8,708.9	8,979.07
211	203	Casing Joints	5 1/2	20.00	P-110	Yes	45.54	Yes			8,617.8	9,070.23
213	205	Casing Joints	5 1/2	20.00	P-110	Yes	44.12	Yes			8,527.5	9,160.49
215	207	Casing Joints	5 1/2	20.00	P-110	Yes	46.12	Yes			8,437.3	9,250.70
217	209	Casing Joints	5 1/2	20.00	P-110	Yes	45.64	Yes			8,345.6	9,342.39
219	211	Casing Joints	5 1/2	20.00	P-110	Yes	46.06	Yes			8,253.9	9,434.08
221	213	Casing Joints	5 1/2	20.00	P-110	Yes	44.05	Yes			8,166.0	9,522.04
223	215	Casing Joints	5 1/2	20.00	P-110	Yes	44.11	Yes			8,079.9	9,608.13
225	217	Casing Joints	5 1/2	20.00	P-110	Yes	43.90	Yes			7,992.6	9,695.38
227	219	Casing Joints	5 1/2	20.00	P-110	Yes	43.90	Yes			7,904.8	9,783.16
229	221	Casing Joints	5 1/2	20.00	P-110	Yes	43.87	Yes			7,817.0	9,870.97
231		Marker Joint C	5 1/2	20.00	P-110	Yes	11.30	Yes			7,761.7	9,926.32
232	223	Casing Joints	5 1/2	20.00	P-110	Yes	46.04	Yes			7,715.6	9,972.36
233	224	Casing Joints	5 1/2	20.00	P-110	Yes	44.06	Yes			7,671.6	10,016.42
234	225	Casing Joints	5 1/2	20.00	P-110	Yes	44.11	Yes			7,627.5	10,060.53
235	226	Casing Joints	5 1/2	20.00	P-110	Yes	43.74	Yes			7,583.7	10,104.27
236	227	Casing Joints	5 1/2	20.00	P-110	Yes	44.12	Yes			7,539.6	10,148.39
237	228	Casing Joints	5 1/2	20.00	P-110	Yes	44.11	Yes			7,495.5	10,192.50
238	229	Casing Joints	5 1/2	20.00	P-110	Yes	40.16	Yes			7,455.3	10,232.66
239	230	Casing Joints	5 1/2	20.00	P-110	Yes	44.03	Yes			7,411.3	10,276.69
240	231	Casing Joints	5 1/2	20.00	P-110	Yes	44.12	Yes			7,367.2	10,320.81
241	232	Casing Joints	5 1/2	20.00	P-110	Yes	44.12	Yes			7,323.1	10,364.93
242	233	Casing Joints	5 1/2	20.00	P-110	Yes	44.05	Yes			7,279.0	10,408.98
243	234	Casing Joints	5 1/2	20.00	P-110	Yes	43.99	Yes			7,235.0	10,452.97





## Centralizer Depths

Well Name: Bost Farm 40N-8B-L2

Production, Set Depth: 17,688.0ftKB

API 05123514490000		Surface Legal Location SWNW 7 5N 66W		Field Name Wattenberg		State CO		Well Configuration Type Horizontal	
Ground Elevation (ft) 4,874.00		Original KB Elevation (ft) 4,902.00		KB-Ground Distance (ft) 28.00		Spud Date 5/22/2022 17:30		Rig Release Date 5/27/2022 15:00	
						On Production Date		Abandon Date	

### Casing Run Tally

Run #	Ref #	Item Des	OD (in)	Wt (lb/ft)	Grade	Run?	Len (ft)	Centralized?	Ext Jwlry	Connections	Top (ftKB)	Cum Len (ft)
244	235	Casing Joints	5 1/2	20.00	P-110	Yes	43.93	Yes			7,191.1	10,496.90
245	236	Casing Joints	5 1/2	20.00	P-110	Yes	44.02	Yes			7,147.1	10,540.92
246	237	Casing Joints	5 1/2	20.00	P-110	Yes	44.07	Yes			7,103.0	10,584.99
247	238	Casing Joints	5 1/2	20.00	P-110	Yes	41.86	Yes			7,061.2	10,626.85
248	239	Casing Joints	5 1/2	20.00	P-110	Yes	44.13	Yes			7,017.0	10,670.98
249	240	Casing Joints	5 1/2	20.00	P-110	Yes	44.12	Yes			6,972.9	10,715.10
250	241	Casing Joints	5 1/2	20.00	P-110	Yes	44.10	Yes			6,928.8	10,759.20
251	242	Casing Joints	5 1/2	20.00	P-110	Yes	44.11	Yes			6,884.7	10,803.31
252	243	Casing Joints	5 1/2	20.00	P-110	Yes	43.98	Yes			6,840.7	10,847.29
253	244	Casing Joints	5 1/2	20.00	P-110	Yes	43.90	Yes			6,796.8	10,891.19
254	245	Casing Joints	5 1/2	20.00	P-110	Yes	44.13	Yes			6,752.7	10,935.32
255	246	Casing Joints	5 1/2	20.00	P-110	Yes	43.95	Yes			6,708.7	10,979.27
256	247	Casing Joints	5 1/2	20.00	P-110	Yes	46.14	Yes			6,662.6	11,025.41
257	248	Casing Joints	5 1/2	20.00	P-110	Yes	44.06	Yes			6,618.5	11,069.47
258	249	Casing Joints	5 1/2	20.00	P-110	Yes	43.57	Yes			6,575.0	11,113.04
259	250	Casing Joints	5 1/2	20.00	P-110	Yes	43.97	Yes			6,531.0	11,157.01
260	251	Casing Joints	5 1/2	20.00	P-110	Yes	43.77	Yes			6,487.2	11,200.78
261	252	Casing Joints	5 1/2	20.00	P-110	Yes	44.06	Yes			6,443.2	11,244.84
262	253	Casing Joints	5 1/2	20.00	P-110	Yes	43.91	Yes			6,399.3	11,288.75
263		Marker Joint G	5 1/2	20.00	P-110	Yes	23.53	Yes			6,375.7	11,312.28
264	254	Casing Joints	5 1/2	20.00	P-110	Yes	43.96	Yes			6,331.8	11,356.24
265	255	Casing Joints	5 1/2	20.00	P-110	Yes	42.00	Yes			6,289.8	11,398.24
266	256	Casing Joints	5 1/2	20.00	P-110	Yes	42.25	Yes			6,247.5	11,440.49
267	257	Casing Joints	5 1/2	20.00	P-110	Yes	43.98	Yes			6,203.5	11,484.47
268	258	Casing Joints	5 1/2	20.00	P-110	Yes	43.78	Yes			6,159.8	11,528.25
269	259	Casing Joints	5 1/2	20.00	P-110	Yes	43.82	Yes			6,115.9	11,572.07
270	260	Casing Joints	5 1/2	20.00	P-110	Yes	43.88	Yes			6,072.1	11,615.95
271	261	Casing Joints	5 1/2	20.00	P-110	Yes	43.88	Yes			6,028.2	11,659.83
272	262	Casing Joints	5 1/2	20.00	P-110	Yes	40.15	Yes			5,988.0	11,699.98
273	263	Casing Joints	5 1/2	20.00	P-110	Yes	38.75	Yes			5,949.3	11,738.73
274	264	Casing Joints	5 1/2	20.00	P-110	Yes	40.14	Yes			5,909.1	11,778.87



## Centralizer Depths

Well Name: Bost Farm 40N-8B-L2

Production, Set Depth: 17,688.0ftKB

API 05123514490000		Surface Legal Location SWNW 7 5N 66W		Field Name Wattenberg		State CO		Well Configuration Type Horizontal	
Ground Elevation (ft) 4,874.00		Original KB Elevation (ft) 4,902.00		KB-Ground Distance (ft) 28.00		Spud Date 5/22/2022 17:30		Rig Release Date 5/27/2022 15:00	
						On Production Date		Abandon Date	

### Casing Run Tally

Run #	Ref #	Item Des	OD (in)	Wt (lb/ft)	Grade	Run?	Len (ft)	Centralized?	Ext Jwlry	Connections	Top (ftKB)	Cum Len (ft)
275	265	Casing Joints	5 1/2	20.00	P-110	Yes	38.66	Yes			5,870.5	11,817.53
276	266	Casing Joints	5 1/2	20.00	P-110	Yes	43.97	Yes			5,826.5	11,861.50
277	267	Casing Joints	5 1/2	20.00	P-110	Yes	43.97	Yes			5,782.5	11,905.47
278	268	Casing Joints	5 1/2	20.00	P-110	Yes	44.00	Yes			5,738.5	11,949.47
279	269	Casing Joints	5 1/2	20.00	P-110	Yes	43.76	Yes			5,694.8	11,993.23
280	270	Casing Joints	5 1/2	20.00	P-110	Yes	43.84	Yes			5,650.9	12,037.07
281	271	Casing Joints	5 1/2	20.00	P-110	Yes	44.14	Yes			5,606.8	12,081.21
282	272	Casing Joints	5 1/2	20.00	P-110	Yes	38.86	Yes			5,567.9	12,120.07
283	273	Casing Joints	5 1/2	20.00	P-110	Yes	44.12	Yes			5,523.8	12,164.19
284	274	Casing Joints	5 1/2	20.00	P-110	Yes	39.22	Yes			5,484.6	12,203.41
285	275	Casing Joints	5 1/2	20.00	P-110	Yes	44.06	Yes			5,440.5	12,247.47
286	276	Casing Joints	5 1/2	20.00	P-110	Yes	43.78	Yes			5,396.8	12,291.25
287	277	Casing Joints	5 1/2	20.00	P-110	Yes	43.74	Yes			5,353.0	12,334.99
288	278	Casing Joints	5 1/2	20.00	P-110	Yes	43.45	Yes			5,309.6	12,378.44
289	279	Casing Joints	5 1/2	20.00	P-110	Yes	43.76	Yes			5,265.8	12,422.20
290	280	Casing Joints	5 1/2	20.00	P-110	Yes	43.73	Yes			5,222.1	12,465.93
291	281	Casing Joints	5 1/2	20.00	P-110	Yes	44.10	Yes			5,178.0	12,510.03
292	282	Casing Joints	5 1/2	20.00	P-110	Yes	43.83	Yes			5,134.1	12,553.86
293	283	Casing Joints	5 1/2	20.00	P-110	Yes	44.04	Yes			5,090.1	12,597.90
294	284	Casing Joints	5 1/2	20.00	P-110	Yes	43.78	Yes			5,046.3	12,641.68
295	285	Casing Joints	5 1/2	20.00	P-110	Yes	44.05	Yes			5,002.3	12,685.73
296	286	Casing Joints	5 1/2	20.00	P-110	Yes	40.24	Yes			4,962.0	12,725.97
297	287	Casing Joints	5 1/2	20.00	P-110	Yes	40.06	Yes			4,922.0	12,766.03
298	288	Casing Joints	5 1/2	20.00	P-110	Yes	41.42	Yes			4,880.6	12,807.45
299	289	Casing Joints	5 1/2	20.00	P-110	Yes	43.80	Yes			4,836.8	12,851.25
300	290	Casing Joints	5 1/2	20.00	P-110	Yes	43.82	Yes			4,792.9	12,895.07
301	291	Casing Joints	5 1/2	20.00	P-110	Yes	44.06	Yes			4,748.9	12,939.13
302	292	Casing Joints	5 1/2	20.00	P-110	Yes	43.09	Yes			4,705.8	12,982.22
303	293	Casing Joints	5 1/2	20.00	P-110	Yes	43.88	Yes			4,661.9	13,026.10
304	294	Casing Joints	5 1/2	20.00	P-110	Yes	43.84	Yes			4,618.1	13,069.94
305	295	Casing Joints	5 1/2	20.00	P-110	Yes	41.92	Yes			4,576.1	13,111.86



## Centralizer Depths

Well Name: Bost Farm 40N-8B-L2

Production, Set Depth: 17,688.0ftKB

API 05123514490000		Surface Legal Location SWNW 7 5N 66W		Field Name Wattenberg		State CO		Well Configuration Type Horizontal	
Ground Elevation (ft) 4,874.00		Original KB Elevation (ft) 4,902.00		KB-Ground Distance (ft) 28.00		Spud Date 5/22/2022 17:30		Rig Release Date 5/27/2022 15:00	
						On Production Date		Abandon Date	

### Casing Run Tally

Run #	Ref #	Item Des	OD (in)	Wt (lb/ft)	Grade	Run?	Len (ft)	Centralized?	Ext Jw/ry	Connections	Top (ftKB)	Cum Len (ft)
306	296	Casing Joints	5 1/2	20.00	P-110	Yes	45.55	Yes			4,530.6	13,157.41
307	297	Casing Joints	5 1/2	20.00	P-110	Yes	44.35	Yes			4,486.2	13,201.76
308	298	Casing Joints	5 1/2	20.00	P-110	Yes	45.86	Yes			4,440.4	13,247.62
309	299	Casing Joints	5 1/2	20.00	P-110	Yes	45.40	Yes			4,395.0	13,293.02
310	300	Casing Joints	5 1/2	20.00	P-110	Yes	45.53	Yes			4,349.5	13,338.55
311	301	Casing Joints	5 1/2	20.00	P-110	Yes	45.88	Yes			4,303.6	13,384.43
312	302	Casing Joints	5 1/2	20.00	P-110	Yes	45.88	Yes			4,257.7	13,430.31
313	303	Casing Joints	5 1/2	20.00	P-110	Yes	45.53	Yes			4,212.2	13,475.84
314	304	Casing Joints	5 1/2	20.00	P-110	Yes	45.96	Yes			4,166.2	13,521.80
315	305	Casing Joints	5 1/2	20.00	P-110	Yes	45.63	Yes			4,120.6	13,567.43
316	306	Casing Joints	5 1/2	20.00	P-110	Yes	45.54	Yes			4,075.0	13,612.97
317	307	Casing Joints	5 1/2	20.00	P-110	Yes	45.62	Yes			4,029.4	13,658.59
318	308	Casing Joints	5 1/2	20.00	P-110	Yes	45.99	Yes			3,983.4	13,704.58
319	309	Casing Joints	5 1/2	20.00	P-110	Yes	45.98	Yes			3,937.4	13,750.56
320	310	Casing Joints	5 1/2	20.00	P-110	Yes	45.53	Yes			3,891.9	13,796.09
321	311	Casing Joints	5 1/2	20.00	P-110	Yes	45.94	Yes			3,846.0	13,842.03
322	312	Casing Joints	5 1/2	20.00	P-110	Yes	45.87	Yes			3,800.1	13,887.90
323	313	Casing Joints	5 1/2	20.00	P-110	Yes	45.98	Yes			3,754.1	13,933.88
324	314	Casing Joints	5 1/2	20.00	P-110	Yes	45.85	Yes			3,708.3	13,979.73
325	315	Casing Joints	5 1/2	20.00	P-110	Yes	45.35	Yes			3,662.9	14,025.08
326	316	Casing Joints	5 1/2	20.00	P-110	Yes	45.84	Yes			3,617.1	14,070.92
327	317	Casing Joints	5 1/2	20.00	P-110	Yes	45.78	Yes			3,571.3	14,116.70
328	318	Casing Joints	5 1/2	20.00	P-110	Yes	45.96	Yes			3,525.3	14,162.66
329	319	Casing Joints	5 1/2	20.00	P-110	Yes	45.95	Yes			3,479.4	14,208.61
330	320	Casing Joints	5 1/2	20.00	P-110	Yes	45.85	Yes			3,433.5	14,254.46
331	321	Casing Joints	5 1/2	20.00	P-110	Yes	45.95	Yes			3,387.6	14,300.41
332	322	Casing Joints	5 1/2	20.00	P-110	Yes	45.84	Yes			3,341.8	14,346.25
333	323	Casing Joints	5 1/2	20.00	P-110	Yes	45.86	Yes			3,295.9	14,392.11
334	324	Casing Joints	5 1/2	20.00	P-110	Yes	45.93	Yes			3,250.0	14,438.04
335	325	Casing Joints	5 1/2	20.00	P-110	Yes	45.88	Yes			3,204.1	14,483.92
336	326	Casing Joints	5 1/2	20.00	P-110	Yes	43.99	Yes			3,160.1	14,527.91



## Centralizer Depths

Well Name: Bost Farm 40N-8B-L2

Production, Set Depth: 17,688.0ftKB

API 05123514490000		Surface Legal Location SWNW 7 5N 66W		Field Name Wattenberg		State CO		Well Configuration Type Horizontal	
Ground Elevation (ft) 4,874.00		Original KB Elevation (ft) 4,902.00		KB-Ground Distance (ft) 28.00		Spud Date 5/22/2022 17:30		Rig Release Date 5/27/2022 15:00	
						On Production Date		Abandon Date	

### Casing Run Tally

Run #	Ref #	Item Des	OD (in)	Wt (lb/ft)	Grade	Run?	Len (ft)	Centralized?	Ext Jw/ry	Connections	Top (ftKB)	Cum Len (ft)
337	327	Casing Joints	5 1/2	20.00	P-110	Yes	45.55	Yes			3,114.5	14,573.46
338	328	Casing Joints	5 1/2	20.00	P-110	Yes	45.54	Yes			3,069.0	14,619.00
339	329	Casing Joints	5 1/2	20.00	P-110	Yes	45.54	Yes			3,023.5	14,664.54
340	330	Casing Joints	5 1/2	20.00	P-110	Yes	45.61	Yes			2,977.9	14,710.15
341	331	Casing Joints	5 1/2	20.00	P-110	Yes	45.63	Yes			2,932.2	14,755.78
343	332	Casing Joints	5 1/2	20.00	P-110	Yes	45.52	Yes			2,871.6	14,816.44
344	333	Casing Joints	5 1/2	20.00	P-110	Yes	45.54	Yes			2,826.0	14,861.98
345	334	Casing Joints	5 1/2	20.00	P-110	Yes	46.12	Yes			2,779.9	14,908.10
346	335	Casing Joints	5 1/2	20.00	P-110	Yes	44.15	Yes			2,735.8	14,952.25
347	336	Casing Joints	5 1/2	20.00	P-110	Yes	45.86	Yes			2,689.9	14,998.11
348	337	Casing Joints	5 1/2	20.00	P-110	Yes	44.45	Yes			2,645.4	15,042.56
349	338	Casing Joints	5 1/2	20.00	P-110	Yes	45.95	Yes			2,599.5	15,088.51
350	339	Casing Joints	5 1/2	20.00	P-110	Yes	45.64	Yes			2,553.9	15,134.15
351	340	Casing Joints	5 1/2	20.00	P-110	Yes	45.54	Yes			2,508.3	15,179.69
352	341	Casing Joints	5 1/2	20.00	P-110	Yes	45.34	Yes			2,463.0	15,225.03
353	342	Casing Joints	5 1/2	20.00	P-110	Yes	45.49	Yes			2,417.5	15,270.52
354	343	Casing Joints	5 1/2	20.00	P-110	Yes	45.04	Yes			2,372.4	15,315.56
355	344	Casing Joints	5 1/2	20.00	P-110	Yes	46.01	Yes			2,326.4	15,361.57
356	345	Casing Joints	5 1/2	20.00	P-110	Yes	45.87	Yes			2,280.6	15,407.44
357	346	Casing Joints	5 1/2	20.00	P-110	Yes	42.95	Yes			2,237.6	15,450.39
358	347	Casing Joints	5 1/2	20.00	P-110	Yes	45.80	Yes			2,191.8	15,496.19
359	348	Casing Joints	5 1/2	20.00	P-110	Yes	45.54	Yes			2,146.3	15,541.73
360	349	Casing Joints	5 1/2	20.00	P-110	Yes	45.64	Yes			2,100.6	15,587.37
361	350	Casing Joints	5 1/2	20.00	P-110	Yes	45.64	Yes			2,055.0	15,633.01
362	351	Casing Joints	5 1/2	20.00	P-110	Yes	45.65	Yes			2,009.3	15,678.66
363	352	Casing Joints	5 1/2	20.00	P-110	Yes	45.56	Yes			1,963.8	15,724.22
364	353	Casing Joints	5 1/2	20.00	P-110	Yes	45.43	Yes			1,918.4	15,769.65
365	354	Casing Joints	5 1/2	20.00	P-110	Yes	45.53	Yes			1,872.8	15,815.18
366	355	Casing Joints	5 1/2	20.00	P-110	Yes	45.43	Yes			1,827.4	15,860.61
367	356	Casing Joints	5 1/2	20.00	P-110	Yes	45.63	Yes			1,781.8	15,906.24
368	357	Casing Joints	5 1/2	20.00	P-110	Yes	46.00	Yes			1,735.8	15,952.24



## Centralizer Depths

Well Name: Bost Farm 40N-8B-L2

Production, Set Depth: 17,688.0ftKB

API 05123514490000		Surface Legal Location SWNW 7 5N 66W		Field Name Wattenberg		State CO		Well Configuration Type Horizontal	
Ground Elevation (ft) 4,874.00		Original KB Elevation (ft) 4,902.00		KB-Ground Distance (ft) 28.00		Spud Date 5/22/2022 17:30		Rig Release Date 5/27/2022 15:00	
						On Production Date		Abandon Date	

### Casing Run Tally

Run #	Ref #	Item Des	OD (in)	Wt (lb/ft)	Grade	Run?	Len (ft)	Centralized?	Ext Jw/ry	Connections	Top (ftKB)	Cum Len (ft)
369	358	Casing Joints	5 1/2	20.00	P-110	Yes	45.64	Yes			1,690.1	15,997.88
370	359	Casing Joints	5 1/2	20.00	P-110	Yes	42.05	Yes			1,648.1	16,039.93
371	360	Casing Joints	5 1/2	20.00	P-110	Yes	41.29	Yes			1,606.8	16,081.22
372	361	Casing Joints	5 1/2	20.00	P-110	Yes	45.63	Yes			1,561.2	16,126.85
373	362	Casing Joints	5 1/2	20.00	P-110	Yes	45.54	Yes			1,515.6	16,172.39
374	363	Casing Joints	5 1/2	20.00	P-110	Yes	45.64	Yes			1,470.0	16,218.03
375	364	Casing Joints	5 1/2	20.00	P-110	Yes	44.07	Yes			1,425.9	16,262.10
376	365	Casing Joints	5 1/2	20.00	P-110	Yes	45.54	Yes			1,380.4	16,307.64
377	366	Casing Joints	5 1/2	20.00	P-110	Yes	45.54	Yes			1,334.8	16,353.18
378	367	Casing Joints	5 1/2	20.00	P-110	Yes	45.55	Yes			1,289.3	16,398.73
379	368	Casing Joints	5 1/2	20.00	P-110	Yes	45.76	Yes			1,243.5	16,444.49
380	369	Casing Joints	5 1/2	20.00	P-110	Yes	45.64	Yes			1,197.9	16,490.13
381	370	Casing Joints	5 1/2	20.00	P-110	Yes	36.63	Yes			1,161.2	16,526.76
382	371	Casing Joints	5 1/2	20.00	P-110	Yes	45.53	Yes			1,115.7	16,572.29