

Company: PDC Energy Inc

Well: Bost Farm 40N-8B-L2

Field Name: Wattenberg

Country Name: United States

State Name: Colorado

County Name: Weld

Company: PDC Energy Inc

Well: Bost Farm 40N-8B-L2

Field Name: Wattenberg

Country Name: United States

State Name: Colorado

County Name: Weld

Latitude: 40°24'52.708"N

Longitude: 104°49'40.026"W

Spud Date: 21-May-2022

Log Interval: 1655.00--17702.00(ft)

Depth Source: Driller's Depth

Log Measured From: Drill Floor

Drill Floor Elevation:4902.00(ft)

Ground Level Elevation:4874.00(ft)

Permanent Datum:Sea Level

API Number: 05-123-51449

Rig Name: Patterson 272

Rig Type: Land rig

Job Number: 22CC00116

Print Type: Final Print

Nothing: 1394603.54(ft)

Easting: 3187176.61 (ft)

Coordinate System:Plane, Northern Zone, US Feet

Xbolt GAMMA RAY

1in/100ft Measured Depth

Final Print

Recorded Mode

Schlumberger

Disclaimer

THE USE OF AND RELIANCE UPON THIS RECORDED-DATA BY THE HEREIN NAMED COMPANY (AND ANY OF ITS AFFILIATES, PARTNERS, REPRESENTATIVES, AGENTS, CONSULTANTS AND EMPLOYEES) IS SUBJECT TO THE TERMS AND CONDITIONS AGREED UPON BETWEEN SCHLUMBERGER AND THE COMPANY, INCLUDING: (a) RESTRICTIONS ON USE OF THE RECORDED-DATA; (b) DISCLAIMERS AND WAIVERS OF WARRANTIES AND REPRESENTATIONS REGARDING COMPANY'S USE AND RELIANCE UPON THE RECORDED-DATA; AND (c) CUSTOMER'S FULL AND SOLE RESPONSIBILITY FOR ANY INFERENCE DRAWN OR DECISION MADE IN CONNECTION WITH THE USE OF THIS RECORDED-DATA.

Operational Run Summary

Notes			
Run 1 (Bit Size: 8.5 in)			
DateTime Log Started	22-May-2022 15:07:25	DateTime Log Finished	22-May-2022 23:06:38
Start Depth (ft)	1667	Stop Depth (ft)	2710
Mud Type	Oil Based Mud	Mud Density (lbm/gal)	10.2
Potassium (%)	0	Barite	Yes
GR Sensor Offset (ft)	24.07	Calibration Coefficient	0
DNI Sensor Offset (ft)	27.71		
Run 2 (Bit Size: 8.5 in)			
DateTime Log Started	22-May-2022 23:29:17	DateTime Log Finished	26-May-2022 01:52:02
Start Depth (ft)	2710	Stop Depth (ft)	17702
Mud Type	Oil Based Mud	Mud Density (lbm/gal)	10.2
Potassium (%)	0	Barite	Yes
GR Sensor Offset (ft)	24.07	Calibration Coefficient	0

Log

Description: Xbolt GAMMA RAY

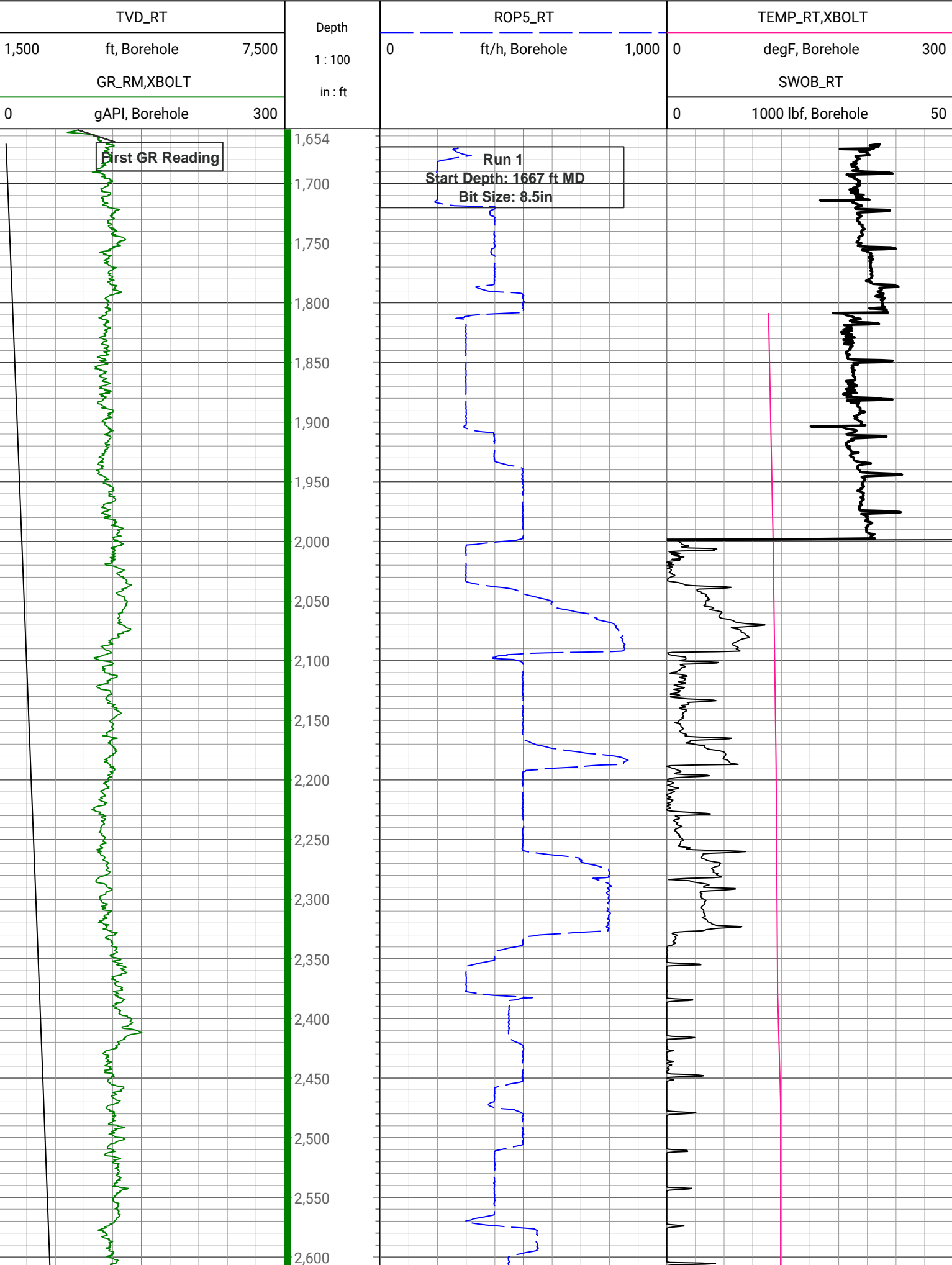
Format: XBOLT_PDC_Bost Farm

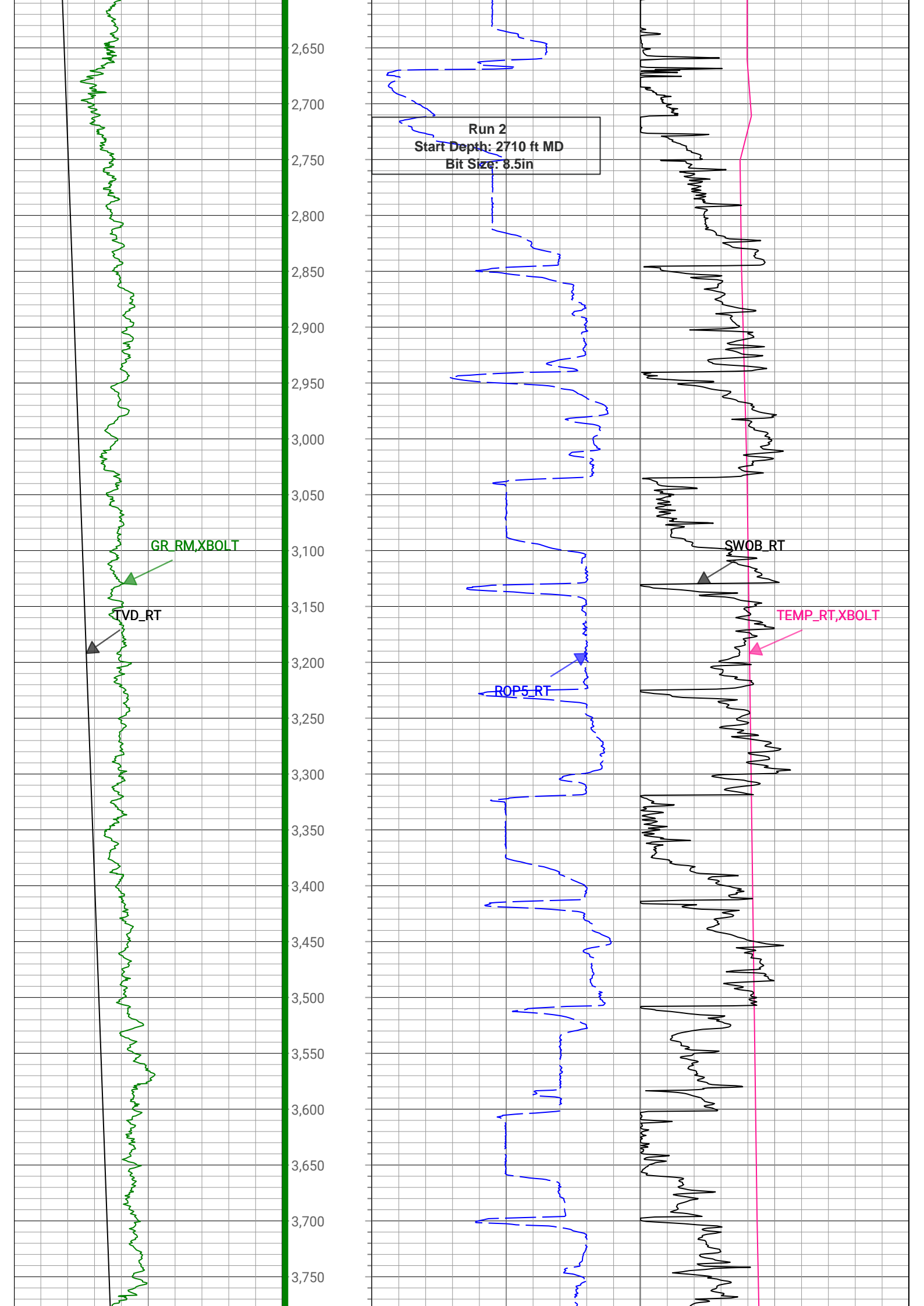
Index Scale: 1in/100ft

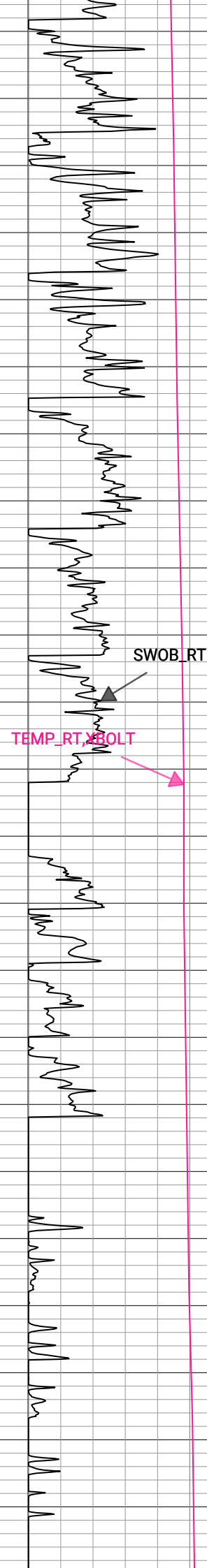
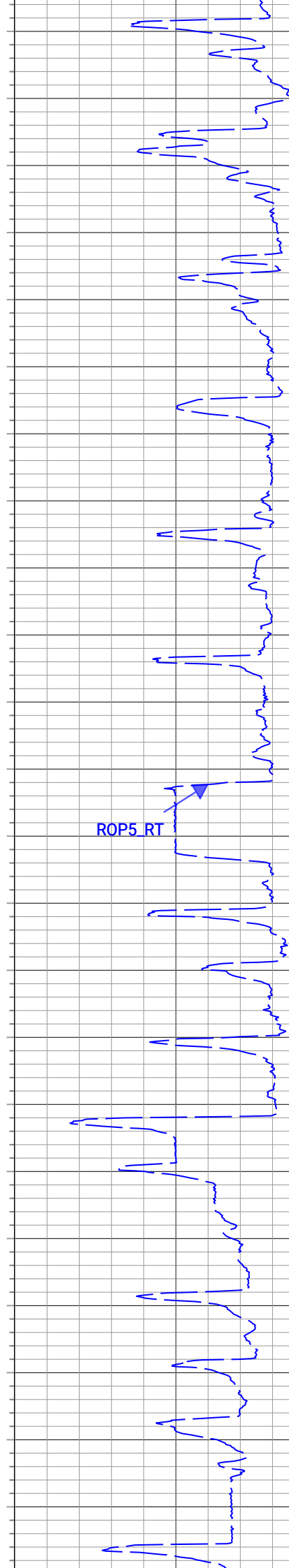
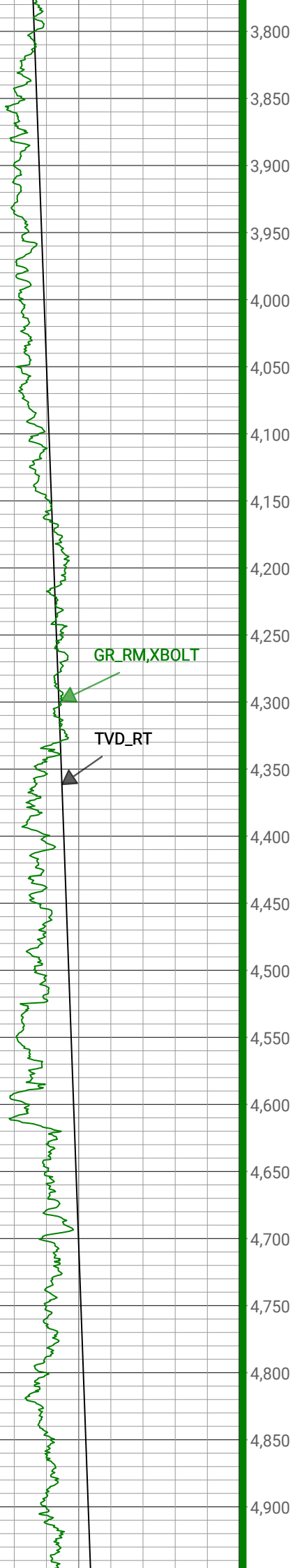
Index Unit: ft

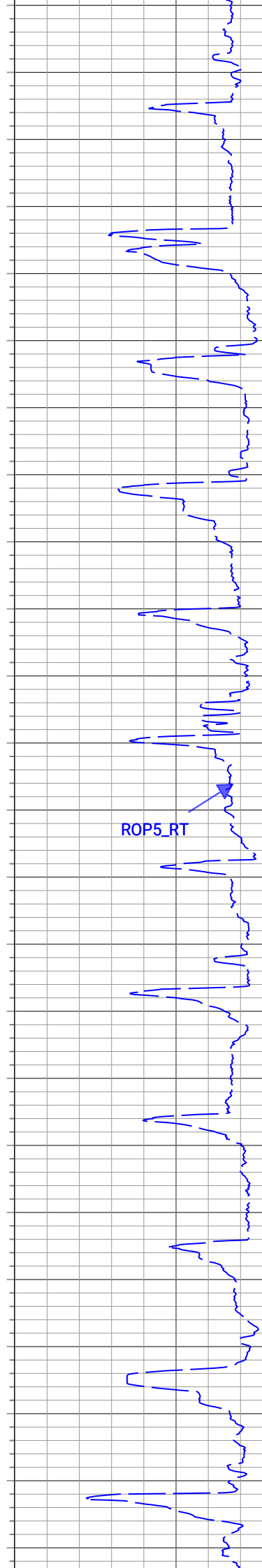
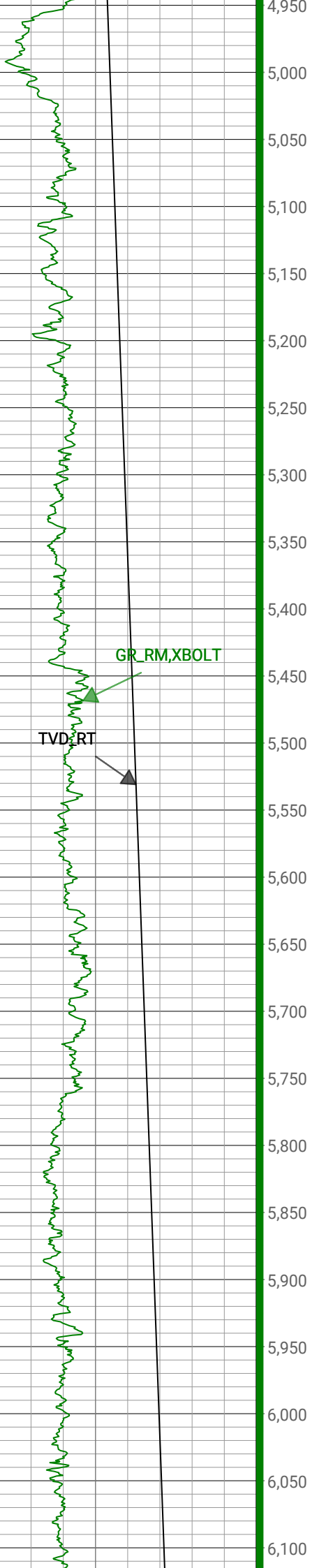
Index Type: Measured Depth

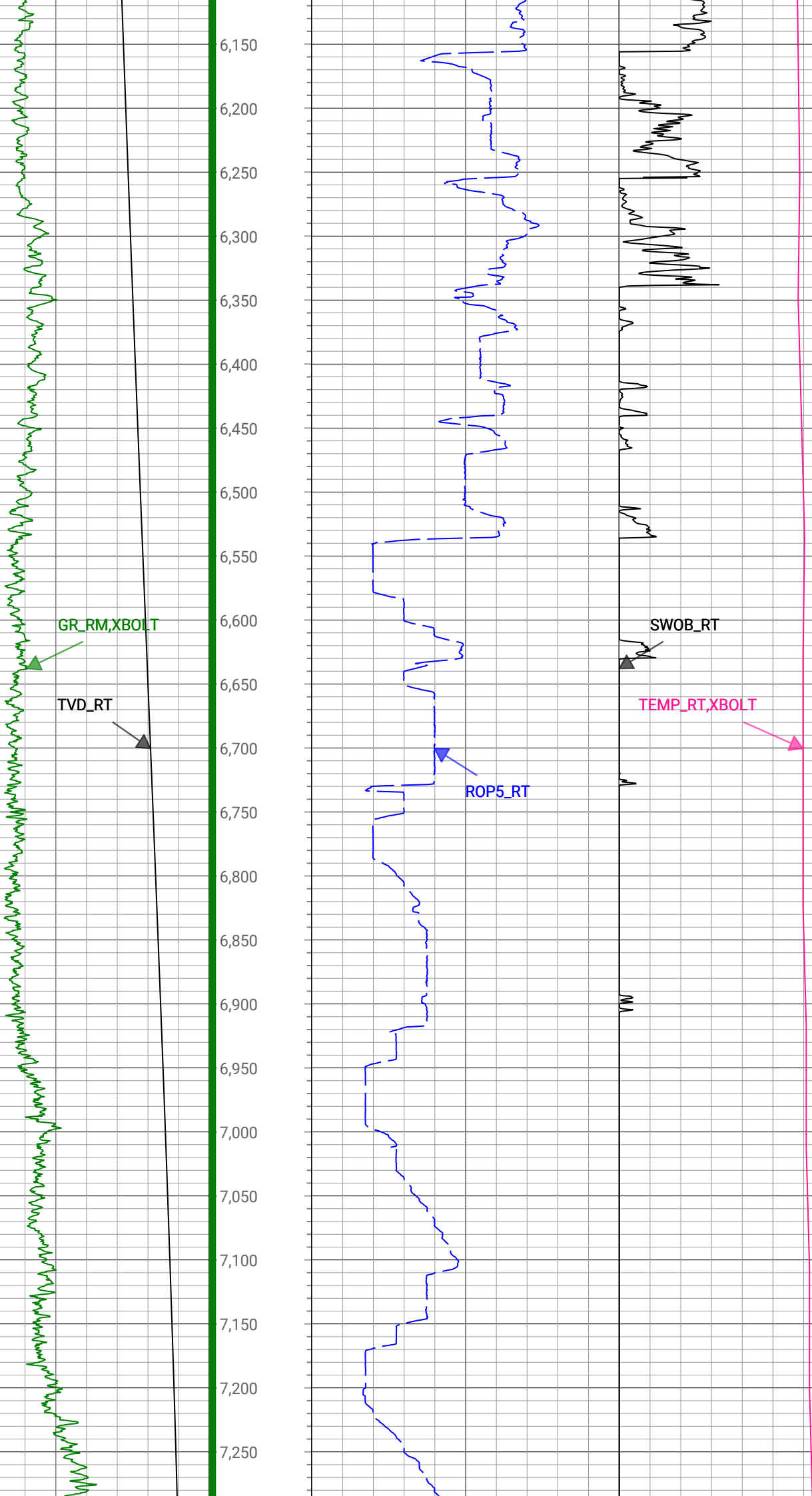
Creation Date: 31-May-2022

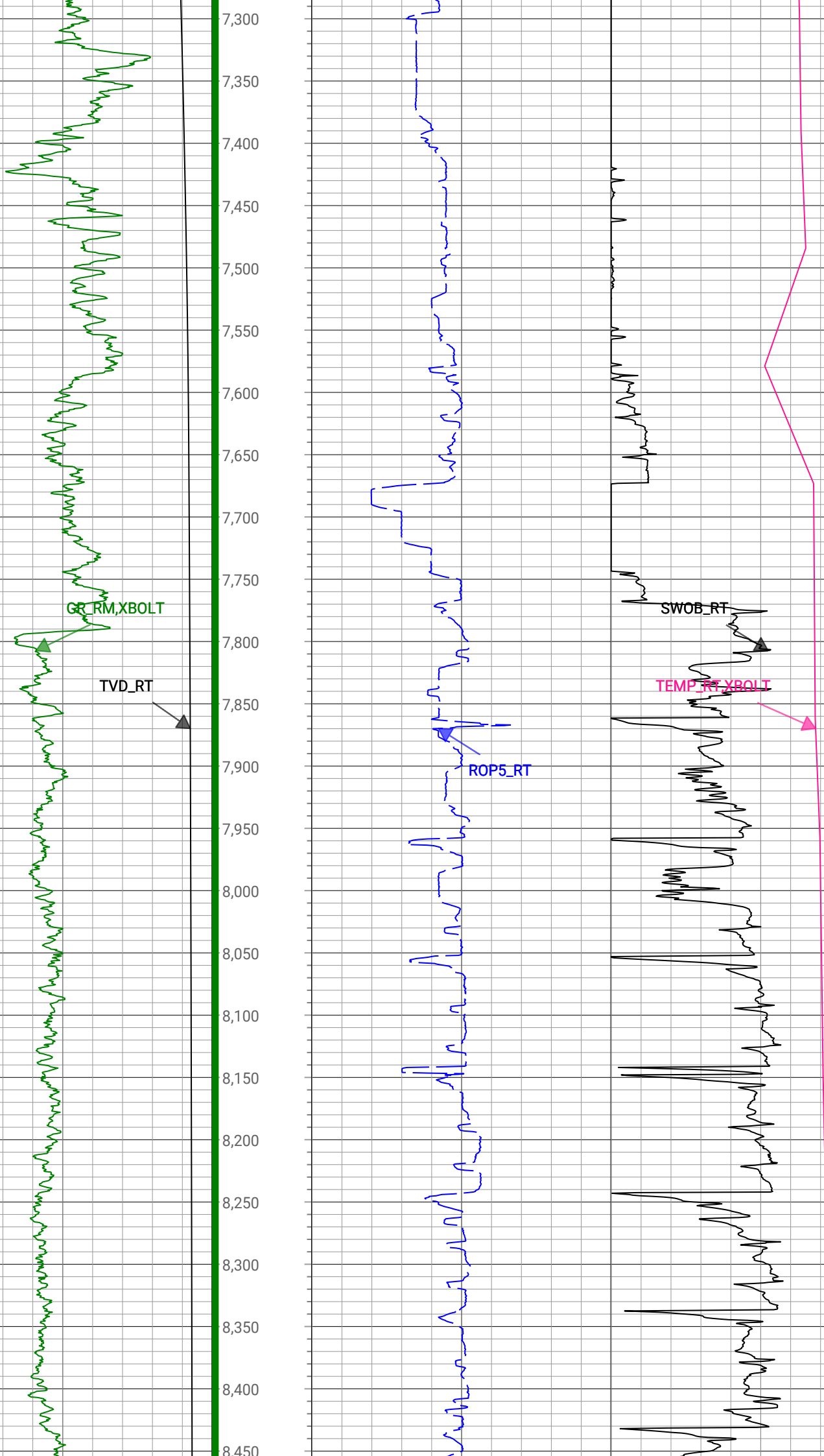


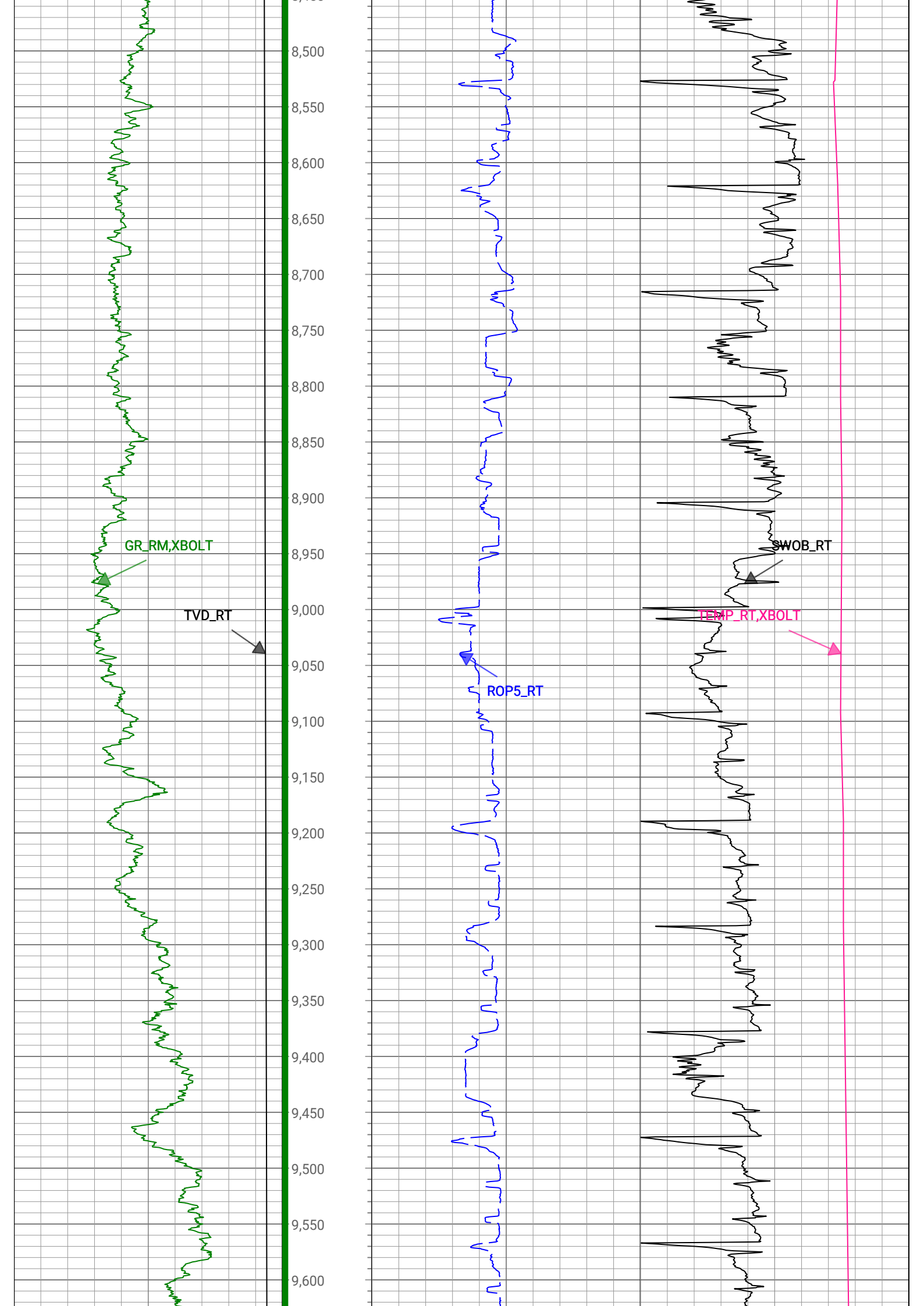


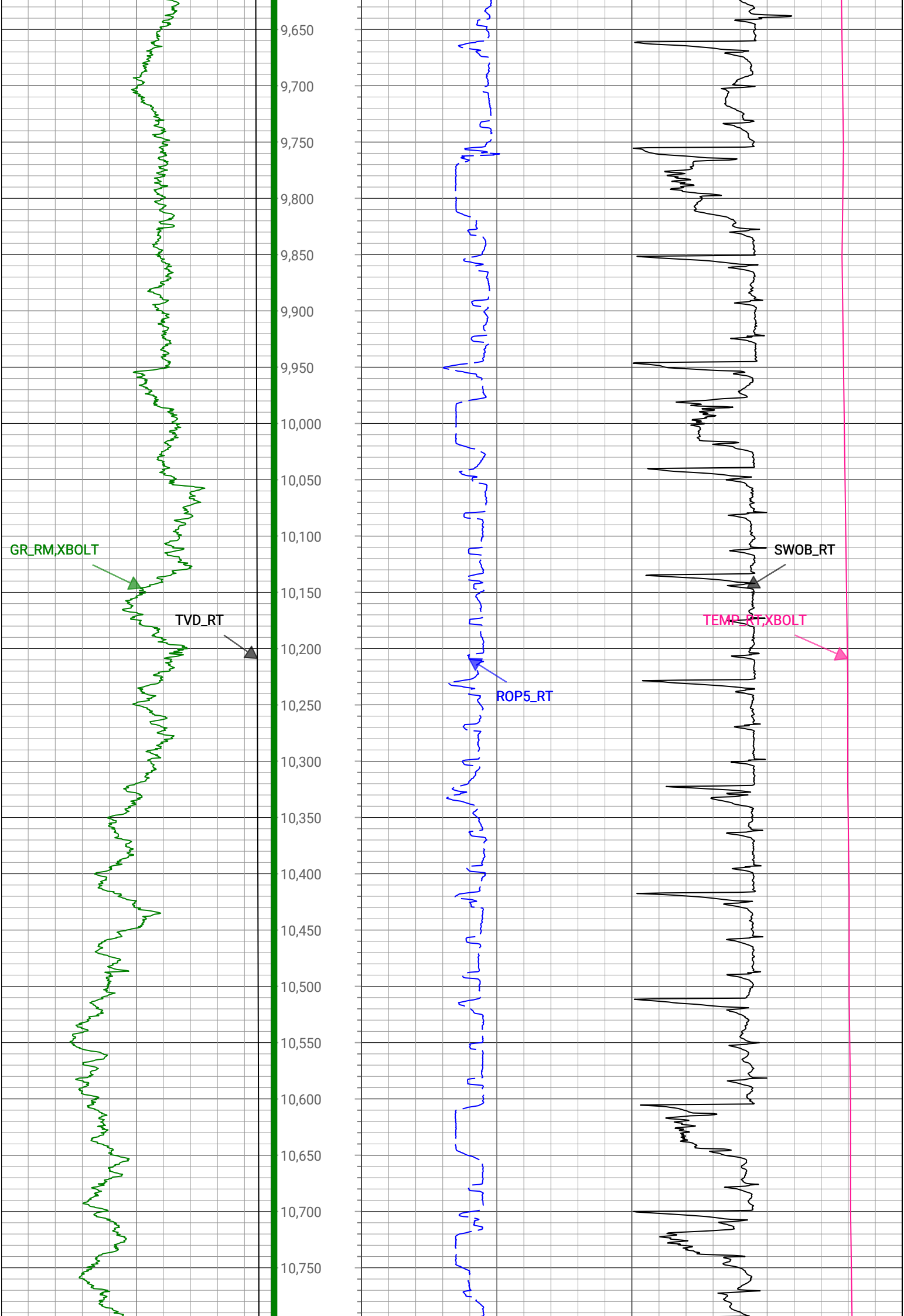


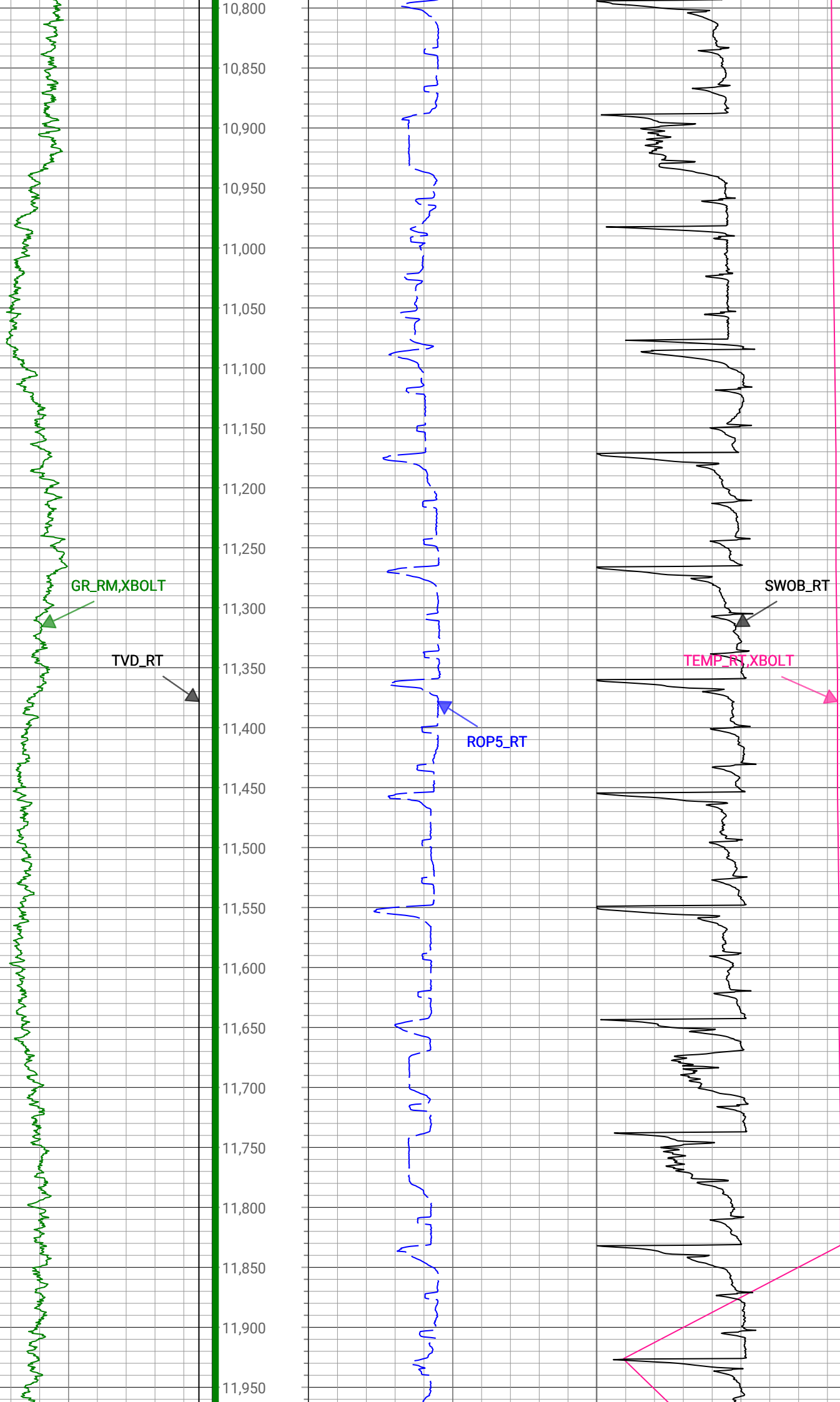


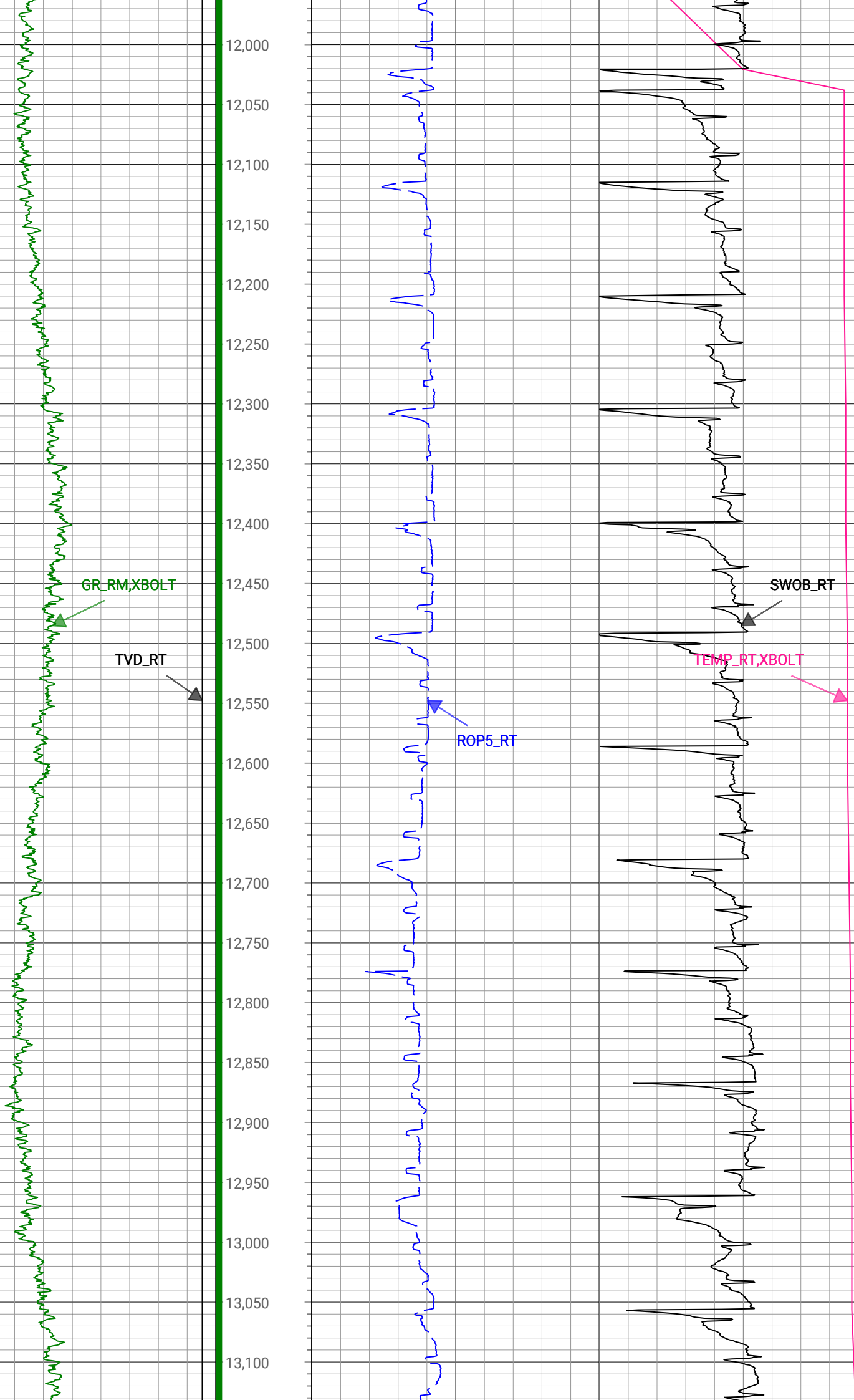


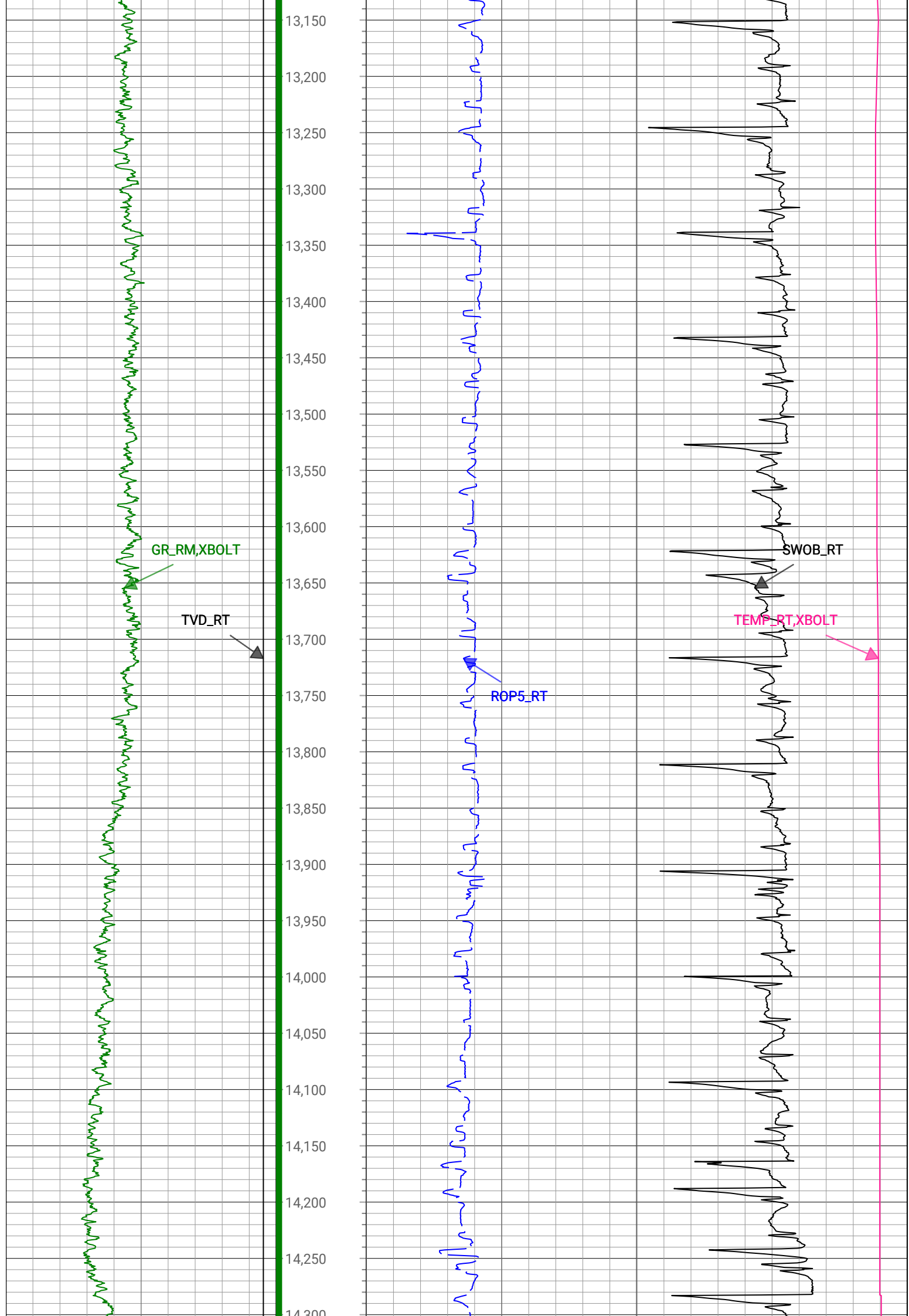


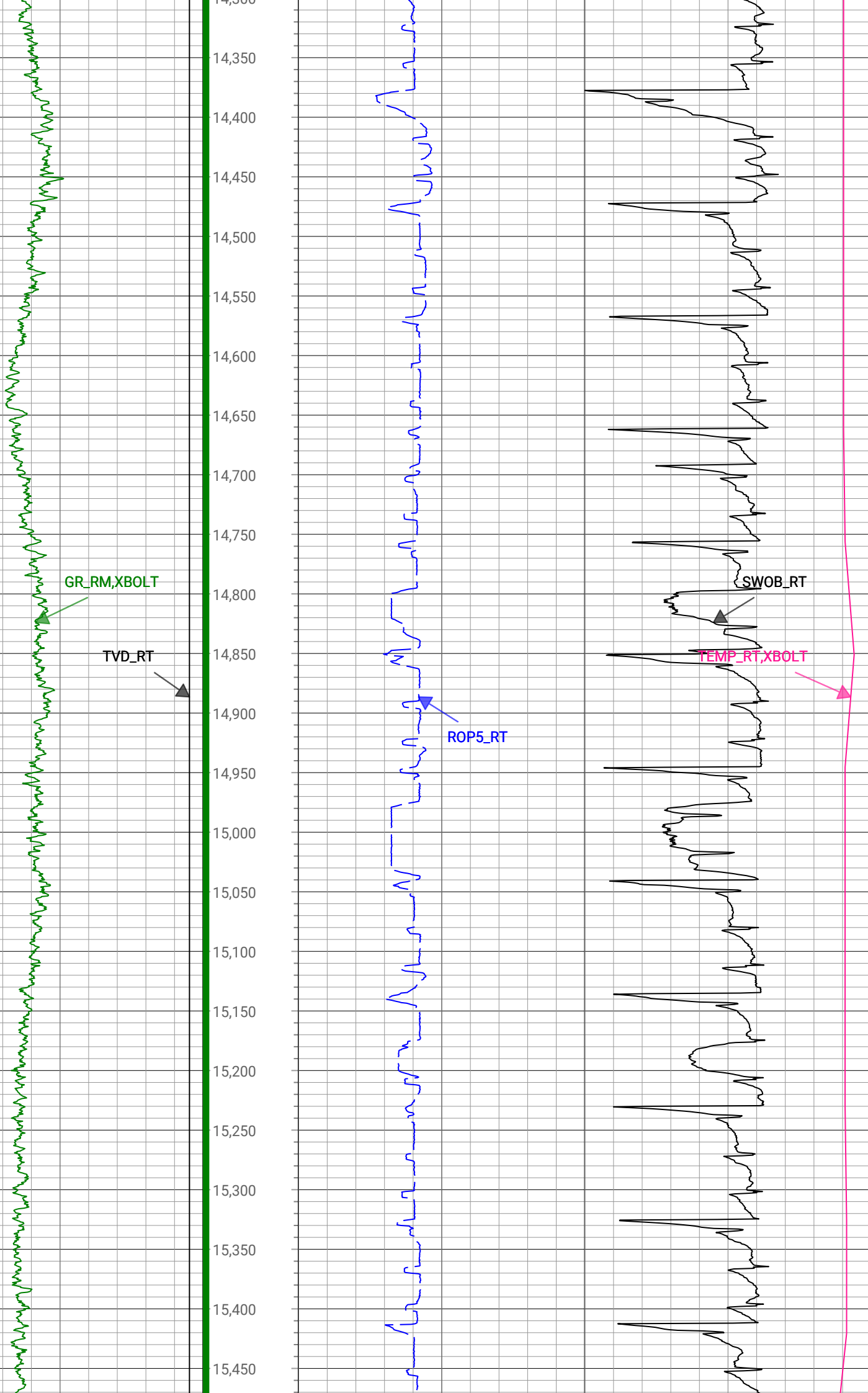


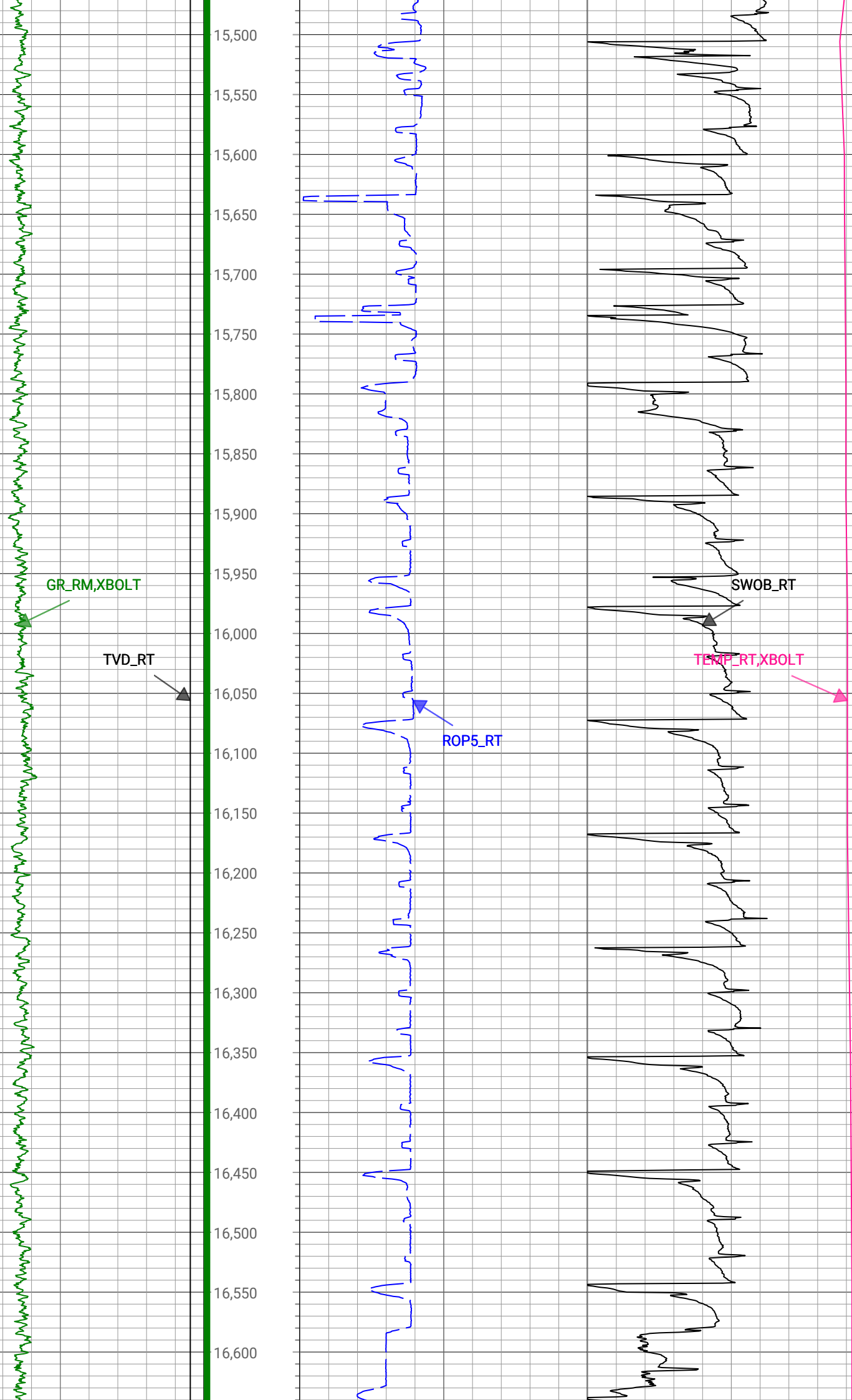


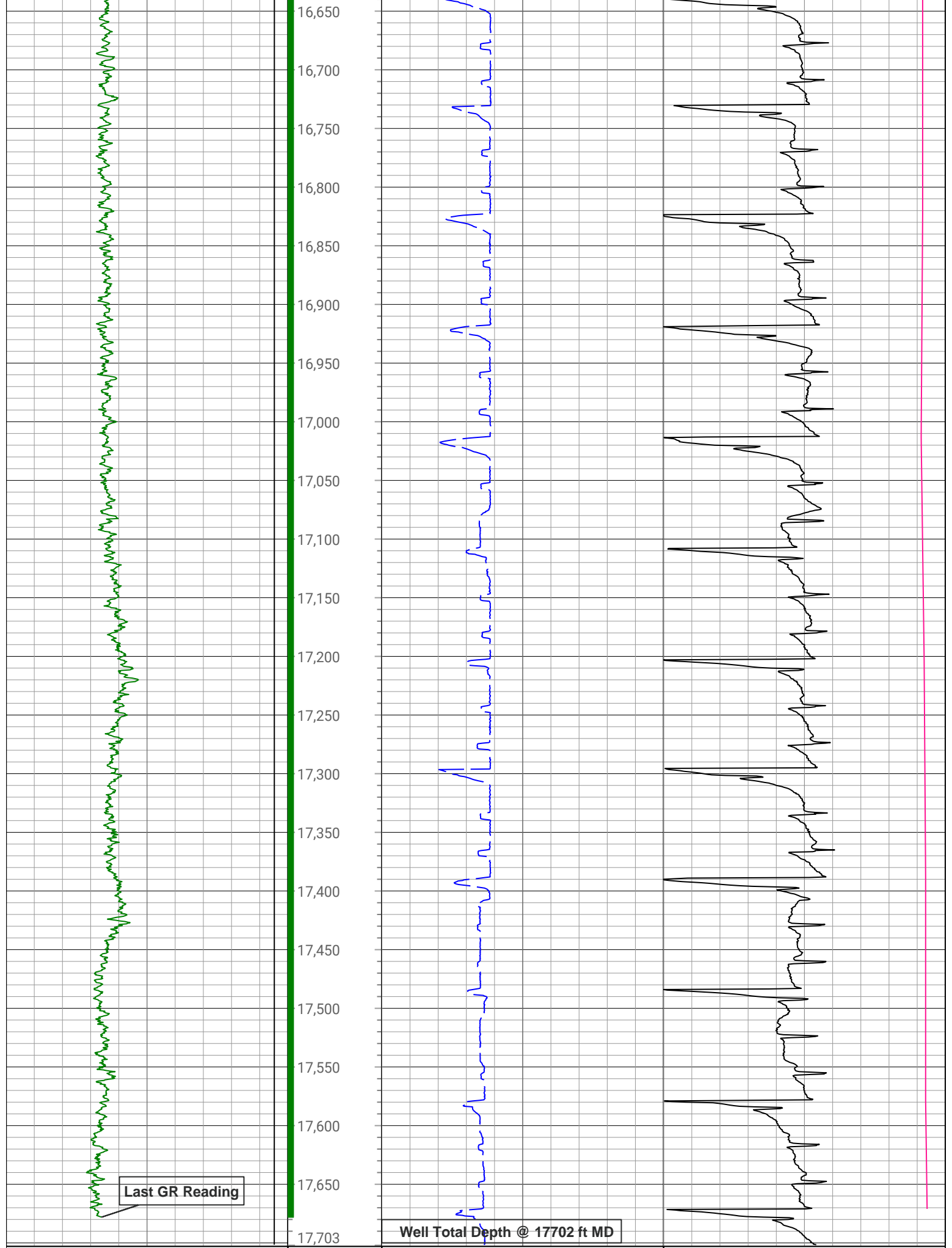












1,500	TVD_RT	7,500	Depth (ft)	0	ROP5_RT	1,000	0	TEMP_RT,XBOLT	300
ft, Borehole				ft/h, Borehole			degF, Borehole		
0	GR_RM,XBOLT	300					0	SWOB_RT	50
gAPI, Borehole							1000 lbf, Borehole		

North Reference: True North

Measured Depth:	0(ft)	Inclination:	0(deg)	Azimuth:	0(deg)
True Vertical Depth:	0(ft)	North Displacement:	0(ft)	East Displacement:	0(ft)

Geomagnetic Model:	HDGM 2022	Geomagnetic Date:	18-Mar-2022 18:00:00
Location B:	51942(nT)	Location G:	999.024(mgn)
Magnetic Dip:	66.5(deg)	Magnetic Dec:	7.35(deg)
Total Correction:	7.35		

Geomagnetic Model:	HDGM 2022	Geomagnetic Date:	17-Mar-2022 18:00:00
Location B:	51942(nT)	Location G:	999.024(mgn)
Magnetic Dip:	66.5(deg)	Magnetic Dec:	7.35(deg)
Total Correction:	7.35		

MD(ft)	Incl(deg)	Azim(deg)	TVD(ft)	V Sec(ft)	N/-S(ft)	E/-W(ft)	DLS (deg/100ft)	Closure Distance (ft)	Closure Azimuth (deg)	Tool Type
0	0	0	0	0.00	0	0	0.00			TIP
161.5	0.4	258.4	161.5	-0.55	-0.11	-0.55	0.25	0.56	258.4	MWD
252.5	0.2	277	252.5	-1.02	-0.16	-1.02	0.24	1.03	261.21	MWD
344.5	0.4	281.1	344.5	-1.49	-0.08	-1.5	0.22	1.5	267.07	MWD
433.5	0.4	307.1	433.49	-2.05	0.17	-2.05	0.2	2.06	274.77	MWD
522.5	0.1	296.9	522.49	-2.38	0.39	-2.37	0.34	2.4	279.44	MWD
612.5	0.5	309.2	612.49	-2.76	0.68	-2.74	0.45	2.82	283.88	MWD
701.5	0.7	52	701.49	-2.65	1.26	-2.61	1.06	2.9	295.7	MWD
791.5	0.5	22.7	791.48	-2.08	1.96	-2.03	0.4	2.82	314	MWD
880.5	0.2	70.7	880.48	-1.8	2.37	-1.73	0.44	2.93	323.83	MWD
970.5	0.2	125	970.48	-1.52	2.33	-1.45	0.2	2.75	328.03	MWD
1059.5	0.6	321.5	1059.48	-1.69	2.6	-1.62	0.89	3.07	328.17	MWD
1148.5	0.4	334.2	1148.48	-2.13	3.25	-2.04	0.26	3.84	327.85	MWD
1237.5	0.6	320.6	1237.47	-2.58	3.89	-2.47	0.26	4.61	327.55	MWD
1327.5	0.8	266.1	1327.47	-3.52	4.21	-3.4	0.74	5.41	321.09	MWD
1416.5	2.2	264.6	1416.44	-5.83	4.01	-5.72	1.57	6.98	305.02	MWD
1505.5	3	268.4	1505.34	-9.85	3.78	-9.75	0.92	10.46	291.2	MWD
1606.5	4.5	266.7	1606.12	-16.44	3.48	-16.35	1.49	16.71	282.02	MWD
1779	7.18	275.33	1777.72	-33.94	4.09	-33.84	1.63	34.09	276.89	MWD
1873	8.84	280.66	1870.8	-46.94	5.97	-46.79	1.93	47.17	277.28	MWD
1968	10.89	268.04	1964.4	-63.11	7.02	-62.93	3.12	63.32	276.36	MWD
2063	10.64	265.61	2057.73	-80.79	6.04	-80.65	0.55	80.87	274.28	MWD
2158	11.34	265.06	2150.98	-98.79	4.56	-98.7	0.75	98.8	272.65	MWD
2252	11.72	263.75	2243.09	-117.42	2.73	-117.39	0.49	117.43	271.33	MWD
2347	13.72	265.2	2335.75	-138.18	0.73	-138.21	2.13	138.22	270.3	MWD
2441	16.98	264.43	2426.39	-162.88	-1.53	-162.99	3.47	163	269.46	MWD
2536	19.78	264.53	2516.53	-192.6	-4.41	-192.8	2.95	192.85	268.69	MWD
2630	22.59	263.33	2604.17	-226.25	-8.02	-226.58	3.02	226.72	267.97	MWD


2721	23.34	260.67	2687.96	-261.25	-12.98	-261.72	1.41	262.05	267.16	Manual
2816	24.78	259.71	2774.7	-299.2	-19.58	-299.89	1.57	300.52	266.26	Manual
2911	25.17	260.71	2860.82	-338.52	-26.4	-339.41	0.61	340.44	265.55	Manual
3005	25.4	260.57	2945.81	-377.93	-32.93	-379.03	0.25	380.45	265.03	Manual
3100	24.57	261.14	3031.92	-417.34	-39.31	-418.64	0.91	420.48	264.64	Manual
3195	24.47	261.23	3118.36	-456.12	-45.35	-457.6	0.11	459.84	264.34	Manual
3290	24.27	260.59	3204.89	-494.63	-51.55	-496.31	0.35	498.98	264.07	Manual
3385	24.07	261.17	3291.56	-532.84	-57.71	-534.71	0.33	537.82	263.84	Manual
3480	23.72	261.17	3378.42	-570.68	-63.62	-572.74	0.37	576.26	263.66	Manual
3574	23.03	260.51	3464.71	-607.32	-69.55	-609.56	0.79	613.51	263.49	Manual
3669	23.5	262.56	3551.98	-644.25	-75.07	-646.67	0.99	651.01	263.38	Manual
3764	23.01	260.97	3639.26	-681.2	-80.44	-683.79	0.84	688.5	263.29	Manual
3858	23.59	263.73	3725.6	-717.89	-85.37	-720.63	1.31	725.67	263.24	Manual
3953	23.31	262.36	3812.76	-755.27	-89.95	-758.15	0.65	763.47	263.23	Manual
4047	23.32	262.23	3899.08	-791.98	-94.94	-795.02	0.06	800.67	263.19	Manual
4142	23.79	262.39	3986.16	-829.44	-100.02	-832.64	0.5	838.63	263.15	Manual
4237	22.86	262.13	4073.4	-866.55	-105.08	-869.92	0.98	876.24	263.11	Manual
4331	22.38	261.4	4160.17	-902.17	-110.26	-905.7	0.59	912.38	263.06	Manual
4426	23.94	262.56	4247.51	-939	-115.46	-942.69	1.71	949.74	263.02	Manual
4521	24.66	262.44	4334.09	-977.6	-120.56	-981.45	0.76	988.83	263	Manual
4616	24.93	264.21	4420.34	-1017.02	-125.19	-1021.02	0.83	1028.67	263.01	Manual
4710	24.05	263.01	4505.88	-1055.6	-129.52	-1059.74	1.08	1067.63	263.03	Manual
4805	24.52	262.55	4592.47	-1094.21	-134.43	-1098.5	0.53	1106.7	263.02	Manual
4900	24.43	263.76	4678.94	-1133.13	-139.12	-1137.58	0.54	1146.05	263.03	Manual
4995	24.05	264.95	4765.56	-1171.82	-142.96	-1176.39	0.65	1185.04	263.07	Manual
5089	24.75	263.05	4851.17	-1210.3	-147.03	-1215	1.12	1223.87	263.1	Manual
5184	23.8	262.36	4937.77	-1248.88	-151.98	-1253.74	1.04	1262.92	263.09	Manual
5279	22.8	262.69	5025.02	-1285.98	-156.87	-1291	1.06	1300.5	263.07	Manual
5373	24.63	263.16	5111.08	-1323.35	-161.52	-1328.52	1.96	1338.3	263.07	Manual
5468	24.93	262.88	5197.33	-1362.72	-166.36	-1368.04	0.34	1378.12	263.07	Manual
5563	23.47	261.86	5283.98	-1401.15	-171.52	-1406.64	1.6	1417.05	263.05	Manual
5657	24.14	262.77	5369.98	-1438.59	-176.59	-1444.23	0.81	1454.99	263.03	Manual
5752	23.35	261.53	5456.94	-1476.32	-181.81	-1482.13	0.98	1493.24	263.01	Manual
5847	23.98	262.69	5543.95	-1513.92	-187.04	-1519.9	0.82	1531.36	262.98	Manual
5941	24.24	262.28	5629.75	-1551.83	-192.06	-1557.97	0.33	1569.76	262.97	Manual
6036	23.1	263.36	5716.76	-1589.52	-196.84	-1595.8	1.28	1607.9	262.97	Manual
6131	24.95	262.92	5803.52	-1627.77	-201.46	-1634.2	1.96	1646.57	262.97	Manual
6226	24.24	263.46	5889.9	-1666.87	-206.15	-1673.46	0.78	1686.11	262.98	Manual
6321	20.21	262.57	5977.83	-1702.4	-210.5	-1709.12	4.26	1722.04	262.98	Manual
6415	14.01	261.93	6067.62	-1729.67	-214.2	-1736.51	6.6	1749.68	262.97	Manual
6510	7.9	253.84	6160.85	-1747.24	-217.63	-1754.19	6.62	1767.64	262.93	Manual
6605	6.09	219.04	6255.18	-1756.52	-223.37	-1763.64	4.76	1777.73	262.78	Manual
6699	6.29	162.58	6348.72	-1757.87	-232.16	-1765.24	6.22	1780.44	262.51	Manual
6794	9.53	104.92	6442.93	-1748.5	-239.16	-1756.07	8.55	1772.28	262.24	Manual
6889	15.4	106.97	6535.65	-1728.67	-244.88	-1736.38	6.2	1753.57	261.97	Manual
6983	23.62	101.08	6624.19	-1698	-252.15	-1705.91	8.98	1724.45	261.59	Manual
7078	31.53	94.78	6708.35	-1654.34	-257.89	-1662.4	8.86	1682.29	261.18	Manual
7172	36.66	90.78	6786.17	-1601.7	-260.32	-1609.81	5.95	1630.72	260.81	Manual
7267	47.06	93.68	6856.84	-1538.41	-262.95	-1546.57	11.13	1568.76	260.35	Manual
7361	54.65	94.05	6916.13	-1465.62	-267.87	-1473.89	8.08	1498.03	259.7	Manual

7456	61.54	91.5	6966.32	-1385.04	-271.7	-1393.39	7.6	1419.63	258.97	Manual
7551	70.66	90.85	7004.77	-1298.28	-273.46	-1306.65	9.62	1334.96	258.18	Manual
7645	80.49	93.29	7028.16	-1207.37	-276.79	-1215.79	10.75	1246.9	257.17	Manual
7740	82.77	91.99	7041.99	-1113.4	-281.12	-1121.91	2.76	1156.59	255.93	Manual
7835	82.57	91.72	7054.11	-1019.18	-284.17	-1027.74	0.35	1066.3	254.54	Manual
7929	85.83	91.53	7063.6	-925.68	-286.82	-934.27	3.47	977.3	252.93	Manual
8024	85.63	89.71	7070.68	-830.96	-287.84	-839.54	1.92	887.51	251.08	Manual
8119	86.9	89.35	7076.87	-736.23	-287.07	-744.75	1.39	798.16	248.92	Manual
8213	86.65	89.14	7082.16	-642.46	-285.83	-650.9	0.35	710.9	246.29	Manual
8308	87.18	89.17	7087.27	-547.68	-284.43	-556.05	0.56	624.58	242.91	Manual
8403	87.11	88.85	7092	-452.9	-282.79	-461.18	0.34	540.98	238.48	Manual
8497	86.55	89.14	7097.2	-359.15	-281.14	-367.34	0.67	462.58	232.57	Manual
8592	88.24	89.09	7101.52	-264.34	-279.68	-272.46	1.78	390.45	224.25	Manual
8687	88.43	89.91	7104.28	-169.45	-278.85	-177.5	0.89	330.55	212.48	Manual
8782	88.09	88.99	7107.16	-74.56	-277.94	-82.55	1.03	289.94	196.54	Manual
8971	86.97	89.84	7115.31	114.12	-276.01	106.26	0.74	295.76	158.94	Manual
9066	86.86	89.64	7120.42	208.93	-275.58	201.12	0.24	341.17	143.88	Manual
9160	86.8	89.6	7125.62	302.72	-274.96	294.98	0.08	403.25	132.99	Manual
9255	86.71	89.73	7130.99	397.51	-274.4	389.82	0.17	476.72	125.14	Manual
9350	86.96	89.53	7136.24	492.31	-273.79	484.67	0.34	556.66	119.46	Manual
9444	86.58	89.99	7141.54	586.11	-273.4	578.52	0.63	639.87	115.29	Manual
9539	87.53	89.5	7146.42	680.93	-272.97	673.4	1.12	726.62	112.07	Manual
9634	86.94	89.75	7151	775.76	-272.35	768.28	0.67	815.13	109.52	Manual
9728	87.37	89.52	7155.66	869.59	-271.76	862.16	0.52	903.98	107.49	Manual
9822	86.61	89.73	7160.6	963.4	-271.14	956.03	0.84	993.74	105.83	Manual
9916	86.57	89.6	7166.19	1057.18	-270.59	1049.86	0.14	1084.17	104.45	Manual
10011	87.07	89.67	7171.46	1151.97	-269.99	1144.72	0.53	1176.12	103.27	Manual
10105	86.27	89.75	7176.92	1245.76	-269.51	1238.55	0.86	1267.54	102.28	Manual
10199	86.01	89.89	7183.25	1339.5	-269.22	1332.34	0.31	1359.27	101.42	Manual
10293	86.1	89.77	7189.72	1433.23	-268.94	1426.12	0.16	1451.25	100.68	Manual
10387	86.26	89.45	7195.98	1526.96	-268.3	1519.91	0.38	1543.41	100.01	Manual
10481	86.17	89.29	7202.18	1620.68	-267.27	1613.7	0.19	1635.68	99.4	Manual
10575	86.2	89.67	7208.44	1714.41	-266.42	1707.48	0.4	1728.14	98.87	Manual
10670	86.44	89.57	7214.54	1809.15	-265.79	1802.29	0.27	1821.78	98.39	Manual
10764	88.15	88.93	7218.97	1902.96	-264.56	1896.17	1.94	1914.54	97.94	Manual
10858	89.8	89.29	7220.65	1996.85	-263.1	1990.14	1.8	2007.46	97.53	Manual
10953	90.08	89.1	7220.75	2091.77	-261.77	2085.13	0.36	2101.5	97.16	Manual
11048	90.16	89.31	7220.55	2186.68	-260.45	2180.12	0.24	2195.62	96.81	Manual
11142	90.58	89.69	7219.95	2280.61	-259.63	2274.11	0.6	2288.89	96.51	Manual
11237	90.47	89.46	7219.08	2375.55	-258.92	2369.11	0.27	2383.21	96.24	Manual
11331	90.33	89.28	7218.42	2469.47	-257.89	2463.1	0.24	2476.56	95.98	Manual
11426	90.6	89.37	7217.65	2564.39	-256.77	2558.09	0.3	2570.94	95.73	Manual
11520	90.53	89.17	7216.72	2658.31	-255.57	2652.08	0.23	2664.36	95.5	Manual
11614	90.74	88.94	7215.68	2752.2	-254.02	2746.06	0.33	2757.78	95.29	Manual
11708	90.46	89.57	7214.7	2846.12	-252.8	2840.04	0.73	2851.27	95.09	Manual
11802	89.61	90.74	7214.64	2940.08	-253.06	2934.04	1.54	2944.93	94.93	Manual
11897	90.14	90.46	7214.85	3035.07	-254.05	3029.04	0.63	3039.67	94.79	Manual
11990	90.07	90.43	7214.68	3128.05	-254.77	3122.03	0.08	3132.41	94.67	Manual
12085	89.96	90.36	7214.65	3223.02	-255.43	3217.03	0.14	3227.16	94.54	Manual
12179	90.33	90.18	7214.41	3317	-255.87	3311.03	0.44	3320.9	94.42	Manual

12273	89.66	90.49	7214.42	3410.97	-256.42	3405.03	0.79	3414.67	94.31	Manual
12367	90.1	90.25	7214.62	3504.95	-257.03	3499.02	0.53	3508.45	94.2	Manual
12460	89.6	90.67	7214.86	3597.93	-257.77	3592.02	0.7	3601.26	94.1	Manual
12554	90.07	90.63	7215.13	3691.91	-258.84	3686.01	0.5	3695.09	94.02	Manual
12648	90.18	90.18	7214.93	3785.89	-259.5	3780.01	0.49	3788.91	93.93	Manual
12743	90.22	90.17	7214.6	3880.86	-259.79	3875.01	0.04	3883.71	93.84	Manual
12837	90.07	90.15	7214.36	3974.83	-260.06	3969.01	0.16	3977.52	93.75	Manual
12931	90.02	90.03	7214.28	4068.79	-260.21	4063.01	0.14	4071.33	93.66	Manual
13025	89.99	89.73	7214.28	4162.75	-260.01	4157.01	0.32	4165.13	93.58	Manual
13120	89.97	90.21	7214.31	4257.71	-259.96	4252.01	0.51	4259.95	93.5	Manual
13214	90.19	90.29	7214.18	4351.68	-260.37	4346.01	0.25	4353.8	93.43	Manual
13308	90.17	90.26	7213.88	4445.65	-260.82	4440.01	0.04	4447.66	93.36	Manual
13403	90.09	90.34	7213.67	4540.63	-261.32	4535	0.12	4542.53	93.3	Manual
13497	90.35	90.25	7213.31	4634.6	-261.8	4629	0.29	4636.4	93.24	Manual
13592	90.35	90.41	7212.73	4729.57	-262.35	4724	0.17	4731.28	93.18	Manual
13686	89.79	90.57	7212.61	4823.55	-263.15	4818	0.62	4825.18	93.13	Manual
13780	89.69	90.62	7213.04	4917.54	-264.13	4911.99	0.12	4919.09	93.08	Manual
13874	90.11	89.39	7213.2	5011.5	-264.14	5005.99	1.38	5012.95	93.02	Manual
13969	90.3	90.31	7212.86	5106.45	-263.89	5100.99	0.99	5107.81	92.96	Manual
14063	89.83	90.49	7212.75	5200.43	-264.54	5194.98	0.54	5201.71	92.92	Manual
14158	89.94	90.3	7212.95	5295.4	-265.2	5289.98	0.23	5296.62	92.87	Manual
14253	90.15	89.99	7212.87	5390.37	-265.44	5384.98	0.39	5391.52	92.82	Manual
14347	90.16	90.96	7212.62	5484.35	-266.22	5478.97	1.03	5485.44	92.78	Manual
14441	90.09	90.22	7212.41	5578.33	-267.19	5572.97	0.79	5579.37	92.74	Manual
14535	90.36	90.17	7212.04	5672.3	-267.51	5666.97	0.29	5673.28	92.7	Manual
14630	89.76	90.22	7211.94	5767.27	-267.83	5761.97	0.63	5768.19	92.66	Manual
14724	89.58	90.45	7212.48	5861.25	-268.38	5855.96	0.31	5862.11	92.62	Manual
14818	90.18	90.52	7212.68	5955.23	-269.18	5949.96	0.64	5956.04	92.59	Manual
14912	89.61	90.24	7212.85	6049.2	-269.8	6043.96	0.68	6049.98	92.56	Manual
15006	89.84	89.6	7213.3	6143.16	-269.67	6137.95	0.72	6143.88	92.52	Manual
15100	90.06	89.15	7213.39	6237.08	-268.64	6231.95	0.53	6237.74	92.47	Manual
15194	90.09	89.29	7213.26	6331	-267.36	6325.94	0.15	6331.59	92.42	Manual
15289	90.02	89.44	7213.17	6425.93	-266.31	6420.93	0.17	6426.45	92.37	Manual
15382	90.14	89.32	7213.04	6518.85	-265.3	6513.93	0.18	6519.33	92.33	Manual
15477	90.03	89.63	7212.9	6613.79	-264.43	6608.92	0.35	6614.21	92.29	Manual
15571	89.52	89.48	7213.27	6707.72	-263.7	6702.92	0.57	6708.11	92.25	Manual
15665	90.25	89.19	7213.46	6801.64	-262.61	6796.91	0.84	6801.98	92.21	Manual
15759	90.45	89.04	7212.89	6895.55	-261.16	6890.9	0.27	6895.85	92.17	Manual
15853	90.18	88.96	7212.37	6989.45	-259.52	6984.88	0.3	6989.7	92.13	Manual
15947	89.9	89.29	7212.3	7083.36	-258.08	7078.87	0.46	7083.58	92.09	Manual
16041	89.89	89.14	7212.48	7177.28	-256.8	7172.86	0.16	7177.46	92.05	Manual
16136	89.96	89.07	7212.6	7272.18	-255.31	7267.85	0.1	7272.34	92.01	Manual
16229	89.97	89.24	7212.66	7365.09	-253.94	7360.84	0.18	7365.22	91.98	Manual
16323	89.98	89.14	7212.7	7459.01	-252.61	7454.83	0.11	7459.11	91.94	Manual
16418	89.98	89.22	7212.73	7553.92	-251.25	7549.82	0.08	7554	91.91	Manual
16512	90.04	89.15	7212.71	7647.83	-249.92	7643.81	0.1	7647.9	91.87	Manual
16606	90.3	89.24	7212.44	7741.75	-248.59	7737.8	0.29	7741.8	91.84	Manual
16699	90.08	89.94	7212.13	7834.69	-247.93	7830.8	0.79	7834.72	91.81	Manual
16793	90.25	89.67	7211.86	7928.64	-247.61	7924.8	0.34	7928.67	91.79	Manual
16888	90.12	89.94	7211.55	8023.59	-247.29	8019.8	0.32	8023.61	91.77	Manual

16888	90.12	89.94	7211.55	8025.59	-247.29	8019.8	0.32	8025.61	91.77	Manual
16982	89.88	89.92	7211.55	8117.55	-247.17	8113.8	0.26	8117.56	91.74	Manual
17076	90.04	89.76	7211.61	8211.5	-246.91	8207.8	0.24	8211.51	91.72	Manual
17170	90.21	89.72	7211.41	8305.45	-246.48	8301.8	0.19	8305.45	91.7	Manual
17265	89.97	89.89	7211.26	8400.4	-246.16	8396.8	0.31	8400.4	91.68	Manual
17359	90.12	89.43	7211.19	8494.34	-245.6	8490.79	0.51	8494.34	91.66	Manual
17453	90.09	89.84	7211.01	8588.29	-245	8584.79	0.44	8588.29	91.63	Manual
17547	90.22	89.54	7210.76	8682.23	-244.49	8678.79	0.35	8682.23	91.61	Manual
17641	90.32	89.57	7210.32	8776.17	-243.76	8772.79	0.11	8776.17	91.59	Manual
17702	90.32	89.57	7209.98	8837.13	-243.31	8833.78	0	8837.13	91.58	Manual

Company:	PDC Energy Inc
Well:	Bost Farm 40N-8B-L2
Field Name:	Wattenberg
Country Name:	United States
State Name:	Colorado
County Name:	Weld



Xbolt GAMMA RAY
1in/100ft Measured Depth
Final Print
Recorded Mode