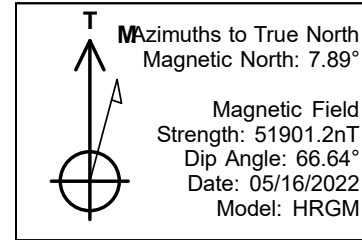


# PDC Energy Inc. DJ Basin

Bost Farm 40C-8-L2  
 Bost Farms 5-7 Pad SEC.7-T5N-R66W  
 North American Datum 1983 , US State Plane 1983, Colorado Northern Zone  
 Ground Elevation: 4874.0  
 +N/-S +E/-W Northing Easting Latitude Longitude Slot  
 0.0 0.0 1394603.36 3187156.52 40.414641 -104.827857  
 Patterson 272 - RKB 28WELL @ 4902ft (Patterson 272 - RKB 28')

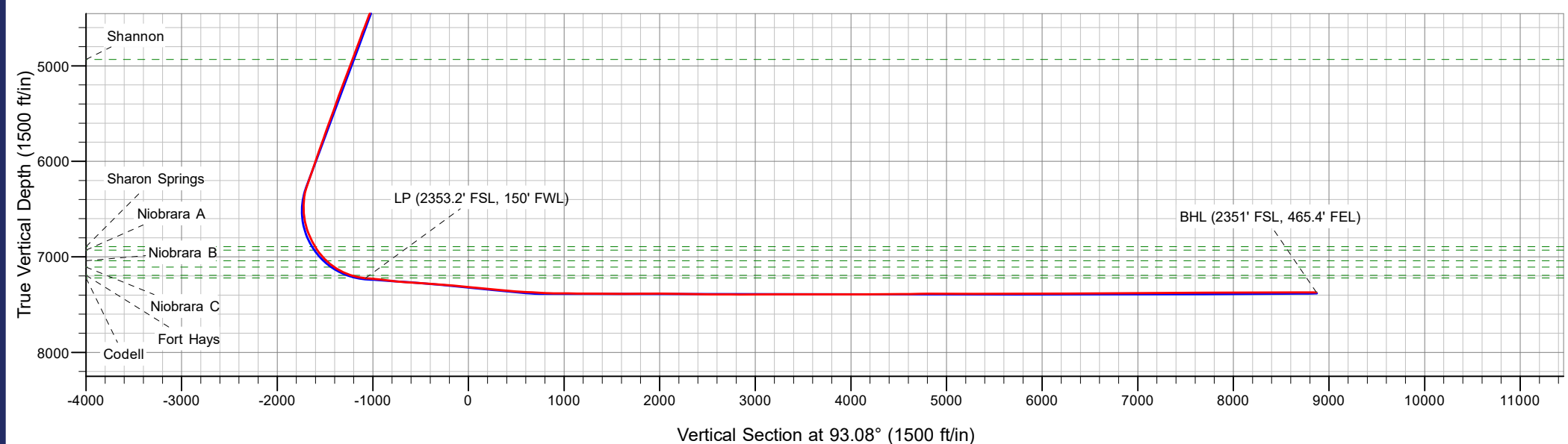
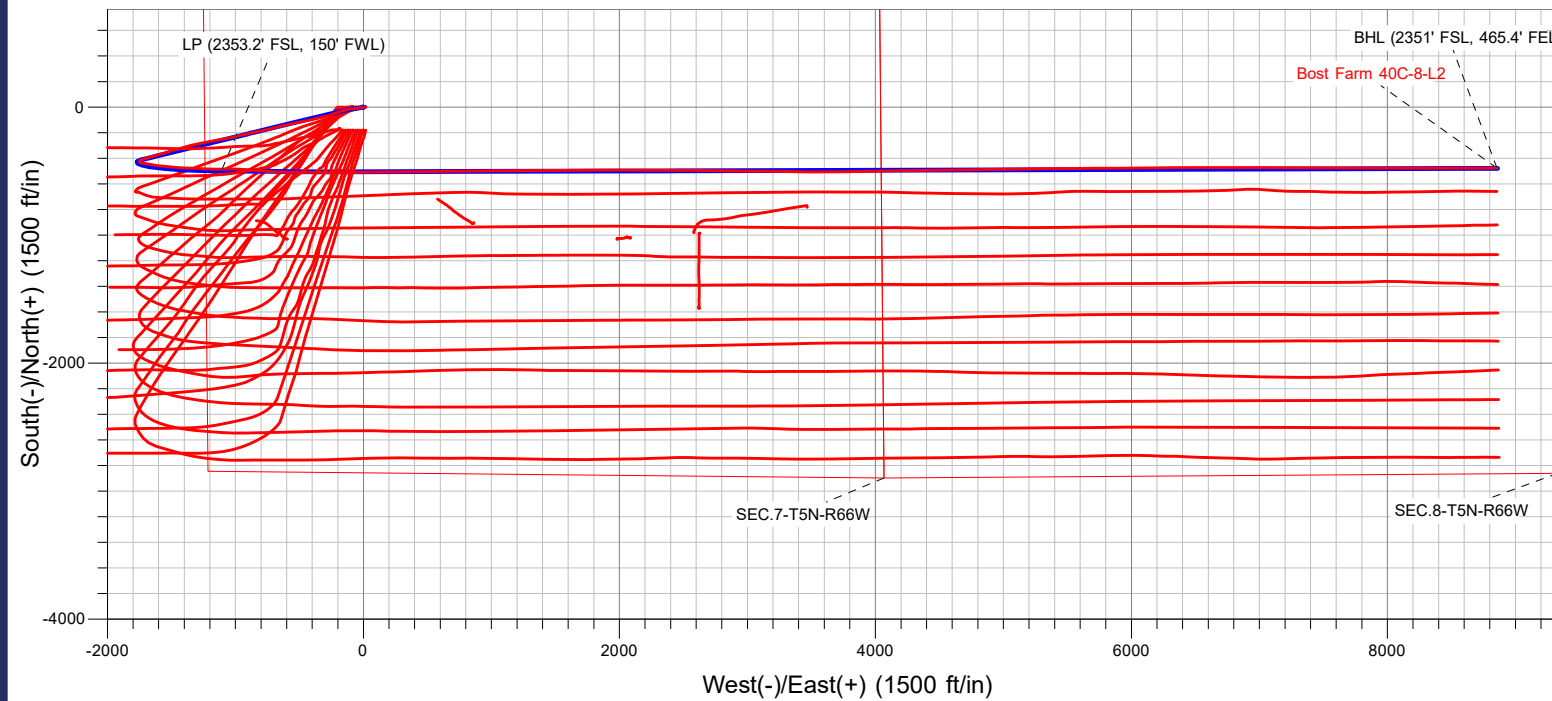


Bost Farms 5-7 Pad SEC.7-T5N-R66W  
 Bost Farm 40C-8-L2  
 40C-8-L2\_Final Surveys  
 14:57, June 13 2022



| ANNOTATIONS |        |                             |
|-------------|--------|-----------------------------|
| MD          | TVD    | Annotation                  |
| 7885.3      | 7222.3 | LP (2353.2' FSL, 150' FWL)  |
| 17853.0     | 7371.3 | BHL (2351' FSL, 465.4' FEL) |

**FINAL SURVEY**  
**Projected Bottom Hole Location**  
**17853' MD / 7371.3' TVD**  
**90.32° INC / 89.91° AZM**  
**2351' FSL / 465.4' FEL**





# **PDC Energy Inc. DJ Basin**

**SEC.7-T5N-R66W**

**Bost Farms 5-7 Pad SEC.7-T5N-R66W**

**Bost Farm 40C-8-L2**

**Bost Farm 40C-8-L2 Wellbore #1**

**Design: 40C-8-L2\_Final Surveys**

## **Standard Survey Report**

**13 June, 2022**



|                  |                                   |                                     |   |
|------------------|-----------------------------------|-------------------------------------|---|
| <b>Company:</b>  | PDC Energy Inc. DJ Basin          | <b>Local Co-ordinate Reference:</b> | Well Bost Farm 40C-8-L2                 |
| <b>Project:</b>  | SEC.7-T5N-R66W                    | <b>TVD Reference:</b>               | WELL @ 4902ft (Patterson 272 - RKB 28') |
| <b>Site:</b>     | Bost Farms 5-7 Pad SEC.7-T5N-R66W | <b>MD Reference:</b>                | WELL @ 4902ft (Patterson 272 - RKB 28') |
| <b>Well:</b>     | Bost Farm 40C-8-L2                | <b>North Reference:</b>             | True                                    |
| <b>Wellbore:</b> | Bost Farm 40C-8-L2 Wellbore #1    | <b>Survey Calculation Method:</b>   | Minimum Curvature                       |
| <b>Design:</b>   | 40C-8-L2_Final Surveys            | <b>Database:</b>                    | US_EDM                                  |

|                    |                                 |                      |                             |
|--------------------|---------------------------------|----------------------|-----------------------------|
| <b>Project</b>     | SEC.7-T5N-R66W, Weld County, Co |                      |                             |
| <b>Map System:</b> | US State Plane 1983             | <b>System Datum:</b> | Mean Sea Level              |
| <b>Geo Datum:</b>  | North American Datum 1983       |                      |                             |
| <b>Map Zone:</b>   | Colorado Northern Zone          |                      | Using geodetic scale factor |

|                              |                                   |                     |                   |                          |             |
|------------------------------|-----------------------------------|---------------------|-------------------|--------------------------|-------------|
| <b>Site</b>                  | Bost Farms 5-7 Pad SEC.7-T5N-R66W |                     |                   |                          |             |
| <b>Site Position:</b>        |                                   | <b>Northing:</b>    | 1,394,603.55 usft | <b>Latitude:</b>         | 40.414641   |
| <b>From:</b>                 | Lat/Long                          | <b>Easting:</b>     | 3,187,178.01 usft | <b>Longitude:</b>        | -104.827780 |
| <b>Position Uncertainty:</b> | 0.0 ft                            | <b>Slot Radius:</b> | 13-3/16 "         | <b>Grid Convergence:</b> | 0.43 °      |

|                             |                    |        |                            |                   |                      |             |
|-----------------------------|--------------------|--------|----------------------------|-------------------|----------------------|-------------|
| <b>Well</b>                 | Bost Farm 40C-8-L2 |        |                            |                   |                      |             |
| <b>Well Position</b>        | <b>+N/-S</b>       | 0.0 ft | <b>Northing:</b>           | 1,394,603.36 usft | <b>Latitude:</b>     | 40.414641   |
|                             | <b>+E/-W</b>       | 0.0 ft | <b>Easting:</b>            | 3,187,156.52 usft | <b>Longitude:</b>    | -104.827857 |
| <b>Position Uncertainty</b> |                    | 0.0 ft | <b>Wellhead Elevation:</b> | ft                | <b>Ground Level:</b> | 4,874.0 ft  |

|                  |                                |                    |                        |                      |                            |
|------------------|--------------------------------|--------------------|------------------------|----------------------|----------------------------|
| <b>Wellbore</b>  | Bost Farm 40C-8-L2 Wellbore #1 |                    |                        |                      |                            |
| <b>Magnetics</b> | <b>Model Name</b>              | <b>Sample Date</b> | <b>Declination (°)</b> | <b>Dip Angle (°)</b> | <b>Field Strength (nT)</b> |
|                  | HRGM                           | 05/16/2022         | 7.89                   | 66.64                | 51,901.24243390            |

|                          |                              |                   |                   |                      |     |
|--------------------------|------------------------------|-------------------|-------------------|----------------------|-----|
| <b>Design</b>            | 40C-8-L2_Final Surveys       |                   |                   |                      |     |
| <b>Audit Notes:</b>      |                              |                   |                   |                      |     |
| <b>Version:</b>          | 1.0                          | <b>Phase:</b>     | ACTUAL            | <b>Tie On Depth:</b> | 0.0 |
| <b>Vertical Section:</b> | <b>Depth From (TVD) (ft)</b> | <b>+N/-S (ft)</b> | <b>+E/-W (ft)</b> | <b>Direction (°)</b> |     |
|                          | 0.0                          | 0.0               | 0.0               | 93.08                |     |

|                       |                |   |                  |                    |  |
|-----------------------|----------------|---|------------------|--------------------|--|
| <b>Survey Program</b> | <b>Date</b>    | 06/13/2022                              |                  |                    |  |
| <b>From (ft)</b>      | <b>To (ft)</b> | <b>Survey (Wellbore)</b>                | <b>Tool Name</b> | <b>Description</b> |  |
| 161.5                 | 17,853.0       | Surface (Bost Farm 40C-8-L2 Wellbore #1 | MWD              | MWD - Standard     |  |

|                            |                        |                    |                            |                   |                   |                              |                                |                               |                              |  |
|----------------------------|------------------------|--------------------|----------------------------|-------------------|-------------------|------------------------------|--------------------------------|-------------------------------|------------------------------|--|
| <b>Survey</b>              |                        |                    |                            |                   |                   |                              |                                |                               |                              |  |
| <b>Measured Depth (ft)</b> | <b>Inclination (°)</b> | <b>Azimuth (°)</b> | <b>Vertical Depth (ft)</b> | <b>+N/-S (ft)</b> | <b>+E/-W (ft)</b> | <b>Vertical Section (ft)</b> | <b>Dogleg Rate (°/100usft)</b> | <b>Build Rate (°/100usft)</b> | <b>Turn Rate (°/100usft)</b> |  |
| 0.0                        | 0.00                   | 0.00               | 0.0                        | 0.0               | 0.0               | 0.0                          | 0.00                           | 0.00                          | 0.00                         |  |
| 161.5                      | 0.40                   | 134.70             | 161.5                      | -0.4              | 0.4               | 0.4                          | 0.25                           | 0.25                          | 0.00                         |  |
| 252.5                      | 0.40                   | 152.20             | 252.5                      | -0.9              | 0.8               | 0.8                          | 0.13                           | 0.00                          | 19.23                        |  |
| 344.5                      | 0.10                   | 207.80             | 344.5                      | -1.3              | 0.9               | 1.0                          | 0.38                           | -0.33                         | 60.43                        |  |
| 433.5                      | 0.20                   | 230.30             | 433.5                      | -1.4              | 0.7               | 0.8                          | 0.13                           | 0.11                          | 25.28                        |  |
| 522.5                      | 0.20                   | 348.40             | 522.5                      | -1.4              | 0.6               | 0.7                          | 0.39                           | 0.00                          | 132.70                       |  |
| 612.5                      | 0.20                   | 262.60             | 612.5                      | -1.2              | 0.4               | 0.5                          | 0.30                           | 0.00                          | -95.33                       |  |
| 702.5                      | 0.40                   | 286.00             | 702.5                      | -1.2              | -0.1              | 0.0                          | 0.26                           | 0.22                          | 26.00                        |  |
| 787.5                      | 0.40                   | 313.46             | 787.5                      | -0.9              | -0.6              | -0.5                         | 0.22                           | 0.00                          | 32.30                        |  |
| <b>Fox Hills Aq Base</b>   |                        |                    |                            |                   |                   |                              |                                |                               |                              |  |
| 791.5                      | 0.40                   | 314.70             | 791.5                      | -0.9              | -0.6              | -0.5                         | 0.22                           | 0.05                          | 31.08                        |  |

|                  |                                   |                                     |   |
|------------------|-----------------------------------|-------------------------------------|---|
| <b>Company:</b>  | PDC Energy Inc. DJ Basin          | <b>Local Co-ordinate Reference:</b> | Well Bost Farm 40C-8-L2                 |
| <b>Project:</b>  | SEC.7-T5N-R66W                    | <b>TVD Reference:</b>               | WELL @ 4902ft (Patterson 272 - RKB 28') |
| <b>Site:</b>     | Bost Farms 5-7 Pad SEC.7-T5N-R66W | <b>MD Reference:</b>                | WELL @ 4902ft (Patterson 272 - RKB 28') |
| <b>Well:</b>     | Bost Farm 40C-8-L2                | <b>North Reference:</b>             | True                                    |
| <b>Wellbore:</b> | Bost Farm 40C-8-L2 Wellbore #1    | <b>Survey Calculation Method:</b>   | Minimum Curvature                       |
| <b>Design:</b>   | 40C-8-L2_Final Surveys            | <b>Database:</b>                    | US_EDM                                  |

### Survey

| Measured Depth (ft) | Inclination (°) | Azimuth (°) | Vertical Depth (ft) | +N/-S (ft) | +E/-W (ft) | Vertical Section (ft) | Dogleg Rate (°/100usft) | Build Rate (°/100usft) | Turn Rate (°/100usft) |
|---------------------|-----------------|-------------|---------------------|------------|------------|-----------------------|-------------------------|------------------------|-----------------------|
| 880.5               | 0.40            | 299.50      | 880.5               | -0.5       | -1.1       | -1.0                  | 0.12                    | 0.00                   | -17.08                |
| 970.5               | 0.80            | 282.00      | 970.5               | -0.2       | -2.0       | -1.9                  | 0.48                    | 0.44                   | -19.44                |
| 1,059.5             | 0.80            | 306.60      | 1,059.5             | 0.3        | -3.1       | -3.1                  | 0.38                    | 0.00                   | 27.64                 |
| 1,149.5             | 1.30            | 296.40      | 1,149.5             | 1.1        | -4.5       | -4.5                  | 0.59                    | 0.56                   | -11.33                |
| 1,238.5             | 2.00            | 244.90      | 1,238.4             | 0.9        | -6.8       | -6.8                  | 1.76                    | 0.79                   | -57.87                |
| 1,328.5             | 3.90            | 254.70      | 1,328.3             | -0.6       | -11.2      | -11.1                 | 2.18                    | 2.11                   | 10.89                 |
| 1,417.5             | 5.40            | 254.40      | 1,417.0             | -2.5       | -18.1      | -18.0                 | 1.69                    | 1.69                   | -0.34                 |
| 1,506.5             | 7.10            | 254.40      | 1,505.5             | -5.1       | -27.5      | -27.1                 | 1.91                    | 1.91                   | 0.00                  |
| 1,606.5             | 9.80            | 260.70      | 1,604.4             | -8.1       | -41.8      | -41.3                 | 2.85                    | 2.70                   | 6.30                  |
| 1,780.0             | 11.41           | 266.33      | 1,774.9             | -11.6      | -73.5      | -72.8                 | 1.10                    | 0.93                   | 3.24                  |
| 1,874.0             | 11.33           | 265.03      | 1,867.1             | -13.0      | -92.0      | -91.2                 | 0.29                    | -0.09                  | -1.38                 |
| 1,969.0             | 12.92           | 262.47      | 1,960.0             | -15.2      | -111.8     | -110.8                | 1.77                    | 1.67                   | -2.69                 |
| 2,064.0             | 14.24           | 255.29      | 2,052.3             | -19.6      | -133.7     | -132.4                | 2.25                    | 1.39                   | -7.56                 |
| 2,158.0             | 15.70           | 252.73      | 2,143.1             | -26.3      | -157.0     | -155.3                | 1.70                    | 1.55                   | -2.72                 |
| 2,253.0             | 18.38           | 252.18      | 2,233.9             | -34.7      | -183.5     | -181.4                | 2.83                    | 2.82                   | -0.58                 |
| 2,348.0             | 19.62           | 249.98      | 2,323.8             | -44.7      | -212.8     | -210.1                | 1.51                    | 1.31                   | -2.32                 |
| 2,442.0             | 22.15           | 249.62      | 2,411.6             | -56.3      | -244.2     | -240.8                | 2.69                    | 2.69                   | -0.38                 |
| 2,537.0             | 21.87           | 252.55      | 2,499.7             | -67.8      | -277.9     | -273.8                | 1.19                    | -0.29                  | 3.08                  |
| 2,631.0             | 23.05           | 258.90      | 2,586.5             | -76.6      | -312.6     | -308.1                | 2.87                    | 1.26                   | 6.76                  |
| 2,726.0             | 22.36           | 256.79      | 2,674.2             | -84.4      | -348.5     | -343.5                | 1.12                    | -0.73                  | -2.22                 |
| 2,821.0             | 23.22           | 257.87      | 2,761.8             | -92.4      | -384.4     | -378.9                | 1.01                    | 0.91                   | 1.14                  |
| 2,915.0             | 22.29           | 257.29      | 2,848.4             | -100.2     | -419.9     | -413.9                | 1.02                    | -0.99                  | -0.62                 |
| 3,010.0             | 22.30           | 258.53      | 2,936.3             | -107.8     | -455.1     | -448.7                | 0.50                    | 0.01                   | 1.31                  |
| 3,105.0             | 21.78           | 257.81      | 3,024.4             | -115.1     | -490.0     | -483.1                | 0.62                    | -0.55                  | -0.76                 |
| 3,199.0             | 22.19           | 258.77      | 3,111.6             | -122.2     | -524.5     | -517.2                | 0.58                    | 0.44                   | 1.02                  |
| 3,295.0             | 21.53           | 257.30      | 3,200.7             | -129.6     | -559.5     | -551.7                | 0.89                    | -0.69                  | -1.53                 |
| 3,389.0             | 21.38           | 257.36      | 3,288.1             | -137.2     | -593.0     | -584.8                | 0.16                    | -0.16                  | 0.06                  |
| 3,484.0             | 20.29           | 256.68      | 3,376.9             | -144.8     | -625.9     | -617.2                | 1.18                    | -1.15                  | -0.72                 |
| 3,579.0             | 20.67           | 256.30      | 3,465.9             | -152.5     | -658.2     | -649.1                | 0.42                    | 0.40                   | -0.40                 |
| 3,673.0             | 21.81           | 257.27      | 3,553.5             | -160.3     | -691.4     | -681.8                | 1.27                    | 1.21                   | 1.03                  |
| 3,768.0             | 21.28           | 254.57      | 3,641.9             | -168.8     | -725.2     | -715.1                | 1.18                    | -0.56                  | -2.84                 |
| 3,863.0             | 22.63           | 257.19      | 3,730.0             | -177.4     | -759.7     | -749.0                | 1.76                    | 1.42                   | 2.76                  |
| 3,875.4             | 22.60           | 257.55      | 3,741.5             | -178.5     | -764.3     | -753.7                | 1.14                    | -0.21                  | 2.92                  |
| <b>Parkman</b>      |                 |             |                     |            |            |                       |                         |                        |                       |
| 3,957.0             | 22.45           | 259.95      | 3,816.8             | -184.6     | -795.0     | -783.9                | 1.14                    | -0.19                  | 2.94                  |
| 4,052.0             | 22.54           | 258.67      | 3,904.6             | -191.3     | -830.7     | -819.2                | 0.52                    | 0.09                   | -1.35                 |
| 4,146.0             | 21.71           | 257.18      | 3,991.7             | -198.7     | -865.3     | -853.4                | 1.07                    | -0.88                  | -1.59                 |
| 4,241.0             | 21.66           | 257.06      | 4,080.0             | -206.5     | -899.5     | -887.1                | 0.07                    | -0.05                  | -0.13                 |
| 4,336.0             | 22.42           | 257.61      | 4,168.0             | -214.3     | -934.3     | -921.5                | 0.83                    | 0.80                   | 0.58                  |
| 4,430.0             | 21.94           | 257.48      | 4,255.1             | -222.0     | -969.0     | -955.6                | 0.51                    | -0.51                  | -0.14                 |
| 4,466.0             | 21.88           | 257.75      | 4,288.5             | -224.9     | -982.1     | -968.6                | 0.33                    | -0.18                  | 0.75                  |
| <b>Sussex</b>       |                 |             |                     |            |            |                       |                         |                        |                       |
| 4,525.0             | 21.77           | 258.20      | 4,343.2             | -229.4     | -1,003.5   | -989.8                | 0.33                    | -0.18                  | 0.76                  |

|                  |                                   |                                     |   |
|------------------|-----------------------------------|-------------------------------------|---|
| <b>Company:</b>  | PDC Energy Inc. DJ Basin          | <b>Local Co-ordinate Reference:</b> | Well Bost Farm 40C-8-L2                 |
| <b>Project:</b>  | SEC.7-T5N-R66W                    | <b>TVD Reference:</b>               | WELL @ 4902ft (Patterson 272 - RKB 28') |
| <b>Site:</b>     | Bost Farms 5-7 Pad SEC.7-T5N-R66W | <b>MD Reference:</b>                | WELL @ 4902ft (Patterson 272 - RKB 28') |
| <b>Well:</b>     | Bost Farm 40C-8-L2                | <b>North Reference:</b>             | True                                    |
| <b>Wellbore:</b> | Bost Farm 40C-8-L2 Wellbore #1    | <b>Survey Calculation Method:</b>   | Minimum Curvature                       |
| <b>Design:</b>   | 40C-8-L2_Final Surveys            | <b>Database:</b>                    | US_EDM                                  |

### Survey

| Measured Depth (ft)   | Inclination (°) | Azimuth (°) | Vertical Depth (ft) | +N/-S (ft) | +E/-W (ft) | Vertical Section (ft) | Dogleg Rate (°/100usft) | Build Rate (°/100usft) | Turn Rate (°/100usft) |
|-----------------------|-----------------|-------------|---------------------|------------|------------|-----------------------|-------------------------|------------------------|-----------------------|
| 4,620.0               | 22.42           | 258.80      | 4,431.3             | -236.6     | -1,038.5   | -1,024.3              | 0.72                    | 0.68                   | 0.63                  |
| 4,715.0               | 21.02           | 254.99      | 4,519.5             | -244.5     | -1,072.8   | -1,058.1              | 2.09                    | -1.47                  | -4.01                 |
| 4,809.0               | 21.82           | 260.21      | 4,607.0             | -251.8     | -1,106.3   | -1,091.2              | 2.20                    | 0.85                   | 5.55                  |
| 4,904.0               | 20.36           | 257.88      | 4,695.7             | -258.3     | -1,139.8   | -1,124.3              | 1.77                    | -1.54                  | -2.45                 |
| 4,999.0               | 20.93           | 262.50      | 4,784.6             | -264.0     | -1,172.8   | -1,157.0              | 1.82                    | 0.60                   | 4.86                  |
| 5,094.0               | 21.41           | 258.54      | 4,873.2             | -269.6     | -1,206.6   | -1,190.4              | 1.59                    | 0.51                   | -4.17                 |
| 5,157.8               | 21.50           | 259.09      | 4,932.5             | -274.2     | -1,229.5   | -1,213.0              | 0.35                    | 0.15                   | 0.86                  |
| <b>Shannon</b>        |                 |             |                     |            |            |                       |                         |                        |                       |
| 5,188.0               | 21.55           | 259.35      | 4,960.6             | -276.2     | -1,240.4   | -1,223.8              | 0.35                    | 0.15                   | 0.86                  |
| 5,283.0               | 21.61           | 259.93      | 5,049.0             | -282.5     | -1,274.8   | -1,257.8              | 0.23                    | 0.06                   | 0.61                  |
| 5,378.0               | 20.69           | 257.66      | 5,137.6             | -289.2     | -1,308.4   | -1,291.0              | 1.30                    | -0.97                  | -2.39                 |
| 5,472.0               | 21.45           | 254.34      | 5,225.3             | -297.4     | -1,341.2   | -1,323.3              | 1.51                    | 0.81                   | -3.53                 |
| 5,567.0               | 21.51           | 255.07      | 5,313.7             | -306.5     | -1,374.7   | -1,356.3              | 0.29                    | 0.06                   | 0.77                  |
| 5,662.0               | 19.30           | 252.66      | 5,402.7             | -315.7     | -1,406.6   | -1,387.6              | 2.49                    | -2.33                  | -2.54                 |
| 5,757.0               | 21.31           | 254.49      | 5,491.8             | -325.0     | -1,438.2   | -1,418.7              | 2.22                    | 2.12                   | 1.93                  |
| 5,851.0               | 20.95           | 255.10      | 5,579.5             | -333.9     | -1,470.9   | -1,450.8              | 0.45                    | -0.38                  | 0.65                  |
| 5,946.0               | 21.04           | 254.57      | 5,668.2             | -342.8     | -1,503.7   | -1,483.2              | 0.22                    | 0.09                   | -0.56                 |
| 6,041.0               | 19.87           | 252.80      | 5,757.2             | -352.1     | -1,535.6   | -1,514.5              | 1.39                    | -1.23                  | -1.86                 |
| 6,135.0               | 21.37           | 255.29      | 5,845.2             | -361.2     | -1,567.4   | -1,545.8              | 1.85                    | 1.60                   | 2.65                  |
| 6,230.0               | 19.91           | 251.97      | 5,934.1             | -370.6     | -1,599.6   | -1,577.3              | 1.97                    | -1.54                  | -3.49                 |
| 6,325.0               | 20.32           | 253.73      | 6,023.3             | -380.2     | -1,630.8   | -1,608.0              | 0.77                    | 0.43                   | 1.85                  |
| 6,420.0               | 19.47           | 252.90      | 6,112.6             | -389.5     | -1,661.7   | -1,638.4              | 0.94                    | -0.89                  | -0.87                 |
| 6,514.0               | 20.95           | 255.89      | 6,200.8             | -398.2     | -1,693.0   | -1,669.2              | 1.92                    | 1.57                   | 3.18                  |
| 6,609.0               | 18.25           | 250.39      | 6,290.3             | -407.3     | -1,723.5   | -1,699.1              | 3.44                    | -2.84                  | -5.79                 |
| 6,704.0               | 8.02            | 233.51      | 6,382.8             | -416.3     | -1,742.9   | -1,718.0              | 11.39                   | -10.77                 | -17.77                |
| 6,798.0               | 5.49            | 195.47      | 6,476.1             | -424.5     | -1,749.4   | -1,724.1              | 5.32                    | -2.69                  | -40.47                |
| 6,893.0               | 8.81            | 130.51      | 6,570.5             | -433.6     | -1,745.0   | -1,719.2              | 8.59                    | 3.49                   | -68.38                |
| 6,988.0               | 14.46           | 91.95       | 6,663.7             | -438.8     | -1,727.6   | -1,701.6              | 9.81                    | 5.95                   | -40.59                |
| 7,082.0               | 20.86           | 98.72       | 6,753.2             | -441.7     | -1,699.3   | -1,673.1              | 7.14                    | 6.81                   | 7.20                  |
| 7,177.0               | 27.65           | 101.19      | 6,839.8             | -448.6     | -1,660.9   | -1,634.4              | 7.23                    | 7.15                   | 2.60                  |
| 7,237.6               | 31.43           | 98.50       | 6,892.5             | -453.6     | -1,631.5   | -1,604.8              | 6.60                    | 6.23                   | -4.43                 |
| <b>Sharon Springs</b> |                 |             |                     |            |            |                       |                         |                        |                       |
| 7,271.0               | 33.53           | 97.26       | 6,920.6             | -456.1     | -1,613.7   | -1,586.9              | 6.60                    | 6.29                   | -3.72                 |
| 7,280.5               | 34.38           | 97.09       | 6,928.5             | -456.8     | -1,608.5   | -1,581.6              | 8.98                    | 8.93                   | -1.77                 |
| <b>Niobrara A</b>     |                 |             |                     |            |            |                       |                         |                        |                       |
| 7,366.0               | 42.02           | 95.85       | 6,995.7             | -462.7     | -1,556.0   | -1,528.9              | 8.98                    | 8.94                   | -1.45                 |
| 7,429.1               | 47.33           | 94.88       | 7,040.5             | -466.8     | -1,511.8   | -1,484.6              | 8.49                    | 8.42                   | -1.54                 |
| <b>Niobrara B</b>     |                 |             |                     |            |            |                       |                         |                        |                       |
| 7,460.0               | 49.94           | 94.46       | 7,060.9             | -468.7     | -1,488.7   | -1,461.4              | 8.49                    | 8.43                   | -1.35                 |
| 7,534.9               | 55.09           | 93.23       | 7,106.5             | -472.6     | -1,429.4   | -1,402.0              | 6.99                    | 6.87                   | -1.64                 |
| <b>Niobrara C</b>     |                 |             |                     |            |            |                       |                         |                        |                       |
| 7,555.0               | 56.47           | 92.93       | 7,117.8             | -473.5     | -1,412.8   | -1,385.4              | 6.99                    | 6.88                   | -1.51                 |
| 7,650.0               | 65.08           | 93.04       | 7,164.2             | -477.9     | -1,330.1   | -1,302.5              | 9.06                    | 9.06                   | 0.12                  |
| 7,727.7               | 72.09           | 92.31       | 7,192.5             | -481.2     | -1,257.9   | -1,230.3              | 9.06                    | 9.02                   | -0.94                 |
| <b>Fort Hays</b>      |                 |             |                     |            |            |                       |                         |                        |                       |

|                  |                                   |                                     |   |
|------------------|-----------------------------------|-------------------------------------|---|
| <b>Company:</b>  | PDC Energy Inc. DJ Basin          | <b>Local Co-ordinate Reference:</b> | Well Bost Farm 40C-8-L2                 |
| <b>Project:</b>  | SEC.7-T5N-R66W                    | <b>TVD Reference:</b>               | WELL @ 4902ft (Patterson 272 - RKB 28') |
| <b>Site:</b>     | Bost Farms 5-7 Pad SEC.7-T5N-R66W | <b>MD Reference:</b>                | WELL @ 4902ft (Patterson 272 - RKB 28') |
| <b>Well:</b>     | Bost Farm 40C-8-L2                | <b>North Reference:</b>             | True                                    |
| <b>Wellbore:</b> | Bost Farm 40C-8-L2 Wellbore #1    | <b>Survey Calculation Method:</b>   | Minimum Curvature                       |
| <b>Design:</b>   | 40C-8-L2_Final Surveys            | <b>Database:</b>                    | US_EDM                                  |

### Survey

| Measured Depth (ft)               | Inclination (°) | Azimuth (°) | Vertical Depth (ft) | +N/-S (ft) | +E/-W (ft) | Vertical Section (ft) | Dogleg Rate (°/100usft) | Build Rate (°/100usft) | Turn Rate (°/100usft) |
|-----------------------------------|-----------------|-------------|---------------------|------------|------------|-----------------------|-------------------------|------------------------|-----------------------|
| 7,745.0                           | 73.65           | 92.16       | 7,197.6             | -481.9     | -1,241.4   | -1,213.7              | 9.06                    | 9.02                   | -0.89                 |
| 7,839.0                           | 82.55           | 91.08       | 7,217.0             | -484.4     | -1,149.5   | -1,121.9              | 9.53                    | 9.47                   | -1.15                 |
| 7,868.3                           | 83.60           | 89.85       | 7,220.5             | -484.7     | -1,120.4   | -1,092.8              | 5.51                    | 3.59                   | -4.21                 |
| <b>Codell</b>                     |                 |             |                     |            |            |                       |                         |                        |                       |
| 7,885.3                           | 84.21           | 89.13       | 7,222.3             | -484.5     | -1,103.5   | -1,075.9              | 5.51                    | 3.60                   | -4.19                 |
| <b>LP (2353.2' FSL, 150' FWL)</b> |                 |             |                     |            |            |                       |                         |                        |                       |
| 7,934.0                           | 85.97           | 87.10       | 7,226.5             | -482.9     | -1,055.1   | -1,027.6              | 5.51                    | 3.61                   | -4.18                 |
| 8,029.0                           | 82.65           | 94.83       | 7,235.9             | -484.5     | -960.6     | -933.2                | 8.82                    | -3.49                  | 8.14                  |
| 8,123.0                           | 82.94           | 95.29       | 7,247.7             | -492.7     | -867.7     | -840.0                | 0.58                    | 0.31                   | 0.49                  |
| 8,218.0                           | 85.05           | 94.06       | 7,257.6             | -500.4     | -773.6     | -745.6                | 2.57                    | 2.22                   | -1.29                 |
| 8,313.0                           | 86.42           | 92.61       | 7,264.7             | -505.9     | -679.0     | -650.8                | 2.10                    | 1.44                   | -1.53                 |
| 8,407.0                           | 85.95           | 90.30       | 7,270.9             | -508.3     | -585.2     | -557.1                | 2.50                    | -0.50                  | -2.46                 |
| 8,502.0                           | 85.79           | 90.47       | 7,277.8             | -509.0     | -490.5     | -462.5                | 0.25                    | -0.17                  | 0.18                  |
| 8,597.0                           | 86.06           | 90.59       | 7,284.5             | -509.8     | -395.7     | -367.8                | 0.31                    | 0.28                   | 0.13                  |
| 8,691.0                           | 85.64           | 90.56       | 7,291.3             | -510.8     | -302.0     | -274.1                | 0.45                    | -0.45                  | -0.03                 |
| 8,786.0                           | 84.99           | 89.54       | 7,299.1             | -510.9     | -207.3     | -179.6                | 1.27                    | -0.68                  | -1.07                 |
| 8,881.0                           | 84.72           | 88.94       | 7,307.6             | -509.6     | -112.7     | -85.2                 | 0.69                    | -0.28                  | -0.63                 |
| 8,975.0                           | 84.56           | 89.37       | 7,316.4             | -508.2     | -19.1      | 8.2                   | 0.49                    | -0.17                  | 0.46                  |
| 9,070.0                           | 84.28           | 89.46       | 7,325.6             | -507.3     | 75.4       | 102.6                 | 0.31                    | -0.29                  | 0.09                  |
| 9,165.0                           | 84.42           | 89.45       | 7,335.0             | -506.4     | 170.0      | 196.9                 | 0.15                    | 0.15                   | -0.01                 |
| 9,259.0                           | 84.94           | 89.53       | 7,343.7             | -505.5     | 263.6      | 290.3                 | 0.56                    | 0.55                   | 0.09                  |
| 9,354.0                           | 84.15           | 90.20       | 7,352.7             | -505.3     | 358.1      | 384.7                 | 1.09                    | -0.83                  | 0.71                  |
| 9,449.0                           | 86.46           | 89.44       | 7,360.5             | -505.0     | 452.8      | 479.3                 | 2.56                    | 2.43                   | -0.80                 |
| 9,543.0                           | 87.11           | 88.97       | 7,365.8             | -503.7     | 546.6      | 572.9                 | 0.85                    | 0.69                   | -0.50                 |
| 9,638.0                           | 86.87           | 89.27       | 7,370.8             | -502.2     | 641.5      | 667.5                 | 0.40                    | -0.25                  | 0.32                  |
| 9,732.0                           | 86.72           | 89.49       | 7,376.0             | -501.2     | 735.3      | 761.2                 | 0.28                    | -0.16                  | 0.23                  |
| 9,827.0                           | 87.73           | 89.22       | 7,380.6             | -500.2     | 830.2      | 855.9                 | 1.10                    | 1.06                   | -0.28                 |
| 9,921.0                           | 89.87           | 89.12       | 7,382.6             | -498.8     | 924.2      | 949.6                 | 2.28                    | 2.28                   | -0.11                 |
| 10,015.0                          | 89.92           | 89.19       | 7,382.8             | -497.4     | 1,018.2    | 1,043.4               | 0.09                    | 0.05                   | 0.07                  |
| 10,109.0                          | 89.52           | 89.22       | 7,383.2             | -496.1     | 1,112.2    | 1,137.2               | 0.43                    | -0.43                  | 0.03                  |
| 10,203.0                          | 88.95           | 89.32       | 7,384.5             | -494.9     | 1,206.2    | 1,231.0               | 0.62                    | -0.61                  | 0.11                  |
| 10,297.0                          | 89.74           | 89.57       | 7,385.6             | -494.0     | 1,300.1    | 1,324.8               | 0.88                    | 0.84                   | 0.27                  |
| 10,391.0                          | 89.81           | 89.80       | 7,385.9             | -493.5     | 1,394.1    | 1,418.6               | 0.26                    | 0.07                   | 0.24                  |
| 10,485.0                          | 89.62           | 90.14       | 7,386.4             | -493.4     | 1,488.1    | 1,512.5               | 0.41                    | -0.20                  | 0.36                  |
| 10,580.0                          | 90.49           | 89.89       | 7,386.3             | -493.5     | 1,583.1    | 1,607.3               | 0.95                    | 0.92                   | -0.26                 |
| 10,674.0                          | 89.85           | 90.16       | 7,386.0             | -493.5     | 1,677.1    | 1,701.2               | 0.74                    | -0.68                  | 0.29                  |
| 10,768.0                          | 90.81           | 90.13       | 7,385.5             | -493.7     | 1,771.1    | 1,795.1               | 1.02                    | 1.02                   | -0.03                 |
| 10,863.0                          | 90.33           | 89.71       | 7,384.5             | -493.6     | 1,866.1    | 1,889.9               | 0.67                    | -0.51                  | -0.44                 |
| 10,957.0                          | 89.76           | 89.32       | 7,384.5             | -492.8     | 1,960.1    | 1,983.8               | 0.73                    | -0.61                  | -0.41                 |
| 11,052.0                          | 89.32           | 89.90       | 7,385.2             | -492.2     | 2,055.1    | 2,078.6               | 0.77                    | -0.46                  | 0.61                  |
| 11,147.0                          | 89.38           | 90.23       | 7,386.3             | -492.3     | 2,150.1    | 2,173.4               | 0.35                    | 0.06                   | 0.35                  |
| 11,241.0                          | 88.94           | 90.24       | 7,387.7             | -492.7     | 2,244.1    | 2,267.3               | 0.47                    | -0.47                  | 0.01                  |
| 11,335.0                          | 88.54           | 90.28       | 7,389.8             | -493.1     | 2,338.1    | 2,361.2               | 0.43                    | -0.43                  | 0.04                  |

|                  |                                   |                                     |   |
|------------------|-----------------------------------|-------------------------------------|---|
| <b>Company:</b>  | PDC Energy Inc. DJ Basin          | <b>Local Co-ordinate Reference:</b> | Well Bost Farm 40C-8-L2                 |
| <b>Project:</b>  | SEC.7-T5N-R66W                    | <b>TVD Reference:</b>               | WELL @ 4902ft (Patterson 272 - RKB 28') |
| <b>Site:</b>     | Bost Farms 5-7 Pad SEC.7-T5N-R66W | <b>MD Reference:</b>                | WELL @ 4902ft (Patterson 272 - RKB 28') |
| <b>Well:</b>     | Bost Farm 40C-8-L2                | <b>North Reference:</b>             | True                                    |
| <b>Wellbore:</b> | Bost Farm 40C-8-L2 Wellbore #1    | <b>Survey Calculation Method:</b>   | Minimum Curvature                       |
| <b>Design:</b>   | 40C-8-L2_Final Surveys            | <b>Database:</b>                    | US_EDM                                  |

### Survey

| Measured Depth (ft) | Inclination (°) | Azimuth (°) | Vertical Depth (ft) | +N/-S (ft) | +E/-W (ft) | Vertical Section (ft) | Dogleg Rate (°/100usft) | Build Rate (°/100usft) | Turn Rate (°/100usft) |
|---------------------|-----------------|-------------|---------------------|------------|------------|-----------------------|-------------------------|------------------------|-----------------------|
| 11,430.0            | 88.46           | 90.26       | 7,392.2             | -493.5     | 2,433.0    | 2,456.0               | 0.09                    | -0.08                  | -0.02                 |
| 11,524.0            | 90.16           | 90.42       | 7,393.4             | -494.1     | 2,527.0    | 2,549.9               | 1.82                    | 1.81                   | 0.17                  |
| 11,618.0            | 89.91           | 90.67       | 7,393.3             | -495.0     | 2,621.0    | 2,643.8               | 0.38                    | -0.27                  | 0.27                  |
| 11,713.0            | 89.99           | 90.31       | 7,393.4             | -495.8     | 2,716.0    | 2,738.7               | 0.39                    | 0.08                   | -0.38                 |
| 11,807.0            | 89.69           | 90.59       | 7,393.7             | -496.5     | 2,810.0    | 2,832.6               | 0.44                    | -0.32                  | 0.30                  |
| 11,901.0            | 89.76           | 91.24       | 7,394.1             | -498.0     | 2,904.0    | 2,926.6               | 0.70                    | 0.07                   | 0.69                  |
| 11,995.0            | 89.90           | 90.49       | 7,394.4             | -499.5     | 2,998.0    | 3,020.5               | 0.81                    | 0.15                   | -0.80                 |
| 12,089.0            | 90.64           | 90.52       | 7,393.9             | -500.3     | 3,092.0    | 3,114.4               | 0.79                    | 0.79                   | 0.03                  |
| 12,183.0            | 90.63           | 91.21       | 7,392.9             | -501.7     | 3,186.0    | 3,208.3               | 0.73                    | -0.01                  | 0.73                  |
| 12,278.0            | 90.62           | 90.72       | 7,391.9             | -503.3     | 3,280.9    | 3,303.2               | 0.52                    | -0.01                  | -0.52                 |
| 12,371.0            | 90.21           | 90.42       | 7,391.2             | -504.2     | 3,373.9    | 3,396.2               | 0.55                    | -0.44                  | -0.32                 |
| 12,464.0            | 89.80           | 91.14       | 7,391.2             | -505.5     | 3,466.9    | 3,489.1               | 0.89                    | -0.44                  | 0.77                  |
| 12,558.0            | 90.04           | 89.96       | 7,391.3             | -506.4     | 3,560.9    | 3,583.0               | 1.28                    | 0.26                   | -1.26                 |
| 12,653.0            | 90.07           | 89.37       | 7,391.2             | -505.8     | 3,655.9    | 3,677.8               | 0.62                    | 0.03                   | -0.62                 |
| 12,747.0            | 89.74           | 89.42       | 7,391.4             | -504.9     | 3,749.9    | 3,771.6               | 0.36                    | -0.35                  | 0.05                  |
| 12,841.0            | 89.68           | 88.96       | 7,391.9             | -503.5     | 3,843.9    | 3,865.4               | 0.49                    | -0.06                  | -0.49                 |
| 12,936.0            | 89.94           | 88.56       | 7,392.2             | -501.5     | 3,938.9    | 3,960.1               | 0.50                    | 0.27                   | -0.42                 |
| 13,030.0            | 90.11           | 88.58       | 7,392.1             | -499.1     | 4,032.9    | 4,053.8               | 0.18                    | 0.18                   | 0.02                  |
| 13,124.0            | 90.07           | 88.55       | 7,392.0             | -496.8     | 4,126.8    | 4,147.5               | 0.05                    | -0.04                  | -0.03                 |
| 13,218.0            | 90.06           | 89.77       | 7,391.9             | -495.4     | 4,220.8    | 4,241.3               | 1.30                    | -0.01                  | 1.30                  |
| 13,312.0            | 90.24           | 89.39       | 7,391.6             | -494.7     | 4,314.8    | 4,335.2               | 0.45                    | 0.19                   | -0.40                 |
| 13,407.0            | 90.27           | 89.30       | 7,391.2             | -493.6     | 4,409.8    | 4,429.9               | 0.10                    | 0.03                   | -0.09                 |
| 13,501.0            | 90.61           | 89.20       | 7,390.5             | -492.4     | 4,503.8    | 4,523.7               | 0.38                    | 0.36                   | -0.11                 |
| 13,596.0            | 91.06           | 89.00       | 7,389.1             | -490.9     | 4,598.8    | 4,618.5               | 0.52                    | 0.47                   | -0.21                 |
| 13,690.0            | 91.08           | 89.04       | 7,387.3             | -489.3     | 4,692.7    | 4,712.2               | 0.05                    | 0.02                   | 0.04                  |
| 13,784.0            | 90.91           | 89.26       | 7,385.7             | -487.9     | 4,786.7    | 4,806.0               | 0.30                    | -0.18                  | 0.23                  |
| 13,879.0            | 89.94           | 89.36       | 7,385.0             | -486.7     | 4,881.7    | 4,900.8               | 1.03                    | -1.02                  | 0.11                  |
| 13,973.0            | 89.45           | 89.24       | 7,385.5             | -485.6     | 4,975.7    | 4,994.6               | 0.54                    | -0.52                  | -0.13                 |
| 14,067.0            | 89.77           | 89.26       | 7,386.1             | -484.4     | 5,069.7    | 5,088.4               | 0.34                    | 0.34                   | 0.02                  |
| 14,162.0            | 89.93           | 89.59       | 7,386.4             | -483.4     | 5,164.7    | 5,183.2               | 0.39                    | 0.17                   | 0.35                  |
| 14,257.0            | 90.04           | 89.52       | 7,386.4             | -482.7     | 5,259.7    | 5,278.0               | 0.14                    | 0.12                   | -0.07                 |
| 14,351.0            | 89.97           | 89.26       | 7,386.4             | -481.7     | 5,353.7    | 5,371.8               | 0.29                    | -0.07                  | -0.28                 |
| 14,445.0            | 89.96           | 89.37       | 7,386.5             | -480.6     | 5,447.7    | 5,465.6               | 0.12                    | -0.01                  | 0.12                  |
| 14,540.0            | 90.12           | 88.93       | 7,386.4             | -479.1     | 5,542.7    | 5,560.4               | 0.49                    | 0.17                   | -0.46                 |
| 14,634.0            | 89.97           | 89.60       | 7,386.3             | -477.9     | 5,636.6    | 5,654.2               | 0.73                    | -0.16                  | 0.71                  |
| 14,728.0            | 89.96           | 89.80       | 7,386.4             | -477.4     | 5,730.6    | 5,748.0               | 0.21                    | -0.01                  | 0.21                  |
| 14,822.0            | 89.70           | 90.14       | 7,386.7             | -477.4     | 5,824.6    | 5,841.9               | 0.46                    | -0.28                  | 0.36                  |
| 14,916.0            | 90.07           | 89.33       | 7,386.9             | -477.0     | 5,918.6    | 5,935.7               | 0.95                    | 0.39                   | -0.86                 |
| 15,010.0            | 90.17           | 89.64       | 7,386.7             | -476.1     | 6,012.6    | 6,029.5               | 0.35                    | 0.11                   | 0.33                  |
| 15,104.0            | 90.43           | 89.50       | 7,386.2             | -475.4     | 6,106.6    | 6,123.4               | 0.31                    | 0.28                   | -0.15                 |
| 15,199.0            | 90.54           | 89.65       | 7,385.4             | -474.7     | 6,201.6    | 6,218.2               | 0.20                    | 0.12                   | 0.16                  |
| 15,293.0            | 90.62           | 89.09       | 7,384.4             | -473.7     | 6,295.6    | 6,312.0               | 0.60                    | 0.09                   | -0.60                 |
| 15,387.0            | 90.64           | 89.28       | 7,383.4             | -472.3     | 6,389.6    | 6,405.7               | 0.20                    | 0.02                   | 0.20                  |
| 15,481.0            | 90.61           | 89.50       | 7,382.4             | -471.3     | 6,483.6    | 6,499.5               | 0.24                    | -0.03                  | 0.23                  |

|                  |                                   |                                     |   |
|------------------|-----------------------------------|-------------------------------------|---|
| <b>Company:</b>  | PDC Energy Inc. DJ Basin          | <b>Local Co-ordinate Reference:</b> | Well Bost Farm 40C-8-L2                 |
| <b>Project:</b>  | SEC.7-T5N-R66W                    | <b>TVD Reference:</b>               | WELL @ 4902ft (Patterson 272 - RKB 28') |
| <b>Site:</b>     | Bost Farms 5-7 Pad SEC.7-T5N-R66W | <b>MD Reference:</b>                | WELL @ 4902ft (Patterson 272 - RKB 28') |
| <b>Well:</b>     | Bost Farm 40C-8-L2                | <b>North Reference:</b>             | True                                    |
| <b>Wellbore:</b> | Bost Farm 40C-8-L2 Wellbore #1    | <b>Survey Calculation Method:</b>   | Minimum Curvature                       |
| <b>Design:</b>   | 40C-8-L2_Final Surveys            | <b>Database:</b>                    | US_EDM                                  |

**Survey**

| Measured Depth (ft)                | Inclination (°) | Azimuth (°) | Vertical Depth (ft) | +N/-S (ft) | +E/-W (ft) | Vertical Section (ft) | Dogleg Rate (°/100usft) | Build Rate (°/100usft) | Turn Rate (°/100usft) |
|------------------------------------|-----------------|-------------|---------------------|------------|------------|-----------------------|-------------------------|------------------------|-----------------------|
| 15,575.0                           | 90.50           | 89.77       | 7,381.4             | -470.7     | 6,577.6    | 6,593.4               | 0.31                    | -0.12                  | 0.29                  |
| 15,669.0                           | 90.51           | 90.28       | 7,380.6             | -470.8     | 6,671.6    | 6,687.2               | 0.54                    | 0.01                   | 0.54                  |
| 15,763.0                           | 90.24           | 90.55       | 7,380.0             | -471.5     | 6,765.6    | 6,781.1               | 0.41                    | -0.29                  | 0.29                  |
| 15,857.0                           | 90.40           | 90.34       | 7,379.5             | -472.2     | 6,859.6    | 6,875.0               | 0.28                    | 0.17                   | -0.22                 |
| 15,951.0                           | 90.42           | 90.33       | 7,378.8             | -472.7     | 6,953.6    | 6,968.9               | 0.02                    | 0.02                   | -0.01                 |
| 16,045.0                           | 90.51           | 90.17       | 7,378.0             | -473.1     | 7,047.6    | 7,062.8               | 0.20                    | 0.10                   | -0.17                 |
| 16,140.0                           | 90.22           | 90.11       | 7,377.4             | -473.4     | 7,142.6    | 7,157.7               | 0.31                    | -0.31                  | -0.06                 |
| 16,233.0                           | 90.24           | 90.04       | 7,377.1             | -473.5     | 7,235.6    | 7,250.5               | 0.08                    | 0.02                   | -0.08                 |
| 16,327.0                           | 90.16           | 90.29       | 7,376.7             | -473.8     | 7,329.6    | 7,344.4               | 0.28                    | -0.09                  | 0.27                  |
| 16,422.0                           | 90.19           | 90.31       | 7,376.4             | -474.3     | 7,424.6    | 7,439.3               | 0.04                    | 0.03                   | 0.02                  |
| 16,516.0                           | 90.26           | 89.95       | 7,376.1             | -474.5     | 7,518.6    | 7,533.2               | 0.39                    | 0.07                   | -0.38                 |
| 16,610.0                           | 90.01           | 90.45       | 7,375.9             | -474.8     | 7,612.6    | 7,627.1               | 0.59                    | -0.27                  | 0.53                  |
| 16,704.0                           | 90.28           | 90.15       | 7,375.6             | -475.3     | 7,706.6    | 7,721.0               | 0.43                    | 0.29                   | -0.32                 |
| 16,798.0                           | 90.22           | 90.00       | 7,375.2             | -475.4     | 7,800.6    | 7,814.8               | 0.17                    | -0.06                  | -0.16                 |
| 16,892.0                           | 90.28           | 90.17       | 7,374.8             | -475.6     | 7,894.6    | 7,908.7               | 0.19                    | 0.06                   | 0.18                  |
| 16,986.0                           | 90.11           | 89.97       | 7,374.5             | -475.7     | 7,988.6    | 8,002.6               | 0.28                    | -0.18                  | -0.21                 |
| 17,080.0                           | 90.14           | 90.27       | 7,374.3             | -475.9     | 8,082.6    | 8,096.4               | 0.32                    | 0.03                   | 0.32                  |
| 17,174.0                           | 90.17           | 90.09       | 7,374.0             | -476.2     | 8,176.5    | 8,190.3               | 0.19                    | 0.03                   | -0.19                 |
| 17,269.0                           | 90.28           | 90.01       | 7,373.6             | -476.3     | 8,271.5    | 8,285.2               | 0.14                    | 0.12                   | -0.08                 |
| 17,363.0                           | 90.28           | 90.02       | 7,373.2             | -476.3     | 8,365.5    | 8,379.1               | 0.01                    | 0.00                   | 0.01                  |
| 17,457.0                           | 90.11           | 89.83       | 7,372.9             | -476.2     | 8,459.5    | 8,472.9               | 0.27                    | -0.18                  | -0.20                 |
| 17,551.0                           | 90.26           | 89.97       | 7,372.6             | -476.0     | 8,553.5    | 8,566.8               | 0.22                    | 0.16                   | 0.15                  |
| 17,645.0                           | 90.21           | 90.06       | 7,372.2             | -476.0     | 8,647.5    | 8,660.6               | 0.11                    | -0.05                  | 0.10                  |
| 17,740.0                           | 90.16           | 90.17       | 7,371.9             | -476.2     | 8,742.5    | 8,755.5               | 0.13                    | -0.05                  | 0.12                  |
| 17,822.0                           | 90.32           | 89.91       | 7,371.5             | -476.3     | 8,824.5    | 8,837.4               | 0.37                    | 0.20                   | -0.32                 |
| 17,853.0                           | 90.32           | 89.91       | 7,371.3             | -476.2     | 8,855.5    | 8,868.3               | 0.00                    | 0.00                   | 0.00                  |
| <b>BHL (2351' FSL, 465.4' FEL)</b> |                 |             |                     |            |            |                       |                         |                        |                       |

**Formations**

| Measured Depth (ft) | Vertical Depth (ft) | Name              | Lithology | Dip (°) | Dip Direction (°) |
|---------------------|---------------------|-------------------|-----------|---------|-------------------|
| 787.5               | 787.5               | Fox Hills Aq Base |           |         |                   |
| 3,875.4             | 3,741.5             | Parkman           |           |         |                   |
| 4,466.0             | 4,288.5             | Sussex            |           |         |                   |
| 5,157.8             | 4,932.5             | Shannon           |           |         |                   |
| 7,237.6             | 6,892.5             | Sharon Springs    |           |         |                   |
| 7,280.5             | 6,928.5             | Niobrara A        |           |         |                   |
| 7,429.1             | 7,040.5             | Niobrara B        |           |         |                   |
| 7,534.9             | 7,106.5             | Niobrara C        |           |         |                   |
| 7,727.7             | 7,192.5             | Fort Hays         |           |         |                   |
| 7,868.3             | 7,220.5             | Codell            |           |         |                   |

|                  |                                   |                                     |   |
|------------------|-----------------------------------|-------------------------------------|---|
| <b>Company:</b>  | PDC Energy Inc. DJ Basin          | <b>Local Co-ordinate Reference:</b> | Well Bost Farm 40C-8-L2                 |
| <b>Project:</b>  | SEC.7-T5N-R66W                    | <b>TVD Reference:</b>               | WELL @ 4902ft (Patterson 272 - RKB 28') |
| <b>Site:</b>     | Bost Farms 5-7 Pad SEC.7-T5N-R66W | <b>MD Reference:</b>                | WELL @ 4902ft (Patterson 272 - RKB 28') |
| <b>Well:</b>     | Bost Farm 40C-8-L2                | <b>North Reference:</b>             | True                                    |
| <b>Wellbore:</b> | Bost Farm 40C-8-L2 Wellbore #1    | <b>Survey Calculation Method:</b>   | Minimum Curvature                       |
| <b>Design:</b>   | 40C-8-L2_Final Surveys            | <b>Database:</b>                    | US_EDM                                  |

**Design Annotations**

| Measured Depth (ft) | Vertical Depth (ft) | Local Coordinates |            | Comment                     |
|---------------------|---------------------|-------------------|------------|-----------------------------|
|                     |                     | +N/-S (ft)        | +E/-W (ft) |                             |
| 7,885.3             | 7,222.3             | -484.5            | -1,103.5   | LP (2353.2' FSL, 150' FWL)  |
| 17,853.0            | 7,371.3             | -476.2            | 8,855.5    | BHL (2351' FSL, 465.4' FEL) |