

Cement Post Job Report

Client: PDC Energy

Well Name: Bost Farm 38C-8-L

API #: 05-123-51457-00

Job Date: April 4th, 2022

Job Type: New Well - 5.5" Production String

Cement Company & Contact: EXERO Well Integrity -
Cheve Meyer 720-239-3819



ROCK SOLID
WELL INTEGRITY
SOLUTIONS

Treatment Report

Client PDC		Well Name & No. Bost Farm 38C-8-L		Rig Name & No. Patterson 272		Date 4/4/2022	
Job Type Production		Wellhead Connection 5 1/2" HP Cement Head		Casing/Tubing Thread Type Buttress		BHST Deg 275	BHCT Deg 200
Well MD (ft) 18395	Well TVD (ft) 7357	Deg Dev. 90	No. of Stages 1	Tapered String No	Max. PSI. 7000	Max. Ann. PSI. 2500	
Packer/Retainer/DV Tool Depth 2950		Top of Perfs NA		Bottom of Perfs NA		Number of Holes NA	

Pipe/String Details

String	Type of Casing, Tub, DP	OD"	Wt-lb/Ft	ID"	OH Size"	% Excess Lead	% Excess Tail	Depth (ft)
Surface	Casing	9.625	36					1699
Production	Casing	5.5	20	4.778	8.5	0	0	18382

Pre-Job Mud and Well Conditions

Mud Type	OBM	Pipe Rotation		Circulation Data			
Mud wt. ppg	10.8	Rotate Y,N	Yes	Time Circulated (hrs)		3	
Flow Temp	99	Rate	18	Circulation Rate (bpm)		10	
Vis. Sec/qt	57	Torque Val.	20	Full Circulation (Y,N, Partial)		Yes	
PV (cP)		Rotate Time	4	Gas Present (Y,N)		Units	
Yield Pt		Pipe Reciprocation		Centralizers/Plugs			
10 sec gel		Recip Y,N		Quantity & Type			
10 min gel		Stroke (ft)		Top Plug/Type		PDC Provided	
30 min gel		Recip time		Bottom Plug/Type/Burst psi		PDC Provided	

Prejob Calculated Materials, Volumes, & Rates

Preflush & Spacers		Stage 1 Lead: Class G		Stage 1 Tail: Class G		Stage 2 Lead: NA		Stage 2 Tail: NA		Displacement	
Spacer 1	Spacer	Density	12.9	Density	13.7	Density		Density		Fluid Type	Water
Density	12	Sacks	1276	Sacks	1622	Sacks		Sacks		Density	8.33
Volume	140	Vol/bbls	256.8	Vol/bbls	395.8	Vol/bbls	0.0	Vol/bbls	0.0	Volume (bbls)	407
Rate	10	Rate	11	Rate	11	Rate		Rate		Rate (bpm)	10
Spacer 2		Yield	1.13	Yield	1.37	Yield		Yield		Clay Stabilizer?	No
Density		Gal/Sk	3.9	Gal/Sk	6.63	Gal/Sk		Gal/Sk		Biocide/Inhibitor?	Yes
Volume		% Excess	0	% Excess	0	% Excess		% Excess		Slow Rate @ bbl	387
Rate		Lead Top	2400	Tail Top	8674	Lead Top		Tail Top		Bump (psi)	2700
H2O Req.	140	H2O Req.	118	H2O Req.	256	H2O Req.	0	H2O Req.	0	H2O Req.	407

Post Job Details, Final Volumes & Pressures

Job Water Requirements (job+ washup+20% safety factor)				1106				bbls			
Actual Displacement (bbls)		407				Spacer to Surface		Yes			
Bump Plug?		Yes				Spacer Volume To Pit (bbls)		60			
Final Bump Pressure		3400				Cement To Surface (Y,N)		No			
Full Returns Thru Job		Yes				Cement Volume To Surface					
Vol/Time When Circ. Loss						Surface Top Out?					
Vol/Time when Loss Stops						Top Out Volume (bbls)					

Additional Post Job Notes

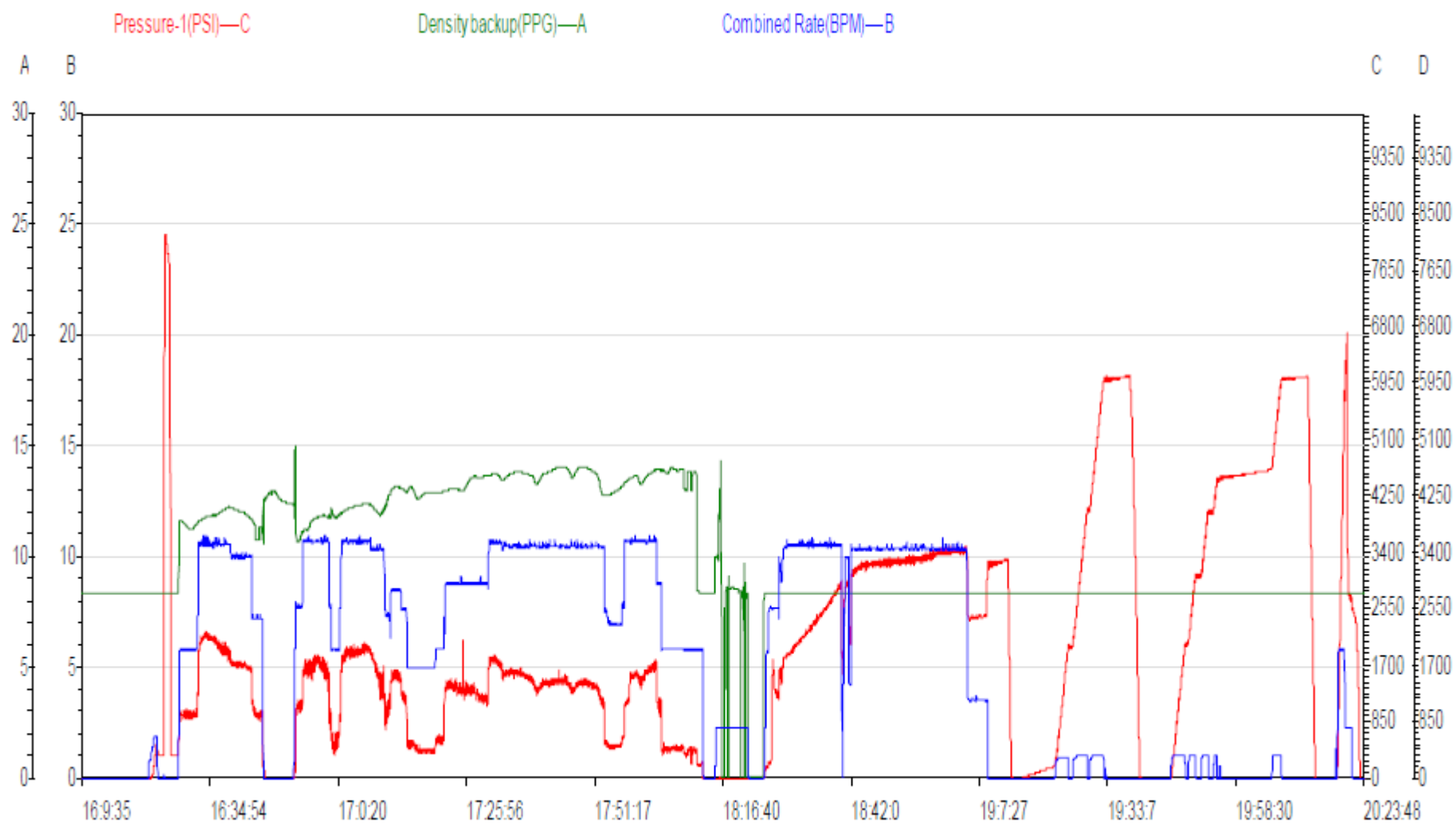


ROCK SOLID
WELL INTEGRITY
SOLUTIONS

Job Treatment Log

Client	Well Name & Number		Rig Name		Date	Ambient Conditions (Temperature / Humidity / Air Pressure)	
PDC	Bost Farm 38C-8-L		Patterson 272		4/4/2022	62 deg F / 19 % / 24.59 in	
Date (MM/DD/YY)	Time (HH:MM)	Density (ppg)	Rate (bpm)	Volume (bbl)	Cumulative Volume (bbl)	Pressure	Treatment Details
4/4/2022	3:30						CALL OUT FOR REQUESTED ON LOCATION TIME OF 0330 ARIVED ON LOCATIO AT 0330. Met with customer to get well information and discuss the job.
	12:00						SPOT EQUIPMENT
	12:10						RIG UP
	13:45						WAIT ON RIG TO FINISH CIRCULATING
	15:45						SAFETY MEETING
	16:00						RIG UP FLOOR Drop Bottom Plug
	16:13	8.30	2.00	3.0		500.0	FILL LINES
	16:16	8.30			3.0	8300.0	PRESSURE TEST LINES TO 8000 PSI.
	16:19	12.00	8.75	140.0	3.0	2000.0	PUMP SPACER WITH SURFACTANT AND FIBER.
	16:35	8.30			143.0	0.0	Shut down Open Wash Up Line
	16:38	8.30			143.0	0.0	DROP SECOND BOTTOM PLUG.
	16:42	12.90	7.10	256.0	143.0	1600.0	MIX AND PUMP 1276 SKS LEAD @ 12.9# , 1.13 CUFT/SK AND 3.90 GALS / SK , TOP OF LEAD @ 2547' .
	17:18	13.70	9.00	395.8	399.0	1650.0	MIX AND PUMP 1622 SKS TAIL @ 13.7# , 1.37 CUFT/SK AND 6.63 GALS/SK , TOP OF TAIL @ 8821' .
	18:02	8.30	6.00	8.0	794.8	500.0	PUMP 8 BBLs OF SUGAR WATER
	18:03	8.30			802.8	0.0	SHUT DOWN
	18:05	8.30			802.8	0.0	WASH PUMPS AND LINES
	18:10	8.30			802.8	0.0	DROP TOP PLUG/ RIG UP TO CASING
	18:15	8.30	7.50	20.0	802.8	230.0	START FRESH WATER DISPLACEMENT
	18:19	8.30	10.50	30.0	822.8	1945.0	WATER DISPLACEMENT
	18:22	8.30	10.50	50.0	852.8	2100.0	WATER DISPLACEMENT
	18:26	8.30	10.50	50.0	902.8	3600.0	WATER DISPLACEMENT
	18:32	8.30	10.50	50.0	952.8	3100.0	WATER DISPLACEMENT
	18:37	8.30	10.50	50.0	1002.8	3200.0	WATER DISPLACEMENT
	18:42	8.30	10.50	50.0	1052.8	3400.0	WATER DISPLACEMENT
	18:47	8.30	10.50	50.0	1102.8	3400.0	WATER DISPLACEMENT
	18:52	8.30	10.50	35.0	1152.8	3600.0	WATER DISPLACEMENT
	18:55	8.30	4.00	20.0	1187.8	2550.0	WATER DISPLACEMENT
	18:59	8.30	4.00		1207.8	2700.0	LAND PLUG , BUMP PLUG TO 3700 PSI.
	19:03	8.30			1207.8	3400.0	CHECK FLOATS , floats held 4.5 bbls back.
	19:13	8.30			1207.8		SET PACKER PER Tool HAND.
	20:09	8.30	2.00	2.0	1207.8	2800.0	SHIFT SLEEVE AND PUMP WET SHOE. SLEEVE opened @ 6530 PSI.
	20:12	8.30			1209.8		checked floats 6 bbls back
	20:15				1209.8		released commenced rig down
	21:00						depart from location
							60 BBLs SPACER TO SURFACE

Bost Farm 38C-8-L Pump Chart – Pressure / Rate / Density





Centralizer Depths

Well Name: Bost Farm 38C-8-L

Production, Set Depth: 18,382.0ftKB

API 05123514570000		Surface Legal Location SWNW 7 5N 66W		Field Name Wattenberg		State CO		Well Configuration Type Horizontal					
Ground Elevation (ft) 4,874.00		Original KB Elevation (ft) 4,902.00		KB-Ground Distance (ft) 28.00		Spud Date 3/30/2022 11:30		Rig Release Date 4/4/2022 23:30		On Production Date		Abandon Date	

Casing Run Tally

Run #	Ref #	Item Des	OD (in)	Wt (lb/ft)	Grade	Run?	Len (ft)	Centralized?	Ext Jw/ry	Connections	Top (ftKB)	Cum Len (ft)
7	1	Casing Joints	5 1/2	20.00	P-110	Yes	40.81	Yes			18,307.9	74.12
9	3	Casing Joints	5 1/2	20.00	P-110	Yes	40.75	Yes			18,226.4	155.65
11	5	Casing Joints	5 1/2	20.00	P-110	Yes	40.75	Yes			18,144.9	237.10
13	7	Casing Joints	5 1/2	20.00	P-110	Yes	40.74	Yes			18,063.4	318.57
15	9	Casing Joints	5 1/2	20.00	P-110	Yes	40.75	Yes			17,982.0	400.02
17		Marker Joint G	5 1/2	20.00	P-110	Yes	20.96	Yes			17,920.6	461.43
19	12	Casing Joints	5 1/2	20.00	P-110	Yes	40.83	Yes			17,839.0	543.02
21	14	Casing Joints	5 1/2	20.00	P-110	Yes	40.75	Yes			17,757.4	624.57
23	16	Casing Joints	5 1/2	20.00	P-110	Yes	40.84	Yes			17,676.2	705.78
25	18	Casing Joints	5 1/2	20.00	P-110	Yes	41.00	Yes			17,594.4	787.58
27	20	Casing Joints	5 1/2	20.00	P-110	Yes	39.50	Yes			17,514.1	867.87
29	22	Casing Joints	5 1/2	20.00	P-110	Yes	40.92	Yes			17,432.5	949.51
31	24	Casing Joints	5 1/2	20.00	P-110	Yes	40.62	Yes			17,350.9	1,031.08
33	26	Casing Joints	5 1/2	20.00	P-110	Yes	40.81	Yes			17,269.3	1,112.68
35	28	Casing Joints	5 1/2	20.00	P-110	Yes	40.78	Yes			17,188.1	1,193.86
37	30	Casing Joints	5 1/2	20.00	P-110	Yes	40.83	Yes			17,107.6	1,274.43
39	32	Casing Joints	5 1/2	20.00	P-110	Yes	40.70	Yes			17,026.3	1,355.66
41	34	Casing Joints	5 1/2	20.00	P-110	Yes	41.05	Yes			16,944.8	1,437.16
43	36	Casing Joints	5 1/2	20.00	P-110	Yes	40.53	Yes			16,863.9	1,518.06
45	38	Casing Joints	5 1/2	20.00	P-110	Yes	41.05	Yes			16,782.1	1,599.95
47	40	Casing Joints	5 1/2	20.00	P-110	Yes	40.72	Yes			16,700.5	1,681.50
49	42	Casing Joints	5 1/2	20.00	P-110	Yes	40.76	Yes			16,618.7	1,763.30
51	44	Casing Joints	5 1/2	20.00	P-110	Yes	40.87	Yes			16,537.1	1,844.94
53	46	Casing Joints	5 1/2	20.00	P-110	Yes	40.69	Yes			16,455.9	1,926.08
55	48	Casing Joints	5 1/2	20.00	P-110	Yes	40.80	Yes			16,374.2	2,007.76
57	50	Casing Joints	5 1/2	20.00	P-110	Yes	40.83	Yes			16,292.6	2,089.37
59	52	Casing Joints	5 1/2	20.00	P-110	Yes	40.81	Yes			16,210.9	2,171.08
61	54	Casing Joints	5 1/2	20.00	P-110	Yes	40.87	Yes			16,129.1	2,252.87
63	56	Casing Joints	5 1/2	20.00	P-110	Yes	40.80	Yes			16,047.4	2,334.57
65	58	Casing Joints	5 1/2	20.00	P-110	Yes	40.81	Yes			15,965.8	2,416.16
67	60	Casing Joints	5 1/2	20.00	P-110	Yes	40.70	Yes			15,884.3	2,497.68



Centralizer Depths

Well Name: Bost Farm 38C-8-L

Production, Set Depth: 18,382.0ftKB

API 05123514570000		Surface Legal Location SWNW 7 5N 66W		Field Name Wattenberg		State CO		Well Configuration Type Horizontal					
Ground Elevation (ft) 4,874.00		Original KB Elevation (ft) 4,902.00		KB-Ground Distance (ft) 28.00		Spud Date 3/30/2022 11:30		Rig Release Date 4/4/2022 23:30		On Production Date		Abandon Date	

Casing Run Tally

Run #	Ref #	Item Des	OD (in)	Wt (lb/ft)	Grade	Run?	Len (ft)	Centralized?	Ext Jw/ry	Connections	Top (ftKB)	Cum Len (ft)
69	62	Casing Joints	5 1/2	20.00	P-110	Yes	40.90	Yes			15,802.7	2,579.31
71	64	Casing Joints	5 1/2	20.00	P-110	Yes	40.37	Yes			15,722.2	2,659.80
73	66	Casing Joints	5 1/2	20.00	P-110	Yes	40.80	Yes			15,640.5	2,741.50
75	68	Casing Joints	5 1/2	20.00	P-110	Yes	41.06	Yes			15,559.6	2,822.41
77	70	Casing Joints	5 1/2	20.00	P-110	Yes	40.36	Yes			15,478.4	2,903.57
79	72	Casing Joints	5 1/2	20.00	P-110	Yes	39.65	Yes			15,398.2	2,983.81
81	74	Casing Joints	5 1/2	20.00	P-110	Yes	40.69	Yes			15,316.6	3,065.42
83	76	Casing Joints	5 1/2	20.00	P-110	Yes	40.93	Yes			15,235.0	3,147.03
85	78	Casing Joints	5 1/2	20.00	P-110	Yes	41.05	Yes			15,153.4	3,228.65
87	80	Casing Joints	5 1/2	20.00	P-110	Yes	40.56	Yes			15,072.2	3,309.81
89	82	Casing Joints	5 1/2	20.00	P-110	Yes	41.02	Yes			14,990.1	3,391.87
91	84	Casing Joints	5 1/2	20.00	P-110	Yes	40.78	Yes			14,908.5	3,473.55
93	86	Casing Joints	5 1/2	20.00	P-110	Yes	40.87	Yes			14,826.8	3,555.19
95	88	Casing Joints	5 1/2	20.00	P-110	Yes	41.05	Yes			14,745.0	3,636.99
97	90	Casing Joints	5 1/2	20.00	P-110	Yes	41.03	Yes			14,662.9	3,719.06
99	92	Casing Joints	5 1/2	20.00	P-110	Yes	40.83	Yes			14,581.3	3,800.66
101	94	Casing Joints	5 1/2	20.00	P-110	Yes	40.85	Yes			14,500.0	3,882.04
103	96	Casing Joints	5 1/2	20.00	P-110	Yes	41.00	Yes			14,418.1	3,963.87
105	98	Casing Joints	5 1/2	20.00	P-110	Yes	40.90	Yes			14,336.7	4,045.33
107	100	Casing Joints	5 1/2	20.00	P-110	Yes	40.60	Yes			14,255.2	4,126.81
109	102	Casing Joints	5 1/2	20.00	P-110	Yes	40.90	Yes			14,173.4	4,208.63
111	104	Casing Joints	5 1/2	20.00	P-110	Yes	40.88	Yes			14,091.5	4,290.51
113	106	Casing Joints	5 1/2	20.00	P-110	Yes	40.82	Yes			14,010.1	4,371.90
115	108	Casing Joints	5 1/2	20.00	P-110	Yes	40.84	Yes			13,928.2	4,453.80
117	110	Casing Joints	5 1/2	20.00	P-110	Yes	40.57	Yes			13,846.8	4,535.20
119	112	Casing Joints	5 1/2	20.00	P-110	Yes	40.90	Yes			13,765.3	4,616.67
121	114	Casing Joints	5 1/2	20.00	P-110	Yes	40.47	Yes			13,684.3	4,697.70
123	116	Casing Joints	5 1/2	20.00	P-110	Yes	40.52	Yes			13,602.7	4,779.27
125	118	Casing Joints	5 1/2	20.00	P-110	Yes	40.85	Yes			13,520.8	4,861.20
127	120	Casing Joints	5 1/2	20.00	P-110	Yes	40.89	Yes			13,439.3	4,942.68
129		Marker Joint H	5 1/2	20.00	P-110	Yes	20.45	Yes			13,377.9	5,004.06



Centralizer Depths

Well Name: Bost Farm 38C-8-L

Production, Set Depth: 18,382.0ftKB

API 05123514570000		Surface Legal Location SWNW 7 5N 66W		Field Name Wattenberg		State CO		Well Configuration Type Horizontal					
Ground Elevation (ft) 4,874.00		Original KB Elevation (ft) 4,902.00		KB-Ground Distance (ft) 28.00		Spud Date 3/30/2022 11:30		Rig Release Date 4/4/2022 23:30		On Production Date		Abandon Date	

Casing Run Tally

Run #	Ref #	Item Des	OD (in)	Wt (lb/ft)	Grade	Run?	Len (ft)	Centralized?	Ext Jwlry	Connections	Top (ftKB)	Cum Len (ft)
130	122	Casing Joints	5 1/2	20.00	P-110	Yes	40.71	Yes			13,337.2	5,044.77
132	124	Casing Joints	5 1/2	20.00	P-110	Yes	39.18	Yes			13,257.0	5,124.99
134	126	Casing Joints	5 1/2	20.00	P-110	Yes	40.90	Yes			13,175.4	5,206.64
137	129	Casing Joints	5 1/2	20.00	P-110	Yes	40.51	Yes			13,053.1	5,328.89
139	131	Casing Joints	5 1/2	20.00	P-110	Yes	40.80	Yes			12,971.8	5,410.19
141	133	Casing Joints	5 1/2	20.00	P-110	Yes	41.07	Yes			12,890.8	5,491.23
143	135	Casing Joints	5 1/2	20.00	P-110	Yes	41.05	Yes			12,808.8	5,573.20
145	137	Casing Joints	5 1/2	20.00	P-110	Yes	40.90	Yes			12,727.6	5,654.40
147	139	Casing Joints	5 1/2	20.00	P-110	Yes	40.84	Yes			12,645.7	5,736.31
149	141	Casing Joints	5 1/2	20.00	P-110	Yes	41.08	Yes			12,563.7	5,818.34
151	143	Casing Joints	5 1/2	20.00	P-110	Yes	40.53	Yes			12,482.2	5,899.82
153	145	Casing Joints	5 1/2	20.00	P-110	Yes	40.98	Yes			12,400.3	5,981.75
155	147	Casing Joints	5 1/2	20.00	P-110	Yes	40.88	Yes			12,318.7	6,063.29
157	149	Casing Joints	5 1/2	20.00	P-110	Yes	41.06	Yes			12,236.7	6,145.29
159	151	Casing Joints	5 1/2	20.00	P-110	Yes	40.95	Yes			12,154.9	6,227.15
161	153	Casing Joints	5 1/2	20.00	P-110	Yes	41.05	Yes			12,072.9	6,309.07
163	155	Casing Joints	5 1/2	20.00	P-110	Yes	40.91	Yes			11,991.0	6,391.05
165	157	Casing Joints	5 1/2	20.00	P-110	Yes	40.87	Yes			11,909.2	6,472.82
167	159	Casing Joints	5 1/2	20.00	P-110	Yes	38.44	Yes			11,829.9	6,552.06
169	161	Casing Joints	5 1/2	20.00	P-110	Yes	40.84	Yes			11,748.3	6,633.74
171	163	Casing Joints	5 1/2	20.00	P-110	Yes	39.93	Yes			11,667.4	6,714.59
173	165	Casing Joints	5 1/2	20.00	P-110	Yes	40.93	Yes			11,585.6	6,796.43
175	167	Casing Joints	5 1/2	20.00	P-110	Yes	40.81	Yes			11,503.9	6,878.07
177	169	Casing Joints	5 1/2	20.00	P-110	Yes	40.82	Yes			11,422.3	6,959.73
179	171	Casing Joints	5 1/2	20.00	P-110	Yes	40.88	Yes			11,340.4	7,041.59
181	173	Casing Joints	5 1/2	20.00	P-110	Yes	40.54	Yes			11,259.0	7,122.96
183	175	Casing Joints	5 1/2	20.00	P-110	Yes	40.82	Yes			11,179.7	7,202.32
185	177	Casing Joints	5 1/2	20.00	P-110	Yes	40.62	Yes			11,098.0	7,283.99
187	179	Casing Joints	5 1/2	20.00	P-110	Yes	41.07	Yes			11,016.1	7,365.90
189	181	Casing Joints	5 1/2	20.00	P-110	Yes	40.93	Yes			10,934.6	7,447.38
191	183	Casing Joints	5 1/2	20.00	P-110	Yes	40.88	Yes			10,852.8	7,529.18



Centralizer Depths

Well Name: Bost Farm 38C-8-L

Production, Set Depth: 18,382.0ftKB

API 05123514570000		Surface Legal Location SWNW 7 5N 66W		Field Name Wattenberg		State CO		Well Configuration Type Horizontal					
Ground Elevation (ft) 4,874.00		Original KB Elevation (ft) 4,902.00		KB-Ground Distance (ft) 28.00		Spud Date 3/30/2022 11:30		Rig Release Date 4/4/2022 23:30		On Production Date		Abandon Date	

Casing Run Tally

Run #	Ref #	Item Des	OD (in)	Wt (lb/ft)	Grade	Run?	Len (ft)	Centralized?	Ext Jwlry	Connections	Top (ftKB)	Cum Len (ft)
193	185	Casing Joints	5 1/2	20.00	P-110	Yes	40.43	Yes			10,772.6	7,609.39
195	187	Casing Joints	5 1/2	20.00	P-110	Yes	40.80	Yes			10,690.9	7,691.06
197	189	Casing Joints	5 1/2	20.00	P-110	Yes	40.55	Yes			10,609.5	7,772.48
199	191	Casing Joints	5 1/2	20.00	P-110	Yes	40.53	Yes			10,527.9	7,854.09
201	193	Casing Joints	5 1/2	20.00	P-110	Yes	40.50	Yes			10,446.4	7,935.64
203	195	Casing Joints	5 1/2	20.00	P-110	Yes	40.36	Yes			10,365.1	8,016.87
205	197	Casing Joints	5 1/2	20.00	P-110	Yes	40.75	Yes			10,283.4	8,098.57
207	199	Casing Joints	5 1/2	20.00	P-110	Yes	40.51	Yes			10,202.9	8,179.06
209	201	Casing Joints	5 1/2	20.00	P-110	Yes	40.42	Yes			10,122.0	8,260.00
211	203	Casing Joints	5 1/2	20.00	P-110	Yes	40.75	Yes			10,040.4	8,341.63
213	205	Casing Joints	5 1/2	20.00	P-110	Yes	40.80	Yes			9,959.0	8,423.00
215	207	Casing Joints	5 1/2	20.00	P-110	Yes	40.96	Yes			9,877.6	8,504.36
217	209	Casing Joints	5 1/2	20.00	P-110	Yes	40.62	Yes			9,796.1	8,585.93
219	211	Casing Joints	5 1/2	20.00	P-110	Yes	39.53	Yes			9,715.7	8,666.30
221	213	Casing Joints	5 1/2	20.00	P-110	Yes	40.56	Yes			9,634.2	8,747.82
223	215	Casing Joints	5 1/2	20.00	P-110	Yes	40.67	Yes			9,552.4	8,829.56
225	217	Casing Joints	5 1/2	20.00	P-110	Yes	40.82	Yes			9,470.8	8,911.15
227	219	Casing Joints	5 1/2	20.00	P-110	Yes	40.75	Yes			9,389.4	8,992.63
229	221	Casing Joints	5 1/2	20.00	P-110	Yes	39.48	Yes			9,309.1	9,072.85
231	223	Casing Joints	5 1/2	20.00	P-110	Yes	41.07	Yes			9,227.2	9,154.80
233	225	Casing Joints	5 1/2	20.00	P-110	Yes	40.52	Yes			9,145.9	9,236.14
235	227	Casing Joints	5 1/2	20.00	P-110	Yes	40.52	Yes			9,064.6	9,317.41
237	229	Casing Joints	5 1/2	20.00	P-110	Yes	40.76	Yes			8,983.3	9,398.70
239	231	Casing Joints	5 1/2	20.00	P-110	Yes	40.73	Yes			8,901.8	9,480.20
241	233	Casing Joints	5 1/2	20.00	P-110	Yes	40.73	Yes			8,820.1	9,561.90
242	234	Casing Joints	5 1/2	20.00	P-110	Yes	40.90	Yes			8,779.2	9,602.80
243	235	Casing Joints	5 1/2	20.00	P-110	Yes	40.83	Yes			8,738.4	9,643.63
244	236	Casing Joints	5 1/2	20.00	P-110	Yes	40.84	Yes			8,697.5	9,684.47
245	237	Casing Joints	5 1/2	20.00	P-110	Yes	39.73	Yes			8,657.8	9,724.20
246	238	Casing Joints	5 1/2	20.00	P-110	Yes	40.48	Yes			8,617.3	9,764.68
247	239	Casing Joints	5 1/2	20.00	P-110	Yes	40.95	Yes			8,576.4	9,805.63



Centralizer Depths

Well Name: Bost Farm 38C-8-L

Production, Set Depth: 18,382.0ftKB

API 05123514570000		Surface Legal Location SWNW 7 5N 66W		Field Name Wattenberg		State CO		Well Configuration Type Horizontal					
Ground Elevation (ft) 4,874.00		Original KB Elevation (ft) 4,902.00		KB-Ground Distance (ft) 28.00		Spud Date 3/30/2022 11:30		Rig Release Date 4/4/2022 23:30		On Production Date		Abandon Date	

Casing Run Tally

Run #	Ref #	Item Des	OD (in)	Wt (lb/ft)	Grade	Run?	Len (ft)	Centralized?	Ext Jw/ry	Connections	Top (ftKB)	Cum Len (ft)
248	240	Casing Joints	5 1/2	20.00	P-110	Yes	40.52	Yes			8,535.8	9,846.15
249	241	Casing Joints	5 1/2	20.00	P-110	Yes	40.44	Yes			8,495.4	9,886.59
250	242	Casing Joints	5 1/2	20.00	P-110	Yes	40.52	Yes			8,454.9	9,927.11
251	243	Casing Joints	5 1/2	20.00	P-110	Yes	40.75	Yes			8,414.1	9,967.86
252		Marker Joint I	5 1/2	20.00	P-110	Yes	20.30	Yes			8,393.8	9,988.16
253	244	Casing Joints	5 1/2	20.00	P-110	Yes	40.48	Yes			8,353.4	10,028.64
254	245	Casing Joints	5 1/2	20.00	P-110	Yes	40.73	Yes			8,312.6	10,069.37
255	246	Casing Joints	5 1/2	20.00	P-110	Yes	40.86	Yes			8,271.8	10,110.23
256	247	Casing Joints	5 1/2	20.00	P-110	Yes	40.76	Yes			8,231.0	10,150.99
257	248	Casing Joints	5 1/2	20.00	P-110	Yes	40.36	Yes			8,190.7	10,191.35
258	249	Casing Joints	5 1/2	20.00	P-110	Yes	40.75	Yes			8,149.9	10,232.10
259	250	Casing Joints	5 1/2	20.00	P-110	Yes	40.43	Yes			8,109.5	10,272.53
260	251	Casing Joints	5 1/2	20.00	P-110	Yes	40.90	Yes			8,068.6	10,313.43
261	252	Casing Joints	5 1/2	20.00	P-110	Yes	40.83	Yes			8,027.7	10,354.26
262	253	Casing Joints	5 1/2	20.00	P-110	Yes	40.47	Yes			7,987.3	10,394.73
263	254	Casing Joints	5 1/2	20.00	P-110	Yes	40.83	Yes			7,946.4	10,435.56
264	255	Casing Joints	5 1/2	20.00	P-110	Yes	40.85	Yes			7,905.6	10,476.41
265	256	Casing Joints	5 1/2	20.00	P-110	Yes	41.06	Yes			7,864.5	10,517.47
266	257	Casing Joints	5 1/2	20.00	P-110	Yes	40.93	Yes			7,823.6	10,558.40
267	258	Casing Joints	5 1/2	20.00	P-110	Yes	40.59	Yes			7,783.0	10,598.99
268	259	Casing Joints	5 1/2	20.00	P-110	Yes	41.07	Yes			7,741.9	10,640.06
269	260	Casing Joints	5 1/2	20.00	P-110	Yes	41.05	Yes			7,700.9	10,681.11
270	261	Casing Joints	5 1/2	20.00	P-110	Yes	40.88	Yes			7,660.0	10,721.99
271	262	Casing Joints	5 1/2	20.00	P-110	Yes	40.84	Yes			7,619.2	10,762.83
272	263	Casing Joints	5 1/2	20.00	P-110	Yes	40.83	Yes			7,578.3	10,803.66
273	264	Casing Joints	5 1/2	20.00	P-110	Yes	40.64	Yes			7,537.7	10,844.30
274	265	Casing Joints	5 1/2	20.00	P-110	Yes	41.10	Yes			7,496.6	10,885.40
275	266	Casing Joints	5 1/2	20.00	P-110	Yes	40.88	Yes			7,455.7	10,926.28
276	267	Casing Joints	5 1/2	20.00	P-110	Yes	40.95	Yes			7,414.8	10,967.23
277	268	Casing Joints	5 1/2	20.00	P-110	Yes	40.83	Yes			7,373.9	11,008.06
278	269	Casing Joints	5 1/2	20.00	P-110	Yes	41.08	Yes			7,332.9	11,049.14



Centralizer Depths

Well Name: Bost Farm 38C-8-L

Production, Set Depth: 18,382.0ftKB

API 05123514570000		Surface Legal Location SWNW 7 5N 66W		Field Name Wattenberg		State CO		Well Configuration Type Horizontal					
Ground Elevation (ft) 4,874.00		Original KB Elevation (ft) 4,902.00		KB-Ground Distance (ft) 28.00		Spud Date 3/30/2022 11:30		Rig Release Date 4/4/2022 23:30		On Production Date		Abandon Date	

Casing Run Tally

Run #	Ref #	Item Des	OD (in)	Wt (lb/ft)	Grade	Run?	Len (ft)	Centralized?	Ext Jwlry	Connections	Top (ftKB)	Cum Len (ft)
279	270	Casing Joints	5 1/2	20.00	P-110	Yes	40.84	Yes			7,292.0	11,089.98
280	271	Casing Joints	5 1/2	20.00	P-110	Yes	40.86	Yes			7,251.2	11,130.84
281	272	Casing Joints	5 1/2	20.00	P-110	Yes	41.07	Yes			7,210.1	11,171.91
282	273	Casing Joints	5 1/2	20.00	P-110	Yes	41.05	Yes			7,169.0	11,212.96
283	274	Casing Joints	5 1/2	20.00	P-110	Yes	40.97	Yes			7,128.1	11,253.93
284		Marker Joint	5 1/2	20.00	P-110	Yes	10.24	Yes			7,117.8	11,264.17
285	275	Casing Joints	5 1/2	20.00	P-110	Yes	40.79	Yes			7,077.0	11,304.96
286	276	Casing Joints	5 1/2	20.00	P-110	Yes	40.80	Yes			7,036.2	11,345.76
287	277	Casing Joints	5 1/2	20.00	P-110	Yes	40.84	Yes			6,995.4	11,386.60
288	278	Casing Joints	5 1/2	20.00	P-110	Yes	40.96	Yes			6,954.4	11,427.56
289	279	Casing Joints	5 1/2	20.00	P-110	Yes	40.83	Yes			6,913.6	11,468.39
290	280	Casing Joints	5 1/2	20.00	P-110	Yes	40.97	Yes			6,872.6	11,509.36
291	281	Casing Joints	5 1/2	20.00	P-110	Yes	40.80	Yes			6,831.8	11,550.16
292	282	Casing Joints	5 1/2	20.00	P-110	Yes	40.78	Yes			6,791.1	11,590.94
293	283	Casing Joints	5 1/2	20.00	P-110	Yes	40.62	Yes			6,750.4	11,631.56
294	284	Casing Joints	5 1/2	20.00	P-110	Yes	40.74	Yes			6,709.7	11,672.30
295	285	Casing Joints	5 1/2	20.00	P-110	Yes	40.64	Yes			6,669.1	11,712.94
296	286	Casing Joints	5 1/2	20.00	P-110	Yes	40.72	Yes			6,628.3	11,753.66
297	287	Casing Joints	5 1/2	20.00	P-110	Yes	40.37	Yes			6,588.0	11,794.03
298	288	Casing Joints	5 1/2	20.00	P-110	Yes	40.87	Yes			6,547.1	11,834.90
299	289	Casing Joints	5 1/2	20.00	P-110	Yes	40.82	Yes			6,506.3	11,875.72
300	290	Casing Joints	5 1/2	20.00	P-110	Yes	40.93	Yes			6,465.3	11,916.65
301	291	Casing Joints	5 1/2	20.00	P-110	Yes	40.74	Yes			6,424.6	11,957.39
302	292	Casing Joints	5 1/2	20.00	P-110	Yes	40.65	Yes			6,384.0	11,998.04
303	293	Casing Joints	5 1/2	20.00	P-110	Yes	39.83	Yes			6,344.1	12,037.87
304	294	Casing Joints	5 1/2	20.00	P-110	Yes	40.80	Yes			6,303.3	12,078.67
305	295	Casing Joints	5 1/2	20.00	P-110	Yes	40.75	Yes			6,262.6	12,119.42
306	296	Casing Joints	5 1/2	20.00	P-110	Yes	40.85	Yes			6,221.7	12,160.27
307	297	Casing Joints	5 1/2	20.00	P-110	Yes	39.89	Yes			6,181.8	12,200.16
308	298	Casing Joints	5 1/2	20.00	P-110	Yes	40.88	Yes			6,141.0	12,241.04
309	299	Casing Joints	5 1/2	20.00	P-110	Yes	40.81	Yes			6,100.2	12,281.85



Centralizer Depths

Well Name: Bost Farm 38C-8-L

Production, Set Depth: 18,382.0ftKB

API 05123514570000		Surface Legal Location SWNW 7 5N 66W		Field Name Wattenberg		State CO		Well Configuration Type Horizontal					
Ground Elevation (ft) 4,874.00		Original KB Elevation (ft) 4,902.00		KB-Ground Distance (ft) 28.00		Spud Date 3/30/2022 11:30		Rig Release Date 4/4/2022 23:30		On Production Date		Abandon Date	

Casing Run Tally

Run #	Ref #	Item Des	OD (in)	Wt (lb/ft)	Grade	Run?	Len (ft)	Centralized?	Ext Jwlry	Connections	Top (ftKB)	Cum Len (ft)
310	300	Casing Joints	5 1/2	20.00	P-110	Yes	40.80	Yes			6,059.4	12,322.65
311	301	Casing Joints	5 1/2	20.00	P-110	Yes	41.06	Yes			6,018.3	12,363.71
312	302	Casing Joints	5 1/2	20.00	P-110	Yes	40.87	Yes			5,977.4	12,404.58
313	303	Casing Joints	5 1/2	20.00	P-110	Yes	40.78	Yes			5,936.6	12,445.36
314	304	Casing Joints	5 1/2	20.00	P-110	Yes	39.73	Yes			5,896.9	12,485.09
315	305	Casing Joints	5 1/2	20.00	P-110	Yes	40.82	Yes			5,856.1	12,525.91
316	306	Casing Joints	5 1/2	20.00	P-110	Yes	40.64	Yes			5,815.5	12,566.55
317	307	Casing Joints	5 1/2	20.00	P-110	Yes	39.66	Yes			5,775.8	12,606.21
318	308	Casing Joints	5 1/2	20.00	P-110	Yes	40.82	Yes			5,735.0	12,647.03
319	309	Casing Joints	5 1/2	20.00	P-110	Yes	40.54	Yes			5,694.4	12,687.57
320	310	Casing Joints	5 1/2	20.00	P-110	Yes	40.45	Yes			5,654.0	12,728.02
321	311	Casing Joints	5 1/2	20.00	P-110	Yes	40.82	Yes			5,613.2	12,768.84
322	312	Casing Joints	5 1/2	20.00	P-110	Yes	40.81	Yes			5,572.3	12,809.65
323	313	Casing Joints	5 1/2	20.00	P-110	Yes	40.80	Yes			5,531.6	12,850.45
324	314	Casing Joints	5 1/2	20.00	P-110	Yes	40.95	Yes			5,490.6	12,891.40
325	315	Casing Joints	5 1/2	20.00	P-110	Yes	40.82	Yes			5,449.8	12,932.22
326	316	Casing Joints	5 1/2	20.00	P-110	Yes	40.87	Yes			5,408.9	12,973.09
327	317	Casing Joints	5 1/2	20.00	P-110	Yes	39.11	Yes			5,369.8	13,012.20
328	318	Casing Joints	5 1/2	20.00	P-110	Yes	40.80	Yes			5,329.0	13,053.00
329	319	Casing Joints	5 1/2	20.00	P-110	Yes	40.72	Yes			5,288.3	13,093.72
330	320	Casing Joints	5 1/2	20.00	P-110	Yes	40.74	Yes			5,247.5	13,134.46
331	321	Casing Joints	5 1/2	20.00	P-110	Yes	40.75	Yes			5,206.8	13,175.21
332	322	Casing Joints	5 1/2	20.00	P-110	Yes	39.63	Yes			5,167.2	13,214.84
333	323	Casing Joints	5 1/2	20.00	P-110	Yes	41.03	Yes			5,126.1	13,255.87
334	324	Casing Joints	5 1/2	20.00	P-110	Yes	39.80	Yes			5,086.3	13,295.67
335	325	Casing Joints	5 1/2	20.00	P-110	Yes	40.80	Yes			5,045.5	13,336.47
336	326	Casing Joints	5 1/2	20.00	P-110	Yes	40.53	Yes			5,005.0	13,377.00
337	327	Casing Joints	5 1/2	20.00	P-110	Yes	41.02	Yes			4,964.0	13,418.02
338	328	Casing Joints	5 1/2	20.00	P-110	Yes	40.83	Yes			4,923.2	13,458.85
339	329	Casing Joints	5 1/2	20.00	P-110	Yes	41.05	Yes			4,882.1	13,499.90
340	330	Casing Joints	5 1/2	20.00	P-110	Yes	40.81	Yes			4,841.3	13,540.71



Centralizer Depths

Well Name: Bost Farm 38C-8-L

Production, Set Depth: 18,382.0ftKB

API 05123514570000		Surface Legal Location SWNW 7 5N 66W		Field Name Wattenberg		State CO		Well Configuration Type Horizontal					
Ground Elevation (ft) 4,874.00		Original KB Elevation (ft) 4,902.00		KB-Ground Distance (ft) 28.00		Spud Date 3/30/2022 11:30		Rig Release Date 4/4/2022 23:30		On Production Date		Abandon Date	

Casing Run Tally

Run #	Ref #	Item Des	OD (in)	Wt (lb/ft)	Grade	Run?	Len (ft)	Centralized?	Ext Jwlry	Connections	Top (ftKB)	Cum Len (ft)
341	331	Casing Joints	5 1/2	20.00	P-110	Yes	40.90	Yes			4,800.4	13,581.61
342	332	Casing Joints	5 1/2	20.00	P-110	Yes	41.07	Yes			4,759.3	13,622.68
343	333	Casing Joints	5 1/2	20.00	P-110	Yes	40.50	Yes			4,718.8	13,663.18
344	334	Casing Joints	5 1/2	20.00	P-110	Yes	40.65	Yes			4,678.2	13,703.83
345	335	Casing Joints	5 1/2	20.00	P-110	Yes	40.64	Yes			4,637.5	13,744.47
346	336	Casing Joints	5 1/2	20.00	P-110	Yes	40.88	Yes			4,596.7	13,785.35
347	337	Casing Joints	5 1/2	20.00	P-110	Yes	40.77	Yes			4,555.9	13,826.12
348	338	Casing Joints	5 1/2	20.00	P-110	Yes	40.92	Yes			4,515.0	13,867.04
349	339	Casing Joints	5 1/2	20.00	P-110	Yes	41.10	Yes			4,473.9	13,908.14
350	340	Casing Joints	5 1/2	20.00	P-110	Yes	40.81	Yes			4,433.0	13,948.95
351	341	Casing Joints	5 1/2	20.00	P-110	Yes	40.93	Yes			4,392.1	13,989.88
352	342	Casing Joints	5 1/2	20.00	P-110	Yes	41.05	Yes			4,351.1	14,030.93
353	343	Casing Joints	5 1/2	20.00	P-110	Yes	40.56	Yes			4,310.5	14,071.49
354	344	Casing Joints	5 1/2	20.00	P-110	Yes	40.80	Yes			4,269.7	14,112.29
355	345	Casing Joints	5 1/2	20.00	P-110	Yes	40.98	Yes			4,228.7	14,153.27
356	346	Casing Joints	5 1/2	20.00	P-110	Yes	40.50	Yes			4,188.2	14,193.77
357	347	Casing Joints	5 1/2	20.00	P-110	Yes	40.93	Yes			4,147.3	14,234.70
358	348	Casing Joints	5 1/2	20.00	P-110	Yes	40.89	Yes			4,106.4	14,275.59
359	349	Casing Joints	5 1/2	20.00	P-110	Yes	40.51	Yes			4,065.9	14,316.10
360	350	Casing Joints	5 1/2	20.00	P-110	Yes	40.50	Yes			4,025.4	14,356.60
361	351	Casing Joints	5 1/2	20.00	P-110	Yes	40.97	Yes			3,984.4	14,397.57
362	352	Casing Joints	5 1/2	20.00	P-110	Yes	40.76	Yes			3,943.7	14,438.33
363	353	Casing Joints	5 1/2	20.00	P-110	Yes	40.98	Yes			3,902.7	14,479.31
364	354	Casing Joints	5 1/2	20.00	P-110	Yes	40.42	Yes			3,862.3	14,519.73
365	355	Casing Joints	5 1/2	20.00	P-110	Yes	41.07	Yes			3,821.2	14,560.80
366	356	Casing Joints	5 1/2	20.00	P-110	Yes	40.85	Yes			3,780.4	14,601.65
367	357	Casing Joints	5 1/2	20.00	P-110	Yes	41.06	Yes			3,739.3	14,642.71
368	358	Casing Joints	5 1/2	20.00	P-110	Yes	40.87	Yes			3,698.4	14,683.58
369	359	Casing Joints	5 1/2	20.00	P-110	Yes	40.50	Yes			3,657.9	14,724.08
370	360	Casing Joints	5 1/2	20.00	P-110	Yes	40.90	Yes			3,617.0	14,764.98
371	361	Casing Joints	5 1/2	20.00	P-110	Yes	41.06	Yes			3,576.0	14,806.04



Centralizer Depths

Well Name: Bost Farm 38C-8-L

Production, Set Depth: 18,382.0ftKB

API 05123514570000		Surface Legal Location SWNW 7 5N 66W		Field Name Wattenberg		State CO		Well Configuration Type Horizontal					
Ground Elevation (ft) 4,874.00		Original KB Elevation (ft) 4,902.00		KB-Ground Distance (ft) 28.00		Spud Date 3/30/2022 11:30		Rig Release Date 4/4/2022 23:30		On Production Date		Abandon Date	

Casing Run Tally

Run #	Ref #	Item Des	OD (in)	Wt (lb/ft)	Grade	Run?	Len (ft)	Centralized?	Ext Jwlry	Connections	Top (ftKB)	Cum Len (ft)
372	362	Casing Joints	5 1/2	20.00	P-110	Yes	40.85	Yes			3,535.1	14,846.89
373	363	Casing Joints	5 1/2	20.00	P-110	Yes	40.74	Yes			3,494.4	14,887.63
374	364	Casing Joints	5 1/2	20.00	P-110	Yes	40.55	Yes			3,453.8	14,928.18
375	365	Casing Joints	5 1/2	20.00	P-110	Yes	40.50	Yes			3,413.3	14,968.68
376	366	Casing Joints	5 1/2	20.00	P-110	Yes	40.73	Yes			3,372.6	15,009.41
377	367	Casing Joints	5 1/2	20.00	P-110	Yes	40.89	Yes			3,331.7	15,050.30
378	368	Casing Joints	5 1/2	20.00	P-110	Yes	40.78	Yes			3,290.9	15,091.08
379	369	Casing Joints	5 1/2	20.00	P-110	Yes	40.87	Yes			3,250.1	15,131.95
380	370	Casing Joints	5 1/2	20.00	P-110	Yes	40.98	Yes			3,209.1	15,172.93
381	371	Casing Joints	5 1/2	20.00	P-110	Yes	40.75	Yes			3,168.3	15,213.68
382	372	Casing Joints	5 1/2	20.00	P-110	Yes	40.89	Yes			3,127.4	15,254.57
383	373	Casing Joints	5 1/2	20.00	P-110	Yes	41.08	Yes			3,086.4	15,295.65
384	374	Casing Joints	5 1/2	20.00	P-110	Yes	40.98	Yes			3,045.4	15,336.63
385		Casing Pup Joint	5 1/2	20.00	P-110	Yes	5.00	Yes			3,040.8	15,341.63
387		Casing Pup Joint	5 1/2	20.00	P-110	Yes	5.10	Yes			3,020.6	15,361.84
388		Marker Joint B	5 1/2	20.00	P-110	Yes	9.97	Yes			3,010.7	15,371.81
389	375	Casing Joints	5 1/2	20.00	P-110	Yes	39.57	Yes			2,971.1	15,411.38
390	376	Casing Joints	5 1/2	20.00	P-110	Yes	40.95	Yes			2,930.1	15,452.33
391	377	Casing Joints	5 1/2	20.00	P-110	Yes	40.89	Yes			2,889.2	15,493.22
392	378	Casing Joints	5 1/2	20.00	P-110	Yes	40.67	Yes			2,848.6	15,533.89
393	379	Casing Joints	5 1/2	20.00	P-110	Yes	41.05	Yes			2,807.5	15,574.94
394	380	Casing Joints	5 1/2	20.00	P-110	Yes	40.90	Yes			2,766.6	15,615.84
395	381	Casing Joints	5 1/2	20.00	P-110	Yes	40.86	Yes			2,725.8	15,656.70
396	382	Casing Joints	5 1/2	20.00	P-110	Yes	40.57	Yes			2,685.2	15,697.27
397	383	Casing Joints	5 1/2	20.00	P-110	Yes	40.82	Yes			2,644.4	15,738.09
398	384	Casing Joints	5 1/2	20.00	P-110	Yes	40.38	Yes			2,604.0	15,778.47
399	385	Casing Joints	5 1/2	20.00	P-110	Yes	40.81	Yes			2,563.2	15,819.28
400	386	Casing Joints	5 1/2	20.00	P-110	Yes	40.76	Yes			2,522.4	15,860.04
401	387	Casing Joints	5 1/2	20.00	P-110	Yes	40.83	Yes			2,481.6	15,900.87
402	388	Casing Joints	5 1/2	20.00	P-110	Yes	40.27	Yes			2,441.3	15,941.14
403	389	Casing Joints	5 1/2	20.00	P-110	Yes	40.87	Yes			2,400.4	15,982.01



Centralizer Depths

Well Name: Bost Farm 38C-8-L

Production, Set Depth: 18,382.0ftKB

API 05123514570000		Surface Legal Location SWNW 7 5N 66W		Field Name Wattenberg		State CO		Well Configuration Type Horizontal					
Ground Elevation (ft) 4,874.00		Original KB Elevation (ft) 4,902.00		KB-Ground Distance (ft) 28.00		Spud Date 3/30/2022 11:30		Rig Release Date 4/4/2022 23:30		On Production Date		Abandon Date	

Casing Run Tally

Run #	Ref #	Item Des	OD (in)	Wt (lb/ft)	Grade	Run?	Len (ft)	Centralized?	Ext Jw/ry	Connections	Top (ftKB)	Cum Len (ft)
404	390	Casing Joints	5 1/2	20.00	P-110	Yes	40.93	Yes			2,359.5	16,022.94
405	391	Casing Joints	5 1/2	20.00	P-110	Yes	40.60	Yes			2,318.9	16,063.54
406	392	Casing Joints	5 1/2	20.00	P-110	Yes	40.83	Yes			2,278.1	16,104.37
407	393	Casing Joints	5 1/2	20.00	P-110	Yes	40.82	Yes			2,237.3	16,145.19
408	394	Casing Joints	5 1/2	20.00	P-110	Yes	40.88	Yes			2,196.4	16,186.07
409	395	Casing Joints	5 1/2	20.00	P-110	Yes	40.82	Yes			2,155.6	16,226.89
410	396	Casing Joints	5 1/2	20.00	P-110	Yes	38.75	Yes			2,116.8	16,265.64
411	397	Casing Joints	5 1/2	20.00	P-110	Yes	39.76	Yes			2,077.1	16,305.40
412	398	Casing Joints	5 1/2	20.00	P-110	Yes	39.37	Yes			2,037.7	16,344.77
413	399	Casing Joints	5 1/2	20.00	P-110	Yes	41.05	Yes			1,996.6	16,385.82
414	400	Casing Joints	5 1/2	20.00	P-110	Yes	40.84	Yes			1,955.8	16,426.66
415	401	Casing Joints	5 1/2	20.00	P-110	Yes	41.01	Yes			1,914.8	16,467.67
416	402	Casing Joints	5 1/2	20.00	P-110	Yes	40.91	Yes			1,873.9	16,508.58
417	403	Casing Joints	5 1/2	20.00	P-110	Yes	40.82	Yes			1,833.1	16,549.40
418	404	Casing Joints	5 1/2	20.00	P-110	Yes	40.06	Yes			1,793.0	16,589.46
419	405	Casing Joints	5 1/2	20.00	P-110	Yes	40.80	Yes			1,752.2	16,630.26
420	406	Casing Joints	5 1/2	20.00	P-110	Yes	41.07	Yes			1,711.1	16,671.33
421	407	Casing Joints	5 1/2	20.00	P-110	Yes	40.82	Yes			1,670.3	16,712.15
422	408	Casing Joints	5 1/2	20.00	P-110	Yes	41.10	Yes			1,629.2	16,753.25
423	409	Casing Joints	5 1/2	20.00	P-110	Yes	41.07	Yes			1,588.1	16,794.32
424	410	Casing Joints	5 1/2	20.00	P-110	Yes	40.90	Yes			1,547.2	16,835.22
425	411	Casing Joints	5 1/2	20.00	P-110	Yes	40.92	Yes			1,506.3	16,876.14
426	412	Casing Joints	5 1/2	20.00	P-110	Yes	40.65	Yes			1,465.7	16,916.79
427	413	Casing Joints	5 1/2	20.00	P-110	Yes	41.03	Yes			1,424.6	16,957.82
428	414	Casing Joints	5 1/2	20.00	P-110	Yes	40.82	Yes			1,383.8	16,998.64
429	415	Casing Joints	5 1/2	20.00	P-110	Yes	40.64	Yes			1,343.2	17,039.28
430	416	Casing Joints	5 1/2	20.00	P-110	Yes	40.88	Yes			1,302.3	17,080.16
431	417	Casing Joints	5 1/2	20.00	P-110	Yes	41.07	Yes			1,261.2	17,121.23
432	418	Casing Joints	5 1/2	20.00	P-110	Yes	40.84	Yes			1,220.4	17,162.07
433	419	Casing Joints	5 1/2	20.00	P-110	Yes	40.93	Yes			1,179.5	17,203.00
434	420	Casing Joints	5 1/2	20.00	P-110	Yes	40.82	Yes			1,138.6	17,243.82



Centralizer Depths

Well Name: Bost Farm 38C-8-L

Production, Set Depth: 18,382.0ftKB

API 05123514570000		Surface Legal Location SWNW 7 5N 66W		Field Name Wattenberg		State CO		Well Configuration Type Horizontal					
Ground Elevation (ft) 4,874.00		Original KB Elevation (ft) 4,902.00		KB-Ground Distance (ft) 28.00		Spud Date 3/30/2022 11:30		Rig Release Date 4/4/2022 23:30		On Production Date		Abandon Date	

Casing Run Tally

Run #	Ref #	Item Des	OD (in)	Wt (lb/ft)	Grade	Run?	Len (ft)	Centralized?	Ext Jw/ry	Connections	Top (ftKB)	Cum Len (ft)
435	421	Casing Joints	5 1/2	20.00	P-110	Yes	40.80	Yes			1,097.8	17,284.62
436	422	Casing Joints	5 1/2	20.00	P-110	Yes	40.87	Yes			1,057.0	17,325.49
437	423	Casing Joints	5 1/2	20.00	P-110	Yes	40.36	Yes			1,016.6	17,365.85
438	424	Casing Joints	5 1/2	20.00	P-110	Yes	40.79	Yes			975.8	17,406.64
439	425	Casing Joints	5 1/2	20.00	P-110	Yes	41.08	Yes			934.7	17,447.72
440	426	Casing Joints	5 1/2	20.00	P-110	Yes	40.81	Yes			893.9	17,488.53
441	427	Casing Joints	5 1/2	20.00	P-110	Yes	40.75	Yes			853.2	17,529.28
442	428	Casing Joints	5 1/2	20.00	P-110	Yes	39.82	Yes			813.4	17,569.10
443	429	Casing Joints	5 1/2	20.00	P-110	Yes	40.83	Yes			772.5	17,609.93
444	430	Casing Joints	5 1/2	20.00	P-110	Yes	40.82	Yes			731.7	17,650.75
445	431	Casing Joints	5 1/2	20.00	P-110	Yes	40.53	Yes			691.2	17,691.28
446	432	Casing Joints	5 1/2	20.00	P-110	Yes	40.35	Yes			650.8	17,731.63
447	433	Casing Joints	5 1/2	20.00	P-110	Yes	41.06	Yes			609.8	17,772.69
448	434	Casing Joints	5 1/2	20.00	P-110	Yes	40.63	Yes			569.1	17,813.32
449	435	Casing Joints	5 1/2	20.00	P-110	Yes	40.45	Yes			528.7	17,853.77
450	436	Casing Joints	5 1/2	20.00	P-110	Yes	41.06	Yes			487.6	17,894.83
451	437	Casing Joints	5 1/2	20.00	P-110	Yes	40.79	Yes			446.8	17,935.62