

Recorded Mode

Schlumberger

County Name: Weld

Spud Date: 30-Mar-2022

Depth Source: Driller's Depth

Log Measured From: Drill Floor

Drill Floor Elevation: 4902.00(ft)

Ground Level Elevation: 4874.00(ft)

Permanent Datum: Sea Level

Land rig

Job Number: 22CC00029

Print Type: Final Print

Northing: 1394603.48(ft)

Easting: 3186976.68(ft)

NAD83 Colorado State
Coordinate System: Plane, Northern Zone, US

Disclaimer

THE USE OF AND RELIANCE UPON THIS RECORDED-DATA BY THE HEREIN NAMED COMPANY (AND ANY OF ITS AFFILIATES, PARTNERS, REPRESENTATIVES, AGENTS, CONSULTANTS AND EMPLOYEES) IS SUBJECT TO THE TERMS AND CONDITIONS AGREED UPON BETWEEN SCHLUMBERGER AND THE COMPANY, INCLUDING: (a) RESTRICTIONS ON USE OF THE RECORDED-DATA; (b) DISCLAIMERS AND WAIVERS OF WARRANTIES AND REPRESENTATIONS REGARDING COMPANY'S USE AND RELIANCE UPON THE RECORDED-DATA; AND (c) CUSTOMER'S FULL AND SOLE RESPONSIBILITY FOR ANY INFERENCE DRAWN OR DECISION MADE IN CONNECTION WITH THE USE OF THIS RECORDED-DATA.

Operational Run Summary

Notes

Run 1 (Bit Size: 8.5 in)

DateTime Log Started	30-Mar-2022 07:35:20	DateTime Log Finished	30-Mar-2022 18:20:54
Start Depth (ft)	1709	Stop Depth (ft)	2660
Mud Type	Oil Based Mud	Mud Density (lbm/gal)	10
Potassium (%)	0	Barite	Yes
GR Sensor Offset (ft)	25.6	Calibration Coefficient	0
DNI Sensor Offset (ft)	29.24		

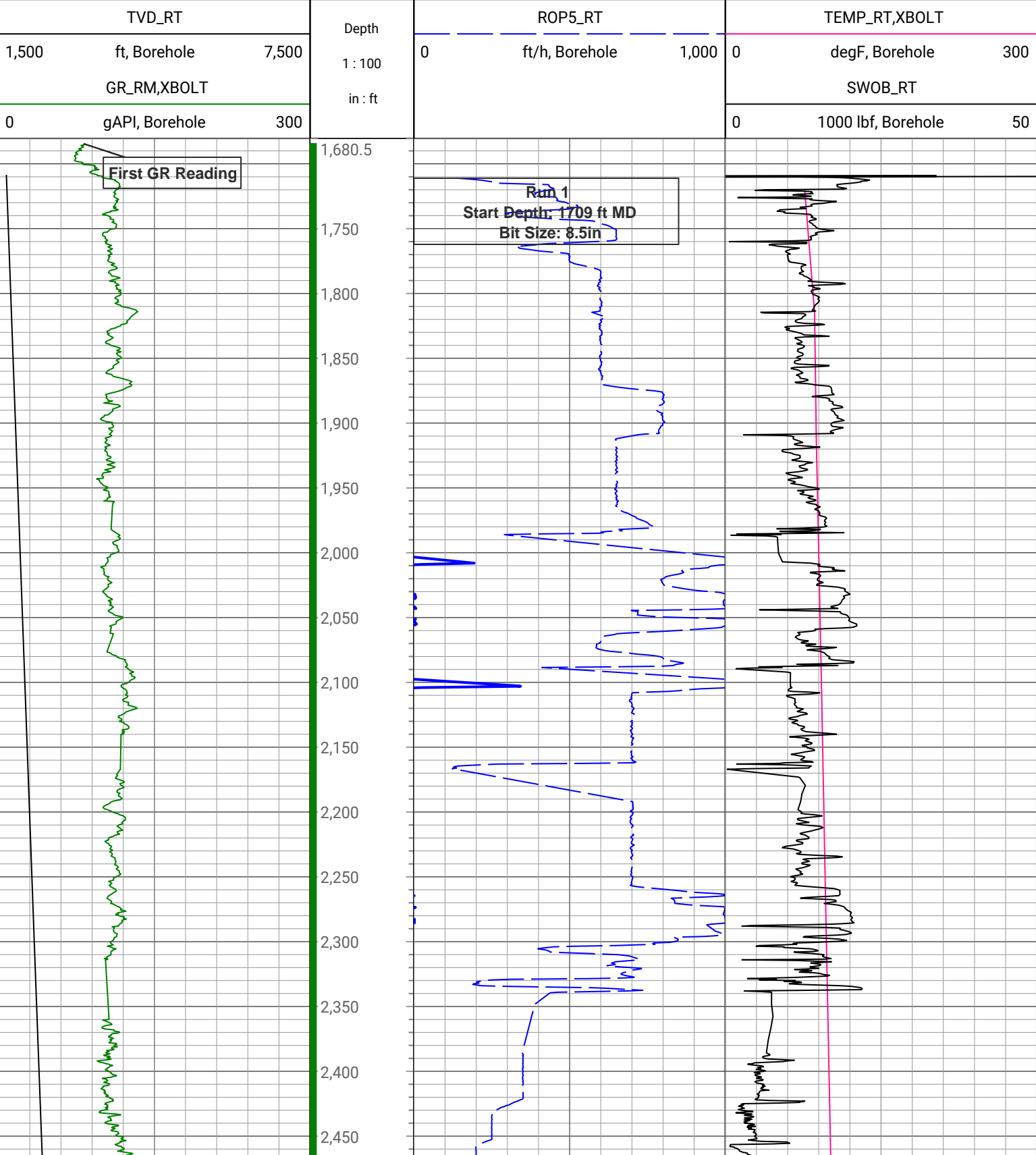
Run 2 (Bit Size: 8.5 in)

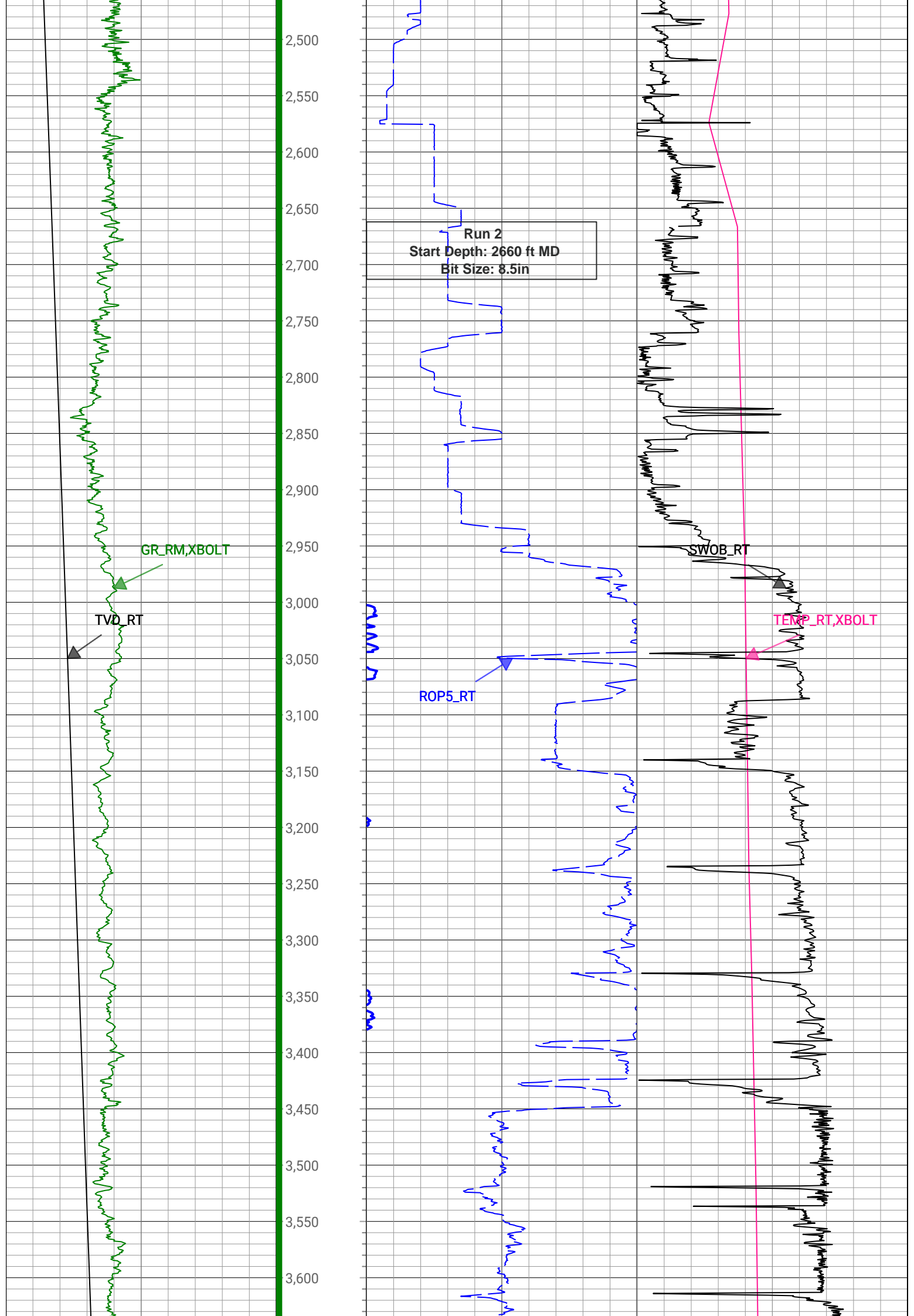
DateTime Log Started	30-Mar-2022 18:20:54	DateTime Log Finished	31-Mar-2022 14:40:09
Start Depth (ft)	2660	Stop Depth (ft)	6362
Mud Type	Oil Based Mud	Mud Density (lbm/gal)	10
Potassium (%)	0	Barite	Yes
GR Sensor Offset (ft)	25.55	Calibration Coefficient	0

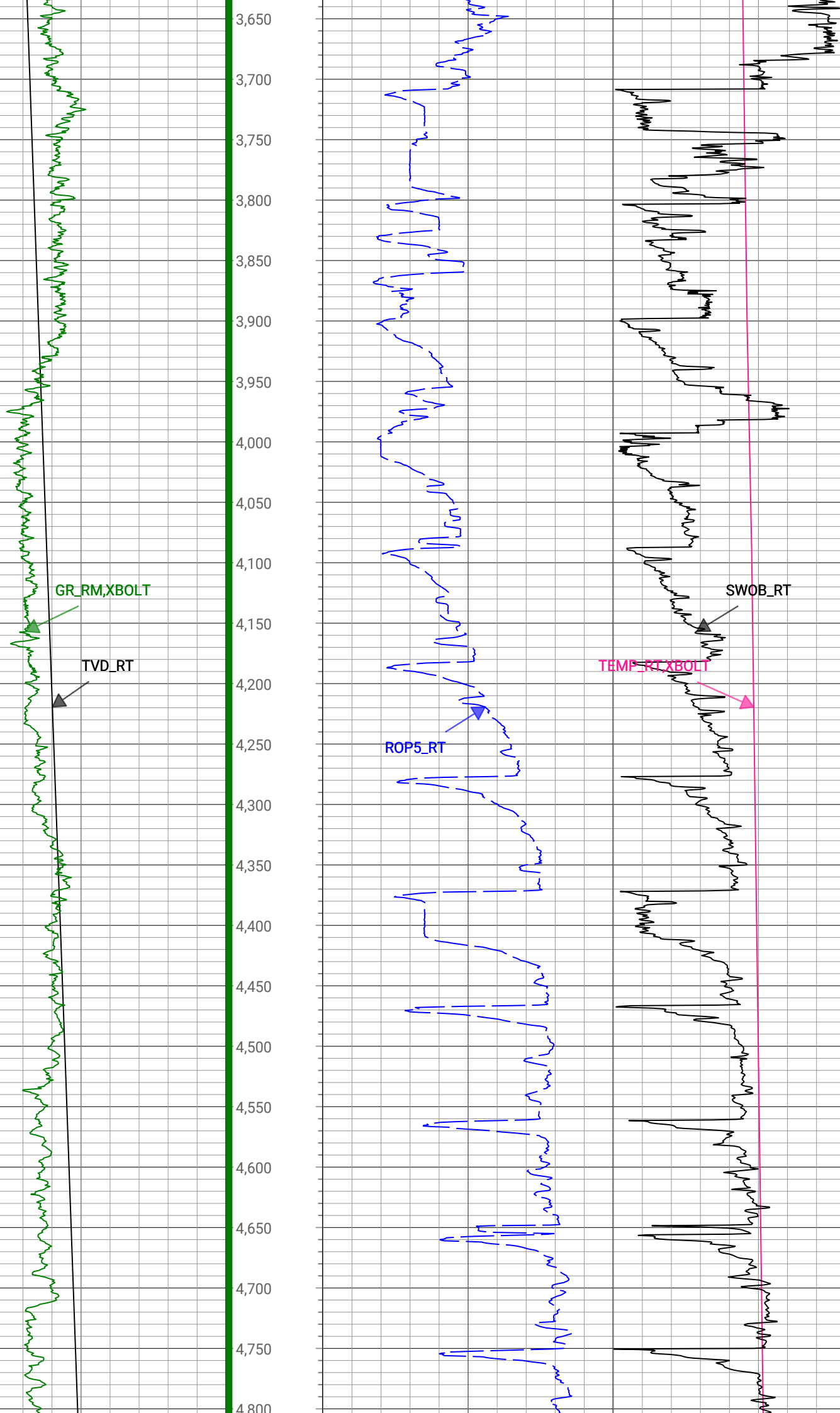
DNI Sensor Offset (ft)	29.19		
Run 3 (Bit Size: 8.5 in)			
DateTime Log Started	31-Mar-2022 14:40:10	DateTime Log Finished	03-Apr-2022 15:12:42
Start Depth (ft)	6362	Stop Depth (ft)	18395
Mud Type	Oil Based Mud	Mud Density (lbm/gal)	10
Potassium (%)	0	Barite	Yes
GR Sensor Offset (ft)	25.55	Calibration Coefficient	0
DNI Sensor Offset (ft)	29.19		

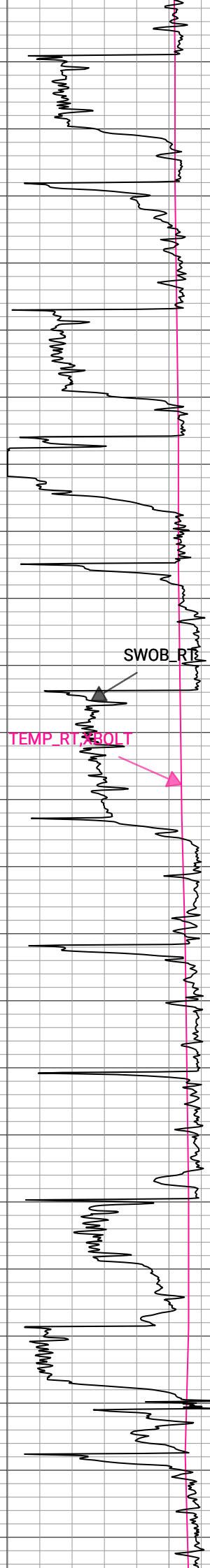
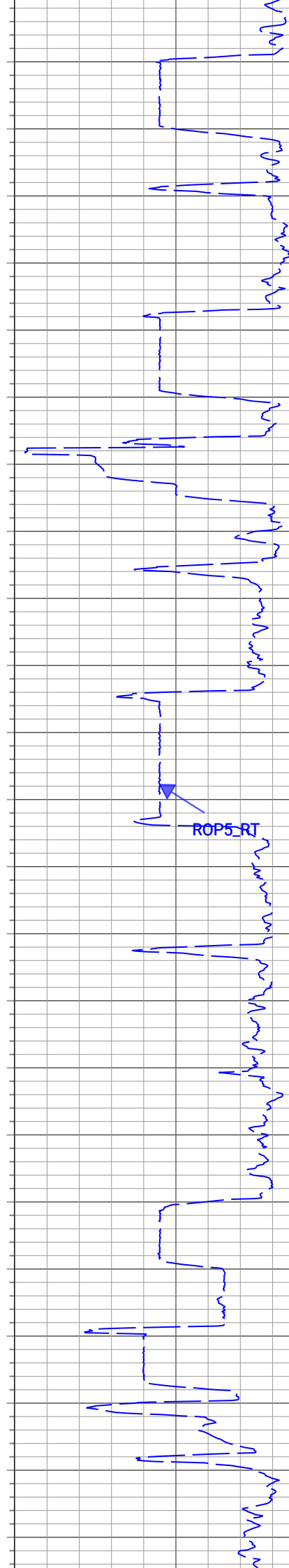
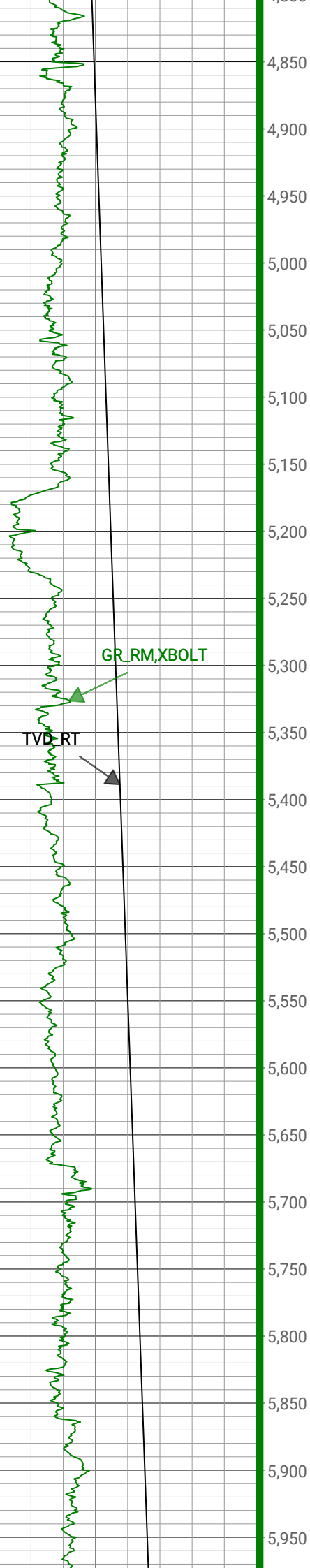
Log

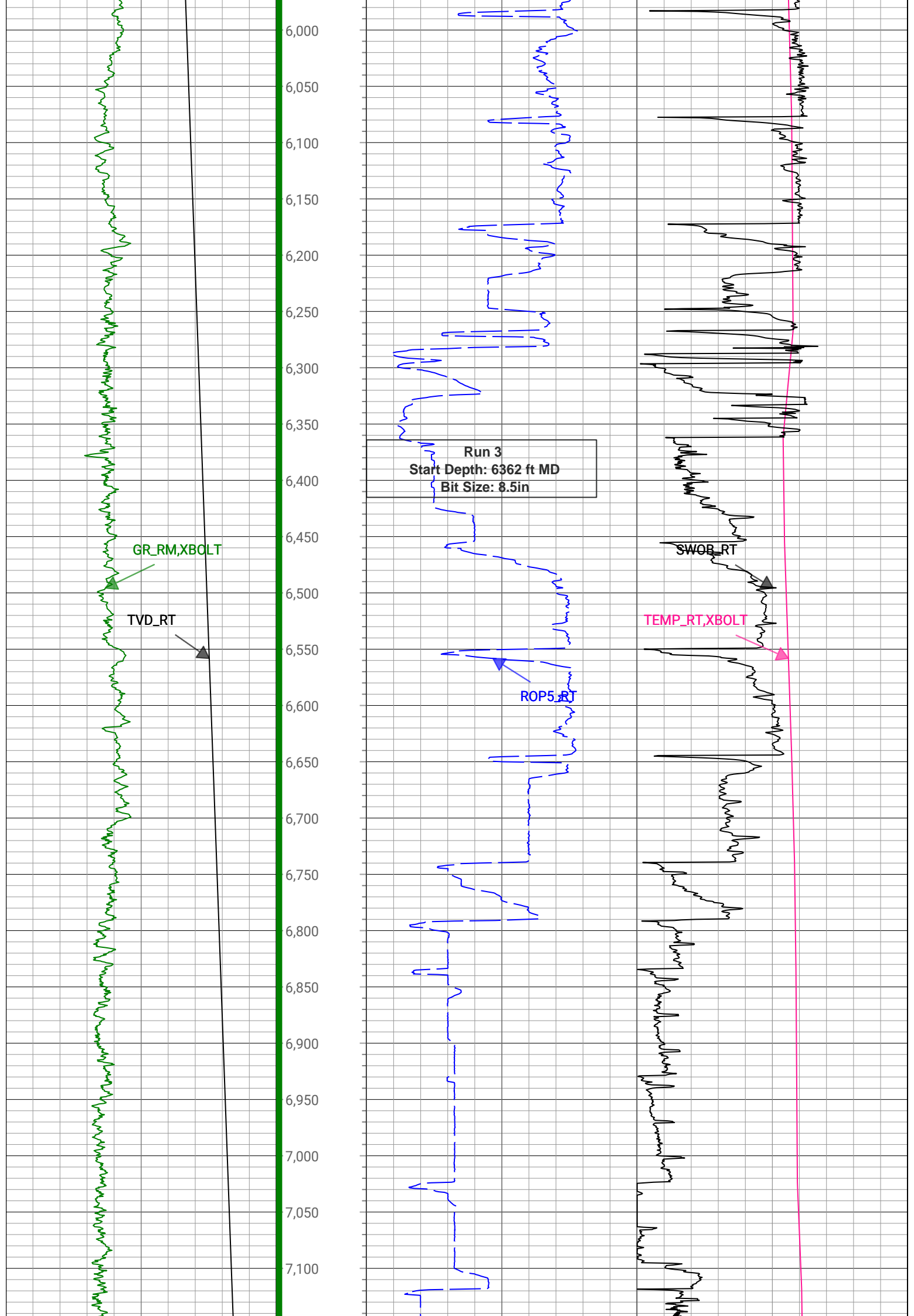
Description: Xbolt GAMMA RAY Format: XBOLT_PDC_Bost Farm Index Scale: 1in/100ft Index Unit: ft Index Type: Measured Depth
Creation Date: 03-Apr-2022

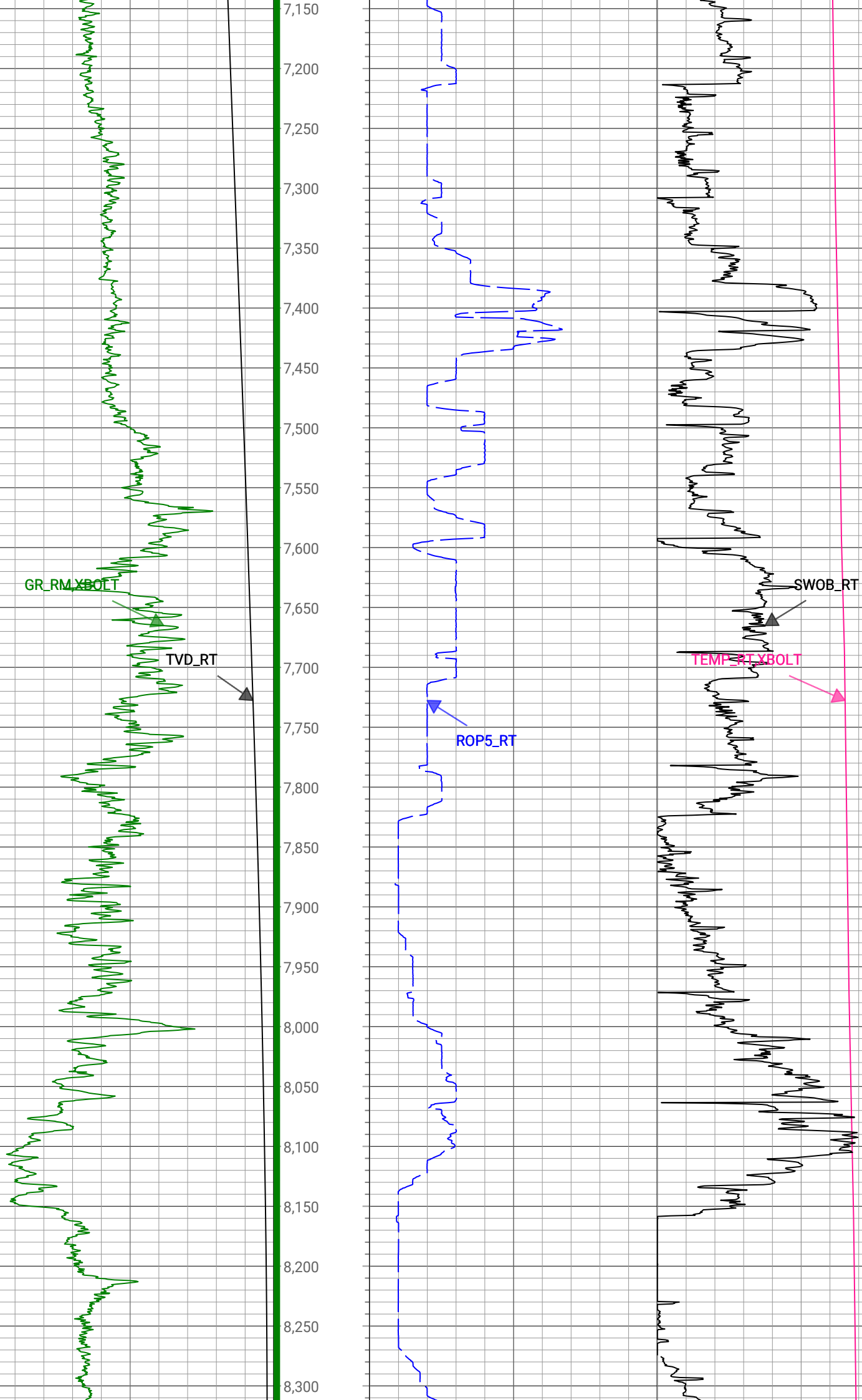


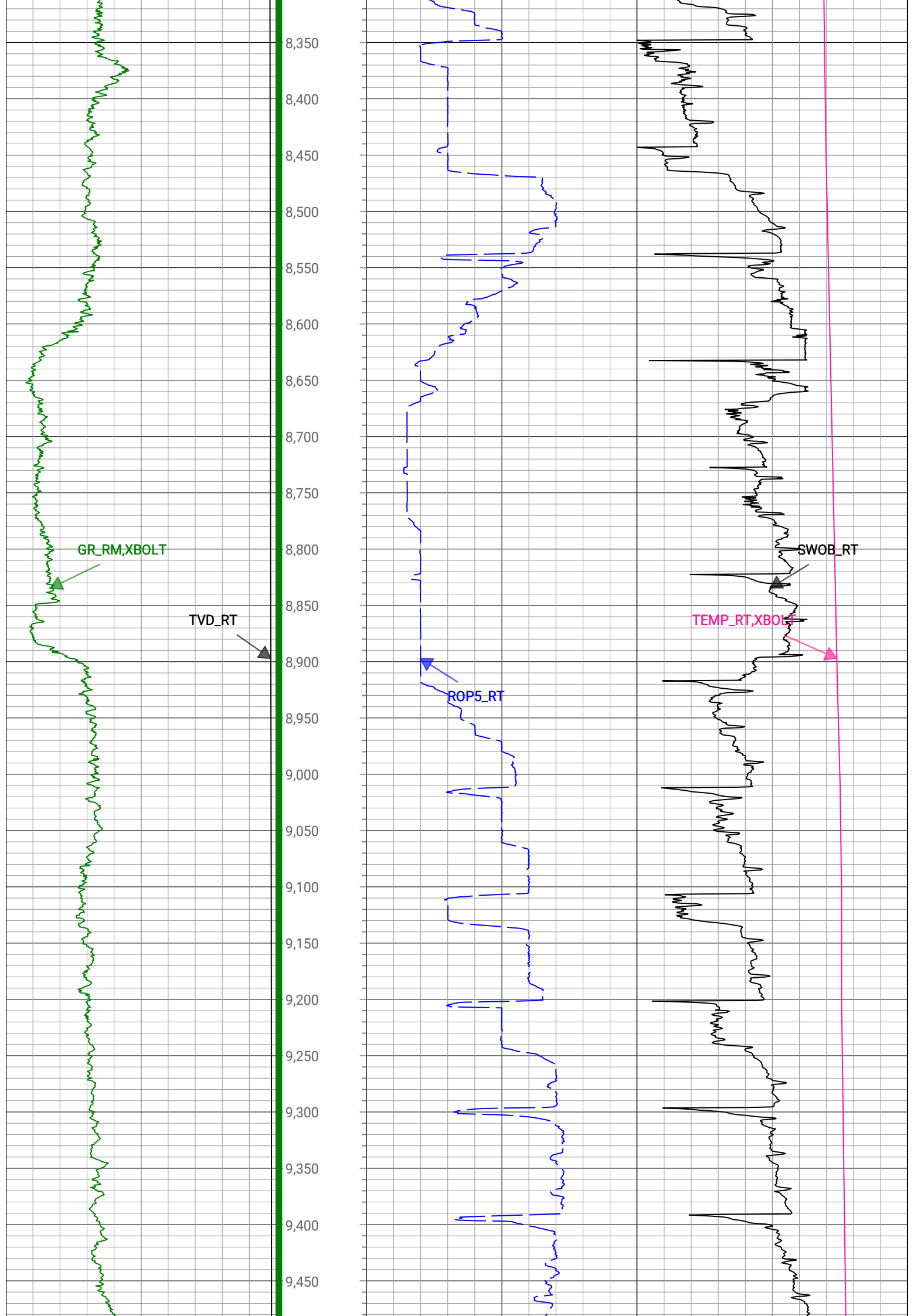


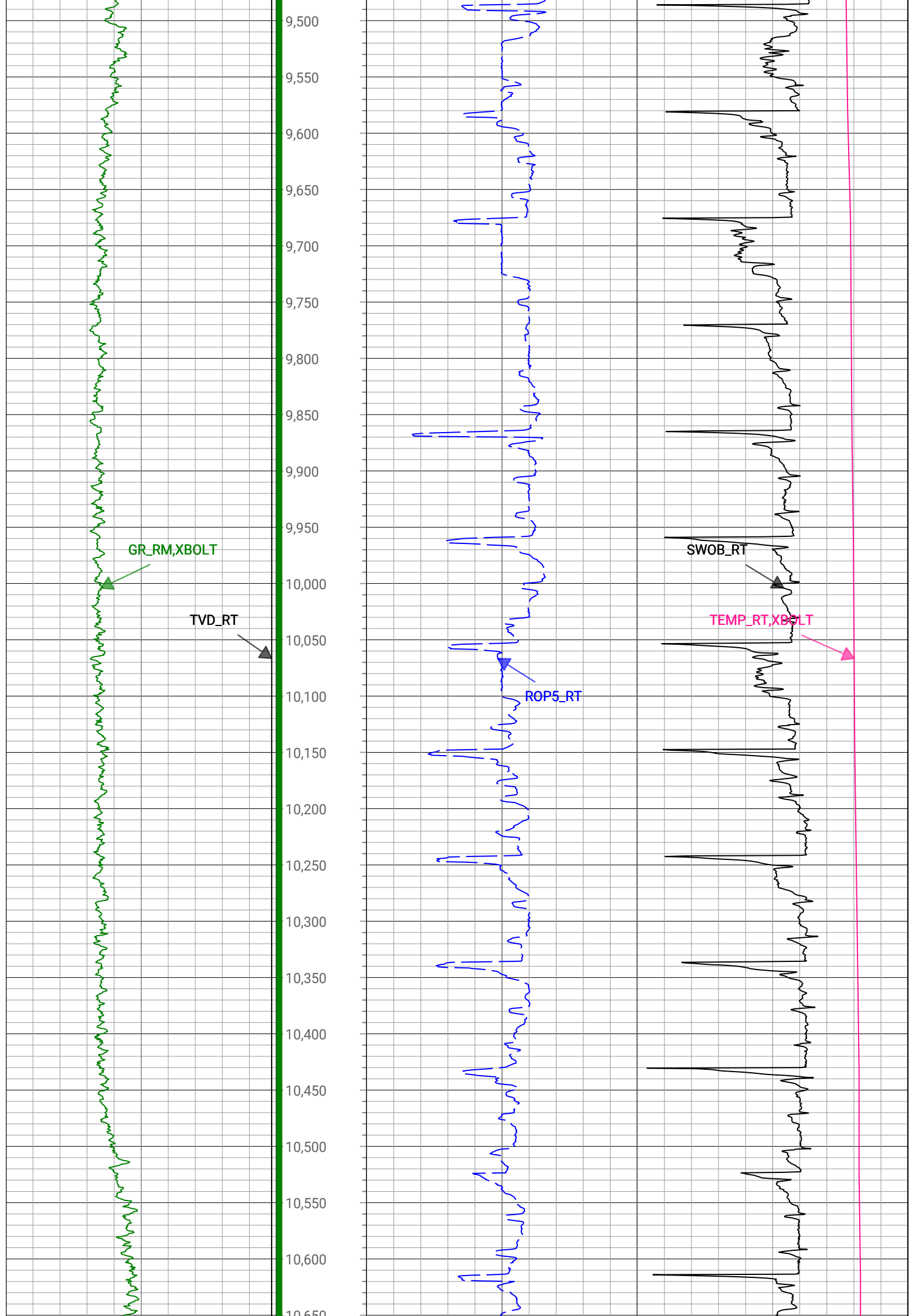


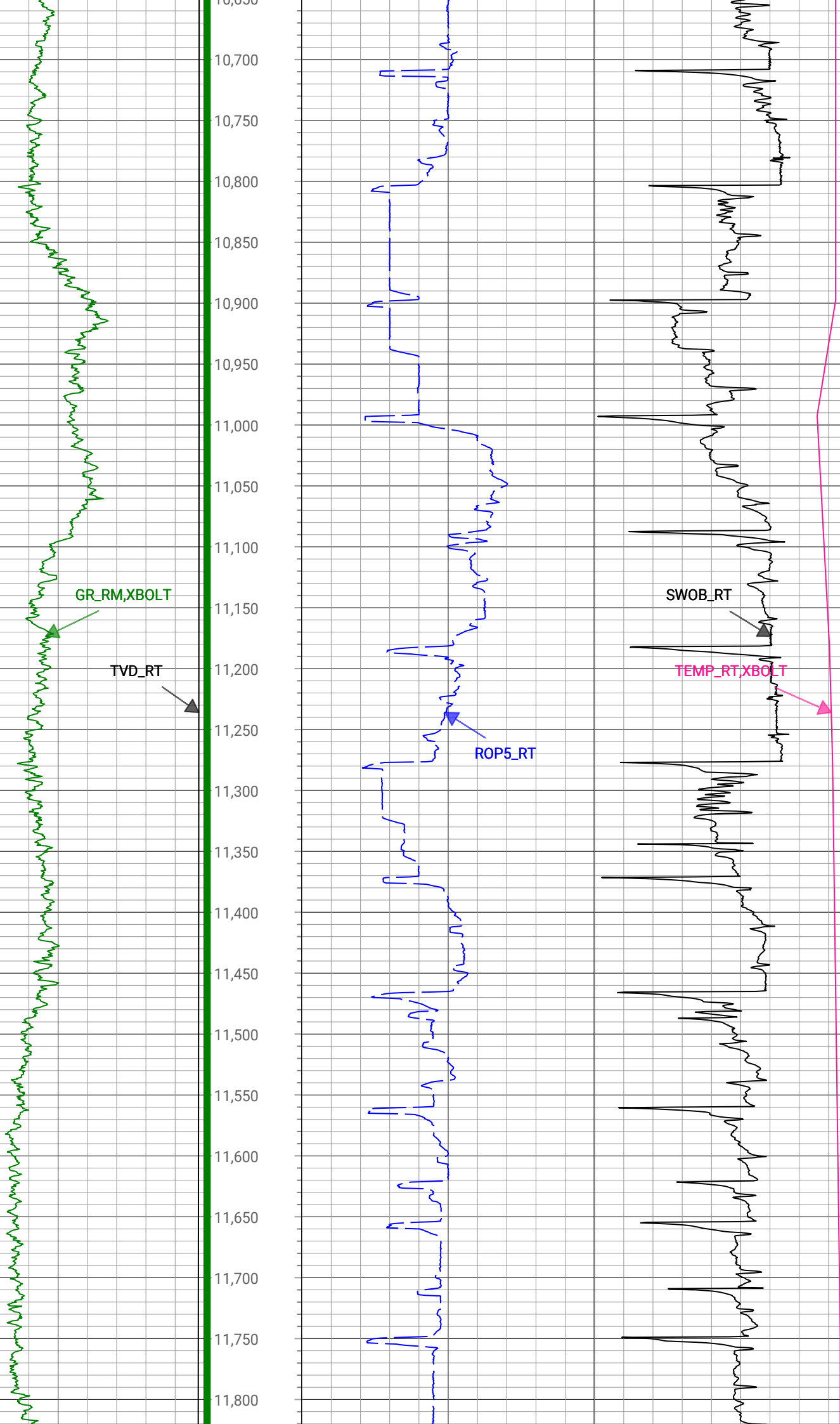


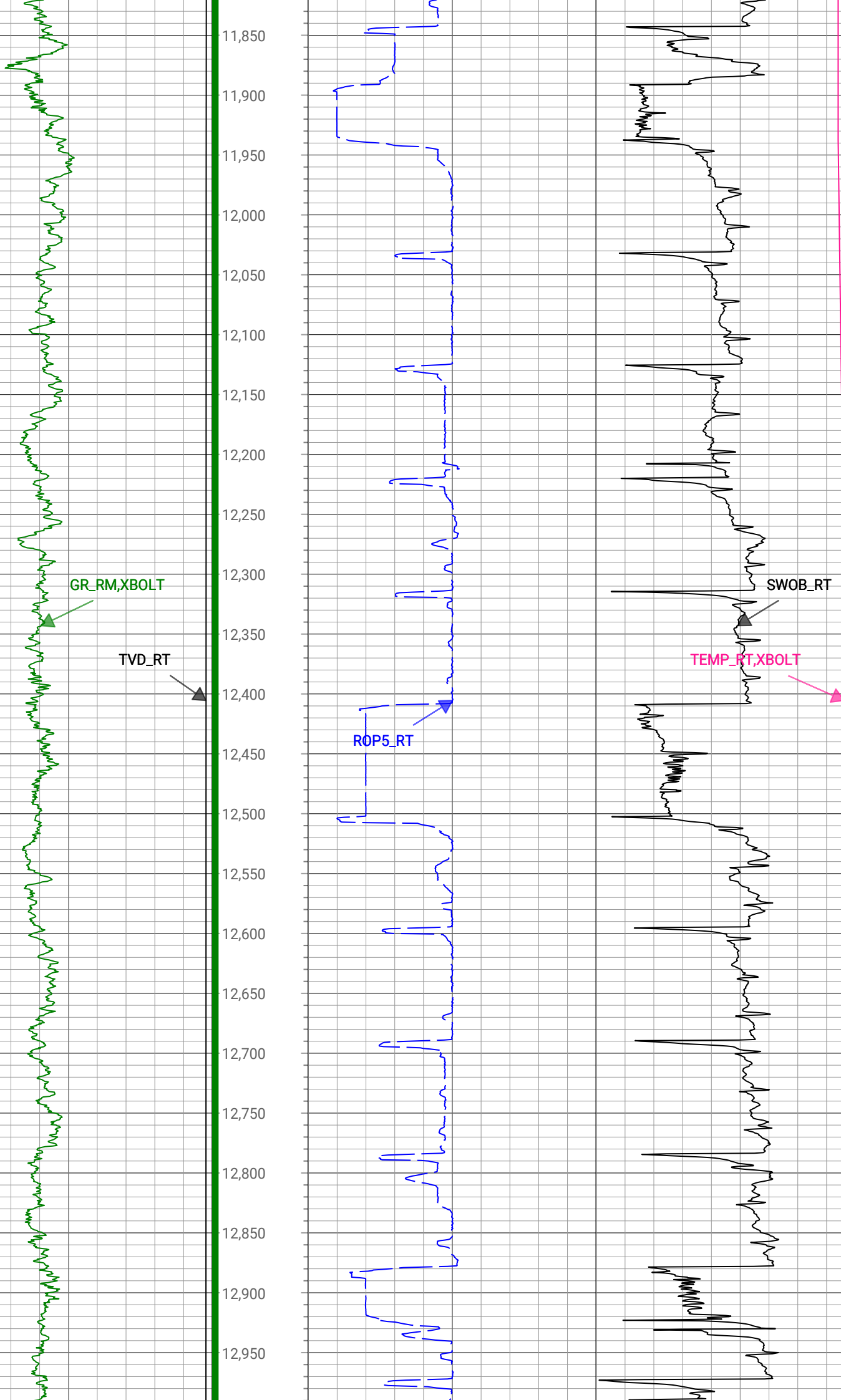


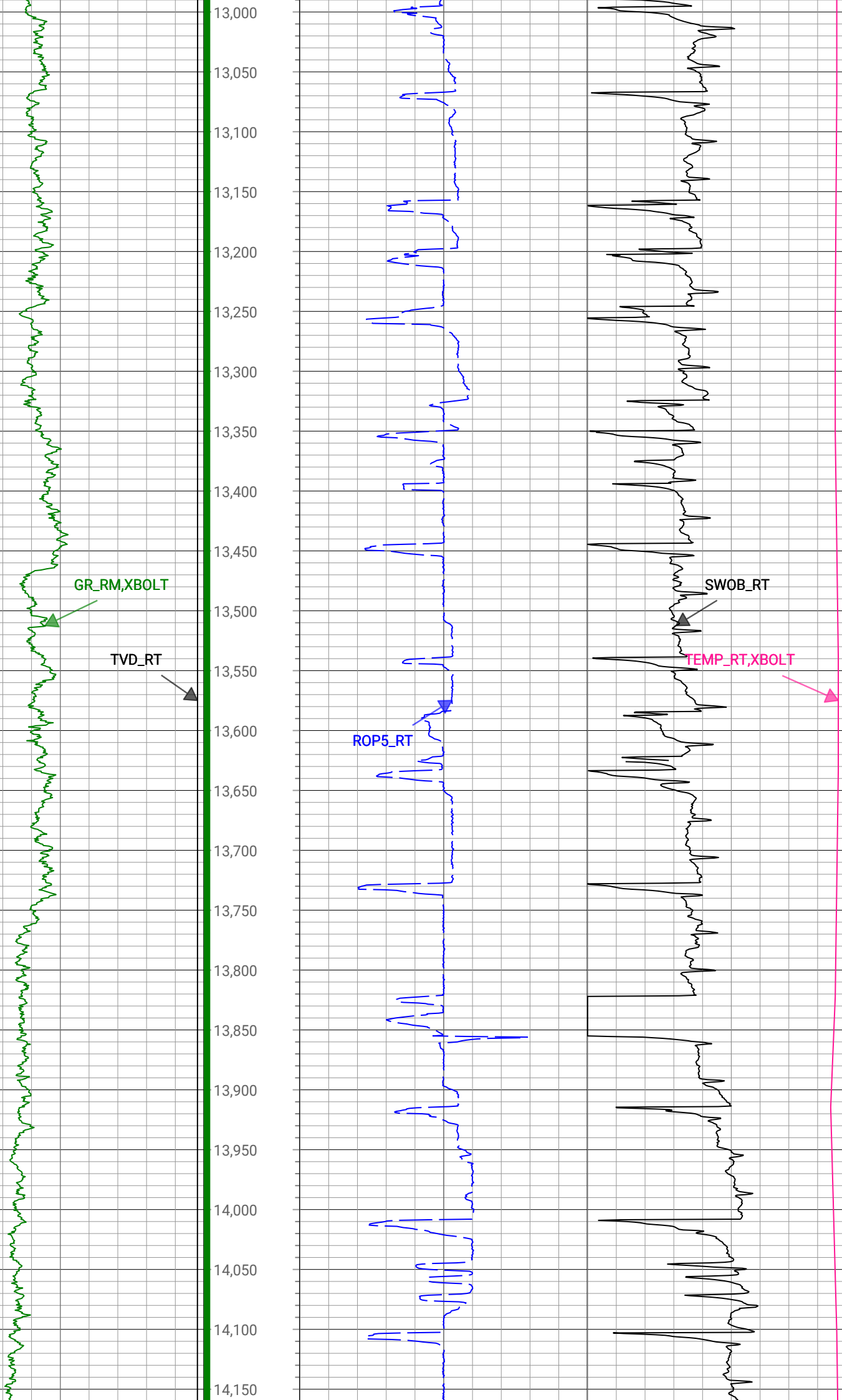


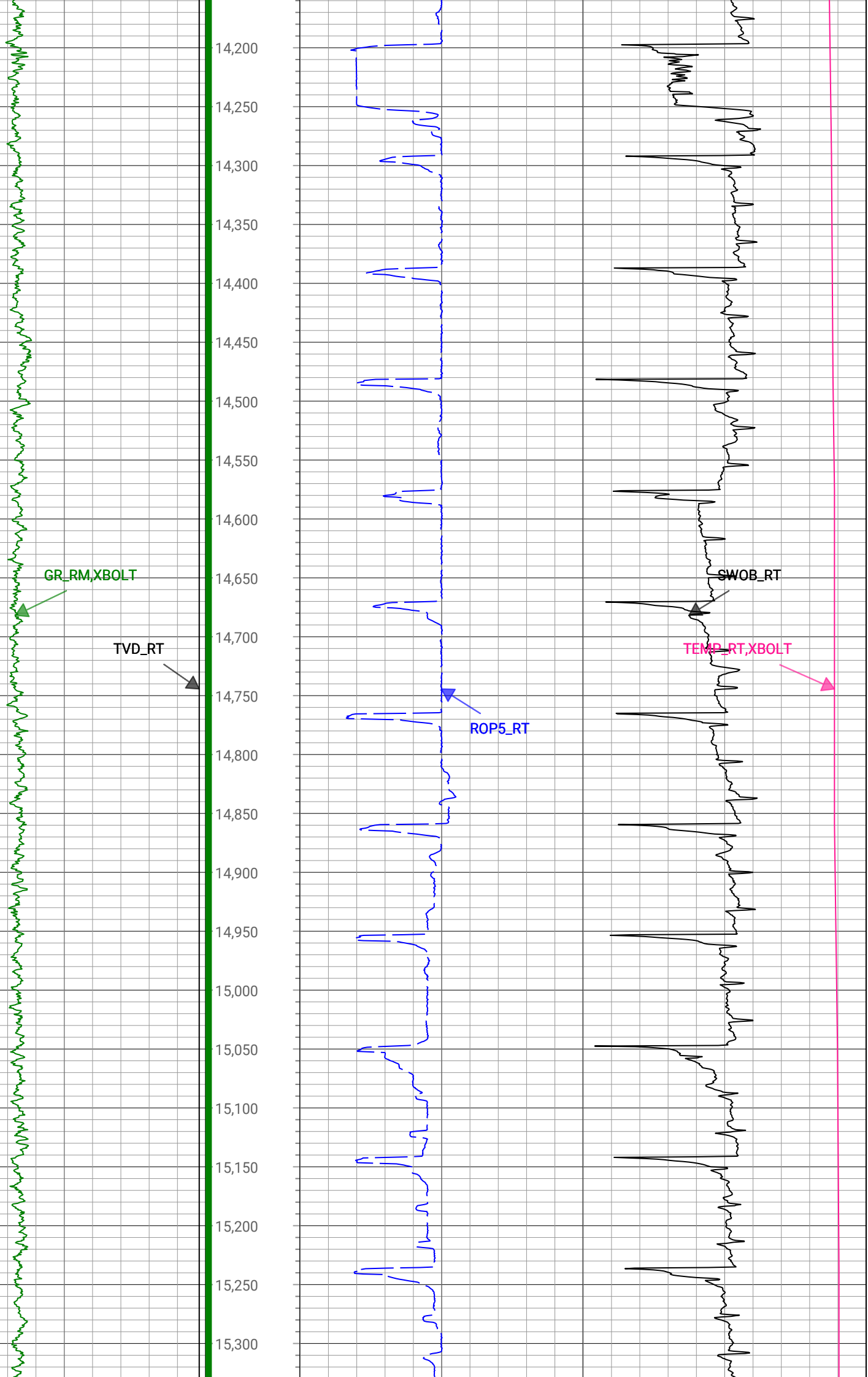


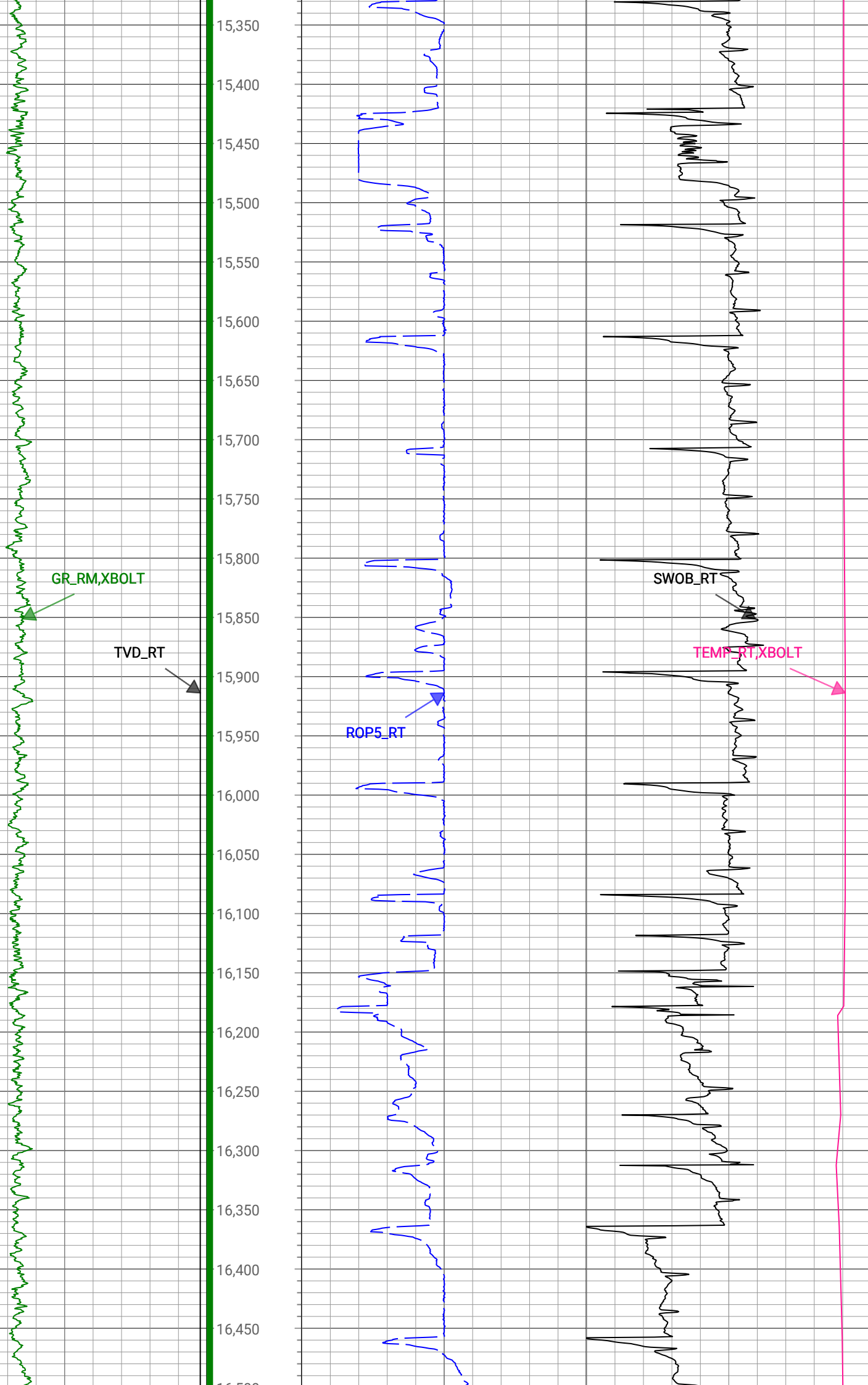


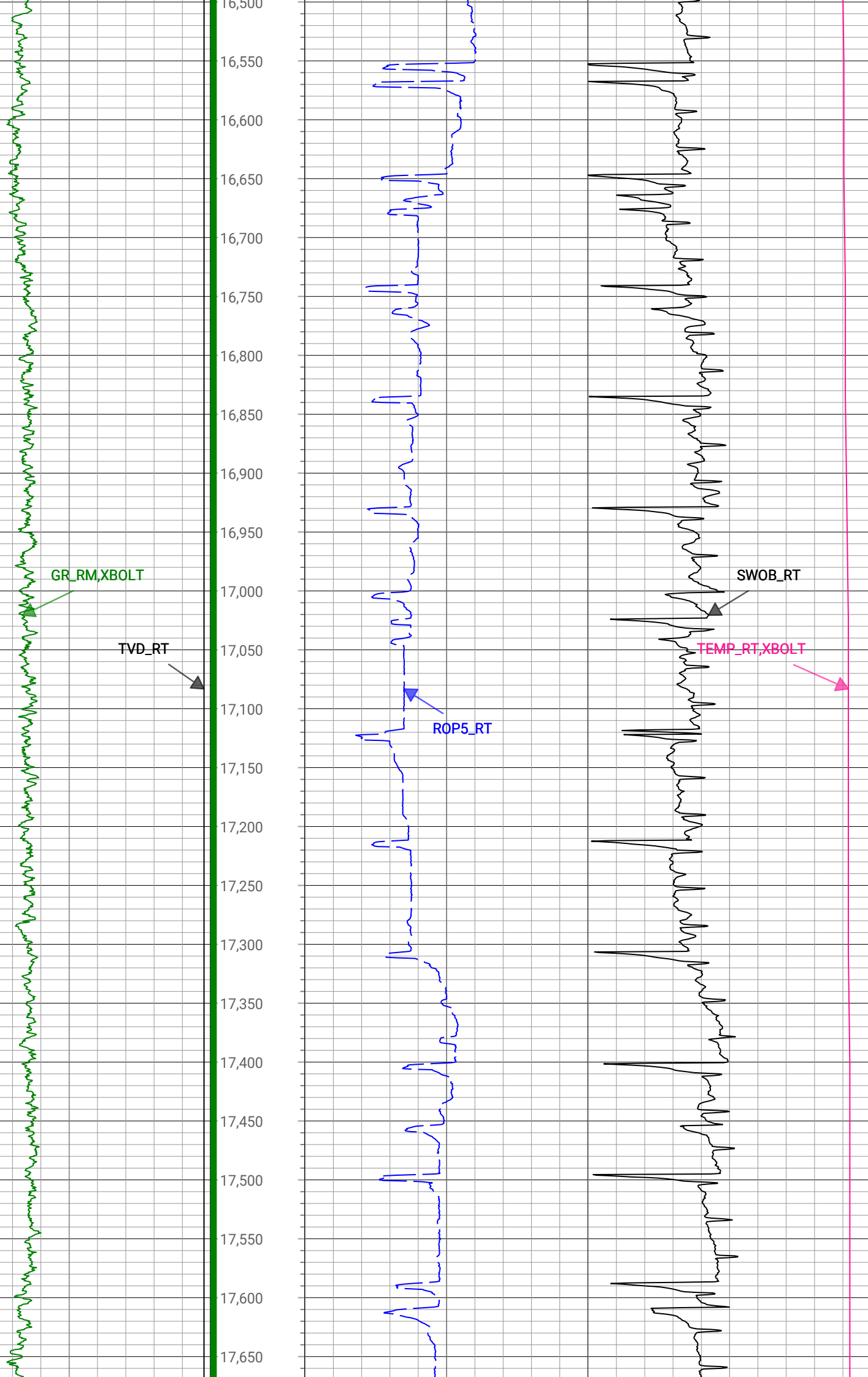


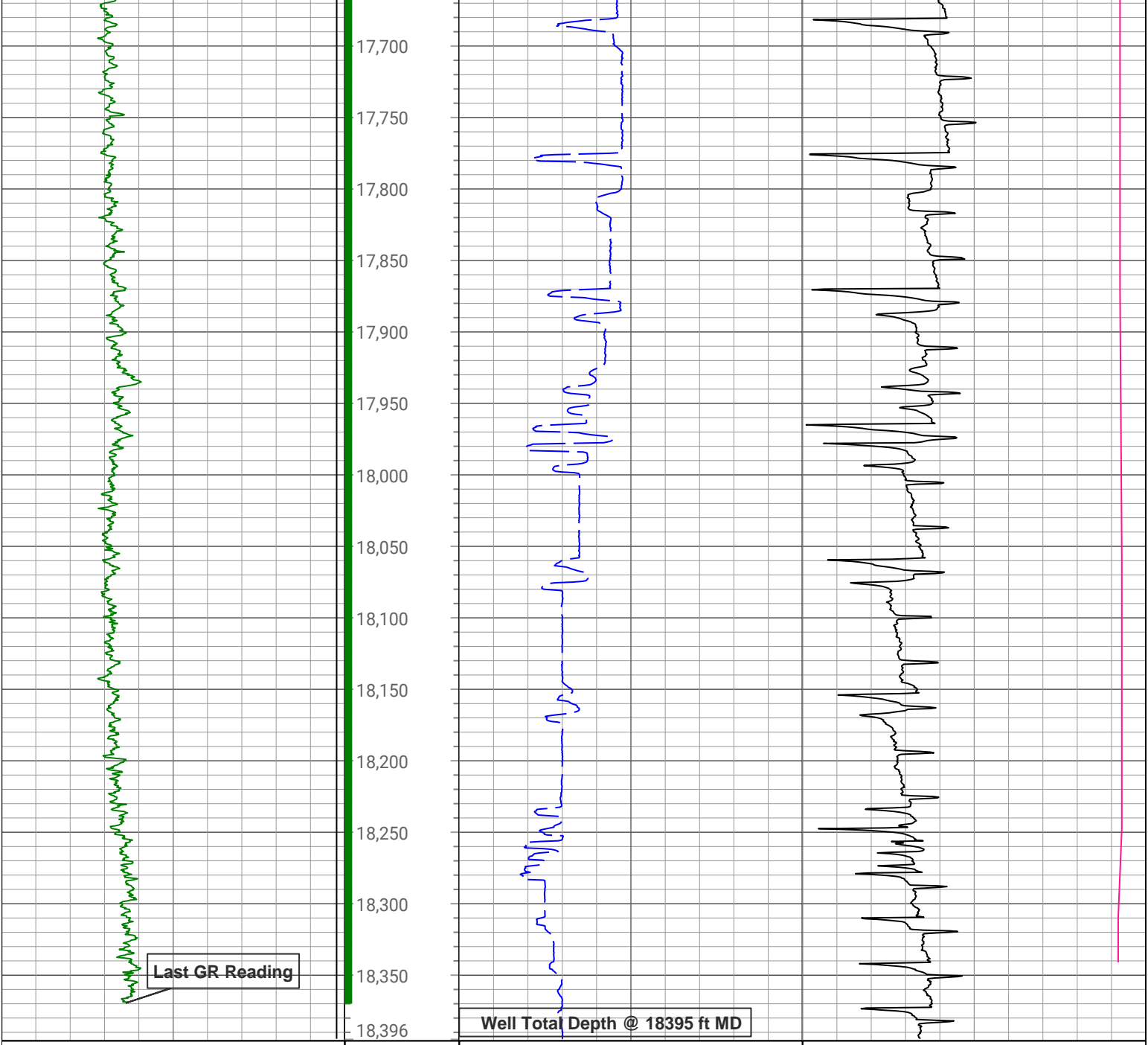












1,500	TVD_RT	7,500	Depth (ft)	0	ROP5_RT	1,000	0	TEMP_RT,XBOLT	300		
ft, Borehole				ft/h, Borehole			degF, Borehole				
0	GR_RM,XBOLT	300					0	SWOB_RT	50		
gAPI, Borehole							1000 lbf, Borehole				
Description: Xbolt GAMMA RAY				Format: XBOLT_PDC_Bost Farm		Index Scale: 1in/100ft		Index Unit: ft		Index Type: Measured Depth	
Creation Date: 03-Apr-2022											

Survey Record

Survey Calculation					
North Reference:		True North			
Tie In Point					
Measured Depth:	0(ft)	Inclination:	0(deg)	Azimuth:	0(deg)
True Vertical Depth:	0(ft)	North Displacement:	0(ft)	East Displacement:	0(ft)

D&I Inits - Run - 1			
Geomagnetic Model:	HDGM 2022	Geomagnetic Date:	28-Mar-2022 00:00:00
Location B:	51959(nT)	Location G:	999.024(mgn)
Magnetic Dip:	66.5(deg)	Magnetic Dec:	7.365(deg)
Total Correction:	7.365		


3489	27.75	220.92	3256.41	-366.97	-934.37	-639.36	1.08	1132.18	214.38	Manual
3584	27.03	221.43	3340.76	-385.92	-967.27	-668.13	0.8	1175.59	214.63	Manual
3679	27.54	221.75	3425.19	-405.09	-999.84	-697.04	0.56	1218.83	214.88	Manual
3773	28	218.93	3508.37	-423.5	-1033.22	-725.38	1.48	1262.42	215.07	Manual
3868	27.53	218.27	3592.43	-440.89	-1067.81	-752.99	0.59	1306.6	215.19	Manual
3963	25.36	219.07	3677.49	-457.54	-1100.84	-779.41	2.31	1348.83	215.3	Manual
4057	25.27	216.92	3762.46	-472.94	-1132.51	-804.15	0.98	1388.97	215.38	Manual
4152	25.84	218.21	3848.17	-488.36	-1164.99	-829.14	0.84	1429.92	215.44	Manual
4246	24.99	217.54	3933.07	-503.74	-1196.83	-853.91	0.95	1470.23	215.51	Manual
4341	24.38	216.69	4019.39	-518.37	-1228.47	-877.85	0.74	1509.88	215.55	Manual
4436	24.69	216.34	4105.81	-532.54	-1260.17	-901.32	0.36	1549.33	215.57	Manual
4530	27.29	217.27	4190.3	-547.54	-1293.14	-926.01	2.8	1590.51	215.61	Manual
4625	27.54	217.61	4274.63	-563.9	-1327.87	-952.6	0.31	1634.22	215.66	Manual
4720	27.54	218.52	4358.86	-580.78	-1362.45	-979.68	0.44	1678.11	215.72	Manual
4815	27.24	218.47	4443.21	-597.87	-1396.66	-1006.89	0.32	1721.76	215.79	Manual
4909	27.53	216.82	4526.68	-614.19	-1430.89	-1033.29	0.86	1764.98	215.83	Manual
5004	27.35	216.07	4610.99	-629.86	-1466.11	-1059.3	0.41	1808.75	215.85	Manual
5099	27.13	216.64	4695.46	-645.36	-1501.13	-1085.07	0.36	1852.23	215.86	Manual
5194	26.79	216.89	4780.13	-661	-1535.63	-1110.85	0.38	1895.3	215.88	Manual
5288	25.33	216.91	4864.57	-676.09	-1568.65	-1135.64	1.55	1936.58	215.9	Manual
5383	25.72	217.31	4950.3	-691.18	-1601.3	-1160.34	0.45	1977.51	215.93	Manual
5478	24.54	212.83	5036.32	-704.74	-1634.27	-1183.54	2.36	2017.82	215.91	Manual
5572	24.85	212.55	5121.72	-716.37	-1667.32	-1204.75	0.35	2057.03	215.85	Manual
5667	25.51	211.26	5207.69	-727.8	-1701.64	-1226.1	0.9	2097.36	215.77	Manual
5762	24.5	211.82	5293.79	-738.91	-1735.86	-1247.1	1.09	2137.4	215.69	Manual
5857	24.87	217.09	5380.12	-751.82	-1768.54	-1269.54	2.35	2177.03	215.67	Manual
5951	25.15	215.73	5465.3	-766.02	-1800.52	-1293.13	0.68	2216.77	215.69	Manual
6046	26.18	218.05	5550.93	-781.05	-1833.42	-1317.83	1.51	2257.9	215.71	Manual
6235	26.55	218.76	5720.27	-813.76	-1899.18	-1369.97	0.26	2341.74	215.8	Manual
6330	26.39	217.51	5805.31	-830.08	-1932.49	-1396.12	0.61	2384.04	215.85	Manual
6425	25.85	214.04	5890.62	-844.6	-1966.4	-1420.57	1.71	2425.85	215.85	Manual
6520	25.35	213.46	5976.29	-857.48	-2000.53	-1443.38	0.59	2466.87	215.81	Manual
6614	25.1	213.85	6061.33	-869.98	-2033.87	-1465.58	0.32	2506.9	215.78	Manual
6709	24.85	215.46	6147.44	-883.16	-2066.87	-1488.38	0.76	2547	215.76	Manual
6804	25.45	214.53	6233.44	-896.65	-2099.94	-1511.53	0.76	2587.37	215.75	Manual
6898	25.53	215.56	6318.29	-910.2	-2133.06	-1534.76	0.48	2627.82	215.74	Manual
6993	25.62	215.66	6403.98	-924.32	-2166.4	-1558.64	0.11	2668.83	215.73	Manual
7088	24.92	215.25	6489.89	-938.18	-2199.44	-1582.17	0.76	2709.39	215.73	Manual
7182	21.66	201.19	6576.29	-946.62	-2231.82	-1599.89	6.83	2746.02	215.63	Manual
7277	19.83	181.52	6665.23	-944.48	-2264.31	-1606.66	7.55	2776.41	215.36	Manual
7371	23.51	161.32	6752.69	-930.09	-2298.07	-1601.07	8.79	2800.81	214.86	Manual
7466	25.12	153.61	6839.29	-905.99	-2334.1	-1586.03	3.74	2821.97	214.2	Manual
7561	29.8	143.6	6923.6	-873.93	-2371.2	-1563.04	6.9	2840.01	213.39	Manual
7655	33.78	132.26	7003.56	-832.17	-2407.62	-1529.79	7.62	2852.53	212.43	Manual
7750	36.04	116.95	7081.61	-781.1	-2438.11	-1485.24	9.5	2854.88	211.35	Manual
7845	42.62	112.82	7155.07	-721.74	-2463.28	-1430.61	7.45	2848.58	210.15	Manual
7939	51.31	105.62	7219.2	-653.31	-2485.56	-1365.78	10.8	2836.08	208.79	Manual
8034	59.95	100.42	7272.8	-575.1	-2503.02	-1289.45	10.15	2815.64	207.26	Manual
8129	66.45	98.84	7315.62	-490.79	-2517.17	-1205.9	7	2791.11	205.6	Manual
8223	76.59	96.44	7345.38	-402.6	-2528.95	-1117.65	11.05	2764.91	203.84	Manual

8318	87.94	94.53	7358.14	-310.05	-2537.91	-1024.1	12.11	2736.75	201.98	Manual
8413	88.4	93.38	7361.18	-217.01	-2544.46	-929.38	1.3	2708.88	200.07	Manual
8507	88.53	89.19	7363.7	-125.93	-2546.57	-835.46	4.46	2680.11	198.16	Manual
8602	87.99	92	7366.58	-34.17	-2547.55	-740.52	3.01	2653	196.21	Manual
8697	89.68	87.6	7368.51	57.26	-2547.22	-645.56	4.96	2627.75	194.22	Manual
8792	87.37	88.48	7370.96	147.86	-2543.97	-550.66	2.6	2602.89	192.21	Manual
8886	86.88	88.43	7375.67	237.63	-2541.44	-456.81	0.52	2582.17	190.19	Manual
8981	87.21	88.12	7380.57	328.26	-2538.58	-361.98	0.48	2564.26	188.12	Manual
9075	87.64	88.51	7384.8	417.99	-2535.82	-268.12	0.62	2549.96	186.04	Manual
9170	88.97	88.15	7387.61	508.73	-2533.06	-173.2	1.45	2538.97	183.91	Manual
9265	88.99	88.67	7389.3	599.53	-2530.42	-78.25	0.55	2531.63	181.77	Manual
9359	89.36	90.08	7390.65	689.84	-2529.39	15.73	1.55	2529.44	179.64	Manual
9454	89.01	90.44	7392	781.5	-2529.83	110.72	0.53	2532.25	177.49	Manual
9549	89.04	90.75	7393.62	873.3	-2530.81	205.7	0.33	2539.16	175.35	Manual
9738	90.05	90.62	7395.12	1056.04	-2533.07	394.68	0.54	2563.63	171.14	Manual
9832	90.33	90.46	7394.81	1146.86	-2533.96	488.67	0.34	2580.65	169.08	Manual
9927	90.19	90.91	7394.38	1238.71	-2535.09	583.67	0.5	2601.42	167.03	Manual
10115	90.31	90.14	7393.56	1420.35	-2536.82	771.65	0.41	2651.58	163.08	Manual
10209	90.19	89.39	7393.15	1510.84	-2536.43	865.65	0.81	2680.08	161.16	Manual
10303	90.22	89.09	7392.81	1601.09	-2535.18	959.64	0.32	2710.73	159.27	Manual
10398	90.13	89.63	7392.52	1692.36	-2534.12	1054.64	0.58	2744.82	157.4	Manual
10491	90.19	89.62	7392.26	1781.83	-2533.51	1147.63	0.07	2781.32	155.63	Manual
10585	90.05	89.82	7392.06	1872.3	-2533.05	1241.63	0.26	2821	153.89	Manual
10680	90.15	89.86	7391.9	1963.79	-2532.79	1336.63	0.11	2863.84	152.18	Manual
10774	90.69	89.29	7391.21	2054.19	-2532.09	1430.63	0.84	2908.3	150.53	Manual
10868	89.91	89.84	7390.72	2144.59	-2531.38	1524.62	1.02	2955.05	148.94	Manual
10963	90.58	89.91	7390.31	2236.09	-2531.17	1619.62	0.71	3004.99	147.39	Manual
11058	91.16	87.8	7388.87	2327.11	-2529.27	1714.58	2.3	3055.65	145.87	Manual
11152	91.14	89.82	7386.98	2417.14	-2527.32	1808.54	2.15	3107.76	144.41	Manual
11247	91.15	89.47	7385.08	2508.52	-2526.73	1903.52	0.37	3163.5	143.01	Manual
11341	91.25	89.1	7383.11	2598.77	-2525.56	1997.49	0.41	3220	141.66	Manual
11435	91.21	89.36	7381.09	2689	-2524.3	2091.46	0.28	3278.15	140.36	Manual
11530	91.03	89.6	7379.24	2780.31	-2523.43	2186.44	0.32	3338.9	139.09	Manual
11624	91.17	89.07	7377.43	2870.59	-2522.34	2280.41	0.58	3400.37	137.88	Manual
11719	91.35	89.14	7375.34	2961.72	-2520.86	2375.38	0.2	3463.69	136.7	Manual
11813	91.22	88.97	7373.24	3051.87	-2519.31	2469.34	0.23	3527.69	135.57	Manual
11907	91.1	89.26	7371.33	3142.04	-2517.86	2563.31	0.33	3593.08	134.49	Manual
12001	90.59	88.35	7369.95	3232.08	-2515.9	2657.28	1.11	3659.36	133.43	Manual
12095	90.09	89.99	7369.39	3322.3	-2514.54	2751.27	1.82	3727.25	132.43	Manual
12189	90.29	88.54	7369.08	3412.56	-2513.33	2845.26	1.56	3796.36	131.46	Manual
12284	90.27	88.92	7368.61	3503.54	-2511.23	2940.23	0.4	3866.68	130.5	Manual
12378	90.48	89.17	7368	3593.7	-2509.66	3034.22	0.35	3937.62	129.59	Manual
12472	90.43	89.15	7367.25	3683.91	-2508.28	3128.2	0.06	4009.63	128.72	Manual
12564	90.02	91.56	7366.89	3772.72	-2508.85	3220.19	2.66	4082.15	127.92	Manual
12658	90.25	91.9	7366.67	3864.03	-2511.69	3314.15	0.44	4158.39	127.16	Manual
12753	90.3	91.52	7366.21	3956.3	-2514.52	3409.11	0.4	4236.13	126.41	Manual
12847	90.17	92.03	7365.83	4047.63	-2517.44	3503.06	0.56	4313.8	125.7	Manual
12941	90.29	90.42	7365.45	4138.74	-2519.45	3597.03	1.72	4391.61	125.01	Manual
13036	90.23	89.84	7365.02	4230.35	-2519.66	3692.03	0.61	4469.88	124.31	Manual
13130	90.23	89.63	7364.64	4320.83	-2519.23	3786.03	0.22	4547.59	123.64	Manual

13224	90.27	89.59	7364.23	4411.25	-2518.59	3880.03	0.06	4625.79	122.99	Manual
13318	90.1	89.42	7363.93	4501.62	-2517.77	3974.02	0.26	4704.47	122.36	Manual
13413	90.04	89.95	7363.81	4593.04	-2517.25	4069.02	0.56	4784.71	121.74	Manual
13507	90.07	89.62	7363.72	4683.54	-2516.9	4163.02	0.35	4864.72	121.16	Manual
13602	90.26	89.26	7363.45	4774.84	-2515.97	4258.02	0.43	4945.79	120.58	Manual
13696	90.06	89.79	7363.19	4865.23	-2515.19	4352.01	0.6	5026.55	120.03	Manual
13790	90.23	89.87	7362.95	4955.75	-2514.91	4446.01	0.2	5108.01	119.49	Manual
13885	90.37	89.33	7362.45	5047.12	-2514.25	4541.01	0.59	5190.59	118.97	Manual
13979	90.32	89.26	7361.88	5137.4	-2513.09	4635	0.09	5272.46	118.47	Manual
14073	90.35	89.25	7361.33	5227.66	-2511.87	4728.99	0.03	5354.7	117.98	Manual
14167	90.15	89.73	7360.92	5318.03	-2511.03	4822.98	0.55	5437.51	117.5	Manual
14357	89.93	89.98	7360.79	5501.01	-2510.55	5012.98	0.18	5606.5	116.6	Manual
14451	90.15	89.62	7360.73	5591.52	-2510.22	5106.98	0.45	5690.56	116.18	Manual
14546	89.82	89.74	7360.75	5682.93	-2509.69	5201.98	0.37	5775.74	115.75	Manual
14735	89.99	89.22	7361.06	5864.62	-2507.98	5390.97	0.29	5945.8	114.95	Manual
14829	90.09	89.82	7361	5955	-2507.19	5484.97	0.65	6030.83	114.57	Manual
14922	89.99	89.41	7360.93	6044.46	-2506.57	5577.97	0.45	6115.27	114.2	Manual
15016	90.03	89.57	7360.92	6134.83	-2505.73	5671.96	0.18	6200.79	113.83	Manual
15111	89.93	89.64	7360.95	6226.21	-2505.07	5766.96	0.13	6287.55	113.48	Manual
15205	89.89	89.72	7361.1	6316.67	-2504.55	5860.96	0.1	6373.66	113.14	Manual
15299	89.97	89.05	7361.21	6406.98	-2503.54	5954.95	0.72	6459.81	112.8	Manual
15393	90.25	89.03	7361.03	6497.15	-2501.97	6048.94	0.3	6545.95	112.47	Manual
15487	89.99	90.19	7360.84	6587.57	-2501.33	6142.93	1.26	6632.67	112.16	Manual
15581	90.09	90.42	7360.77	6678.29	-2501.83	6236.93	0.27	6720.01	111.86	Manual
15675	90.04	89.99	7360.66	6768.98	-2502.16	6330.93	0.46	6807.46	111.57	Manual
15864	90.11	90.09	7360.42	6951.16	-2502.29	6519.93	0.06	6983.62	111	Manual
15958	90.4	89.99	7360	7041.77	-2502.36	6613.93	0.33	7071.48	110.72	Manual
16052	90.06	90.09	7359.62	7132.38	-2502.43	6707.93	0.38	7159.5	110.46	Manual
16146	90.32	89.68	7359.31	7222.93	-2502.24	6801.93	0.52	7247.58	110.2	Manual
16240	90.1	90.62	7358.96	7313.59	-2502.48	6895.93	1.03	7335.95	109.95	Manual
16334	89.96	90.37	7358.91	7404.39	-2503.3	6989.92	0.3	7424.66	109.7	Manual
16428	89.69	89.12	7359.2	7494.87	-2502.88	7083.92	1.36	7513.08	109.46	Manual
16522	90.29	90.62	7359.22	7585.41	-2502.66	7177.92	1.72	7601.7	109.22	Manual
16616	90.01	90.06	7358.97	7676.15	-2503.22	7271.91	0.67	7690.7	109	Manual
16710	90.09	90.22	7358.89	7766.8	-2503.45	7365.91	0.19	7779.71	108.77	Manual
16804	90.12	90.29	7358.72	7857.51	-2503.87	7459.91	0.08	7868.9	108.55	Manual
16898	89.99	90.3	7358.63	7948.23	-2504.35	7553.91	0.14	7958.23	108.34	Manual
16992	90.05	90.26	7358.6	8038.95	-2504.81	7647.91	0.08	8047.65	108.13	Manual
17086	89.95	90.57	7358.6	8129.72	-2505.49	7741.91	0.35	8137.24	107.93	Manual
17180	89.99	90.19	7358.64	8220.48	-2506.12	7835.91	0.41	8226.91	107.74	Manual
17275	90.09	89.92	7358.58	8312.06	-2506.21	7930.91	0.3	8317.47	107.54	Manual
17369	89.96	90.33	7358.54	8402.71	-2506.41	8024.9	0.46	8407.21	107.35	Manual
17464	90.13	90.09	7358.46	8494.36	-2506.76	8119.9	0.31	8498.04	107.16	Manual
17557	90.04	89.89	7358.32	8583.99	-2506.75	8212.9	0.24	8586.94	106.97	Manual
17652	89.95	90.49	7358.33	8675.63	-2507.06	8307.9	0.64	8677.94	106.79	Manual
17840	90.12	89.97	7358.22	8857.02	-2507.82	8495.9	0.29	8858.3	106.45	Manual
17935	90.29	90.81	7357.88	8948.74	-2508.46	8590.9	0.9	8949.63	106.28	Manual
18029	90.15	89.67	7357.52	9039.44	-2508.86	8684.89	1.22	9040.01	106.11	Manual
18123	90.2	89.97	7357.23	9129.95	-2508.56	8778.89	0.32	9130.27	105.95	Manual
18218	89.95	90.13	7357.11	9221.53	-2508.64	8873.89	0.31	9221.67	105.79	Manual

18215	90.08	90.18	7357.11	9221.88	-2509.04	8998.89	0.13	9342.13	105.58	Manual
18343	90.08	90.23	7357.07	9342.11	-2509.04	8998.89	0.13	9342.13	105.58	Manual
18364	90.09	90.08	7357.04	9362.36	-2509.09	9019.89	0.72	9362.37	105.55	Manual
18395	90.09	90.08	7356.99	9392.25	-2509.14	9050.89	0	9392.25	105.49	Manual

Company:	PDC Energy Inc
Well:	Bost Farm 38C-8-L
Field Name:	Wattenberg
Country Name:	United States
State Name:	Colorado
County Name:	Weld



Xbolt GAMMA RAY

1in/100ft Measured Depth

Final Print

Recorded Mode