

PDC Energy Inc. DJ Basin

Bost Farm 16N-8B-L
 Bost Farms 5-7 Pad SEC.7-T5N-R66W
 North American Datum 1983 , US State Plane 1983, Colorado Northern Zone
 Ground Elevation: 4874.0
 +N/-S +E/-W Northing Easting Latitude Longitude Slot
 0.0 0.0 1394603.89 3186996.61 40.414646 -104.828431
 Patterson 272 - RKB 28.5WELL @ 4902 ft (Patterson 272 - RKB 28')



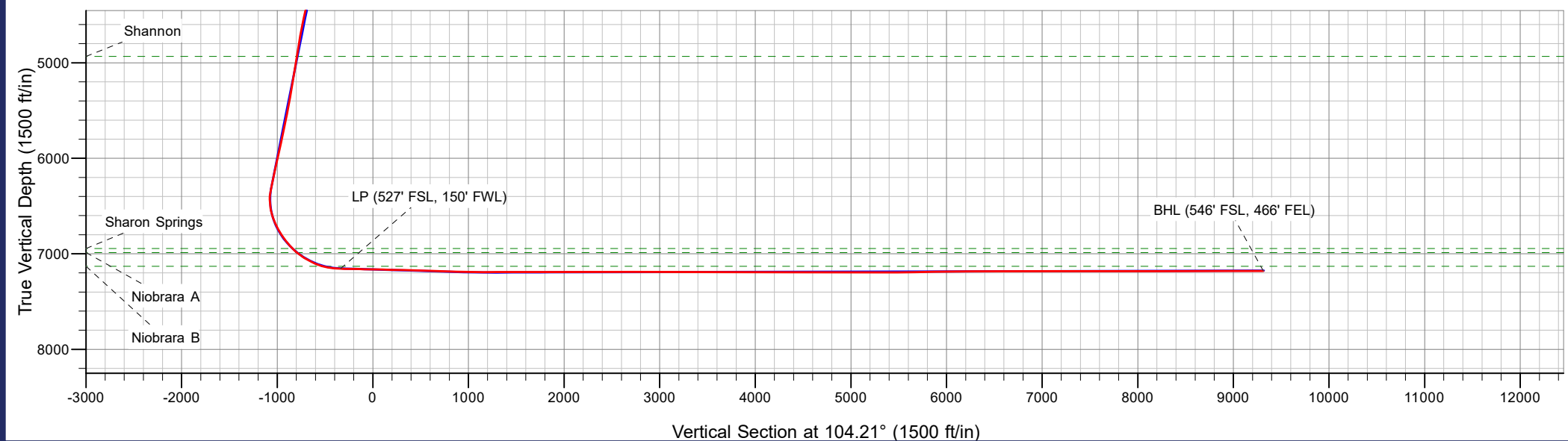
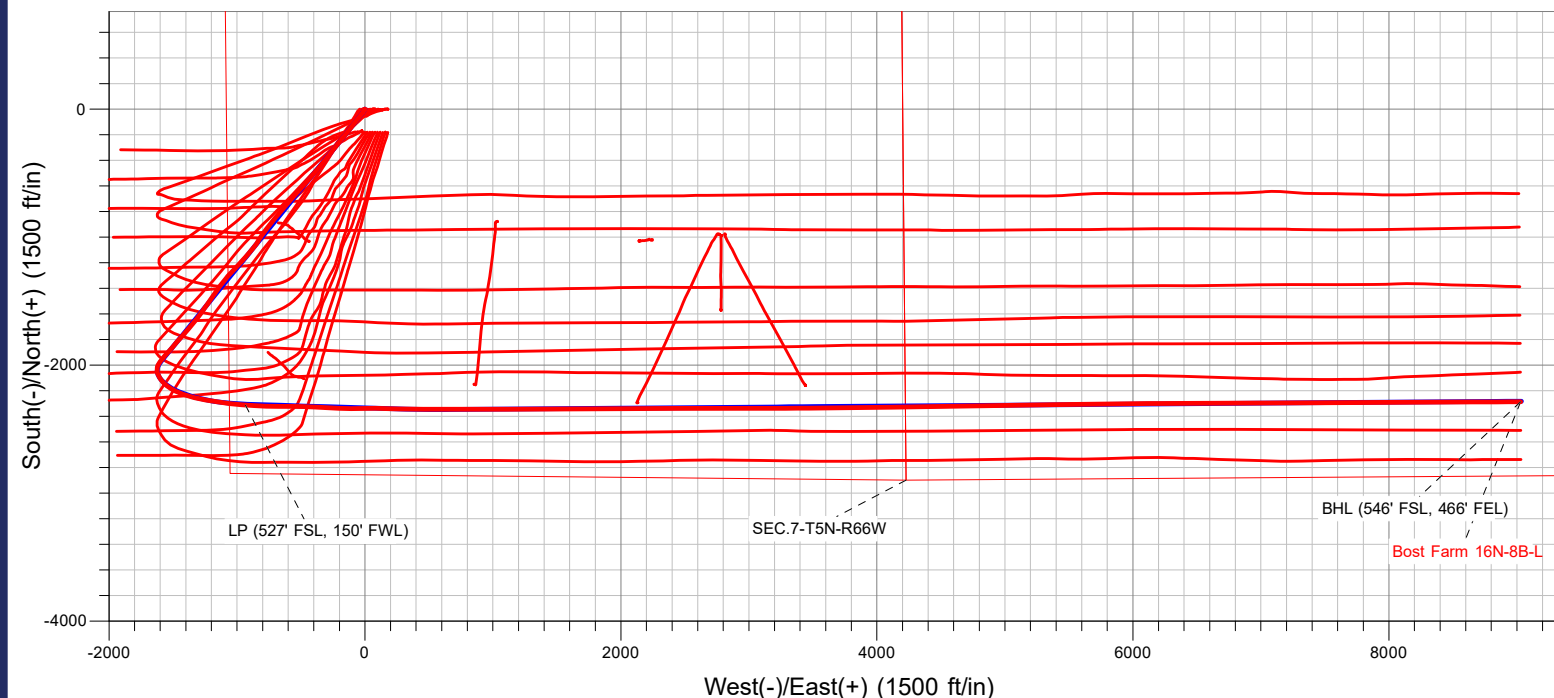
Bost Farms 5-7 Pad SEC.7-T5N-R66W
 Bost Farm 16N-8B-L
 16N-8B-L_Final Surveys
 14:10, May 16 2022

T Azimuths to True North
 Magnetic North: 7.90°

Magnetic Field
 Strength: 51913.9nT
 Dip Angle: 66.65°
 Date: 03/30/2022
 Model: HRGM

ANNOTATIONS		
MD	TVD	Annotation
8154.8	7155.9	LP (527' FSL, 150' FWL)
18119.0	7180.2	BHL (546' FSL, 466' FEL)

FINAL SURVEY
Projected Bottom Hole Location
18119' MD / 7180.2' TVD
90.03° INC / 89.59° AZM
546' FSL / 466' FEL





PDC Energy Inc. DJ Basin

SEC.7-T5N-R66W

Bost Farms 5-7 Pad SEC.7-T5N-R66W

Bost Farm 16N-8B-L

Bost Farm 16N-8B-L Wellbore #1

Survey: Surface

Standard Survey Report

16 May, 2022



Company:	PDC Energy Inc. DJ Basin	Local Co-ordinate Reference:	Well Bost Farm 16N-8B-L
Project:	SEC.7-T5N-R66W	TVD Reference:	WELL @ 4902 ft (Patterson 272 - RKB 28')
Site:	Bost Farms 5-7 Pad SEC.7-T5N-R66W	MD Reference:	WELL @ 4902 ft (Patterson 272 - RKB 28')
Well:	Bost Farm 16N-8B-L	North Reference:	True
Wellbore:	Bost Farm 16N-8B-L Wellbore #1	Survey Calculation Method:	Minimum Curvature
Design:	16N-8B-L_Final Surveys	Database:	US_EDM

Project	SEC.7-T5N-R66W, Weld County, Co		
Map System:	US State Plane 1983	System Datum:	Mean Sea Level
Geo Datum:	North American Datum 1983		
Map Zone:	Colorado Northern Zone		Using geodetic scale factor

Site	Bost Farms 5-7 Pad SEC.7-T5N-R66W				
Site Position:		Northing:	1,394,603.55 usft	Latitude:	40.414641
From:	Lat/Long	Easting:	3,187,178.01 usft	Longitude:	-104.827780
Position Uncertainty:	0.0 ft	Slot Radius:	13-3/16 "	Grid Convergence:	0.43 °

Well	Bost Farm 16N-8B-L					
Well Position	+N/-S	0.0 ft	Northing:	1,394,603.89 usft	Latitude:	40.414646
	+E/-W	0.0 ft	Easting:	3,186,996.61 usft	Longitude:	-104.828432
Position Uncertainty		0.0 ft	Wellhead Elevation:	ft	Ground Level:	4,874.0 ft

Wellbore	Bost Farm 16N-8B-L Wellbore #1				
Magnetics	Model Name	Sample Date	Declination (°)	Dip Angle (°)	Field Strength (nT)
	HRGM	03/30/2022	7.90	66.65	51,913.88017973

Design	16N-8B-L_Final Surveys				
Audit Notes:					
Version:	1.0	Phase:	ACTUAL	Tie On Depth:	0.0
Vertical Section:	Depth From (TVD) (ft)	+N/-S (ft)	+E/-W (ft)	Direction (°)	
	0.0	0.0	0.0	104.21	

Survey Program	Date	05/16/2022			
From (ft)	To (ft)	Survey (Wellbore)	Tool Name	Description	
161.5	18,119.0	Surface (Bost Farm 16N-8B-L Wellbore #1	MWD	MWD - Standard	

Survey										
Measured Depth (ft)	Inclination (°)	Azimuth (°)	Vertical Depth (ft)	+N/-S (ft)	+E/-W (ft)	Vertical Section (ft)	Dogleg Rate (°/100usft)	Build Rate (°/100usft)	Turn Rate (°/100usft)	
0.0	0.00	0.00	0.0	0.0	0.0	0.0	0.00	0.00	0.00	
161.5	0.40	287.80	161.5	0.2	-0.5	-0.6	0.25	0.25	0.00	
252.5	0.40	260.90	252.5	0.2	-1.2	-1.2	0.20	0.00	-29.56	
344.5	1.40	240.70	344.5	-0.4	-2.5	-2.3	1.12	1.09	-21.96	
433.5	2.80	213.90	433.4	-2.7	-4.6	-3.8	1.88	1.57	-30.11	
522.5	4.30	203.90	522.3	-7.6	-7.2	-5.1	1.82	1.69	-11.24	
612.5	6.40	206.70	611.9	-15.1	-10.8	-6.7	2.35	2.33	3.11	
702.5	8.90	211.30	701.0	-25.6	-16.7	-9.9	2.86	2.78	5.11	
790.2	10.18	217.71	787.5	-37.5	-24.9	-15.0	1.90	1.46	7.32	
Fox Hills Aq Base										
791.5	10.20	217.80	788.8	-37.7	-25.1	-15.1	1.90	1.52	6.38	

Company:	PDC Energy Inc. DJ Basin	Local Co-ordinate Reference:	Well Bost Farm 16N-8B-L
Project:	SEC.7-T5N-R66W	TVD Reference:	WELL @ 4902 ft (Patterson 272 - RKB 28')
Site:	Bost Farms 5-7 Pad SEC.7-T5N-R66W	MD Reference:	WELL @ 4902 ft (Patterson 272 - RKB 28')
Well:	Bost Farm 16N-8B-L	North Reference:	True
Wellbore:	Bost Farm 16N-8B-L Wellbore #1	Survey Calculation Method:	Minimum Curvature
Design:	16N-8B-L_Final Surveys	Database:	US_EDM

Survey

Measured Depth (ft)	Inclination (°)	Azimuth (°)	Vertical Depth (ft)	+N/-S (ft)	+E/-W (ft)	Vertical Section (ft)	Dogleg Rate (°/100usft)	Build Rate (°/100usft)	Turn Rate (°/100usft)
880.5	11.30	220.30	876.3	-50.6	-35.5	-22.0	1.34	1.24	2.81
970.5	12.70	218.70	964.3	-65.0	-47.4	-30.0	1.60	1.56	-1.78
1,059.5	14.00	216.90	1,050.9	-81.3	-60.0	-38.2	1.53	1.46	-2.02
1,149.5	15.70	217.60	1,137.9	-99.6	-74.0	-47.3	1.90	1.89	0.78
1,238.5	18.90	219.20	1,222.8	-120.3	-90.4	-58.1	3.63	3.60	1.80
1,328.5	20.80	218.50	1,307.5	-144.1	-109.6	-70.9	2.13	2.11	-0.78
1,417.5	23.10	219.40	1,390.0	-170.0	-130.5	-84.8	2.61	2.58	1.01
1,506.5	24.50	218.30	1,471.5	-198.0	-153.0	-99.8	1.65	1.57	-1.24
1,595.5	24.90	218.90	1,552.3	-227.0	-176.3	-115.1	0.53	0.45	0.67
1,649.5	24.90	218.70	1,601.3	-244.7	-190.5	-124.6	0.16	0.00	-0.37
1,785.0	23.38	219.54	1,724.9	-287.7	-225.5	-147.9	1.15	-1.12	0.62
1,880.0	24.92	219.45	1,811.6	-317.7	-250.2	-164.5	1.62	1.62	-0.09
1,974.0	25.03	217.10	1,896.8	-348.9	-274.7	-180.7	1.06	0.12	-2.50
2,069.0	26.23	219.83	1,982.5	-381.0	-300.3	-197.6	1.77	1.26	2.87
2,164.0	25.83	217.46	2,067.9	-413.6	-326.4	-214.8	1.17	-0.42	-2.49
2,258.0	25.65	216.02	2,152.5	-446.3	-350.8	-230.5	0.69	-0.19	-1.53
2,353.0	25.88	218.66	2,238.1	-479.1	-375.8	-246.7	1.23	0.24	2.78
2,448.0	26.19	222.36	2,323.4	-510.8	-402.9	-265.2	1.74	0.33	3.89
2,542.0	26.35	221.78	2,407.7	-541.7	-430.8	-284.6	0.32	0.17	-0.62
2,637.0	26.36	222.36	2,492.9	-573.0	-459.0	-304.3	0.27	0.01	0.61
2,731.0	26.48	222.75	2,577.0	-603.8	-487.3	-324.2	0.22	0.13	0.41
2,826.0	26.41	222.09	2,662.1	-635.0	-515.9	-344.2	0.32	-0.07	-0.69
2,920.0	25.84	221.90	2,746.5	-665.8	-543.5	-363.5	0.61	-0.61	-0.20
3,015.0	25.74	221.09	2,832.0	-696.8	-570.9	-382.4	0.39	-0.11	-0.85
3,110.0	25.72	219.91	2,917.6	-728.1	-597.7	-400.7	0.54	-0.02	-1.24
3,205.0	25.42	220.22	3,003.3	-759.5	-624.1	-418.6	0.35	-0.32	0.33
3,299.0	25.36	219.89	3,088.2	-790.3	-650.0	-436.2	0.16	-0.06	-0.35
3,395.0	25.36	219.51	3,175.0	-822.0	-676.3	-453.8	0.17	0.00	-0.40
3,489.0	25.30	219.72	3,260.0	-853.0	-702.0	-471.1	0.11	-0.06	0.22
3,584.0	25.10	220.03	3,345.9	-884.0	-727.9	-488.6	0.25	-0.21	0.33
3,679.0	24.99	216.95	3,432.0	-915.5	-752.9	-505.2	1.38	-0.12	-3.24
3,773.0	25.02	216.57	3,517.2	-947.3	-776.7	-520.4	0.17	0.03	-0.40
3,868.0	25.09	216.51	3,603.2	-979.6	-800.6	-535.7	0.08	0.07	-0.06
3,963.0	25.47	211.45	3,689.1	-1,013.2	-823.3	-549.4	2.31	0.40	-5.33
4,021.0	25.39	212.20	3,741.5	-1,034.4	-836.4	-556.9	0.57	-0.13	1.30
Parkman									
4,057.0	25.35	212.67	3,774.1	-1,047.4	-844.7	-561.7	0.57	-0.12	1.30
4,152.0	25.32	220.36	3,859.9	-1,080.0	-868.8	-577.1	3.46	-0.03	8.09
4,246.0	25.03	219.47	3,945.0	-1,110.7	-894.5	-594.5	0.51	-0.31	-0.95
4,435.0	25.22	221.80	4,116.1	-1,171.6	-946.7	-630.2	0.53	0.10	1.23
4,530.0	25.04	223.67	4,202.1	-1,201.2	-974.1	-649.5	0.86	-0.19	1.97
4,625.4	25.15	223.12	4,288.5	-1,230.6	-1,001.9	-669.2	0.27	0.11	-0.58
Sussex									

Company:	PDC Energy Inc. DJ Basin	Local Co-ordinate Reference:	Well Bost Farm 16N-8B-L
Project:	SEC.7-T5N-R66W	TVD Reference:	WELL @ 4902 ft (Patterson 272 - RKB 28')
Site:	Bost Farms 5-7 Pad SEC.7-T5N-R66W	MD Reference:	WELL @ 4902 ft (Patterson 272 - RKB 28')
Well:	Bost Farm 16N-8B-L	North Reference:	True
Wellbore:	Bost Farm 16N-8B-L Wellbore #1	Survey Calculation Method:	Minimum Curvature
Design:	16N-8B-L_Final Surveys	Database:	US_EDM

Survey

Measured Depth (ft)	Inclination (°)	Azimuth (°)	Vertical Depth (ft)	+N/-S (ft)	+E/-W (ft)	Vertical Section (ft)	Dogleg Rate (°/100usft)	Build Rate (°/100usft)	Turn Rate (°/100usft)
4,720.0	25.26	222.58	4,374.1	-1,260.2	-1,029.3	-688.5	0.27	0.12	-0.57
4,815.0	25.32	222.33	4,460.0	-1,290.1	-1,056.7	-707.7	0.13	0.06	-0.26
4,909.0	25.13	219.12	4,545.1	-1,320.4	-1,082.8	-725.6	1.47	-0.20	-3.41
5,099.0	25.10	218.55	4,717.1	-1,383.3	-1,133.4	-759.2	0.13	-0.02	-0.30
5,194.0	25.46	211.47	4,803.0	-1,416.4	-1,156.6	-773.6	3.20	0.38	-7.45
5,288.0	24.71	217.32	4,888.2	-1,449.3	-1,179.1	-787.3	2.76	-0.80	6.22
5,336.8	24.80	215.98	4,932.5	-1,465.7	-1,191.3	-795.1	1.17	0.19	-2.75
Shannon									
5,383.0	24.90	214.72	4,974.4	-1,481.5	-1,202.5	-802.1	1.17	0.21	-2.73
5,478.0	23.48	212.03	5,061.1	-1,514.0	-1,224.0	-814.9	1.89	-1.49	-2.83
5,572.0	24.63	218.12	5,146.9	-1,545.3	-1,246.0	-828.5	2.91	1.22	6.48
5,667.0	24.55	213.67	5,233.3	-1,577.3	-1,269.1	-843.1	1.95	-0.08	-4.68
5,762.0	25.47	216.06	5,319.4	-1,610.3	-1,292.1	-857.3	1.44	0.97	2.52
5,856.0	25.71	219.26	5,404.2	-1,642.4	-1,316.9	-873.5	1.49	0.26	3.40
5,951.0	22.39	219.40	5,490.9	-1,672.3	-1,341.4	-889.9	3.50	-3.49	0.15
6,046.0	24.46	220.63	5,578.1	-1,701.2	-1,365.7	-906.4	2.24	2.18	1.29
6,141.0	24.66	221.12	5,664.5	-1,731.1	-1,391.6	-924.1	0.30	0.21	0.52
6,235.0	25.68	220.82	5,749.6	-1,761.3	-1,417.8	-942.1	1.09	1.09	-0.32
6,330.0	24.32	221.57	5,835.7	-1,791.5	-1,444.2	-960.3	1.47	-1.43	0.79
6,425.0	25.54	220.79	5,921.8	-1,821.6	-1,470.6	-978.4	1.33	1.28	-0.82
6,520.0	26.78	221.29	6,007.1	-1,853.2	-1,498.1	-997.4	1.33	1.31	0.53
6,614.0	26.56	220.61	6,091.1	-1,885.1	-1,525.7	-1,016.3	0.40	-0.23	-0.72
6,709.0	26.24	220.03	6,176.2	-1,917.3	-1,553.1	-1,034.9	0.43	-0.34	-0.61
6,804.0	26.35	221.08	6,261.3	-1,949.3	-1,580.4	-1,053.6	0.50	0.12	1.11
6,898.0	26.54	215.00	6,345.5	-1,982.2	-1,606.2	-1,070.5	2.89	0.20	-6.47
6,993.0	24.25	192.69	6,431.5	-2,018.7	-1,622.7	-1,077.5	10.30	-2.41	-23.48
7,088.0	20.03	167.79	6,519.7	-2,053.7	-1,623.5	-1,069.7	10.73	-4.44	-26.21
7,182.0	24.76	149.97	6,606.7	-2,086.6	-1,610.3	-1,048.8	8.75	5.03	-18.96
7,277.0	31.15	144.85	6,690.6	-2,123.9	-1,586.1	-1,016.3	7.18	6.73	-5.39
7,371.0	33.46	127.28	6,770.2	-2,159.6	-1,551.4	-973.9	10.25	2.46	-18.69
7,465.0	36.87	119.83	6,847.1	-2,189.3	-1,506.3	-922.8	5.83	3.63	-7.93
7,560.0	43.17	110.73	6,919.8	-2,215.1	-1,451.1	-863.0	9.04	6.63	-9.58
7,594.4	45.16	108.88	6,944.5	-2,223.2	-1,428.6	-839.1	6.90	5.79	-5.37
Sharon Springs									
7,654.4	48.71	105.95	6,985.5	-2,236.3	-1,386.7	-795.4	6.90	5.90	-4.89
Niobrara A									
7,655.0	48.74	105.92	6,985.9	-2,236.4	-1,386.3	-794.9	6.90	5.96	-4.62
7,749.0	58.29	105.29	7,041.7	-2,256.7	-1,313.6	-719.5	10.17	10.16	-0.67
7,844.0	65.02	101.08	7,086.8	-2,275.6	-1,232.2	-635.9	8.08	7.08	-4.43
7,939.0	71.32	97.42	7,122.1	-2,289.7	-1,145.2	-548.1	7.53	6.63	-3.85
7,963.6	73.74	97.16	7,129.5	-2,292.7	-1,122.0	-524.9	9.89	9.84	-1.04
Niobrara B									
8,033.0	80.57	96.47	7,144.9	-2,300.7	-1,054.8	-457.8	9.89	9.84	-1.00
8,128.0	87.48	94.88	7,154.8	-2,310.1	-960.9	-364.4	7.46	7.27	-1.67

Company:	PDC Energy Inc. DJ Basin	Local Co-ordinate Reference:	Well Bost Farm 16N-8B-L
Project:	SEC.7-T5N-R66W	TVD Reference:	WELL @ 4902 ft (Patterson 272 - RKB 28')
Site:	Bost Farms 5-7 Pad SEC.7-T5N-R66W	MD Reference:	WELL @ 4902 ft (Patterson 272 - RKB 28')
Well:	Bost Farm 16N-8B-L	North Reference:	True
Wellbore:	Bost Farm 16N-8B-L Wellbore #1	Survey Calculation Method:	Minimum Curvature
Design:	16N-8B-L_Final Surveys	Database:	US_EDM

Survey

Measured Depth (ft)	Inclination (°)	Azimuth (°)	Vertical Depth (ft)	+N/-S (ft)	+E/-W (ft)	Vertical Section (ft)	Dogleg Rate (°/100usft)	Build Rate (°/100usft)	Turn Rate (°/100usft)	
8,154.8	87.96	94.34	7,155.9	-2,312.2	-934.2	-338.0	2.69	1.80	-2.00	
LP (527' FSL, 150' FWL)										
8,223.0	89.19	92.98	7,157.6	-2,316.6	-866.1	-271.0	2.69	1.80	-2.00	
8,317.0	88.57	91.22	7,159.4	-2,320.0	-772.2	-179.1	1.98	-0.66	-1.87	
8,412.0	89.03	90.67	7,161.4	-2,321.6	-677.2	-86.7	0.75	0.48	-0.58	
8,507.0	88.54	90.97	7,163.4	-2,322.9	-582.3	5.7	0.60	-0.52	0.32	
8,602.0	89.16	90.57	7,165.3	-2,324.2	-487.3	98.1	0.78	0.65	-0.42	
8,696.0	88.55	93.12	7,167.2	-2,327.2	-393.4	189.9	2.79	-0.65	2.71	
8,791.0	88.59	93.46	7,169.6	-2,332.7	-298.6	283.2	0.36	0.04	0.36	
8,886.0	88.36	92.43	7,172.1	-2,337.6	-203.7	376.3	1.11	-0.24	-1.08	
8,980.0	88.48	90.26	7,174.7	-2,339.8	-109.8	467.9	2.31	0.13	-2.31	
9,075.0	89.10	87.97	7,176.7	-2,338.3	-14.8	559.6	2.50	0.65	-2.41	
9,170.0	88.00	91.33	7,179.1	-2,337.7	80.1	651.5	3.72	-1.16	3.54	
9,264.0	87.90	91.36	7,182.5	-2,339.9	174.0	743.1	0.11	-0.11	0.03	
9,359.0	87.97	91.24	7,185.9	-2,342.1	268.9	835.6	0.15	0.07	-0.13	
9,454.0	88.00	90.97	7,189.2	-2,343.9	363.9	928.1	0.29	0.03	-0.28	
9,548.0	90.04	90.26	7,190.8	-2,344.9	457.8	1,019.4	2.30	2.17	-0.76	
9,643.0	89.99	89.85	7,190.8	-2,345.0	552.8	1,111.5	0.43	-0.05	-0.43	
9,737.0	90.23	89.63	7,190.6	-2,344.6	646.8	1,202.6	0.35	0.26	-0.23	
9,831.0	90.01	89.83	7,190.4	-2,344.1	740.8	1,293.6	0.32	-0.23	0.21	
9,926.0	90.13	89.78	7,190.3	-2,343.8	835.8	1,385.6	0.14	0.13	-0.05	
10,020.0	90.11	90.05	7,190.1	-2,343.7	929.8	1,476.7	0.29	-0.02	0.29	
10,208.0	90.02	89.92	7,189.9	-2,343.6	1,117.8	1,658.9	0.08	-0.05	-0.07	
10,302.0	90.06	89.93	7,189.8	-2,343.5	1,211.8	1,750.0	0.04	0.04	0.01	
10,396.0	90.24	89.79	7,189.6	-2,343.3	1,305.8	1,841.1	0.24	0.19	-0.15	
10,490.0	90.19	89.77	7,189.2	-2,342.9	1,399.8	1,932.1	0.06	-0.05	-0.02	
10,584.0	89.88	89.90	7,189.2	-2,342.6	1,493.8	2,023.2	0.36	-0.33	0.14	
10,773.0	90.00	89.77	7,189.4	-2,342.1	1,682.8	2,206.3	0.09	0.06	-0.07	
10,868.0	90.04	89.60	7,189.4	-2,341.6	1,777.8	2,298.2	0.18	0.04	-0.18	
10,962.0	90.34	89.91	7,189.0	-2,341.2	1,871.8	2,389.2	0.46	0.32	0.33	
11,057.0	89.91	89.99	7,188.8	-2,341.1	1,966.8	2,481.3	0.46	-0.45	0.08	
11,152.0	90.24	89.47	7,188.7	-2,340.6	2,061.8	2,573.3	0.65	0.35	-0.55	
11,246.0	90.17	89.12	7,188.4	-2,339.5	2,155.8	2,664.1	0.38	-0.07	-0.37	
11,340.0	90.11	89.70	7,188.1	-2,338.5	2,249.8	2,755.0	0.62	-0.06	0.62	
11,435.0	89.74	89.85	7,188.3	-2,338.1	2,344.8	2,847.0	0.42	-0.39	0.16	
11,529.0	89.77	89.75	7,188.7	-2,337.8	2,438.8	2,938.1	0.11	0.03	-0.11	
11,624.0	89.87	89.63	7,189.0	-2,337.3	2,533.8	3,030.0	0.16	0.11	-0.13	
11,718.0	89.78	89.82	7,189.3	-2,336.8	2,627.8	3,121.0	0.22	-0.10	0.20	
11,812.0	89.66	90.17	7,189.7	-2,336.8	2,721.8	3,212.2	0.39	-0.13	0.37	
11,906.0	89.73	90.04	7,190.2	-2,337.0	2,815.8	3,303.3	0.16	0.07	-0.14	
12,000.0	89.87	89.90	7,190.5	-2,337.0	2,909.8	3,394.4	0.21	0.15	-0.15	
12,094.0	89.71	89.96	7,190.9	-2,336.8	3,003.8	3,485.5	0.18	-0.17	0.06	
12,188.0	89.69	89.93	7,191.4	-2,336.8	3,097.8	3,576.6	0.04	-0.02	-0.03	
12,283.0	89.67	90.06	7,191.9	-2,336.8	3,192.8	3,668.7	0.14	-0.02	0.14	

Company:	PDC Energy Inc. DJ Basin	Local Co-ordinate Reference:	Well Bost Farm 16N-8B-L
Project:	SEC.7-T5N-R66W	TVD Reference:	WELL @ 4902 ft (Patterson 272 - RKB 28')
Site:	Bost Farms 5-7 Pad SEC.7-T5N-R66W	MD Reference:	WELL @ 4902 ft (Patterson 272 - RKB 28')
Well:	Bost Farm 16N-8B-L	North Reference:	True
Wellbore:	Bost Farm 16N-8B-L Wellbore #1	Survey Calculation Method:	Minimum Curvature
Design:	16N-8B-L_Final Surveys	Database:	US_EDM

Survey

Measured Depth (ft)	Inclination (°)	Azimuth (°)	Vertical Depth (ft)	+N/-S (ft)	+E/-W (ft)	Vertical Section (ft)	Dogleg Rate (°/100usft)	Build Rate (°/100usft)	Turn Rate (°/100usft)
12,377.0	90.38	89.73	7,191.9	-2,336.6	3,286.8	3,759.8	0.83	0.76	-0.35
12,469.0	89.65	90.16	7,191.8	-2,336.5	3,378.8	3,849.0	0.92	-0.79	0.47
12,563.0	89.93	89.85	7,192.2	-2,336.5	3,472.8	3,940.1	0.44	0.30	-0.33
12,752.0	89.72	89.46	7,192.8	-2,335.4	3,661.8	4,123.0	0.23	-0.11	-0.21
12,846.0	89.70	89.20	7,193.2	-2,334.3	3,755.8	4,213.9	0.28	-0.02	-0.28
12,941.0	90.28	89.42	7,193.3	-2,333.1	3,850.8	4,305.7	0.65	0.61	0.23
13,035.0	90.45	88.05	7,192.7	-2,331.0	3,944.8	4,396.3	1.47	0.18	-1.46
13,129.0	90.11	89.33	7,192.2	-2,328.9	4,038.7	4,486.8	1.41	-0.36	1.36
13,223.0	89.94	88.81	7,192.2	-2,327.4	4,132.7	4,577.6	0.58	-0.18	-0.55
13,317.0	89.74	89.14	7,192.4	-2,325.7	4,226.7	4,668.3	0.41	-0.21	0.35
13,412.0	89.90	88.79	7,192.7	-2,324.0	4,321.7	4,759.9	0.41	0.17	-0.37
13,507.0	89.98	89.34	7,192.8	-2,322.4	4,416.7	4,851.6	0.59	0.08	0.58
13,601.0	90.00	89.26	7,192.8	-2,321.3	4,510.7	4,942.5	0.09	0.02	-0.09
13,695.0	89.73	89.66	7,193.1	-2,320.4	4,604.7	5,033.4	0.51	-0.29	0.43
13,790.0	89.82	89.92	7,193.4	-2,320.0	4,699.7	5,125.4	0.29	0.09	0.27
13,884.0	89.80	89.56	7,193.7	-2,319.6	4,793.7	5,216.4	0.38	-0.02	-0.38
13,978.0	89.83	88.68	7,194.0	-2,318.2	4,887.6	5,307.1	0.94	0.03	-0.94
14,072.0	89.83	89.16	7,194.3	-2,316.4	4,981.6	5,397.8	0.51	0.00	0.51
14,167.0	90.14	88.60	7,194.3	-2,314.5	5,076.6	5,489.4	0.67	0.33	-0.59
14,262.0	90.77	89.25	7,193.6	-2,312.8	5,171.6	5,581.1	0.95	0.66	0.68
14,356.0	91.00	88.79	7,192.1	-2,311.1	5,265.6	5,671.8	0.55	0.24	-0.49
14,451.0	90.95	88.84	7,190.5	-2,309.2	5,360.5	5,763.3	0.07	-0.05	0.05
14,545.0	91.35	88.65	7,188.6	-2,307.1	5,454.5	5,853.9	0.47	0.43	-0.20
14,639.0	90.93	89.12	7,186.8	-2,305.3	5,548.4	5,944.6	0.67	-0.45	0.50
14,733.0	91.10	89.05	7,185.1	-2,303.8	5,642.4	6,035.3	0.20	0.18	-0.07
14,827.0	91.11	89.43	7,183.3	-2,302.5	5,736.4	6,126.1	0.40	0.01	0.40
14,921.0	90.26	89.77	7,182.2	-2,301.9	5,830.4	6,217.0	0.97	-0.90	0.36
15,016.0	89.83	89.81	7,182.1	-2,301.5	5,925.4	6,309.0	0.45	-0.45	0.04
15,110.0	89.84	89.62	7,182.4	-2,301.1	6,019.4	6,400.1	0.20	0.01	-0.20
15,204.0	90.14	89.52	7,182.4	-2,300.4	6,113.4	6,491.0	0.34	0.32	-0.11
15,298.0	89.91	89.73	7,182.3	-2,299.8	6,207.4	6,582.0	0.33	-0.24	0.22
15,392.0	90.34	89.39	7,182.1	-2,299.0	6,301.4	6,672.9	0.58	0.46	-0.36
15,486.0	90.02	89.75	7,181.8	-2,298.3	6,395.4	6,763.9	0.51	-0.34	0.38
15,580.0	89.88	89.89	7,181.9	-2,298.0	6,489.4	6,854.9	0.21	-0.15	0.15
15,675.0	90.11	89.69	7,181.9	-2,297.7	6,584.4	6,946.9	0.32	0.24	-0.21
15,769.0	90.03	89.81	7,181.8	-2,297.3	6,678.4	7,037.9	0.15	-0.09	0.13
15,863.0	89.92	89.85	7,181.9	-2,297.0	6,772.4	7,129.0	0.12	-0.12	0.04
15,957.0	90.14	89.40	7,181.8	-2,296.4	6,866.4	7,220.0	0.53	0.23	-0.48
16,051.0	89.82	90.05	7,181.8	-2,295.9	6,960.4	7,311.0	0.77	-0.34	0.69
16,145.0	90.08	89.62	7,181.9	-2,295.7	7,054.4	7,402.0	0.53	0.28	-0.46
16,239.0	90.05	89.76	7,181.8	-2,295.2	7,148.4	7,493.0	0.15	-0.03	0.15
16,333.0	90.05	89.73	7,181.7	-2,294.7	7,242.4	7,584.1	0.03	0.00	-0.03
16,427.0	90.20	89.87	7,181.5	-2,294.4	7,336.4	7,675.1	0.22	0.16	0.15

Company:	PDC Energy Inc. DJ Basin	Local Co-ordinate Reference:	Well Bost Farm 16N-8B-L
Project:	SEC.7-T5N-R66W	TVD Reference:	WELL @ 4902 ft (Patterson 272 - RKB 28')
Site:	Bost Farms 5-7 Pad SEC.7-T5N-R66W	MD Reference:	WELL @ 4902 ft (Patterson 272 - RKB 28')
Well:	Bost Farm 16N-8B-L	North Reference:	True
Wellbore:	Bost Farm 16N-8B-L Wellbore #1	Survey Calculation Method:	Minimum Curvature
Design:	16N-8B-L_Final Surveys	Database:	US_EDM

Survey

Measured Depth (ft)	Inclination (°)	Azimuth (°)	Vertical Depth (ft)	+N/-S (ft)	+E/-W (ft)	Vertical Section (ft)	Dogleg Rate (°/100usft)	Build Rate (°/100usft)	Turn Rate (°/100usft)
16,521.0	90.24	89.46	7,181.2	-2,293.9	7,430.4	7,766.1	0.44	0.04	-0.44
16,615.0	89.88	90.03	7,181.1	-2,293.4	7,524.4	7,857.1	0.72	-0.38	0.61
16,709.0	90.23	89.96	7,181.0	-2,293.4	7,618.4	7,948.2	0.38	0.37	-0.07
16,803.0	90.03	89.49	7,180.8	-2,293.0	7,712.4	8,039.2	0.54	-0.21	-0.50
16,897.0	89.74	89.73	7,181.0	-2,292.3	7,806.4	8,130.2	0.40	-0.31	0.26
16,991.0	90.05	89.66	7,181.1	-2,291.8	7,900.3	8,221.2	0.34	0.33	-0.07
17,085.0	90.31	89.52	7,180.8	-2,291.2	7,994.3	8,312.2	0.31	0.28	-0.15
17,180.0	90.01	90.08	7,180.6	-2,290.8	8,089.3	8,404.2	0.67	-0.32	0.59
17,274.0	90.21	89.48	7,180.4	-2,290.5	8,183.3	8,495.2	0.67	0.21	-0.64
17,368.0	90.01	89.78	7,180.2	-2,289.9	8,277.3	8,586.2	0.38	-0.21	0.32
17,462.0	89.99	89.57	7,180.2	-2,289.3	8,371.3	8,677.2	0.22	-0.02	-0.22
17,556.0	90.10	89.80	7,180.1	-2,288.8	8,465.3	8,768.2	0.27	0.12	0.24
17,650.0	90.11	89.55	7,180.0	-2,288.3	8,559.3	8,859.2	0.27	0.01	-0.27
17,745.0	89.71	89.79	7,180.1	-2,287.7	8,654.3	8,951.1	0.49	-0.42	0.25
17,840.0	89.88	90.01	7,180.4	-2,287.6	8,749.3	9,043.2	0.29	0.18	0.23
17,934.0	90.18	89.70	7,180.4	-2,287.3	8,843.3	9,134.2	0.46	0.32	-0.33
18,028.0	90.03	89.59	7,180.2	-2,286.7	8,937.3	9,225.2	0.20	-0.16	-0.12
18,119.0	90.03	89.59	7,180.2	-2,286.1	9,028.3	9,313.3	0.00	0.00	0.00
BHL (546' FSL, 466' FEL)									

Formations

Measured Depth (ft)	Vertical Depth (ft)	Name	Lithology	Dip (°)	Dip Direction (°)
790.2	787.5	Fox Hills Aq Base			
4,021.0	3,741.5	Parkman			
4,625.4	4,288.5	Sussex			
5,336.8	4,932.5	Shannon			
7,594.4	6,944.5	Sharon Springs			
7,654.4	6,985.5	Niobrara A			
7,963.6	7,129.5	Niobrara B			

Survey Annotations

Measured Depth (ft)	Vertical Depth (ft)	Local Coordinates		Comment
		+N/-S (ft)	+E/-W (ft)	
8,154.8	7,155.9	-2,312.2	-934.2	LP (527' FSL, 150' FWL)
18,119.0	7,180.2	-2,286.1	9,028.3	BHL (546' FSL, 466' FEL)