

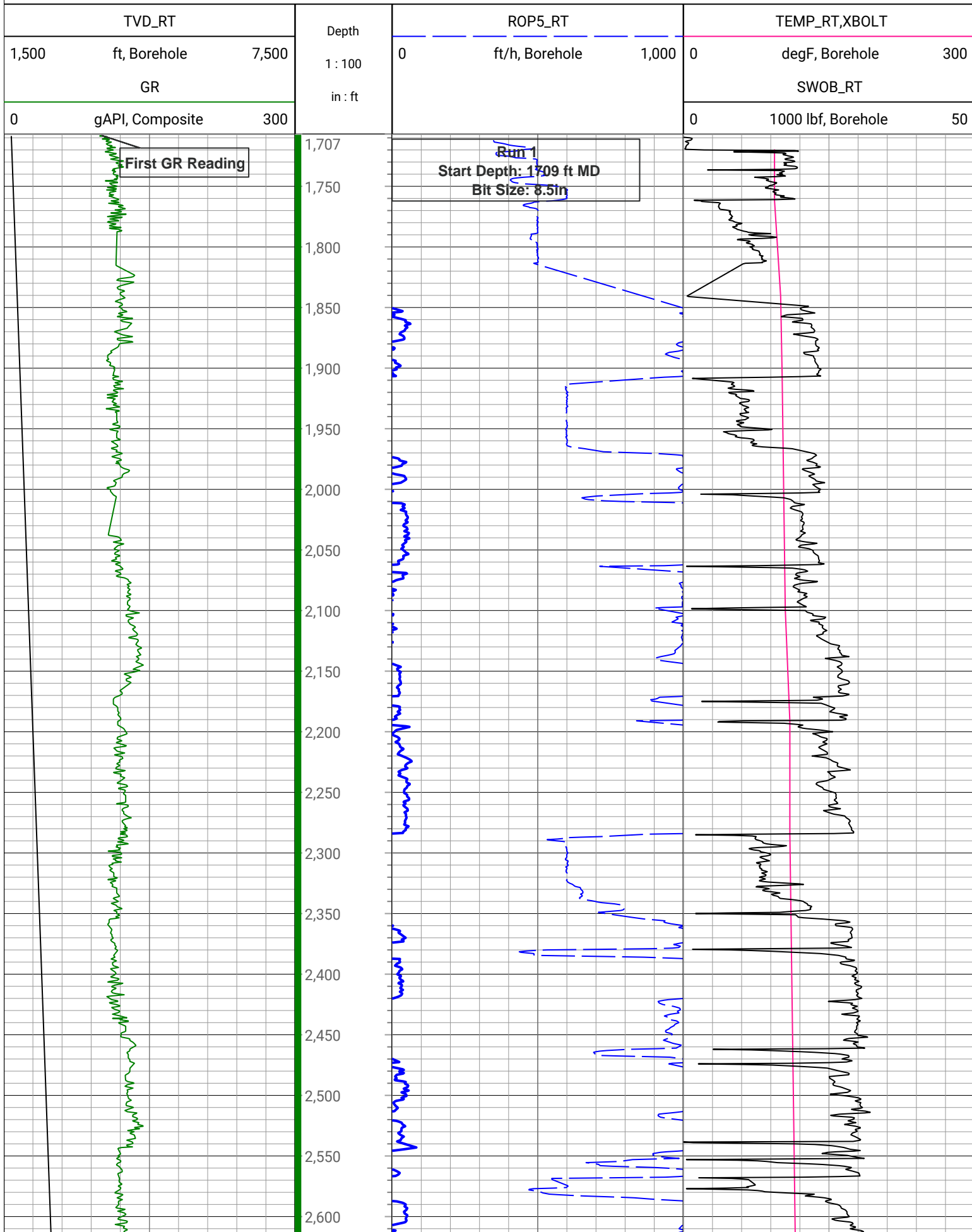
Company: PDC Energy Inc		Well: Bost Farm 16N-8B-L		Field Name: Wattenberg		Country Name: United States		State Name: Colorado		County Name: Weld	
<div>Xbolt GAMMA RAY</div> <div>1in/100ft Measured Depth</div> <div>Final Print</div> <div>Recorded Mode</div> <div>Schlumberger</div>											
Company: PDC Energy Inc						PDC Energy Inc					
Well: Bost Farm 16N-8B-L						Bost Farm 16N-8B-L					
Field Name: Wattenberg						Wattenberg					
Country Name: United States						United States					
State Name: Colorado						Colorado					
County Name: Weld						Weld					
Latitude: 40°24'52.726"N				API Number: 05-123-51455							
Longitude: 104°49'42.352"W				Rig Name: Patterson 272							
Spud Date: 03-Apr-2022				Rig Type: Land rig							
Log Interval: 1708.00--18119.00(ft)				Job Number: 22CC00030							
Depth Source: Driller's Depth				Print Type: Final Print							
Log Measured From: Drill Floor				Northing: 1394603.99(ft)							
Drill Floor Elevation:4902.00(ft)				Easting: 3186996.72(ft)							
Ground Level Elevation:4874.00(ft)				Coordinate System:Plane, Northern Zone, US Feet							
Permanent Datum:Sea Level											

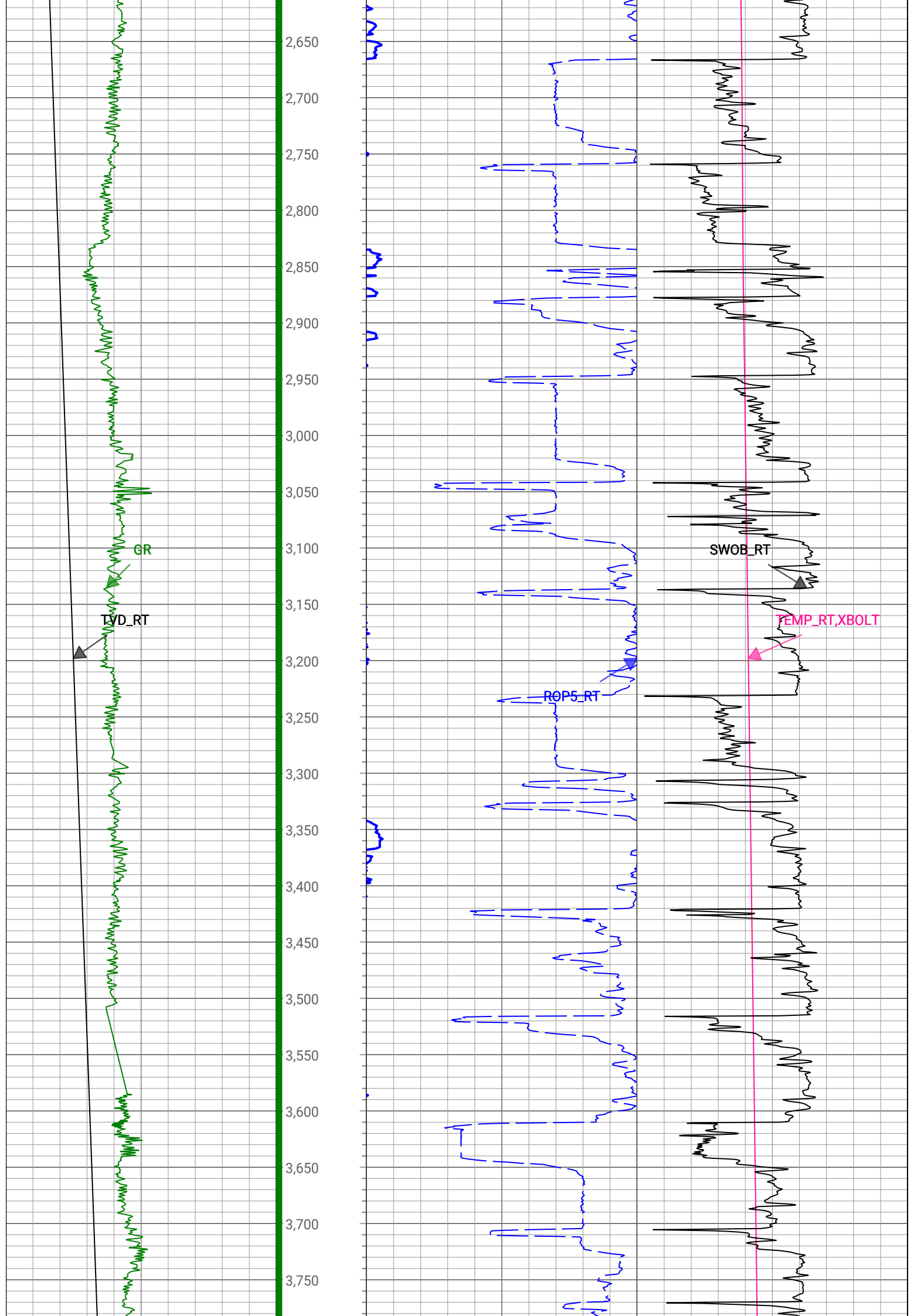
Disclaimer

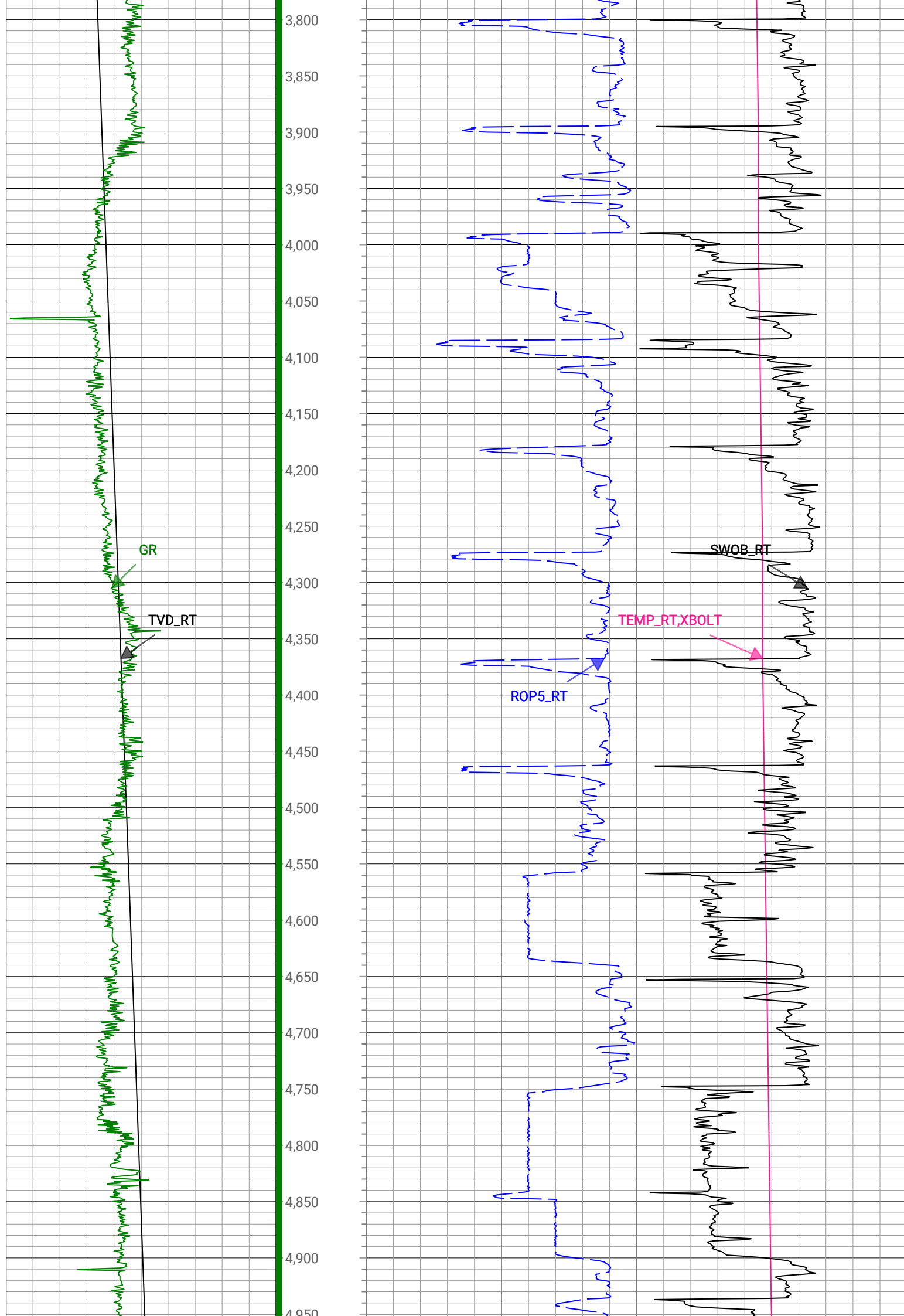
THE USE OF AND RELIANCE UPON THIS RECORDED-DATA BY THE HEREIN NAMED COMPANY (AND ANY OF ITS AFFILIATES, PARTNERS, REPRESENTATIVES, AGENTS, CONSULTANTS AND EMPLOYEES) IS SUBJECT TO THE TERMS AND CONDITIONS AGREED UPON BETWEEN SCHLUMBERGER AND THE COMPANY, INCLUDING: (a) RESTRICTIONS ON USE OF THE RECORDED-DATA; (b) DISCLAIMERS AND WAIVERS OF WARRANTIES AND REPRESENTATIONS REGARDING COMPANY'S USE AND RELIANCE UPON THE RECORDED-DATA; AND (c) CUSTOMER'S FULL AND SOLE RESPONSIBILITY FOR ANY INFERENCE DRAWN OR DECISION MADE IN CONNECTION WITH THE USE OF THIS RECORDED-DATA.

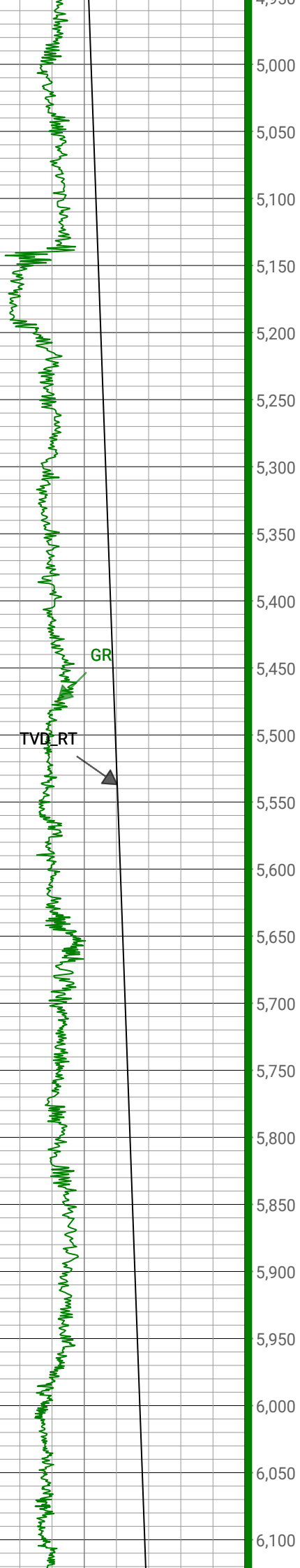
Operational Run Summary			
Notes			
Run 1: Gamma from 1708.00 ft. to 7410.00 ft was delivered in RT due to MWD ruptured.			
Run 2: Gamma from 1708.00 ft. to 7410.00 ft was delivered in RT due to MWD ruptured.			
Run 1 (Bit Size: 8.5 in)			
DateTime Log Started	05-Apr-2022 07:50:00	DateTime Log Finished	10-Apr-2022 03:04:08
Start Depth (ft)	1709	Stop Depth (ft)	7436
Mud Type	Oil Based Mud	Mud Density (lbm/gal)	10
Potassium (%)	0	Barite	Yes
GR Sensor Offset (ft)	25.57	Calibration Coefficient	0
DNI Sensor Offset (ft)	29.21		
Run 2 (Bit Size: 8.5 in)			
DateTime Log Started	10-Apr-2022 03:04:09	DateTime Log Finished	12-Apr-2022 15:11:44
Start Depth (ft)	7436	Stop Depth (ft)	18119
Mud Type	Oil Based Mud	Mud Density (lbm/gal)	10

Description: Xbolt GAMMA RAY	Format: XBOLT_PDC_Bost Farm	Index Scale: 1in/100ft	Index Unit: ft	Index Type: Measured Depth
Creation Date: 13-Apr-2022				

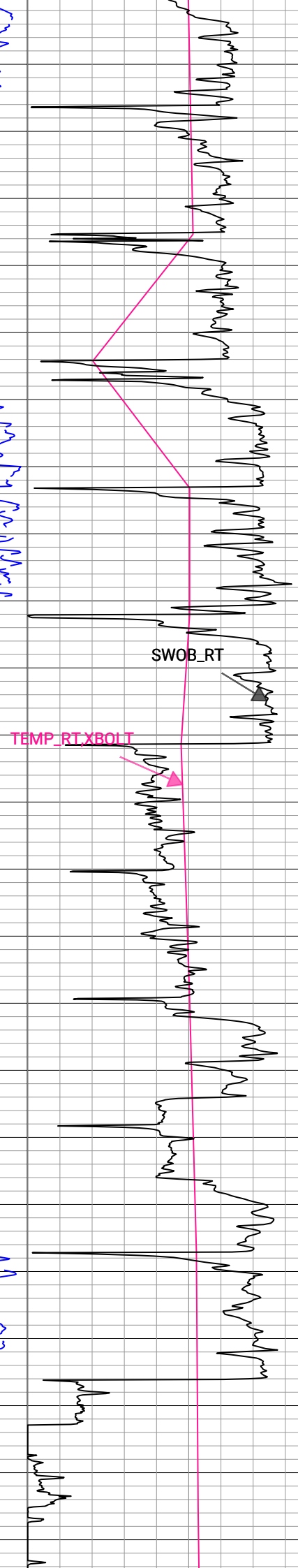
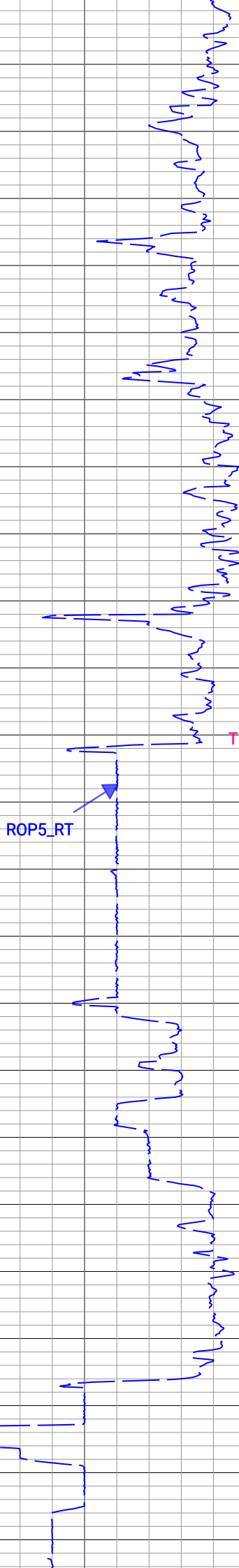


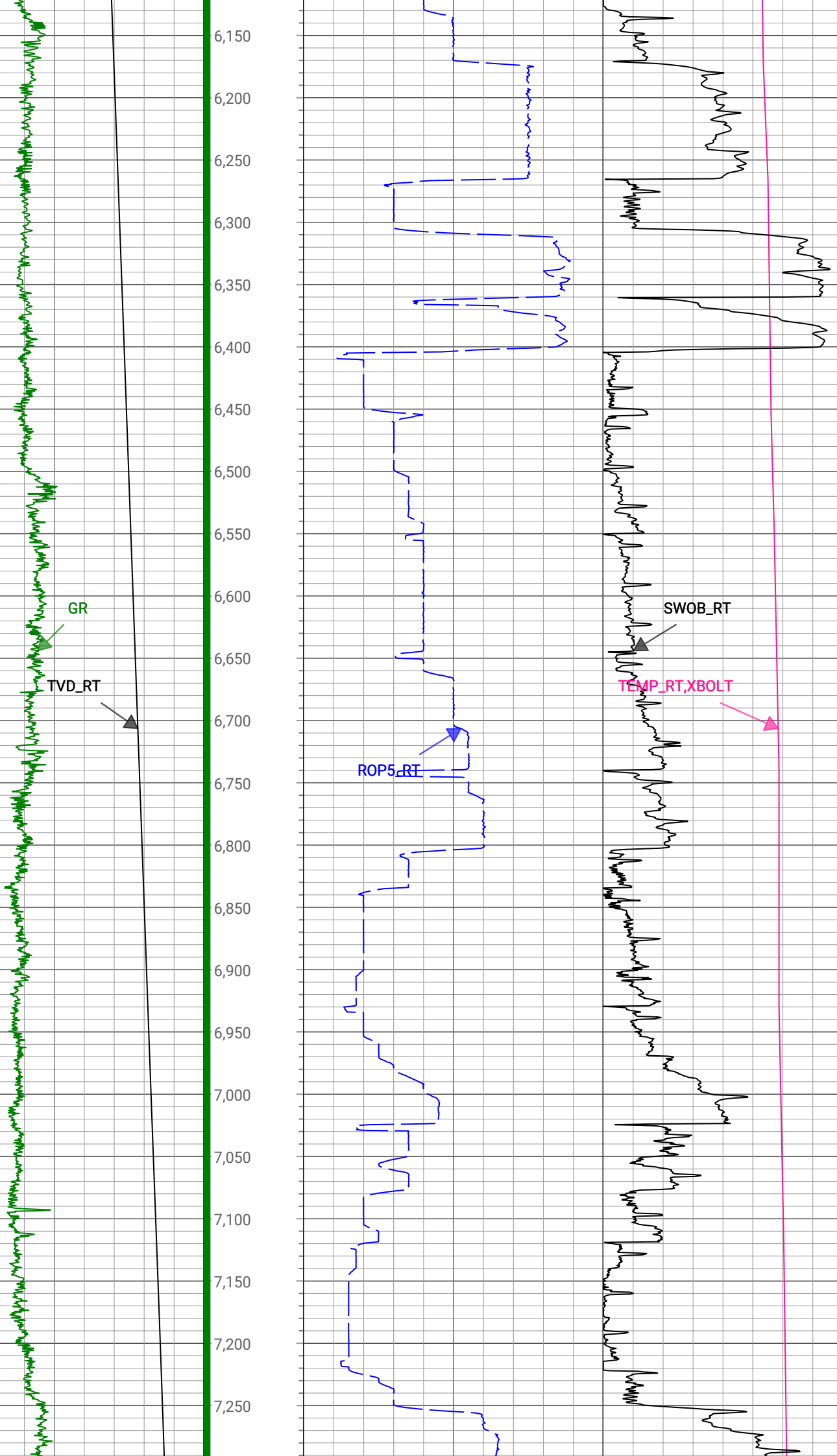


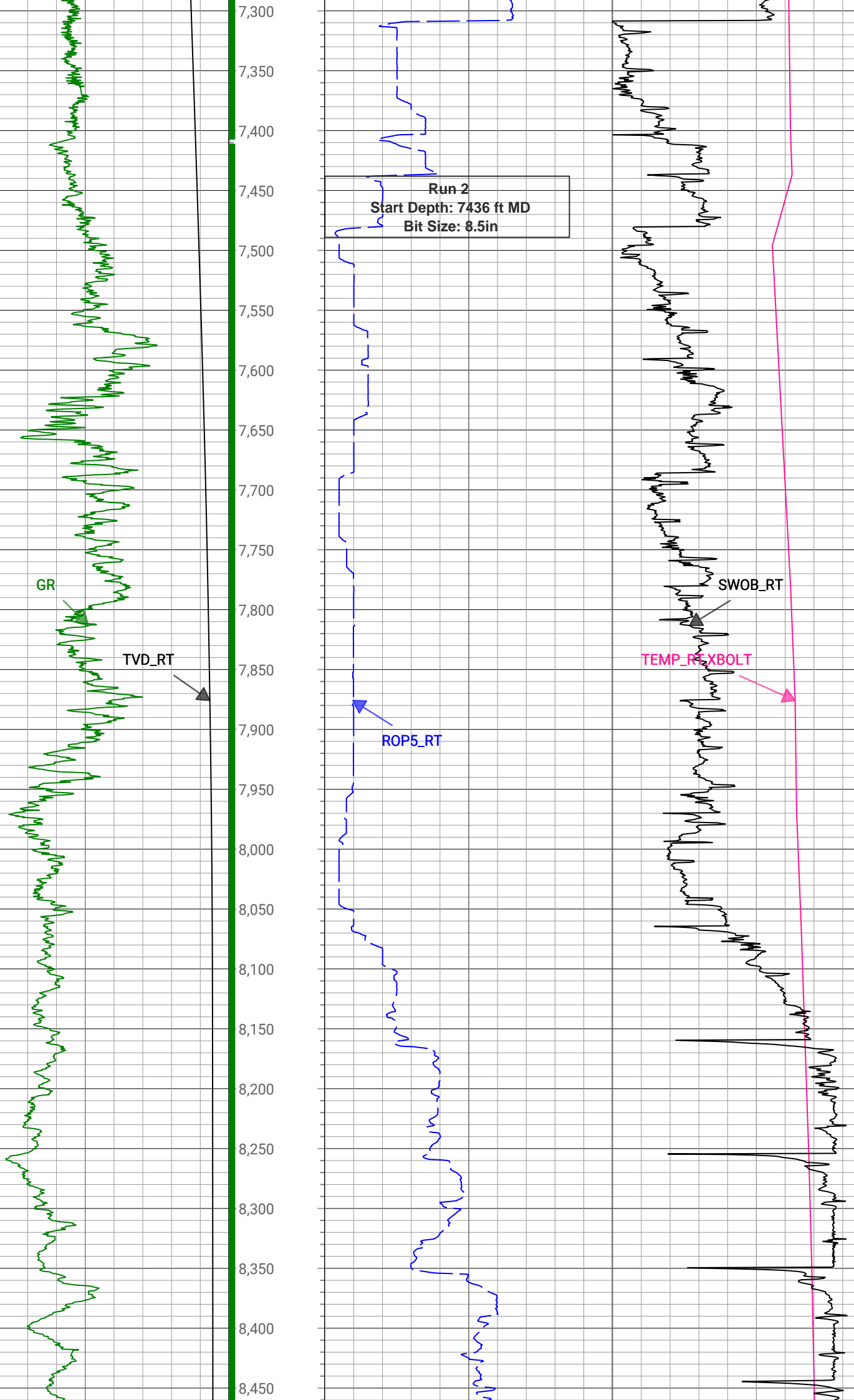


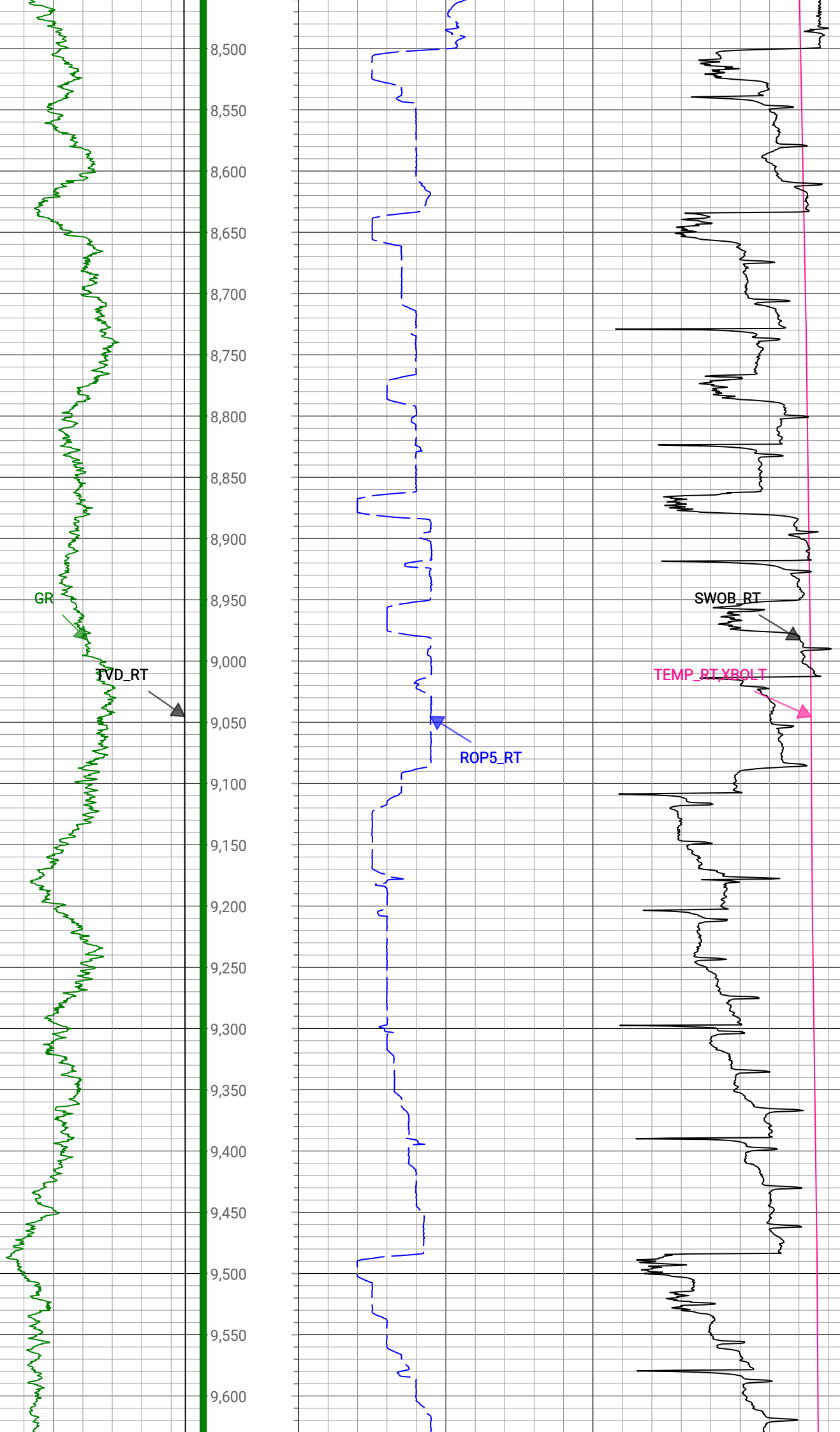


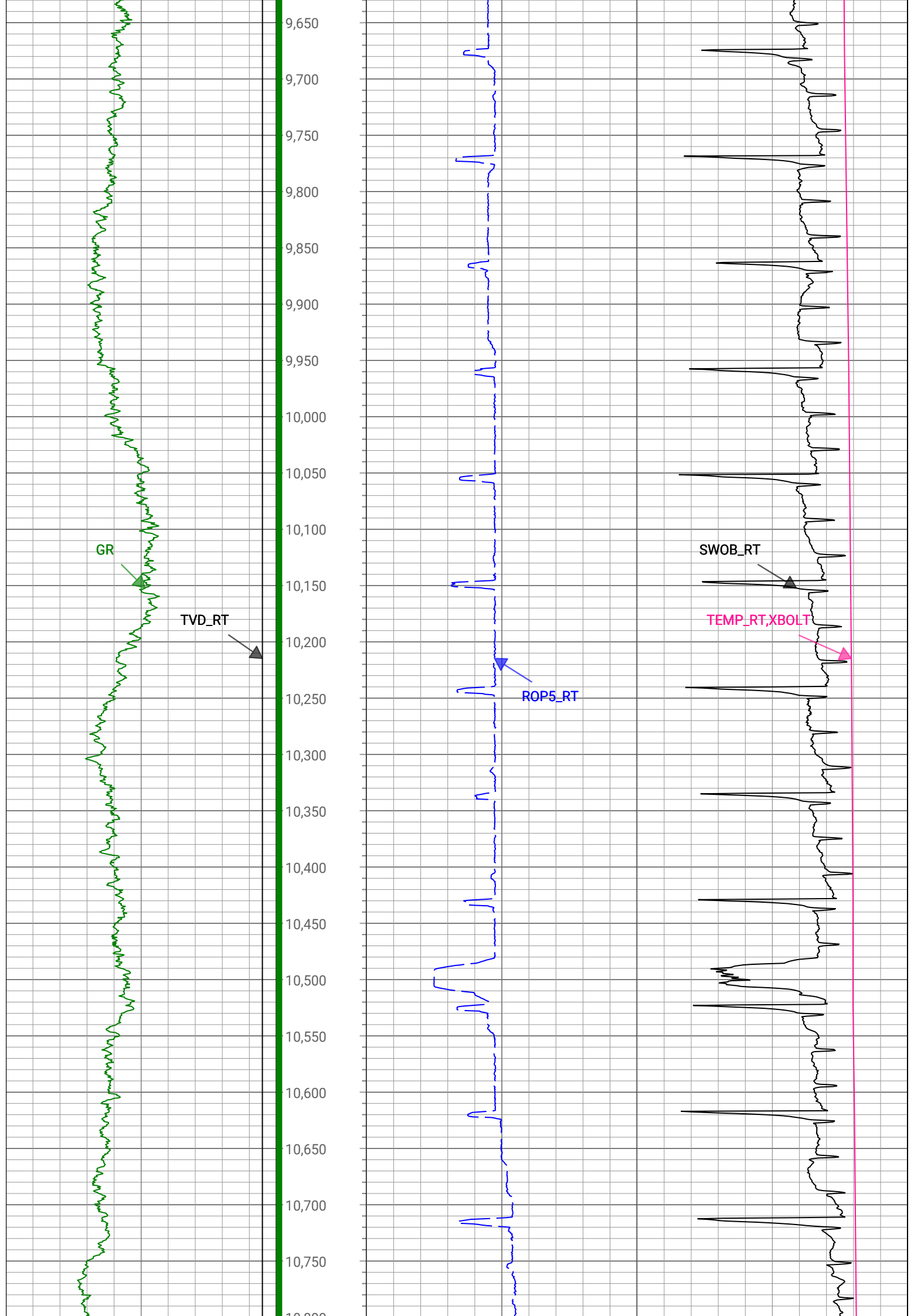
4,950
5,000
5,050
5,100
5,150
5,200
5,250
5,300
5,350
5,400
5,450
5,500
5,550
5,600
5,650
5,700
5,750
5,800
5,850
5,900
5,950
6,000
6,050
6,100

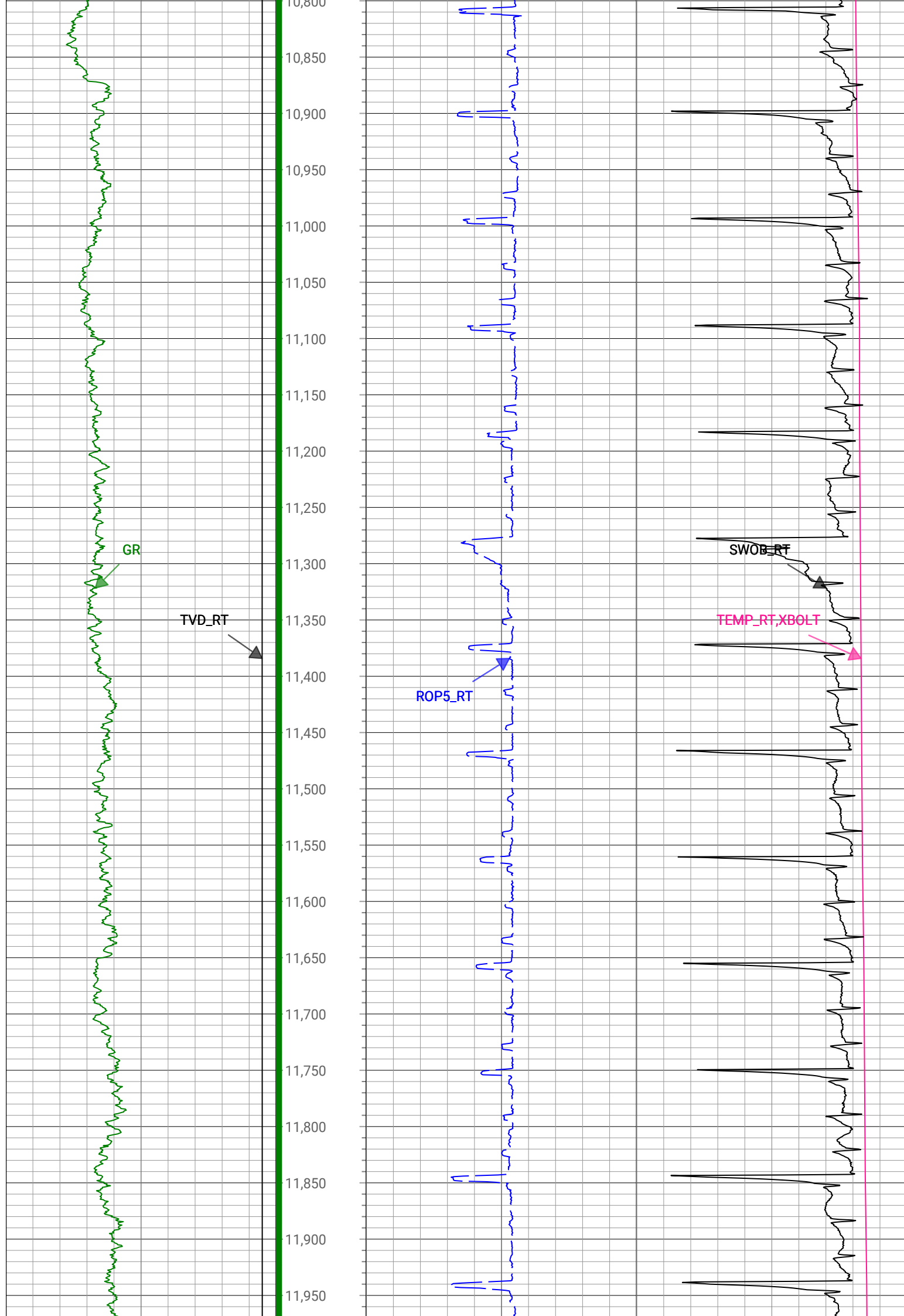


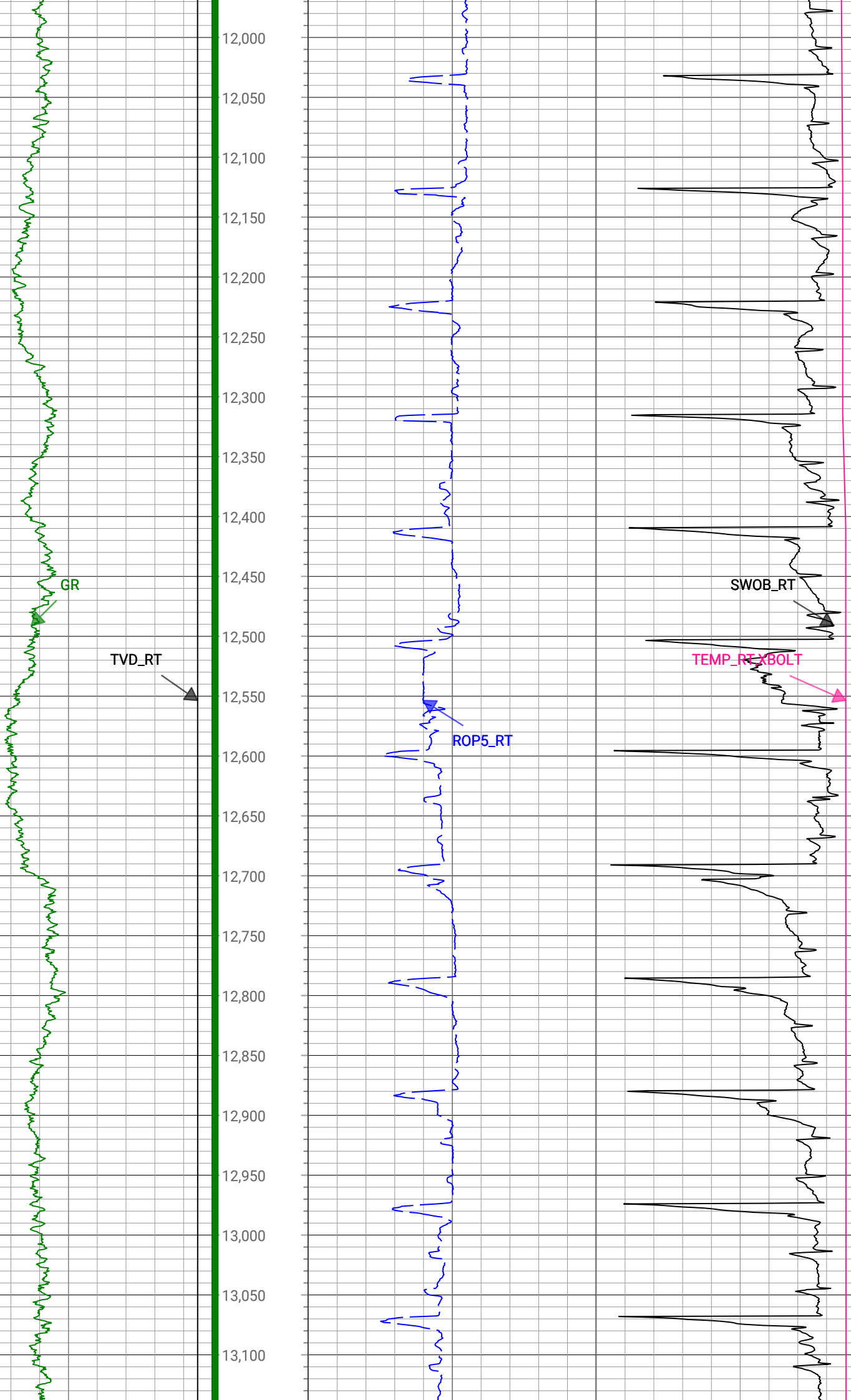


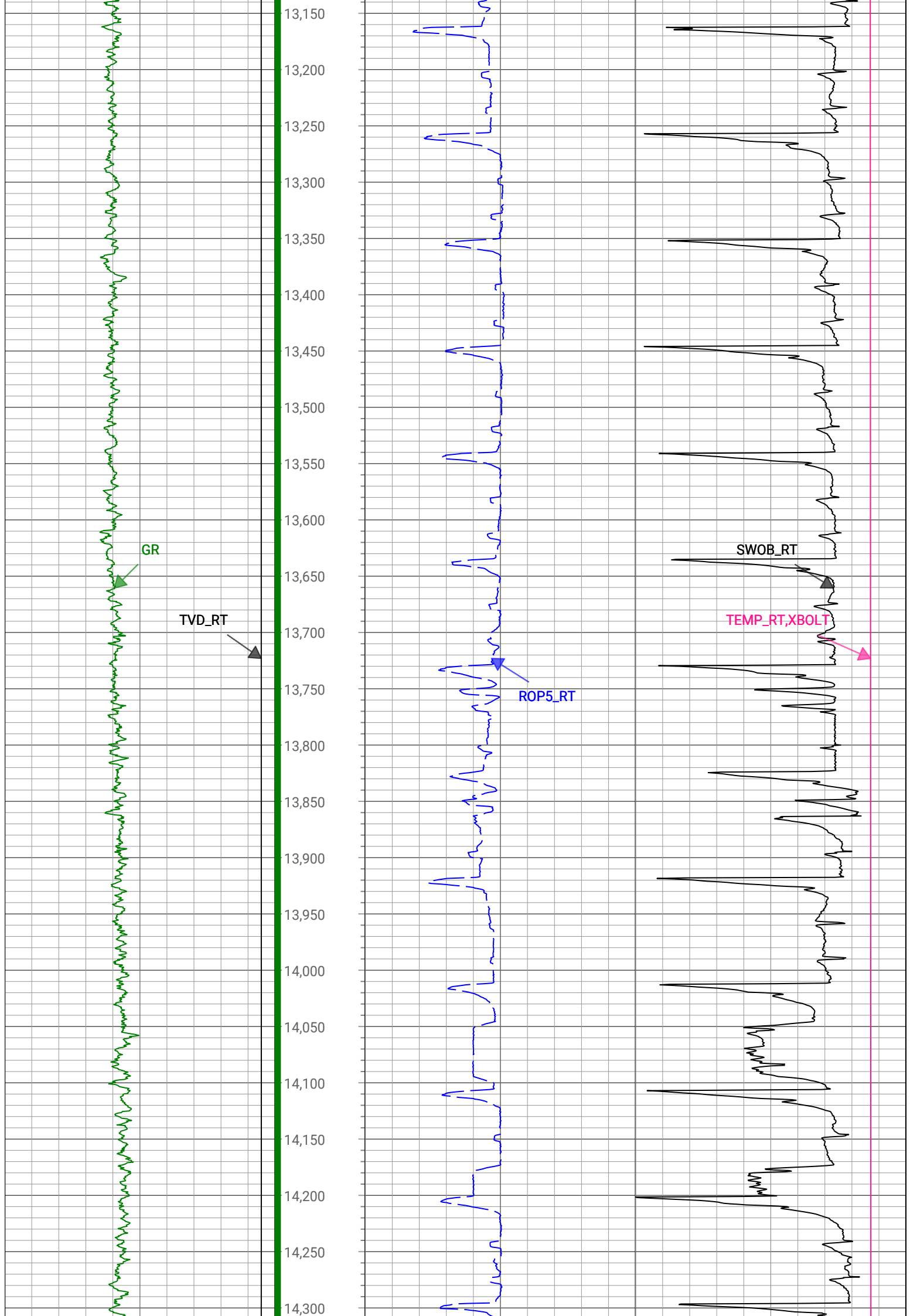


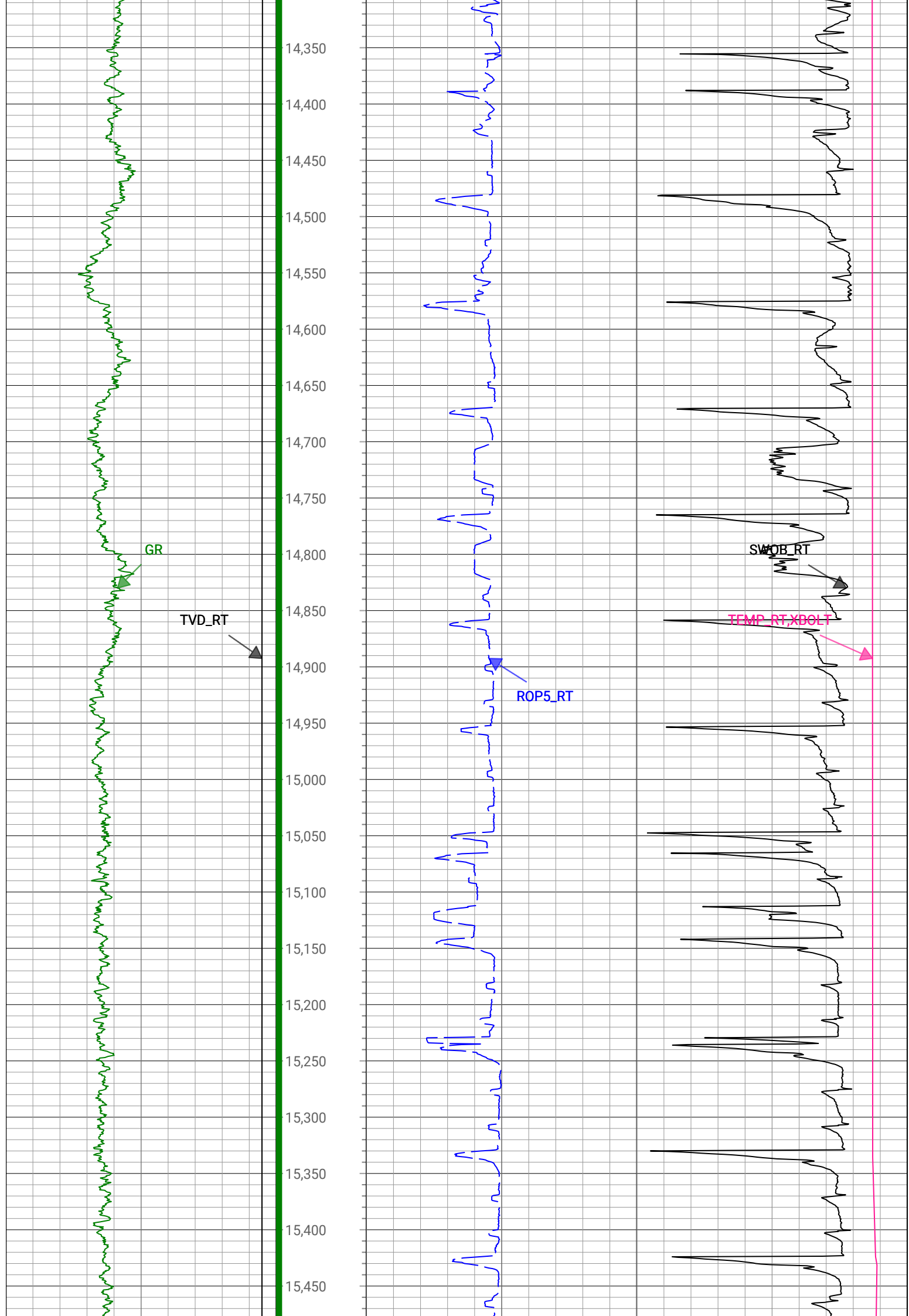


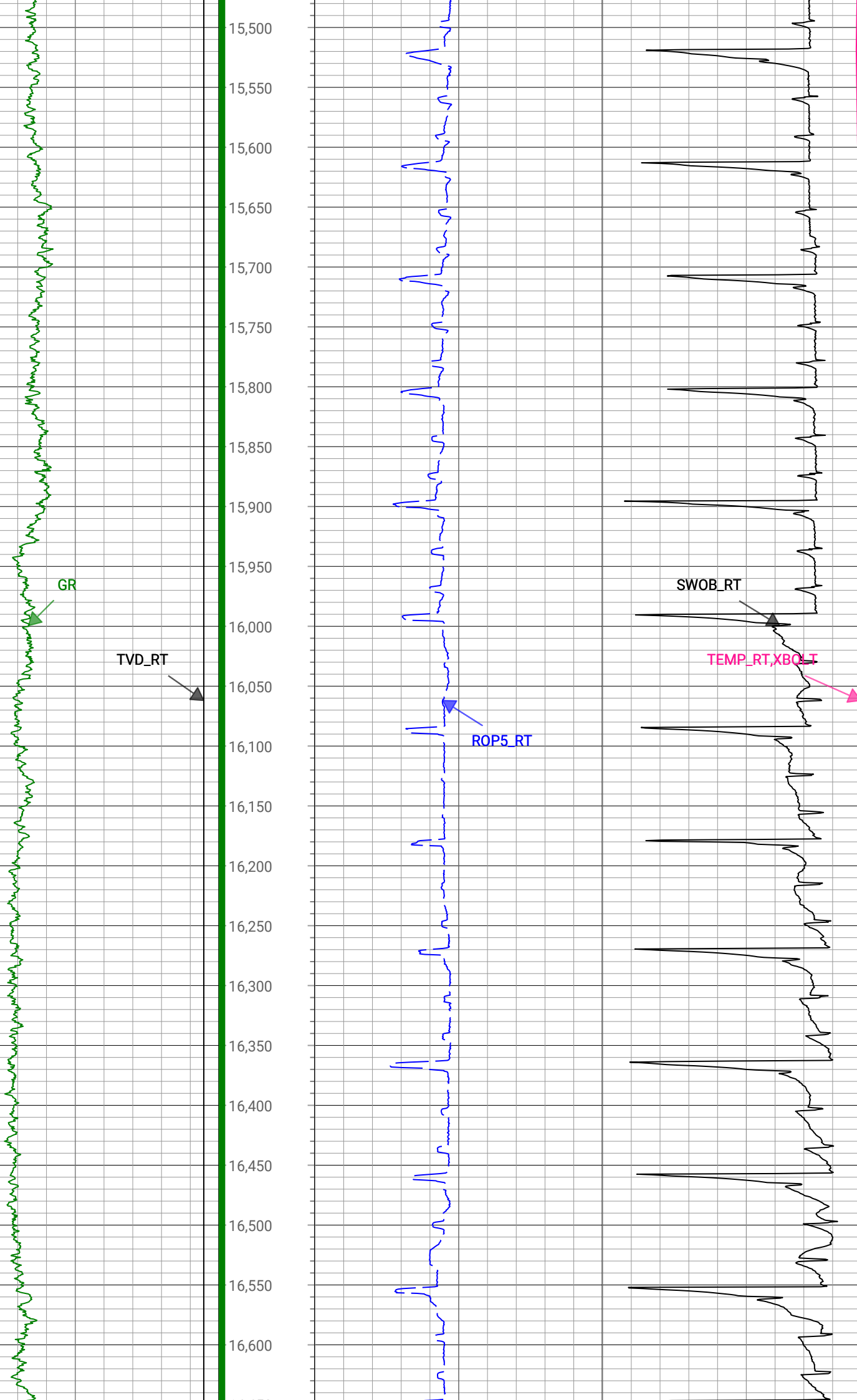


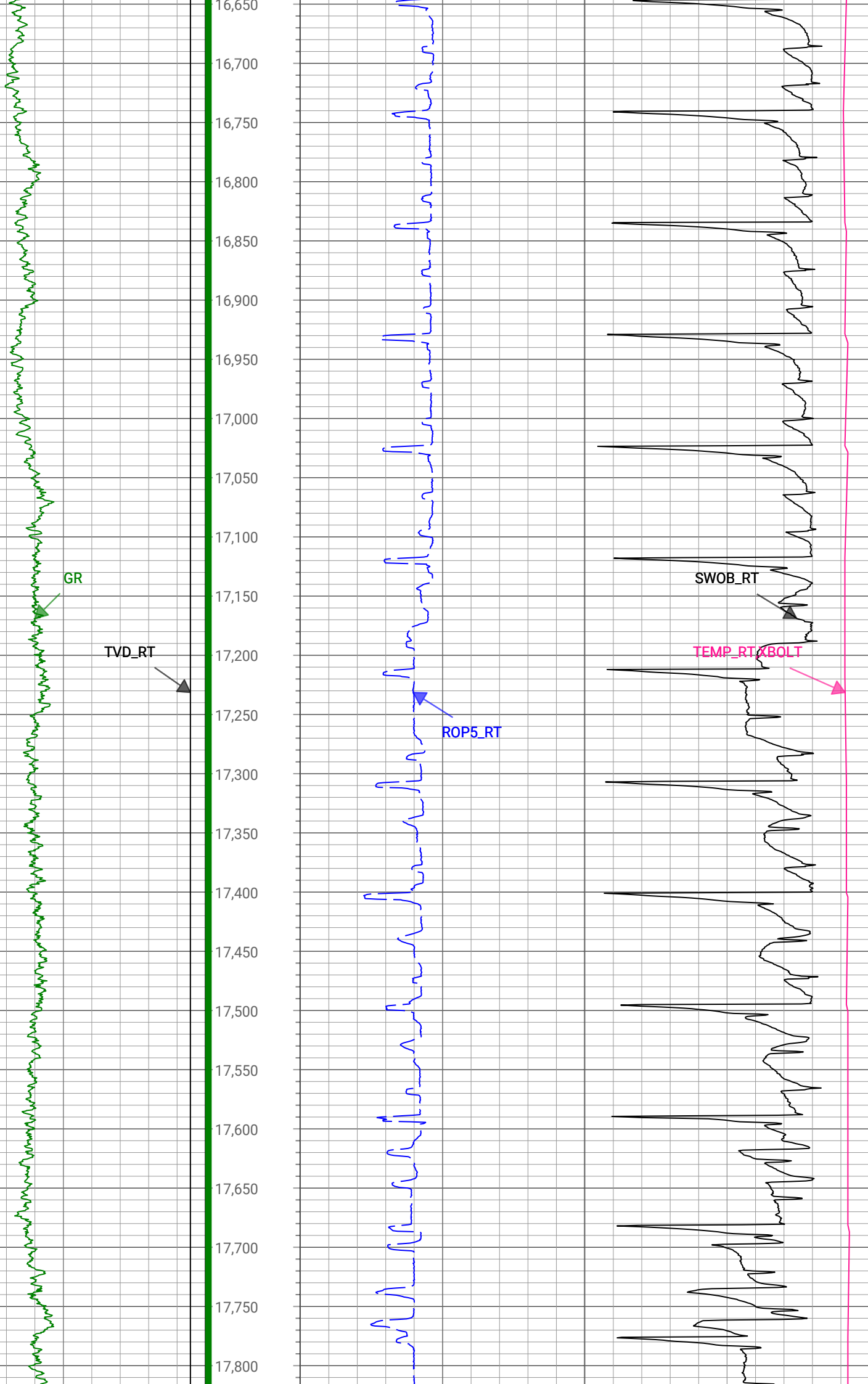


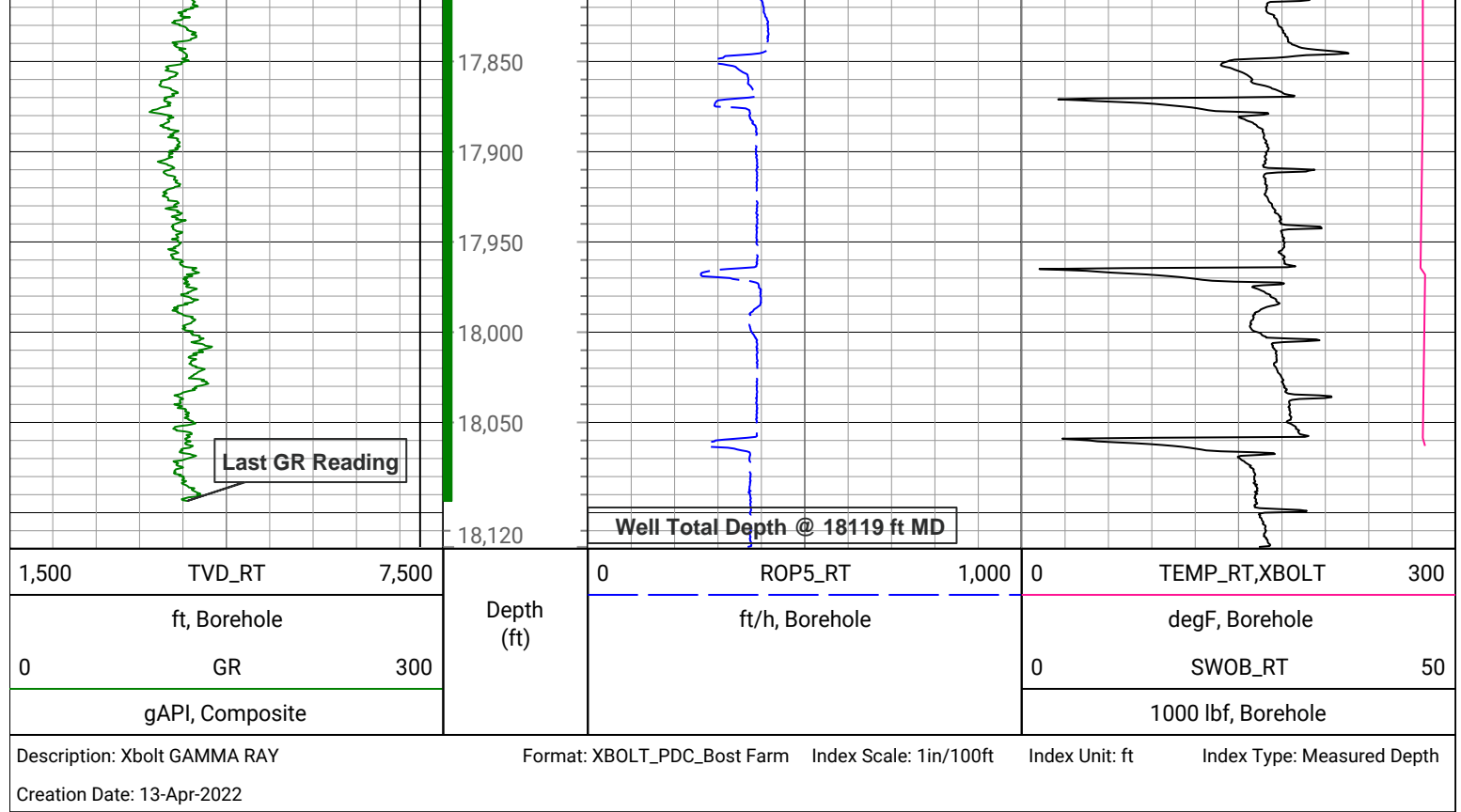












Survey Record

Survey Calculation

North Reference: True North

Tie In Point

Measured Depth: 0(ft) Inclination: 0(deg) Azimuth: 0(deg)

True Vertical Depth: 0(ft) North Displacement: 0(ft) East Displacement: 0(ft)

D&I Inits - Run - 1

Geomagnetic Model: HDGM 2022 Geomagnetic Date: 04-Apr-2022 00:00:00

Location B: 51957(nT) Location G: 999.024(mgn)

Magnetic Dip: 66.5(deg) Magnetic Dec: 7.363(deg)

Total Correction: 7.363

D&I Inits - Run - 2

Geomagnetic Model: HDGM 2022 Geomagnetic Date: 01-Apr-2022 18:00:00

Location B: 51957(nT) Location G: 999.024(mgn)

Magnetic Dip: 66.5(deg) Magnetic Dec: 7.363(deg)

Total Correction: 7.363

MD(ft)	Incl(deg)	Azim(deg)	TVD(ft)	V Sec(ft)	N/-S(ft)	E/-W(ft)	DLS (deg/100ft)	Closure Distance (ft)	Closure Azimuth (deg)	Tool Type
0	0	0	0	0.00	0	0	0.00			TIP
161.5	0.4	287.8	161.5	-0.56	0.17	-0.54	0.25	0.56	287.8	MWD
252.5	0.4	260.9	252.5	-1.17	0.22	-1.15	0.2	1.17	280.77	MWD
344.5	1.4	240.7	344.48	-2.28	-0.38	-2.45	1.12	2.48	261.15	MWD
433.5	2.8	213.9	433.42	-3.81	-2.72	-4.61	1.88	5.35	239.48	MWD
522.5	4.3	203.9	522.25	-5.1	-7.57	-7.18	1.82	10.43	223.45	MWD
612.5	6.4	206.7	611.85	-6.76	-15.14	-10.8	2.35	18.6	215.49	MWD
702.5	8.9	211.3	701.05	-9.9	-25.57	-16.67	2.86	30.52	213.1	MWD
791.5	10.2	217.8	788.81	-15.09	-37.68	-25.08	1.9	45.26	213.64	MWD
880.5	11.3	220.3	876.25	-22.09	-50.56	-35.55	1.34	61.8	215.11	MWD
970.5	12.7	218.7	964.28	-30.08	-65.01	-47.43	1.6	80.47	216.12	MWD

1059.5	14	216.9	1050.88	-38.3	-81.25	-60.02	1.53	101.01	216.45	MWD
1149.5	15.7	217.6	1137.87	-47.35	-99.61	-73.98	1.9	124.08	216.6	MWD
1238.5	18.9	219.2	1222.83	-58.24	-120.32	-90.44	3.63	150.52	216.93	MWD
1328.5	20.8	218.5	1307.48	-70.99	-144.13	-109.61	2.13	181.07	217.25	MWD
1417.5	23.1	219.4	1390.02	-84.94	-169.99	-130.53	2.61	214.32	217.52	MWD
1506.5	24.5	218.3	1471.45	-99.93	-197.96	-153.05	1.65	250.23	217.71	MWD
1595.5	24.9	218.9	1552.31	-115.31	-227.03	-176.25	0.53	287.41	217.82	MWD
1649.5	24.9	218.7	1601.29	-124.79	-244.74	-190.5	0.16	310.14	217.9	MWD
1785	23.38	219.54	1724.94	-148.15	-287.74	-225.45	1.15	365.55	218.08	Manual
1880	24.92	219.45	1811.62	-164.78	-317.74	-250.17	1.62	404.4	218.22	Manual
1974	25.03	217.1	1896.83	-180.98	-348.89	-274.75	1.06	444.08	218.22	Manual
2069	26.23	219.83	1982.49	-197.9	-381.04	-300.32	1.77	485.16	218.24	Manual
2164	25.83	217.46	2067.85	-215.18	-413.59	-326.35	1.17	526.85	218.28	Manual
2258	25.65	216.02	2152.53	-230.85	-446.3	-350.77	0.69	567.65	218.17	Manual
2353	25.88	218.66	2238.08	-247.09	-479.12	-375.82	1.23	608.93	218.11	Manual
2448	26.19	222.36	2323.45	-265.59	-510.81	-402.9	1.74	650.58	218.26	Manual
2542	26.35	221.78	2407.74	-285.06	-541.69	-430.77	0.32	692.1	218.49	Manual
2637	26.36	222.36	2492.87	-304.79	-573	-459.03	0.27	734.19	218.7	Manual
2731	26.48	222.75	2577.05	-324.68	-603.81	-487.32	0.22	775.93	218.91	Manual
2826	26.41	222.09	2662.11	-344.7	-635.04	-515.86	0.32	818.16	219.09	Manual
2920	25.84	221.9	2746.51	-364.02	-665.8	-543.55	0.61	859.5	219.23	Manual
3015	25.74	221.09	2832.04	-383	-696.76	-570.93	0.39	900.8	219.33	Manual
3110	25.72	219.91	2917.62	-401.29	-728.12	-597.72	0.54	942.03	219.38	Manual
3205	25.42	220.22	3003.32	-419.2	-759.5	-624.11	0.35	983.03	219.41	Manual
3299	25.36	219.89	3088.24	-436.79	-790.35	-650.05	0.16	1023.33	219.44	Manual
3395	25.36	219.51	3174.99	-454.51	-821.98	-676.31	0.17	1064.45	219.45	Manual
3489	25.3	219.72	3259.95	-471.79	-852.96	-701.95	0.11	1104.67	219.45	Manual
3584	25.1	220.03	3345.91	-489.33	-884.01	-727.89	0.25	1145.11	219.47	Manual
3679	24.99	216.95	3431.98	-505.89	-915.47	-752.91	1.38	1185.31	219.43	Manual
3773	25.02	216.57	3517.17	-521.16	-947.3	-776.69	0.17	1225	219.35	Manual
3868	25.09	216.51	3603.23	-536.47	-979.63	-800.64	0.08	1265.19	219.26	Manual
3963	25.47	211.45	3689.14	-550.19	-1013.25	-823.29	2.31	1305.55	219.09	Manual
4057	25.35	212.67	3774.05	-562.58	-1047.43	-844.69	0.57	1345.59	218.88	Manual
4152	25.32	220.36	3859.94	-578.01	-1080.04	-868.83	3.46	1386.13	218.81	Manual
4246	25.03	219.47	3945.01	-595.37	-1110.71	-894.49	0.51	1426.11	218.85	Manual
4435	25.22	221.8	4116.13	-631.14	-1171.59	-946.75	0.53	1506.3	218.94	Manual
4530	25.04	223.67	4202.14	-650.42	-1201.22	-974.12	0.86	1546.56	219.04	Manual
4720	25.26	222.58	4374.13	-689.51	-1260.15	-1029.31	0.27	1627.11	219.24	Manual
4815	25.32	222.33	4460.02	-708.74	-1290.1	-1056.71	0.13	1667.63	219.32	Manual
4909	25.13	219.12	4545.06	-726.65	-1320.44	-1082.84	1.47	1707.66	219.35	Manual
5099	25.1	218.55	4717.1	-760.3	-1383.26	-1133.41	0.13	1788.3	219.33	Manual
5194	25.46	211.47	4803.02	-774.69	-1416.44	-1156.63	3.2	1828.69	219.23	Manual
5288	24.71	217.32	4888.17	-788.43	-1449.31	-1179.09	2.76	1868.35	219.13	Manual
5383	24.9	214.72	4974.41	-803.26	-1481.54	-1202.52	1.17	1908.14	219.07	Manual
5478	23.48	212.03	5061.07	-816.08	-1514.02	-1223.95	1.89	1946.87	218.95	Manual
5572	24.63	218.12	5146.91	-829.78	-1545.31	-1245.98	2.91	1985.06	218.88	Manual
5667	24.55	213.67	5233.31	-844.4	-1577.31	-1269.14	1.95	2024.51	218.82	Manual
5762	25.47	216.06	5319.4	-858.61	-1610.25	-1292.11	1.44	2064.57	218.74	Manual
5856	25.71	219.26	5404.18	-874.79	-1642.38	-1316.91	1.49	2105.15	218.72	Manual
5951	22.39	219.4	5490.02	-891.24	-1672.22	-1341.44	2.5	2142.86	218.72	Manual

10868	90.04	89.6	7189.35	2296.96	-2341.57	1777.83	0.18	2940.01	142.79	Manual
10962	90.34	89.91	7189.04	2388	-2341.17	1871.83	0.46	2997.47	141.36	Manual
11057	89.91	89.99	7188.83	2480.09	-2341.09	1966.83	0.46	3057.63	139.97	Manual
11152	90.24	89.47	7188.71	2572.08	-2340.64	2061.83	0.65	3119.25	138.62	Manual
11246	90.17	89.12	7188.37	2662.93	-2339.48	2155.82	0.38	3181.31	137.34	Manual
11340	90.11	89.7	7188.14	2753.83	-2338.52	2249.82	0.62	3245.05	136.11	Manual
11435	89.74	89.85	7188.27	2845.85	-2338.14	2344.82	0.42	3311.35	134.92	Manual
11529	89.77	89.75	7188.67	2936.91	-2337.81	2438.81	0.11	3378.34	133.79	Manual
11624	89.87	89.63	7188.97	3028.89	-2337.3	2533.81	0.16	3447.2	132.69	Manual
11718	89.78	89.82	7189.25	3119.92	-2336.85	2627.81	0.22	3516.57	131.65	Manual
11812	89.66	90.17	7189.71	3211.05	-2336.84	2721.81	0.39	3587.35	130.65	Manual
11906	89.73	90.04	7190.21	3302.23	-2337.01	2815.81	0.16	3659.29	129.69	Manual
12000	89.87	89.9	7190.54	3393.36	-2336.96	2909.81	0.21	3732.07	128.77	Manual
12094	89.71	89.96	7190.89	3484.47	-2336.85	3003.81	0.18	3805.75	127.88	Manual
12188	89.69	89.93	7191.38	3575.59	-2336.76	3097.8	0.04	3880.31	127.03	Manual
12283	89.67	90.06	7191.91	3667.69	-2336.75	3192.8	0.14	3956.56	126.2	Manual
12377	90.38	89.73	7191.87	3758.79	-2336.58	3286.8	0.83	4032.7	125.41	Manual
12469	89.65	90.16	7191.84	3847.97	-2336.49	3378.8	0.92	4107.98	124.66	Manual
12563	89.93	89.85	7192.19	3939.11	-2336.5	3472.8	0.44	4185.64	123.93	Manual
12752	89.72	89.46	7192.76	4122.08	-2335.36	3661.8	0.23	4343.12	122.53	Manual
12846	89.7	89.2	7193.24	4212.94	-2334.26	3755.79	0.28	4422.07	121.86	Manual
12941	90.28	89.42	7193.26	4304.76	-2333.12	3850.78	0.65	4502.44	121.21	Manual
13035	90.45	88.05	7192.66	4395.37	-2331.04	3944.75	1.47	4582.01	120.58	Manual
13129	90.11	89.33	7192.2	4485.95	-2328.89	4038.73	1.41	4662.09	119.97	Manual
13223	89.94	88.81	7192.16	4576.71	-2327.37	4132.71	0.58	4742.99	119.39	Manual
13317	89.74	89.14	7192.42	4667.42	-2325.69	4226.7	0.41	4824.29	118.82	Manual
13412	89.9	88.79	7192.72	4759.1	-2323.97	4321.68	0.41	4906.91	118.27	Manual
13507	89.98	89.34	7192.82	4850.81	-2322.42	4416.67	0.59	4990.05	117.74	Manual
13601	90	89.26	7192.83	4941.67	-2321.27	4510.66	0.09	5072.91	117.23	Manual
13695	89.73	89.66	7193.06	5032.58	-2320.39	4604.66	0.51	5156.26	116.74	Manual
13790	89.82	89.92	7193.43	5124.61	-2320.04	4699.66	0.29	5241.12	116.27	Manual
13884	89.8	89.56	7193.74	5215.64	-2319.61	4793.65	0.38	5325.38	115.82	Manual
13978	89.83	88.68	7194.04	5306.41	-2318.17	4887.64	0.94	5409.52	115.37	Manual
14072	89.83	89.16	7194.32	5397.1	-2316.4	4981.62	0.51	5493.84	114.94	Manual
14167	90.14	88.6	7194.35	5488.74	-2314.54	5076.61	0.67	5579.34	114.51	Manual
14262	90.77	89.25	7193.59	5580.39	-2312.76	5171.58	0.95	5665.17	114.09	Manual
14356	91	88.79	7192.14	5671.12	-2311.15	5265.56	0.55	5750.44	113.7	Manual
14451	90.95	88.84	7190.53	5762.71	-2309.18	5360.53	0.07	5836.74	113.31	Manual
14545	91.35	88.65	7188.64	5853.31	-2307.13	5454.48	0.47	5922.35	112.93	Manual
14639	90.93	89.12	7186.77	5943.96	-2305.3	5548.45	0.67	6008.3	112.56	Manual
14733	91.1	89.05	7185.1	6034.71	-2303.8	5642.42	0.2	6094.62	112.21	Manual
14827	91.11	89.43	7183.29	6125.52	-2302.55	5736.39	0.4	6181.26	111.87	Manual
14921	90.26	89.77	7182.17	6216.49	-2301.89	5830.38	0.97	6268.34	111.54	Manual
15016	89.83	89.81	7182.09	6308.51	-2301.55	5925.38	0.45	6356.67	111.23	Manual
15110	89.84	89.62	7182.36	6399.54	-2301.08	6019.38	0.2	6444.22	110.92	Manual
15204	90.14	89.52	7182.38	6490.5	-2300.37	6113.38	0.34	6531.85	110.62	Manual
15298	89.91	89.73	7182.34	6581.49	-2299.76	6207.38	0.33	6619.7	110.33	Manual
15392	90.34	89.39	7182.13	6672.45	-2299.04	6301.37	0.58	6707.67	110.04	Manual
15486	90.02	89.75	7181.84	6763.41	-2298.33	6395.37	0.51	6795.81	109.77	Manual
15580	89.88	89.89	7181.92	6854.48	-2298.03	6489.37	0.21	6884.25	109.5	Manual

15675	90.11	89.69	7181.93	6946.5	-2297.69	6584.37	0.32	6973.76	109.24	Manual
15769	90.03	89.81	7181.81	7037.54	-2297.28	6678.37	0.15	7062.44	108.98	Manual
15863	89.92	89.85	7181.85	7128.61	-2297	6772.37	0.12	7151.3	108.74	Manual
15957	90.14	89.4	7181.81	7219.6	-2296.38	6866.36	0.53	7240.19	108.49	Manual
16051	89.82	90.05	7181.84	7310.63	-2295.93	6960.36	0.77	7329.25	108.26	Manual
16145	90.08	89.62	7181.92	7401.7	-2295.66	7054.36	0.53	7418.5	108.03	Manual
16239	90.05	89.76	7181.81	7492.71	-2295.15	7148.36	0.15	7507.78	107.8	Manual
16333	90.05	89.73	7181.73	7583.75	-2294.73	7242.36	0.03	7597.21	107.58	Manual
16427	90.2	89.87	7181.53	7674.81	-2294.41	7336.36	0.22	7686.77	107.37	Manual
16521	90.24	89.46	7181.17	7765.81	-2293.86	7430.36	0.44	7776.37	107.16	Manual
16615	89.88	90.03	7181.07	7856.85	-2293.44	7524.35	0.72	7866.12	106.95	Manual
16709	90.23	89.96	7180.98	7947.99	-2293.43	7618.35	0.38	7956.08	106.75	Manual
16803	90.03	89.49	7180.76	8039.01	-2292.98	7712.35	0.54	8046	106.56	Manual
16897	89.74	89.73	7180.95	8130	-2292.34	7806.35	0.4	8135.96	106.36	Manual
16991	90.05	89.66	7181.12	8221.01	-2291.84	7900.35	0.34	8226.06	106.18	Manual
17085	90.31	89.52	7180.83	8311.98	-2291.17	7994.35	0.31	8316.19	105.99	Manual
17180	90.01	90.08	7180.56	8404.01	-2290.83	8089.34	0.67	8407.46	105.81	Manual
17274	90.21	89.48	7180.38	8495.06	-2290.47	8183.34	0.67	8497.84	105.64	Manual
17368	90.01	89.78	7180.2	8586.05	-2289.87	8277.34	0.38	8588.24	105.46	Manual
17462	89.99	89.57	7180.2	8677.06	-2289.33	8371.34	0.22	8678.73	105.29	Manual
17556	90.1	89.8	7180.13	8768.07	-2288.82	8465.34	0.27	8769.3	105.13	Manual
17650	90.11	89.55	7179.96	8859.08	-2288.28	8559.34	0.27	8859.94	104.97	Manual
17745	89.71	89.79	7180.11	8951.05	-2287.74	8654.33	0.49	8951.6	104.81	Manual
17840	89.88	90.01	7180.45	9043.12	-2287.57	8749.33	0.29	9043.44	104.65	Manual
17934	90.18	89.7	7180.4	9134.2	-2287.33	8843.33	0.46	9134.35	104.5	Manual
18028	90.03	89.59	7180.22	9225.2	-2286.75	8937.33	0.2	9225.24	104.35	Manual
18119	90.03	89.59	7180.18	9313.27	-2286.1	9028.33	0	9313.27	104.21	Manual

Company:

PDC Energy Inc

Well:

Bost Farm 16N-8B-L

Field Name:

Wattenberg

Country Name:


United States

State Name:

Colorado

County Name:

Weld



Xbolt GAMMA RAY

1 in/100ft Measured Depth

Final Print

Recorded Mode