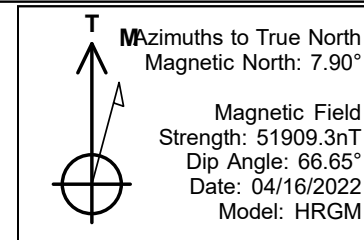


# PDC Energy Inc. DJ Basin

Bost Farm 16N-8A-L  
 Bost Farms 5-7 Pad SEC.7-T5N-R66W  
 North American Datum 1983 , US State Plane 1983, Colorado Northern Zone  
 Ground Elevation: 4874.0  
 +N/-S +E/-W Northing Easting Latitude Longitude Slot  
 0.0 0.0 1394603.42 3187016.62 40.414644 -104.828360  
 Patterson 272 - RKB 28WELL @ 4902ft (Patterson 272 - RKB 28')



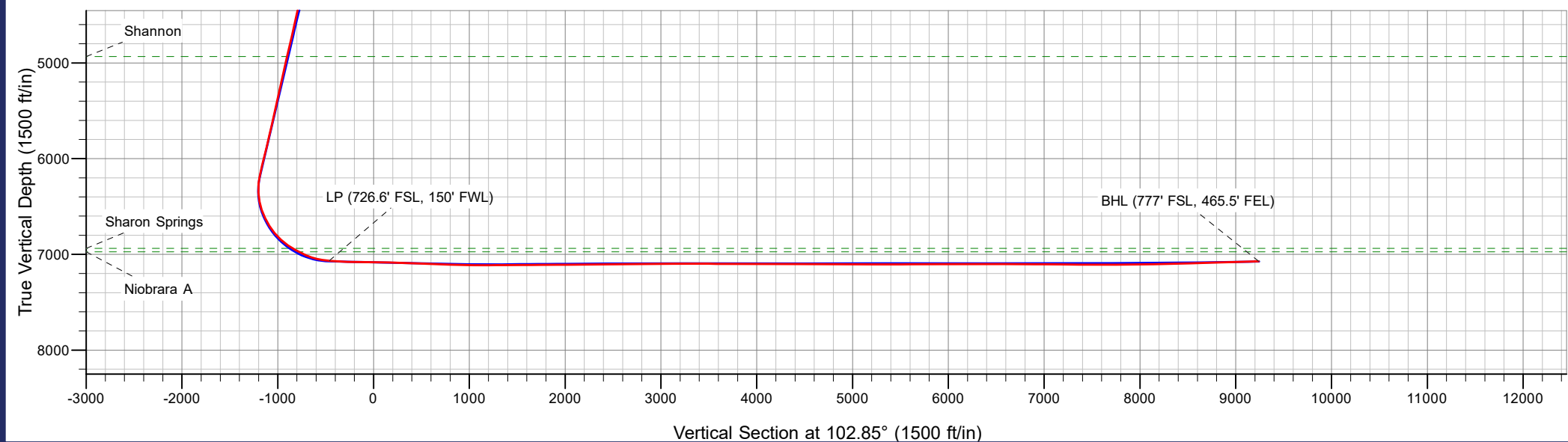
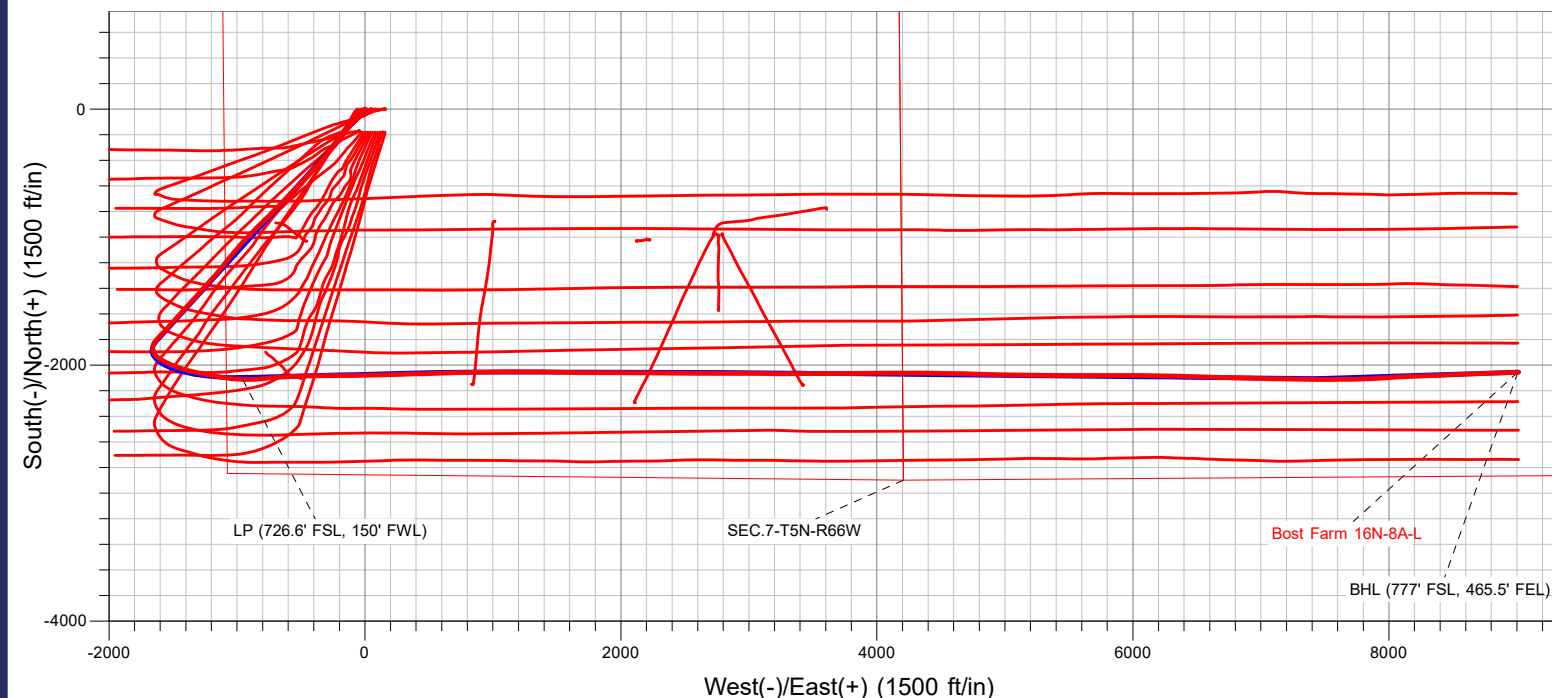
Bost Farms 5-7 Pad SEC.7-T5N-R66W  
 Bost Farm 16N-8A-L  
 16N-8A-L Final Surveys  
 13:57, May 16 2022



## ANNOTATIONS

MD	TVD	Annotation
8027.7	7066.4	LP (726.6' FSL, 150' FWL)
17995.0	7071.6	BHL (777' FSL, 465.5' FEL)

**FINAL SURVEY**  
**Projected Bottom Hole Location**  
**17995' MD / 7071.6' TVD**  
**91.82° INC / 87.57° AZM**  
**777' FSL / 465.5' FEL**





# **PDC Energy Inc. DJ Basin**

**SEC.7-T5N-R66W**

**Bost Farms 5-7 Pad SEC.7-T5N-R66W**

**Bost Farm 16N-8A-L**

**Bost Farm 16N-8A-L Wellbore #1**

**Survey: Surface**

## **Standard Survey Report**

**16 May, 2022**

<b>Company:</b>	PDC Energy Inc. DJ Basin	<b>Local Co-ordinate Reference:</b>	Well Bost Farm 16N-8A-L
<b>Project:</b>	SEC.7-T5N-R66W	<b>TVD Reference:</b>	WELL @ 4902ft (Patterson 272 - RKB 28')
<b>Site:</b>	Bost Farms 5-7 Pad SEC.7-T5N-R66W	<b>MD Reference:</b>	WELL @ 4902ft (Patterson 272 - RKB 28')
<b>Well:</b>	Bost Farm 16N-8A-L	<b>North Reference:</b>	True
<b>Wellbore:</b>	Bost Farm 16N-8A-L Wellbore #1	<b>Survey Calculation Method:</b>	Minimum Curvature
<b>Design:</b>	16N-8A-L_Final Surveys	<b>Database:</b>	US_EDM

<b>Project</b>	SEC.7-T5N-R66W, Weld County, Co		
<b>Map System:</b>	US State Plane 1983	<b>System Datum:</b>	Mean Sea Level
<b>Geo Datum:</b>	North American Datum 1983		
<b>Map Zone:</b>	Colorado Northern Zone		Using geodetic scale factor

<b>Site</b>	Bost Farms 5-7 Pad SEC.7-T5N-R66W		
<b>Site Position:</b>		<b>Northing:</b>	1,394,603.55 usft
<b>From:</b>	Lat/Long	<b>Easting:</b>	3,187,178.01 usft
<b>Position Uncertainty:</b>	0.0 ft	<b>Slot Radius:</b>	13-3/16 "
		<b>Latitude:</b>	40.414641
		<b>Longitude:</b>	-104.827780
		<b>Grid Convergence:</b>	0.43 °

<b>Well</b>	Bost Farm 16N-8A-L		
<b>Well Position</b>	<b>+N/-S</b>	0.0 ft	<b>Northing:</b>
	<b>+E/-W</b>	0.0 ft	<b>Easting:</b>
<b>Position Uncertainty</b>	0.0 ft	<b>Wellhead Elevation:</b>	ft
		<b>Latitude:</b>	40.414644
		<b>Longitude:</b>	-104.828360
		<b>Ground Level:</b>	4,874.0 ft

<b>Wellbore</b>	Bost Farm 16N-8A-L Wellbore #1				
Magnetics	Model Name	Sample Date	Declination (°)	Dip Angle (°)	Field Strength (nT)
	HRGM	04/16/2022	7.90	66.65	51,909.30481442

<b>Design</b>	16N-8A-L_Final Surveys				
<b>Audit Notes:</b>					
<b>Version:</b>	1.0	<b>Phase:</b>	ACTUAL	<b>Tie On Depth:</b>	0.0
Vertical Section:	Depth From (TVD) (ft)	+N/-S (ft)	+E/-W (ft)	Direction (°)	
	0.0	0.0	0.0	102.85	

<b>Survey Program</b>	Date 05/16/2022				
From (ft)	To (ft)	Survey (Wellbore)	Tool Name	Description	
161.5	17,995.0	Surface (Bost Farm 16N-8A-L Wellbore #1	MWD	MWD - Standard	

<b>Survey</b>									
Measured Depth (ft)	Inclination (°)	Azimuth (°)	Vertical Depth (ft)	+N/-S (ft)	+E/-W (ft)	Vertical Section (ft)	Dogleg Rate (°/100usft)	Build Rate (°/100usft)	Turn Rate (°/100usft)
0.0	0.00	0.00	0.0	0.0	0.0	0.0	0.00	0.00	0.00
161.5	0.40	136.20	161.5	-0.4	0.4	0.5	0.25	0.25	0.00
252.5	0.30	169.60	252.5	-0.9	0.7	0.8	0.24	-0.11	36.70
344.5	0.40	247.30	344.5	-1.2	0.4	0.7	0.48	0.11	84.46
433.5	0.40	248.60	433.5	-1.5	-0.2	0.2	0.01	0.00	1.46
522.5	2.50	221.90	522.5	-3.0	-1.8	-1.0	2.42	2.36	-30.00
612.5	4.60	219.60	612.3	-7.3	-5.4	-3.6	2.34	2.33	-2.56
702.5	6.40	215.70	701.9	-14.1	-10.6	-7.2	2.04	2.00	-4.33
788.9	8.34	221.17	787.5	-22.7	-17.5	-12.0	2.39	2.25	6.34
<b>Fox Hills Aq Base</b>									
791.5	8.40	221.30	790.1	-23.0	-17.8	-12.2	2.39	2.28	4.83

<b>Company:</b>	PDC Energy Inc. DJ Basin	<b>Local Co-ordinate Reference:</b>	Well Bost Farm 16N-8A-L
<b>Project:</b>	SEC.7-T5N-R66W	<b>TVD Reference:</b>	WELL @ 4902ft (Patterson 272 - RKB 28')
<b>Site:</b>	Bost Farms 5-7 Pad SEC.7-T5N-R66W	<b>MD Reference:</b>	WELL @ 4902ft (Patterson 272 - RKB 28')
<b>Well:</b>	Bost Farm 16N-8A-L	<b>North Reference:</b>	True
<b>Wellbore:</b>	Bost Farm 16N-8A-L Wellbore #1	<b>Survey Calculation Method:</b>	Minimum Curvature
<b>Design:</b>	16N-8A-L_Final Surveys	<b>Database:</b>	US_EDM

Survey									
Measured Depth (ft)	Inclination (°)	Azimuth (°)	Vertical Depth (ft)	+N/-S (ft)	+E/-W (ft)	Vertical Section (ft)	Dogleg Rate (°/100usft)	Build Rate (°/100usft)	Turn Rate (°/100usft)
880.5	9.90	221.00	878.0	-33.7	-27.1	-18.9	1.69	1.69	-0.34
970.5	10.90	221.10	966.5	-45.9	-37.8	-26.6	1.11	1.11	0.11
1,059.5	12.40	224.80	1,053.7	-59.1	-50.0	-35.6	1.88	1.69	4.16
1,149.5	13.60	222.90	1,141.4	-73.7	-64.0	-46.1	1.42	1.33	-2.11
1,238.5	16.30	224.30	1,227.3	-90.3	-79.9	-57.8	3.06	3.03	1.57
1,328.5	18.20	222.50	1,313.3	-109.7	-98.2	-71.4	2.19	2.11	-2.00
1,417.5	20.90	220.80	1,397.2	-132.0	-118.0	-85.7	3.10	3.03	-1.91
1,506.5	21.90	220.10	1,480.0	-156.7	-139.0	-100.7	1.16	1.12	-0.79
1,650.5	22.20	218.70	1,613.5	-198.4	-173.4	-124.9	0.42	0.21	-0.97
1,784.0	20.09	215.36	1,738.0	-236.8	-202.4	-144.6	1.82	-1.58	-2.50
1,879.0	22.70	215.56	1,826.4	-265.1	-222.5	-158.0	2.75	2.75	0.21
1,973.0	23.25	218.56	1,913.0	-294.3	-244.6	-173.0	1.38	0.59	3.19
2,068.0	24.25	221.35	1,999.9	-323.6	-269.2	-190.5	1.58	1.05	2.94
2,163.0	26.62	221.24	2,085.7	-354.3	-296.1	-209.9	2.50	2.49	-0.12
2,257.0	25.95	223.78	2,170.0	-385.0	-324.2	-230.5	1.39	-0.71	2.70
2,352.0	26.05	223.95	2,255.4	-415.0	-353.1	-251.9	0.13	0.11	0.18
2,447.0	25.74	221.70	2,340.9	-445.4	-381.3	-272.6	1.08	-0.33	-2.37
2,541.0	25.37	220.74	2,425.7	-475.9	-408.0	-291.9	0.59	-0.39	-1.02
2,636.0	24.38	222.45	2,511.9	-505.8	-434.5	-311.1	1.29	-1.04	1.80
2,730.0	26.42	223.70	2,596.8	-535.2	-462.1	-331.4	2.24	2.17	1.33
2,825.0	26.17	223.35	2,681.9	-565.7	-491.1	-352.9	0.31	-0.26	-0.37
2,920.0	25.27	223.93	2,767.5	-595.6	-519.5	-374.0	0.98	-0.95	0.61
3,014.0	24.92	221.80	2,852.6	-624.8	-546.6	-393.9	1.03	-0.37	-2.27
3,109.0	25.14	224.17	2,938.7	-654.2	-574.0	-414.1	1.08	0.23	2.49
3,204.0	26.48	224.92	3,024.2	-683.7	-603.0	-435.8	1.45	1.41	0.79
3,299.0	25.69	222.26	3,109.6	-713.9	-631.8	-457.2	1.49	-0.83	-2.80
3,394.0	26.74	226.31	3,194.8	-743.9	-661.2	-479.1	2.18	1.11	4.26
3,489.0	25.47	224.07	3,280.1	-773.4	-690.8	-501.5	1.69	-1.34	-2.36
3,583.0	27.01	224.42	3,364.4	-803.1	-719.8	-523.1	1.65	1.64	0.37
3,678.0	26.62	225.02	3,449.2	-833.6	-750.0	-545.7	0.50	-0.41	0.63
3,772.0	26.36	226.12	3,533.3	-862.9	-779.9	-568.4	0.59	-0.28	1.17
3,867.0	26.71	226.95	3,618.3	-892.1	-810.7	-591.9	0.54	0.37	0.87
3,961.0	27.20	223.47	3,702.1	-922.1	-840.9	-614.7	1.76	0.52	-3.70
4,005.2	26.98	224.07	3,741.5	-936.7	-854.9	-625.1	0.80	-0.50	1.37
<b>Parkman</b>									
4,056.0	26.73	224.78	3,786.8	-953.1	-870.9	-637.1	0.80	-0.49	1.39
4,151.0	26.62	223.33	3,871.7	-983.7	-900.6	-659.2	0.69	-0.12	-1.53
4,245.0	26.64	225.23	3,955.7	-1,013.9	-930.0	-681.1	0.91	0.02	2.02
4,340.0	26.24	222.93	4,040.8	-1,044.2	-959.4	-703.1	1.16	-0.42	-2.42
4,435.0	25.01	219.74	4,126.4	-1,075.1	-986.6	-722.7	1.95	-1.29	-3.36
4,529.0	25.79	219.99	4,211.4	-1,106.0	-1,012.4	-741.0	0.84	0.83	0.27
4,614.8	26.04	220.17	4,288.5	-1,134.7	-1,036.5	-758.1	0.31	0.29	0.21
<b>Sussex</b>									

<b>Company:</b>	PDC Energy Inc. DJ Basin	<b>Local Co-ordinate Reference:</b>	Well Bost Farm 16N-8A-L
<b>Project:</b>	SEC.7-T5N-R66W	<b>TVD Reference:</b>	WELL @ 4902ft (Patterson 272 - RKB 28')
<b>Site:</b>	Bost Farms 5-7 Pad SEC.7-T5N-R66W	<b>MD Reference:</b>	WELL @ 4902ft (Patterson 272 - RKB 28')
<b>Well:</b>	Bost Farm 16N-8A-L	<b>North Reference:</b>	True
<b>Wellbore:</b>	Bost Farm 16N-8A-L Wellbore #1	<b>Survey Calculation Method:</b>	Minimum Curvature
<b>Design:</b>	16N-8A-L_Final Surveys	<b>Database:</b>	US_EDM

Survey										
Measured Depth (ft)	Inclination (°)	Azimuth (°)	Vertical Depth (ft)	+N/-S (ft)	+E/-W (ft)	Vertical Section (ft)	Dogleg Rate (°/100usft)	Build Rate (°/100usft)	Turn Rate (°/100usft)	
4,624.0	26.07	220.19	4,296.8	-1,137.8	-1,039.2	-760.0	0.31	0.29	0.21	
4,719.0	26.46	218.91	4,382.0	-1,170.2	-1,065.9	-778.9	0.72	0.41	-1.35	
4,814.0	26.43	217.73	4,467.0	-1,203.4	-1,092.1	-797.1	0.55	-0.03	-1.24	
4,909.0	25.91	220.98	4,552.3	-1,235.8	-1,118.7	-815.8	1.60	-0.55	3.42	
5,003.0	26.55	219.56	4,636.6	-1,267.5	-1,145.5	-834.9	0.95	0.68	-1.51	
5,098.0	25.86	218.79	4,721.9	-1,300.0	-1,172.0	-853.5	0.81	-0.73	-0.81	
5,193.0	25.88	223.81	4,807.4	-1,331.1	-1,199.4	-873.2	2.31	0.02	5.28	
5,287.0	25.03	222.21	4,892.2	-1,360.7	-1,226.9	-893.5	1.16	-0.90	-1.70	
5,331.5	25.10	222.74	4,932.5	-1,374.5	-1,239.7	-902.8	0.52	0.16	1.18	
Shannon										
5,382.0	25.18	223.33	4,978.3	-1,390.2	-1,254.3	-913.6	0.52	0.16	1.18	
5,477.0	23.70	219.91	5,064.8	-1,419.6	-1,280.4	-932.6	2.15	-1.56	-3.60	
5,571.0	24.29	221.12	5,150.6	-1,448.6	-1,305.3	-950.3	0.82	0.63	1.29	
5,666.0	25.03	222.28	5,237.0	-1,478.2	-1,331.6	-969.4	0.93	0.78	1.22	
5,761.0	25.50	223.69	5,322.9	-1,507.9	-1,359.3	-989.8	0.80	0.49	1.48	
5,856.0	25.10	222.79	5,408.8	-1,537.5	-1,387.1	-1,010.3	0.58	-0.42	-0.95	
5,950.0	24.34	221.31	5,494.2	-1,566.6	-1,413.4	-1,029.5	1.04	-0.81	-1.57	
6,045.0	23.79	221.41	5,580.9	-1,595.7	-1,439.0	-1,048.0	0.58	-0.58	0.11	
6,140.0	25.16	221.88	5,667.4	-1,625.1	-1,465.2	-1,067.0	1.46	1.44	0.49	
6,234.0	25.60	223.34	5,752.3	-1,654.8	-1,492.5	-1,087.0	0.81	0.47	1.55	
6,329.0	25.01	222.47	5,838.2	-1,684.5	-1,520.1	-1,107.3	0.73	-0.62	-0.92	
6,424.0	25.67	223.01	5,924.0	-1,714.4	-1,547.7	-1,127.6	0.74	0.69	0.57	
6,519.0	25.43	222.27	6,009.7	-1,744.5	-1,575.5	-1,147.9	0.42	-0.25	-0.78	
6,614.0	25.02	222.80	6,095.7	-1,774.4	-1,602.8	-1,168.0	0.49	-0.43	0.56	
6,708.0	24.73	222.67	6,181.0	-1,803.4	-1,629.7	-1,187.7	0.31	-0.31	-0.14	
6,803.0	19.76	205.82	6,268.9	-1,832.5	-1,650.2	-1,201.2	8.46	-5.23	-17.74	
6,897.0	19.32	183.05	6,357.7	-1,862.4	-1,657.9	-1,202.1	8.07	-0.47	-24.22	
6,992.0	20.60	161.92	6,447.1	-1,894.0	-1,653.6	-1,190.8	7.67	1.35	-22.24	
7,087.0	23.20	139.90	6,535.4	-1,924.3	-1,636.3	-1,167.2	9.01	2.74	-23.18	
7,181.0	26.73	122.35	6,620.7	-1,949.8	-1,606.5	-1,132.5	8.69	3.76	-18.67	
7,276.0	33.21	117.44	6,702.9	-1,973.2	-1,565.3	-1,087.1	7.29	6.82	-5.17	
7,370.0	40.18	112.16	6,778.3	-1,996.6	-1,514.3	-1,032.2	8.13	7.41	-5.62	
7,465.0	47.36	109.54	6,846.9	-2,019.8	-1,452.9	-967.1	7.79	7.56	-2.76	
7,559.0	54.99	104.83	6,905.8	-2,041.3	-1,382.9	-894.2	9.00	8.12	-5.01	
7,615.6	59.16	102.71	6,936.5	-2,052.6	-1,336.8	-846.7	8.02	7.38	-3.74	
Sharon Springs										
7,654.0	62.02	101.38	6,955.4	-2,059.6	-1,304.1	-813.3	8.02	7.43	-3.47	
7,691.0	62.75	101.31	6,972.5	-2,066.0	-1,272.0	-780.5	1.99	1.98	-0.19	
Niobrara A										
7,749.0	63.90	101.20	6,998.6	-2,076.1	-1,221.1	-728.7	1.99	1.98	-0.19	
7,843.0	72.85	100.59	7,033.2	-2,092.6	-1,135.4	-641.4	9.54	9.52	-0.65	
7,938.0	80.39	95.75	7,055.1	-2,105.7	-1,044.0	-549.4	9.36	7.94	-5.09	
8,027.7	85.15	92.37	7,066.4	-2,112.0	-955.3	-461.5	6.49	5.30	-3.77	
LP (726.6' FSL, 150' FWL)										

<b>Company:</b>	PDC Energy Inc. DJ Basin	<b>Local Co-ordinate Reference:</b>	Well Bost Farm 16N-8A-L
<b>Project:</b>	SEC.7-T5N-R66W	<b>TVD Reference:</b>	WELL @ 4902ft (Patterson 272 - RKB 28')
<b>Site:</b>	Bost Farms 5-7 Pad SEC.7-T5N-R66W	<b>MD Reference:</b>	WELL @ 4902ft (Patterson 272 - RKB 28')
<b>Well:</b>	Bost Farm 16N-8A-L	<b>North Reference:</b>	True
<b>Wellbore:</b>	Bost Farm 16N-8A-L Wellbore #1	<b>Survey Calculation Method:</b>	Minimum Curvature
<b>Design:</b>	16N-8A-L_Final Surveys	<b>Database:</b>	US_EDM

**Survey**

Measured Depth (ft)	Inclination (°)	Azimuth (°)	Vertical Depth (ft)	+N/-S (ft)	+E/-W (ft)	Vertical Section (ft)	Dogleg Rate (°/100usft)	Build Rate (°/100usft)	Turn Rate (°/100usft)
8,033.0	85.43	92.17	7,066.9	-2,112.2	-950.0	-456.3	6.49	5.32	-3.73
8,127.0	86.65	85.25	7,073.4	-2,110.1	-856.3	-365.5	7.46	1.30	-7.36
8,222.0	88.74	85.17	7,077.2	-2,102.1	-761.7	-275.0	2.20	2.20	-0.08
8,317.0	88.64	85.59	7,079.4	-2,094.5	-667.0	-184.4	0.45	-0.11	0.44
8,411.0	89.10	87.02	7,081.2	-2,088.4	-573.3	-94.3	1.60	0.49	1.52
8,506.0	89.08	88.76	7,082.7	-2,084.9	-478.3	-2.6	1.83	-0.02	1.83
8,696.0	88.63	89.40	7,086.5	-2,081.9	-288.4	181.9	0.41	-0.24	0.34
8,790.0	88.65	89.61	7,088.8	-2,081.1	-194.4	273.4	0.22	0.02	0.22
8,885.0	88.65	89.16	7,091.0	-2,080.0	-99.5	365.7	0.47	0.00	-0.47
9,074.0	87.94	89.06	7,096.6	-2,077.1	89.4	549.2	0.38	-0.38	-0.05
9,169.0	87.94	88.10	7,100.0	-2,074.8	184.3	641.3	1.01	0.00	-1.01
9,264.0	87.78	88.35	7,103.6	-2,071.8	279.2	733.1	0.31	-0.17	0.26
9,358.0	87.89	88.48	7,107.1	-2,069.2	373.1	824.1	0.18	0.12	0.14
9,453.0	87.70	88.63	7,110.8	-2,066.8	468.0	916.1	0.25	-0.20	0.16
9,548.0	89.76	88.44	7,112.9	-2,064.4	563.0	1,008.1	2.18	2.17	-0.20
9,643.0	89.90	87.53	7,113.2	-2,061.1	657.9	1,099.9	0.97	0.15	-0.96
9,737.0	90.17	88.87	7,113.1	-2,058.1	751.8	1,190.8	1.45	0.29	1.43
9,831.0	90.52	87.53	7,112.5	-2,055.1	845.8	1,281.8	1.47	0.37	-1.43
9,925.0	90.11	88.63	7,112.0	-2,052.0	939.7	1,372.7	1.25	-0.44	1.17
10,114.0	90.69	90.30	7,110.7	-2,050.2	1,128.7	1,556.5	0.94	0.31	0.88
10,208.0	90.17	91.16	7,110.0	-2,051.4	1,222.7	1,648.4	1.07	-0.55	0.91
10,302.0	90.81	90.29	7,109.2	-2,052.6	1,316.7	1,740.3	1.15	0.68	-0.93
10,489.0	89.96	91.31	7,107.9	-2,055.2	1,503.7	1,923.2	0.71	-0.45	0.55
10,584.0	90.40	90.99	7,107.6	-2,057.1	1,598.6	2,016.2	0.57	0.46	-0.34
10,679.0	90.91	89.96	7,106.6	-2,057.9	1,693.6	2,109.0	1.21	0.54	-1.08
10,772.0	90.61	90.28	7,105.3	-2,058.1	1,786.6	2,199.7	0.47	-0.32	0.34
10,867.0	90.18	90.49	7,104.7	-2,058.8	1,881.6	2,292.5	0.50	-0.45	0.22
10,962.0	90.30	90.54	7,104.3	-2,059.6	1,976.6	2,385.3	0.14	0.13	0.05
11,056.0	89.96	90.67	7,104.1	-2,060.6	2,070.6	2,477.1	0.39	-0.36	0.14
11,246.0	90.78	90.07	7,102.8	-2,061.8	2,260.6	2,662.6	0.53	0.43	-0.32
11,434.0	90.35	90.75	7,101.0	-2,063.2	2,448.6	2,846.2	0.43	-0.23	0.36
11,623.0	90.86	90.20	7,099.0	-2,064.7	2,637.6	3,030.8	0.40	0.27	-0.29
11,717.0	90.64	89.52	7,097.8	-2,064.5	2,731.6	3,122.4	0.76	-0.23	-0.72
11,811.0	90.20	89.70	7,097.1	-2,063.9	2,825.6	3,213.9	0.51	-0.47	0.19
11,905.0	89.60	90.39	7,097.2	-2,063.9	2,919.6	3,305.5	0.97	-0.64	0.73
11,999.0	90.10	89.83	7,097.5	-2,064.1	3,013.6	3,397.2	0.80	0.53	-0.60
12,093.0	89.36	90.98	7,097.9	-2,064.8	3,107.5	3,489.0	1.45	-0.79	1.22
12,188.0	89.25	91.17	7,099.1	-2,066.6	3,202.5	3,582.0	0.23	-0.12	0.20
12,282.0	90.24	88.93	7,099.5	-2,066.7	3,296.5	3,673.7	2.61	1.05	-2.38
12,376.0	89.65	90.36	7,099.6	-2,066.1	3,390.5	3,765.2	1.65	-0.63	1.52
12,469.0	90.41	89.45	7,099.5	-2,065.9	3,483.5	3,855.8	1.27	0.82	-0.98
12,563.0	90.13	89.59	7,099.1	-2,065.1	3,577.5	3,947.3	0.33	-0.30	0.15
12,752.0	89.77	90.20	7,099.3	-2,064.8	3,766.5	4,131.4	0.37	-0.19	0.32
12,940.0	89.82	89.29	7,099.9	-2,063.9	3,954.5	4,314.5	0.48	0.03	-0.48

<b>Company:</b>	PDC Energy Inc. DJ Basin	<b>Local Co-ordinate Reference:</b>	Well Bost Farm 16N-8A-L
<b>Project:</b>	SEC.7-T5N-R66W	<b>TVD Reference:</b>	WELL @ 4902ft (Patterson 272 - RKB 28')
<b>Site:</b>	Bost Farms 5-7 Pad SEC.7-T5N-R66W	<b>MD Reference:</b>	WELL @ 4902ft (Patterson 272 - RKB 28')
<b>Well:</b>	Bost Farm 16N-8A-L	<b>North Reference:</b>	True
<b>Wellbore:</b>	Bost Farm 16N-8A-L Wellbore #1	<b>Survey Calculation Method:</b>	Minimum Curvature
<b>Design:</b>	16N-8A-L_Final Surveys	<b>Database:</b>	US_EDM

### Survey

Measured Depth (ft)	Inclination (°)	Azimuth (°)	Vertical Depth (ft)	+N/-S (ft)	+E/-W (ft)	Vertical Section (ft)	Dogleg Rate (°/100usft)	Build Rate (°/100usft)	Turn Rate (°/100usft)
13,034.0	89.62	90.06	7,100.4	-2,063.4	4,048.5	4,406.1	0.85	-0.21	0.82
13,223.0	89.82	89.25	7,101.3	-2,062.3	4,237.5	4,590.1	0.44	0.11	-0.43
13,317.0	89.47	90.12	7,101.9	-2,061.8	4,331.5	4,681.6	1.00	-0.37	0.93
13,412.0	89.26	91.20	7,102.9	-2,062.9	4,426.5	4,774.4	1.16	-0.22	1.14
13,506.0	89.62	90.63	7,103.9	-2,064.4	4,520.5	4,866.4	0.72	0.38	-0.61
13,600.0	89.55	90.21	7,104.5	-2,065.0	4,614.4	4,958.2	0.45	-0.07	-0.45
13,694.0	89.93	91.97	7,105.0	-2,066.8	4,708.4	5,050.2	1.92	0.40	1.87
13,789.0	90.03	91.73	7,105.0	-2,069.9	4,803.4	5,143.5	0.27	0.11	-0.25
13,883.0	89.90	92.54	7,105.1	-2,073.4	4,897.3	5,235.8	0.87	-0.14	0.86
13,977.0	89.97	91.69	7,105.2	-2,076.9	4,991.2	5,328.2	0.91	0.07	-0.90
14,072.0	90.40	90.08	7,104.9	-2,078.3	5,086.2	5,421.1	1.75	0.45	-1.69
14,166.0	90.60	89.96	7,104.0	-2,078.4	5,180.2	5,512.8	0.25	0.21	-0.13
14,261.0	90.60	90.34	7,103.0	-2,078.6	5,275.2	5,605.4	0.40	0.00	0.40
14,356.0	89.97	90.73	7,102.6	-2,079.5	5,370.2	5,698.2	0.78	-0.66	0.41
14,450.0	90.15	90.19	7,102.5	-2,080.3	5,464.2	5,790.1	0.61	0.19	-0.57
14,544.0	90.03	90.01	7,102.3	-2,080.4	5,558.2	5,881.7	0.23	-0.13	-0.19
14,639.0	90.17	90.04	7,102.2	-2,080.5	5,653.2	5,974.4	0.15	0.15	0.03
14,733.0	90.18	90.53	7,101.9	-2,080.9	5,747.2	6,066.1	0.52	0.01	0.52
14,827.0	90.22	89.76	7,101.5	-2,081.2	5,841.2	6,157.8	0.82	0.04	-0.82
14,921.0	90.07	90.30	7,101.3	-2,081.2	5,935.2	6,249.5	0.60	-0.16	0.57
15,015.0	90.51	89.43	7,100.8	-2,081.0	6,029.2	6,341.1	1.04	0.47	-0.93
15,109.0	89.90	90.62	7,100.5	-2,081.0	6,123.2	6,432.7	1.42	-0.65	1.27
15,297.0	89.59	91.85	7,101.3	-2,085.1	6,311.2	6,616.9	0.67	-0.16	0.65
15,391.0	89.83	91.64	7,101.8	-2,088.0	6,405.1	6,709.1	0.34	0.26	-0.22
15,485.0	89.61	91.78	7,102.3	-2,090.8	6,499.1	6,801.3	0.28	-0.23	0.15
15,580.0	89.72	91.38	7,102.8	-2,093.4	6,594.0	6,894.5	0.44	0.12	-0.42
15,674.0	89.63	91.68	7,103.4	-2,095.9	6,688.0	6,986.6	0.33	-0.10	0.32
15,862.0	89.63	91.29	7,104.6	-2,100.8	6,875.9	7,171.0	0.21	0.00	-0.21
16,050.0	89.48	91.95	7,106.0	-2,106.1	7,063.8	7,355.3	0.36	-0.08	0.35
16,144.0	89.78	90.49	7,106.6	-2,108.1	7,157.8	7,447.4	1.59	0.32	-1.55
16,332.0	89.69	91.14	7,107.5	-2,110.8	7,345.8	7,631.3	0.35	-0.05	0.35
16,426.0	90.52	90.22	7,107.3	-2,111.9	7,439.8	7,723.2	1.32	0.88	-0.98
16,520.0	90.64	89.47	7,106.4	-2,111.6	7,533.8	7,814.7	0.81	0.13	-0.80
16,614.0	90.67	89.29	7,105.3	-2,110.6	7,627.8	7,906.1	0.19	0.03	-0.19
16,708.0	90.50	90.25	7,104.3	-2,110.2	7,721.8	7,997.7	1.04	-0.18	1.02
16,802.0	90.53	87.05	7,103.5	-2,108.0	7,815.7	8,088.8	3.40	0.03	-3.40
16,897.0	90.60	86.88	7,102.6	-2,103.0	7,910.6	8,180.2	0.19	0.07	-0.18
16,991.0	91.81	85.42	7,100.6	-2,096.7	8,004.3	8,270.2	2.02	1.29	-1.55
17,085.0	91.61	87.80	7,097.8	-2,091.1	8,098.1	8,360.4	2.54	-0.21	2.53
17,273.0	91.47	88.04	7,092.7	-2,084.3	8,285.9	8,542.0	0.15	-0.07	0.13
17,368.0	91.75	87.25	7,090.1	-2,080.4	8,380.8	8,633.6	0.88	0.29	-0.83
17,462.0	91.68	87.65	7,087.2	-2,076.2	8,474.7	8,724.2	0.43	-0.07	0.43
17,650.0	91.49	88.15	7,082.0	-2,069.3	8,662.5	8,905.8	0.28	-0.10	0.27

<b>Company:</b>	PDC Energy Inc. DJ Basin	<b>Local Co-ordinate Reference:</b>	Well Bost Farm 16N-8A-L
<b>Project:</b>	SEC.7-T5N-R66W	<b>TVD Reference:</b>	WELL @ 4902ft (Patterson 272 - RKB 28')
<b>Site:</b>	Bost Farms 5-7 Pad SEC.7-T5N-R66W	<b>MD Reference:</b>	WELL @ 4902ft (Patterson 272 - RKB 28')
<b>Well:</b>	Bost Farm 16N-8A-L	<b>North Reference:</b>	True
<b>Wellbore:</b>	Bost Farm 16N-8A-L Wellbore #1	<b>Survey Calculation Method:</b>	Minimum Curvature
<b>Design:</b>	16N-8A-L_Final Surveys	<b>Database:</b>	US_EDM

Survey										
Measured Depth (ft)	Inclination (°)	Azimuth (°)	Vertical Depth (ft)	+N/-S (ft)	+E/-W (ft)	Vertical Section (ft)	Dogleg Rate (°/100usft)	Build Rate (°/100usft)	Turn Rate (°/100usft)	
17,839.0	91.82	87.39	7,076.6	-2,062.0	8,851.3	9,088.2	0.44	0.17	-0.40	
17,964.0	91.82	87.57	7,072.6	-2,056.5	8,976.1	9,208.6	0.14	0.00	0.14	
17,995.0	91.82	87.57	7,071.6	-2,055.2	9,007.0	9,238.5	0.00	0.00	0.00	
BHL (777' FSL, 465.5' FEL)										

Formations						
Measured Depth (ft)	Vertical Depth (ft)	Name	Lithology	Dip (°)	Dip Direction (°)	
788.9	787.5	Fox Hills Aq Base				
4,005.2	3,741.5	Parkman				
4,614.8	4,288.5	Sussex				
5,331.5	4,932.5	Shannon				
7,615.6	6,936.5	Sharon Springs				
7,691.0	6,972.5	Niobrara A				

Survey Annotations					
Measured Depth (ft)	Vertical Depth (ft)	Local Coordinates			
		+N/-S (ft)	+E/-W (ft)	Comment	
8,027.7	7,066.4	-2,112.0	-955.3	LP (726.6' FSL, 150' FWL)	
17,995.0	7,071.6	-2,055.2	9,007.0	BHL (777' FSL, 465.5' FEL)	