

Company: PDC Energy Inc

Well: Bost Farm 16N-8A-L

Field Name: Wattenberg

Country Name: United States

State Name: Colorado

County Name: Weld

XBOLT GAMMA RAY

1in/100ft Measured Depth

Final Print

Recorded Mode

Schlumberger

Company: PDC Energy Inc

Well: Bost Farm 16N-8A-L

Field Name: Wattenberg

Country Name: United States

State Name: Colorado

County Name: Weld

Latitude: 40°24'52.718"N

Longitude: 104°49'42.096"W

Spud Date: 16-Apr-2022

Log Interval: 1680.00--17994.96(ft)

Depth Source: Driller's Depth

Log Measured From: Drill Floor

Drill Floor Elevation: 4902.00(ft)

Ground Level Elevation: 4874.00(ft)

Permanent Datum: Sea Level

API Number: 05-123-51448

Rig Name: Patterson 272

Rig Type: Land rig

Job Number: 22CC00032

Print Type: Final Print

Nothing: 1394603.41 (ft)

Easting: 3187016.50 (ft)

Coordinate System: Plane, Northern Zone, US Feet

Disclaimer

THE USE OF AND RELIANCE UPON THIS RECORDED-DATA BY THE HEREIN NAMED COMPANY (AND ANY OF ITS AFFILIATES, PARTNERS, REPRESENTATIVES, AGENTS, CONSULTANTS AND EMPLOYEES) IS SUBJECT TO THE TERMS AND CONDITIONS AGREED UPON BETWEEN SCHLUMBERGER AND THE COMPANY, INCLUDING: (a) RESTRICTIONS ON USE OF THE RECORDED-DATA; (b) DISCLAIMERS AND WAIVERS OF WARRANTIES AND REPRESENTATIONS REGARDING COMPANY'S USE AND RELIANCE UPON THE RECORDED-DATA; AND (c) CUSTOMER'S FULL AND SOLE RESPONSIBILITY FOR ANY INFERENCE DRAWN OR DECISION MADE IN CONNECTION WITH THE USE OF THIS RECORDED-DATA.

Operational Run Summary

Notes

Run 1 (Bit Size: 8.5 in)

DateTime Log Started	18-Apr-2022 02:31:59	DateTime Log Finished	21-Apr-2022 07:11:44
Start Depth (ft)	1680	Stop Depth (ft)	17995
Mud Type	Oil Based Mud	Mud Density (lbm/gal)	10
Potassium (%)	0	Barite	Yes
GR Sensor Offset (ft)	29.53	Calibration Coefficient	0
DNI Sensor Offset (ft)	25.7		

Log

Description: XBOLT GAMMA RAY

Format: XBOLT_RT VS RM_PDC

Index Scale: 1in/100ft

Index Unit: ft

Index Type: Measured Depth

Creation Date: 21-Apr-2022

GR_RM,XBOLT		Depth	ROP5_RT			TEMP_RT,XBOLT			
0	gAPI, Borehole	300	1 : 100	0	ft/h, Borehole	500	0	degF, Borehole	350

TVD_RT

in : ft

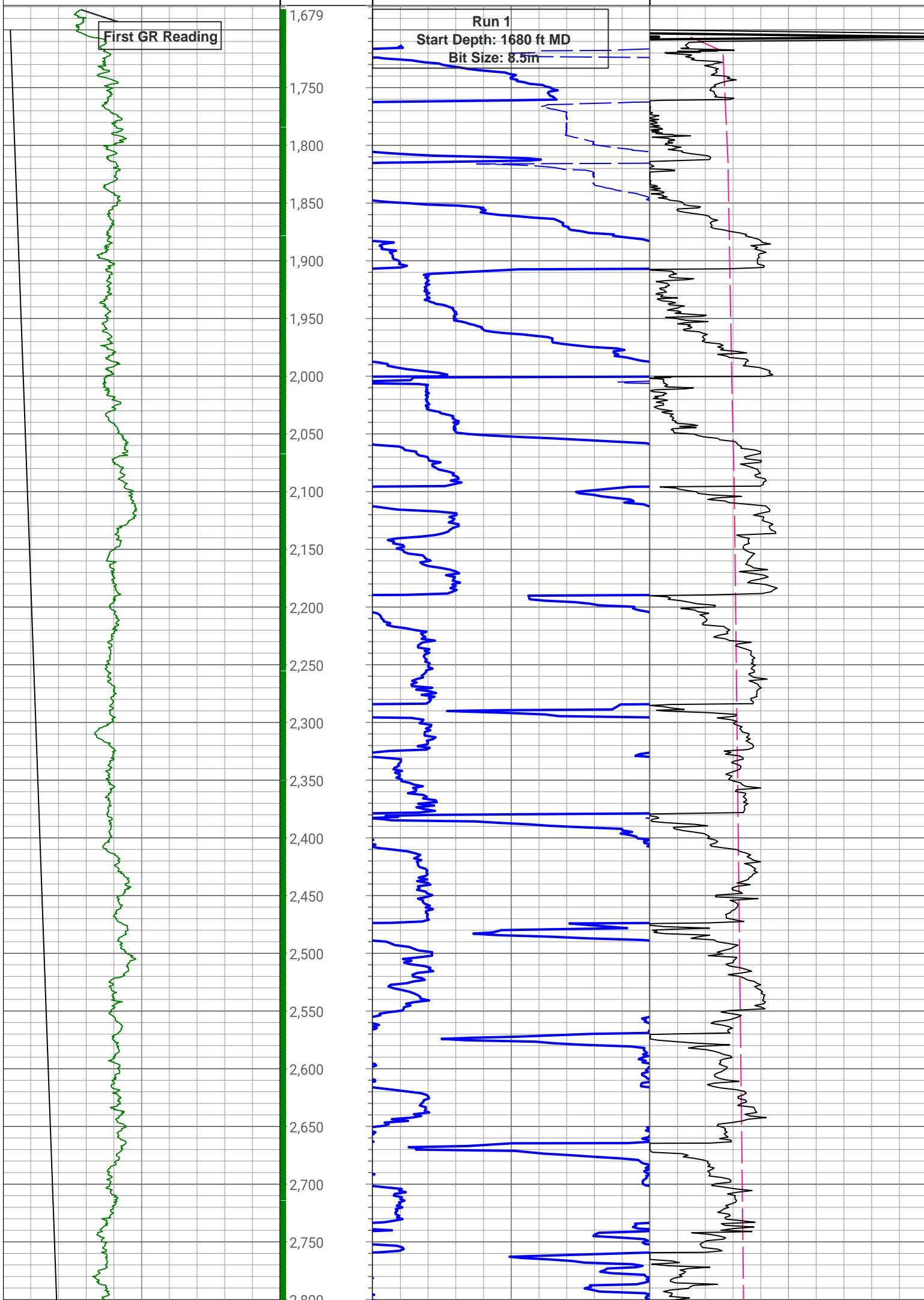
SWOB_RT

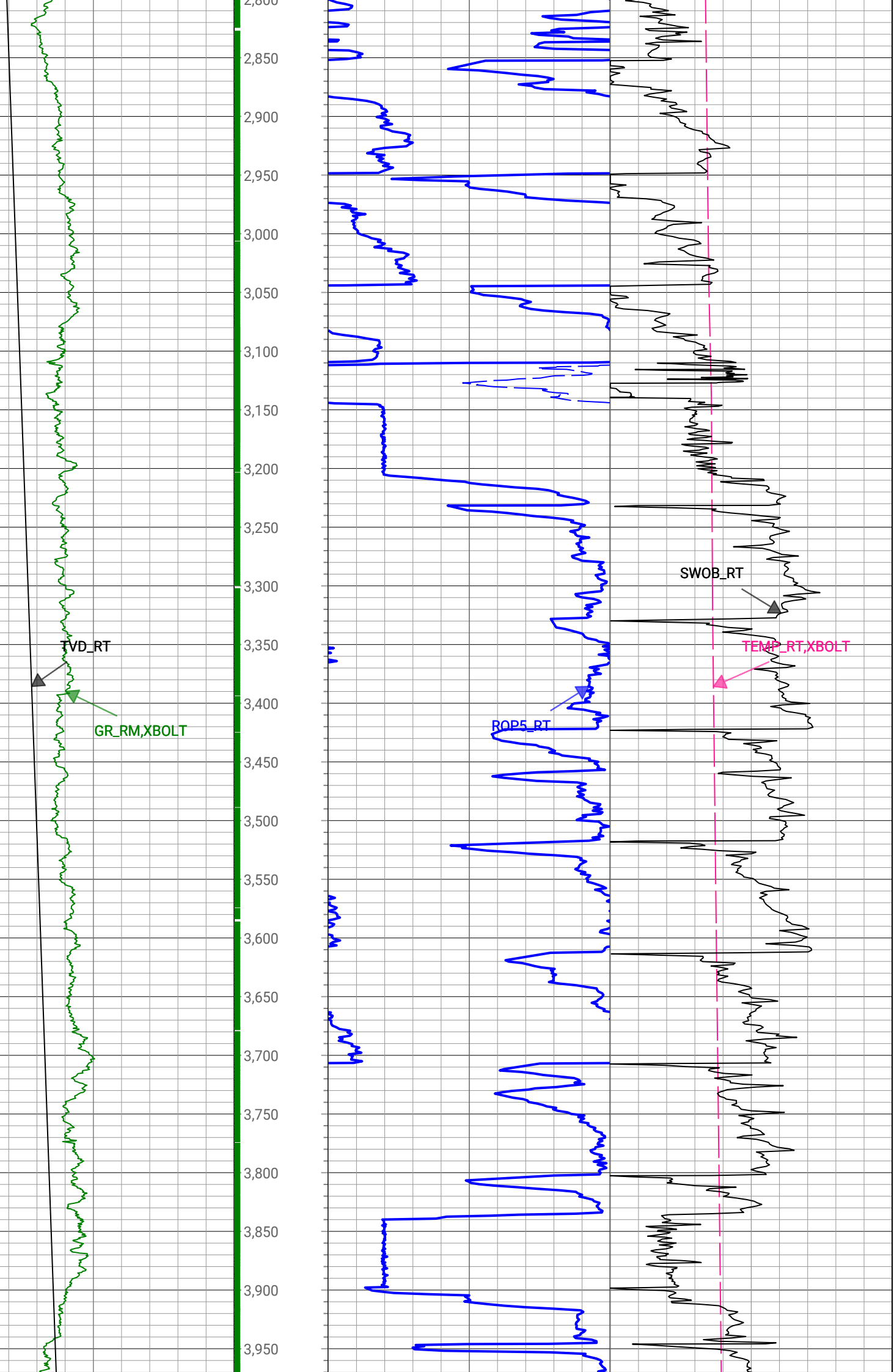
1,500 ft, Borehole 7,500

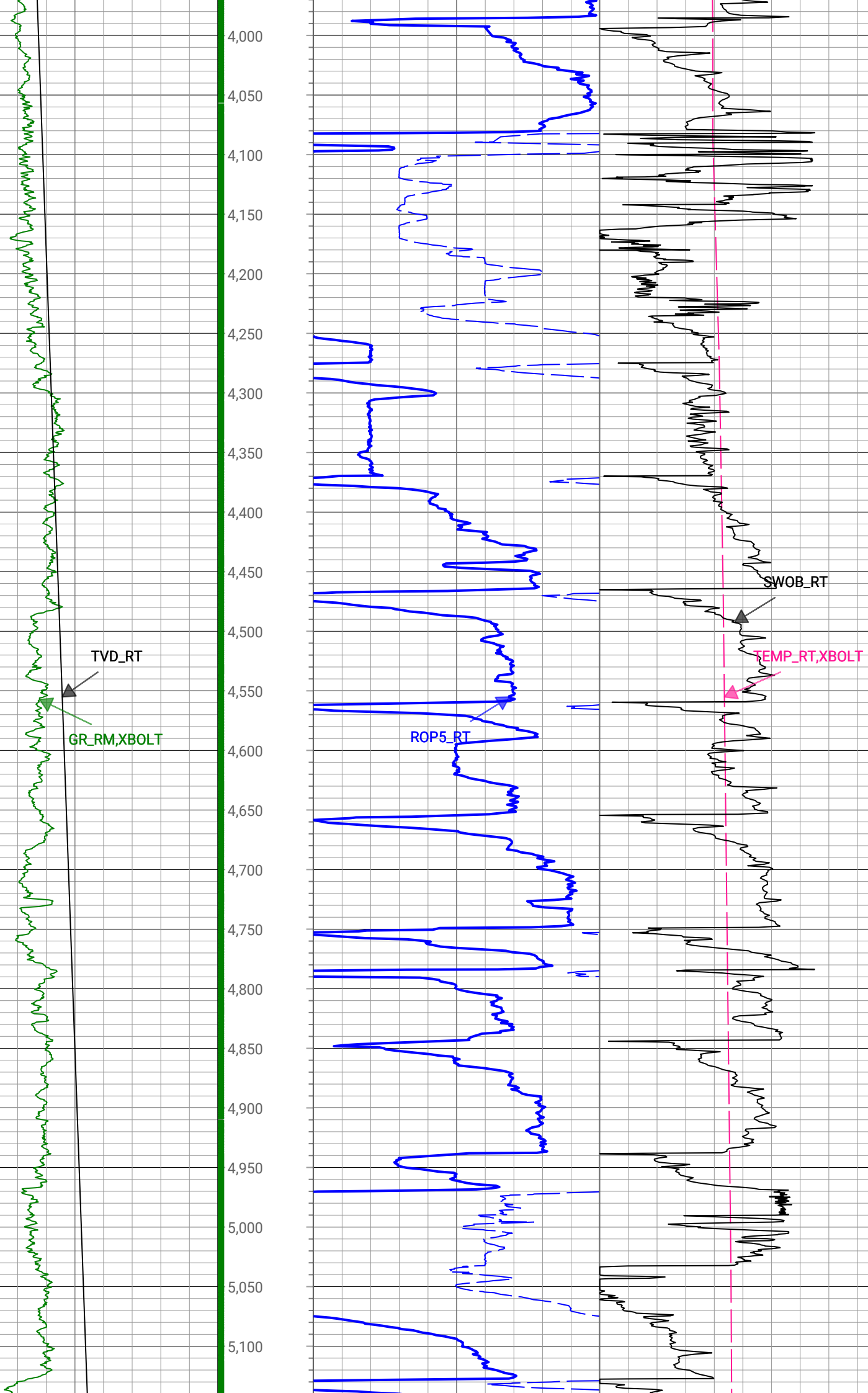
0 1000 lbf, Borehole 50

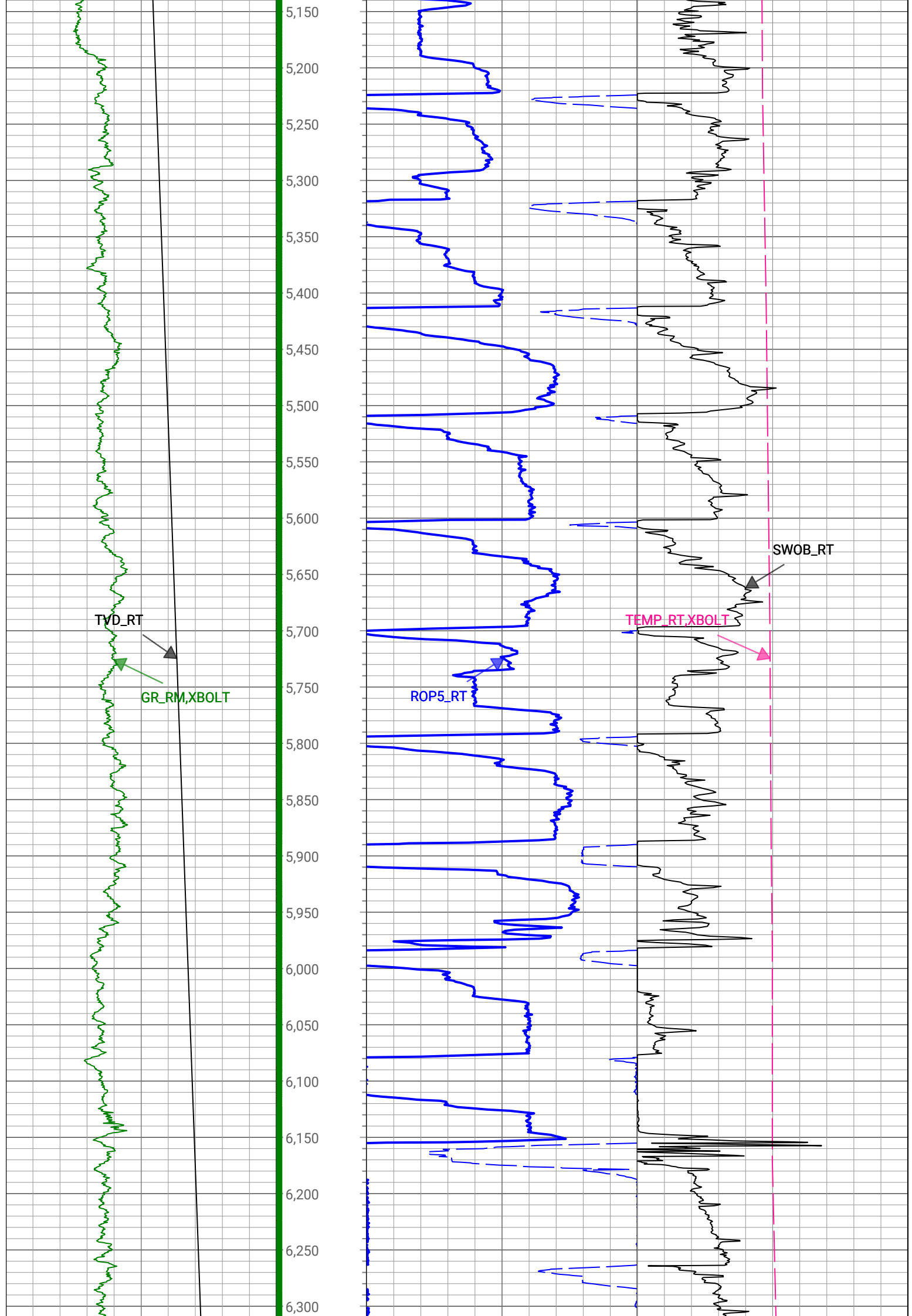
First GR Reading

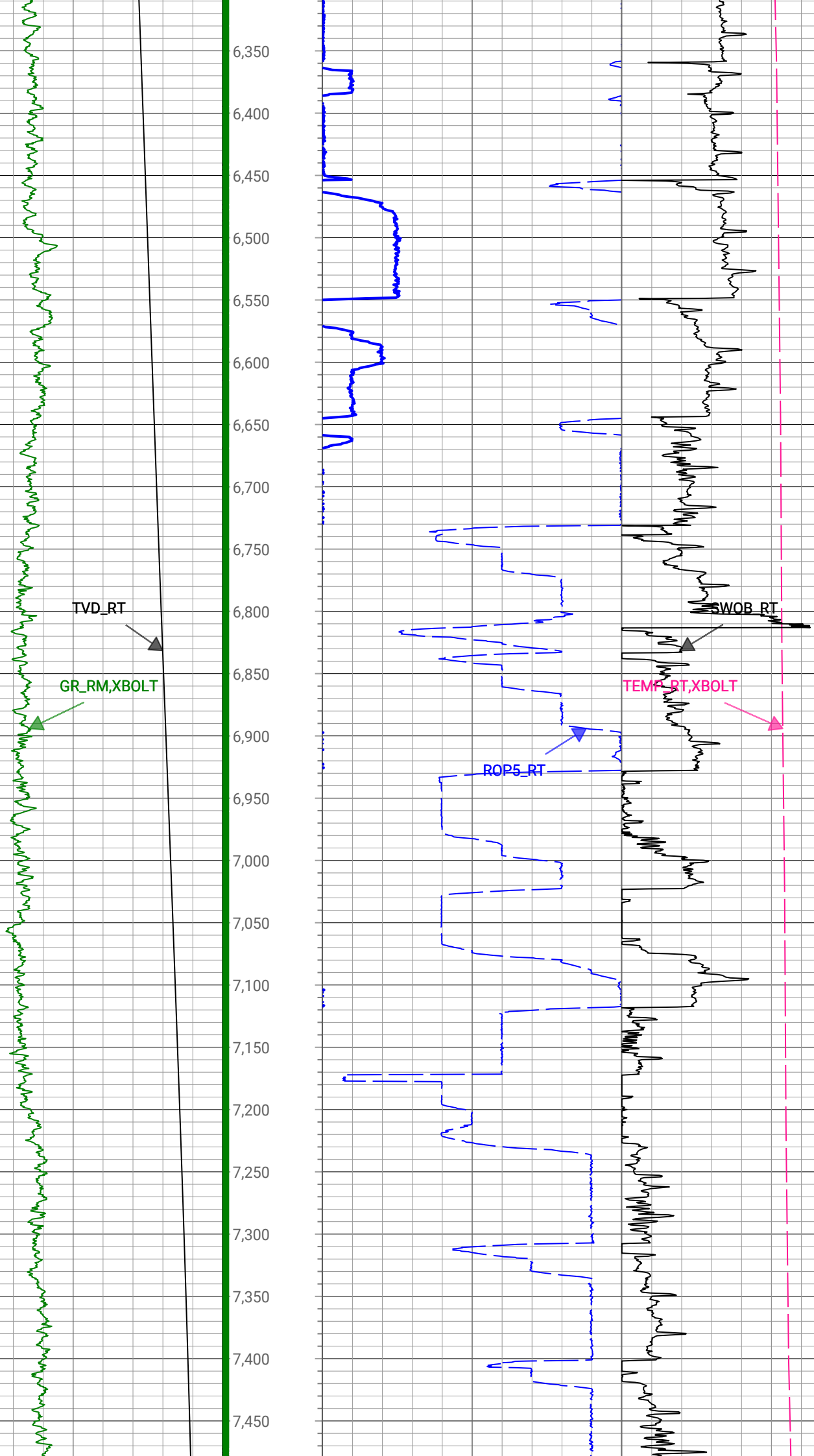
Run 1
Start Depth: 1680 ft MD
Bit Size: 8.5in

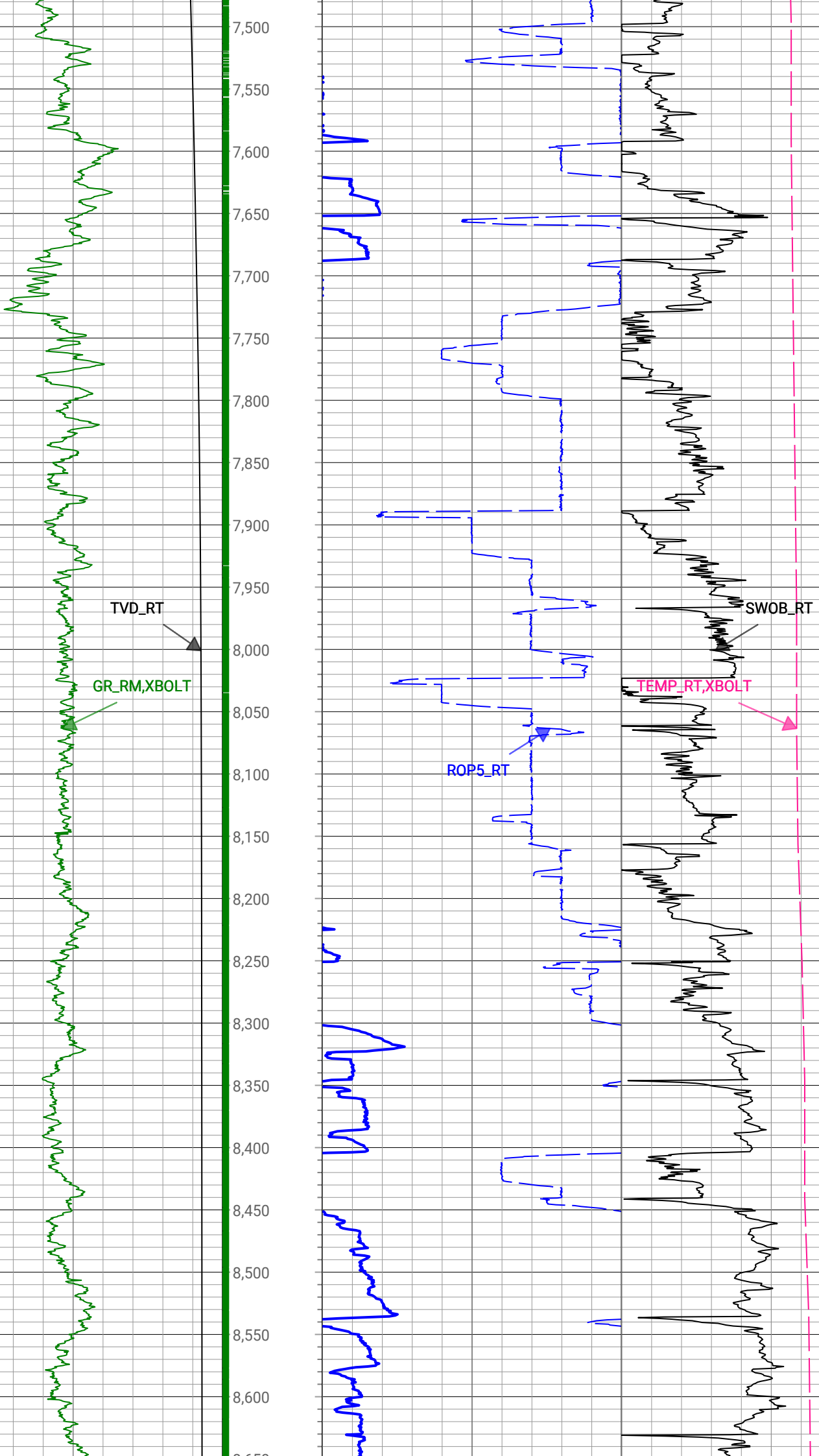


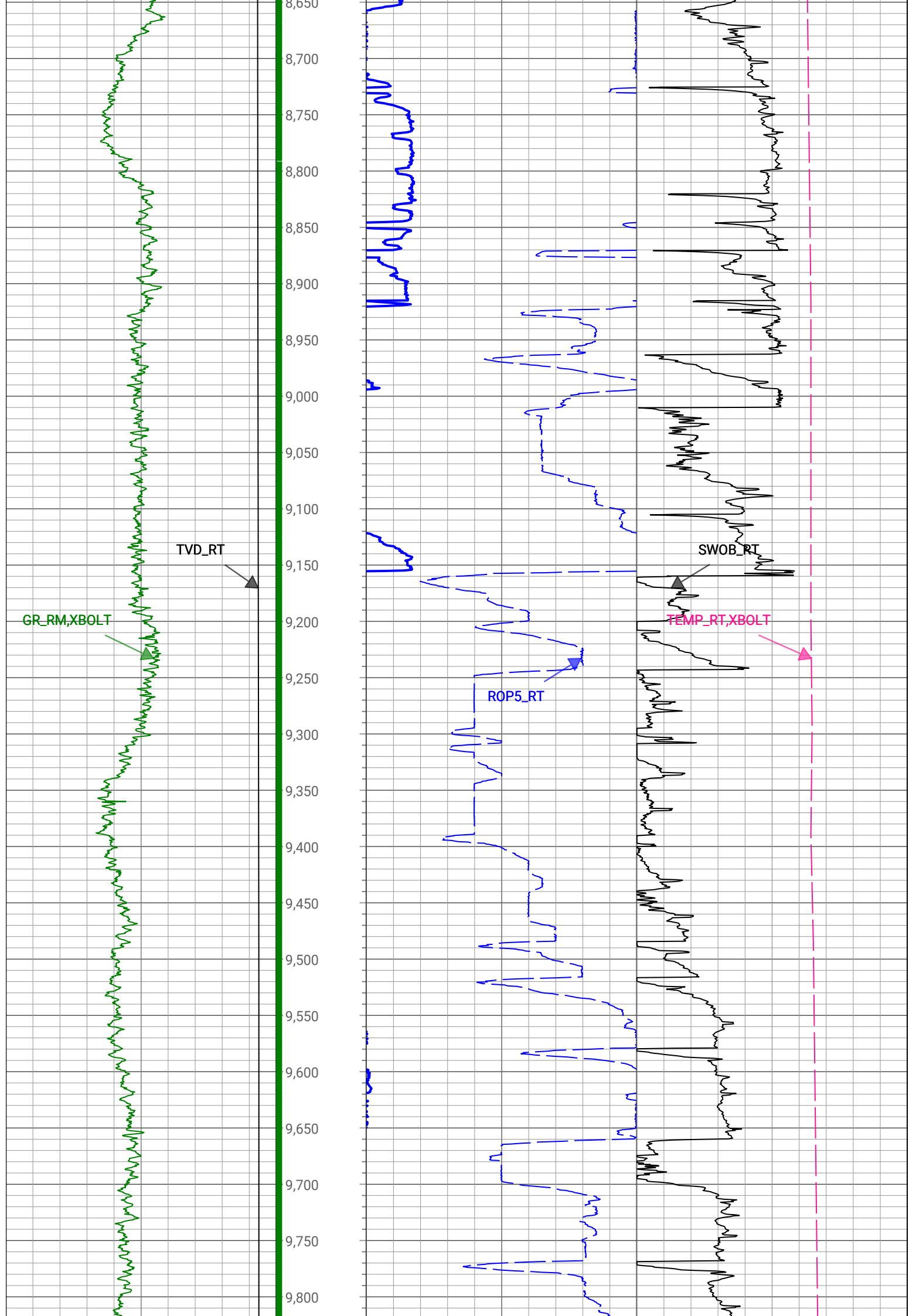


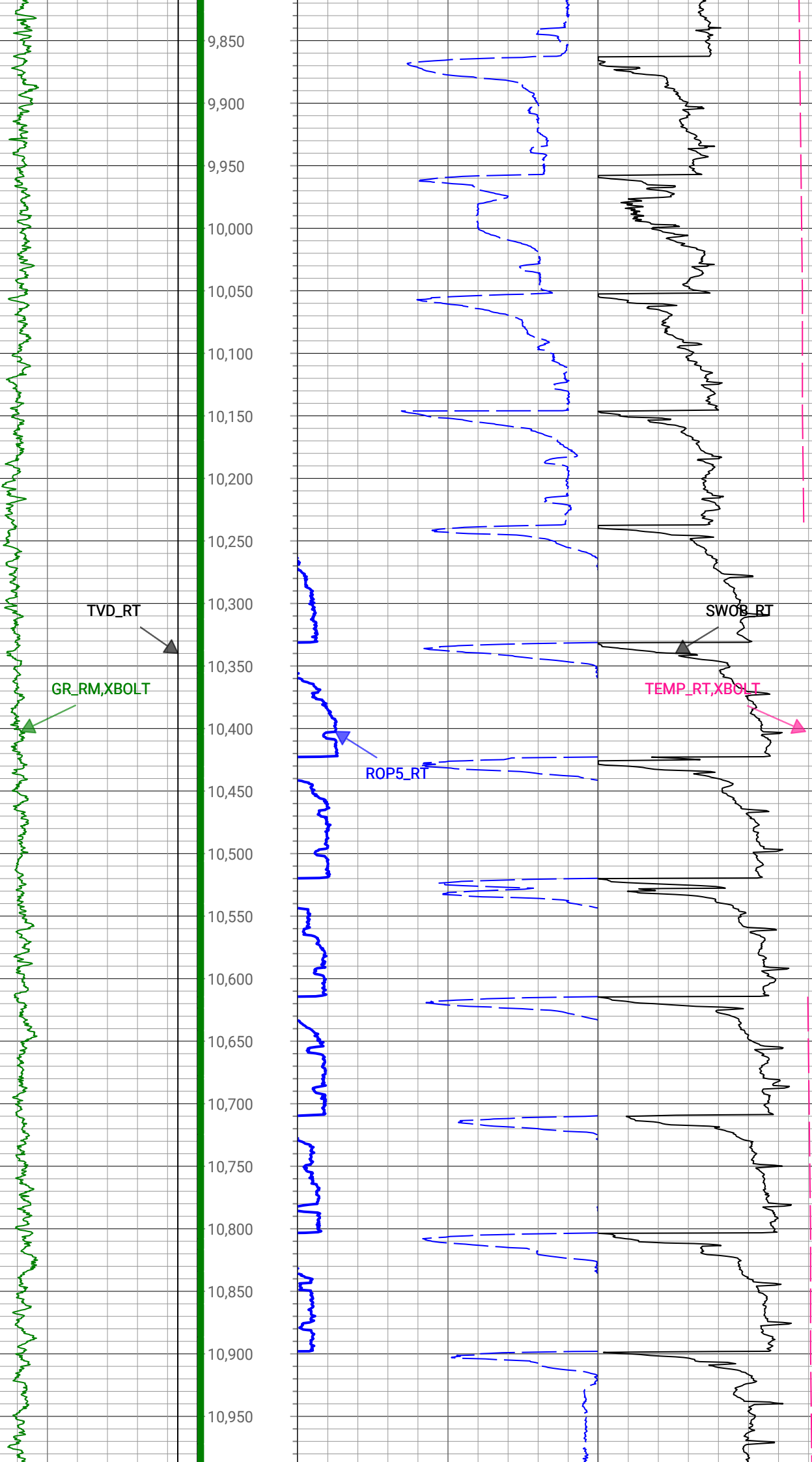


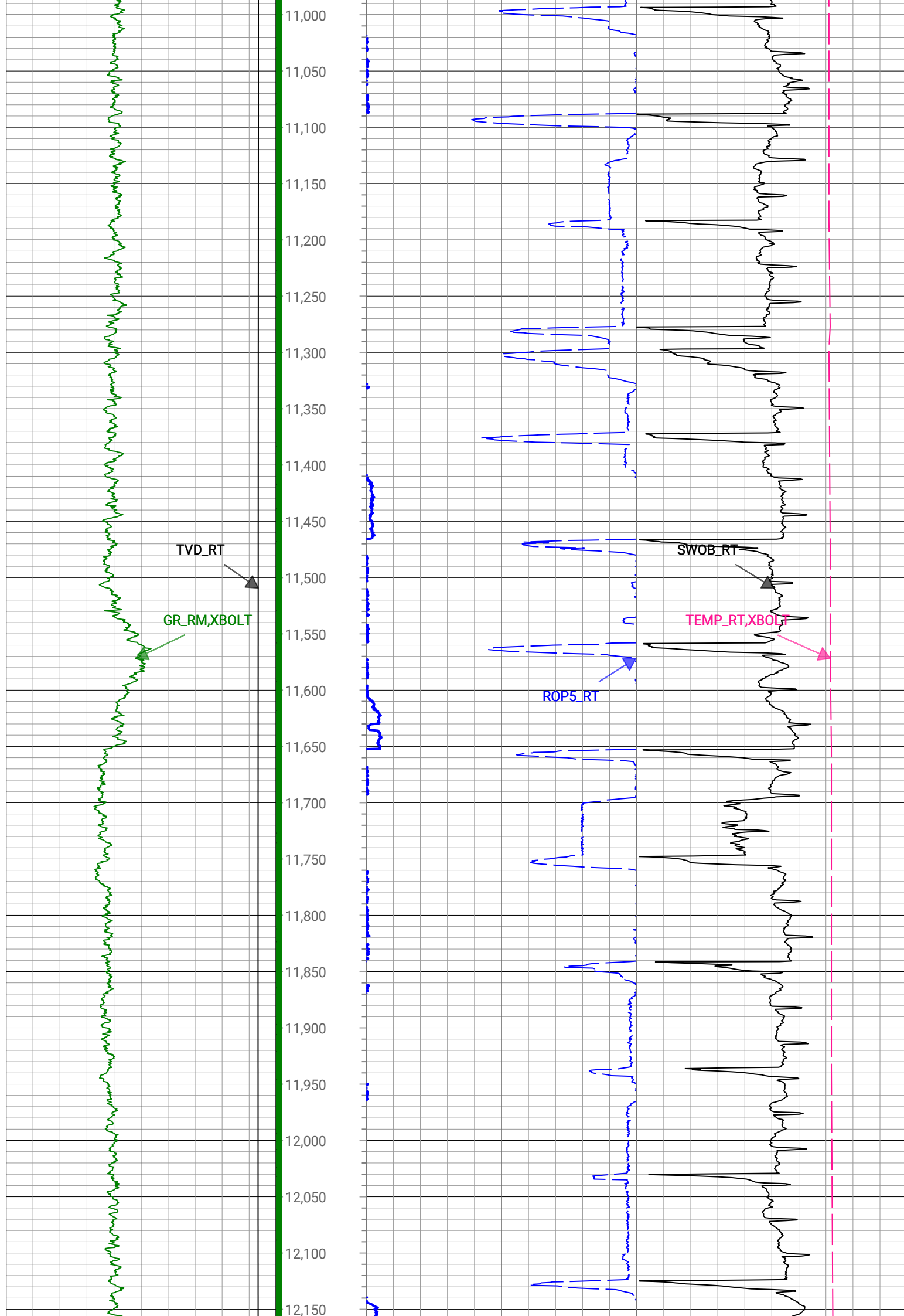


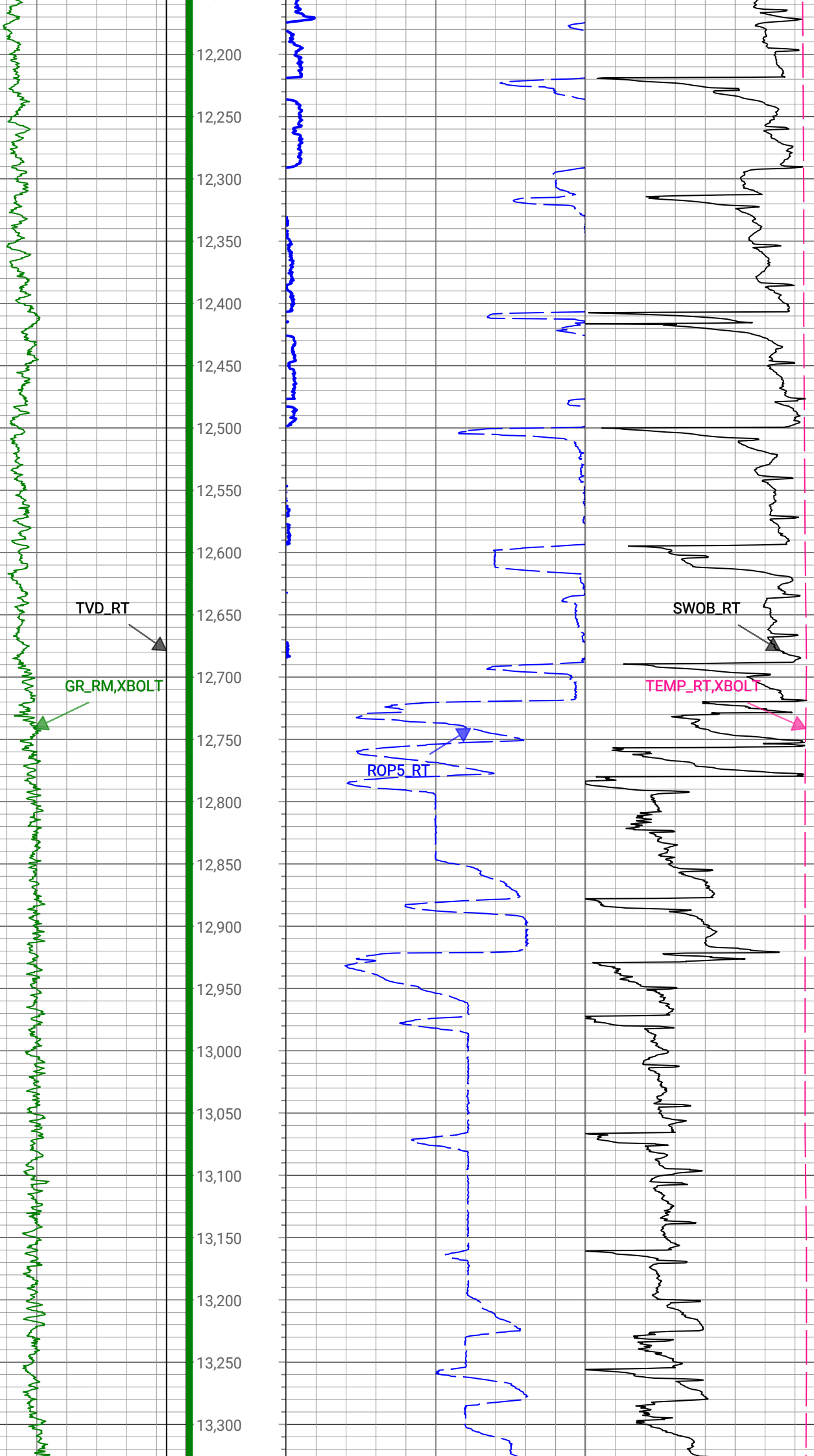


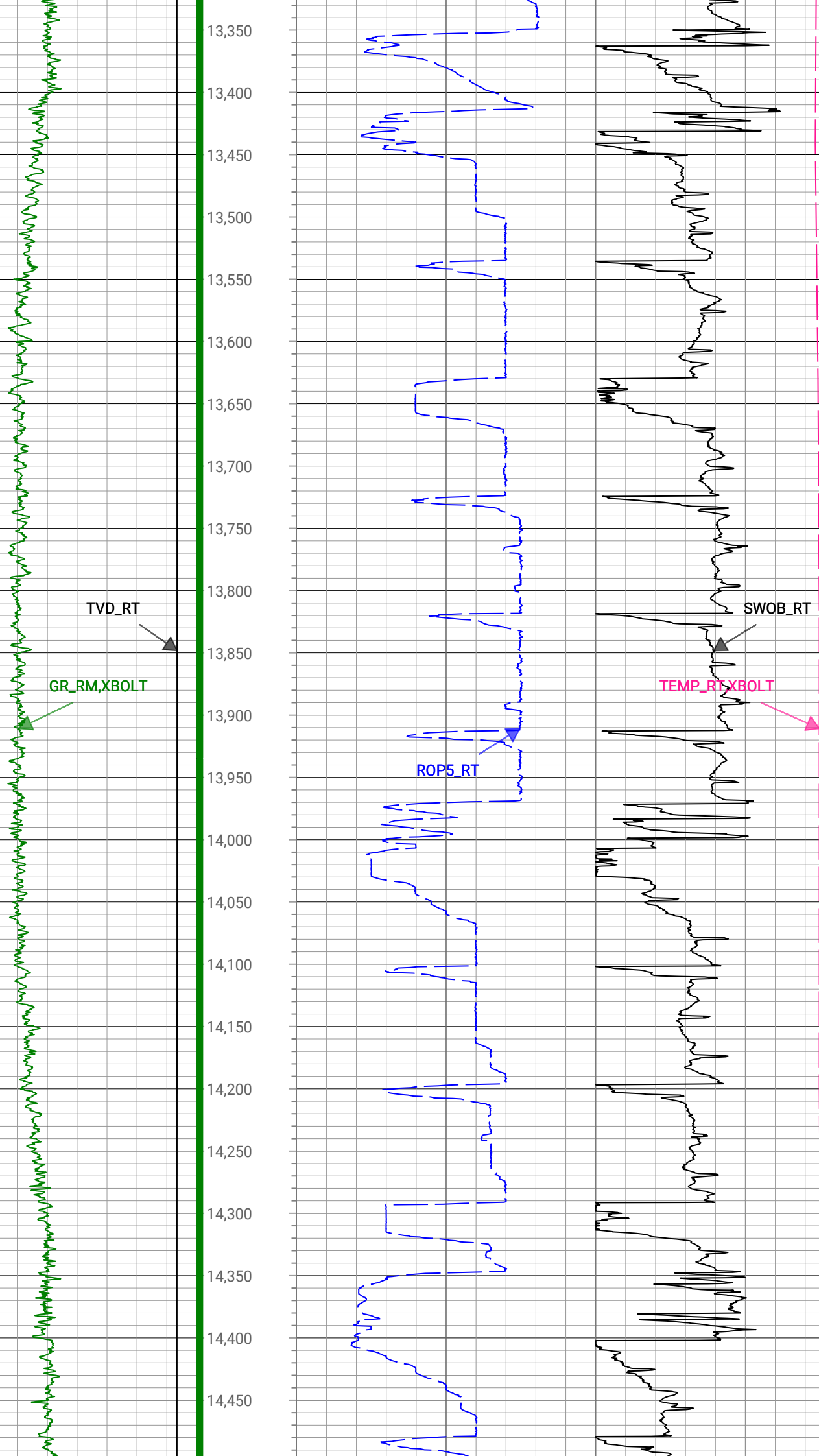


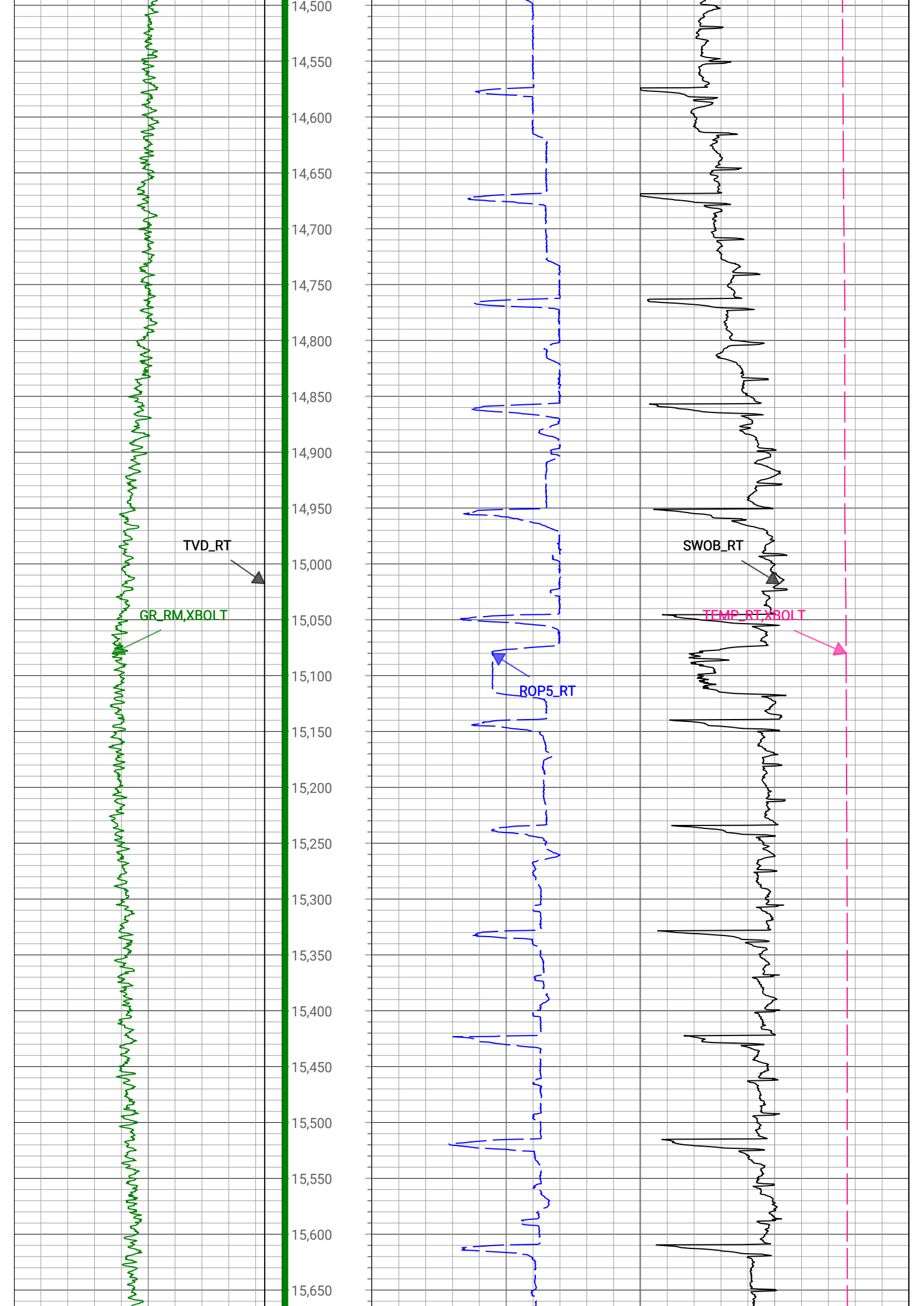


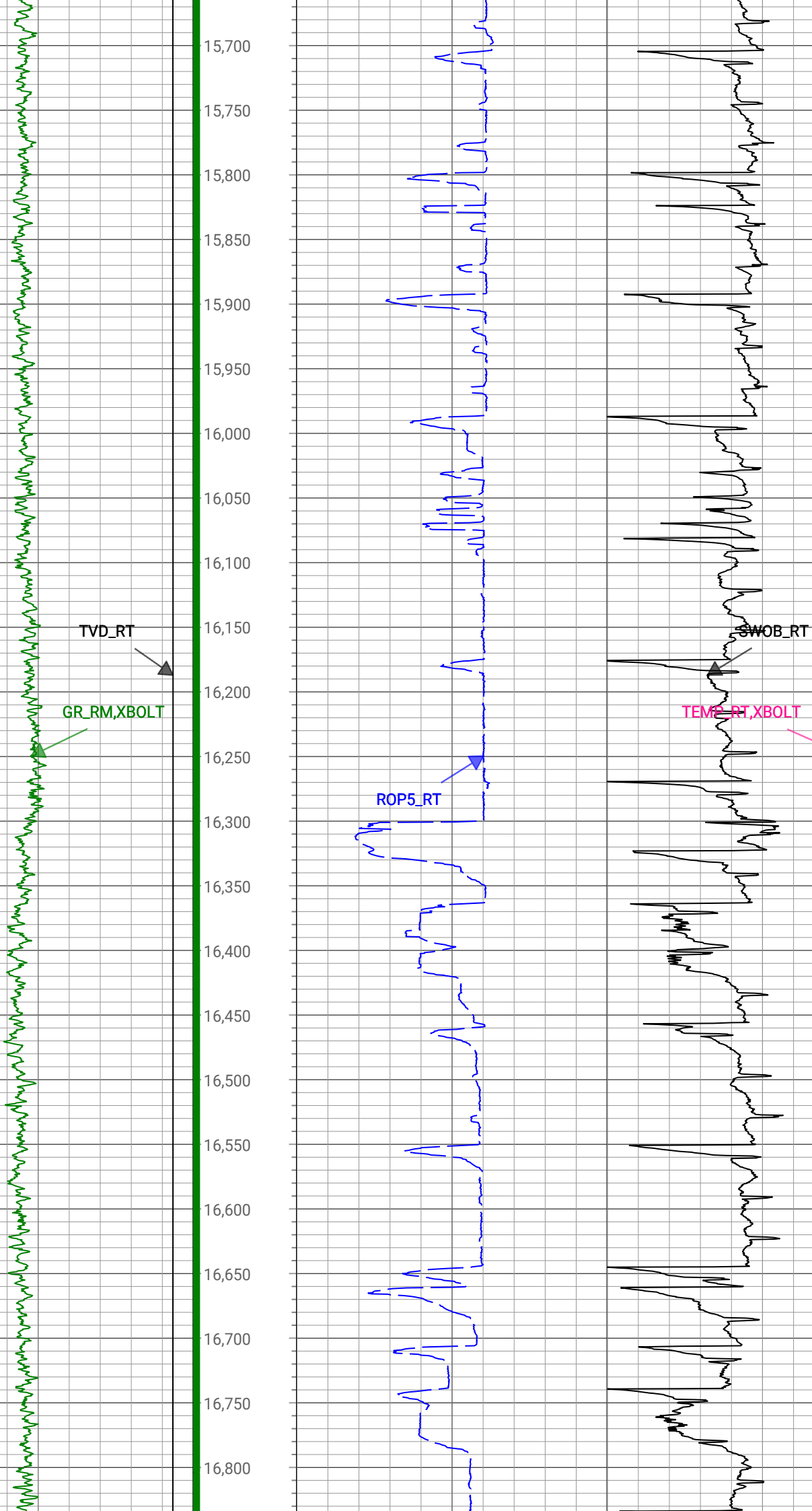


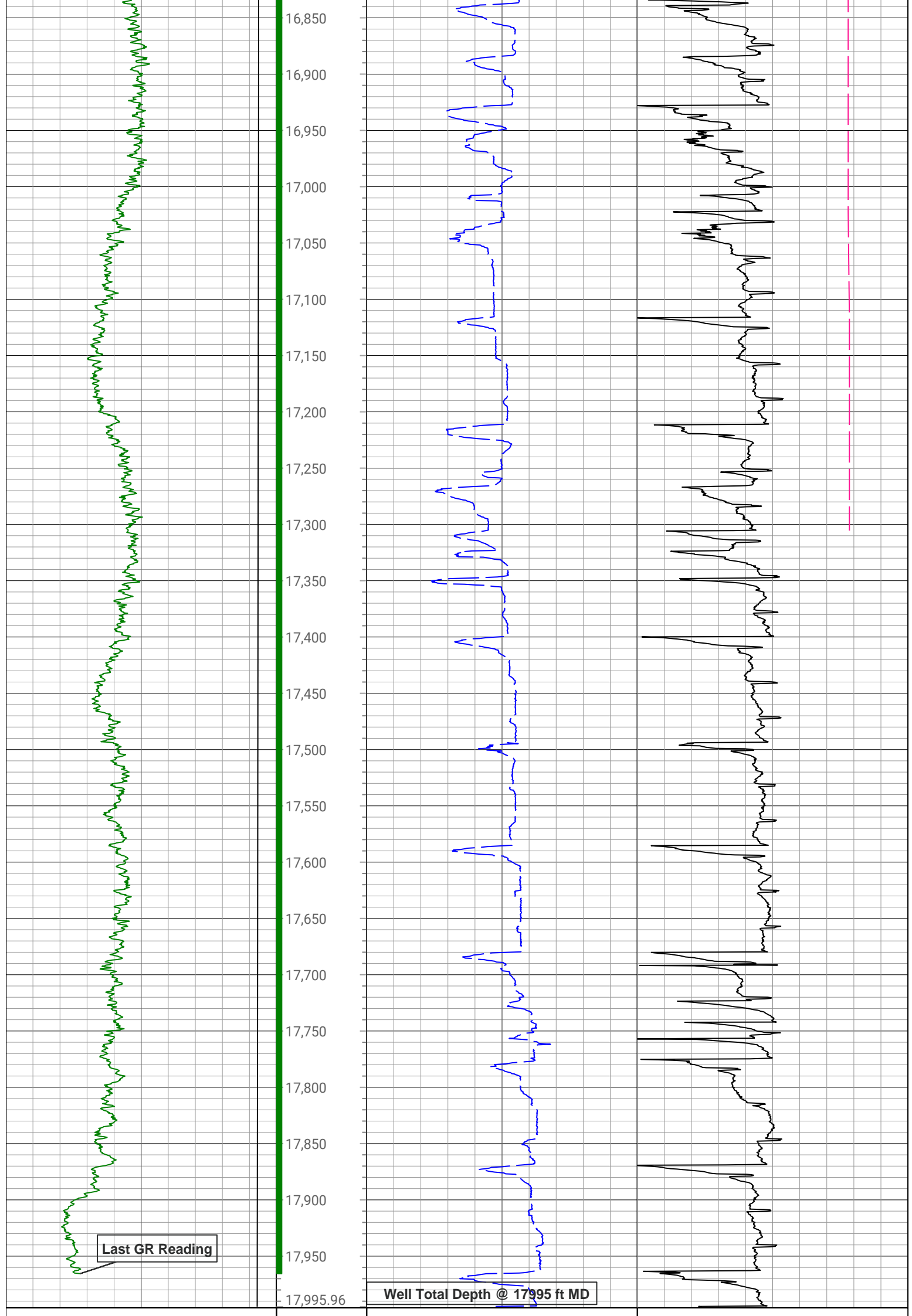












0	GR_RM,XBOLT	300	Depth (ft)	0	ROP5_RT	500	0	TEMP_RT,XBOLT	350
gAPI, Borehole				ft/h, Borehole			degF, Borehole		
1,500	TVD_RT	7,500					0	SWOB_RT	50
ft, Borehole							1000 lbf, Borehole		
Description: XBOLT GAMMA RAY Format: XBOLT_RT VS RM_PDC Index Scale: 1in/100ft Index Unit: ft Index Type: Measured Depth									
Creation Date: 21-Apr-2022									

Survey Record

Survey Calculation								
North Reference:		True North						
Tie In Point								
Measured Depth:		0(ft)	Inclination:		0(deg)	Azimuth:		0(deg)
True Vertical Depth:		0(ft)	North Displacement:		0(ft)	East Displacement:		0(ft)

D&I Inits - Run - 1			
Geomagnetic Model:	HDGM 2022	Geomagnetic Date:	15-Apr-2022 18:00:00
Location B:	51953(nT)	Location G:	999.024(mgn)
Magnetic Dip:	66.5(deg)	Magnetic Dec:	7.359(deg)
Total Correction:	7.359		

MD(ft)	Incl(deg)	Azim(deg)	TVD(ft)	V Sec(ft)	N/-S(ft)	E/-W(ft)	DLS (deg/100ft)	Closure Distance (ft)	Closure Azimuth (deg)	Tool Type
0	0	0	0	0.00	0	0	0.00			TIP
161.5	0.4	136.2	161.5	0.47	-0.41	0.39	0.25	0.56	136.2	MWD
252.5	0.3	169.6	252.5	0.83	-0.87	0.65	0.24	1.09	143.12	MWD
344.5	0.4	247.3	344.5	0.66	-1.23	0.4	0.48	1.29	161.99	MWD
433.5	0.4	248.6	433.49	0.15	-1.46	-0.18	0.01	1.48	186.84	MWD
522.5	2.5	221.9	522.46	-1.04	-3.02	-1.76	2.42	3.5	210.23	MWD
612.5	4.6	219.6	612.28	-3.62	-7.27	-5.37	2.34	9.04	216.49	MWD
702.5	6.4	215.7	701.87	-7.2	-14.12	-10.6	2.04	17.66	216.9	MWD
791.5	8.4	221.3	790.12	-12.22	-23.03	-17.79	2.39	29.1	217.68	MWD
880.5	9.9	221	877.99	-18.93	-33.69	-27.1	1.69	43.24	218.81	MWD
970.5	10.9	221.1	966.51	-26.6	-45.94	-37.77	1.11	59.47	219.42	MWD
1059.5	12.4	224.8	1053.67	-35.64	-59.07	-50.03	1.88	77.41	220.27	MWD
1149.5	13.6	222.9	1141.36	-46.06	-73.67	-64.05	1.42	97.62	221	MWD
1238.5	16.3	224.3	1227.34	-57.82	-90.28	-79.89	3.06	120.56	221.51	MWD
1328.5	18.2	222.5	1313.29	-71.36	-109.68	-98.21	2.19	147.23	221.84	MWD
1417.5	20.9	220.8	1397.15	-85.68	-131.95	-117.98	3.1	177.01	221.8	MWD
1506.5	21.9	220.1	1480.02	-100.72	-156.67	-139.04	1.16	209.47	221.59	MWD
1650.5	22.2	218.7	1613.48	-124.88	-198.44	-173.35	0.42	263.5	221.14	MWD
1784	20.09	215.36	1737.99	-144.65	-236.83	-202.39	1.82	311.53	220.52	Manual
1879	22.7	215.56	1826.44	-157.98	-265.05	-222.5	2.75	346.06	220.01	Manual
1973	23.25	218.56	1912.99	-173.03	-294.32	-244.61	1.38	382.7	219.73	Manual
2068	24.25	221.35	1999.94	-190.48	-323.62	-269.19	1.58	420.95	219.75	Manual
2163	26.62	221.24	2085.73	-209.91	-354.28	-296.11	2.5	461.73	219.89	Manual
2257	25.95	223.78	2170.01	-230.49	-384.96	-324.23	1.39	503.31	220.11	Manual
2352	26.05	223.95	2255.4	-251.95	-414.99	-353.09	0.13	544.87	220.39	Manual
2447	25.74	221.7	2340.86	-272.68	-445.41	-381.29	1.08	586.32	220.56	Manual
2541	25.37	220.74	2425.66	-291.95	-475.91	-408.01	0.59	626.87	220.61	Manual
2636	24.38	222.45	2511.85	-311.15	-505.8	-434.53	1.29	666.82	220.67	Manual
2730	26.42	223.7	2596.76	-331.46	-535.24	-462.07	2.24	707.1	220.8	Manual

2825	26.17	223.35	2681.93	-352.93	-565.75	-491.05	0.31	749.14	220.96	Manual
2920	25.27	223.93	2767.52	-374.03	-595.59	-519.5	0.98	790.32	221.1	Manual
3014	24.92	221.8	2852.65	-393.98	-624.8	-546.62	1.03	830.16	221.18	Manual
3109	25.14	224.17	2938.73	-414.16	-654.2	-574.03	1.08	870.33	221.27	Manual
3204	26.48	224.92	3024.25	-435.89	-683.67	-603.04	1.45	911.63	221.41	Manual
3299	25.69	222.26	3109.57	-457.25	-713.91	-631.85	1.49	953.36	221.51	Manual
3394	26.74	226.31	3194.81	-479.15	-743.91	-661.15	2.18	995.25	221.63	Manual
3489	25.47	224.07	3280.12	-501.52	-773.35	-690.82	1.69	1036.97	221.77	Manual
3583	27.01	224.42	3364.43	-523.17	-803.12	-719.82	1.65	1078.49	221.87	Manual
3678	26.62	225.02	3449.21	-545.8	-833.57	-749.97	0.5	1121.29	221.98	Manual
3772	26.36	226.12	3533.34	-568.46	-862.93	-779.91	0.59	1163.14	222.11	Manual
3867	26.71	226.95	3618.34	-592	-892.12	-810.71	0.54	1205.46	222.26	Manual
3961	27.2	223.47	3702.13	-614.79	-922.13	-840.93	1.76	1248	222.36	Manual
4056	26.73	224.78	3786.8	-637.15	-953.06	-870.92	0.8	1291.05	222.42	Manual
4151	26.62	223.33	3871.69	-659.24	-983.7	-900.57	0.69	1333.68	222.47	Manual
4245	26.64	225.23	3955.72	-681.21	-1013.86	-929.98	0.91	1375.79	222.53	Manual
4340	26.24	222.93	4040.79	-703.14	-1044.24	-959.41	1.16	1418.07	222.58	Manual
4435	25.01	219.74	4126.45	-722.75	-1075.06	-986.55	1.95	1459.13	222.54	Manual
4529	25.79	219.99	4211.36	-741.07	-1106.01	-1012.4	0.84	1499.4	222.47	Manual
4624	26.07	220.19	4296.8	-760.08	-1137.79	-1039.15	0.31	1540.91	222.41	Manual
4719	26.46	218.91	4381.99	-778.97	-1170.21	-1065.92	0.72	1582.9	222.33	Manual
4814	26.43	217.73	4467.05	-797.16	-1203.4	-1092.15	0.55	1625.1	222.23	Manual
4909	25.91	220.98	4552.31	-815.84	-1235.79	-1118.7	1.6	1666.93	222.15	Manual
5003	26.55	219.56	4636.63	-834.97	-1267.49	-1145.55	0.95	1708.45	222.11	Manual
5098	25.86	218.79	4721.87	-853.58	-1300.01	-1172.05	0.81	1750.35	222.04	Manual
5193	25.88	223.81	4807.36	-873.31	-1331.12	-1199.38	2.31	1791.76	222.02	Manual
5287	25.03	222.21	4892.24	-893.61	-1360.66	-1226.95	1.16	1832.15	222.04	Manual
5382	25.18	223.33	4978.26	-913.71	-1390.24	-1254.32	0.52	1872.46	222.06	Manual
5477	23.7	219.91	5064.75	-932.65	-1419.59	-1280.44	2.15	1911.74	222.05	Manual
5571	24.29	221.12	5150.63	-950.4	-1448.65	-1305.27	0.82	1949.95	222.02	Manual
5666	25.03	222.28	5236.96	-969.53	-1478.24	-1331.64	0.93	1989.59	222.01	Manual
5761	25.5	223.69	5322.88	-989.89	-1507.89	-1359.29	0.8	2030.13	222.03	Manual
5856	25.1	222.79	5408.76	-1010.43	-1537.47	-1387.1	0.58	2070.72	222.06	Manual
5950	24.34	221.31	5494.15	-1029.61	-1566.65	-1413.44	1.04	2110.02	222.06	Manual
6045	23.79	221.41	5580.89	-1048.1	-1595.73	-1439.03	0.58	2148.76	222.04	Manual
6140	25.16	221.88	5667.35	-1067.07	-1625.13	-1465.19	1.46	2188.11	222.04	Manual
6234	25.6	223.34	5752.28	-1087.07	-1654.78	-1492.47	0.81	2228.4	222.05	Manual
6329	25.01	222.47	5838.17	-1107.41	-1684.52	-1520.11	0.73	2269	222.06	Manual
6424	25.67	223.01	5924.03	-1127.67	-1714.38	-1547.71	0.74	2309.65	222.08	Manual
6519	25.43	222.27	6009.74	-1148.03	-1744.52	-1575.46	0.42	2350.62	222.08	Manual
6614	25.02	222.8	6095.68	-1168.08	-1774.35	-1602.83	0.49	2391.11	222.09	Manual
6708	24.73	222.67	6180.96	-1187.78	-1803.4	-1629.66	0.31	2430.65	222.1	Manual
6803	19.76	205.82	6268.95	-1201.28	-1832.51	-1650.16	8.46	2465.99	222	Manual
6897	19.32	183.05	6357.66	-1202.21	-1862.39	-1657.92	8.07	2493.43	221.68	Manual
6992	20.6	161.92	6447.07	-1190.93	-1894.01	-1653.56	7.67	2514.27	221.12	Manual
7087	23.2	139.9	6535.36	-1167.36	-1924.27	-1636.29	9.01	2525.92	220.38	Manual
7181	26.73	122.35	6620.68	-1132.59	-1949.78	-1606.46	8.69	2526.33	219.49	Manual
7276	33.21	117.44	6702.94	-1087.22	-1973.23	-1565.27	7.29	2518.67	218.42	Manual
7370	40.18	112.16	6778.29	-1032.3	-1996.57	-1514.26	8.13	2505.85	217.18	Manual
7465	47.36	109.54	6846.85	-967.27	-2019.85	-1452.86	7.79	2488.09	215.73	Manual

7559	54.99	104.83	6905.76	-894.32	-2041.3	-1382.94	9	2465.65	214.12	Manual
7654	62.02	101.38	6955.37	-813.39	-2059.56	-1304.09	8.02	2437.72	212.34	Manual
7749	63.9	101.2	6998.56	-728.81	-2076.13	-1221.12	1.99	2408.62	210.46	Manual
7843	72.85	100.59	7033.16	-641.56	-2092.61	-1135.39	9.54	2380.79	208.48	Manual
7938	80.39	95.75	7055.14	-549.55	-2105.67	-1044	9.36	2350.27	206.37	Manual
8033	85.43	92.17	7066.87	-456.46	-2112.16	-949.99	6.49	2315.97	204.22	Manual
8127	86.65	85.25	7073.37	-365.58	-2110.05	-856.3	7.46	2277.18	202.09	Manual
8222	88.74	85.17	7077.19	-275.13	-2102.12	-761.72	2.2	2235.88	199.92	Manual
8317	88.64	85.59	7079.36	-184.53	-2094.47	-667.05	0.45	2198.13	197.67	Manual
8411	89.1	87.02	7081.22	-94.45	-2088.42	-573.27	1.6	2165.67	195.35	Manual
8506	89.08	88.76	7082.72	-2.68	-2084.92	-478.35	1.83	2139.09	192.92	Manual
8696	88.63	89.4	7086.52	181.82	-2081.87	-288.41	0.41	2101.75	187.89	Manual
8790	88.65	89.61	7088.75	273.26	-2081.06	-194.44	0.22	2090.12	185.34	Manual
8885	88.65	89.16	7090.99	365.62	-2080.04	-99.47	0.47	2082.42	182.74	Manual
9074	87.94	89.06	7096.61	549.13	-2077.11	89.42	0.38	2079.03	177.53	Manual
9169	87.94	88.1	7100.03	641.14	-2074.75	184.33	1.01	2082.92	174.92	Manual
9264	87.78	88.35	7103.58	732.99	-2071.81	279.22	0.31	2090.54	172.32	Manual
9358	87.89	88.48	7107.13	823.96	-2069.21	373.11	0.18	2102.58	169.78	Manual
9453	87.7	88.63	7110.78	915.95	-2066.82	468.01	0.25	2119.15	167.24	Manual
9548	89.76	88.44	7112.89	1007.97	-2064.39	562.95	2.18	2139.77	164.75	Manual
9643	89.9	87.53	7113.17	1099.79	-2061.05	657.89	0.97	2163.51	162.3	Manual
9737	90.17	88.87	7113.11	1190.73	-2058.1	751.84	1.45	2191.13	159.93	Manual
9831	90.52	87.53	7112.55	1281.68	-2055.15	845.79	1.47	2222.38	157.63	Manual
9925	90.11	88.63	7112.03	1372.57	-2052	939.74	1.25	2256.94	155.39	Manual
10114	90.69	90.3	7110.71	1556.42	-2050.23	1128.72	0.94	2340.4	151.17	Manual
10208	90.17	91.16	7110	1648.32	-2051.43	1222.71	1.07	2388.17	149.2	Manual
10302	90.81	90.29	7109.2	1740.22	-2052.62	1316.69	1.15	2438.63	147.32	Manual
10489	89.96	91.31	7107.94	1923.09	-2055.23	1503.67	0.71	2546.56	143.81	Manual
10584	90.4	90.99	7107.65	2016.12	-2057.14	1598.65	0.57	2605.28	142.15	Manual
10679	90.91	89.96	7106.56	2108.9	-2057.92	1693.64	1.21	2665.23	140.55	Manual
10772	90.61	90.28	7105.33	2199.61	-2058.12	1786.63	0.47	2725.42	139.04	Manual
10867	90.18	90.49	7104.67	2292.37	-2058.76	1881.62	0.5	2789.08	137.57	Manual
10962	90.3	90.54	7104.27	2385.17	-2059.61	1976.62	0.14	2854.65	136.18	Manual
11056	89.96	90.67	7104.06	2477.03	-2060.6	2070.61	0.39	2921.22	134.86	Manual
11246	90.78	90.07	7102.83	2662.54	-2061.83	2260.6	0.53	3059.65	132.37	Manual
11434	90.35	90.75	7100.98	2846.11	-2063.18	2448.59	0.43	3201.92	130.12	Manual
11623	90.86	90.2	7098.98	3030.71	-2064.74	2637.57	0.4	3349.62	128.05	Manual
11717	90.64	89.52	7097.75	3122.3	-2064.51	2731.56	0.76	3423.98	127.08	Manual
11811	90.2	89.7	7097.06	3213.79	-2063.87	2825.55	0.51	3499.05	126.15	Manual
11905	89.6	90.39	7097.23	3305.46	-2063.95	2919.55	0.97	3575.43	125.26	Manual
11999	90.1	89.83	7097.47	3397.14	-2064.13	3013.55	0.8	3652.69	124.41	Manual
12093	89.36	90.98	7097.92	3488.93	-2064.79	3107.55	1.45	3730.98	123.6	Manual
12188	89.25	91.17	7099.07	3581.92	-2066.57	3202.52	0.23	3811.41	122.83	Manual
12282	90.24	88.93	7099.49	3673.58	-2066.66	3296.51	2.61	3890.77	122.08	Manual
12376	89.65	90.36	7099.58	3765.09	-2066.07	3390.51	1.65	3970.42	121.36	Manual
12469	90.41	89.45	7099.53	3855.73	-2065.92	3483.51	1.27	4050.04	120.67	Manual
12563	90.13	89.59	7099.09	3947.19	-2065.13	3577.5	0.33	4130.78	120	Manual
12752	89.77	90.2	7099.25	4131.38	-2064.79	3766.5	0.37	4295.33	118.73	Manual
12940	89.82	89.29	7099.92	4314.48	-2063.95	3954.5	0.48	4460.71	117.56	Manual
13034	89.62	90.06	7100.38	4406	-2063.42	4048.49	0.85	4544.01	117.01	Manual

13223	89.82	89.25	7101.31	4590.01	-2062.28	4237.49	0.44	4712.67	115.95	Manual
13317	89.47	90.12	7101.89	4681.54	-2061.76	4331.48	1	4797.14	115.45	Manual
13412	89.26	91.2	7102.94	4774.39	-2062.86	4426.47	1.16	4883.54	114.99	Manual
13506	89.62	90.63	7103.86	4866.35	-2064.36	4520.45	0.72	4969.51	114.54	Manual
13600	89.55	90.21	7104.54	4958.15	-2065.05	4614.45	0.45	5055.45	114.11	Manual
13694	89.93	91.97	7104.97	5050.17	-2066.83	4708.42	1.92	5142.09	113.7	Manual
13789	90.03	91.73	7105	5143.42	-2069.9	4803.37	0.27	5230.38	113.31	Manual
13883	89.9	92.54	7105.06	5235.78	-2073.4	4897.31	0.87	5318.14	112.95	Manual
13977	89.97	91.69	7105.17	5328.14	-2076.87	4991.24	0.91	5406.1	112.59	Manual
14072	90.4	90.08	7104.86	5421.07	-2078.34	5086.23	1.75	5494.47	112.23	Manual
14166	90.6	89.96	7104.04	5512.72	-2078.37	5180.23	0.25	5581.61	111.86	Manual
14261	90.6	90.34	7103.04	5605.39	-2078.62	5275.22	0.4	5669.97	111.51	Manual
14356	89.97	90.73	7102.57	5698.2	-2079.51	5370.21	0.78	5758.78	111.17	Manual
14450	90.15	90.19	7102.47	5790.01	-2080.26	5464.21	0.61	5846.8	110.84	Manual
14544	90.03	90.01	7102.33	5881.69	-2080.43	5558.21	0.23	5934.8	110.52	Manual
14639	90.17	90.04	7102.16	5974.32	-2080.47	5653.21	0.15	6023.88	110.2	Manual
14733	90.18	90.53	7101.87	6066.07	-2080.93	5747.21	0.52	6112.34	109.9	Manual
14827	90.22	89.76	7101.54	6157.77	-2081.17	5841.21	0.82	6200.88	109.61	Manual
14921	90.07	90.3	7101.31	6249.42	-2081.22	5935.21	0.6	6289.53	109.32	Manual
15015	90.51	89.43	7100.83	6341.02	-2081	6029.2	1.04	6378.23	109.04	Manual
15109	89.9	90.62	7100.49	6432.67	-2081.04	6123.2	1.42	6467.17	108.77	Manual
15297	89.59	91.85	7101.33	6616.82	-2085.09	6311.15	0.67	6646.67	108.28	Manual
15391	89.83	91.64	7101.81	6709.05	-2087.96	6405.11	0.34	6736.83	108.06	Manual
15485	89.61	91.78	7102.27	6801.28	-2090.76	6499.06	0.28	6827.09	107.83	Manual
15580	89.72	91.38	7102.82	6894.45	-2093.38	6594.02	0.44	6918.34	107.61	Manual
15674	89.63	91.68	7103.35	6986.62	-2095.89	6687.99	0.33	7008.71	107.4	Manual
15862	89.63	91.29	7104.57	7170.93	-2100.76	6875.92	0.21	7189.68	106.99	Manual
16050	89.48	91.95	7106.03	7355.32	-2106.08	7063.84	0.36	7371.12	106.6	Manual
16144	89.78	90.49	7106.64	7447.39	-2108.08	7157.81	1.59	7461.79	106.41	Manual
16332	89.69	91.14	7107.51	7631.25	-2110.75	7345.79	0.35	7643.03	106.03	Manual
16426	90.52	90.22	7107.33	7723.14	-2111.87	7439.78	1.32	7733.72	105.85	Manual
16520	90.64	89.47	7106.38	7814.72	-2111.61	7533.78	0.81	7824.11	105.66	Manual
16614	90.67	89.29	7105.31	7906.13	-2110.6	7627.77	0.19	7914.38	105.47	Manual
16708	90.5	90.25	7104.35	7997.68	-2110.22	7721.76	1.04	8004.91	105.28	Manual
16802	90.53	87.05	7103.5	8088.8	-2108	7815.72	3.4	8095.01	105.09	Manual
16897	90.6	86.88	7102.57	8180.16	-2102.97	7910.58	0.19	8185.34	104.89	Manual
16991	91.81	85.42	7100.59	8270.18	-2096.67	8004.34	2.02	8274.39	104.68	Manual
17085	91.61	87.8	7097.78	8360.38	-2091.11	8098.13	2.54	8363.76	104.48	Manual
17273	91.47	88.04	7092.73	8541.97	-2084.29	8285.94	0.15	8544.06	104.12	Manual
17368	91.75	87.25	7090.06	8633.6	-2080.39	8380.82	0.88	8635.17	103.94	Manual
17462	91.68	87.65	7087.25	8724.19	-2076.21	8474.68	0.43	8725.3	103.77	Manual
17650	91.49	88.15	7082.05	8905.75	-2069.32	8662.48	0.28	8906.22	103.44	Manual
17839	91.82	87.39	7076.59	9088.17	-2061.97	8851.26	0.44	9088.26	103.11	Manual
17964	91.82	87.57	7072.62	9208.64	-2056.48	8976.08	0.14	9208.64	102.9	Manual
17995	91.82	87.57	7071.63	9238.52	-2055.16	9007.03	0	9238.52	102.85	Manual

Company:	PDC Energy Inc
Well:	Bost Farm 16N-8A-L
Field Name:	Wattenberg
Country Name:	United States

State Name: Colorado

County Name: Weld



XBOLT GAMMA RAY
1in/100ft Measured Depth
Final Print
Recorded Mode