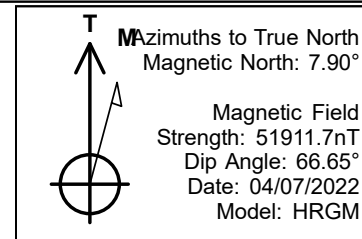


PDC Energy Inc. DJ Basin

Bost Farm 16C-8-L
 Bost Farms 5-7 Pad SEC.7-T5N-R66W
 North American Datum 1983 , US State Plane 1983, Colorado Northern Zone
 Ground Elevation: 4874.0
 +N/-S +E/-W Northing Easting Longitude Slot
 0.0 0.0 1394603.40 3187036.72 40.414644 -104.828287
 Patterson 272 - RKB 28.5WELL @ 4902 ft (Patterson 272 - RKB 28')

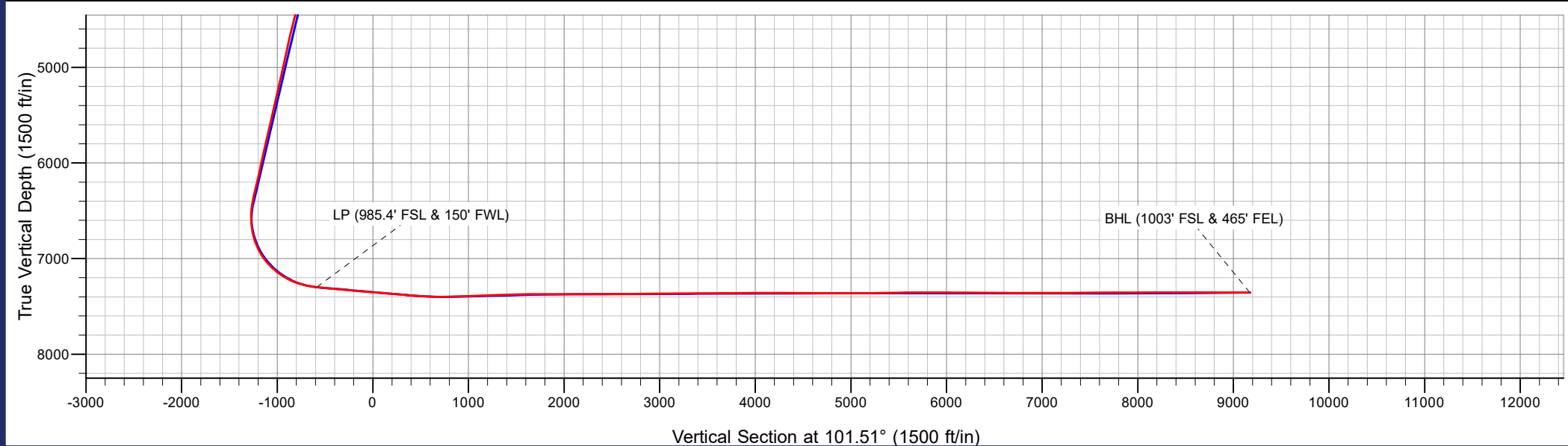
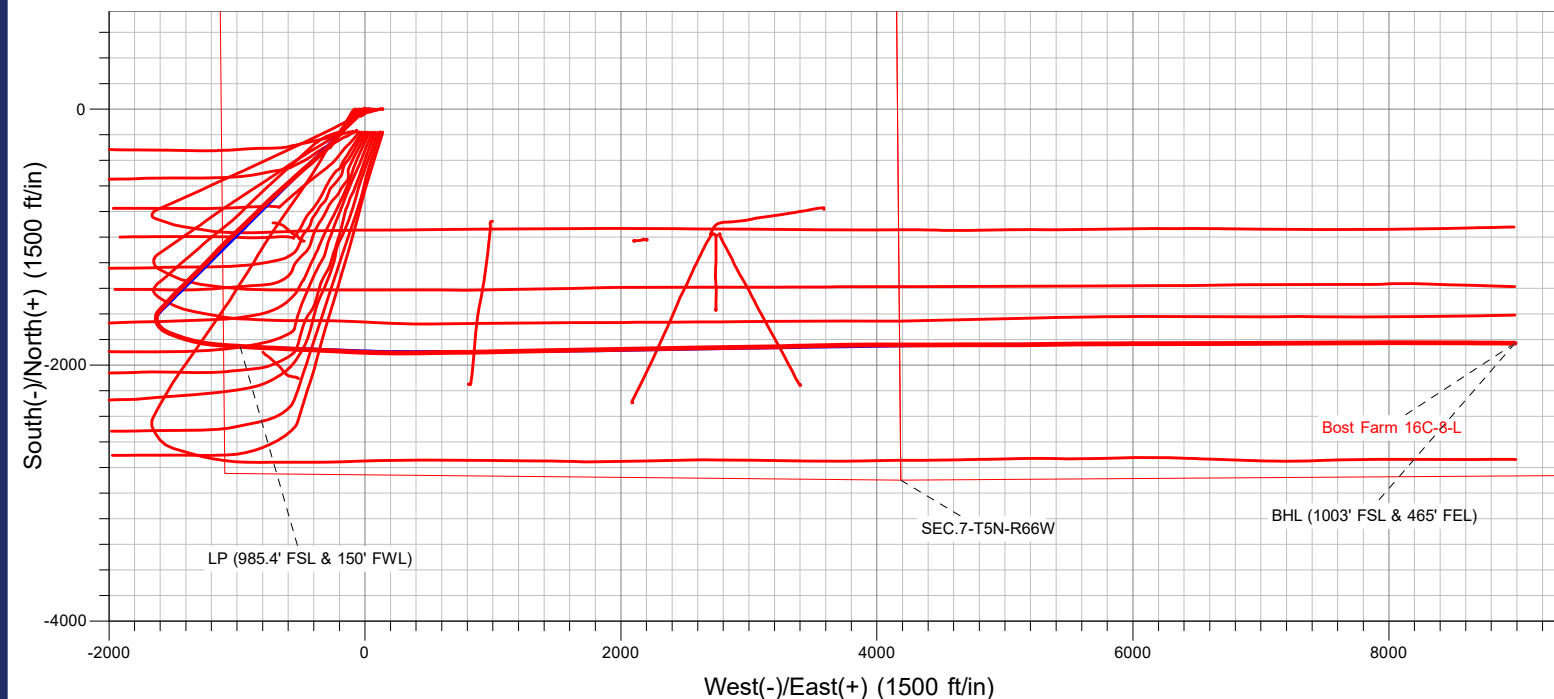


Bost Farms 5-7 Pad SEC.7-T5N-R66W
 Bost Farm 16C-8-L
 16C-8-L As Drilled
 15:18, May 13 2022



ANNOTATIONS		
MD	TVD	Annotation
8141.6	7297.7	LP (985.4' FSL & 150' FWL)
18111.0	7354.4	BHL (1003' FSL & 465' FEL)

FINAL SURVEY
Projected Bottom Hole Location
18111' MD / 7354.4' TVD
89.85° INC / 90.87° AZM
1003' FSL / 465' FEL





PDC Energy Inc. DJ Basin

SEC.7-T5N-R66W

Bost Farms 5-7 Pad SEC.7-T5N-R66W

Bost Farm 16C-8-L

Bost Farms 16C-8-L Wellbore #1

Survey: Surface

Standard Survey Report

13 May, 2022



Company:	PDC Energy Inc. DJ Basin	Local Co-ordinate Reference:	Well Bost Farm 16C-8-L
Project:	SEC.7-T5N-R66W	TVD Reference:	WELL @ 4902 ft (Patterson 272 - RKB 28')
Site:	Bost Farms 5-7 Pad SEC.7-T5N-R66W	MD Reference:	WELL @ 4902 ft (Patterson 272 - RKB 28')
Well:	Bost Farm 16C-8-L	North Reference:	True
Wellbore:	Bost Farms 16C-8-L Wellbore #1	Survey Calculation Method:	Minimum Curvature
Design:	16C-8-L_As Drilled	Database:	US_EDM

Project	SEC.7-T5N-R66W, Weld County, Co		
Map System:	US State Plane 1983	System Datum:	Mean Sea Level
Geo Datum:	North American Datum 1983		
Map Zone:	Colorado Northern Zone		Using geodetic scale factor

Site	Bost Farms 5-7 Pad SEC.7-T5N-R66W				
Site Position:		Northing:	1,394,603.55 usft	Latitude:	40.414641
From:	Lat/Long	Easting:	3,187,178.01 usft	Longitude:	-104.827780
Position Uncertainty:	0.0 ft	Slot Radius:	13-3/16 "	Grid Convergence:	0.43 °

Well	Bost Farm 16C-8-L					
Well Position	+N/-S	0.0 ft	Northing:	1,394,603.40 usft	Latitude:	40.414644
	+E/-W	0.0 ft	Easting:	3,187,036.72 usft	Longitude:	-104.828288
Position Uncertainty		0.0 ft	Wellhead Elevation:	ft	Ground Level:	4,874.0 ft

Wellbore	Bost Farms 16C-8-L Wellbore #1				
Magnetics	Model Name	Sample Date	Declination (°)	Dip Angle (°)	Field Strength (nT)
	HRGM	04/07/2022	7.90	66.65	51,911.73056577

Design	16C-8-L_As Drilled				
Audit Notes:					
Version:	1.0	Phase:	ACTUAL	Tie On Depth:	0.0
Vertical Section:	Depth From (TVD) (ft)	+N/-S (ft)	+E/-W (ft)	Direction (°)	
	0.0	0.0	0.0	101.51	

Survey Program	Date	05/13/2022			
From (ft)	To (ft)	Survey (Wellbore)	Tool Name	Description	
161.5	18,111.0	Surface (Bost Farms 16C-8-L Wellbore #1	MWD+IFR+MS	MWD + IFR + Multi Station	

Survey										
Measured Depth (ft)	Inclination (°)	Azimuth (°)	Vertical Depth (ft)	+N/-S (ft)	+E/-W (ft)	Vertical Section (ft)	Dogleg Rate (°/100usft)	Build Rate (°/100usft)	Turn Rate (°/100usft)	
0.0	0.00	0.00	0.0	0.0	0.0	0.0	0.00	0.00	0.00	
161.5	0.40	257.50	161.5	-0.1	-0.6	-0.5	0.25	0.25	0.00	
252.5	0.60	259.10	252.5	-0.3	-1.3	-1.2	0.22	0.22	1.76	
344.5	0.60	273.50	344.5	-0.3	-2.3	-2.2	0.16	0.00	15.65	
433.5	0.40	243.60	433.5	-0.5	-3.0	-2.9	0.36	-0.22	-33.60	
522.5	0.70	251.60	522.5	-0.8	-3.8	-3.6	0.35	0.34	8.99	
612.5	1.30	247.30	612.5	-1.3	-5.3	-4.9	0.67	0.67	-4.78	
702.5	3.30	233.30	702.4	-3.3	-8.3	-7.5	2.29	2.22	-15.56	
791.5	5.40	226.40	791.1	-7.7	-13.4	-11.6	2.43	2.36	-7.75	
880.5	6.30	231.20	879.7	-13.6	-20.2	-17.1	1.15	1.01	5.39	

Company:	PDC Energy Inc. DJ Basin	Local Co-ordinate Reference:	Well Bost Farm 16C-8-L
Project:	SEC.7-T5N-R66W	TVD Reference:	WELL @ 4902 ft (Patterson 272 - RKB 28')
Site:	Bost Farms 5-7 Pad SEC.7-T5N-R66W	MD Reference:	WELL @ 4902 ft (Patterson 272 - RKB 28')
Well:	Bost Farm 16C-8-L	North Reference:	True
Wellbore:	Bost Farms 16C-8-L Wellbore #1	Survey Calculation Method:	Minimum Curvature
Design:	16C-8-L_As Drilled	Database:	US_EDM

Survey

Measured Depth (ft)	Inclination (°)	Azimuth (°)	Vertical Depth (ft)	+N/-S (ft)	+E/-W (ft)	Vertical Section (ft)	Dogleg Rate (°/100usft)	Build Rate (°/100usft)	Turn Rate (°/100usft)
970.5	8.80	230.50	968.9	-21.1	-29.4	-24.6	2.78	2.78	-0.78
1,059.5	10.20	230.50	1,056.7	-30.5	-40.7	-33.8	1.57	1.57	0.00
1,149.5	12.80	228.20	1,144.8	-42.2	-54.3	-44.8	2.93	2.89	-2.56
1,238.5	15.20	226.40	1,231.2	-56.8	-70.1	-57.4	2.74	2.70	-2.02
1,328.5	16.90	226.10	1,317.7	-74.0	-88.1	-71.5	1.89	1.89	-0.33
1,417.5	18.60	224.50	1,402.4	-93.1	-107.4	-86.6	1.99	1.91	-1.80
1,506.5	19.60	221.30	1,486.5	-114.4	-127.2	-101.8	1.63	1.12	-3.60
1,595.5	20.00	222.40	1,570.3	-136.9	-147.3	-117.0	0.61	0.45	1.24
1,649.5	20.00	224.50	1,621.0	-150.3	-160.0	-126.8	1.33	0.00	3.89
1,788.0	20.48	222.86	1,751.0	-184.9	-193.1	-152.3	0.54	0.35	-1.18
1,883.0	19.60	217.39	1,840.2	-209.8	-214.0	-167.9	2.18	-0.93	-5.76
1,977.0	21.91	217.91	1,928.1	-236.2	-234.4	-182.6	2.47	2.46	0.55
2,072.0	23.81	221.44	2,015.7	-264.5	-258.0	-200.0	2.47	2.00	3.72
2,167.0	23.69	222.84	2,102.6	-292.9	-283.6	-219.5	0.61	-0.13	1.47
2,261.0	23.84	227.19	2,188.7	-319.7	-310.4	-240.4	1.87	0.16	4.63
2,356.0	23.93	227.00	2,275.5	-345.8	-338.6	-262.8	0.12	0.09	-0.20
2,451.0	23.22	227.99	2,362.6	-371.5	-366.6	-285.1	0.86	-0.75	1.04
2,545.0	23.75	228.16	2,448.8	-396.5	-394.5	-307.4	0.57	0.56	0.18
2,640.0	24.23	227.81	2,535.6	-422.4	-423.2	-330.4	0.53	0.51	-0.37
2,734.0	24.37	230.16	2,621.3	-447.8	-452.3	-353.9	1.04	0.15	2.50
2,829.0	24.39	231.11	2,707.8	-472.6	-482.7	-378.7	0.41	0.02	1.00
2,924.0	23.87	227.41	2,794.5	-498.0	-512.1	-402.5	1.68	-0.55	-3.89
3,018.0	23.49	227.18	2,880.6	-523.6	-539.8	-424.5	0.42	-0.40	-0.24
3,113.0	23.84	227.01	2,967.6	-549.5	-567.8	-446.7	0.38	0.37	-0.18
3,208.0	24.05	228.22	3,054.4	-575.5	-596.2	-469.5	0.56	0.22	1.27
3,303.0	23.51	228.00	3,141.4	-601.1	-624.8	-492.3	0.58	-0.57	-0.23
3,398.0	23.79	229.34	3,228.4	-626.3	-653.4	-515.3	0.64	0.29	1.41
3,492.0	22.99	228.55	3,314.7	-650.8	-681.5	-538.0	0.91	-0.85	-0.84
3,587.0	21.77	225.92	3,402.5	-675.3	-708.1	-559.1	1.66	-1.28	-2.77
3,682.0	22.99	227.16	3,490.3	-700.2	-734.3	-579.9	1.38	1.28	1.31
3,776.0	23.22	227.08	3,576.8	-725.3	-761.4	-601.4	0.25	0.24	-0.09
3,871.0	23.27	226.00	3,664.1	-751.1	-788.6	-622.9	0.45	0.05	-1.14
3,965.0	23.35	225.55	3,750.4	-777.0	-815.2	-643.9	0.21	0.09	-0.48
4,060.0	23.34	224.87	3,837.6	-803.5	-842.0	-664.7	0.28	-0.01	-0.72
4,155.0	23.45	226.42	3,924.8	-829.9	-868.9	-685.9	0.66	0.12	1.63
4,249.0	22.47	224.27	4,011.4	-855.7	-895.0	-706.3	1.37	-1.04	-2.29
4,344.0	23.26	226.08	4,098.9	-881.7	-921.2	-726.8	1.11	0.83	1.91
4,533.0	23.16	226.67	4,272.6	-933.1	-975.1	-769.4	0.13	-0.05	0.31
4,628.0	23.07	226.64	4,360.0	-958.7	-1,002.2	-790.9	0.10	-0.09	-0.03
4,723.0	23.06	226.52	4,447.4	-984.2	-1,029.3	-812.2	0.05	-0.01	-0.13
4,818.0	23.19	225.94	4,534.8	-1,010.1	-1,056.2	-833.5	0.28	0.14	-0.61
4,913.0	22.90	225.91	4,622.2	-1,035.9	-1,082.9	-854.5	0.31	-0.31	-0.03
5,007.0	22.92	223.77	4,708.8	-1,061.9	-1,108.7	-874.6	0.89	0.02	-2.28
5,102.0	22.99	224.57	4,796.3	-1,088.4	-1,134.5	-894.6	0.34	0.07	0.84

Company:	PDC Energy Inc. DJ Basin	Local Co-ordinate Reference:	Well Bost Farm 16C-8-L
Project:	SEC.7-T5N-R66W	TVD Reference:	WELL @ 4902 ft (Patterson 272 - RKB 28')
Site:	Bost Farms 5-7 Pad SEC.7-T5N-R66W	MD Reference:	WELL @ 4902 ft (Patterson 272 - RKB 28')
Well:	Bost Farm 16C-8-L	North Reference:	True
Wellbore:	Bost Farms 16C-8-L Wellbore #1	Survey Calculation Method:	Minimum Curvature
Design:	16C-8-L_As Drilled	Database:	US_EDM

Survey

Measured Depth (ft)	Inclination (°)	Azimuth (°)	Vertical Depth (ft)	+N/-S (ft)	+E/-W (ft)	Vertical Section (ft)	Dogleg Rate (°/100usft)	Build Rate (°/100usft)	Turn Rate (°/100usft)
5,197.0	22.76	222.88	4,883.8	-1,115.1	-1,160.1	-914.3	0.73	-0.24	-1.78
5,291.0	23.00	223.43	4,970.4	-1,141.8	-1,185.1	-933.5	0.34	0.26	0.59
5,386.0	21.06	222.55	5,058.4	-1,167.8	-1,209.4	-952.1	2.07	-2.04	-0.93
5,481.0	22.07	225.19	5,146.8	-1,193.0	-1,233.6	-970.8	1.47	1.06	2.78
5,575.0	23.10	224.66	5,233.6	-1,218.6	-1,259.1	-990.7	1.12	1.10	-0.56
5,670.0	22.45	224.57	5,321.2	-1,244.7	-1,284.9	-1,010.8	0.69	-0.68	-0.09
5,765.0	22.59	225.41	5,408.9	-1,270.5	-1,310.6	-1,030.8	0.37	0.15	0.88
5,860.0	23.15	224.97	5,496.5	-1,296.5	-1,336.8	-1,051.3	0.62	0.59	-0.46
5,954.0	22.99	225.38	5,583.0	-1,322.4	-1,362.9	-1,071.7	0.24	-0.17	0.44
6,049.0	22.47	225.19	5,670.6	-1,348.3	-1,389.0	-1,092.1	0.55	-0.55	-0.20
6,144.0	22.33	225.33	5,758.4	-1,373.8	-1,414.7	-1,112.3	0.16	-0.15	0.15
6,238.0	21.94	225.95	5,845.5	-1,398.5	-1,440.1	-1,132.1	0.48	-0.41	0.66
6,333.0	22.84	223.36	5,933.3	-1,424.3	-1,465.5	-1,151.9	1.41	0.95	-2.73
6,428.0	23.25	223.57	6,020.7	-1,451.3	-1,491.1	-1,171.6	0.44	0.43	0.22
6,523.0	22.89	222.76	6,108.1	-1,478.4	-1,516.5	-1,191.1	0.51	-0.38	-0.85
6,617.0	23.03	222.77	6,194.7	-1,505.3	-1,541.4	-1,210.2	0.15	0.15	0.01
6,712.0	22.99	222.38	6,282.1	-1,532.7	-1,566.5	-1,229.3	0.17	-0.04	-0.41
6,807.0	23.15	224.97	6,369.5	-1,559.6	-1,592.2	-1,249.1	1.08	0.17	2.73
6,901.0	20.51	214.82	6,456.8	-1,586.2	-1,614.7	-1,265.9	4.89	-2.81	-10.80
6,996.0	17.44	194.63	6,546.7	-1,613.7	-1,627.8	-1,273.2	7.58	-3.23	-21.25
7,091.0	17.36	175.87	6,637.5	-1,641.6	-1,630.4	-1,270.2	5.88	-0.08	-19.75
7,185.0	19.92	158.55	6,726.6	-1,670.5	-1,623.5	-1,257.7	6.46	2.72	-18.43
7,280.0	23.49	140.22	6,815.0	-1,700.2	-1,605.5	-1,234.1	8.02	3.76	-19.29
7,374.0	28.02	123.87	6,899.7	-1,726.9	-1,575.1	-1,199.0	8.92	4.82	-17.39
7,469.0	34.37	112.81	6,981.0	-1,749.8	-1,531.8	-1,151.9	8.98	6.68	-11.64
7,563.0	42.51	109.64	7,054.6	-1,770.8	-1,477.3	-1,094.4	8.91	8.66	-3.37
7,658.0	49.55	107.62	7,120.5	-1,792.6	-1,412.5	-1,026.6	7.57	7.41	-2.13
7,753.0	57.03	103.70	7,177.2	-1,813.0	-1,339.3	-950.7	8.54	7.87	-4.13
7,847.0	64.48	98.65	7,223.2	-1,828.7	-1,258.9	-868.8	9.20	7.93	-5.37
7,942.0	70.87	95.12	7,259.2	-1,839.2	-1,171.7	-781.2	7.55	6.73	-3.72
8,037.0	79.44	93.48	7,283.6	-1,846.0	-1,080.2	-690.2	9.17	9.02	-1.73
8,131.0	84.45	94.25	7,296.7	-1,852.3	-987.4	-598.0	5.39	5.33	0.82
8,141.6	84.43	94.12	7,297.7	-1,853.1	-976.8	-587.6	1.21	-0.23	-1.19
LP (985.4' FSL & 150' FWL)									
8,226.0	84.23	93.12	7,306.1	-1,858.4	-893.0	-504.4	1.21	-0.23	-1.19
8,321.0	84.36	92.64	7,315.5	-1,863.1	-798.6	-410.9	0.52	0.14	-0.51
8,415.0	84.52	92.85	7,324.6	-1,867.6	-705.2	-318.4	0.28	0.17	0.22
8,510.0	85.41	92.79	7,333.0	-1,872.3	-610.6	-224.9	0.94	0.94	-0.06
8,605.0	85.19	92.03	7,340.8	-1,876.3	-516.0	-131.4	0.83	-0.23	-0.80
8,700.0	84.81	92.76	7,349.0	-1,880.2	-421.5	-38.0	0.86	-0.40	0.77
8,794.0	85.34	92.60	7,357.1	-1,884.6	-327.9	54.6	0.59	0.56	-0.17
8,889.0	85.57	92.79	7,364.6	-1,889.0	-233.3	148.2	0.31	0.24	0.20
8,984.0	85.45	92.56	7,372.1	-1,893.5	-138.7	241.8	0.27	-0.13	-0.24

Company:	PDC Energy Inc. DJ Basin	Local Co-ordinate Reference:	Well Bost Farm 16C-8-L
Project:	SEC.7-T5N-R66W	TVD Reference:	WELL @ 4902 ft (Patterson 272 - RKB 28')
Site:	Bost Farms 5-7 Pad SEC.7-T5N-R66W	MD Reference:	WELL @ 4902 ft (Patterson 272 - RKB 28')
Well:	Bost Farm 16C-8-L	North Reference:	True
Wellbore:	Bost Farms 16C-8-L Wellbore #1	Survey Calculation Method:	Minimum Curvature
Design:	16C-8-L_As Drilled	Database:	US_EDM

Survey

Measured Depth (ft)	Inclination (°)	Azimuth (°)	Vertical Depth (ft)	+N/-S (ft)	+E/-W (ft)	Vertical Section (ft)	Dogleg Rate (°/100usft)	Build Rate (°/100usft)	Turn Rate (°/100usft)
9,078.0	85.02	93.12	7,379.9	-1,898.1	-45.2	334.4	0.75	-0.46	0.60
9,173.0	85.21	91.94	7,388.0	-1,902.3	49.4	427.9	1.25	0.20	-1.24
9,362.0	88.21	90.29	7,398.8	-1,905.9	238.0	613.4	1.81	1.59	-0.87
9,457.0	90.07	88.77	7,400.2	-1,905.2	333.0	706.3	2.53	1.96	-1.60
9,552.0	91.58	89.64	7,398.9	-1,903.9	428.0	799.1	1.83	1.59	0.92
9,646.0	92.09	89.05	7,395.9	-1,902.8	521.9	891.0	0.83	0.54	-0.63
9,741.0	92.06	88.82	7,392.4	-1,901.0	616.8	983.6	0.24	-0.03	-0.24
9,835.0	91.92	89.52	7,389.2	-1,899.7	710.8	1,075.4	0.76	-0.15	0.74
9,929.0	91.85	89.33	7,386.1	-1,898.7	804.7	1,167.3	0.22	-0.07	-0.20
10,023.0	92.38	88.87	7,382.6	-1,897.2	898.6	1,259.0	0.75	0.56	-0.49
10,118.0	91.85	88.93	7,379.1	-1,895.4	993.5	1,351.7	0.56	-0.56	0.06
10,306.0	91.25	88.77	7,374.0	-1,891.6	1,181.4	1,535.0	0.33	-0.32	-0.09
10,400.0	91.28	88.37	7,371.9	-1,889.3	1,275.4	1,626.6	0.43	0.03	-0.43
10,493.0	89.50	88.90	7,371.3	-1,887.1	1,368.4	1,717.3	2.00	-1.91	0.57
10,588.0	89.73	89.06	7,371.9	-1,885.4	1,463.3	1,810.0	0.29	0.24	0.17
10,682.0	89.58	88.93	7,372.5	-1,883.7	1,557.3	1,901.8	0.21	-0.16	-0.14
10,776.0	89.78	89.47	7,373.0	-1,882.4	1,651.3	1,993.6	0.61	0.21	0.57
10,871.0	89.73	89.17	7,373.4	-1,881.3	1,746.3	2,086.5	0.32	-0.05	-0.32
10,966.0	90.52	88.62	7,373.2	-1,879.5	1,841.3	2,179.2	1.01	0.83	-0.58
11,060.0	90.55	89.17	7,372.4	-1,877.7	1,935.3	2,270.9	0.59	0.03	0.59
11,155.0	90.29	89.10	7,371.7	-1,876.2	2,030.2	2,363.7	0.28	-0.27	-0.07
11,249.0	90.43	88.60	7,371.1	-1,874.3	2,124.2	2,455.4	0.55	0.15	-0.53
11,344.0	90.54	89.17	7,370.3	-1,872.5	2,219.2	2,548.1	0.61	0.12	0.60
11,438.0	90.33	89.00	7,369.6	-1,871.0	2,313.2	2,639.9	0.29	-0.22	-0.18
11,532.0	90.41	88.90	7,368.9	-1,869.3	2,407.2	2,731.7	0.14	0.09	-0.11
11,627.0	90.40	88.95	7,368.3	-1,867.5	2,502.2	2,824.4	0.05	-0.01	0.05
11,721.0	90.27	89.04	7,367.7	-1,865.8	2,596.1	2,916.2	0.17	-0.14	0.10
11,815.0	90.94	88.89	7,366.7	-1,864.1	2,690.1	3,007.9	0.73	0.71	-0.16
11,909.0	90.24	89.08	7,365.8	-1,862.5	2,784.1	3,099.7	0.77	-0.74	0.20
12,003.0	90.49	89.01	7,365.2	-1,860.9	2,878.1	3,191.4	0.28	0.27	-0.07
12,192.0	90.74	89.15	7,363.1	-1,857.9	3,067.0	3,376.0	0.15	0.13	0.07
12,286.0	89.94	89.09	7,362.6	-1,856.4	3,161.0	3,467.8	0.85	-0.85	-0.06
12,380.0	90.17	89.18	7,362.5	-1,855.0	3,255.0	3,559.6	0.26	0.24	0.10
12,472.0	90.81	88.66	7,361.7	-1,853.3	3,347.0	3,649.4	0.90	0.70	-0.57
12,567.0	90.45	88.39	7,360.7	-1,850.8	3,442.0	3,742.0	0.47	-0.38	-0.28
12,661.0	90.45	88.66	7,359.9	-1,848.4	3,535.9	3,833.6	0.29	0.00	0.29
12,756.0	90.22	89.05	7,359.4	-1,846.5	3,630.9	3,926.3	0.48	-0.24	0.41
12,850.0	89.98	88.87	7,359.2	-1,844.8	3,724.9	4,018.0	0.32	-0.26	-0.19
12,944.0	89.85	89.06	7,359.3	-1,843.1	3,818.9	4,109.8	0.24	-0.14	0.20
13,038.0	89.80	89.74	7,359.6	-1,842.1	3,912.9	4,201.7	0.73	-0.05	0.72
13,132.0	89.95	89.75	7,359.8	-1,841.7	4,006.9	4,293.7	0.16	0.16	0.01
13,227.0	89.53	90.14	7,360.3	-1,841.6	4,101.9	4,386.8	0.60	-0.44	0.41
13,321.0	89.69	90.17	7,360.9	-1,841.9	4,195.9	4,478.9	0.17	0.17	0.03
13,416.0	90.00	89.80	7,361.2	-1,841.8	4,290.9	4,572.0	0.51	0.33	-0.39

Company:	PDC Energy Inc. DJ Basin	Local Co-ordinate Reference:	Well Bost Farm 16C-8-L
Project:	SEC.7-T5N-R66W	TVD Reference:	WELL @ 4902 ft (Patterson 272 - RKB 28')
Site:	Bost Farms 5-7 Pad SEC.7-T5N-R66W	MD Reference:	WELL @ 4902 ft (Patterson 272 - RKB 28')
Well:	Bost Farm 16C-8-L	North Reference:	True
Wellbore:	Bost Farms 16C-8-L Wellbore #1	Survey Calculation Method:	Minimum Curvature
Design:	16C-8-L_As Drilled	Database:	US_EDM

Survey

Measured Depth (ft)	Inclination (°)	Azimuth (°)	Vertical Depth (ft)	+N/-S (ft)	+E/-W (ft)	Vertical Section (ft)	Dogleg Rate (°/100usft)	Build Rate (°/100usft)	Turn Rate (°/100usft)
13,510.0	89.71	90.11	7,361.4	-1,841.8	4,384.9	4,664.1	0.45	-0.31	0.33
13,604.0	89.90	89.77	7,361.7	-1,841.7	4,478.9	4,756.2	0.41	0.20	-0.36
13,698.0	89.95	89.94	7,361.8	-1,841.4	4,572.9	4,848.3	0.19	0.05	0.18
13,793.0	89.87	89.67	7,362.0	-1,841.1	4,667.9	4,941.3	0.30	-0.08	-0.28
13,887.0	89.63	89.34	7,362.4	-1,840.3	4,761.9	5,033.3	0.43	-0.26	-0.35
13,981.0	90.75	90.33	7,362.1	-1,840.0	4,855.9	5,125.3	1.59	1.19	1.05
14,076.0	90.90	89.94	7,360.7	-1,840.2	4,950.8	5,218.4	0.44	0.16	-0.41
14,170.0	90.55	90.11	7,359.5	-1,840.3	5,044.8	5,310.5	0.41	-0.37	0.18
14,265.0	91.14	89.44	7,358.1	-1,839.9	5,139.8	5,403.5	0.94	0.62	-0.71
14,360.0	91.34	89.62	7,356.1	-1,839.1	5,234.8	5,496.5	0.28	0.21	0.19
14,454.0	90.59	89.62	7,354.5	-1,838.5	5,328.8	5,588.4	0.80	-0.80	0.00
14,548.0	89.95	88.46	7,354.0	-1,836.9	5,422.8	5,680.2	1.41	-0.68	-1.23
14,643.0	90.17	89.44	7,353.9	-1,835.2	5,517.7	5,772.9	1.06	0.23	1.03
14,737.0	90.20	89.60	7,353.6	-1,834.4	5,611.7	5,864.9	0.17	0.03	0.17
14,831.0	90.17	89.40	7,353.3	-1,833.6	5,705.7	5,956.8	0.22	-0.03	-0.21
14,925.0	89.02	89.79	7,354.0	-1,832.9	5,799.7	6,048.8	1.29	-1.22	0.41
15,019.0	89.41	90.02	7,355.3	-1,832.8	5,893.7	6,140.9	0.48	0.41	0.24
15,113.0	89.42	89.59	7,356.3	-1,832.4	5,987.7	6,232.9	0.46	0.01	-0.46
15,301.0	89.79	90.19	7,357.5	-1,832.1	6,175.7	6,417.1	0.37	0.20	0.32
15,395.0	89.33	89.86	7,358.3	-1,832.1	6,269.7	6,509.2	0.60	-0.49	-0.35
15,489.0	89.80	89.90	7,359.0	-1,831.9	6,363.7	6,601.2	0.50	0.50	0.04
15,584.0	89.76	89.82	7,359.3	-1,831.7	6,458.7	6,694.3	0.09	-0.04	-0.08
15,678.0	90.03	89.77	7,359.5	-1,831.4	6,552.7	6,786.3	0.29	0.29	-0.05
15,772.0	89.69	89.78	7,359.7	-1,831.0	6,646.7	6,878.4	0.36	-0.36	0.01
15,866.0	90.03	89.76	7,360.0	-1,830.6	6,740.7	6,970.4	0.36	0.36	-0.02
15,960.0	89.93	89.98	7,360.0	-1,830.4	6,834.7	7,062.5	0.26	-0.11	0.23
16,054.0	90.37	89.95	7,359.8	-1,830.3	6,928.7	7,154.6	0.47	0.47	-0.03
16,148.0	90.17	89.96	7,359.3	-1,830.3	7,022.7	7,246.7	0.21	-0.21	0.01
16,242.0	91.03	89.68	7,358.3	-1,830.0	7,116.7	7,338.7	0.96	0.91	-0.30
16,336.0	90.37	89.21	7,357.2	-1,829.1	7,210.7	7,430.6	0.86	-0.70	-0.50
16,430.0	90.44	89.43	7,356.5	-1,827.9	7,304.7	7,522.5	0.25	0.07	0.23
16,524.0	91.24	89.57	7,355.1	-1,827.1	7,398.7	7,614.4	0.86	0.85	0.15
16,618.0	89.91	89.64	7,354.2	-1,826.5	7,492.6	7,706.4	1.42	-1.41	0.07
16,712.0	90.63	89.69	7,353.8	-1,825.9	7,586.6	7,798.4	0.77	0.77	0.05
16,806.0	89.86	90.19	7,353.4	-1,825.8	7,680.6	7,890.5	0.98	-0.82	0.53
16,901.0	89.93	90.16	7,353.5	-1,826.1	7,775.6	7,983.6	0.08	0.07	-0.03
16,995.0	90.06	90.18	7,353.5	-1,826.4	7,869.6	8,075.8	0.14	0.14	0.02
17,089.0	90.19	89.25	7,353.3	-1,825.9	7,963.6	8,167.8	1.00	0.14	-0.99
17,183.0	90.37	89.61	7,352.9	-1,825.0	8,057.6	8,259.7	0.43	0.19	0.38
17,277.0	89.65	89.29	7,352.9	-1,824.1	8,151.6	8,351.7	0.84	-0.77	-0.34
17,372.0	90.02	90.32	7,353.1	-1,823.8	8,246.6	8,444.7	1.15	0.39	1.08
17,560.0	89.76	90.68	7,353.5	-1,825.4	8,434.6	8,629.2	0.24	-0.14	0.19
17,654.0	90.03	90.44	7,353.7	-1,826.3	8,528.6	8,721.5	0.38	0.29	-0.26

Company:	PDC Energy Inc. DJ Basin	Local Co-ordinate Reference:	Well Bost Farm 16C-8-L
Project:	SEC.7-T5N-R66W	TVD Reference:	WELL @ 4902 ft (Patterson 272 - RKB 28')
Site:	Bost Farms 5-7 Pad SEC.7-T5N-R66W	MD Reference:	WELL @ 4902 ft (Patterson 272 - RKB 28')
Well:	Bost Farm 16C-8-L	North Reference:	True
Wellbore:	Bost Farms 16C-8-L Wellbore #1	Survey Calculation Method:	Minimum Curvature
Design:	16C-8-L_As Drilled	Database:	US_EDM

Survey

Measured Depth (ft)	Inclination (°)	Azimuth (°)	Vertical Depth (ft)	+N/-S (ft)	+E/-W (ft)	Vertical Section (ft)	Dogleg Rate (°/100usft)	Build Rate (°/100usft)	Turn Rate (°/100usft)
17,749.0	90.17	89.73	7,353.5	-1,826.5	8,623.6	8,814.6	0.76	0.15	-0.75
17,843.0	89.80	90.40	7,353.5	-1,826.6	8,717.6	8,906.8	0.81	-0.39	0.71
17,937.0	89.78	90.37	7,353.9	-1,827.2	8,811.6	8,999.0	0.04	-0.02	-0.03
18,084.0	89.85	90.87	7,354.3	-1,828.8	8,958.6	9,143.4	0.34	0.05	0.34
18,111.0	89.85	90.87	7,354.4	-1,829.2	8,985.6	9,169.9	0.00	0.00	0.00
BHL (1003' FSL & 465' FEL)									

Survey Annotations

Measured Depth (ft)	Vertical Depth (ft)	Local Coordinates		Comment
		+N/-S (ft)	+E/-W (ft)	
8,141.6	7,297.7	-1,853.1	-976.8	LP (985.4' FSL & 150' FWL)
18,111.0	7,354.4	-1,829.2	8,985.6	BHL (1003' FSL & 465' FEL)