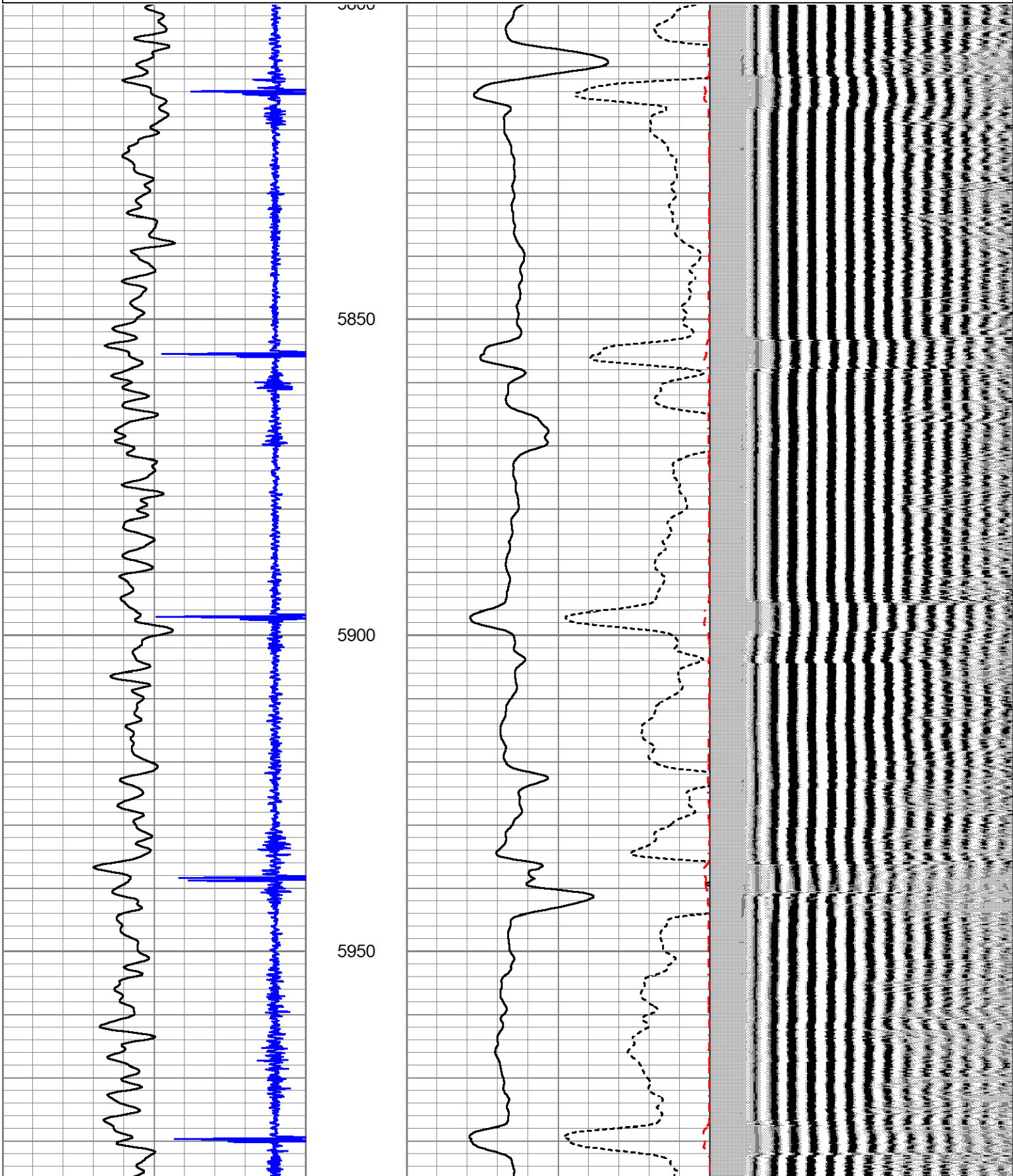


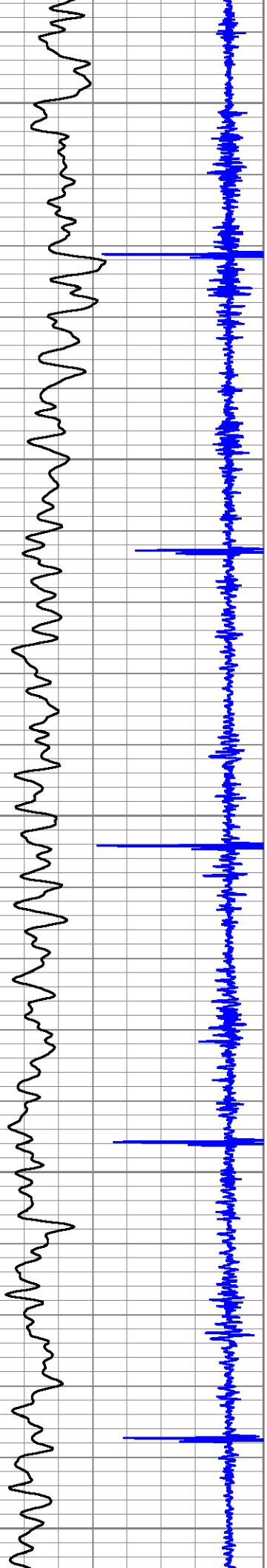
Database File 4-29-22.db
 Dataset Pathname pass8
 Presentation Format cbl_dr
 Dataset Creation Fri Apr 29 10:58:06 2022
 Charted by Depth in Feet scaled 1:240

9	Collar Locator	-1
0	Gamma Ray (GAPI)	250

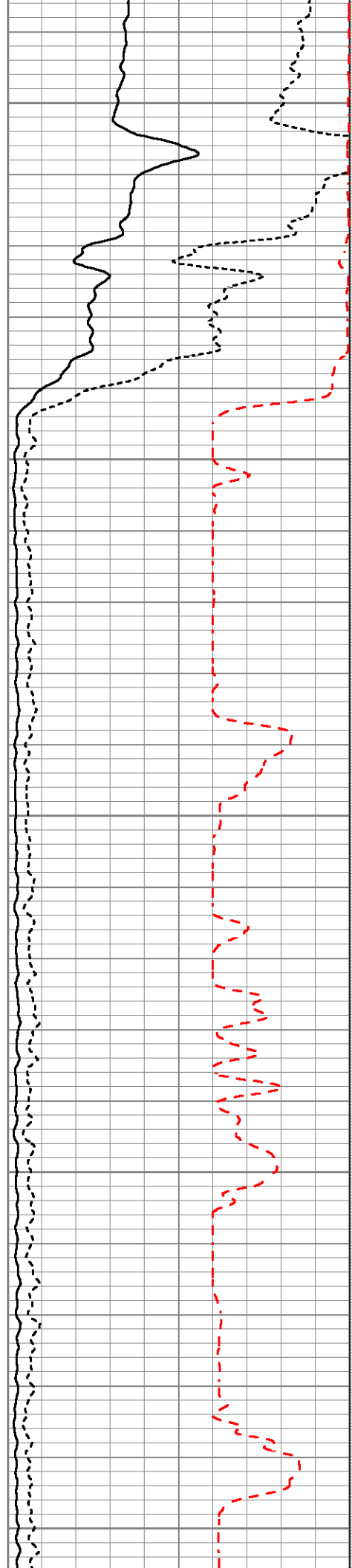
0	Amplified Amplitude (mV)	40
0	Amplitude (mV)	100
1200	TT3FT (usec)	200

200 VDL (usec) 1200





6000
6050
6100
6150
6200



Gamma Ray

Collar Locator

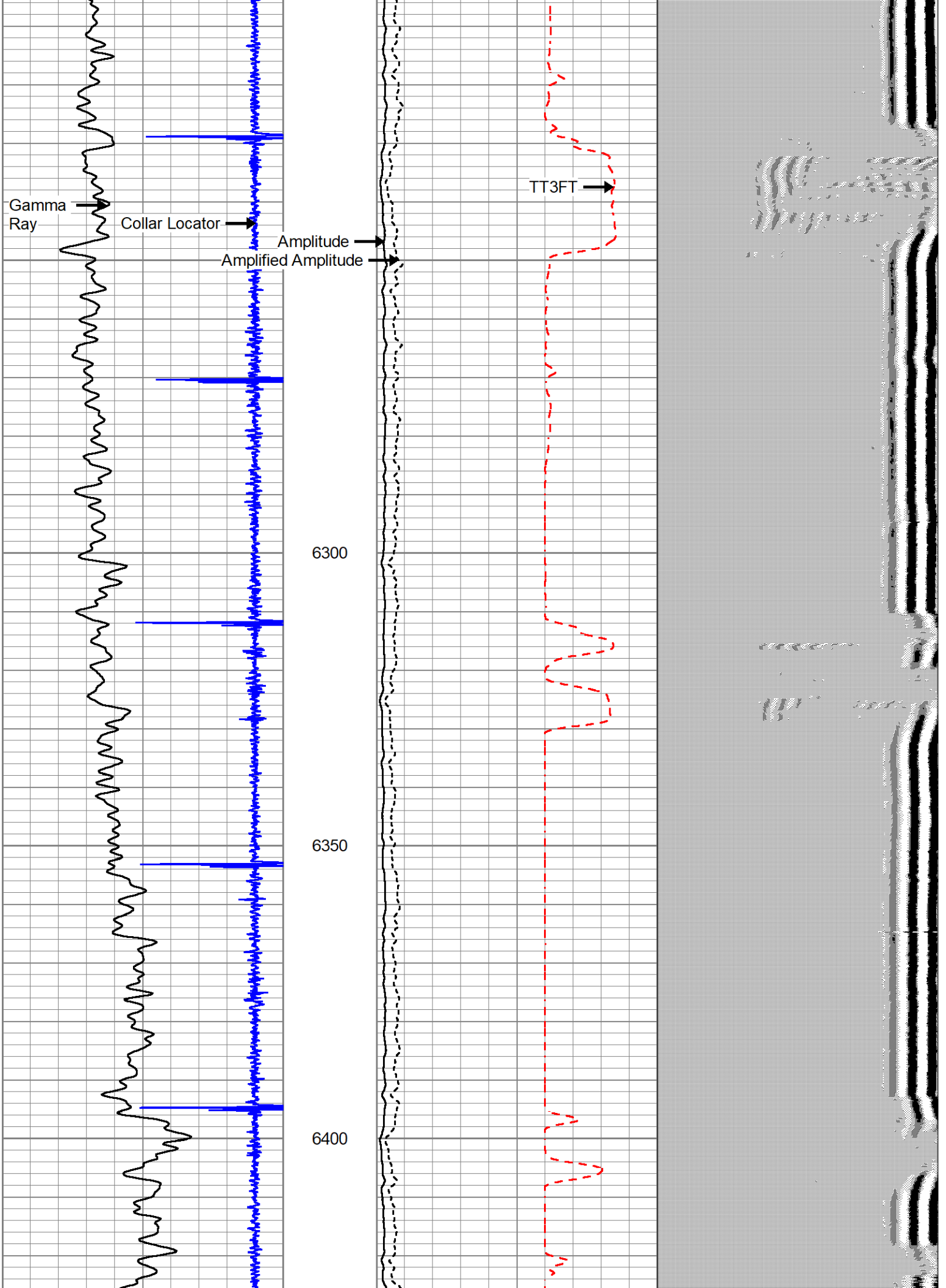
Amplitude
Amplified Amplitude

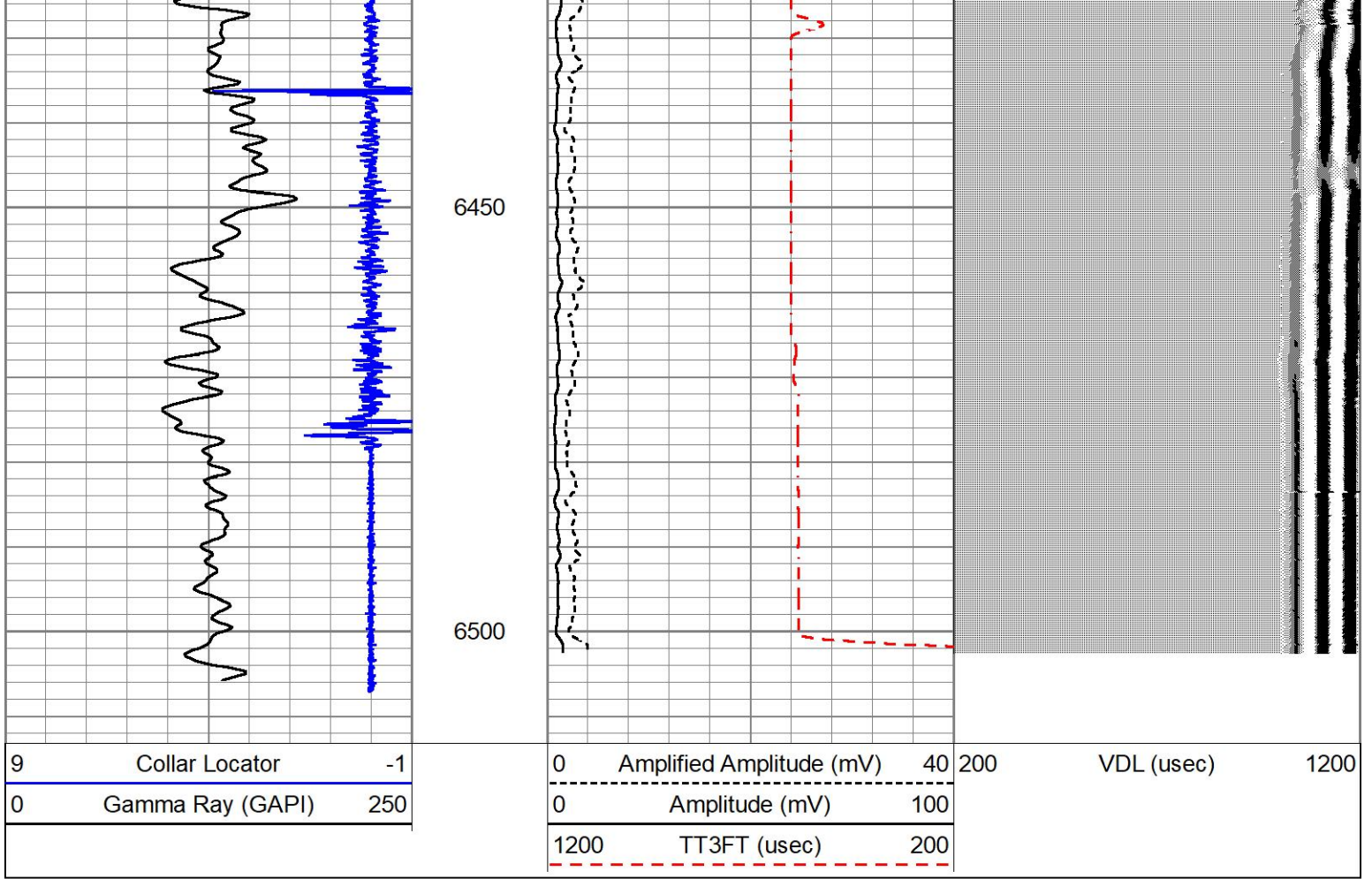
TT3FT

6300

6350

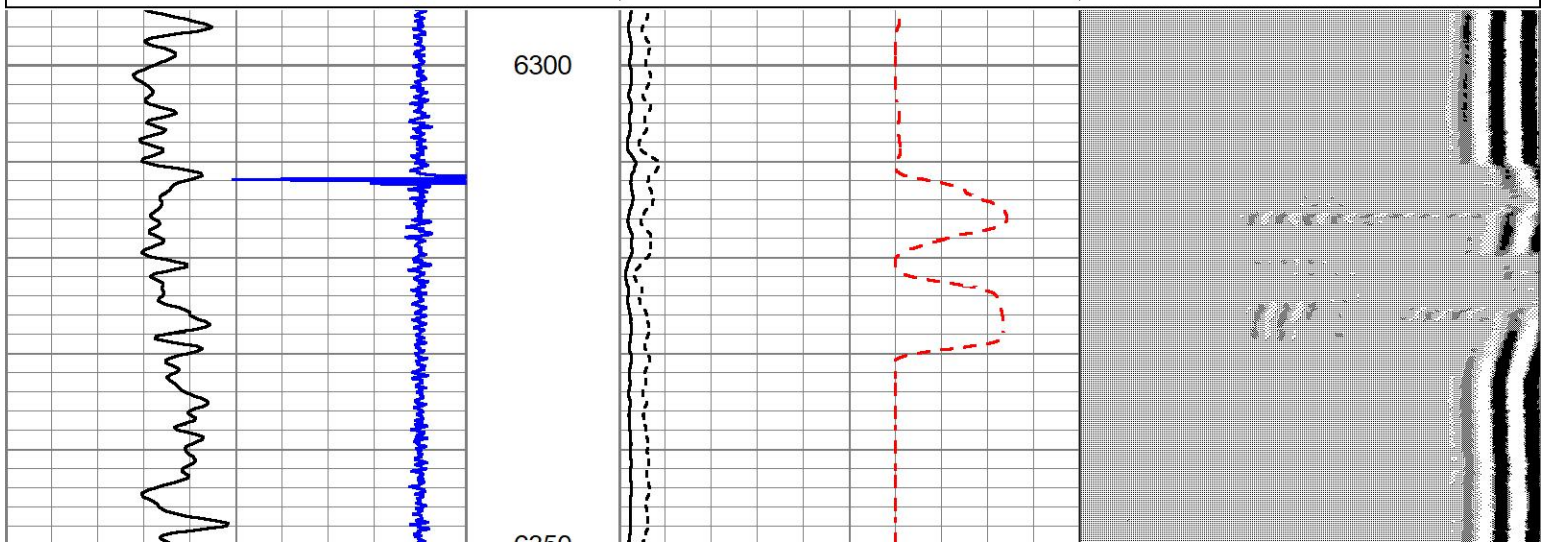
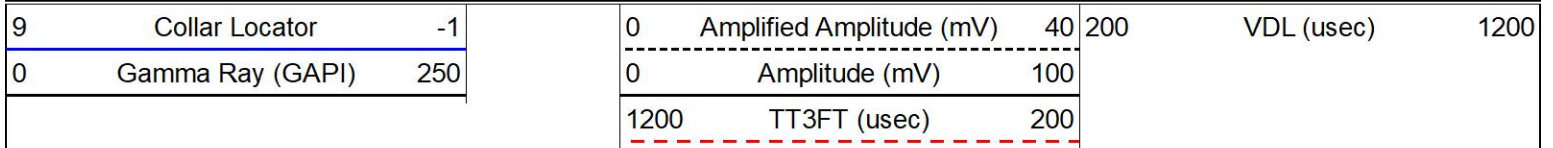
6400

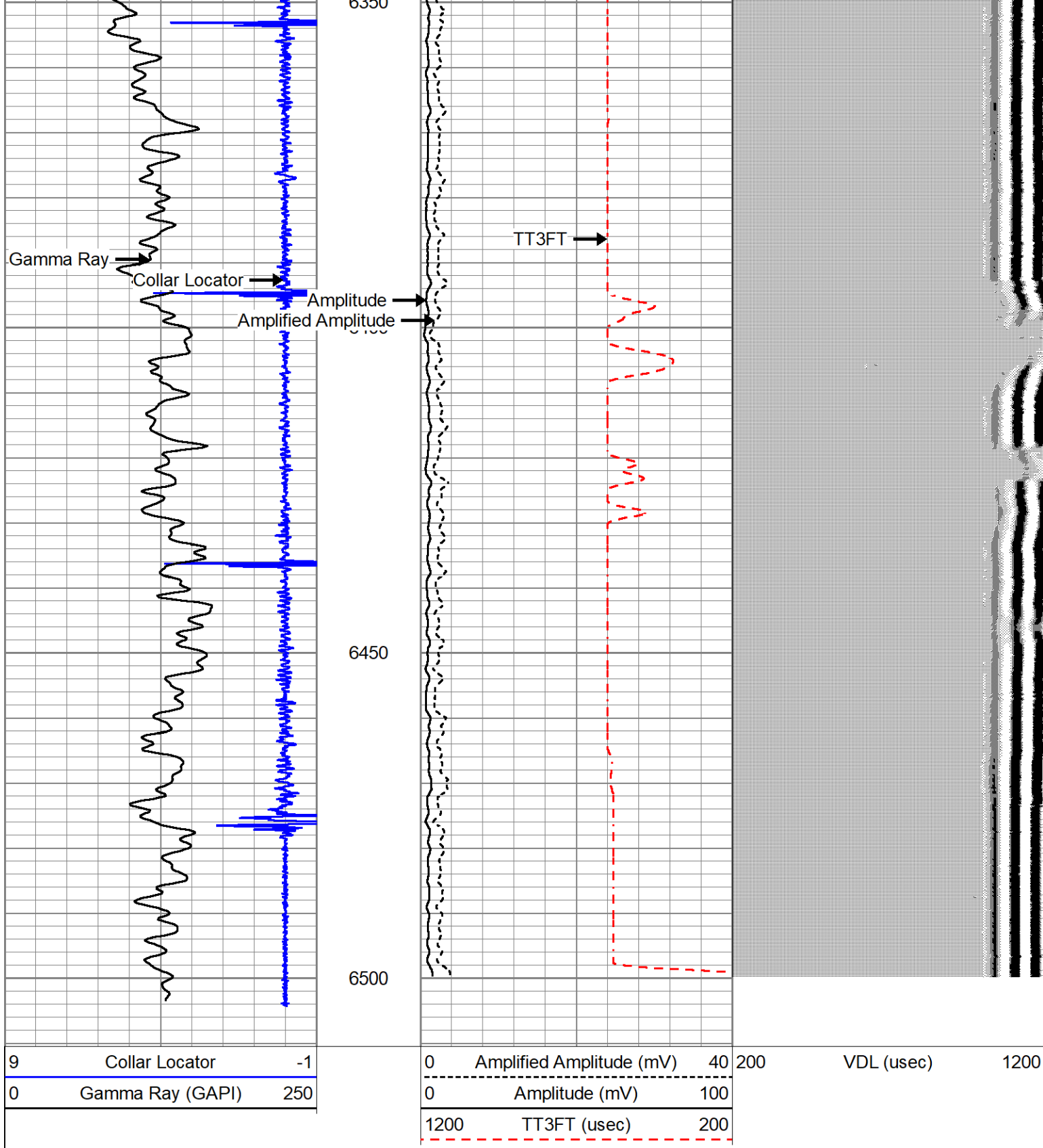




REPEAT PASS

Database File 4-29-22.db
 Dataset Pathname pass6
 Presentation Format cbl_dr
 Dataset Creation Fri Apr 29 10:53:55 2022
 Charted by Depth in Feet scaled 1:240





Calibration Report

Database File 4-29-22.db
 Dataset Pathname pass8
 Dataset Creation Fri Apr 29 10:58:06 2022

Gamma Ray Calibration Report

Type / Serial: Probe275dig / pr051113

SHOP CALIBRATION

Mon Oct 22 13:45:45 2018

Background	Counts/Sec.	0.0	Gain	Offset	Jig	Units
Calibrator		1.0	1.0000			cps
						cps
						GAPI/cps

PRIMARY VERIFICATION

Background	0.0					cps
Calibrator	0.0					cps
Difference				0.0		GAPI

BEFORE SURVEY VERIFICATION

Background	0.0					cps
Calibrator	0.0					cps
Difference				0.0		GAPI

AFTER SURVEY VERIFICATION

Background	0.0					cps
Calibrator	0.0					cps
Difference				0.0		GAPI

Segmented Cement Bond Log Calibration Report

Serial Number: 275
 Tool Model: Probe
 Calibration Casing Diameter: 3.500 in
 Calibration Depth: 3654.655 ft

Master Calibration, performed Fri Apr 29 10:37:18 2022:

	Raw (v)		Calibrated (mv)		Results	
	Zero	Cal	Zero	Cal	Gain	Offset
3'	-0.024	0.693	0.450	94.517	131.047	3.657
CAL						
5'	0.016	0.396	0.450	94.517	247.232	-3.392
SUM						
S1						
S2						
S3						
S4						
S5						
S6						
S7						
S8						

Internal Reference Calibration, performed (Not Performed):


	Raw (v)		Calibrated (v)		Results	
	Zero	Cal	Zero	Cal	Gain	Offset
CAL						

Air Zero Calibration, performed Wed May 16 07:39:51 2018:

	Raw (v)		Calibrated (v)		Results	
	Zero		Zero			Offset
3'	0.000		0.000			0.000
5'	0.000		0.000			0.000

SUM
S1
S2
S3
S4
S5
S6
S7
S8

Sensor	Offset (ft)	Schematic	Description	Length (ft)	O.D. (in)	Weight (lb)	
			CS6CENT-CSSROLLER	2.20	1.69	4.41	
			CBL-Probe (275) Probe 1.69 Dual Receiver Bond	9.67	1.69	60.00	
WVF3FT	11.64						
WVF5FT	10.64						
WVFSYNC HEADVOLT	7.45 7.45						
CCL	6.12						
GR	4.74		GR-Probe275dig (pr051113) Probe Digital Gamma CCL	5.25	1.69	57.00	

			CS6CENT-CSSROLLER	2.20	1.69	4.41
Dataset:			4-29-22.db: field/well/run1/pass8			
Total length:			19.32 ft			
Total weight:			125.82 lb			
O.D.:			1.69 in			

Log Variables

DatabaseC:\ProgramData\Warrior\Data\4-29-22.db
Dataset field/well/run1/pass8/_vars_

Top - Bottom

BOREID in 7.875	BOTTEMP degF 100	CASEOD in 3.5	CASETHCK in 0	CASEWGHT lb/ft 7.7	MAXAMPL mV 94.5	MINAMPL mV 1	MINATTN db/ft 0.8
PERFS No	PPT usec 0	SRFTEMP degF 0	TDEPTH ft 0				

Variable Description

BOREID : Borehole I.D.

BOTTEMP : Bottom Hole Temperature

CASEOD : Casing O.D.

CASETHCK : Casing Thickness

CASEWGHT : Casing Weight

MAXAMPL : Maximum Amplitude

MINAMPL : Minimum Amplitude

MINATTN : Minimum Attenuation

PERFS : Perforation Flag

PPT : Predicted Pipe Time

SRFTEMP : Surface Temperature

TDEPTH : Total Depth