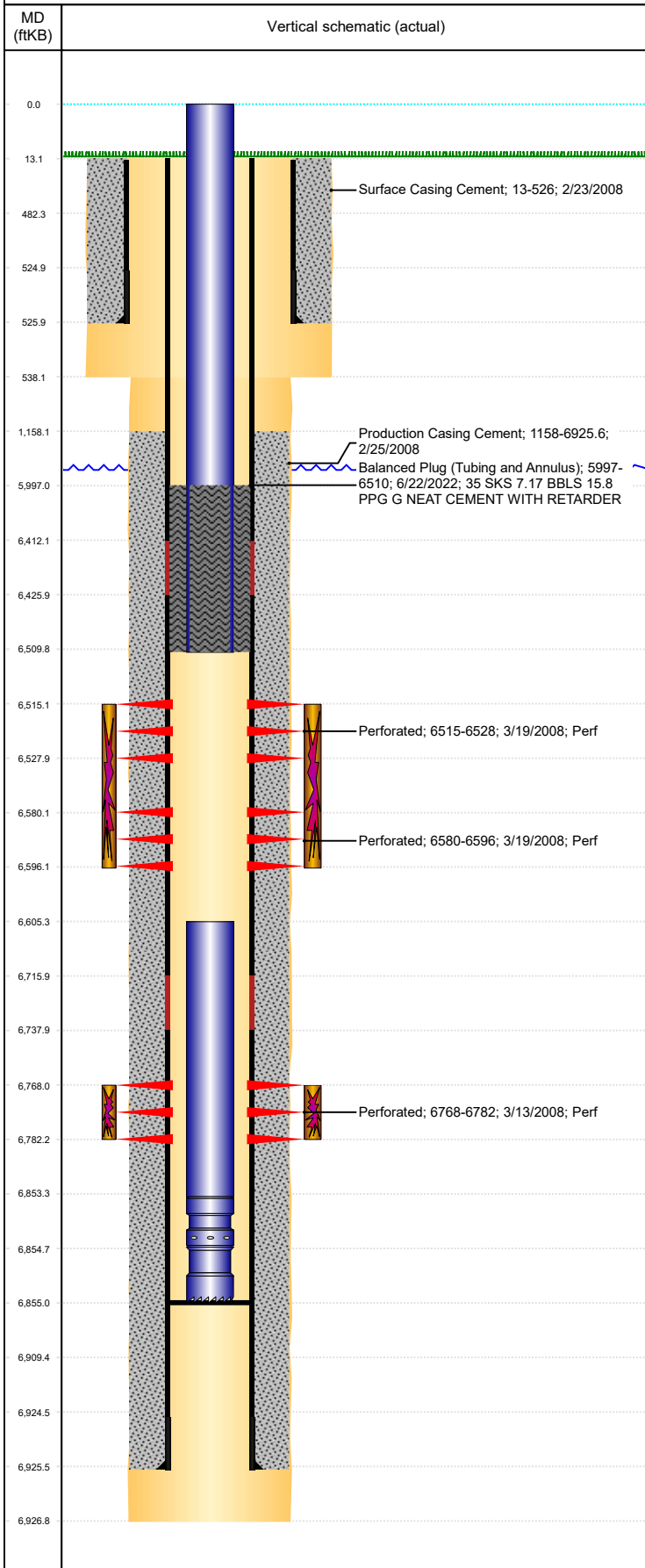




# P&A Wellbore For State

Well Name: MILLAGE C14-33

Land, Original Hole, 7/13/2022 10:41:35 AM



Well Header									
Surface UWI 0512325516			Business Unit Rockies			Gov Auth Dist		Prod Tree Loc Land	
Orig. KB to Gnd (ft) 12.50		Original Spud Date 2/22/2008		Abandon Date		Well Sub-Status TA			High... N
Comment 318Ae LOCATION. PHOENIX SURVEYS - PARNTER NEEDS LOG COPIES. SEE SPECIAL INSTRUCTIONS BELOW.									
Surface Location (Congressional)									
Qtr 3 NE	Qtr 4 SE	Section 15	Twnshp 4	Twnsh... N	Range 64	Rng E/... W	Latitude (°) 40.30884146 6	Longitude (°) -104.52797322	
Wellbore Sections									
Section Des			Hole Size (in)			Act Top (ftKB)		Act Btm (ftKB)	
SURFACE			12 1/4			13.0		538.0	
PRODUCTION			7 7/8			538.0		6,927.0	
Casing Strings									
Csg Des			Run Date		OD (in)	Wt/Len (lb/ft)	Grade	Top Depth (MD) (ftKB)	Set Depth (MD) (ftKB)
Surface			2/23/2008		8 5/8	24.00	J-55	13.2	526
Production Casing			2/24/2008		4 1/2	11.60	M-80	13	6925.6
Cement									
Des					Start Date		Top (ftKB)		Btm (ftKB)
Surface Casing Cement					2/23/2008		13.0		526.0
Production Casing Cement					2/25/2008		1,158.0		6,925.6
Balanced Plug (Tubing and Annulus)					6/22/2022		5,997.0		6,510.0
Zone Statuses									
Zone Name		Status Date	Status	Fluid Type	Job				Prod Method
NIOBRARA		3/22/2008	PR	Gas	DRILLING/COMPLETION - ORIGINAL, 2/21/2008...				
NIOBRARA		6/22/2022	Closed	Gas	CIBP, 6/21/2022 00:00				
CODELL		3/22/2008	PR	Gas	DRILLING/COMPLETION - ORIGINAL, 2/21/2008...				
CODELL		6/22/2022	Closed	Gas	CIBP, 6/21/2022 00:00				
Perforation Data									
Linked Zone			Explosive Type	Entered Shot Total	Top (ftKB)		Btm (ftKB)		Date
NIOBRARA, Original Hole			A	52	6,515.0		6,528.0		3/19/2008
NIOBRARA, Original Hole			B	64	6,580.0		6,596.0		3/19/2008
CODELL, Original Hole				56	6,768.0		6,782.0		3/13/2008
Stimulation Intervals									
Zone				Start Date			Top (ftKB)		Btm (ftKB)
NIOBRARA, Original Hole				3/19/2008			6,515.0		6,596.0
CODELL, Original Hole				3/19/2008			6,768.0		6,782.0
Other In Hole									
Run Date		Des			Make		OD (in)	Top (ftKB)	Btm (ftKB)
Logs									
Date		Type					Depth Top (MD) (ftKB)		Btm (ftKB)
3/5/2008		CBL/CCL/GR					0		6,870.0
3/10/2008		PULSED NEUTRON					450		6,882.0
Plug Back Total Depths									
Date		Type			Com				PBTD (ftKB)
2/25/2008					CALCULATED PBTD				6,899
12/22/2008		PLUG REMNANTS							6,855