



Third Party Removal Date									
Sample taken? Location/Container									
PID Readings									
Photo Number(s)									
Other Facility Equipment									
Equipment type	Meter House, Flare								
Equipment Condition	good								
Age									
Soil impacts	None observed								
PID Readings	0.0								
Sample taken? Location/Container	Yes - see below								
Photo Number(s)	1 - 17								
Other observations regarding other facility or third party equipment: Sample taken below meter house and flare. (MH01@0.5' & Flare01@0.5')									
Summary									
Was impacted soil identified? No Yes - less than 10 cubic yards Yes - more than 10 cubic yards									
Total number of samples field screened: 17					Total number of samples collected: 17				
Highest PID Reading: 76.9					Total number of samples submitted to lab for analysis: 12				
If more than 10 cubic yards of impacted soil were observed:									
Vertical extent:					Estimated spill volume:				
Lateral extent:					Volume of soil removed: 0.5 truckloads removed				
Is additional investigation required? Monitoring wells to be installed									
Was groundwater encountered during the investigation? No Yes - not impacted or in contact with impacted soils Yes - groundwater impacted and/or in contact with impacted soils									
Measured depth to groundwater:					Was remedial groundwater removal conducted? Yes No				
Date Groundwater was encountered:					Commencement date of removal:				
Sheen on groundwater? Yes No					Volume of groundwater removed prior to sampling:				
Free product observed? Yes No					Volume of groundwater removed post sampling:				
Total number of samples collected:					Total Volume of groundwater removed:				
Total number of samples submitted to lab for analysis:									

Photographic Log

					
Equipment ID: AST 01	Equipment Type: Above Ground Storage Tank		Equipment ID: Flare 01	Equipment Type: Emission Control Device	
Material: Steel	Volume:	Contents: Crude Oil	Material: Steel	Volume:	Contents:
Notes/Conditions: AST01 @0.5' sample location. No HC odor or staining.			Notes/Conditions: Flare 01 @0.5' sample location. No HC odor or staining.		

Photographic Log



Equipment ID: Flare 02	Equipment Type: Emission Control Device	
Material: Steel	Volume:	Contents:
Notes/Conditions: Flare 02@0.5' sample location. No HC odor or staining.		

Equipment ID: MH01	Equipment Type: Meter House	
Material: Steel	Volume:	Contents:
Notes/Conditions: MH01@0.5' Sample location. No HC odor or staining.		

Photographic Log



Equipment ID: Sep 01-FL01-B	Equipment Type: Flowline	
Material: Steel	Volume:	Contents: Oil/Gas/Water
Notes/Conditions: Point B sample of flowline at separator. No hydrocarbon odor or staining.		

Equipment ID: Sep 01-DL	Equipment Type: Dump Line	
Material: Steel	Volume:	Contents:
Notes/Conditions: Dumpline sample location. No hydrocarbon odor or staining.		

Photographic Log


					
Material: Concrete	Volume:	Contents: Produced Water	Material: Concrete	Volume:	Contents: Produced Water
Notes/Conditions: SS01 @2.5' sample location.			Notes/Conditions: SS02 @2.5' sample Location.		

Photographic Log



Equipment ID: SS03		Equipment Type: Partially Buried Vault		Equipment ID: SS04		Equipment Type: Partially Buried Vault	
Material: Concrete		Volume:		Material: Concrete		Volume:	
Contents: Produced Water				Contents: Produced Water			
Notes/Conditions: SS03@2.5' sample location.				Notes/Conditions: SS04@2.5' sample Location.			

Photographic Log

											
Equipment ID: FS01		Equipment Type: Partially Buried Vault		Equipment ID:		Equipment Type:					
Material: Concrete		Volume:		Contents: Produced Water		Material:		Volume:		Contents:	
Notes/Conditions: FS01 @ sample location.						Notes/Conditions:					

Photographic Log


Equipment ID: SS05	Equipment Type: Partially Buried Vault	
Material: Concrete	Volume:	Contents:
Notes/Conditions: SS05@2.5' sample location. No hydrocarbon odor or staining.		

Equipment ID: FS01@7'	Equipment Type: Partially Buried Vault	
Material: Concrete	Volume:	Contents:
Notes/Conditions: FS01@7' sample location. HC staining with slight odor.		

Photographic Log



Equipment ID: SS06		Equipment Type: Partially Buried Vault	
Material: Concrete	Volume:	Contents:	
Notes/Conditions: SS06@6' sample location.			

Equipment ID: SS07		Equipment Type: Partially Buried Vault	
Material: Concrete	Volume:	Contents:	
Notes/Conditions: SS07@6' sample Location.			

Photographic Log



Equipment ID: SS08		Equipment Type: Partially Buried Vault		Equipment ID: SS09		Equipment Type: Partially Buried Vault	
Material: Concrete		Volume:		Material: Concrete		Volume:	
Contents:				Contents:			
Notes/Conditions: SS08@6' sample location.				Notes/Conditions: SS09@6' sample location.			

TABLE 1
SOIL SAMPLE LOCATIONS
NOBLE ENERGY, INC. - REISTAD 1 TANK BATTERY

Soil Sample ID	Date	PID Reading (ppm)	Visual	Olfactory	Sample Type (Grab/Lab)	Latitude	Longitude	PDOP
AST01@0.5'	07/08/21	0.1	No Staining	No Odor	Lab	40.33646904	-104.5653442	1.2
FLARE 01@0.5'	07/08/21	0.0	No Staining	No Odor	Grab	40.33619049	-104.5652897	1.1
FLARE 02@0.5'	07/08/21	0.0	No Staining	No Odor	Grab	40.33620150	-104.5654223	1.0
MH01@0.5'	07/08/21	0.0	No Staining	No Odor	Grab	40.33624897	-104.5653227	1.0
Sep01-FL01-B@3'	07/08/21	0.4	No Staining	No Odor	Lab	40.33619563	-104.5653372	1.0
Sep 01-DL01@3'	07/08/21	0.5	No Staining	No Odor	Lab	40.33625016	-104.5653506	1.1
SS01@2.5'	07/08/21	1.2	No Staining	No Odor	Lab	40.33645297	-104.5653577	0.9
SS02@2.5'	07/08/21	76.9	HC Staining	HC Odor	Grab	40.33643717	-104.5653244	0.9
SS03@2.5	07/08/21	0.7	No Staining	No Odor	Lab	40.33640943	-104.5653532	0.9
SS04@2.5	07/08/21	0.8	No Staining	No Odor	Lab	40.33643703	-104.5653830	0.9
FS01@6'	07/08/21	17.3	HC Staining	Slight HC Odor	Grab	40.33643679	-104.5653535	0.9
SS05@2.5	07/08/21	0.8	No Staining	No Odor	Lab	40.33644123	-104.5653114	0.9
FS01@7'	07/08/21	5.9	HC Staining	Slight HC Odor	Lab	40.33643601	-104.5653508	1.1
SS06@6'	07/08/21	0.1	No Staining	No Odor	Lab	40.33645757	-104.5653567	1.0
SS07@6'	07/08/21	10.4	HC Staining	Slight HC Odor	Lab	40.33643010	-104.5653089	0.9
SS08@6'	07/08/21	0.6	No Staining	No Odor	Lab	40.33641047	-104.5653507	0.9
SS09@6'	07/08/21	0.6	No Staining	No Odor	Lab	40.33642805	-104.5653886	1.1
BG01@0.5'	03/01/22	0.0	No Staining	No Odor	Lab	40.33640159	-104.5654784	1.1
BG01@2-3'	03/01/22	0.0	No Staining	No Odor	Lab	40.33640159	-104.5654784	1.1
BG01@6'	03/01/22	0.0	No Staining	No Odor	Lab	40.33640159	-104.5654784	1.1
BG01@7'	03/01/22	0.0	No Staining	No Odor	Lab	40.33640159	-104.5654784	1.1
BG01@10-12'	03/01/22	0.0	No Staining	No Odor	Lab	40.33640159	-104.5654784	1.1

Notes:

PID = Photo-ionization detector

ppm = parts per million

PDOP = Position dilution of precision

1.) Latitude and longitude coordinates will be provided in decimal degrees with an accuracy and precision of 5 decimals of a degree using the North American Datum ("NAD") of 1983

TABLE 2
SOIL ANALYTICAL DATA
NOBLE ENERGY, INC. - REISTAD 1 TANK BATTERY

Soil Sample ID	Date	¹ Benzene (mg/kg)	Toluene (mg/kg)	Ethylbenzene (mg/kg)	Total Xylenes (mg/kg)	1,2,4 - TMB (mg/kg)	1,3,5 - TMB (mg/kg)	Naphthalene (mg/kg)	TPH-GRO (mg/kg)	TPH-DRO (mg/kg)	TPH-ORO (mg/kg)	Acenaphthene (mg/kg)	Anthracene (mg/kg)	Benz(a) (mg/kg)	Benzo(a) (mg/kg)	Benzo(b) (mg/kg)	Benzo(k) (mg/kg)	Chrysene (mg/kg)	A,H (mg/kg)	Fluoranthene (mg/kg)	Fluorene (mg/kg)	1,2,3-CD (mg/kg)	Pyrene (mg/kg)	1-M (mg/kg)	2-M (mg/kg)
Residential SSL ²		1.2	490	5.8	58	30	27	2	500			360	1,800	1.1	0.11	1.1	11	110	0.11	240	240	1.1	180	18	24
Protection of Groundwater SSL ^{2,3}		0.0026	0.69	0.78	9.9	0.0081	0.0087	0.0038	500			0.55	6	0.011	0.24	0.3	2.9	9	0.096	8.9	0.54	0.98	1.3	0.006	0.019
AST01@0.5'	07/08/21	<0.00200	<0.00200	<0.00200	<0.00200	<0.00200	<0.00200	<0.00067	<0.200	<50	<200	<0.00067	<0.00067	<0.00067	<0.00067	<0.00067	<0.00067	<0.00067	<0.00067	<0.00067	<0.00067	<0.00067	<0.00067	<0.00067	<0.00067
Sep01-FL01-B@3'	07/08/21	<0.00200	<0.00200	<0.00200	<0.00200	<0.00200	<0.00200	<0.00067	<0.200	<50	<200	<0.00067	<0.00067	0.00203	0.00214	0.00249	0.00144	0.00281	<0.00067	0.00309	<0.00067	0.00114	0.0029	<0.00067	<0.00067
Sep01-DL01@3'	07/08/21	<0.00200	<0.00200	<0.00200	<0.00200	<0.00200	<0.00200	<0.00067	<0.200	<50	<200	<0.00067	<0.00067	<0.00067	<0.00067	<0.00067	<0.00067	<0.00067	<0.00067	<0.00067	<0.00067	<0.00067	<0.00067	<0.00067	<0.00067
SS01@2.5'	07/08/21	<0.00200	<0.00200	<0.00200	<0.00200	<0.00200	<0.00200	<0.00067	<0.200	<50	<200	<0.00067	<0.00067	<0.00067	<0.00067	<0.00067	<0.00067	<0.00067	<0.00067	<0.00067	<0.00067	<0.00067	<0.00067	<0.00067	<0.00067
SS03@2.5'	07/08/21	<0.00200	<0.00200	<0.00200	<0.00200	<0.00200	<0.00200	<0.00067	<0.200	<50	<200	<0.00067	<0.00067	<0.00067	<0.00067	<0.00067	<0.00067	<0.00067	<0.00067	<0.00067	<0.00067	<0.00067	<0.00067	<0.00067	<0.00067
SS04@2.5'	07/08/21	<0.00200	<0.00200	<0.00200	<0.00200	<0.00200	<0.00200	<0.00067	<0.200	<50	<200	<0.00067	<0.00067	<0.00067	<0.00067	<0.00067	<0.00067	<0.00067	<0.00067	<0.00067	<0.00067	<0.00067	<0.00067	<0.00067	<0.00067
SS05@2.5'	07/08/21	<0.00200	<0.00200	<0.00200	<0.00200	<0.00200	<0.00200	<0.00067	<0.200	<50	<200	<0.00067	<0.00067	<0.00067	<0.00067	<0.00067	<0.00067	<0.00067	<0.00067	<0.00067	<0.00067	<0.00067	<0.00067	<0.00067	<0.00067
FS01@7'	07/08/21	0.145	0.0469	0.00806	0.0154	0.00312	<0.00200	<0.00067	0.220	<50	<200	<0.00335	<0.00335	<0.00335	<0.00335	<0.00335	<0.00335	<0.00335	<0.00335	<0.00335	<0.00335	<0.00335	<0.00335	<0.00335	<0.00335
SS06@6'	07/08/21	<0.00200	<0.00200	<0.00200	<0.00200	<0.00200	<0.00200	<0.00067	<0.200	<50	<200	<0.00067	<0.00067	<0.00067	<0.00067	<0.00067	<0.00067	<0.00067	<0.00067	<0.00067	<0.00067	<0.00067	<0.00067	<0.00067	<0.00067
SS07@6'	07/08/21	<0.00200	<0.00200	<0.00200	<0.00200	<0.00200	<0.00200	<0.00067	<0.200	<50	<200	<0.00067	<0.00067	<0.00067	<0.00067	<0.00067	<0.00067	<0.00067	<0.00067	<0.00067	<0.00067	<0.00067	<0.00067	<0.00067	<0.00067
SS08@6'	07/08/21	<0.00200	<0.00200	<0.00200	<0.00200	<0.00200	<0.00200	<0.00067	<0.200	<50	<200	<0.00067	<0.00067	<0.00067	<0.00067	0.000382	<0.00067	<0.00067	<0.00067	<0.00067	<0.00067	<0.00067	<0.00067	<0.00067	<0.00067
SS09@6'	07/08/21	<0.00200	<0.00200	<0.00200	<0.00200	<0.00200	<0.00200	<0.00067	<0.200	<50	<200	<0.00067	<0.00067	<0.00067	<0.00067	<0.00067	<0.00067	<0.00067	<0.00067	<0.00067	<0.00067	<0.00067	<0.00067	<0.00067	<0.00067

Soil Sample ID	Date	pH	SAR	EC (mmhos/cm)	Boron (mg/L)
Residential SSL ²		6 - 8.3	<6	<4mmhos/cm	2
AST01@0.5'	07/08/21	9.33	15.9	0.506	<0.200
Sep01-FL01-B@3'	07/08/21	8.15	0.165	0.259	<0.200
Sep01-DL01@3'	07/08/21	8.05	0.503	0.390	0.220
SS01@2.5'	07/08/21	8.01	0.238	0.470	<0.199
SS03@2.5'	07/08/21	8.05	0.203	0.538	0.22
SS04@2.5'	07/08/21	8.12	0.262	0.361	0.317
SS05@2.5'	07/08/21	7.78	1.67	0.935	0.832
FS01@7'	07/08/21	7.12	20.5	6.42	4.53
SS06@6'	07/08/21	8.05	0.343	0.402	0.218
SS07@6'	07/08/21	7.80	20.5	6.03	3.42
SS08@6'	07/08/21	7.98	1.6	0.766	0.477
SS09@6'	07/08/21	8.24	0.171	0.381	0.281
BG01@0.5'	03/01/22	7.78	3.10	NA	NA
BG01@6'	03/01/22	8.05	0.798	0.784	0.708
BG01@7'	03/01/22	NA	0.728	0.766	0.660

Soil Sample ID	Date	Arsenic (mg/kg)	Barium (mg/kg)	Cadmium (mg/kg)	Chromium (VI) (mg/kg)	Copper (mg/kg)	Lead (mg/kg)	Nickel (mg/kg)	Selenium (mg/kg)	Silver (mg/kg)	Zinc (mg/kg)
Residential SSL ²		0.68	15,000	71	0.3	3,100	400	1,500	390	390	23,000
Protection of Groundwater SSL ²		0.29	82	0.38	0.00067	46	14	26	0.26	0.8	370
FS01@7'	07/08/21	4.17	31	<0.25	<0.488	11.5	9.13	6.25	0.317	<0.25	61.9
BG01@2-3'	03/01/22	3.6	NA	NA	NA	NA	NA	NA	0.374	NA	NA
BG01@7'	03/01/22	4.49	NA	NA	NA	NA	NA	NA	0.279	NA	NA
BG01@10-12'	03/01/22	0.929	NA	NA	NA	NA	NA	NA	0.24	NA	NA

Notes:

- Compounds referenced from 2 CCR 404-1, Table 915-1, effective January 15, 2021.
- Soil Screening Levels (SSL) referenced from EPA Regional Screening Levels (EPA RSLs) for Chemical Contaminants at Superfund Sites, effective November 2020.
- SSLs are applicable if a pathway for communication with groundwater is present.

Definitions:

COGCC = Colorado Oil and Gas Conservation Commission
 TPH-GRO = Total petroleum hydrocarbons - gasoline range organics
 TPH-DRO = Total petroleum hydrocarbons - diesel range organics
 TPH-ORO = Total petroleum hydrocarbons - oil range organics
 mg/kg = Milligrams per kilogram
 SAR = Sodium Adsorption Ratio
 EC = Electrical Conductivity
 mmhos/cm = Millimhos per centimeter
 mg/L = Milligrams per liter
 < = Analytical result is less than the indicated laboratory reporting limit

NA = Not analyzed
 1,2,4 - TMB = 1,2,4 Trimethylbenzene
 1,3,5 - TMB = 1,3,5 Trimethylbenzene
 Benz(a) = Benzanthracene
 Benzo(b) = Benzofluoranthene
 Benzo(k) = Benzofluoranthene
 Benzo(a) = Benzopyrene
 A,H = Dibenzoanthracene
 1,2,3-CD = Indenopyrene
 1-M = 1-methylnaphthalene
 2-M = 2-methylnaphthalene

Highlighted results are equal to or exceed the COGCC Table 915-1 standard

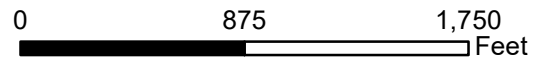
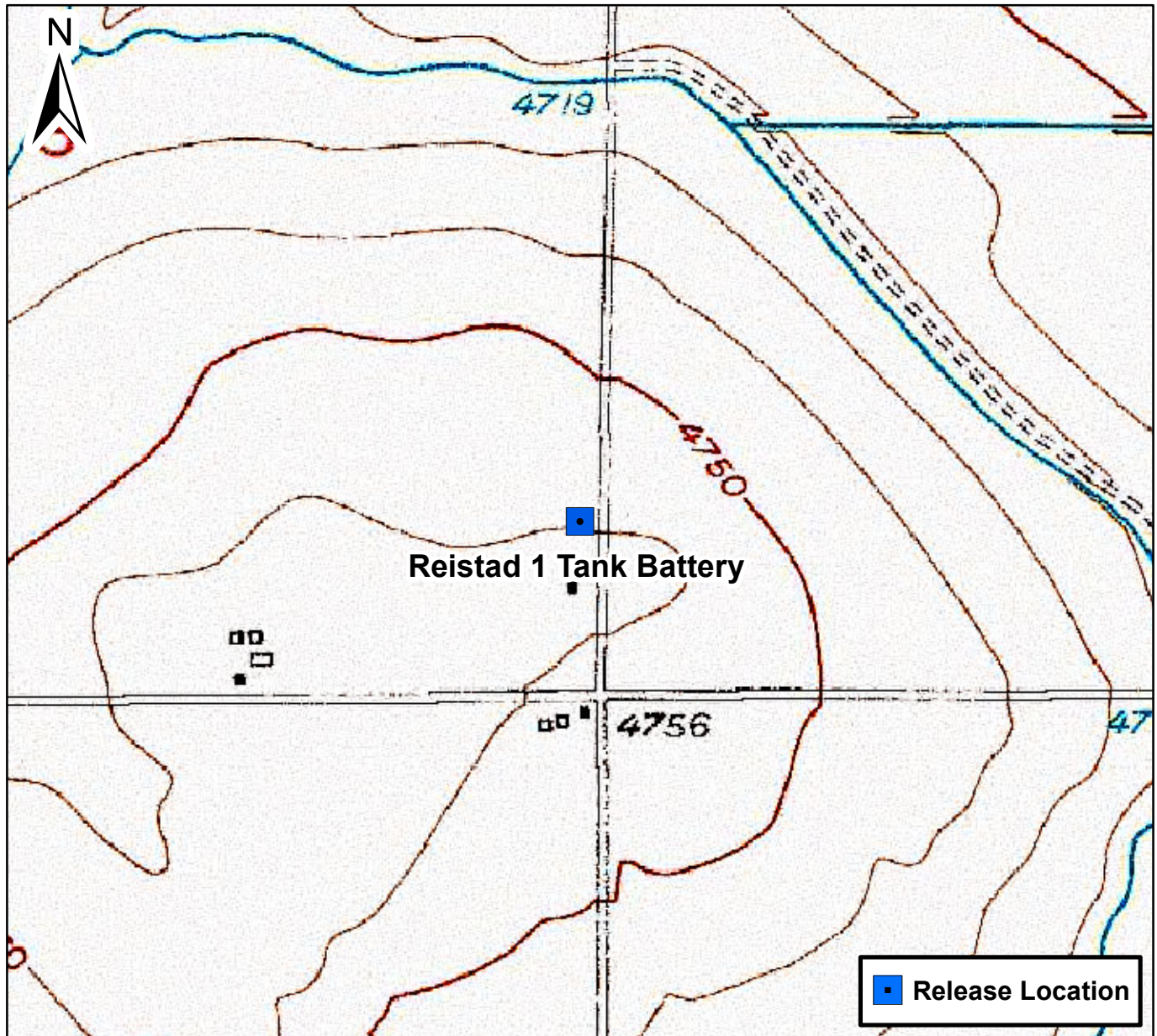


Figure 1

Site Location Map
 Reistad 1 Tank Battery
 SESE 5 T4N R64W
 Weld County, Colorado





Legend

- Excavation Extent (Collected via Trimble GPS)
- + Soil Sample Location – Field Screen (Collected via Trimble GPS)
- + Soil Sample Location – Lab Analyzed (Collected via Trimble GPS)

Notes

- 1) All locations are approximate unless otherwise noted.
- 2) Buried infrastructure has been spatially projected.
- 3) Analytical results below laboratory detection limits or within compliance of COGCC Table 915-1 not shown.
- 4) Concentration in exceedance of COGCC table 915-1 soil standards indicated in **RED**.

GPS – Global Positioning System
 mg/kg – Milligrams Per Kilogram

0 ft. 20 ft. 40 ft.

Image Source: Google Earth; Google 2020

DATE: 07/19/2021

DESIGNED BY: JW

DRAWN BY: CA

TASMAN GEOSCIENCES
 Tasman Geosciences, Inc.
 6855 W 199th Ave
 Broomfield, CO 80020

Noble Energy, Inc. – DJ Basin
Reistad 1 Tank Battery
 SESE, Section 5, Township 4 North, Range 64 West
 Weld County, Colorado

Facility Closure Soil
 Analytical Results Map
 (07/08/2021 & 03/01/2022)

FIGURE 2



July 18, 2021

Tasman Geosciences

Jake Whritenour

6855 West 119th Avenue

Broomfield CO 80020

Project Name - Noble - Reistad 01

Project Number - [none]

Attached are your analytical results for Noble - Reistad 01 received by Origins Laboratory, Inc. July 08, 2021. This project is associated with Origins project number Y107178-01.

The analytical results in the following report were analyzed under the guidelines of EPA Methods. These methods are identified as follows; "SW" are defined in SW-846, "EPA" are defined in 40CFR part 136 and "SM" are defined in the most current revision of Standard Methods For the Examination of Water and Wastewater.

The analytical results apply specifically to the samples and analyses specified per the attached Chain of Custody. As such, this report shall not be reproduced except in full, without the written approval of Origin's laboratory.

Unless otherwise noted, the analytical results for all soil samples are reported on a wet weight basis. All analytical analyses were performed under NELAP guidelines unless noted by a data qualifier.

Any holding time exceedances, deviations from the method specifications or deviations from Origins Laboratory's Standard Operating Procedures are outlined in the case narrative.

Thank you for selecting Origins for your analytical needs. Please contact us with any questions concerning this report, or if we can help with anything at all.

Origins Laboratory, Inc.
303.433.1322
o-squad@oelabinc.com



Tasman Geosciences
6855 West 119th Avenue
Broomfield CO 80020

Jake Whritenour
Project Number: [none]
Project: Noble - Reistad 01

CROSS REFERENCE REPORT

Sample ID	Laboratory ID	Matrix	Date Sampled	Date Received
AST01@0.5	Y107178-01	Soil	July 8, 2021 12:00	07/08/2021 17:30
Sep01-FL01-B@3'	Y107178-02	Soil	July 8, 2021 12:50	07/08/2021 17:30
Sep01-DL01@3'	Y107178-03	Soil	July 8, 2021 12:35	07/08/2021 17:30
SS01@2.5'	Y107178-04	Soil	July 8, 2021 14:00	07/08/2021 17:30
SS03@2.5'	Y107178-05	Soil	July 8, 2021 14:10	07/08/2021 17:30
SS04@2.5'	Y107178-06	Soil	July 8, 2021 14:15	07/08/2021 17:30
SS05@2.5'	Y107178-07	Soil	July 8, 2021 14:35	07/08/2021 17:30
FS01@7'	Y107178-08	Soil	July 8, 2021 14:40	07/08/2021 17:30
SS06@6'	Y107178-09	Soil	July 8, 2021 15:00	07/08/2021 17:30
SS07@6'	Y107178-10	Soil	July 8, 2021 15:05	07/08/2021 17:30
SS08@6'	Y107178-11	Soil	July 8, 2021 15:10	07/08/2021 17:30
SS09@6'	Y107178-12	Soil	July 8, 2021 15:15	07/08/2021 17:30

Origins Laboratory, Inc.



Jen Pellegrini, Project Manager

The results in this report apply to the samples analyzed in accordance with the chain of custody document. This analytical report must be reproduced in its entirety.

Tasman Geosciences
 6855 West 119th Avenue
 Broomfield CO 80020

Jake Whritenour
 Project Number: [none]
 Project: Noble - Reistad 01

Origins Laboratory F-012207-01-R1
Effective Date: 01/09/12

Sample Receipt Checklist


Origins Work Order: 4107178 Client: Tasman
 Checklist Completed by: JP Client Project ID: Noble - Reistad 01
 Date/time completed: 7/8/21 Shipped Via: HD
 (UPS, FedEx, Hand Delivered, Pick-up, etc.)
 Airbill #: NA

Matrix(s) Received: (Check all that apply): Soil/Solid Water Other: _____
 Cooler Number/Temperature: L / 19.4 °C / _____ °C / _____ °C (Describe) _____ °C
 Thermometer ID: TC03

Requirement Description	Yes	No	N/A	Comments (if any)
If samples require cooling, was the temperature between 0°C to ≤ 6°C ⁽¹⁾ ?		X		sampled same day
Is there ice present (document if blue ice is used)	X			
Are custody seals present on cooler? (if so, document in comments if they are signed and dated, broken or intact)		X		
Are custody seals present on each sample container? (if so, document in comments if they are signed and dated, broken or intact)		X		
Were all samples received intact ⁽¹⁾ ?	X			
Was adequate sample volume provided ⁽¹⁾ ?	X			
Are short holding time analytes or samples with HTs due within 48 hours present ⁽¹⁾ ?		X		
Is a chain-of-custody (COC) present and filled out completely ⁽¹⁾ ?	X			
Does the COC agree with the number and type of sample bottles received ⁽¹⁾ ?	X			
Do the sample IDs on the bottle labels match the COC ⁽¹⁾ ?	X			
Is the COC properly relinquished by the client with date and time recorded ⁽¹⁾ ?	X			
For volatiles in water – is there headspace (> ¼ inch bubble) present? If yes, contact client and note in narrative.			Y	
Are samples preserved that require preservation and was it checked ⁽¹⁾ ? (note ID of confirmation instrument used in comments) / (preservation is not confirmed for subcontracted analyses in order to insure sample integrity)/(pH <2 for samples preserved with HNO3, HCL, H2SO4) / (pH >10 for samples preserved with NaAsO2+NaOH, ZnAc+NaOH)			X	

Additional Comments (if any):

⁽¹⁾ If NO, then contact the client before proceeding with analysis and note date/time and person contacted as well as the corrective action to in the additional comments (above) and the case narrative.


 Reviewed by (Project Manager) 7/12/21
 Date/Time Reviewed

Origins Laboratory, Inc.



Jen Pellegrini, Project Manager

The results in this report apply to the samples analyzed in accordance with the chain of custody document. This analytical report must be reproduced in its entirety.

Tasman Geosciences
 6855 West 119th Avenue
 Broomfield CO 80020

Jake Whritenour
 Project Number: [none]
 Project: Noble - Reistad 01

AST01@0.5
7/8/2021 12:00:00PM

Analyte	Result	Min Detection Limit	Reporting Limit	Units	Dilution	Batch	Prepared	Analyzed	Notes
---------	--------	---------------------	-----------------	-------	----------	-------	----------	----------	-------

Origins Laboratory, Inc.
Y107178-01 (Soil)

Boron (DTPA Sorbitol)

Boron	ND		0.200	mg/L	1	B1G0924	07/09/2021	07/12/2021	
-------	----	--	-------	------	---	---------	------------	------------	--

DRO/ORO by EPA 8015D

Diesel (C10-C28)	ND		50.0	mg/kg	1	B1G0921	07/09/2021	07/09/2021	U
Residual Range Organics (C28-C40)	ND		200	"	"	"	"	"	U

Surrogate: *o*-Terphenyl 95.0 % 50-150 " " "

GBTEX+TMBs

1,2,4-Trimethylbenzene	ND		0.00200	mg/kg	1	B1G0920	07/09/2021	07/13/2021	U
1,3,5-Trimethylbenzene	ND		0.00200	"	"	"	"	"	U
Benzene	ND		0.00200	"	"	"	"	"	U
Ethylbenzene	ND		0.00200	"	"	"	"	"	U
Toluene	ND		0.00200	"	"	"	"	"	U
Gasoline Range Hydrocarbons	ND		0.200	"	"	"	"	"	U
Xylenes, total	ND		0.00200	"	"	"	"	"	U

Surrogate: 1,2-Dichloroethane-d4 94.7 % 70-130 " " "

Origins Laboratory, Inc.



Jen Pellegrini, Project Manager

The results in this report apply to the samples analyzed in accordance with the chain of custody document. This analytical report must be reproduced in its entirety.

Tasman Geosciences
 6855 West 119th Avenue
 Broomfield CO 80020

Jake Whritenour
 Project Number: [none]
 Project: Noble - Reistad 01

AST01@0.5
7/8/2021 12:00:00PM

Analyte	Result	Min Detection Limit	Reporting Limit	Units	Dilution	Batch	Prepared	Analyzed	Notes
---------	--------	---------------------	-----------------	-------	----------	-------	----------	----------	-------

Origins Laboratory, Inc.
Y107178-01 (Soil)

GBTEX+TMBs

Surrogate: Toluene-d8	92.5 %		70-130			B1G09 20	07/09/2021	07/13/2021	
Surrogate: 4-Bromofluorobenzene	99.5 %		70-130			"	"	"	

Metals by Saturated Paste

Calcium	0.109		0.0499	meq/L	1	[CALC]	07/12/2021	07/13/2021	
Magnesium	ND		0.0823	"	"	"	"	"	
Sodium	3.68		0.0435	"	"	"	"	"	

PAH by 8270D SIM

1-Methylnaphthalene	ND	0.00048	0.00067	mg/Kg	1	L563221	07/12/2021	07/12/2021	
2-Methylnaphthalene	ND	0.000542	0.00067	"	"	"	"	"	
Acenaphthene	ND	0.000431	0.00067	"	"	"	"	"	
Anthracene	ND	0.000426	0.00067	"	"	"	"	"	
Benzo(a)anthracene	ND	0.000441	0.00067	"	"	"	"	"	
Benzo(a)pyrene	ND	0.000133	0.00067	"	"	"	"	"	
Benzo(b)fluoranthene	ND	0.000138	0.00067	"	"	"	"	"	
Benzo(k)fluoranthene	ND	0.000486	0.00067	"	"	"	"	"	
Chrysene	ND	0.000256	0.00067	"	"	"	"	"	
Dibenz(a,h)anthracene	ND	0.000279	0.00067	"	"	"	"	"	
Fluoranthene	ND	0.000529	0.00067	"	"	"	"	"	

Origins Laboratory, Inc.



Jen Pellegrini, Project Manager

The results in this report apply to the samples analyzed in accordance with the chain of custody document. This analytical report must be reproduced in its entirety.

Tasman Geosciences
 6855 West 119th Avenue
 Broomfield CO 80020

Jake Whritenour
 Project Number: [none]
 Project: Noble - Reistad 01

AST01@0.5
7/8/2021 12:00:00PM

Analyte	Result	Min Detection Limit	Reporting Limit	Units	Dilution	Batch	Prepared	Analyzed	Notes
---------	--------	---------------------	-----------------	-------	----------	-------	----------	----------	-------

Waypoint Analytical, Inc.
Y107178-01 (Soil)

PAH by 8270D SIM

Fluorene	ND	0.000501	0.00067	mg/Kg	1	L563221	07/12/2021	07/12/2021	
Indeno(1,2,3-cd)pyrene	ND	0.000344	0.00067	"	"	"	"	"	
Naphthalene	ND	0.000467	0.00067	"	"	"	"	"	
Pyrene	ND	0.000387	0.00067	"	"	"	"	"	

Surrogate: 2-Fluorobiphenyl	75.4 %		33-115			"	"	"	
Surrogate: 4-Terphenyl-d14	86.2 %		33-122			"	"	"	
Surrogate: Nitrobenzene-d5	66.5 %		29-110			"	"	"	

pH in Soil by EPA 9045D

pH	9.33			pH Units	1	B1G1210	07/12/2021	07/13/2021	
----	------	--	--	----------	---	---------	------------	------------	--

SAR by 20B Saturated Paste

SAR	15.9			SAR	1	B1G1216	07/12/2021	07/13/2021	
-----	------	--	--	-----	---	---------	------------	------------	--

Specific Conductance by Modified 9050A

Specific Conductance (EC)	0.506		0.00500	mmhos/cm	1	B1G1213	07/12/2021	07/13/2021	
---------------------------	-------	--	---------	----------	---	---------	------------	------------	--

Origins Laboratory, Inc.



Jen Pellegrini, Project Manager

The results in this report apply to the samples analyzed in accordance with the chain of custody document. This analytical report must be reproduced in its entirety.

Tasman Geosciences
 6855 West 119th Avenue
 Broomfield CO 80020

Jake Whritenour
 Project Number: [none]
 Project: Noble - Reistad 01

Sep01-FL01-B@3'
7/8/2021 12:50:00PM

Analyte	Result	Min Detection Limit	Reporting Limit	Units	Dilution	Batch	Prepared	Analyzed	Notes
---------	--------	---------------------	-----------------	-------	----------	-------	----------	----------	-------

Origins Laboratory, Inc.
Y107178-02 (Soil)

Boron (DTPA Sorbitol)

Boron	ND		0.200	mg/L	1	B1G0924	07/09/2021	07/12/2021	
-------	----	--	-------	------	---	---------	------------	------------	--

DRO/ORO by EPA 8015D

Diesel (C10-C28)	ND		50.0	mg/kg	1	B1G0921	07/09/2021	07/09/2021	U
Residual Range Organics (C28-C40)	ND		200	"	"	"	"	"	U

Surrogate: o-Terphenyl	76.2 %		50-150			"	"	"	
------------------------	--------	--	--------	--	--	---	---	---	--

GBTEX+TMBs

1,2,4-Trimethylbenzene	ND		0.00200	mg/kg	1	B1G1201	07/12/2021	07/13/2021	U
1,3,5-Trimethylbenzene	ND		0.00200	"	"	"	"	"	U
Benzene	ND		0.00200	"	"	"	"	"	U
Ethylbenzene	ND		0.00200	"	"	"	"	"	U
Toluene	ND		0.00200	"	"	"	"	"	U
Gasoline Range Hydrocarbons	ND		0.200	"	"	"	"	"	U
Xylenes, total	ND		0.00200	"	"	"	"	"	U

Surrogate: 1,2-Dichloroethane-d4	91.8 %		70-130			"	"	"	
----------------------------------	--------	--	--------	--	--	---	---	---	--

Origins Laboratory, Inc.



Jen Pellegrini, Project Manager

The results in this report apply to the samples analyzed in accordance with the chain of custody document. This analytical report must be reproduced in its entirety.

Tasman Geosciences
 6855 West 119th Avenue
 Broomfield CO 80020

Jake Whritenour
 Project Number: [none]
 Project: Noble - Reistad 01

Sep01-FL01-B@3'
7/8/2021 12:50:00PM

Analyte	Result	Min Detection Limit	Reporting Limit	Units	Dilution	Batch	Prepared	Analyzed	Notes
---------	--------	---------------------	-----------------	-------	----------	-------	----------	----------	-------

Origins Laboratory, Inc.
Y107178-02 (Soil)

GBTEX+TMBs

Surrogate: Toluene-d8	94.1 %		70-130			B1G12 01	07/12/2021	07/13/2021	
Surrogate: 4-Bromofluorobenzene	101 %		70-130			"	"	"	

Metals by Saturated Paste

Calcium	1.52		0.0499	meq/L	1	[CALC]	07/12/2021	07/13/2021	
Magnesium	0.489		0.0823	"	"	"	"	"	
Sodium	0.165		0.0435	"	"	"	"	"	

PAH by 8270D SIM

1-Methylnaphthalene	ND	0.00048	0.00067	mg/Kg	1	L563221	07/12/2021	07/12/2021	
2-Methylnaphthalene	ND	0.000542	0.00067	"	"	"	"	"	
Acenaphthene	ND	0.000431	0.00067	"	"	"	"	"	
Anthracene	ND	0.000426	0.00067	"	"	"	"	"	
Benzo(a)anthracene	0.00203	0.000441	0.00067	"	"	"	"	"	
Benzo(a)pyrene	0.00214	0.000133	0.00067	"	"	"	"	"	
Benzo(b)fluoranthene	0.00249	0.000138	0.00067	"	"	"	"	"	
Benzo(k)fluoranthene	0.00144	0.000486	0.00067	"	"	"	"	"	
Chrysene	0.00281	0.000256	0.00067	"	"	"	"	"	
Dibenz(a,h)anthracene	ND	0.000279	0.00067	"	"	"	"	"	
Fluoranthene	0.00309	0.000529	0.00067	"	"	"	"	"	
Fluorene	ND	0.000501	0.00067	"	"	"	"	"	

Origins Laboratory, Inc.



Jen Pellegrini, Project Manager

The results in this report apply to the samples analyzed in accordance with the chain of custody document. This analytical report must be reproduced in its entirety.

Tasman Geosciences
 6855 West 119th Avenue
 Broomfield CO 80020

Jake Whritenour
 Project Number: [none]
 Project: Noble - Reistad 01

Sep01-FL01-B@3'
7/8/2021 12:50:00PM

Analyte	Result	Min Detection Limit	Reporting Limit	Units	Dilution	Batch	Prepared	Analyzed	Notes
---------	--------	---------------------	-----------------	-------	----------	-------	----------	----------	-------

Waypoint Analytical, Inc.
Y107178-02 (Soil)

PAH by 8270D SIM

Indeno(1,2,3-cd)pyrene	0.00114	0.000344	0.00067	mg/Kg	1	L563221	07/12/2021	07/12/2021	
Naphthalene	ND	0.000467	0.00067	"	"	"	"	"	
Pyrene	0.0029	0.000387	0.00067	"	"	"	"	"	

Surrogate: 2-Fluorobiphenyl	73.4 %		33-115			"	"	"	
Surrogate: 4-Terphenyl-d14	87.5 %		33-122			"	"	"	
Surrogate: Nitrobenzene-d5	67 %		29-110			"	"	"	

pH in Soil by EPA 9045D

pH	8.15			pH Units	1	B1G1210	07/12/2021	07/13/2021	
----	------	--	--	----------	---	---------	------------	------------	--

SAR by 20B Saturated Paste

SAR	0.165			SAR	1	B1G1216	07/12/2021	07/13/2021	
-----	-------	--	--	-----	---	---------	------------	------------	--

Specific Conductance by Modified 9050A

Specific Conductance (EC)	0.259		0.00500	mmhos/cm	1	B1G1213	07/12/2021	07/13/2021	
---------------------------	-------	--	---------	----------	---	---------	------------	------------	--

Origins Laboratory, Inc.



Jen Pellegrini, Project Manager

The results in this report apply to the samples analyzed in accordance with the chain of custody document. This analytical report must be reproduced in its entirety.

Tasman Geosciences
 6855 West 119th Avenue
 Broomfield CO 80020

Jake Whritenour
 Project Number: [none]
 Project: Noble - Reistad 01

Sep01-DL01@3'
 7/8/2021 12:35:00PM

Analyte	Result	Min Detection Limit	Reporting Limit	Units	Dilution	Batch	Prepared	Analyzed	Notes
---------	--------	---------------------	-----------------	-------	----------	-------	----------	----------	-------

Origins Laboratory, Inc.
 Y107178-03 (Soil)

Boron (DTPA Sorbitol)

Boron	0.220		0.200	mg/L	1	B1G0924	07/09/2021	07/12/2021	
-------	-------	--	-------	------	---	---------	------------	------------	--

DRO/ORO by EPA 8015D

Diesel (C10-C28)	ND		50.0	mg/kg	1	B1G0921	07/09/2021	07/09/2021	U
Residual Range Organics (C28-C40)	ND		200	"	"	"	"	"	U

Surrogate: o-Terphenyl	82.5 %		50-150			"	"	"	
------------------------	--------	--	--------	--	--	---	---	---	--

GBTEX+TMBs

1,2,4-Trimethylbenzene	ND		0.00200	mg/kg	1	B1G1201	07/12/2021	07/13/2021	U
1,3,5-Trimethylbenzene	ND		0.00200	"	"	"	"	"	U
Benzene	ND		0.00200	"	"	"	"	"	U
Ethylbenzene	ND		0.00200	"	"	"	"	"	U
Toluene	ND		0.00200	"	"	"	"	"	U
Gasoline Range Hydrocarbons	ND		0.200	"	"	"	"	"	U
Xylenes, total	ND		0.00200	"	"	"	"	"	U

Surrogate: 1,2-Dichloroethane-d4	90.9 %		70-130			"	"	"	
----------------------------------	--------	--	--------	--	--	---	---	---	--

Origins Laboratory, Inc.



Jen Pellegrini, Project Manager

The results in this report apply to the samples analyzed in accordance with the chain of custody document. This analytical report must be reproduced in its entirety.

Tasman Geosciences
 6855 West 119th Avenue
 Broomfield CO 80020

Jake Whritenour
 Project Number: [none]
 Project: Noble - Reistad 01

Sep01-DL01@3'
 7/8/2021 12:35:00PM

Analyte	Result	Min Detection Limit	Reporting Limit	Units	Dilution	Batch	Prepared	Analyzed	Notes
---------	--------	---------------------	-----------------	-------	----------	-------	----------	----------	-------

Origins Laboratory, Inc.
 Y107178-03 (Soil)

GBTEX+TMBs

Surrogate: Toluene-d8	93.6 %		70-130			B1G12 01	07/12/2021	07/13/2021	
Surrogate: 4-Bromofluorobenzene	102 %		70-130			"	"	"	

Metals by Saturated Paste

Calcium	1.95		0.0499	meq/L	1	[CALC]	07/12/2021	07/13/2021	
Magnesium	0.777		0.0823	"	"	"	"	"	
Sodium	0.587		0.0435	"	"	"	"	"	

PAH by 8270D SIM

1-Methylnaphthalene	ND	0.00048	0.00067	mg/Kg	1	L563221	07/12/2021	07/12/2021	
2-Methylnaphthalene	ND	0.000542	0.00067	"	"	"	"	"	
Acenaphthene	ND	0.000431	0.00067	"	"	"	"	"	
Anthracene	ND	0.000426	0.00067	"	"	"	"	"	
Benzo(a)anthracene	ND	0.000441	0.00067	"	"	"	"	"	
Benzo(a)pyrene	0.000527	0.000133	0.00067	"	"	"	"	"	J
Benzo(b)fluoranthene	0.000485	0.000138	0.00067	"	"	"	"	"	J
Benzo(k)fluoranthene	ND	0.000486	0.00067	"	"	"	"	"	
Chrysene	0.000292	0.000256	0.00067	"	"	"	"	"	J
Dibenz(a,h)anthracene	ND	0.000279	0.00067	"	"	"	"	"	
Fluoranthene	ND	0.000529	0.00067	"	"	"	"	"	
Fluorene	ND	0.000501	0.00067	"	"	"	"	"	

Origins Laboratory, Inc.



Jen Pellegrini, Project Manager

The results in this report apply to the samples analyzed in accordance with the chain of custody document. This analytical report must be reproduced in its entirety.

Tasman Geosciences
 6855 West 119th Avenue
 Broomfield CO 80020

Jake Whritenour
 Project Number: [none]
 Project: Noble - Reistad 01

Sep01-DL01@3'
 7/8/2021 12:35:00PM

Analyte	Result	Min Detection Limit	Reporting Limit	Units	Dilution	Batch	Prepared	Analyzed	Notes
---------	--------	---------------------	-----------------	-------	----------	-------	----------	----------	-------

Waypoint Analytical, Inc.
 Y107178-03 (Soil)

PAH by 8270D SIM

Indeno(1,2,3-cd)pyrene	ND	0.000344	0.00067	mg/Kg	1	L563221	07/12/2021	07/12/2021	
Naphthalene	ND	0.000467	0.00067	"	"	"	"	"	
Pyrene	0.000443	0.000387	0.00067	"	"	"	"	"	J

Surrogate: 2-Fluorobiphenyl	63.4 %		33-115			"	"	"	
Surrogate: 4-Terphenyl-d14	73.6 %		33-122			"	"	"	
Surrogate: Nitrobenzene-d5	55.9 %		29-110			"	"	"	

pH in Soil by EPA 9045D

pH	8.05			pH Units	1	B1G1210	07/12/2021	07/13/2021	
----	-------------	--	--	----------	---	---------	------------	------------	--

SAR by 20B Saturated Paste

SAR	0.503			SAR	1	B1G1216	07/12/2021	07/13/2021	
-----	--------------	--	--	-----	---	---------	------------	------------	--

Specific Conductance by Modified 9050A

Specific Conductance (EC)	0.390		0.00500	mmhos/cm	1	B1G1213	07/12/2021	07/13/2021	
---------------------------	--------------	--	---------	----------	---	---------	------------	------------	--

Origins Laboratory, Inc.



Jen Pellegrini, Project Manager

The results in this report apply to the samples analyzed in accordance with the chain of custody document. This analytical report must be reproduced in its entirety.

Tasman Geosciences
 6855 West 119th Avenue
 Broomfield CO 80020

Jake Whritenour
 Project Number: [none]
 Project: Noble - Reistad 01

SS01@2.5'

7/8/2021 2:00:00PM

Analyte	Result	Min Detection Limit	Reporting Limit	Units	Dilution	Batch	Prepared	Analyzed	Notes
---------	--------	---------------------	-----------------	-------	----------	-------	----------	----------	-------

Origins Laboratory, Inc.
Y107178-04 (Soil)

Boron (DTPA Sorbitol)

Boron	ND		0.199	mg/L	1	B1G0924	07/09/2021	07/12/2021	
-------	----	--	-------	------	---	---------	------------	------------	--

DRO/ORO by EPA 8015D

Diesel (C10-C28)	ND		50.0	mg/kg	1	B1G0921	07/09/2021	07/09/2021	U
Residual Range Organics (C28-C40)	ND		200	"	"	"	"	"	U

Surrogate: *o*-Terphenyl 74.9 % 50-150 " " "

GBTEX+TMBs

1,2,4-Trimethylbenzene	ND		0.00200	mg/kg	1	B1G1201	07/12/2021	07/13/2021	U
1,3,5-Trimethylbenzene	ND		0.00200	"	"	"	"	"	U
Benzene	ND		0.00200	"	"	"	"	"	U
Ethylbenzene	ND		0.00200	"	"	"	"	"	U
Toluene	ND		0.00200	"	"	"	"	"	U
Gasoline Range Hydrocarbons	ND		0.200	"	"	"	"	"	U
Xylenes, total	ND		0.00200	"	"	"	"	"	U

Surrogate: 1,2-Dichloroethane-d4 91.6 % 70-130 " " "

Origins Laboratory, Inc.



Jen Pellegrini, Project Manager

The results in this report apply to the samples analyzed in accordance with the chain of custody document. This analytical report must be reproduced in its entirety.

Tasman Geosciences
 6855 West 119th Avenue
 Broomfield CO 80020

Jake Whritenour
 Project Number: [none]
 Project: Noble - Reistad 01

SS01@2.5'

7/8/2021 2:00:00PM

Analyte	Result	Min Detection Limit	Reporting Limit	Units	Dilution	Batch	Prepared	Analyzed	Notes
---------	--------	---------------------	-----------------	-------	----------	-------	----------	----------	-------

Origins Laboratory, Inc.
Y107178-04 (Soil)

GBTEX+TMBs

Surrogate: Toluene-d8	94.7 %		70-130			B1G12 01	07/12/2021	07/13/2021	
Surrogate: 4-Bromofluorobenzene	102 %		70-130			"	"	"	

Metals by Saturated Paste

Calcium	2.61		0.0499	meq/L	1	[CALC]	07/12/2021	07/13/2021	
Magnesium	0.893		0.0823	"	"	"	"	"	
Sodium	0.314		0.0435	"	"	"	"	"	

PAH by 8270D SIM

1-Methylnaphthalene	ND	0.00048	0.00067	mg/Kg	1	L563221	07/12/2021	07/12/2021	
2-Methylnaphthalene	ND	0.000542	0.00067	"	"	"	"	"	
Acenaphthene	ND	0.000431	0.00067	"	"	"	"	"	
Anthracene	ND	0.000426	0.00067	"	"	"	"	"	
Benzo(a)anthracene	ND	0.000441	0.00067	"	"	"	"	"	
Benzo(a)pyrene	ND	0.000133	0.00067	"	"	"	"	"	
Benzo(b)fluoranthene	ND	0.000138	0.00067	"	"	"	"	"	
Benzo(k)fluoranthene	ND	0.000486	0.00067	"	"	"	"	"	
Chrysene	ND	0.000256	0.00067	"	"	"	"	"	
Dibenz(a,h)anthracene	ND	0.000279	0.00067	"	"	"	"	"	
Fluoranthene	ND	0.000529	0.00067	"	"	"	"	"	

Origins Laboratory, Inc.



Jen Pellegrini, Project Manager

The results in this report apply to the samples analyzed in accordance with the chain of custody document. This analytical report must be reproduced in its entirety.

Tasman Geosciences
 6855 West 119th Avenue
 Broomfield CO 80020

Jake Whritenour
 Project Number: [none]
 Project: Noble - Reistad 01

SS01@2.5'

7/8/2021 2:00:00PM

Analyte	Result	Min Detection Limit	Reporting Limit	Units	Dilution	Batch	Prepared	Analyzed	Notes
---------	--------	---------------------	-----------------	-------	----------	-------	----------	----------	-------

Waypoint Analytical, Inc.
Y107178-04 (Soil)

PAH by 8270D SIM

Fluorene	ND	0.000501	0.00067	mg/Kg	1	L563221	07/12/2021	07/12/2021	
Indeno(1,2,3-cd)pyrene	ND	0.000344	0.00067	"	"	"	"	"	
Naphthalene	ND	0.000467	0.00067	"	"	"	"	"	
Pyrene	ND	0.000387	0.00067	"	"	"	"	"	

Surrogate: 2-Fluorobiphenyl	78.3 %		33-115			"	"	"	
Surrogate: 4-Terphenyl-d14	85.8 %		33-122			"	"	"	
Surrogate: Nitrobenzene-d5	69.9 %		29-110			"	"	"	

pH in Soil by EPA 9045D

pH	8.01			pH Units	1	B1G1210	07/12/2021	07/13/2021	
----	------	--	--	----------	---	---------	------------	------------	--

SAR by 20B Saturated Paste

SAR	0.238			SAR	1	B1G1216	07/12/2021	07/13/2021	
-----	-------	--	--	-----	---	---------	------------	------------	--

Specific Conductance by Modified 9050A

Specific Conductance (EC)	0.470		0.00500	mmhos/cm	1	B1G1213	07/12/2021	07/13/2021	
---------------------------	-------	--	---------	----------	---	---------	------------	------------	--

Origins Laboratory, Inc.



Jen Pellegrini, Project Manager

The results in this report apply to the samples analyzed in accordance with the chain of custody document. This analytical report must be reproduced in its entirety.

Tasman Geosciences
 6855 West 119th Avenue
 Broomfield CO 80020

Jake Whritenour
 Project Number: [none]
 Project: Noble - Reistad 01

SS03@2.5'

7/8/2021 2:10:00PM

Analyte	Result	Min Detection Limit	Reporting Limit	Units	Dilution	Batch	Prepared	Analyzed	Notes
---------	--------	---------------------	-----------------	-------	----------	-------	----------	----------	-------

Origins Laboratory, Inc.
Y107178-05 (Soil)

Boron (DTPA Sorbitol)

Boron	0.220		0.200	mg/L	1	B1G0924	07/09/2021	07/12/2021	
-------	-------	--	-------	------	---	---------	------------	------------	--

DRO/ORO by EPA 8015D

Diesel (C10-C28)	ND		50.0	mg/kg	1	B1G0921	07/09/2021	07/09/2021	U
Residual Range Organics (C28-C40)	ND		200	"	"	"	"	"	U

Surrogate: o-Terphenyl	75.5 %		50-150			"	"	"	
------------------------	--------	--	--------	--	--	---	---	---	--

GBTEX+TMBs

1,2,4-Trimethylbenzene	ND		0.00200	mg/kg	1	B1G0920	07/09/2021	07/13/2021	U
1,3,5-Trimethylbenzene	ND		0.00200	"	"	"	"	"	U
Benzene	ND		0.00200	"	"	"	"	"	U
Ethylbenzene	ND		0.00200	"	"	"	"	"	U
Toluene	ND		0.00200	"	"	"	"	"	U
Gasoline Range Hydrocarbons	ND		0.200	"	"	"	"	"	U
Xylenes, total	ND		0.00200	"	"	"	"	"	U

Surrogate: 1,2-Dichloroethane-d4	92.4 %		70-130			"	"	"	
----------------------------------	--------	--	--------	--	--	---	---	---	--

Origins Laboratory, Inc.



Jen Pellegrini, Project Manager

The results in this report apply to the samples analyzed in accordance with the chain of custody document. This analytical report must be reproduced in its entirety.

Tasman Geosciences
 6855 West 119th Avenue
 Broomfield CO 80020

Jake Whritenour
 Project Number: [none]
 Project: Noble - Reistad 01

SS03@2.5'

7/8/2021 2:10:00PM

Analyte	Result	Min Detection Limit	Reporting Limit	Units	Dilution	Batch	Prepared	Analyzed	Notes
---------	--------	---------------------	-----------------	-------	----------	-------	----------	----------	-------

Origins Laboratory, Inc.
Y107178-05 (Soil)

GBTEX+TMBs

Surrogate: Toluene-d8	93.5 %		70-130			B1G09 20	07/09/2021	07/13/2021	
Surrogate: 4-Bromofluorobenzene	102 %		70-130			"	"	"	

Metals by Saturated Paste

Calcium	1.81		0.0499	meq/L	1	[CALC]	07/12/2021	07/13/2021	
Magnesium	0.715		0.0823	"	"	"	"	"	
Sodium	0.229		0.0435	"	"	"	"	"	

PAH by 8270D SIM

1-Methylnaphthalene	ND	0.00048	0.00067	mg/Kg	1	L563221	07/12/2021	07/12/2021	
2-Methylnaphthalene	ND	0.000542	0.00067	"	"	"	"	"	
Acenaphthene	ND	0.000431	0.00067	"	"	"	"	"	
Anthracene	ND	0.000426	0.00067	"	"	"	"	"	
Benzo(a)anthracene	ND	0.000441	0.00067	"	"	"	"	"	
Benzo(a)pyrene	ND	0.000133	0.00067	"	"	"	"	"	
Benzo(b)fluoranthene	ND	0.000138	0.00067	"	"	"	"	"	
Benzo(k)fluoranthene	ND	0.000486	0.00067	"	"	"	"	"	
Chrysene	ND	0.000256	0.00067	"	"	"	"	"	
Dibenz(a,h)anthracene	ND	0.000279	0.00067	"	"	"	"	"	
Fluoranthene	ND	0.000529	0.00067	"	"	"	"	"	

Origins Laboratory, Inc.



Jen Pellegrini, Project Manager

The results in this report apply to the samples analyzed in accordance with the chain of custody document. This analytical report must be reproduced in its entirety.

Tasman Geosciences
 6855 West 119th Avenue
 Broomfield CO 80020

Jake Whritenour
 Project Number: [none]
 Project: Noble - Reistad 01

SS03@2.5'

7/8/2021 2:10:00PM

Analyte	Result	Min Detection Limit	Reporting Limit	Units	Dilution	Batch	Prepared	Analyzed	Notes
---------	--------	---------------------	-----------------	-------	----------	-------	----------	----------	-------

Waypoint Analytical, Inc.
Y107178-05 (Soil)

PAH by 8270D SIM

Fluorene	ND	0.000501	0.00067	mg/Kg	1	L563221	07/12/2021	07/12/2021	
Indeno(1,2,3-cd)pyrene	ND	0.000344	0.00067	"	"	"	"	"	
Naphthalene	ND	0.000467	0.00067	"	"	"	"	"	
Pyrene	ND	0.000387	0.00067	"	"	"	"	"	

Surrogate: 2-Fluorobiphenyl	72.7 %		33-115			"	"	"	
Surrogate: 4-Terphenyl-d14	82.3 %		33-122			"	"	"	
Surrogate: Nitrobenzene-d5	64.9 %		29-110			"	"	"	

pH in Soil by EPA 9045D

pH	8.05			pH Units	1	B1G1210	07/12/2021	07/13/2021	
----	------	--	--	----------	---	---------	------------	------------	--

SAR by 20B Saturated Paste

SAR	0.203			SAR	1	B1G1216	07/12/2021	07/13/2021	
-----	-------	--	--	-----	---	---------	------------	------------	--

Specific Conductance by Modified 9050A

Specific Conductance (EC)	0.538		0.00500	mmhos/cm	1	B1G1213	07/12/2021	07/13/2021	
---------------------------	-------	--	---------	----------	---	---------	------------	------------	--

Origins Laboratory, Inc.



Jen Pellegrini, Project Manager

The results in this report apply to the samples analyzed in accordance with the chain of custody document. This analytical report must be reproduced in its entirety.

Tasman Geosciences
 6855 West 119th Avenue
 Broomfield CO 80020

Jake Whritenour
 Project Number: [none]
 Project: Noble - Reistad 01

SS04@2.5'

7/8/2021 2:15:00PM

Analyte	Result	Min Detection Limit	Reporting Limit	Units	Dilution	Batch	Prepared	Analyzed	Notes
---------	--------	---------------------	-----------------	-------	----------	-------	----------	----------	-------

Origins Laboratory, Inc.
Y107178-06 (Soil)

Boron (DTPA Sorbitol)

Boron	0.317		0.198	mg/L	1	B1G0924	07/09/2021	07/12/2021	
-------	-------	--	-------	------	---	---------	------------	------------	--

DRO/ORO by EPA 8015D

Diesel (C10-C28)	ND		50.0	mg/kg	1	B1G0921	07/09/2021	07/09/2021	U
Residual Range Organics (C28-C40)	ND		200	"	"	"	"	"	U

Surrogate: o-Terphenyl	66.1 %		50-150			"	"	"	
------------------------	--------	--	--------	--	--	---	---	---	--

GBTEX+TMBs

1,2,4-Trimethylbenzene	ND		0.00200	mg/kg	1	B1G0920	07/09/2021	07/13/2021	U
1,3,5-Trimethylbenzene	ND		0.00200	"	"	"	"	"	U
Benzene	ND		0.00200	"	"	"	"	"	U
Ethylbenzene	ND		0.00200	"	"	"	"	"	U
Toluene	ND		0.00200	"	"	"	"	"	U
Gasoline Range Hydrocarbons	ND		0.200	"	"	"	"	"	U
Xylenes, total	ND		0.00200	"	"	"	"	"	U

Surrogate: 1,2-Dichloroethane-d4	95.9 %		70-130			"	"	"	
----------------------------------	--------	--	--------	--	--	---	---	---	--

Origins Laboratory, Inc.



Jen Pellegrini, Project Manager

The results in this report apply to the samples analyzed in accordance with the chain of custody document. This analytical report must be reproduced in its entirety.

Tasman Geosciences
 6855 West 119th Avenue
 Broomfield CO 80020

Jake Whritenour
 Project Number: [none]
 Project: Noble - Reistad 01

SS04@2.5'

7/8/2021 2:15:00PM

Analyte	Result	Min Detection Limit	Reporting Limit	Units	Dilution	Batch	Prepared	Analyzed	Notes
---------	--------	---------------------	-----------------	-------	----------	-------	----------	----------	-------

Origins Laboratory, Inc.
Y107178-06 (Soil)

GBTEX+TMBs

Surrogate: Toluene-d8	91.6 %		70-130			B1G09 20	07/09/2021	07/13/2021	
Surrogate: 4-Bromofluorobenzene	99.2 %		70-130			"	"	"	

Metals by Saturated Paste

Calcium	1.87		0.0499	meq/L	1	[CALC]	07/12/2021	07/13/2021	
Magnesium	0.615		0.0823	"	"	"	"	"	
Sodium	0.292		0.0435	"	"	"	"	"	

PAH by 8270D SIM

1-Methylnaphthalene	ND	0.00048	0.00067	mg/Kg	1	L563221	07/12/2021	07/12/2021	
2-Methylnaphthalene	ND	0.000542	0.00067	"	"	"	"	"	
Acenaphthene	ND	0.000431	0.00067	"	"	"	"	"	
Anthracene	ND	0.000426	0.00067	"	"	"	"	"	
Benzo(a)anthracene	ND	0.000441	0.00067	"	"	"	"	"	
Benzo(a)pyrene	ND	0.000133	0.00067	"	"	"	"	"	
Benzo(b)fluoranthene	ND	0.000138	0.00067	"	"	"	"	"	
Benzo(k)fluoranthene	ND	0.000486	0.00067	"	"	"	"	"	
Chrysene	ND	0.000256	0.00067	"	"	"	"	"	
Dibenz(a,h)anthracene	ND	0.000279	0.00067	"	"	"	"	"	
Fluoranthene	ND	0.000529	0.00067	"	"	"	"	"	

Origins Laboratory, Inc.



Jen Pellegrini, Project Manager

The results in this report apply to the samples analyzed in accordance with the chain of custody document. This analytical report must be reproduced in its entirety.

Tasman Geosciences
 6855 West 119th Avenue
 Broomfield CO 80020

Jake Whritenour
 Project Number: [none]
 Project: Noble - Reistad 01

SS04@2.5'

7/8/2021 2:15:00PM

Analyte	Result	Min Detection Limit	Reporting Limit	Units	Dilution	Batch	Prepared	Analyzed	Notes
---------	--------	---------------------	-----------------	-------	----------	-------	----------	----------	-------

Waypoint Analytical, Inc.
Y107178-06 (Soil)

PAH by 8270D SIM

Fluorene	ND	0.000501	0.00067	mg/Kg	1	L563221	07/12/2021	07/12/2021	
Indeno(1,2,3-cd)pyrene	ND	0.000344	0.00067	"	"	"	"	"	
Naphthalene	ND	0.000467	0.00067	"	"	"	"	"	
Pyrene	ND	0.000387	0.00067	"	"	"	"	"	

Surrogate: 2-Fluorobiphenyl	76.7 %		33-115			"	"	"	
Surrogate: 4-Terphenyl-d14	82.8 %		33-122			"	"	"	
Surrogate: Nitrobenzene-d5	69.3 %		29-110			"	"	"	

pH in Soil by EPA 9045D

pH	8.12			pH Units	1	B1G1210	07/12/2021	07/13/2021	
----	------	--	--	----------	---	---------	------------	------------	--

SAR by 20B Saturated Paste

SAR	0.262			SAR	1	B1G1216	07/12/2021	07/13/2021	
-----	-------	--	--	-----	---	---------	------------	------------	--

Specific Conductance by Modified 9050A

Specific Conductance (EC)	0.361		0.00500	mmhos/cm	1	B1G1213	07/12/2021	07/13/2021	
---------------------------	-------	--	---------	----------	---	---------	------------	------------	--

Origins Laboratory, Inc.



Jen Pellegrini, Project Manager

The results in this report apply to the samples analyzed in accordance with the chain of custody document. This analytical report must be reproduced in its entirety.

Tasman Geosciences
 6855 West 119th Avenue
 Broomfield CO 80020

Jake Whritenour
 Project Number: [none]
 Project: Noble - Reistad 01

SS05@2.5'

7/8/2021 2:35:00PM

Analyte	Result	Min Detection Limit	Reporting Limit	Units	Dilution	Batch	Prepared	Analyzed	Notes
---------	--------	---------------------	-----------------	-------	----------	-------	----------	----------	-------

Origins Laboratory, Inc.
Y107178-07 (Soil)

Boron (DTPA Sorbitol)

Boron	0.832		0.198	mg/L	1	B1G0924	07/09/2021	07/12/2021	
-------	-------	--	-------	------	---	---------	------------	------------	--

DRO/ORO by EPA 8015D

Diesel (C10-C28)	ND		50.0	mg/kg	1	B1G0921	07/09/2021	07/09/2021	U
Residual Range Organics (C28-C40)	ND		200	"	"	"	"	"	U

Surrogate: o-Terphenyl	89.1 %		50-150			"	"	"	
------------------------	--------	--	--------	--	--	---	---	---	--

GBTEX+TMBs

1,2,4-Trimethylbenzene	ND		0.00200	mg/kg	1	B1G0920	07/09/2021	07/13/2021	U
1,3,5-Trimethylbenzene	ND		0.00200	"	"	"	"	"	U
Benzene	ND		0.00200	"	"	"	"	"	U
Ethylbenzene	ND		0.00200	"	"	"	"	"	U
Toluene	ND		0.00200	"	"	"	"	"	U
Gasoline Range Hydrocarbons	ND		0.200	"	"	"	"	"	U
Xylenes, total	ND		0.00200	"	"	"	"	"	U

Surrogate: 1,2-Dichloroethane-d4	96.6 %		70-130			"	"	"	
----------------------------------	--------	--	--------	--	--	---	---	---	--

Origins Laboratory, Inc.



Jen Pellegrini, Project Manager

The results in this report apply to the samples analyzed in accordance with the chain of custody document. This analytical report must be reproduced in its entirety.

Tasman Geosciences
 6855 West 119th Avenue
 Broomfield CO 80020

Jake Whritenour
 Project Number: [none]
 Project: Noble - Reistad 01

SS05@2.5'

7/8/2021 2:35:00PM

Analyte	Result	Min Detection Limit	Reporting Limit	Units	Dilution	Batch	Prepared	Analyzed	Notes
---------	--------	---------------------	-----------------	-------	----------	-------	----------	----------	-------

Origins Laboratory, Inc.
Y107178-07 (Soil)

GBTEX+TMBs

Surrogate: Toluene-d8	92.9 %		70-130			B1G09 20	07/09/2021	07/13/2021	
Surrogate: 4-Bromofluorobenzene	100 %		70-130			"	"	"	

Metals by Saturated Paste

Calcium	4.45		0.0499	meq/L	1	[CALC]	07/12/2021	07/13/2021	
Magnesium	1.61		0.0823	"	"	"	"	"	
Sodium	2.90		0.0435	"	"	"	"	"	

PAH by 8270D SIM

1-Methylnaphthalene	ND	0.00048	0.00067	mg/Kg	1	L563221	07/12/2021	07/12/2021	
2-Methylnaphthalene	ND	0.000542	0.00067	"	"	"	"	"	
Acenaphthene	ND	0.000431	0.00067	"	"	"	"	"	
Anthracene	ND	0.000426	0.00067	"	"	"	"	"	
Benzo(a)anthracene	ND	0.000441	0.00067	"	"	"	"	"	
Benzo(a)pyrene	ND	0.000133	0.00067	"	"	"	"	"	
Benzo(b)fluoranthene	ND	0.000138	0.00067	"	"	"	"	"	
Benzo(k)fluoranthene	ND	0.000486	0.00067	"	"	"	"	"	
Chrysene	ND	0.000256	0.00067	"	"	"	"	"	
Dibenz(a,h)anthracene	ND	0.000279	0.00067	"	"	"	"	"	
Fluoranthene	ND	0.000529	0.00067	"	"	"	"	"	

Origins Laboratory, Inc.



Jen Pellegrini, Project Manager

The results in this report apply to the samples analyzed in accordance with the chain of custody document. This analytical report must be reproduced in its entirety.

Tasman Geosciences
 6855 West 119th Avenue
 Broomfield CO 80020

Jake Whritenour
 Project Number: [none]
 Project: Noble - Reistad 01

SS05@2.5'

7/8/2021 2:35:00PM

Analyte	Result	Min Detection Limit	Reporting Limit	Units	Dilution	Batch	Prepared	Analyzed	Notes
---------	--------	---------------------	-----------------	-------	----------	-------	----------	----------	-------

Waypoint Analytical, Inc.
Y107178-07 (Soil)

PAH by 8270D SIM

Fluorene	ND	0.000501	0.00067	mg/Kg	1	L563221	07/12/2021	07/12/2021	
Indeno(1,2,3-cd)pyrene	ND	0.000344	0.00067	"	"	"	"	"	
Naphthalene	ND	0.000467	0.00067	"	"	"	"	"	
Pyrene	ND	0.000387	0.00067	"	"	"	"	"	

Surrogate: 2-Fluorobiphenyl	72 %		33-115			"	"	"	
Surrogate: 4-Terphenyl-d14	72.6 %		33-122			"	"	"	
Surrogate: Nitrobenzene-d5	63.9 %		29-110			"	"	"	

pH in Soil by EPA 9045D

pH	7.78			pH Units	1	B1G1210	07/12/2021	07/13/2021	
----	------	--	--	----------	---	---------	------------	------------	--

SAR by 20B Saturated Paste

SAR	1.67			SAR	1	B1G1216	07/12/2021	07/13/2021	
-----	------	--	--	-----	---	---------	------------	------------	--

Specific Conductance by Modified 9050A

Specific Conductance (EC)	0.935		0.00500	mmhos/cm	1	B1G1213	07/12/2021	07/13/2021	
---------------------------	-------	--	---------	----------	---	---------	------------	------------	--

Origins Laboratory, Inc.



Jen Pellegrini, Project Manager

The results in this report apply to the samples analyzed in accordance with the chain of custody document. This analytical report must be reproduced in its entirety.

Tasman Geosciences
 6855 West 119th Avenue
 Broomfield CO 80020

Jake Whritenour
 Project Number: [none]
 Project: Noble - Reistad 01

FS01@7'
7/8/2021 2:40:00PM

Analyte	Result	Min Detection Limit	Reporting Limit	Units	Dilution	Batch	Prepared	Analyzed	Notes
---------	--------	---------------------	-----------------	-------	----------	-------	----------	----------	-------

Origins Laboratory, Inc.
Y107178-08 (Soil)

Boron (DTPA Sorbitol)

Boron	4.53		0.198	mg/L	1	B1G0924	07/09/2021	07/12/2021	
-------	------	--	-------	------	---	---------	------------	------------	--

DRO/ORO by EPA 8015D

Diesel (C10-C28)	ND		50.0	mg/kg	1	B1G0921	07/09/2021	07/09/2021	U
Residual Range Organics (C28-C40)	ND		200	"	"	"	"	"	U

Surrogate: o-Terphenyl	77.6 %		50-150			"	"	"	
------------------------	--------	--	--------	--	--	---	---	---	--

GBTEX+TMBs

1,2,4-Trimethylbenzene	0.00312		0.00200	mg/kg	1	B1G0920	07/09/2021	07/14/2021	
1,3,5-Trimethylbenzene	ND		0.00200	"	"	"	"	"	U
Benzene	0.145		0.00200	"	"	"	"	"	
Ethylbenzene	0.00806		0.00200	"	"	"	"	"	
Toluene	0.0469		0.00200	"	"	"	"	"	
Gasoline Range Hydrocarbons	0.220		0.200	"	"	"	"	"	
Xylenes, total	0.0154		0.00200	"	"	"	"	"	

Surrogate: 1,2-Dichloroethane-d4	101 %		70-130			"	"	"	
Surrogate: Toluene-d8	99.9 %		70-130			"	"	"	
Surrogate: 4-Bromofluorobenzene	96.1 %		70-130			"	"	"	

Origins Laboratory, Inc.



Jen Pellegrini, Project Manager

The results in this report apply to the samples analyzed in accordance with the chain of custody document. This analytical report must be reproduced in its entirety.

Tasman Geosciences
 6855 West 119th Avenue
 Broomfield CO 80020

Jake Whritenour
 Project Number: [none]
 Project: Noble - Reistad 01

FS01@7'
 7/8/2021 2:40:00PM

Analyte	Result	Min Detection Limit	Reporting Limit	Units	Dilution	Batch	Prepared	Analyzed	Notes
---------	--------	---------------------	-----------------	-------	----------	-------	----------	----------	-------

Origins Laboratory, Inc.
 Y107178-08 (Soil)

Metals by Saturated Paste

Calcium	10.9		0.0499	meq/L	1	[CALC]	07/12/2021	07/13/2021	
Magnesium	2.70		0.0823	"	"	"	"	"	
Sodium	53.6		0.0435	"	"	"	"	"	

PAH by 8270D SIM

1-Methylnaphthalene	ND	0.0024	0.00335	mg/Kg	5	L563221	07/12/2021	07/12/2021	
2-Methylnaphthalene	0.00313	0.00271	0.00335	"	"	"	"	"	J
Acenaphthene	ND	0.00216	0.00335	"	"	"	"	"	
Anthracene	ND	0.00213	0.00335	"	"	"	"	"	
Benzo(a)anthracene	ND	0.00221	0.00335	"	"	"	"	"	
Benzo(a)pyrene	ND	0.000665	0.00335	"	"	"	"	"	
Benzo(b)fluoranthene	ND	0.00069	0.00335	"	"	"	"	"	
Benzo(k)fluoranthene	ND	0.00243	0.00335	"	"	"	"	"	
Chrysene	ND	0.00128	0.00335	"	"	"	"	"	
Dibenz(a,h)anthracene	ND	0.0014	0.00335	"	"	"	"	"	
Fluoranthene	ND	0.00265	0.00335	"	"	"	"	"	
Fluorene	ND	0.00251	0.00335	"	"	"	"	"	
Indeno(1,2,3-cd)pyrene	ND	0.00172	0.00335	"	"	"	"	"	
Naphthalene	ND	0.00234	0.00335	"	"	"	"	"	
Pyrene	ND	0.00194	0.00335	"	"	"	"	"	

Origins Laboratory, Inc.



Jen Pellegrini, Project Manager

The results in this report apply to the samples analyzed in accordance with the chain of custody document. This analytical report must be reproduced in its entirety.

Tasman Geosciences
 6855 West 119th Avenue
 Broomfield CO 80020

Jake Whritenour
 Project Number: [none]
 Project: Noble - Reistad 01

FS01@7'
7/8/2021 2:40:00PM

Analyte	Result	Min Detection Limit	Reporting Limit	Units	Dilution	Batch	Prepared	Analyzed	Notes
---------	--------	---------------------	-----------------	-------	----------	-------	----------	----------	-------

Waypoint Analytical, Inc.
Y107178-08 (Soil)

PAH by 8270D SIM

Surrogate: 2-Fluorobiphenyl	82.9 %		33-115			L5632 21	07/12/2021	07/12/2021	
Surrogate: 4-Terphenyl-d14	99.1 %		33-122			"	"	"	
Surrogate: Nitrobenzene-d5	78.6 %		29-110			"	"	"	

pH in Soil by EPA 9045D

pH	7.12			pH Units	1	B1G1210	07/12/2021	07/13/2021	
----	------	--	--	----------	---	---------	------------	------------	--

SAR by 20B Saturated Paste

SAR	20.5			SAR	1	B1G1216	07/12/2021	07/13/2021	
-----	------	--	--	-----	---	---------	------------	------------	--

Specific Conductance by Modified 9050A

Specific Conductance (EC)	6.42		0.00500	mmhos/cm	1	B1G1213	07/12/2021	07/13/2021	
---------------------------	------	--	---------	----------	---	---------	------------	------------	--

Total Metals by 6020B

Arsenic	4.17	0.0855	0.25	mg/Kg	5	L563220	07/12/2021	07/13/2021	
Barium	31	0.042	0.25	"	"	"	"	"	
Cadmium	0.0812	0.0259	0.25	"	"	"	"	"	J
Copper	11.5	0.0806	0.25	"	"	"	"	"	
Lead	9.13	0.031	0.25	"	"	"	"	"	
Nickel	6.25	0.0633	0.25	"	"	"	"	"	
Selenium	0.317	0.103	0.25	"	"	"	"	"	

Origins Laboratory, Inc.



Jen Pellegrini, Project Manager

The results in this report apply to the samples analyzed in accordance with the chain of custody document. This analytical report must be reproduced in its entirety.

Tasman Geosciences
6855 West 119th Avenue
Broomfield CO 80020

Jake Whritenour
Project Number: [none]
Project: Noble - Reistad 01

FS01@7'
7/8/2021 2:40:00PM

Analyte	Result	Min Detection Limit	Reporting Limit	Units	Dilution	Batch	Prepared	Analyzed	Notes
---------	--------	---------------------	-----------------	-------	----------	-------	----------	----------	-------

Waypoint Analytical, Inc.
Y107178-08 (Soil)

Total Metals by 6020B

Silver	0.0215	0.0067	0.25	mg/Kg	5	L563220	07/12/2021	07/13/2021	J
Zinc	61.9	0.534	2.5	"	"	"	"	"	

Total Metals by 7196A

Chromium, Hexavalent	ND	0.488	1	mg/Kg	2	L563789	07/08/2021	07/15/2021	
----------------------	----	-------	---	-------	---	---------	------------	------------	--

Origins Laboratory, Inc.



Jen Pellegrini, Project Manager

The results in this report apply to the samples analyzed in accordance with the chain of custody document. This analytical report must be reproduced in its entirety.

Tasman Geosciences
 6855 West 119th Avenue
 Broomfield CO 80020

Jake Whritenour
 Project Number: [none]
 Project: Noble - Reistad 01

SS06@6'

7/8/2021 3:00:00PM

Analyte	Result	Min Detection Limit	Reporting Limit	Units	Dilution	Batch	Prepared	Analyzed	Notes
---------	--------	---------------------	-----------------	-------	----------	-------	----------	----------	-------

Origins Laboratory, Inc.
Y107178-09 (Soil)

Boron (DTPA Sorbitol)

Boron	0.218		0.198	mg/L	1	B1G0924	07/09/2021	07/12/2021	
-------	-------	--	-------	------	---	---------	------------	------------	--

DRO/ORO by EPA 8015D

Diesel (C10-C28)	ND		50.0	mg/kg	1	B1G0921	07/09/2021	07/09/2021	U
Residual Range Organics (C28-C40)	ND		200	"	"	"	"	"	U

Surrogate: o-Terphenyl	75.1 %		50-150			"	"	"	
------------------------	--------	--	--------	--	--	---	---	---	--

GBTEX+TMBs

1,2,4-Trimethylbenzene	ND		0.00200	mg/kg	1	B1G0920	07/09/2021	07/13/2021	U
1,3,5-Trimethylbenzene	ND		0.00200	"	"	"	"	"	U
Benzene	ND		0.00200	"	"	"	"	"	U
Ethylbenzene	ND		0.00200	"	"	"	"	"	U
Toluene	ND		0.00200	"	"	"	"	"	U
Gasoline Range Hydrocarbons	ND		0.200	"	"	"	"	"	U
Xylenes, total	ND		0.00200	"	"	"	"	"	U

Surrogate: 1,2-Dichloroethane-d4	104 %		70-130			"	"	"	
----------------------------------	-------	--	--------	--	--	---	---	---	--

Origins Laboratory, Inc.



Jen Pellegrini, Project Manager

The results in this report apply to the samples analyzed in accordance with the chain of custody document. This analytical report must be reproduced in its entirety.

Tasman Geosciences
 6855 West 119th Avenue
 Broomfield CO 80020

Jake Whritenour
 Project Number: [none]
 Project: Noble - Reistad 01

SS06@6'

7/8/2021 3:00:00PM

Analyte	Result	Min Detection Limit	Reporting Limit	Units	Dilution	Batch	Prepared	Analyzed	Notes
---------	--------	---------------------	-----------------	-------	----------	-------	----------	----------	-------

Origins Laboratory, Inc.
Y107178-09 (Soil)

GBTEX+TMBs

Surrogate: Toluene-d8	98.8 %		70-130			B1G09 20	07/09/2021	07/13/2021	
Surrogate: 4-Bromofluorobenzene	96.2 %		70-130			"	"	"	

Metals by Saturated Paste

Calcium	2.13		0.0499	meq/L	1	[CALC]	07/12/2021	07/13/2021	
Magnesium	0.689		0.0823	"	"	"	"	"	
Sodium	0.407		0.0435	"	"	"	"	"	

PAH by 8270D SIM

1-Methylnaphthalene	ND	0.00048	0.00067	mg/Kg	1	L563221	07/12/2021	07/12/2021	
2-Methylnaphthalene	ND	0.000542	0.00067	"	"	"	"	"	
Acenaphthene	ND	0.000431	0.00067	"	"	"	"	"	
Anthracene	ND	0.000426	0.00067	"	"	"	"	"	
Benzo(a)anthracene	ND	0.000441	0.00067	"	"	"	"	"	
Benzo(a)pyrene	ND	0.000133	0.00067	"	"	"	"	"	
Benzo(b)fluoranthene	ND	0.000138	0.00067	"	"	"	"	"	
Benzo(k)fluoranthene	ND	0.000486	0.00067	"	"	"	"	"	
Chrysene	ND	0.000256	0.00067	"	"	"	"	"	
Dibenz(a,h)anthracene	ND	0.000279	0.00067	"	"	"	"	"	
Fluoranthene	ND	0.000529	0.00067	"	"	"	"	"	

Origins Laboratory, Inc.



Jen Pellegrini, Project Manager

The results in this report apply to the samples analyzed in accordance with the chain of custody document. This analytical report must be reproduced in its entirety.

Tasman Geosciences
 6855 West 119th Avenue
 Broomfield CO 80020

Jake Whritenour
 Project Number: [none]
 Project: Noble - Reistad 01

SS06@6'

7/8/2021 3:00:00PM

Analyte	Result	Min Detection Limit	Reporting Limit	Units	Dilution	Batch	Prepared	Analyzed	Notes
---------	--------	---------------------	-----------------	-------	----------	-------	----------	----------	-------

Waypoint Analytical, Inc.
Y107178-09 (Soil)

PAH by 8270D SIM

Fluorene	ND	0.000501	0.00067	mg/Kg	1	L563221	07/12/2021	07/12/2021	
Indeno(1,2,3-cd)pyrene	ND	0.000344	0.00067	"	"	"	"	"	
Naphthalene	ND	0.000467	0.00067	"	"	"	"	"	
Pyrene	ND	0.000387	0.00067	"	"	"	"	"	

Surrogate: 2-Fluorobiphenyl	77.7 %		33-115			"	"	"	
Surrogate: 4-Terphenyl-d14	91.2 %		33-122			"	"	"	
Surrogate: Nitrobenzene-d5	71 %		29-110			"	"	"	

pH in Soil by EPA 9045D

pH	8.05			pH Units	1	B1G1210	07/12/2021	07/13/2021	
----	------	--	--	----------	---	---------	------------	------------	--

SAR by 20B Saturated Paste

SAR	0.343			SAR	1	B1G1216	07/12/2021	07/13/2021	
-----	-------	--	--	-----	---	---------	------------	------------	--

Specific Conductance by Modified 9050A

Specific Conductance (EC)	0.402	0.00500		mmhos/cm	1	B1G1213	07/12/2021	07/13/2021	
---------------------------	-------	---------	--	----------	---	---------	------------	------------	--

Origins Laboratory, Inc.



Jen Pellegrini, Project Manager

The results in this report apply to the samples analyzed in accordance with the chain of custody document. This analytical report must be reproduced in its entirety.

Tasman Geosciences
 6855 West 119th Avenue
 Broomfield CO 80020

Jake Whritenour
 Project Number: [none]
 Project: Noble - Reistad 01

SS07@6'

7/8/2021 3:05:00PM

Analyte	Result	Min Detection Limit	Reporting Limit	Units	Dilution	Batch	Prepared	Analyzed	Notes
---------	--------	---------------------	-----------------	-------	----------	-------	----------	----------	-------

Origins Laboratory, Inc.
Y107178-10 (Soil)

Boron (DTPA Sorbitol)

Boron	3.42		0.201	mg/L	1	B1G0924	07/09/2021	07/12/2021	
-------	------	--	-------	------	---	---------	------------	------------	--

DRO/ORO by EPA 8015D

Diesel (C10-C28)	ND		50.0	mg/kg	1	B1G0921	07/09/2021	07/10/2021	U
Residual Range Organics (C28-C40)	ND		200	"	"	"	"	"	U

Surrogate: o-Terphenyl	75.1 %		50-150			"	"	"	
------------------------	--------	--	--------	--	--	---	---	---	--

GBTEX+TMBs

1,2,4-Trimethylbenzene	ND		0.00200	mg/kg	1	B1G0920	07/09/2021	07/13/2021	U
1,3,5-Trimethylbenzene	ND		0.00200	"	"	"	"	"	U
Benzene	ND		0.00200	"	"	"	"	"	U
Ethylbenzene	ND		0.00200	"	"	"	"	"	U
Toluene	ND		0.00200	"	"	"	"	"	U
Gasoline Range Hydrocarbons	ND		0.200	"	"	"	"	"	U
Xylenes, total	ND		0.00200	"	"	"	"	"	U

Surrogate: 1,2-Dichloroethane-d4	105 %		70-130			"	"	"	
----------------------------------	-------	--	--------	--	--	---	---	---	--

Origins Laboratory, Inc.



Jen Pellegrini, Project Manager

The results in this report apply to the samples analyzed in accordance with the chain of custody document. This analytical report must be reproduced in its entirety.

Tasman Geosciences
 6855 West 119th Avenue
 Broomfield CO 80020

Jake Whritenour
 Project Number: [none]
 Project: Noble - Reistad 01

SS07@6'

7/8/2021 3:05:00PM

Analyte	Result	Min Detection Limit	Reporting Limit	Units	Dilution	Batch	Prepared	Analyzed	Notes
---------	--------	---------------------	-----------------	-------	----------	-------	----------	----------	-------

Origins Laboratory, Inc.
Y107178-10 (Soil)

GBTEX+TMBs

Surrogate: Toluene-d8	98.1 %		70-130			B1G09 20	07/09/2021	07/13/2021	
Surrogate: 4-Bromofluorobenzene	96.4 %		70-130			"	"	"	

Metals by Saturated Paste

Calcium	5.76		0.0499	meq/L	1	[CALC]	07/12/2021	07/13/2021	
Magnesium	3.99		0.0823	"	"	"	"	"	
Sodium	45.2		0.0435	"	"	"	"	"	

PAH by 8270D SIM

1-Methylnaphthalene	ND	0.00048	0.00067	mg/Kg	1	L563221	07/12/2021	07/12/2021	
2-Methylnaphthalene	ND	0.000542	0.00067	"	"	"	"	"	
Acenaphthene	ND	0.000431	0.00067	"	"	"	"	"	
Anthracene	ND	0.000426	0.00067	"	"	"	"	"	
Benzo(a)anthracene	ND	0.000441	0.00067	"	"	"	"	"	
Benzo(a)pyrene	ND	0.000133	0.00067	"	"	"	"	"	
Benzo(b)fluoranthene	ND	0.000138	0.00067	"	"	"	"	"	
Benzo(k)fluoranthene	ND	0.000486	0.00067	"	"	"	"	"	
Chrysene	ND	0.000256	0.00067	"	"	"	"	"	
Dibenz(a,h)anthracene	ND	0.000279	0.00067	"	"	"	"	"	
Fluoranthene	ND	0.000529	0.00067	"	"	"	"	"	

Origins Laboratory, Inc.



Jen Pellegrini, Project Manager

The results in this report apply to the samples analyzed in accordance with the chain of custody document. This analytical report must be reproduced in its entirety.

Tasman Geosciences
 6855 West 119th Avenue
 Broomfield CO 80020

Jake Whritenour
 Project Number: [none]
 Project: Noble - Reistad 01

SS07@6'
7/8/2021 3:05:00PM

Analyte	Result	Min Detection Limit	Reporting Limit	Units	Dilution	Batch	Prepared	Analyzed	Notes
---------	--------	---------------------	-----------------	-------	----------	-------	----------	----------	-------

Waypoint Analytical, Inc.
Y107178-10 (Soil)

PAH by 8270D SIM

Fluorene	ND	0.000501	0.00067	mg/Kg	1	L563221	07/12/2021	07/12/2021	
Indeno(1,2,3-cd)pyrene	ND	0.000344	0.00067	"	"	"	"	"	
Naphthalene	ND	0.000467	0.00067	"	"	"	"	"	
Pyrene	ND	0.000387	0.00067	"	"	"	"	"	

Surrogate: 2-Fluorobiphenyl	62.3 %		33-115			"	"	"	
Surrogate: 4-Terphenyl-d14	71.7 %		33-122			"	"	"	
Surrogate: Nitrobenzene-d5	56.2 %		29-110			"	"	"	

pH in Soil by EPA 9045D

pH	7.80			pH Units	1	B1G1210	07/12/2021	07/13/2021	
----	------	--	--	----------	---	---------	------------	------------	--

SAR by 20B Saturated Paste

SAR	20.5			SAR	1	B1G1216	07/12/2021	07/13/2021	
-----	------	--	--	-----	---	---------	------------	------------	--

Specific Conductance by Modified 9050A

Specific Conductance (EC)	6.03		0.00500	mmhos/cm	1	B1G1213	07/12/2021	07/13/2021	
---------------------------	------	--	---------	----------	---	---------	------------	------------	--

Origins Laboratory, Inc.



Jen Pellegrini, Project Manager

The results in this report apply to the samples analyzed in accordance with the chain of custody document. This analytical report must be reproduced in its entirety.

Tasman Geosciences
 6855 West 119th Avenue
 Broomfield CO 80020

Jake Whritenour
 Project Number: [none]
 Project: Noble - Reistad 01

SS08@6'

7/8/2021 3:10:00PM

Analyte	Result	Min Detection Limit	Reporting Limit	Units	Dilution	Batch	Prepared	Analyzed	Notes
---------	--------	---------------------	-----------------	-------	----------	-------	----------	----------	-------

Origins Laboratory, Inc.
Y107178-11 (Soil)

Boron (DTPA Sorbitol)

Boron	0.477		0.199	mg/L	1	B1G0924	07/09/2021	07/12/2021	
-------	-------	--	-------	------	---	---------	------------	------------	--

DRO/ORO by EPA 8015D

Diesel (C10-C28)	ND		50.0	mg/kg	1	B1G0922	07/09/2021	07/10/2021	U
Residual Range Organics (C28-C40)	ND		200	"	"	"	"	"	U

Surrogate: o-Terphenyl	76.3 %		50-150			"	"	"	
------------------------	--------	--	--------	--	--	---	---	---	--

GBTEX+TMBs

1,2,4-Trimethylbenzene	ND		0.00200	mg/kg	1	B1G0920	07/09/2021	07/13/2021	U
1,3,5-Trimethylbenzene	ND		0.00200	"	"	"	"	"	U
Benzene	ND		0.00200	"	"	"	"	"	U
Ethylbenzene	ND		0.00200	"	"	"	"	"	U
Toluene	ND		0.00200	"	"	"	"	"	U
Gasoline Range Hydrocarbons	ND		0.200	"	"	"	"	"	U
Xylenes, total	ND		0.00200	"	"	"	"	"	U

Surrogate: 1,2-Dichloroethane-d4	106 %		70-130			"	"	"	
----------------------------------	-------	--	--------	--	--	---	---	---	--

Origins Laboratory, Inc.



Jen Pellegrini, Project Manager

The results in this report apply to the samples analyzed in accordance with the chain of custody document. This analytical report must be reproduced in its entirety.

Tasman Geosciences
 6855 West 119th Avenue
 Broomfield CO 80020

Jake Whritenour
 Project Number: [none]
 Project: Noble - Reistad 01

SS08@6'

7/8/2021 3:10:00PM

Analyte	Result	Min Detection Limit	Reporting Limit	Units	Dilution	Batch	Prepared	Analyzed	Notes
---------	--------	---------------------	-----------------	-------	----------	-------	----------	----------	-------

Origins Laboratory, Inc.
Y107178-11 (Soil)

GBTEX+TMBs

Surrogate: Toluene-d8	97.5 %		70-130			B1G09 20	07/09/2021	07/13/2021	
Surrogate: 4-Bromofluorobenzene	95.6 %		70-130			"	"	"	

Metals by Saturated Paste

Calcium	3.17		0.0499	meq/L	1	[CALC]	07/12/2021	07/13/2021	
Magnesium	1.05		0.0823	"	"	"	"	"	
Sodium	2.32		0.0435	"	"	"	"	"	

PAH by 8270D SIM

1-Methylnaphthalene	ND	0.00048	0.00067	mg/Kg	1	L563221	07/12/2021	07/12/2021	
2-Methylnaphthalene	ND	0.000542	0.00067	"	"	"	"	"	
Acenaphthene	ND	0.000431	0.00067	"	"	"	"	"	
Anthracene	ND	0.000426	0.00067	"	"	"	"	"	
Benzo(a)anthracene	ND	0.000441	0.00067	"	"	"	"	"	
Benzo(a)pyrene	ND	0.000133	0.00067	"	"	"	"	"	
Benzo(b)fluoranthene	0.000382	0.000138	0.00067	"	"	"	"	"	J
Benzo(k)fluoranthene	ND	0.000486	0.00067	"	"	"	"	"	
Chrysene	ND	0.000256	0.00067	"	"	"	"	"	
Dibenz(a,h)anthracene	ND	0.000279	0.00067	"	"	"	"	"	
Fluoranthene	ND	0.000529	0.00067	"	"	"	"	"	

Origins Laboratory, Inc.



Jen Pellegrini, Project Manager

The results in this report apply to the samples analyzed in accordance with the chain of custody document. This analytical report must be reproduced in its entirety.

Tasman Geosciences
 6855 West 119th Avenue
 Broomfield CO 80020

Jake Whritenour
 Project Number: [none]
 Project: Noble - Reistad 01

SS08@6'

7/8/2021 3:10:00PM

Analyte	Result	Min Detection Limit	Reporting Limit	Units	Dilution	Batch	Prepared	Analyzed	Notes
---------	--------	---------------------	-----------------	-------	----------	-------	----------	----------	-------

Waypoint Analytical, Inc.
Y107178-11 (Soil)

PAH by 8270D SIM

Fluorene	ND	0.000501	0.00067	mg/Kg	1	L563221	07/12/2021	07/12/2021	
Indeno(1,2,3-cd)pyrene	ND	0.000344	0.00067	"	"	"	"	"	
Naphthalene	ND	0.000467	0.00067	"	"	"	"	"	
Pyrene	ND	0.000387	0.00067	"	"	"	"	"	

Surrogate: 2-Fluorobiphenyl	70.3 %		33-115			"	"	"	
Surrogate: 4-Terphenyl-d14	78.1 %		33-122			"	"	"	
Surrogate: Nitrobenzene-d5	62.8 %		29-110			"	"	"	

pH in Soil by EPA 9045D

pH	7.98			pH Units	1	B1G1210	07/12/2021	07/13/2021	
----	------	--	--	----------	---	---------	------------	------------	--

SAR by 20B Saturated Paste

SAR	1.60			SAR	1	B1G1216	07/12/2021	07/13/2021	
-----	------	--	--	-----	---	---------	------------	------------	--

Specific Conductance by Modified 9050A

Specific Conductance (EC)	0.766		0.00500	mmhos/cm	1	B1G1213	07/12/2021	07/13/2021	
---------------------------	-------	--	---------	----------	---	---------	------------	------------	--

Origins Laboratory, Inc.



Jen Pellegrini, Project Manager

The results in this report apply to the samples analyzed in accordance with the chain of custody document. This analytical report must be reproduced in its entirety.

Tasman Geosciences
 6855 West 119th Avenue
 Broomfield CO 80020

Jake Whritenour
 Project Number: [none]
 Project: Noble - Reistad 01

SS09@6'

7/8/2021 3:15:00PM

Analyte	Result	Min Detection Limit	Reporting Limit	Units	Dilution	Batch	Prepared	Analyzed	Notes
---------	--------	---------------------	-----------------	-------	----------	-------	----------	----------	-------

Origins Laboratory, Inc.
Y107178-12 (Soil)

Boron (DTPA Sorbitol)

Boron	0.281		0.201	mg/L	1	B1G0924	07/09/2021	07/12/2021	
-------	-------	--	-------	------	---	---------	------------	------------	--

DRO/ORO by EPA 8015D

Diesel (C10-C28)	ND		50.0	mg/kg	1	B1G0922	07/09/2021	07/10/2021	U
Residual Range Organics (C28-C40)	ND		200	"	"	"	"	"	U

Surrogate: o-Terphenyl	79.6 %		50-150			"	"	"	
------------------------	--------	--	--------	--	--	---	---	---	--

GBTEX+TMBs

1,2,4-Trimethylbenzene	ND		0.00200	mg/kg	1	B1G0920	07/09/2021	07/13/2021	U
1,3,5-Trimethylbenzene	ND		0.00200	"	"	"	"	"	U
Benzene	ND		0.00200	"	"	"	"	"	U
Ethylbenzene	ND		0.00200	"	"	"	"	"	U
Toluene	ND		0.00200	"	"	"	"	"	U
Gasoline Range Hydrocarbons	ND		0.200	"	"	"	"	"	U
Xylenes, total	ND		0.00200	"	"	"	"	"	U

Surrogate: 1,2-Dichloroethane-d4	105 %		70-130			"	"	"	
----------------------------------	-------	--	--------	--	--	---	---	---	--

Origins Laboratory, Inc.



Jen Pellegrini, Project Manager

The results in this report apply to the samples analyzed in accordance with the chain of custody document. This analytical report must be reproduced in its entirety.

Tasman Geosciences
 6855 West 119th Avenue
 Broomfield CO 80020

Jake Whritenour
 Project Number: [none]
 Project: Noble - Reistad 01

SS09@6'

7/8/2021 3:15:00PM

Analyte	Result	Min Detection Limit	Reporting Limit	Units	Dilution	Batch	Prepared	Analyzed	Notes
---------	--------	---------------------	-----------------	-------	----------	-------	----------	----------	-------

Origins Laboratory, Inc.
Y107178-12 (Soil)

GBTEX+TMBs

Surrogate: Toluene-d8	98.9 %		70-130			B1G09 20	07/09/2021	07/13/2021	
Surrogate: 4-Bromofluorobenzene	96.0 %		70-130			"	"	"	

Metals by Saturated Paste

Calcium	1.16		0.0499	meq/L	1	[CALC]	07/12/2021	07/13/2021	
Magnesium	1.34		0.0823	"	"	"	"	"	
Sodium	0.191		0.0435	"	"	"	"	"	

PAH by 8270D SIM

1-Methylnaphthalene	ND	0.00048	0.00067	mg/Kg	1	L563221	07/12/2021	07/12/2021	
2-Methylnaphthalene	ND	0.000542	0.00067	"	"	"	"	"	
Acenaphthene	ND	0.000431	0.00067	"	"	"	"	"	
Anthracene	ND	0.000426	0.00067	"	"	"	"	"	
Benzo(a)anthracene	ND	0.000441	0.00067	"	"	"	"	"	
Benzo(a)pyrene	ND	0.000133	0.00067	"	"	"	"	"	
Benzo(b)fluoranthene	ND	0.000138	0.00067	"	"	"	"	"	
Benzo(k)fluoranthene	ND	0.000486	0.00067	"	"	"	"	"	
Chrysene	ND	0.000256	0.00067	"	"	"	"	"	
Dibenz(a,h)anthracene	ND	0.000279	0.00067	"	"	"	"	"	
Fluoranthene	ND	0.000529	0.00067	"	"	"	"	"	

Origins Laboratory, Inc.



Jen Pellegrini, Project Manager

The results in this report apply to the samples analyzed in accordance with the chain of custody document. This analytical report must be reproduced in its entirety.

Tasman Geosciences
 6855 West 119th Avenue
 Broomfield CO 80020

Jake Whritenour
 Project Number: [none]
 Project: Noble - Reistad 01

SS09@6'

7/8/2021 3:15:00PM

Analyte	Result	Min Detection Limit	Reporting Limit	Units	Dilution	Batch	Prepared	Analyzed	Notes
---------	--------	---------------------	-----------------	-------	----------	-------	----------	----------	-------

Waypoint Analytical, Inc.
Y107178-12 (Soil)

PAH by 8270D SIM

Fluorene	ND	0.000501	0.00067	mg/Kg	1	L563221	07/12/2021	07/12/2021	
Indeno(1,2,3-cd)pyrene	ND	0.000344	0.00067	"	"	"	"	"	
Naphthalene	ND	0.000467	0.00067	"	"	"	"	"	
Pyrene	ND	0.000387	0.00067	"	"	"	"	"	

Surrogate: 2-Fluorobiphenyl	68.3 %		33-115			"	"	"	
Surrogate: 4-Terphenyl-d14	83.4 %		33-122			"	"	"	
Surrogate: Nitrobenzene-d5	64 %		29-110			"	"	"	

pH in Soil by EPA 9045D

pH	8.24			pH Units	1	B1G1210	07/12/2021	07/13/2021	
----	------	--	--	----------	---	---------	------------	------------	--

SAR by 20B Saturated Paste

SAR	0.171			SAR	1	B1G1216	07/12/2021	07/13/2021	
-----	-------	--	--	-----	---	---------	------------	------------	--

Specific Conductance by Modified 9050A

Specific Conductance (EC)	0.381		0.00500	mmhos/cm	1	B1G1213	07/12/2021	07/13/2021	
---------------------------	-------	--	---------	----------	---	---------	------------	------------	--

Origins Laboratory, Inc.



Jen Pellegrini, Project Manager

The results in this report apply to the samples analyzed in accordance with the chain of custody document. This analytical report must be reproduced in its entirety.

Tasman Geosciences
 6855 West 119th Avenue
 Broomfield CO 80020

Jake Whritenour
 Project Number: [none]
 Project: Noble - Reistad 01

Volatile Organic Compounds by GC/MS SW846 8260D - Quality Control
Origins Laboratory, Inc.

Analyte	Result	Reporting Limit	Units	Spike Level	Source Result	%REC	%REC Limits	RPD	RPD Limit	Notes
---------	--------	-----------------	-------	-------------	---------------	------	-------------	-----	-----------	-------

Batch B1G0920 - EPA 5030 (soil)

Blank (B1G0920-BLK1)

Prepared: 07/09/2021 Analyzed: 07/09/2021

1,2,4-Trimethylbenzene	ND	0.00200	mg/kg							U
Naphthalene	ND	0.0100	"							U
1,3,5-Trimethylbenzene	ND	0.00200	"							U
Benzene	ND	0.00200	"							U
Ethylbenzene	ND	0.00200	"							U
Toluene	ND	0.00200	"							U
Xylenes, total	ND	0.00200	"							U
Gasoline Range Hydrocarbons	ND	0.200	"							U
Surrogate: 1,2-Dichloroethane-d4	0.12		"	0.125		95.0	70-130			
Surrogate: Toluene-d8	0.12		"	0.125		96.5	70-130			
Surrogate: 4-Bromofluorobenzene	0.13		"	0.125		102	70-130			

Origins Laboratory, Inc.



Jen Pellegrini, Project Manager

The results in this report apply to the samples analyzed in accordance with the chain of custody document. This analytical report must be reproduced in its entirety.

Tasman Geosciences
 6855 West 119th Avenue
 Broomfield CO 80020

Jake Whritenour
 Project Number: [none]
 Project: Noble - Reistad 01

Volatile Organic Compounds by GC/MS SW846 8260D - Quality Control
Origins Laboratory, Inc.

Analyte	Result	Reporting Limit	Units	Spike Level	Source Result	%REC	%REC Limits	RPD	RPD Limit	Notes
---------	--------	-----------------	-------	-------------	---------------	------	-------------	-----	-----------	-------

Batch B1G0920 - EPA 5030 (soil)

LCS (B1G0920-BS1)

Prepared: 07/09/2021 Analyzed: 07/09/2021

1,2,4-Trimethylbenzene	0.0582	0.00200	mg/kg	0.0500		116	70-130			
Naphthalene	0.0560	0.0100	"	0.0500		112	70-130			
1,3,5-Trimethylbenzene	0.0560	0.00200	"	0.0500		112	70-130			
Benzene	0.0532	0.00200	"	0.0500		106	70-130			
Ethylbenzene	0.0573	0.00200	"	0.0500		115	70-130			
m,p-Xylene	0.117	0.00400	"	0.100		117	70-130			
o-Xylene	0.0571	0.00200	"	0.0500		114	70-130			
Toluene	0.0578	0.00200	"	0.0500		116	70-130			
Surrogate: 1,2-Dichloroethane-d4	0.11		"	0.125		91.3	70-130			
Surrogate: Toluene-d8	0.12		"	0.125		97.6	70-130			
Surrogate: 4-Bromofluorobenzene	0.12		"	0.125		99.5	70-130			

Origins Laboratory, Inc.



Jen Pellegrini, Project Manager

The results in this report apply to the samples analyzed in accordance with the chain of custody document. This analytical report must be reproduced in its entirety.

Tasman Geosciences
 6855 West 119th Avenue
 Broomfield CO 80020

Jake Whritenour
 Project Number: [none]
 Project: Noble - Reistad 01

Volatile Organic Compounds by GC/MS SW846 8260D - Quality Control
Origins Laboratory, Inc.

Analyte	Result	Reporting Limit	Units	Spike Level	Source Result	%REC	%REC Limits	RPD	RPD Limit	Notes
---------	--------	-----------------	-------	-------------	---------------	------	-------------	-----	-----------	-------

Batch B1G0920 - EPA 5030 (soil)

Matrix Spike (B1G0920-MS1)	Source: Y107178-01			Prepared: 07/09/2021 Analyzed: 07/09/2021						
1,2,4-Trimethylbenzene	0.0403	0.00200	mg/kg	0.0500	ND	80.6	70-130			
Naphthalene	0.0418	0.0100	"	0.0500	ND	83.7	70-130			
1,3,5-Trimethylbenzene	0.0393	0.00200	"	0.0500	ND	78.6	70-130			
Benzene	0.0362	0.00200	"	0.0500	ND	72.5	70-130			
Ethylbenzene	0.0398	0.00200	"	0.0500	ND	79.5	70-130			
m,p-Xylene	0.0806	0.00400	"	0.100	ND	80.6	70-130			
o-Xylene	0.0399	0.00200	"	0.0500	ND	79.9	70-130			
Toluene	0.0372	0.00200	"	0.0500	ND	74.3	70-130			
Surrogate: 1,2-Dichloroethane-d4	0.12		"	0.125		92.6	70-130			
Surrogate: Toluene-d8	0.12		"	0.125		97.6	70-130			
Surrogate: 4-Bromofluorobenzene	0.13		"	0.125		101	70-130			

Origins Laboratory, Inc.



Jen Pellegrini, Project Manager

The results in this report apply to the samples analyzed in accordance with the chain of custody document. This analytical report must be reproduced in its entirety.

Tasman Geosciences
 6855 West 119th Avenue
 Broomfield CO 80020

Jake Whritenour
 Project Number: [none]
 Project: Noble - Reistad 01

Volatile Organic Compounds by GC/MS SW846 8260D - Quality Control
Origins Laboratory, Inc.

Analyte	Result	Reporting Limit	Units	Spike Level	Source Result	%REC	%REC Limits	RPD	RPD Limit	Notes
---------	--------	-----------------	-------	-------------	---------------	------	-------------	-----	-----------	-------

Batch B1G0920 - EPA 5030 (soil)

Matrix Spike Dup (B1G0920-MSD1)	Source: Y107178-01			Prepared: 07/09/2021 Analyzed: 07/09/2021						
1,2,4-Trimethylbenzene	0.0543	0.00200	mg/kg	0.0500	ND	109	70-130	29.6	20	QR-03
Naphthalene	0.0524	0.0100	"	0.0500	ND	105	70-130	22.4	20	QR-03
1,3,5-Trimethylbenzene	0.0535	0.00200	"	0.0500	ND	107	70-130	30.7	20	QR-03
Benzene	0.0510	0.00200	"	0.0500	ND	102	70-130	33.9	20	QR-03
Ethylbenzene	0.0545	0.00200	"	0.0500	ND	109	70-130	31.3	20	QR-03
m,p-Xylene	0.110	0.00400	"	0.100	ND	110	70-130	30.7	20	QR-03
o-Xylene	0.0537	0.00200	"	0.0500	ND	107	70-130	29.4	20	QR-03
Toluene	0.0511	0.00200	"	0.0500	ND	102	70-130	31.6	20	QR-03
Surrogate: 1,2-Dichloroethane-d4	0.11		"	0.125		91.3	70-130			
Surrogate: Toluene-d8	0.12		"	0.125		97.9	70-130			
Surrogate: 4-Bromofluorobenzene	0.13		"	0.125		100	70-130			

Origins Laboratory, Inc.



Jen Pellegrini, Project Manager

The results in this report apply to the samples analyzed in accordance with the chain of custody document. This analytical report must be reproduced in its entirety.

Tasman Geosciences
 6855 West 119th Avenue
 Broomfield CO 80020

Jake Whritenour
 Project Number: [none]
 Project: Noble - Reistad 01

Volatile Organic Compounds by GC/MS SW846 8260D - Quality Control
Origins Laboratory, Inc.

Analyte	Result	Reporting Limit	Units	Spike Level	Source Result	%REC	%REC Limits	RPD	RPD Limit	Notes
Batch B1G0921 - EPA 3550B										
Blank (B1G0921-BLK1)										
					Prepared: 07/09/2021 Analyzed: 07/10/2021					
Diesel (C10-C28)	ND	50.0	mg/kg							U
Residual Range Organics (C28-C40)	ND	200	"							U
Surrogate: o-Terphenyl	54		"	50.0		107	50-150			

Origins Laboratory, Inc.



Jen Pellegrini, Project Manager

The results in this report apply to the samples analyzed in accordance with the chain of custody document. This analytical report must be reproduced in its entirety.

Tasman Geosciences
 6855 West 119th Avenue
 Broomfield CO 80020

Jake Whritenour
 Project Number: [none]
 Project: Noble - Reistad 01

Extractable Petroleum Hydrocarbons by 8015D - Quality Control
Origins Laboratory, Inc.

Analyte	Result	Reporting Limit	Units	Spike Level	Source Result	%REC	%REC Limits	RPD	RPD Limit	Notes
---------	--------	-----------------	-------	-------------	---------------	------	-------------	-----	-----------	-------

Batch B1G0921 - EPA 3550B

LCS (B1G0921-BS1)

Prepared: 07/09/2021 Analyzed: 07/10/2021

Diesel (C10-C28)	932	50.0	mg/kg	1000		93.2	70-130			
Residual Range Organics (C28-C40)	990	200	"	1000		99.0	70-130			
Surrogate: o-Terphenyl	51		"	50.0		102	50-150			

Origins Laboratory, Inc.



Jen Pellegrini, Project Manager

The results in this report apply to the samples analyzed in accordance with the chain of custody document. This analytical report must be reproduced in its entirety.

Tasman Geosciences
 6855 West 119th Avenue
 Broomfield CO 80020

Jake Whritenour
 Project Number: [none]
 Project: Noble - Reistad 01

Extractable Petroleum Hydrocarbons by 8015D - Quality Control
Origins Laboratory, Inc.

Analyte	Result	Reporting Limit	Units	Spike Level	Source Result	%REC	%REC Limits	RPD	RPD Limit	Notes
---------	--------	-----------------	-------	-------------	---------------	------	-------------	-----	-----------	-------

Batch B1G0921 - EPA 3550B

Matrix Spike (B1G0921-MS1)	Source: Y107178-01			Prepared: 07/09/2021 Analyzed: 07/10/2021						
Diesel (C10-C28)	823	50.0	mg/kg	1000	ND	82.3	70-130			
Residual Range Organics (C28-C40)	868	200	"	1000	ND	86.8	70-130			
Surrogate: o-Terphenyl	44		"	50.0		88.7	50-150			

Origins Laboratory, Inc.



Jen Pellegrini, Project Manager

The results in this report apply to the samples analyzed in accordance with the chain of custody document. This analytical report must be reproduced in its entirety.

Tasman Geosciences
 6855 West 119th Avenue
 Broomfield CO 80020

Jake Whritenour
 Project Number: [none]
 Project: Noble - Reistad 01

Extractable Petroleum Hydrocarbons by 8015D - Quality Control
Origins Laboratory, Inc.

Analyte	Result	Reporting Limit	Units	Spike Level	Source Result	%REC	%REC Limits	RPD	RPD Limit	Notes
---------	--------	-----------------	-------	-------------	---------------	------	-------------	-----	-----------	-------

Batch B1G0921 - EPA 3550B

Matrix Spike Dup (B1G0921-MSD1)	Source: Y107178-01			Prepared: 07/09/2021 Analyzed: 07/10/2021						
Diesel (C10-C28)	1020	50.0	mg/kg	1000	ND	102	70-130	21.4	35	
Residual Range Organics (C28-C40)	1110	200	"	1000	ND	111	70-130	24.2	35	
<i>Surrogate: o-Terphenyl</i>	55		"	50.0		111	50-150			

Origins Laboratory, Inc.



Jen Pellegrini, Project Manager

The results in this report apply to the samples analyzed in accordance with the chain of custody document. This analytical report must be reproduced in its entirety.

Tasman Geosciences
 6855 West 119th Avenue
 Broomfield CO 80020

Jake Whritenour
 Project Number: [none]
 Project: Noble - Reistad 01

Extractable Petroleum Hydrocarbons by 8015D - Quality Control
Origins Laboratory, Inc.

Analyte	Result	Reporting Limit	Units	Spike Level	Source Result	%REC	%REC Limits	RPD	RPD Limit	Notes
Batch B1G0922 - EPA 3550B										
Blank (B1G0922-BLK1)										
					Prepared: 07/09/2021 Analyzed: 07/09/2021					
Diesel (C10-C28)	ND	50.0	mg/kg							U
Residual Range Organics (C28-C40)	ND	200	"							U
Surrogate: o-Terphenyl	37		"	50.0		73.4	50-150			

Origins Laboratory, Inc.



Jen Pellegrini, Project Manager

The results in this report apply to the samples analyzed in accordance with the chain of custody document. This analytical report must be reproduced in its entirety.

Tasman Geosciences
 6855 West 119th Avenue
 Broomfield CO 80020

Jake Whritenour
 Project Number: [none]
 Project: Noble - Reistad 01

Extractable Petroleum Hydrocarbons by 8015D - Quality Control
Origins Laboratory, Inc.

Analyte	Result	Reporting Limit	Units	Spike Level	Source Result	%REC	%REC Limits	RPD	RPD Limit	Notes
---------	--------	-----------------	-------	-------------	---------------	------	-------------	-----	-----------	-------

Batch B1G0922 - EPA 3550B

LCS (B1G0922-BS1)

Prepared: 07/09/2021 Analyzed: 07/09/2021

Diesel (C10-C28)	915	50.0	mg/kg	1000		91.5	70-130			
Residual Range Organics (C28-C40)	1080	200	"	1000		108	70-130			
Surrogate: o-Terphenyl	53		"	50.0		107	50-150			

Origins Laboratory, Inc.



Jen Pellegrini, Project Manager

The results in this report apply to the samples analyzed in accordance with the chain of custody document. This analytical report must be reproduced in its entirety.

Tasman Geosciences
 6855 West 119th Avenue
 Broomfield CO 80020

Jake Whritenour
 Project Number: [none]
 Project: Noble - Reistad 01

Extractable Petroleum Hydrocarbons by 8015D - Quality Control
Origins Laboratory, Inc.

Analyte	Result	Reporting Limit	Units	Spike Level	Source Result	%REC	%REC Limits	RPD	RPD Limit	Notes
---------	--------	-----------------	-------	-------------	---------------	------	-------------	-----	-----------	-------

Batch B1G0922 - EPA 3550B

Matrix Spike (B1G0922-MS1)	Source: Y107178-11			Prepared: 07/09/2021 Analyzed: 07/09/2021						
Diesel (C10-C28)	919	50.0	mg/kg	1000	ND	91.9	70-130			
Residual Range Organics (C28-C40)	1030	200	"	1000	ND	103	70-130			
<i>Surrogate: o-Terphenyl</i>	<i>51</i>		<i>"</i>	<i>50.0</i>		<i>103</i>	<i>50-150</i>			

Origins Laboratory, Inc.



Jen Pellegrini, Project Manager

The results in this report apply to the samples analyzed in accordance with the chain of custody document. This analytical report must be reproduced in its entirety.

Tasman Geosciences
 6855 West 119th Avenue
 Broomfield CO 80020

Jake Whritenour
 Project Number: [none]
 Project: Noble - Reistad 01

Extractable Petroleum Hydrocarbons by 8015D - Quality Control
Origins Laboratory, Inc.

Analyte	Result	Reporting Limit	Units	Spike Level	Source Result	%REC	%REC Limits	RPD	RPD Limit	Notes
Batch B1G0922 - EPA 3550B										
Matrix Spike Dup (B1G0922-MSD1)		Source: Y107178-11			Prepared: 07/09/2021 Analyzed: 07/09/2021					
Diesel (C10-C28)	905	50.0	mg/kg	1000	ND	90.5	70-130	1.52	35	
Residual Range Organics (C28-C40)	964	200	"	1000	ND	96.4	70-130	6.25	35	
<i>Surrogate: o-Terphenyl</i>	<i>51</i>		<i>"</i>	<i>50.0</i>		<i>102</i>	<i>50-150</i>			

Origins Laboratory, Inc.



Jen Pellegrini, Project Manager

The results in this report apply to the samples analyzed in accordance with the chain of custody document. This analytical report must be reproduced in its entirety.

Tasman Geosciences
 6855 West 119th Avenue
 Broomfield CO 80020

Jake Whritenour
 Project Number: [none]
 Project: Noble - Reistad 01

Extractable Petroleum Hydrocarbons by 8015D - Quality Control
Origins Laboratory, Inc.

Analyte	Result	Reporting Limit	Units	Spike Level	Source Result	%REC	%REC Limits	RPD	RPD Limit	Notes
---------	--------	-----------------	-------	-------------	---------------	------	-------------	-----	-----------	-------

Batch B1G1201 - EPA 5030 (soil)

Blank (B1G1201-BLK1)

Prepared: 07/12/2021 Analyzed: 07/12/2021

1,2,4-Trimethylbenzene	ND	0.00200	mg/kg							U
Naphthalene	ND	0.0100	"							U
1,3,5-Trimethylbenzene	ND	0.00200	"							U
Benzene	ND	0.00200	"							U
Ethylbenzene	ND	0.00200	"							U
Toluene	ND	0.00200	"							U
Gasoline Range Hydrocarbons	ND	0.200	"							U
Xylenes, total	ND	0.00200	"							U
Surrogate: 1,2-Dichloroethane-d4	0.12		"	0.125		92.6	70-130			
Surrogate: Toluene-d8	0.12		"	0.125		94.8	70-130			
Surrogate: 4-Bromofluorobenzene	0.12		"	0.125		99.9	70-130			

Origins Laboratory, Inc.



Jen Pellegrini, Project Manager

The results in this report apply to the samples analyzed in accordance with the chain of custody document. This analytical report must be reproduced in its entirety.

Tasman Geosciences
 6855 West 119th Avenue
 Broomfield CO 80020

Jake Whritenour
 Project Number: [none]
 Project: Noble - Reistad 01

Volatile Organic Compounds by GC/MS SW846 8260D - Quality Control
Origins Laboratory, Inc.

Analyte	Result	Reporting Limit	Units	Spike Level	Source Result	%REC	%REC Limits	RPD	RPD Limit	Notes
---------	--------	-----------------	-------	-------------	---------------	------	-------------	-----	-----------	-------

Batch B1G1201 - EPA 5030 (soil)

LCS (B1G1201-BS1)

Prepared: 07/12/2021 Analyzed: 07/12/2021

1,2,4-Trimethylbenzene	0.0518	0.00200	mg/kg	0.0500		104	70-130			
Naphthalene	0.0484	0.0100	"	0.0500		96.8	70-130			
1,3,5-Trimethylbenzene	0.0513	0.00200	"	0.0500		103	70-130			
Benzene	0.0540	0.00200	"	0.0500		108	70-130			
Ethylbenzene	0.0517	0.00200	"	0.0500		103	70-130			
m,p-Xylene	0.105	0.00400	"	0.100		105	70-130			
o-Xylene	0.0513	0.00200	"	0.0500		103	70-130			
Toluene	0.0510	0.00200	"	0.0500		102	70-130			
Surrogate: 1,2-Dichloroethane-d4	0.12		"	0.125		93.4	70-130			
Surrogate: Toluene-d8	0.12		"	0.125		95.7	70-130			
Surrogate: 4-Bromofluorobenzene	0.12		"	0.125		98.0	70-130			

Origins Laboratory, Inc.



Jen Pellegrini, Project Manager

The results in this report apply to the samples analyzed in accordance with the chain of custody document. This analytical report must be reproduced in its entirety.

Tasman Geosciences
 6855 West 119th Avenue
 Broomfield CO 80020

Jake Whritenour
 Project Number: [none]
 Project: Noble - Reistad 01

Volatile Organic Compounds by GC/MS SW846 8260D - Quality Control
Origins Laboratory, Inc.

Analyte	Result	Reporting Limit	Units	Spike Level	Source Result	%REC	%REC Limits	RPD	RPD Limit	Notes
---------	--------	-----------------	-------	-------------	---------------	------	-------------	-----	-----------	-------

Batch B1G1201 - EPA 5030 (soil)

Matrix Spike (B1G1201-MS1)	Source: Y107217-01			Prepared: 07/12/2021 Analyzed: 07/12/2021						
1,2,4-Trimethylbenzene	0.0556	0.00200	mg/kg	0.0500	0.000600	110	70-130			
Naphthalene	0.0536	0.0100	"	0.0500	0.00282	102	70-130			
1,3,5-Trimethylbenzene	0.0549	0.00200	"	0.0500	0.000440	109	70-130			
Benzene	0.0587	0.00200	"	0.0500	ND	117	70-130			
Ethylbenzene	0.0541	0.00200	"	0.0500	ND	108	70-130			
m,p-Xylene	0.110	0.00400	"	0.100	ND	110	70-130			
o-Xylene	0.0546	0.00200	"	0.0500	ND	109	70-130			
Toluene	0.0552	0.00200	"	0.0500	ND	110	70-130			
Surrogate: 1,2-Dichloroethane-d4	0.12		"	0.125		94.9	70-130			
Surrogate: Toluene-d8	0.12		"	0.125		95.0	70-130			
Surrogate: 4-Bromofluorobenzene	0.12		"	0.125		98.0	70-130			

Origins Laboratory, Inc.



Jen Pellegrini, Project Manager

The results in this report apply to the samples analyzed in accordance with the chain of custody document. This analytical report must be reproduced in its entirety.

Tasman Geosciences
 6855 West 119th Avenue
 Broomfield CO 80020

Jake Whritenour
 Project Number: [none]
 Project: Noble - Reistad 01

Volatile Organic Compounds by GC/MS SW846 8260D - Quality Control
Origins Laboratory, Inc.

Analyte	Result	Reporting Limit	Units	Spike Level	Source Result	%REC	%REC Limits	RPD	RPD Limit	Notes
---------	--------	-----------------	-------	-------------	---------------	------	-------------	-----	-----------	-------

Batch B1G1201 - EPA 5030 (soil)

Matrix Spike Dup (B1G1201-MSD1)	Source: Y107217-01			Prepared: 07/12/2021 Analyzed: 07/12/2021						
1,2,4-Trimethylbenzene	0.0609	0.00200	mg/kg	0.0500	0.000600	121	70-130	9.10	20	
Naphthalene	0.0611	0.0100	"	0.0500	0.00282	117	70-130	13.0	20	
1,3,5-Trimethylbenzene	0.0605	0.00200	"	0.0500	0.000440	120	70-130	9.68	20	
Benzene	0.0653	0.00200	"	0.0500	ND	131	70-130	10.7	20	QM-07
Ethylbenzene	0.0611	0.00200	"	0.0500	ND	122	70-130	12.1	20	
m,p-Xylene	0.123	0.00400	"	0.100	ND	123	70-130	10.9	20	
o-Xylene	0.0610	0.00200	"	0.0500	ND	122	70-130	11.2	20	
Toluene	0.0606	0.00200	"	0.0500	ND	121	70-130	9.37	20	
Surrogate: 1,2-Dichloroethane-d4	0.12		"	0.125		94.2	70-130			
Surrogate: Toluene-d8	0.12		"	0.125		95.6	70-130			
Surrogate: 4-Bromofluorobenzene	0.12		"	0.125		99.7	70-130			

Origins Laboratory, Inc.



Jen Pellegrini, Project Manager

The results in this report apply to the samples analyzed in accordance with the chain of custody document. This analytical report must be reproduced in its entirety.

Tasman Geosciences
 6855 West 119th Avenue
 Broomfield CO 80020

Jake Whritenour
 Project Number: [none]
 Project: Noble - Reistad 01

Volatile Organic Compounds by GC/MS SW846 8260D - Quality Control
Origins Laboratory, Inc.

Analyte	Result	Reporting Limit	Units	Spike Level	Source Result	%REC	%REC Limits	RPD	RPD Limit	Notes
---------	--------	-----------------	-------	-------------	---------------	------	-------------	-----	-----------	-------

Classical Chemistry Parameters - Quality Control
Origins Laboratory, Inc.

Analyte	Result	Reporting Limit	Units	Spike Level	Source Result	%REC	%REC Limits	RPD	RPD Limit	Notes
---------	--------	-----------------	-------	-------------	---------------	------	-------------	-----	-----------	-------

Batch B1G0924 - Default Prep Metals

Blank (B1G0924-BLK1)

Prepared: 07/09/2021 Analyzed: 07/12/2021

Boron	ND	0.200	mg/L							
-------	----	-------	------	--	--	--	--	--	--	--

Origins Laboratory, Inc.



Jen Pellegrini, Project Manager

The results in this report apply to the samples analyzed in accordance with the chain of custody document. This analytical report must be reproduced in its entirety.

Tasman Geosciences
 6855 West 119th Avenue
 Broomfield CO 80020

Jake Whritenour
 Project Number: [none]
 Project: Noble - Reistad 01

Saturated Paste - Quality Control
Origins Laboratory, Inc.

Analyte	Result	Reporting Limit	Units	Spike Level	Source Result	%REC	%REC Limits	RPD	RPD Limit	Notes
Batch B1G1210 - NO PREP										
Duplicate (B1G1210-DUP1)		Source: Y107177-13			Prepared: 07/12/2021 Analyzed: 07/13/2021					
pH	7.74		pH Units		8.00			3.30	25	
Batch B1G1213 - NO PREP										
Blank (B1G1213-BLK1)		Prepared: 07/12/2021 Analyzed: 07/13/2021								
Specific Conductance (EC)	ND	0.00500	mmhos/cm							
Duplicate (B1G1213-DUP1)		Source: Y107177-13			Prepared: 07/12/2021 Analyzed: 07/13/2021					
Specific Conductance (EC)	1.45	0.00500	mmhos/cm		1.56			7.76	25	

Origins Laboratory, Inc.



Jen Pellegrini, Project Manager

The results in this report apply to the samples analyzed in accordance with the chain of custody document. This analytical report must be reproduced in its entirety.

Tasman Geosciences
 6855 West 119th Avenue
 Broomfield CO 80020

Jake Whritenour
 Project Number: [none]
 Project: Noble - Reistad 01

PAH by 8270D SIM - Quality Control
Waypoint Analytical, Inc.

Analyte	Result	Reporting Limit	Units	Spike Level	Source Result	%REC	%REC Limits	RPD	RPD Limit	Notes
---------	--------	-----------------	-------	-------------	---------------	------	-------------	-----	-----------	-------

Batch L563221 - 3550B

MSD (L 92033-MSD-L563221)	Source: 92033				Prepared: 07/12/2021 Analyzed: 07/12/2021						
Benzo(k)fluoranthene	0.162	0.000486	mg/Kg	0.165	92033	98.1	30-130	7.6	30		
Pyrene	0.134	0.000387	"	0.165	92033	81.2	30-130	8.5	30		
Naphthalene	0.122	0.000467	"	0.165	92033	73.9	30-130	14	30		
Indeno(1,2,3-cd)pyrene	0.104	0.000344	"	0.165	92033	63	30-130	0	30		
Fluorene	0.137	0.000501	"	0.165	92033	83	30-130	9.1	30		
Fluoranthene	0.136	0.000529	"	0.165	92033	82.4	30-130	9.2	30		
Chrysene	0.153	0.000256	"	0.165	92033	92.7	30-130	10.3	30		
Benzo(b)fluoranthene	0.113	0.000138	"	0.165	92033	68.4	30-130	2.6	30		
Dibenz(a,h)anthracene	0.107	0.000279	"	0.165	92033	64.8	30-130	1.8	30		
1-Methylnaphthalene	0.121	0.00048	"	0.165	92033	73.3	30-130	10.4	30		
Benzo(a)pyrene	0.144	0.000133	"	0.165	92033	87.2	30-130	7.9	30		
2-Methylnaphthalene	0.122	0.000542	"	0.165	92033	73.9	30-130	12.1	30		
Acenaphthene	0.127	0.000431	"	0.165	92033	76.9	30-130	7.3	30		
Anthracene	0.148	0.000426	"	0.165	92033	89.6	30-130	9.1	30		
Benzo(a)anthracene	0.137	0.000441	"	0.165	92033	83	30-130	9.9	30		
Surrogate: Nitrobenzene-d5	68.4		"	0.33	210	68.4	29-110				
Surrogate: 2-Fluorobiphenyl	80.3		"	0.33	254	80.3	33-115				
Surrogate: 4-Terphenyl-d14	85.4		"	0.33	285	85.4	33-122				

MS (L 92033-MS-L563221)	Source: 92033				Prepared: 07/12/2021 Analyzed: 07/12/2021						
Benzo(b)fluoranthene	0.11	0.000138	mg/Kg	0.166	92033	66.2	30-130				
Indeno(1,2,3-cd)pyrene	0.104	0.000344	"	0.166	92033	62.6	30-130				
Naphthalene	0.106	0.000467	"	0.166	92033	63.8	30-130				
Fluorene	0.125	0.000501	"	0.166	92033	75.3	30-130				
Fluoranthene	0.124	0.000529	"	0.166	92033	74.6	30-130				
Dibenz(a,h)anthracene	0.105	0.000279	"	0.166	92033	63.2	30-130				
Chrysene	0.138	0.000256	"	0.166	92033	83.1	30-130				

Origins Laboratory, Inc.



Jen Pellegrini, Project Manager

The results in this report apply to the samples analyzed in accordance with the chain of custody document. This analytical report must be reproduced in its entirety.

Tasman Geosciences
 6855 West 119th Avenue
 Broomfield CO 80020

Jake Whritenour
 Project Number: [none]
 Project: Noble - Reistad 01

PAH by 8270D SIM - Quality Control
Waypoint Analytical, Inc.

Analyte	Result	Reporting Limit	Units	Spike Level	Source Result	%REC	%REC Limits	RPD	RPD Limit	Notes
---------	--------	-----------------	-------	-------------	---------------	------	-------------	-----	-----------	-------

Batch L563221 - 3550B

MS (L 92033-MS-L563221)	Source: 92033			Prepared: 07/12/2021 Analyzed: 07/12/2021						
Benzo(k)fluoranthene	0.15	0.000486	mg/Kg	0.166	92033	90.3	30-130			
Pyrene	0.123	0.000387	"	0.166	92033	74	30-130			
1-Methylnaphthalene	0.109	0.00048	"	0.166	92033	65.6	30-130			
Benzo(a)anthracene	0.124	0.000441	"	0.166	92033	74.6	30-130			
Anthracene	0.135	0.000426	"	0.166	92033	81.3	30-130			
Acenaphthene	0.118	0.000431	"	0.166	92033	71	30-130			
2-Methylnaphthalene	0.108	0.000542	"	0.166	92033	65	30-130			
Benzo(a)pyrene	0.133	0.000133	"	0.166	92033	80.1	30-130			
Surrogate: 4-Terphenyl-d14	79.7		"	0.331	285	79.7	33-122			
Surrogate: 2-Fluorobiphenyl	75.8		"	0.331	254	75.8	33-115			
Surrogate: Nitrobenzene-d5	61		"	0.331	210	61	29-110			

LCS (LCS-L563221)	Prepared: 07/12/2021 Analyzed: 07/12/2021									
Benzo(a)pyrene	0.136	0.000133	mg/Kg	0.167		81.4	30-130			
2-Methylnaphthalene	0.116	0.000542	"	0.167		69.4	30-130			
Benzo(b)fluoranthene	0.109	0.000138	"	0.167		65.2	30-130			
Dibenz(a,h)anthracene	0.102	0.000279	"	0.167		61	30-130			
Pyrene	0.135	0.000387	"	0.167		80.8	30-130			
1-Methylnaphthalene	0.116	0.00048	"	0.167		69.4	30-130			
Chrysene	0.147	0.000256	"	0.167		88	30-130			
Naphthalene	0.118	0.000467	"	0.167		70.6	30-130			
Fluoranthene	0.134	0.000529	"	0.167		80.2	30-130			
Fluorene	0.136	0.000501	"	0.167		81.4	30-130			
Indeno(1,2,3-cd)pyrene	0.101	0.000344	"	0.167		60.4	30-130			
Acenaphthene	0.127	0.000431	"	0.167		76	30-130			
Benzo(a)anthracene	0.129	0.000441	"	0.167		77.2	30-130			
Anthracene	0.134	0.000426	"	0.167		80.2	30-130			

Origins Laboratory, Inc.



Jen Pellegrini, Project Manager

The results in this report apply to the samples analyzed in accordance with the chain of custody document. This analytical report must be reproduced in its entirety.

Tasman Geosciences
 6855 West 119th Avenue
 Broomfield CO 80020

Jake Whritenour
 Project Number: [none]
 Project: Noble - Reistad 01

PAH by 8270D SIM - Quality Control
Waypoint Analytical, Inc.

Analyte	Result	Reporting Limit	Units	Spike Level	Source Result	%REC	%REC Limits	RPD	RPD Limit	Notes
---------	--------	-----------------	-------	-------------	---------------	------	-------------	-----	-----------	-------

Batch L563221 - 3550B

LCS (LCS-L563221)

Prepared: 07/12/2021 Analyzed: 07/12/2021

Benzo(k)fluoranthene	0.151	0.000486	mg/Kg	0.167		90.4	30-130			
Surrogate: 4-Terphenyl-d14	87.6		"	0.333		87.6	33-122			
Surrogate: 2-Fluorobiphenyl	84.6		"	0.333		84.6	33-115			
Surrogate: Nitrobenzene-d5	73.2		"	0.333		73.2	29-110			

LRB (LRB-L563221)

Prepared: 07/12/2021 Analyzed: 07/12/2021

Fluorene	ND	0.00067	mg/Kg				-			
1-Methylnaphthalene	ND	0.00067	"				-			
2-Methylnaphthalene	ND	0.00067	"				-			
Acenaphthene	ND	0.00067	"				-			
Anthracene	ND	0.00067	"				-			
Benzo(a)anthracene	ND	0.00067	"				-			
Benzo(a)pyrene	ND	0.00067	"				-			
Benzo(b)fluoranthene	ND	0.00067	"				-			
Pyrene	ND	0.00067	"				-			
Benzo(k)fluoranthene	ND	0.00067	"				-			
Chrysene	ND	0.00067	"				-			
Fluoranthene	ND	0.00067	"				-			
Indeno(1,2,3-cd)pyrene	ND	0.00067	"				-			
Naphthalene	ND	0.00067	"				-			
Dibenz(a,h)anthracene	ND	0.00067	"				-			
Surrogate: 4-Terphenyl-d14	83.4		"	0.333		83.4	33-122			
Surrogate: 2-Fluorobiphenyl	77.1		"	0.333		77.1	33-115			
Surrogate: Nitrobenzene-d5	69.6		"	0.333		69.6	29-110			

Origins Laboratory, Inc.



Jen Pellegrini, Project Manager

The results in this report apply to the samples analyzed in accordance with the chain of custody document. This analytical report must be reproduced in its entirety.

Tasman Geosciences
 6855 West 119th Avenue
 Broomfield CO 80020

Jake Whritenour
 Project Number: [none]
 Project: Noble - Reistad 01

Total Metals by 6020B - Quality Control
Waypoint Analytical, Inc.

Analyte	Result	Reporting Limit	Units	Spike Level	Source Result	%REC	%REC Limits	RPD	RPD Limit	Notes
---------	--------	-----------------	-------	-------------	---------------	------	-------------	-----	-----------	-------

Batch L563220 - 3050B

MSD (L 95077-MSD-L563220)		Source: 95077			Prepared: 07/12/2021 Analyzed: 07/13/2021					
Barium	98.5	0.042	mg/Kg	4.6	80.9	383	75-125	40.6	80	*
Zinc	102	0.534	"	23	70.1	139	75-125	40	80	*
Silver	0.524	0.0067	"	0.46	0.0796	114	75-125	1.3	80	*
Selenium	3.7	0.103	"	4.6	0.533	69	75-125	3.2	80	*
Nickel	19.2	0.0633	"	2.3	15.1	178	75-125	33.7	80	*
Lead	16.2	0.031	"	2.3	13.2	130	75-125	18.9	80	*
Cadmium	0.657	0.0259	"	0.46	0.172	143	75-125	6.9	80	*
Arsenic	4.27	0.0855	"	2.3	1.83	106	75-125	28.1	80	*
Copper	22.8	0.0806	"	2.3	18.6	183	75-125	30.1	80	*

MS (L 95077-MS-L563220)		Source: 95077			Prepared: 07/12/2021 Analyzed: 07/13/2021					
Silver	0.531	0.0067	mg/Kg	0.485	0.0796	109	75-125			
Arsenic	5.67	0.0855	"	2.42	1.83	158	75-125			*
Barium	65.2	0.042	"	4.85	80.9	NR	75-125			*
Cadmium	0.704	0.0259	"	0.485	0.172	145	75-125			*
Copper	30.9	0.161	"	2.42	18.6	507	75-125			*
Lead	13.4	0.031	"	2.42	13.2	8	75-125			*
Nickel	27	0.0633	"	2.42	15.1	491	75-125			*
Selenium	3.58	0.103	"	4.85	0.533	63	75-125			*
Zinc	153	0.534	"	24.2	70.1	342	75-125			*

LCS (LCS-L563220)		Prepared: 07/12/2021 Analyzed: 07/13/2021								
Lead	2.54	0.031	mg/Kg	2.5		102	80-120			
Arsenic	2.47	0.0855	"	2.5		99	80-120			
Barium	5.22	0.042	"	5		104	80-120			
Copper	2.59	0.0806	"	2.5		104	80-120			
Zinc	26.7	0.534	"	25		107	80-120			

Origins Laboratory, Inc.



Jen Pellegrini, Project Manager

The results in this report apply to the samples analyzed in accordance with the chain of custody document. This analytical report must be reproduced in its entirety.

Tasman Geosciences
 6855 West 119th Avenue
 Broomfield CO 80020

Jake Whritenour
 Project Number: [none]
 Project: Noble - Reistad 01

Total Metals by 6020B - Quality Control
Waypoint Analytical, Inc.

Analyte	Result	Reporting Limit	Units	Spike Level	Source Result	%REC	%REC Limits	RPD	RPD Limit	Notes
---------	--------	-----------------	-------	-------------	---------------	------	-------------	-----	-----------	-------

Batch L563220 - 3050B

LCS (LCS-L563220)

Prepared: 07/12/2021 Analyzed: 07/13/2021

Selenium	5.13	0.103	mg/Kg	5		103	80-120			
Silver	0.507	0.0067	"	0.5		101	80-120			
Cadmium	0.497	0.0259	"	0.5		99	80-120			
Nickel	2.42	0.0633	"	2.5		97	80-120			

LRB (LRB-L563220)

Prepared: 07/12/2021 Analyzed: 07/13/2021

Nickel	ND	0.25	mg/Kg				-			
Arsenic	ND	0.25	"				-			
Barium	0.0432	0.25	"				-			J
Cadmium	ND	0.25	"				-			
Lead	ND	0.25	"				-			
Selenium	ND	0.25	"				-			
Silver	ND	0.25	"				-			
Zinc	ND	2.5	"				-			
Copper	0.148	0.25	"				-			J

Origins Laboratory, Inc.



Jen Pellegrini, Project Manager

The results in this report apply to the samples analyzed in accordance with the chain of custody document. This analytical report must be reproduced in its entirety.

Tasman Geosciences
 6855 West 119th Avenue
 Broomfield CO 80020

Jake Whritenour
 Project Number: [none]
 Project: Noble - Reistad 01

Total Metals by 7196A - Quality Control
Waypoint Analytical, Inc.

Analyte	Result	Reporting Limit	Units	Spike Level	Source Result	%REC	%REC Limits	RPD	RPD Limit	Notes
Batch L563789 -										
DUP (L 92024-DUP)		Source: Y107178-08			Prepared: Analyzed: 07/15/2021					
Chromium, Hexavalent	ND	0.488	mg/Kg		92024		-	0	20	
MS (L 92024-MS)		Source: Y107178-08			Prepared: Analyzed: 07/15/2021					
Chromium, Hexavalent	3.27	0.488	mg/Kg	7.76	92024	42	75-125			*
LCS (LCS)		Prepared: Analyzed: 07/15/2021								
Chromium, Hexavalent	7	0.244	mg/Kg	8		88	75-125			
LRB (LRB)		Prepared: Analyzed: 07/15/2021								
Chromium, Hexavalent	0.317	0.5	mg/Kg				-			J

Origins Laboratory, Inc.



Jen Pellegrini, Project Manager

The results in this report apply to the samples analyzed in accordance with the chain of custody document. This analytical report must be reproduced in its entirety.

Tasman Geosciences
6855 West 119th Avenue
Broomfield CO 80020

Jake Whritenour
Project Number: [none]
Project: Noble - Reistad 01

Notes and Definitions

U Sample is Non-Detect.

QR-03 The RPD value for the sample duplicate or MS/MSD was outside of QC acceptance limits due to matrix interference. QC batch accepted based on LCS and/or LCSD recovery and/or RPD values.

QM-07 The spike recovery was outside acceptance limits for the MS and/or MSD. The batch was accepted based on acceptable LCS recovery.

J Estimated Value. Analyte below reported quantitation limit.

* QC Failure

ND Analyte NOT DETECTED at or above the reporting limit

RPD Relative Percent Difference

All soil results are reported on a wet weight basis.

Origins Laboratory, Inc.



Jen Pellegrini, Project Manager

The results in this report apply to the samples analyzed in accordance with the chain of custody document. This analytical report must be reproduced in its entirety.

March 08, 2022

Tasman Geosciences

Jake Whritenour

6855 West 119th Avenue

Broomfield CO 80020

Project Name - Noble - Reistad 01

Project Number - [none]

Attached are your analytical results for Noble - Reistad 01 received by Origins Laboratory, Inc. March 01, 2022. This project is associated with Origins project number Y203026-01.

The analytical results in the following report were analyzed under the guidelines of EPA Methods. These methods are identified as follows; "SW" are defined in SW-846, "EPA" are defined in 40CFR part 136 and "SM" are defined in the most current revision of Standard Methods For the Examination of Water and Wastewater.

The analytical results apply specifically to the samples and analyses specified per the attached Chain of Custody. As such, this report shall not be reproduced except in full, without the written approval of Origin's laboratory.

Unless otherwise noted, the analytical results for all soil samples are reported on a wet weight basis. All analytical analyses were performed under NELAP guidelines unless noted by a data qualifier.

Any holding time exceedances, deviations from the method specifications or deviations from Origins Laboratory's Standard Operating Procedures are outlined in the case narrative.

Thank you for selecting Origins for your analytical needs. Please contact us with any questions concerning this report, or if we can help with anything at all.

Origins Laboratory, Inc.
303.433.1322
o-squad@oelabinc.com



Tasman Geosciences
6855 West 119th Avenue
Broomfield CO 80020

Jake Whritenour
Project Number: [none]
Project: Noble - Reistad 01

CROSS REFERENCE REPORT

Sample ID	Laboratory ID	Matrix	Date Sampled	Date Received
BG01@0.5'	Y203026-01	Soil	March 1, 2022 13:10	03/01/2022 16:15
BG01@2-3'	Y203026-02	Soil	March 1, 2022 13:15	03/01/2022 16:15
BG01@6'	Y203026-03	Soil	March 1, 2022 13:20	03/01/2022 16:15
BG01@7'	Y203026-04	Soil	March 1, 2022 13:25	03/01/2022 16:15
BG01@10-12'	Y203026-05	Soil	March 1, 2022 13:30	03/01/2022 16:15

Origins Laboratory, Inc.



Jen Pellegrini, Project Manager

The results in this report apply to the samples analyzed in accordance with the chain of custody document. This analytical report must be reproduced in its entirety.

Tasman Geosciences
 6855 West 119th Avenue
 Broomfield CO 80020

Jake Whritenour
 Project Number: [none]
 Project: Noble - Reistad 01

Origins Laboratory F-012207-01-R1
Effective Date: 01/09/12

Sample Receipt Checklist

Origins Work Order: Y302024 Client: Tasman Noble
 Client Project ID: Reistad

Checklist Completed by: JM Shipped Via: HD
 Date/time completed: 3-20-22 Airbill # WIA
(UPS, FedEx, Hand Delivered, Pick-up, etc.)

Matrix(s) Received: (Check all that apply): Soil/Solid Water Other: _____

Cooler Number/Temperature: 1, 6 °C / _____ °C / _____ °C (Describe) _____ °C

Thermometer ID: T003

Requirement Description	Yes	No	N/A	Comments (if any)
If samples require cooling, was the temperature between 0°C to ≤ 6°C ⁽¹⁾ ?	X			
Is there ice present (document if blue ice is used)	X			
Are custody seals present on cooler? (if so, document in comments if they are signed and dated, broken or intact)		X		
Are custody seals present on each sample container? (if so, document in comments if they are signed and dated, broken or intact)		X		
Were all samples received intact ⁽¹⁾ ?	X			
Was adequate sample volume provided ⁽¹⁾ ?	X			
Are short holding time analytes or samples with HTs due within 48 hours present ⁽¹⁾ ?		X		
Is a chain-of-custody (COC) present and filled out completely ⁽¹⁾ ?	X			
Does the COC agree with the number and type of sample bottles received ⁽¹⁾ ?	X			
Do the sample IDs on the bottle labels match the COC ⁽¹⁾ ?	X			
Is the COC properly relinquished by the client with date and time recorded ⁽¹⁾ ?	X			
For volatiles in water – is there headspace (> ¼ inch bubble) present? If yes, contact client and note in narrative.			X	
Are samples preserved that require preservation and was it checked ⁽¹⁾ ? (note ID of confirmation instrument used in comments) / (preservation is not confirmed for subcontracted analyses in order to insure sample integrity) (pH < 2 for samples preserved with HNO ₃ , HCL, H ₂ SO ₄) / (pH > 10 for samples preserved with NaAsO ₂ +NaOH, ZnAc+NaOH)			X	
Additional Comments (if any):				

⁽¹⁾If NO, then contact the client before proceeding with analysis and note date/time and person contacted as well as the corrective action to in the additional comments (above) and the case narrative.

Reviewed by (Project Manager) JM Date/Time Reviewed 3-3-22

Origins Laboratory, Inc.

Jefe Pellegrini

Jen Pellegrini, Project Manager

The results in this report apply to the samples analyzed in accordance with the chain of custody document. This analytical report must be reproduced in its entirety.

Tasman Geosciences
 6855 West 119th Avenue
 Broomfield CO 80020

Jake Whritenour
 Project Number: [none]
 Project: Noble - Reistad 01

BG01@0.5'

3/1/2022 1:10:00PM

Analyte	Result	Min Detection Limit	Reporting Limit	Units	Dilution	Batch	Prepared	Analyzed	Notes
---------	--------	---------------------	-----------------	-------	----------	-------	----------	----------	-------

Origins Laboratory, Inc.
Y203026-01 (Soil)

Metals by Saturated Paste by EPA 6010

Calcium	23.2	0.499	meq/L	10	[CALC]	03/02/2022	03/03/2022
Magnesium	6.31	0.823	"	"	"	"	"
Sodium	11.9	0.435	"	"	"	"	"

pH in Soil by 9045D

pH	7.78		pH Units	1	B2C0209	03/02/2022	03/03/2022
----	------	--	----------	---	---------	------------	------------

SAR by 20B Saturated Paste

SAR	3.10		SAR	1	B2C0218	03/02/2022	03/03/2022
-----	------	--	-----	---	---------	------------	------------

Origins Laboratory, Inc.



Jen Pellegrini, Project Manager

The results in this report apply to the samples analyzed in accordance with the chain of custody document. This analytical report must be reproduced in its entirety.

Tasman Geosciences
6855 West 119th Avenue
Broomfield CO 80020

Jake Whritenour
Project Number: [none]
Project: Noble - Reistad 01

BG01@2-3'

3/1/2022 1:15:00PM

Analyte	Result	Min Detection Limit	Reporting Limit	Units	Dilution	Batch	Prepared	Analyzed	Notes
---------	--------	---------------------	-----------------	-------	----------	-------	----------	----------	-------

Waypoint Analytical, LLC.
Y203026-02 (Soil)

Total Metals by 6020B

Arsenic	3.6	0.0855	0.25	mg/Kg	5	L602812	03/03/2022	03/07/2022	
Selenium	0.374	0.103	0.25	"	"	"	"	"	

Origins Laboratory, Inc.



Jen Pellegrini, Project Manager

The results in this report apply to the samples analyzed in accordance with the chain of custody document. This analytical report must be reproduced in its entirety.

Tasman Geosciences
 6855 West 119th Avenue
 Broomfield CO 80020

Jake Whritenour
 Project Number: [none]
 Project: Noble - Reistad 01

BG01@6'
3/1/2022 1:20:00PM

Analyte	Result	Min Detection Limit	Reporting Limit	Units	Dilution	Batch	Prepared	Analyzed	Notes
---------	--------	---------------------	-----------------	-------	----------	-------	----------	----------	-------

Origins Laboratory, Inc.
Y203026-03 (Soil)

Boron (DTPA Sorbitol)

Boron	0.708		0.0983	mg/L	1	B2C0217	03/02/2022	03/03/2022	
-------	-------	--	--------	------	---	---------	------------	------------	--

Metals by Saturated Paste by EPA 6010

Calcium	3.11		0.499	meq/L	10	[CALC]	03/02/2022	03/03/2022	
Magnesium	3.64		0.823	"	"	"	"	"	
Sodium	1.47		0.435	"	"	"	"	"	

pH in Soil by 9045D

pH	8.05			pH Units	1	B2C0209	03/02/2022	03/03/2022	
----	------	--	--	----------	---	---------	------------	------------	--

SAR by 20B Saturated Paste

SAR	0.798			SAR	1	B2C0218	03/02/2022	03/03/2022	
-----	-------	--	--	-----	---	---------	------------	------------	--

Specific Conductance Mod. 9050A

Specific Conductance (EC)	0.784		0.00500	mmhos/cm	1	B2C0208	03/02/2022	03/03/2022	
---------------------------	-------	--	---------	----------	---	---------	------------	------------	--

Origins Laboratory, Inc.



Jen Pellegrini, Project Manager

The results in this report apply to the samples analyzed in accordance with the chain of custody document. This analytical report must be reproduced in its entirety.

Tasman Geosciences
 6855 West 119th Avenue
 Broomfield CO 80020

Jake Whritenour
 Project Number: [none]
 Project: Noble - Reistad 01

BG01@7'

3/1/2022 1:25:00PM

Analyte	Result	Min Detection Limit	Reporting Limit	Units	Dilution	Batch	Prepared	Analyzed	Notes
---------	--------	---------------------	-----------------	-------	----------	-------	----------	----------	-------

Origins Laboratory, Inc.
Y203026-04 (Soil)

Boron (DTPA Sorbitol)

Boron	0.660		0.100	mg/L	1	B2C0217	03/02/2022	03/03/2022	
-------	-------	--	-------	------	---	---------	------------	------------	--

Metals by Saturated Paste by EPA 6010

Calcium	3.02		0.499	meq/L	10	[CALC]	03/02/2022	03/03/2022	
Magnesium	3.41		0.823	"	"	"	"	"	
Sodium	1.30		0.435	"	"	"	"	"	

SAR by 20B Saturated Paste

SAR	0.728			SAR	1	B2C0218	"	"	
-----	-------	--	--	-----	---	---------	---	---	--

Specific Conductance Mod. 9050A

Specific Conductance (EC)	0.766		0.00500	mmhos/cm	1	B2C0208	03/02/2022	03/03/2022	
---------------------------	-------	--	---------	----------	---	---------	------------	------------	--

Total Metals by 6020B

Arsenic	4.49	0.0855	0.25	mg/Kg	5	L602812	03/03/2022	03/07/2022	
Selenium	0.279	0.103	0.25	"	"	"	"	"	

Origins Laboratory, Inc.



Jen Pellegrini, Project Manager

The results in this report apply to the samples analyzed in accordance with the chain of custody document. This analytical report must be reproduced in its entirety.

Tasman Geosciences
6855 West 119th Avenue
Broomfield CO 80020

Jake Whritenour
Project Number: [none]
Project: Noble - Reistad 01

BG01@10-12'

3/1/2022 1:30:00PM

Analyte	Result	Min Detection Limit	Reporting Limit	Units	Dilution	Batch	Prepared	Analyzed	Notes
---------	--------	---------------------	-----------------	-------	----------	-------	----------	----------	-------

Waypoint Analytical, LLC.
Y203026-05 (Soil)

Total Metals by 6020B

Arsenic	0.929	0.0855	0.25	mg/Kg	5	L602812	03/03/2022	03/07/2022	
Selenium	0.24	0.103	0.25	"	"	"	"	"	J

Origins Laboratory, Inc.



Jen Pellegrini, Project Manager

The results in this report apply to the samples analyzed in accordance with the chain of custody document. This analytical report must be reproduced in its entirety.

Tasman Geosciences
 6855 West 119th Avenue
 Broomfield CO 80020

Jake Whritenour
 Project Number: [none]
 Project: Noble - Reistad 01

Classical Chemistry Parameters - Quality Control
Origins Laboratory, Inc.

Analyte	Result	Reporting Limit	Units	Spike Level	Source Result	%REC	%REC Limits	RPD	RPD Limit	Notes
Batch B2C0217 - Default Prep Metals										
Blank (B2C0217-BLK1)					Prepared: 03/02/2022 Analyzed: 03/03/2022					
Boron	ND	0.100	mg/L							U
Duplicate (B2C0217-DUP1)					Source: Y203018-04 Prepared: 03/02/2022 Analyzed: 03/03/2022					
Boron	1.05	0.101	mg/L		1.08			3.37	50	

Origins Laboratory, Inc.



Jen Pellegrini, Project Manager

The results in this report apply to the samples analyzed in accordance with the chain of custody document. This analytical report must be reproduced in its entirety.

Tasman Geosciences
 6855 West 119th Avenue
 Broomfield CO 80020

Jake Whritenour
 Project Number: [none]
 Project: Noble - Reistad 01

Saturated Paste - Quality Control
Origins Laboratory, Inc.

Analyte	Result	Reporting Limit	Units	Spike Level	Source Result	%REC	%REC Limits	RPD	RPD Limit	Notes
Batch B2C0208 - NO PREP										
Blank (B2C0208-BLK1)					Prepared: 03/02/2022 Analyzed: 03/03/2022					
Specific Conductance (EC)	ND	0.00500	mmhos/cm							U
Duplicate (B2C0208-DUP1)					Source: Y203013-01 Prepared: 03/02/2022 Analyzed: 03/03/2022					
Specific Conductance (EC)	0.963	0.00500	mmhos/cm		0.875			9.50	25	
Batch B2C0209 - NO PREP										
Duplicate (B2C0209-DUP1)					Source: Y202404-02 Prepared: 03/02/2022 Analyzed: 03/03/2022					
pH	8.18		pH Units		8.28			1.22	25	

Origins Laboratory, Inc.



Jen Pellegrini, Project Manager

The results in this report apply to the samples analyzed in accordance with the chain of custody document. This analytical report must be reproduced in its entirety.

Tasman Geosciences
 6855 West 119th Avenue
 Broomfield CO 80020

Jake Whritenour
 Project Number: [none]
 Project: Noble - Reistad 01

Total Metals by 6020B - Quality Control
Waypoint Analytical, LLC.

Analyte	Result	Reporting Limit	Units	Spike Level	Source Result	%REC	%REC Limits	RPD	RPD Limit	Notes
Batch L602812 - 3050B										
MSD (L 85519-MSD-L602812)			Source: 85519		Prepared: 03/03/2022 Analyzed: 03/07/2022					
Selenium	4.13	0.103	mg/Kg	4.96	0.295	77	75-125	5.2	80	
Arsenic	3.03	0.0855	"	2.48	1.07	79	75-125	4	80	
MS (L 85519-MS-L602812)			Source: 85519		Prepared: 03/03/2022 Analyzed: 03/07/2022					
Selenium	3.92	0.103	mg/Kg	4.91	0.295	74	75-125			*
Arsenic	2.91	0.0855	"	2.45	1.07	75	75-125			
LCS (LCS-L602812)					Prepared: 03/03/2022 Analyzed: 03/07/2022					
Selenium	4.35	0.103	mg/Kg	5		87	80-120			
Arsenic	2.16	0.0855	"	2.5		86	80-120			
LRB (LRB-L602812)					Prepared: 03/03/2022 Analyzed: 03/07/2022					
Selenium	ND	0.25	mg/Kg				-			
Arsenic	ND	0.25	"				-			

Origins Laboratory, Inc.



Jen Pellegrini, Project Manager

The results in this report apply to the samples analyzed in accordance with the chain of custody document. This analytical report must be reproduced in its entirety.

Tasman Geosciences
6855 West 119th Avenue
Broomfield CO 80020

Jake Whritenour
Project Number: [none]
Project: Noble - Reistad 01

Notes and Definitions

- U Sample is Non-Detect.
- J Estimated Value. Analyte below reported quantitation limit.
- * QC Failure
- ND Analyte NOT DETECTED at or above the reporting limit
- RPD Relative Percent Difference

All soil results are reported on a wet weight basis.

Origins Laboratory, Inc.



Jen Pellegrini, Project Manager

The results in this report apply to the samples analyzed in accordance with the chain of custody document. This analytical report must be reproduced in its entirety.