

COGCC Operator Number: 96340

Name of Operator: Wiepking-Fullerton Energy, Inc.

Address: 4600 S. Downing St.

City: Englewood State: CO Zip: 80113

Contact Name & Telephone
Jeff Wiepking

No: (303) 789-1798

Fax: (303) 761-9067

24 hour notice required,
contact:

Tel:

API Number 073-06152

Well Name: Sellon Well Number: 29-8

Location (QtrQtr, Sec, Twp, Rng, Meridian): SENE Sec29-T11S-R55W

County: Lincoln Federal, Indian or State Lease Number:

Field Name: Wildcat Field Number: 99999

Complete the
Attachment Checklist

Wellbore Diagram	Oper	OGCC
Cement Job Summary		
Wireline Job Summary		

☒ Notice of Intent to Abandon

☐ Subsequent Report of Abandonment

Only Complete the Following Background Information for Intent to Abandon

Latitude: Longitude:

GPS Data:

Date of Measurement: PDOP Reading: Instrument Operator's Name:

Reason for Abandonment: ☐ Dry ☒ Production Sub-economic ☐ Mechanical Problems ☐ Other

Casing to be Pulled: ☒ Yes ☐ No Top of Casing Cement: 3100'

Fish in Hole: ☐ Yes ☒ No If yes, explain details below

Wellbore has Uncemented Casing Leaks: ☐ Yes ☒ No If yes, explain details below

Details: Cut and recover 5 1/2" casing from below 570'.

Current and Previously Abandoned Zones					
Formation	Perforations - Top	Perforations - Bottom	Date Abandoned	Method of Isolation (None, Squeezed, BP, Cement, etc.)	Plug Depth
Cherokee	7048	7054	?	CIBP w/ ? Sacks	7035 ?
Marmaton	6972 ?	6990 ?		none	

Casing History							
String	Size of Hole	Size of Casing	Weight per ft	Setting Depth	Sacks Cement	Cement Bottom	Cement Top
Surface	17 1/2"	13 3/8"	48	508	500	508	0
Intermediate	12 1/4"	8 5/8"	24	3654	200	3654	2500 est.
Production	7 7/8"	5 1/2"	15.5	7254	260	7254	5650 CBL
Port Collar	7 7/8"	5 1/2"	15.5	4507	300	4507	3100 CBL

Plugging Procedure for Intent and Subsequent Report

CIBP #1: Depth 6920 with 2 sacks cmt on top. CIBP #2: Depth with sacks cmt on top.

Set 20 sks cmt from 3700 ft. to 3600 ft. in ☒ Casing ☐ Open Hole ☐ Annulus

Set sks cmt from ft. to ft. in ☐ Casing ☐ Open Hole ☐ Annulus

Set sks cmt from ft. to ft. in ☐ Casing ☐ Open Hole ☐ Annulus

Set sks cmt from ft. to ft. in ☐ Casing ☐ Open Hole ☐ Annulus

Set sks cmt from ft. to ft. in ☐ Casing ☐ Open Hole ☐ Annulus

Perforate and squeeze at 4800 ft. with 40 sacks Leave at least 100 ft. in casing (Tag or use retainer)

Perforate and squeeze at 560 ft. with 100 sacks Leave at least 100 ft. in casing (Tag or use retainer)

Perforate and squeeze at ft. with sacks Leave at least 100 ft. in casing

Set sacks half in, half out surface casing from ft. to ft.

Set 35 sacks at surface (50': 15 sacks in 8 5/8" casing and 20 sacks between 8 5/8" and 13 3/8" casings)

Cut four feet below ground level, weld on plate Dry-Hole Marker: ☐ Yes ☐ No

Set sacks in rat hole Set sacks in mouse hole

NOTE: Two (2) sacks cement required on all CIBPs.

Additional Plugging Information for Subsequent Report Only

Casing Recovered: ft. of in. casing Plugging date:

*Wireline Contractor: *Cementing Contractor:

Type of Cement and Additives Used:

*Attach job summaries.

I hereby certify that the statements made in this form are, to the best of my knowledge, true, correct, and complete.

Print Name: Email:

Signed: Title: Date:

OGCC Approved: Title: Date: 7/1/09

CONDITIONS OF APPROVAL, IF ANY:

1) Provide 24 hour notice of MIRU to Mike Leonard at 719-767-2805 or e-mail at mike.leonard@state.co.us. 2) Tag cement plugs 4800' and 560' or use retainer. 3) Include ticket for existing CIBP at 7035' and submit Form 5A for Marmaton perfs.

073-06152

S

3900

Dkta

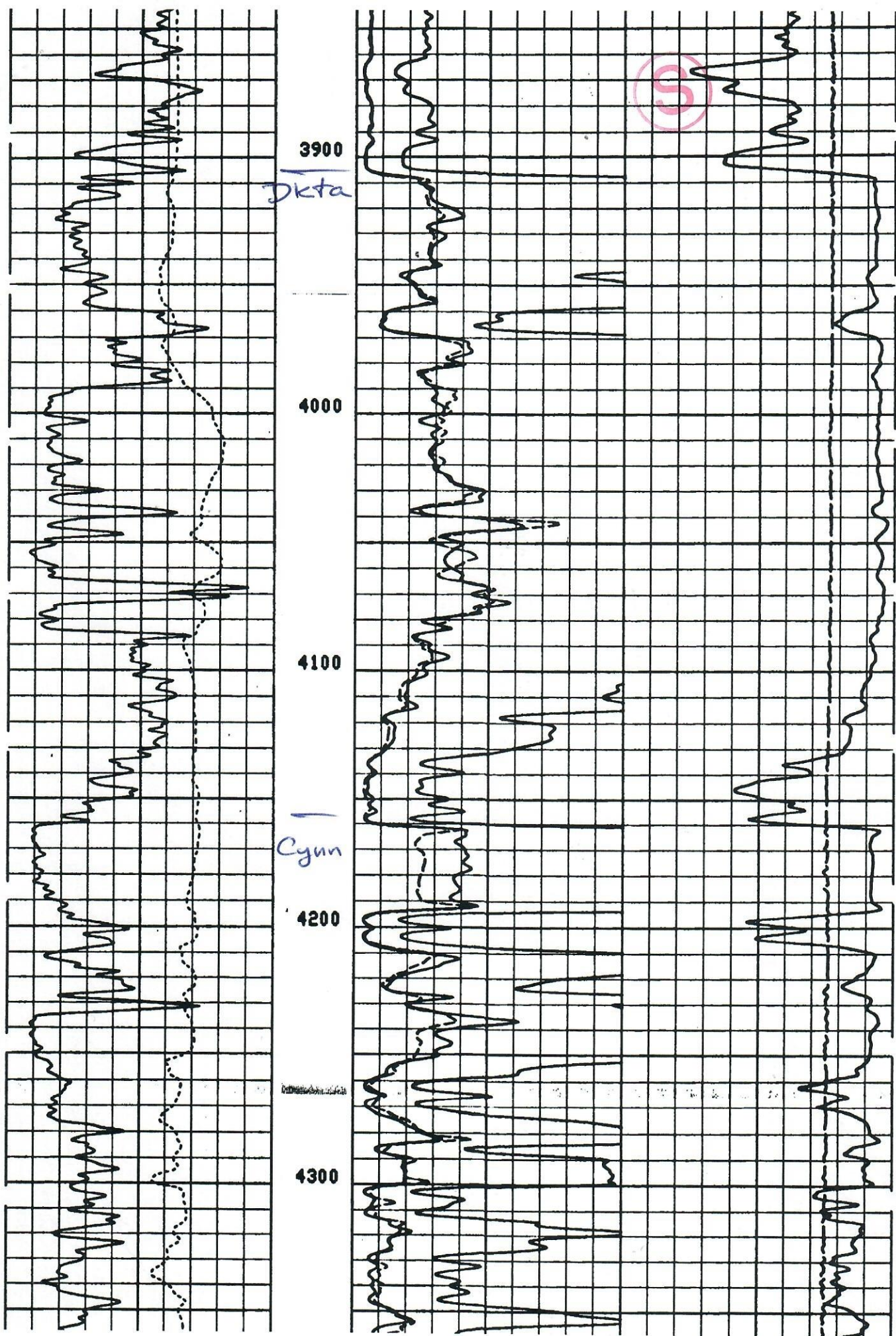
4000

4100

Cym

4200

4300



073-06152

