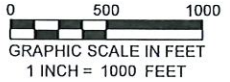
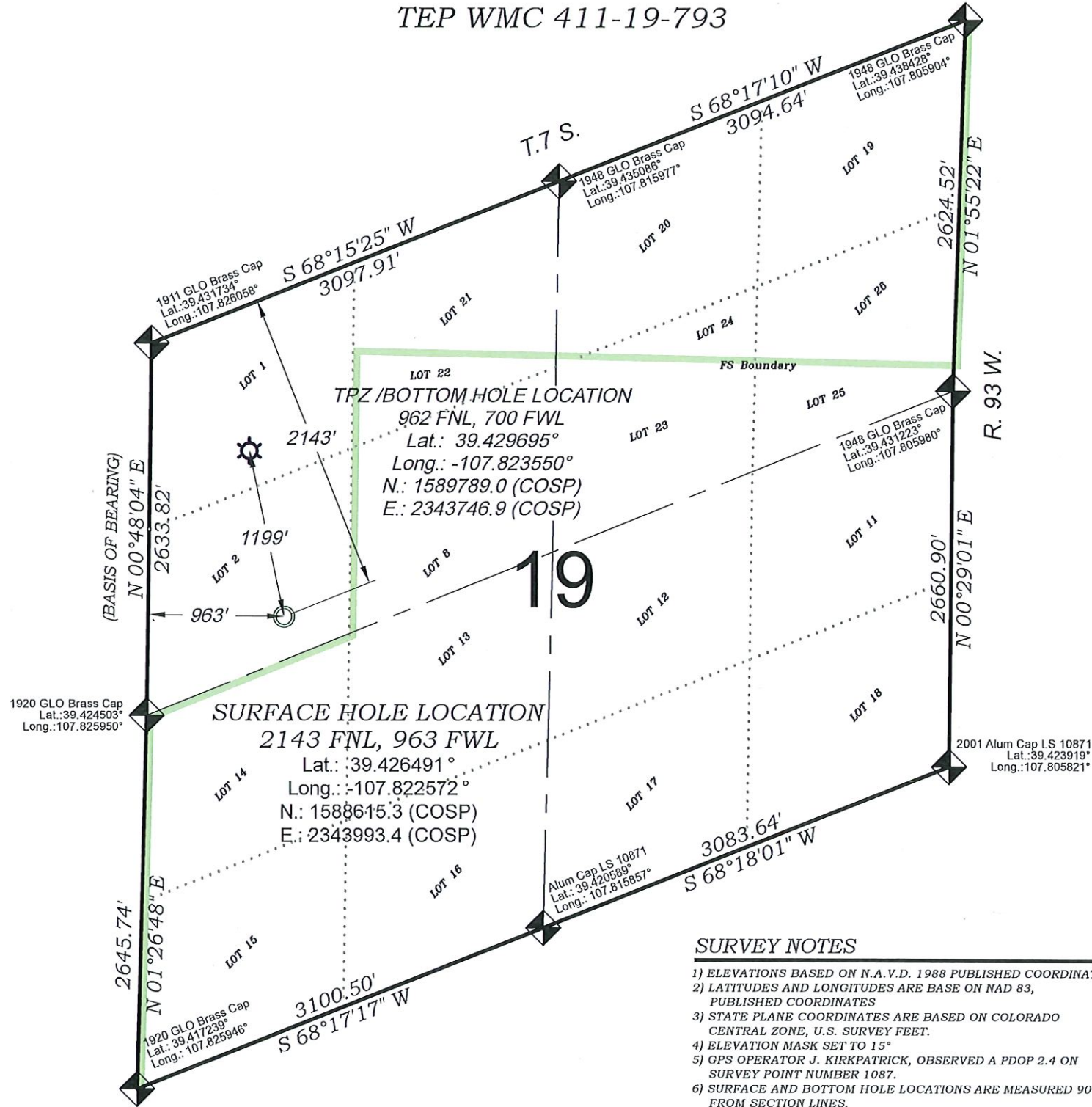


TEP WMC 411-19-793



- LEGEND -**
- FIELD LOCATED SECTION MONUMENTS AS DESCRIBED
  - FIELD SURVEYED WELL LOCATION
  - CALCULATED TOP OF PRODUCTION ZONE / BOTTOM HOLE LOCATION
  - CALCULATED SECTION CORNER LOCATION
- EXISTING GROUND ELEV.: 8562.9  
PROPOSED PAD ELEV.: 8563.4
- SEE CONSTRUCTION LAYOUT PLAT FOR VISIBLE IMPROVEMENTS WITHIN 500' OF THIS LOCATION

**SURVEY NOTES**

- 1) ELEVATIONS BASED ON N.A.V.D. 1988 PUBLISHED COORDINATES.
- 2) LATITUDES AND LONGITUDES ARE BASE ON NAD 83, PUBLISHED COORDINATES
- 3) STATE PLANE COORDINATES ARE BASED ON COLORADO CENTRAL ZONE, U.S. SURVEY FEET.
- 4) ELEVATION MASK SET TO 15"
- 5) GPS OPERATOR J. KIRKPATRICK, OBSERVED A PDOP 2.4 ON SURVEY POINT NUMBER 1087.
- 6) SURFACE AND BOTTOM HOLE LOCATIONS ARE MEASURED 90° FROM SECTION LINES.

**REFERENCES**

- 1) 1949 RESURVEY, T. 7 S., R. 93 W., 6th P.M. (BLM PLAT)
- 2) 2018 SUPPLEMENTAL PLAT SECTION 19, T. 7 S., R. 93 W., 6th P.M. (BLM PLAT)
- 3) U.S.G.S. QUAD: NORTH MAMM PEAK, CO

**SURVEYORS STATEMENT**

I, MICHAEL J. LANGHORNE, A REGISTERED LAND SURVEYOR IN THE STATE OF COLORADO DO HEREBY CERTIFY THAT THE SURVEY SHOWN HEREON WAS PREPARED UNDER MY DIRECT SUPERVISION AND HAS BEEN STAKED ON THE GROUND AS SHOWN ON THE PLAT AND CHECKING THAT THIS MAP IS A TRUE REPRESENTATION THEREOF.

*Michael J. Langhorne*  
MICHAEL J. LANGHORNE, COLORADO REGISTRATION NO. 36572  
FOR AND ON BEHALF OF  
BOOKCLIFF SURVEY SERVICES, INC.

136 East Third Street  
Rifle, Colorado 81650  
Ph. (970) 625-1330  
Fax (970) 625-2773

**BOOKCLIFF**  
Survey Services, Inc.

REVISED:	01/25/22
SURVEY DATE:	8/04/21
MAP DATE:	10/20/21
SCALE:	1" = 1000'
PROJECT:	TEP VALLEY

Construction Plan Prepared for:

**TERRA** TEP Rocky Mountain LLC

SW1/4 NW1/4, SECTION 19  
T. 7 S., R. 93 W. of the 6th. P.M.  
GARFIELD COUNTY, COLORADO