



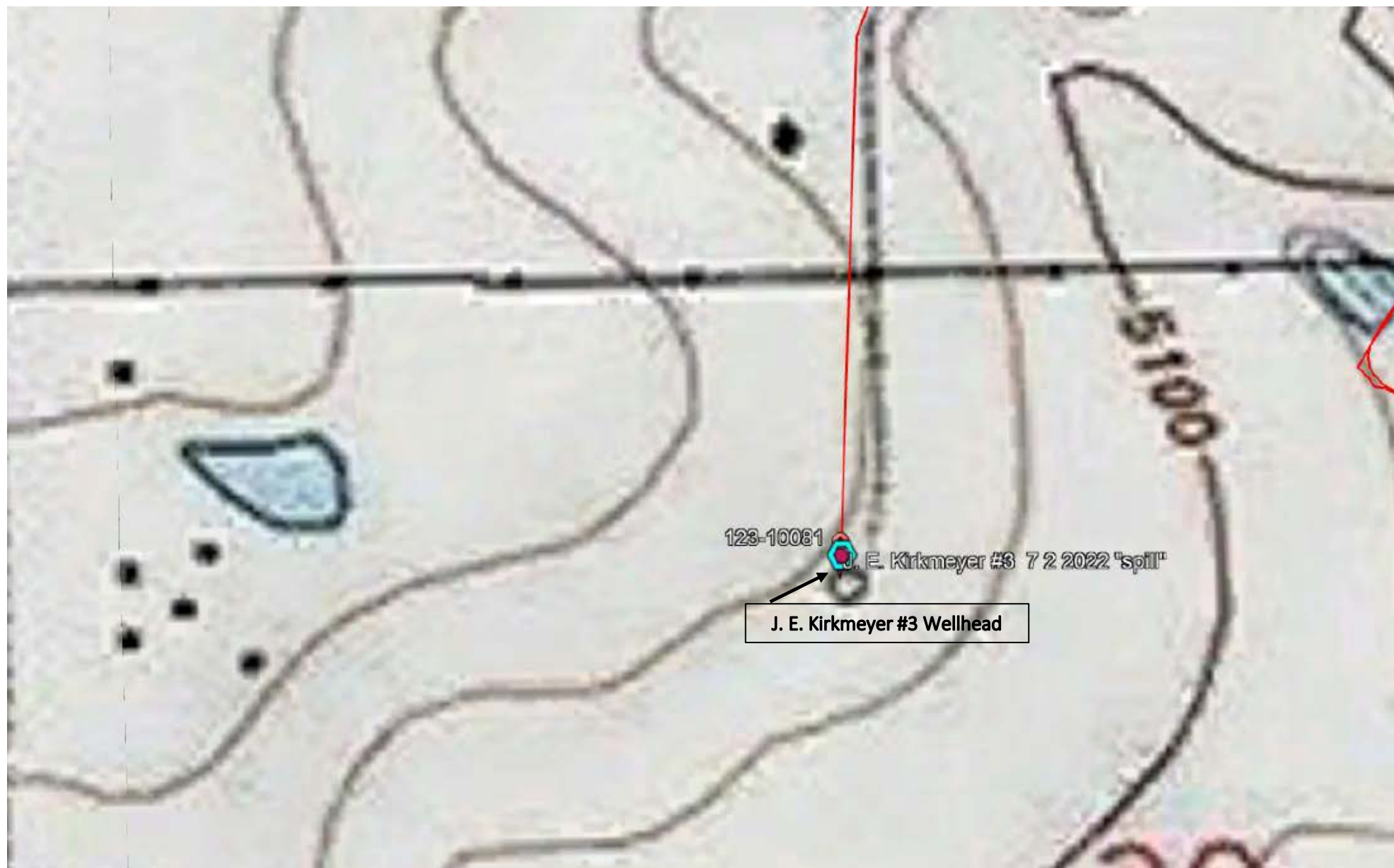
Date:	July 2022
Designed By:	K.P. Kauffman Co.
Drawn By:	RMG



K.P. Kauffman Company, Inc.  
1675 Broadway, Suite 2800  
Denver CO, 80202

**K.P. Kauffman Company, Inc.**  
**J. E. Kirkmeyer #3 "Spill"**  
SENW, Sec 30, T1N, R67W; Weld County, Colorado

**Figure #1**  
Site Map



Date:	July 2022
Designed By:	K.P. Kauffman Co.
Drawn By:	RMG

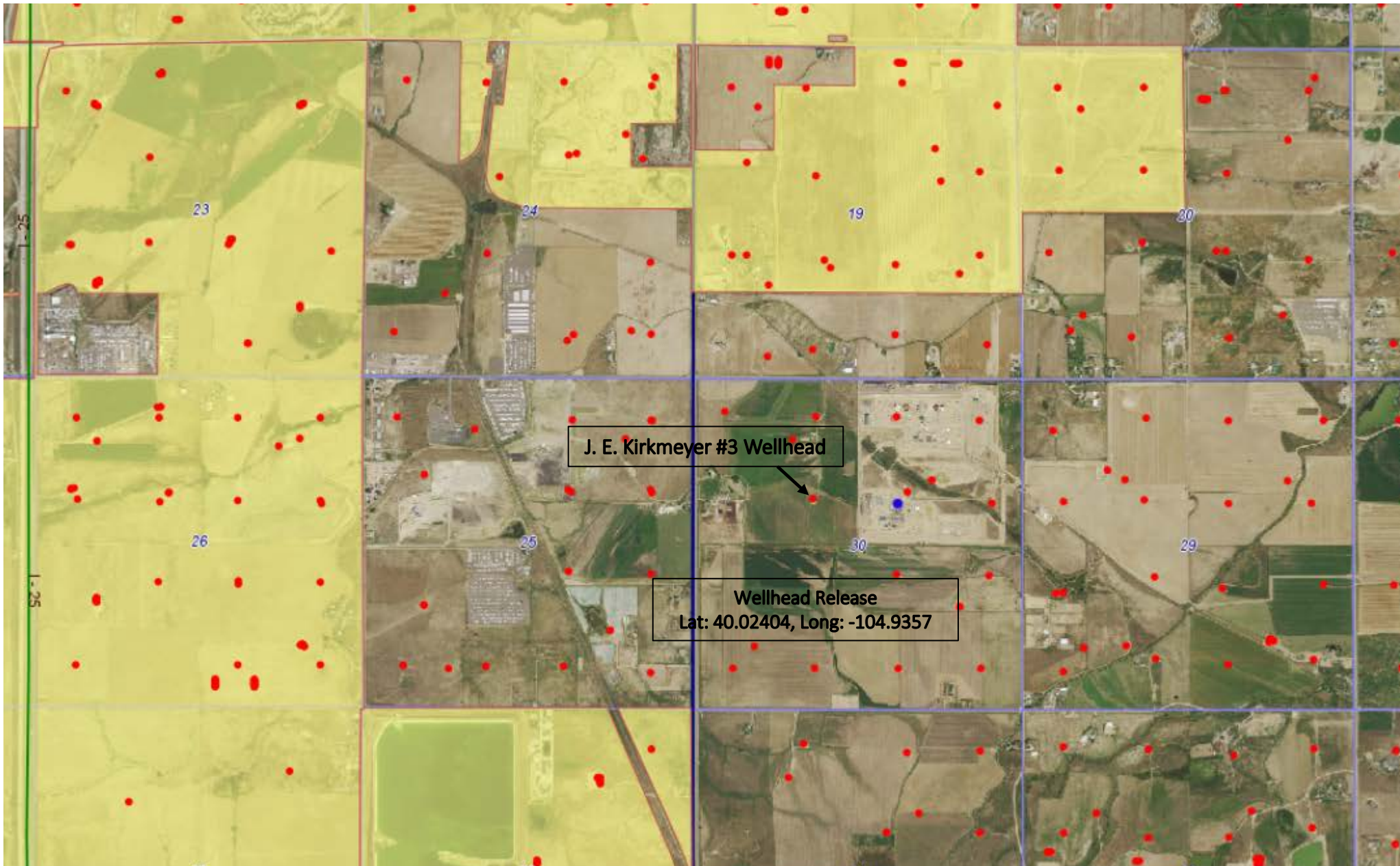


K.P. Kauffman Company, Inc.  
1675 Broadway, Suite 2800  
Denver CO, 80202

**K.P. Kauffman Company, Inc.**  
**J. E. Kirkmeyer #3 "Spill"**  
SENW, Sec 30, T1N, R67W; Weld County, Colorado

**Figure #2**  
Topo Map





Date:	July 2022
Designed By:	K.P. Kauffman Co.
Drawn By:	RMG



K.P. Kauffman Company, Inc.  
1675 Broadway, Suite 2800  
Denver CO, 80202

**K.P. Kauffman Company, Inc.**  
**J. E. Kirkmeyer #3 “Spill”**  
SENW, Sec 30, T1N, R67W; Weld County, Colorado

**Figure #3**  
Government Map  
CLEAR Weld County; Yellow – North Glenn





LEGEND



SOIL SCREEN AREA  
150' X 150'



0.0 Specific PID Readings

Date:	July 2022
Designed By:	K.P. Kauffman Co.
Drawn By:	RMG



K.P. Kauffman Company, Inc.  
1675 Broadway, Suite 2800  
Denver CO, 80202

**K.P. Kauffman Company, Inc.**  
**J. E. Kirkmeyer #3 “Spill”**  
SENW, Sec 30, T1N, R67W; Weld County, Colorado

**Figure #4**  
PID Sample Screenings sites