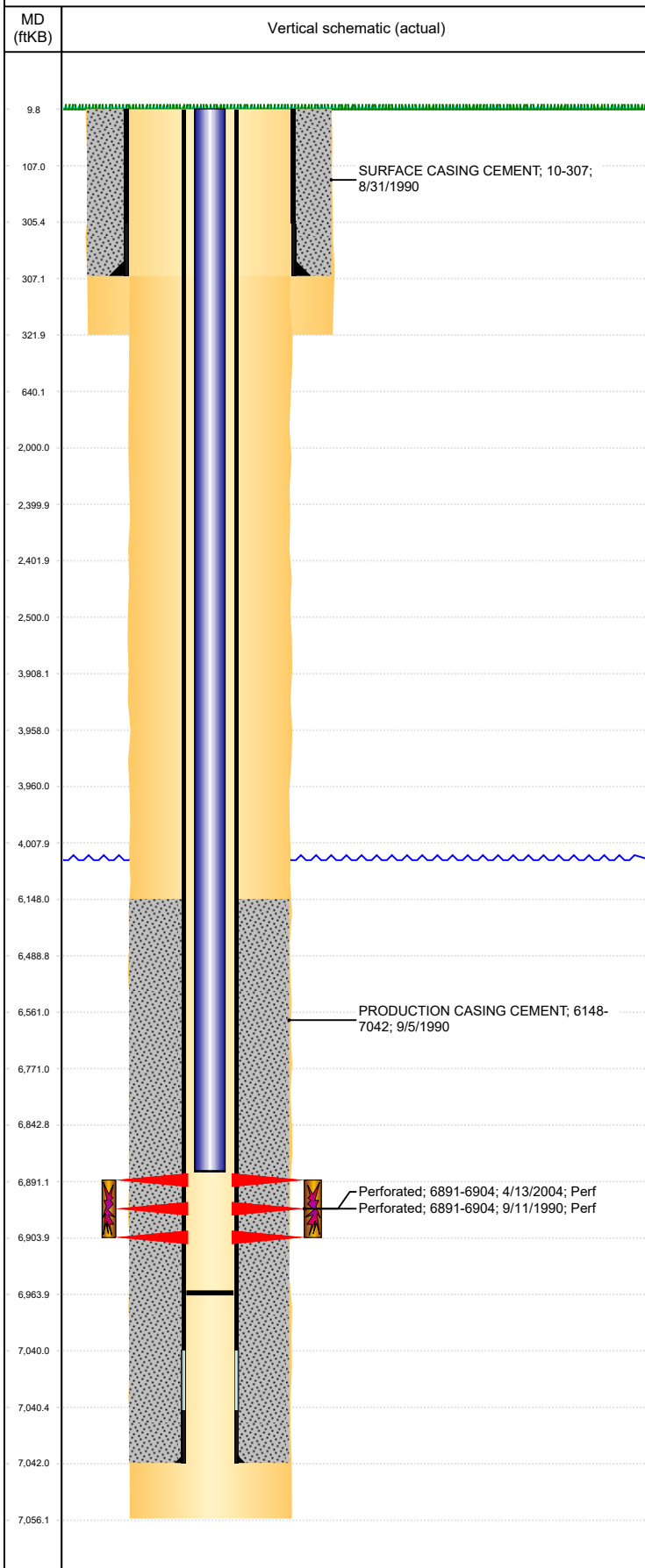




P&A Wellbore For State

Well Name: LINDSAY C33-15

Land, Original Hole, 7/13/2022 8:40:52 AM



Well Header

Surface UWI 0512314713	Business Unit Rockies	Gov Auth Dist	Prod Tree Loc Land
Orig. KB to Gnd (ft) 10.00	Original Spud Date 8/31/1990	Abandon Date	Well Sub-Status PR
High... N			

Comment

TD DISCREPANCY: 7050' & 7056'. STATE SHOWS PRODUCED FROM NIOBRARA/CODELL BUT HAVE NO RECORD OF NIOBRARA BEING COMPLETED. STATE SHOWS SHUT IN MAY 2017. FIELD OPERATIONS NOTICE - FLOWLINES ABANDONED PER RULE 1103, RCVD 6/28/17.

Surface Location (Congressional)

Qtr 3 SE	Qtr 4 NE	Section 33	Twnshp 4	Twnshp... N	Range 64	Rng E/... W	Latitude (°) 40.27078299 8	Longitude (°) -104.548872455
-------------	-------------	---------------	-------------	----------------	-------------	----------------	----------------------------------	---------------------------------

Wellbore Sections

Section Des	Hole Size (in)	Act Top (ftKB)	Act Btm (ftKB)
SURFACE	12 1/4	10.0	322.0
PRODUCTION	7 7/8	307.0	7,056.0

Casing Strings

Csg Des	Run Date	OD (in)	Wt/Len (lb/ft)	Grade	Top Depth (MD) (ftKB)	Set Depth (MD) (ftKB)
Surface	8/31/1990	8 5/8	24.00		10	307
Production Casing	9/5/1990	2 7/8	6.50	N-80	10	7042

Cement

Des	Start Date	Top (ftKB)	Btm (ftKB)
SURFACE CASING CEMENT	8/31/1990	10.0	307.0
PRODUCTION CASING CEMENT	9/5/1990	6,148.0	7,042.0

Zone Statuses

Zone Name	Status Date	Status	Fluid Type	Job	Prod Method
CODELL	9/18/1990	PR		DRILLING/COMPLETION - ORIGINAL, 8/31/1990...	Flowing
CODELL	4/20/2004	PR		RE-FRAC, 4/9/2004 00:00	Flowing

Perforation Data

Linked Zone	Explosive Type	Entered Shot Total	Top (ftKB)	Btm (ftKB)	Date
CODELL, Original Hole		20	6,891.0	6,904.0	9/11/1990
CODELL, Original Hole		52	6,891.0	6,904.0	4/13/2004

Stimulation Intervals

Zone	Start Date	Top (ftKB)	Btm (ftKB)
CODELL, Original Hole	9/12/1990	6,891.0	6,904.0
CODELL, Original Hole	4/19/2004	6,891.0	6,904.0

Other In Hole

Run Date	Des	Make	OD (in)	Top (ftKB)	Btm (ftKB)

Logs

Date	Type	Depth Top (MD) (ftKB)	Btm (ftKB)
9/4/1990	INDUCTION	306	7,056.0
9/10/1990	CEMENT BOND	6,050	6,953.0

Plug Back Total Depths

Date	Type	Com	PBTD (ftKB)
9/10/1990	FILL	DEPTH LOGGER ON CBL	6,958
4/12/2004	FILL	RETAG	6,964