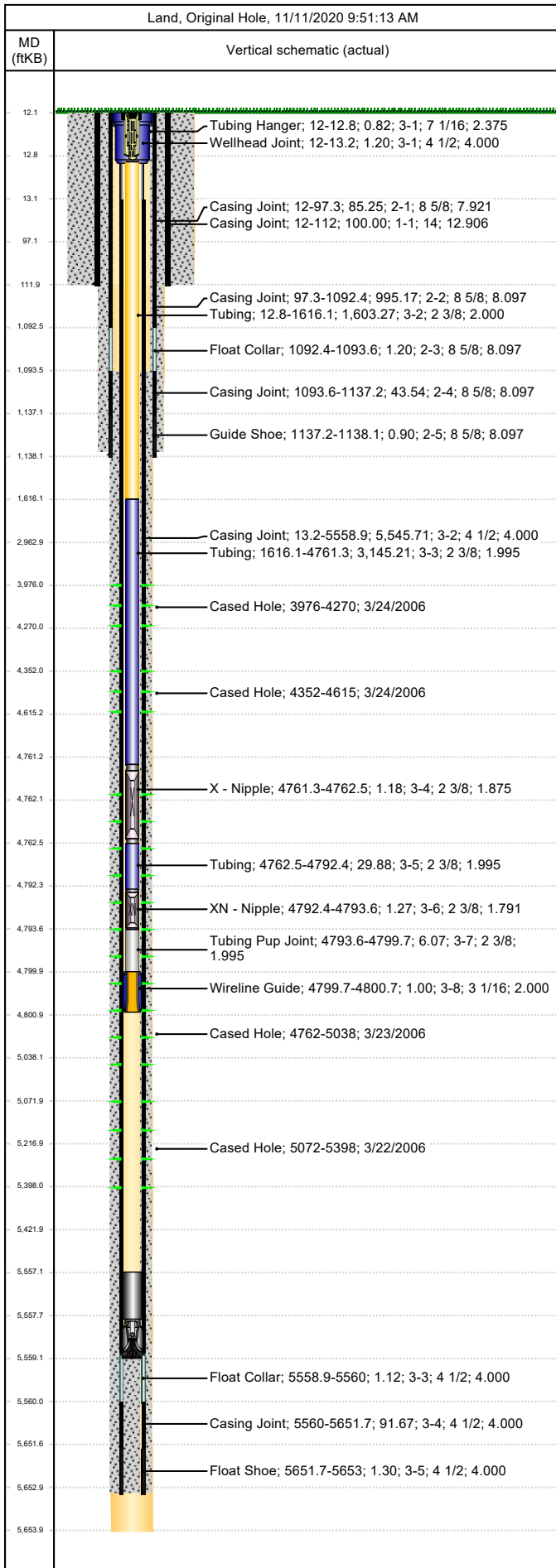




Wellbore Schematic

Well Name Skinner Ridge 698-28-01	Lease Chevron USA	Field Name Skinner Ridge	Business Unit Mid-Continent
--------------------------------------	----------------------	-----------------------------	--------------------------------



Job Details						
Job Category			Start Date		Rig/Unit End Date	
Major Rig Work Over (MRWO)			7/21/2016		7/26/2016	
Casing Strings						
Csg Des	OD (in)	Wt/Len (lb/ft)	Grade	Top Thread	Set Depth (MD) (ftKB)	
Conductor	14	112.60	HC Q-125	WELDED	112	
Surface	8 5/8	24.00	J-55	STC	1138.1	
Production Casing	4 1/2	11.60	P-110	LTC	5653	
Tubing Strings						
Tubing - Production set at 4,800.7ftKB on 7/25/2016 18:00						
Tubing Description		Run Date		String Length (ft)	Set Depth (MD) (ftKB)	
Tubing - Production		7/25/2016		4,788.70	4,800.7	
Item Des	Jts	OD (in)	Wt (lb/ft)	Grade	Len (ft)	Btm (ftKB)
Tubing Hanger	1	7 1/16			0.82	12.8
Tubing	51	2 3/8	4.70	N-80	1,603.27	1,616.1
Tubing	101	2 3/8	4.70	L-80	3,145.21	4,761.3
X - Nipple	1	2 3/8			1.18	4,762.5
Tubing	2	2 3/8	4.70	L-80	29.88	4,792.4
XN - Nipple	1	2 3/8			1.27	4,793.6
Tubing Pup Joint	1	2 3/8	4.70	L-80	6.07	4,799.7
Wireline Guide	1	3 1/16			1.00	4,800.7
Perforations						
Date	Top (ftKB)	Btm (ftKB)	Shot Dens (shots/ft)	Entered Shot Total	Linked Zone	
3/24/2006	3,976.0	4,270.0	2.0	26	Mesa Verde - WMFK - Williams Fork, Original Hole	
3/24/2006	4,352.0	4,615.0	2.0	26	Mesa Verde - WMFK - Williams Fork, Original Hole	
3/23/2006	4,762.0	5,038.0	2.0	22	Mesa Verde - WMFK - Williams Fork, Original Hole	
3/22/2006	5,072.0	5,398.0	2.0	20	Mesa Verde - WMFK - Cameo Coal, Original Hole	
Other Strings						
Run Date	Pull Date	Set Depth (ftKB)	Com			
Other In Hole						
Des	Top (ftKB)	Btm (ftKB)	Run Date	Pull Date	Com	
Plunger	4,985.9	4,986.7	12/11/2008	8/5/2011		
Bumper Spring	4,986.7	4,987.9	12/11/2008	7/22/2016		
Pumped Off Bit-sub	5,557.0	5,557.8	5/9/2006			
Mill	5,557.8	5,559.0	5/9/2006			