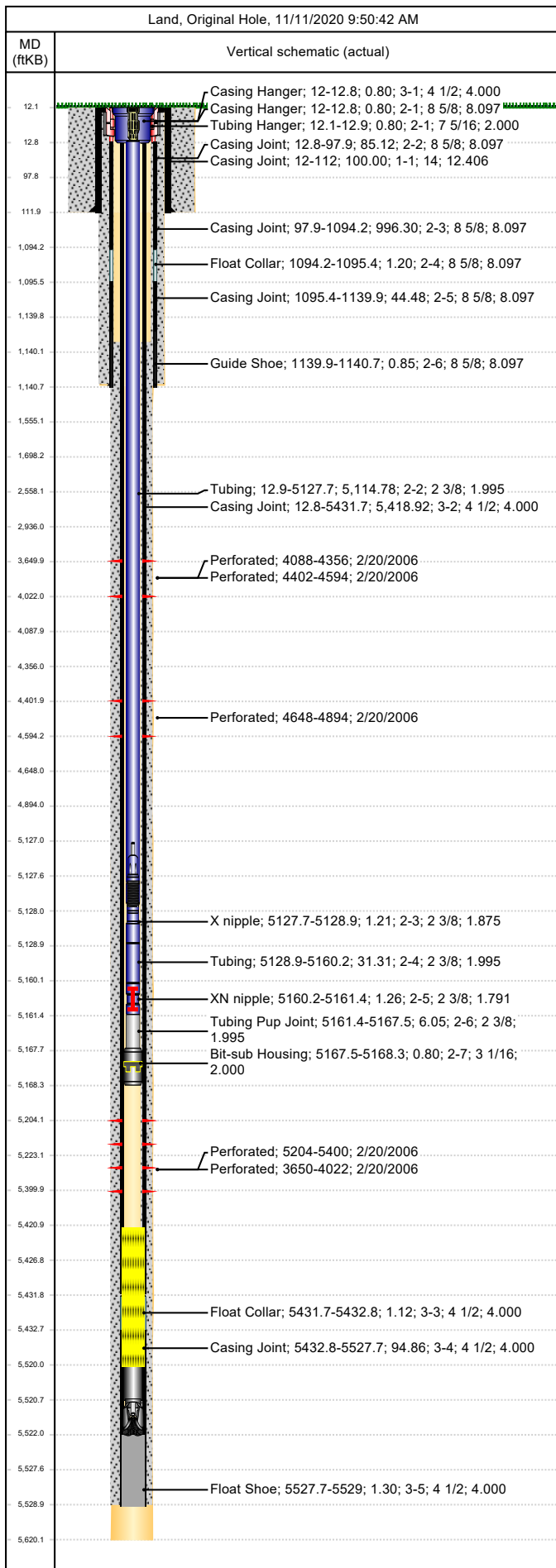




# Wellbore Schematic

Well Name Skinner Ridge 698-27-01	Lease Chevron USA	Field Name Skinner Ridge	Business Unit Mid-Continent
--------------------------------------	----------------------	-----------------------------	--------------------------------



Job Details						
Job Category			Start Date		Rig/Unit End Date	
Well Services			2/12/2015		2/12/2015	
Casing Strings						
Csg Des	OD (in)	Wt/Len (lb/ft)	Grade	Top Thread	Set Depth (MD) (ftKB)	
Conductor	14	112.60	HC Q-125	WELDED	112	
Surface	8 5/8	24.00	J-55	STC	1140.8	
Production Casing	4 1/2	11.60	P-110	LTC	5529	
Tubing Strings						
Tubing - Production set at 5,168.3ftKB on 8/11/2008 12:00						
Tubing Description		Run Date		String Length (ft)	Set Depth (MD) (ftKB)	
Tubing - Production		8/11/2008		5,156.21	5,168.3	
Item Des	Jts	OD (in)	Wt (lb/ft)	Grade	Len (ft)	Btm (ftKB)
Tubing Hanger		7 5/16	4.60	C-75	0.80	12.9
Tubing	164	2 3/8	4.70	L-80	5,114.78	5,127.7
X nipple		2 3/8			1.21	5,128.9
Tubing	1	2 3/8	4.70	L-80	31.31	5,160.2
XN nipple		2 3/8			1.26	5,161.5
Tubing Pup Joint		2 3/8	4.70	L-80	6.05	5,167.5
Bit-sub Housing		3 1/16			0.80	5,168.3
Tubing Landed @						5,168.3
KBTH						5,168.3
Perforations						
Date	Top (ftKB)	Btm (ftKB)	Shot Dens (shots/ft)	Entered Shot Total	Linked Zone	
2/20/2006	3,650.0	4,022.0			Mesa Verde - WMFK - Williams Fork, Original Hole	
2/20/2006	4,088.0	4,356.0			Mesa Verde - WMFK - Williams Fork, Original Hole	
2/20/2006	4,402.0	4,594.0			Mesa Verde - WMFK - Williams Fork, Original Hole	
2/20/2006	4,648.0	4,894.0			Mesa Verde - WMFK - Williams Fork, Original Hole	
2/20/2006	5,204.0	5,400.0			Mesa Verde - WMFK - Cameo Coal, Original Hole	
Other Strings						
Run Date	Pull Date	Set Depth (ftKB)		Com		
Other In Hole						
Des	Top (ftKB)	Btm (ftKB)	Run Date	Pull Date	Com	
Plunger	5,127.0	5,128.0	12/11/2008			
Bumper Spring	5,128.0	5,130.2	12/11/2008	5/5/2010	Note: Spring was in X nipple not XN	
Fill (Sand / Mud / Debris)	5,421.0	5,520.0	2/12/2015			
Pumped Off Bit-sub	5,520.0	5,520.7	8/14/2008			
Mill	5,520.7	5,522.0	8/14/2008		Pump off bit sub & 3 3/4" bit. FN: 3 1/16" X 1'.	
PBTD	5,522.0	5,529.0	8/14/2008			