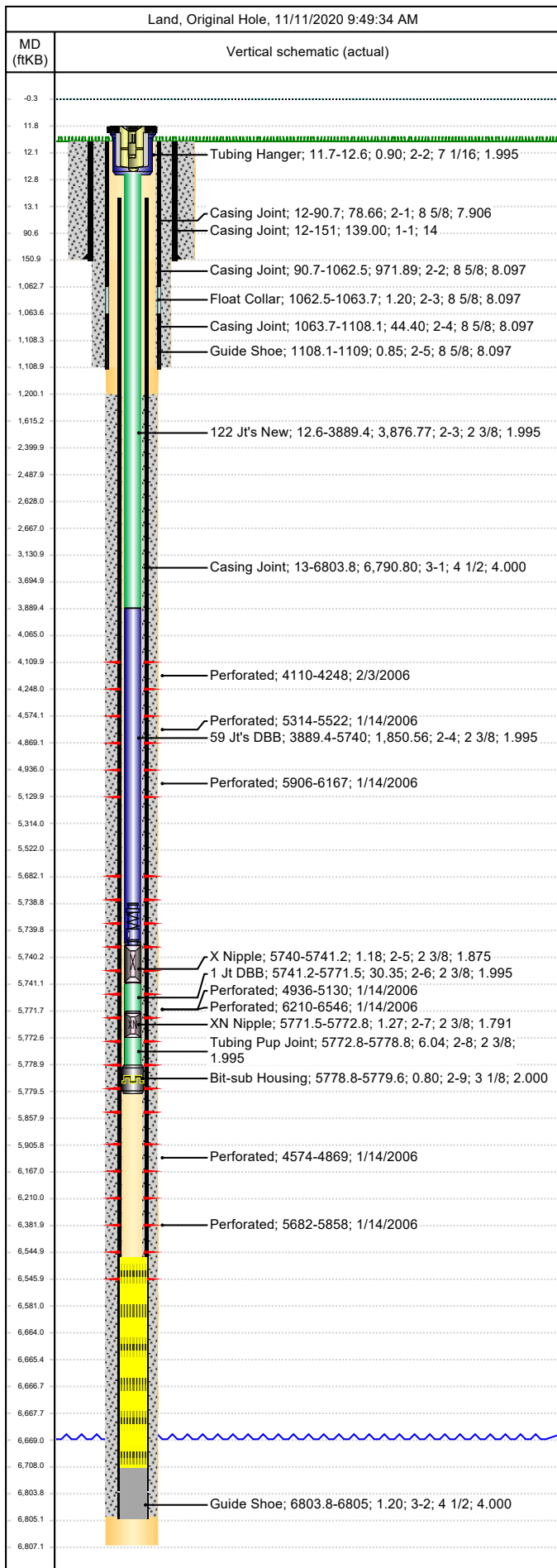




Wellbore Schematic

Well Name Skinner Ridge 698-12-03	Lease Chevron USA	Field Name Skinner Ridge	Business Unit Mid-Continent
--------------------------------------	----------------------	-----------------------------	--------------------------------



Job Details							
Job Category				Start Date		Rig/Unit End Date	
Casing Strings							
Csg Des	OD (in)	Wt/Len (lb/ft)	Grade	Top Thread	Set Depth (MD) (ftKB)		
Conductor	14				151		
Surface	8 5/8	24.00	J-55	STC	1109		
Production Casing	4 1/2	11.60	P-110	8RD	6805		
Tubing Strings							
COPY Tubing - Production set at 5,779.6ftKB on 3/27/2013 12:00							
Tubing Description			Run Date		String Length (ft)		Set Depth (MD) (ftKB)
COPY Tubing - Production			3/27/2013		5,779.87		5,779.6
Item Des	Jts	OD (in)	Wt (lb/ft)	Grade	Len (ft)	Btm (ftKB)	
KBGL		0.0			12.00	11.8	
Tubing Hanger		7 1/16			0.90	12.6	
122 Jt's New	122	2 3/8	4.70	L-80	3,876.77	3,889.4	
59 Jt's DBB	59	2 3/8	4.70	L-80	1,850.56	5,740.0	
X Nipple		2 3/8			1.18	5,741.2	
1 Jt DBB	1	2 3/8	4.70	L-80	30.35	5,771.5	
XN Nipple		2 3/8			1.27	5,772.8	
Tubing Pup Joint		2 3/8	4.70	N80	6.04	5,778.8	
Bit-sub Housing		3 1/8			0.80	5,779.6	
Tubing Landed @						5,779.6	
Perforations							
Date	Top (ftKB)	Btm (ftKB)	Shot Dens (shots/ft)	Entered Shot Total	Linked Zone		
2/3/2006	4,110.0	4,248.0			Mesa Verde - WMFK - Williams Fork, Original Hole		
1/14/2006	4,574.0	4,869.0			Mesa Verde - WMFK - Williams Fork, Original Hole		
1/14/2006	4,936.0	5,130.0			Mesa Verde - WMFK - Williams Fork, Original Hole		
1/14/2006	5,314.0	5,522.0			Mesa Verde - WMFK - Williams Fork, Original Hole		
1/14/2006	5,682.0	5,858.0			Mesa Verde - WMFK - Williams Fork, Original Hole		
1/14/2006	5,906.0	6,167.0			Mesa Verde - WMFK - Williams Fork, Original Hole		
1/14/2006	6,210.0	6,546.0			Mesa Verde - WMFK - Cameo Coal, Original Hole		
Other Strings							
Run Date	Pull Date	Set Depth (ftKB)	Com				
Other In Hole							
Des	Top (ftKB)	Btm (ftKB)	Run Date	Pull Date	Com		
Fish (Tbg)	5,320.0	5,790.0	3/1/2006	3/25/2013			
Fill, 3/7/2013	5,600.0	5,790.0	3/7/2013	3/26/2013			
Fish/Tbg cut	5,600.0	5,790.0	3/25/2013	3/26/2013			
Bumper Spring	5,738.8	5,740.0	7/1/2013				
Fill, 3/7/2013	5,790.0	5,838.0	3/7/2013	3/27/2013			
Fill, 2/29/2012	5,838.0	6,706.0	2/29/2012	3/27/2013			
Fill (Sand / Mud / Debris)	6,545.0	6,708.0	9/3/2020		Sand Tag 2020		
Pumped off Bit-sub, 3/28/2013	6,664.2	6,665.4	3/28/2013				
Mill, 3/28/2013	6,665.4	6,666.6	3/28/2013				
Pumped off Bit-sub, 3/01/2006	6,666.6	6,667.8	3/1/2006				
Mill, 3/01/2006	6,667.8	6,669.0	3/1/2006				
COPY Fill, 3/01/2006	6,669.0	6,708.0	3/1/2006				
PBTD	6,708.0	6,805.0	7/29/2008				