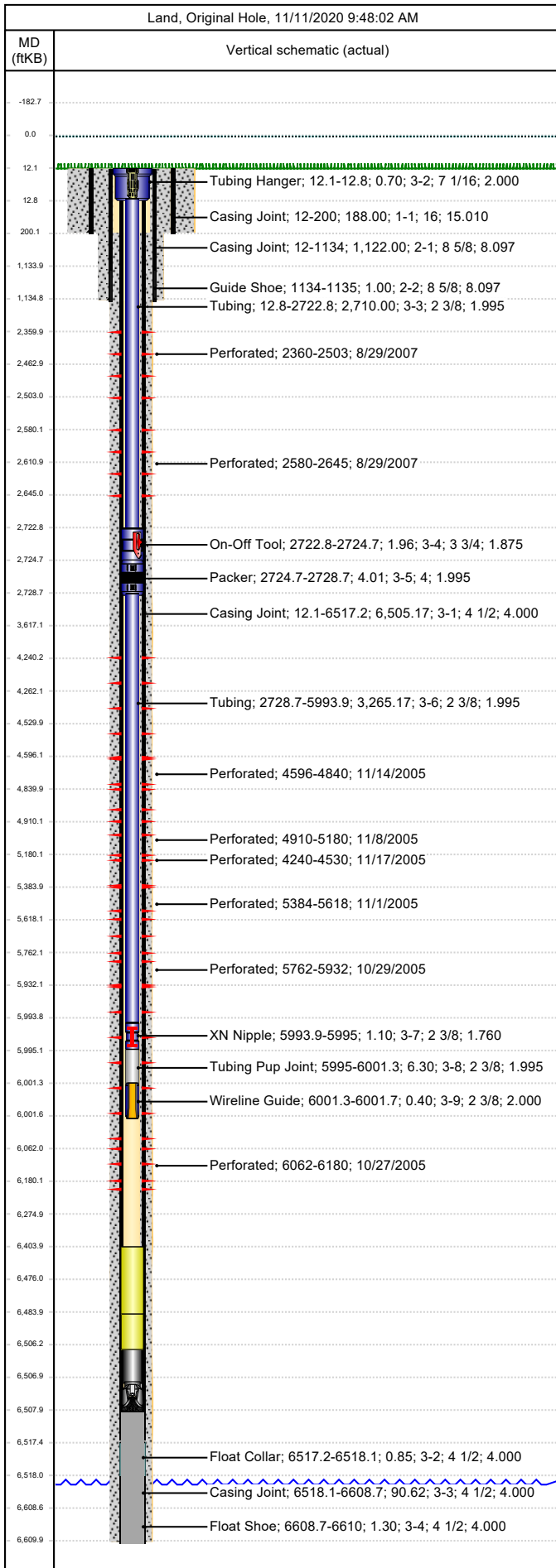




Wellbore Schematic

| | | | |
|--------------------------------------|----------------------|-----------------------------|--------------------------------|
| Well Name Skinner Ridge 698-12-02 | Lease Chevron USA | Field Name Skinner Ridge | Business Unit Mid-Continent |
|--------------------------------------|----------------------|-----------------------------|--------------------------------|



| Job Details | | | | | | |
|-----------------------------------------------------------|------------|------------------|----------------------|--------------------|----------------------------------------------------------------------------|------------|
| Job Category | | | Start Date | | Rig/Unit End Date | |
| Well Services | | | 8/30/2013 | | 8/30/2013 | |
| Casing Strings | | | | | | |
| Csg Des | OD (in) | Wt/Len (lb/ft) | Grade | Top Thread | Set Depth (MD) (ftKB) | |
| Conductor | 16 | 84.00 | J-55 | | 200 | |
| Surface | 8 5/8 | 24.00 | J-55 | 8RD | 1135 | |
| Production Casing | 4 1/2 | 11.60 | P-110 | 8RD | 6610 | |
| Tubing Strings | | | | | | |
| Tubing - Production set at 6,001.7ftKB on 7/22/2008 12:00 | | | | | | |
| Tubing Description | | | Run Date | String Length (ft) | Set Depth (MD) (ftKB) | |
| Tubing - Production | | | 7/22/2008 | 6,001.64 | 6,001.7 | |
| Item Des | Jts | OD (in) | Wt (lb/ft) | Grade | Len (ft) | Btm (ftKB) |
| KBGL | | | | | 12.00 | 12.1 |
| Tubing Hanger | | 7 1/16 | | 4140 | 0.70 | 12.8 |
| Tubing | 87 | 2 3/8 | 4.70 | L-80 | 2,710.00 | 2,722.8 |
| On-Off Tool | | 3 3/4 | | SS | 1.96 | 2,724.7 |
| Packer | | 4 | | P-110 | 4.01 | 2,728.7 |
| Tubing | 106 | 2 3/8 | 4.70 | N-80 | 3,265.17 | 5,993.9 |
| XN Nipple | | 2 3/8 | | SS | 1.10 | 5,995.0 |
| Tubing Pup Joint | | 2 3/8 | 4.70 | L-80 | 6.30 | 6,001.3 |
| Wireline Guide | | 2 3/8 | | N-80 | 0.40 | 6,001.7 |
| Tubing Landed @ | | | | | | 6,001.7 |
| Perforations | | | | | | |
| Date | Top (ftKB) | Btm (ftKB) | Shot Dens (shots/ft) | Entered Shot Total | Linked Zone | |
| 8/29/2007 | 2,360.0 | 2,503.0 | 2.0 | 18 | Wasatch - Wasatch G, Original Hole | |
| 8/29/2007 | 2,580.0 | 2,645.0 | 2.0 | 16 | Wasatch - Fort Union, Original Hole | |
| 11/17/2005 | 4,240.0 | 4,530.0 | 2.0 | 28 | Mesa Verde - WMFK - Williams Fork, Original Hole | |
| 11/14/2005 | 4,596.0 | 4,840.0 | 2.0 | 22 | Mesa Verde - WMFK - Williams Fork, Original Hole | |
| 11/8/2005 | 4,910.0 | 5,180.0 | 2.0 | 26 | Mesa Verde - WMFK - Williams Fork, Original Hole | |
| 11/1/2005 | 5,384.0 | 5,618.0 | 2.0 | 26 | Mesa Verde - WMFK - Williams Fork, Original Hole | |
| 10/29/2005 | 5,762.0 | 5,932.0 | 2.0 | 16 | Mesa Verde - WMFK - Williams Fork, Original Hole | |
| 10/27/2005 | 6,062.0 | 6,180.0 | 2.0 | 16 | Mesa Verde - WMFK - Williams Fork, Original Hole | |
| Other Strings | | | | | | |
| Run Date | Pull Date | Set Depth (ftKB) | Com | | | |
| | | | | | | |
| Other In Hole | | | | | | |
| Des | Top (ftKB) | Btm (ftKB) | Run Date | Pull Date | Com | |
| Bridge Plug - Permanent | 2,750.0 | 2,753.0 | 5/5/2008 | 7/17/2008 | Drill out CIBP | |
| Fill: Obstruction | 5,972.0 | 6,484.0 | 5/23/2013 | 8/30/2013 | Original obstruction not found, no Operator onsite to run plunger assembly | |
| Fill: 8/30/2013 | 6,404.0 | 6,484.0 | 8/30/2013 | | Tag for Fill W/gauge ring 8/30/2013 | |
| Sand Plug | 6,484.0 | 6,506.3 | 3/11/2006 | | | |
| Pumped Off Bit Sub | 6,506.3 | 6,507.0 | 3/9/2006 | | | |
| Bit | 6,507.0 | 6,508.0 | 3/9/2006 | | | |
| PBTD | 6,508.0 | 6,610.0 | 3/9/2006 | | | |