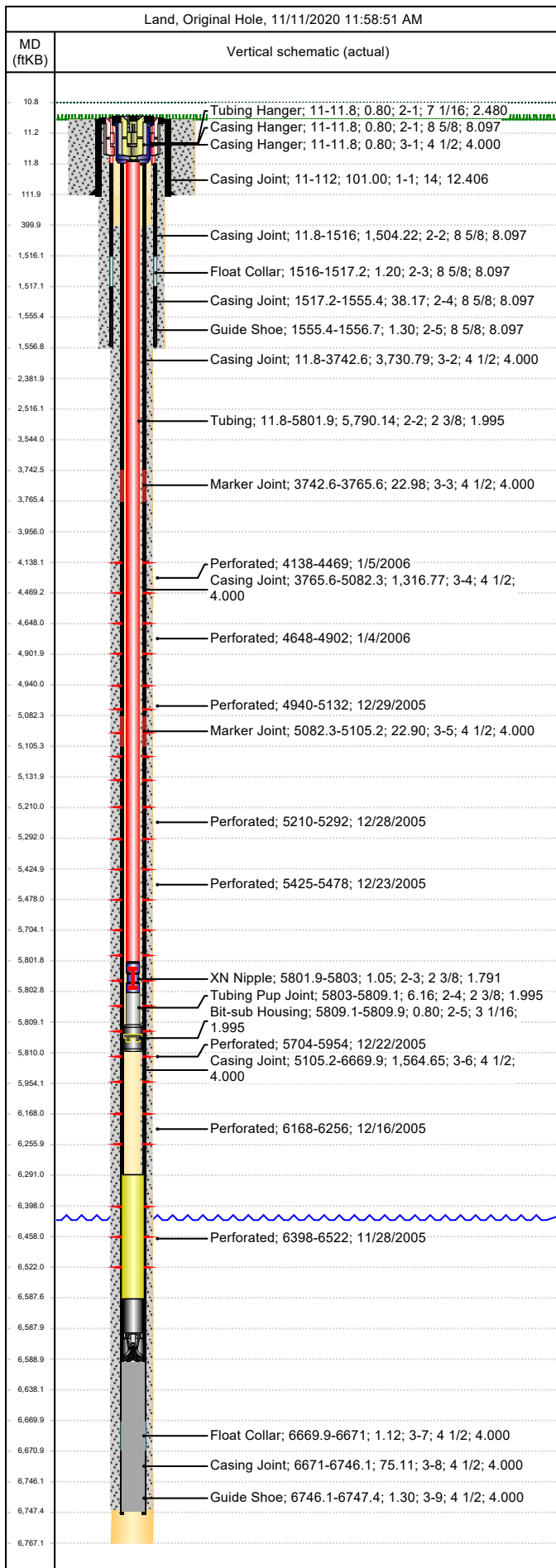




Wellbore Schematic

Well Name Skinner Ridge 698-12-01	Lease Chevron USA	Field Name Skinner Ridge	Business Unit Mid-Continent
--------------------------------------	----------------------	-----------------------------	--------------------------------



Job Details						
Job Category			Start Date		Rig/Unit End Date	
Casing Strings						
Csg Des	OD (in)	Wt/Len (lb/ft)	Grade	Top Thread	Set Depth (MD) (ftKB)	
Conductor	14	112.60	HC Q-125		112	
Surface	8 5/8	24.00	J-55	STC	1556.7	
Production Casing	4 1/2	11.60	P-110	8RD	6747.4	
Tubing Strings						
LONG TUBING set at 5,809.9ftKB on 8/2/2007 00:00						
Tubing Description LONG TUBING		Run Date 8/2/2007		String Length (ft) 5,798.95	Set Depth (MD) (ftKB) 5,809.9	
Item Des	Jts	OD (in)	Wt (lb/ft)	Grade	Len (ft)	Btm (ftKB)
Tubing Hanger		7 1/16			0.80	11.8
Tubing	186	2 3/8	4.70	L-80	5,790.14	5,801.9
XN Nipple		2 3/8			1.05	5,803.0
Tubing Pup Joint		2 3/8	4.70	L-80	6.16	5,809.1
Bit-sub Housing		3 1/16			0.80	5,809.9
Tubing Landed @						5,809.9
Perforations						
Date	Top (ftKB)	Btm (ftKB)	Shot Dens (shots/ft)	Entered Shot Total	Linked Zone	
1/5/2006	4,138.0	4,469.0		28	Mesa Verde - WMFK - Williams Fork, Original Hole	
1/4/2006	4,648.0	4,902.0		26	Mesa Verde - WMFK - Williams Fork, Original Hole	
12/29/2005	4,940.0	5,132.0		22	Mesa Verde - WMFK - Williams Fork, Original Hole	
12/28/2005	5,210.0	5,292.0		20	Mesa Verde - WMFK - Williams Fork, Original Hole	
12/23/2005	5,425.0	5,478.0		16	Mesa Verde - WMFK - Williams Fork, Original Hole	
12/22/2005	5,704.0	5,954.0		24	Mesa Verde - WMFK - Williams Fork, Original Hole	
12/16/2005	6,168.0	6,256.0		16	Mesa Verde - WMFK - Williams Fork, Original Hole	
11/28/2005	6,398.0	6,522.0		16	Mesa Verde - WMFK - Williams Fork, Original Hole	
Other Strings						
Run Date	Pull Date	Set Depth (ftKB)	Com			
Other In Hole						
Des	Top (ftKB)	Btm (ftKB)	Run Date	Pull Date	Com	
Plunger	5,798.0	5,800.0	12/5/2008	5/23/2013		
Bumper Spring	5,800.0	5,802.0	12/5/2008	5/23/2013		
Fill, 5/23/2013, 3/24/2016 tag @ 6305'	6,291.0	6,587.5	5/23/2013		Tag @ 6305', 3/24/2016	
Fish, Pumped Off Bit-sub	6,587.5	6,588.0	11/20/2005			
Mill	6,588.0	6,589.0	11/20/2005			
PBTD	6,589.0	6,747.3	10/5/2008			