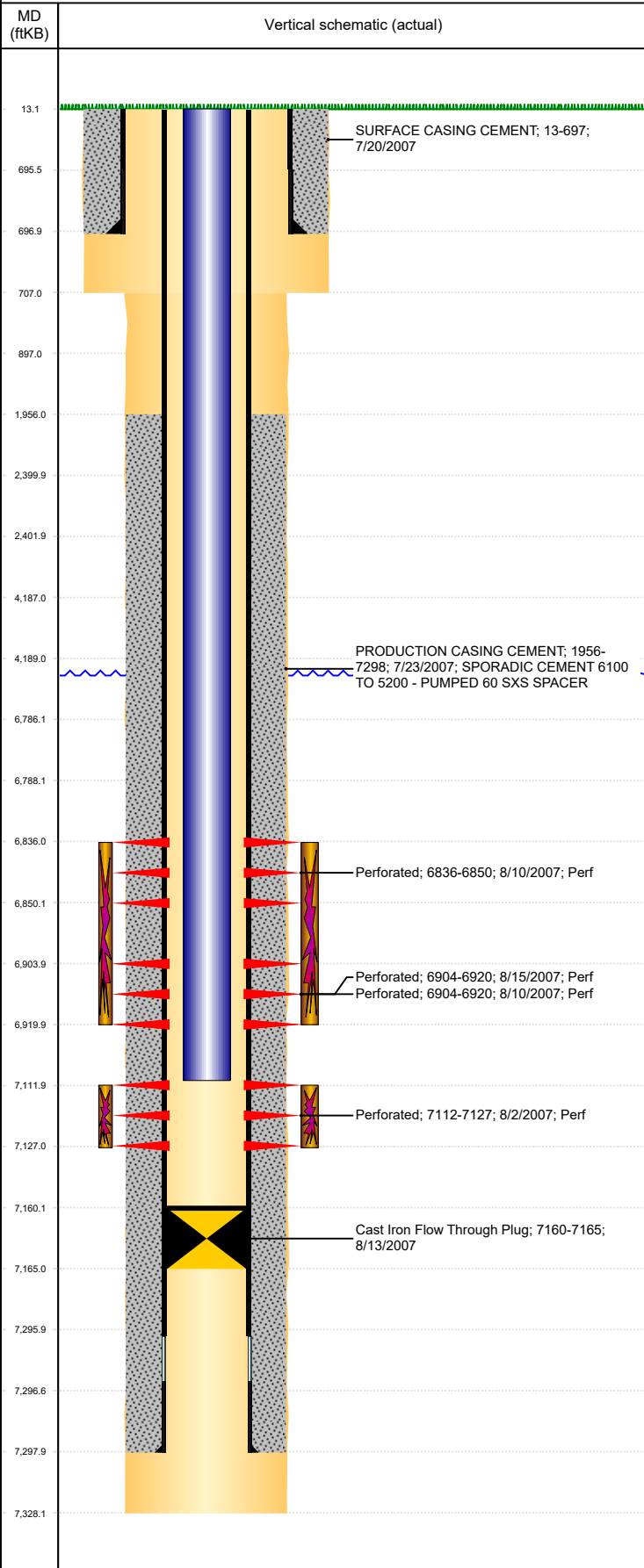




P&A Wellbore For State

Well Name: OCONNELL C31-18

Land, Original Hole, 7/1/2022 10:47:19 AM



Well Header									
Surface UWI 0512326059		Business Unit Rockies		Gov Auth Dist		Prod Tree Loc Land			
Orig. KB to Gnd (ft) 13.00		Original Spud Date 7/20/2007		Abandon Date		Well Sub-Status SI		High...	
Comment DISCREPANCY: DR RPT SURF CSG @ 697/707'; ST RPT SURF CSG @ 707'; SURF HOLE @ 707'									
Surface Location (Congressional)									
Qtr 3 SW	Qtr 4 NE	Section 31	Twonshp 4	Twonsh...	Range 64	Rng E/...	Latitude (°) 40.27216505 4	Longitude (°) -104.593023117	
Wellbore Sections									
Section Des		Hole Size (in)		Act Top (ftKB)		Act Btm (ftKB)			
SURFACE		12 1/4		13.0		707.0			
Production		7 7/8		707.0		7,328.0			
Casing Strings									
Csg Des		Run Date		OD (in)		Wt/Len (lb/ft)		Grade	
Surface		7/20/2007		8 5/8		24.00		J-55	
Production Casing		7/23/2007		4 1/2		11.60		N-80	
Top Depth (MD) (ftKB)		Set Depth (MD) (ftKB)							
13		697							
13		7298							
Cement									
Des		Start Date		Top (ftKB)		Btm (ftKB)			
SURFACE CASING CEMENT		7/20/2007		13.0		697.0			
PRODUCTION CASING CEMENT		7/23/2007		1,956.0		7,298.0			
Zone Statuses									
Zone Name		Status Date		Status		Fluid Type		Job	
CODELL		8/24/2007		PR		Water		DRILLING/COMPLETION - ORIGINAL, 7/20/2007...	
CODELL		4/24/2010		PR		Water		Flowing	
NIOBRARA		11/29/2016		SI					
NIOBRARA		3/22/2017		SI					
Perforation Data									
Linked Zone		Explosive Type		Entered Shot Total		Top (ftKB)		Btm (ftKB)	
NIOBRARA, Original Hole				56		6,836.0		6,850.0	
NIOBRARA, Original Hole				64		6,904.0		6,920.0	
NIOBRARA, Original Hole				64		6,904.0		6,920.0	
CODELL, Original Hole				60		7,112.0		7,127.0	
Date									
8/10/2007									
8/10/2007									
8/15/2007									
8/2/2007									
Stimulation Intervals									
Zone		Start Date		Top (ftKB)		Btm (ftKB)			
NIOBRARA, Original Hole		8/17/2007		6,836.0		6,920.0			
CODELL, Original Hole		8/13/2007		7,112.0		7,127.0			
Other In Hole									
Run Date		Des		Make		OD (in)		Top (ftKB)	
8/13/2007		Cast Iron Flow Through Plug				4		7,160.0	
Btm (ftKB)									
7,165.0									
Logs									
Date		Type				Depth Top (MD) (ftKB)		Btm (ftKB)	
7/23/2007		COMPENSATED DENSITY				2,700		7,305.0	
7/23/2007		INDUCTION				697		7,305.0	
7/30/2007		CEMENT BOND				1,840		7,259.0	
Plug Back Total Depths									
Date		Type		Com				PBSD (ftKB)	
7/30/2007		FILL		DEPTH LOGGER ON CBL				7,266	
11/14/2007		PLUG		PUSH PLUG TO LAND TUBING				7,160	