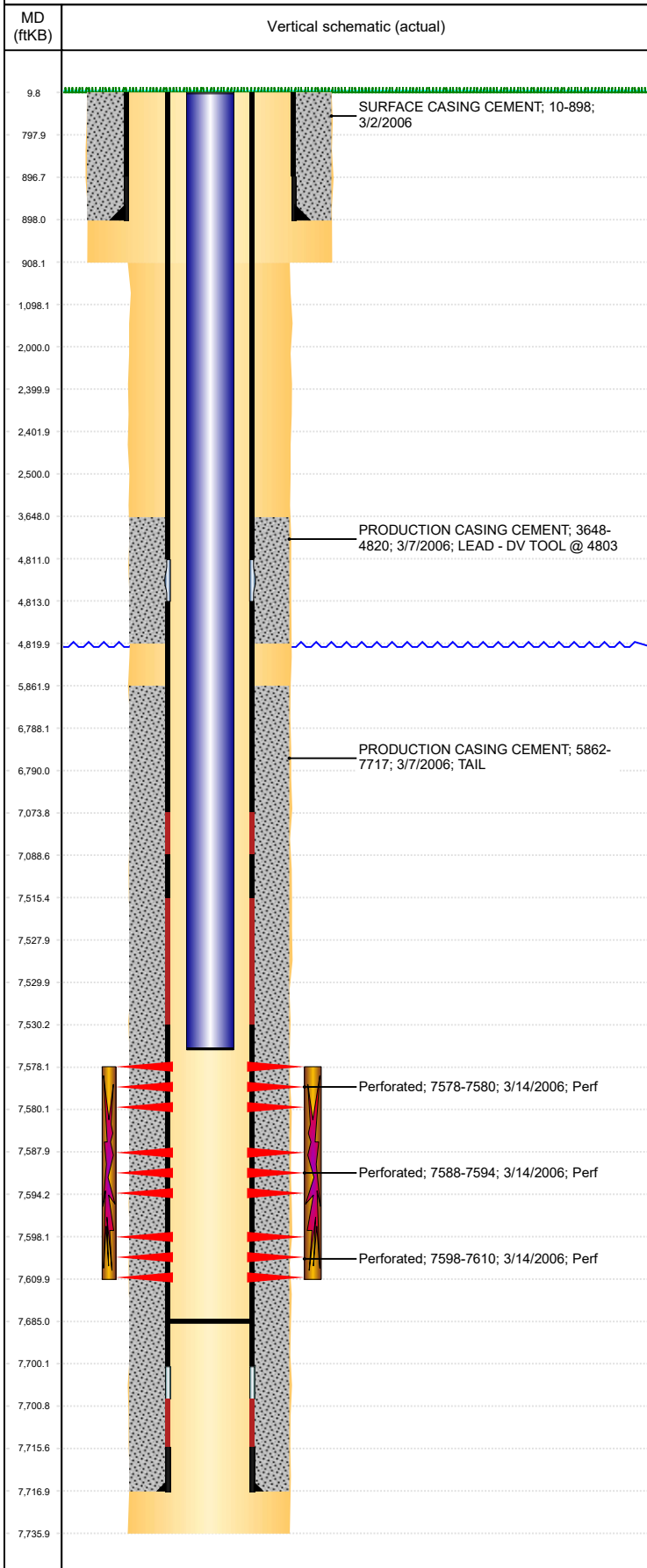




P&A Wellbore For State

Well Name: HP FARMS Y 7-15JI

Land, Original Hole, 7/7/2022 4:09:23 PM



Well Header

Surface UWI 0512323277	Business Unit Rockies	Gov Auth Dist	Prod Tree Loc Land
Orig. KB to Gnd (ft) 10.00	Original Spud Date 3/1/2006	Abandon Date	Well Sub-Status PR
High... N			

Comment

3/13/06 - DV TOOL DRILLED OUT @ 4811.

Surface Location (Congressional)

Qtr 3 SW	Qtr 4 SE	Section 7	Twonshp 2	Twonsh... N	Range 64	Rng E... W	Latitude (°) 40.14713757	Longitude (°) -104.592504835
-------------	-------------	--------------	--------------	----------------	-------------	---------------	-----------------------------	---------------------------------

Wellbore Sections

Section Des	Hole Size (in)	Act Top (ftKB)	Act Btm (ftKB)
SURFACE	12 1/4	10.0	908.0
PRODUCTION	7 7/8	908.0	7,736.0

Casing Strings

Csg Des	Run Date	OD (in)	Wt/Len (lb/ft)	Grade	Top Depth (MD) (ftKB)	Set Depth (MD) (ftKB)
Surface	3/2/2006	8 5/8	24.00	?	10	898
Production Casing	3/7/2006	4 1/2	11.60	M-80	10	7717

Cement

Des	Start Date	Top (ftKB)	Btm (ftKB)
SURFACE CASING CEMENT	3/2/2006	10.0	898.0
PRODUCTION CASING CEMENT	3/7/2006	3,648.0	4,820.0
PRODUCTION CASING CEMENT	3/7/2006	5,862.0	7,717.0

Zone Statuses

Zone Name	Status Date	Status	Fluid Type	Job	Prod Method
J SAND	3/30/2006	PR	Oil		Flowing
J SAND	2/2/2010	PR			Flowing

Perforation Data

Linked Zone	Explosive Type	Entered Shot Total	Top (ftKB)	Btm (ftKB)	Date
J SAND, Original Hole		8	7,578.0	7,580.0	3/14/2006
J SAND, Original Hole		24	7,588.0	7,594.0	3/14/2006
J SAND, Original Hole		48	7,598.0	7,610.0	3/14/2006

Stimulation Intervals

Zone	Start Date	Top (ftKB)	Btm (ftKB)
J SAND, Original Hole	3/22/2006	7,578.0	7,610.0

Other In Hole

Run Date	Des	Make	OD (in)	Top (ftKB)	Btm (ftKB)

Logs

Date	Type	Depth Top (MD) (ftKB)	Btm (ftKB)
3/7/2006	COMPENSATED DENSITY	3,000	7,715.0
3/7/2006	INDUCTION	850	7,735.0
3/14/2006	CEMENT BOND	3,470	7,682.0
7/9/2018	GYRO	10	7,400.0

Plug Back Total Depths

Date	Type	Com	PBTD (ftKB)
3/7/2006	FLOAT COLLAR	TOP OF FLOAT COLLAR	7,700
3/14/2006	FILL	DEPTH LOGGER ON CBL	7,685