

			Centralizers-8071-275-200 Tekco 2 3/4" Adjustable Centralizer	2.73	2.75	25.00
WVFSYNC	18.46					
WVFCAL	18.46					
TEMP	17.33					
WVFS8	16.04					
WVFS7	16.04		SCBLTEKSECT-275 Temp JS (IBUCO04)	9.13	2.75	130.00
WVFS6	16.04		TekCo 2 3/4" 400 Deg. F Sector Tool with Temperature			
WVFS5	16.04					
WVFS4	16.04					
WVFS3	16.04					
WVFS2	16.04					
WVFS1	16.04					
WVF3FT	15.29					
WVF5FT	14.29					
WVFTEMP	10.96					
			Centralizers-8071-275-200 Tekco 2 3/4" Adjustable Centralizer	2.73	2.75	25.00
CCL	7.08		CCL-275tekco (111) Tekco 2 3/4" 450 Deg. F Rare Earth Magnets	1.83	2.75	33.00
GR	3.77		GR-Tek-Co 2 3/4 (0111) Tekco 2 3/4" 400 Deg. F Logging Gamma Ray	3.67	2.75	40.00
			Centralizers-8071-275-200 Tekco 2 3/4" Adjustable Centralizer	2.73	2.75	25.00

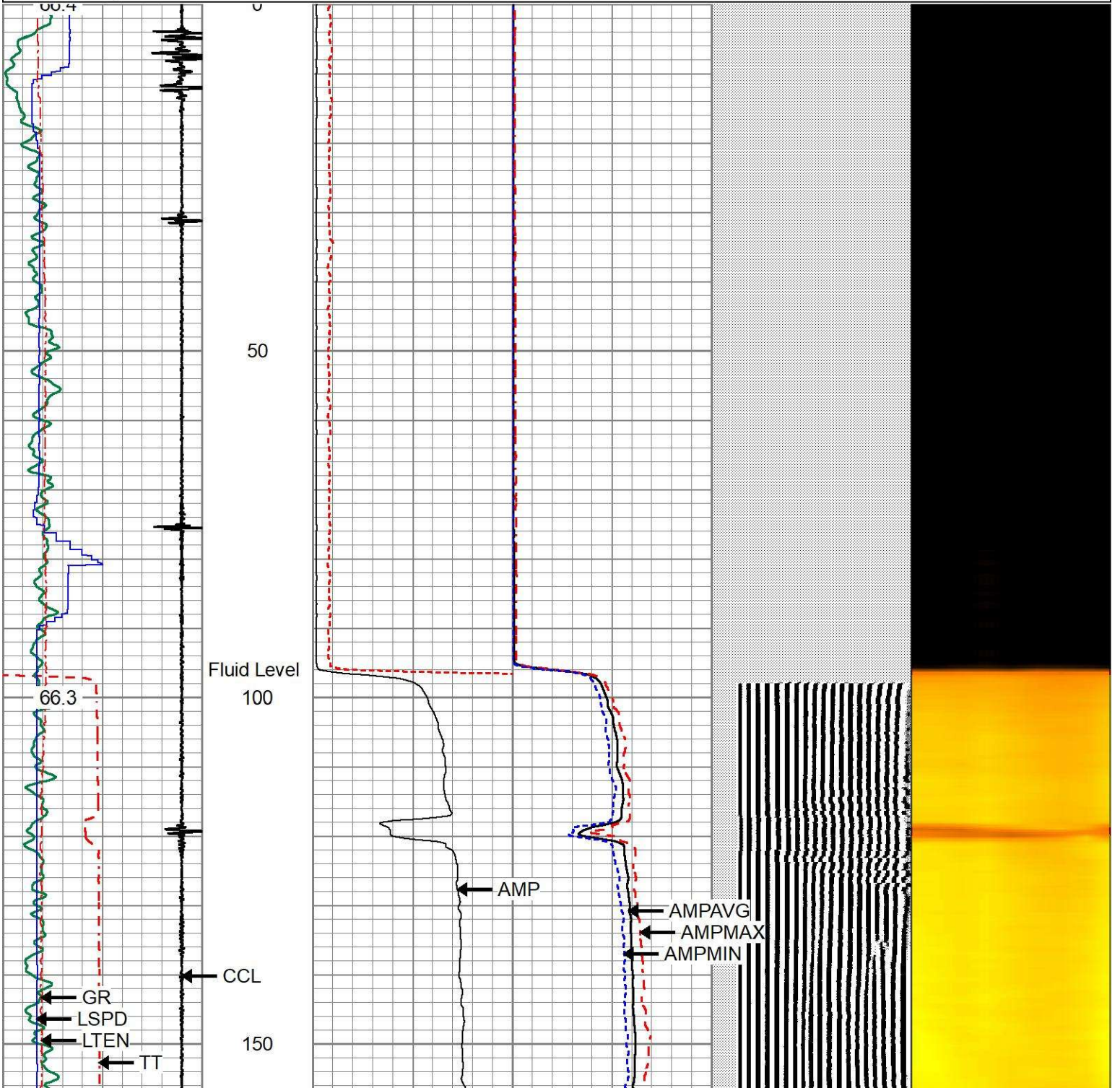
Dataset: oxy_lee 25-6x_0512333287_20220429_scb|; db: field/well/run1/pass6
 Total length: 23.83 ft
 Total weight: 281.31 lb
 O.D.: 2.75 in

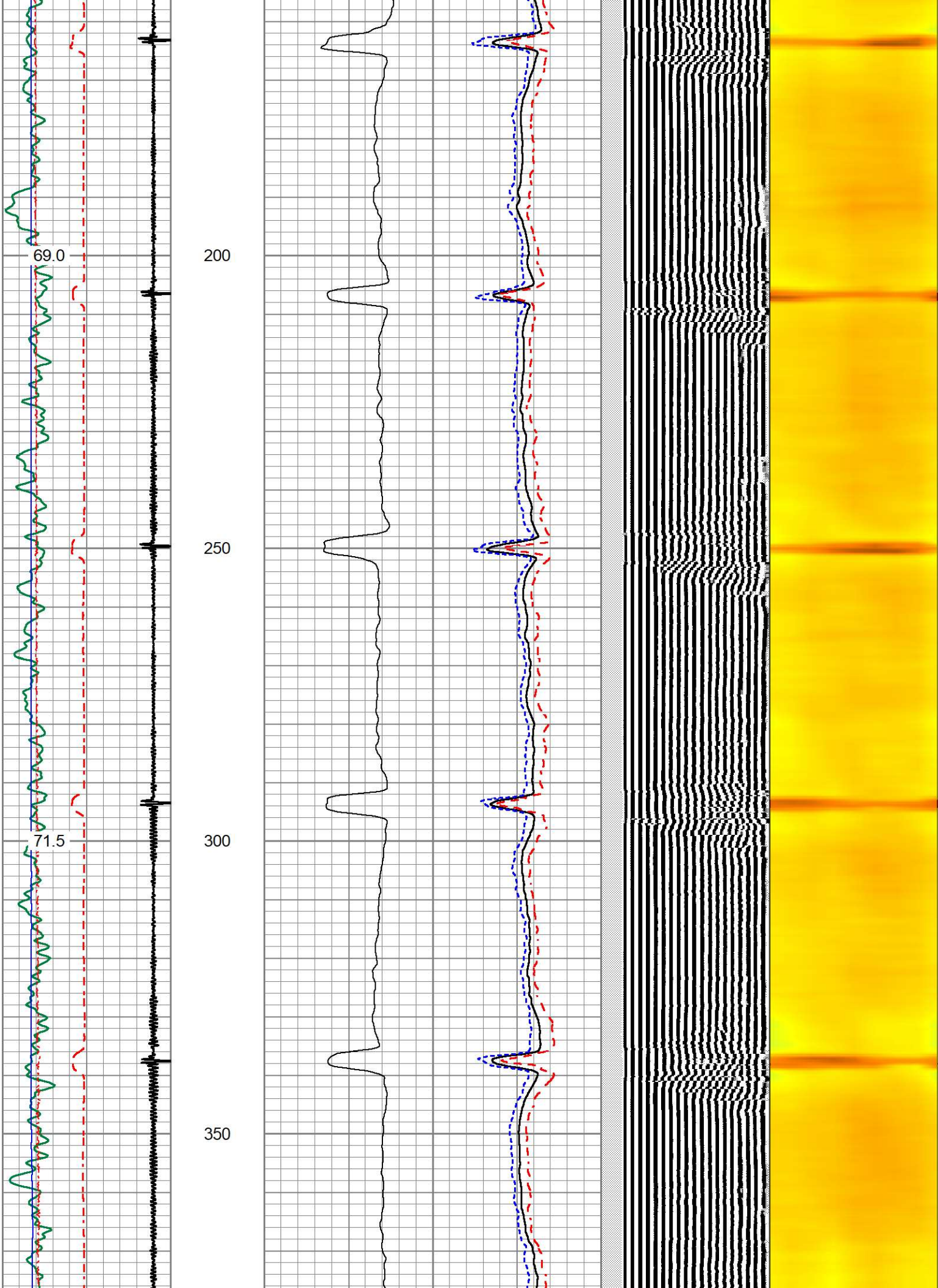


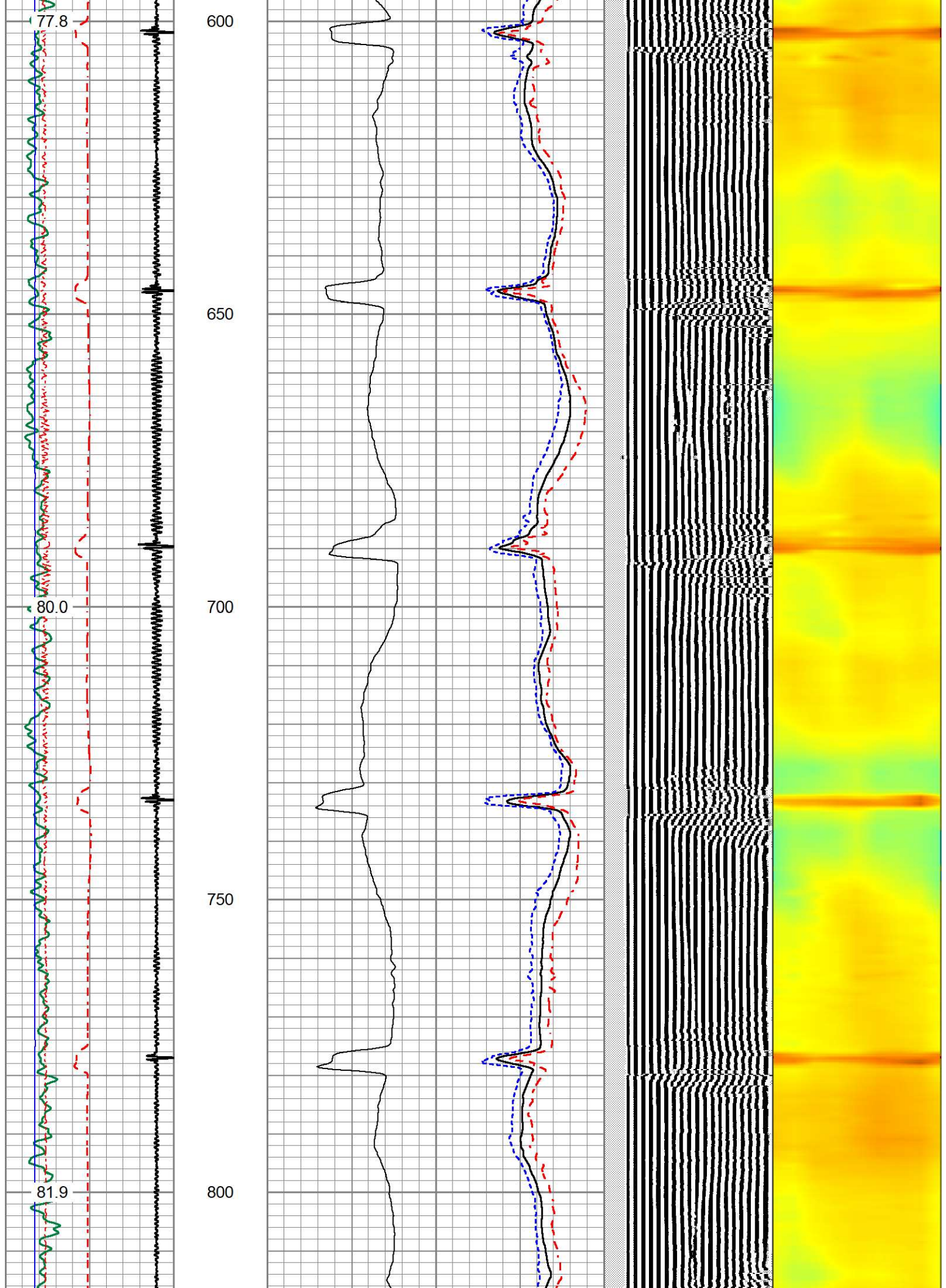
MAIN PASS

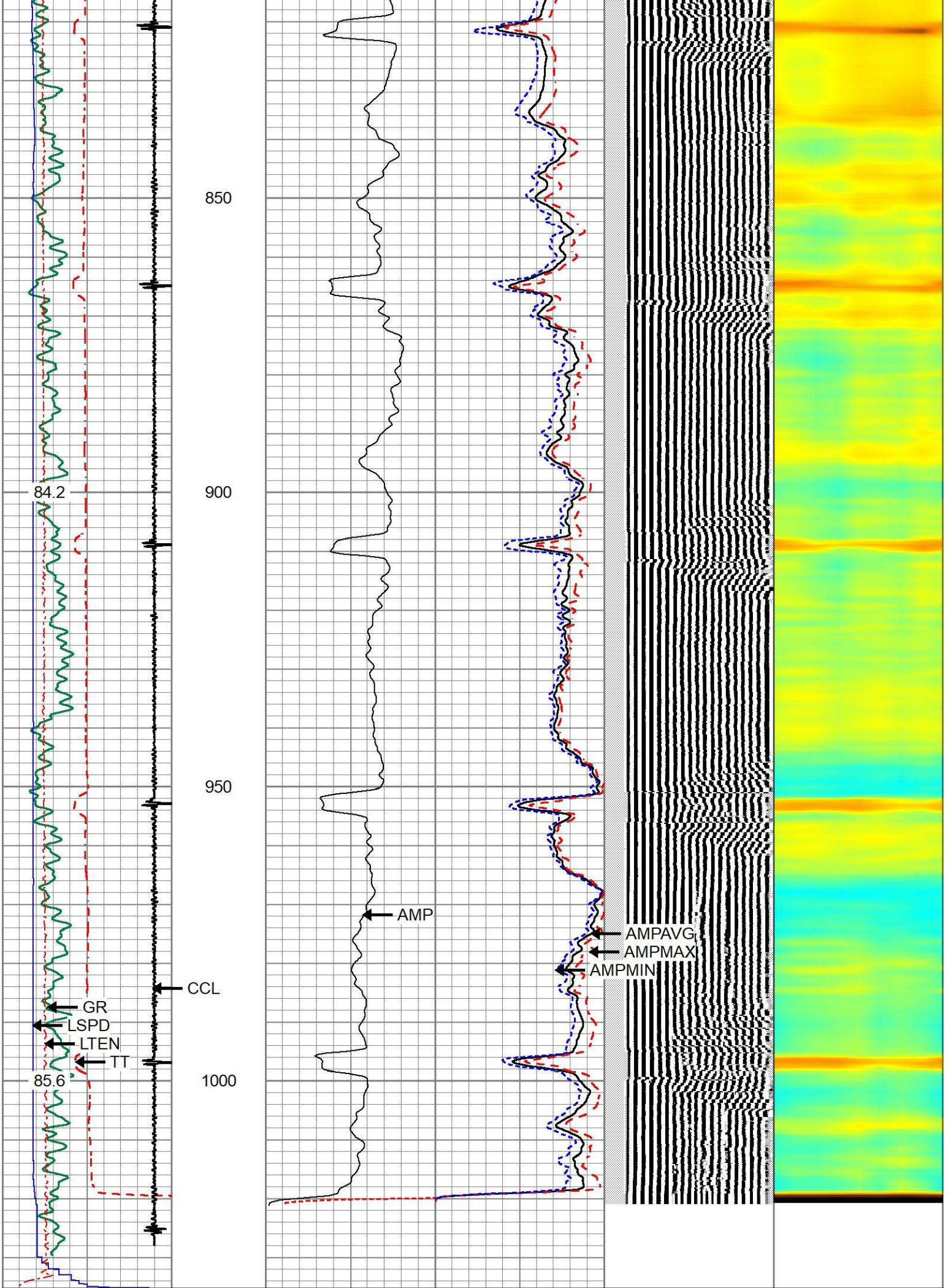
Database File oxy_lee 25-6x_0512333287_20220429_scbl;.db
 Dataset Pathname pass6.1
 Presentation Format 1patriotradii
 Dataset Creation Fri Apr 29 11:43:14 2022
 Charted by Depth in Feet scaled 1:240

270 TT (usec) 170	0 AMP (mV) 100	0 AMPAVG 100	200 VDL (usec) 1200	1 RADIAL MAP 8
0 GR (GAPI) 150	0 3FT X 5 (mV) 20	0 AMPMAX 100		
9 CCL -1		0 AMPMIN 100		
LSPD				
-100 (ft/min) 100				
0 LTEN (lb) 2000				
TEMP				
(degF)				









270	TT (usec)	170
0	GR (GAPI)	150
9	CCL	-1
LSPD		
-100	(ft/min)	100
0	LTEN (lb)	2000
TEMP		
(degF)		

0	AMP (mV)	100	0	AMPAVG	100
0	3FT X 5 (mV)	20	0	AMPMAX	100
0			0	AMPMIN	100

200 VDL (usec) 1200 1 RADIAL MAP 8



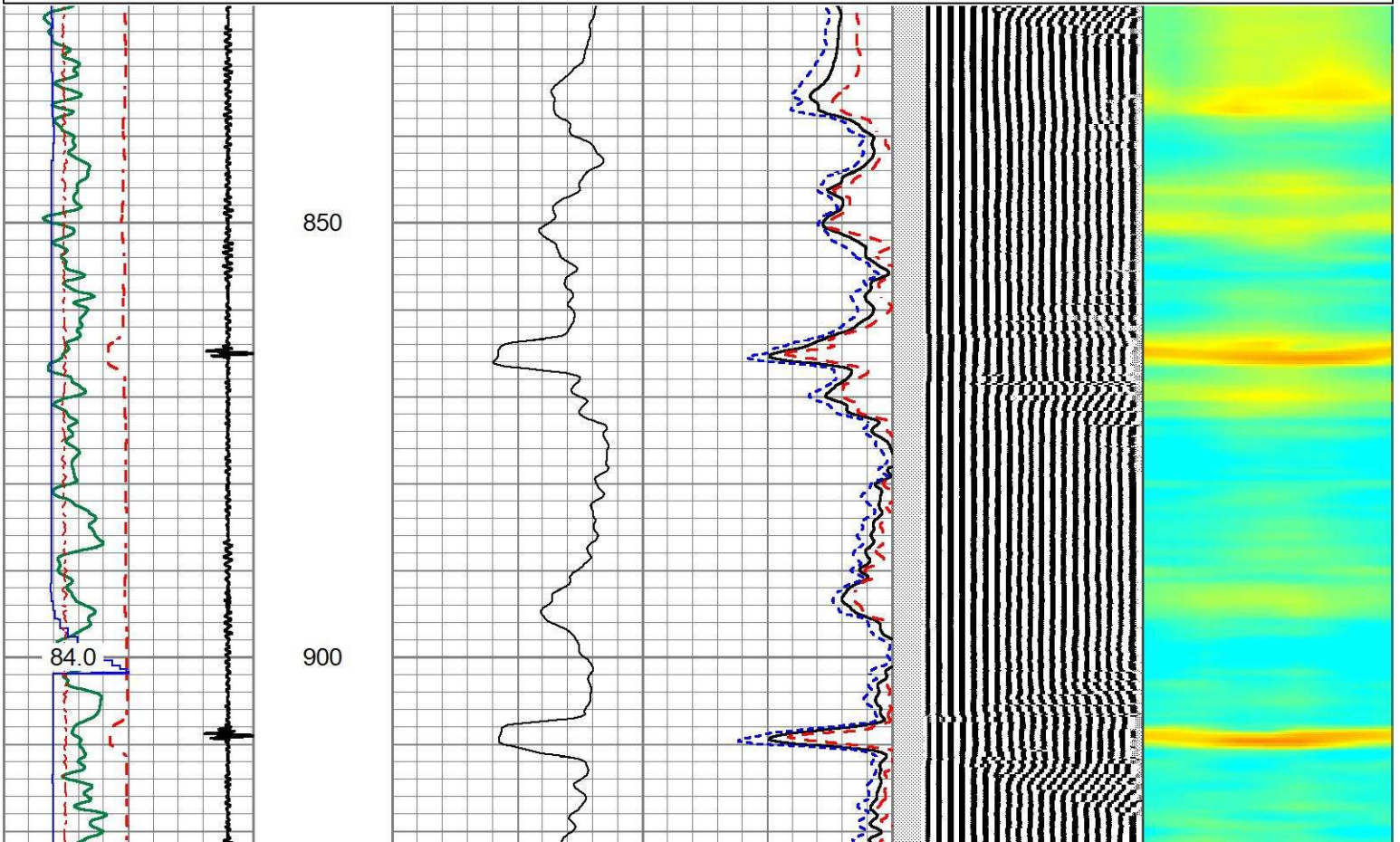
REPEAT PASS

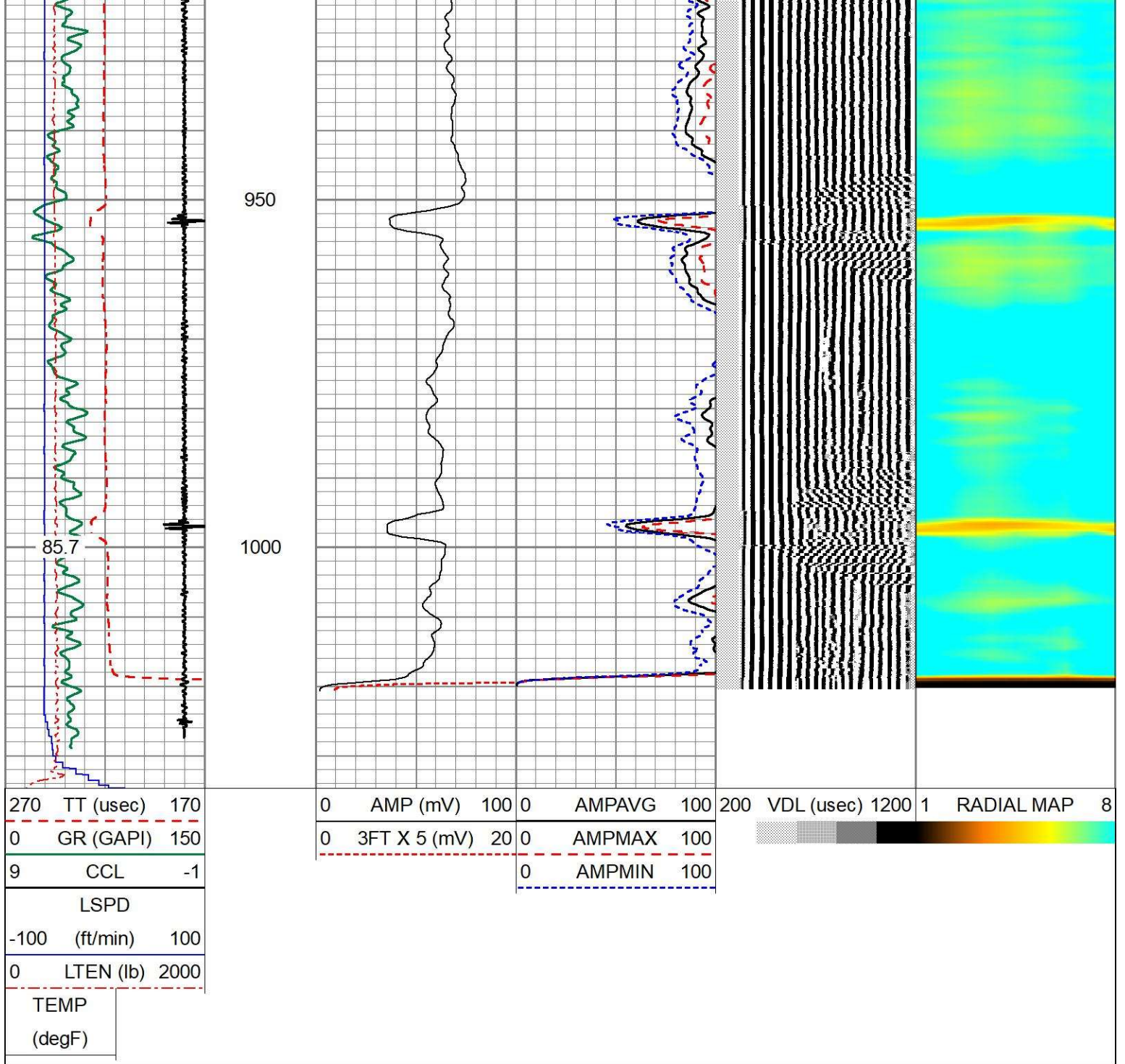
Database File oxy_lee 25-6x_0512333287_20220429_scb1;.db
 Dataset Pathname pass4
 Presentation Format 1patriotradii
 Dataset Creation Fri Apr 29 11:15:56 2022
 Charted by Depth in Feet scaled 1:240

270	TT (usec)	170
0	GR (GAPI)	150
9	CCL	-1
LSPD		
-100	(ft/min)	100
0	LTEN (lb)	2000
TEMP		
(degF)		

0	AMP (mV)	100	0	AMPAVG	100
0	3FT X 5 (mV)	20	0	AMPMAX	100
0			0	AMPMIN	100

200 VDL (usec) 1200 1 RADIAL MAP 8





Calibration Report

Database File oxy_lee 25-6x_0512333287_20220429_scbl;.db
 Dataset Pathname pass6
 Dataset Creation Fri Apr 29 11:20:59 2022

Gamma Ray Calibration Report

Serial Number: 0111
 Tool Model: Tek-Co 2 3/4
 Performed: Thu Oct 7 08:31:10 2021

Calibrator Value: 0.7 GAPI

Background Reading: 0.0 cps
 Calibrator Reading: 1.0 cps

Sensitivity: 0.6700 GAPI/cps

Serial Number: IBUCO04
 Tool Model: 275 Temp JS
 Calibration Casing Diameter: 4.500 in
 Calibration Depth: 891.504 ft

Master Calibration, performed Fri Apr 29 11:13:28 2022:

	Raw (v)		Calibrated (mv)		Results	
	Zero	Cal	Zero	Cal	Gain	Offset
3'	-0.006	1.391	1.500	81.196	57.047	1.833
CAL	-0.006	1.096				
5'	-0.006	1.816	1.500	81.196	43.746	1.750
SUM						
S1	-0.006	1.543	0.000	100.000	64.571	0.369
S2	-0.006	1.579	0.000	100.000	63.093	0.368
S3	-0.006	1.655	0.000	100.000	60.216	0.360
S4	-0.006	1.646	0.000	100.000	60.548	0.366
S5	-0.006	1.611	0.000	100.000	61.846	0.356
S6	-0.006	1.663	0.000	100.000	59.907	0.347
S7	-0.006	1.733	0.000	100.000	57.508	0.339
S8	-0.006	1.565	0.000	100.000	63.674	0.370

Internal Reference Calibration, performed (Not Performed):

	Raw (v)		Calibrated (v)		Results	
	Zero	Cal	Zero	Cal	Gain	Offset
CAL	0.000	0.000	-0.006	1.096	1.000	0.000

Air Zero Calibration, performed Wed Jan 11 14:45:22 2017:

	Raw (v)		Calibrated (v)		Results	
	Zero		Zero		Gain	Offset
3'	0.000		0.000			0.000
5'	0.000		0.000			0.000
SUM						
S1	0.000		0.000			0.000
S2	0.000		0.000			0.000
S3	0.000		0.000			0.000
S4	0.000		0.000			0.000
S5	0.000		0.000			0.000
S6	0.000		0.000			0.000
S7	0.000		0.000			0.000
S8	0.000		0.000			0.000

Temperature Calibration Report

Serial Number: IBUCO04
 Tool Model: 275 Temp JS
 Performed: Thu Jan 5 17:25:52 2017

	Reference	Reading
Low Reference:	0.00 degF	0.00 usec
High Reference:	1.00 degF	1.00 usec
Gain:	0.33	
Offset:	0.00	



Company	OCCIDENTAL OIL & GAS LLC	
Well	LEE 25-6X	
Field	WATTENBERG	
County	WELD	
State	COLORADO	Country USA