

## Rio Blanco County Area, Colorado

### 73—Rentsac channery loam, 5 to 50 percent slopes

#### Map Unit Setting

*National map unit symbol:* jp64  
*Elevation:* 6,000 to 7,600 feet  
*Mean annual precipitation:* 14 to 18 inches  
*Mean annual air temperature:* 42 to 45 degrees F  
*Frost-free period:* 80 to 105 days  
*Farmland classification:* Not prime farmland

#### Map Unit Composition

*Rentsac and similar soils:* 80 percent  
*Minor components:* 20 percent  
*Estimates are based on observations, descriptions, and transects of the mapunit.*

#### Description of Rentsac

##### Setting

*Landform:* Ridges  
*Landform position (three-dimensional):* Upper third of mountainflank  
*Down-slope shape:* Convex, linear  
*Across-slope shape:* Convex, linear  
*Parent material:* Residuum weathered from calcareous sandstone

##### Typical profile

*H1 - 0 to 5 inches:* channery loam  
*H2 - 5 to 16 inches:* extremely channery loam, extremely gravelly sandy loam, very flaggy loam  
*H2 - 5 to 16 inches:* unweathered bedrock  
*H2 - 5 to 16 inches:*  
*H3 - 16 to 20 inches:*

##### Properties and qualities

*Slope:* 5 to 50 percent  
*Depth to restrictive feature:* 10 to 20 inches to lithic bedrock  
*Drainage class:* Well drained  
*Runoff class:* Very high  
*Capacity of the most limiting layer to transmit water (Ksat):* Very low (0.00 in/hr)  
*Depth to water table:* More than 80 inches  
*Frequency of flooding:* None  
*Frequency of ponding:* None  
*Calcium carbonate, maximum content:* 15 percent  
*Maximum salinity:* Nonsaline to slightly saline (0.0 to 4.0 mmhos/cm)  
*Available water supply, 0 to 60 inches:* Very low (about 2.0 inches)

##### Interpretive groups

*Land capability classification (irrigated):* None specified

*Land capability classification (nonirrigated): 7e*  
*Hydrologic Soil Group: D*  
*Ecological site: F048AY448CO - Mountain Pinyon*  
*Hydric soil rating: No*

#### **Minor Components**

##### **Other soils**

*Percent of map unit: 20 percent*  
*Hydric soil rating: No*

## **Data Source Information**

Soil Survey Area: Rio Blanco County Area, Colorado  
Survey Area Data: Version 16, Sep 2, 2021

## Rio Blanco County Area, Colorado

### 70—Redcreek-Rentsac complex, 5 to 30 percent slopes

#### Map Unit Setting

*National map unit symbol:* jp61

*Elevation:* 6,000 to 7,400 feet

*Mean annual precipitation:* 14 to 18 inches

*Mean annual air temperature:* 42 to 45 degrees F

*Frost-free period:* 85 to 105 days

*Farmland classification:* Not prime farmland

#### Map Unit Composition

*Redcreek and similar soils:* 60 percent

*Rentsac and similar soils:* 30 percent

*Minor components:* 10 percent

*Estimates are based on observations, descriptions, and transects of the mapunit.*

#### Description of Redcreek

##### Setting

*Landform:* Mountainsides, ridges

*Landform position (three-dimensional):* Mountainflank

*Down-slope shape:* Linear

*Across-slope shape:* Linear

*Parent material:* Eolian deposits and/or residuum weathered from sandstone

##### Typical profile

*H1 - 0 to 11 inches:* sandy loam

*H2 - 11 to 16 inches:* channery sandy loam

*H3 - 16 to 20 inches:* unweathered bedrock

##### Properties and qualities

*Slope:* 5 to 30 percent

*Depth to restrictive feature:* 10 to 20 inches to lithic bedrock

*Drainage class:* Well drained

*Runoff class:* High

*Capacity of the most limiting layer to transmit water*

*(Ksat):* Moderately low to moderately high (0.06 to 0.20 in/hr)

*Depth to water table:* More than 80 inches

*Frequency of flooding:* None

*Frequency of ponding:* None

*Calcium carbonate, maximum content:* 10 percent

*Maximum salinity:* Nonsaline to very slightly saline (0.0 to 2.0 mmhos/cm)

*Available water supply, 0 to 60 inches:* Very low (about 1.7 inches)

##### Interpretive groups

*Land capability classification (irrigated):* None specified

*Land capability classification (nonirrigated):* 6e

*Hydrologic Soil Group:* D  
*Ecological site:* F048AY448CO - Mountain Pinyon  
*Hydric soil rating:* No

## **Description of Rentsac**

### **Setting**

*Landform:* Mountainsides  
*Landform position (three-dimensional):* Mountainflank  
*Down-slope shape:* Linear  
*Across-slope shape:* Linear  
*Parent material:* Eolian deposits and/or residuum weathered from sandstone

### **Typical profile**

*H1 - 0 to 5 inches:* channery loam  
*H2 - 5 to 16 inches:* extremely channery loam, extremely gravelly sandy loam, very flaggy loam  
*H2 - 5 to 16 inches:* unweathered bedrock  
*H2 - 5 to 16 inches:*  
*H3 - 16 to 20 inches:*

### **Properties and qualities**

*Slope:* 5 to 30 percent  
*Depth to restrictive feature:* 10 to 20 inches to lithic bedrock  
*Drainage class:* Well drained  
*Runoff class:* Very high  
*Capacity of the most limiting layer to transmit water (Ksat):* Very low (0.00 in/hr)  
*Depth to water table:* More than 80 inches  
*Frequency of flooding:* None  
*Frequency of ponding:* None  
*Calcium carbonate, maximum content:* 15 percent  
*Maximum salinity:* Nonsaline to slightly saline (0.0 to 4.0 mmhos/cm)  
*Available water supply, 0 to 60 inches:* Very low (about 2.0 inches)

### **Interpretive groups**

*Land capability classification (irrigated):* None specified  
*Land capability classification (nonirrigated):* 7e  
*Hydrologic Soil Group:* D  
*Ecological site:* F048AY448CO - Mountain Pinyon  
*Hydric soil rating:* No

## **Minor Components**

### **Other soils**

*Percent of map unit:* 10 percent

*Hydric soil rating:* No

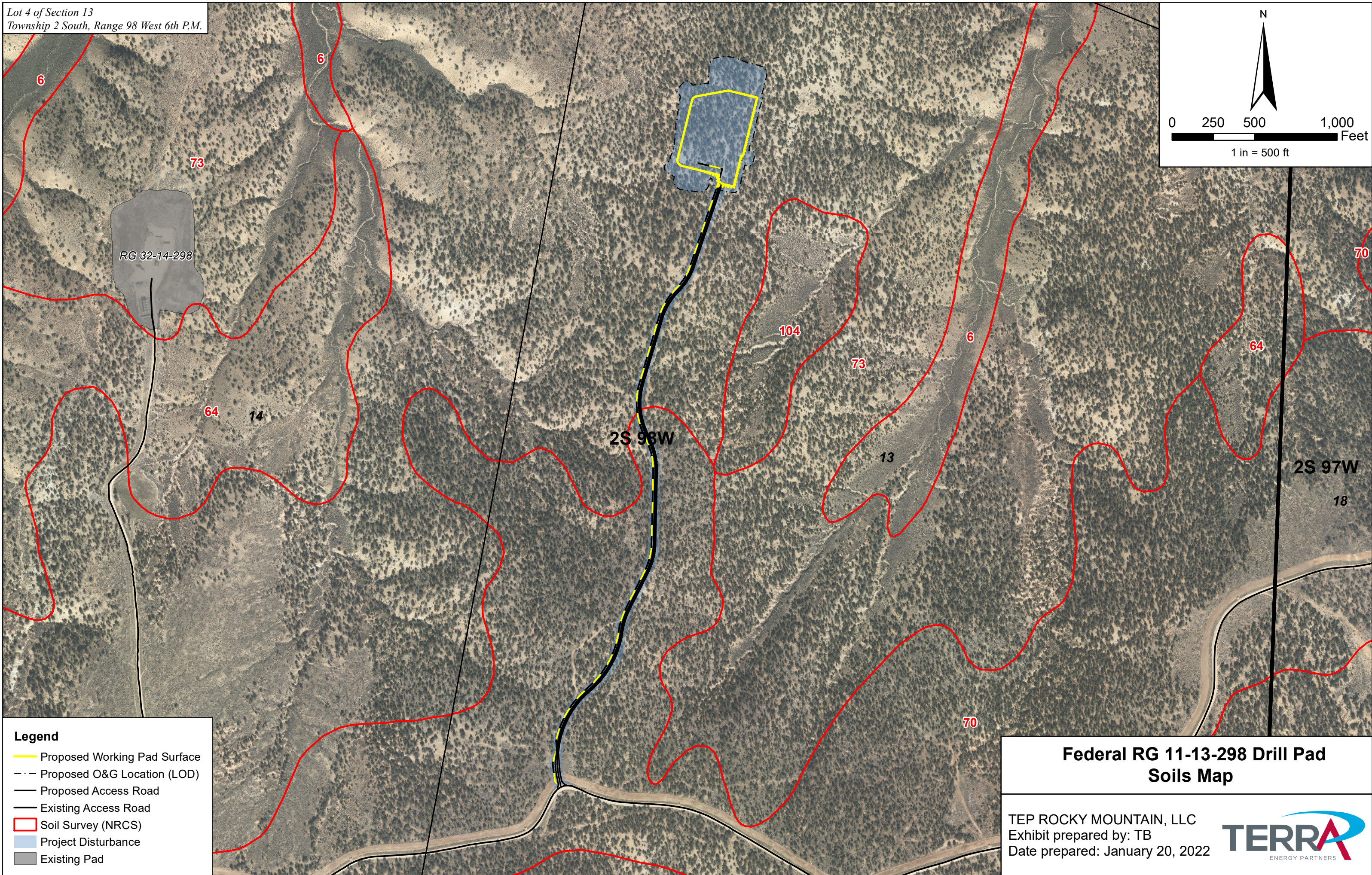
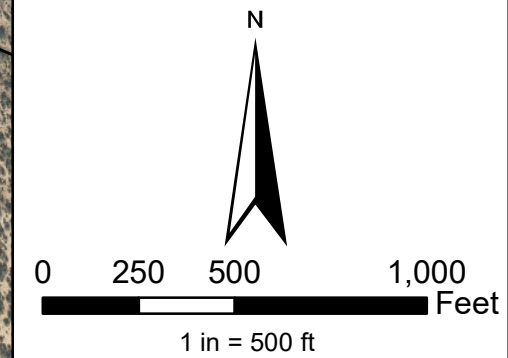
## Data Source Information

Soil Survey Area: Rio Blanco County Area, Colorado

Survey Area Data: Version 16, Sep 2, 2021



Lot 4 of Section 13  
Township 2 South, Range 98 West 6th P.M.



**Legend**

- Proposed Working Pad Surface
- Proposed O&G Location (LOD)
- Proposed Access Road
- Existing Access Road
- Soil Survey (NRCS)
- Project Disturbance
- Existing Pad

**Federal RG 11-13-298 Drill Pad  
Soils Map**

TEP ROCKY MOUNTAIN, LLC  
Exhibit prepared by: TB  
Date prepared: January 20, 2022

