

1" = 20'  
X-Section  
Scale  
1" = 60'

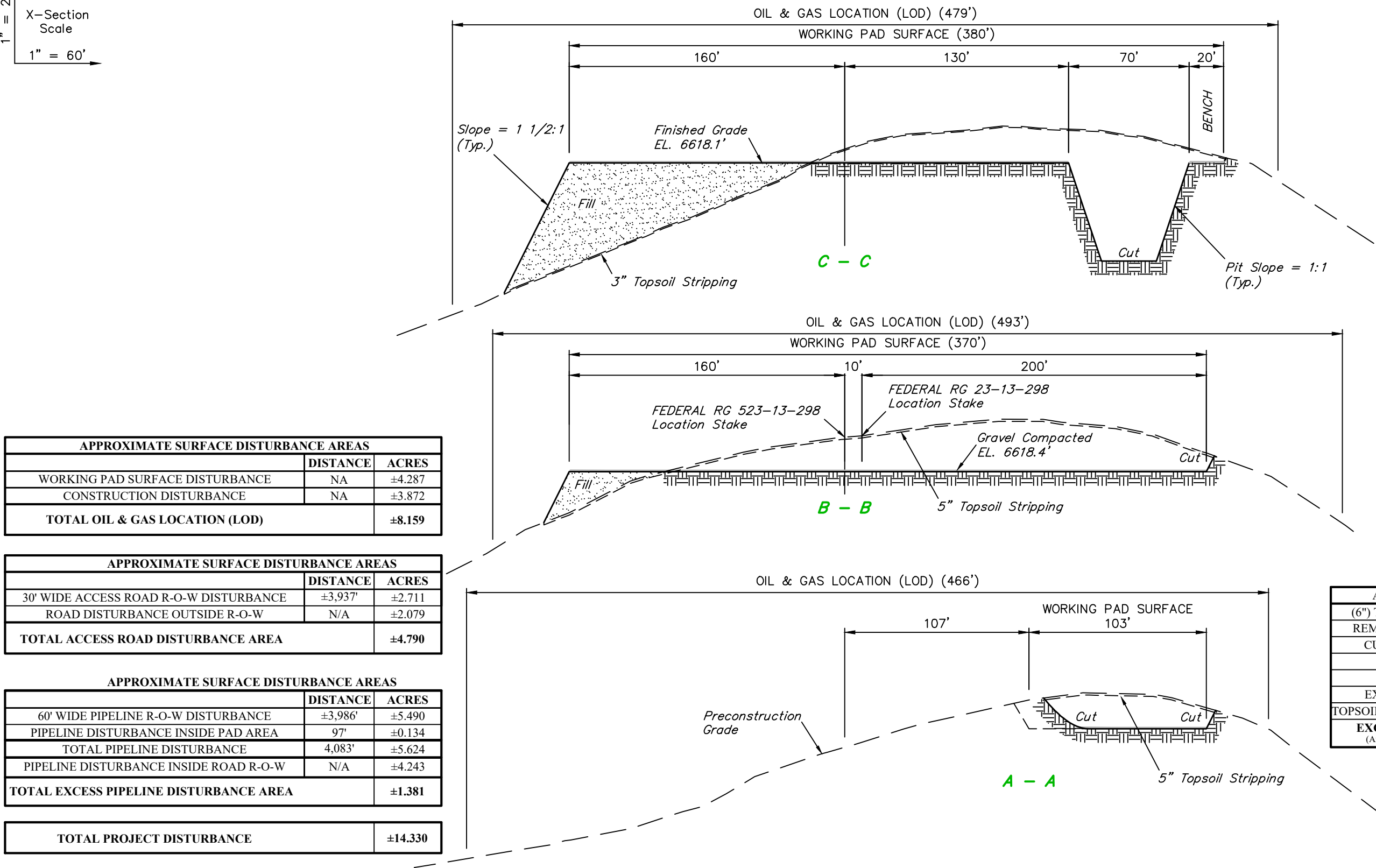


APPROXIMATE SURFACE DISTURBANCE AREAS		
	DISTANCE	ACRES
WORKING PAD SURFACE DISTURBANCE	NA	±4.287
CONSTRUCTION DISTURBANCE	NA	±3.872
TOTAL OIL & GAS LOCATION (LOD)		±8.159

APPROXIMATE SURFACE DISTURBANCE AREAS		
	DISTANCE	ACRES
30' WIDE ACCESS ROAD R-O-W DISTURBANCE	±3,937'	±2.711
ROAD DISTURBANCE OUTSIDE R-O-W	N/A	±2.079
TOTAL ACCESS ROAD DISTURBANCE AREA		±4.790

APPROXIMATE SURFACE DISTURBANCE AREAS		
	DISTANCE	ACRES
60' WIDE PIPELINE R-O-W DISTURBANCE	±3,986'	±5.490
PIPELINE DISTURBANCE INSIDE PAD AREA	97'	±0.134
TOTAL PIPELINE DISTURBANCE	4,083'	±5.624
PIPELINE DISTURBANCE INSIDE ROAD R-O-W	N/A	±4.243
TOTAL EXCESS PIPELINE DISTURBANCE AREA		±1.381

TOTAL PROJECT DISTURBANCE	±14.330
---------------------------	---------



APPROXIMATE EARTHWORK QUANTITIES	
(6") TOPSOIL STRIPPING	3,950 Cu. Yds.
REMAINING LOCATION	26,050 Cu. Yds.
CUTTINGS TRENCH	16,080 Cu. Yds.
TOTAL CUT	46,080 Cu. Yds.
FILL	26,050 Cu. Yds.
EXCESS MATERIAL	20,030 Cu. Yds.
TOPSOIL & TRENCH BACKFILL	20,030 Cu. Yds.
EXCESS UNBALANCE (After Interim Rehabilitation)	0 Cu. Yds.

- NOTES:**
- Fill quantity includes 10% for compaction.
  - Calculations based on 6" of topsoil stripping.
  - Cut/Fill slopes 1 1/2:1 (Typ. except where noted).

**NOTE:**  
Compacted Volume of Approximately  
1750 Cu. Yds. 4" aggregate base pad  
surfacing material is to be  
Applied to Entire Pad Footprint.

Sheet 1 of 2  
REV: 7 04-05-22 M.D. (TOPSOIL CHANGE & UPDATE ACRES)

TEP Rocky Mountain LLC

FEDERAL RG 11-13-298 PAD  
LOT 4, SECTION 13, T2S, R98W, 6th P.M.  
RIO BLANCO COUNTY, COLORADO

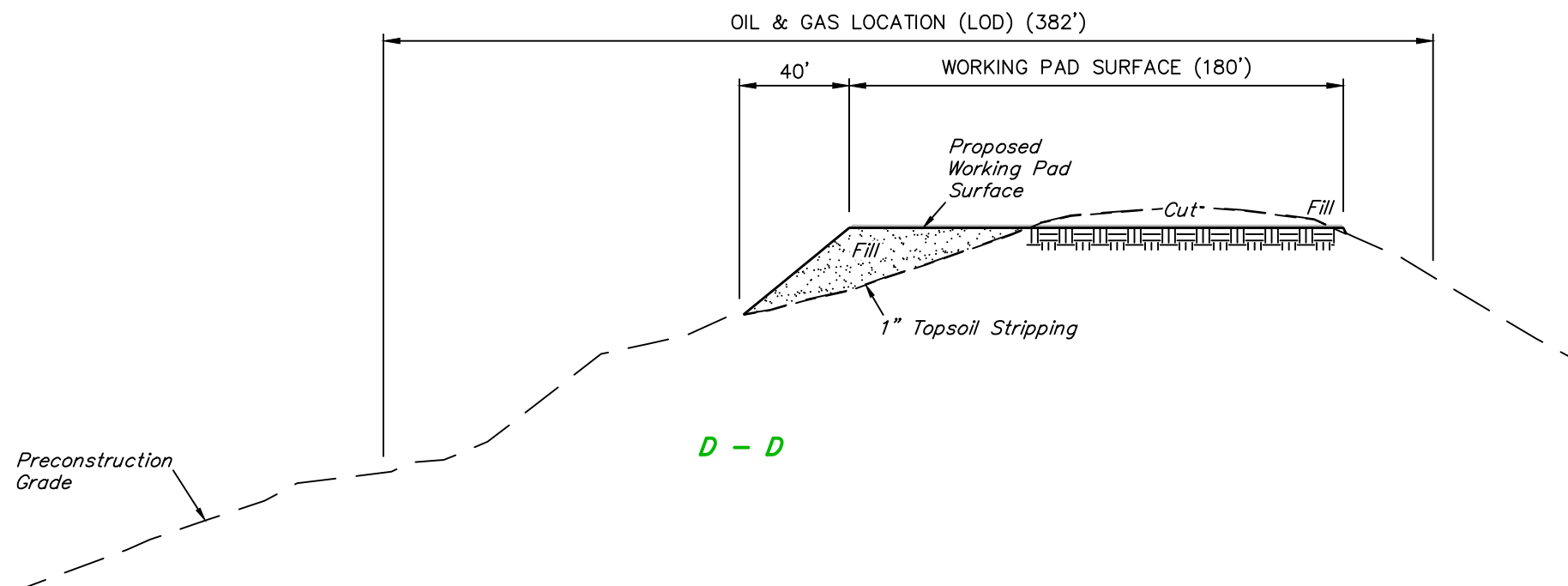
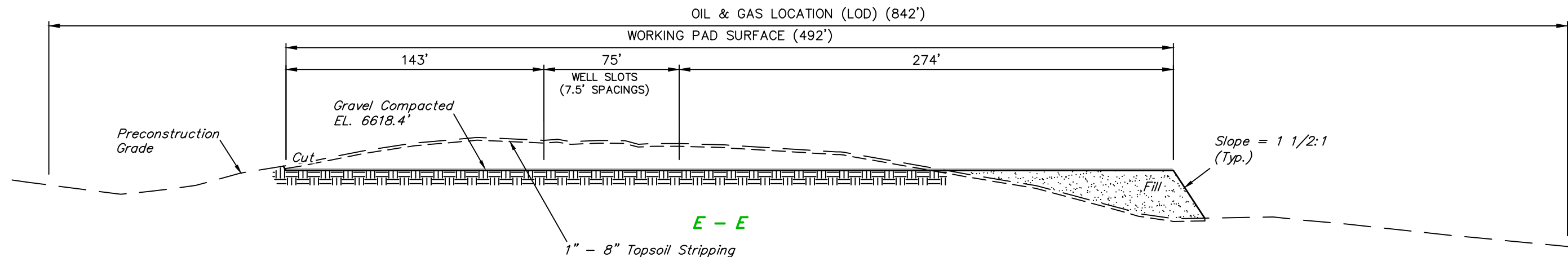
SURVEYED BY	BART HUNTING	07-21-21	SCALE
DRAWN BY	T.L.L.	07-23-21	AS SHOWN

CONSTRUCTION LAYOUT CROSS SECTIONS



UELS, LLC  
Corporate Office \* 85 South 200 East  
Vernal, UT 84078 \* (435) 789-1017

1" = 20'  
X-Section  
Scale  
1" = 60'



Sheet 2 of 2

REV: 7 04-05-22 M.D. (TOPSOIL CHANGE & UPDATE ACRES)

**NOTES:**

- Fill quantity includes 10% for compaction.
- Calculations based on 6" of topsoil stripping.
- Cut/Fill slopes 1 1/2:1 (Typ. except where noted).

**NOTE:**

Compacted Volume of Approximately  
1750 Cu. Yds. 4" aggregate base pad  
surfacing material is to be  
Applied to Entire Pad Footprint.

**TEP Rocky Mountain LLC**

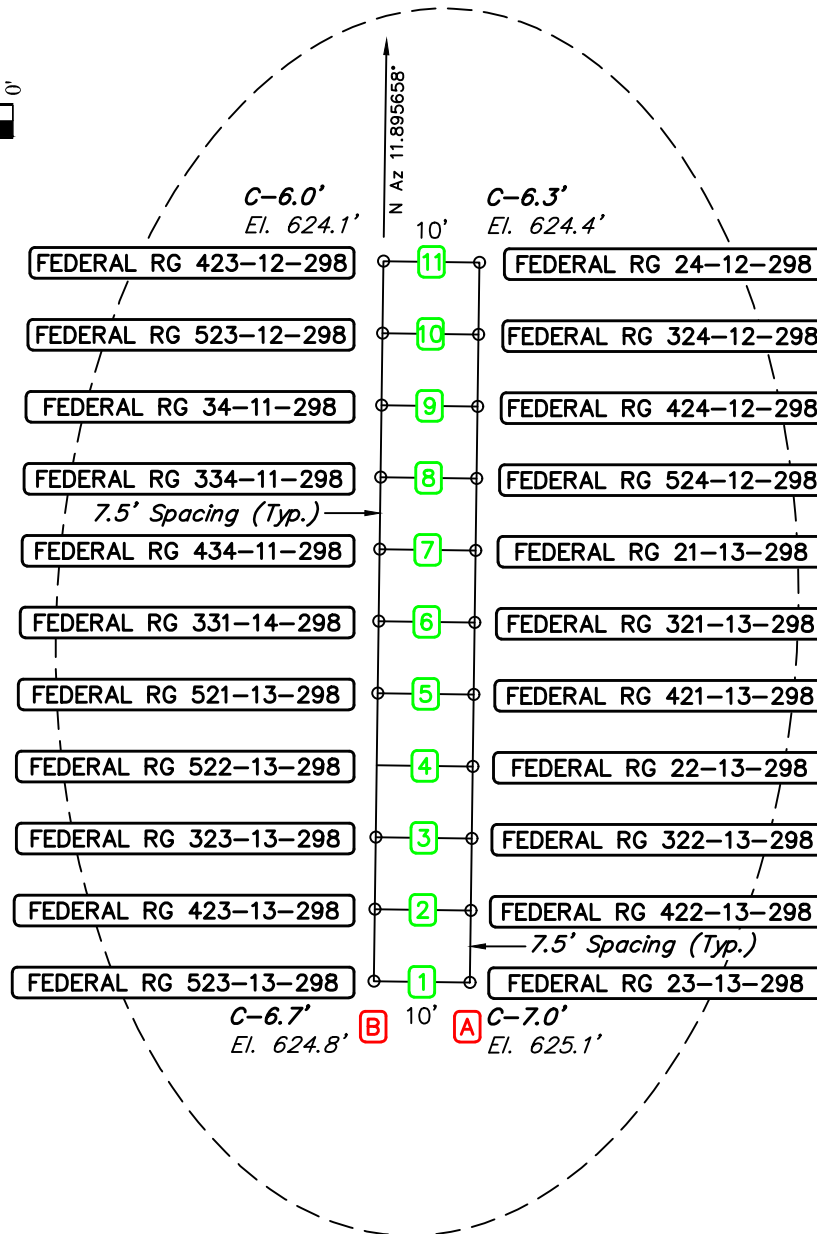
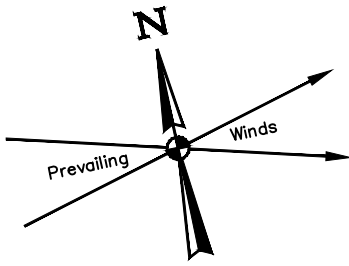
**FEDERAL RG 11-13-298 PAD  
LOT 4, SECTION 13, T2S, R98W, 6th P.M.  
RIO BLANCO COUNTY, COLORADO**

SURVEYED BY	BART HUNTING	07-21-21	SCALE
DRAWN BY	T.L.L.	07-23-21	AS SHOWN

**CONSTRUCTION LAYOUT CROSS SECTIONS**



**UELS, LLC**  
Corporate Office \* 85 South 200 East  
Vernal, UT 84078 \* (435) 789-1017



REV: 3 10-28-21 D.R.B. (PAD NAME CHANGE)

## TEP Rocky Mountain LLC

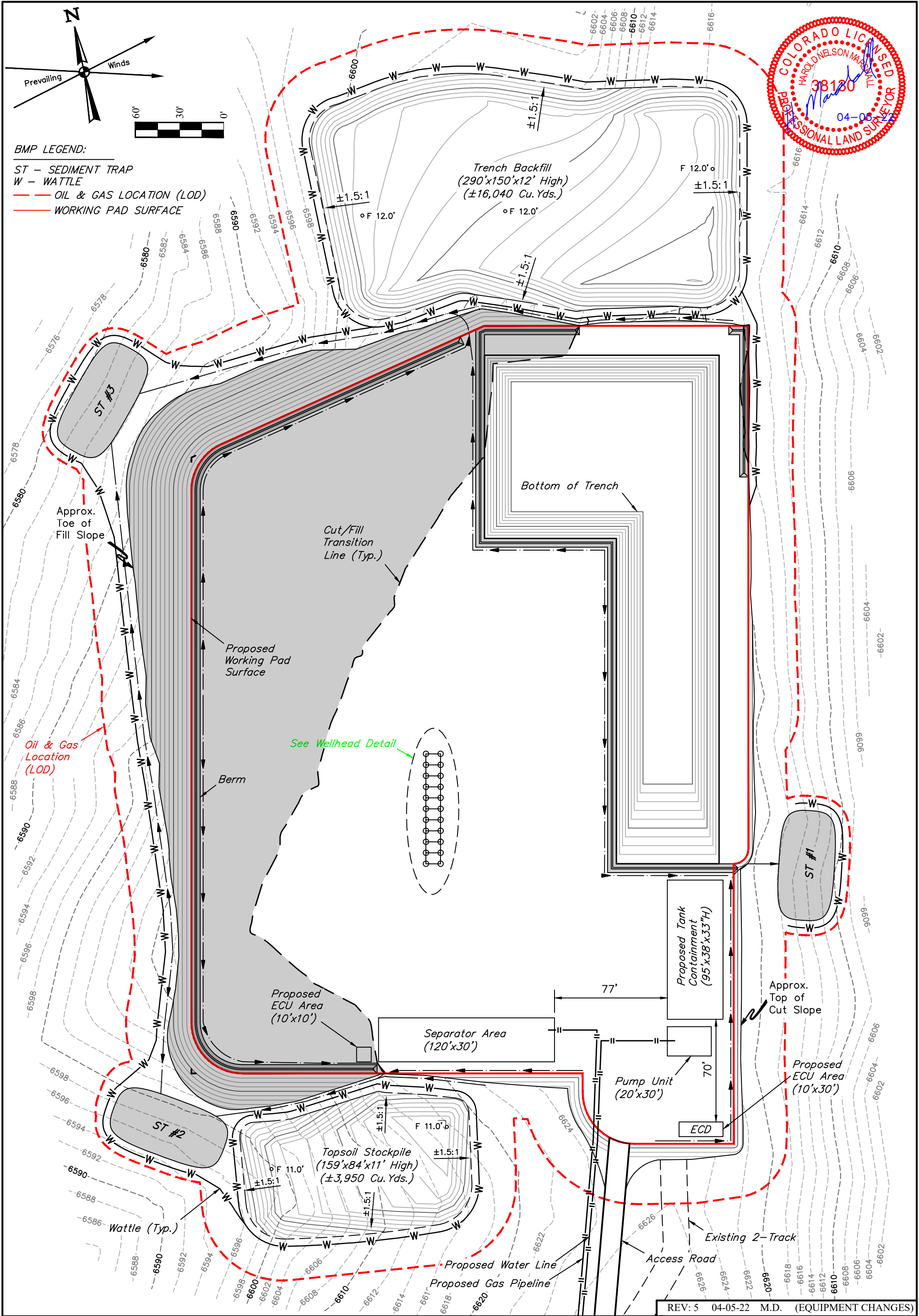
FEDERAL RG 11-13-298 PAD  
LOT 4, SECTION 13, T2S, R98W, 6th P.M.  
RIO BLANCO COUNTY, COLORADO



UELS, LLC  
Corporate Office \* 85 South 200 East  
Vernal, UT 84078 \* (435) 789-1017

SURVEYED BY	BART HUNTING	07-21-21	SCALE
DRAWN BY	T.L.L.	07-23-21	1" = 20'
WELLHEAD DETAIL			





- NOTES:**
- Combustor is to be located a min. of 100' from the wellhead.
  - Contours shown at 2' intervals.

**TEP Rocky Mountain LLC**

**FEDERAL RG 11-13-298 PAD  
LOT 4, SECTION 13, T2S, R98W, 6th P.M.  
RIO BLANCO COUNTY, COLORADO**

SURVEYED BY	BART HUNTING	07-21-21	SCALE
DRAWN BY	T.L.L.	09-20-21	1" = 60'
FINAL CONSTRUCTION GRADING			



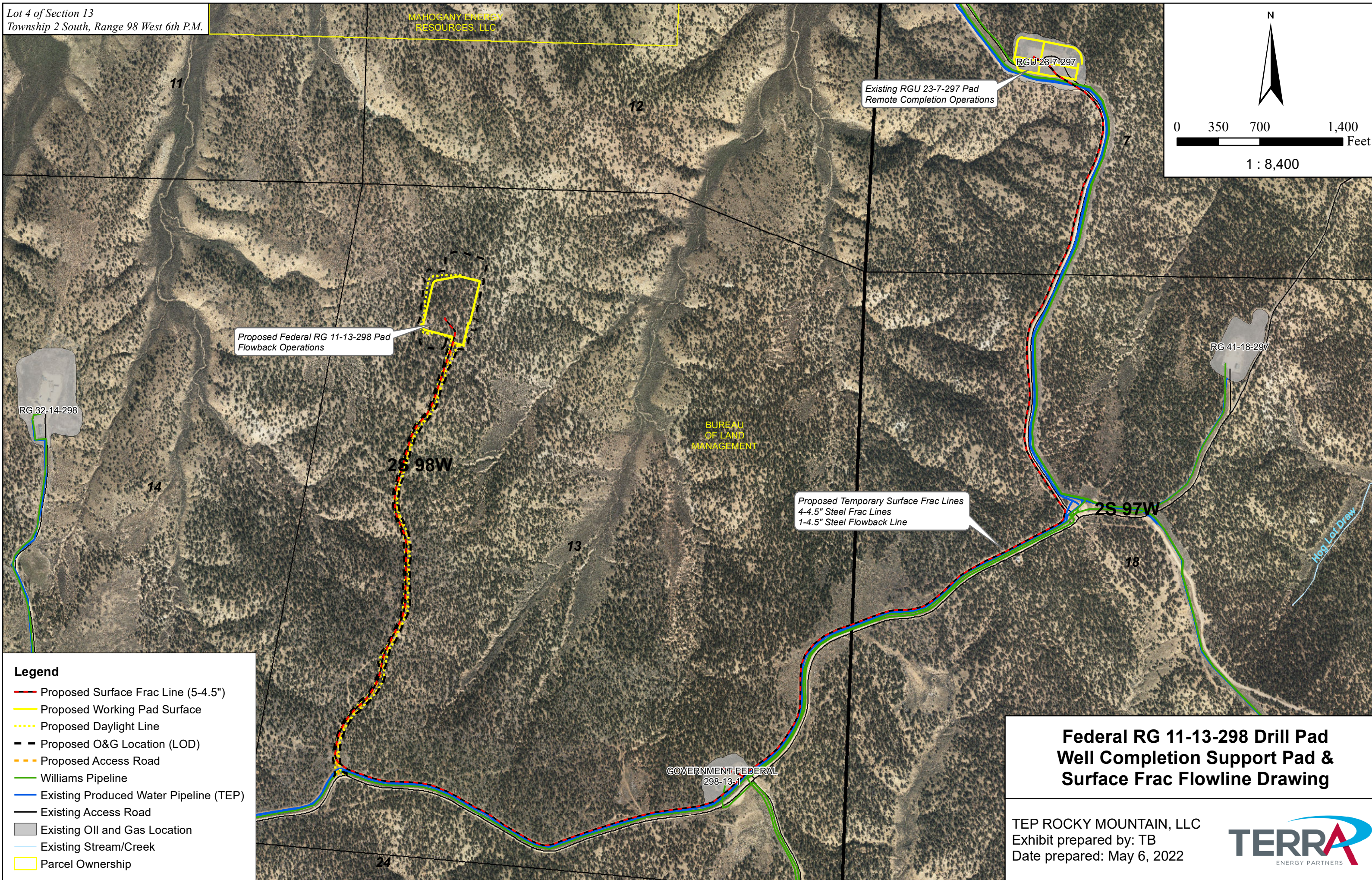
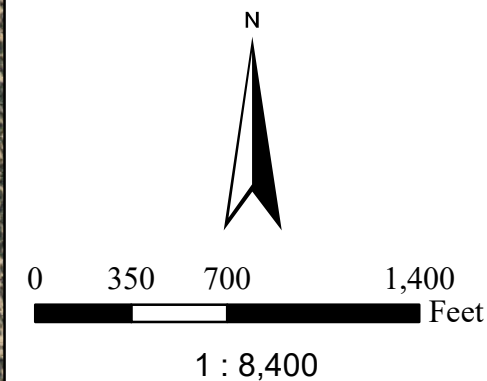
**UELS, LLC**  
Corporate Office \* 85 South 200 East  
Vernal, UT 84078 \* (435) 789-1017





Lot 4 of Section 13  
Township 2 South, Range 98 West 6th P.M.

MAHOGANY ENERGY  
RESOURCES, LLC



### Legend

- Proposed Surface Frac Line (5-4.5")
- Proposed Working Pad Surface
- Proposed Daylight Line
- Proposed O&G Location (LOD)
- Proposed Access Road
- Williams Pipeline
- Existing Produced Water Pipeline (TEP)
- Existing Access Road
- Existing Oil and Gas Location
- Existing Stream/Creek
- Parcel Ownership

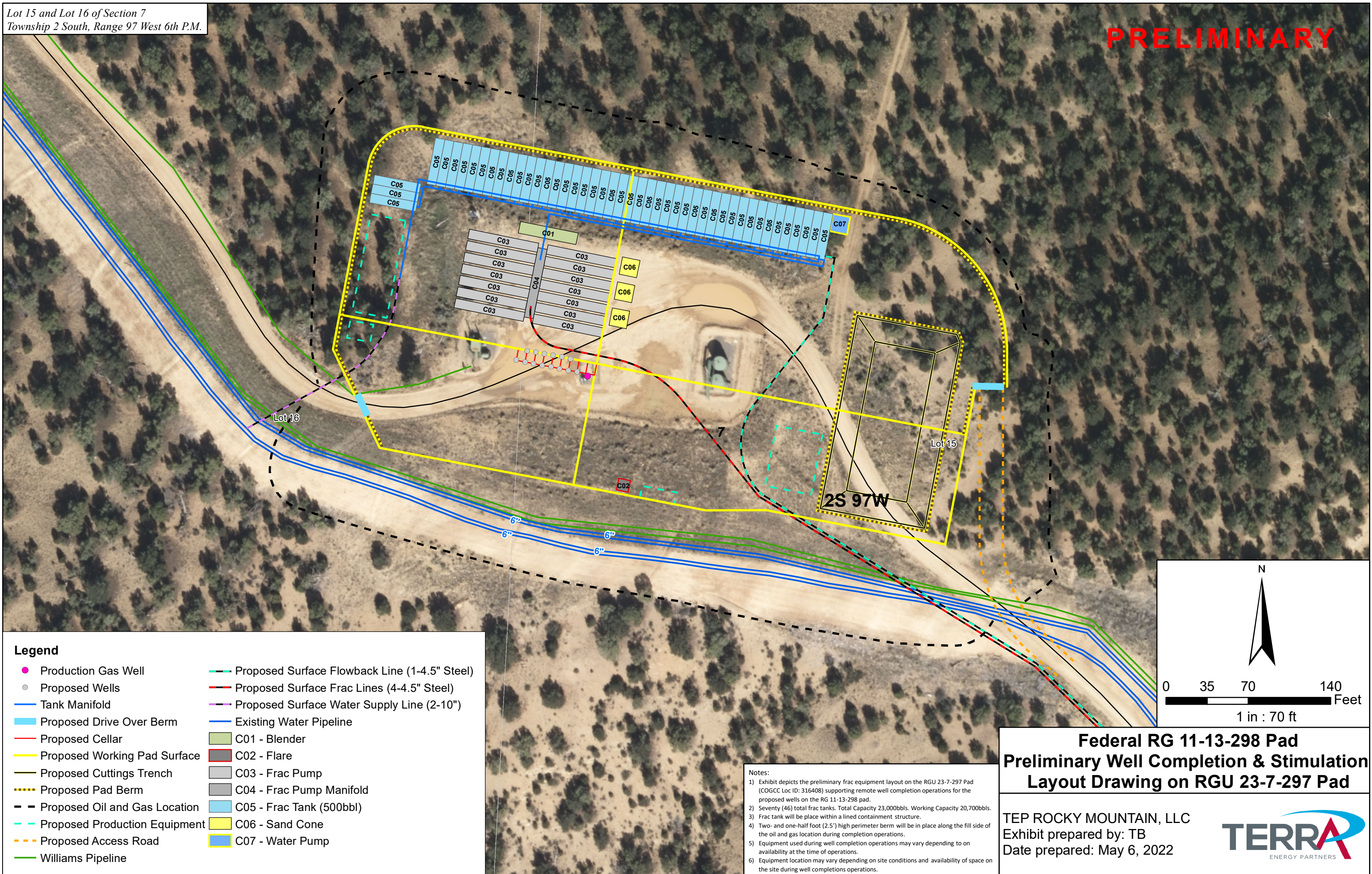
## Federal RG 11-13-298 Drill Pad Well Completion Support Pad & Surface Frac Flowline Drawing

TEP ROCKY MOUNTAIN, LLC  
Exhibit prepared by: TB  
Date prepared: May 6, 2022





PRELIMINARY



### Legend

- Production Gas Well
- Proposed Wells
- Tank Manifold
- Proposed Drive Over Berm
- Proposed Cellar
- Proposed Working Pad Surface
- Proposed Cuttings Trench
- Proposed Pad Berm
- Proposed Oil and Gas Location
- Proposed Production Equipment
- Proposed Access Road
- Williams Pipeline
- Proposed Surface Flowback Line (1-4.5" Steel)
- Proposed Surface Frac Lines (4-4.5" Steel)
- Proposed Surface Water Supply Line (2-10")
- Existing Water Pipeline
- C01 - Blender
- C02 - Flare
- C03 - Frac Pump
- C04 - Frac Pump Manifold
- C05 - Frac Tank (500bbl)
- C06 - Sand Cone
- C07 - Water Pump

### Notes:

- 1) Exhibit depicts the preliminary frac equipment layout on the RGU 23-7-297 Pad (COGCC Loc ID: 316408) supporting remote well completion operations for the proposed wells on the RG 11-13-298 pad.
- 2) Seventy (46) total frac tanks. Total Capacity 23,000bbls. Working Capacity 20,700bbls.
- 3) Frac tank will be place within a lined containment structure.
- 4) Two- and one-half foot (2.5') high perimeter berm will be in place along the fill side of the oil and gas location during completion operations.
- 5) Equipment used during well completion operations may vary depending on availability at the time of operations.
- 6) Equipment location may vary depending on site conditions and availability of space on the site during well completions operations.

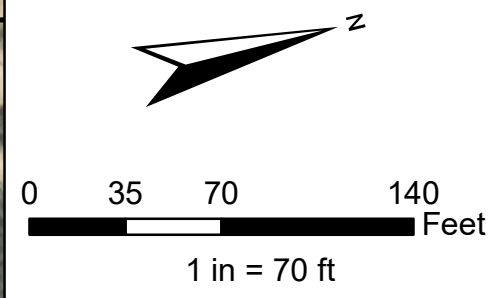
## Federal RG 11-13-298 Pad Preliminary Well Completion & Stimulation Layout Drawing on RGU 23-7-297 Pad

TEP ROCKY MOUNTAIN, LLC  
Exhibit prepared by: TB  
Date prepared: May 6, 2022





# PRELIMINARY



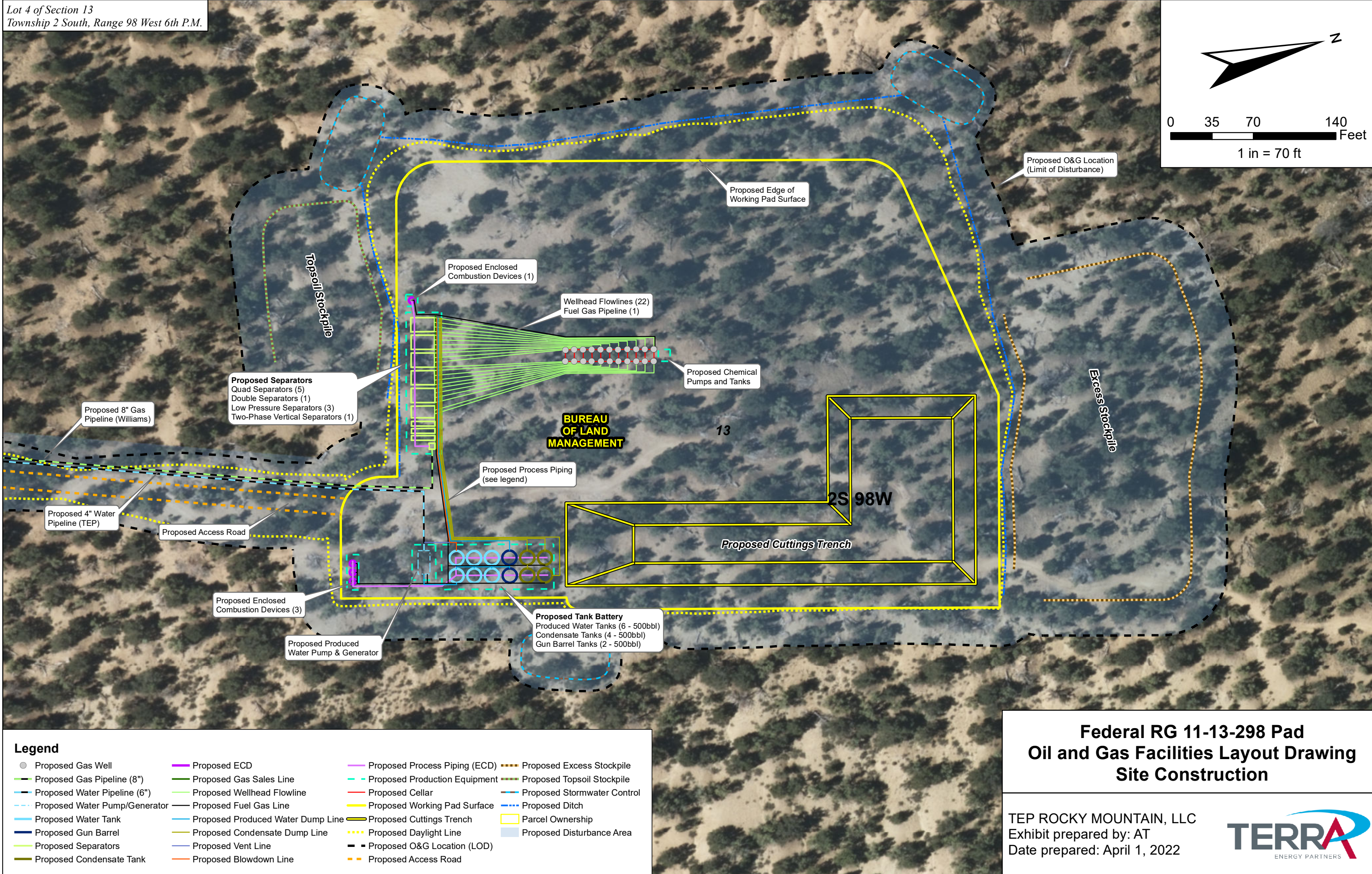
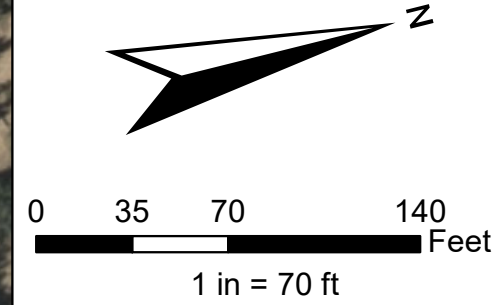
● Proposed Gas Well	— Proposed Working Pad Surface	— Proposed Surface Frac Lines (5-4.5")
— Proposed ECD Line	— Proposed Cuttings Trench	— Proposed Flowback Line (1-4.5")
— Proposed Flowline	... Proposed Daylight Line	■ FB01 - HP 4-Phase Separator
— Proposed Tank Manifold	— Proposed Oil & Gas Location (LOD)	■ FB02 - LP P-Tank
— Proposed Wellhead Manifold	— Existing Two-Track Road	■ FB03 - Produced Water Tank
— Proposed Gas Pipeline	- - - Proposed Access Road	■ FB04 - Water Pump
— Proposed Water Pipeline	- - - Proposed Excess Stockpile	■ FB05 - Enclosed Combustion Device
— Proposed Production Equipment	- - - Proposed Topsoil Stockpile	
— Proposed Cellar		

- 1) Equipment used during flowback operation may vary depending to on availability at the time of operations.
- 2) Equipment location may vary depending on site conditions and availability of space on the site during well completions operations.
- 3) Please see the Construction Layout for site specific storm water control measures.

TEP ROCKY MOUNTAIN, LLC  
Exhibit prepared by: AT  
Date prepared: May 6, 2022





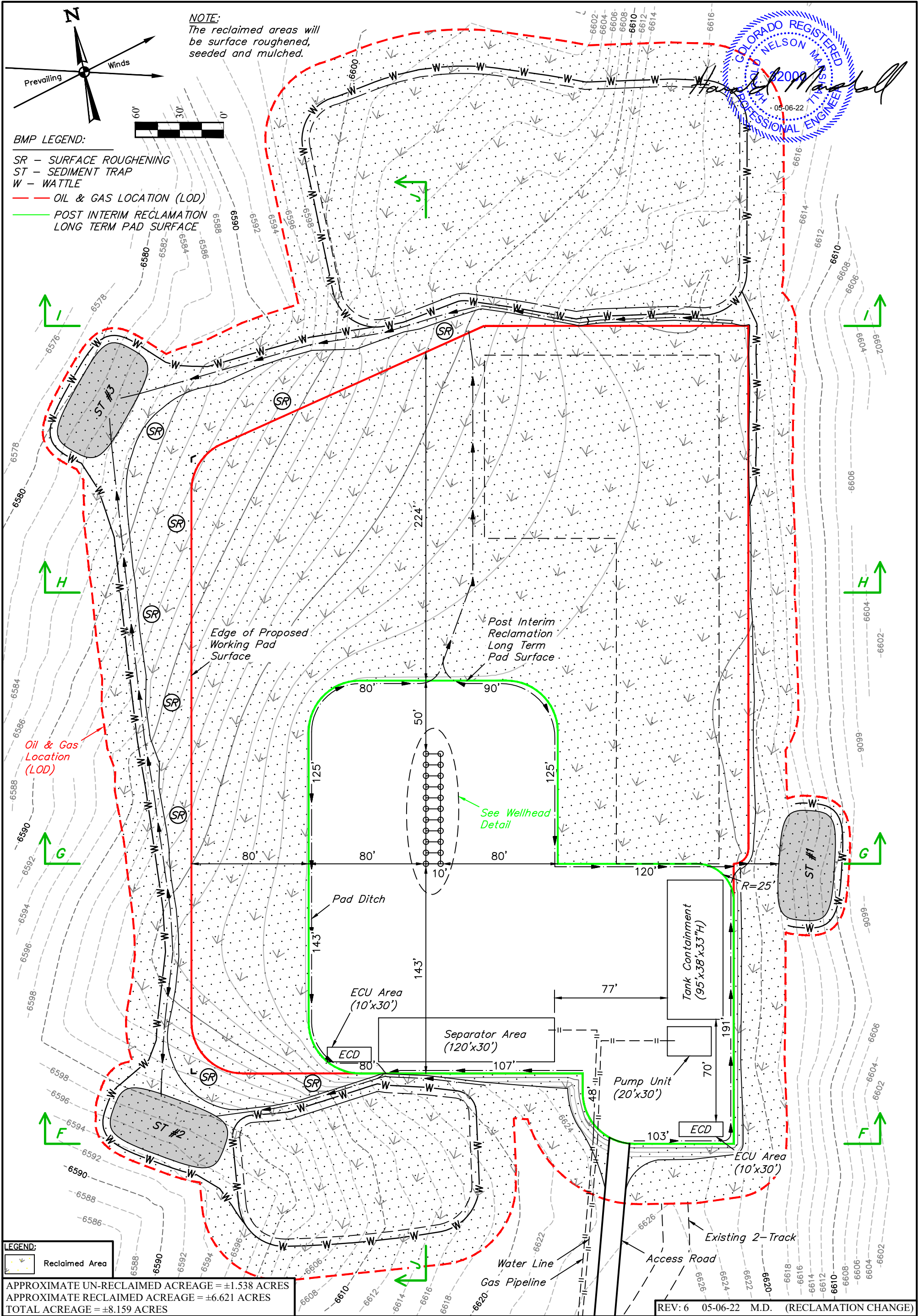


Legend			
Proposed Gas Well	Proposed ECD	Proposed Process Piping (ECD)	Proposed Excess Stockpile
Proposed Gas Pipeline (8")	Proposed Gas Sales Line	Proposed Production Equipment	Proposed Topsoil Stockpile
Proposed Water Pipeline (6")	Proposed Wellhead Flowline	Proposed Cellar	Proposed Stormwater Control
Proposed Water Pump/Generator	Proposed Fuel Gas Line	Proposed Working Pad Surface	Proposed Ditch
Proposed Water Tank	Proposed Produced Water Dump Line	Proposed Cuttings Trench	Parcel Ownership
Proposed Gun Barrel	Proposed Condensate Dump Line	Proposed Daylight Line	Proposed Disturbance Area
Proposed Separators	Proposed Vent Line	Proposed O&G Location (LOD)	
Proposed Condensate Tank	Proposed Blowdown Line	Proposed Access Road	

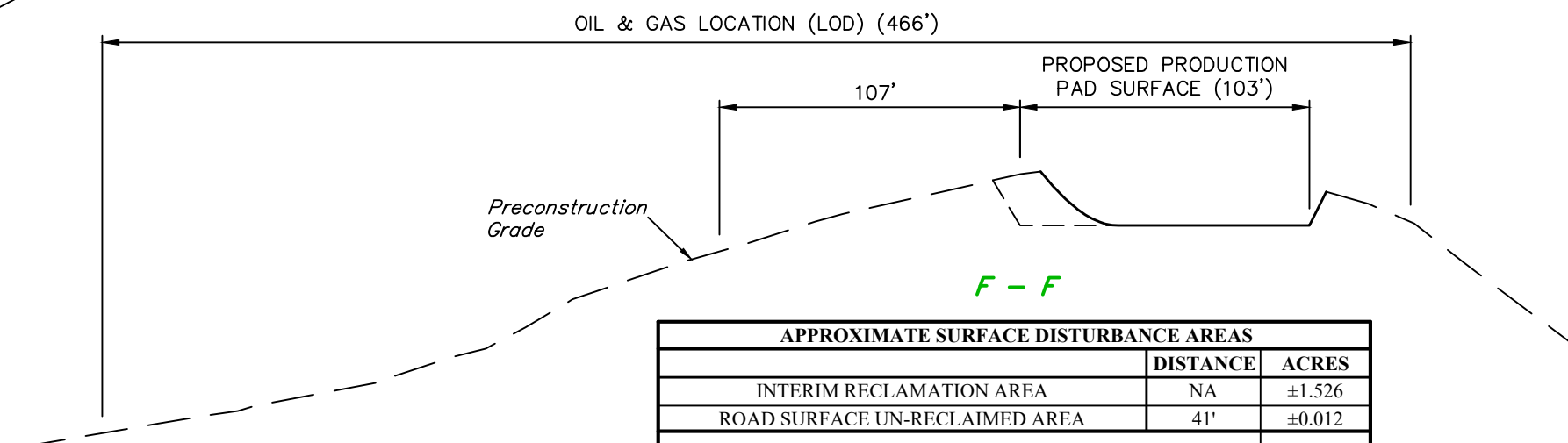
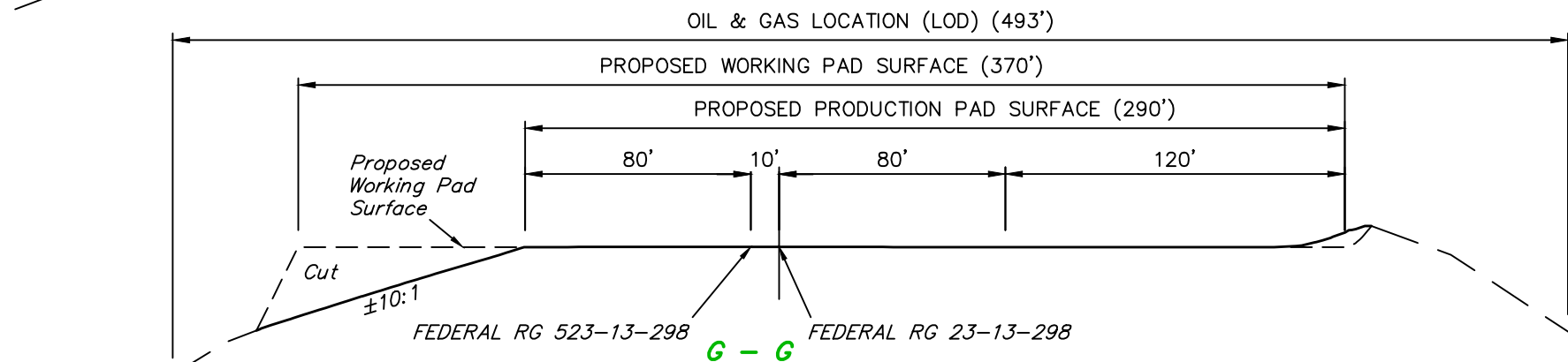
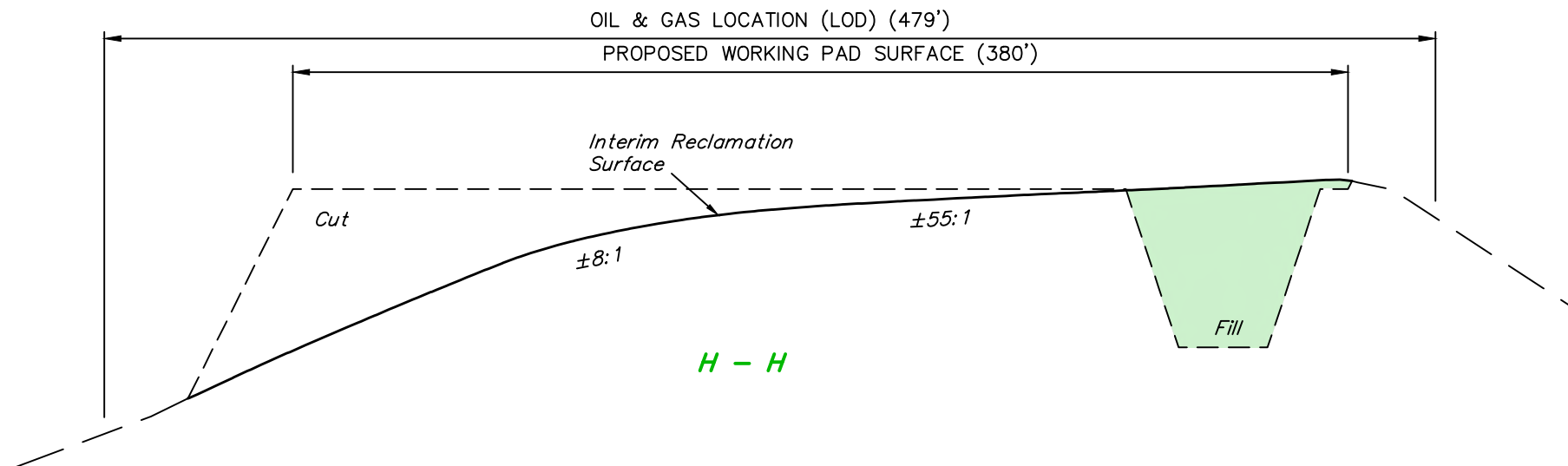
**Federal RG 11-13-298 Pad  
Oil and Gas Facilities Layout Drawing  
Site Construction**

TEP ROCKY MOUNTAIN, LLC  
Exhibit prepared by: AT  
Date prepared: April 1, 2022





1" = 20'  
X-Section  
Scale  
1" = 60'



**NOTE:**  
Reclaim Slopes Vary as Shown.

APPROXIMATE SURFACE DISTURBANCE AREAS		
	DISTANCE	ACRES
INTERIM RECLAMATION AREA	NA	±1.526
ROAD SURFACE UN-RECLAIMED AREA	41'	±0.012
TOTAL SURFACE USE AREA		±1.538

Sheet 1 of 2

REV: 5 05-06-22 M.D. (RECLAMATION CHANGE)

TEP Rocky Mountain LLC

FEDERAL RG 11-13-298 PAD  
LOT 4, SECTION 13, T2S, R98W, 6th P.M.  
RIO BLANCO COUNTY, COLORADO

SURVEYED BY	BART HUNTING	07-21-21	SCALE
DRAWN BY	T.L.L.	07-23-21	AS SHOWN

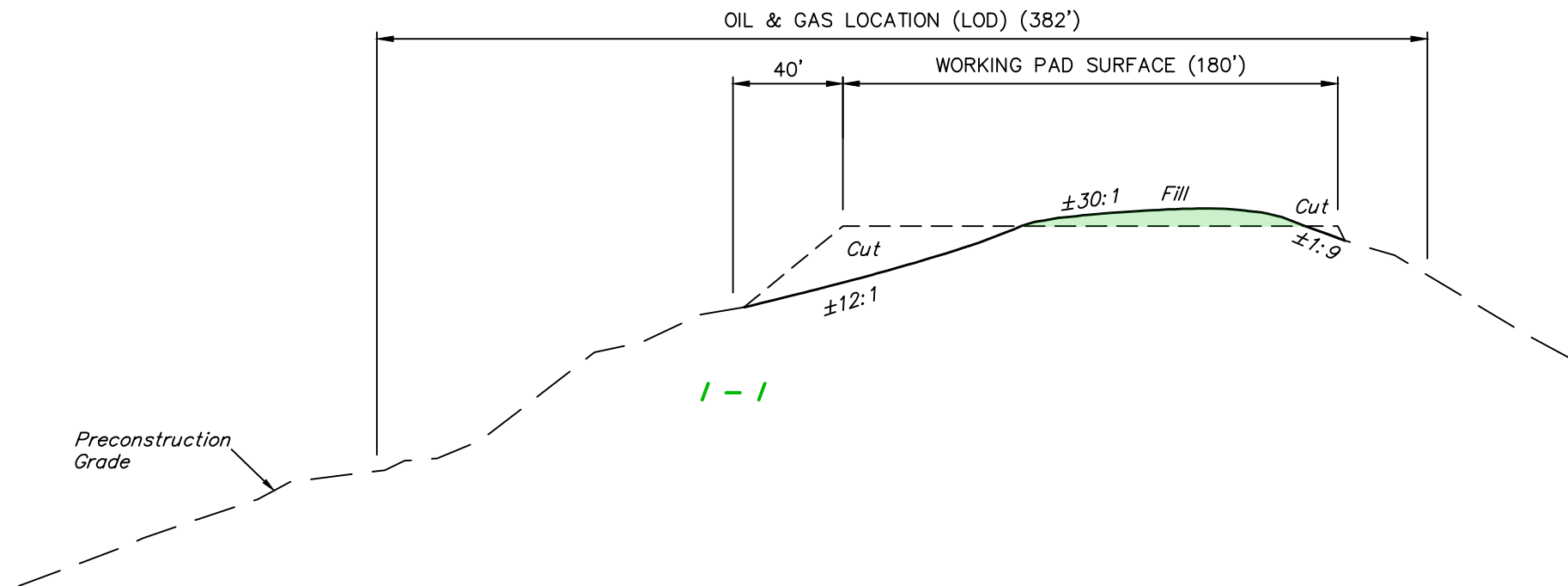
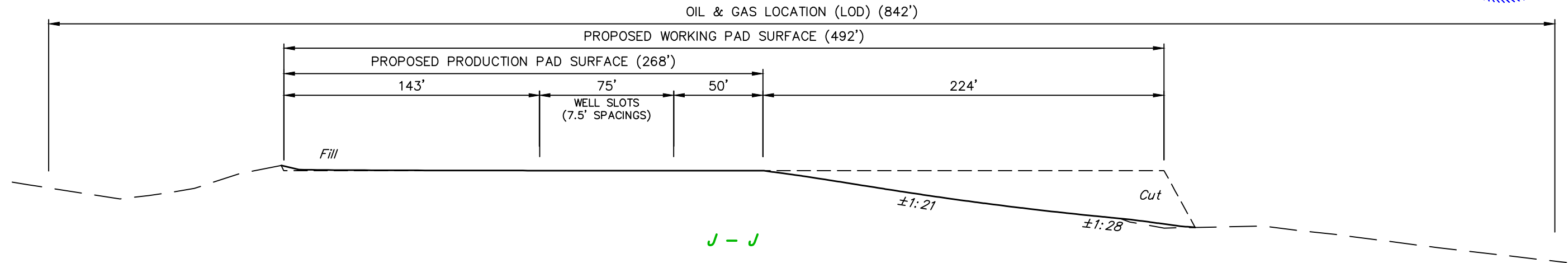
INTERIM RECLAMATION CROSS SECTIONS



UELS, LLC  
Corporate Office \* 85 South 200 East  
Vernal, UT 84078 \* (435) 789-1017



1" = 20'  
X-Section  
Scale  
1" = 60'



**NOTE:**  
Reclaim Slopes Vary as Shown.

Sheet 2 of 2

REV: 3 01-10-22 T.L.L. (TRENCH CHANGES & ADD (LOD) DIMENSIONS)

TEP Rocky Mountain LLC

FEDERAL RG 11-13-298 PAD  
LOT 4, SECTION 13, T2S, R98W, 6th P.M.  
RIO BLANCO COUNTY, COLORADO

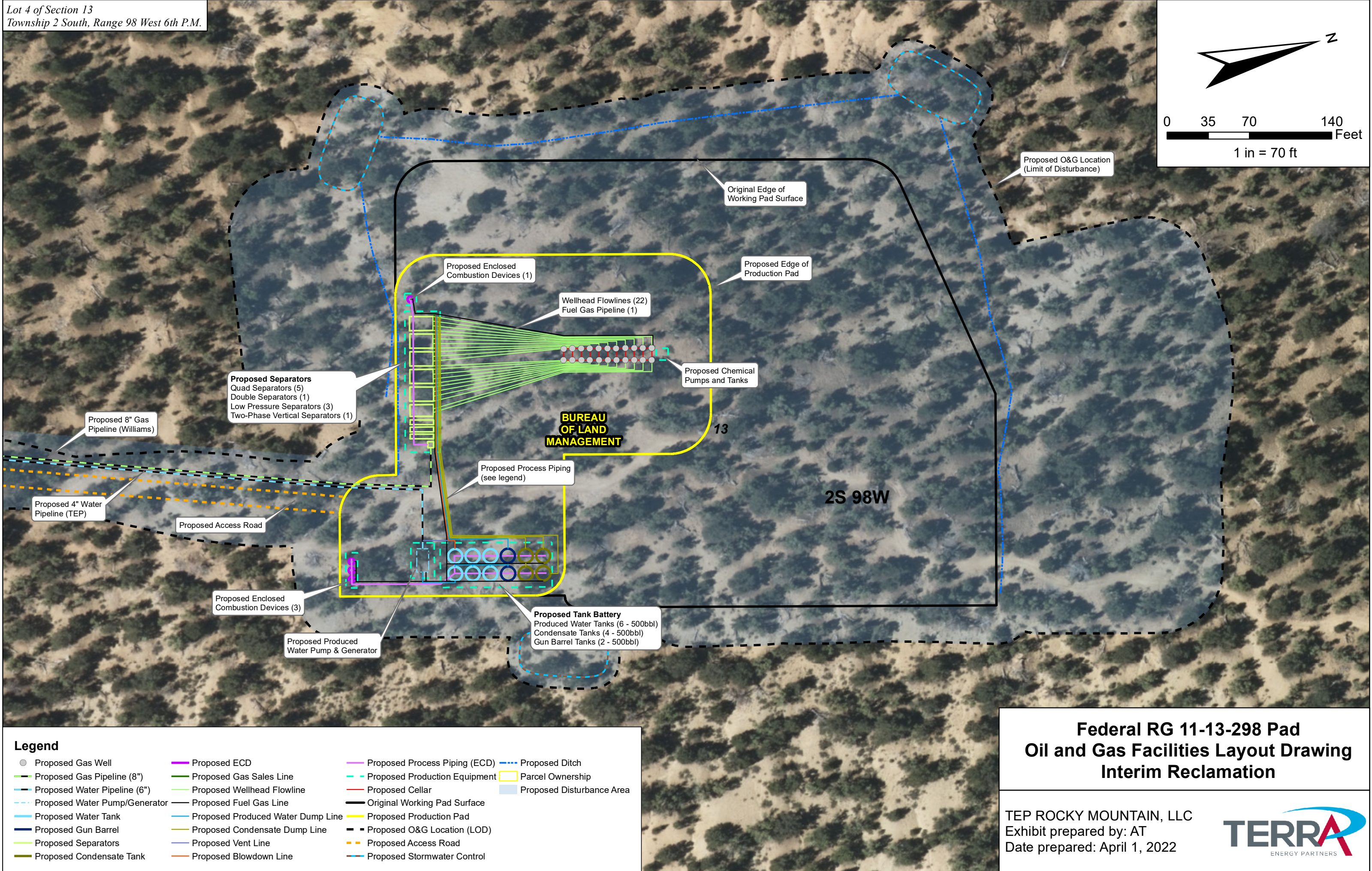
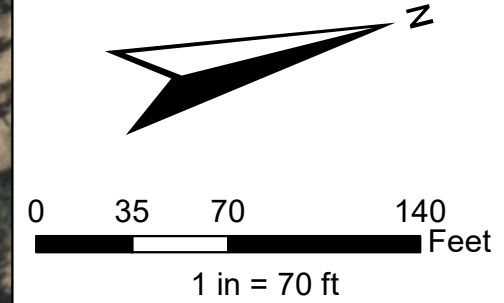
SURVEYED BY	BART HUNTING	07-21-21	SCALE
DRAWN BY	T.L.L.	07-23-21	AS SHOWN

INTERIM RECLAMATION CROSS SECTIONS












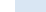

















UELS, LLC  
Corporate Office \* 85 South 200 East  
Vernal, UT 84078 \* (435) 789-1017





# Legend

 Proposed Gas Well	 Proposed ECD	 Proposed Process Piping (ECD)	 Proposed Ditch
 Proposed Gas Pipeline (8")	 Proposed Gas Sales Line	 Proposed Production Equipment	 Parcel Ownership
 Proposed Water Pipeline (6")	 Proposed Wellhead Flowline	 Proposed Cellar	 Proposed Disturbance Area
 Proposed Water Pump/Generator	 Proposed Fuel Gas Line	 Original Working Pad Surface	
 Proposed Water Tank	 Proposed Produced Water Dump Line	 Proposed Production Pad	
 Proposed Gun Barrel	 Proposed Condensate Dump Line	 Proposed O&G Location (LOD)	
 Proposed Separators	 Proposed Vent Line	 Proposed Access Road	
 Proposed Condensate Tank	 Proposed Blowdown Line	 Proposed Stormwater Control	

**Federal RG 11-13-298 Pad**  
**Oil and Gas Facilities Layout Drawing**  
**Interim Reclamation**

TEP ROCKY MOUNTAIN, LLC  
Exhibit prepared by: AT  
Date prepared: April 1, 2022