



PHOTO: VIEW OF LOCATION STAKE

CAMERA ANGLE: SOUTHERLY



PHOTO: VIEW FROM BEGINNING OF PROPOSED ACCESS

CAMERA ANGLE: NORTHERLY

REV: 2 04-05-22 M.D. (DIRECTION LABEL CHANGE)

TEP Rocky Mountain LLC

**FEDERAL RG 11-13-298 PAD
LOT 4, SECTION 13, T2S, R98W, 6th P.M.
RIO BLANCO COUNTY, COLORADO**

UELS, LLC

Corporate Office * 85 South 200 East
Vernal, UT 84078 * (435) 789-1017

TAKEN BY	DAVID KAY	09-28-21	
DRAWN BY	D.R.B.	09-29-21	
LOCATION PHOTOS			PHOTO 1





PHOTO: VIEW OF LOCATION STAKES

CAMERA ANGLE: NORTHERLY

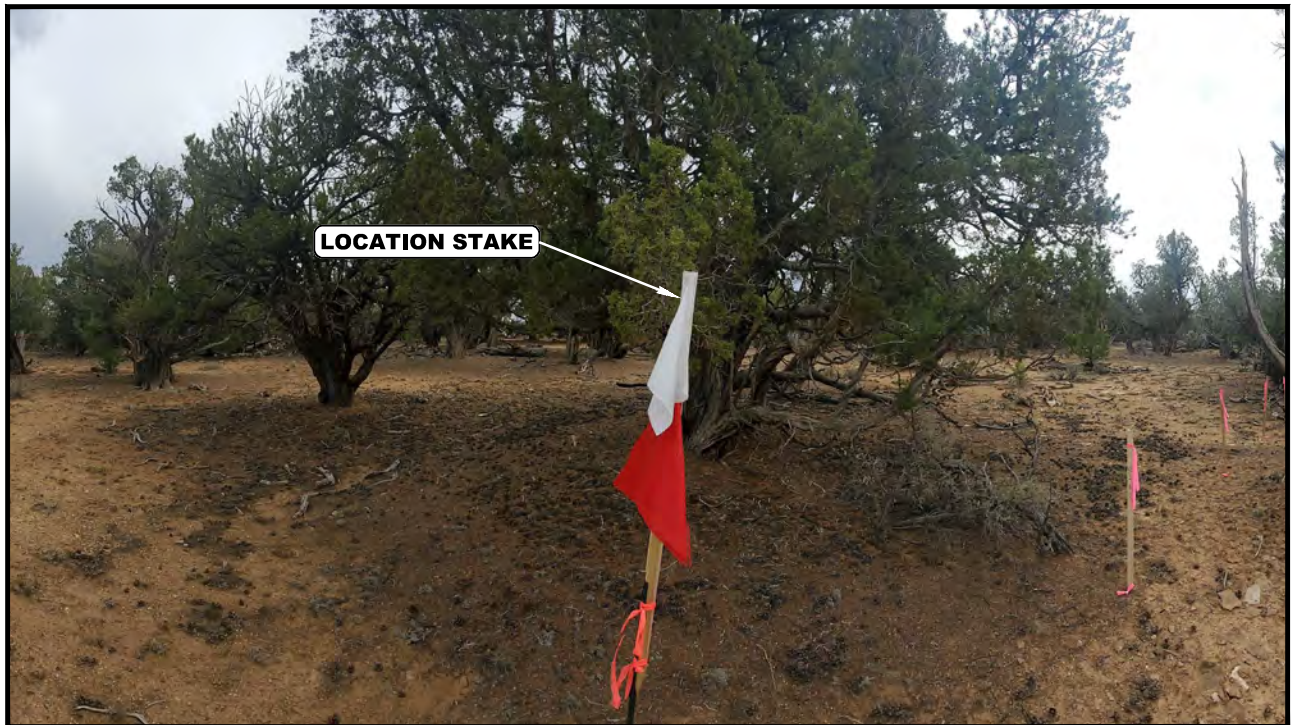


PHOTO: VIEW OF LOCATION STAKES

CAMERA ANGLE: EASTERLY

REV: 1 10-28-21 D.R.B. (PAD NAME CHANGE)

TEP Rocky Mountain LLC

FEDERAL RG 11-13-298 PAD
LOT 4, SECTION 13, T2S, R98W, 6th P.M.
RIO BLANCO COUNTY, COLORADO



UELS, LLC
Corporate Office * 85 South 200 East
Vernal, UT 84078 * (435) 789-1017

TAKEN BY	DAVID KAY	09-28-21	
DRAWN BY	D.R.B.	09-29-21	
LOCATION PHOTOS			PHOTO 2



PHOTO: VIEW OF LOCATION STAKES

CAMERA ANGLE: SOUTHERLY



PHOTO: VIEW OF LOCATION STAKES

CAMERA ANGLE: WESTERLY

REV: 1 10-28-21 D.R.B. (PAD NAME CHANGE)

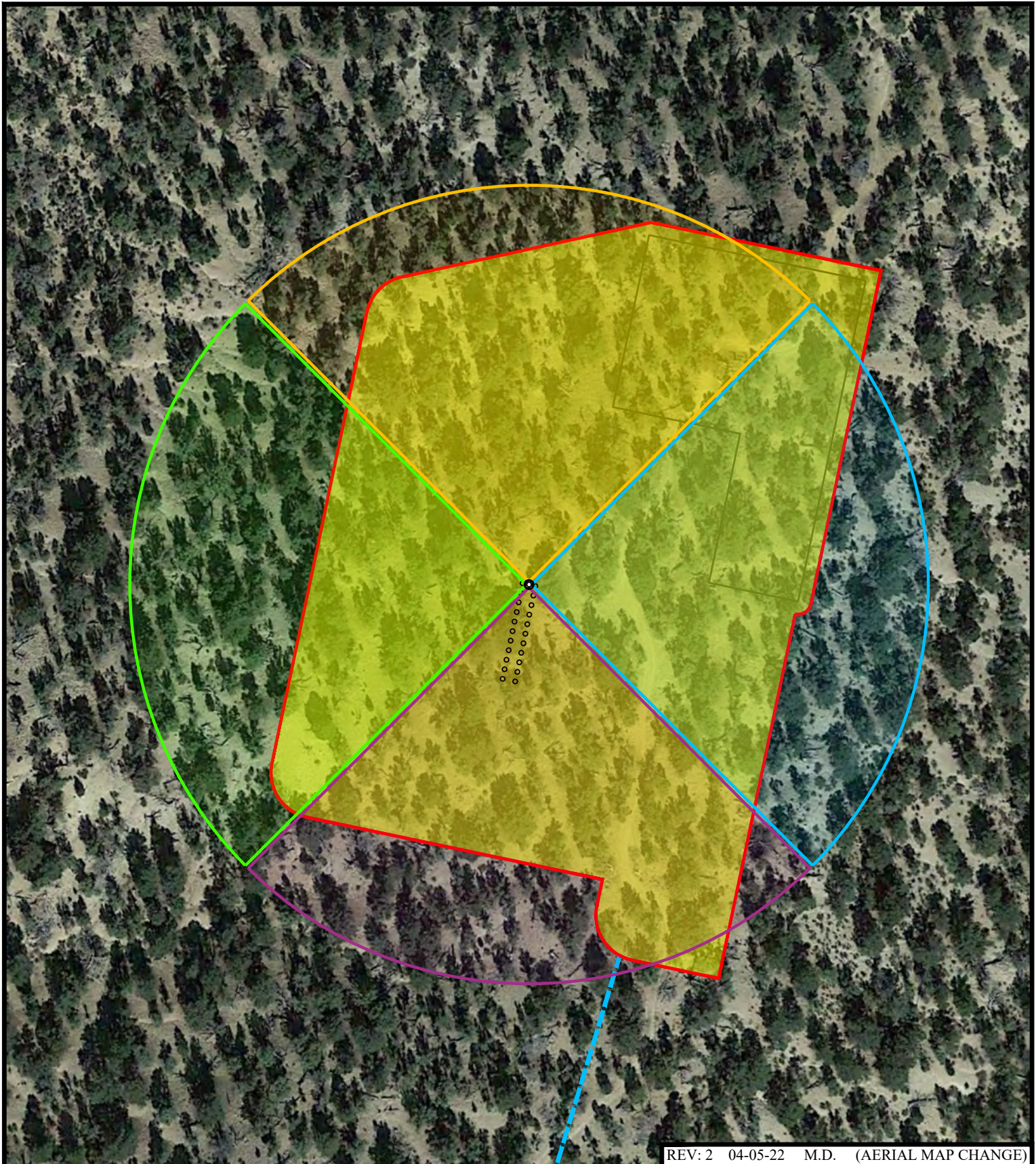
TEP Rocky Mountain LLC

FEDERAL RG 11-13-298 PAD
LOT 4, SECTION 13, T2S, R98W, 6th P.M.
RIO BLANCO COUNTY, COLORADO



UELS, LLC
Corporate Office * 85 South 200 East
Vernal, UT 84078 * (435) 789-1017

TAKEN BY	DAVID KAY	09-28-21	
DRAWN BY	D.R.B.	09-29-21	
LOCATION PHOTOS			PHOTO 3



REV: 2 04-05-22 M.D. (AERIAL MAP CHANGE)

LEGEND:

- WORKING PAD SURFACE**
- PROPOSED ACCESS ROAD**
- NORTH FIELD OF VIEW**
- EAST FIELD OF VIEW**
- SOUTH FIELD OF VIEW**
- WEST FIELD OF VIEW**
- STANDING POINT**



UELS, LLC

Corporate Office * 85 South 200 East
Vernal, UT 84078 * (435) 789-1017

TEP Rocky Mountain LLC

**FEDERAL RG 11-13-298 PAD
LOT 4, SECTION 13, T2S, R98W, 6th P.M.
RIO BLANCO COUNTY, COLORADO**

SURVEYED BY	DAVID KAY	09-28-21	SCALE
DRAWN BY	D.R.B.	09-29-21	1 : 12,000
AERIAL MAP			TOPO 1