

FEDERAL RG 11-13-298 PAD - Cultural Distances Table (Rule 304.b.(3))

Cultural Feature	Distance (from WPS)	Bearing (Direction)	Count within radii of WPS			
			0'-500'	501'-1,000'	1,001'-2,000'	2,000'-5280'
Public Road (CR 24) ①	3989'±	(NW)				
Above Ground Utilities ②	3967'±	(NW)				
Railroad	>5280'	(NW)				
Property Line ③	2121'	(N)				
Building	>5280'	(SE)				
Building Unit	>5280'	(SE)	0	0	0	0
Residential Building Unit	>5280'	(SE)	0	0	0	0
High Occupancy Building Unit	>5280'	(NE)	0	0	0	0
School Property	>5280'	(NE)	0	0	0	0
School Facility	>5280'	(NE)	0	0	0	0
Designated Outdoor Activity Area	>5280'	(NE)	0	0	0	0
Child Care Center	>5280'	(NE)				
Disproportionately Impacted Communities	>5280'	(SE)				
Residential Building Unit	>5280'	(NE)				
High Occupancy Building Unit	>5280'	(NE)				
School Facility	>5280'	(NE)				

REV: 2 10-28-21 D.R.B. (PAD NAME CHANGE)

**TEP Rocky Mountain LLC**

**FEDERAL RG 11-13-298 PAD  
LOT 4, SECTION 13, T2S, R98W, 6th P.M.  
RIO BLANCO COUNTY, COLORADO**

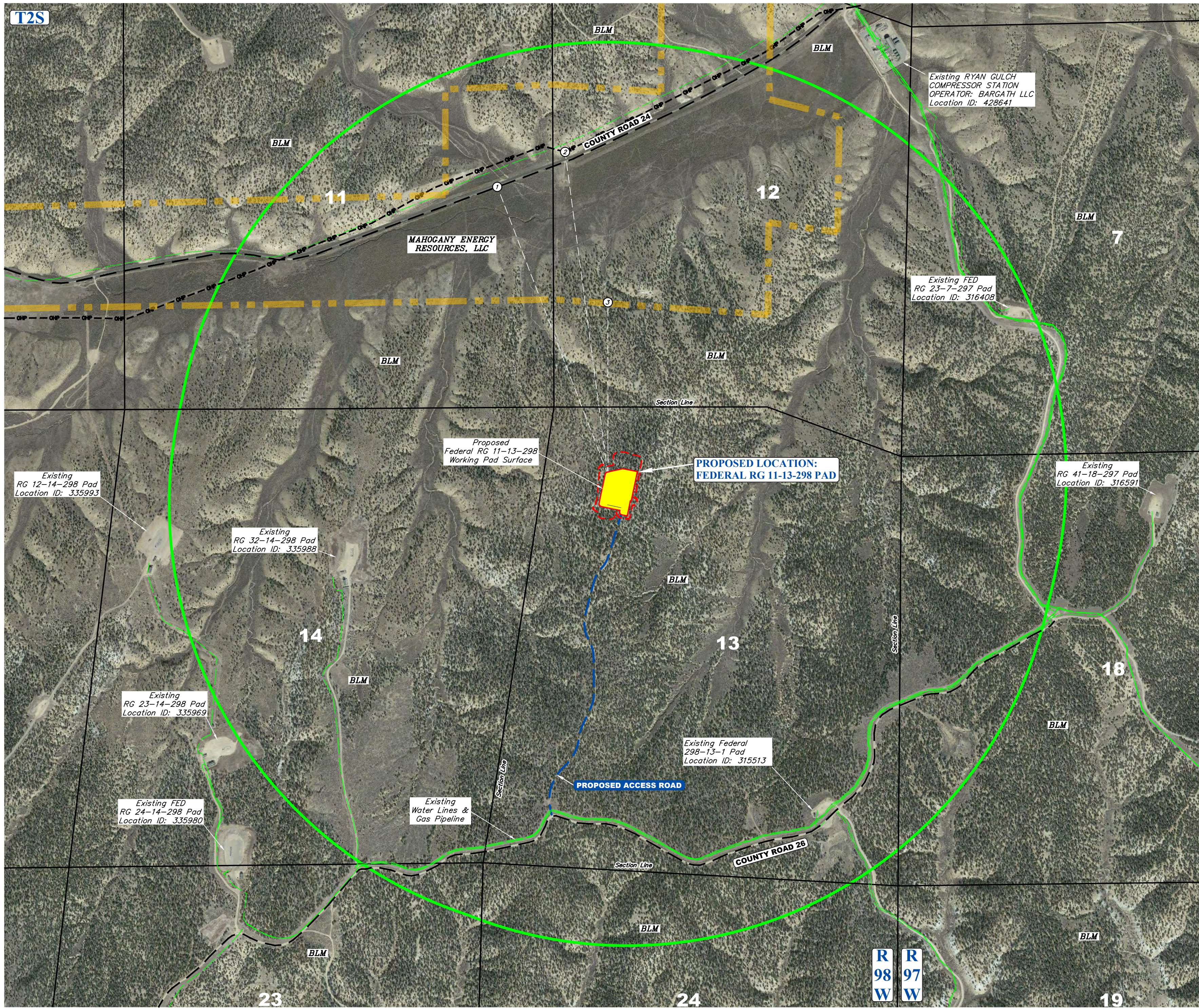


**UELS, LLC**  
Corporate Office \* 85 South 200 East  
Vernal, UT 84078 \* (435) 789-1017

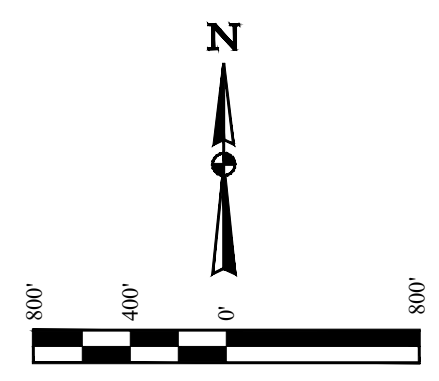
<b>SURVEYED BY</b>	BART HUNTING	07-21-21	<b>SCALE</b>
<b>DRAWN BY</b>	T.L.L.	09-20-21	

**CULTURAL DISTANCES TABLE**

T2S



#	FEATURE	BEARING	DISTANCE
1	COUNTY ROAD 24	NW	3,989'±
2	ABOVE GROUND UTILITIES	NW	3,967'±
3	PROPERTY LINE	N	2,121'±



**LEGEND**

- = PROPOSED OIL & GAS LOCATION (LOD)
- = PROPOSED WORKING PAD SURFACE
- = PROPOSED ACCESS ROAD
- = 5280' OFFSET FROM WORKING PAD SURFACE
- = PROPERTY LINE
- = EXISTING COUNTY ROAD
- = EXISTING OIL/GAS PIPELINES & EXISTING WATER LINES
- = EXISTING OVERHEAD POWER LINE

**NOTES:**  
 • See Cultural Distances Table on Separate Sheet.

**UELS, LLC**  
 Corporate Office \* 85 South 200 East  
 Vernal, UT 84078 \* (435) 789-1017



REV: 5 05-06-22 M.D. (EXISTING LOCATIONS NAME CHANGE)

**TEP Rocky Mountain LLC**

**FEDERAL RG 11-13-298 PAD**  
**LOT 4, SECTION 13, T2S, R98W, 6th P.M.**  
**RIO BLANCO COUNTY, COLORADO**

SURVEYED BY	BART HUNTING	08-18-21	SCALE
DRAWN BY	T.L.L.	09-20-21	1" = 800'

**CULTURAL FEATURES MAP**

R  
98  
W

R  
97  
W